

TRIANGLE



STOCK FARM

15TH ANNUAL SIMMENTAL BULL SALE



FEBRUARY 20, 2026

FRIDAY 1:00PM * AT THE FARM * PARKLAND COUNTY, AB

Welcome



Welcome to our 15th Annual Bull Sale! 2026 is the year of the "Horse," the year of forward motion – Momentum – Trust – Stamina – the path is clear. This could not ring truer as we move into the new year. We have gathered our largest group of bulls together this year with the most depth and off a group of females we have developed for many years which we have the utmost trust in. The longevity and stamina we have bred into these cow families have sent the momentum of our herd in the right direction. The 2025 calf crop was nothing short of meeting our expectations and moving forward the 2026 calf crop is right on par with some new genetics.

Our path is clear as registered livestock producers to provide genetics and cattle with predictability and consistency to our customers. Our customers make the wheels turn here and we are so appreciative of the support over the last 15 years whether you were a bidder or buyer. Your interest and your investment in our program keep us on the leading edge of providing new genetics and improvements within the Simmental breed.

This year's pen of Red & Black Bulls offers a bit for everyone once again. We have performance and calving ease bulls that have great dispositions, hair coats, conversion on feed, scrotal development, maturity and will be the type to add to your herd. We take pride in what our cows can do for us as we do not creep feed these bulls. The actual weaning weight is truly reflective of the cows' capabilities and we value that. We manage our cows to allow the genetics to shine through and pay dividends. After weaning these bulls are grown out on nothing fancy and we strive to provide bulls that are athletic and ready to go to work.

We are offering the only 2026 semen that will sell this year at our bull sale on Twin Springs BGS Ranger 6M. 50 straws will be auctioned and we are so impressed with this bull and the calves we have on the ground. Dark red, moderate BW, smooth made, lots of eye appeal and presence and are growing each day. Rangers' pedigree is solid and predictable. We have no doubt his calves will be admired and will take us to another level. Make plans early for your 2026 breeding.

Circle Z Simmentals joins us once again as a consignor with 8 bulls. We have sold him a few females over the years and he has definitely made some great matings with them to showcase some bulls with performance, presence and predictability.

The sale is a Live/On Farm Video sale hosted by DLMS. The bulls will be on display for your appraisal and the sale will be held in our heated barn. We welcome you to view the offering prior to the sale and if you are unable to attend sale day, please feel free to contact any one of us or our sale staff for assistance. Videos of the bulls can be viewed through cattlevids closer to sale date.

Welcome anytime – the coffee is always on!

VANCE, MICHELE
CHEYENNE & COLBEY KLEPPER



2026 YEAR OF THE HORSE



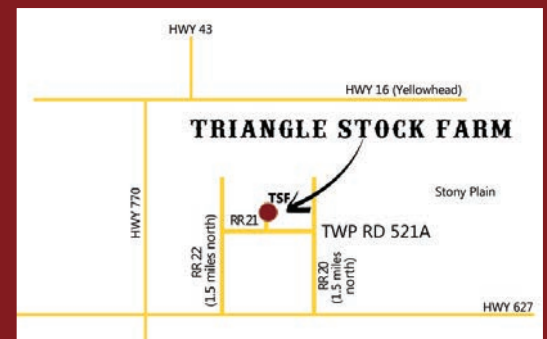
SCAN ME
for directions

TRIANGLE STOCK FARM

52117 Range Road 21
Parkland County, Alberta T7Y 3C2
H: 780-968-2354 C: 780-718-9334
tsf@trianglestockfarm.com

DIRECTIONS

- 1/2 hr west of Edmonton, AB -
Look for signs on sale day.
52117 Range Road 21, Parkland County



Thank you for supplying the sale day washroom.

Steve Radostits, DVM
Dana Somers, DVM
Graeme Boender, DVM

Rita Baumann, DVM
Melissa Westling, DVM

Leduc **FARMANIMAL** HOSPITAL

5710-47 Street Leduc, Alberta, T9E 6Z9
Ph: 780-986-3269 Fax: 780-986-9766
info@leducfarmanimalhospital.ca
www.leducfarmanimalhospital.ca

Hennig
SEPTIC SERVICE

780-963-2055
hennigseptic.com

ACCREDITED BUSINESS

Providing Parkland County and the surrounding area with quality septic services and wastewater removal.

accounts@hennigseptic.com Mike Hudson - Owner
#134, 108 - 4301B South Park Drive, Stony Plain, Alberta T7Z 2A9
EMERGENCY CONTACT: 780-920-8022

306.690.8554
OUTLAWFAB@HOTMAIL.COM
STONY PLAIN, AB

CNC PLASMA CUTTING
MOBILE WELDING
CUSTOM FAB

OUTLAW FAB

THANK YOU TO OUR SPONSORS

TRIANGLE STOCK FARM

15th Annual
Bull Sale

Offering • 50 Yearling Red & Black Simmental Bulls
• 1 Lot Frozen Genetics - Semen -

Friday, February 20, 2026 at 1:00 pm
On the Farm, Parkland County, AB

SALE DAY PHONES

Michele Klepper	780-718-9334
Cheyenne Klepper	780-718-6024
Vance Klepper	780-902-7343
Daniel Ziehr	780-863-9447

ONLINE BIDDING & VIEWING DLMS.CA

Mark Shologan 780-699-5082  www.dlms.ca

AUCTIONEER

Danny Skeels 403-783-1217

RINGMEN

Dean Edge	403-704-0280
Garren Skeels	403-704-5784

BOHRSON MARKETING SERVICES

Darryl Snider 780-385-5561

INSURANCE

Canadian Farm Insurance 780-387-8376
Kolton Kasur

All Bulls remaining on the farm after the sale will require insurance

LUNCH

Please join us for lunch at noon in our heated barn

BULL DEVELOPMENT

We have developed our bulls on free choice hay and greenfeed (introduced November) and we pail feed the 14% Bullseye pellet at 8-10 lbs/day and free choice salt/mineral. We expect these bulls to excel as they develop and mature and settle into their new homes with little adjustment.

HEALTH

All bulls are under a health protocol designed by Leduc Farm Animal Hospital.
Birth - Vit ADE, Selenium, Toltrazuril, Once PMH, Inforce
Prior to Grass - Pyramid 5 with prepsone, Vision 8S
Weaning - Vista Once, Vision 8S, Probac, Cyence and boosters after weaning followed with Ivomec & Clean-up in Nov
All bulls will be scrotal measured and semen evaluated by a licensed veterinarian prior to the sale.

DELIVERY & BOARD

Take your bull home sale day and we will take \$100 off the purchase price. We will deliver bulls free of charge to central points in Alberta and will arrange trucking anywhere else at cost. Free board until April 1, 2026 after that date \$5.00/day and the purchaser is responsible for pick-up.
All bulls staying must be insured.

SEMEN RESERVE

Triangle Stock Farm and Circle Z reserves the right to draw semen on any of the sale offering for in herd use only, this will be at the seller's expense and the owner's convenience.

ACCIDENTS

Although every precaution will be taken to protect the safety and comfort of people in attendance, Triangle Stock Farm assume any responsibility in this matter and disclaims any liability, legal or otherwise in the event of accidents or loss of property.

CATALOGUE CREATED BY 14 West Creations

A SPECIAL THANK YOU FROM TRIANGLE STOCK FARM TO ALL BUYERS IN 2025

Marvin & Barb Branden
Sawyer Vaughan
Codesa Colony Farming Co. Ltd
Meunier Livestock *
IH Simmentals
Ziehr Farms Ltd
Russell Spearin
John & Sandra Carter
Prins Bros Cattle
Next Level Organic Farms *
Blue J Farms Ltd
MCG Simmentals
Five Star Cattle Ranch *
Danny Homeak

Sande Cattle Co.
Torby Farms Ltd
Robert & Bonnie Sandsbraaten *
Ace High Farms Ltd
Beaver Ridge Simmental
Noel Tomm
Bar C4 Farm Enterprises Ltd
Ruch Land & Cattle
Rick Kendall
Stanley Brothers Ranching Joint
Venture *
Chester Ranches *
Les Charlet *
Debra & Grant McDonald

Westgold Farms Ltd
Rogerson Farms *
Dercam Farms Inc. *
Trevor & Evan Milne
Bryan Gallatin Farms Ltd
Porter Ranches Ltd
Rudolf Resources Ltd
John Middelkoop
Back In Black Simmentals
Lewis Farms
PDK Simmentals *
Oakview Simmentals
Poor Boy Ranch *
Jem Simmentals

Shady Nook Simmentals
S and S Simmentals
Rusylvia Cattle Co.
Rafter 4T *
Lake Bottom Cattle Co.
Norm Boulianne
Melvern Simmentals
Bert's NR Simmentals
Willow Creek Simmentals
Albrecht Farms
Jaydawn Farms
Ridgeview Cattle Co.
TZ Livestock

** means multiple purchases*

View Catalogue & Videos online at www.dlms.ca



1 TSF NAVIGATOR 31N

TSF 31N BPG1514340 Jan. 10, 2025

KBHR HIGH ROAD E283
S: **MR SR HIGHLIFE G1609**
MISS SR D1609

JDF EL TIGRE 27B
D: **TSF DAHLIA 48D**
TSF APRIL 24A

HOOK'S BEACON 56B
WS MISS SUGAR C4
JBS BIG CASINO 336Y
MISS SR Y1102
MRL EL TIGRE 52Z
JDF MATTIE 61R
SKORS DREAM ON 101X
MS PORTER 09 94W

E P D	CE	BW	WW	YW	MILK	MCE	MWWT
	5.9	3.7	82.5	123.4	20.1	4.1	61.4

Black baldy with all the goods and he's Homo Polled and Homo Black. Sired by Highlife who adds eye appeal, moderation, and uniformity to his offspring. These two Highlife bulls have style, smoothness and hair. 31N traces back to 24A cow family who has been solid - dam of Lot 19.

Gestation 285 days / Homo Polled / Homo Black

BW
96 lbs.
Sept 2/25 WW
870 lbs.
Jan 11/26 WT
1290 lbs.



TSF Dahlia 48D



2 TSF NETWORTH 33N

TSF 33N BPG1514342 Jan. 12, 2025

KBHR HIGH ROAD E283
S: **MR SR HIGHLIFE G1609**
MISS SR D1609

TSF LIMITED EDITION 40E
D: **TSF GRETA 5G**
SFM BS 117D

HOOK'S BEACON 56B
WS MISS SUGAR C4
JBS BIG CASINO 336Y
MISS SR Y1102
MR CCF VISION
BLACKSAND RANCH DEVA 18X
MRC SUPREMACY 260B
SFM MISS 15A

E P D	CE	BW	WW	YW	MILK	MCE	MWWT
	10.3	2.0	82.0	124.1	22.7	5.9	63.7

Thick, moderate made black baldy who has possessed a great look from day one. This fellas dam is a replica of her dam 117D who is the dam of Lot 6. They are our type no glitter or glamour just productive and part of the equation when producing beef bulls. Network will be a moderator and a female maker. Last years son off 5G sold to Meunier Livestock & IH Simmentals.

Gestation 285 days / Homo Polled / Homo Black

BW
88 lbs.
Sept 2/25 WW
905 lbs.
Jan 11/26 WT
1290 lbs.



TSF Greta 5G



3 TSF NETWORK 3N

TSF 3N BPG1510143 Jan. 1, 2025

RF CALIBER 014G
S: **IPU 30-06 47K**
IPU MS. BLACK LOTTO 144A

TSF DEUCE 22Z
D: **TSF ELEGANCE 12E**
BLACKSAND PAHMENIA 42B

NGDB STRUCTURE 34D
RF NOT JUST A FLIRT 404B
SPRINGCREEK LOTTO 52Y
IPU MS HERO 113P
CNS DREAM ON L186
TSF MELISSA 104X
HARVIE JDF WALLBANGER111X
NUG PASHMENIA 403P

E P D	CE	BW	WW	YW	MILK	MCE	MWWT
	6.1	3.9	87.4	129.7	26.0	5.4	69.7

Network puts it all together – pedigree & phenotype. A bull that has unlimited potential as the 30-06 bulls got some power, length and added frame. Deuce daughters have been great producers and this one has an added touch of the Pashmenia cow family. Style with a shot of female maker written on him.

Gestation 287 days / Homo Polled / Hetero Black

BW
92 lbs.
Sept 2/25 WW
890 lbs.
Jan 11/26 WT
1210 lbs.



TSF Elegance 12E

4

TSF NICKSTER 11N

TSF 11N

BPG1510339

Jan. 3, 2025

RF CALIBER 014G

S: **IPU 30-06 47K**

IPU MS. BLACK LOTTO 144A

SKORS BLACK ENTICER 4W

D: **SKORS LICORICE 343E**

SKORS MS LICORICE 198T

NGDB STRUCTURE 34D

RF NOT JUST A FLIRT 404B

SPRINGCREEK LOTTO 52Y

IPU MS HERO 113P

SHS ENTICER P1B

SKORS MISS JOKER 10N

CNS DREAM ON L186

SKORS RED LICORICE 163R

E P D	CE	BW	WW	YW	MILK	MCE	MWWT
	5.5	4.7	95.8	143.6	28.2	5.9	76.1

Looking to add length, profile and style then Nickster is your bull. He will add a lot of value plus his 4W dam 343E is a model cow who has sons who have sold to Bryan Gallatin Farms Ltd, Prins Bros Cattle and Next Level Organic Farms. Sire IPU 30-06 was the 2023 high seller from Labatte Simmentals bull sale and we thought a lot of him when he sold and were happy to get some semen on him as his offspring have extra length and a definite look to them. These 4 brothers are definitely highlights in the pen.

Gestation 290 days / Homo Polled / Hetero Black

BW
100 lbs.

Sept 2/25 WW
1030 lbs.

Jan 11/26 WT
1415 lbs.



Skors Licorice 343E



5

TSF NEXT LEVEL 12N

TSF 12N

BPG1510341

Jan. 3, 2025

RF CALIBER 014G

S: **IPU 30-06 47K**

IPU MS. BLACK LOTTO 144A

HSF HIGH ROLLER 12T

D: **TSF CARLY 22C**

TSF MAGGIE 4A

NGDB STRUCTURE 34D

RF NOT JUST A FLIRT 404B

SPRINGCREEK LOTTO 52Y

IPU MS HERO 113P

TJ 57J THE GAMBLER

HSF RED FORTUNES SIS 33

SKORS BLACK ENTICER 4W

SKORS MS MAGNOLIA 416X

E P D	CE	BW	WW	YW	MILK	MCE	MWWT
	3.2	5.1	100.2	148.9	32.9	3.6	83.0

12N is Next Level as he's a hairy, power bull with lots of masculinity, structure and scrotal. Off a deep ribbed thick High Roller daughter who is consistent in the bull pen. A standout bull and one of the three brothers who weaned off within 15 pounds of one another. WW and YW on these bulls rank in the top.

Gestation 289 days / Homo Polled / Homo Black

BW
102 lbs.

Sept 2/25 WW
1040 lbs.

Jan 11/26 WT
1445 lbs.



TSF Carly 22C



6

TSF NIGHTFALL 13N

TSF 13N

BPG1510342

Jan. 3, 2025

RF CALIBER 014G

S: **IPU 30-06 47K**

IPU MS. BLACK LOTTO 144A

MRC SUPREMACY 260B

D: **SFM BS 117D**

SFM MISS 15A

NGDB STRUCTURE 34D

RF NOT JUST A FLIRT 404B

SPRINGCREEK LOTTO 52Y

IPU MS HERO 113P

MRC WALL STREET 183Z

TWIN CHIEF ULYSSES 260U

LFE BS LEWIS 322U

HAAS RANCH19

E P D	CE	BW	WW	YW	MILK	MCE	MWWT
	2.2	5.8	99.9	147.4	19.2	2.0	69.2

Loaded with style and hair. Actual WW is stellar and this dude is all business. Off a fault free cow, we just cannot make enough of. Great foot, udder, disposition and a consistent producer. 117D is the type we can make a living off of and Nightfall will be a bull with a quick ROI. Long made with lots of top and has built in longevity and structural soundness. Lot 2 is off 117D's daughter 5G.

Gestation 283 days / Homo Polled / Hetero Black

BW
104 lbs.

Sept 2/25 WW
1045 lbs.

Jan 11/26 WT
1540 lbs.



SFM BS 117D





TSF Jaycee 13J

7

TSF NAVAJO 25N

TSF 25N

BPG1513746

Jan. 7, 2025

WHEATLAND BENTLEY 630D
S: **IPU BENTLEY 81F**
CLAYHILL FANCY LUCA 39A
CROSSROAD CONNECTED 12G
D: **TSF JAYCEE 13J**
TSF ELEGANCE 12E

WHEATLAND FINAL AFFAIR
WHEATLAND LADY 72X
MR NLC UPGRADE U8676
CLAYHILL FANCY PANTS 32S
CROSSROAD RED STETSON 9E
PERKS BLACK DOLL 1121Y
TSF DEUCE 22Z
BLACKSAND PAHMENIA 42B

EPD	CE	BW	WW	YW	MILK	MCE	MWWT
	7.3	3.7	93.5	130.9	23.0	4.9	69.8

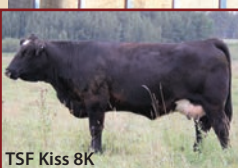
A Bentley son with some chrome and one who will get out and make a mile as he is smooth, stylish and sound. Grand-dam is the dam of Lot 3 and this cow family has been so consistent and productive. The Bentley females in production here are moderate, deep ribbed and the type to convert.

Gestation 291 days / Scurred / Homo Black

BW
90 lbs.

Sept 2/25 WW
950 lbs.

Jan 11/26 WT
1365 lbs.



TSF Kiss 8K

8

TSF NORTH COUNTRY 29N

TSF 29N

BPG1513750

Jan. 9, 2025

CROSSROAD RED STETSON 9E
S: **CROSSROAD CONNECTED 12G**
PERKS BLACK DOLL 1121Y
CNS DREAM ON L186
D: **TSF KISS 8K**
BLACKSAND PAHMENIA 42B

SIBELLE SPARTACUS 8A
IPU MS. CODE RED 249A
KOP CROSBY 137W
WFL MISS 21F DOLL 20P
NICHOLS LEGACY G151
CNS SHEEZA DREAM K107W
HARVIE JDF WALLBANGER111X
NUG PASHMENIA 403P

EPD	CE	BW	WW	YW	MILK	MCE	MWWT
	8.3	3.2	79.9	121.8	26.9	6.7	66.9

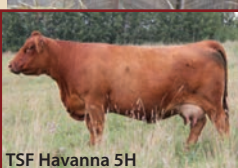
North Country has been a looker since day one. He has added frame, length and dimension as one studies him. Off the cow family who have been solid contributors for us. Pieces of this maternal pedigree are found in Lots 3 and Lot 7. A bull with a great look and a pedigree that is solid.

Gestation 297 days / Hetero Polled / Hetero Black

BW
106 lbs.

Sept 2/25 WW
905 lbs.

Jan 11/26 WT
1295 lbs.



TSF Havanna 5H

9

TSF NOTORIOUS 119M

TSF 119M

BPG1510138

Jan. 11, 2026

NGDB STRUCTURE 34D
S: **RF CALIBER 014G**
RF NOT JUST A FLIRT 404B
BEE BRIMSTONE 247E
D: **TSF HAVANNA 5H**
TSF ELITE 11E

NCB COBRA 47Y
NGDB LOUISE 411 B
SVS CAPTAIN MORGAN 11Z
RF CERTAINLY FLIRTIN 20Z
MRL MISSILE 138C
BEE ZIANG 247Z
HSF HIGH ROLLER 12T
TSF CADILLAC 6C

EPD	CE	BW	WW	YW	MILK	MCE	MWWT
	10.1	2.5	97.7	147.1	23.9	6.9	72.8

Soft made, deep ribbed Caliber son with a great look to him. Loads of hair, character and dimension backed with a cow with depth, shape and one who knows how to crank them out and her calving interval is stellar and she weans the big ones. Notorious will be the kind to build around as his females will be ideal and the steers will have added pounds as his epd profile and numbers back him up.

Gestation 283 days / Homo Polled / Hetero Black

BW
90 lbs.

Sept 2/25 WW
1000 lbs.

Jan 11/26 WT
1455 lbs.

10

TSF NOTIFY 50N

TSF 50N

BPG1514358

Jan. 25, 2025

NGDB STRUCTURE 34D

S: **RF CALIBER 014G**

RF NOT JUST A FLIRT 404B

BCLR AMBITION E301

D: **TSF KASSIE 25K**

TSF ESPRESSO 50E

NCB COBRA 47Y

NGDB LOUISE 411 B

SVS CAPTAIN MORGAN 11Z

RF CERTAINLY FLIRTIN 202Z

CDI AMBITION 255C

BCLR MISS AUTHORITY A301

3D BLK FULL THROTTLE 483X

MS PORTER 10 44X

E P D	CE	BW	WW	YW	MILK	MCE	MWWT
	1.1	5.7	105.0	161.1	20.7	2.5	73.2

This Caliber son is all gas and no brakes when it comes to WW & YW ranking in the top 1% for each. Hairy, long made with that signature Caliber look and off an Ambition daughter who knows how to crank them out. Last years Red Summit son sold to Rogerson Farms. Grand-dam 50E is the dam to Lot 25 and has been a consistent productive female. A definite pen favorite.

Gestation 286 days / Homo Polled / Hetero Black

BW
105 lbs.

Sept 2/25 WW
935 lbs.

Jan 11/26 WT
1395 lbs.



TSF Kassie 25K



11

TSF NARCOS 112M

TSF 112M

BPG1510131

Twin Dec. 27, 2024

NGDB STRUCTURE 34D

S: **RF CALIBER 014G**

RF NOT JUST A FLIRT 404B

IPU BENTLEY 81F

D: **TSF JULIE 45J**

TSF KAHLUA 26A

NCB COBRA 47Y

NGDB LOUISE 411 B

SVS CAPTAIN MORGAN 11Z

RF CERTAINLY FLIRTIN 202Z

WHEATLAND BENTLEY 630D

CLAYHILL FANCY LUCA 39A

SKORS DREAM ON 101X

TSF MELISSA 104X

E P D	CE	BW	WW	YW	MILK	MCE	MWWT
	3.6	5.4	101.6	151.4	22.0	4.7	72.8

Narcos is full of muscle, thickness and character. This Caliber son has not missed a beat he was grafted onto a female who gave him the opportunity to grow and that he did. Weaning off as the second heaviest and one who will leave tremendous females and the steers will be the type to push the scale down. Full brother to Lot 12. Add the two to your breeding program and who knows what may unfold as the guess work has been done and the cow family is strong.

Gestation 286 days / Homo Polled / Hetero Black

BW
86 lbs.

Sept 2/25 WW
1065 lbs.

Jan 11/26 WT
1480 lbs.



TSF Julie 45J



12

TSF NIKKO 113M

TSF 113M

BPG1510132

Twin Dec. 27, 2024

NGDB STRUCTURE 34D

S: **RF CALIBER 014G**

RF NOT JUST A FLIRT 404B

IPU BENTLEY 81F

D: **TSF JULIE 45J**

TSF KAHLUA 26A

NCB COBRA 47Y

NGDB LOUISE 411 B

SVS CAPTAIN MORGAN 11Z

RF CERTAINLY FLIRTIN 202Z

WHEATLAND BENTLEY 630D

CLAYHILL FANCY LUCA 39A

SKORS DREAM ON 101X

TSF MELISSA 104X

E P D	CE	BW	WW	YW	MILK	MCE	MWWT
	3.6	5.4	101.6	151.4	22.0	4.7	72.8

Black baldy with presence and thickness. 113M displays maturity, plenty of scrotal and loaded with style. His dam 45J is such a productive female with a track record which is stellar. Her 1st daughter is a standout and last years bull was one of our high selling bulls to Meunier Farms Ltd. Now this year she went and out did herself putting two standouts in the bull pen and has calved here in December with a super heifer calf. If fertility, productivity backed with a predictable cow family 26A – this female is one you may want to have a part of.

Gestation 286 days / Homo Polled / Homo Black

BW
78 lbs.

Sept 2/25 WW
970 lbs.

Jan 11/26 WT
1370 lbs.



TSF Kahlua 26A





TSF Josie 39J

13 TSF NY 22N

TSF 22N

BPG1513743

Jan. 7, 2025

PRL MAGNITUDE 362M
S: **PRL TOBACCO 201T**
PRL PE'PE 372P

LBR CROCKET R81
D: **TSF JOSIE 39J**
TSF EVA 14E

BS MR CORRECTOR 9111J
MISS ARNOLD K2280
TNT DYNAMITE BLACK L137
PRL KALILA 224K
KENCO/MF POWERLINE 204L
LBR NIGHT DREAM M22
PRL PORTERHOUSE REGENT
PORTERS 256T

E P D	CE	BW	WW	YW	MILK	MCE	MWWT
	-0.8	7.2	91.6	126.1	24.7	0.3	70.5

22N has got the look – a Tobacco son who weaned off just over 1000 and has not looked back. NY has great length, style and performance. His grand-dam 14E is the dam of Lot 28 and a maternal brother last year off 39J sold to Next Level Organic Farms. This bull is all business and if you would like to add some chrome, he will be your bull.

Gestation 288 days / Homo Polled / Hetero Black

BW
102 lbs.

Sept 2/25 WW
1005 lbs.

Jan 11/26 WT
1455 lbs.



TSF Finesse 28F

14 TSF NEGOTIATOR 47N

TSF 47N

BPG1514355

Jan. 21, 2025

ELLINGSON LEGACY M229
S: **MR NLC UPGRADE U8676**
MS NLC MOJO S6119 B

TNT BOOTLEGGER Z268
D: **TSF FINESSE 28F**
SKORS TWINKLES 183D

NICHOLS LEGACY G151
ELLINGSON MS PSTOCK K58
GLS MOJO M38
GFI DARLA M410
DCR MR MOON SHINE X102
TNT MISS W70
CMS TRADEMARK 756T
SKORS TWINKLES 415Y

E P D	CE	BW	WW	YW	MILK	MCE	MWWT
	11.3	1.9	79.1	114.4	21.2	5.4	60.8

Negotiator is hard to fault, he has herdsire written all over him and he is going to be a phenom as he matures. Early maturity, soft made, structurally sound with a cow family as strong as they come. Upgrade has always produced functional cattle and 47N will be one that leaves a trail when retaining every daughter off him.

Gestation 290 days / Homo Polled / Hetero Black

BW
86 lbs.

Sept 2/25 WW
900 lbs.

Jan 11/26 WT
1235 lbs.



TSF Eleena 34E

15 TSF NORTHSTAR 61N

TSF 61N

BPG1514367

Feb. 12, 2025

SPRINGCREEK ESTATE 58H
S: **KWA ESTATE 24K**
KWA MS RIDDLER 6G

TSF DEUCE 22Z
D: **TSF ELEENA 34E**
TSF BRIE 35B

NGDB STRUCTURE 34D
SPRINGCREEK ABBEY 99E
LFE THE RIDDLER 323B
KWA MS WESTERN 178 B
CNS DREAM ON L186
TSF MELISSA 104X
JDF WALLBANGER 61Z
MS PORTER 10 44X

E P D	CE	BW	WW	YW	MILK	MCE	MWWT
	8.0	2.9	80.9	119.3	20.9	6.4	61.4

A full brother sold last year to MCG Simmentals and he was a thick made stylish Estate son. Northstar was set back at weaning time as the rest of the pen thought he would be the one to be picked upon. 61N is gearing up now with a great look to him and off a Deuce daughter 34E who is as complete made as any cow we have with a super disposition. 61N will definitely mature into a smooth, easy doing balanced herdsire who will sire a signature calf crop.

Gestation 284 days / Homo Polled / Homo Black

BW
95 lbs.

Sept 2/25 WW
825 lbs.

Jan 11/26 WT
1175 lbs.

16

TSF NICKELBACK 109M

TSF 109M

BPG1510127

Dec. 25, 2024

SPRINGCREEK ESTATE 58H

S: **KWA ESTATE 24K**

KWA MS RIDDLER 6G

BCLR AMBITION E301

D: **TSF KLASSY 43K**

TSF ARIA 12A

NGDB STRUCTURE 34D

SPRINGCREEK ABBEY 99E

LFE THE RIDDLER 323B

KWA MS WESTERN 178 B

CDI AMBITION 255C

BCLR MISS AUTHORITY A301

PRL MAGNITUDE 362M

TSF ULYSSA 84U

E P D	CE	BW	WW	YW	MILK	MCE	MWWT
	10.1	2.1	82.1	119.5	21.3	6.8	62.4

Moderate made Estate son who has lots of rib, style, smaller skull and lots of middle. Off an Ambition daughter who is complete with great feet and legs and a neat udder. Weaned off at 975 and has gone on and performed on feed. A bull who will elevate your breeding program and the females off this bull will be super consistent.

Gestation 281 days / Homo Polled / Hetero Black

BW
82 lbs.

Sept 2/25 WW
975 lbs.

Jan 11/26 WT
1435 lbs.



TSF Klassy 43K



17

TSF NISSAN 115M

TSF 115M

BPG1510134

Dec. 28, 2024

SPRINGCREEK ESTATE 58H

S: **KWA ESTATE 24K**

KWA MS RIDDLER 6G

WS EPIC E152

D: **TSF HALEY 102H**

TSF FIZZ 17F

NGDB STRUCTURE 34D

SPRINGCREEK ABBEY 99E

LFE THE RIDDLER 323B

KWA MS WESTERN 178 B

WS ALL ABOARD B80

WS MAJESTIC Z133

PRL PORTERHOUSE REGENT

PORTERS 256T

E P D	CE	BW	WW	YW	MILK	MCE	MWWT
	11.5	0.9	81.1	121.0	18.9	7.0	59.5

An Estate son who patterns just like his sire. Wide topped, smooth made, good bone, hair and testicular development. Uniformity and predictability are what Estate sires and his offspring were well accepted last year selling to some great cattlemen. An Estate daughter just calved and if she is the pattern Estate cuts we need to duplicate and I think these sons will do just that as they all pattern very much like Estate himself.

Gestation 281 days / Homo Polled / Homo Black

BW
84 lbs.

Sept 2/25 WW
875 lbs.

Jan 11/26 WT
1265 lbs.



TSF Haley 102H



18

TSF NETFLIX 121M

TSF 121M

BPG1510140

Dec. 31, 2024

SPRINGCREEK ESTATE 58H

S: **KWA ESTATE 24K**

KWA MS RIDDLER 6G

IPU BENTLEY 81F

D: **TSF KESHA 112J**

TSF CHICKLET 44C

NGDB STRUCTURE 34D

SPRINGCREEK ABBEY 99E

LFE THE RIDDLER 323B

KWA MS WESTERN 178 B

WHEATLAND BENTLEY 630D

CLAYHILL FANCY LUCA 39A

JDF WALLBANGER 61Z

TSF MELISSA 104X

E P D	CE	BW	WW	YW	MILK	MCE	MWWT
	10.5	1.7	81.8	119.0	22.3	7.3	63.2

These Estate sons are so typical of one another and we like their traits - soft made, deep sided, good hair coat, finer boned and come easy and grow. Here is a bull off a stunning Bentley daughter 112J who is the dam of our high selling bred heifer this past female sale in October to Lewis Farms. 121M is smooth in his make-up, moderate in his frame and is packed with width and soundness. Take an Estate son home and you will not be disappointed.

Gestation 277 days / Homo Polled / Hetero Black

BW
74 lbs.

Sept 2/25 WW
855 lbs.

Jan 11/26 WT
1230 lbs.



TSF Kesha 112J



19 TSF NEXTSWITCH 20N

TSF 20N

PG1513741

Jan. 7, 2025

WHEATLAND CIRCUIT BREAKER
S: **WHEATLAND KILL SWITCH**
HR/RR MS CANDACE T73

SKORS DREAM ON 101X
D: **TSF APRIL 24A**
MS PORTER 09 94W

WHEATLAND HIGHVOLTAGE122Y
WHEATLAND LADY 81X
REMINGTON RED LABEL HR
GFI CANDACE G51
CNS DREAM ON L186
SKORS DAMSEL 35U
PRL TOBACCO 201T
PRL SAVANNA 863S

E P D	CE	BW	WW	YW	MILK	MCE	MWWT
	3.8	5.2	80.9	117.0	23.8	4.4	64.3

Off a 13 yr old cow who shows no sign of slowing down as she has calved again here in December and is so consistent and productive with a foot and udder that you cannot beat. This Killswitch son will produce phenomenal daughters. Hairy, long spined, complete made and has a great look to him. Last years high seller was a Killswitch son and they are the type we like.

Gestation 290 days / Homo Polled / Non-dilutor

BW
100 lbs.
Sept 2/25 WW
920 lbs.
Jan 11/26 WT
1335 lbs.



TSF April 24A

20 TSF NEVADA 23N

TSF 23N

PG1513744

Jan. 7, 2025

MAR MAC UTAH WHISKY 52E
S: **WLB TOP TIER 456G**
WLB 47Y FAE 343E

SVS WHISKEY 643D
D: **TSF GODDESS 73G**
PRL TELLY 488T

TNT BOOTLEGGER Z268
MAR MAC UTAH'S DREAM 79U
SUNNY VALLEY FORCE 47Y
WLB 756T TRESSIE 3556B
MRL RED WHISKEY 101B
3D MISS SARA 158U
PELTONS POWERCAT 344G
PRL RED RYDER 235R

E P D	CE	BW	WW	YW	MILK	MCE	MWWT
	7.5	3.4	76.1	101.9	23.5	2.4	61.6

Nevada has a great look to him and will sire females with tremendous udders, style, length and broodiness with his pedigree. Last years maternal brother sold to Chester Ranches. 23N is a stout, moderate made Top Tier son with hair, pigment and growth.

Gestation 286 days / Homo Polled / Dilutor

BW
100 lbs.
Sept 2/25 WW
835 lbs.
Jan 11/26 WT
1260 lbs.



TSF Goddess 73G

21 TSF NAMPA 34N

TSF 34N

PG1514343

Jan. 13, 2025

KUNTZ SHERIFF 8A
S: **IPU RED DEPUTY 25C**
IPU 56U MS. RED LINER 81A

SVS WHISKEY 643D
D: **TSF JADE 61J**
TSF EMERY 43E

KUNTZ MARSHALL 12Y
PEACOCK'S LI'L NETTIE 23Y
SPRINGCREEK LINER 56U
ASR MS BLACK DESI W9154
MRL RED WHISKEY 101B
3D MISS SARA 158U
TSF DEUCE 22Z
PRL RED REQUEST 241R

E P D	CE	BW	WW	YW	MILK	MCE	MWWT
	1.4	5.6	93.1	140.2	26.6	0.3	73.2

A hairy Red Deputy son with added length and structure. Maternal brother sold to Rick Kendall last year and his dam is as consistent and correct as they come. A Beef King daughter of 61J is the dam of Lot 41 and she is ideal in every way with a strong future. 34N will add pounds and the females will be standouts between the attributes of Red Deputy and 34Ns maternal side.

Gestation 290 days / Homo Polled / Non-dilutor

BW
102 lbs.
Sept 2/25 WW
935 lbs.
Jan 11/26 WT
1370 lbs.



TSF Jade 61J

22

TSF NASSAU 6N

TSF 6N

SG1510146

Jan. 2, 2025

CNS DREAM ON L186

S: **TSF DEUCE 22Z**

TSF MELISSA 104X

SVS TYCOON 841F

D: **KUNTZ ABBEY 116J**

KUNTZ ABBEY 729E

NICHOLS LEGACY G151

CNS SHEEZA DREAM K107W

PRL MAGNITUDE 362M

TSF ULYSSA 84U

SVS BROOKS 669D

SVS RED ANNIE 411B

TNT GUNNER N208

KUNTZ ABBEY 538C

E P D	CE	BW	WW	YW	MILK	MCE	MWWT
	6.2	4.6	88.6	125.6	27.3	6.1	71.6

Impressive loose made hairy Deuce son with all the goods to sire some thick, stout steers and the heifers will be keepers. His Tycoon dam is such a complete, angular mother cow who does not miss a beat. Deuce daughters have been productive, broody females so latch onto 6N he will be worth it.

Gestation 291 days / Scurred / Non-dilutor

BW
96 lbs.

Sept 2/25 WW
945 lbs.

Jan 11/26 WT
1345 lbs.



Kuntz Abbey 116J



23

TSF NATE 116M

TSF 116M

PG1510135 Twin

Dec. 28, 2024

CNS DREAM ON L186

S: **TSF DEUCE 22Z**

TSF MELISSA 104X

LBR CROCKET R81

D: **TSF JJ 59J**

TSF CANDY 16C

NICHOLS LEGACY G151

CNS SHEEZA DREAM K107W

PRL MAGNITUDE 362M

TSF ULYSSA 84U

KENCO/MF POWERLINE 204L

LBR NIGHT DREAM M22

TNT GUNNER N208

TSF APRIL 24A

E P D	CE	BW	WW	YW	MILK	MCE	MWWT
	5.3	4.7	82.7	117.1	25.6	4.7	67.0

Deuce has always worked for us and has left tremendous females with rib, capacity, soundness and productivity. 116M is smooth made with a great profile. He will leave stellar females with Deuce and the 59J cow who is so complete and goes back to 24A who is the dam of Lot 19 and 59J's daughter is the dam to Lot 36. Cow families really do show up to account for consistency and productivity in one's herd.

Gestation 281 days / Homo Polled / Non-dilutor

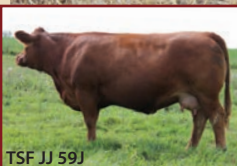
BW
70 lbs.

Sept 2/25 WW
795 lbs.

Jan 11/26 WT
1200 lbs.



TSF JJ 59J



24

TSF NASH 117M

TSF 117M

PG1510136 Twin

Dec. 28, 2024

CNS DREAM ON L186

S: **TSF DEUCE 22Z**

TSF MELISSA 104X

LBR CROCKET R81

D: **TSF JJ 59J**

TSF CANDY 16C

NICHOLS LEGACY G151

CNS SHEEZA DREAM K107W

PRL MAGNITUDE 362M

TSF ULYSSA 84U

KENCO/MF POWERLINE 204L

LBR NIGHT DREAM M22

TNT GUNNER N208

TSF APRIL 24A

E P D	CE	BW	WW	YW	MILK	MCE	MWWT
	5.3	4.7	82.7	117.1	25.6	4.7	67.0

Nash is complete in his makeup with balance, shape and true Deuce character. Pick up the two brothers and watch what this pair is capable of doing as they will be like peas in a pod. 59J definitely put her mark on these two bulls and this is a female with a beautiful udder, super feet, great disposition and just had a standout Ranger heifer calf who will be one to capitalize on as we do like this cow family. 117M is plum full of potential with his depth, shape and soundness.

Gestation 281 days / Homo Polled / Non-dilutor

BW
76 lbs.

Sept 2/25 WW
870 lbs.

Jan 11/26 WT
1300 lbs.



TSF Candy 16C





TSF Espresso 50E

25

TSF NORDEEG 41N

TSF 41N

BPG1514348

Jan. 17, 2025

SVS TYCOON 841F
S: **DEEG EL DORADO 81K**
WLB 18D SOFIE 497F

3D BLK FULL THROTTLE 483X
D: **TSF ESPRESSO 50E**
MS PORTER 10 44X

SVS BROOKS 669D
SVS RED ANNIE 411B
SFM STOUGHTON 18D
WLB 52Z TARA 4164D
WHEATLAND BULL 680S
CROSSROAD RAMONA 375R
KS BRAVADO P68
PRL UJADA 105U

E P D	CE	BW	WW	YW	MILK	MCE	MWWT
	-0.1	6.6	84.2	130.6	23.6	1.3	65.7

A cool black bull with a great look and a wide top. Loaded with hair and character this 50E son will definitely be one to add to the bull battery. 41N is strong footed, smooth throughout, clean made skull and is loaded with muscle. A daughter of 50E is the dam of Lot 10 and he is a stout wide topped, deep sided Caliber son.

Gestation 285 days / Homo Polled / Hetero Black

BW
105 lbs.
Sept 2/25 WW
800 lbs.
Jan 11/26 WT
1230 lbs.



Skors Twinkles 183D

26

TSF NISKU 43N

TSF 43N

PG1514350

Jan. 18, 2025

SVS TYCOON 841F
S: **DEEG EL DORADO 81K**
WLB 18D SOFIE 497F

CMS TRADMARK 756T
D: **SKORS TWINKLES 183D**
SKORS TWINKLES 415Y

SVS BROOKS 669D
SVS RED ANNIE 411B
SFM STOUGHTON 18D
WLB 52Z TARA 4164D
CMS RED POLLED ICON 16P
CMS LUBA 23L
THSR BOMBARDIER U802
SKORS MS RED KNIGHT 128T

E P D	CE	BW	WW	YW	MILK	MCE	MWWT
	0.8	6.7	87.7	129.0	27.1	1.2	71.0

A tank with a tonne of rib, middle and depth. 43N is locked and loaded with his pedigree and phenotype. Off the Twinkles cow who is an established cow family here with a daughter and granddaughter with bulls in the pen Lot 14 and Lot 27. Nisku will sire females that will have fertility and longevity bred into them.

Gestation 278 days / Homo Polled / Non-Dilutor

BW
102 lbs.
Sept 2/25 WW
900 lbs.
Jan 11/26 WT
1255 lbs.



TSF Kashmir 50K

27

TSF NIGHT CAP 44N

TSF 44N

PG1514351

Jan. 19, 2025

SVS TYCOON 841F
S: **DEEG EL DORADO 81K**
WLB 18D SOFIE 497F

TSF ESSO 48E
D: **TSF KASHMIRE 50K**
TSF FINESSE 28F

SVS BROOKS 669D
SVS RED ANNIE 411B
SFM STOUGHTON 18D
WLB 52Z TARA 4164D
WS BEEF KING W107
PRL URNECESSITY 104U
TNT BOOTLEGGER Z268
SKORS TWINKLES 183D

E P D	CE	BW	WW	YW	MILK	MCE	MWWT
	5.5	4.5	77.2	111.4	23.6	3.9	62.2

Stylish, smooth made bull off a smaller framed dark red female whose bull was one of our high sellers to Westgold Farms Ltd last year. 44N is solid in his makeup and one who will get out and work. If cow families are important to your program here is your bull. Grand-dam 28F is the dam to Lot 14 and great grand-dam 183D is the dam of Lot 26.

Gestation 287 days / Homo Polled / Non-dilutor

BW
95 lbs.
Sept 2/25 WW
785 lbs.
Jan 11/26 WT
1190 lbs.

28

TSF NEWPORT 5N

TSF 5N

PG1510145

Jan. 2, 2025

SVS TYCOON 841F

S: **DEEG EL DORADO 81K**
WLB 18D SOFIE 497F

PRL PORTERHOUSE REGENT

D: **TSF EVA 14E**

PORTERS 256T

SVS BROOKS 669D

SVS RED ANNIE 411B

SFM STOUGHTON 18D

WLB 52Z TARA 4164D

ROGANT

MS PRL NITE ANCHOR 087B

CNS DREAM ON L186

PRL RHYTHMIC 219R

E P D	CE	BW	WW	YW	MILK	MCE	MWWT
	0.9	6.8	94.8	138.5	28.4	0.7	75.8

A standout Eldorado son who packs a punch. Eye appeal, style and he is full of muscle and shape. Eldorado adds performance, muscle mass and lots of scrotal. A full sister sold last year in our female sale to Tandem T Farms and we are excited to watch her get into production. Newport will be easy to spot sale day.

Gestation 283 days / Scurred / Non-dilutor

BW
98 lbs.

Sept 2/25 WW
985 lbs.

Jan 11/26 WT
1510 lbs.



TSF Eva 14E

29

TSF NASHVILLE 18N

TSF 18N

PG1513738

Jan. 6, 2025

SVS TYCOON 841F

S: **DEEG EL DORADO 81K**
WLB 18D SOFIE 497F

TSF DEUCE 22Z

D: **TSF HAVEN 104H**

SKORS JUNO 106C

SVS BROOKS 669D

SVS RED ANNIE 411B

SFM STOUGHTON 18D

WLB 52Z TARA 4164D

CNS DREAM ON L186

TSF MELISSA 104X

SKORS BLACK ENTICER 4W

SKORS MS JUNO 149U

E P D	CE	BW	WW	YW	MILK	MCE	MWWT
	4.5	5.0	93.7	139.2	30.6	4.1	77.5

18N is a bull who commands a good look with his boldness, sound structure and overall completeness. Nashville has length, smoothness, width and depth in a package with a big foot, scrotal and a cow family we would like to build around. His Deuce dam just had a full brother to 18N and they come small and go on and grow. Maternal brothers have sold to Grant & Debra McDonald and Blue J Farms Ltd. A sale feature bull who has a lot to offer.

Gestation 281 days / Homo Polled / Non-dilutor

BW
94 lbs.

Sept 2/25 WW
985 lbs.

Jan 11/26 WT
1535 lbs.



TSF Haven 104H

30

TSF NOLAN 107M

TSF 107M

BPG1510113

Dec. 25, 2024

SVS TYCOON 841F

S: **DEEG EL DORADO 81K**
WLB 18D SOFIE 497F

JDF WALLBANGER 61Z

D: **TSF DESIGNER 44D**

TSF AGUILERA 18Z

SVS BROOKS 669D

SVS RED ANNIE 411B

SFM STOUGHTON 18D

WLB 52Z TARA 4164D

HARVIE JDF WALLBANGER111X

SMOKY HEIGHTS PAIGE

SAND RANCH HAND

MS PRL WHY NOT 173W

E P D	CE	BW	WW	YW	MILK	MCE	MWWT
	4.2	5.9	96.8	144.0	27.4	5.9	75.8

Hairy, with length of spine, depth and power. Nolan has a great foot, fluid mover and one who will add value. 44D has progeny working at Tandem T Farms, Twisted Gate Cattle Co., Dunstall Farms and Danny Homeaks. Take advantage of a black Eldorado son to add to your bull line-up off a cow who gets the job done year after year.

Gestation 284 days / Homo Polled / Hetero Black

BW
90 lbs.

Sept 2/25 WW
990 lbs.

Jan 11/26 WT
1430 lbs.



TSF Designer 44D



TSF Kolby 40K

31 TSF NORDIC 21N

TSF 21N

PG1513742

Jan. 7, 2025

SVS TYCOON 841F
S: **DEEG EL DORADO 81K**
WLB 18D SOFIE 497F

BCLR AMBITION E301
D: **TSF KOLBY 40K**
TSF FOXY 1Y

SVS BROOKS 669D
SVS RED ANNIE 411B
SFM STOUGHTON 18D
WLB 52Z TARA 4164D
CDI AMBITION 255C
BCLR MISS AUTHORITY A301
PRL MAGNITUDE 362M
PRL RED REQUEST 241R

E P D	CE	BW	WW	YW	MILK	MCE	MWWT
	3.2	6.0	84.9	127.8	23.4	1.9	65.9

An Eldorado son who is off a sweet Ambition daughter who's bull was a high selling heifer bull last year going to Dercam Farms Inc. 21N packs it all together with his profile, dimension and eye appeal going back to the good ole 241R in his pedigree.

Gestation 287 days / Homo Polled / Non-dilutor

BW
96 lbs.
Sept 2/25 WW
830 lbs.
Jan 11/26 WT
1260 lbs.



TSF Kelly 3K

32 TSF NEW MAN 106M

TSF 106M

PG1510112

Dec. 23, 2024

SVS TYCOON 841F
S: **DEEG EL DORADO 81K**
WLB 18D SOFIE 497F

WLB TOP TIER 456G
D: **TSF KELLY 3K**
PRL TELLY 488T

SVS BROOKS 669D
SVS RED ANNIE 411B
SFM STOUGHTON 18D
WLB 52Z TARA 4164D
MAR MAC UTAH WHISKY 52E
WLB 47Y FAE 343E
PELTONS POWERCAT 344G
PRL RED RYDER 235R

E P D	CE	BW	WW	YW	MILK	MCE	MWWT
	4.3	5.5	88.9	132.4	23.4	2.0	67.9

A meat machine who has so much muscle mass and overall balance. Smooth made and is one who is a converter of feed since weaning. His Top Tier dam 3K is off the 488T cow and is a sweet female to take her dams spot in production who is the ideal size, with a beautiful udder and just getting started. 106M has width, depth and follows the Eldorado pattern. He will be easy to spot sale day.

Gestation 277 days / Homo Polled / Non-dilutor

BW
96 lbs.
Sept 2/25 WW
845 lbs.
Jan 11/26 WT
1285 lbs.



Century Katrina 3K

33 TSF NEILSON 60N

TSF 60N

PG1514381

Feb. 9, 2025

R PLUS REDDINGTON 0143H
S: **TSF LUKE 32L**
TSF FIERRA 61F

ERIXON HIGH ROLLER 143B
D: **CENTURY KATRINA 3K**
ZSL MISS CAPONE 118E

R PLUS VENOM 4006B
MISS R PLUS 6168D
HARVIE RED SUMMIT 54B
TSF KAHLUA 26A
ERIXON DEALER 63Z
ERIXON LADY 133U
MRL CAPONE 130B
ZSL MISS CHILL 44B

E P D	CE	BW	WW	YW	MILK	MCE	MWWT
	2.1	5.3	82.0	121.8	23.6	2.6	64.6

A solid patterned bull who's thick made dam we purchased from Century Simmentals. 60N is balanced, deep ribbed and one who will sire consistency going back to 26A on the sire side. TSF Luke, was used on a small group of females for clean up and he had tremendous length, depth and great feet and legs. Luke was sold to Schendel Ranch & Holdings Ltd. Neilson is a younger bull with lots of potential.

Gestation 283 days / Homo Polled / Non-dilutor

BW
98 lbs.
Sept 2/25 WW
785 lbs.
Jan 11/26 WT
1200 lbs.

34

TSF NEXUS 110M

TSF 110M

BPG1510128

Dec. 26, 2024

NCB COBRA 47Y

S: **MADER WALK THIS WAY 224B**

MADER P IRON SUGAR 7X

SVS WHISKEY 643D

D: **TSF FASHION 53F**

TSF CASSIE 17C

LFE VIPER 455U

NCB MISS DREAM 22T

MADER P BLACK IRONMAN 22U

LFE FAMOUS 632T

MRL RED WHISKEY 101B

3D MISS SARA 158U

HSF HIGH ROLLER 12T

TSF SOUTHERN GIRL 2A

E P D	CE	BW	WW	YW	MILK	MCE	MWWT
	9.4	2.1	101.6	149.8	29.1	7.5	79.9

A standout WTW son who has tremendous length, leg and foot structure and the one who was the heaviest at weaning off 53F who has yet to give us a female. 110M is the kind to replicate in the steer pen or in the replacement heifer pen as the steers will push the scale down and the females will be the type that ranchers hunt down to put into the cowherd. This type will purely get the job done and the cattleman will be rewarded. He is a balanced package with all the goods with maternal brothers selling to Joe Howlett, Beniuk Farms, Wyatt Dahm, Prins Bros Cattle and Robert Sandsbraaten. Nexus puts all the pieces together – a definite sale feature with his numbers and pedigree.

Gestation 282 days / Homo Polled / Hetero Black

BW
85 lbs.

Sept 2/25 WW
1090 lbs.

Jan 11/26 WT
1490 lbs.



TSF Fashion 53F



35

TSF NITRO 24N

TSF 24N

BPG1513745

Jan. 7, 2025

NCB COBRA 47Y

S: **MADER WALK THIS WAY 224B**

MADER P IRON SUGAR 7X

RAINBOWRIVER SOCHI 1096J

D: **TSF LIVY 55L**

TSF HALO 105H

LFE VIPER 455U

NCB MISS DREAM 22T

MADER P BLACK IRONMAN 22U

LFE FAMOUS 632T

CMS SOCHI 307A

MISS R PLUS 9144G

HART STATE OF WAR 056C

TSF GLORY 52G

E P D	CE	BW	WW	YW	MILK	MCE	MWWT
	17.8	-2.8	77.5	115.9	23.4	10.8	62.2

Nitro is your bull if you are looking for calving ease. He ranks top 1% in CE, BW and MCE which are important numbers when it comes to the heifer pen. He's smooth made with a little shorter gestation and still weaned off at 830 off a sweet 1st calf heifer who put it all together on her first go. Nitro will get you fired up if you are looking for calving ease.

Gestation 282 days / Homo Polled / Hetero Black

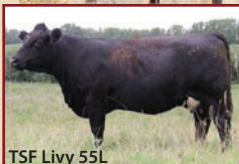
BW
60 lbs.

Sept 2/25 WW
830 lbs.

Jan 11/26 WT
1175 lbs.



TSF Livy 55L



36

TSF NIXON 103M

TSF 103M

BPG1510108

Dec. 21, 2024

WHEATLAND BULL 131L

S: **SAND RANCH HAND**

SAND LUCKY CHARMER

RAINBOWRIVER SOCHI 1096J

D: **TSF LEVEE 63L**

TSF JJ 59J

NICHOLS BLK DESTINY D12

WHEATLAND LADY 908J

LCHMAN LUCKY BUCK 7049C

B55

CMS SOCHI 307A

MISS R PLUS 9144G

LBR CROCKET R81

TSF CANDY 16C

E P D	CE	BW	WW	YW	MILK	MCE	MWWT
	15.1	-0.9	72.4	106.4	25.6	9.0	61.8

Nixon is a cool package with a 72 lb BW and a 925 WWT. Ranch Hand left his mark on this stout, smooth made bull who gets out and moves like a cat. A blend of genetics that are proven and will add value to any calf crop. Heifer pen safe with his Sochi dam. He patrols the fence here and is always on detail when something is going on.

Gestation 280 days / Homo Polled / Homo Black

BW
72 lbs.

Sept 2/25 WW
925 lbs.

Jan 11/26 WT
1365 lbs.



TSF Levee 63L





TSF Lauren 1L

37 TSF NEWMAN 51N

TSF 51N

PG1514359

Jan. 27, 2025

W/C LOADED UP 79C
S: **BLACK GOLD APPROVAL 71E**
RF CERTAINLY FLIRTIN 532C

R PLUS REDDINGTON 0143H
D: **TSF LAUREN 1L**
TSF GODDESS 73G

W/C LOADED UP 1119Y
MISS WERNING KP 8543U
SVS CAPTAIN MORGAN 11Z
RF CERTAINLY FLIRTIN 202Z
R PLUS VENOM 4006B
MISS R PLUS 6168D
SVS WHISKEY 643D
PRL TELLY 488T

E P D	CE	BW	WW	YW	MILK	MCE	MWWT
	11.8	1.3	67.9	94.8	18.4	4.5	52.4

Black Gold Approval son who is dark red, smaller framed with good bone and structure. We have used his sire for a few years on heifers with great results. Our high selling bred heifer this past October was sired by Approval. They are functional cattle that come small with lots of growth and eye appeal. Off a solid made, beautiful uddered Reddington female who will have a solid future.

Gestation 281 days / Homo Polled / Non-dilutor

BW
80 lbs.
Sept 2/25 WW
775 lbs.
Jan 11/26 WT
1135 lbs.



TSF Lassi 46L

38 TSF NORTHGATE 102M

TSF 102M

BPG1510107

Dec. 20, 2024

W/C LOADED UP 79C
S: **BLACK GOLD APPROVAL 71E**
RF CERTAINLY FLIRTIN 532C

IPU BENTLEY 81F
D: **TSF LASSI 46L**
TSF GARMIN 80G

W/C LOADED UP 1119Y
MISS WERNING KP 8543U
SVS CAPTAIN MORGAN 11Z
RF CERTAINLY FLIRTIN 202Z
WHEATLAND BENTLEY 630D
CLAYHILL FANCY LUCA 39A
TSF EXPRESS 22E
TSF EXPOS'E 1E

E P D	CE	BW	WW	YW	MILK	MCE	MWWT
	14.6	-0.1	69.5	93.6	20.0	6.6	54.8

These Bentley females know how to work and this bull will be a CE specialist as well as add some growth and style to his calf crop. Weaned off this 1st calf heifer at 860 and has lots of length and frame. Has a great look to him and these Approval sons are consistent with shorter gestations. Grand-dam 80G has definitely started to make her mark in the female replacement department. Full brother to 46L sold to Maria Champagne.

Gestation 276 days / Homo Polled / Hetero Black

BW
70 lbs.
Sept 2/25 WW
860 lbs.
Jan 11/26 WT
1250 lbs.



TSF Lady Lou 109K

39 TSF NANDO 55N

TSF 55N

BPG1514363

Jan. 31, 2025

HART STATE OF WAR 056C
S: **TSF LEROY 101K**
TSF JAZZY 25J

WS BEEF KING W107
D: **TSF LADY LOU 109K**
TSF HONESTY 103H

WELSH'S WARSAW 312Z
HART MISS 102A
TSF FAWCETT 55F
SIMMENTAL
WS BEEF MAKER R13
WS MISS DREAMBOAT T17
HSF HIGH ROLLER 12T
TSF GLOSSY 62G

E P D	CE	BW	WW	YW	MILK	MCE	MWWT
	11.5	0.3	79.5	116.9	21.1	7.3	60.9

Small BW bull off a ¾ blood State of War son who we sold and were able to use in the heifer pen for clean-up. 55N has a stacked pedigree of CE and will be a great addition to any heifer pen. Smooth, fine made with style. His Beef King dam and Highroller grand-dam are definitely females that have a huge future here developing a cow family which is complete and the type that get the job done.

Gestation 288 days / Homo Polled / Hetero Black

BW
80 lbs.
Sept 2/25 WW
740 lbs.
Jan 11/26 WT
1070 lbs.

40

TSF NANTON 49N

TSF 49N

BPG1514357

Jan. 23, 2025

HOOKS SHEAR FORCE 38K

S: **WHL GOLD KEY 1619D**

CMS SODA POP 417B

R PLUS REDDINGTON 0143H

D: **TSF LINDY 52L**

SVS HONEY 560C

NICHOLS LEGACY G151

C&D TRACY

DRAKE POKER FACE 2X

HPF CREAM SODA Y010

R PLUS VENOM 4006B

MISS R PLUS 6168D

MRL SUMMIT 65Z

REMINGTON HONEY 213U

E P D	CE	BW	WW	YW	MILK	MCE	MWWT
	9.9	1.8	74.8	106.6	24.2	4.0	61.6

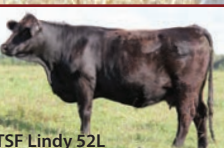
Deep sided, smooth made Gold Key son who is off a big ribbed, angular Reddington daughter who did a job on her first try. Nanton has a shorter gestation and a small BW to be used in the heifer pen or on some second calvers. User friendly with all the characteristics that Gold Key and Red Heat (full brother) are noted for.

Gestation 281 days / Homo Polled / Hetero Black

BW
85 lbs.

Sept 2/25 WW
825 lbs.

Jan 11/26 WT
1170 lbs.



TSF Lindy 52L



41

TSF NIKE 42N

TSF 42N

PG1514349

Jan. 18, 2025

MRL STATEMENT 3F

S: **KWA CAN-AM 123H**

KWA MS ROCK 14X

WS BEEF KING W107

D: **TSF LIONESS 11L**

TSF JADE 61J

R PLUS VENOM 4006B

MRL MISS 6600D

KWA RED ROCK 5T

KWA MS BARON 9U

WS BEEF MAKER R13

WS MISS DREAMBOAT T17

SVS WHISKEY 643D

TSF EMERY 43E

E P D	CE	BW	WW	YW	MILK	MCE	MWWT
	13.0	1.2	84.7	129.0	30.2	5.6	72.6

A Can-Am son who will work in the heifer pen with his fine bone, smooth front end and profile. Smaller framed bull with shape and scrotal. Off a Beef King heifer who speaks for herself as she is the type. Grand-dam 61J is the dam of Lot 21.

Gestation 288 days / Homo Polled / Non-dilutor

BW
80 lbs.

Sept 2/25 WW
850 lbs.

Jan 11/26 WT
1285 lbs.



TSF Lioness 11L



42

TSF NOBLE 7N

TSF 7N

BPG1510147

Jan. 2, 2025

WS BEEF MAKER R13

S: **WS BEEF KING W107**

WS MISS DREAMBOAT T17

SKORS BLACK ENTICER 4W

D: **TSF LUCY 24L**

TSF CHICKLET 44C

HOOKS SHEAR FORCE 38K

DCR MS RIBEYE N72

CNS DREAM ON L186

WS MISS FULL LOAD P176

SHS ENTICER P1B

SKORS MISS JOKER 10N

JDF WALLBANGER 61Z

TSF MELISSA 104X

E P D	CE	BW	WW	YW	MILK	MCE	MWWT
	11.3	1.6	84.5	125.4	22.0	7.7	64.3

Heifer bull alert – Beef King X 4W combined and we got a surefire CE bull. Long made, correct with smoothness and off a cow family which has been strong. His dam 24L is the type you would like a herd of and one cannot knock a 4W female as they are about as ranch made and the most functional type of female one can make. Take a look at Noble as he will service the heifer pen.

Gestation 286 days / Homo Polled / Hetero Black

BW
70 lbs.

Sept 2/25 WW
840 lbs.

Jan 11/26 WT
1305 lbs.



TSF Lucy 24L



Welcome FROM **CIRCLE Z SIMMENTALS**



Hello and welcome back to the 15th Annual Triangle Stock Farm Bull sale! I would like to thank Vance and Michele for having me be a part of their annual sale for the fourth year.

This year I have brought an impressive line up of red and black Simmental bulls for your consideration. This set of bulls has to be the most consistent bunch I have raised to date!

I would like to thank all of the buyers and bidders from past sales. Without your continued support sales like this could not happen.

The bulls are available for viewing at any time before the sale at the farm. If you have any questions about my bulls or my breeding program, please feel free to reach out. I look forward to seeing you on February 20th.

Thank you for your time!

-Daniel Ziehr

CIRCLE Z SIMMENTALS

Daniel Ziehr
51131 Range Road 22
Parkland County, AB T7Y 2H7
C: 780-863-9447

CONSIGNOR OF LOTS 43-50



Deeg/CD Ms Sofie 129J

43 CZS NIGHT TRAIN 4N

CZS 4N BPG1531190 Jan. 2, 2025

RF CALIBER 014G
S: **IPU 30-06 47K**
IPU MS. BLACK LOTTO 144A

NUG LANDMARK 310G
D: **DEEG/CD MS SOFIE 129J**
WLB 18D SOFIE 497F

NGDB STRUCTURE 34D
RF NOT JUST A FLIRT 404B
SPRINGCREEK LOTTO 52Y
IPU MS HERO 113P
WS BEEF KING W107
MISS CAMDEN 53E
SEM STOUGHTON 18D
WLB 52Z TARA 4164D

EPD	CE	BW	WW	YW	MILK	MCE	MWWT
	5.6	3.9	88.7	132.7	23.1	4.6	67.5

I have been trying to improve the black side of my herd, after searching for a new bull I came across IPU 30-06 47K. I used him a few select cows and the results are pretty impressive. 4N is a perfect example. He's super soggy, moves like a cat with a jet black hair coat. His Dam 129J, is a moderate framed cow with tons of depth and has an impressive pedigree. This is the best black bull to date I have produced.

BW
90 lbs.
Sept 2/25 WW
868 lbs.
Jan 4/26 WT
1160 lbs.

Gestation 283 days / Homo Polled Test Pending



IPU 30-06 47K

44 CZS NAPALM 8N

CZS 8N BPG1531180 Jan. 11, 2025

RF CALIBER 014G
S: **IPU 30-06 47K**
IPU MS. BLACK LOTTO 144A

HSF HIGH ROLLER 12T
D: **SKORS MS BARBEAU 84B**
SKORS GUM BALL 105Z

NGDB STRUCTURE 34D
RF NOT JUST A FLIRT 404B
SPRINGCREEK LOTTO 52Y
IPU MS HERO 113P
TJ 57J THE GAMBLER
HSF RED FORTUNES SIS 33
MR NLC UPGRADE U8676
SKORS MS BUILDER 152R

EPD	CE	BW	WW	YW	MILK	MCE	MWWT
	6.9	2.8	88.7	129.2	26.3	5.3	70.7

Here is a 30-06 son out of a High Roller daughter. There's a lot to like about this bull. 8N has a nice long spine with a deep soggy middle and a great set of EPD's. These 30-06 sons really stand out in the pen with their all around presence. I know 8N will make a great herd bull for your program.

BW
95 lbs.
Sept 2/25 WW
792 lbs.
Jan 4/26 WT
1170 lbs.

Gestation 292 days / Homo Polled Test Pending

45

CZS NICK 5N

CZS 5N

PG1531183

Jan. 5, 2025

SVS RANCHER 42H

S: **RUSYLIVIA/SC RIGHT HAND MAN 14L**
WFL RED SAGE 506C

TNT EVERCLEAR A321

D: **TSF EVEY 30E**
PORTERS 863T

SVS TYCOON 841F

HLTS SAMMIE

R PLUS RELOAD 2006Z

WFL RED SAGE 1003Y

DCR MR MOON SHINE X102

TNT MISS U170

PRL MAGNITUDE 362M

MS PRL HALO-AGGIE 103H

E
P
D

CE

BW

WW

YW

MILK

MCE

MWWT

10.7

1.8

80.2

114.4

23.4

6.3

63.5

Here is a moderate framed RHM son. I am a fan of this bull, he has a smooth set of shoulders, a good foot and a long spine that RHM throws with consistency. Speaking of consistency, TSF 30E has produced quality bulls for me year after year. She is one of my favourite cows in the pen.

Gestation 292 days / Homo Polled Test Pending

BW
93 lbs.Sept 2/25 WW
886 lbs.Jan 4/26 WT
1230 lbs.

TSF Evey 30E

46

CZS NUBB 7N

CZS 7N

PG1531187

Jan. 8, 2025

SVS RANCHER 42H

S: **RUSYLIVIA/SC RIGHT HAND MAN 14L**
WFL RED SAGE 506C

BCLR AMBITION E301

D: **TSF KATE 32K**
TSF CANDY 16C

SVS TYCOON 841F

HLTS SAMMIE

R PLUS RELOAD 2006Z

WFL RED SAGE 1003Y

CDI AMBITION 255C

BCLR MISS AUTHORITY A301

TNT GUNNER N208

TSF APRIL 24A

E
P
D

CE

BW

WW

YW

MILK

MCE

MWWT

3.9

4.6

90.4

128.8

22.6

4.4

67.8

Nubb has been a standout in the pen ever since he was born. I really like the make up of this bull. He has a smooth set of shoulders but has a ton of rib and top to him. His dam is a young female in my program who has raised two outstanding bulls back to back. These RHM sons are quite a consistent bunch.

Gestation 293 days / Homo Polled Test Pending

BW
100 lbs.Sept 2/25 WW
862 lbs.Jan 4/26 WT
1175 lbs.

TSF Candy 16C

47

CZS NIX 13N

CZS 13N

PG1531184

Jan. 11, 2025

SVS RANCHER 42H

S: **RUSYLIVIA/SC RIGHT HAND MAN 14L**
WFL RED SAGE 506C

HSF HIGH ROLLER 12T

D: **TSF GEMSTONE 42G**
TSF EVA 14E

SVS TYCOON 841F

HLTS SAMMIE

R PLUS RELOAD 2006Z

WFL RED SAGE 1003Y

TJ 57J THE GAMBLER

HSF RED FORTUNES SIS 33

PRL PORTERHOUSE REGENT

PORTERS 256T

E
P
D

CE

BW

WW

YW

MILK

MCE

MWWT

9.7

2.1

89.4

126.7

30.7

6.1

75.4

Nix is the full package. From his outstanding list of EPD's to his length, depth and great feet there's very few if any holes to find in this bull. His dam 42G is a milk machine with a quiet disposition. If you want to increase milk production in your females and add extra pounds on your steers in the fall, this is the bull for you.

Gestation 294 days / Homo Polled Test Pending

BW
90 lbs.Sept 2/25 WW
924 lbs.Jan 4/26 WT
1265 lbs.



Right Hand Man 14L

48 CZS NITRO 1N

CZS 1N

PG1531189

Jan. 1, 2025

SVS RANCHER 42H
S: **RUSYLVA/SC RIGHT HAND MAN 14L**
WFL RED SAGE 506C

SUNNY VALLEY FORCE 47Y
D: **TSF KATIE 107J**
TSF EMMY LOU 31E

SVS TYCOON 841F
HLTS SAMMIE
R PLUS RELOAD 2006Z
WFL RED SAGE 1003Y
WS BEEF KING W107
SUNNY VALLEY SASHA 28W
TSF DEUCE 22Z
PRL NICKI 230N

E P D	CE	BW	WW	YW	MILK	MCE	MWWT
	8.4	2.7	88.6	129.3	25.3	5.2	69.6

Nitro is a great example of what Right Hand Man can do. He adds length, depth and an eye-catching look to his offspring. 1N has a deep red coat paired with a big blaze, he should brand his calves much the same. This is a bull I am very proud of, he will really enrich your herd overall!!

Gestation 284 days / Homo Polled Test Pending

BW
90 lbs.
Sept 2/25 WW
958 lbs.
Jan 4/26 WT
1310 lbs.



49 CZS NEPTUNE 3N

CZS 3N

PG1531181

Jan. 2, 2025

MRL RED WHISKEY 101B
S: **SVS BROOKS 669D**
SVS RED SARA 92X

WS BEEF KING W107
D: **TSF CARMELO 4C**
PRL RED REQUEST 241R

TNT BOOTLEGGER Z268
MRL MISS 677Y
SUNNY VALLEY UP-ROAR 90U
3D MISS SARA 158U
WS BEEF MAKER R13
WS MISS DREAMBOAT T17
BBS RED 500 K10
PRL JAYCEE 208J

E P D	CE	BW	WW	YW	MILK	MCE	MWWT
	8.9	3.2	82.7	120.2	23.6	6.3	65.0

Here is a deep red bull out of the great SVS Brooks 669D. With the addition of Beef King on the dams side, I think this breeding really hit the mark. 3N is a performance bull that will add length to your calves ultimately adding some extra weight to your calf crop

Gestation 288 days / Homo Polled Test Pending

BW
95 lbs.
Sept 2/25 WW
822 lbs.
Jan 4/26 WT
1170 lbs.



Mader Walk This Way

50 CZS MOMMA'S BOY 20M

CZS 20M

PG1531186

Dec. 28, 2024

NCB COBRA 47Y
S: **MADER WALK THIS WAY 224B**
MADER P IRON SUGAR 7X

BLACK GOLD APPROVAL 71E
D: **TSF KASEY 16K**
EAST POPLAR SHOWGIRL 1H

LFE VIPER 455U
NCB MISS DREAM 22T
MADER P BLACK IRONMAN 22U
LFE FAMOUS 632T
W/C LOADED UP 79C
RF CERTAINLY FLIRTIN 532C
IPU LIEUTENANT 24E
EAST POPLAR 68M SHOWGIRL 716E

E P D	CE	BW	WW	YW	MILK	MCE	MWWT
	9.1	1.2	80.1	116.9	19.9	5.8	60.0

I am very impressed with this Walk This Way son. He's got a super wide top, lots of rib and great bone structure. For a moderate birthweight bull, he ended up having the highest weaning weight. 16K, the dam of Mommas boy, is a very nice moderate framed cow with a nice tight udder. This bull has calving ease and great performance, definitely a bull to watch.

Gestation 282 days / Homo Polled Test Pending

BW
89 lbs.
Sept 2/25 WW
960 lbs.
Jan 4/26 WT
1350 lbs.

SEMEN ★ 50 STRAWS SELL



DAM: MADER DARLIN' 4H



TWIN SPRINGS BGS RANGER 6M

BLT 6M

Jan. 16, 2024

A: 10 units
B: 10 units
C: 10 units
D: 10 units
E: 5 units
F: 5 units

KWA RED ITALIAN 122E
S: **WFL MOUNTAIN VIEW 4J**
WFL 9072 MS RED DOLL 913G

MRL CAPONE 130B
KWA MS ROCK 14X
WFL WESTERDALE 6E
WFL MS RED DOLL 9072W

SVS BETTS 808F
D: **MADER DARLIN' 4H**
IRCC DARLIN' 613D

BGS/BM CAPTAIN SCREAM 63D
WFL RED SAGE 506C
MR HOC BROKER
DESTINY ODIN SHEA

BW
86 lbs.
WW
914 lbs.

E P D	CE	BW	WW	YW	MILK	MCE	MWWT
6.5	3.2	92.2	128.9	18.2	2.0	64.3	

ONLY SEMEN TO SELL IN 2026

HOMOZYGOUS POLLED/NON DILUTOR

Introducing Ranger is pretty exciting as we searched all spring for a Mountain View son and when we found this fella it seemed all the pieces fell into place as he is out of a flawless cow. Ranger is a soggy, big middled bull with tremendous muscle expression, length of spine, hair and eye appeal. A stout bull with soundness, great disposition, presence and style. Calves have arrived and they are special – vigorous, hairy, dark red, correct with lots of growth, eye appeal and style.

Offering semen lots in packs of 10 and 5 will give you an opportunity no matter how big or small your breeding herd is and we look forward to working with you. Ranger is stamped with predictability as you study his pedigree and numbers.

Semen Canadian Qualified- stored at Alta Genetics. Buyer is responsible for all shipping costs
Owned by Triangle Stock Farm



HOMO POLLED & COAT COLOUR

- "Homo" is short for Homozygous, i.e.) Homozygous Polled
- "Hetero" is short for Heterozygous, i.e.) Heterozygous Polled
- A red animal born out of two black parents will be diluter free.
- A Diluter Carrier carries one dilution gene and one non-dilution gene. Diluter Carriers can pass either gene onto their progeny, therefore some calves may express a diluted coat colour while other calves have a normal coat colour.
- If they do pass a dilution gene onto their progeny, a black calf will be diluted to grey and a dark red calf will be diluted to light red.
- If they pass a non-dilution gene onto their progeny, a black calf will be black and a dark red calf will be dark red.

WHAT DO THE RESULTS MEAN?

BULL	COW	RESULTING CALVES
HOMO POLLED - The bull carries two copies of the polled gene		
Homo Polled	Homo Polled	100% Polled
	Hetero Polled	100% Polled
	Horned	100% Polled
HETERO POLLED - the bull is polled, but carries one polled gene and one horned gene		
Hetero Polled	Homo Polled	100% Polled
	Hetero Polled	75% Polled, 25% Horned
	Horned	50% Polled, 50% Horned
HOMO BLACK - the bull carries two copies of the black gene		
Homo Black	Homo Black	100% Black
	Hetero Black	100% Black
	Red	100% Black
HETERO BLACK - the bull is black in colour, but carries one black gene and one red gene. Black is dominant to red, so the red colour is not expressed when it is paired with a black gene		
Hetero Black	Homo Black	100% Black
	Hetero Black	75% Black, 25% Red
	Red	50% Black, 50% Red
RED - the bull carries two copies of the red gene. This example assumes the bull is diluter free.		
Red	Homo Black	100% Black
	Hetero Black	50% Black, 50% Red
	Red	100% Red

©RAINBOW RIVER SIMMENTALS

GESTATION

We have for years calculated our bulls Gestation Length and for good reason as the heritability of it is moderately high. The gestation period is noted for each bull in the catalog as our breeding program allows us to track this very easily and we think it is an important trait to look at as it influences the birth weights of these bulls and the cow's calving interval. Other factors that affect length of gestation are breed, calf's sex, environment (cold weather) and genetics (breeding for shorter gestation can improve calving ease). Shorter gestations often mean lighter calves, easier births, and successful re-breeding. A trait that is worthy of providing as it does influence.



CUSTOMER TESTIMONIAL

~Great friends and supporters of TSF genetics buying 17 bulls through the years!~

My wife and I have been supporting Michele and Vance with their program since the second bull sale. With our 180 head cowherd the bulls purchased over the years have provided calving ease, performance and disposition of the calves. Which has created peace of mind from calving easy to sale day where we usually are top of the line or close to it. And we have a great herd of easy to deal with animals which comes through from the genetics. We will for sure be looking for more great bulls through Triangle Stock Farms in the coming years!

Rob and Bonnie Sandsbraaten

REFERENCE Sires 2025



RF CAILBER 014G



IPU 30-06 47K



KWA ESTATE 24K



WS BEEF KING W107



DEEG EL DORADO 81K



TSF DEUCE 22Z



IPU BENTLEY 81F



MADER WALK THIS WAY



MR SR HIGHLIFE G1609



TERMS The terms of the sale are cash or cheque, payable at par at the sale location. The right of property shall not pass until after settlement has been made; no invoicing on buyers in attendance, unless previous arrangements have been made. Every animal sells to the highest bidder and in cases of disputes, the auctioneer's decision will be final. Current exchange rates will be announced sale day. All monies are in Canadian funds.

BIDDING Each animal will sell to the highest bidder... no by-bidding will be permitted.

DISPUTES Bidding will be reopened between the parties involved in dispute. If no further bidding is made, the buyer will be the person from whom the auctioneer accepted the last bid. The auctioneer's decision on all disputes will be final.

ANNOUNCEMENTS All announcements made from the auction block will take precedence over the printed matter in the catalogue. Buyers are therefore cautioned to pay close attention to such disclosures.

BREEDER'S GUARANTEE Should any bull fourteen (14) months of age or over fail to prove a breeder after being used on females known to be breeders, the matter shall be reported in writing to the seller within six (6) months following the date of purchase or six (6) months after the bull has reached fourteen (14) months of age. The seller will have the right and privilege of six (6) months to prove the bull a breeder. No guarantee is given that semen collected from the bull will freeze.

EXCEPTION GUARANTEE In cases where the animal is subjected to any hormonal or surgical reproduction techniques after the sale, this guarantee shall be null and void.

GUARANTEE Each animal becomes the purchaser's risk immediately after the animal is sold. All animals in this sale will be sold under the terms and guarantees set forth by the Canadian Simmental Association, with regard to health, freedom from defects and from both reproductive and specific genetic unsoundness.

CERTIFICATE OF REGISTRATION Each animal will carry papers issued by the Canadian Simmental Association, unless otherwise specified. A certificate of registry duly transferred will be furnished to the buyer for each animal after payment has been made.

LIABILITIES All persons attend the sale at their own risk. The seller and facility owner assume no liability, legal or otherwise, for any accidents that occur. The buyer must look to the seller for fulfillment of all guarantees and representations made hereunder.

RIGHTS AND OBLIGATIONS The above terms and conditions of the sale shall constitute a contract between the buyer and seller and be equally binding to both. Resale of animals following purchase in this sale shall constitute a separate transaction and the rights and obligations of the two parties connected thereto are not covered by the terms and conditions of this sale.

DELIVERY We will assist in arranging transportation wherever possible. Each animal becomes the risk of the purchaser as soon as sold.

INSURANCE Will be available sale day. We strongly recommend that insurance is purchased for full value.

ERRORS All announcements at sale time, written or oral, supercede any written material in the catalogue.

Return Undeliverable
Canadian Addresses to

TRIANGLE STOCK FARM

52117 Range Road 21
Parkland County, Alberta T7Y 3C2

Mark Your Calendar

TRIANGLE STOCK FARM

15th Annual Bull Sale

FRIDAY, FEBRUARY 20, 2026 AT 1:00PM

at the farm, Parkland County, AB



WATCH FOR THE

**Triangle Stock Farm "Keepin It Simple" Female Sale
October 23-24, 2026, DLMS Farm Gate**