

# Red Willow Ranch Ltd.

Annual *Simmental* Bull & Female Sale



Monday, *March 9th*, 2026 | Cut Knife, SK | 2PM C.S.T

# Red Willow Ranch Ltd.

## 16th Annual *Simmental* Bull & Female Sale

### Schedule *of* Events *for* Sale Day

Viewing.....10:00 AM CST

Lunch.....12:30 PM CST

Sale Time...2:00 PM CST

### Table *of* Contents

Lots 1 - 61 Bulls

Lots 62 - 75 Purebred Heifers

Lots 76 - 86 Commercial Heifers

### RWR Contact Info

Box 542 Cut Knife, SK S0M 0N0

[www.redwillowranchltd.com](http://www.redwillowranchltd.com)

Josh Cell: 306.390.7745

Darren Cell: 306.398.7554

### Catalogue Production

Catalogue production was completed by Jada Tyler of Red Willow Ranch Ltd. EPDs are current and up-to-date as of publication date. Information in this document is accurate, but any updates given by the owners, auctioneer, or sales staff will take precedence over the information in the catalogue.

### Photos & Videos

Photos and videos are completed by Josh and Jada Tyler of Red Willow Ranch Ltd. Photos were taken in December and videos will be available mid-late February on both [cattlevids.ca](http://cattlevids.ca) and our website: [www.redwillowranchltd.com](http://www.redwillowranchltd.com)

### Sale Terms & Conditions

Cattle will sell under the standard terms and conditions set out by the Canadian Simmental Association. These are available upon request.

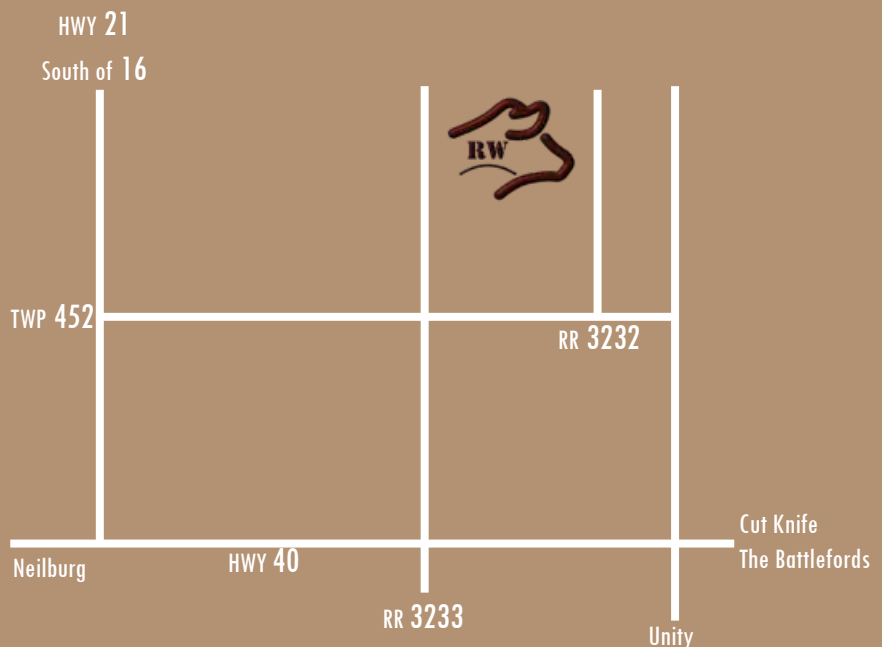
### Directions *to* RWR

**From HWY 21 South:**

4 miles East on TWP 452, 1/2 mile North on RR 3232

**From HWY 40:**

4 miles North on RR 3233 to the stop sign, 1 mile East  
1/2 mile North



# Sale Day Information

## Monday, March 9, 2026

### Sale Day Contacts

Josh Tyler.....306.390.7745  
Darren Tyler.....306.398.7554  
Darryl Snider.....780.385.5561  
Rob Voice.....306.270.6082  
Cody Haney.....403.845.8806

### Sale Day Consultants

Jim Pulyk.....780.787.0646  
Bryce Weiss.....306.662.8733  
Darcy Lakevold.....780.753.8669  
Casey Lawes.....780.753.1466  
Jesse Lawes.....780.753.8590  
Taylor Richards.....306.821.4169

### Auctioneer

Dan Skeels.....403.783.1217

### Ringmen

Darcy Lakevold.....780.753.8669  
Darryl Snider.....780.385.5561

### Canadian Insurance

Jill Wildman.....780.305.1146  
All bulls remaining on the farm after March 9  
require insurance, unless alternate arrangements  
have been agreed upon prior to sale.

### Online Bidding

#### CAN'T MAKE THE SALE?

Watch, Bid & Buy Online

To view & bid visit [www.dlms.ca](http://www.dlms.ca), log-in with your username and password or sign-up for your free user account.

**BIDDERS** - click BUYER APPROVAL tab, select the sale you are interested in bidding at and click sign up.

For more information call:

Mark Shologan 780-699-5082 or Purebred Team 780-991-3025

**DLMS**  
[www.dlms.ca](http://www.dlms.ca)  
Direct Livestock Marketing Systems

**CANADA'S ONLINE SEEDSTOCK SOURCE.**

### VOLUME BUYER DISCOUNT

3 bulls - 3% discount  
4 bulls - 4% discount  
5 bulls - 5% discount

### DELIVERY:

A) Bulls picked up on sale day receive \$100 off/bull.  
B) Free delivery to central points in Alberta and Saskatchewan. Destinations beyond our regular delivery route will be cost-shared. We will do our best to deliver directly to your yard. Delivery will begin approximately April 1. Bulls remaining on farm after March 9 must be insured unless alternate arrangements have been agreed upon prior to sale day.

### CUSTOM LIVESTOCK TRANSPORTATION:

ELCO Livestock - Cody Doucette - 780.243.4412

### HEIFERS:

Purebred heifers will be delivered if needed. Commercial heifers shall be picked up sale day or shortly after.

### SIGHT UNSEEN:

If you're unable to make it to the sale, or to view the offering ahead of time, please give us a call. We are more than happy to discuss your programs and find the bull or female that best suits your operation. We will refer you to our sales staff on sale day. We do guarantee satisfaction upon delivery.

### IN-HERD SEMEN INTEREST:

Red Willow Ranch Ltd. reserves the right to collect 100 doses of in-herd semen from every bull in the offering. This is to be done at the new owner's convenience and the seller's expense.

### BREEDER'S GUARANTEE:

No guarantee is given that semen collected from sold bulls will freeze. We do not warranty injury or mismanagement.

### EXPORT CATTLE:

All health, duty, and any other US or CAD customer fees for US-bound cattle will be the financial responsibility of the buyer. Cost of delivery to the US border will be covered by the buyer unless otherwise negotiated.





Darren and Tina Tyler & Family

Josh, Jada, Stetson, & Waelyn Tyler

Welcome to our 16th annual Simmental bull and female sale. It's difficult to fathom we've been doing this for almost two decades now, but here we are. This year's offering truly does bring our strongest set of bulls to the sale. We've always selected easy-fleshing, high production cattle for several years and it's rewarding to see them perform and excel in real-world conditions. Our bulls are backed by a highly maternal cowherd and we pay a small tribute to some of those foundational females on page 6. We feel our bulls are right for the times where the pressure is on now, more than ever, to raise the kind of cattle that produce higher yielding carcasses. Our power bulls come to you today showcasing a more moderate frame without sacrificing performance. Our calving ease prospects continue to offer the growth required to maximize your profits off those first-calving females. The feedback from our customers continues to be positive as they report weaning off their heaviest sets of calves using our genetics in their herds, and we could not be more humbled by this!

Our fullblood bull group displays unmatched colour and pigment, easily becoming our most eye-appealing group of traditionals we've had the pleasure of raising. Our red bull highlights are deep in colour and capacity. They're a consistent set showcasing style, performance, and docility. Our black bull offering brings power, style, and a number of calving ease prospects for you to assess.

The purebred and commercial heifers are strong groups with a good selection of stylish femininity and powerful, broody, herd-building characteristics. The quality is that of previous years that you've come to know and expect.

With many commercial cattle producers seeing record profits, we encourage you to take careful consideration in securing herd bulls that are going to help capitalize on the upward trends we've been seeing.

Thank you to all those who have expressed interest in our program. Whether you've bid, bought, or stopped by just to tour and talk cattle, we truly appreciate the time you've spent on getting to know our operation and the trust you've placed in our program to serve yours.

Please contact us or the sales representatives anytime. We hope to see you on sale day, Monday, March 9, 2026!

- the Tylers



RWR 78D with her 2025 Heifer Calf



Scott Bohrson Taylor Richards Robert Voice Darryl Snider Jaxon Payne Martin Bohrson Nate Marin Cody Haney Riley Bohrson

## Welcome from the Bohrson Marketing Services Team

On behalf of the entire Bohrson Marketing Services team, we are proud to welcome you to the 16th Annual Red Willow Ranch Ltd. Bull & Female Sale. This event has firmly established itself as a must-attend stop on the spring sale calendar, and once again the Tyler family delivers an offering built on performance, consistency from an ideal working cowherd. Red Willow Ranch Ltd. is a performance-first program that never loses sight of the cow behind the calf. The sire power represented in this year's bull offering is as deep and proven as we've seen here, and it is backed by a maternal base that has been carefully built over generations. These bulls are bred to add pounds, efficiency, and longevity while maintaining the structure and functionality required to thrive in real-world environments.

The Fullblood division is once again a major highlight and speaks volumes about the direction and discipline of the program. This group is led by influential sire groups such as Output, who is doing an exceptional job stamping performance, consistency, and eye appeal, and Mogul, a breed-leading sire whose impact on growth, structure, and maternal quality continues to set the bar. You will also find strong representation from Kinsman, offering added power and balance, and Boone, a proven calving ease and maternal sire that has been widely trusted across the breed. Together, these sire groups create a remarkably uniform set of Fullblood bulls that combine colour, hair, fleshing ability, and long-term maternal strength.

The Red and Black Purebred divisions further reinforce the depth of sire power behind this offering. In the red bulls, the first calf crop by Glacier has been nothing short of impressive, bringing performance, shape, and consistency in a sire group that is clearly making his mark. Sysco continues to be a popular and reliable option, while Enterprise adds undeniable power and mass. High Roller rounds out the red and black sire lineup with his strong maternal influence and trusted calving ease, offering bulls that are versatile and easy to incorporate into a wide range of programs. The black bull offering is anchored by a high-octane sire group in Dimensional, bringing added performance, growth, and presence.

Supporting the bull offering is an outstanding group of purebred open replacement heifers, selected directly from the heart of the Red Willow cowherd. These females showcase the maternal quality, udder structure, and longevity that define the program. Alongside them, the renowned Red Willow pens of commercial open heifers once again stand among the very elite offered anywhere this spring because they are uniform, broody females that are built to generate profit from day one.

This sale offering is a true reflection of the Tyler family's commitment to breeding cattle that work and backed by powerful sires, an ideal cowherd, and a philosophy centered on long-term success with their customers. We encourage you to make plans to join us at the ranch near Cut Knife, Saskatchewan, on March 9th, or to contact Darren or Josh to discuss the cattle and arrange a tour prior to sale day. If any of us at Bohrson Marketing Services can be of assistance whether evaluating cattle, bidding sight unseen, or helping you identify the right genetics for your operation, please don't hesitate to reach out. We would be pleased to help you source your next herd bull or foundation female at Red Willow Ranch Ltd.

Best regards,

*- the Bohrson Marketing Team*



Silage 2025 - *Thank you to Smith's Custom Silaging*



Stetson won the carcass competition with his 1720lb homegrown steer.



# RWR Foundational Females



**RWR 63B** fall of 2025  
Dam of lots 8 & 22



**RWR 25C**



**RWR 55D**



**RWR 81D**  
Dam of lot 5



**RWR 78D**



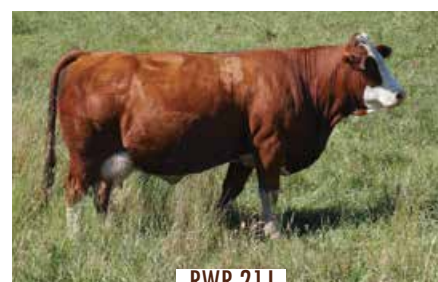
**RWR 96E**



**RWR 12F**



**RWR 16F**



**RWR 21J**  
Dam of lot 1



**IPU 74A**



**RWR 14C**



**RWR 58D**  
Dam of lot 39



**RWR 32G**  
Dam of lot 30



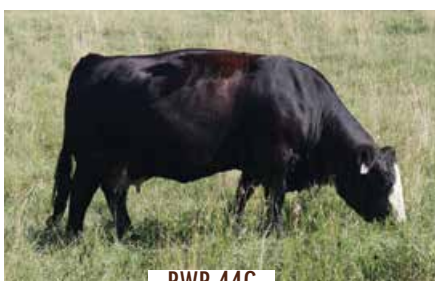
**RWR 72J**



**RWR 155K**  
Dam of lot 36



**RWR 1E**  
Dam of lot 54



**RWR 44G**  
Dam of lot 53



**RWR 36G**  
Dam of lot 58

*Quality Fullblood, Purebred, and Commercial Simmental Cattle*

*Red Willow Ranch Ltd. Simmental Bull & Female Sale 2026*



## Fullbloods



CROSSROAD OUTPUT 92K



SAJ MOGUL 42H



SAJ BOONE 84J

## Reds



BLACK GOLD GLACIER 192L



MRL SYSCO 14D



BLL ENTERPRISE 153J

## Blacks



WHEATLAND DIMENSIONAL 114J



IPU 37G HIGH ROLLER 25J



WLB BOUNTY HUNTER 365C

## Supporting Sires



Westgold Standout 42Z



RWR Outstand 16B



KUZ MR. Molson 393D



RWR Fireball 35B



SBMC Heritage 19G



Crossroad Connected 12G



LFE Beast Mode 305D



Erixon Black Impact 185D





Dam - RWR 21J



Maternal Sib - RWR 157M



## RWR SABRE 33N

CA-1505664 | RWR 33N | 6/1/2025 | Horned

BW 98 | ADJ WW 862 | ACT WW 1005 | ADJ YW 1633 | ACT YW 1540

CE	BW	WW	YW	MCE	MWW	Milk	API	TI
2.8	5.9	87.8	136.9	0.5	79.5	35.6	113.77	77.63

ANCHOR D OUTLOOK

S: **CROSSROAD OUTPUT 92K**  
CROSSROAD EKAYLA 91E

SU RIO GRANDE 55R

D: **RWR ELECTRA 21J**  
RWR ELECTRA 63B

Incredible eye appeal and power that you cannot really capture in a photo, we feel he's worth a trip to the ranch to assess in person. Born to a daughter off one of our foundational females, RWR Electra 63B, this bull isn't only all bull, he's backed by proven maternal traits you can't ignore. His dam, RWR 21J, is a no-miss female patterned almost perfectly with an ideal udder. Her first 2 sons averaged \$37,500, with her last year's calf selling to Wolfe Farms. RWR 33N is a reliable genetic package that will add length, power, and performance. He's deep red, and moves with ease on a big, square foot. We feel he's extremely correct for the times. Non-Diluter.



Dam - RWR 86F



## RWR OUTPUT 59N

CA-1506775 | RWR 59N | 11/1/2025 | Horned

BW 81 | ADJ WW 833 | ACT WW 970 | ADJ YW 1423 | ACT YW 1380

CE	BW	WW	YW	MCE	MWW	Milk	API	TI
8.3	3.3	73.4	93.9	3.7	70.9	34.2	110.32	69.81

ANCHOR D OUTLOOK

S: **CROSSROAD OUTPUT 92K**  
CROSSROAD EKAYLA 91E

KUZ MR MOLSON 393D

D: **RWR TAMARA 86F**  
RWR TAMARA 56B

This calf is super stylish in his make, moderate in frame and deep cherry red. He looks great on the move and is one that we really appreciate for his stoutness and mass, both attributes typical of the CRF Output sons. His dam, RWR 86F, is an honest cow with a tidy udder. She's heavily pigmented and a female we think highly of. We couldn't be happier with the job she did on this guy. Born at a modest 81lbs and weaning off at 970, he brings growth and versatility to the table. Non-Diluter.



Dam - RWR 89D



Maternal Sib - RWR 73J



## RWR/NCE OUTPUT 155N

CA-1508288 | RWR 155N | 6/2/2025 | Horned

BW 96 | ADJ WW 836 | ACT WW 870 | ADJ YW 1622 | ACT YW 1415

CE	BW	WW	YW	MCE	MWW	Milk	API	TI
4.8	4.8	80.8	122.5	2.5	73	32.6	114.33	74.42

ANCHOR D OUTLOOK

S: **CROSSROAD OUTPUT 92K**  
CROSSROAD EKAYLA 91E

WESTGOLD STANDOUT 42Z

D: **RWR MS ROWEENA 89D**  
IPU MS. ROWEENA 212X

Another Output son that's really turning up the heat. Being one of the youngest on offer, we've been impressed with how well he's kept up with the rest of the group. He's heavy haired, balanced in his make, and boasts that deep red colour that the majority of our offering has. His dam is a model cow with a near perfect udder, beautiful neck extension, and pigment. Mark this guy high on your list if you're in the market for raising those eye-catching, highly sought after females the industry demands. Non-Diluter.





## RWR/NCE OUTPUT 167N

CA-1508300 | RWR 167N | 14/2/2025 | Horned

BW 101 | ADJ WW 775 | ACT WW 785 | ADJ YW 1460 | ACT YW 1260

CE	BW	WW	YW	MCE	MWW	Milk	API	TI
3.4	5.2	71.5	107	1.9	66.6	30.8	103.04	66.12

ANCHOR D OUTLOOK

S: **CROSSROAD OUTPUT 92K**

CROSSROAD EKAYLA 91E

WESTGOLD STANDOUT 42Z

D: **RWR CINDER 42F**

TFL CINDER 73A

As a mid-February born calf, we've been impressed with how he's held his own in the group. Loads of hair and pigment, and coloured right, he's another that's right for the times. We have found the CRF Output sons have really upped the ante this year in terms of quality and delivering what today's cattle producers are searching for. They're soft made, moderate in stature, but don't sacrifice on performance and their numbers are a testament to that. This calf's dam is another balanced, feminine cow with a great udder. Non-Diluter.



Dam - RWR 42F



Maternal Sib - RWR 123L



## RWR OUTPUT 162N

CA-1508295 | RWR 162N | 12/2/2025 | Horned

BW 104 | ADJ WW 844 | ACT WW 855 | ADJ YW 1615 | ACT YW 1390

CE	BW	WW	YW	MCE	MWW	Milk	API	TI
2	6.2	78.7	122.8	1	69.1	29.7	104.42	70.1

ANCHOR D OUTLOOK

S: **CROSSROAD OUTPUT 92K**

CROSSROAD EKAYLA 91E

WESTGOLD STANDOUT 42Z

D: **RWR JEWEL 81D**

TFL MS JUSTIFIED 22A

RWR 81D was a highly respected, proven female we had the honour of raising and reaping the rewards of her hard work. She was a powerhouse, capacious female that stamped her calves with her style and doability. The Westgold Standout females have been some of our best producers over the years and their legacy is timeless. This bull is another mid-Feb born, hairy, thick hiped, stout Output son. He's soft in his make and balanced on all fours. His 2 maternal brothers averaged \$25,000, with RWR Cash 30K working in the herds of SAJ Simmentals and Roach Ranching, and all of his maternal sisters are retained in-herd. The guesswork is removed from this guy, with a stacked maternal lineage, and a group of consistent Output sons selling alongside him, he's bred for predictability. Non-Diluter.



Maternal Sib - RWR 30K



Maternal Sib - RWR 158L



## RWR OUTPUT 47N

CA-1506460 | RWR 47N | 8/1/2025 | Horned

BW 88 | ADJ WW 734 | ACT WW 820 | ADJ YW 1425 | ACT YW 1300

CE	BW	WW	YW	MCE	MWW	Milk	API	TI
5.6	3.8	67	98.4	2.5	65.5	32	103.72	65.31

ANCHOR D OUTLOOK

S: **CROSSROAD OUTPUT 92K**

CROSSROAD EKAYLA 91E

SAJ MOGUL 42H

D: **RWR ELECTRA 54K**

RWR ELECTRA 84G

So stylish. We've commented dozens of times on the look of the Output's this year. They really are a sight to see! Very impressed with the job this second-calver has done on her bull calf, but then again, there's a reliability piece at play here as his dam is backed by LWC Miss Rio Grande 20U. He's deep flanked, loose made, and carries that lower quarter down just the way we like to see. Deep red, hairy, and ready to stamp his calves with the Output look! Non-Diluter.



Dam - RWR 54K





Maternal Sib - RWR 128M



## RWR OUTPUT 20N

CA-1505650 | RWR 20N | 3/1/2025 | Horned

BW 87 | ADJ WW 811 | ACT WW 930 | ADJ YW 1488 | ACT YW 1400

CE	BW	WW	YW	MCE	MWW	Milk	API	TI
5.8	3.7	72.2	101.6	2.8	71.3	35.2	106.02	68.73

ANCHOR D OUTLOOK

S: **CROSSROAD OUTPUT 92K**

CROSSROAD EKAYLA 91E

SAJ MOGUL 42H

D: **RWR ROX 89K**

RWR ROX 68E

This is a probably the most showy son out of this sire group. We really wish his photo captured that, but regardless, he's another you might be interested in seeing in person. Stouter made, smooth-shouldered with the type of eye appeal that can be tough to find sometimes in a fullblood pen, he's Mr. Cool showcasing performance and style. His dam, RWR 89K, did a great job on her second calf. She herself, is a stylish SAJ Mogul daughter that we appreciate for her colour, udder structure, and doability. Non-Diluter.



Maternal Sib - RWR 79M



Maternal Sib - RWR 39K



## RWR OUTPUT 118N

CA-1508236 | RWR 118N | 21/1/2025 | Horned

BW 92 | ADJ WW 750 | ACT WW 830 | ADJ YW 1528 | ACT YW 1370

CE	BW	WW	YW	MCE	MWW	Milk	API	TI
7.1	3.9	70.8	112.3	3.4	72	36.6	118.37	70.82

ANCHOR D OUTLOOK

S: **CROSSROAD OUTPUT 92K**

CROSSROAD EKAYLA 91E

WESTGOLD STANDOUT 42Z

D: **RWR ELECTRA 63B**

TFL ELECTRA 9Z

Patterned so similar to Lot 1! Genetically, they're almost twins, being that his momma is none other than RWR 63B. It is a true flex of hers, being able to produce what she has at 12 years old on yet another year of less than ideal pasture conditions! We strive to breed and raise the kind that perform and excel in realistic, real world scenarios and she has done just that, time and time again. Lot 8 is long bodied, wide topped, and cherry red. He's smooth made from his shoulder to hip. A super honest bull that can be used in a multitude of ways. To date, RWR 63B's sons have averaged \$31,300, and have went to highly respected operations such as Crossroad Farms, Bar Crossroads Ranch, Rendezvous Farms, Windmill Stock Farms, and Grassy Flats Ranch. Each 63B daughter has remained in herd. Non-Diluter.



Dam - RWR 38F



Maternal Sib - RWR 25M



## RWR OUTPUT 172N

CA-1508305 | RWR 172N | 20/2/2025 | Horned

BW 85 | ADJ WW 811 | ACT WW 800 | ADJ YW 1416 | ACT YW 1220

CE	BW	WW	YW	MCE	MWW	Milk	API	TI
8.5	2.8	60.7	83.8	3.8	61.9	31.5	106.76	64.32

ANCHOR D OUTLOOK

S: **CROSSROAD OUTPUT 92K**

CROSSROAD EKAYLA 91E

VIRGINIA MACGYVER 9D

D: **RWR FIONA 38F**

TFL FIONA 47A

A potential candidate for the second calvers. This Output son has ample stretch, depth, and a great haircoat. He's blood red, goggled up and smooth through his front third. His dam is an attractive, easy fleshing, tidy uddered cow. Last year's calf sold to Royle Bristow. Non-Diluter.



10

**RWR OUTPUT 50N**

CA-1506462 | RWR 50N | 9/1/2025 | Horned

BW 83 | ADJ WW 761 | ACT WW 875 | ADJ YW 1388 | ACT YW 1310

CE	BW	WW	YW	MCE	MWW	Milk	API	TI
8.2	3.1	67.3	93.8	3.9	65.9	32.3	107.77	67.66

ANCHOR D OUTLOOK

S: **CROSSROAD OUTPUT 92K**

CROSSROAD EKAYLA 91E

VIRGINIA MACGYVER 9D

D: **RWR FIONA 47J**

RWR FIONA 25C

Wide topped and as dark of red as you can make them! RWR 50N has the Output look, typical haircoat and style. He's soft in his make, deep ribbed with tons of length. Born as the second calf to a female that's setting up to have a bright future in production, we are sure impressed by what she did. She's a great looking cow with good udder suspension and teat placement. We bred Output to some of our leading females and the results have exceeded our expectations. Non-Diluter.



Dam - RWR 47J

11

**RWR OUTPUT 117N**

CA-1508235 | RWR 117N | 21/1/2025 | Horned

BW 94 | ADJ WW 816 | ACT WW 910 | ADJ YW 1493 | ACT YW 1380

CE	BW	WW	YW	MCE	MWW	Milk	API	TI
6.1	3.6	67.8	96.8	1.7	64.6	30.7	103.48	65.27

ANCHOR D OUTLOOK

S: **CROSSROAD OUTPUT 92K**

CROSSROAD EKAYLA 91E

VIRGINIA PRECISION 16C

D: **ANCHOR D ELICIA 562E**

ANCHOR D JASMINE 53X

A rugged beast mothered by a moderately framed, hardworking momma cow we purchased from the Anchor D herd. This bull is patterned just like his sire. Balanced on all fours, deep chested, wide across that loin, he's got the attributes required to sire those pens of feeder steers that will surely yield. A good candidate to provide that hybrid advantage to the British breed pens. Non-Diluter.



Dam - ZDS 562E



Maternal Sib - RWR 145M

12

**RWR OUTPUT 28N**

CA-1505660 | RWR 28N | 5/1/2025 | Horned

BW 89 | ADJ WW 787 | ACT WW 920 | ADJ YW 1478 | ACT YW 1400

CE	BW	WW	YW	MCE	MWW	Milk	API	TI
5.4	4.4	73.9	103.5	2.4	72.2	35.2	107.5	69.78

ANCHOR D OUTLOOK

S: **CROSSROAD OUTPUT 92K**

CROSSROAD EKAYLA 91E

SOUTHSEVEN EGO 13F

D: **RWR ELECTRA 36J**

RWR ELECTRA 84G

Finalizing the Output offering with a long spined, growthy second calver candidate. RWR 28N is deep red, with a heavy haircoat. He doesn't give up depth just because he's got that extra stretch. His dam is a beauty female with loads of colour, double goggles, and a tidy udder with great teat spacing. He's got his working clothes on and will surely sire a group of those heavyweight steers! A maternal brother sold to Chase Bannerman. Non-Diluter.



Dam - RWR 36J





13

## RWR MOGUL 105N

CA-1508216 | RWR 105N | 20/1/2025 | Horned

BW 90 | ADJ WW 838 | ACT WW 940 | ADJ YW 1558 | ACT YW 1440

CE	BW	WW	YW	MCE	MWW	Milk	API	TI
6.8	3.6	79.3	114	3.3	74.3	34.6	108.87	71.31

SAJ MOGUL 29F

S: **SAJ MOGUL 42H**

BLUSHROSE MS IMPORT 15X

KUZ MR MOLSON 393D

D: **RWR SAGE 44F**

RWR MS SALTON 10D

Starting off the Mogul sons with this super complete herd sire prospect. From his length to his depth of rib, thickness and capacity, he's the total package. RWR 105N is typical of the Mogul sons with his cherry red colour, ideal pigmentation, and thick haircoat. He's impressive when you step in behind him, soft in his make and structurally sound. His dam is a dark red, pigmented up, easy doing cow with a great udder. The Mogul sons have been well received by our customers and this year's offering is probably the most consistent yet.



14

## RWR MOGUL 106N

CA-1508218 | RWR 106N | 20/1/2025 | Horned

BW 94 | ADJ WW 830 | ACT WW 930 | ADJ YW 1478 | ACT YW 1380

CE	BW	WW	YW	MCE	MWW	Milk	API	TI
6.1	3.7	71.3	100.3	3.9	69.8	34.1	105.27	65.65

SAJ MOGUL 29F

S: **SAJ MOGUL 42H**

BLUSHROSE MS IMPORT 15X

KUZ MR MOLSON 393D

D: **RWR LAURIE 58G**

IPU MS. LAREDO 213W

RWR 106N compliments 105N so well, it was a no-brainer to have him follow in the catalogue. They're like two peas in a pod, showcasing the consistency Mogul continues to stamp his progeny with. This bold look is signature to this sire group, where style and functionality intertwine almost perfectly together. If you're looking to put together a package of replacement females, these guys should be high on your list! His dam, RWR 58G, is a hard working, moderate cow with a neat udder and great teat placement. A full brother sold to the great folks at Rose Creek Ranch last year. Non-Diluter.



Dam - RWR 58G



Maternal Sib - RWR 143L



15

## RWR MOGUL 171N

CA-1508304 | RWR 171N | 20/2/2025 | Horned

BW 102 | ADJ WW 850 | ACT WW 840 | ADJ YW 1455 | ACT YW 1260

CE	BW	WW	YW	MCE	MWW	Milk	API	TI
3	4.9	67.9	95.8	1.6	62.8	28.8	93.49	61.11

SAJ MOGUL 29F

S: **SAJ MOGUL 42H**

BLUSHROSE MS IMPORT 15X

JNR'S SALTON

D: **RWR JEWEL 55F**

RWR JEWEL 81D

The second youngest bull on offer and he's no late bloomer! He's a masterpiece with eye appeal you can't deny. Blood red to the ground, double goggled, lip rings, he's the dream if you utilize fullblood genetics in your program. If you don't, maybe he's your sign to start! Super complete and correct, he's hard to fault. With a YWPDA of 4.03, he's style and performance in one fancy package. His dam is a heavily pigmented female that produces well each year. We'd love to see a pen of his replacement females - they will no doubt be some of the most attractive ones around. Non-Diluter.



16

**RWR MOGUL 30N**

CA-1505661 | RWR 30N | 5/1/2025 | Horned

BW 90 | ADJ WW 830 | ACT WW 985 | ADJ YW 1536 | ACT YW 1475

CE	BW	WW	YW	MCE	MWW	Milk	API	TI
7	3.4	75.7	108.2	3.7	73.2	35.3	109.82	69.8

SAJ MOGUL 29F

S: **SAJ MOGUL 42H**  
BLUSHROSE MS IMPORT 15X

SOUTHSEVEN EGO 13F

D: **RWR LADY 13H**  
RWR ELECTRA 118F

Everything about his look to his performance just confirms what I mentioned earlier about the Moguls tying style and functionality into one. A WW just shy of 1000lbs and a yearling weight of 1475 in a moderately built frame just showcases the job he does in efficient feed conversion. There's next to no waste on this guy. He's well muscled, clean fronted and packs a ton of punch. The industry pays on pounds and the Mogul sons are excellent candidates to help you maximize your profit potential. 30N's dam was a beast of a cow with awesome feet, deep red in colour and we have a full sister to Lot 16 calving this year that looks great. I'm not sure what else can be said about this calf. We invite you to analyze him and his penmates, they will speak for themselves. Non-Diluter.



Dam - RWR 13H

17

**RWR MOGUL 92N**

CA-1508196 | RWR 92N | 17/1/2025 | Horned

BW 93 | ADJ WW 800 | ACT WW 900 | ADJ YW 1390 | ACT YW 1310

CE	BW	WW	YW	MCE	MWW	Milk	API	TI
4.3	4.5	68.5	89.2	1.7	68.3	34	90.83	61.09

SAJ MOGUL 29F

S: **SAJ MOGUL 42H**  
BLUSHROSE MS IMPORT 15X

CROSSROAD RADIUM 789U

D: **RWR DAZZLE 43B**  
TFL FLASHY 6Z

Length, hair, style, a great lower quarter - I feel like a broken record when writing about these Mogul sons, but it's a good problem to have! Born to who is probably my favourite full-blood cow on the place, RWR 43B, he's got maternal longevity programmed in and will surely pass that on to his females. RWR 43B can always be trusted to raise a good one and her sons have been chosen by some great programs like Spring Creek Colony and Paul Murray Farms. If you're looking for reliability and predictability, then this mating should fit the bill. Non-Diluter.



Dam - RWR 43B



Maternal Sib - RWR 108M

18

**RWR MOGUL 44N**

CA-1506457 | RWR 44N | 8/1/2025 | Horned

BW 93 | ADJ WW 794 | ACT WW 930 | ADJ YW 1528 | ACT YW 1440

CE	BW	WW	YW	MCE	MWW	Milk	API	TI
5	4.1	73.9	108.5	3.8	67.1	30.1	101.78	65.92

SAJ MOGUL 29F

S: **SAJ MOGUL 42H**  
BLUSHROSE MS IMPORT 15X

RWR STEIGER 2D

D: **RWR LADY 8H**  
CHERRY CREEK STEFFI 10T

44N is another heavyweight Mogul son. We wished his photo would have better showcased what he has to offer but he was so unbothered with us trying to get him to set up correctly, which I suppose is a good thing. Easy to handle, thick topped and tons of pigment, he's another dream of a fullblood with traits like his. His dam is a sweet-natured, moderate in frame, hard working female that's sound in her make and dependable with her production. Diluter.



Dam - RWR 8H





19

## RWR MOGUL 55N

CA-1506466 | RWR 55N | 10/1/2025 | Horned

BW 91 | ADJ WW 778 | ACT WW 905 | ADJ YW 1506 | ACT YW 1410

CE	BW	WW	YW	MCE	MWW	Milk	API	TI
3.9	4.5	73.5	105	2.1	70.6	33.8	100.55	66.44

SAJ MOGUL 29F  
S: **SAJ MOGUL 42H**  
BLUSHROSE MS IMPORT 15X

KUZ MR MOLSON 393D  
D: **RWR DAZZLE 35F**  
CROSSROAD X-DAZZLE 199X

Even tempered and easy to handle, RWR 55N is blood red right to the hoof. He brings style, colour, hair, and growth to the table. A pen of replacement females off this guy should be a real sight with pigment like his. His dam has only ever produced females, that we've kept in herd, so we are happy with the first ever bull calf she raised. Another no-miss, versatile Mogul son that should be a great asset to any bull battery. Non-Diluter.



20

## RWR MOGUL 161N

CA-G1508294 | RWR 161N | 12/2/2025 | Horned

BW 96 | ADJ WW 803 | ACT WW 820 | ADJ YW 1517 | ACT YW 1315

CE	BW	WW	YW	MCE	MWW	Milk	API	TI
5.6	4.1	69.8	104	3.1	65.6	30.7	99.71	64.17

SAJ MOGUL 29F  
S: **SAJ MOGUL 42H**  
BLUSHROSE MS IMPORT 15X

RWR OUTSTAND 16B  
D: **RWR BUSTER 92F**  
TFL INFALLIBLE 10Z

This bull is extreme with loads of capacity. Everything about him cannot go unnoticed, from his thick, heavy hair, to length, depth of body, and overall mass. You'd never know he's a mid-Feb born calf. He has a softness to his build that is tough to follow. Deep flanked, great lower quarter and loose through the girth, he's got the makings of a tremendous breeder to sire those keeper females and impressive steers that are highly sought after by today's buyers. This bull is athletic in his movements and strides out on a correct set of feet and legs. His dam is deep in colour, moderate and easy keeping. If you're looking for that hybrid advantage, or a little bit of added chrome, this is one worth serious consideration. Non-Diluter.



21

## RWR POL HIGHT PERFECT 54N

CA-P1506465 | RWR 54N | 10/1/2025 | Polled

BW 94 | ADJ WW 811 | ACT WW 905 | ADJ YW 1625 | ACT YW 1470

CE	BW	WW	YW	MCE	MWW	Milk	API	TI
3.6	4.3	78.2	120.8	1.4	71.1	32	104.24	71.16

DOUBLE BAR D POL MANCHESTER  
S: **ROD HIGHT PERFECT 60H**  
SIBELLE POL RUMY 9E

WESTGOLD STANDOUT 42Z  
D: **STBS TISSAIA 67K**  
STBS SIRI 47F

Our polled fullblood offering starts with this second natural-born calf of STBS 67K, who we purchased from the program of Stout Brothers Simmentals. As a hetero-polled fullblood, his performance numbers came to us completely unexpected. Sired by a polled bull we really appreciated for his colour and muscle mass, ROD Hight Perfect 60H and the mating with this remarkable Westgold Standout daughter has not disappointed. RWR 54N boasts tons of hair, capacity, and muscling that rivals many of our horned fullbloods. He's nice headed, coloured great, and a true standout in our minds when it comes to polled bulls. We cannot overlook his shape and dimension. Mothered by the model cow that commanded \$30,000, we are confident in the females he will produce. STBS Tissaia 67K's first calf, a heifer, sold to Jason Heideman at the World Simmental Sale in 2024 for \$15,000. Hetero polled, non-diluter.



Sire - ROD Hight Perfect 60H



Dam - STBS 67K



Maternal Sib - RWR 53M



22

**RWR POL HIGHT PERFECT 145N ET**

CA-PT1508263 | RWR 145N | 30/1/2025 | Polled

BW 104 | ADJ WW 934 | ACT WW 1000 | ADJ YW 1712 | ACT YW 1540

CE	BW	WW	YW	MCE	MWW	Milk	API	TI
7.4	3.7	73.3	109.9	3	72.3	35.6	106.24	66.14

DOUBLE BAR D POL MANCHESTER

WESTGOLD STANDOUT 42Z

S: **ROD HIGHT PERFECT 60H** D: **RWR ELECTRA 63B**

SIBELLE POL RUMY 9E

TFL ELECTRA 9Z

Another ROD Hight Perfect 60H son, but this time coming at you as an embryo transfer from our one and only RWR 63B. This end of January calf is a beast. He boasts tremendous length, depth, and thickness. As a polled bull, we find him to be an original in terms of his style and performance. His numbers are off the charts, with a YWPDA of 4.61 - which I believe is the highest out of the entire bull offering. He's a meat machine, extremely well muscled and is coloured just the way we hope for. This bull has been impressive all year long, with his deep flank, lower quarter and ample hip. He's thick over his loin and ties all this power together smoothly. We are super happy with what we've seen the ROD 60H bull produce and know his progeny will go out and leave their mark just like he has here for us with Lots 21 & 22. Hetero polled, non-diluter.



Sire - ROD Hight Perfect 60H



Maternal Sib - RWR 79M



Maternal Sib - RWR 39K

23

**RWR POL KINSMAN 140N ET**

CA-PT1508260 | RWR 140N | 29/1/2025 | Polled

BW 91 | ADJ WW 938 | ACT WW 980 | ADJ YW 1666 | ACT YW 1485

CE	BW	WW	YW	MCE	MWW	Milk	API	TI
4.3	3.9	81.9	127.3	1.7	73.1	32.1	109.42	73.99

RUGGED R BORDEAUX 0029H

WESTGOLD STANDOUT 42Z

S: **MASTERLOC PFF KINSMAN 2K** D: **STBS TISSAIA 67K**

FSMB FLASH 13F

STBS SIRI 47F

An embryo transfer from STBS Tissaia 67K, we are impressed by the punch this calf packs. Excellent numbers with a WWPDA of 4.38 and a YWPDA of 4.43, he's another one that's held his own. He's got the depth, width, colour, and volume needed for those highly sought after females, and the performance required when raising payweight males. A very complete bull mothered by a top notch cow, mark him as a must-see! Hetero polled, non-diluter.



Dam - STBS 67K



Sire - MAST Kinsman 2K

24

**RWR POL KINSMAN 26N**

CA-PG1505658 | RWR 26N | 5/1/2025 | Polled

BW 78 | ADJ WW 859 | ACT WW 940 | ADJ YW 1601 | ACT YW 1455

CE	BW	WW	YW	MCE	MWW	Milk	API	TI
7.6	4.2	91.6	135.2	3.4	82.4	36.6	110.57	77.89

RUGGED R BORDEAUX 0029H

SAJ BOONE 84J

S: **MASTERLOC PFF KINSMAN 2K** D: **RWR HAZEL 6L**

FSMB FLASH 13F

RWR HAZEL 43J

Another blood red polled bull out of MAST Kinsman 2K. This bull showcases a neat profile, resembling his sire in his confirmation and colour. We want to make special note of his BW as it's a very modest 78lbs, and also mention his weaning weight of 940lbs. Look at him as a potential calving ease prospect. Another polled bull battery candidate with the numbers to back him. We feel he's a versatile bull that can be utilized in a variety of ways. Born to a first calving SAJ Boone daughter with ample capacity and a tidy udder with great teat placement and spacing. Hetero polled, non-diluter.



Dam - RWR 6L



Sire - MAST Kinsman 2K





Dam - RWR 132L

25

## RWR BOONE 11N

CA-1505639 | RWR 11N | 1/1/2025 | Horned

BW 86 | ADJ WW 812 | ACT WW 895 | ADJ YW 1454 | ACT YW 1340

CE	BW	WW	YW	MCE	MWW	Milk	API	TI
6	4	75.9	106.8	4.3	73.2	35.2	99.14	67.7

HPR WILLIAM 117G

S: **SAJ BOONE 84J**

SAJ ALEXANDRA 60E

SAJ MOGUL 42H

D: **RWR MOGUL 132L**

RWR LADY 8H

SAJ Boone 84J was a reliable heifer bull for us. His last calf crop on offer for 2026 is typical of his sons. They're born easily, coloured great, and super hairy. It's not too often you can find a heifer bull that has as many progeny hitting the sale as Boone did, and we were sure thankful for it. RWR 11N is a deep bodied, soft made bull born to a first-calver at 86lbs. He's attractive with his deep red haircoat and is great on the move. His dam is a sweet, cherry red female that has a bright future here. This calf has a bit more jam to him, so would recommend him for second calvers. Non-Diluter.



Maternal Sib - RWR 42F

Maternal Sib - RWR 70E

26

## RWR BOONE 73N

CA-1506785 | RWR 73N | 14/1/2025 | Horned

BW 84 | ADJ WW 767 | ACT WW 800 | ADJ YW 1559 | ACT YW 1350

CE	BW	WW	YW	MCE	MWW	Milk	API	TI
7.8	4.1	78	117.9	5.1	75.5	36.5	101.79	68.7

HPR WILLIAM 117G

S: **SAJ BOONE 84J**

SAJ ALEXANDRA 60E

KHG STERLING 16H

D: **RWR CINDER 32L**

TFL CINDER 73A

Patterned almost identically to Lot 26, this calf is another true reflection of the Boone group. He's coloured great, comes with tons of hair, and is structurally correct. His dam had a tidy udder and was a good little cow. Non-Diluter.



Granddam - RWR 37B

27

## RWR BOONE 102N

CA-1508210 | RWR 102N | 19/1/2025 | Horned

BW 78 | ADJ WW 835 | ACT WW 865 | ADJ YW 1419 | ACT YW 1270

CE	BW	WW	YW	MCE	MWW	Milk	API	TI
9.9	2.4	72.3	100.2	5.2	73.7	37.5	105.17	68.25

HPR WILLIAM 117G

S: **SAJ BOONE 84J**

SAJ ALEXANDRA 60E

SAJ MOGUL 42H

D: **RWR ELECTRA 57L**

RWR ELECTRA 37B

Another SAJ Boone son that moves with ease. He's docile in nature and like his sire group, easy to work with. Length of spine, excellent colour, a 78lb BW, he's a great option if you're looking for a heifer pen candidate. His dam goes back to LWC 20U, a cow that certainly was appreciated industry wide. Non-Diluter.



28

**RWR BOONE 22N**

CA-1505653 | RWR 22N | 3/1/2025 | Horned

BW 74 | ADJ WW 761 | ACT WW 830 | ADJ YW 1510 | ACT YW 1350

CE	BW	WW	YW	MCE	MWW	Milk	API	TI
10.4	2.2	74	109.7	5.9	73.4	36.4	110.01	70.6

HPR WILLIAM 117G

S: **SAJ BOONE 84J**

SAJ ALEXANDRA 60E

SAJ MOGUL 42H

D: **RWR LADY 35L**

RWR LADY 130H

A heifer pen option with his 74lb BW and super length. He's smooth made and even tempered, with awesome performance. Great colour and patterned just like his sire. Backed by some great producing genetics on the bottom side. Non-Diluter.



Granddam - RWR 130H

29

**RWR BOONE 99N**

CA-1506453 | RWR 99N | 8/1/2025 | Horned

BW 78 | ADJ WW 783 | ACT WW 840 | ADJ YW 1330 | ACT YW 1220

CE	BW	WW	YW	MCE	MWW	Milk	API	TI
9.6	2.8	79.2	115	5.1	75.1	35.5	111.8	73.61

HPR WILLIAM 117G

S: **SAJ BOONE 84J**

SAJ ALEXANDRA 60E

RWR WILDCARD 67E

D: **RWR FIONA 38L**

RWR FIONA 25C

The final Boone on offer to wrap up this sire group, and the fullblood heifer pen candidate division. A 78lb BW, great on the move in terms of structure and foot size, he's an honest bull born to a female that will surely have an impressive future here, being the result of a mating between RWR 25C and RWR Wildcard 67E. RWR 25C is featured on our Foundational Females page and was a pear-shaped cow in a moderate frame that packs a performance punch. RWR 67E was a feature in our sale a few years ago now, and he was a super loose-hided, easy doing bull with incredible volume and mass. Non-Diluter.



Granddam - RWR 25C

**January Simmental EPD Breed Averages**

CE	BW	WW	YW	MCE	MWW	Milk	API	TI
7.2	3.4	79.2	115.3	4.0	65.76	26.1	110.9	72.5

Top RWR Calving Ease Fullbloods	Lot	Name	EPD
	28	RWR Boone 22N	10.4
	27	RWR Boone 102N	9.9
	29	RWR Boone 99N	9.6
	9	RWR Output 172N	8.5
	2	RWR Output 59N	8.3
	10	RWR Output 50N	8.2
Calving ease EPD's are listed as a reference point only and are not to be taken as final. We encourage you to speak with us on our calving ease prospects prior to purchasing.			

Top RWR YWPD Fullbloods	Lot	Name	YWPD
	22	RWR POL Hight Perfect 145N ET	4.61
	23	RWR POL Kinsman 140N ET	4.43
	3	RWR/NCE Output 155N	4.33
	5	RWR Output 162N	4.33
	1	RWR Sabre 33N	4.30
	13	RWR Mogul 105N	4.19
	21	RWR POL Hight Perfect 54N	4.15
	16	RWR Mogul 30N	4.11
	20	RWR Mogul 161N	4.10

Top RWR ADJ Weaning Weight Fullbloods	Lot	Name	ADJ WW
	23	RWR POL Kinsman 140N ET	938
	22	RWR POL Hight Perfect 145N ET	934
	1	RWR Sabre 33N	862
	24	RWR POL Kinsman 26N	859
	15	RWR Mogul 171N	850
	5	RWR Output 162N	844
	13	RWR Mogul 105N	838
	3	RWR/NCE Output 155N	836
	27	RWR Boone 102N	835

Top RWR ADJ Yearling Weight Fullbloods	Lot	Name	ADJ YW
	22	RWR POL Hight Perfect 145N ET	1712
	23	RWR POL Kinsman 140N ET	1666
	1	RWR Sabre 33N	1633
	21	RWR POL Hight Perfect 54N	1625
	3	RWR/NCE Output 155N	1622
	5	RWR Output 162N	1615
	24	RWR POL Kinsman 26N	1601
	26	RWR Boone 73N	1559
	13	RWR Mogul 105N	1558





Dam - RWR 326



Maternal Sib - RWR 101J

30

## RWR RED REDEMPTION 62N

CA-PG1506778 | RWR 62N | 11/1/2025 | Homo Polled

BW 84 | ADJ WW 873 | ACT WW 1015 | ADJ YW 1615 | ACT YW 1530

CE	BW	WW	YW	MCE	MWW	Milk	API	TI
8.9	3.3	90	136.1	3.5	70.2	25.2	114.71	77.37

WFL MOUNTAIN VIEW 4J

IPU 56U RED LINER 215A

S: **BLACK GOLD GLACIER 192L**

D: **RWR ARDELLA 32G**

RF CERTAINLY FLIRTIN 532C

RWR MS FIREBALL 77E

The BGS Glacier 192L progeny have been top tier. This bull that kicks off our red division is nothing short of a masterpiece. He's homo polled, soft made, with tons of middle and width of top. We've joked all fall that he should have been a show bull, and not just because he'd be a clear contender in the show ring, but because his personality and temperament has been a dream to work with. He's so balanced and complete, he's a must-see in person. He moves on a big, square hoof and is structurally correct on all fours. He's fancy looking, clean fronted, and deep flanked. He's tough to fault and is definitely our kind! Raised by an attractive, tidy uddered momma cow that goes back to IPU Red Liner 215A, this is a fully stacked pedigree in a stylish, powerhouse package. Add him to your bull battery! Homo polled.



Maternal Sib - RWR 50L

31

## RWR RED BUD 91N

CA-PG1508194 | RWR 91N | 17/1/2025 | Hetero Polled

BW 98 | ADJ WW 848 | ACT WW 955 | ADJ YW 1619 | ACT YW 1490

CE	BW	WW	YW	MCE	MWW	Milk	API	TI
4.7	5	89.7	138.3	1.8	65.6	20.7	106.69	74.99

WFL MOUNTAIN VIEW 4J

WESTGOLD STANDOUT 42Z

S: **BLACK GOLD GLACIER 192L**

D: **RWR TRIxie 84C**

RF CERTAINLY FLIRTIN 532C

TFL TRIxie 21Z

An absolute tank that demands your attention. This sire group is incredibly strong across the board on both the female side and the bull side of the spectrum. 192L has done an excellent job moderating frame here without sacrificing performance and this calf is a tremendous testament to the job he's done here so far. Another super fancy, blood red herd sire prospect that you don't want to miss. He's got explosive growth, mass, and muscling. A complete show stopper, if he were to enter the ring, and we invite you to come analyze him and his brothers. Red Bud offers tons of hair, sound structure, and style to burn. Sign me up to see a pen full of his females, because they will truly be a sight to see. Raised by a powerhouse Westgold Standout daughter, it's evident where his capacity partly comes from. He has a maternal brother working in the herd of Wheatland Farming Co. Ltd. Hetero polled.



Dam - RWR 11F

32

## RWR GLACIER 148N

CA-PG1508265 | RWR 148N | 1/2/2025 | Homo Polled

BW 100 | ADJ WW 934 | ACT WW 1000 | ADJ YW 1619 | ACT YW 1475

CE	BW	WW	YW	MCE	MWW	Milk	API	TI
5.5	4.2	87.2	124.5	2.7	65.2	21.6	106.2	72.19

WFL MOUNTAIN VIEW 4J

MUIRHEADS IDENTITY 229Z

S: **BLACK GOLD GLACIER 192L**

D: **RWR BUBBLY 11F**

RF CERTAINLY FLIRTIN 532C

RWR BUBBLY 24D

It's like we took lot 30 and hit copy and paste! Another fancy bull we appreciate for his deep shade of red, loads of hair, excellent hip, quarter, big footed and performance packed. This sire group doesn't just look good, they come equipped with the growth and power that we feel can be challenging to find in the red Simmentals. They're so consistent in their confirmation that the presentation of these bulls is something you need to see to believe. His dam is a powerful female that was known to put her all into her calves. Just check out that 1000lb WW! Past sons of hers have went to the well-respected herds of Daryl & Marcella Paulgaard and Christensen Land & Cattle. Homo polled.



33

**RWR GLACIER 80N**

CA-PRS1534461 | RWR 80N | 15/1/2025 | Homo Polled

BW 85 | ADJ WW 696 | ACT WW 795 | ADJ YW 1402 | ACT YW 1285

CE	BW	WW	YW	MCE	MWW	Milk	API	TI
8.7	2.3	78.6	115.8	4.9	65	25.7	124.04	77.92

WFL MOUNTAIN VIEW 4J

S: **BLACK GOLD GLACIER 192L** D: **SIMMENTAL/SIMMENTAL**  
RF CERTAINLY FLIRTIN 532C

It's great to see the consistency within this sire group. This bull is super stylish, deep in colour with tons of hair. The 192L sons are loose-hided, soft made in the girth and easy doing. They have excellent tops, width across the loin and are neat through that front third. The Glacier 192L females are at the top of the pen in our replacements and his sons will surely do the same for you. Mothered by a hairy, pear-shaped hard working red cow that goes back to Heritage, this is a purebred bull, but unpapered. Calling all commercial cattlemen to get your hands on a purebred-caliber, homo polled bull!



Granddam - DKC 48Y

34

**RWR GLACIER 36N**

CA-PG1505667 | RWR 36N | 7/1/2025 | Homo Polled

BW 81 | ADJ WW 809 | ACT WW 915 | ADJ YW 1523 | ACT YW 1410

CE	BW	WW	YW	MCE	MWW	Milk	API	TI
9.9	2.5	83.4	121.6	5.5	64	22.3	106.34	72.69

WFL MOUNTAIN VIEW 4J

S: **BLACK GOLD GLACIER 192L** D: **RWR YURA QUEEN 58K**  
RF CERTAINLY FLIRTIN 532C

CINDERELLA MAN

RWR YURA QUEEN 58D

Raised by a daughter of one of our favourite red cows on the place, this bull has been neat to watch all year. This is the second calf RWR 58K raised and she's done an excellent job on him. RWR 58K has an ideal udder, and she herself is a great looking female angular in shape with a ton of style. Her first calf sold to Strate Lake Side Farm Ltd. The females off this bull should be nothing short of impressive. A carbon copy of the Glacier sons, he's another bold in his make bull that should garner some attention on sale day. 81lb BW, 915lb WW and homo polled.



Dam - RWR 58K

35

**RWR GLACIER 108N**

CA-PG1521500 | RWR 108N | 20/1/2025 | Hetero Polled

BW 85 | ADJ WW 783 | ACT WW 865 | ADJ YW 1410 | ACT YW 1300

CE	BW	WW	YW	MCE	MWW	Milk	API	TI
9	2.6	75.4	108.1	3.7	55.6	17.9	108.97	69.43

WFL MOUNTAIN VIEW 4J

S: **BLACK GOLD GLACIER 192L** D: **RWR URIAH 57J**  
RF CERTAINLY FLIRTIN 532C

MCINTOSH HERITAGE 19G

RWR URIAH 81C

A clean-fronted, more refined Glacier son we quite like. He's mothered by a young, dark red, powerful Heritage 19G daughter. If you're in the market of raising those high dollar replacements, put this guy on your radar. Cinnamon red, loads of hair, tons of eye appeal and a modest 85lb BW. Hetero polled.



Dam - RWR 57J





Dam - RWR 155K



Maternal Sib - RWR 75M

36

## RWR GLACIER 121N

CA-PG1508242 | RWR 121N | 22/1/2025 | Hetero Polled

BW 89 | ADJ WW 833 | ACT WW 890 | ADJ YW 1446 | ACT YW 1315

CE	BW	WW	YW	MCE	MWW	Milk	API	TI
6.8	4	77.9	106.1	2	64	25	101.35	67.47

WFL MOUNTAIN VIEW 4J

RWR FIREBALL 35B

S: **BLACK GOLD GLACIER 192L** D: **RWR TAMARA 155K**

RF CERTAINLY FLIRTIN 532C

RWR TAMARA 86F

Lot 36 comes at us with that extra bit of stretch that equals payweight in progeny. He's another stylish, haired up Glacier son we think highly of. His dam is a great looking blaze faced second calver that did awesome on her second go. Her first calf sold to the highly-respected herds of Black Gold Simmentals and W2 Land & Cattle for \$20,000 last year. Hetero polled and a great candidate for those second calvers. If you're after added length, hair, and strong maternal traits, mark him down!



Dam - RWR 61K

37

## RWR GLACIER 129N

CA-PG1508251 | RWR 129N | 24/1/2025 | Hetero Polled

BW 80 | ADJ WW 726 | ACT WW 765 | ADJ YW 1368 | ACT YW 1210

CE	BW	WW	YW	MCE	MWW	Milk	API	TI
10.2	2.2	71.5	103.8	4.5	50.3	14.5	111.98	68.28

WFL MOUNTAIN VIEW 4J

MCINTOSH HERITAGE 19G

S: **BLACK GOLD GLACIER 192L** D: **RWR TRIxie 61K**

RF CERTAINLY FLIRTIN 532C

RWR TRIxie 84C

Comparable in colour and pattern to our Lot 31, we love to see the reds this red. This bull is super neat to analyze, with his clean front end that blends well into his deep middle and ample lower third, he's a calving ease candidate. Small headed, 80lb BW, his dam did a bang up job on her second kick at the can. Raised by another highly maternal Heritage 19G daughter, who is a direct daughter of RWR Trixie 84C, the dam of Lot 31. Parentage guesswork is removed with both Lots 31 and 37. Hetero polled.



Dam - RWR 122F

38

## RWR GLACIER 111N

CA-PG1508224 | RWR 111N | 20/1/2025 | Hetero Polled

BW 88 | ADJ WW 750 | ACT WW 840 | ADJ YW 1412 | ACT YW 1300

CE	BW	WW	YW	MCE	MWW	Milk	API	TI
9.6	2.7	72.1	103.5	5	52.8	16.7	106.33	66.11

WFL MOUNTAIN VIEW 4J

RWR OUTSTAND 16B

S: **BLACK GOLD GLACIER 192L** D: **RWR YEFFANIE 122F**

RF CERTAINLY FLIRTIN 532C

CROSSROAD YEFFANIE 545Y

Rounding out the Glacier 192L sire group with this lengthy, hairy, refined number. His dam is a super dark in colour, blaze faced, big bodied cow that packs some power behind her. Before this sire group wraps up, we must draw attention to their moderate birthweights, most of them being under 90lbs. This calf doesn't give up depth of middle even though he comes with that extra length and carries his lower quarter down perfectly. Last chance at a BGS 192L son, don't miss out! Hetero polled.



39

**RWR RED BEAR 65N**

CA-PG1506780 | RWR 65N | 13/1/2025 | Hetero Polled

BW 80 | ADJ WW 787 | ACT WW 900 | ADJ YW 1478 | ACT YW 1380

CE	BW	WW	YW	MCE	MWW	Milk	API	TI
9.7	2.3	78.5	114.9	4	66.3	27	103.81	70.52

MRL CAPONE 130B

S: **MRL SYSCO 14D**

MRL MISS 76U

WESTGOLD STANDOUT 42Z

D: **RWR YURA QUEEN 58D**

IPU MS. YURA QUEEN 74A

A couple great calves off MRL Sysco 14D. This blood red bull calf is a showstopper in his looks with his thick, luscious haircoat and deep middle. Great hip and loin on this guy. He's smooth on the move and sound. Red Bear carries himself with such a presence he's hard to ignore. Small headed, ample extension into that front third, he has the makings for some pretty fancy females if you ask us! Calving ease prospect in this eye-appealing package backed by a strong maternal side with IPU Yura Queen 74A on the bottom side, and paternal longevity bred in with Westgold Standout on the top side. His dam, RWR 58D, is a super feminine cow with loads of capacity. She is quite easily one of the most eye-appealing females to roam our pastures. She is also the mother to RWR 58K, the dam of Lot 34. This guy is as cool as they come and although incredibly fancy, he's got his working clothes on. Hetero polled.



Dam - RWR 58D

40

**RWR SYSCO 7N**

CA-PG1505636 | RWR 7N | 1/1/2025 | Homo Polled

BW 98 | ADJ WW 875 | ACT WW 1045 | ADJ YW 1632 | ACT YW 1570

CE	BW	WW	YW	MCE	MWW	Milk	API	TI
4	5	92.1	140.2	1	73.3	27.2	99.82	76.3

MRL CAPONE 130B

S: **MRL SYSCO 14D**

MRL MISS 76U

WESTGOLD STANDOUT 42Z

D: **RWR TRIXIE 94C**

CROSSROAD TRIXIE 183T

Speaking of working clothes, this bull's got em and you can tell. Width over his top, incredible length of spine and ample testicular development, he's positioned to be one heck of a herdbull. Blood red and super masculine in his make, he's a whopper with a WW of over 1000lbs. Raised by a tanky, capacious female with a ton of jam, he's going to throw some punch into his progeny. A maternal brother sold to Wills Land & Cattle last year. Homo polled and the last Sysco son we have on offer.



Dam - RWR 94C



Maternal Sib - RWR 153M

41

**RWR ENTERPRISE 151N**

CA-PG1508268 | RWR 151N | 4/2/2025 | Hetero Polled

BW 102 | ADJ WW 928 | ACT WW 975 | ADJ YW 1662 | ACT YW 1485

CE	BW	WW	YW	MCE	MWW	Milk	API	TI
1	6.1	92.7	142.5	0.7	72.3	25.9	98.6	74.32

SKORS CHALLENGER 31E

S: **BLL ENTERPRISE 153J**

BEE LUSTER 553C

RWR OUTSTAND 16B

D: **RWR LILY 8D**

LWC MISS RIO GRANDE 252W

The BLL Enterprise 153J bull was known for throwing tremendous performance into his progeny and this is a great example of the kind he produced. Lot 41 is a sharp looking, moderate in frame cinnamon red bull with a whopper of a YW at 1485lbs. These sons are square hipped, even tempered, and truly the epitome of Simmental power. If you're in need of a boost in your WW's and YW's, look at the Enterprise group. Raised by an exceptional, high producing Outstand 16B daughter that's tough to fault at her age of 10 years, this calf is backed by integrity. Hetero polled.







Dam - RWR 59H



Maternal Sib - RWR 97L

42

## RWR ENTERPRISE 146N

CA-PG1508264 | RWR 146N | 30/1/2025 | Homo Polled

BW 103 | ADJ WW 864 | ACT WW 930 | ADJ YW 1578 | ACT YW 1425

CE	BW	WW	YW	MCE	MWW	Milk	API	TI
1.4	5.6	87.4	133.3	1.1	72.5	28.8	100.11	71.91

SKORS CHALLENGER 31E

S: **BLL ENTERPRISE 153J**

BEE LUSTER 553C

RWR OUTSTAND 16B

D: **RWR LADY 59H**

RWR ARDELLA 11D

Great colour, great hair, great temperament, just an all around honest bull. Lot 42 is balanced, powerful, and a true cow bull. Typical of the BLL 153J sons, he's wide topped and soft in his make. Lot 42's dam is a super feminine, great uddered, dark in colour cow we are big fans of. A maternal brother sold to the elite commercial herd of Geisler Cattle Co. in 2025. Homo polled.



Granddam - RWR 81C

43

## RWR ENTERPRISE 88N

CA-PG1508191 | RWR 88N | 17/1/2025 | Homo Polled

BW 94 | ADJ WW 832 | ACT WW 905 | ADJ YW 1574 | ACT YW 1420

CE	BW	WW	YW	MCE	MWW	Milk	API	TI
1.6	5.5	91.4	139.4	1	68.6	22.9	101.03	74.99

SKORS CHALLENGER 31E

S: **BLL ENTERPRISE 153J**

BEE LUSTER 553C

MCINTOSH HERITAGE 19G

D: **RWR URIAH 129K**

RWR URIAH 81C

Wide topped, sound in structure, thick hiped and docile, he's another homo polled Enterprise son. Fancy in his look, well muscled and soft made in an all-in-one impressive package. His dam is a young cow with a bright future. She reminds us of her dam, RWR 81C, a clean-fronted, pear-shaped powerful cow who was a great producer here for us. Knock horns off with this homo polled cow bull.



Dam - RWR 90C



Maternal Sib - RWR 66L

44

## RWR ENTERPRISE 149N

CA-PG1508266 | RWR 149N | 2/2/2025 | Hetero Polled

BW 90 | ADJ WW 836 | ACT WW 885 | ADJ YW 1463 | ACT YW 1320

CE	BW	WW	YW	MCE	MWW	Milk	API	TI
4.6	4.5	75.1	109.8	3	66.6	29	94.99	65.01

SKORS CHALLENGER 31E

S: **BLL ENTERPRISE 153J**

BEE LUSTER 553C

CHAMPS WALLACE

D: **RWR HAZEL 90C**

LWC MISS JAHARI 151S

A hetero polled Enterprise son that fits right in with the ones before him. He's great on the move, deep middled and thick across the loin. This calf was raised by a very powerful Champs Wallace daughter who we had here for years. She put her all into her calves, milked hard and put in her time. A maternal brother to this lot sold to Springhill Ranching Ltd. in our 2024 sale for \$21,000.



45

**RWR ENTERPRISE 14N**

CA-PG1505642 | RWR 14N | 2/1/2025 | Homo Polled

BW 99 | ADJ WW 905 | ACT WW 1085 | ADJ YW 1647 | ACT YW 1600

CE	BW	WW	YW	MCE	MWW	Milk	API	TI
1.2	5.4	84.4	124.9	0.3	68.9	26.7	97.08	68.88

SKORS CHALLENGER 31E

S: **BLL ENTERPRISE 153J**

BEE LUSTER 553C

IPU 56U RED LINER 215A

D: **RWR YEFFANIE 11G**

RWR YEFFANIE 39D

As long as a freight train, it's clear where his curve bending numbers come from. 1085lb WW, 1600lb YW, if you want some payweight on your steer cheque, this is the bull for you. With the commercial markets as hot as they are, take advantage of the gains and upward trends with a red hot BLL 153J son. This bull is all business and will surely help yours see those dividends on your calf crops. His dam was a great looking Red Liner 215A daughter that always raised the good ones. She was a hard working, broody solid red cow with beautiful neck extension and feet. Another son of hers was part of the Reserve Champion Pen of 3 Simmental Bulls at CWA in 2023 and went to work at the Geisler Cattle Co. operation. He's homo polled, which sweetens the deal.



Dam - RWR 11G



Maternal Sib - RWR 34L

46

**RWR ENTERPRISE 16N**

CA-PG1505646 | RWR 16N | 2/1/2025 | Homo Polled

BW 104 | ADJ WW 899 | ACT WW 1070 | ADJ YW 1656 | ACT YW 1595

CE	BW	WW	YW	MCE	MWW	Milk	API	TI
0.9	6	98.3	150.9	0.3	77.4	28.2	103.2	78.32

SKORS CHALLENGER 31E

S: **BLL ENTERPRISE 153J**

BEE LUSTER 553C

RWR FIREBALL 35B

D: **RWR ARDELLA 11D**

RWR ARDELLA 4B

Hot on the hooves of Lot 45, Lot 46 is another entry for the heavyweight division. Explosive growth and power in these bulls just showcases their true ability when it comes to maximizing feed conversion and utilization. This square bodied bull is balanced in both confirmation and temperament. Mothered by a powerful red cow we sure appreciated for her mass, capacity, and structure in both the udder and feet and legs, he's got the makings to really deliver on both the male and female side. Past sons of his dam, RWR 11D, have sold to Wheatland Farming Co. and Geisler Cattle Co. Just like the lot before him, he's homo polled.



Dam - RWR 11D

47

**RWR ENTERPRISE 4N**

CA-PG1505633 | RWR 4N | 1/1/2025 | Hetero Polled

BW 86 | ADJ WW 797 | ACT WW 930 | ADJ YW 1352 | ACT YW 1315

CE	BW	WW	YW	MCE	MWW	Milk	API	TI
2.4	4.6	83.6	123.8	1.5	70.3	28.5	98.66	69.6

SKORS CHALLENGER 31E

S: **BLL ENTERPRISE 153J**

BEE LUSTER 553C

COLB FIRED UP 17X

D: **TFL SHEILA 12A**

DOUBLE BAR D SHEILA 3X

One of our oldest cows in the herd, still producing bulls like this, is a great display of maternal longevity we love to see. As the market increases, so do the price of high-end replacement females, and to have the confidence they'll endure the test of time, is one of the best insurance policies you can have when searching for your next herd bull. The last BLL 153J son on offer is thick made, wide topped, and great on the move. A hetero polled bull with maternal lineage built to last.



Dam - TFL 12A





Dam - JJT 102K

48

## RWR DIMENSIONAL 133N

CA-PG1508317 | JJT 133N | 25/1/2025 | Homo Polled

BW 99 | ADJ WW 862 | ACT WW 910 | ADJ YW 1640 | ACT YW 1450

CE	BW	WW	YW	MCE	MWW	Milk	API	TI
2.1	5.8	98.2	150.9	1.4	74.8	25.7	103.26	78.97

CKCC LD DIMENSION 8965

CROSSROAD CONNECTED 12G

S: **WHEATLAND DIMENSIONAL 1147J**

D: **RWR SUGAR 102K**

JPCC MISS FOXY 115F

LWC MISS SUGAR JONES 197A

A soft fleshing, haired up homo polled son of LER Dimensional 1147J with tons of volume on a moderate frame. Clean fronted and deep middle - two traits that stem directly from Dimensional himself. We were fortunate to secure a semen pack on this AI sire and he's been a great asset to our frozen genetic inventory. Balanced in his make, bold in his look, he's one you won't want to miss if you're in search of a fancy red bull with satisfactory performance behind him. His dam is a female who is fancy, clean in her lines, and comes from a power cow we purchased years ago from the Little Willow Creek program, LWC Miss Sugar Jones 197A. She was a capacious, tanky female that always packed some serious punch into her calves. RWR 102K put a bull in the herd of Shane Sarauer at our 2025 sale and did a great job on her second calf.



Dam - SBMC 47J

49

## RWR DIMENSIONAL 127N

CA-PG1508316 | JJT 127N | 23/1/2025 | Homo Polled

BW 84 | ADJ WW 805 | ACT WW 880 | ADJ YW 1467 | ACT YW 1340

CE	BW	WW	YW	MCE	MWW	Milk	API	TI
9.3	2.5	80.2	120.8	5.3	61.9	21.8	102.52	71.8

CKCC LD DIMENSION 8965

LFE GAME FACE 338F

S: **WHEATLAND DIMENSIONAL 1147J**

D: **MCINTOSH WISH 47J**

JPCC MISS FOXY 115F

MCINTOSH WISH 33C

Another red Dimensional son born to a showy, productive female we purchased from the McIntosh Livestock program at Maymont, SK a few years ago. SBMC Wish 47J is a model cow with great udder structure. She moves with ease on a great set of feet and legs. We are very happy with the result of her second year in production and know this guy is setting up to sire great looking females with Dimensional on the top side and Wish on the bottom side. Patterned so similarly to the bull that precedes him with his softness, deep middle, and style, he's another homo polled herdsire prospect sporting a sweet 84lb BW.



Dam - JJT 108J

Maternal Sib - JJT 43L

50

## RWR ROLLER 143N

CA-PG1508319 | JJT 143N | 29/1/2025 | Homo Polled

BW 95 | ADJ WW 810 | ACT WW 864 | ADJ YW 1525 | ACT YW 1360

CE	BW	WW	YW	MCE	MWW	Milk	API	TI
10.2	2	79.6	116.1	4.7	61.4	21.6	122.7	74.65

SKORS HIGH ROLLER 34C

CROSSROAD CONNECTED 12G

S: **IPU 37G HIGH ROLLER 25J**

D: **RWR NOVA 108J**

IPU 245Z PASHMENIA 37G

RWR NOVA 49D

We were big fans of the IPU 25J progeny over the years and looking at this calf makes it even more deflating that we lost him last winter. This bull is so balanced and complete with impressive width, a great hip, top, and flank. He's another soft in his make, bold in his look homo polled firecracker of a red bull that will no doubt sire some very marketable calves. Born to a big hip, powerful, eye-catching black baldie momma with a great udder, she placed her first calf, a full sister to this bull, in the herd of LaBatte Simmentals for \$16,000.





## RWR ROLLER 18N

CA-PG1505648 | RWR 18N | 3/1/2025 | Hetero Polled

BW 82 | ADJ WW 820 | ACT WW 900 | ADJ YW 1468 | ACT YW 1350

CE	BW	WW	YW	MCE	MWW	Milk	API	TI
11	1.7	76.4	109.5	6.3	66.7	28.5	123.56	73.36

SKORS HIGH ROLLER 34C

RWR OUTSTAND 16B

S: **IPU 37G HIGH ROLLER 25J** D: **RWR SMARTIE 82L**

IPU 245Z PASHMENIA 37G

SKORS RED SMARTIE 406X

A potential calving ease prospect here with an 80lb BW, clean front end, smooth shoulder and length in his spine. We used his sire extensively in our purebred heifer pen and his calves came easily without issue. This dark red bull is a looker with his great haircoat, width, hip and lower quarter. His dam put her all into her first calf and we couldn't be more pleased. She herself came from a performance driven powerhouse of a cow, SKORS Red Smartie 406X, who left a true legacy here, raising RWR Fireball 35B who sold to Wallgren Farms for \$21,500, RWR Eastwood 25F who sold to Westgold Farms Ltd. for \$18,250, and RWR Heavy Duty 40H who sold to Fore See Cattle Co. for \$20,000. Hetero polled.



Granddam - SKORS 406X



## RWR KINSMAN 9N

CA-G1521692 | RWR 9N | 1/1/2025 | Horned

BW 87 | ADJ WW 895 | ACT WW 1040 | ADJ YW 1586 | ACT YW 1520

CE	BW	WW	YW	MCE	MWW	Milk	API	TI
3.7	6.3	99.2	143.1	2.2	81.2	31.6	106.1	77.92

RUGGED R BORDEAUX 0029H

KOP CROSBY 137W

S: **MASTERLOC PFF KINSMAN 2K** D: **RWR RAMONA 97K ET**

FSMB FLASH 13F

CROSSROAD RAMONA 375R

The last of the red Simmental division and he's a mega meat machine. There was a 25% chance of him being born to a polled bull, but coming horned, and he did. However, that doesn't change the fact that this guy is an impressive herdsire prospect with his freightliner build, style, and overall mass. It's no wonder his numbers are off the charts. An 87lb BW and a 1040lb WW...tell us his dam gave it her all without telling us! RWR 97K is a deep bodied cow with a great udder and teat placement. She's pear-shaped and powerful and this calf is proof of that. Pushing the scale down with a YW of 1520, ample testicular development, he's ready to get to work.



Dam - RWR 97K

### January Simmental EPD Breed Averages

CE	BW	WW	YW	MCE	MWW	Milk	API	TI
7.2	3.4	79.2	115.3	4.0	65.76	26.1	110.9	72.5

Top RWR Calving Ease Purebreds	Lot	Name	EPD
	56	RWR Hunter 93N	12.8
	54	RWR Dimensional 75N	11.9
	61	RWR Roller 158N	11.4
	51	RWR Roller 18N	11.0
	55	RWR Hunter 115N	10.7
	37	RWR Glacier 129N	10.2
	50	RWR Roller 143N	10.2
	34	RWR Glacier 36N	9.9
	39	RWR Red Bear 65N	9.7
	38	RWR Glacier 111N	9.6

Top RWR YWPDA Purebreds	Lot	Name	YWPDA
	41	RWR Enterprise 151N	4.51
	53	RWR Dime 56N	4.49
	32	RWR Glacier 148N	4.44
	45	RWR Enterprise 14N	4.42
	46	RWR Enterprise 16N	4.41
	30	RWR Red Redemption 62N	4.33
	40	RWR Sysco 7N	4.33
	31	RWR Red Bud 91N	4.29
	48	RWR Dimensional 133N	4.28
	42	RWR Enterprise 16N	4.27

Top RWR ADJ Weaning Weight Purebreds	Lot	Name	ADJ WW
	32	RWR Glacier 148N	934
	41	RWR Enterprise 151N	928
	45	RWR Enterprise 14N	905
	46	RWR Enterprise 16N	899
	52	RWR Kinsman 9N	895
	53	RWR Dime 56N	891
	40	RWR Sysco 7N	875
	30	RWR Red Redemption 62N	873
	42	RWR Enterprise 146N	864
	48	RWR Dimensional 133N	862

Top RWR ADJ Yearling Weight Purebreds	Lot	Name	ADJ YW
	53	RWR Dime 56N	1683
	41	RWR Enterprise 151N	1662
	46	RWR Enterprise 16N	1656
	45	RWR Enterprise 14N	1647
	48	RWR Dimensional 133N	1640
	40	RWR Sysco 7N	1632
	31	RWR Red Bud 91N	1619
	32	RWR Glacier 148N	1619
	30	RWR Red Redemption 62N	1615
	52	RWR Kinsman 9N	1586





Maternal Sib - RWR 48M



Maternal Sib - RWR 56K

53

## RWR DIME 56N

CA-BPG1506772 | RWR 56N | 11/1/2025 | Homo Polled

BW 100 | ADJ WW 891 | ACT WW 1035 | ADJ YW 1683 | ACT YW 1585

CE	BW	WW	YW	MCE	MWW	Milk	API	TI
0.9	5.4	87.7	138.3	0.8	66.8	22.9	99.41	71.67

CKCC LD DIMENSION 8965

LFE BEAST MODE 305D

S: **WHEATLAND DIMENSIONAL 1147J** D: **RWR MARVEL 44G**

JPCC MISS FOXY 115F

RWR MARVEL 1E

Moving into the black bulls with a son of RWR Marvel 44G. She's the best of both worlds - feminine and tanky - all put into one. She's sound, big bodied, capacity driven and elegant in her presentation. She truly is the ideal female and mated with the ideal female maker, LER Dimensional 1147J, this should be another son of hers that you should want to keep every female out of! Her first 2 sons averaged \$28,750 with her first calf going to the great herds of Willow Creek Simmentals & Warkentin Land & Cattle, and her second bull calf to Crossroad Farms in our 2025 sale. RWR 56N is a full sibling to the bull she sold to Crossroad Farms last year and is almost identical in his make. He's thick, deep, and strong-topped. He's heavy on the style and correct on structure. He's one you need to get your eyes on as we feel his picture just doesn't do him the justice he deserves. Comes with stacked maternal backing, impressive numbers, and bold paternal traits. Homo polled, hetero black.



Maternal Sib - RWR 112M



Maternal Sib - RWR 29K

54

## RWR DIMENSIONAL 75N

CA-BPG1508173 | RWR 75N | 14/1/2025 | Hetero Polled

BW 73 | ADJ WW 803 | ACT WW 925 | ADJ YW 1430 | ACT YW 1360

CE	BW	WW	YW	MCE	MWW	Milk	API	TI
11.9	0.9	77.2	115.3	6.5	61.3	22.7	114.55	72.36

CKCC LD DIMENSION 8965

RWR OUTSTAND 16B

S: **WHEATLAND DIMENSIONAL 1147J** D: **RWR MARVEL 1E**

JPCC MISS FOXY 115F

DOUBLE BAR D JESSY 408C

If any female can rival RWR Marvel 44G, it's her dam, RWR 1E. Moderate in frame but an absolute powerhouse with volume and capacity that's second to none, she's another top tier black baldie we wish we had a whole herd of. RWR Marvel 1E's maternal traits are backed by a tanky, powerful female - Double Bar D Jessy 408C. A maternal sib to Lot 54, RWR Capitalist 29K, sold to the astute program of Double Bar D Farms for \$21,000. A bit of extra chrome to accent his strong physical attributes, he's one you'll want to see in real time to fully appreciate. Softness, boldness, and thickness in a hetero polled, hetero black, stylish package. 73lb BW and great growth.



Dam - RWR 101K

55

## RWR HUNTER 115N

CA-BPG1508232 | RWR 115N | 20/1/2025 | Homo Polled

BW 84 | ADJ WW 765 | ACT WW 820 | ADJ YW 1499 | ACT YW 1330

CE	BW	WW	YW	MCE	MWW	Milk	API	TI
10.7	2.3	71.2	113.1	4.6	55.7	20.1	124.29	73.75

LFE BOUNTY 3118Z

CROSSROAD CONNECTED 12G

S: **WLB BOUNTY HUNTER 365C** D: **RWR QUORUM 101K**

LFE BS MARY 26A

RWR QUORUM 10F

A neat heifer pen prospect born at 84lbs to another fancy made black baldie with a great udder and good set of feet and legs. This first son off Bounty Hunter 365C is clean in his lines, strong in his hip structure and deep in his middle third. The females in the WLB dispersal sale out of Bounty Hunter really caught our attention and we were very impressed with the line up of Bounty Hunter daughters that were sold that day. Get this guy on your radar! Homo polled, hetero black.



56

**RWR HUNTER 93N**

CA-BPG1508198 | RWR 93N | 18/1/2025 | Hetero Polled

BW 82 | ADJ WW 744 | ACT WW 840 | ADJ YW 1406 | ACT YW 1300

CE	BW	WW	YW	MCE	MWW	Milk	API	TI
12.8	1	61	95.6	5.8	52.1	21.6	123.85	69.45

LFE BOUNTY 3118Z

S: **WLB BOUNTY HUNTER 365C**

LFE BS MARY 26A

LFE BEAST MODE 305D

D: **RWR QUORUM 10F**

RWR MS STANDOUT 97C

Another calving ease candidate with ample length, depth, and chrome. 82lb BW, 840lb WW, give your first calvers the tools to succeed with Lot 56. His dam has been a great cow for us. She has great neck extension and udder with ideal teat placement. Hetero polled, homo black.



Dam - RWR 10F

57

**RWR HUNTER 116N**

CA-BPG1508233 | RWR 116N | 21/1/2025 | Homo Polled

BW 91 | ADJ WW 819 | ACT WW 915 | ADJ YW 1533 | ACT YW 1410

CE	BW	WW	YW	MCE	MWW	Milk	API	TI
8.4	3	78.7	117.6	3.3	60.5	21.1	119.19	77.1

LFE BOUNTY 3118Z

S: **WLB BOUNTY HUNTER 365C**

LFE BS MARY 26A

ERIXON BLACK IMPACT 185D

D: **RWR TRIXIE 48G**

RWR MS FIREBALL 39E

Small headed, square on his foot, long bodied. Another Bounty Hunter son we appreciate for his haircoat, softness and performance. He has a bit more jam to him than the first 2, so would recommend him for 2nd calvers or cows. Great hip, deep flanked, and strong topped, his sweet, moderate dam did a great job. She is more refined in her make and very feminine. Homo polled, hetero black.



Dam - RWR 48G

58

**RWR HUNTER 57N**

CA-BPG1506773 | RWR 57N | 11/1/2025 | Homo Polled

BW 98 | ADJ WW 807 | ACT WW 935 | ADJ YW 1535 | ACT YW 1440

CE	BW	WW	YW	MCE	MWW	Milk	API	TI
6.9	3.7	77.6	120.5	3.2	60.9	22.1	122.63	75.01

LFE BOUNTY 3118Z

S: **WLB BOUNTY HUNTER 365C**

LFE BS MARY 26A

LFE BEAST MODE 305D

D: **RWR BUBBLY 36G**

RWR BUBBLY 24D

The last Bounty Hunter son is another lengthy built bull with a small head and clean front third. He's great on the move, striding out on a solid set of feet and legs. His dam is a great looking cow with an awesome udder and loads of style. His females should be awesome! A maternal brother sold to Percyview Farms Ltd. in 2025. Homo polled and hetero black.



Maternal Sib - RWR 1M





Dam - RWR 60L

59

## RWR ROLLER 23N

CA-BPG1505654 | RWR 23N | 3/1/2025 | Homo Polled

BW 88 | ADJ WW 830 | ACT WW 910 | ADJ YW 1536 | ACT YW 1400

CE	BW	WW	YW	MCE	MWW	Milk	API	TI
7.7	2.6	82.3	121	4.1	64.8	23.6	114.54	74.6

SKORS HIGH ROLLER 34C

WHEATLAND DIMENSIONAL 1147J

S: **IPU 37G HIGH ROLLER 25J** D: **RWR QUORUM 60L**

IPU 245Z PASHMENIA 37G

RWR QUORUM 79G

We're back in black on the IPU 25J sons. This bull is so neat, just an all out original in his build with his angular, clean front, small head and capacious middle. He's strong hiped but yet refined in his bone structure too, which makes him something unlike the others. He was born at 88lbs to a great little red blaze faced cow with good udder structure. We are excited to see what her second calf turns into! If you're looking for a calving ease bull with a little show to him, check him out! The females should be something special. He's homo polled and hetero black.



Dam - RWR 3H

60

## RWR ROLLER 153N

CA-BPG1508286 | RWR 153N | 6/2/2025 | Homo Polled

BW 94 | ADJ WW 746 | ACT WW 780 | ADJ YW 1394 | ACT YW 1230

CE	BW	WW	YW	MCE	MWW	Milk	API	TI
6.3	3.1	69.1	99.1	3.7	59.6	25	111.55	65.59

SKORS HIGH ROLLER 34C

LFE BEAST MODE 305D

S: **IPU 37G HIGH ROLLER 25J** D: **RWR LADY 3H**

IPU 245Z PASHMENIA 37G

RWR LUCY 88F

So much hair on this bull which is a huge asset in our Canadian winters. He's smooth made, fluid on the move and another great one out of IPU 25J. His dam is a young, productive cow that puts her all into her calves. She has a tidy udder and is sound structured. If you're searching for a hairy, homo polled, homo black bull, we encourage you to check this one out.



Dam - KHG 32J

61

## RWR ROLLER 158N

CA-BPG1508291 | RWR 158N | 10/2/2025 | Homo Polled

BW 82 | ADJ WW 797 | ACT WW 810 | ADJ YW 1496 | ACT YW 1295

CE	BW	WW	YW	MCE	MWW	Milk	API	TI
11.4	1.1	70	102.2	5.2	59.2	24.2	125.13	71.11

SKORS HIGH ROLLER 34C

RWR EASTWOOD 25F

S: **IPU 37G HIGH ROLLER 25J** D: **KHG NIKKI 32J**

IPU 245Z PASHMENIA 37G

KHG PAYTON 44C

Don't overlook this last IPU 25J son to ever be on offer. Another calving ease candidate with an 82lb birthweight. He's built right with his smooth front and long spine. Lots of hair on this one too! His dam is a great female we purchased from Westgold Farms Ltd. a few years ago and she's a very angular female with clean lines and a great udder. Rest easy knowing your heifers are bred to this homo polled, homo black heifer pen prospect.





# *The Sale Females of 2026*

**Purebred & Commercial Open Heifers**

*Foundational building blocks for  
a profitable cowherd.*







62

## RWR ROX 163N

CA-1508296 | RWR 163N | 13/2/2025 | Horned

BW 84 | ADJ WW 755 | ACT WW 774

CE	BW	WW	YW	MCE	MWW	Milk	API	TI
4.9	4.2	77.2	113.2	2.2	72.6	34	102.71	68.85

SAJ MOGUL 29F

S: **SAJ MOGUL 42H**

BLUSHROSE MS IMPORT 15X

RWR WILDCARD 67E

D: **RWR ROX 35J**

RWR ROX 62E

A powerful, deep bodied, attractive Mogul daughter here that we think highly of. She's mid-Feb born but that hasn't stopped her in terms of excellent performance and growth. She's bold in her look, soft in her make, and stylish on the move. What more could you ask for in a fullblood female? Her dam is a great uddered, double goggled female sired by RWR Wildcard 67E. Doability and easy fleshing genetics here.



63

## RWR JEWEL 48N

CA-1506461 | RWR 48N | 9/1/2025 | Horned

BW 86 | ADJ WW 608 | ACT WW 706

CE	BW	WW	YW	MCE	MWW	Milk	API	TI
4.6	4.2	68.1	102.2	3.5	64.8	30.7	96.28	62.22

SAJ MOGUL 29F

S: **SAJ MOGUL 42H**

BLUSHROSE MS IMPORT 15X

RWR TONKA 23D

D: **RWR JEWEL 23J**

RWR JEWEL 81D

Cherry red, incredible hair, double goggled and lip rings, another attractive Mogul daughter that's our kind. Thick topped, deep bodied and clean fronted, she's an angular, feminine full-blood with a touch of performance. Her dam is extreme in her muscling, really nice uddered, and strong footed. Her grand dam is the mother to lot 5 and has raised some of our high sellers over the years. A true front-runner here.



Dam - RWR 23J



64

## RWR LADY 154N

CA-1508287 | RWR 154N | 6/2/2025 | Horned

BW 86 | ADJ WW 670 | ACT WW 716

CE	BW	WW	YW	MCE	MWW	Milk	API	TI
5.7	4.1	74.4	105.8	2.7	70.5	33.3	106.81	70.52

ANCHOR D OUTLOOK

S: **CROSSROAD OUTPUT 92K**

CROSSROAD EKAYLA 91E

SOUTHSEVEN EGO 13F

D: **RWR LADY 123H**

RWR BELLE 95F

Square in her make, tons of pigment, great colour, deep middled and strong hipped. An attractive Output 92K daughter we appreciate for her neck extension and pen presence. Her dam is a big middled, nice uddered, power cow with moderate frame.



Dam - RWR 123H



65

**RWR RHONDA 13N**

CA-1505641 | RWR 13N | 1/1/2025 | Horned

BW 73 | ADJ WW 627 | ACT WW 710

CE	BW	WW	YW	MCE	MWW	Milk	API	TI
6.5	4	76.5	109.8	3.9	68.5	30.2	106.96	69.53

ANCHOR D OUTLOOK

S: **CROSSROAD OUTPUT 92K**

CROSSROAD EKAYLA 91E

NUG DAKOTA 249H

D: **RWR RHONDA 6K**

RWR RHONDA 51F

Superior length, hair and pigment on this sweet heifer calf sired by CRF Output. Loads of style and eye appeal with that dark colour, double goggles and lip rings. Her dam is a feminine cow with a good udder and feet.



66

**RWR MARILYNN 166N**

CA-1508299 | RWR 166N | 13/2/2025 | Horned

BW 90 | ADJ WW 685 | ACT WW 710

CE	BW	WW	YW	MCE	MWW	Milk	API	TI
3.6	5.2	73.1	107.9	1.8	69.7	33.1	104.16	68.98

ANCHOR D OUTLOOK

S: **CROSSROAD OUTPUT 92K**

CROSSROAD EKAYLA 91E

VIRGINIA MACGYVER 9D

D: **RWR MARILYNN 83G**

TFL MARILYNN 53A

A bull raiser here sired by Output. She's wide topped, deep middled, easy fleshing and structurally correct. Tons of hair and great colour, she's a middle of February born fullblood that has the genetic backing to be proud of. Dam is moderate but powerful, deep middled female herself with a great udder. The Output sons are impressive but we feel his females are his strong point and that is largely the reason we purchased him.



Dam - RWR 83G

67

**RWR LASS 35N**

CA-1505666 | RWR 35N | 6/1/2025 | Horned

BW 89 | ADJ WW 671 | ACT WW 805

CE	BW	WW	YW	MCE	MWW	Milk	API	TI
5.3	4.3	76.5	109.3	3.5	72.2	33.9	112.25	72.13

ANCHOR D OUTLOOK

S: **CROSSROAD OUTPUT 92K**

CROSSROAD EKAYLA 91E

SOUTHSEVEN EGO 13F

D: **RWR LADY 12H**

RWR LAURIE 26F

Great on the move, double goggled and easy fleshing. She's a heifer we appreciate for her depth and mass. Her dam is a great uddered, soggy made, powerful cow backed by legends like FGAF Barbossa 707X, Westgold Standout 42Z, and IPU Laredo 213W.







Granddam - RWR 101G

68

## RWR SCARLETT 131N

CA-1508252 | RWR 131N | 25/1/2025 | Horned

BW 89 | ADJ WW 713 | ACT WW 732

CE	BW	WW	YW	MCE	MWW	Milk	API	TI
7.2	4.2	81.7	114.1	4.3	78.6	37.7	101.42	70.85

HPR WILLIAM 117G

S: **SAJ BOONE 84J**

SAJ ALEXANDRA 60E

KHG STERLING 16H

D: **RWR SCARLETT 101L**

RWR SCARLETT 101G

A moderately built, heavily pigmented fullblood sired by SAJ Boone 84J. She's a fancy female with ample length, thickness, and depth. Born to a first calver, her dam did a great job producing this stylish heifer on her first go.



Granddam - RWR 59H

69

## RWR LASSY 46N

CA-PG1506459 | RWR 46N | 8/1/2025 | Homo Polled

BW 82 | ADJ WW 680 | ACT WW 776

CE	BW	WW	YW	MCE	MWW	Milk	API	TI
8.1	3	81.4	116.8	3.7	62.3	21.6	108.56	70.87

WFL MOUNTAIN VIEW 4J

S: **BLACK GOLD GLACIER 192L**

RF CERTAINLY FLIRTIN 532C

MUIRHEADS IDENTITY 229Z

D: **RWR LADY 132K**

RWR LADY 59H

Ultra feminine, smooth made, and tons of volume on these BGS Glacier 192L daughters. We are big fans of his bulls and females alike and believe they offer what the industry is looking for in terms of doability, frame, and overall completeness. Mothered by a sweet natured, perfect uddered, good footed dam that has a bright future here. She is a favourite of ours. Homo polled and as fancy as can be!



Dam - WFL 8068U Red Flash 2021H

70

## RWR RED FLASH 63N

CA-PG1506779 | RWR 63N | 12/1/2025 | Homo Polled

BW 84 | ADJ WW 582 | ACT WW 682

CE	BW	WW	YW	MCE	MWW	Milk	API	TI
7.5	2.9	76.9	109.6	1.4	51.7	13.2	104.88	67.87

WFL MOUNTAIN VIEW 4J

S: **BLACK GOLD GLACIER 192L**

RF CERTAINLY FLIRTIN 532C

WFL WESTERDALE 6E

D: **WFL 8068U RED FLASH 2021H**

WFL MS BLACK FLASH 8068U

Raised by a power female we purchased from Westway Farms, this gem of a heifer calf is tanky, capacious, and thick. The last BGS Glacier 192L daughter we made the tough decision on to part with. Homo polled.



71

**RWR LILY 76N**

CA-PG1508174 | RWR 76N | 14/1/2025 | Hetero Polled

BW 89 | ADJ WW 685 | ACT WW 765

CE	BW	WW	YW	MCE	MWW	Milk	API	TI
2.6	5	89.3	135.5	1.8	66.8	22.1	103.34	74.72

SKORS CHALLENGER 31E

S: **BLL ENTERPRISE 153J**

BEE LUSTER 553C

MCINTOSH HERITAGE 19G

D: **RWR LILY 60K**

RWR LILY 8D

We asked ourselves why this BLL Enterprise 153J daughter is in the sale and summed it up to the fact that we wanted to bring some of our best. There's so much volume to this heifer, depth of middle, and power. She looks great on the move and is super complete. An original that stands out amongst the rest! She's mothered by one of our favourite young cows on the place, that has a tidy udder and great structure. Hetero polled. (Scurred polled)



Dam - RWR 60K

72

**RWR TRIXIE 5N**

CA-PG1505634 | RWR 5N | 1/1/2025 | Homo Polled

BW 70 | ADJ WW 606 | ACT WW 670

CE	BW	WW	YW	MCE	MWW	Milk	API	TI
12.5	0.4	65.7	89.4	7.2	56.6	23.7	117.24	66.14

WFL IDENTITY 23X

S: **MUIRHEADS IDENTITY 229Z**

MUIRHEADS MISS 968J 88W

IPU 37G HIGH ROLLER 25J

D: **RWR TRIXIE 4L**

RWR TRIXIE 94J

An Identity 229Z daughter that's stylish in her make and moderate in her build. Raised by a first calver with a great udder, loads of hair and a great set of feet and legs. She was our favourite in the bred heifer pen as she was super classy looking and impossible to fault. Homo polled.



Sire - Muirheads Identity 229Z

73

**RWR X-SULA 8N**

CA-BPG1505637 | RWR 8N | 1/1/2025 | Hetero Polled

BW 73 | ADJ WW 631 | ACT WW 700

CE	BW	WW	YW	MCE	MWW	Milk	API	TI
11.2	1.3	72.7	106.5	5.2	56.9	20.5	115.14	71.44

SKORS HIGH ROLLER 34C

S: **IPU 37G HIGH ROLLER 25J**

IPU 245Z PASHMENIA 37G

TNT BOOTLEGGER Z268

D: **RWR X-SULA 15L**

RWR X-SULA 18B

Probably our favourite black on offer in the female division. She's incredible to analyze, with her thick haircoat, deep body and overall style. She's got a ton of volume and is super complete in her appearance and confirmation. Her dam is a TNT Bootlegger Z268 daughter and he's been known for his remarkable females. She herself is a bold, capacious, great uddered female and we are excited about what she's going to do here with this only being her first calf. Hetero polled and hetero black.



Granddam - RWR 18B





74

## RWR JESSY 51N

CA-BPG1506463 | RWR 51N | 9/1/2025 | Homo Polled

BW 71 | ADJ WW 648 | ACT WW 700

CE	BW	WW	YW	MCE	MWW	Milk	API	TI
11.7	0.6	69.1	97	5.9	56.7	22.1	118.9	68.82

SKORS HIGH ROLLER 34C

MUIRHEADS IDENTITY 229Z

S: **IPU 37G HIGH ROLLER 25J** D: **RWR JESSY 1L**

IPU 245Z PASHMENIA 37G

RWR JESSY 14J

Being sired by IPU 25J automatically means tons of hair. She's a sweet tempered, long bodied female that moves freely and easily on a great set of feet and legs. Her dam did a great job on her first calf. Power on the bottom side as she goes back to Double Bar D Jessy 408C. Homo polled and hetero black.



75

## RWR NOVA 38N

CA-BPG1508310 | RWR 38N | 7/1/2025 | Homo Polled

BW 81 | ADJ WW 643 | ACT WW 768

CE	BW	WW	YW	MCE	MWW	Milk	API	TI
9.9	2.4	75.3	118.4	4.7	58.7	21	125.27	76.03

LFE BOUNTY 3118Z

LFE BEAST MODE 305D

S: **WLB BOUNTY HUNTER 365C** D: **RWR NOVA 60G**

LFE BS MARY 26A

RWR NOVA 49D

A homo polled, homo black Bounty Hunter who's clean fronted, deep bodied and fancy throughout. Her dam is a feminine, clean in her lines, moderate in frame cow that still loads power into her progeny. She has a son working in the herd of Robert Ellingson of North Dakota.

Watch for *progeny* off our *latest herd sires*:

Skywest Rip Tide 669M



Black Gold Viking 128M



LFS Overland 38M



Kuntz Marley 37M



Red Top Wrangler 31M



Lazy S Blk Justice 937M





The commercial open heifers on offer this year are from the top. They are capacity-driven with big-time volume. They're backed by a strong and deep set of highly maternal cows and sired by high-end Angus and Simmental bulls. These commercial heifers are on a full herd health program and are palpated for breeding soundness. Heifers will be sold in pre-sorted groups on sale day.

## Lots 76-86





Return Undeliverable Mail to:



**BOHRSON**  
**MARKETING SERVICES**

28336 TWP RD 320 :: Mountain View County, AB :: T4H 4M7

If you wish to stop receiving catalogues from BMS, please  
email [jodi@bohrson.com](mailto:jodi@bohrson.com) or call/text 403-519-3515 to be  
removed from the mailing list.



**RETURN POSTAGE GUARANTEED**  
**PORT DE RETOUR GARANTI**