



PURSUIT



EXCELLENCE

FEBRUARY 9, 2026

1PM

JACKSON CATTLE CO. SALE FACILITY

SEDLEY, SK

Last year we acknowledged that we were in the best cattle market in history. It's nice to sit here a year later and make the same statement. The same fundamentals exist and we believe the cow numbers will be even lower going to grass. The market is poised to be VERY strong as we near spring and therefore we believe the post calving, pre grass cull on the cow herd will be strong.

This year's bull offering is a bit larger as we welcome the addition of more Simmental yearlings from Jordie & Luke as well as the yearling Red Angus group from Double B that come from their early calving group. Whether you want Two Year Olds (Black Angus, Red Angus or SimAngus), Yearling Simmentals or Jan/Feb born yearling Red Angus, we have something for everyone in this offering.

We invite you to join us on sale week to view the bulls in their large pens or on Feb 9th sale day.

Sincerely,

THE PURSUIT OF EXCELLENCE SALE GROUP

JORDIE & LUKE
BAXTER, CRAIG, CHARA
CHANCE & LEVI
KEVIN, RHETT & BLAKE

Meet the Crew



KEVIN BLAIR



BLAKE MACMILLEN



CRAIG, CHARA & BAXTER
BLAIR



JACKSON FAMILY



GRANT HAMILTON



JORDIE BUBA & LUKE LEWIS



RHETT JONES & FAMILY



Welcome

TO THE 2026 PURSUIT OF EXCELLENCE BULL SALE

FEBRUARY 9 · 1PM

LOCATION

Jackson Cattle Co. Sale Facility
Box 159, Sedley, SK S0G 4K0
306-537-9251

Directions From Sedley: Go 4 miles North on
620, then 1/2 mile west & 1/2 mile back North.

SALE DAY PHONES

Kevin Blair	306-365-7922
Blake MacMillan	306-528-7484
Baxter Blair	306-699-7807
Craig Blair	306-699-7607
Chara Blair	306-699-7037
Levi Jackson	306-537-9251
Chance Jackson	306-537-4690
Jordie Buba	780-818-4047
Luke Lewis	403-771-3293
Rhett Jones	306-629-7878

SALE MANAGEMENT



T Bar C Cattle Co. Ltd.
Box 2330, Warman, SK S0K 4S0
306-933-4200 info@tbarc.com
www.buyagro.com

Chris Poley Auctioneer 306-220-5006
Shane Michelson Ringside 403-363-9973
Ben Wright Ringside 519-374-3335
Levi Rimke Ringside 204-851-4515

Bohrson Marketing Services Ltd.
RR4-Site 7-Box 28, Olds, AB T4H 1T8
403-519-3515

scott@bohrson.com rebecca@borson.com



Scott Bohrson 403-370-3010
Jaxon Payne 306-830-0456
Rob Voice Blockman 306-270-6082
Nate Marin Ringside 306-869-7130

SALE CONSULTANTS

OBI Livestock	
Mark Holowaychuk	403-869-4990
Roger Peters	403-828-7130
Kent McCune	817-602-8629
Western Ag Reporter	
Tony Heins	701-400-4435

DELIVERY

Delivery will be arranged to central locations in Western Canada. For US customers, delivery will be arranged to central locations in the Northern and Central USA.

HOTEL ACCOMMODATIONS

Sleep Inn Regina East 306-791-1925

INSURANCE

Alameda Agencies
Bonnie Thompson 306-483-7311

VIDEO SALE

We have elected to go with a video display only sale again for this year and forgo running big, two year old bulls through the handling system and into the sale ring. We do this primarily for the safety of the bulls to reduce the risk of injury and bruising. As always, the bulls will be displayed and sorted for viewing in pens right outside of the sale center. We feel that with your pre-sale evaluation and the excellent videos broadcast on the screens, that you can make a selection with confidence just as previously.

DLMS

Watch & Bid Online with
WWW.DLMS.CA
Mark Shologan

Internet Bidding Available



780-699-5082

Welcome

FROM T BAR C CATTLE CO. LTD.

We enthusiastically welcome you to the 2026 Pursuit of Excellence bull sale, how can one not be enthusiastic about the cattle business in 2026! This sale name encompasses the Blair's family philosophy on everything they do in life. They strive to push the limits and continue to pursue a higher standard in everything they do, and they have surrounded themselves with like minded partners and crew.

This sale continues to be one of the largest Two-Year-Old Angus bull sales around. Buy these extra age bulls with confidence as they have been bred and developed to be long lasting, herd improvers that will go out and cover big pastures with ease. Many of these bulls are the result of an extensive embryo program that combines elite females with the best bulls available. These breeders not only travel Canada to source the genetics offered in this sale but also the USA, South America and beyond. The yearling bulls are also the result of a specific program, mainly AI sired and born early to have the age and size needed to go to work for those of you that prefer yearling bulls.

The success of the recent Opportunity Knocks female sale hosted by these folks further validates the genetic value of these bulls. As many of them were siblings out of the same core of donor dams and those females were highly sought after selling across Canada, the United States and Mexico.

As you look through this offering, I'm confident that you will find bulls that will suit your requirements, whether it be calving ease, performance, maternal value or a combination of all three. The high standard that comes with the Pursuit of Excellence also applies to customer service, if you have never sourced herd sires from this sale do so with a great deal of confidence knowing this group is with you every step of the way.

Hopefully you can make the trip to Sedley to be with us sale day in the beautiful heated sale facility but if you are unable to attend or require any assistance prior to or sale day, feel free to reach out to any of the T Bar Team as we are all very familiar with the programs and the cattle and are more than happy to confidentially give you a hand.

Chris Poley

Welcome

FROM BOHRSON MARKETING

The Pursuit of Excellence Bull Sale is an impressive offering built around those timeless, simple but effective ideas - working with great partners, taking care of your customers, and continually improving your offering. On February 9 you can witness the result of those ideas at the Jackson Cattle Co sale facility near Sedley, SK. With the incredible times we are experiencing in this industry, there is no better time to reinvest in the kind of bull supplier and genetics that pay dividends for years to come.

With many years of annual Pursuit of Excellence sales under our belts, it is easy to describe what to expect for 2026 - sensibly developed yearling and two year old bulls, out of amazing cows, and backed by great programs. It is always fun to work with a sales group that prioritizes intentional breeding, disciplined selection, and a clear focus on cattle that can move programs forward. This multi-breed offering features Angus, Red Angus, Simmental, and SimAngus bulls designed to suit a variety of environments and breeding strategies. It really needs to be noted the intentional focus on the two year old program and developing those bulls to this stage. They have gone through many culling stages, been developed slowly, and still have all the genetic bells and whistles you could ever want. In 2026 there may be no better bang for your buck than those good two year olds.

We encourage you to study this catalog and note the quality but also all of the ½, ¾, and full brothers backed by donor cows or their descendants. To study the programs behind the offering and their focus, consistency, and deep agriculture roots, And most of all we encourage you to join us near Sedley at the Jackson Sale Facility and be part of a sale that truly earns its name. If you are unable to attend, please reach out to our team and we would be happy to assist in your bull selections. See you in Sedley!

The Bohrson Marketing Team



CHRIS POLEY 306-220-5006



SHANE MICHELSON 403-363-9973



BEN WRIGHT 519-374-3335



LEVI RIMKE 204-851-4515



SCOTT BOHRSON
403-370-3010



TAYLOR RICHARDS
306-821-4169



MARTIN BOHRSON
306-220-7901



ROBERT VOICE
306-270-6082



JAXON PAYNE
306-830-0456



NATE MARIN
306-869-7130



CODY HANEY
403-845-8806



DARRYL SNIDER
780-385-5561



RILEY BOHRSON
639-213-7777

Calving Ease Legend

Calving Ease is often related to birth weight of a bull. This is partly true but there are other factors that influence calving ease. The dam and her management are at least 50% of calving ease. Also, the consistency of the birth weights of the sire and dam should be considered. Nutrition, gestation and environment all influence birth weight. We have rated each bull in the sale based on the information we have.

*** Should produce minimal problems when bred to medium to large frame heifers.

** Recommend for larger frame heifers, second calvers or small framed cows.

* Recommend for mature cows 1400 pounds plus.

Table of Contents

Lots 1-27 TWO-YEAR OLD BLACK ANGUS BULLS

Lots 28-30 YEARLING BLACK ANGUS BULLS

Lots 31-57 TWO-YEAR OLD RED ANGUS BULLS

Lots 58-64 YEARLING RED ANGUS BULLS

Lots 65-70 TWO YEAR OLD SIMANGUS BULLS

Lots 71-85 YEARLING SIMMENTAL BULLS





Black Angus

TWO-YEAR OLD BULLS

Lots
1-27

On behalf of the Jackson Family, we would like to welcome you to the 2026 Pursuit of Excellence Bull Sale. It is indeed an honor to be a part of this offering, and having been a part of it from the very beginning, we understand and appreciate the Blair family's commitment to agriculture and their dedication to supporting the industry. All the bulls from the Blair families as well as our own are managed at Jackson Cattle Co so, please feel free to stop in at any time prior to the sale and view the Angus offering in this years sale.

**LOT 1****BLAIR'S INTERNATIONAL LAW 510M**

BBC 510M Feb 20/24 2397907 BW: 89lbs WW: 820lbs

O C C ZODIAC 655Z
MC CUMBER LA JOYA 098
 LASSIE 113 OF MC CUMBER

BAR-E-L NATURAL LAW 52Y
BAR-E-L ERICA 74A
 HF ERICA 339T

O C C UMAX 820U
 O C C DIXIE ERICA 628W
 O C C MISSING LINK 830M
 LASSIE 935 OF MC CUMBER

S A V BISMARK 5682
 BAR-E-L MAGNOLIA 143K
 PEAK DOT FAME 2N
 HF ERICA 46P



BW	CED	WW	YW	MILK	CE
1	3	60	100	24	**



MC CUMBER LA JOYA 098
 SIRE OF LOTS 1-3

We used McCumber LaJoya on Erica 74A specifically to ensure maternal greatness on both sides of the pedigree. Anyone who has toured McCumber's has commented on the awesome Lassie 113 of McCumber donor female. The flush has been extremely successful and there are 3 full sibs on offer. We think Blair's International Law 510M might be the best of the three BUT I can tell you it's very hard to decide. Come check them out on sale week and make your own decision.

Retaining 1/3 semen interest

BLAIR'S. AG



Bar-E-L Erica 74A
 DAM OF LOT 1

LOT 2**2****BLAIR'S CIVIL LAW 574M**

BBC 574M Mar 28/24 2397855 BW:91lbs WW:725lbs

O C C ZODIAC 655Z

MC CUMBER LA JOYA 098

LASSIE 113 OF MC CUMBER

BAR-E-L NATURAL LAW 52Y

BAR-E-L ERICA 74A

HF ERICA 339T

O C C UMAX 820U

O C C DIXIE ERICA 628W

O C C MISSING LINK 830M

LASSIE 935 OF MC CUMBER

S A V BISMARCK 5682

BAR-E-L MAGNOLIA 143K

PEAK DOT FAME 2N

HF ERICA 46P



BW	CED	WW	YW	MILK	CE
1.3	3	49	78	19	**

Blair's Civil Law 574M is the flush brother that has that extra stretch in his front end. He's long made, strong topped and has a great skull. Expect excellent calving ease and you will have a special place in your heart for all the daughters.

Retaining 1/3 semen interest.

BLAIR'S. AG**BLAIRSWEST ERICA 1G**

MATERNAL SIB TO LOTS 1-3

**BLAIR'S ERICA 267F**

MATERNAL SIB TO LOTS 1-3

MAT. SIB TO LOT 3

Another of the Erica 74A x LaJoya flush mates for you to evaluate. Check out the outcross nature of this mating.

BLAIR'S. AG

Internet Bidding Available



For more information call:
Mark Shologan 780-699-5082 or Purebred Team 780-991-3025

3

BLAIR'S STATE LAW 527M

BBC 527M Feb 25/24 2397917 BW:94lbs WW:840lbs

O C C ZODIAC 655Z
MC CUMBER LA JOYA 098
LASSIE 113 OF MC CUMBER

BAR-E-L NATURAL LAW 52Y
BAR-E-L ERICA 74A
HF ERICA 339T

O C C UMAX 820U
O C C DIXIE ERICA 628W
O C C MISSING LINK 830M
LASSIE 935 OF MC CUMBER

S A V BISMARCK 568Z
BAR-E-L MAGNOLIA 143K
PEAK DOT FAME 2N
HF ERICA 46P



BW	CED	WW	YW	MILK	CE
2.2	3	48	75	28	**

4

BLAIR'S DUFF HD 579M RC

BBC 579M Apr 02/24 2397844 BW:95lbs WW:655lbs

RED MANN RED BOX 55C EZAR SET UP 9178
RED DUFF HD 2046
RED DUFF CITA 4060 15522

BAR-E-L NATURAL LAW 52Y
BAR-E-L ERICA 74A
HF ERICA 339T

RED SLGN WIDELOAD 920W
RED PELTON MISS AJA 0839U
DUFF NAPOLEON 232
RED GT CITA 4060

S A V BISMARCK 568Z
BAR-E-L MAGNOLIA 143K
PEAK DOT FAME 2N
HF ERICA 46P

BW	CED	WW	YW	MILK	CE
2.7	0	52	89	29	*



LOT 4

A cool opportunity to buy an April born direct son off Erica 74A in a black hide with a red gene. This Duff HD is also a full brother to the Blairswest High Definition bull that they showed this fall and had so many friends. Get in on maybe the very last chance to add a direct Erica 74A black/red carrier son to walk your pasture.

Retaining 1/3 semen interest.

BLAIR'S. AG



BLAIRSWEST HIGH RESOLUTION 32M
FULL SIB TO LOT 4

LOT 5**5****BLAIR'S EMERALD 575M**

BBC575M Mar 29/24 2408422 BW:90lbs WW:660lbs

S A V RENOVATION 6822
BROOKING EMERALD 9179
 BROOKING BEAUTY 6051

S A V RENOWN 3439
COLEMAN DONNA 720
 COLEMAN DONNA 439

S A V RENOWN 3439
 S A V MADAME PRIDE 0151
 BROOKING BANK NOTE 4040
 SOO LINE BEAUTY 1027

RITO 707 OF IDEAL 3407 7075
 S A V BLACKCAP MAY 4136
 GDAR GAME DAY 449
 COLEMAN DONNA 714

BW	CED	WW	YW	MILK	CE
2.4	1.5	68	126	29	*

The Donna 720E donor dam was identified on my KT Ranch tour as a genetic piece we needed to incorporate. Analyze his picture and his dam and you can see the apple doesn't fall far from the tree. Take note that the Donna 720E donor is a full sib to Coleman Glacier.

BLAIR'S. AG

BROOKING EMERALD 9179
 SIRE OF LOT 5



COLEMAN DONNA 720
 DAM OF LOT 5

**LOT 6**

BLAIR'S DEPTH CHARGE 550M

BBC550M Mar 05/24 2397854 BW:97lbs WW:780lbs

S A V RENOVATION 6822
BROOKING EMERALD 9179
 BROOKING BEAUTY 6051

DUFF NAPOLEON 232
BLAIR'S ERICA 265F
 BAR-E-L ERICA 74A

S A V RENOWN 3439
 S A V MADAME PRIDE 0151
 BROOKING BANK NOTE 4040
 SOO LINE BEAUTY 1027

DUFF DISTINCTION 9105
 DUFF EUR 443 MERLE 808
 BAR-E-L NATURAL LAW 52Y
 HF ERICA 339T

BW	CED	WW	YW	MILK	CE
3.4	0	64	115	23	*

I can't say enough about this mating and how well this flush worked. Full sisters were featured in Opportunity Knocks 5.0 and a full brother was collected for Argentina and will breed cows at the ranch this summer. Anytime you can add a herdsire with Erica 74A in the pedigree, give it a serious look. Retaining 1/3 semen interest.

BLAIR'S. AG

Blair's Erica 265F
DAM OF LOT 6



BLAIR'S ERICA 520M
 FULL SIB TO LOT 6



BLAIR'S ERICA 531M
 FULL SIB TO LOT 6



BROOKING EMERALD 9179
 SIRE OF LOT 6

LOT 9**BLAIR'S PRIVATE LAW 506M**

BBC 506M Feb 17/24 2397915 BW: 89lbs WW: 830lbs

DUFF DISTINCTION 9105

DUFF NAPOLEON 232

DUFF EUR 443 MERLE 808

BAR-E-L NATURAL LAW 52Y

BAR-E-L ERICA 74A

HF ERICA 339T

DUFF BASIC INSTINCT 6501

DUFF NL B351 LADY POP 619

DUFF NEW EDITION 6108

DCC NL 652K MERLE 443

S A V BISMARCK 5682

BAR-E-L MAGNOLIA 143K

PEAK DOT FAME 2N

HF ERICA 46P



BW	CED	WW	YW	MILK	CE
1.3	6	53	93	24	**

Take a good look at this full brother to Blair's External Law 266F.

Blair's Private Law 506M is long made, smooth built, excellent calving and high performing. This will be the last Erica 74A x Duff Napoleon son offered through our program.

Retaining 1/3 semen interest.

BLAIR'S. AG**BLAIR'S ERICA 595F**

FULL SIB TO LOTS 8 & 9

**BLAIR'S EXTERNAL LAW 266F**

FULL SIB TO LOTS 8 & 9

**LOT 8****BLAIR'S LAW & ORDER 532M**

BBC 532M Mar 01/24 2397839 BW: 94lbs WW: 825lbs

DUFF DISTINCTION 9105
DUFF NAPOLEON 232
 DUFF EUR 443 MERLE 808

BAR-E-L NATURAL LAW 52Y
BAR-E-L ERICA 74A
 HF ERICA 339T

DUFF BASIC INSTINCT 6501
 DUFF NL B351 LADY POP 619
 DUFF NEW EDITION 6108
 DCC NL 652K MERLE 443

S A V BISMARCK 5682
 BAR-E-L MAGNOLIA 143K
 PEAK DOT FAME 2N
 HF ERICA 46P

BW	CED	WW	YW	MILK	CE
2.9	2	61	103	12	*

We'll take a look here. A full brother to Blair's External Law 266F. Blair's Law & Order 532M has been a favourite since he was a baby. Great nuts, long made, great hip, fantastic mother. Come check him out and you be the judge.

Retaining 1/3 semen interest.

BLAIR'S. AG

LOT 8
 ON PASTURE AS A CALF



DUFF NAPOLEON 232
 SIRE OF LOT 8



BLAIR'S ERICA 267F
 FULL SIB TO LOT 8

LOT 9**9****BLAIR'S RENOVATION 528M**

BBC528M Feb 25/24 2397916 BW:98lbs WW:740lbs

S A V RENOWN 3439

S A V RENOVATION 6822

S A V MADAME PRIDE 0151

RITO 707 OF IDEAL 3407 7075

S A V BLACKCAP MAY 4136

S A V 004 DENSITY 4336

S A V MADAME PRIDE 0075

SOO LINE MOTIVE 9016

SOO LINE ROSE 1019

E A ROSE 918

HF KODIAK 5R

TLA BEAUTY 5R

S A V FINAL ANSWER 0035

E A ROSE 738



BW	CED	WW	YW	MILK	CE
0.7	6	55	102	23	**

A result of embryo's I bought from Brooking Angus to add EA Rose 918 genetics. The Rose 1019 donor and SAV Renovation have been at staple at Brooking and for good reason. An extremely well balanced bull that will make your short list on sale day.

BLAIR'S. AG**SOO LINE ROSE 1019**

DAM OF LOT 7

**SAV RENOVATION 6822**

SIRE OF LOT 7

10 BLAIR'S EXTERNAL LAW 561M

BBC 561M Mar 21/24 2410238 BW: 82lbs WW: 750lbs

DUFF NAPOLEON 232

BLAIR'S EXTERNAL LAW 266F

BAR-E-L ERICA 74A

DUFF DISTINCTION 9105

DUFF EUR 443 MERLE 808

BAR-E-L NATURAL LAW 52Y

HF ERICA 339T

COLEMAN JUNEAU 3296

COLEMAN ERISKAY 6102

COLEMAN ERISKAY 316

COLEMAN JUNEAU 044

COLEMAN DONNA 194

COLEMAN CHARLO 0256

SINCLAIR ERISKAY 2N1 7883

BW	CED	WW	YW	MILK	CE
2	1.5	54	85	21	**

A moderate made sire in a highly maternal pedigree with a great skull design and excellent scrotal. He will catch your fancy on sale day for sure. If you want to add feed efficiency, moderate BW and add the maternal greatness of Erica 74A then mark this one for sure.

BLAIR'S. AG**LOT 10**COLEMAN ERISKAY 6102
DAM OF LOT 14**11 BLAIR'S RS GLACIER 515M**

BBC 515M Feb 21/24 2388096 BW: 90lbs WW: 750lbs

S A V RENOWN 3439

COLEMAN GLACIER 041

COLEMAN DONNA 439

RITO 707 OF IDEAL 3407 7075

S A V BLACKCAP MAY 4136

GDAR GAME DAY 449

COLEMAN DONNA 714

S A V NATIONAL ANTHEM 5740

BLAIR'S BLACKBIRD 7336

BLAIR'S BLACKBIRD 613C

S A V INTERNATIONAL 2020

A C DUKE GIRL 57 AMF

SOO LINE LOCOMOTIVE 1403

O C C BLACKBIRD 7205

BW	CED	WW	YW	MILK	CE
0.9	5	48	86	26	**

This one will get many stars in your catalog. He really brings it all together in terms of power, performance, balance and maternal strength on both sides of the pedigree. Check out the way his neck & head transition out of his shoulder. His dam is a beautiful SAV National Anthem daughter.

BLAIR'S. AG & RUNNING STEADY RANCH**LOT 11**

SIRE

DAM

12 BLAIR'S GLACIER 565M

BBC 565M Mar 24/24 2397846 BW: 91lbs WW: 710lbs

S A V RENOWN 3439

COLEMAN GLACIER 041

COLEMAN DONNA 439

RITO 707 OF IDEAL 3407 7075

S A V BLACKCAP MAY 4136

GDAR GAME DAY 449

COLEMAN DONNA 714

DUFF NAPOLEON 232

BLAIR'S ERICA 265F

BAR-E-L ERICA 74A

DUFF DISTINCTION 9105

DUFF EUR 443 MERLE 808

BAR-E-L NATURAL LAW 52Y

HF ERICA 339T

BW	CED	WW	YW	MILK	CE
1.5	7	60	104	24	**

The mating of an Erica daughter and an SAV Renown son is no accident. We work hard to stack maternal greatness when making breeding decisions. You can expect this rascal to be a female maker while at the same time adding performance to the calf crop.

BLAIR'S. AG**LOT 12**

PAT. SIB

DAM

LOT 13

Big natted, high performing and all in a moderate calving ease package. This one is specifically designed to be the cowboy kind.

BLAIR'S. AG



PM ECHO 8D
MAT. GRAND DAM OF LOT 13

13**BLAIR'S ANSWER 500M**

BBC 500M Feb 08/24 2385493 BW: 83lbs WW: 890lbs

S A V FINAL ANSWER 0035
LFE BEST ANSWER 800H
LFE BA CHINOOK 627F

BAR-E-L NATURAL LAW 52V
BLAIR'S ECHO 541H
HF ECHO 111Y

SITZ TRAVELER 8180
S A V EMULOUS 8145
COLEMAN BRAVO 6318
LFE BA CHINOOK 2183D

S A V BISMARCK 5682
BAR-E-L MAGNOLIA 143K
HF EL TIGRE 28U
HF ECHO 207N



BW	CED	WW	YW	MILK	CE
-0.2	8	55	96	33	***

14**BLAIR'S STEP UP 553M**

BBC 553M Mar 08/24 2390638 BW: 71lbs WW: 700lbs

EZAR SET UP 9178
EZAR STEP UP 1353
EZAR RITA 9093

SANKEYS WATCHMAN 7020 OF H C
JUSTAMERE 8C7020 BLACKCAP 507K
JUSTAMERE 8CS 833C BLACKCAP524

G A R BIG STEP K715
BASIN LUCY 4261
V A R POWER PLAY 7018
DEER VALLEY RITA 6108

SMA WATCHOUT 482
SANKEYS VALEE 324
JUSTAMERE SOUTH DAKOTA 833C
EXAR BLACKCAP 2215



BW	CED	WW	YW	MILK	CE
1.9	4.5	59	109	23	***



A calving ease specialist with a different pedigree for us. The right combination of calving ease and performance. A 71 lb BW with and 817 lbs Adj WW.

BLAIR'S. AG

15

BLAIR'S NATIONAL 537M

BBC 537M Mar 01/24 2397853 BW: 94lbs WW: 840lbs

S A V RENOVATION 6822

BROOKING NATIONAL 0144

SOO LINE ROSE 1019

S A V RENOWN 3439

S A V MADAME PRIDE 0151

SOO LINE MOTIVE 9016

E A ROSE 918

SILVEIRAS STYLE 9303

PFLC BARBARA 102D

BAILEY ACRES BARBARA 2X

GAMBLES HOT ROD

SILVEIRAS ELBA 2520

S A V NET WORTH 4200

BAILEY ACRES BARBARA 3P

BW	CED	WW	YW	MILK	CE
3	3.5	60	107	18	*

Analyze the dam and you can tell why she is a donor for us & JP Cattle. Brooking National has proved himself as a performance sire & I think you will appreciate the masculinity & crest on 537M.

BLAIR'S. AG**LOT 15**

16

BLAIR'S NATIONAL 538M

BBC 538M Mar 01/24 2397842 BW: 99lbs WW: 825lbs

S A V RENOVATION 6822

BROOKING NATIONAL 0144

SOO LINE ROSE 1019

S A V RENOWN 3439

S A V MADAME PRIDE 0151

SOO LINE MOTIVE 9016

E A ROSE 918

DUFF NAPOLEON 232

BLAIR'S ERICA 267F

BAR-E-L ERICA 74A

DUFF DISTINCTION 9105

DUFF EUR 443 MERLE 808

BAR-E-L NATURAL LAW 52Y

HF ERICA 339T

BW	CED	WW	YW	MILK	CE
1.1	5.5	55	95	22	*

A performance pedigree and a performance bull. The Erica 267F donor is knocking it out of the park at Golden Oak Livestock. Get yourself some Erica.

BLAIR'S. AG**LOT 16**

17

BLAIR'S RENOVATION 526M

BBC 528M Feb 23/24 2397913 BW: 95lbs WW: 747lbs

S A V RENOWN 3439

S A V RENOVATION 6822

S A V MADAME PRIDE 0151

RITO 707 OF IDEAL 3407 7075

S A V BLACKCAP MAY 4136

S A V 004 DENSITY 4336

S A V MADAME PRIDE 0075

SOO LINE MOTIVE 9016

SOO LINE ROSE 1019

E A ROSE 918

HF KODIAK 5R

TLA BEAUTY 5R

S A V FINAL ANSWER 0035

E A ROSE 738

BW	CED	WW	YW	MILK	CE
0.7	6	55	102	23	**

BLAIR'S. AG**SIRE OF LOT 17**

LOT 18**18****CCCJ STAESMAN 7M**

CCCJ 7M Feb 25/24 2389352 BW:88lbs WW:750lbs

S A V AMERICA 8018

S A V AMERICAN MADE 0079

S A V EMBLYNETTE 3293

SOO LINE MOTIVE 9016

CCCJ BEAUTY 4B

SIX MILE REAL BEAUTY 803U

S A V PRESIDENT 6847

S A V MADAME PRIDE 0075

S A V 004 DENSITY 4336

S A V EMBLYNETTE 7411

HF KODIAK 5R

TLA BEAUTY 5R

S A V NET WORTH 4200

WAT-CHA STUNNING BEAUTY 5S



BW	CED	WW	YW	MILK	CE
4.1	-4	57	98	22	**

JACKSON CATTLE

SAV American Made 0079
SIRE OF LOTS 20, 24, 25 & 28

This American Made son checks off all the boxes. He is a standout individual and certainly worth a second look. His dam, 4B is a beautiful Motive daughter. A full brother sold in last years sale to Brendon Wagner.

**CCCJ 33L**

FULL BROTHER TO LOT 18

**CCCJ BEAUTY 4B**

DAM OF LOT 18

**LOT 19****19****CCCJ ARSON 1M**

CCCJ 1M Feb 17/24 2389340 BW: 74lbs WW: 770lbs

HF ALCATRAZ 60F

HF ARTILLERY 118K

HF PRIDE 40Z

HF ENTERTAINER 54H

CCCJ KEEPSAKE 5K

CCCJ KEEPSAKE 4H

MAY-WAY BREAKOUT 1310

HF MAYFLOWER 191Z

HF KODIAK 5R

2HR PRIDE 12P

SCHIEFELBEIN SHOWMAN 338

HF ANNIE K 60E

COLEMAN BRAVO 6313

REMITALL WEST KEEPSAKE 7C



BW	CED	WW	YW	MILK	CE
-0.2	6	59	112	34	***

This is the first set of bulls to sell out of HF Artillery and we could not be any happier with the set of calves this bull has left us. We purchased Artillery to be used as our main heifer bull, and he has exceeded all expectations. He is a first calf heifers dream date. A true calving ease specialist. His calves are born light, wean heavy with exceptional muscle, depth of body, soft made, great hair. 1M is a great example of all of this. His dam, 5K is an exceptional young female. Outstanding prospect here.

JACKSON CATTLE**HF ARTILLERY 118K**

SIRE OF LOT 19

**CCCJ 531N**

PAT. SIB TO LOT 19

LOT 20**20 COTTONWOOD JCC ARTILLERY 444M**

RTBG 444M Mar 10/24 2391248 BW:62lbs WW:645lbs

HF ALCATRAZ 60F
HF ARTILLERY 118K
 HF PRIDE 40Z

BC ROBUST 0807
COLEMAN DONNA 1400
 COLEMAN DONNA 4203

MAY-WAY BREAKOUT 1310
 HF MAYFLOWER 191Z
 HF KODIAK 5R
 2HR PRIDE 12P

BC SURVEYOR 680D
 BC 327-8 CP BELLE O-807
 CONNEALY THUNDER
 COLEMAN DONNA 714



BW	CED	WW	YW	MILK	CE
-2.1	10.5	47	88	30	***

You will want to put this bull out with all your heifers. Low birthweight, out of our Artillery bull who has proven himself as a calving ease specialist. Dam's side of 444M's pedigree traces back to the infamous Coleman Donna family.

JACKSON CATTLE & COTTONWOOD

HF ARTILLERY 118K
 SIRE OF LOT 20



CCCJ 531N
 PAT. SIB TO LOT 19

LOT 21

This Mosaic son has held our attention since day one. Lots of muscle and meat on a real sound frame. His 13 year old momma just quietly does a good job each and every year. A real complete individual.

JACKSON CATTLE

PEAK DOT MOSAIC 804G
SIRE OF LOT 21

21 CCCJ MONOPOLY 13M

CCCJ13M Mar 07/24 2389580 BW:80lbs WW:830lbs

ELLINGSON ROUGHRIDER 4202
PEAK DOT MOSAIC 804G
PEAK DOT LADY 38C

TW UPWARD 35X
SMW ROSEBUD 20A
SOUTHLAND ROSEBUD 81T

CONNEALY EARNAN 076E
EA BLACKLASS 8914
BUSH'S EASY DECISION 98
PEAK DOT LADY 626A

SITZ UPWARD 307R
MAR BLACKCAP 5073
TC FREEDOM 104
RONAN R ROSEBUD 5J



BW	CED	WW	YW	MILK	CE
2.2	5	64	114	21	***

22 CCCJ HANDMADE 22M

CCCJ22M Mar 11/24 2389586 BW:98lbs WW:770lbs

S A V AMERICA 8018
S A V AMERICAN MADE 0079
S A V EMBLYNETTE 3293

S A V RENOVATION 6822
CCCJ JEAN 16H
MV F JEAN 8Z

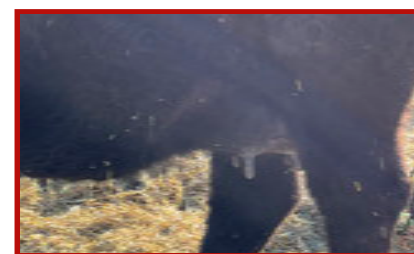
S A V PRESIDENT 6847
S A V MADAME PRIDE 0075
S A V 004 DENSITY 4336
S A V EMBLYNETTE 7411

S A V RENOWN 3439
S A V MADAME PRIDE 0151
HF TIGER 5T DWF
MV F JEAN 93X

BW	CED	WW	YW	MILK	CE
5.8	-6	67	116	20	*

**LOT 22**

This bull's pedigree has all the most prolific sires in the Angus breed, America, President, Renovation, Density, Tiger. He's stout and sound. His flawless Renovation momma is fast tracking herself to replace her mother 8Z who is a cornerstone female in my herd.

JACKSON CATTLE

CCCJ JEAN 16H
DAM OF LOT 22

LOT 23**23****CCCJ SENATOR 4M**

CCCJ 4M Feb 18/24 2389346 BW: 82lbs WW: 800lbs

S A V AMERICA 8018

S A V AMERICAN MADE 0079

S A V EMBLYNETTE 3293

MAR INNOVATION 251

CCCJ PRIDE 12D

MVF PRIDE 4A

S A V PRESIDENT 6847

S A V MADAME PRIDE 0075

S A V 004 DENSITY 4336

S A V EMBLYNETTE 7411

CONNEALY IMPRESSION DMF

MAR FINAL KAHUNA 856

SOUTHLAND THRILLER 83X

MVF PRIDE 302T



BW	CE	WW	YW	MILK	CE
4.2	-3	63	105	21	***

This is a good American Made son with some solid performance behind him. His pedigree reads like a who's who in the Angus breed. Deep sided with lots of muscle and thickness. A full brother sold in the 2025 bull sale to Curts Farms, Odessa. His dam, 12D, is a model angus cow, deep, sound, easy fleshing with a flawless udder.

JACKSON CATTLE**SAV AMERICAN MADE 0079**

SIRE OF LOT 23

**CCCJ 20L**

FULL SIB TO LOT 23

LOT 24

A good quality bull here. Fluid in his movement, deep sided, His full sister is an outstanding young female and is a candidate for the donor pen.

JACKSON CATTLE

ELLINGSON BIG RIVER 0052
SIRE OF LOT 24

24**CCCJ RIVER 15M**

CCCJ 15M Mar 08/24 2389582 BW:90lbs WW:696lbs

ELLINGSON THREE RIVERS 8062 ELLINGSON HOMESTEAD 6030
ELLINGSON BIG RIVER 0052 EA EMBLYNETTE 6279
 EA BLACKCAP 4053 KOU PAL ADVANCE 28
 EA BLACKCAP 7915

NORTHERN VIEW SMW GUSTOV 32 REMITALL H RACHIS 21R
SMW EVENING TINGE 47C ISLA BANK NEONIA 27S
 STRYKER TINGE 344X S A NEUTRON 377
 STRYKER EVENING TINGE 113R

BW	CED	WW	YW	MILK	CE
3.9	-2	59	109	18	*

25**CCCJ MINER 9M**

CCCJ 9M Mar 03/24 2389353 BW:88lbs WW:845lbs

O C C JUNEAU 807J
COLEMAN ROCK 7200
 COLEMAN DONNA 714

CONNEALY DATELINE
SMW PRIME BEAUTY 14A
 SMW PRIME BEAUTY 113W

O C C EMBLAZON 854E
 O C C DIXIE ERICA 903E
 CONNEALY ONWARD
 COLEMAN DONNA 386

D H D TRAVELER 6807
 EILA EILA OF CONANGA
 MVF FREIGHTLINER 6307
 ISLA BANK PRIME BEAUTY 2R

BW	CED	WW	YW	MILK	CE
2.6	5	66	115	19	**

**LOT 25**

This is a big strong Coleman Rock son. Lots of performance, should sire those calves with a little extra frame and performance. His Mom is still in the herd at 13 years of age.

JACKSON CATTLE

COLEMAN ROCK
SIRE OF LOT 25

SIRE OF LOT 26

A good solid bull here, just kinda puts it all together in an attractive package.

JACKSON CATTLE

26**CCCJ PATRIOT 44M**

CCCJ 44M Apr 09/24 2390054 BW:70lbs TWIN WW:690lbs

S A V AMERICA 8018
S A V AMERICAN MADE 0079
 S A V EMBLYNETTE 3293

STRYKER COAL 141W
SMW EVENING TINGE 28B
 STRYKER TINGE 344X

S A V PRESIDENT 6847
 S A V MADAME PRIDE 0075
 S A V 004 DENSITY 4336
 S A V EMBLYNETTE 7411

K C F BENNET COALITION SCC
 STRYKER ERICA 141S
 S A NEUTRON 377
 STRYKER EVENING TINGE 113R



BW	CED	WW	YW	MILK	CE
3.9	-1.5	53	95	20	***

27**CCCJ MANMADE 19M**

CCCJ 19M Mar 10/24 2389583 BW:86lbs WW:830lbs

ELLINGSON ROUGHRIDER 4202
PEAK DOT MOSAIC 804G
 PEAK DOT LADY 38C

MAR INNOVATION 251
CCCJ ROSEBUD 15D
 SOO LINE ROSEBUD 0013

CONNEALY EARNAN 076E
 EA BLACKLASS 8914
 BUSH'S EASY DECISION 98
 PEAK DOT LADY 626A

CONNEALY IMPRESSION
 MAR FINAL KAHUNA 856
 HF KODIAK 5R
 SOO LINE ROSEBUD 8210

BW	CED	WW	YW	MILK	CE
3.1	0	66	116	21	*



Another Mosaic son with a little extra frame. Mother is an attractive, exceptionally sound Innovation daughter, tracing back to my foundation female 13X. A really strong maternal side to this pedigree.

JACKSON CATTLE

SIRE OF LOT 27

Black Angus

YEARLING BULLS

Lots **28-30**

The yearling Angus numbers may be small in this years Pursuit of Excellence bull sale but we are excited to have them represent many things within the breed. Calving ease, performance, maternal strength, the traits gained when crossing the blacks with the reds. The bulls are developed with longevity in mind and because of their earlier birthdays on the calendar we felt it was a better fit to sell them as yearlings than hold them over as 2 year olds.



LOT 28**28****WBC INCENTIVE 31N**

WBC 31N Jan 21/25 APPLIED FOR BW: 71lbs WW: 790lbs

SITZ INCENTIVE 704H

KR INCENTIVE 3052

KR MISS BELL 8036

SITZ STELLAR 726D

SITZ BARBARAMERE NELL 53R

TEF OUTSIDE 514

KR MISS BELL 5443

W SUNRISE ELECTRIC AVENUE 139J HF ELECTRIC AVENUE 136D

W SUNRISE BLOSSOM 255L

W SUNRISE BLOSSOM 732E

BROOKING ANNIE K 5106

SAV HARVESTOR 0338

REMITALL WEST BLOSSOM 26B



	BW	CE	WW	YW	MILK	CE
EST.	3	3	66	125	24	***

We're not big in Angus numbers at Westbrook but the few we have been able to work with are holding their purpose of bringing in new cow families through upgrading on the Simmental side but you don't always get females, so we're proud to have our first Angus bulls to sell. 31N came in dam from the W Sunrise program. His dam is moderate framed, milky and is a daughter of Tanner's favourite 732E cow. His sire came up from the Krebs program to be a calving ease specialist for the Golden Oak and Bar H programs with W Sunrise being able to secure a limited semen pack. 31N will be a true heifer bull with a beautiful cow backing him.

WESTBROOK VENTURES**W SUNRISE BLOSSOM 255L**

DAM OF LOT 28

**KR INCENTIVE 3052**

SIRE OF LOT 28

**LOT 29****29****WBC GLACIER 110M**

WBC 110M Jan 21/25 APPLIED FOR BW: 94lbs WW: 846lbs

SAV RENOWN 3439
COLEMAN GLACIER 041
 COLEMAN DONNA 439

RITA 707 OF IDEAL 3407
 SAV BLACKCAP MAY 4136
 GDAR GAME DAY 449
 COLEMAN DONNA 714

SAV RAINFALL 6846
SAV MADAME PRIDE 0620
 SAV MADAME PRIDE 3304

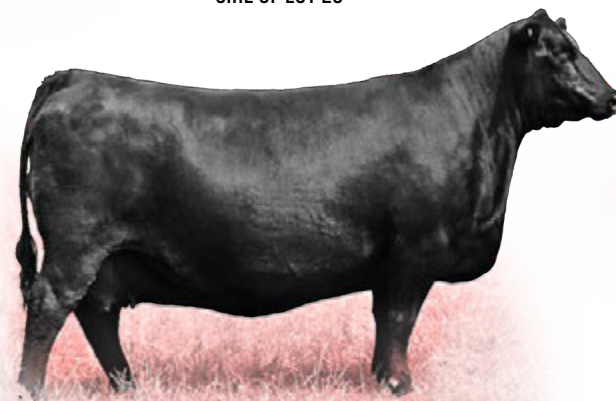
COLEMAN CHARLO 0256
 SAV BLACKCAP MAY 4136
 SAV RESOURCE 1441
 SAV MADAME PRIDE 0412

	BW	CED	WW	YW	MILK	CE
EST.	2	5	70	125	21	*

110M comes to us from an embryo purchased from the KT program. His dam is one of the best SAV cows to now call Canada home. Glacier brings power and eye appeal to the table. 110M carries both Madame Pride and Donna cow families crossed with a double shot of the great Blackcap May 4136. The females this bull is going to produce will be ones that will easily fill the replacement pen!

WESTBROOK VENTURES

COLEMAN GLACIER 041
 SIRE OF LOT 29



SAV Madame Pride 0620
 DAM OF LOT 29

LOT 30

30 DOUBLE B FIGHT NIGHT 507

BAX7N Jan 21/25 2443798 BW:75lbs WW:729lbs

DUFF NAPOLEON 232

DUFF-JC 4REAL 16250

DUFF AMIGO 927K JUANADA 071

RED SOO LINE POWER EYE 161X

RED DOUBLE B MISS PRISCILLA 1E

RED BLAIRS PRICILLA 44Z

DUFF DISTINCTION 9105

DUFF EUR 443 MERLE 808

DUFF AMIGO 815

O C C JUANADA 927K

RED COCKBURN RIBEYE 308U

RED TR LYNN 301R

RED RINGSTEAD KARGO 215U

RED BRYLOR PRISCILLA 67W



BW	CED	WW	YW	MILK	CE
-0.4	8	50	85	20	***

Our hunt to inject elite, proven Angus genetics into our red program brings you Double B Fight Night 507. Sired by Duff-JC 4Real out of a full sister to Semex Sire Bullseye 1B, who stood alongside Priscilla 44Z when they made the top 10 at Agribition, this is the opportunity to inject some of the nation's most elite cow families on both sides of his pedigree. 507's ability to merge his kind of power, stoutness, and body with a heifer safe 75 lb BW is truly impressive. Daughters and sons of this incredibly high-quality future herdsire should be extremely valuable, regardless of where they're asked to serve.

Retaining the right to in-herd use semen.

DOUBLE B ANGUS



LOT 30



RED DOUBLE B BULLSEYE 1B

FULL SIB TO DAM OF LOT 30



Lots

31-57

Red Angus

TWO-YEAR OLD BULLS

It's important to note that not all two year bulls are not created under the same conditions. We are careful to develop our bulls in a manner that ensures their longevity. Our bulls spend the first winter on a high roughage textured ration and free choice hay to ensure they are grown out without getting over conditioned and then they go to grass for the entire summer without any supplementation and are further developed by grazing on high quality grass. In early Sept they are removed from pasture and begin to transition to a hand fed balanced ration along with free choice hay. The two year old sale bulls go through (5) rigorous culls before they make the sale list that includes phenotype, foot quality, performance & scrotal development. The goal is to ensure that by sale time the bulls are in ideal breeding condition and exhibit natural muscle expression so buyers can see the genetic potential of the bulls.

LOT 31

31 RED DOUBLE B WOODSTOCK 403

BAX 3M Jan 21/24 2384657 BW:85lbs WW:680lbs

RED DUFF CORNERSTONE 16136
RED DUFF RED WOOD 1941
 DUFF DIXIE ERICA 144 1532

RED KJHT POWER TAKE OFF
RED DOUBLE B PRISCILLA 017
 RED BLAIRS PRICILLA 44Z

RED BLAIR'S BINGO 581B
 DUFF JUANADA 927K 246
 RED WCR HAMMELECH 812Z
 DUFF BI 505 DIXIE ERICA 144

RED 500 LINE POWER EYE 161X
 RED SRA PAINTBUCKET
 RED RINGSTEAD KARGO 215U
 RED BRYLOR PRISCILLA 67W

BW	CED	WW	YW	MILK	CE
2.5	1	36	64	18	**

Bringing the absolute best of our program is a must when selecting bulls for the Pursuit of Excellence, and we felt there was no better place to kick things off than with Woodstock 403. As stout, big-bodied, and burly as you can make one, this dark cherry powerhouse by Duff Redwood has been a standout since birth. His maternal sister, Priscilla 305, was arguably the best animal ever to wear the BAX tattoo, being named the Champion Red Angus Female in the First Lady Classic at Agribition. This is your chance to inject some of our most sought-after genetics. The opportunities to blend power with elite cow families are endless with Lot 31.

Retaining the right to in-herd use semen.

DOUBLE B ANGUS



RED DOUBLE B PRISCILLA 305

MAT. SIB TO LOT 31



LOT 31



32 RED DOUBLE B BEAT BOX 417

BAX17M Feb 17/24 2390241 BW:89lbs WW:705lbs

RED SIGM WIDELOAD 920W
RED MANN RED BOX 55C
 RED PELTON MISS AJA 0839U

RED WHEEL GANGSTER 31Y
RED BLAIR'S LARKABA 42A
 RED BLAIRS LARKABA 101Y

RED UBAR HIGH CAPACITY 224
 RED MEADO-WEST PERSUASION
 RED 5L NORSEMAN KING 2291
 RED PELTONS MISS IDA 0347R

RED SVR GANGSTER 145
 BLACK WHEEL COUNTESS 69S
 RINGSTEAD DAWSON 7177
 RED BLAIR'S LARKABA 171



BW	CED	WW	YW	MILK	CE
2.8	0	39	69	30	**

Certain pedigrees are truly the no-miss kind, and the Red Box x 42A mating has routinely stamped itself with that status at our place. Introducing Beat Box 417 – incredible bodied, huge backed and pinned, and awesome built with a captivating herd bull presence. Larkaba 42A's longstanding history of generating incredible bulls and females has made her one of the most profitable donors in our arsenal, and we're confident 417 may be one of her very best.

Retaining the right to in-herd use semen.

DOUBLE B ANGUS



RED DOUBLE B LARKABA 216
 \$34,000 FULL SIB



LOT 32



RED DOUBLE B LARKABA 539
 \$25,000 MAT. SIB

LOT 33

33 RED DOUBLE B COUNTDOWN 408

BAX8M Feb 04/24 2384665 BW:88lbs WW:676lbs

RED MANN RED BOX 55C
RED DOUBLE B RED WATCH 129
 RED BLAIRS PRICILLA 44Z

RED DOUBLE B 6M AUTOGRAPH 2D
RED DOUBLE B ALICE 011
 RED SIX MILE ALICE 131D

RED SLGN WIDELOAD 920W
 RED PELTON MISS AJA 0839D
 RED RINGSTEAD KARGO 215U
 RED BRYLOR PRISCILLA 67W

RED SIX MILE SIGNATURE 295B
 RED BLAIR'S LARKABA 42A
 RED SIX MILE TAURUS 519A
 RED TER-RON ALICE 119B



BW	CED	WW	YW	MILK	CE
3.7	-3	39	68	21	**

Without a doubt, Red Watch will go down in history as one of our program's biggest triumphs. After an incredible show career as a multiple-time Canadian Western Agribition Champion, National Champion, and CN Beef Supreme Top 10 Finalist, we patiently awaited his progeny – and his sire group blew us out of the water. Countdown 408 patterns him extremely well, being smooth-made, incredible bodied, and perfectly built. Daughters out of this cow family have been featured sale lots and competitive show heifers for some of the world's most astute cattlemen.

Retaining the right to in-herd use semen.

DOUBLE B ANGUS



RED DOUBLE B ALICE 426
 \$15,000 3/4 SIB



RED DOUBLE B ALICE 514
 \$25,000 GRANDDAUGHTER OF 131D



RED DOUBLE B ALICE 402
 011 GRANDDAUGHTER

**LOT 34****34 RED DOUBLE B NIGHT WATCH 431**

BAX 31M Mar 16/24 2390265 BW:77lbs WW:668lbs

RED MANN RED BOX 55C
RED DOUBLE B RED WATCH 129
 RED BLAIRS PRICILLA 44Z

RED WHEEL GANGSTER 31V
RED BLAIR'S LARKABA 42A
 RED BLAIRS LARKABA 101V

RED SLGN WIDELOAD 920W
 RED PELTON MISS AJA 0839U
 RED RINGSTEAD KARGO 215U
 RED BRYLOR PRISCILLA 67V

RED SVR GANGSTER 14S
 BLACK WHEEL COUNTESS 69S
 RINGSTEAD DAWSON 717T
 RED BLAIR'S LARKABA 17T

BW	CED	WW	YW	MILK	CE
1.9	3	38	66	23	***

Combining two of our most prolific cow families into one pedigree, Night Watch 431 is exactly what we had in mind when choosing this mating. A full brother has already hung banners as a CWA division champion and has developed into an incredible young breeding piece for our partners, Twin Creek Stock Farm. Insanely stout made, dark cherry-haired, and awesome built with a captivating look and heifer safe BW - we think the generating potential of Lot 34 is endless. Both sons and daughters should be incredibly high-quality.

Retaining the right to in-herd use semen.

DOUBLE B ANGUS

Red Double B Red Watch 129
SIRE OF LOTS 34-37



RED DOUBLE B BAYWATCH 433
 FULL SIB TO LOT 34



RED DOUBLE B LARKABA 539
 \$25,000 MAT. SIB

LOT 35**35****RED DOUBLE B ROLEX 411**

BAX11M Feb 11/24 2384666 BW:80lbs WW:746lbs

RED MANN RED BOX 55C
RED DOUBLE B RED WATCH 129
 RED BLAIRS PRICILLA 44Z

RED SIX MILE BRUNSON 357B
RED WRIGHTS 357B TAFFETA 9F
 SIX MILE TAFFETA 544A

RED SLGN WIDELOAD 920W
 RED PELTON MISS AJA 0839U
 RED RINGSTEAD KARGO 215U
 RED BRYLOR PRISCILLA 67W

RED MRLA NEW ERA 87X
 RED SIX MILE MARTA 300Y
 STEWART PANTHER 19X
 RED YY TAFFETA 306N

BW	CED	WW	YW	MILK	CE
1.9	2	48	83	20	***

Another Red Watch son that fits the mould of his paternal siblings. Rolex 411 has the rugged herd bull presence in a smooth-made, easy-fleshing, good-built package. His dam, Taffeta 9F, is easy to find in every pasture check with her picture-perfect udder, power, and functional build. No better time or place to capitalize on a stacked pedigree!

DOUBLE B ANGUS**36****RED DOUBLE B REAL TIME 427**

BAX27M Mar 06/24 2384669 BW:85lbs WW:785lbs

RED MANN RED BOX 55C
RED DOUBLE B RED WATCH 129
 RED BLAIRS PRICILLA 44Z

RED U-2 RENOWN 193C
RED BLAIR'S DARLINE 56G
 RED TOWAW DARLINE 15R

RED SLGN WIDELOAD 920W
 RED PELTON MISS AJA 0839U
 RED RINGSTEAD KARGO 215U
 RED BRYLOR PRISCILLA 67W

RED U-2 RECKONING 149A
 RED U-2 ENVIOUS 147X
 RED SVR TALLY 13M
 RED MOUNTAIN ASH DARLINE 6K

BW	CED	WW	YW	MILK	CE
2.9	0	60	95	16	**

Dark cherry red with a stacked pedigree – come on now! Lot 36's dam is a gorgeous uddered, big-bodied, awesome-built donor of ours, sired by Renown, and has generated incredible progeny sold to Compass Ranch and RK Cattle Co. We think Real Time 427's maternal power and balanced, smooth-made phenotype will be an asset for any program.

DOUBLE B ANGUS**37****RED DOUBLE B WATCH ME 414**

BAX14M Feb 14/24 2384667 BW:65lbs WW:609lbs

RED MANN RED BOX 55C
RED DOUBLE B RED WATCH 129
 RED BLAIRS PRICILLA 44Z

RED DOUBLE B NASHVILLE 2E
RED DOUBLE B MONIQUE 009
 RED BLAIR'S MONIQUE 571E

RED SLGN WIDELOAD 920W
 RED PELTON MISS AJA 0839U
 RED RINGSTEAD KARGO 215U
 RED BRYLOR PRISCILLA 67W

RED DAMAR DOCTOR C501
 RED BLAIR'S LARKABA 42A
 RED U-2 RENOWN 193C
 RED BLAIR'S MONIQUE 175A

BW	CED	WW	YW	MILK	CE
-0.2	8	33	58	17	***

Calving ease option sired by Red Watch! Backed by the Monique cow family that raised the \$46,000 high-selling Red Angus Female and CWA division winner in 2024 to Blairs. Ag, this combination of a functional phenotype with a proven pedigree is elite. Progeny from 14M should have the genetic lineage and balanced look to thrive in any facet of the industry.

DOUBLE B ANGUS**\$46,000 MAT. SIB TO DAM OF LOT 37**

RED BLAIR'S DARLINE 56G
 DAM OF LOT 36

MAT. GRANDDAM

LOT 38

Larkaba 42A's track record is truly unparalleled at our place, routinely generating highly sought-after herd bulls and donor females across the globe. Saying that, we knew we needed to retain a daughter to fill her shoes, and we're confident Larkaba 9010 has done just that. With a maternal brother leading off the red division last year and numerous sisters in our replacement pen, Resolution 405 deserves your attention come sale day. He's got an incredible look, plenty of shape, and an awesome hip and hind leg with a dark cherry haircoat. Get in on the ground floor of a young donor you'll hear a lot about in the next few years with this HD son.

**DOUBLE B ANGUS****38 RED DOUBLE B RESOLUTION 405**

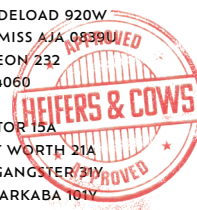
BAX 5M Jan 31/24 2377830 BW:84lbs WW:658lbs

RED MANN RED BOX 55C
RED DUFF HD 2046
 RED DUFF CITA 4060 15522

RED DKF RAZOR 55C
RED DOUBLE B LARKABA 9010
 RED BLAIR'S LARKABA 42A

RED SLGN WIDELOAD 920W
 RED PELTON MISS AJA 0839U
 DUFF NAPOLEON 232
 RED GT CITA 4060

DKF ELIMINATOR 15A
 DKF MISS NET WORTH 21A
 RED WHEEL GANGSTER 31Y
 RED BLAIRS LARKABA 101Y



BW	CED	WW	YW	MILK	CE
3.1	-2	33	62	28	**

39 RED DOUBLE B LIMITED EDITION 423

BAX 23M Feb 21/24 2390298 BW:97lbs WW:780lbs

RED DAMAR POWER EYE C510
RED TWG RED EYE SPECIAL 301F
 RED TWG ELTHEA 301D

RED MANN RED BOX 55C
RED DOUBLE B LARKABA 216
 RED BLAIR'S LARKABA 42A

RED 500 LINE POWER EYE 161X
 RED DAMAR BALLET X222
 RED RINGSTEAD KARGO 215U
 RED DAMAR ELTHEA X301

RED SLGN WIDELOAD 920W
 RED PELTON MISS AJA 0839U
 RED WHEEL GANGSTER 31Y
 RED BLAIRS LARKABA 101Y

BW	CED	WW	YW	MILK	CE
3.9	-2	45	74	25	*

LOT 39

A few years ago, we sold a Red Box x 42A daughter built like a mini grizzly bear, knowing we needed to flush her a few times before she made the trip to her new home in Mexico. The mating by Red Eye Special is exactly what we had in mind. 423 is incredibly long-bodied, stout made, and burly with a neat look and dark cherry haircoat. A full sister highlighted our OK 6.0 offering in December. Proven cow families up for grabs!

DOUBLE B ANGUS

RED DOUBLE B LARKABA 216
 \$34,000 DAM OF LOT 39



RED DOUBLE B LARKABA 534
 \$11,000 FULL SIB TO LOT 39

LOT 40**40****RED DOUBLE B URGENT 409**

BAX9M Feb 09/24 2384659 BW:72lbs WW:671lbs

RED U-2 FOREIGNER 413B
RED U2 URGENT 126
 RED U-2 ENVIOUS 147X

U2 T.K.O.254Z
 RED U-2 ANEXA 8026U
 RED U-2 DYNAMO 7021T
 RED U-2 ENVIOUS 216M

RED DUFF RED WOOD 1941
RED DOUBLE B PRISCILLA 214
 RED DOUBLE B MISS PRISCILLA 1E

RED DUFF CORNERSTONE 16136
 DUFF DIXIE ERICA 144 1532
 RED SOO LINE POWER EYE 161X
 RED BLAIRS PRICILLA 44Z

BW	CED	WW	YW	MILK	CE
1.5	2	53	86	21	***

Calving Ease Deluxe! A few years ago, we purchased Red U2 Urgent 126 for his incredible foot shape, fleshing ability, and calving ease. No doubt, his sons have inherited those same attributes. 409 is a moderate, awesome-bodied, stout-made individual with a perfect foot and 72 lb birthweight. Sound, functional, stout heifer bulls never go out of style - keep Lot 40 in mind come sale day.

DOUBLE B ANGUS**41****RED DOUBLE B CLARITY 421**

BAX21M Feb 19/24 2384668 BW:88lbs WW:695lbs

RED MANN RED BOX 55C
RED DUFF HD 2046
 RED DUFF CITA 4060 15522

RED SLGN WIDELOAD 920W
 RED PELTON MISS AJA 0839U
 DUFF NAPOLEON 232
 RED GT CITA 4060

RED MOOSE CREEK WESTON 23B
RED RAINBOW LARK 9E
 RED STEWART LARK 6025

RED SVR GANGSTER 44X
 RED MOOSE CREEK LANA 108Z
 RED LAZY MC SMASH 41N
 RED SVR MISS LARK 100P

BW	CED	WW	YW	MILK	CE
3.3	-3	43	70	25	**

A son of the 2018 National Champion Red Angus Female, Red Rainbow Lark 9E. If you've followed our Opportunity Knocks heifers the last few years, you'll know these 9E daughters have been standouts every year, selling as featured lots to astute breeders across the US and Mexico. This is your chance to inject the same genetic merit sired by the now deceased Duff HD.

DOUBLE B ANGUS**LOT 41****MAT. GRANDDAM OF LOT 42****42****RED DOUBLE B WALK OUT 438**

BAX38M Apr 14/24 2384674 BW:75lbs WW:652lbs

RED U-2 FOREIGNER 413B
RED U2 URGENT 126
 RED U-2 ENVIOUS 147X

U2 T.K.O.254Z
 RED U-2 ANEXA 8026U
 RED U-2 DYNAMO 7021T
 RED U-2 ENVIOUS 216M

RED SOO LINE POWER EYE 161X
RED DOUBLE B PRISCILLA 9011
 RED BLAIRS PRICILLA 44Z

RED COCKBURN RIBEYE 308U
 RED TR LYNN 301R
 RED RINGSTEAD KARGO 215U
 RED BRYLOR PRISCILLA 67W

BW	CED	WW	YW	MILK	CE
0.7	5	64	102	24	***

Another heifer safe calving ease option sired by Urgent! 348 is a moderate, big ribbed, awesome footed bull stemming from the iconic Priscilla 44Z donor, whose left a legacy in the breed and industry as a whole

DOUBLE B ANGUS



43

RED JCC SMASH 46M

LEVI 46M Apr 13/24 2390043 BW:70lbs WW:645lbs

RED DUFF RED BLOOD 18114
RED DUFF SMASH 2145
 RED DUFF SMASH 1175 18402

RED DKF RAZOR 55C
RED JCC MS RUBA 25F
 RED JCC MS RUBA 8W

RED ROJAS RIOJA 6052
 DUFF JUANADA 927K 15124
 RED LAZY MC CC DETOUR 2W
 RED EGGEN SMASH MISS 1175

DKF ELIMINATOR 15A
 DKF MISS NET WORTH 21A
 RED TER-RON PROWLER 833T
 RED JCC MS RUBA 17P

BW	CED	WW	YW	MILK	CE
0.2	5	42	71	28	***

Another heifer bull candidate here. Out of the Duff Smash bull, who has certainly left his mark on the Blair's . Ag program. His dam Ruba 25F is part of our donor program, and a female that we think very highly of.

JACKSON CATTLE**Internet Bidding Available**

For more information call:

Mark Shologan 780-699-5082 or Purebred Team 780-991-3025

LOT 44

A nicely made red bull that should work on a set of heifers. He's built for calving ease out of a first calf heifer.

JACKSON CATTLE

44**RED JCC URGE 21M**

LEVI 21M Mar 10/24 2392584 BW:62lbs WW:700lbs

RED U-2 FOREIGNER 413B

RED U2 URGENT 12G

RED U-2 ENVIOUS 147X

RED COCKBURN ASSASSIN 624D

RED WRAZ 711E PRINCESS 159K

RED WRAZ PRINCESS 711E

U2 T.K.O.254Z

RED U-2 ANEXA 8026U

RED U-2 DYNAMO 7021T

RED U-2 ENVIOUS 216M

RED PIE SPECIALIST 430

RED COCKBURN CORA 254Z

RED DMM GLESBAR BARNDANCE 35X

RED JLL PRINCESS 78C

BW	CED	WW	YW	MILK	CE
0.1	5	50	83	25	***

45**RED JCC URGE 8M**

LEVI 8M Feb 26/24 2392585 BW:83lbs WW:795lbs

RED U-2 FOREIGNER 413B

RED U2 URGENT 12G

RED U-2 ENVIOUS 147X

RED ACC NOZEKA81G

RED WRAZ CHARITY 35K

RED WRAZ CHARITY 1921G

U2 T.K.O.254Z

RED U-2 ANEXA 8026U

RED U-2 DYNAMO 7021T

RED U-2 ENVIOUS 216M

ACC NOZEKA 27C

RED ACC TIBBIE 98B

RED TER-RON STEEL 103D

RED BRYLOR SEQ CHARITY 100P

BW	CED	WW	YW	MILK	CE
3.5	-1	55	92	23	**



Here is a real loose made bull. Stands on a bit of a larger frame, should add some size and scale to your calf crop. Out of a first calf heifer, so she did a good job for her first stab at motherhood.

JACKSON CATTLE

LOT 45

**LOT 46****46 RED BLAIR'S STEALTH 159M**

BBC 159M Apr 06/24 2397845 BW:93lbs WW:710lbs

PEAK DOT UNANIMOUS 586B
RED SIX MILE STEALTH 269F
 RED SIX MILE MISS LARK 855A

VISION UNANIMOUS 1418
 HEROINE OF PEAK DOT 962U
 RED SIX MILE RUGER 221X
 RED SVR MISS LARK 100P

RED MANN RED BOX 55C
RED WHEEL ANNIE OAKLEY 57J
 RED WHEEL ANNIE OAKLEY 8B

RED SLGN WIDELOAD 920W
 RED PELTON MISS AJA 0839U
 RED WHEEL N DEAL 143Y
 RED WHEEL ANN 106X

BW	CED	WW	YW	MILK	CE
2.5	-0.5	48	78	25	*

A couple years ago, we went looking for another red donor to add to our program and a stop at Wheelers Stock Farm proved to be very valuable. The Annie Oakley 57J female hit me hard and I was happy to be able partner on a 50% interest with Wheelers. You will see many sons & daughters out of both our programs in the years to come. If you want performance and that dark colour, get your marker out!

BLAIR'S. AG

Red Wheel Annie Oakley 57J
DAM OF LOT 46

LOT 47**47 RED BLAIR'S CARLOS BLIND SPOT 141M**

BBC141M Mar 29/24 2398768 BW:94lbs WW:760lbs

RED KJHT POWER TAKE OFF
RED BLAIR'S BLIND SPOT 558H
 RED BAR-E-L KASSIE 129B

RED MANN RED BOX 55C
RED BLAIR'S JESSIE 128J
 RED SSS JESSIE 261Z

RED SOO LINE POWER EYE 161X
 RED SRA PAINTBUCKET
 RED BAR-E-L AB MAGIC MIKE 189Z
 RED BAR-E-L KASSIE 117X

RED SLGN WIDELOAD 920W
 RED PELTON MISS AJA 0839U
 RED SSS SOLDIER 365W
 RED SSS JESSIE 654X

BW	CED	WW	YW	MILK	CE
3.2	-4	45	75	24	*

A full brother's to lot 48 and the consistency shines through. In his brothers footnote I mentioned their dam BUT we shall not forget about the grand dam Red Bar- E-L Kassie 129K who was Champion Female at the Denver National Western Stock Show.

BLAIR'S. AG & CARLOS OJEA

RED SSS JESSIE 261Z
 MAT. GRANDDAM OF LOT 47



RED BAR-E-L KASSIE 129B
 PAT. GRANDDAM OF LOT 47

**LOT 48****48 RED BLAIR'S CARLOS BLIND SPOT 140M**

BBC 140M Mar 28/24 2398767 BW: 94lbs WW: 740lbs

RED KJHT POWER TAKE OFF
RED BLAIR'S BLIND SPOT 558H
 RED BAR-E-L KASSIE 129B

RED MANN RED BOX 55C
RED BLAIR'S JESSIE 128J
 RED SSS JESSIE 261Z

RED SOO LINE POWER EYE 161X
 RED SRA PAINTBUCKET
 RED BAR-E-L AB MAGIC MIKE 189Z
 RED BAR-E-L KASSIE 117X

RED SLGN WIDELOAD 920W
 RED PELTON MISS AJA 0839U
 RED SSS SOLDIER 365W
 RED SSS JESSIE 654X

BW	CED	WW	YW	MILK	CE
3.2	-4	45	75	24	*

The true test of a herd bull is his dam and you can decide on the value his mother brings to the table. Take note that the paternal grand sire KJHT Power Take Off was Reserve Champion Bull at the National Western Stock Show in Denver. Lot 47.

BLAIR'S. AG & CARLOS OJEA

RED BLAIR'S JESSIE 128J
 DAM OF LOT 48



RED BLAIR'S BLIND SPOT 558H
 SIRE OF LOT 48

**LOT 49****49****RED BLAIR'S STEALTH 121M**

BBC121M Mar 07/24 2397857 BW:97lbs WW:760lbs

PEAK DOT UNANIMOUS 586B
RED SIX MILE STEALTH 269F
 RED SIX MILE MISS LARK 855A

VISION UNANIMOUS 1418
 HEROINE OF PEAK DOT 962U
 RED SIX MILE RUGER 221X
 RED SVR MISS LARK 100P

RED SILVEIRAS MISSION NEXUS
RED DAMAR OH ME BABY D031
 RED DAMAR OH BABY W168

RED LJC MISSION STATEMENT P27
 RED SILVEIRAS DAORV 8399
 RED FINE LINE MULBERRY 26P
 RED T-S OLIVIA 706P

BW	CE	WW	YW	MILK	CE
1.9	3	39	63	21	*

Red Blair's Stealth 121M is the heaviest WW of his flush brothers. He is super dark in colour and came in with an adj WW of 801 lbs. Check out length of body. This is one that will add the performance that the market so badly wants.

BLAIR'S. AG

RED SIX MILE STEALTH 269F
 SIRE OF LOT 49

LOT 50

The light BW calf out of the flush but came off grass with a strong Adj WW 853. Four full brothers sell.

BLAIR'S. AG

LOT 46
FULL SIB TO LOT 50

50 RED BLAIR'S STEALTH 147M

BBC 147M Apr 01/24 2397837 BW: 87lbs WW: 715lbs

PEAK DOT UNANIMOUS 586B
RED SIX MILE STEALTH 269F
RED SIX MILE MISS LARK 855A

VISION UNANIMOUS 1418
HEROINE OF PEAK DOT 962U
RED SIX MILE RUGER 221X
RED SVR MISS LARK 100P

RED MANN RED BOX 55C
RED WHEEL ANNIE OAKLEY 57J
RED WHEEL ANNIE OAKLEY 8B

RED SLGN WIDELOAD 920W
RED PELTON MISS AJA 0839U
RED WHEEL N DEAL 143Y
RED WHEEL ANN 106X

BW	CED	WW	YW	MILK	CE
2.5	-0.5	48	78	25	*

51 RED BLAIR'S TOWNSHIP 137M

BBC 137M Mar 27/24 2397861 BW: 96lbs WW: 640lbs

RED MRLA RESOURCE 137E
RED U2 TOWNSHIP 17G
RED U-2 BEAUTY 113Z

MRLA RELOAD 56C
MRLA MISS 4422B
RED U-2 MAMA'S BOY 167X
RED U-2 BEAUTY 48X

RED FINE LINE MULBERRY 26P
RED BRYLOR 140M VIDALIA 24Y
RED TOP RUNG BOOMER 43U

RED COMPASS MULBERRY 449M
RED DUS FAYETTE 8G
RED SSS BOOMER 803B
RED FABULOUS FAYET 4R

BW	CED	WW	YW	MILK	CE
3.6	-2	43	77	21	*



I think this picture says it all. He is long made, strong topped, big hiped, big nutted, dark red and soft haired. His full sister sold in our previous Opportunity Knocks 6.0 sale to Quill Lake Farming.



RED U2 TOWNSHIP 17G
SIRE OF LOT 51



BBC 149M
FULL SIB TO LOT 51

BLAIR'S. AG**LOT 51**

SIRE OF LOT 52



We used Red Six Mile Stealth on some ET matings to add balance, performance and that dark red colour.

BLAIR'S. AG

52 RED BLAIR'S STEALTH 115M

BBC 115M Mar 02/24 2397851 BW:96lbs WW:750lbs

PEAK DOT UNANIMOUS 586B
RED SIX MILE STEALTH 269F
RED SIX MILE MISS LARK 855A

VISION UNANIMOUS 1418
HEROINE OF PEAK DOT 962U
RED SIX MILE RUGER 221X
RED SVR MISS LARK 100P

RED SILVEIRAS MISSION NEXUS
RED DAMAR OH ME BABY D031
RED DAMAR OH BABY W168

RED LJC MISSION STATEMENT P27
RED SILVEIRAS DAORY 8399
RED FINE LINE MULBERRY 26P
RED T-S OLIVIA 706P

BW	CED	WW	YW	MILK	CE
1.9	3	39	63	21	*

53 RED BLAIR'S SMASH 127M

BBC 127M Mar 13/24 2390632 BW:92lbs WW:939lbs

RED DUFF RED BLOOD 18114
RED DUFF SMASH 2145
RED DUFF SMASH 1175 18402

RED ROJAS RIOJA 6052
DUFF JUANADA 927K 15124
RED LAZY MC CO DETOUR 2W
RED EGGEN SMASH MISS 1175

RED STRA RELENTLESS
RED COCKBURN CORA 1100
RED COCKBURN CORA 254Z

RED BIEBER DRIVEN C540
RED STRA CHEREBAL 305
RED LAZY MC HUSTLE 181
RED WILBAR CORA 443P

BW	CED	WW	YW	MILK	CE
0.6	4	58	94	35	**



SIRE OF LOT 53

This guy was impressive for performance since he went to grass as a calf. He kept it up all summer and weaned off with an adj. WW of 939 lbs. He is an example of how Duff Smash 2145 offspring perform.

BLAIR'S. AG

SIRE OF LOT 54

Another highly maternal, dark red performance bull with great scrotal. A member of a very strong flush that produced rancher bulls and productive females both.

BLAIR'S. AG

54 RED BLAIR'S STEALTH 151M

BBC 151M Apr 02/24 2397860 BW:94lbs WW:640lbs

PEAK DOT UNANIMOUS 586B
RED SIX MILE STEALTH 269F
RED SIX MILE MISS LARK 855A

VISION UNANIMOUS 1418
HEROINE OF PEAK DOT 962U
RED SIX MILE RUGER 221X
RED SVR MISS LARK 100P

RED MANN RED BOX 55C
RED WHEEL ANNIE OAKLEY 57J
RED WHEEL ANNIE OAKLEY 8B

RED SLGN WIDELOAD 920W
RED PELTON MISS AJA 0839U
RED WHEEL N DEAL 143Y
RED WHEEL ANN 106X

BW	CED	WW	YW	MILK	CE
2.5	-0.5	48	78	25	*

55 RED BLAIR'S CARLOS SMASH 113M

BBC 113M Mar 01/24 2390635 BW:91lbs WW:685lbs

RED DUFF RED BLOOD 18114
RED DUFF SMASH 2145
RED DUFF SMASH 1175 18402

RED ROJAS RIOJA 6052
DUFF JUANADA 927K 15124
RED LAZY MC CC DETOUR 2W
RED EGGEN SMASH MISS 1175

RED TER-RON BLOCKBUSTER 130E
RED BLAIR'S MADAME PRIDE 133K
BLAIR'S MADAME PRIDE 645G

RED U-2 RENOWN 193C
RED K ADAMS ZARIA 091Z
RED DAMAR TRUMP C512
S A V MADAME PRIDE 0151

BW	CED	WW	YW	MILK	CE
3.4	-4	42	68	31	*

**SIRE OF LOT 55**

Here is one that screams maternal strength with the pedigree filled with the likes of SAV Madame Pride 0151, Red K Adamas Zaria 091Z and Duff Juanada 927K. Expect outstanding foot quality on the calves off Smash 113M.

BLAIR'S. AG & CARLOS OJEA

LOT 56

Check out the calving ease on this blood red, well balanced, well muscled Red Sunberry Dominion son. You should expect consistency in both type and calving ease from this pedigree.

BLAIR'S. AG

RED SUNBERRY DOMINION 158J
SIRE OF LOT 56

56 RED BLAIR'S DOMINION 112M

BBC112M Mar 01/24 2392859 BW:82lbs WW:620lbs

RED U2 DOMINION
RED SUNBERRY DOMINION 158J
RED U-2 LASSIE 329C

RED U2 TOWNSHIP 17G
RED SIX MILE CD ALANA 118K
RED SIX MILE ALANA 515F

RED HOWE HESSTON 212C
RED U2 HIDEE HO 459D
RED U-2 JUSTIFIED 235Z
RED U-2 LASSIE 23A

RED MRLA RESOURCE 137F
RED U-2 BEAUTY 113Z
RED LMAN KING ROB 8621
RED U6 ALANA 13X



BW	CED	WW	YW	MILK	CE
0.6	6	31	60	21	***

57 RED BLAIR'S SMASH 148M

BBC148M Apr 01/24 2390637 BW:89lbs WW:725lbs

RED DUFF RED BLOOD 18114
RED DUFF SMASH 2145
RED DUFF SMASH 1175 18402

RED U2 TOWNSHIP 17G
RED WVR LADY MAY 48J
RED U-2 LADY 368C

RED ROJAS RIOJA 6052
DUFF JUANADA 927K 15124
RED LAZY MC CC DETOUR 2W
RED EGGEN SMASH MISS 1175

RED MRLA RESOURCE 137E
RED U-2 BEAUTY 113Z
RED U-2 RECON 192Y
RED U-2 LADY 21Z



BW	CED	WW	YW	MILK	CE
1.3	3	35	58	28	**

**LOT 57**

Another moderate BW Duff Smash 2145 calf with outstanding performance, but that's not a surprise when you look at the maternal side of the pedigree and combine that with what Smash 2145 is doing.

BLAIR'S. AG

RED DUFF SMASH 2145
SIRE OF LOT 57

Red Angus YEARLING BULLS *Lots* **58-64**

It's been years since we brought a group of yearlings to the sale – but once Chris said this set belonged back in Sedley, the decision was made. This is a group we're extremely proud of – built on our strongest cow families and donors, elite genetics, and a commitment to cattle that work for our customers in any avenue. They've got the power to add pounds, the kind of body that's easy to manage, and the structure to hold up long term. Please reach out with any questions – we would love to help you find what fits your program.

Baxter Blair, Double B Angus



LOT 58**58 RED DOUBLE B WHIRLWIND 506**

BAX6N Jan 18/25 2443805 BW:93lbs WW:706lbs

RED MANN RED BOX 55C
RED DUFF FAIR WIND 21197
 DUFF CITA 4060 15508

RED DKF RAZOR 55C
RED DOUBLE B LARKABA 9010
 RED BLAIR'S LARKABA 42A

RED SLGN WIDELOAD 920W
 RED PELTON MISS AJA 0839U
 DUFF E BLAST 8138
 RED GT CITA 4060

DKF ELIMINATOR 15A
 DKF MISS NET WORTH 21A
 RED WHEEL GANGSTER 31Y
 RED BLAIRS LARKABA 101Y

BW	CED	WW	YW	MILK	CE
4.3	-6	49	86	28	*



Red Double B Larkaba 9010
DAM OF LOT 58

We are excited to bring an elite group of yearlings back to Sedley this year, and starting off the group is a truly special individual. After seeing Fair Wind in person at P+, I knew I needed to integrate him into our program. Whirlwind 506 has an elite genetic lineage with an unmatched phenotype. He is awesome looking, stout, and big-legged with the perfect haircoat. His dam, Larkaba 9010, is one of our favourite up-and-coming donors out of our famous 42A cow, and has already supplied us with incredible replacement daughters and featured herd bulls. True sale feature here!

Retaining the right to in-herd use semen.



RED DOUBLE B LARKABA 413
 MAT. SIB TO LOT 58



RED DOUBLE B BLOODSHOT 310
 MAT. SIB TO LOT 58

DOUBLE B ANGUS



59 RED DOUBLE B BLOOD BANK 518

BAX 18N Jan 27/25 2443797 BW:78lbs WW:742lbs

RED ROJAS RIOJA 6052
RED DUFF RED BLOOD 18114
 DUFF JUANADA 927K 15124

RED DKF RAZOR 55C
RED DOUBLE B LARKABA 9013
 RED BLAIR'S LARKABA 42A

RED PZC TMAS FIRESTORM 1800 ET
 RED SIX MILE LAKOTA 112Y
 RED CROWFOOT OLE'S OSCAR 2042M
 O C C JUANADA 927K

DKF ELIMINATOR 15A
 DKF MISS NET WORTH 21A
 RED WHEEL GANGSTER 31Y
 RED BLAIRS LARKABA 101Y

BW	CED	WW	YW	MILK	CE
0	6	39	65	28	***

If we were to put all our chips on one mating, it would be the Red Blood x 42A combination. Including the 2023 Reserve National Champion Red Angus Female and a \$25,000 OK 6.0 Sale Feature, this pedigree equips our program with elite cattle year after year. Blood Bank 518 is arguably one of the hardest bulls to fault in our entire offering. He is smooth made, big bodied, and huge pinned with awesome feet and legs. Tackle on his 78 lb birthweight, we feel the generating potential of this future herdsire truly has no limits.

Retaining the right to in-herd use semen.

DOUBLE B ANGUS



RED DOUBLE B LARKABA 9013
 DAM OF LOT 59



RED DOUBLE B LARKABA 539
 \$25,000 3/4 SIB TO LOT 59

MAT. SIB TO LOT 60

Another Duff Fair Wind son out of our Priscilla 017 cow, the dam of our lead off two-year-old in this year's sale, Woodstock 403, and one of the best females we ever raised, Priscilla 305. Cattle of this calibre are the exact reason we flushed 017 extensively this summer, and Fair Fight 520 should carry on that genetic merit.

DOUBLE B ANGUS

LOT 31
MAT. SIB TO LOT 60

60 RED DOUBLE B FAIR FIGHT 520

BAX20N Feb 03/25 2443804 BW:90lbs WW:648lbs

RED MANN RED BOX 55C
RED DUFF FAIR WIND 21197
DUFF CITA 4060 15508

RED SLGN WIDELOAD 920W
RED PELTON MISS AJA 0839U
DUFF E BLAST 8138
RED GT CITA 4060

RED KJHT POWER TAKE OFF
RED DOUBLE B PRISCILLA 017
RED BLAIRS PRICILLA 44Z

RED 500 LINE POWER EYE 161X
RED SRA PAINTBUCKET
RED RINGSTEAD KARGO 215U
RED BRYLOR PRISCILLA 67W

BW	CED	WW	YW	MILK	CE
3.1	-2	44	80	23	*

61 RED DOUBLE B STOPWATCH 510

BAX10N Jan 19/25 2443802 BW:87lbs WW:684lbs

RED MANN RED BOX 55C
RED DOUBLE B RED WATCH 129
RED BLAIRS PRICILLA 44Z

RED SLGN WIDELOAD 920W
RED PELTON MISS AJA 0839U
RED RINGSTEAD KARGO 215U
RED BRYLOR PRISCILLA 67W

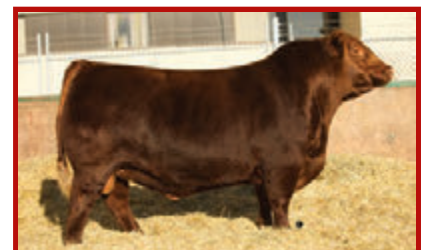
RED DOUBLE B LUCKY STRIKE 900
RED DOUBLE B TAFFETA 104
RED WRIGHTS 357B TAFFETA 9F

RED BLAIR'S BINGO 556D OSC
RED BLAIR'S LARKABA 42A
RED SIX MILE BRUNSON 357B
SIX MILE TAFFETA 544A

BW	CED	WW	YW	MILK	CE
2.8	1	44	77	20	**

**LOT 61**

If you look through our group of Red Watch two-year-olds earlier in the catalogue, you'll understand why we are so excited about the future of this sire group. Stop Watch 510 has the fleshing ability, balance, and perfect foot shape that made his sire one of the most successfully campaigned bulls of any breed in 2023. His dam, Taffeta 104, is a stout, high-quality Lucky Strike daughter, putting the famous Larkaba 42A on the bottom side of an incredibly packed pedigree.

DOUBLE B ANGUS

RED DOUBLE B RED WATCH 129
SIRE OF LOT 61

LOT 62

Although they're twins, these two HD sons have not missed a single beat their entire lives. A pair of moderate, easy-fleshing, stout bulls that are good in terms of build. 503 is the heifer safe option with a moderate 70 lb birthweight.

DOUBLE B ANGUS

DUFF HD 2046
SIRE OF LOTS 62 & 63

62 RED DOUBLE B BTS 503

BAX3N Jan 16/25 2443807 BW:70lbs WW:673lbs

RED MANN RED BOX 55C

RED DUFF HD 2046

RED DUFF CITA 4060 15522

RED SIX MILE BADGER 529G

RED SIX MILE MS REDEEM 314J

RED CER MS REDEMPTION 7036

RED SLGN WIDELOAD 920W

RED PELTON MISS AJA 0839U

DUFF NAPOLEON 232

RED GT CITA 4060

RED HALL'S BARRY 040C

RED HALL'S MISS LARK 504C

RED BROWN JVJ REDEMPTION Y1334

RED KKC MS. DYNASTY 65Y



BW	CED	WW	YW	MILK	CE
3.9	-3.5	58	100	24	***

63 RED DOUBLE B MOTION BLUR 504

BAX4N Jan 16/25 2439030 BW:90lbs WW:658lbs

RED MANN RED BOX 55C

RED DUFF HD 2046

RED DUFF CITA 4060 15522

RED SIX MILE BADGER 529G

RED SIX MILE MS REDEEM 314J

RED CER MS REDEMPTION 7036

RED SLGN WIDELOAD 920W

RED PELTON MISS AJA 0839U

DUFF NAPOLEON 232

RED GT CITA 4060

RED HALL'S BARRY 040C

RED HALL'S MISS LARK 504C

RED BROWN JVJ REDEMPTION Y1334

RED KKC MS. DYNASTY 65Y

BW	CED	WW	YW	MILK	CE
3.9	-3.5	58	100	24	*

**LOT 63**

The darker-haired, more rugged bull of the pair, Motion Blur 504 is awesome bodied, big topped, and thick made. Lots 62 and 63 are out of a gorgeous uddered, easy-fleshing Badger daughter from Six Mile with a great foot shape.

DOUBLE B ANGUS

DUFF HD 2046
SIRE OF LOTS 62 & 63

LOT 64**64 RED DOUBLE B FRESH START 523**

BAX 23N Feb 22/25 2433426 BW:96lbs WW:753lbs

RED COCKBURN ARSENAL 8001
RED WVR FRESH BLOOD 3120
 BLAIR'S MADAME PRIDE 737G

RED PIE SPECIALIST 430
 RED COCKBURN CORA 254Z
 RED RINGSTEAD KARGO 215U
 S A V MADAME PRIDE 0151

RED MANN RED BOX 55C
RED DOUBLE B LARK 222
 RED RAINBOW LARK 9E

RED SLGN WIDELOAD 920W
 RED PELTON MISS AJA 0839U
 RED MOOSE CREEK WESTON 23B
 RED STEWART LARK 602S

BW	CED	WW	YW	MILK	CE
4.8	-6	56	99	25	*

An absolute tank of a bull combining some of the most highly sought-after genetics in the industry. Lark 222 is a Red Box daughter out of the 2018 National Champion Female, Lark 9E, making her a full sister to numerous OK sale features sold across North America. His sire, Fresh Blood, is a bull we purchased from Wauter Valley Ranch for his incredible phenotype and stacked pedigree. Fresh Start 523 should inject the kind of body, power, and substance needed to generate cattle that withstand the test of time.

DOUBLE B ANGUS

RED DOUBLE B LARK 222
 DAM OF LOT 64



RED DOUBLE B PRISCILLA 522
 \$10,000 PAT. SIB TO LOT 64



SimAngus

TWO-YEAR OLD BULLS

Lots
65-70

The SimAngus two year old program is one we are extremely excited about and proud to make it a focus in our program & in the offering. The numbers aren't large but the quality is intense. The strategy is to make SimAngus bulls by flushing elite donors and elite sires from opposing breeds. You will find these bulls very appealing on sale day.

LOT 65**65****RED BLAIR'S RED BOX 119M**

BBC 119M Mar 07/24 1483300 BW:96lbs WW:918lbs

SLGN WIDELOAD 920W

RED MANN RED BOX 55C

RED PELTON MISS AJA 0839U

MR HOC BROKER

RED BLAIR'S SCREAM 530E

RF SCREAM 39X

UBAR HIGH CAPACITY 224

MEADO-WEST PERSUASION

RED 5L NORSEMAN KING 2291

PELTONS MISS IDA 0547R

SVF STEEL FORCE 5701

JM BF H25

SS EBONY'S INTUITION 802

RF SCREAM 31R

BW	CED	WW	YW	MILK	CE
1.4	11.1	71.2	106.7	25.1	*

This guy is exactly what we strive for in our SimAngus program. He is efficient in his type, he is dark red, soft haired and has loads of muscle & shape. His skull design tells the story about this bull. He chalked full of red meat and comes in a calving ease package.

Retaining 1/3 semen interest.

BLAIR'S. AG



Blair's Scream 530E
DAM OF LOTS 65-67



Mann Red Box 55C
SIRE OF LOTS 65-67

LOT 66

It won't take long on sale day to find this guys pen as it will be full of cowboys and a few purebred guys trying to figure out the best way to use this SimAngus in their program. He is everything you want but more importantly he's everything you need. The perfect frame, great hair, extra bone, tons of natural muscle, great shape, perfect skull design.

Retaining 1/3 semen interest.

BLAIR'S. AG

66 RED BLAIR'S RED BOX 122M

BBC 122M Mar 08/24 1483311 BW:94lbs WW:789lbs

SLGN WIDELOAD 920W
RED MANN RED BOX 55C
RED PELTON MISS AJA 0839U

UBAR HIGH CAPACITY 224
MEADO-WEST PERSUASION
RED 5L NORSEMAN KING 2291
PELTONS MISS IDA 0547R

MR HOC BROKER
RED BLAIR'S SCREAM 530E
RF SCREAM 39X

SVF STEEL FORCE S701
JM BF H25
SS EBONYS INTUITION 802
RF SCREAM 31R

BW	CED	WW	YW	MILK	CE
1.4	11.1	71.2	106.7	25.1	*

67 RED BLAIR'S RED BOX 118M

BBC 118M Mar 07/24 1483314 BW:86lbs WW:870lbs

SLGN WIDELOAD 920W
RED MANN RED BOX 55C
RED PELTON MISS AJA 0839U

UBAR HIGH CAPACITY 224
MEADO-WEST PERSUASION
RED 5L NORSEMAN KING 2291
PELTONS MISS IDA 0547R

MR HOC BROKER
RED BLAIR'S SCREAM 530E
RF SCREAM 39X

SVF STEEL FORCE S701
JM BF H25
SS EBONYS INTUITION 802
RF SCREAM 31R

BW	CED	WW	YW	MILK	CE
1.4	11.1	71.2	106.7	25.1	*

**LOT 67**

The Scream 530E x Red Box flush was very successful and the bulls are the cowboys kind as they are easy keeping, muscled up rascals. You will really love this guy on sale day.

BLAIR'S. AG

Internet Bidding Available



For more information call:
Mark Shologan 780-699-5082 or Purebred Team 780-991-3025

LOT 68**68****BLAIR'S BRAVO 546M RC**

BBC 546M Mar 05/24 1483304 BW:90lbs WW:878lbs

COLEMAN CHARLO 0256
COLEMAN BRAVO 6313
 COLEMAN DONNA 714

MR HOC BROKER
RED BLAIR'S SCREAM 530E
 RF SCREAM 39X

O C C PAXTON 730P
 BOHI ABIGALE 6014
 CONNEALY ONWARD
 COLEMAN DONNA 386

SVF STEEL FORCE 5701
 JM BF H25
 SS EBONY'S INTUITION 802
 RF SCREAM 31R



BW	CE	WW	YW	MILK	CE
-0.3	18.1	70.8	111.7	21.2	***

Grab hold of your pen and start making notes. The Scream 530E donor did it again. Note the calving ease sire Coleman Bravo. Analyze the overall shape & dimension. Plan to use him in your heifer pen and think about a long term plan for the daughters.

BLAIR'S. AG

RED BLAIR'S SCREAM 530E
 DAM OF LOT 68



COLEMAN BRAVO 6313
 SIRE OF LOT 68

LOT 69

A true cowboys bull. Here is one that is very interesting as he has the performance needed if you are calving on grass. After you get done analyzing his look & type, check out the maternal sire & grand dam. A SimAngus two year old with Erica 74A in the pedigree. The females off this guy will be high performing and have outstanding udders.

BLAIR'S. AG

BLAIR'S MARTIAL LAW 593E
MAT. GRANDSIRE OF LOT 69

69 BLAIR'S NEXT CENTURY 533M

BBC 533M Mar 01/24 1503650 BW:91lbs WW:1005lbs

WHEATLAND RIVAL 8125F
WHEATLAND NEXT CENTURY 43H
WHEATLAND LADY 123Y

BLAIR'S MARTIAL LAW 593E
BLAIR'S TILDA 564H
JS TILDA 112

CCLT ALLIANCE 91C
WHEATLAND LADY 5213C
STF UNANIMOUS UP26
WHEATLAND LADY 637S

COLEMAN CHARLO 0256
BAR-E-L ERICA 74A
ROYAL PREDESTINED DRCC 8033U
WILBAR TILDA 409S

BW	CED	WW	YW	MILK	CE
2.6	5.3	81	117.4	25	*

70 BLAIR NEXT CENTURY 554M

BBC 554M Mar 12/24 ##### BW:71lbs WW:978lbs

WHEATLAND RIVAL 8125F
WHEATLAND NEXT CENTURY 43H
WHEATLAND LADY 123Y

SILVEIRAS STYLE 9303
PFLC BARBARA 102D
BAILEY ACRES BARBARA 2X

CCLT ALLIANCE 91C
WHEATLAND LADY 5213C
STF UNANIMOUS UP26
WHEATLAND LADY 637S

GAMBLES HOT ROD
SILVEIRAS ELBA 2520
S A V NET WORTH 4200
BAILEY ACRES BARBARA 3P

BW	CED	WW	YW	MILK	CE
4.8	3	76.5	114	20	*



Power & Performance built in. Long spined, packed full of muscle & a proven pedigree on both sides. Check out the donor dam.



PFLC BARBARA 102D
DAM OF LOT 70

BLAIR'S. AG

Simmental

YEARLING BULLS

Lots
71-85



Welcome to the Simmental yearling section of this year's Pursuit of Excellence bull sale. The partnership between Blair's.Ag and Westbrook is in its 7th year, and this will be the 4th group of Simmental bulls to sell in POE.

The cow herd consists of a nice cross section of purebred cows along with a group of percentage females allowing us to use some of the best Angus genetics to incorporate new cow families into the Simmental breed. We think it speaks volumes on the cow herd we continually trying to build that in this years offering only 2 bulls are ET born.

The yearling Simmental bulls are born and raised just north of Cochrane, AB. After weaning go on to a Bullseye Feed bull developer pellet and a dry roughage ration. They are developed there until the end of January and are then hauled to Sedley for sale week. We do semen test the bulls end of January, so the bulls are just 12 months old at this time. We do think this helps keep our fertility strong on the bulls and females in being that the bulls get tested younger then most and our cow herd is put to the test to breed back and calve early so the bulls can all be a year of age at sale time.

We are confident in the program we are building and are proud of this set of bulls over all structural integrity and function condition.

**LOT 71****71****WBC BOOMER 107M**

WBC 107M Dec 28/24 CA-BPTG1521626 BW:93lbs WW:976lbs

RF SHAKEDOWN 074H

RF BOOMER 262K

RF FLIRT 850F

NGDB STRUCTURE 34D

IPU MS. COWBOY CUT 135D

WFL WESTCOTT 24C

RF NOT JUST A FLIRT 404B

MR HOC BROKER

JR BROOKE 16B

JR ERICA TOO

SVF STEEL FORCE 5701

JM BF H25

STF TOO RED G64

CRCC DIXIE ERICA 4053P

BW	CED	WW	YW	MILK	CE
3.8	5.8	82.8	124.2	22.1	*

WESTBROOK VENTURES*RF Boomer 262K*
SIRE OF LOTS 71 - 75

A pen favourite all this summer and fall. 107M is the type to add size and pounds to the calf crop. He is long bodied, powerful and carries it all with a proud presence along with a big square foot. If you follow our program at all you know the Brooke 16B cow always leaves a positive mark on the calf crop. Three other bulls in this years sales are grandsons of 16B. With Boomer on the top side it is no surprise why 107M carries the mass and power that he does. Together this mating has clearly clicked and we are excited to see the impact this bull makes in the future.

Homo Polled, Hetero Blk**JR BROOKE 16B****DAM OF LOT 71****WBC RATCHET 6M**
FLUSHMATE TO LOT 71

LOT 12

A Boomer son that follows suit, long bodied, deep quartered, attractive and moves flawlessly. 103M's dam is a young cow we purchased a few years ago from the first annual Canadian Sires and Donors production sale. Her first calf sold this fall as a bred in SimpPower, she was the high selling black bred and now calls Deeg Simmentals home. 103M would be her second calf and he is turning heads in the bull pen. To have a young cow that productive behind a herd bull is something we strive for.
Homo Polled



CD LINDA 1474
DAM OF LOT 72



WBC LINDA 17M
MAT. SIB TO LOT 72

WESTBROOK VENTURES**12 WBC BOOMER 103M**

WBC 103M Dec 25/24 CA-BPG1521999 BW:91lbs WW:854lbs

RF SHAKEDOWN 074H

RF BOOMER 262K

RF FLIRT 850F

NGDB STRUCTURE 34D
IPU MS. COWBOY CUT 135D
WFL WESTCOTT 24C
RF NOT JUST A FLIRT 404B

WLE COPACETIC E02

C-D LINDA 1474

RUST LINDA 9563G

HPF QUANTUM LEAP Z952
CMFM JOY 02ZB
NGDB STRUCTURE 34D
R&R MISS CUT ABOVE Y127

BW	CED	WW	YW	MILK	CE
5.3	4.5	108.9	159.8	17.4	*

13 WBC BOOMER 17N

WBC 17N Jan 08/25 CA-BPG1522020 BW:91lbs WW:806lbs

RF SHAKEDOWN 074H

RF BOOMER 262K

RF FLIRT 850F

NGDB STRUCTURE 34D
IPU MS. COWBOY CUT 135D
WFL WESTCOTT 24C
RF NOT JUST A FLIRT 404B

SVS BETTS 808F

WESTBROOK BROOKE 5H

JR BROOKE

BGS/BM CAPTAIN SCREAM 63D
WFL RED SAGE 506C
MR HOC BROKER
JR ERICA TOO

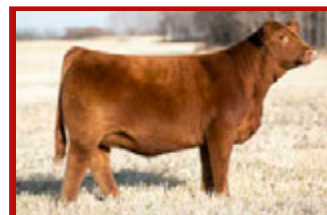
BW	CED	WW	YW	MILK	CE
4.7	5.4	92.4	138.7	21.3	*

LOT 13

Likely one of the most balanced bulls in the pen. Long spined, plenty of muscle, deep ribbed. A real soft, easy fleshing bull. If you tour our place in the summer there is a pair of black cows that are always spotted, they also happen to be full sibs and one is the dam to 17N. They are correct made with tidy udders and daughters of 16B. When you breed this type of cow family to a bull like Boomer things not only fall into place but they line up right.
Homo Polled

WESTBROOK VENTURES

WESTBROOK BROOKE 5H
DAM OF LOT 73



WBC BROOKE 2J
SISTER TO DAM OF LOT 73

74

WBC BOOMER 106M

WBC 106M Dec 28/24 CA-BPG1522003 BW:88lbs WW:832lbs

RF SHAKEDOWN 074H

RF BOOMER 262K

RF FLIRT 850F

HPF FAST TRACK A361

HPF/JF/GF LUCKYGIRL D094

GSC LUCKY GIRL 73A

NGDB STRUCTURE 34D

IPU MS. COWBOY CUT 135D

WFL WESTCOTT 24C

RF NOT JUST A FLIRT 404B

W/C WIDE TRACK 694V

MYERS QUEEN SAZERAC P94

JS SURE BET 4T

MISS WERNING KP 8543U

BW	CED	WW	YW	MILK	CE
3.5	7	87.4	128.4	23.4	*

106M is no sleeper in this year's pen. His proud appearance and smooth shouldered look doesn't go unnoticed. Sound structured and easy moving. His actual weaning weight just under 1000 lbs is very impressive seeing as his dam, 94D, would weigh about 1350 lbs and is also coming 10 this year. She is more calving ease designed but clearly has no trouble raising one. 106M would have crossed the scale this fall weighing 70% of his dam's body weight.

WESTBROOK VENTURES

75

WBC BOOMER 105M

WBC 105M Dec 27/24 CA-BPR51522002 BW:89lbs WW:808lbs

RF SHAKEDOWN 074H

RF BOOMER 262K

RF FLIRT 850F

SPRINGCREEK OLYMPIAN 66A

WHL TIBBIE 1524C

THUNDER CREEK TIBBIE 20U

NGDB STRUCTURE 34D

IPU MS. COWBOY CUT 135D

WFL WESTCOTT 24C

RF NOT JUST A FLIRT 404B

SPRINGCREEK ALL IN 155Y

SPRINGCREEK LINNE 33R

MYTTY IN FOCUS

THUNDER CREEK TIBBIE 82S

BW	CED	WW	YW	MILK	CE
4.5	5.3	94.5	139.8	19.2	*

A real fault free, balanced type of bull. Correct on the move, soft in his middle third and has an easy keeping look to him. 105M's dam 1524C will turn 11 this spring. She has 8 registered progeny and just had her 9th natural born calf a few days ago, making a pretty impressive track record. When you line up this cow power with the maternal list on Boomer's side, the story writes itself.

Homo Polled $\frac{3}{4}$ blood**WESTBROOK VENTURES**

76

WBC BUCKEYE 41N

WBC 41N Feb 12/25 CA-BPRS1522038 BW:86lbs WW:795lbs

R PLUS YUMA 9087G

RF BUCKEYE 173J

MADER SHEILA 39F

SVS BETTS 808F

WBC ANNIE K 9J

SOO LINE ANNIE K 9165

R PLUS 5015C

MISS R PLUS 3007A

WS STEPPING STONE B44

LFE BS SHEILA 82A

BGS/BM CAPTAIN SCREAM 63D

WFL RED SAGE 506C

BAR-E-L THOR 6T

SOO LINE ANNIE K 627I

BW	CED	WW	YW	MILK	CE
3.5	5.7	80.2	127.4	20.8	*

The youngest bull in the pen this year but needs no excuses. He is smooth made, easy fleshing and full of muscle. If you are seeing the pattern of strong cows behind these bulls this one is no exception. 9J is a direct daughter of the well known Angus cow Sooline Annie K 9165. We were very fortunate to have had the opportunity to enroll this cow into the Simmental herd book and continue to use her as a building tool for great maternal outcross genetics. When the World Simmental Congress came to Canada in the summer of '24 they tied a junior show into it, we broke 9J as a three year old and sent her to town to represent the cows in our program. 9J has a flush mate working at Sunny Valley Simmentals and the brother in the flush was a high seller to Loomis's in Kansas in 2023. 41N is 9J's first bull calf.

Homo Polled $\frac{3}{4}$ blood**WESTBROOK VENTURES****LOT 74****DAM****LOT 75****DAM****LOT 76****DAM**

LOT 77

We lead off the Intensity sons with 29N, a bull that is soft made, deep sided, big hipped and has real herd bull presence. The parentage behind this bull is more than impressive with Intensity being a direct son of RF Scream 974G. A full sister to Intensity had a wicked fall run capping off with Supreme Female at Farmfair and a Top Ten spot in Agribition's Supreme and a maternal sister was just sold at FNL for \$170,000. The bottom side of 29N's pedigree is led by 9H one of our Brooke 16B x Betts daughters. 9H is quickly leaving her mark in the cow herd. This fall she was the dam of one of our Simpover heifers which sold to Pieschel Farms. When these cows have the ability to be donors but then raise a calf naturally like 29N we know the future is going to be exciting.

Homo Polled

WESTBROOK VENTURES**77****WBC INTENSITY 29N**

WBC 29N Jan 20/25 CA-BPG1522028 BW:98lbs WW:805lbs

RF CALIBER 014G
RF INTENSITY 3142
 RF SCREAM 974G

NGDB STRUCTURE 34D
 RF NOT JUST A FLIRT 404B
 RF CAPACITY 742E
 RF SCREAM 215Z

SVS BETTS 808F
WESTBROOK BROOKE 9H
 JR BROOKE

BGS/BM CAPTAIN SCREAM 63D
 WFL RED SAGE 506C
 MR HOC BROKER
 JR ERICA TOO

BW	CED	WW	YW	MILK	CE
2.1	8.5	85.2	117	24.1	*

78**WBC INTENSITY 11N**

WBC 11N Jan 03/25 UNR1538110 BW:86lbs WW:762lbs

RF CALIBER 014G
RF INTENSITY 3142
 RF SCREAM 974G

NGDB STRUCTURE 34D
 RF NOT JUST A FLIRT 404B
 RF CAPACITY 742E
 RF SCREAM 215Z

DRAKE POKER FACE 2X
CMS SODA POP 417B
 HPF CREAM SODA Y010

JS SURE BET 4T
 DRAKE TULA 1R
 JF MILESTONE 999W
 IC CREAM SODA R56

BW	CED	WW	YW	MILK	CE
3.4	7.8	88.1	128	21.2	*

LOT 78

A real easy fleshing, correct and balanced bull. Another Intensity raised naturally by one of our donor females. 417B is a member of the iconic set of flush sisters by Cream Soda and Poker Face, she is responsible for herd bulls Gold Key, Red Heat and High Stakes just to name a few. She's only called Westbrook home for a couple years now but we are excited to calve out two daughters this winter one which the kids also took to the World Congress show where she was res champion heifer calf. When a 12 year old cow can still raise one to send to the bull sale it shows how those right genetics bring consistency and longevity into the mix.

Homo Polled

WESTBROOK VENTURES

LOT 79

Stout made, attractive type bull that follows the Intensity pattern. 850M's dam was purchased from the Rust Mountain View program, she is out of the Flirt cow family and it shows when you see her out in the summer, she is a beautiful powerhouse cow. 850M is her ET calf but she nursed a full sister to him this summer, we took her to Agribition where she placed 3rd in her class in the tough senior division. She was sold in the Opportunity Knocks Sale last month to the Grindheim Family where we hear she gets to be a junior show project, can't get much better than that!

Homo Polled & Hetero Black

WESTBROOK VENTURES & BLAIRS.AG



WBC JUSTFLIRTIN 807N
FULL SIB TO LOT 79



RUST MS JUSTFLIRTIN 808F
DAM OF LOT 79

79 BLAIR'S WB INTENSITY 850M

BBC 850M Dec 29/24 1522072 BW:91lbs WW:844lbs

RF CALIBER 014G
RF INTENSITY 3142
RF SCREAM 974G

NGDB STRUCTURE 34D
RF NOT JUST A FLIRT 404B
RF CAPACITY 742E
RF SCREAM 215Z

TJSC BOONE PICKENS 46C
RUST MS JUSTFLIRTIN 808F
RF NOT JUST A FLIRT 404B

REMINGTON LOCK N LOAD 54U
TJSC KNOCKOUT 121Y
SVS CAPTAIN MORGAN 11Z
RF CERTAINLY FLIRTIN 202Z

BW	CED	WW	YW	MILK	CE
5.4	3	92.2	138	22.1	*

80 WBC INTENSITY 111M

WBC 111M Dec 31/24 CA-BPG1522006 BW:95lbs WW:837lbs

RF CALIBER 014G
RF INTENSITY 3142
RF SCREAM 974G

NGDB STRUCTURE 34D
RF NOT JUST A FLIRT 404B
RF CAPACITY 742E
RF SCREAM 215Z

LFE BEER MONEY 811Y
LFE BS CHARO 38C
LFE BS RIGHT MOVE 623P

LFEISS BLACKADVANCE 426U
LFE READY TO TANGO 609S
LFE BRING IT BLACK 811K
KLC MISS RIGHT MOVE 307N

BW	CED	WW	YW	MILK	CE
6.2	1.8	91.8	136.3	17	*

LOT 80

He might be the last black cow bull in the catalogue but he could very well be first on your list. 111M was the 4th heaviest bull at weaning time and with the key features this bull carries you can see why. Long spined, heavy muscled and carries that muscle well into his lower quarter. 38C is a nice uddered, wide made cow that rolled around on a massive square foot. Another proven cow that stands behind an impressive bull.

Homo Polled

WESTBROOK VENTURES



MAT. SIB



MAT. SIB



LFE BS CHARO 38C
DAM OF LOT 80

LOT 81

WESTBROOK VENTURES & BLAIRS.AG

A great calving ease option here with 801N. He has an actual BW of 78 lbs and great EPD's to follow, 14.8 CE / -1.1 BW. With Slider on the top side not only do you have one of the breed's leading calving ease sires but also a real cow maker. The Slider daughters are leaving their mark as they come into production. 801N himself is a deep quartered, big middled, smooth shouldered bull in a moderate package. We are continuing to use the power of the Angus cow to upgrade and bring in new genetics to the cow herd, this bull is a great example why.

Homo Polled

Retaining 1/3 semen interest.

RED BLAIR'S BARRETTA 854L
DAM OF LOT 81KT MS BARRET 809H
MAT. GRANDDAM OF LOT 81**81 BLAIR'S WB SLIDER 801N**

BBC 801N Jan 01/25 CA-PG1537579 BW:78lbs WW:783lbs

CDI VEGAS 26X
KWA SLIDER 196H
CROWE GOLDIE 3F

NUG JACKPOT 51J
RED BLAIR'S BARRETTA 854L
KT MS BARRETTA 809H

HSF HIGH ROLLER 12T
CDI MS CROCKET 110U
HART STATE OF WAR 056C
CROWE GOLDIE 3C

R PLUS YUMA 9087G
SPRINGCREEK BROOKE 68Z
SVS BETTS 808F
RED SIX MILE BARRETTA 188E



BW	CE	WW	YW	MILK	CE
-1.1	14.8	82	125.5	23.8	***

82 WBC SLIDER 104M

WBC 104M Dec 27/24 CA-BPRS1522001 BW:67lbs WW:828lbs

CDI VEGAS 26X
KWA SLIDER 196H
CROWE GOLDIE 3F

COLEMAN BRAVO 6313
BLAIR'S SCREAM 803L
RED BLAIR'S SCREAM 530E

HSF HIGH ROLLER 12T
CDI MS CROCKET 110U
HART STATE OF WAR 056C
CROWE GOLDIE 3C

COLEMAN CHARLO 0256
COLEMAN DONNA 714
MR HOC BROKER
RF SCREAM 39X



BW	CE	WW	YW	MILK	CE
-3.2	20.9	75.8	116.6	21.8	***

LOT 82

The black calving ease bull in the pen with a set of pretty impressive numbers. An actual birth wt of 67 lbs, CE EPD of 20.9 and BW of -3.1. Now the most impressive number of this bull is his actual weaning wt, 906 lbs. If there is anything that can make the cow/calf operation money it's the gain from birth to weaning. This bull for sure checks that box. Again a hint of Angus in there helps top up your calving ease and maternal qualities. Majority of the 2 yr old SimAngus bulls in the sale are either full or half sibs to the dam of 104M as well.

Homo Polled ¾ blood

WESTBROOK VENTURES



DAM



MAT. GRANDDAM



SIRE

LOT 83

The red grandson of Brooke 16B. 19N's dam, 2K, would be one of our favorite red cows on the place. Her first calf, a Slider daughter was just the high selling red female in Simpover to S4 Ranches for \$32,000. Her second calf 19N is a stand-out in the bull sale pen. As we are trying to increase red numbers Rancher has been our bull of choice. He reads incredibly well on paper and seems to click no matter the cow you use him on.

Homo Polled

WESTBROOK VENTURES

WESTBROOK BROOKE 2K
DAM OF LOT 83

83**WBC RANCHER 19N**

WBC 19N Jan 10/25 1538111 BW:86lbs WW:826lbs

SVS TYCOON 841F
SVS RANCHER 42H
HLTS SAMMIE

SVS BROOKS 669D
SVS RED ANNIE 411B
WS BEEF KING W107
BRANT DONT YA LOVE ME

RF CAPACITY 742E
WESTBROOK BROOKE 2K
JR BROOK

WFL WESTCOTT 24C
RF FAMOUS 409B
MR HOC BROKER
JR ERICA TOO

BW	CED	WW	YW	MILK	CE
3.6	6.6	90	132.3	23.6	*

84**BLAIR'S WB PTO 851M**

BBC 851M Dec 31/24 1536508 BW:84lbs WW:777lbs

SVS TYCOON 841F
SVS BRIMSTONE 68J
WFL SAGE 506C

SVS BROOKS 669D
SVS RED ANNIE 411B
R PLUS RELOAD 2006Z
WFL RED SAGE 1003Y

KWA LAW MAKER 59C
DOUBLE BAR D SMARTY PANTS 430E
MRL MISS SMARTY PANTS III

CDI AUTHORITY 77X
KWA M5 ROCK 14X
LFE RED CASINO 3036X
TRIPLE C SMARTY PANTS R

BW	CED	WW	YW	MILK	CE
2.1	8.5	78.1	117	24.1	*

LOT 84

DOUBLE BAR D SMARTY PANTS 430E
DAM OF LOT 84



SVS BRIMSTONE 68J
SIRE OF LOT 84

A Brimstone son off a proven Smarty Pants cow. Brimstone was a bull that we likely didn't get a chance to use enough of before we lost him this summer. He was heavy muscled, structurally correct and round in his type. 851M follows right in suit plus a few positive features from his dam, 430E. She will be 9 years old and does not look that in the flesh. As exciting as new genetics are there is nothing more rewarding then watching proven ones carry on.

WESTBROOK VENTURES & BLAIRS.AG

LOT 85

85 RED BLAIR'S WB JACKSON 804N

BBC 804N Jan 07/25 CA-P1522061 BW:92lbs WW:837lbs

SIBELLE POL DARWIN 21F
SILVER LAKE JACKSON 24J
 MCM MISS FARRAH FF 10F

SBV REPUTATION 707F
SBV PIXIE 913K
 SBV PIXIE 793A

SIBELLE SPARTACUS 8A
 SIBELLE POL MOLLY 7B
 ANCHOR D HIGH NOON 247B
 BAR 5 BERTA DA ZURITA

CHERRY CREEK GLITZ 4D
 SUNNY VALLEY RHEA 54C
 DOUBLE BAR D CHESAPEAKE
 DLH MISS PIXIE 6P

BW	CED	WW	YW	MILK	CE
5.1	3.5	73.3	101.1	34.4	*

Just one sole Fullblood again for this years offering. He's a pretty cool dude who comes in a polled package. He's flexible in his movement, soft sided and deep sided. His dam is a tidy uddered, polled daughter of Reputation, who has proven to really be a female maker. 804N's sire recently sold in the World Congress Sale as a mature bull for \$100,000. Jackson is horned so getting a polled son of this caliber from him is a pretty neat deal.

WESTBROOK VENTURES & BLAIRS.AG



SBV PIXIE 913K
 DAM OF LOT 85



RED BLAIR'S LOOK 811M
 MAT. SIB TO LOT 85



SILVER LAKE JACKSON 24J
 SIRE OF LOT 85

THE FINE PRINT TERMS & CONDITIONS

Terms:

The terms of the sale are cash or cheque, payable at par at the sale location. The right of property shall not pass until after settlement has been made; no invoicing on buyers in attendance unless previous arrangements have been made. Every animal sells to the highest bidder and in cases of disputes the auctioneer's decision will be final. Announcements from the auction block will take precedence over the printed matter in the catalogue. Current exchange rates will be announced sale day. All monies are in Canadian funds.

Certificate of Registration:

Each animal will carry papers issued by either the Canadian Angus Association or the Canadian Simmental Association accordingly, unless otherwise specified. A certificate of registry duly transferred will be furnished to the buyer for each animal after payment has been made.

Pedigree Estimates:

Pedigree Estimates (PE) are created on the projected mating of the animal's sire and dam based on averages of the two, creating estimated values that do not hold the same accuracy of actual EPDs issued from the association and should be used as such.

Health:

All animals in the sale have met all necessary health requirements.

Guarantee:

Each animal becomes the purchaser's risk immediately after the animal is sold. All animals in this sale will be sold under the terms and guarantees set forth by either the Canadian Angus Association or the Canadian Simmental Association accordingly, with regard to health, freedom from defects and from both reproductive and specific genetic unsoundness.

Liabilities:

All persons attend the sale at their own risk. The sellers, facility owner, auctioneer and sale manager assume no liability, legal or otherwise, for any accidents that occur. It is understood that T Bar C Cattle Co. (2013) Ltd. is acting only as a medium between buyer and seller and is not responsible for any failure on the

part of either part to live up to his obligations. Neither does T Bar C Cattle Co. (2013) Ltd. assume any financial obligations to collect or enforce collection of any monies between parties and any legal action that may in exceptional cases be taken must be between the buyer and the seller. T Bar C Cattle Co. (2013) Ltd. assumes no responsibility for any credit extended by the seller to the buyer. The buyer must look to the seller for fulfillment of all guarantees and representations made hereunder.

Delivery:

Every assistance will be given in getting your purchases home. Each animal becomes the risk of the purchaser as soon as sold.

Phone, Mail, Wire Bids:

Bidders unable to attend the sale may phone, wire or mail their bids and instructions to the sale manager, auctioneer or special representatives. Bids must be received in sufficient time prior to the sale.

Insurance:

Agents will be in attendance to insure your purchases. We strongly recommend that insurance is purchased for full value.

Errors:

All announcements at sale time, written or oral, supersede any written material in the catalogue.

NOTES

**Return Undeliverable
Canadian Addresses To:**

**T Bar C Cattle Co. Ltd.
Box 2330
Warman, SK S0K 4S0**



**RETURN POSTAGE GUARANTEED
PORT DE RETOUR GARANTI**

OPPORTUNITY KNOCKS SALE 7.0



DECEMBER 2026
LANIGAN, SK
3 P M