

32ND [BACK TO THE BASICS]

▪ *Bull Sale* ▪



FEBRUARY 14, 2026, 3PM SALE TIME | AT THE FARM, EDGERTON, AB
HEREFORD, ANGUS & CHAROLAIS



Welcome TO OUR 32ND ANNUAL BULL SALE

On behalf of the MJT Cattle Co. family, we are pleased to welcome you to the edge of the Battle River Valley and to one of the first bull sales of the 2026 Canadian Bull Run. Each year brings renewed optimism, outstanding cattle, and—most importantly—great people, and we are grateful you have taken the time to consider our program. We are sincerely thankful for the many friends, neighbours, and fellow cattlemen who travel the miles throughout the year to lend a hand, stop for a visit, and tour the cattle. The opportunity to reconnect with long-standing members of our extended “family,” while welcoming new visitors each season, is something we value greatly. Customer satisfaction has always been our top priority, and our commitment to earning and maintaining that trust remains unwavering.

Guided by our motto, “Trusted for Generations – Built on Maternal Strength,” our focus has never wavered from the fundamentals. We strive to produce cattle that are economical, consistent, and prepotent—cattle that remain structurally sound in foot and udder, maintain fertility and longevity in the herd, and efficiently add pounds in a functional, moderate package. Structure, maternal ability, fertility, and productivity form the foundation of every mating decision we make. Our cow herd is built on proven females, with a strong emphasis on natural production, while select elite females are utilized in our ET program to responsibly expand the influence of those genetics. The goal is simple: to provide dependable, consistent, and structurally sound cattle, with the occasional introduction of new genetics that add value to our customers’ programs. This balanced approach allows us to offer bulls that are consistent, dependable, and structurally sound, while still providing access to progressive genetics that add value without sacrificing function.

We encourage you to arrive early, stay late, and take the time to study the cattle and program, visit with fellow breeders, and enjoy the full MJT experience, including after-hours camaraderie and live entertainment. If you are unable to attend in person, please do not hesitate to call. We will offer the same honest and straightforward evaluation of each animal that we would expect if we were buying for ourselves. When working with one of us, we are pleased to offer a sight-unseen guarantee, and as always, we stand behind our cattle 100%.

Thank you for your interest in MJT Cattle Co. Please let us know how we can assist you in selecting herd sires and in being a trusted source of genetics for your operation.

Sincerely,

- The Trefiak Family

Mick & Debbie

Kurt & Shannon, Matthew, Ryan & Casey

Mark, Kristi & Kaden Laboucane

Kurt: 780-619-2224

Mick: 780-842-8835 (Phone Only)

Matthew: 306-830-6428

www.mjt.ca / kurt@mjt.ca



Sale Day
FEBRUARY 14, 2026

Sale Time
SALE TIME: SATURDAY 3:00 PM

OFFERING			
45	56	34	3
HEREFORD	ANGUS	CHAROLAIS	FI'S
BULLS			

Schedule

8:30 AM.....COFFEE & DONUTS
12:30 PM.....PRIME RIB DINNER
3:00 PM.....SALE
5:30PM.....CHILI SUPPER
6:30 PM.....BAND

VIEW THE CATALOG
ONLINE AT:

www.mjt.ca
www.cattlevids.ca
www.dlms.ca
www.buyagro.com



Join us for a Social and Cabaret after the sale.
Featuring the Dirt Rich Band and Jordyn Pollard

Internet Bidding Available

D | L | M | S

www.dlms.ca

Direct Livestock Marketing Systems

For more information call:
Mark Shologan 780-699-5082 or Purebred Team 780-991-3025



SALE DAY INFORMATION

SALE DAY CONTACTS

KURT TREFAK.....780-619-2224
MICK TREFAK (NO TEXTS).....780-842-8835
MATTHEW TREFAK.....306-830-6428
SHANNON TREFAK.....780-722-3032
JESS VERSTAPPEN.....780-523-0187

SALES CONSULTANTS

OBI LIVESTOCK,
MARK HOLOWAYCHUK.....403-896-4990
PETROSA EXPORTS,
ROGER PETERS.....403-828-9815

US REPRESENTATIVE

PJ BUDLER.....682-597-0380

AUCTIONEER

RYAN HURLBURT.....306-292-9812

SALES STAFF

CASEY LAWES.....780-753-1466
JESSE LAWES.....780-753-8590
JIM PULYK780-787-0646

DLMS

MARK SHOLOGAN.....780-699-5082
SALE DAY SUPPORT.....780-991-3025



ACCOMODATIONS

WAINWRIGHT RAMADA.....780-842-5010
WAINWRIGHT R&R INN.....780-842-2277
WAINWRIGHT BEST WESTERN.....780-845-9934
VERMILION POMEROY.....780-853-3066

SALE PICTURES & VIDEOS

WHITNEY BOSOVICH
MATTHEW TREFAK

PRINTING

THE BURKE GROUP

INSURANCE

JILL WILDMAN (ON SITE).....780-305-1146
CANADIAN FARM INSURANCE CORP.

SIGHT UNSEEN PURCHASES

If you are unable to attend the sale and wish representation, please call Mick or any of the above sales staff and we will gladly assist you. For the sight unseen purchases we guarantee satisfaction upon delivery.

DELIVERY

Pick up your bull before May 1, 2026 and receive \$150 off each bull. If you leave your bull at MJT please ensure that your bull is insured. We will continue to offer free delivery for the first 500Km. Depending on the delivery route, we may not be able to deliver directly to your ranch, but rather to a central location close to you. Our delivery runs are scheduled the last week March and first two weeks of April. We will feed bulls a high roughage ration at no cost until May 1st, 2026. If you have not accepted your bull on the scheduled run to your meeting point, after May 1st you will be charged at a cost of \$3.50 per day per head and Transport will be the buyer's responsibility.

INTERNATIONAL PURCHASES

For US & Mexico purchases, we will arrange all export testing to be completed and assist in arranging brokerage and trucking to get the cattle to their destination. All bulls sold internationally will be charged an additional \$500/bull to cover export testing fees. Brokerage and delivery service will be at the purchasers expense.

PAYMENT OPTIONS

MJT's payment plan is 1/2 down on sale day and a post dated cheque for June 1, 2026. Please call Mick or Kurt prior to the sale if you would like to make alternate payment arrangements. Interest will be charged at a rate of 6% per month overdue accounts. Payment or Post-dates must be received prior to Delivery of bulls. Right of property shall not pass until settlement is made in full.

INSURANCE

Each animal becomes the risk of the purchaser as soon as sold. To protect the buyer's interests, we strongly recommend insuring the bulls. There are many insurance options available, including a 6 month plan to get them through their first breeding season. MJT Cattle will not provide Sale credits on Insurable losses. While we do provide replacement bulls for Warranty Issues, if you require a replacement bull for an insurable loss there will be a leasing charge. Should you purchase a bull the following year the amount will be returned as a sale credit.

RIGHT TO SEMEN

MJT reserves the right to collect semen at MJT's expense and the buyer's convenience. Any semen collected will be for MJT Cattle Company's in herd use only, unless specified in the terms of sale of a lot.

HOOF TRIMMING

No feet have been trimmed on any sale bulls.

BULL WARRANTY

All bulls are guaranteed breeders. All bulls are semen tested and vet inspected, and under a full herd health program. The Standard Canadian Hereford and Canadian Angus Association guarantee applies, as well as our 100% Customer Satisfaction Guarantee. We do not warranty against injury or illness after the sale, and encourage the use of insurance for that purpose. MJT will have replacement bulls on hand to cover your breeding season should you have any issue with your bull. Under no circumstances shall MJT be responsible for more than the purchase price of the said animal.

ANNOUNCEMENTS

From the auction block take precedence over what is printed in the catalog.

LIABILITY

The owners, their employees, sales staff, and representatives accept no responsibility for accidents or illnesses that may occur. Persons who attend do so at their own risk.



SALE DAY INFORMATION



CATTLE CO. LTD.
Trusted for Generations

ENTER "MJT CATTLE" INTO
GOOGLE MAPS TO FIND US!

MAILING ADDRESS
MJT Cattle Company
465041 - Highway 894
R.R. 1, Edgerton, AB T0B1K0

DIRECTIONS TO THE RANCH

Travel 14 miles East of Wainwright to Secondary Highway 894. Go North for 11 and 1/2 miles.

From Vermilion go South on Highway 41 to Secondary Highway 614. Turn East and go approximately 13 miles to Secondary Highway 894. Go North for 2 and 3/4 miles.

From Kitscoty go South on Secondary Road 897. Cross Battle River and turn West on the first road after the river onto Township Road 454. Travel approximately 6 miles West and turn North on Secondary Highway 894. Go 7 and 1/2 miles North.

From Marsden, Saskatchewan go West on Highway 14. Turn North on Secondary Highway 894. Go 11 and 1/2 miles North.

SALE DAY Staff



JESS VERSTAPPEN



JESSE LAWES



RYAN HURLBURT



CASEY LAWES



JIM PULYK



MEET THE TEAM



Mick & Deb TREFIAK

Mick and Deb Trefiak are the founding heart and vision behind MJT Cattle. Since 1977, they have built the ranch from the ground up, focusing on integrity, sound genetics, and long-term relationships. Mick and Deb's decades of ranching, breeding, and cattle care experience are an invaluable resource, and the opportunity to have three generations working together and learning from each other is a gift that we don't take for granted. They believe in raising an honest product and standing behind it 100%. Awards and banners aside, they see their most significant achievement in passing those same ethics along to their grandsons.



Kurt & Shannon TREFIAK

In addition to handling many of the day-to-day logistics that keep MJT running strong, Kurt plays a key role at MJT Cattle by bridging his passion for technical expertise with practical agriculture. His focus is firmly rooted in stewardship and progressive land use, with a commitment to managing MJT's land base in a way that balances productivity with long-term soil health, sustainability, and responsible resource use. Whether it's evaluating new technologies, refining agronomic practices, or planning for the future of the operation, Kurt consistently looks for ways to improve efficiency while protecting the land for the next generation. This includes a commitment to producing cattle that are adaptable and able to produce through some of Mother Nature's toughest challenges. Shannon complements his vision and leadership by supporting him with office management, client relations, and developing relationships that connect MJT to the broader industry.



Matthew TREFIAK

As Herdsman at MJT Cattle, Matthew is hands-on with every aspect of the cattle operation. His role includes daily care and handling of the herd, overseeing phenotypic and performance evaluations, and contributing to breeding decisions that shape the program's future. He represents MJT with pride and attention to detail both in the pasture and the show ring. Livestock judging is a true passion for Matthew and an extension of one of MJT's core values: mentoring youth. Through judging and industry involvement, he enjoys helping young people build confidence, skills, and a deeper understanding of livestock. At the heart of it all, Matthew enjoys the cattle—but just as much, he values the people and relationships that make the livestock industry what it is.



Ryan TREFIAK

Ryan helps across both the cattle and crop sides of the operation. He steps up wherever he's needed; processing, caring for and preparing show cattle, and putting in long days during the cropping season. Ryan has a strong mechanical aptitude and a practical, hands-on mindset. Next year, he is heading to Iowa State University to study Agricultural Systems Technology, where he plans to further develop his skills in equipment, systems, and modern agriculture. Beyond the work itself, Ryan genuinely enjoys youth events, particularly working with younger peers. He leads by example, demonstrates maturity beyond his years, and brings steady leadership and a strong work ethic to everything he's involved in.



Casey TREPIAK

Casey has a genuine love for cattle and a natural eye for selecting good ones. Casey enjoys the outdoors and hunting, and that appreciation for time outside translates into a strong work ethic on the ranch. He's a great help on weekends, always willing to pitch in where needed and learn along the way. His attention to detail and his perceptiveness are genuine assets in his love for all things Agriculture.



Cory ROBINSON

Cory is a steady, dependable presence at MJT Cattle Company, especially during the busiest times of the year. As an equipment operator and maintenance lead, he keeps things running when it matters most—handling breakdowns, building projects, and whatever else comes his way. He takes everything in stride in our fast-paced, constantly evolving environment, never hesitating to adapt or step up. His calm approach, work ethic, and willingness to push through long days make a real difference to the success of the operation. The boys have really enjoyed working alongside him, and are learning so many skills in their time spent together.



Ariana

Ariana plays an important role in the hospitality and organizational side of MJT Cattle. From preparing meals for the crew, helping prepare for events, feeding our guests, and looking after what seems like a million other tasks that all help to keep things rolling efficiently. Her attention to detail, thoughtfulness, and ability to anticipate needs help everything run smoothly behind the scenes. She brings a positive, caring presence to the operation, and her contributions make a real difference in how people experience MJT.

April WARRILOW

April joined us two years ago, and it is hard to imagine the day to day here without her now. She plays an important role in the day-to-day care and management of our cattle at MJT Cattle Company. She is attentive to animal health and takes pride in the herd as if they were her own. Her reliability and willingness to step in wherever she is needed has been a major contributing factor to the wellbeing of the herd and our overall success this past year.



Jordynna ROGERS

Jordynna has been with us 3 summers as our Administrative Assistant. She took ownership of data collection and entry, has worked her way up to complete registration management, and has consistently looked for better ways to keep information organized and up to date. She is dependable & proactive, and when she isn't here in the summer, you can usually find her volunteering behind the scenes at various Junior Cattle shows.



our Philosophy

We put on 25,000 miles a year searching for seedstock to ensure our program is continually going “Back to The Basics”.

At MJT Cattle Co., Back to The Basics is more than a sale name—it reflects the philosophy and intentionality behind every breeding, management, and selection decision we make. In an industry that can be quick to chase trends, extremes, or short-term gains, we believe lasting progress is built by consistently doing the fundamentals well. While we recognize the value of genomic and performance data, our program is not built by pouring over spreadsheets in search of the next mating on paper. Instead, the emphasis is placed on stockmanship, visual appraisal, and practical knowledge—evaluating how the genetics we invest in will function, adapt, and perform within our system, supported by meaningful performance data rather than driven solely by it. Our goal is to produce cattle that work in real-world commercial and seedstock environments, where fertility, soundness, and longevity ultimately determine profitability.

The foundation of our program is maternal strength. We often place a premium on cows that may go unnoticed by most early in their career. They aren’t always flashy, but they are the kind that calve unassisted, breed back on time, maintain sound feet and udders, and remain productive year after year. These traits are not negotiable. Functional design—the basics—comes first, because without it, performance and data have little value. Our cattle are expected to add pounds efficiently, without creep, while maintaining a moderate, practical frame that thrives across a wide range of environments and management systems. We strive for optimum performance in an unassisted system so that our cattle can excel at every level of production.

This balanced approach allows us to offer bulls that are consistent, dependable, and structurally sound, while still providing access to progressive genetics that add value without sacrificing function. Bulls in The Back to The Basics Bull Sale are selected with one guiding question in mind:

“Will this bull make our customers more successful over the long term?”

By focusing on cattle that last, work, and adapt, we remain committed to offering genetics that are trusted for generations. That commitment is the reason behind this sale—and why, now more than ever, we believe in going **Back to The Basics**.



MJT CATTLE

ARE AVAILABLE IN EVERY PRICE RANGE TO SUIT EVERYONE'S NEEDS!

PAST YEARS SALE PRICES

28 Bulls
\$6000 - \$9500

45 Bulls
\$10,000 - \$14,000

38 Bulls
\$15,000 - \$19,000

4 Bulls
\$20,000+

ALL VIRGIN BULLS WITH NO FEET TRIMMED

ALL BULLS ARE FULLY VACCINATED, INCLUDING FUSOGARD FOR FOOTROT PREVENTION.

MJT CALVING EASE SCORES

We have spent a lot of years selecting for calving ease, and selecting for genetics that allow for calving ease without sacrificing performance. Many customers use our bulls on their first calvers. When we started the 'Back to the Basics' Bull Sale we made a system to help you when choosing your next heifer bull. When we grade the bulls, we are fairly conservative. Some of our customers with larger framed cattle successfully 'level up' as they get to know our program. Mick has always said, he won't sell a bull he wouldn't calve out himself. The system is based on the following...

BW in pounds

Consistency of sire's BW

Consistency of dam's BW

Consistency of calving ease of both sire & dam

★ Recommended for cows only

★★ Recommended for cows or larger framed heifers

★★★ Recommended for heifers

Always keep in mind 50% of your calf's BW relates back to his dam.

All Registered bulls have been Genetically tested for Parent Verification, genomic enhancement, and carrier status. For those requiring genetic testing data results are available online.



CATTLE REFERRAL PROGRAM

80% of our customers are repeat customers. We believe that there is no higher compliment than a customer referral. If you let us know that you have referred someone to our program, and they make a purchase we will give a 5% referral payment on their first year purchases. Referral names must be provided before the sale. Referral remuneration will be provided early spring after the lots are settled.

VOLUME DISCOUNTS

3 bulls will get you 3%

4 bulls will get you 4%

5 bulls will get you 5%

The discount will only apply to bulls paid for within 30 days of Invoice Sale Day.





SEASONED CATTLEMEN KNOW THAT THE MOST
ECONOMICALLY IMPORTANT TRAITS ARE THE

Maternal Fundamentals

FERTILITY, LONGEVITY, STRUCTURE,
SOUNDNESS, AND FLESHING ABILITY

regardless of breed

MJT CATTLE ARE BUILT ON MATERNAL STRENGTHS

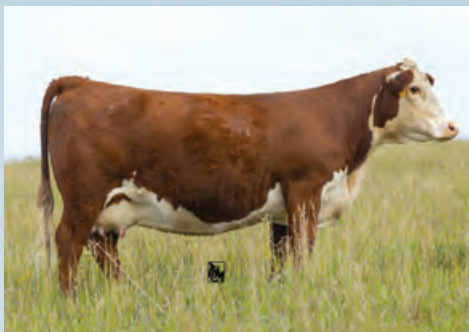
Trusted
FOR GENERATIONS...
BUILT ON *Maternal*
STRENGTH





FOR MORE THAN *80 Years* WE HAVE KEPT
TRUE TO OUR FAMILY VALUES





BEHIND EVERY ONE OF OUR *great* MJT SIRES,
THERE IS A *great* MAMA COW




**REF
SIRE**

BIG-GULLY 173D FOREFRONT 46J

**BW
102**

REG #: C03087301 | LLH 46J | DOB: 20-Feb-21

SIRE: NJW 79Z Z311 ENDURE 173D ET

KCF BENNETT ENCORE Z311 ET
BW 91H 100W RITA 79Z ET

DAM: PCL JADE 106A 46C

MHPH 521X ACTION 106A
PCL JADE 57T 31Y

Known here affectionately as "Leachman" this bull has been a great addition to our bull battery. He is a bull full of muscle and exhibits a "look at me" profile no matter where you see him. Despite his overall attractiveness, perhaps his best attribute is an exceptional foot. Big and deep heeled and perfect in its shape on all 4 corners. The offspring are marked solid and made solid with daughters showcasing a tight udder with moderate teat size. We like problem free and think you will too!



Dam of C Arlo 2135 ET

**REF
SIRE**

C ARLO 2135 ET

REG #: C03111842 | 2135 | DOB: 16-Jan-22

SIRE: LOEWEN GENESIS G16 ET

NJW 79Z Z311 ENDURE 173D ET
LOEWEN 77 48 MISS 344N 4RB42ET

DAM: C 88X NOTICE ME 1311 ET

NJW 98S R117 RIBEYE 88X ET
C NOTICE ME ET

The \$195,000 lead off from Colyer Herefords, purchased by Hoffman Ranch and Buck Cattle Co., Arlo is big boned, exemplary footed, and ideal in his pigmentation. His dam is the well-established C Notice Me and is profound in her phenotype and production record. We wanted a bull we could utilize that could add some look, pigmentation, and strong maternal traits while maintaining structure. Arlo is just that, this is his first offering, and we think they're pretty neat, with the females being even better. Nice numbered, short marked, but solid on the performance data and structure, these offspring have been consistently marked up with pigment.



Dam of Glenlees 39G Devout 38K

**REF
SIRE**

GLENLEES 39G DEVOUT 38K

**BW
87**

REG #: C03098040 | AHL 38K | DOB: 18-Feb-22

SIRE: MOHICAN 4013 UPLOAD 39G

INNISFAIL WHR X651/723 4013 ET
MOHICAN LUCKY LADY Z60

DAM: RVP 106A CAMEO GIRL 45C

MHPH 521X ACTION 106A
PCL QUEEN MAKER 118U 61Z

When we purchased Devout, we were looking for a well marked bull that could moderate our birth weights and was backed by a great cow family. We found him at Glenlees Farms and think he's been very complimentary in our breeding program. We are excited to see his daughter's performance come calving but have full faith based on his dam's production history. A former CWA Champion Female with her share of successful, and distinct, progeny, she's the kind that's prepotent and second to none. The offspring are darker red than most and exceptionally well balanced.

**REF
SIRE**

HAROLDSON'S JVJ ROYAL 24E

REG #: C03036068 | AFSY 24E | DOB: 20-Feb-17

BW
96

SIRE: **H BK CCC SR GAME CHANGER ET**

KJ HVH 33N REDEEM 485T ET
NJW 78P 63N LADYSPORT 51W ET

DAM: **HAROLDSON'S AD JESSICA 48Y 13B**

HAROLDSONS WLC RHINO ET 48Y
HAROLDSON'S WS JESSICA 4T 60X

Royal has flat out produced. Across the nation many breeders have put their trust in Royal and bred their best, as a result these breeders have sold many high sellers and retained some extremely high quality genetic gems. Our leading donor 606H, is herself a Royal daughter and we always appreciate every daughter we have when touring the pastures. A high seller in the 2024 sale went to the Franks in Montana where he bred extremely well and went on to win the NILE Stock Show in Billings. "Royal" is a household name in the breed and we are glad we had the opportunity to walk such a great breeding bull in our pastures.



**REF
SIRE**

PCL4013 KEVLAR 81K

REG #: C03093648 | DAWM 81K | DOB: 20-Mar-22

BW
104

SIRE: **NJW 98S DURANGO 44U**

EFBEEF TFL U208 TESTED X651 ET
INNISFAIL P230 T723

DAM: **PCL STARLET 44U ET 77A**

NJW 98S DURANGO 44U
C&T 122L STARLET 9N

Phantom Creek Livestock was known for raising exceedingly productive females in tougher terrain. When we saw Kevlar as a calf in their dispersal, knowing the environment they run cattle in, we took the opportunity to purchase him. Backed by the Starlet dam, a female with a great track record, this high, octane bull was used to inject additional middle, overall growth and performance, without sacrificing on fundamentals of maternal traits and structure. This bull has a remarkably large foot underneath him with a great heel and leg set to boot. You'll find his progeny soft middled, sound, and thick made.



**REF
SIRE**

YV 234F SILVER CREEK 48J

REG #: C03086613 | YV 48J | DOB: 30-Mar-21

BW
79

SIRE: **BR 213B FORTY CREEK 234F**

BR 58Y STANDARD 213B
BR 15Z LADY ET 153C

DAM: **YV 31A MS SILVER SUN ET 41F**

YV 30U MR STAN SUNSHINE ET 31A
YV 81N SILVER SKY LASS 7X

A few years ago we sought out a horned bull to rebuild our offering of horned genetics. As per our criteria, we needed an individual with a dam possessing udder quality and structural integrity, while he himself was sound, thick, with some muscle shape of his own. Silver Creek from the Nixdorf family checked these boxes. This is his first calf crop on offer, and we like them a lot. You'll find them soft made, smooth shouldered, and with some extra hip and rib to boot. If you're on the hunt for horned genetics, these sons should be on your list.





Dam of Lot 1

LOT 1

MJT 812K ROCKY 1M

BW 78 | Adj 205 673 | Jan 1 Wt 2000

REG #: C03118760 | MJT 1M | DOB: 26-Jan-24

SIRE: **MJT ROCKY 511G**

MLL 10Y ROCKY ET 225D

MJT MISS HOMEGROWN ET 103C

DAM: **MJT 24E MARIGOLD 812K**

HAROLDSON'S JVJ ROYAL 24E

MJT 117R MARIGOLD ET 216D

GE EPD | Hetero Polled | Parent Verified | Pigment: 100%R : 50%L CALVING EASE: ★★

A lower birth weight option in our Hereford offering 1M is out of a solid first calver that combines two great herd sires, Rocky and Royal, with our time-tested Marigold 216D donor. When we talk about stacking maternal strength, it doesn't get much more powerful than that. This darker marked bull boasts an admirable growth curve and a great carcass weight number showing that less lbs at birth doesn't mean less dollars in your pocket at weaning.

LOT 2

MJT 813K SILVER CREEK 2M

BW 78 | Adj 205 700 | Jan 1 Wt 2010

REG #: C03113567 | MJT 2M | DOB: 26-Jan-24

SIRE: **YV 234F SILVER CREEK 48J**

BR 213B FORTY CREEK 234F

YV 31A MS SILVER SUN ET 41F

DAM: **MJT 225D DIAMOND ET 813K**

MLL 10Y ROCKY ET 225D

HMS HI-CLIFFE 305A DIAMOND 64D

GE EPD | Hetero Polled | Parent Verified | Pigment: 100%R : 90%L CALVING EASE: ★★

This stout made, soft bodied, deep flank, and big footed individual is a lower birthweight, maternal master. This bull offer performance in a dark marked, moderate frame package. Backed by an extremely productive first calving Rocky daughter in terms of her actual production records 2M also has numbers ranking in the top 2% for Fertility and Maternal Productivity.



LOT 5

MJT 6J ROYAL 5M

BW 83 | Adj 205 737 | Jan 1 Wt 2070

REG #: C03115809 | MJT 5M | DOB: 30-Mar-24

SIRE: **HAROLDSON'S JVJ ROYAL 24E**

H BK CCC SR GAME CHANGER ET
HAROLDSON'S AD JESSICA 48Y 13B

DAM: **PCL 25Z CINDY 6J**

PCL ZIRCON 719T 25Z
PCL 4013 CINDY 45G

GE EPD | Homo Polled | Parent Verified | Pigment: 90%R : 50%L CALVING EASE: ★

This bull is top end phenotypically and in his genomic profile. Out of a cow purchased from Phantom Creeks dispersal for her superior udder, she raised a moderate birthweight bull that presses down on the scale. Nice headed, stout made; while possessing the exceptional growth, dark pigmentation, and muscle shape we have come to expect of our Royal sire group.



LOT 6

MJT 17B ARLO 6M

BW 86 | Adj 205 778 | Jan 1 Wt 2015

REG #: C03114899 | MJT 6M | DOB: 26-Mar-24

SIRE: **C ARLO 2135 ET**

LOEWEN GENESIS G16 ET
C 88X NOTICE ME 1311 ET

DAM: **BLAIR'S NELLIE R117 ET 17B**

SHF RIB EYE M326 R117
NCX MISS JR NELLIE 528N

GE EPD | Polled | Parent Verified MSUDC | Pigment: 100%R : 100%L CALVING EASE: ★

A rare package here. One of the first Arlo sons to be marketed in Canada, backed by the Nellie cow family, this big goggled, short-marked individual is an extremely maternal specimen with top tier foot structure, muscle shape, and overall performance. It is rare that the genomics on a bull line up with their phenotype, however between his carcass merit, performance, and maternal indicators, and actual performance, it is few and far between that a bull this complete crosses a sale ring.

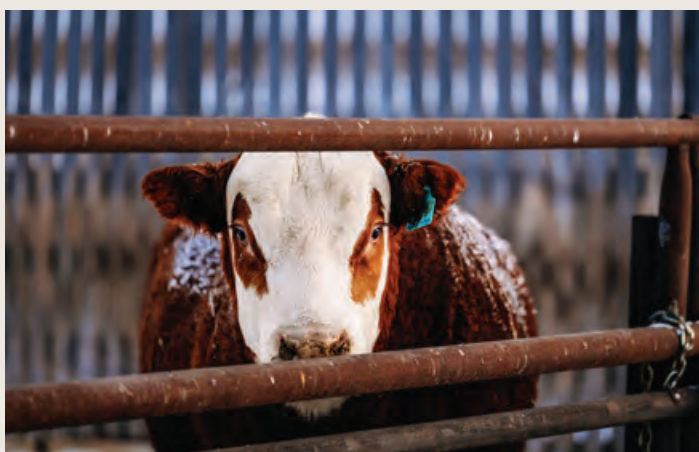


Dam of Lot 6





Dam of Lot 12



LOT 12			MJT 84J ARLO 12M	
BW 87	Adj 205 702	Jan 1 Wt 1990	REG #: C03115812 MJT 12M DOB: 01-Apr-24	
SIRE: C ARLO 2135 ET			LOEWEN GENESIS G16 ET C 88X NOTICE ME 1311 ET	
DAM: NCX MISS JAPALENO 84J			HAROLDSON'S TOTEM 200Z 5D WCC 163Z TEQUILA ROSE 712E	
GE EPD Homo Polled Parent Verified Pigment: 100%R : 100%L CALVING EASE: ★				

The maternal sister to this short-marked bull is a serious up and comer in the herd, and the dam has earned her place in a front pasture for tours. Slightly more moderate frame, this Arlo son is thick made throughout his skeleton, solid muscled, with a great head shape. He's maternally backed, but for those of you that are looking for a solid carcass EPD profile as well, make sure to look him up.

LOT 14			MJT 40C ARLO 14M	
BW 90	Adj 205 632	Jan 1 Wt 1895	REG #: C03114898 MJT 14M DOB: 01-Apr-24	
SIRE: C ARLO 2135 ET			LOEWEN GENESIS G16 ET C 88X NOTICE ME 1311 ET	
DAM: HAROLDSON'S JANE 48Y 40C			H PF WYARNO 3902 ET HAROLDSON'S JANE 29R 54W	
GE EPD Homo Polled Parent Verified Pigment: 80%R : 0%L CALVING EASE: ★				

Stout made, with hip and bone to spare, this guys dam has done well in maintaining a youthful udder and sound foot quality. If you like a bull whose muscle profile is carried out in a balanced manner throughout his skeleton without compromising on growth, structure, and performance, he's one to note.

LOT 17			MJT 43J ROYAL 17M	
BW 87	Adj 205 786	Jan 1 Wt 2080	REG #: C03113821 MJT 17M DOB: 02-Apr-24	
SIRE: HAROLDSON'S JVJ ROYAL 24E			H BK CCC SR GAME CHANGER ET HAROLDSON'S AD JESSICA 48Y 13B	
DAM: PCL 25Z REL LADY 43J			PCL ZIRCON 719T 25Z PCL 3D REAL LADY 87G	
GE EPD Homo Polled Parent Verified Pigment: 100%R : 100%L CALVING EASE: ★				

One of the highest ADG bulls in our Hereford offering, this growth-oriented bull is long spined, dark made and well pigmented. Backed by a strong uddered dam from the Phantom Creek dispersal, as well as the maternal master, "Royal", this bull is well balanced to offer both pounds and replacements.





LOT 18			MJT 606H ARLO ET 18M	
BW 90	Adj 205 603	Jan 1 Wt 2010	REG #: C03115814 MJT 18M DOB: 03-Apr-24	
SIRE: C ARLO 2135 ET			LOEWEN GENESIS G16 ET C 88X NOTICE ME 1311 ET	
DAM: MJT 17B QUEEN NELLIE 606H			HAROLDSON'S JVJ ROYAL 24E BLAIR'S NELLIE R117 ET 17B	
GE EPD Polled Parent Verified Pigment: 100%R : 0%L CALVING EASE: ★				

An Arlo son, backed by our great 606H donor cow which is a maternal sister to Lot 6, this bull has maternal quality and structure to spare. Clean sheathed, exceptional heel, and well muscled he checks a lot of boxes. The first son of this dam walks the Church Ranch with positive reports coming from them post breeding season. We love this pairing and are sure several will be marked high on many lists.

LOT 19			MJT 8F ROYAL 19M	
BW 93	Adj 205 682	Jan 1 Wt 2080	REG #: C03114207 MJT 19M DOB: 03-Apr-24	
SIRE: HAROLDSON'S JVJ ROYAL 24E			H BK CCC SR GAME CHANGER ET HAROLDSON'S AD JESSICA 48Y 13B	
DAM: HMS HICLIFFE 305 FIRE & ICE 8F			TCF JVJ 11X THE GOODS 305A COPPERTONE 1W 164X OMEGA 8Z	
GE EPD Homo Polled Parent Verified Pigment: 100%R : 100%L CALVING EASE: ★				



This Royal son is a full brother to one we sold last year. The Royal sire group has left us with truly exceptional females that have progressed our Hereford herd, as well as many others, exponentially. With a strong dam behind him, this dark red, thick made growthy bull is thick made, true on all four corners, and has an exceptional foot on him.

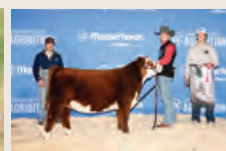




LOT 22			MJT 606H ARLO ET 22M	
BW 100	Adj 205 819	Jan 1 Wt 2015	REG #: C03115817 MJT 22M DOB: 05-Apr-24	
SIRE: C ARLO 2135 ET			LOEWEN GENESIS G16 ET C 88X NOTICE ME 1311 ET	
DAM: MJT 17B QUEEN NELLIE 606H			HAROLDSON'S JVJ ROYAL 24E BLAIR'S NELLIE R117 ET 17B	
GE EPD Hetero Polled Parent Verified Pigment: 0%R : 100%L CALVING EASE: ★				



Dam of Lot 22



Full Sister of Lot 22



Maternal Brother of Lot 22

Another Arlo x 606H flushmate, 22M is deep flanked, wide made, exceptional in his muscle layout, and clean through his sheath. If you like cattle with a bit of softness while retaining some presence and look, this prospect deserves to be on your list.



Dam of Lot 24

LOT 24			MJT 216D ARLO ET 24M	
BW 95	Adj 205 570	Jan 1 Wt 1905	REG #: C03115819 MJT 24M DOB: 05-Apr-24	
SIRE: C ARLO 2135 ET			LOEWEN GENESIS G16 ET C 88X NOTICE ME 1311 ET	
DAM: MJT 117R MARIGOLD ET 216D			MHPH 521X ACTION 106A MJT 9N HARMONY 117R	
GE EPD Hetero Polled Parent Verified Pigment: 100%R : 100%L CALVING EASE: ★				

A different flush offering here, this Arlo is out of none other than our matriarch donor "Marigold". A cow that we've retained every daughter on, she's earned her spot in the donor pen by putting high quality individuals in our replacement and sale pens year after year. Good pigment, a great hip, and some extra spine make this long-made bull a highly predictable breeding option.

LOT 25 MJT 606H ARLO ET 25M

BW 93 | Adj 205 616 | Jan 1 Wt 2005 | REG #: C03115820 | MJT 25M | DOB: 05-Apr-24

SIRE: **C ARLO 2135 ET**

LOEWEN GENESIS G16 ET

C 88X NOTICE ME 1311 ET

DAM: **MJT 17B QUEEN NELLIE 606H**

HAROLDSON'S JVJ ROYAL 24E

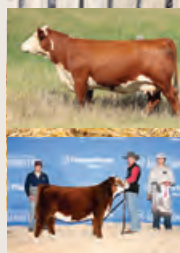
BLAIR'S NELLIE R117 ET 17B

GE EPD | Homo Polled | Parent Verified | Pigment: 100%R : 100%L CALVING EASE: ★

This is a bull we decided to utilize in covering a small group of cows this year post-AI. Another Arlo x 606H, there isn't a lot we don't enjoy about this bull. Extremely complete, not only is this bull good footed with a ton of heel, he's also nice fronted, bold middled, and wide throughout. Add to that a solid muscle pattern and that 606H dam and you have quite the package.



Dam of Lot 25 and full sister of Lot 25



LOT 28 MJT 216D SILVER CREEK ET 28M

BW 95 | Adj 205 668 | Jan 1 Wt 1945 | REG #: C03116605 | MJT 28M | DOB: 08-Apr-24

SIRE: **YV 234F SILVER CREEK 48J**

BR 213B FORTY CREEK 234F

YV 31A MS SILVER SUN ET 41F

DAM: **MJT 117R MARIGOLD ET 216D**

MHPH 521X ACTION 106A

MJT 9N HARMONY 117R

GE EPD | Horned | Parent Verified | Pigment: 30%R : 100%L CALVING EASE: ★



Dam of Lot 28



Maternal Sister of Lot 28

This fellow here is our Marigold donors own natural calf. Backed by the maternally oriented Silver Creek sire, this well-balanced individual is stout made, extremely athletic, and just solid throughout.





LOT 29

MJT 606H DEVOUT ET 29M

BW 104 | Adj 205 783 | Jan 1 Wt 1970

REG #: C03122765 | MJT 29M | DOB: 05-Apr-24

SIRE: **GLENLEES 39G DEVOUT 38K**

MOHICAN 4013 UPLOAD 39G

RVP 106A CAMEO GIRL 45C

DAM: **MJT 17B QUEEN NELLIE 606H**

HAROLDSON'S JVJ ROYAL 24E

BLAIR'S NELLIE R117 ET 17B

GE EPD | Polled | Parent Verified | Pigment: 0%R : 0%L

CALVING EASE: ★

This heavy hitter is the natural calf of our 606H donor that year. With Cameo Girl 45C on the top side of the pedigree and Nellie x Royal on the bottom, he's so rich in maternal quality. Slightly bigger framed, performance-oriented individual we love his rib, length of spine and how balanced he is for a growth oriented, high-octane bull.



LOT 30

MJT 668H SILVER CREEK 30M

BW 82 | Adj 205 618 | Jan 1 Wt 1875

REG #: C03115106 | MJT 30M | DOB: 08-Apr-24

SIRE: **YV 234F SILVER CREEK 48J**

BR 213B FORTY CREEK 234F

YV 31A MS SILVER SUN ET 41F

DAM: **MJT 6011 AIMEE ET 668H**

BR BELLE AIR 6011

MJT 28Z AIMEE 16B

GE EPD | Hetero Polled | Parent Verified | Pigment: 100%R : 100%L CALVING EASE: ★★

30M is a dark, well pigmented calving-ease oriented bull stemming from a strong Belle Air daughter. Big boned, thick haired, and solid in his overall balance, this guy is a well rounded and versatile option.



LOT 42

MJT 16B KEVLAR 42M

BW 95 | Adj 205 788 | Jan 1 Wt 2080

REG #: C03115828 | MJT 42M | DOB: 13-Apr-24

SIRE: **PCL 4013 KEVLAR ET 81K**

INNISFAIL WHR X651/723 4013 ET

PCL STARLET 44U ET 77A

DAM: **MJT 28Z AIMEE 16B**

HPH 145R AVATAR 5U

MJT 209U PROSPECT 28Z

GE EPD | Hetero Polled | Parent Verified | Pigment: 100%R : 100%L CALVING EASE: ★

42M is one for the lovers of a bull that has loads of middle, that softness and loose hided look that bespeaks fleshing ability. We love a bull that pushes the envelope for growth and performance like this fellow while being big boned, long bodied and structurally correct in his leg and heel. Not to mention his maternal sister is a top end replacement in the heifer pen.



LOT 44

MJT 740J SILVER CREEK 44M

BW 93 | Adj 205 601 | Jan 1 Wt 1925

REG #: C03115107 | MJT 44M | DOB: 13-Apr-24

SIRE: **YV 234F SILVER CREEK 48J**

BR 213B FORTY CREEK 234F

YV 31A MS SILVER SUN ET 41F

DAM: **MJT 74F KENEDY 740J**

HPH 180B FONZY 74F

MJT KENEDY 220D

GE EPD | Hetero Polled | Parent Verified | Pigment: 30%R : 90%L CALVING EASE: ★

With foot quality, bone, and doability, 44M is an example of what happens when you take a good working cow and breed her to a complementary bull. Soft-made, expressive in his rib, and long bodied. Who doesn't love a short-marked bull with some extra bone.



LOT 45 MJT 513G SILVER CREEK 45M

BW 94 | Adj 205 688 | Jan 1 Wt 2020 | REG #: C03115114 | MJT 45M | DOB: 13-Apr-24

SIRE: **YV 234F SILVER CREEK 48J**

BR 213B FORTY CREEK 234F
YV 31A MS SILVER SUN ET 41F

DAM: **MJT 5U REBA ET 513G**

HPH 145R AVATAR 5U
MJT 125S REBA 9Z

A solid producer created this hairy individual. Big hiped and big based. This horned bull has enough grow and shape to make him an overall powerfully put together breeding piece. The cherry on top is that he does so while maintaining smoothness through his shoulder and shape throughout with a distinct "herd bull look"

GE EPD | Horned | Parent Verified | Pigment: 0%R : 0%L | CALVING EASE: ★





Dam of Lot 46

LOT 46

MJT 509G KEVLAR 46M

BW 97 | Adj 205 720 | Jan 1 Wt 2100

REG #: C03115830 | MJT 46M | DOB: 14-Apr-24

SIRE: **PCL 4013 KEVLAR ET 81K**

INNISFAIL WHR X651/723 4013 ET

PCL STARLET 44U ET 77A

DAM: **MJT 216D ROSIE 509G**

FCC 503W LINCOLN 3Z

MJT 117R MARIGOLD ET 216D

GE EPD | Homo Polled | Parent Verified | Pigment: 100%R : 100%L CALVING EASE: ★

This bull is one you can count on to produce high quality females without sacrificing performance and look in their male counterparts. Dark cherry, big hipped, and bold sprung in his rib, 46M is marked right, muscled up, and still got a "look at me" presence. Add to that backed by the great 509G female, and has some solid marbling, fertility, and maternal EPD values behind him, he's a good one.



Dam of Lot 47

LOT 47

MJT 64F DEVOUT 47M

BW 92 | Adj 205 632 | Jan 1 Wt 1965

REG #: C03115832 | MJT 47M | DOB: 13-Apr-24

SIRE: **GLENLEES 39G DEVOUT 38K**

MOHICAN 4013 UPLOAD 39G

RVP 106A CAMEO GIRL 45C

DAM: **GLENLEES BLR AG 27C NELLIE 64F**

NJW 73S 38W RIMROCK 27C ET

BNC GLENLEES 429 NELLIE 71D

GE EPD | Homo Polled | Parent Verified | Pigment: 50%R : 80%L CALVING EASE: ★

Here's a bull that is for the cattle folk that look for one with some extra length of body. 47M is darker red, marked with eyeliner around each eye, and backed by a top-level dam tracing back to the Hereford Champion of the World Female. Look this way to add some extra frame, look, and a strong top.

LOT 49 MJT 757J FOREFRONT 49M

BW 86 | Adj 205 811 | Jan 1 Wt 2095 | REG #: C03113824 | MJT 49M | DOB: 15-Apr-24

SIRE: **BIG-GULLY 173D FOREFRONT 46J** NJW 79Z Z311 ENDURE 173D ET
PCL JADE 106A 46C

DAM: **MJT 74F CINDY 757J** HPH 180B FONZY 74F
MJT 23Z CINDY 428F

GE EPD | Homo Polled | Parent Verified | Pigment: 15%R : 15%L CALVING EASE: ★

49M is a wide based, strong topped bull that reads as the easy keeping kind due to his overall soft look. Out of a strong Fonzy daughter, his strong maternal backing and lower birthweight isn't at the sacrifice of any performance as he boasts the highest ADG in our Hereford offering with his feedlot merit index and post weaning gain numbers in the top 30% of the breed.



LOT 52 MJT 701J SILVER CREEK 52M

BW 82 | Adj 205 681 | Jan 1 Wt 1985 | REG #: C03115108 | MJT 52M | DOB: 16-Apr-24

SIRE: **YV 234F SILVER CREEK 48J** BR 213B FORTY CREEK 234F
YV 31A MS SILVER SUN ET 41F

DAM: **MJT 74F DELTA 701J** HPH 180B FONZY 74F
MJT 102C DELTA 307E

GE EPD | Horned | Parent Verified | Pigment: 90%R : 95%L CALVING EASE: ★★

This horned bull stems from a strong cow making her way to the donor pen this coming year. She had a great bull in the sale last year and a superb heifer in this year's replacement pen that brought \$12,000 to McLennan Creek Herefords for half. Easy calving, a great foot and loose hided with loads of rib. If you like your horned bulls with some extra width and great maternal traits, add this guy to your list.



Dam of Lot 52

LOT 53 MJT 607H KEVLAR 53M

BW 88 | Adj 205 705 | Jan 1 Wt 1990 | REG #: C03115833 | MJT 53M | DOB: 16-Apr-24

SIRE: **PCL 4013 KEVLAR ET 81K** INNISFAIL WHR X651/723 4013 ET
PCL STARLET 44U ET 77A

DAM: **MJT 24E JADE 607H** HAROLDSON'S JVJ ROYAL 24E
ANL 80C JADE 33Z 93E

GE EPD | Homo Polled | Parent Verified | Pigment: 100%R : 100%L CALVING EASE: ★

A moderate birthweight bull with a solid gain leading to a strong weaning weight, good pigment, and a great foot. We like bulls' stout with solid muscle. The fact that 53M does this while also maintaining an admirable amount of balance is the cherry on top. For those that pay attention to pedigrees it's also important to note that his dam is a solid Royal daughter, renowned for their udder quality.



Dam of Lot 53

LOT 57 MJT 707J NORTHBOUND 57M

BW 110 | Adj 205 738 | Jan 1 Wt 2020 | REG #: C03113828 | MJT 57M | DOB: 20-Apr-24

SIRE: **HPH 180B FONZY 74F** HPH 10Y BODACIOUS 180B
HPH 73W ROYALTY 77Z

DAM: **MJT CARMELA ET 707J** ANCARES FORC BOOMER 22 TE
ANITAS REVOLUTION 3

GE EPD | Homo Polled | Parent Verified | Pigment: 100%R : 100%L CALVING EASE: ★

57M is a bull for those looking for some extra jam in a slightly more moderate package, out of a highly productive female we obtained as an embryo from Uruguay, he packs punch. Soft made, extremely sound and thick made throughout his skeleton, there's some unique pieces here to add value to this prospective herd sire who has nice pigmentation.



Maternal Brother of Lot 57





LOT 58 MJT 756J FOREFRONT 58M

BW 82 | Adj 205 634 | Jan 1 Wt 1905 | REG #: C03113829 | MJT 58M | DOB: 20-Apr-24

SIRE: **BIG-GULLY 173D FOREFRONT 46J** NJW 79Z Z311 ENDURE 173D ET
PCL JADE 106A 46C

DAM: **MJT 74F CINDY 765J** HPH 180B FONZY 74F
MJT 495Y CINDY 225D

GE EPD | Homo Polled | Parent Verified | Pigment: 100%R : 100%L CALVING EASE: ★★

Another low birthweight individual here, 58M is a dark red, highly pigmented option for those that admire a bold sprung rib and big top. We used both Forefront and Fonzy to inject leg and foot quality along with some growth, and combining those two lines reared the expected result. Great leg and foot, along with exemplary muscle shape.



LOT 59 MJT 708J FOREFRONT 59M

BW 98 | Adj 205 728 | Jan 1 Wt 2065 | REG #: C03113830 | MJT 59M | DOB: 20-Apr-24

SIRE: **BIG-GULLY 173D FOREFRONT 46J** NJW 79Z Z311 ENDURE 173D ET
PCL JADE 106A 46C

DAM: **MJT 225D NELLIE 708J** MLL 10Y ROCKY ET 225D
BLAIR'S 358C NELLIE ET 710E

GE EPD | Hetero Polled | Parent Verified | Pigment: 70%R : 70%L CALVING EASE: ★

59M combines a few greats, a Nellie cow out of the 2018 World Champion Rocky, combine that with the growth and muscle that Forefront brings to the table and you get this. Thick made with our kind of muscle shape, this guy puts maternal, muscle, and structural quality along with some solid carcass and performance numbers in one unique package.



LOT 60 MJT 623H KEVLAR 60M

BW 94 | Adj 205 656 | Jan 1 Wt 1945 | REG #: C03115835 | MJT 60M | DOB: 20-Apr-24

SIRE: **PCL 4013 KEVLAR ET 81K** INNISFAIL WHR X651/723 4013 ET
PCL STARLET 44U ET 77A

DAM: **MJT NELLIE 623H** HAROLDSON'S JVJ ROYAL 24E
BLAIR'S NELLIE R117 ET 14B

GE EPD | Homo Polled | Parent Verified | Pigment: 100%R : 100%L CALVING EASE: ★

A strong Kevlar son out of a good Nellie x Royal daughter that's continued to prove herself. Top tier udder and teat quality with a great foot. This bull is extremely attractive through his front third, big middled, with a square hip and some muscle to boot. To top it off he offers good pigmentation, a great skull shape, and top 2% fertility and maternal productivity numbers.



Maternal Brother of Lot 60





LOT 62 MJT 222D SILVER CREEK 62M

BW 90 | Adj 205 672 | Jan 1 Wt 2000 | REG #: C03115116 | MJT 62M | DOB: 21-Apr-24

SIRE: **YV 234F SILVER CREEK 48J**

DAM: **MJT 17B RUBY 222D**

BR 213B FORTY CREEK 234F
YV 31A MS SILVER SUN ET 41F
JNHR RED STAN 128A
MJT 415Y AIMEE 17B

Strong horned bull here with a solid growth curve. Thick topped and wide based, rarely is it you get a bull with the amount of top, overall width and muscle in a balanced package. His moms been a producer, and his smooth shoulder set should attract the eye of the producers who enjoy calves that just pop out.

GE EPD | Horned | Parent Verified | Pigment: 100%R : 100%L | CALVING EASE: ★

MJT HEREFORD BULLS





LOT 63			MJT 7G KEVLAR 63M	
BW 86	Adj 205 745	Jan 1 Wt 2095	REG #: C03115836 MJT 63M DOB: 21-Apr-24	
SIRE: PCL 4013 KEVLAR ET 81K			INNISFAIL WHR X651/723 4013 ET PCL STARLET 44U ET 77A	
DAM: MLL 3786 POLLYANNA ET 7G			UPS SENSATION 3786 ET MJT MISS POLLY 125S	
GE EPD Hetero Polled Parent Verified Pigment: 100%R : 100%L CALVING EASE: ★				

More moderate birthweight with some serious pounds soon thereafter. Seriously stout, short marked, good pigmented, and soft made. This bulls extremely complete. He's big middled, big topped, and big footed in a middle of the road frame score. This type of bull is extremely diverse from retaining moderate sized females or male counterparts that push down the scale at all stages.





Dam of Lot 64

LOT 64 MJT 665H SILVER CREEK 64M

BW 94 | Adj 205 649 | Jan 1 Wt 1900 | REG #: C03115838 | MJT 64M | DOB: 22-Apr-24

SIRE: **YV 234F SILVER CREEK 48J**

DAM: **MJT 6011 AIMEE ET 665H**

BR 213B FORTY CREEK 234F
YV 31A MS SILVER SUN ET 41F
BR BELLE AIR 6011
MJT 28Z AIMEE 16B

Real solid horned option going back to the highly utilized Belle Air, sons of a full brother to this guys tight uddered dam just topped the Hirsche Herefords Bull sale recently, and you can see for yourself why. Soft made, thick, and attractive fronted with plenty of bone and base without pushing the envelope for birthweight.

GE EPD | Horned | Parent Verified | Pigment: 60%R : 100%L | CALVING EASE: ★

MJT HEREFORD BULLS





LOT 69			MJT 840K DEVOUT 69M	
BW 84	Adj 205 567	Jan 1 Wt 1935	REG #: C03115850 MJT 69M DOB: 22-Apr-24	
SIRE: GLENLEES 39G DEVOUT 38K			MOHICAN 4013 UPLOAD 39G RVP 106A CAMEO GIRL 45C HAROLDSON'S JVJ ROYAL 24E JDH MS 45C MILES 6077 46F ET	
DAM: MJT 24E MS MILES 840K				
GE EPD Homo Polled Parent Verified Pigment: 90%R : 50%L CALVING EASE: ★★				

69M is a low birthweight bull that has done well as a heifers first calf. Short marked with eyeliner on both eyes, he's extremely attractive in his makeup. Stout hipped, moderate framed with plenty of bone, if you love balance with some look here's your guy.





LOT 73 MJT 604H FOREFRONT 73M

BW 92 | Adj 205 673 | Jan 1 Wt 2010 | REG #: C03113833 | MJT 73M | DOB: 24-Apr-24

SIRE: **BIG-GULLY 173D FOREFRONT 46J** NJW 79Z Z311 ENDURE 173D ET
PCLJADE 106A 46C
DAM: **MJT 24E XKEONA 604H** HAROLDSON'S JVJ ROYAL 24E
RSK SCK 190Z MS XKEONA ET 381D

GE EPD | Homo Polled | Parent Verified | Pigment: 100%R : 40%L CALVING EASE: ★

Balanced, bold ribbed, and heavy muscled. Fans of a soft made, extremely stout made breeding piece can add this one to their list. For those individuals that feed out their own calves, note his post weaning growth curve. Backed by a Royal daughter and combining him with the great Endure bloodline Forefront possesses is sure to leave females that maintain optimal udder structure and teat size while being productive.

LOT 76 MJT 11G SILVER CREEK 76M

BW 89 | Adj 205 672 | Jan 1 Wt 1920 | REG #: C03115109 | MJT 76M | DOB: 25-Apr-24

SIRE: **YV 234F SILVER CREEK 48J** BR 213B FORTY CREEK 234F
YV 31A MS SILVER SUN ET 41F
DAM: **BLAIR'S 358C 381D XKEONA 11G** TH 403A 475Z PIONEER 358C ET
RSK SCK 190Z MS XKEONA ET 381D

GE EPD | Horned | Parent Verified | Pigment: 100%R : 100%L CALVING EASE: ★



This moderate framed, highly pigmented bull is one that you like the rib, muscle and hip he puts on his frame. Lower birthweight with great ADG is a hallmark for a bull that has a lot of important pieces for the cattle producer that doesn't want to touch them at calving but wants the dollars when he takes them to the market.



LOT 78 MJT 408F SILVER CREEK 78M

BW 92 | Adj 205 700 | Jan 1 Wt 1970 | REG #: C03115111 | MJT 78M | DOB: 25-Apr-24

SIRE: **YV 234F SILVER CREEK 48J**

BR 213B FORTY CREEK 234F
YV 31A MS SILVER SUN ET 41F

DAM: **MJT 105C RUBY 408F**

JNHR RED STAN 128A
MJT 495Y CINDY 105C

GE EPD | Hetero Polled | Parent Verified | Pigment: 100%R : 100%L CALVING EASE: ★

If you like them dark, heavy pigmented, and long made, this guy is going to catch your eye. Optimal foot quality, square hipped, and bold ribbed, 78M is one you love through his shoulder and back through his middle third. His dam is a strong, soft made, highly productive type that throws docility in spades.



LOT 79 MJT 710J SILVER CREEK 79M

BW 96 | Adj 205 689 | Jan 1 Wt 2020 | REG #: C03115112 | MJT 79M | DOB: 26-Apr-24

SIRE: **YV 234F SILVER CREEK 48J**

BR 213B FORTY CREEK 234F
YV 31A MS SILVER SUN ET 41F

DAM: **MJT 6011 AIMEE ET 710J**

BR BELLE AIR 6011
MJT 28Z AIMEE 16B

GE EPD | Horned | Parent Verified | Pigment: 100%R : 100%L CALVING EASE: ★

A horned bull with some extra growth and punch. This bull offers some frame and bone without sacrificing overall softness, muscle and hip. Backed by a strong Belle Air daughter with a good udder system, he offers both performance and maternal traits.



LOT 84 MJT 755J SILVER CREEK 84M

BW 84 | Adj 205 625 | Jan 1 Wt 1875 | REG #: C03115113 | MJT 84M | DOB: 28-Apr-24

SIRE: **YV 234F SILVER CREEK 48J**

BR 213B FORTY CREEK 234F
YV 31A MS SILVER SUN ET 41F

DAM: **MJT 1F RUBY 755J**

MAST-R FRANCHISE 1F
MJT 17B RUBY 222D

GE EPD | Hetero Polled | Parent Verified | Pigment: 100%R : 100%L CALVING EASE: ★★

Short marked, low birthweight option here. Darker red, loose hided, and soft made this bull packs some punch for being a moderate framed, heifer option. His moms a tight uddered, big middled female with great teat placement and size.



LOT 88 MJT 20G DEVOUT 88M

BW 86 | Adj 205 634 | Jan 1 Wt 1910 | REG #: C03115854 | MJT 88M | DOB: 01-May-24

SIRE: **GLENLEES 39G DEVOUT 38K**

MOHICAN 4013 UPLOAD 39G
RVP 106A CAMEO GIRL 45C

DAM: **MLL 225D LORI ET 20G**

MLL 10Y ROCKY ET 225D
MLL 028 LORI 30A

GE EPD | Homo Polled | Parent Verified | Pigment: 100%R : 50%L CALVING EASE: ★★

Middle of the road frame, with great muscle expression and a bold top, 88M has a lot to offer. He has a great shoulder, bold rib, and eye liner on both eyes. Stemming from a strong Rocky daughter, this darker option is top 10% in fertility, maternal productivity, and maternal calving ease while still offering some carcass merit in terms of his marbling.

LOT 91**MJT 667H DEVOUT 91M**

BW 85	Adj 205 667	Jan 1 Wt 1930	REG #: C03115857 MJT 91M DOB: 02-May-24
----------	----------------	------------------	---

SIRE: GLENLEES 39G DEVOUT 38K

MOHICAN 4013 UPLOAD 39G

RVP 106A CAMEO GIRL 45C

DAM: MJT 646 POLLY ET 667H

CHURCHILL ROCK 646D ET

MJT MISS POLLY 125S

GE EPD | Hetero Polled | Parent Verified | Pigment: 75%R : 50%L CALVING EASE: ★★

Dark red, moderate in both birthweight and frame, and short marked, 91M is one for those that like rib, muscle and top in a compact package. His dam is a great uddered, Churchill Rock daughter, and a maternal sister to the 2018 Champion of the World.

*Dam of Lot 91***LOT 92****MJT 617H FOREFRONT 92M**

BW 82	Adj 205 700	Jan 1 Wt 2005	REG #: C03113836 MJT 92M DOB: 02-May-24
----------	----------------	------------------	---

SIRE: BIG-GULLY 173D FOREFRONT 46J

NJW 79Z Z311 ENDURE 173D ET

PCL JADE 106A 46C

DAM: MJT 225D HARMONY ET 617H

MLL 10Y ROCKY ET 225D

MJT 9N HARMONY 117R

GE EPD | Hetero Polled | Parent Verified | Pigment: 100%R : 100%L CALVING EASE: ★★

92M combines low birthweight with performance and growth. Smooth shouldered but big ribbed, thick topped, and deep sided. When it comes to muscle shape and herd bull look this guy doesn't slouch either. His dams a maternal sister to our Marigold donor out of Rocky, the 2018 World Champion. His scrotal, fertility, and maternal productivity EPDs are all top 2-10% with marbling and post weaning gain in the top 25%.

*Maternal Brother of Lot 92*



LOT 95

MJT 216D ARLO ET 95M

BW 70 | Adj 205 699 | Jan 1 Wt 1890 | REG #: C03130355 | MJT 95M | DOB: 04-May-24

SIRE: **C ARLO 2135 ET**

LOEWEN GENESIS G16 ET

C 88X NOTICE ME 1311 ET

DAM: **MJT 117R MARIGOLD ET 216D**

MHPH 521X ACTION 106A

MJT 9N HARMONY 117R

GE EPD | Homo Polled | Parent Verified | Pigment: 0%R : 0%L | CALVING EASE: ★★

A low birthweight Arlo son with an impressive weaning weight, 95M offers muscle shape, some rib and hip in a middle of the road framed package. Backed by our Marigold donor, who's known for the daughters she leaves, we expect nothing but good from this mating. Superior foot quality, maternal traits, and look all in one.



LOT 100

MJT 216D ARLO ET 100M

BW 92 | Adj 205 637 | Jan 1 Wt 1950 | REG #: C03115859 | MJT 100M | DOB: 05-May-24

SIRE: **C ARLO 2135 ET**

LOEWEN GENESIS G16 ET

C 88X NOTICE ME 1311 ET

DAM: **MJT 117R MARIGOLD ET 216D**

MHPH 521X ACTION 106A

MJT 9N HARMONY 117R

GE EPD | Horned | Parent Verified | Pigment: 100%R : 100%L | CALVING EASE: ★

We're always excited when we can inject some really cool new breeding into the horned gene pool. That's what 100M is, out of our Action daughter, Marigold, crossed with the Notice Me female in Arlo, we like what he has to offer in terms of leaving highly predictable replacements. Long bodied, good muscled, with a thick top while retaining a smooth shoulder. When you can get a pigmented bull like this that's something different, it's worth taking a look at.



LOT 105

MJT 761J FOREFRONT 105M

BW 94 | Adj 205 677 | Jan 1 Wt 2005 | REG #: C03113838 | MJT 105M | DOB: 09-May-24

SIRE: **BIG-GULLY 173D FOREFRONT 46J**

NJW 79Z Z311 ENDURE 173D ET

PCL JADE 106A 46C

DAM: **MJT 74F STACEY 761J**

HPH 180B FONZY 74F

ANL 17A STACEY 3536A 122D

GE EPD | Hetero Polled | Parent Verified | Pigment: 100%R : 90%L | CALVING EASE: ★

105M is another Forefront x Fonzy cross. He's maintained a moderate frame size, while weaning off at a nice spot. Big footed, big boned, and bold topped, when you get one soft made with muscle shape and look like this guy, you can't help but be happy. In typical Fonzy fashion, the dam is great at the basics, tight uddered, good footed, and hard working but breeding back.



LOT 108

MJT 606H DEVOUT 108M

BW 90 | Adj 205 738 | Jan 1 Wt 1910 | REG #: C03115863 | MJT 108M | DOB: 10-May-24

SIRE: **GLENLEES 39G DEVOUT 38K**

MOHICAN 4013 UPLOAD 39G

RVP 106A CAMEO GIRL 45C

DAM: **MJT 17B QUEEN NELLIE 606H**

HAROLDSON'S JVJ ROYAL 24E

BLAIR'S NELLIE R117 ET 17B

GE EPD | Homo Polled | Parent Verified | Pigment: 95%R : 60%L | CALVING EASE: ★

Middle of the road birthweight but weaning off at the higher end of our offering, 108M is the natural calf off our 606H donor cow. We love his dark red colour, skull shape, and smooth shoulder while retaining some muscle shape. Combining the great Cameo Girl and Nellie cow families is a highly predictable maternal dream.

LOT 113 MJT 93E KEVLAR 113M

BW 78 | Adj 205 580 | Jan 1 Wt 1940 | REG #: C03115117 | MJT 113M | DOB: 29-May-24

SIRE: **PCL 4013 KEVLAR ET 81K**

INNISFAIL WHR X651/723 4013 ET
PCL STARLET 44U ET 77A

DAM: **ANL 80C JADE 33Z 93E**

ANL 17A HI TECH 58W 80C
ANL 425X 105U JADE 33Z

GE EPD | Hetero Polled | Parent Verified | Pigment: 100%R : 100%L CALVING EASE: ★★

Low birthweight, heavy pigmented bull here. Long spined, good topped with a great tailhead set, 113M is a strong heifer safe option. The dam has retained a good udder structure throughout her tenure here and we're excited to have Kevlar crossed with her to add the extra foot middle and bone that he does.



LOT 114 MJT 14B SILVER CREEK 114M

BW 84 | Adj 205 622 | Jan 1 Wt 1890 | REG #: C03114897 | MJT 114M | DOB: 01-Jun-24

SIRE: **YV 234F SILVER CREEK 48J**

BR 213B FORTY CREEK 234F
YV 31A MS SILVER SUN ET 41F

DAM: **BLAIR'S NELLIE R117 ET 14B**

SHF RIB EYE M326 R117
NCX MISS JR NELLIE 528N

GE EPD | Hetero Polled | Parent Verified | Pigment: 100%R : 100%L CALVING EASE: ★★

The latest born bull in the offering, 114M is a low birthweight breeding piece that injects the great Nellie cow line into the horned genetic pool. Moderate framed, well muscled, with a great foot and attractive look.



Dam of Lot 114





Dam of Collins El Chapo 2101



**REF
SIRE**

COLLINS EL CHAPO 2101

BW
66

REG #: 2242971 | FWT 1J | DOB: 1-Jan-21

SIRE: **SCHIEFELBEIN SHOWMAN 338**

SCHIEFELBEIN ATTRACTIVE 4565
FROSTY ELBA 3745

DAM: **HF MAYFLOWER 191Z**

HFTIGER 5T
HF MAYFLOWER 78P

What a great story El Chapo has left at MJT! When we first saw a picture of him, we quite honestly didn't know who Rio Grande Angus which wasn't maybe all that surprising as the ranch is past Sexsmith AB and our herd bull travels hadn't taken us that far North in a long time. Despite that and the fact it is an 8hr drive we had two trusted friends stop to take a look and both reported back that he was better than his picture. Since then, we have made friends with Clint and Anna and their highly talented daughter Faith who worked with us last year. El Chapo has been a very successful breeding piece here at MJT. He is the rare "no holes" bull. Probably the best numbered herd sire we own, heifer friendly birth weights, and an impeccable foot. His offspring have been highly sought after with sons a favourite in last years sale.

**REF
SIRE**

BROOKING RENOVATION 1019

BW
65

REG #: 2199352 | JSTN 19J | DOB: 12-Jan-21

SIRE: **S A V RENOVATION 6822**

S A V RENOWN 34391
S A V MADAME PRIDE 0151

DAM: **BROOKING BEAUTY 8059**

ELLINGSON TOP SHELF 5050
TLA BEAUTY 6R

Here's a bull that commands your attention that was used successfully on heifers and has left us a very strong set of calves. A bull that Justin recommended to us and has not disappointed. He is a bull with the "Brooking" look of true Angus character and has bred very well here. He fits in with our "ideal" template for size and shape and type. His females have been stamped with an optimal Angus look and have hit the ground running this first year of their production. Please note the heifer friendly birth weights of his progeny as well.



**REF
SIRE**

HF IDOL 213K

BW
85

REG #: 2282066 | HAMI 213K | DOB: 3-Feb-22

SIRE: **SCHIEFELBEIN SHOWMAN 338**

SCHIEFELBEIN ATTRACTIVE 4565
FROSTY ELBA 3745

DAM: **HF EVENING TINGE 118Z**

HFTIGER 5T
HF EVENING TINGE 55N

A paternal brother to our El Chapo herd sire, this time backed by the designated Elite Evening Tinge 181Z dam from Hamilton Farms, Idol brings a ton of quality to the table. A calving ease specialist with top end performance to boot, this bull fits into a wide variety of places within the breed. Big topped, middle-of-the-road frame, and muscle shape in spades. The growth curve and versatility this herd sire offers are second to none. We're excited to see what his daughters have in store as many sit at the top of our replacement pen.





Dam of Landslide 560J and Landmark 557J

REF
SIRE

MJT 615E LANDSLIDE 560J

BW
85

REG #: 2245939 | MJT 560J | DOB: 28-Feb-21

SIRE: **BLAIRSWEST CHARLO 28E**

COLEMAN CHARLO 0256
BAR-E-L ERICA 74A

DAM: **MJT MISS CHEETAH 615E**

BAR-H CROSSFIRE 29C
MJT LUCY 16A

REF
SIRE

MJT 615E LANDMARK 557J

BW
84

REG #: 2245576 | MJT 557J | DOB: 26-Feb-21

SIRE: **BLAIRSWEST CHARLO 28E**

COLEMAN CHARLO 0256
BAR-E-L ERICA 74A

DAM: **MJT MISS CHEETAH 615E**

BAR-H CROSSFIRE 29C
MJT LUCY 16A

We have been big fans of these two full brothers 557J and 560J since weaning and they have only impressed us more as they matured. Retained in herd to propagate a few of the elite foundation animals in our herd. Their dam Cheetah has been a cow we hold with the highest regard around here. She is long as a train, has an exceptional udder and excellent foot quality. Her first calf was 1G and a full sister to these two bulls that has in her own right become an elite producer in our herd and a cover shot worthy female. These bulls are sired by none other than Charlo 28E that has done such a wonderful job here siring stout bulls and beautiful females. We have a ton of confidence in this genetic combination of Crossfire, Charlo and Erica 74A.

REF
SIRE

MJT 354H CROSSBOW 608K

BW
80

REG #: 2250597 | MJT 608K | DOB: 9-Jan-22

SIRE: **MJT CROSS BOW 838F**

BAR-H CROSSFIRE 29C
GREENWOOD ENVIOUS BLACKBIRD

DAM: **MJT 28E SOCIALITE 354H**

MJT CROSS BOW 838F
MERIT SOCIALITE 3048



Dam of MJT 354H Crossbow 608K

When we look at the hall marks of a great bull, it starts with the females behind him. With Envious Blackbird in the top pedigree, Socialite and Bar-E-L Erica 74A in the bottom, this bull is maternally stacked. His dam Socialite 354H is often a favourite on farm tours and prepotent for producing our type of cattle. We have used him on many heifers with no problems, and the calves stay moderate while putting on muscle and pressing down on the scale at each evaluation point in their life. The sisters have been hits with the first ever on offer to sell for \$24,000 to Golden Oak Livestock, and the daughters, top prospects. We think these sons will leave top end progeny in both gender pools.





Full Sister of Lot 202



Dam of Lot 203

LOT 202

MJT 547J GLACIER 202M

BW 92 | Adj 205 784 | Jan 1 Wt 2055

REG #: 2377258 | MJT 202M | DOB: 26-Mar-24

SIRE: **COLEMAN GLACIER 041**

S A V RENOWN 3439

COLEMAN DONNA 439 OSF

DAM: **BLAIR'S 2408 SARITA 547J**

COSENZA DON ROBERTO 338 T/E

LAFF 2408 SARITA CREDITO-FIV-

AngusGS | Parent Verified

CALVING EASE: ★

202M is a Glacier out of the \$200,000 valuation Argentinian outcross Blair's Sarita female. The full sister just sold half to Jesse Winchester for \$37,500, which we're extremely excited about. Combining the great Donna line with the highly predictable Sarita, has led to this big middled, thick topped, and long bodied bull with a great skull and front end.

LOT 203

MJT 112Y ENCORE 203M

BW 85 | Adj 205 723 | Jan 1 Wt 1910

REG #: 2377290 | MJT 203M | DOB: 27-Mar-24

SIRE: **MWC BRAVO 14J**

COLEMAN BRAVO 6313

U2 ERELITE 109Z

DAM: **JS TILDA 112Y**

ROYAL PREDESTINED DRCC 803

WILBAR TILDA409S

AngusGS | Parent Verified

CALVING EASE: ★

203M comes from our Tilda donor cow, a female that produced until she was 14. Her sons and daughters both have been well received with a female selling this year for \$24,000 to Golden Oak Livestock. This bull has a nice birthweight with a great weaning weight. He's masculine, good footed, and stout made. If you like muscle and performance with maternal backing, look here.





LOT 212 MJT 3048 EL CHAPO ET 212M

BW 70 | Adj 205 718 | Jan 1 Wt 1985 | REG #: 2393074 | MJT 212M | DOB: 6-Apr-24

SIRE: **COLLINS EL CHAPO 2101**

SCHIEFELBEIN SHOWMAN 338

HF MAYFLOWER 191Z

DAM: **MERIT SOCIALITE 3048**

BAR-E-L IRON WILL 32Y

MERIT SOCIALITE 2156

AngusGS | Parent Verified

CALVING EASE: ★★ ★



Maternal Sister of Lot 212



Maternal Sister of Lot 212

The dam to 212M is the great Merit Socialite 3048, a female that has been, and continues to be, a cornerstone of our Angus program. The granddam to our 608K herd sire who is heavily featured, she stamps her offspring with quality. Heifer certified, great footed, smooth shouldered, big hiped, with such a good presence and muscle shape to him. This bull is phenotypically great, and ranks Top 3% in foot angle, 7% in YW, WW, CW 15% REA, 10% Marbling.

LOT 215 MJT 52G CLASSIC 215M

BW 90 | Adj 205 694 | Jan 1 Wt 2010 | REG #: 2376837 | MJT 215M | DOB: 8-Apr-24

SIRE: **DMM CANADIAN CLASSIC 12G**

DAMERON C-5 AMERICAN CLASSIC

DMM MISS ESSENCE 5C

DAM: **MJT BONNIE 52G**

PERROTS TABASCO 18E

MJT BONNIE 16D

AngusGS | Parent Verified

CALVING EASE: ★

This Classic son is a slightly bigger framed individual in the offering. He excels in performance and frame. Big boned, soft middled, with a solid top, 215M offers some muscle shape and growth for those looking for a cow-oriented pound maker.




LOT 218
MJT 628K EL CHAPO 218M

BW	Adj 205	Jan 1 Wt
75	651	1800

REG #: 2376838 | MJT 218M | DOB: 9-Apr-24

SIRE: **COLLINS EL CHAPO 2101**

SCHIEFELBEIN SHOWMAN 338

HF MAYFLOWER 191Z

DAM: **MJT 12G SPARK 628K**

DMM CANADIAN CLASSIC 12G

MJT SPARK 808F

AngusGS | Parent Verified

CALVING EASE: ★★

Out of a first calver, 218M is a heifer safe bull that doesn't slack when it comes to putting on some meat and retaining muscle shape. Thick based, thick topped, with a great foot composition, you can count on this guy to make sure that your first calvers offspring come easy and perform.


LOT 223
MJT 97D LANDSLIDE 223M

BW	Adj 205	Jan 1 Wt
95	522	2050

REG #: 2376841 | MJT 223M | DOB: 10-Apr-24

SIRE: **MJT 615E LANDSLIDE 560J**

BLAIRSWEST CHARLO 28E

MJT MISS CHEETAH 615E

DAM: **MJT ELNORA 97D**

MJT TOUCH DOWN 505Z

MJT ELNORA 431Z

AngusGS | Parent Verified

CALVING EASE: ★

Performance and growth-oriented bull here, 233M is out of an established cow family. Attractive fronted, great topped, and bold sprung. This guy has the muscle composition that befits a higher-octane bull while maintaining good structure.


LOT 224
MJT 374C LANDMARK 224M

BW	Adj 205	Jan 1 Wt
100	725	2085

REG #: 2377317 | MJT 224M | DOB: 11-Apr-24

SIRE: **MJT 615E LANDMARK 557J**

BLAIRSWEST CHARLO 28E

MJT MISS CHEETAH 615E

DAM: **MJT MARLENE 374C**

GEIS KODIAK 53'07

MJT MARLENE 4W

AngusGS | Parent Verified

CALVING EASE: ★

Backed by a solid cow, this bull is performance through and through. Bigger framed, big boned, and exceptionally long bodied, it's easy to see why there was some extra lbs at birth but no trouble calving. If you like them with some grow, a stout hip, and some extra rib and muscle shape, with a nice mom, here he is.





Maternal Brother of Lot 229

LOT 229 MJT 894F LANDMARK 229M

BW 110 | Adj 205 742 | Jan 1 Wt 2215 | REG #: 2377312 | MJT 229M | DOB: 13-Apr-24

SIRE: **MJT 615E LANDMARK 557J**

BLAIRSWEST CHARLO 28E
MJT MISS CHEETAH 615E

DAM: **MJT QUEEN 894F**

DMM SHADE 70B
MJT QUEEN 294Y

AngusGS | Parent Verified

CALVING EASE: ★

This bulls a unit and always has been. He's been ahead of the curve in terms of his performance at all stages. We're excited when a highly proven cow like 894F, a female that is backed by our great 505Z sire, raises one that makes the statement this guy does. Huge topped, bold sprung, 229M is attractive through his front, explosive in his muscle, and exceptional in his foot and leg.

LOT 230 MJT 93D FIRST IMPRESSION 230M

BW 65 | Adj 205 484 | Jan 1 Wt 1795 | REG #: 2376843 | MJT 230M | DOB: 13-Apr-24

SIRE: **MJT FIRST IMPRESSION 601E**

MAF FIRST IMPRESSION 4420
MJT QUEEN 308C

DAM: **MJT DARK DUCHESS 93D**

20/20 IMPROVEMENT 37A
MJT TOUCH DOWN 140B

AngusGS | Parent Verified

CALVING EASE: ★★★



A heifer option here, 230M is a stylishly put together bull with a smooth shoulder, enough spine, and a wide base. Backed by a good cow, he's the worry free, sleep easy kind. Top 5% BW and CE.



LOT 236 MJT 638K RENOVATION 236M

BW 73 | Adj 205 536 | Jan 1 Wt 1940 | REG #: 2376846 | MJT 236M | DOB: 14-Apr-24

SIRE: **BROOKING RENOVATION 1019** SAV RENOVATION 6822
BROOKING BEAUTY 8059
DAM: **MJT 353C DUCHESS 638K** DMM CANADIAN CLASSIC 12G
MJT DARK DUCHESS 353C

AngusGS | Parent Verified

CALVING EASE: ★★

A heifers first calf, she did a whale of a job with this Renovation son. Smooth shouldered, long bodied, with great muscle and top. This fellas bound to make sure the first calf out of your females count. His mom's exceptionally solid, with an ideal udder and teat.

LOT 238 MJT 724K EL CHAPO 238M

BW 70 | Adj 205 629 | Jan 1 Wt 1860 | REG #: 2376847 | MJT 238M | DOB: 14-Apr-24

SIRE: **COLLINS EL CHAPO 2101** SCHIEFELBEIN SHOWMAN 338
HF MAYFLOWER 191Z
DAM: **MJT 12G JOANNE 724K** DMM CANADIAN CLASSIC 12G
MJT JOANNE 360C

AngusGS | Parent Verified

CALVING EASE: ★★

Moderate framed, heifer safe option that is out of a first calver who ranks high in teat and udder quality. 238M is a bull that we can't help but like. Low birthweight but adds on the pounds shortly thereafter, high quality foot, and some serious rib and muscle. Add in his solid EPD profile and you get one that checks a lot of boxes.





LOT 239 MJT 639K EL CHAPO 239M

BW 82 | Adj 205 641 | Jan 1 Wt 2100 | REG #: 2376848 | MJT 239M | DOB: 15-Apr-24

SIRE: **COLLINS EL CHAPO 2101**

DAM: **MJT 60G ELNORA 639K**

SCHIEFELBEIN SHOWMAN 338
HF MAYFLOWER 191Z
KUEBER REAL ESTATE 60G
MJT ELNORA 637E

Another heifer safe option that was a females first calf, 239M is a bull that is ideal footed, bold sprung and bold topped in a moderate package. Smaller at birth but quick to put on pounds is the ideal mixture this guy brings to the picture. For carcass merit fans, he also sits in the top 15% for REA and MARB.

AngusGS | Parent Verified

CALVING EASE: ★★★

LOT 243 MJT 461J IDOL 243M

BW 81 | Adj 719 | Jan 1 Wt 2045 | REG #: 2412701 | MJT 243M | DOB: 16-Apr-24

SIRE: **HF IDOL 213K**

DAM: **MJT 239G JOANNE 461J**

SCHIEFELBEIN SHOWMAN 338
HF EVENING TINGE 118Z
U2 BRAVO 239G
MJT JOANNE 832F

AngusGS | Parent Verified

CALVING EASE: ★★★



This Idol son is moderate in birthweight but highly efficient at putting on pounds to weaning and yearling evaluation points. Long bodied, really balanced, and smooth fronted, his dam is strong uddered as well.



LOT 244 MJT 692K RENOVATION 244M

BW 78 | Adj 205 574 | Jan 1 Wt 1680 | REG #: 2376851 | MJT 244M | DOB: 16-Apr-24

SIRE: **BROOKING RENOVATION 1019** SAV RENOVATION 6822
BROOKING BEAUTY 8059

DAM: **MJT 28E DUCHESS 692K** BLAIRSWEST CHARLO 28E
MJT DUCHESS 134B

AngusGS | Parent Verified

CALVING EASE: ★★

Heifer safe option here, 244M is a moderate framed, big boned bull with a good foot under him. Nice fronted and backed by a good first calving Charlo daughter with a great udder and foot.



LOT 251 MJT 716K EL CHAPO 251M

BW 78 | Adj 205 674 | Jan 1 Wt 1875 | REG #: 2376855 | MJT 251M | DOB: 18-Apr-24

SIRE: **COLLINS EL CHAPO 2101** SCHIEFELBEIN SHOWMAN 338
HF MAYFLOWER 191Z

DAM: **MJT 12G BARBARA 716K** DMM CANADIAN CLASSIC 12G
MJT BARBARA ROSE 860F

AngusGS | Parent Verified

CALVING EASE: ★★

251M is a stout made, all around honest bull. Backed by a strong uddered Classic daughter who reared him as her first calf, you have to appreciate how soft made, thick, and muscular this young heifer bull is. Don't let the light BW fool you, he puts on lbs too. Top 1% teat and udder.



LOT 254 MJT 738K EL CHAPO 254M

BW 70 | Adj 205 643 | Jan 1 Wt 1940 | REG #: 2376856 | MJT 254M | DOB: 18-Apr-24

SIRE: **COLLINS EL CHAPO 2101** SCHIEFELBEIN SHOWMAN 338
HF MAYFLOWER 191Z

DAM: **MJT 28E BARBARA ROSE 738K** BLAIRSWEST CHARLO 28E
MJT BARBARA ROSE 120B

AngusGS | Parent Verified

CALVING EASE: ★★

A moderate birth weight son of a first calving Classic daughter with a strong udder composition, 254M is a neat individual. Nice frame size, big topped, deep and bold middled, with a high-quality foot and leg, he's an overall complete bull. Nice BW with some serious gains and a great dam. Top 1% teat and udder, top 25% BW, WW, YW, RADG.



Dam of Lot 254



LOT 255 MJT 651E FIRST IMPRESSION 255M

BW 80 | Adj 205 699 | Jan 1 Wt 1985 | REG #: 2412228 | MJT 255M | DOB: 18-Apr-24

SIRE: **MJT FIRST IMPRESSION 601E** MAF FIRST IMPRESSION 4420
MJT QUEEN 308C

DAM: **MJT DARK DUCHESS 651E** DMM SHADE 70B
MJT TOUCH DOWN 140B

AngusGS | Parent Verified

CALVING EASE: ★★

255M stems from a long-standing, big bodied, strong uddered Shade daughter who has withstood the test of time in some of the harshest pastures we have. Regardless of the environment and mating, this guy is her type to make. Long spined, a touch more frame, but big barreled, superbly balanced with some meat and potatoes to him.



Maternal Brother of Lot 255

LOT 256 MJT 707K RENOVATION 256M

BW 68 | Adj 205 554 | Jan 1 Wt 1700 | REG #: 2376857 | MJT 256M | DOB: 18-Apr-24

SIRE: **BROOKING RENOVATION 1019**S A V RENOVATION 6822
BROOKING BEAUTY 8059DAM: **MJT 6428 BARBARA ROSE 707K**LAZY JB SUNDANCE 6428
MJT BARBARA ROSE 320C

AngusGS | Parent Verified

CALVING EASE: ★★★

This bull is out of a strong first calver, who went on to have one of the top replacements in the heifer pen this year. He's stout, good muscled, and nice in through his shoulder. If you like a bull with some angus look and character to them, he's your guy. Top 3% CE, 8% BW.

**LOT 266 MJT 258H CLASSIC 266M**

BW 100 | Adj 205 663 | Jan 1 Wt 2100 | REG #: 2376863 | MJT 266M | DOB: 20-Apr-24

SIRE: **DMM CANADIAN CLASSIC 12G**DAMERON C-5 AMERICAN CLASSIC
DMM MISS ESSENCE 5CDAM: **MJT CHIMES 258H**MJT FIRST IMPRESSION 601E
MJT CHIMES 68D

AngusGS | Parent Verified

CALVING EASE: ★

This Classic son is a performance-oriented bull with plenty of grow and a solid ADG. Backed by a nice 601E daughter with the solid foundations we expect of our females, this guy packs a punch with some extra frame, natural softness, and muscle expression.

**LOT 267 MJT 410J CROSSFIRE 267M**

BW 86 | Adj 205 671 | Jan 1 Wt 1940 | REG #: 2376898 | MJT 267M | DOB: 20-Apr-24

SIRE: **MJT CROSSFIRE 674E**BAR-H CROSSFIRE 29C
MJT BONNIE 316CDAM: **MJT BONNIE 410J**JAYMARANDY HARD EVIDENCE 626D
MJT BONNIE 907F

AngusGS | Parent Verified

CALVING EASE: ★★

267M is a stout made, thick bodied bull with plenty of shape and muscle. We love the amount of bone, foot quality, and middle this bull possesses in his moderate stature. Top 5% udder and teat, 15% MCE and heifer pregnancy.

**LOT 268 MJT 660E LANDMARK 268M**

BW 94 | Adj 205 751 | Jan 1 Wt 1875 | REG #: 2377302 | MJT 268M | DOB: 20-Apr-24

SIRE: **MJT 615E LANDMARK 557J**BLAIRSWEST CHARLO 28E
MJT MISS CHEETAH 615EDAM: **MJT BONNIE 660E**DMM SHADE 70B
MJT TOUCH DOWN 152B

AngusGS | Parent Verified

CALVING EASE: ★

This bull is performance through and through. A nice frame size, plenty of bone, and a whole lot of length. Backed by a proven Shade daughter, they don't make it to her age without solid foundations and proven production record.



Maternal Brother of Lot 268





LOT 269			MJT 808F IDOL 269M	
BW 78	Adj 205 674	Jan 1 Wt 2010	REG #: 2377301 MJT 269M DOB: 20-Apr-24	
SIRE: HF IDOL 213K			SCHIEFELBEIN SHOWMAN 338 HF EVENING TINGE 118Z	
DAM: MJT SPARK 808F			BAR-H CROSSFIRE 29C MJT JOANNE 20D	
AngusGS Parent Verified			CALVING EASE: ★★ ★	



Dam of Lot 269



Maternal Brother of Lot 269

269M has all the pieces. Moderate birthweight, a 3.19 ADG, and loads of muscle, hip and middle. He puts calving ease and performance in one package with an ideal herd bull look, in spite of loosing his tail this summer. Backed by our 808F donor cow, the dam to our late 92G herd sire, the predictability of this bull in terms of what he has to offer in both gender pools quality is second to none.



Dam of Lot 273

LOT 273			MJT 506Z CROSSFIRE 273M	
BW 90	Adj 205 775	Jan 1 Wt 1940	REG #: 2376902 MJT 273M DOB: 21-Apr-24	
SIRE: MJT CROSSFIRE 674E			BAR-H CROSSFIRE 29C MJT BONNIE 316C	
DAM: MJT DARK DUCHESS 506Z			MJT KODIAK 233X MJT A DARK DUCHESS 82B	
AngusGS Parent Verified			CALVING EASE: ★	

This stout made, moderately packaged bull comes from one of our matriarchs and doesn't skimp when it comes to laying down pounds when he crosses the scale. If you like them thick topped, explosively muscled, and wide based with some softness through their middle third, look here.



Maternal Granddam of Lot 274

LOT 274 MJT 563J CROSS BOW 274M

BW 86 | Adj 205 568 | Jan 1 Wt 1935 | REG #: 2377298 | MJT 274M | DOB: 22-Apr-24

SIRE: **MJT 354H CROSS BOW 608K**

DAM: **MJT 813F SPARK 563J**

MJT CROSS BOW 838F
MJT 28E SOCIALITE 354H
MJT IMPRESSIVE 813F
MJT SPARK 808F

We're excited offer our first Cross Bow 608K sons, and 274M is an example why. Exceptional through his hip and top, expressive in his muscle layout, stout boned, with great structural quality, he has a bright future ahead of him. Top that with a dam out of our 808F donor, and the Socialite 354H on the top, a farm favourite, he has a lot of positive pieces. Top 10% Claw, Angle, REA.

AngusGS | Parent Verified

CALVING EASE: ★★

MJT BLACK ANGUS BULLS





Maternal Brother of Lot 276

LOT 276 MJT 848F CROSS BOW 276M

BW 86 | Adj 205 660 | Jan 1 Wt 2085

REG #: 2377297 | MJT 276M | DOB: 22-Apr-24

SIRE: **MJT 354H CROSS BOW 608K**

MJT CROSS BOW 838F
MJT 28E SOCIALITE 354H
MJT TOUCH DOWN 505Z
MJT JOANNE 141B

DAM: **MJT JOANNE 848F**

AngusGS | Parent Verified

CALVING EASE: ★★

This "Canadian" bred bull is another 608K son we like a lot. Posting a 3.10 ADG, 276M is a thick topped, stout made bull. In typical fashion of this sire group, this bull is a middle of the road frame size with an impressive muscle pattern and amount of bone. Backed by a superb uddered, high-quality dam, there's a lot to like here.



LOT 279 MJT 43D FIRST IMPRESSION 279M

BW 86 | Adj 205 585 | Jan 1 Wt 1790

REG #: 2376865 | MJT 279M | DOB: 22-Apr-24

SIRE: **MJT FIRST IMPRESSION 601E**

MAF FIRST IMPRESSION 4420
MJT QUEEN 308C
MJT TOUCH DOWN 505Z
MJT DARK DUCHESS 594Z

DAM: **MJT DARK DUCHESS 43D**

AngusGS | Parent Verified

CALVING EASE: ★★

279M is a 601E son that is bold throughout his rib, muscular in his stature, and wide at his base. There's a lot of character to this bull, and his dam is a cherry on top. Injecting the 505Z herd sire into any bull is a recipe for some extra performance, udder quality and maternal quality.



LOT 280**MJT 68D LANDSLIDE 280M**BW | Adj 205 | Jan 1 Wt
98 | 629 | 2100

REG #: 2376866 | MJT 280M | DOB: 23-Apr-24

SIRE: **MJT 615E LANDSLIDE 560J**

BLAIRSWEST CHARLO 28E

MJT MISS CHEETAH 615E

DAM: **MJT CHIMES 68D**

20/20 IMPROVEMENT 37A

MJT CHIMES 139B

AngusGS | Parent Verified

CALVING EASE: ★

280M is a bigger framed, bold sprung individual who combines length, thickness, and foot quality in an overall balanced package. If you like a bull whose musculature blends in throughout his skeleton in a smooth package while laying in a smooth shoulder set, add him to your list.

**LOT 285****MJT 640K EL CHAPO 285M**BW | Adj 205 | Jan 1 Wt
84 | 643 | 1935

REG #: 2376869 | MJT 285M | DOB: 23-Apr-24

SIRE: **COLLINS EL CHAPO 2101**

SCHIEFELBEIN SHOWMAN 338

HF MAYFLOWER 191Z

DAM: **MJT 601E QUEEN 640K**

MJT FIRST IMPRESSION 601E

MJT QUEEN 273H

AngusGS | Parent Verified

CALVING EASE: ★★

A heifers first calf, 285M boasted a 2.71 ADG on mothers' milk, a solid weaning weight, and a strong yearling weight. A compact package that can put lbs on calves thanks to his thick build, musculature, and bone.



KILLIN TIME
TRUCKIN
LTD

PROUDLY SERVING WAINWRIGHT AND AREA

- 53' ground-load trailer for hauling livestock
- 53' step-deck capable of hauling 38 large round bales
- Sand and gravel deliveries available with belly dump and end dump trailers.

Dwayne Rutledge**CELL: 780-806-1315****EMAIL: DRBISON@HOTMAIL.COM**

MJT BLACK ANGUS BULLS





LOT 288			MJT 359C LANDMARK 288M	
BW 78	Adj 205 759	Jan 1 Wt 1950	REG #: 2381960 MJT 288M DOB: 23-Apr-24	
SIRE: MJT 615E LANDMARK 557J			BLAIRSWEST CHARLO 28E MJT MISS CHEETAH 615E	
DAM: MJT EXTRA 359C			MJT TOUCH DOWN 505Z MJT ERICA 266Y	
AngusGS Parent Verified			CALVING EASE: ★★	

Lower BW powerhouse here, a true anomaly. Rarely is it that a 78 lbs calf weans off at 759 with an ADG of 3.32 lbs/day. Long spined, out of a top producer, it's easy to see how this one would push the scale down. Raw muscle, good structure, and herd bull look. Top 6% Claw and Angle.



Maternal Granddam of Lot 290

LOT 290			MJT 715K EL CHAPO 290M	
BW 71	Adj 205 519	Jan 1 Wt 1795	REG #: 2376871 MJT 290M DOB: 24-Apr-24	
SIRE: COLLINS EL CHAPO 2101			SCHIEFELBEIN SHOWMAN 338 HF MAYFLOWER 191Z	
DAM: MJT 12G JOANNE 715K			DMM CANADIAN CLASSIC 12G MJT JOANNE 333C	
AngusGS Parent Verified			CALVING EASE: ★★★	

A heifers first calf, 290M is long bodied, smooth shouldered, and stout topped. We like how clean made, balanced, and expressive this bull is for his heifer bull designation. Backed by a strong young dam, this bull is not only Top 7% Claw and Angle, but also 25% Marbling.





LOT 291			MJT 708K EL CHAPO 291M	
BW 62	Adj 205 625	Jan 1 Wt 1900	REG #: 2376872 MJT 291M DOB: 24-Apr-24	
SIRE: COLLINS EL CHAPO 2101			SCHIEFELBEIN SHOWMAN 338 HF MAYFLOWER 191Z	
DAM: MJT 92G BONNIE 708K			MJT CHARLO 92G MJT BONNIE 217H	
AngusGS Parent Verified			CALVING EASE: ★★	

291M is a stud for lack of a better term. This bull has heifer safe birth weight, muscle shape, rib expression, a superb top, and a look at me presence. Big boned, big footed, and a serious up and coming cows first calf (she has another great one in the pen for next year), this is one you can't miss. Top 1% BW, CE, Milk, 8% Claw, 25% Teat and Udder.



MJT BLACK ANGUS BULLS





Maternal Brother of Lot 294

LOT 294 MJT 609E HEARTLAND 294M

BW 93 | Adj 205 752 | Jan 1 Wt 2105 | REG #: 2376873 | MJT 294M | DOB: 24-Apr-24

SIRE: **MICH WHEATLAND BULL 942G**

EXAR BLUE CHIP 1877B
P2C BEAUTY 531 DT

DAM: **MJT ELNORA 609E**

BAR-H CROSSFIRE 29C
MJT ELNORA 361C

294M is a high-octane beast. Little extra birthweight that comes with superior performance throughout. A 3.59 ADG and 752 WW on mothers milk, his dam is from a long line of cornerstone females. Big solid foot and bone, bold rib and muscle expression. What a unit. Top 25% WW, YW, 6% heifer pregnancy.

AngusGS | Parent Verified

CALVING EASE: ★



LOT 295 MJT 45D FIRST IMPRESSION 295M

BW 88 | Adj 205 530 | Jan 1 Wt 1830 | REG #: 2392395 | MJT 295M | DOB: 24-Apr-24

SIRE: **MJT FIRST IMPRESSION 601E**

MAF FIRST IMPRESSION 4420
MJT QUEEN 308C

DAM: **MJT MISS SIZZLE 45D**

DFCC 176W SIZZLER 52Y
MJT SAMANTHA 478Z

AngusGS | Parent Verified

CALVING EASE: ★

Out of a consistent producer, 295M brings a soft make, ample bone and foot to the table in a moderate package. A well-rounded bull that should be on a few lists.

LOT 299 MJT 457J LANDMARK 299M

BW 91 | Adj 205 700 | Jan 1 Wt 1690 | REG #: 2377291 | MJT 299M | DOB: 25-Apr-24

SIRE: **MJT 615E LANDMARK 557J**

BLAIRSWEST CHARLO 28E
MJT MISS CHEETAH 615E

DAM: **MJT 674E TOUCH DOWN 457J**

MJT CROSSFIRE 674E
MJT TOUCH DOWN 140B

AngusGS | Parent Verified

CALVING EASE: ★

This guy is a moderate statured, thick made, performance-oriented bull. Clean sheathed, full of muscle, and balanced throughout his skeleton. An impressive ADG with a strong weaning weight shows that what he lacks in frame he won't in returns when his calves cross the scale.



LOT 302 MJT 615E IDOL 302M

BW 88 | Adj 205 678 | Jan 1 Wt 2100 | REG #: 2377290 | MJT 302M | DOB: 25-Apr-24

SIRE: **HF IDOL 213K**

SCHIEFELBEIN SHOWMAN 338
HF EVENING TINGE 118Z

DAM: **MJT MISS CHEETAH 615E**

BAR-H CROSSFIRE 29C
MJT LUCY 16A

AngusGS | Parent Verified

CALVING EASE: ★★



Dam of Lot 302

Maternal Sister of Lot 302 Maternal Brother of Lot 302

Out of our 615E donor cow, the dam to the 557J and 560J herd sires with several offspring in the sale, this guy's a head turner. With a 3.24 ADG, he's big framed, bold ribbed, with muscle and top to spare, he packs on performance in a maternally oriented package without sacrificing structural quality. Top 4% Teat & Udder, 6% Claw, and 15% Marbling.





LOT 303 MJT 629K EL CHAPO 303M

BW 78 | Adj 205 610 | Jan 1 Wt 1840 | REG #: 2376877 | MJT 303M | DOB: 25-Apr-24

SIRE: **COLLINS EL CHAPO 2101**

SCHIEFELBEIN SHOWMAN 338

HF MAYFLOWER 191Z

DAM: **MJT 601E QUEEN 629K**

MJT FIRST IMPRESSION 601E

MJT QUEEN 324H

AngusGS | Parent Verified

CALVING EASE: ★★

A great uddered first calving 601E females first calf, this guy is heifer safe and still has some growth to offer. Average framed, but deep flanked, wide pinned and level topped, his greatest asset is his foot quality and smooth make. Top 15% CE, 25% Claw and Angle.



Maternal Brother of Lot 307

LOT 307 MJT 405J CROSS BOW 307M

BW 80 | Adj 205 587 | Jan 1 Wt 1810 | REG #: 2377284 | MJT 307M | DOB: 26-Apr-24

SIRE: **MJT 354H CROSS BOW 608K**

MJT CROSS BOW 838F

MJT 28E SOCIALITE 354H

DAM: **MJT 813F MADAME PRIDE 405J**

MJT IMPRESSIVE 813F

MJT MADAME PRIDE 94D

AngusGS | Parent Verified

CALVING EASE: ★★

A neat Cross Bow son, sired by a younger female that raised a sale feature last year. This bull is moderate birth weight, but as bold sprung in his rib and stout in his hip as we can make them while retaining some musculature and look.



LOT 308 MJT 653K EL CHAPO 308M

BW 72 | Adj 205 703 | Jan 1 Wt 1965 | REG #: 2376878 | MJT 308M | DOB: 26-Apr-24

SIRE: **COLLINS EL CHAPO 2101**

SCHIEFELBEIN SHOWMAN 338

HF MAYFLOWER 191Z

DAM: **MJT 92G ATLANTA 653K**

MJT CHARLO 92G

MJT ATLANTA 239H

AngusGS | Parent Verified

CALVING EASE: ★★

A low birthweight option that's out of a good uddered, bold ribbed first calving 92G herd sire. 308M is an individual that has muscle and growth despite his heifer safe birth weight. His 3.15 ADG and solid weights mean he's one to use on replacements to ensure those first calves bring a good dollar.



LOT 310 MJT 217H IDOL 310M

BW 86 | Adj 205 641 | Jan 1 Wt 2080 | REG #: 2377276 | MJT 310M | DOB: 26-Apr-24

SIRE: **HF IDOL 213K**

SCHIEFELBEIN SHOWMAN 338

HF EVENING TINGE 118Z

DAM: **MJT BONNIE 217H**

BAR-H CROSSFIRE 29C

MJT BONNIE 907F

AngusGS | Parent Verified

CALVING EASE: ★★

This bull is a serious meat machine, big boned, bigger framed, and hard muscled. He posted the highest ADG at almost 5 lbs/day. His dam is a proven Crossfire daughter, renowned for their foot, udder, and doability. Top 5% Claw and Angle, 10% RADG



Maternal Brother of Lot 312

LOT 312

MJT 152B LANDMARK 312M

BW 82 | Adj 205 605 | Jan 1 Wt 1950

REG #: 2377275 | MJT 312M | DOB: 27-Apr-24

SIRE: **MJT 615E LANDMARK 557J**

BLAIRSWEST CHARLO 28E
MJT MISS CHEETAH 615E
MJT TOUCH DOWN 467Z
MJT BONNIE 414Z

DAM: **MJT TOUCH DOWN 152B**

312M is backed by a long-time proven female. 152B has been a staple, the kind we can rely on to produce a solid calf and breed back in any condition. This year's entry from her is a loose hided, deep flanked, stout type bull that is nice in his birthweight, and solid in weaning and yearling measurement points.

AngusGS | Parent Verified

CALVING EASE: ★★

MJT BLACK ANGUS BULLS





LOT 313

MJT 291H IDOL 313M

BW 78 | Adj 205 579 | Jan 1 Wt 2055

REG #: 2377274 | MJT 313M | DOB: 27-Apr-24

SIRE: **HF IDOL 213K**

SCHIEFELBEIN SHOWMAN 338

HF EVENING TINGE 118Z

DAM: **MJT JEWEL 291H**

MJT IMPRESSIVE 813F

MJT MISS JEWEL 611E

AngusGS | Parent Verified

CALVING EASE: ★★

Backed by a top Impressive daughter, known for their foot quality and her superior udder quality, 313M is a heifer safe option that is going to leave replacements you'll be wanting to keep. Stout, thick, bold ribbed, and deep flanked, he's a Top 10% RADG heifer bull ranking top 20% in CE and BW.



LOT 316

MJT 595F SHOWMAN 316M

BW 76 | Adj 205 612 | Jan 1 Wt 1840

REG #: 2376880 | MJT 316M | DOB: 27-Apr-24

SIRE: **SCHIEFELBEIN SHOWMAN 338**

SCHIEFELBEIN ATTRACTIVE 4565

FROSTY ELBA 3745

DAM: **BLAIR'S ERICA 595F**

DUFF NAPOLEON 232

BAR-E-L ERICA 74A

AngusGS | Parent Verified

CALVING EASE: ★★

A heifer safe option out of our Duff Napoleon x Erica 74A donor, this individuals dam is one of the breeds elites, with full sisters and their offspring being sale toppers across the continent. 316M is deep ribbed, thick topped, and nice muscled. Top 1% Scrotal, 10% WW, YW, RADG, Claw, Angle, and REA.

Dam of Lot 316



LOT 318

MJT 646K RENOVATION 318M

BW 78 | Adj 205 576 | Jan 1 Wt 1800

REG #: 2376881 | MJT 318M | DOB: 28-Apr-24

SIRE: **BROOKING RENOVATION 1019**

SAV RENOVATION 6822

BROOKING BEAUTY 8059

DAM: **MJT 12G DARK DUCHESS 646K**

DMM CANADIAN CLASSIC 12G

MJT DARK DUCHESS 712

AngusGS | Parent Verified

CALVING EASE: ★★

This thick made bull is smooth through his shoulder, square over his top and down throughout to his base. A heifers first calf, this Renovation son has a great skull and is backed by a strong Classic daughter. Top 3% Udder & Teat.





LOT 319 MJT 214H CROSS BOW 319M

BW 90 | Adj 205 631 | Jan 1 Wt 1850 | REG #: 2377272 | MJT 319M | DOB: 28-Apr-24

SIRE: **MJT 354H CROSS BOW 608K**

MJT CROSS BOW 838F
MJT 28E SOCIALITE 354H

DAM: **MJT CHEETAH 214H**

MJT IMPRESSIVE 813F
MJT MISS CHEETAH 615E

AngusGS | Parent Verified

CALVING EASE: ★

This bulls a compact powerhouse, big ribbed, thick as you can make them, and heavy muscled. 319M is backed by the Cheetah donor cow family. Nearly a 3 lb ADG, with a solid WW and YW, this guy is performance in condensed package. Top 1% Claw, 15% Angle.

LOT 321 MJT 816F LANDSLIDE 321M

BW 86 | Adj 205 641 | Jan 1 Wt 2015 | REG #: 2376882 | MJT 321M | DOB: 28-Apr-24

SIRE: **MJT 615E LANDSLIDE 560J**

BLAIRSWEST CHARLO 28E
MJT MISS CHEETAH 615E

DAM: **MJT ATLANTA 816F**

BAR-H CROSSFIRE 29C
MJT ATLANTA 7D

AngusGS | Parent Verified

CALVING EASE: ★

321M is a bigger framed performance package, posting a 3.1 ADG this guy has lbs to spare. Long spined, expressive in his muscle, and wide over the top of his skeleton. He's backed by a powerhouse dam who passed her foot quality onto this guy.



Maternal Brother of Lot 321



LOT 323 MJT 595F SHOWMAN 323M

BW 77 | Adj 205 578 | Jan 1 Wt 1885 | REG #: 2377270 | MJT 323M | DOB: 29-Apr-24

SIRE: **SCHIEFELBEIN SHOWMAN 338**

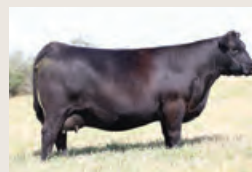
SCHIEFELBEIN ATTRACTIVE 4565
FROSTY ELBA 3745

DAM: **BLAIR'S ERICA 595F**

DUFF NAPOLEON 232
BAR-E-L ERICA 74A

AngusGS | Parent Verified

CALVING EASE: ★★ ★



Dam of Lot 323



Maternal Brother of Lot 323

323M has the look, genetic backing, and quality to go the mile. This big ribbed, stout hipped, and well muscled, calving ease bull is backed by one of the greats. 595F is one of the great offspring from the Duff Napoleon x 74A crossing that's taken the continent by storm. When they look like this guy and read on paper as well as he does, it's easy to see why. Top 2% Angle & Udder, 10% Claw, CE & Scrotal, 25% BW, WW, YW, RADG.



LOT 325 MJT 234H IDOL 325M

BW 80 | Adj 205 659 | Jan 1 Wt 2085 | REG #: 2377269 | MJT 325M | DOB: 30-Apr-24

SIRE: **HF IDOL 213K**

SCHIEFELBEIN SHOWMAN 338

HF EVENING TINGE 118Z

DAM: **MJT MARLENE 234H**

BAR-H CROSSFIRE 29C

MJT MARLENE 374C

AngusGS | Parent Verified

CALVING EASE: ★★★

This growthy Idol son has a moderate BW but ramps up a 3.14 ADG to weaning, and an impressive YW. Long bodied, laying in some musculature and capacity with a bold forerib and smooth shoulder. He's backed by a proven Crossfire daughter. Top 2% Claw, 10% BW, and 25% CE & Angle.



LOT 327 MJT 360C IDOL 327M

BW 76 | Adj 205 633 | Jan 1 Wt 2035 | REG #: 2377267 | MJT 327M | DOB: 1-May-24

SIRE: **HF IDOL 213K**

SCHIEFELBEIN SHOWMAN 338

HF EVENING TINGE 118Z

DAM: **MJT JOANNE 360C**

20/20 IMPROVEMENT 37A

MJT JOANNE 9A

AngusGS | Parent Verified

CALVING EASE: ★★★

327M is a moderate framed, low BW option ¾ brother to our lead off bull from last year. From the same dam, he was sent into the back country and posted solid gains with an impressive YW. Bold ribbed, solid muscled, great fronted, with plenty of thickness. Top 5% RADG, Udder & Claw, 25% Angle, YW, Marbling, & Teat.



Maternal Brother of Lot 327

LOT 331 MJT 661K EL CHAPO 331M

BW 78 | Adj 205 609 | Jan 1 Wt 1705 | REG #: 2376886 | MJT 331M | DOB: 4-May-24

SIRE: **COLLINS EL CHAPO 2101**

SCHIEFELBEIN SHOWMAN 338

HF MAYFLOWER 191Z

DAM: **MJT 60G BONNIE 661K**

KUEBER REAL ESTATE 60G

MJT BONNIE 96G

AngusGS | Parent Verified

CALVING EASE: ★★★

A heifers first calf, 331M is a low birthweight option that maintains a thick stature, depth in his forerib, and width over the top of his skeleton. Momma is a nice uddered female with a bold rib herself. Top 1% Udder, 7% BW & Angle, 20% CE & Claw.





Maternal Brother of Lot 333

LOT 333 MJT 48D LANDMARK 333M

BW	Adj 205	Jan 1 Wt
90	639	1995

REG #: 2377261 | MJT 333M | DOB: 5-May-24

SIRE: **MJT 615E LANDMARK 557J**

BLAIRSWEST CHARLO 28E

MJT MISS CHEETAH 615E

DAM: **MJT BARBARA ROSE 48D**

MJT TOUCH DOWN 505Z

MJT BARBARA ROSE 446Z

AngusGS | Parent Verified

CALVING EASE: ★

A performance-oriented bull, 333M is chock full of muscle, dimension, and look. An individual that will leave an impression with his shape and presence. His dams a trusty 505Z daughter that has been well established, he should leave behind some powerhouse replacement females, and some stout male calves as well.



Dam of Lot 339

LOT 339 MJT 301C FIRST IMPRESSION 339M

BW	Adj 205	Jan 1 Wt
88	614	1820

REG #: 2377254 | MJT 339M | DOB: 9-May-24

SIRE: **MJT FIRST IMPRESSION 601E**

MAF FIRST IMPRESSION 4420

MJT QUEEN 308C

DAM: **MJT BONNIE 301C**

DFCC 176W SIZZLER 52Y

MJT BONNIE 123W

AngusGS | Parent Verified

CALVING EASE: ★

A well-balanced bull, with plenty of middle and a soft look, 339M is from a trusted Sizzler daughter known for throwing a little extra grow and punch with minimal management. Lots of bone and shape on this guy.

LOT 342
 BW 80 | Adj 205 656 | Jan 1 Wt 1725
 REG #: 2377253 | MJT 342M | DOB: 9-May-24

MJT 684E IDOL 342M
 SIRE: **HF IDOL 213K**
 DAM: **MJT CHIMES 684E**
 ANGUSGS | Parent Verified

SCHIEFELBEIN SHOWMAN 338
 HF EVENING TINGE 118Z
 MAF FIRST IMPRESSION 4420
 MJT CHIMES 430Z
 CALVING EASE: ★★★



342M is out of a good uddered female, who consistently throws more moderate framed bulls with plenty of center mass in a lower BW package. She continues that track record with this $\frac{3}{4}$ brother to her sale feature bull last year, soft made, thick topped, and attractive fronted.

LOT 344
 BW 90 | Adj 205 806 | Jan 1 Wt 2100
 REG #: 2377251 | MJT 344M | DOB: 11-May-24

MJT 1G IDOL 344M
 SIRE: **HF IDOL 213K**
 DAM: **MJT MISS FIZZ 1G**
 ANGUSGS | Parent Verified

SCHIEFELBEIN SHOWMAN 338
 HF EVENING TINGE 118Z
 BLAIRSWEST CHARLO 28E
 MJT MISS CHEETAH 615E
 CALVING EASE: ★



Dam of Lot 344 Maternal Granddam of Lot 344 Maternal Brother of Lot 344

Performance bull from a trusted line. His dam is the full sister to our 557J and 560J herd sires, backed by the 615E donor female. This female has consistently raised top tier offspring regardless of the mating or gender. Big time hip, muscle, and center mass in 344M with some of the best maternal lines we can cross. His actual and genomic performance indicators line up nicely.





LOT 353 MJT 483J IMPRESSIVE 353M

BW 90 | Adj 205 829 | Jan 1 Wt 1845 | REG #: 2405456 | MJT 353M | DOB: 23-May-24

SIRE: **MJT 120B IMPRESSIVE 540J**

MJT IMPRESSIVE 813F
MJT BARBARA ROSE 120B

DAM: **MJT 60G CRUSH MAID 483J**

KUEBER REAL ESTATE 60G
MJT SD CRUSH MAID ET 48G

AngusGS | Parent Verified

CALVING EASE: ★

This bull is a nice framed bull from a sire we loved the dam and foot quality on. 353M put up a 3.71 ADG to weaning and developed into this muscle dense package. Clean sheathed, thick made, and well balanced with long time producers on both sides of the pedigree.



LOT 356 MJT 637K EL CHAPO 356M

BW 70 | Adj 205 766 | Jan 1 Wt 1825 | REG #: 2378064 | MJT 356M | DOB: 4-Jun-24

SIRE: **COLLINS EL CHAPO 2101**

SCHIEFELBEIN SHOWMAN 338
HF MAYFLOWER 191Z

DAM: **MJT 601E DARK DUCHESS 637K**

MJT FIRST IMPRESSION 601E
MJT DARK DUCHESS 286H

AngusGS | Parent Verified

CALVING EASE: ★★★

First calvers heifer friendly bull, 356M is a smooth made, level topped, stout featured bull that posted an impressive ADG to weaning. Mom is a solid 601E daughter, making for a highly predictable product. Top 15% BW, 20% CE.



LOT 359 MJT 734K RENOVATION 359M

BW 78 | Adj 205 582 | Jan 1 Wt 1790 | REG #: 2448520 | MJT 359M | DOB: 9-Jun-24

SIRE: **BROOKING RENOVATION 1019**

SAV RENOVATION 6822
BROOKING BEAUTY 8059

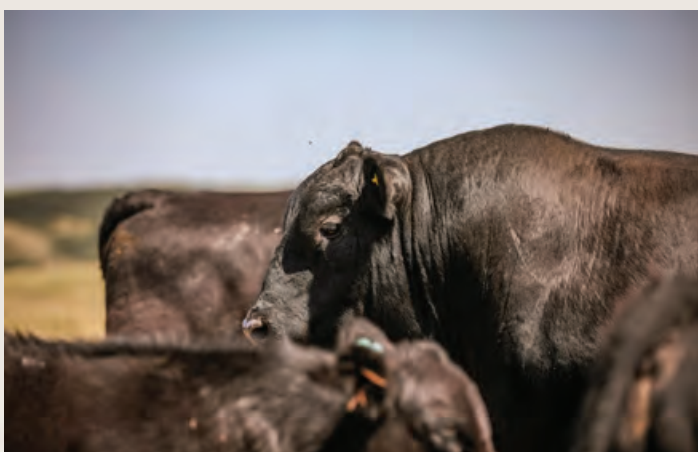
DAM: **MJT 60J CHIMES 734K**

KUEBER REAL ESTATE 60G
MJT CHIMES 684E

AngusGS | Parent Verified

CALVING EASE: ★★★

359M is generations of calving ease behind him. His dam is a maternal sister to a feature calving ease bull we offered last year, the consistency and maternal quality behind this guy is a major asset. Bold topped, big middled, with muscle and a great skull. Top 6% CE, 15% Udder, 25% BW.



**REF
SIRE****SPARROWS MORENO 153J****BW
105**

REG #: MC822981 | SB 153J | DOB: 15-Feb-21

SIRE: **SPARROWS LIRIANO 660D**WINN MANS SKAGGS 663X
SPARROWS SYMPHONY 130ZDAM: **SPARROWS MAGNIFIQUE 4C**LT BLUE VALUE 7903 ET
SPARROWS MAGNIFIQUE 4C

A bull found by Matthew and Kurt that they knew was the right kind. Descending from a high end Blue Value cow favoured by Cam and Josie Sparrow and sired by their tremendously popular and remarkably long lasting Liriano 660D herd sire. Moreno is co-owned with the Fishers and has done a terrific job of breeding at both places. Despite working hard from a yearling he has matured into a stout, long bodied bull with an excellent foot. We admire the consistency, hair and foot that he is leaving us in all of his calves and we look forward to the longevity of his parents transmitting through to the bulls offered in the sale and in the future.

**REF
SIRE****BECK'S MANIFEST 2122J****BW
76**

REG #: MC825562 | BECK 2122J | DOB: 22-Jan-21

SIRE: **LT AFFINITY 6221 PL**LT RUSHMORE 8060 PLD
LT ATHENA 1247DAM: **BECK'S DISCO 38G**SPARROWS BRAXTON 519C
BECK'S DISCO 10D

Manifest is a bull that continues to impress us. Used exclusively on our heifers for two years we have had exceptional luck calving all sizes of heifers to him with very little assistance. The calves are born strong and grow quickly. His daughters are good-uddered and know how to raise a solid calf right off the bat. Sired by the birth friendly LT Affinity with an outstanding Sparrows Braxton dam from the Becks at Milestone, SK we expect the Manifest bulls in this sale to offer exceptional calving ease and vigour with enough grow to ensure a premium on sale day.

**REF
SIRE****HIGH BLUFF JJ 85J****BW
104**

REG #: MC817943 | HBSF 85J | DOB: 30-Jan-21

SIRE: **HIGH BLUFF GAME ON 78G**CJC SYMBOL B1067P
HIGH BLUFF BUSTER 176WDAM: **DRD LEDGER STAR 942D**LT LEDGER 0332
JWX RED RUBY 942B

JJ is a bull we have been impressed with since we first laid eyes on him and we were lucky to partner with the Jackson family of Inglis MB on JJ when the gavel fell. It's a long trip for him to make twice a year but with the excellent progeny on the ground at both programs we are glad he is such a good natured and easy keeping breeding bull. JJ does what the best of the Charolais breed is known for, producing big growthy calves with stretch and hair but not giving up the calving ease needed for today's low fuss ranches.





LOT 402			MJT 9332K RANSOM 402M	
BW 93	Adj 205 755	Jan 1 Wt 2100	REG #: MC880898 MJT 402M DOB: 16-Jan-24	
SIRE: LT RANSOM 8644			LT JOURNEY 5208 LT SHEILA 337	
DAM: JWX KENZIE 9332K			TR CAG CARBON COPY 7630E ET JWX QUEEN 332G	
100K Homo Polled Parent Verified PAF			CALVING EASE: ★	

402M is one of a handful of early born bulls from a group of purchased heifers acquired from Wilgenbusch Charolais. His dam is a solid young Carbon Copy daughter with a great udder and foot, and she did well to raise this long bodied, thick made, solid footed beast. Top 1% YW & Marbling, 2% WW.



LOT 403			MJT 5516K RANSOM 403M	
BW 70	Adj 205 630	Jan 1 Wt 1890	REG #: MC880896 MJT 403M DOB: 28-Jan-24	
SIRE: LT RANSOM 8644			LT JOURNEY 5208 LT SHEILA 337	
DAM: JWX COWGIRL 5516K			JWX HARD BALL 955H JWX COWGIRL 516C	
100K Homo Polled Parent Verified PAF			CALVING EASE: ★★	

This low birthweight bull is moderate framed, thick throughout and big bodied. His dam has a great udder and makes a bold ribbed individual for this year's sale. Top 5% MCE, CE & Marbling, 10% BW.





LOT 405

MJT 497K GARCIA 405M

BW 92 | Adj 205 752 | Jan 1 Wt 2140

REG #: MC880759 | MJT 405M | DOB: 26-Feb-24

SIRE: **ELDER'S GARCIA 907G**

WCR COMMISSIONER 593
ELDER'S REVEALING 92E

DAM: **JWX KIKI 497K**

CEDARLEA EPIC 14E
JWX BLANCHE 197B

This nice birthweight, good footed, high growth bull is one that's made an impact as a heifers first calf. Great fronted, long bodied, a frame size bigger than the offering average, but still carrying the capacity and muscle we expect from our bulls. He's backed by a sweet Cedarlea daughter offering a little different spin from our general offering.

100K | Homo Polled | Parent Verified | PAF

CALVING EASE: ★





LOT 408

MJT 27K MANIFEST 408M

BW 80 | Adj 205 660 | Jan 1 Wt 1935

REG #: MC880886 | MJT 408M | DOB: 5-Apr-24

SIRE: **BECK'S MANIFEST 2122J**

LT AFFINITY 6221

BECK'S DISCO 38G

DAM: **MJT 41H MISS NAVIGATOR 27K**

SPARROWS TRIMAX 41H

PVF MISS NAVIGATOR 24X

100K | Homo Polled | Parent Verified | PAF

CALVING EASE: ★★

These Manifest sons have time and time again proven to be smaller cow and heifer savvy breeding options. Low BW with performance and grow, the daughters are nice uddered and productive. This moderate framed, stout and attractive fronted bull ranks Top 10% BW and Marbling, Top 25% CE.



LOT 411

MJT 102J MANIFEST 411M

BW 100 | Adj 205 682 | Jan 1 Wt 2045

REG #: MC898515 | MJT 411M | DOB: 10-Apr-24

SIRE: **HIGH BLUFF JJ 85J**

HIGH BLUFF GAME ON 78G

DRD LEDGER STAR 942D

DAM: **PVF 4G SUSIE 102J**

PVF JOHNNY 4G

PVF SUSIE 910G

100K | Homo Polled | Parent Verified | PAF

CALVING EASE: ★

This bull is a broad made, big middled, unit. The Johnny daughters have been great young producers, with top tier udder suspension and teat sizing. 411M is good muscled bold ribbed but balanced throughout his skeleton.



Dam of Lot 412

LOT 412

MJT 37H JJ 412M

BW 92 | Adj 205 705 | Jan 1 Wt 1990

REG #: MC880855 | MJT 412M | DOB: 11-Apr-24

SIRE: **HIGH BLUFF JJ 85J**

HIGH BLUFF GAME ON 78G

DRD LEDGER STAR 942D

DAM: **PVF MISS SAMMY 37H**

PVF TANK 7E

GLT MISS REVY 188B

100K | Homo Polled | Parent Verified | PAF

CALVING EASE: ★

This JJ son is out of a big bodied, small teated female that can raise them. Moderate BW with a 3 lb ADG on just mom in the river hills is a big ask but she accomplished it. Big topped, longer bodied, and big boned. 412M is an attractively put together package. Top 5% WW, 10% MWW and SC.



LOT 413

MJT 112J MORENO 413M

BW 106 | Adj 205 738 | Jan 1 Wt 1950

REG #: MC880868 | MJT 413M | DOB: 12-Apr-24

SIRE: **SPARROWS MORENO 153J**

SPARROWS LIRIANO 660D

SPARROWS MAGNIFIQUE 4C

DAM: **PVF MISS FIREFLY 112J**

PVF TANK 7E

PVF JACKPOT 607D

100K | Hetero Polled | Parent Verified | PAF

CALVING EASE: ★

This Moreno son is a growthy, larger framed option out of a strong young PVF Tank daughter. She has a great udder and throws some extra growth into her offspring, this fellows no exception.



Dam of Lot 419

LOT 419 MJT 803F MORENO 419M

BW 100 | Adj 205 745 | Jan 1 Wt 2080 | REG #: MC880826 | MJT 419M | DOB: 14-Apr-24

SIRE: **SPARROWS MORENO 153J**

SPARROWS LIRIANO 660D
SPARROWS MAGNIFIQUE 4C

DAM: **PVF TOUCHDOWN 803F**

PVF KING ARTHUR 1D
PVF MISS DIANE 609D

100K | Hetero Polled | Parent Verified | PAF

CALVING EASE: ★

This performance bull is seriously thick, with plenty of muscle and a great foot. He's bold in every way with an attractive skull, solid structural makeup, and backed by a strong female that continues to produce. A 3.15 ADG, with the King Arthur female on the bottom side makes this guy a great candidate as a herd bull acquirement.

LOT 424 MJT 46K MANIFEST 424M

BW 104 | Adj 205 682 | Jan 1 Wt 1925 | REG #: MC880891 | MJT 424M | DOB: 17-Apr-24

SIRE: **BECK'S MANIFEST 2122J**

LT AFFINITY 6221
BECK'S DISCO 38G

DAM: **MJT 41H SECOND LADY 46K**

SPARROWS TRIMAX 41H
PVF SECOND LADY 735E

100K | Homo Polled | Parent Verified | PAF

CALVING EASE: ★



This is one of the Manifest sons with a little more growth than most. Long bodied, big boned, and out of a frame size larger female than some others in her year group, but strong in her udder structure.





LOT 428

MJT 504C MORENO 428M

BW 86 | Adj 205 678 | Jan 1 Wt 1975 | REG #: Sells w/o Papers | MJT 428M | DOB: 18-Apr-24

SIRE: **SPARROWS MORENO 153J**

SPARROWS LIRIANO 660D
SPARROWS MAGNIFIQUE 4C

DAM: **PVF MISS SILVERSMITH 504C**

PVF TANK 7E
RAR FOXXY LADY 20U

| Polled |

CALVING EASE: ★

A low birthweight option here backed by a big middled productive female that has stood the test of time. Soft middled, long spined, and big boned with a solid foot underneath him makes him a solid breeding piece.



LOT 432

MJT 31K MANIFEST 432M

BW 94 | Adj 205 637 | Jan 1 Wt 2025 | REG #: MC882016 | MJT 432M | DOB: 20-Apr-24

SIRE: **BECK'S MANIFEST 2122J**

LT AFFINITY 6221
BECK'S DISCO 38G

DAM: **MJT 41H DESTINY 31K**

SPARROWS TRIMAX 41H
GEN DESTINY 1B

100K | Homo Polled | Parent Verified | PAF

CALVING EASE: ★

A solid first calf off a Trimax daughter, 432M is a bigger framed, highly expressive muscle shaped bull with a bold rib. Smooth shouldered, with some extra length in both his spine and front third make him an attractive package. Top 5% TSI, 10% MARB & Fat, 25% REA & CW.



LOT 433

MJT 608D JJ 433M

BW 108 | Adj 205 805 | Jan 1 Wt 1940 | REG #: MC880798 | MJT 433M | DOB: 20-Apr-24

SIRE: **HIGH BLUFF JJ 85J**

HIGH BLUFF GAME ON 78G
DRD LEDGER STAR 942D

DAM: **PVF END OF THE LINE 608D**

XAL FIRESTRUCK 3Z
RAR FIRST LADY 30X

100K | Homo Polled | Parent Verified | PAF

CALVING EASE: ★

433M is out of a proven cow that knows how to add some pounds to them. This guy posted a 3.40 ADG in some harsh terrain, going on to grow out into a stout muscled. Big bodied bull with a solid skull. His dam is a great uddered Firestruck female who always weans off a sizeable one.



Dam of Lot 433



LOT 435

MJT 104J JJ 435M

BW 84 | Adj 205 775 | Jan 1 Wt 2010 | REG #: MC880865 | MJT 435M | DOB: 20-Apr-24

SIRE: **HIGH BLUFF JJ 85J**

HIGH BLUFF GAME ON 78G
DRD LEDGER STAR 942D

DAM: **PVF MISS PARIS 104J**

PVF TANK 7E
PVF MISS MERIT 515C

100K | Hetero Polled | Parent Verified | PAF

CALVING EASE: ★★

This guys a low birthweight, fast growing unit. Thick bodied, stout made, heavy muscled while still retaining the overall softness throughout his hide, and boldness in his rib we love to see. A fantastic young producer for a mom, with an udder that could be painted any colour and called great, and a great foot underneath him. Top 10% REA, WW, & MCE, 15% CE & SC, 20% BW, YW, & TSI.



Dam of Lot 435



Dam of Lot 437

LOT 437 MJT 721E MORENO 437M

BW 96 | Adj 205 691 | Jan 1 Wt 2100 | REG #: MC880813 | MJT 437M | DOB: 21-Apr-24

SIRE: **SPARROWS MORENO 153J**

SPARROWS LIRIANO 660D
SPARROWS MAGNIFIQUE 4C

DAM: **PVF ALL ALONE 721E**

PVF LITTLE DOUBT 2C
PVF MISS MOLLY 522C

100K | Homo Polled | Parent Verified | PAF

CALVING EASE: ★

This cow is a certified producer; her daughters are sweet and go above and beyond in terms of functionality. She's great uddered, big footed, and this guy reads very similar in terms of foot, capacity, and overall mass even in a more compact package. He gained well and pushed down on the scale admirably despite his slightly moderate stature. Top 15% MARB & SC

LOT 440 MJT 11K MANIFEST 440M

BW 90 | Adj 205 685 | Jan 1 Wt 2000 | REG #: MC880884 | MJT 440M | DOB: 22-Apr-24

SIRE: **BECK'S MANIFEST 2122J**

LT AFFINITY 6221
BECK'S DISCO 38G

DAM: **MJT 41H HAYES 11K**

SPARROWS TRIMAX 41H
PVF HAYES 701E

100K | Homo Polled | Parent Verified | PAF

CALVING EASE: ★



Moderate BW as heifer first calf, 440M is lean a little more growth, frame, and length from his Trimax sired dam. Gotta love his skull and general look about his front end. Top 25% CE & BW.





LOT 441 MJT 135J TAMARANDO 441M

BW 115 | Adj 205 771 | Jan 1 Wt 1990 | REG #: MC880878 | MJT 441M | DOB: 23-Apr-24

SIRE: **DC/JDJ TAMARANDO K496**

DC/CJC SUGAR DADDY G1118 P

JDJ MS CUBAN E523

DAM: **PVF MISS TULIP 135J**

PVF HIGHLAND DREAM 43F

PVF ESMERALDA 707E

100K | Hetero Polled | Parent Verified | PAF

CALVING EASE: ★

This guy gets his extra BW from obvious places, his monstrous length, extra frame, and some serious bone. This was a smaller cow that calved him out unassisted thanks to his smooth shoulder that starts off a solid center third.

LOT 443

MJT 136J JJ 443M

BW 102 | Adj 205 709 | Jan 1 Wt 1950 | REG #: MC898516 | MJT 443M | DOB: 23-Apr-24

SIRE: **HIGH BLUFF JJ 85J**

HIGH BLUFF GAME ON 78G

DRD LEDGER STAR 942D

DAM: **PVF 4G HIGHLAND LASSIE 136J**

PVF JOHNNY 4G

PVF HIGHLAND LASSIE 937G

100K | Hetero Polled | Sire Verified | PAF

CALVING EASE: ★

443M is a performance-oriented bull. The 136J dam is a superior uddered, low maintenance cow that can raise them right. So attractive phenotypically, in his front end, middle third, and general muscle and thickness and has a balanced EPD profile, performing at the top for several traits.



LOT 447 MJT 937G JJ 447M

BW 122 | Adj 205 705 | Jan 1 Wt 1950 | REG #: MC880851 | MJT 447M | DOB: 24-Apr-24

SIRE: **HIGH BLUFF JJ 85J**

HIGH BLUFF GAME ON 78G

DRD LEDGER STAR 942D

DAM: **PVF HIGHLAND LASSIE 937G**

HTA VELOCITY 548C

RAR HIGHLAND LASS 6B

100K | Homo Polled | Parent Verified | PAF

CALVING EASE: ★

447M is a strong topped, broad hiped, powerhouse bull with plenty of dimension and center mass. Backed by a big bodied power based cow, he boasted an ADG of 3.34 and has continued a strong trend since. Top 1% WW, 2% YW, SC & CW, 10% TSI.



LOT 448 MJT 139J JJ 448M

BW 98 | Adj 205 719 | Jan 1 Wt 1910 | REG #: MC881049 | MJT 448M | DOB: 25-Apr-24

SIRE: **HIGH BLUFF JJ 85J**

HIGH BLUFF GAME ON 78G

DRD LEDGER STAR 942D

DAM: **PVF NEW BEGINNINGS 139J**

PVF TANK 7E

PVF END OF THE LINE 608D

100K | Homo Polled | Parent Verified | PAF

CALVING EASE: ★

The PVF Tank daughters have been strong uddered, good footed females that go on to produce some females. Big bodied, strong muscled through his stifle and hip. Plenty of growth in a soggy build here.



LOT 449 MJT 905G MORENO 449M

BW 90 | Adj 205 690 | Jan 1 Wt 1975 | REG #: MC880843 | MJT 449M | DOB: 25-Apr-24

SIRE: **SPARROWS MORENO 153J**

SPARROWS LIRIANO 660D

SPARROWS MAGNIFIQUE 4C

DAM: **PVF GLITTER 905G**

PVF KING ARTHUR 1D

PVF LADY VELOCITY 722E

100K | Horned | Parent Verified | PAF

CALVING EASE: ★

449M is a easy moving, low birthweight, very sound bull. Loose hided, expressive over the top of his rib, through his hindquarter and down into his lower third. This guy is a well balanced breeding piece that can get the job done.



Maternal Brother of Lot 449





LOT 450

MJT 809F JJ 450M

BW 95 | Adj 205 761 | Jan 1 Wt 2000

REG #: MC880830 | MJT 450M | DOB: 25-Apr-24

SIRE: **HIGH BLUFF JJ 85J**

HIGH BLUFF GAME ON 78G
DRD LEDGER STAR 942D

DAM: **PVF RED SPRING 809F**

RAMMER DEON 636D
PVF WHITE CHOCOLATE 519C

This guy is a solid piece, smooth shouldered, wide based, thick topped, and hard muscled while retaining some softness and look. All around he's a well-balanced bull with a good birthweight, solid ADG, and backed by a great uddered proven dam. Top 20% CE, BW, & MARB.

100K | Hetero Polled | Parent Verified | PAF

CALVING EASE: ★





LOT 452 MJT 44K MANIFEST 452M

BW 88 | Adj 205 678 | Jan 1 Wt 1895 | REG #: MC880890 | MJT 452M | DOB: 25-Apr-24

SIRE: **BECK'S MANIFEST 2122J**

LT AFFINITY 6221
BECK'S DISCO 38G

DAM: **MJT 54H MISS DAISY 44K**

ELDER'S HURRICANE 54H
PVF MISS DAISY 36H

100K | Homo Polled | Parent Verified | PAF

CALVING EASE: ★

Low birthweight meat wagon. Big centered, thick throughout his skeleton, explosive in his rib, and well muscled. This bull started small and packed on the lbs off his first calving mothers' milk. His dam is a strong Hurricane daughter, of which we only have a few in quantity that are high in quality. Top 2% CE & BW, 10% TSI & MARB.

LOT 455 MJT 28K MANIFEST 455M

BW 94 | Adj 205 754 | Jan 1 Wt 1980 | REG #: MC880887 | MJT 455M | DOB: 26-Apr-24

SIRE: **BECK'S MANIFEST 2122J**

LT AFFINITY 6221
BECK'S DISCO 38G

DAM: **MJT 41H FIREWATER 28K**

SPARROWS TRIMAX 41H
PVF FIREWATER 829F

100K | Homo Polled | Parent Verified | PAF

CALVING EASE: ★



455M is a bigger framed, growthier bull. Long spined, strong through the top of his skeleton, and elevated through his front end. His dam is a tight uddered, bigger framed female that is sweet fronted.





LOT 457

MJT 107J JJ 457M

BW 103 | Adj 205 748 | Jan 1 Wt 1955 | REG #: MC880866 | MJT 457M | DOB: 29-Apr-24

SIRE: **HIGH BLUFF JJ 85J**

HIGH BLUFF GAME ON 78G

DRD LEDGER STAR 942D

DAM: **PVF MISS ROXY 107J**

PVF TANK 7E

GEN DESTINY 1B

100K | Homo Polled | Parent Verified | PAF

CALVING EASE: ★

This bull is a slightly bigger framed performance bull that had an ADG of 3.23. Long spined, nicely balanced, well muscled, and just attractive throughout. Top 10% WW, TSI, & CW. Top 15% MARB.



LOT 459

MJT 523C JJ 459M

BW 100 | Adj 205 738 | Jan 1 Wt 1940 | REG #: MC880794 | MJT 459M | DOB: 1-May-24

SIRE: **HIGH BLUFF JJ 85J**

HIGH BLUFF GAME ON 78G

DRD LEDGER STAR 942D

DAM: **PVF ANNIE 523C**

HTA NEVADA 327A

PVF MISS KYLA 146K

100K | Homo Polled | Parent Verified | PAF

CALVING EASE: ★

This bull's 11-year-old dam reared a sale favourite last year, she's strong uddered, exceptional, footed and phenotypically attractive. Bigger framed than last years counterpart, 459M has great middle mass, muscle shape and bone.



Maternal Brother of Lot 460

LOT 460

MJT 188B JJ 460M

BW 96 | Adj 205 648 | Jan 1 Wt 1875 | REG #: MC880913 | MJT 460M | DOB: 30-Apr-24

SIRE: **HIGH BLUFF JJ 85J**

HIGH BLUFF GAME ON 78G

DRD LEDGER STAR 942D

DAM: **GLT MISS REVY 188B**

CIRCLE CEE DISTINCT 20X

GLT MISS COURAGE 88Y

100K | Homo Polled | Parent Verified | PAF

CALVING EASE: ★

This stout made, loose hided bull is from a great uddered, 10-yr-old Distinct daughter. This trusted and proven cow raised a solid bull with a comfortable birthweight that didn't skimp in performance. Top 10% MARB, 25% WW.



LOT 462

MJT 61H MORENO 462M

BW 105 | Adj 205 759 | Jan 1 Wt 2100 | REG #: MC880860 | MJT 462M | DOB: 2-May-24

SIRE: **SPARROWS MORENO 153J**

SPARROWS LIRIANO 660D

SPARROWS MAGNIFIQUE 4C

DAM: **PVF MISS FOXXY 61H**

STEPPLER JENSON 233F

PVF FOXXY 712E

100K | Homo Polled | Parent Verified | PAF

CALVING EASE: ★

462M is a beast. Backed by a Steppler Jenson daughter in her prime, this heavy muscled, big bodied bull posted a 3.11 ADG. High octane performance in a loose hided, structurally correct package. Top 1% WW, YW, CW, & TSI, 10% REA.

LOT 466 MJT 605D TAMARANDO 466M

BW 85 | Adj 205 589 | Jan 1 Wt 1875 | REG #: MC880932 | MJT 466M | DOB: 9-May-24

SIRE: **DC/JDJ TAMARANDO K496**DC/CJC SUGAR DADDY G1118
JDJ MS CUBAN E523DAM: **PVF HURRICANE 605D**LT LEDGER 0332
RAR COUNTESS 5B

100K | Hetero Polled | Parent Verified | PAF

CALVING EASE: ★★

This moderate framed, low birthweight bull in our offering comes from a top uddered, high-capacity Ledger daughter that has proven her merit. Extremely stout, expressive in his muscle shape and bold in his center mass, 466M is a compact package to add lbs to the calf crop.



Dam of Lot 466

LOT 468 MJT 128J MORENO 468M

BW 96 | Adj 205 779 | Jan 1 Wt 1890 | REG #: MC880876 | MJT 468M | DOB: 10-May-24

SIRE: **SPARROWS MORENO 153J**SPARROWS LIRIANO 660D
SPARROWS MAGNIFIQUE 4CDAM: **PVF LOTTO MAXX 128J**STEPPLER JENSON 233F
PVF SOMETHING NEW 709E

100K | Hetero Polled | Parent Verified | PAF

CALVING EASE: ★

This bigger framed Moreno son is out of another up-and-coming Jenson daughter. These females have been consistently well uddered and sound footed. Combine that with his comfortable birthweight, impressive growth curve at a 3.15 ADG, and natural shape, he's the right kind.

**LOT 470 MJT 115J JJ 470M**

BW 96 | Adj 205 713 | Jan 1 Wt 1890 | REG #: MC880871 | MJT 470M | DOB: 11-May-24

SIRE: **HIGH BLUFF JJ 85J**HIGH BLUFF GAME ON 78G
DRD LEDGER STAR 942DDAM: **PVF HOTSTUFF 115J**PVF TANK 7E
PVF ANNIE 523C

100K | Homo Polled | Parent Verified | PAF

CALVING EASE: ★

A nice birthweight bull out of a solid young Tank daughter. This JJ son is growthy, big boned, and long spined. Solid center mass and expression through his top, 470M is a complete hairy package.

**LOT 476 MJT 55K MANIFEST 476M**

BW 96 | Adj 205 740 | Jan 1 Wt 1925 | REG #: MC880893 | MJT 476M | DOB: 15-May-24

SIRE: **BECK'S MANIFEST 2122J**LT AFFINITY 6221
BECK'S DISCO 38GDAM: **MJT 41H ALL ALONE 55K**SPARROWS TRIMAX 41H
PVF ALL ALONE 721E

100K | Hetero Polled | Sire Verified | PAC

CALVING EASE: ★

This Manifest son is a well balanced big boned bull, smooth in his shoulder layout, attractive in his front third, and with enough dimension and muscle that befits the breed. If you like them with some heel and bone, he's your guy.





LOT 483			MJT 48H JJ 483M	
BW 97	Adj 205 716	Jan 1 Wt 1900	REG #: MC880859 MJT 483M DOB: 23-May-24	
SIRE: HIGH BLUFF JJ 85J			HIGH BLUFF GAME ON 78G SPARROWS MAGNIFIQUE 4C	
DAM: PVF MISS MARY 48H			PVF TANK 7E PVF MISS PERLATO 708E	
100K Homo Polled Parent Verified PAF			CALVING EASE: ★	



Maternal Granddam of Lot 483



Maternal Brother of Lot 483

483M is a moderate statured, high performing bull out of a nice Tank daughter who has hit her stride. He's bold everywhere, in his hip, his presence, his muscle pattern, and throughout his rib shape. This guys a hairy bull we think will make quite the breeding piece.



LOT 487			MJT 36H MORENO 487M	
BW 105	Adj 205 720	Jan 1 Wt 1900	REG #: MC882008 MJT 487M DOB: 12-Jun-24	
SIRE: SPARROWS MORENO 153J			SPARROWS LIRIANO 660D SPARROWS MAGNIFIQUE 4C	
DAM: PVF MISS DAISY 36H			HTA VELOCITY 548C PVF HURRICANE 605D	
100K Hetero Polled Parent Verified PAC			CALVING EASE: ★	

A compact well balanced younger bull from a great uddered, solid footed dam. This Moreno son has the pieces that make a solid package. Clean shouldered, thick topped, and with enough muscle to make an impression, he's an attractive piece.



LOT 489**MJT 109J MORENO 489M**BW Adj 205 Jan 1 Wt
105 701 1890

REG #: MC898520 | MJT 489M | DOB: 1-Jun-24

SIRE: **SPARROWS MORENO 153J**SPARROWS LIRIANO 660D
SPARROWS MAGNIFIQUE 4CDAM: **PVF 4G KIWI 109J**PVF JOHNNY 4G
PVF KIWI 908G

100K | Homo Polled | Parent Verified | PAF

CALVING EASE: ★

This young PVF cow raised a soggy middled bull to put in the sale, he's big boned, elevated fronted. Wide through his pins, and down to his base, 489M has a solid hair coat and a lot to offer.



Maternal Brother of Lot 489

Thank You

To our 2025 Buyers

4 Harts
Black Chrome Livestock
Blade Angus
Bovigen
BT Farms
Calerclun Cattle Co
Cam Pearman
Cameron Maschmeyer
Candace MacGougan
CC Ranch
Chesterman Farms
Church Ranch (Neil)
Clark Ranching
Darren Farkhanel
David Yablonski
Diamond A
Dodds Ranching
Dolan Contracting
Double J Land & Cattle
Double RN
Doug Christensen
DSSTRE B29 Cattle
Duff Cattle company
Dustin Rissling
End of the Trail Angus
Frank Herefords
Garry Krupski
George Ranching
Gory Farms

Hays Stock Grazing
Hadwin Cattle Company
HBC Hughendon
Hillsvale Colony
Jason Belland
Jess Verstappen
JPM Farms
Kenneth Sidener
Kyle Kjenner
Lake Thelma Farms
Lanco Land & Cattle
Lazy M Farms
Lee Perrin
MacRae
Matt Marquardt
MBK Farms
Melnychuk Land & Cattle
Mike Nielson
Mitchell Farms
Morgan Marquardt
MWC Investments
Newell Cattle Grazing
Nicole & James Peat
Nilray Farms
Northwestern Polytech
Pat Lawrence Contracting ltd
Patrick Mathiot Farms
Pedersen Cattle
Peter Schwenk

Pibroch Colony
Pioneer Ridge Ranch
Pipke Farms
Queeny Creek Livestock
Quill Lake Colony
Rainy Creek Cattle
Riley Sinclair
Rod Paulgaurd
Rodney Perrin
Russel Abel
Rylie Sinclair
Schmidt Farms
Schwenk Farms and Feedlot
Shiloh Cattle Company
Snowshoe Cattle / Genoa Livestock
Stalwick Livestock
Steve & Jess Oldenburg
Sunderland hog Farms
SunnyBend Farming
Thompson Cattle Company
Trent Thronson
Tingley Enterprises
TK Landin Cattle
Travis Gosier
Travis James
Veteran Farming
Westman Farms
Wild T Farms
Winchester Cattle Company



LOT 41

MJT 877K CLASSIC 41M

BW 90 | Adj 205 784 | Jan 1 Wt 2050

REG #: | MJT 41M | DOB: 15-Apr-24

SIRE: **DMM CANADIAN CLASSIC 12G** DAMERON C-5 AMERICAN CLASSIC
DMM MISS ESSENCE 5C
DAM: **MJT KIT 0877K** HAROLDSON'S JVV ROYAL 24E
MJT 220D KIT 411F

Polled

CALVING EASE: ★

A little more performance in this first calvers first showing. 41M is extremely balanced with a touch more frame and length of spine. Strong topped, attractive fronted, with good muscle expression and a great foot.



LOT 70

MJT 863K RENOVATION 70M

BW 77 | Adj 205 652 | Jan 1 Wt 1990

REG #: | MJT 70M | DOB: 23-Apr-24

SIRE: **BROOKING RENOVATION 1019** S A V RENOVATION 6822
BROOKING BEAUTY 8059
DAM: **MJT 669H CINDY 863K** MJT ROCKY ET 669H
MJT 93Z CINDY 122C

Polled

CALVING EASE: ★★★

This lower birthweight baldie bull is long bodied, thick hipped, and bold in his rib shape. An exceptionally footed bull with plenty of bone, while backed by a strong first calver puts this bull in a solid spot in our small, but quality F1 offering.



LOT 314

MJT 50F HEARTLAND 314M

BW 96 | Adj 205 837 | Jan 1 Wt 2300

REG #: | MJT 314M | DOB: 27-Apr-24

SIRE: **MICH WHEATLAND BULL 942G** EXAR BLUE CHIP 1877B
P2C BEAUTY 531 DT
DAM: **GVR MISS W31 50F** LFE COMMISSIONER 811Z
TNT MISS W31

Polled

CALVING EASE: ★

This Sim/Angus bull is out of a big middled, female we had bought from Rust Mountain that knows how to raise them. Bigger framed, heavy muscled, and long bodied, 314M has pushed down the scale at every opportunity. Big foot and big potential.



The Heart of the **HERD AWARD**

We believe strongly that Agriculture provides an excellent foundation for shaping tomorrow's leaders and always embrace opportunities to support our youth. We are excited to present the inaugural year for the "Heart of the Herd" award at MJT.

To be Presented Annually at the MJT Back to the Basics Bull Sale.

This scholarship will be awarded to a deserving youth who embodies the quiet strength of true leadership. This scholarship is intended to honour individuals who demonstrate a commitment to others, strengthen teams, communities, and youth programs — the kind of individual who doesn't seek the spotlight but shines in their consistent commitment to others.

If you know a youth who leads through action, integrity, and service, please consider nominating them for this award.

Selection is based on the following core qualities:

1. Leadership by Example

- Demonstrates responsibility, work ethic, and positive influence through actions, not just words.

2. Mentorship

- Actively encourages and supports peers, particularly those younger or with less experience. Willingly shares knowledge, time, and encouragement.

3. Character & Kindness

- Consistently treats others with respect, compassion, and generosity of spirit.

4. Contribution to Team & Community

- Plays a meaningful role in the success of group efforts and events, often working behind the scenes to ensure things run smoothly and others succeed.

5. Humility

- Avoids recognition or praise, yet their impact is quietly felt by many.

Candidates must be nominated by a third party (coach, mentor, educator, program leader, peer, family or community member)

- Candidates must be between the ages of 15 to 25
- This is a cash award that is intended to support learning experiences, self-development, or herd building
- Three finalists will be selected annually
- The award will be formally announced and presented at the MJT Cattle Bull Sale
-

Please send an email to info@mjt.ca including the nominee's name, address and phone number, and an explanation of why you would like to nominate them for this award.

A photograph of a herd of cattle in a field. In the foreground, a white and brown cow is on the left, and a black cow is in the center. Behind them, several other black cows are visible. The field is dry and yellowish-brown, with some snow patches. The background shows a line of bare trees under a clear sky.

We know that when you're making bull selections for your breeding program, there are many places to choose from.

Thank you for your time and consideration of our offering. **~ The Trefiahs**

MJT CATTLE CO LTD.
RR1, Edgerton, AB, T0B 1K0

If you wish to be removed from our mailing list, please drop
an email to info@mjt.ca or send a text message to
780-722-3032. Please include your full name and mailing
address, or a picture of your address from the catalog.



CATTLE CO. LTD.
Trusted for Generations

FEBRUARY 14, 2026, 3PM SALE TIME | AT THE FARM, EDGERTON, AB
OPEN HOUSE, FEBRUARY 7, 2026