

Holloway Farms Ltd.

16th Annual Rancher's Bull Sale

NEW SALE DATE Friday, February 13, 2026 at 1:00pm
Sale Barn at Holloway Farms



Selling:
45 Two Year Old Bulls
6 Purebred Bred Heifers

Online at DLMS

Internet Bidding Available



For more information call:
Mark Sholgan 780-699-5082 or Purebred Team 780-991-3025

Les & Karen Holloway
P: 403-882-3416
C: 403-740-0380

Anthony & Sam Plett

Sale Barn at Holloway Farms
13215 HWY 599, Castor, AB
www.hollowayfarmsltd.ca



Les & Karen Holloway



*Anthony & Sam Plett
Ty, Chance, Rose, Eve & Reid*



*Barry & Carmen Sommer
Charlie, Livia, William & Maverick*



*Adam & Kelly Vastenhout
Adiya, Dani & Kaeden*



*Jeff & Amy Holloway
Finn, Casey & Riley*

Welcome to our 16th Annual Ranchers Production Sale

Already another year has come and gone, with the familiar cycle of cattle and crops, ups and downs. This year seemed to have a few more ups. We enjoyed a summer with enough rain and cool enough temperatures to come out with very good crops, lots of feed and pretty good hay and grass. The cattle came in from pastures looking happy and healthy.

We hope the cattle in this sale will speak for themselves. Our commitment is to raise quality ranch cattle with hair and performance that will thrive in a host of different conditions. We believe the bulls and heifers we are offering this year will live up to that. We are very proud of the Hereford breed and what we can offer to the cattle industry. We are behind our cattle 100% and will do what we can to see each one of our customers is satisfied. We have DNA on all bulls offered for sale.

We again encourage you to watch the videos on DLMS. If you are not able to attend the sale you can bid online or contact us directly. We are open to discuss your needs and work with you to find the animal that will help accomplish your goals.

Lunch starts at 11:30 am at the sale barn. The sale begins at 1:00 pm MST.

Come early to view the cattle on offer!

The Next Generation



General Information

Date & Time: The sale will begin at 1:00 pm MST on Friday, February 13, 2026

Location: The sale will be held at the Holloway Sale Barn located at 13215 Secondary Highway 599 east of Castor, AB.

Site Unseen Program: If you can't make it to the sale, please let us know and we will go over the sale cattle together. If you wish to bid, we will have a representative do so on your behalf within your price range or you may view the sale through **DLMS** and bid through DLMS or by phone.

Sale Day phones: 403-740-0380 | 403-331-0611 | 403-376-2282

Health: Cattle will be sold in compliance with the health laws of the Province of Alberta. This is a tuberculosis and brucellosis free area. Females are all vaccinated for IBR. All sale cattle have been treated with Ivomec. All bulls have been vaccinated for foot rot and semen tested. Horned sale animals are dehorned with paste at birth. There are also a good number of polled animals in our herd.

Warranty Program: For 10% of the purchase price we will warranty your bull by replacement or refund during the first breeding season.

Terms: Terms of sale are full cash payment sale day, unless prior arrangements have been made with Les. Animals are the buyer's responsibility as soon as sold. We are continuing the warranty program started by request a few years ago. We will, for a 10% fee, work with you to replace a bull, loan a bull, or refund the purchase price of any bull not performing satisfactorily during the first breeding season. We are asking that any animal being left at the farm for any length of time be on this program. We will continue to work with you on flexible delivery times. There may be a nominal fee for boarding.

Insurance: Insurance can be arranged through Stockman's Insurance at 403-501-1326 or Maureen Balog at 403-320-1980

Announcements: Announcements from the auctioneer supersede any printed material.

All Persons: All persons attending the sale do so at their own risk. Owners and management assume no liability, legal or otherwise, for any accidents that may occur.

EDDs: Accurate at time of printing.

Important Contacts and Sale Staff

Contacts:

Les Holloway: 403-740-0380 (cell)
403-882-3416 (home)

Anthony Plett 403-376-2282 (cell)

Sale Day Phones: 403-740-0380
403-331-0611

Watch Sale Live: www.dlms.ca

Video of lots on offer available by January 31.

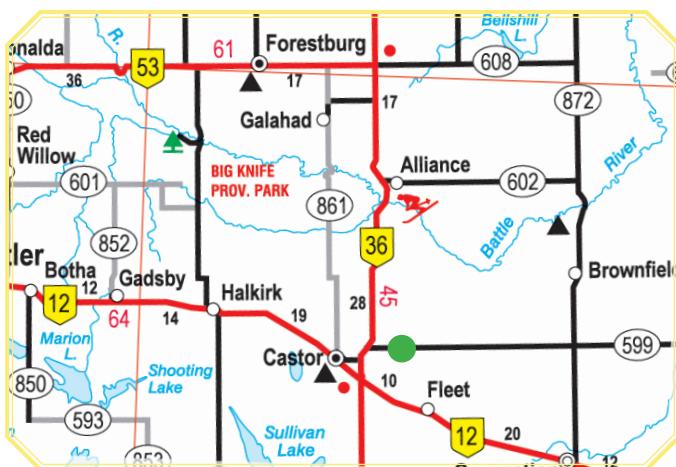
Auctioneer:

Bob Balog: 403-320-1980

Ring Service:

Louis Balog: 403-331-0611

Sale Location:



The Holloway Farms Sale Barn is located at 13215 Secondary Highway 599 - 2.5 miles east of the junction of Highway 36 and secondary Highway 599.

Show sticks will be provided to all buyers!

Reference Sires

SPH
3F

Reference Sire

January 22, 2018

BW: 95

ADJ WW: 870

ADJ YW: 1307

BAR-RZ 23B FULTON 3F {DLF HYF IEF MSUDF}

	BW	WW	YW	Milk	TM
EPD	+6.1	+65.6	+104.2	+27.1	+59.9
ACC	0.72	0.56	0.56	0.44	-



SHF RIB EYE M326 R117
SHF TAHOE R117 T100
SHF LADY 512 L73
ANL C HAR T100 TAHOE 86 ET 23B
ANL 2K SPECIALIST 7N
ANL 7N MAPLE 86R
ANL 32K MAPLE 47N
GHC FREIGHT 85U
BAR-RZ 85U ROLEX 56X
LAKEFORD LISSY 25S
BAR-RZ 56X BROOKLYN 56B
BBSF 13P TERRORIST ET 57T
BAR-RZ 59T YANISSA 53Y
BAR-RZ 4L PAMELA 25P

We purchased 3F largely on the strength of the females behind him. He's developed into a thick, easy fleshing sire. We are happy with his results to date.

PTT
10F

Reference Sire

March 23, 2018

BW: 92

ADJ YW: 1421

JNHR TIMBER KING 10F {DLF HYF IEF MSUDF DBF}

	BW	WW	YW	Milk	TM
EPD	+6.6	+64.3	+101.9	+19.7	+51.9
ACC	0.74	0.55	0.52	0.41	-



FE 32P DANDY RETURN 55T
JNHR NEW LINE FE 709Z
JNHR ROSIE 430R
JNHR NEW TIMBER KING 238B
REMITALL TIMBER 122T
JNHR MARVEL 771Z
JNHR EMILY 631S
BAR-RZ 64N STOCKTON 43S
JNHR STOCKTON 868Y
JNHR JUSTINE 572U
HOLLOW 868Y STELLA 10B
BP 146D SANDMAN 108J
WABASH FANCY 154S
WABASH CARLIE 128G

We purchased 10F largely to produce the cows we would like to have in our herd. From what we have seen to date, it was a good move. We know a good deal about the great females behind him. We refer to him as the "big bull" and he's moving and acting like a youth. 10F has good depth of body and extreme length.



SPH
17H

Reference Sire

January 25, 2020

BW: 90

ADJ WW: 892

ADJ YW: 1390

BAR-RZ 32E HOUSTON 17H {DLF HYF IEF MSUDF DBF}

	BW	WW	YW	Milk	TM
EPD	+4.2	+71.6	+123.8	+16.9	+52.7
ACC	0.73	0.59	0.58	0.41	-

MHPH 521X ACTION 106A
 J-BAR-B 106A CAPTIVATE 37C
 J-BAR-B 31N MISS TIER 5 49S
BAR-RZ 37C EVEREST 32E
 BAR-RZ 85U ROLEX 56X
 BAR-RZ 56X BROOKLYN 56B
 BAR-RZ 59T YANISSA 53Y
 MCCOY 3J MATADOR 55M
 MCCOY 55M ABSOLUTE 49S
 MCCOY 58G CONNIE 119L
BAR-RZ 49S LEXI 13X
 BAR-RZ 17F JEFFERSON 32J
 BAR-RZ 59H LEIF 37L
 BAR-RZ 909E HONEY 59H



We got 17H from Bar RZ because of his evenly built frame and the very good females behind him.

WLN
143J

Reference Sire

March 31, 2021

BW: 89

HOLLOW 7D BIG TIME 143J {DLF HYF IEF MSUDF DBP}

	BW	WW	YW	Milk	TM
EPD	+3.4	+41.0	+71.8	+15.4	+35.9
ACC	0.58	0.45	0.44	0.38	-

RST TIME'S A WASTIN' 0124
 GV CMR X161 TIMES UP A152
 GRANDVIEW CMR MS 4003 X161
J-BAR-B A152 DOUBLE TIME 7D
 MCCOY 55M ABSOLUTE 49S
 J-BAR-B ABSOLUTE VICKY 22Z
 J-BAR-B NITRO VICKY 36X
 JNHR TIMBER 714W
 JNHR CONGRESS 57Y
 JNHR SHERRI 631W
HOLLOW P57Y POLLY 109B
 RIVERBRIDGE 40N LAD 18S
 HOLLOW RANDI 42X
 WABASH BETTY 169M



We used several 7D son on heifers in both the purebred and commercial herds with good success on birth weights. He's from a real good cow.

SPH
81J

Reference Sire

March 21, 2021

BW: 103

ADJ WW: 752

ADJ YW: 1161

BAR-RZ 13F KAL 81J {DLF HYF IEF MSUDF}

	BW	WW	YW	Milk	TM
EPD	+5.6	+63.2	+102.2	+23.7	+55.3
ACC	0.67	0.48	0.49	0.38	-

HYALITE ON TARGET 936
 R LEADER 6964
 R MISS REVOLUTION 1009
BAR-RZ 6964 FREEDOM 13F
 BAR-RZ 3P TROY 90T
 BAR-RZ 90T WINSOME 70W
 BAR-RZ 32J SHILO 47S
 GHC FREIGHT 85U
 BAR-RZ 85U ROLEX 56X
 LAKEFORD LISSY 25S
BAR-RZ 56X BRITTANY 85B
 BBSF 68R ULTIMATE 23U
 MCCOY 23U ALISON 82Y
 MCCOY 47N ALISON 70S



We were happy to add 81J to our bull battery because of his make up and the wonderful cows behind him. He adds length and docility to his progeny.

**WLN
217J****Reference Sire**

April 9, 2021

BW: 95

HOLLOW 98G LUCKU 217J {DLF HYF IEF MSUDF}

	BW	WW	YW	Milk	TM
EPD	+5.7	+45.1	+87.0	+27.9	+50.5
ACC	0.63	0.42	0.42	0.34	-



JDH TS 20W CRACKER JACK 23A ET
 BP 23A CRACKER JACK 149C
 BP 44U ECHO 44Y
HOLLOW 149C SUPERMAN 98G
 CC 85X TRAPPER 31Z
 HOLLOW 31Z TRUDY 167B
 HOLLOW 1U DEBBIE 29Z
 JNHR STOCKTON 868Y
 HOLLOW 868Y STOCKY 76B
 HOLLOW CAROL 8X
HOLLOW 76B SARAH 236D
 CC 206P GUNNER 57Y
 HOLLOW C57Y AMY 159B
 HOLLOW 18U MAXINE 4Z

We kept 217J to carry on the Cracker Jack line and he's doing just that.

**WLN
244J****Reference Sire**

April 18, 2021

BW: 88

HOLLOW 3F FELIX 244J {DLF HYF IEF MSUDF DBP}

	BW	WW	YW	Milk	TM
EPD	+4.4	+67.0	+106.4	+27.1	+60.6
ACC	0.63	0.44	0.44	0.37	-



SHF TAHOE R117 T100
 ANL C HAR T100 TAHOE 86 ET 23B
 ANL 7N MAPLE 86R
BAR-RZ 23B FULTON 3F
 BAR-RZ 85U ROLEX 56X
 BAR-RZ 56X BROOKLYN 56B
 BAR-RZ 59T YANISSA 53Y
 BBSF 465Y BRUX 5B
 HOLLOW 5B BRUTUS 89D
 HOLLOW 161X ANDREA 78A
HOLLOW 89D PEGGY 4F
 JNHR ABSOLUTE 180A
 HOLLOW 180A MARION 24D
 JNHR PEARL 861B

We liked 3F so much that we wanted to carry on with 244J. He is much the same in that he is a thick, easy fleshing sire. He also passes on improved scrotal measurement across the board.

**SPH
14K****Reference Sire**

January 20, 2022

BW: 87

ADJ WW: 778

ADJ YW: 1223

BAR-RZ 27C KC 14K {DLF HYF IEF MSUDF}

	BW	WW	YW	Milk	TM
EPD	+3.3	+57.0	+93.4	+23.3	+51.8
ACC	0.65	0.50	0.51	0.42	-



SHF PROGRESS P20
 NJW 76S P20 BEEF 38W ET
 NJW 55N STARDUST 76S
NJW 73S 38W RIMROCK 27C ET
 PW VICTOR BOOMER P606
 NJW P606 72N DAYDREAM 73S
 NJW 94J DEW 72N
 SQUARE-D ABILITY 261U
 BAR-RZ 261U YANIS 61Y
 BAR-RZ 32J SOPHIE 53S
BAR-RZ 61Y AYDA 66A
 REMITALL PATRIOT ET 13P
 BBSF 13P MISS LALIA 14S
 NCX MISS LALIA 409L

8 *14K is an outcross sire that has good depth of rib and has developed into a really long individual with a narrow head that is an easy calving feature.*

**BXC
32K****Reference Sire**

April 2, 2022

BW: 68

Adj WW: 665

CC 8G EASY 32K {DLF HYF IEF MSUDF}

	BW	WW	YW	Milk	TM
EPD	+1.3	+60.2	+96.6	+33.6	+63.7
ACC	0.66	0.48	0.50	0.37	-

NJW 67U 28M BIG MAX 22Z
 NJW 79Z 22Z HEAVY DUTY 72C ET
 BW 91H 100W RITA 79Z ET
COPPERTONE 72C GENESIS 8G
 TH 104U 719T VICTOR 164X
 COPPERTONE 164X KASHMIR 14Z
 BBSF 52U KASHMIR 62X
 CC 20X EASY 3C
 CC 3C EASY 1F
 CC 41Z DAPHNE 62D
CC 1F SARAH 48H
 MCCOY 70Y LANDSCAPE 23A
 CC 23A SARAH 126F
 CC 14N SARAH 125X



We moved 32K into the mature herd bull battery because we were impressed that his offspring from heifers competed very well with the cows. He is an easy fleshing, deep bodied bull who passes those characteristics on to his progeny.

**BXC
132K****Reference Sire**

April 16, 2022

BW: 72

Adj WW: 706

CC 8F EASY 132K {DLF HYF IEF MSUDF}

	BW	WW	YW	Milk	TM
EPD	+2.9	+59.7	+101.2	+23.0	+52.9
ACC	0.64	0.47	0.49	0.38	-

MOUNT DIFFICULT FELLIS Y12
 LAMPORT'S Y12 DOZER 33D
 LAMPORT'S VICTOR LASS 32B
LAMPORT'S 33D FORMULA 8F
 JVJ TCF 719T SURE BET 8Z
 TCF KLR 8Z SHE'S A DIME 424B
 TCF-KLR 3S SOUTHERN BELLE 1X
 LBH 73L STANDARD 268P
 CC 268P TRIUMPH 32U
 CC 129D WENDY 191K
CC 32U LYDIA 122Y
 FE 07Y SUPER 129D
 CC 129D LYDIA 23K
 CC 65U LYDIA 113D



We used 132K on cows this year. He has grown into a long framed sire with a good hair coat.

**WLN
146F****Reference Sire**

March 22, 2018

BW: 90

Adj WW: N/A

HOLLOW 5B BRUTUS 146F {DLF HYF IEF MSUDF DBP}

	BW	WW	YW	Milk	TM
EPD	+4.3	+58.0	+99.3	+18.1	+47.1
ACC	0.70	0.54	0.52	0.40	-

REMITALL SUPER DUTY 42S
 SQUARE-D JOHN WAYNE 465Y
 SQUARE-D ERIN 760U
BBSF 465Y BRUX 5B
 JUSTAMERE BALANCER BANKER 430H
 BBSF 430H QUEEN ET 3M
 SVR SPIRIT QUEEN 179J
 SHPH 2N BEEFMAN 28U
 SHPH 28U THUNDER 151Y
 SHPH 8M PEARL 27S
JNHR PEARL 183B
 BAR-RZ 64N STOCKTON 43S
 JNHR SAMANTHA 105Y
 JNHR JUSTINE 631U



We kept 146F to carry on the 5B line. He has the extra length that we wanted to build into the cow herd.



Jerry



Nelson



Roger



Anthony - Owner

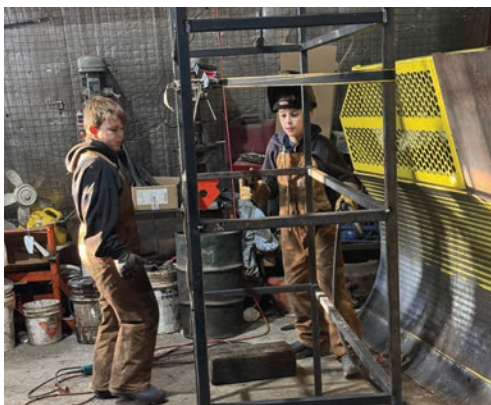


Les - Owner



Enius

*The Farm
Crew*



Ty & Chance



Charlie



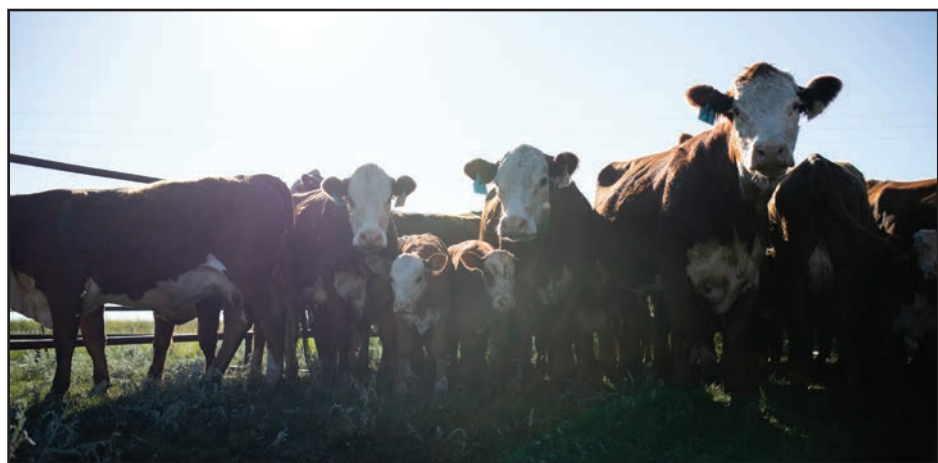
Keith



Taylia



Lauryn



Sale Bulls

WLN 10M	March 22, 2024	BW: 90 lbs	POLLED		BW	WW	YW	Milk	TM
	HOLLOW 32K ALISTER 10M			EPDs	-3.1	+67.2	+108.8	+35.2	+68.8
				ACC	0.49	0.40	0.40	0.34	-



COPPERTONE 72C GENESIS 8G
CC 8G EASY 32K
CC 1F SARAH 48H

BAR-RZ 23B FULTON 3F
HOLLOW 3F FREIDA 127K
HOLLOW 5B BRITTANY 113F

This is a good sized, well made son of 32K from a first calf heifer. We are quite happy with the 32K progeny. The female side is very strong, combining 3F and 5B. Lots of performance in the background of this bull.

WLN 20M	March 25, 2024	BW: 95 lbs	POLLED	BW	WW	YW	Milk	TM	
	HOLLOW 41K COWBOY 20M			EPDs	+5.5	+58.2	+92.1	+14.2	+43.3
				ACC	0.48	0.38	0.38	0.33	-



HOLLOW 5B BRUTUS 146F
HOLLOW 146F CAHILL 41J
HOLLOW 5B BRITTANY 29D

HOLLOW 98A BTM 100E
HOLLOW 100E KITTY 201J
HOLLOW 57Y AMY 38C

WLN 20M is from the 5B line on the sire side with a really strong mother from 100E and 98A. The 11U cow was probably as good a cow as we have had. 57Y is also in his background.

WLN 21M	March 25, 2024	BW: 93 lbs	HORNED		BW	WW	YW	Milk	TM
	HOLLOW 146F CAHILL 21M			EPDs	+5.6	+54.7	+85.0	+8.0	+35.4
				ACC	0.48	0.40	0.39	0.34	-



BBSF 465Y BRUX 5B
HOLLOW 5B BRUTUS 146F
 JNHR PEARL 183B

HOLLOW 161X ANDY 5A
HOLLOW 5A BETTY 184D
 HOLLOW 503U SALLY 94Y

21M is a horned bull from 146F and the 5B line. You'll see good performance and a good hair coat on this bull.

WLN 33M	March 26, 2024	BW: 93 lbs	POLLED	BW	WW	YW	Milk	TM	
	HOLLOW 3F FELIX 33M			EPDs	+5.4	+57.1	+87.1	+26.9	+55.5
				ACC	0.49	0.40	0.40	0.35	-



ANL C HAR T100 TAHOE 86 ET 23B
BAR-RZ 23B FULTON 3F
 BAR-RZ 56X BROOKLYN 56B

HOLLOW 60A KAZAAM 220D
HOLLOW 220D TRUDY 266H
 HOLLOW RIVERESSE 11U

This is a sharp looking, big hipped son of 3F. The maternal side is very strong from both top and bottom. 3F has top cows behind him and on the cow side, both 11U and 6R were top of the herd in their day. There is a nice hair coat on this bull.

WLN 36M	March 27, 2024	BW: 97 lbs	HOMO POLLED	BW	WW	YW	Milk	TM
HOLLOW 3F FELIX 36M				EPDs	+4.9	+49.4	+88.1	+26.7 +51.4
				ACC	0.49	0.40	0.40	0.36 -



ANL C HAR T100 TAHOE 86 ET 23B
BAR-RZ 23B FULTON 3F
 BAR-RZ 56X BROOKLYN 56B

J-BAR-B A152 DOUBLE TIME 7D
HOLLOW 7D TAMMY 6H
 HOLLOW 89D PEGGY 14F

This is another 3F son from a 7D cow. 7D progeny has been very consistent while 3F improves scrotal size across the board. We lost 89D from the cow side after only one season but he had very impressive progeny. Homozygous polled.

WLN 47M	March 28, 2024	BW: 92 lbs	POLLED	BW	WW	YW	Milk	TM
HOLLOW 17H HARRY 47M				EPDs	+4.1	+58.5	+94.2	+26.4 +55.7
				ACC	0.48	0.40	0.40	0.34 -



BAR-RZ 37C EVEREST 32E
BAR-RZ 32E HOUSTON 17H
 BAR-RZ 49S LEXI 13X

HOLLOW 5B BRUTUS 89D
HOLLOW 89D PEGGY 14F
 HOLLOW 76B SARAH 188D

This is a deep bodied, big hipped Houston son with 89D on the cow side. The 14F cow is a very attractive, steady producing, docile animal.

WLN	March 28, 2024	BW: 93 lbs	HOMO POLLED	BW	WW	YW	Milk	TM	
51M	HOLLOW 81J FRED 51M			EPDs	+5.0	+56.1	+80.3	+23.9	+52.0
				ACC	0.48	0.39	0.39	0.34	-



BAR-RZ 6964 FREEDOM 13F
BAR-RZ 13F KAL 81J
 BAR-RZ 56X BRITTANY 85B

JNHR ABSOLUTE 180A
HOLLOW 180A MARION 24D
 JNHR PEARL 861B

51M is a nice, long, good haired son of 81J from a top end cow. 81J produces very docile progeny. Homozygous polled.

WLN	March 29, 2024	BW: 90 lbs	POLLED	BW	WW	YW	Milk	TM	
58M	HOLLOW 132K JOE 58M			EPDs	+4.4	+63.7	+107.1	+20.5	+52.4
				ACC	0.47	0.39	0.39	0.33	-



LAMPORT'S 33D FORMULA 8F
CC 8F EASY 132K
 CC 32U LYDIA 122Y

J-BAR-B A152 DOUBLE TIME 7D
HOLLOW 7D TAMMY 148K
 HOLLOW 768Z ROSIE 117C

58M is from 132K and a heifer from the 7D bull. 132K is a pretty long, easy calving bull. A good product from a first calf heifer.

WLN	March 30, 2024	BW: 83 lbs	HORNED	BW	WW	YW	Milk	TM
67M	HOLLOW 143J NEW TIME 67M			EPDs +3.2	+47.8	+79.6	+16.7	+40.6
				ACC 0.47	0.38	0.37	0.33	-



J-BAR-B A152 DOUBLE TIME 7D
HOLLOW 7D BIG TIME 143J
HOLLOW P57Y POLLY 109B

HOLLOW 38B BIG JAKE 156F
HOLLOW 156F ALICE 5K
HOLLOW 26X GERI 185C

This horned bull is from a first calf heifer. With an 83 lb birthweight he should be OK to use on heifers. There is a good hair coat on this guy.

WLN	March 30, 2024	BW: 89 lbs	POLLED	BW	WW	YW	Milk	TM
69M	HOLLOW 32K ALISTER 69M			EPDs +3.8	+58.9	+105.7	+28.4	+57.9
				ACC 0.48	0.39	0.39	0.33	-



COPPERTONE 72C GENESIS 8G
CC 8G EASY 32K
CC 1F SARAH 48H

HOLLOW 38B BIG JAKE 143F
HOLLOW 143F MARTHA 152K
HOLLOW 60A KATHY 153E

This good looking bull is from 32K and a first calf heifer. He combines 60A and 143F on the cow side so has a lot of length and depth of body from the maternal side. He's probably OK to use on heifers as well.

WLN	March 30, 2024	BW: 90 lbs	POLLED	BW	WW	YW	Milk	TM
72M	HOLLOW 32K ALISTER 72M			EPDs +3.5	+54.9	+82.6	+22.8	+50.3
				ACC 0.48	0.39	0.39	0.33	-



COPPERTONE 72C GENESIS 8G
CC 8G EASY 32K
CC 1F SARAH 48H

HOLLOW 38B BIG JAKE 143F
HOLLOW 143F MARTHA 22K
HOLLOW C57Y AMY 84B

72M is a sharp looking son of 32K. Notice that 32K has a good number of calves that make the cut – all out of first calf heifers. The maternal side is very strong here as well.

WLN	March 30, 2024	BW: 75 lbs	HOMO POLLED	BW	WW	YW	Milk	TM
73M	HOLLOW 32K ALISTER 73M			EPDs +0.0	+53.9	+84.4	+31.4	+58.4
				ACC 0.47	0.39	0.39	0.33	



COPPERTONE 72C GENESIS 8G
CC 8G EASY 32K
CC 1F SARAH 48H

HOLLOW 868Y STOCKY 289D
HOLLOW 289D NOLA 121K
HOLLOW 5B BRITTANY 93G

This is a soggy, deep bodied son of 32K with a 75 lb birthweight. It's not that often you have both. He should be good for heifers. The dam has another son in the bull pen again this year as well. There is plenty of performance in this line and homozygous polled.

WLN 74M	March 30, 2024	BW: 88 lbs	POLLED						
				HOLLOW 143J NEW TIME 74M					
				EPDs	+3.9	+48.9	+77.7	+20.9	+45.4
				ACC	0.47	0.38	0.37	0.33	-



J-BAR-B A152 DOUBLE TIME 7D
HOLLOW 7D BIG TIME 143J
HOLLOW P57Y POLLY 109B

HOLLOW 38B BIG JAKE 143F
HOLLOW 143F MARTHA 120K
HOLLOW 81B RACHEL 35E

74M is another good bull from a first calf heifer. The cow side combines 81B and 143F so there is plenty of performance in the progeny.

WLN 76M	March 31, 2024	BW: 85 lbs	POLLED						
				HOLLOW 217J LARRY 76M					
				EPDs	+6.5	+52.7	+93.7	+23.3	+49.7
				ACC	0.45	0.37	0.37	0.33	-



HOLLOW 149C SUPERMAN 98G
HOLLOW 98G LUCKY 217J
HOLLOW 76B SARAH 236D

BANNERLANE 153Y SUPER STD 38B
HOLLOW 38B JOSIE 42E
HOLLOW 161X ANDREA 6B

here is a good straight back on this bull and lots of thick, curly hair. The dam combines 161X and 38B so there's lots of performance in his background. His dam is a really good cow with lots of milk and a perfect udder.

WLN 77M	March 31, 2024	BW: 97 lbs	POLLED		BW	WW	YW	Milk	TM
	HOLLOW 10F TIMBER 77M			EPDs	+6.3	+58.1	+89.9	+12.2	+41.3
				ACC	0.49	0.40	0.39	0.35	-



JNHR NEW TIMBER KING 238B
JNHR TIMBER KING 10F
 HOLLOW 868Y STELLA 10B

HOLLOW 161X ANDY 98A
HOLLOW 98A TERRI 157F
 HOLLOW BREANNE 10U

77M is a 10F son with goggle eyes and red all over. He's from a really productive 98A daughter. 10F was a big framed, very athletic bull. There is a lot of potential in this bull.

WLN 82M	April 1, 2024	BW: 87 lbs	HORNED		BW	WW	YW	Milk	TM
	HOLLOW 143J NEW TIME 82M			EPDs	+6.0	+54.7	+94.9	+18.2	+45.6
				ACC	0.47	0.38	0.37	0.33	-



J-BAR-B A152 DOUBLE TIME 7D
HOLLOW 7D BIG TIME 143J
 HOLLOW P57Y POLLY 109B

HOLLOW 98A BTM 100E
HOLLOW 100E KITTY 69K
 HOLLOW 38B JOSIE 17F

Although there's nothing really extreme about this horned bull, he should be a consistent producer. He's another from a first calf heifer who could probably be used on heifers.

WLN 85M	April 1, 2024	BW: 98 lbs	POLLED	BW	WW	YW	Milk	TM	
	HOLLOW 41J COWBOY 85M			EPDs	+4.5	+61.8	+101.6	+21.7	+52.6
				ACC	0.50	0.40	0.41	0.35	-



HOLLOW 5B BRUTUS 146F
HOLLOW 146F CAHILL 41J
HOLLOW 5B BRITTANY 29D

HOLLOW 5B BRUTUS 89D
HOLLOW 89D PEGGY 4F
HOLLOW 180A MARION 24D

There is good length on this bull which is a consistent trait of the progeny of 41J. We also think a lot of the dam, 4F, who is in the top end of the cow herd.

WLN 86M	April 1, 2024	BW: 98 lbs	HOMO POLLED	BW	WW	YW	Milk	TM	
	HOLLOW 81J FRED 86M			EPDs	+6.1	+62.2	+113.5	+26.1	+57.2
				ACC	0.48	0.39	0.39	0.34	-



BAR-RZ 6964 FREEDOM 13F
BAR-RZ 13F KAL 81J
BAR-RZ 56X BRITTANY 85B

BP 23A CRACKER JACK 149C
HOLLOW 149C EMMA 302F
BBSF 23Y RUBY 17A

We are excited about 81J progeny, including 86M. He is adding more docility into his line of cattle. 86M is from a Cracker Jack mom and is homozygous polled.

WLN
94M

April 2, 2024

BW: 90 lbs

POLLED

HOLLOW 14K ROCK 94M

	BW	WW	YW	Milk	TM
EPDs	+5.3	+60.0	+99.2	+20.3	+50.3
ACC	0.48	0.39	0.39	0.35	-



NJW 73S 38W RIMROCK 27C ET
BAR-RZ 27C KC 14K
BAR-RZ 61Y AYDA 66A

HOLLOW 64Z DAN 73C
HOLLOW 73C BROOKE 61E
HOLLOW 208Y JACKIE 167C

This bull is the kind I would like to keep. He has length and depth and frame and hip. There are great cows on the sire side and on the dam's side are 11U and 12R. He should make a great herd sire for someone.



WLN
96M

April 2, 2024 BW: 97 lbs HORNED

HOLLOW 244J GEORGE 96M

	BW	WW	YW	Milk	TM
EPDs	+5.8	+63.1	+102.4	+22.0	+53.6
ACC	0.47	0.37	0.37	0.33	-



BAR-RZ 23B FULTON 3F
HOLLOW 3F FELIX 244J
HOLLOW 89D PEGGY 4F

BANNERLANE 153Y SUPER STD 38B
HOLLOW 38B JOSIE 134F
HOLLOW 161X ANDREA 5B

This is a horned son of 244J. We thought a lot of 3F and wanted to carry on further with his progeny. I say it about most of them but there are great cows behind this bull. We have always said that if you pay attention to the cows, the bulls will follow.

WLN
101M

April 2, 2024 BW: 97 lbs POLLED

HOLLOW 3F FELIX 101M

	BW	WW	YW	Milk	TM
EPDs	+4.6	+53.7	+93.3	+20.7	+47.6
ACC	0.49	0.41	0.41	0.36	-



ANL C HAR T100 TAHOE 86 ET 23B
BAR-RZ 23B FULTON 3F
BAR-RZ 56X BROOKLYN 56B

J-BAR-B A152 DOUBLE TIME 7D
HOLLOW 7D TAMMY 122H
HOLLOW 5B BRITTANY 241F

This is a soggy, deep ribbed, good haired son of 3F. He resembles his sire a lot. There is good performance on this bull. I have great expectations of him.

WLN 104M	April 3, 2024	BW: 99 lbs	HOMO POLLED						
				EPDs	+5.9	+60.0	+92.6	+14.5	+44.5
				ACC	0.49	0.41	0.40	0.35	-

HOLLOW 10F TIMBER 104M



JNHR NEW TIMBER KING 238B
JNHR TIMBER KING 10F
HOLLOW 868Y STELLA 10B

BP 23A CRACKER JACK 149C
HOLLOW 149C EMMA 97F
JNHR TINA 789B

104M is a homozygous son of 10F. Check out his nice, straight back, his depth of rib and hair coat. He's from a Cracker Jack dam and will make a great herd sire.

WLN 106M	April 3, 2024	BW: 95 lbs	POLLED						
				EPDs	+5.1	+63.7	+108.7	+32.0	+63.9
				ACC	0.49	0.41	0.40	0.36	-

HOLLOW 3F FELIX 106M



ANL C HAR T100 TAHOE 86 ET 23B
BAR-RZ 23B FULTON 3F
BAR-RZ 56X BROOKLYN 56B

BBSF 465Y BRUX 5B
HOLLOW 5B BRITTANY 218H
HOLLOW 46B KIRSTY 158E

This is a typical 3F son. He's a soggy, deep ribbed, thick and good haired guy ready to work. From a nice 5B daughter.

WLN	April 3, 2024	BW: 93 lbs	POLLED	BW	WW	YW	Milk	TM	
108M	HOLLOW 14K ROCK 108M			EPDs	+3.9	+54.1	+96.0	+24.4	+51.5
				ACC	0.47	0.39	0.39	0.35	-



NJW 73S 38W RIMROCK 27C ET
BAR-RZ 27C KC 14K
 BAR-RZ 61Y AYDA 66A

RIVERBRIDGE 364X LAD 81B
HOLLOW 81B RACHEL 54H
 HOLLOW 26X GERI 153A

108M is a sharp looking son of 14K. 54H is toward the top end of the cow herd. I have great expectations of this bull and don't see any holes in him.

WLN	April 4, 2024	BW: 96 lbs	POLLED	BW	WW	YW	Milk	TM	
115M	HOLLOW 217J LARRY 115M			EPDs	+5.6	+48.0	+93.0	+28.6	+52.6
				ACC	0.48	0.37	0.37	0.32	-



HOLLOW 149C SUPERMAN 98G
HOLLOW 98G LUCKY 217J
 HOLLOW 76B SARAH 236D

HOLLOW 5B BRUTUS 146F
HOLLOW 146F KATHY 106J
 HOLLOW 180A MARION 71D

This boy carries on the Cracker Jack line. He has a 5B mother who has been very consistent. He should be as well.

WLN	April 4, 2024	BW: 94 lbs	HOMO POLLED	BW	WW	YW	Milk	TM	
122M	HOLLOW 81J FRED 122M			EPDs	+4.9	+55.4	+94.6	+19.8	+47.5
				ACC	0.48	0.39	0.39	0.35	-



BAR-RZ 6964 FREEDOM 13F
 BAR-RZ 13F KAL 81J
 BAR-RZ 56X BRITTANY 85B

JNHR STOCKTON 216Y
 JNHR 216Y MAXINE 239B
 JNHR TINA 772Z

This is another homozygous son of 81J from a grand old Stockton cow. He's really good to work with. 81J has a wonderful line of cows behind him as well.

WLN	April 5, 2024	BW: 95 lbs	HORNED	BW	WW	YW	Milk	TM	
131M	HOLLOW 217J LARRY 131M			EPDs	+4.2	+51.4	+85.5	+33.9	+59.6
				ACC	0.48	0.37	0.37	0.32	-



HOLLOW 149C SUPERMAN 98G
 HOLLOW 98G LUCKY 217J
 HOLLOW 76B SARAH 236D

HOLLOW 5B BRUTUS 146F
 HOLLOW 146F KATHY 218J
 HOLLOW 46B KIRSTY 158E

131M is a real nicely put together son of 217J. The picture captured him pretty well. He's from a 5B daughter with some Stockton mixed in. He'll be a great working bull for someone. Horned bull.

WLN
134M

April 5, 2024 BW: 96 lbs POLLED
HOLLOW 14K ROCK 134M

	BW	WW	YW	Milk	TM
EPDs	+5.3	+52.5	+84.9	+24.6	+50.9
ACC	0.48	0.39	0.38	0.34	-



NJW 73S 38W RIMROCK 27C ET
BAR-RZ 27C KC 14K
BAR-RZ 61Y AYDA 66A

HOLLOW 26X BERT 69C
HOLLOW 69C GLENNIS 160H
HOLLOW 81B RACHEL 248E

This is a 14K son with loads of hair. 14K throws lots of length and performance. I see the old Wabash 62S cow on the dam side. Every one of her calves was right at the top end.

WLN
140M

April 7, 2024 BW: 95 lbs HORNED
HOLLOW 217J LARRY 140M

	BW	WW	YW	Milk	TM
EPDs	+4.6	+50.6	+87.8	+22.2	+47.5
ACC	0.48	0.37	0.37	0.34	-



HOLLOW 149C SUPERMAN 98G
HOLLOW 98G LUCKY 217J
HOLLOW 76B SARAH 236D

BBSF 465Y BRUX 5B
HOLLOW 5B BRITTANY 50E
JNHR TINA 789B

140M is a fancy horned son of 217J from a 5B daughter. I don't think you'd want to change much in the make up of this guy. He's straight through top and bottom with very good depth of body.

WLN	April 7, 2024	BW: 90 lbs	HOMO POLLED	BW	WW	YW	Milk	TM	
146M	HOLLOW81J FRED 146M			EPDs	+4.3	+54.2	+90.9	+19.7	+46.8
				ACC	0.48	0.39	0.39	0.34	-



BAR-RZ 6964 FREEDOM 13F
 BAR-RZ 13F KAL 81J
 BAR-RZ 56X BRITTANY 85B

J-BAR-B A152 DOUBLE TIME 7D
 HOLLOW 7D TAMMY 45J
 HOLLOW 5B BRITTANY 138F

146M is a homozygous son of 81J from a 7D cow. He's good to work with and has a nice hair coat.

WLN	April 8, 2024	BW: 95 lbs	POLLED	BW	WW	YW	Milk	TM
153M	HOLLOW 244J GEORGE 153M			EPDs +4.9	+61.2	+96.5	+21.1	+51.7
				ACC 0.49	0.39	0.39	0.35	



BAR-RZ 23B FULTON 3F
 HOLLOW 3F FELIX 244J
 HOLLOW 89D PEGGY 4F

BBSF 465Y BRUX 5B
 HOLLOW 5B BRITTANY 29D
 HOLLOW C57Y POLLY 23A

A big, long son of 244J and the 29D cow who is on the top end of our cow herd. There is a lot of performance built in here on both sides of his pedigree. He has a nice hair coat as well.

WLN 159M	April 9, 2024	BW: 96 lbs	POLLED	BW	WW	YW	Milk	TM	
	HOLLOW 10F TIMBER 159M			EPDs	+6.7	+66.5	+99.7	+22.1	+55.4
				ACC	0.49	0.39	0.39	0.34	-



JNHR NEW TIMBER KING 238B
JNHR TIMBER KING 10F
HOLLOW 868Y STELLA 10B

BANNERLANE 153Y SUPER STD 38B
HOLLOW 38B JOSIE 23F
HOLLOW 33U BARBIE 108Y

159M has the best performance in the offering at the time of this writing. He has great length and depth of body. He's from the 10F bull and a grand 38B daughter that never misses. If you want to put size and performance in your herd, this boy will do it.

WLN 167M	April 11, 2024	BW: 97 lbs	HORNED	BW	WW	YW	Milk	TM	
	HOLLOW 10F TIMBER 167M			EPDs	+5.9	+61.2	+95.9	+22.8	+53.4
				ACC	0.49	0.41	0.39	0.34	-



JNHR NEW TIMBER KING 238B
JNHR TIMBER KING 10F
HOLLOW 868Y STELLA 10B

BANNERLANE 153Y SUPER STD 38B
HOLLOW 38B JOSIE 17F
HOLLOW 97X KITTIE 88Z

Another son of 10F and a nice 38B daughter, 167M has good length of body and good potential.

WLN April 12, 2024 BW: 95 lbs HORNED
177M **HOLLOW 81J FRED 177M**

	BW	WW	YW	Milk	TM
EPDs	+4.9	+60.3	+96.1	+23.1	+53.3
ACC	0.48	0.39	0.39	0.35	-



BAR-RZ 6964 FREEDOM 13F
BAR-RZ 13F KAL 81J
BAR-RZ 56X BRITTANY 85B

BBSF 465Y BRUX 5B
HOLLOW 5B BRITTANY 82D
HOLLOW 29Y HELGA 85A

This is a horned son of 81J and a 5B daughter. His grandam was from a 42P cow that wouldn't quit. He has a nice hair coat and is good to work with.

WLN April 13, 2024 BW: 93 lbs POLLED
182M **HOLLOW 14K ROCK 182M**

	BW	WW	YW	Milk	TM
EPDs	+4.8	+50.3	+84.0	+20.1	+45.3
ACC	0.47	0.39	0.39	0.34	-



NJW 73S 38W RIMROCK 27C ET
BAR-RZ 27C KC 14K
BAR-RZ 61Y AYDA 66A

BANNERLANE 153Y SUPER STD 38B
HOLLOW 38B JOSIE 141F
HOLLOW 18U MAXINE 19Z

This soggy son of 14K and a high producing 38B daughter has good length and performance.

WLN	April 14, 2024	BW: 85 lbs	POLLED	BW	WW	YW	Milk	TM	
188M	HOLLOW 132K JOE 188M			EPDs	+4.2	+52.6	+88.9	+17.5	+43.8
				ACC	0.48	0.39	0.39	0.33	-



LAMPORT'S 33D FORMULA 8F
CC 8F EASY 132K
CC 32U LYDIA 122Y

HOLLOW 38B BIG JAKE 143F
HOLLOW 143F MARTHA 261K
HOLLOW 81B RACHEL 105E

188M is a sharp looking son of 132K and a 143F first calf heifer. He has nice hair and pretty good length as well.

WLN	April 14, 2024	BW: 95 lbs	HORNED		BW	WW	YW	Milk	TM
189M	HOLLOW 146F CAHILL 189M			EPDs	+4.7	+51.5	+90.5	+21.4	+47.2
				ACC	0.48	0.39	0.39	0.34	-



BBSF 465Y BRUX 5B
HOLLOW 5B BRUTUS 146F
JNHR PEARL 183B

BANNERLANE 153Y SUPER STD 38B
HOLLOW 38B JOSIE 77F
HOLLOW CAROL 102X

189M is a horned son from the 5B line and a 38B daughter that is a high producer. There is good performance in this bull.

WLN	April 15, 2024	BW: 96 lbs	POLLED	BW	WW	YW	Milk	TM	
192M	HOLLOW 81J FRED 192M			EPDs	+6.4	+61.3	+100.3	+13.8	+44.5
				ACC	0.48	0.39	0.40	0.35	-



BAR-RZ 6964 FREEDOM 13F
 BAR-RZ 13F KAL 81J
 BAR-RZ 56X BRITTANY 85B

CC 206P GUNNER 57Y
 HOLLOW 57Y AMY 62C
 HOLLOW 30R SUSIE 43A

This is a heavy boned, long, good haired son of 81J. The dam is a daughter of 57Y who has produced many good cows. The grand dam was from 30R, who was a super big framed bull. This combination should produce steady performance.

WLN 193M	April 15, 2024	BW: 95 lbs	POLLED	BW	WW	YW	Milk	TM	
	HOLLOW 146F CAHILL 193M			EPDs	+3.4	+46.3	+73.7	+26.2	+49.4
				ACC	0.50	0.42	0.41	0.36	-



BBSF 465Y BRUX 5B
 HOLLOW 5B BRUTUS 146F
 JNHR PEARL 183B

JNHR STOCKTON 868Y
 HOLLOW 868Y STELLA 152E
 JNHR PEARL 768B

This sharp looking, well made son of 146F has a great hair coat which is important these days. He's from a good old high producing Stockton cow. The JoNomn cows on the bottom, 768 and 565 were super cows.

WLN 194M	April 6, 2024	BW: 90 lbs	HOMO POLLED	BW	WW	YW	Milk	TM
HOLLOW 81J FRED 194M				EPDs +3.8	+49.5	+79.9	+25.5	+50.3
				ACC 0.48	0.39	0.39	0.34	-



BAR-RZ 6964 FREEDOM 13F
 BAR-RZ 13F KAL 81J
 BAR-RZ 56X BRITTANY 85B

BP 23A CRACKER JACK 149C
HOLLOW 149C EMMA 229H
 HOLLOW 868Y STELLA 156B

194M is a really nice homozygous polled son of 81J who is long bodied with good hair and great performance. He's from a nice Cracker Jack cow. He should make a consistent herd sire for someone.

WLN 205M	April 20, 2024	BW: 95 lbs	POLLED	BW	WW	YW	Milk	TM
HOLLOW 10F TIMBER 205M				EPDs +7.1	+55.5	+95.1	+22.5	+50.3
				ACC 0.50	0.41	0.41	0.36	-



JNHR NEW TIMBER KING 238B
JNHR TIMBER KING 10F
 HOLLOW 868Y STELLA 10B

WINDRUSH 108 STANDARD LAD 1U
HOLLOW 1U DEBBIE 66B
 HOLLOW BERTHA 19X

This bull has it all in my opinion. He's one of the reasons we keep doing this. We'd love to keep him but are encouraged to see what the market will do. 205M is probably the best son of 10F to date from a grand old 1U cow. 1U did a lot for our herd over the years. 205M has length, depth, hip and hair and a good temperament to work with. Have a good look!

WLN	April 24, 2024	BW: 93 lbs	HOMO POLLED	BW	WW	YW	Milk	TM	
217M	HOLLOW 81J FRED 217M			EPDs	+7.2	+64.7	+109.1	+16.0	+48.4
				ACC	0.48	0.39	0.39	0.34	-



BAR-RZ 6964 FREEDOM 13F
BAR-RZ 13F KAL 81J
 BAR-RZ 56X BRITTANY 85B

BP 23A CRACKER JACK 149C
HOLLOW 149C EMMA 281H
 HOLLOW 5B BRITTANY 29D

217M is another homozygous son 81J and a Cracker Jack cow. The granddam is 29D who helps with length, milk and a great udder.

WLN	May 4, 2024	BW: 95 lbs	POLLED	BW	WW	YW	Milk	TM	
228M	HOLLOW41J COWBOY 228M			EPDs	+5.9	+58.1	+89.2	+14.4	+43.5
				ACC	0.49	0.38	0.39	0.34	



HOLLOW 5B BRUTUS 146F
HOLLOW 146F CAHILL 41J
 HOLLOW 5B BRITTANY 29D

HOLLOW C57Y FERD 167D
HOLLOW 167D JANICE 213G
 HOLLOW 98A TERRI 127E

This bull has inherited good length from 41J. The cow side is from the 57Y line with 98A thrown in and the 29D cow on the top so there's lots of maternal strength here. He should raise great cows.

Purebred Bred Heifers

WLN 7M	March 21, 2024	BW: 87 lbs	POLLED	BW	WW	YW	Milk	TM
	HOLLOW 81J FELISHA 7M	EPDs +4.4	+55.2	+94.1	+20.7	+48.3		
		ACC 0.35	0.20	0.20	0.14	-		



BAR-RZ 6964 FREEDOM 13F
BAR-RZ 13F KAL 81J
 BAR-RZ 56X BRITTANY 85B

BBSF 465Y BRUX 5B
HOLLOW 5B BRITTANY 15H
 HOLLOW 868Y STELLA 99C

7M is a nice heifer from 81J and a 5B daughter. She is made well, has a good hair coat and is easy to work with. Polled.

Service to WLN 9M from June 15 to August 20, 2025.

WLN 132K	March 26, 2024	BW: 84 lbs	HORNED	BW	WW	YW	Milk	TM
	HOLLOW 132K JILL 31M	EPDs +4.6	+64.5	+109.5	+20.6	+52.9		
		ACC 0.35	0.21	0.21	0.13	-		



LAMPORT'S 33D FORMULA 8F
CC 8F EASY 132K
 CC 32U LYDIA 122Y

BAR-RZ 32E HOUSTON 17H
HOLLOW 17H HANNA 23K
 HOLLOW 149C EMMA 23G

This good framed heifer with an 84 lb birthweight is from 132K and a 1st calf heifer out of 17H. Horned.

Service to BXC 5M from June 15 to August 20, 2025.

WLN
55M

March 29, 2024 BW: 78 lbs POLLED

HOLLOW 32K ALICE 55M

	BW	WW	YW	Milk	TM
EPDs	+3.4	+57.5	+93.1	+26.4	+55.2
ACC	0.35	0.20	0.19	0.12	-



COPPERTONE 72C GENESIS 8G
CC 8G EASY 32K
CC 1F SARAH 48H

HOLLOW 5B BRUTUS 147E
HOLLOW 147E BUHLA 129K
HOLLOW 167D JANICE 150G

55M is from 32K and a first calf heifer from the 5B line. There should be great potential ub this heifer. Polled.
Service to BXC 5M from June 15 to August 20, 2025.

WLN
68M

March 30, 2024 BW: 94 lbs POLLED

HOLLOW 41J COWGIRL 68M

	BW	WW	YW	Milk	TM
EPDs	+6.4	+55.4	+87.5	+11.7	+39.4
ACC	0.36	0.20	0.20	0.16	-



HOLLOW 5B BRUTUS 146F
HOLLOW 146F CAHILL 41J
HOLLOW 5B BRITTANY 29D

HOLLOW 64Z DAN 73C
HOLLOW 73C BEATRICE 78F
HOLLOW 6Y CARLA 91B

This nice long stylish heifer is from 41J and a nice big daughter of 73C. With 11U cow on the bottom side and 6Y bull, she should be a productive cow. Polled.
Service to WLN 9M from June 15 to August 20, 2025.

WLN 75M	March 31, 2024	BW: 96 lbs	POLLED	BW	WW	YW	Milk	TM	
	HOLLOW 81J FELISHA 75M			EPDs	+7.0	+64.8	+106.0	+22.2	+54.6
				ACC	0.36	0.20	0.20	0.15	-



BAR-RZ 6964 FREEDOM 13F
BAR-RZ 13F KAL 81J
 BAR-RZ 56X BRITTANY 85B

BP 23A CRACKER JACK 149C
HOLLOW 149C EMMA 87H
 JNHR PEARL 771B

*75M is a thick, really quiet heifer from 81J and a Cracker Jack cow. Polled.
 Service to BXC 5M from June 15 to August 20, 2025.*

WLN 112M	April 4, 2024	BW: 93 bs	POLLED		BW	WW	YW	Milk	TM
	HOLLOW 81J FELISHA 112M			EPDs	+5.9	+59.3	+94.6	+21.1	+50.8
				ACC	0.35	0.20	0.20	0.14	



BAR-RZ 6964 FREEDOM 13F
BAR-RZ 13F KAL 81J
 BAR-RZ 56X BRITTANY 85B

HOLLOW 868Y STOCKY 91C
HOLLOW 91C JENNY 270E
 HOLLOW 768Z ROSIE 139C

*A sharp looking heifer from 81J with loads of hair. 270E, the mother, died in the pasture when 112M was about 6 weeks old. She robbed and weaned in pretty good shape. 270E was the thickest cow we had. If I had realized who we were picking she probably wouldn't be in the sale. Should be a great cow! Polled.
 Service to WLN 9M from June 15 to August 20, 2025.*

WLN
174M

April 12, 2024 BW: 93 lbs HORNED
HOLLOW 81J FELISHA 174M

	BW	WW	YW	Milk	TM
EPDs	+5.7	+60.1	+96.5	+23.1	+53.2
ACC	0.36	0.21	0.21	0.14	-



BAR-RZ 6964 FREEDOM 13F
BAR-RZ 13F KAL 81J
BAR-RZ 56X BRITTANY 85B

BP 23A CRACKER JACK 149C
HOLLOW 149C EMMA 44G
HOLLOW 180A MARION 24D

*174M is another nice heifer from 81J and a Cracker Jack cow. 81J's progeny are great to work with. Horned.
Service to BXC 5M from June 15 to August 20, 2025.*



Service Sires

BXC
5M

Reference Sire

March 26, 2024

BW: 68

Adj WW: 621

Adj YW: 1087

CC 28K EASY 5M {DLF HYF IEF MSUDF DBF}

	BW	WW	YW	Milk	TM
EPD	-1.5	+51.5	+88.5	+27.1	+52.9
ACC	0.47	0.42	0.43	0.34	-



SHF DAYBREAK Y02 D287 ET
SHF HORIZON D287 H022 ET
SHF TIME 001A D81

CRITT OPTION 28K

KCF BENNETT IMPACT B451
GHC C5 MISS LEGEND ET 2E
GHC MISS UNIQUE 25Z

BAR-RZ 59T MR BOJANGLES 70B
BAR-RZ 70B DAWSON 47D
BAR-RZ 56X MISS SPARKLE 79Z

CC 47D MELODY 99K

JEN 195T KAP 20X
CC 20X MELODY 4D
CC 25X MELODY 82B

We purchased 5M from Coullee Crest for an outcross sire on our heifers. He is the service sire on some sale heifers.

WLN
9M

Reference Sire

March 21, 2024

BW: 74

HOLLOW 32K ALISTER 9M {DLF HYF IEF MSUDF DBF}

	BW	WW	YW	Milk	TM
EPD	+2.2	+51.1	+81.4	+24.6	+50.2
ACC	0.48	0.39	0.39	0.33	-



NJW 79Z 22Z HEAVY DUTY 72C ET
COPPERTONE 72C GENESIS 8G
COPPERTONE 164X KASHMIR 14Z

CC 8G EASY 32K

CC 3C EASY 1F
CC 1F SARAH 48H
CC 23A SARAH 126F

BAR-RZ 37C EVEREST 32E
BAR-RZ 32E HOUSTON 17H
BAR-RZ 49S LEXI 13X

HOLLOW 17H HANNA 50K

HOLLOW 868Y STOCKY 289D
HOLLOW 289D PAMELLA 256G
HOLLOW 81B RACHEL 248E

We kept 9M to use on heifers because of his low birth weight and we liked the females behind him. He is the service sire on some sale heifers.



Thank You to our 2025 Buyers

Donald Brewitt
Todd Fawcett
Frank Zadunayski
Hillbillie Ranches
Lazy M Bar Ranch **
Larry Weber
Buchwitz Holdings **
Northway Farms Ltd.
Plain Lake Farming Co. **
Kingcott Farms Ltd. **
Dale Guse **
Westbound Ranch Ltd.
Liam Ries
SJC Farms Inc

Glen Lepard
Rodger King
Phil Jarmin
Tony Friemark **
Brad Brenchley **
Lazy M Farms **
Colton Skori **
Bar JJ Ranch Ltd **
Lyle Weber
Buckskin Ranch
Horseshoe Ranching Inc
Fred Brandson
Spur Ranching
Edler Farms

*** denotes volume buyers*

High Selling bulls at our 2025 Sale



Hollow 131H Steve 100L



Hollow 100E Festus 232L

Thank You!



**Crop
Management
Network**

**CASTOR OFFICE
403-882-2490**

www.cropmanagement.com

Coffee and doughnuts courtesy of:



Farm Credit Canada

Helping you find the right equipment solutions

HUBER
AG EQUIPMENT
LTD.



Advantage Feeders, Mineral
Feeders, Jaylor TMR Mixer,
TestiGrip, Mouse Traps, Electric
Cord & Hose Reels, Greasing tools,
Pro-Mount Gate Brackets & more!

www.huberequipment.com



Jaylor Feed Wagon in use at Holloway Farms Ltd



Nutrien
Ag Solutions™

Box 456
36130 Range Road 110 Coronation
5502-49 Ave Castor
Coronation, AB T0C 1C0

Rob Norton
Manager, Castor/Coronation

☎ 780.385.8037
☎ 403.882.4271
☎ 403.578.3302
robert.norton@nutrien.com
nutrienagsolutions.ca

"Your Local Source for Salt and Mineral"

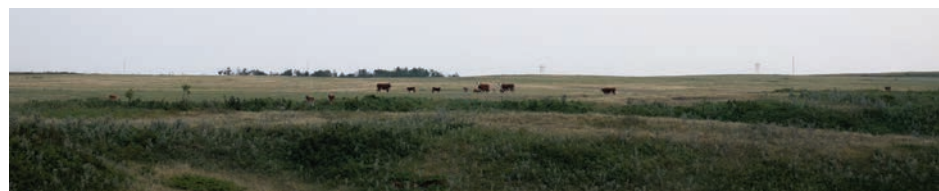
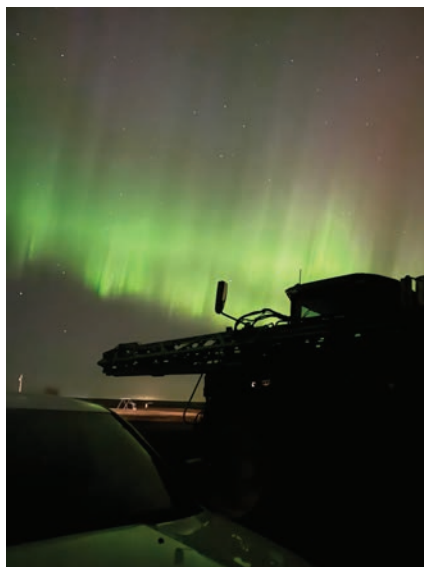
UFA

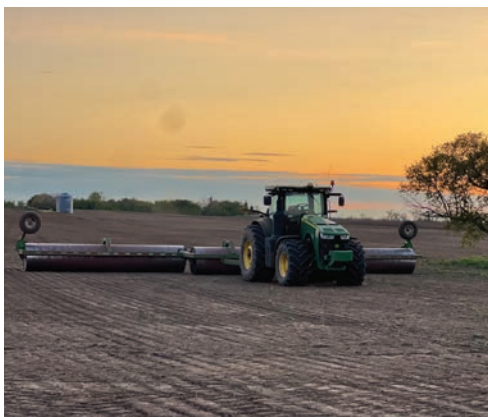
DOUG RUDE

Agent
RMD Petroleum Ltd.

☎ 403.575.0401
🌐 UFA.com

📍 7007A 50 Avenue
Stettler, AB 403.742.2647
📍 5210 50 Avenue
Castor, AB 403.882.3282
📍 4430 Victoria Avenue
Coronation, AB 403.578.3868





HOLLOWAY FARMS LTD.

Box 59

Castor, AB

T0C 0X0

