



Gilchrist Genetics

THE
GENTLEMEN'S
BULL SALE

ONLINE
FEBRUARY 14 & 15, 2026



RYAN & SARA GILCHRIST
Bluffton, Alberta

Welcome to the third edition of the Gentlemen's Bull Sale! We are excited for the continuation of this event! We are also excited to add Nolara Farms bulls to our sale. It seemed fitting for them to join us since we already sell our females together!

We would like to take a moment to thank everyone who has invested in our program over the years, whether it be buying bulls in February or buying heifers in our October sale, we truly appreciate all of you! What a great year 2025 has been! With record market prices in all aspects - feeder, breeding and slaughter cattle. The Agriculture industry is looking bright!

Our program consists of red and black purebred simmentals and a commercial herd of primarily Simmental/Angus base. We artificially inseminate all our cows both purebred and commercial on their first cycle to add genetic diversity to our herd. In our black and black blaze division you will find bulls sired by Hart State of War, Harvie Red Summit, Mader Walk this Way, SVF/NJC Built Right, KWA Slider, SRH Hannibal, and our walking herdsire GG Look This Way 20L. Our red and red blaze division is small but you will find bulls sired by SVS Rancher, Harvie Red Summit and Mader Walk the Line.

All bulls are frame scored, as well as polled and coat colour tested. Results are included under each bull. We have provided explanation of pages 4 and 5 of the polled, coat color and frame score data.

The bulls were weaned September 9th and yearling weights were taken January 3rd, 2026. Please note that the weaning weights and yearling weights posted under each bull are actual weights, not adjusted. The bulls are developed on a cereal silage based TMR ration balanced with the Bullseye Feeds bull supplement. The main focus is the health and development of the bulls over their rate of gain.

All sale bulls will be videoed prior to the sale; the link can be found on our Facebook page, Bohrsen Marketing website or in the DLMS Farmgate listing.

We look forward to visiting with each and every one of you at the Open House! Feel free to call or text us with any questions you may have on the offering or the online bidding process.

-Ryan Et Sara

Ryan: 403•704•3548 • Sara: 780•305•6855 • gilchristgenetics@outlook.com

Open House and Viewing

February 14 & 15 from Noon-5pm

Before Sale Day - Sale bulls will be available for viewing anytime prior to sale day. We encourage customers to come to the farm ahead of sale day so we can give you a more personalized tour through the sale cattle. If you would like to see the sale bulls prior to sale day weekend, please contact us to schedule a viewing.

Open House/Sale Day - Since this is an online only event, there will not be an in-person sale held on-farm, however there will be an open house February 14 & 15 from Noon-5pm. Please contact us if you wish to come outside of open house hours.

Online - If you are unable to view the bulls in-person, you can view the bull videos online instead.

Videos - will be posted on our facebook pages @GilchristGenetics or @NolaraFarms or on the FarmGate Timed Auctions listing page.

Sale Day Phones

Ryan Gilchrist 403-704-3548
Sara Gilchrist 780-305-6855
Larry Van Sickle..... 780-674-7353

Bohrson Marketing Services
Scott Bohrson..... 403-370-3010
Darryl Snider 780-385-5561

Canadian Farm Insurance
Kolton Kasur 780-387-8376

Sale Information

SIGHT UNSEEN PURCHASING

Every year more and more bulls are purchased sight unseen because of the increasing number of repeat buyers and access to videos. If you can't make it to the Open House, give us a call. We know our cattle and are confident that we can recommend bulls that meet your specifications. Then you, the buyer, can get your business done in a very confidential and professional manner. You can also reach out to Scott Bohrson or Darryl Snider of Bohrson Marketing to help you with purchasing a bull.

DELIVERY

Option A: Pick your bull up February 16th and receive \$100 per head off your purchase price

Option B: Free delivery to central points within 300kms of Gilchrist Genetics. If you are unable to receive your bull when we are delivering to your area, the bull must be picked up from Gilchrist Genetics at buyers expense.

Option C: Bulls may be left on the farm free of charge until April 1. A rate of \$5 per head per day will apply after April 1 and bull will then need to be picked up by the buyer at the buyers expense no later than May 1. All bulls staying on farm must be insured.

INSURANCE

Any animal remaining at Gilchrist Genetics after February 16, 2026 must be insured.

HEALTH

All sale animals are fully vaccinated. At birth bulls received Inforce 3 and Calf Guard. At pasture turn out and weaning bulls received Bovishield Gold One Shot, Fermicon 7/ Ultrabac 8, and Ivomectin.

FERTILITY TESTING

All bulls have been under a full herd health program, under the guidance of Bluffton Veterinary Services. All bulls will be fertility tested prior to the sale. Should you have any questions please give us a call.

BREEDERS GUARANTEE

Standard terms set forth by the Canadian Simmental Association, with the exception where any animal is subject to any hormonal or surgical reproduction techniques after the sale, the guarantee shall be null and void.

Online Sale

DLMS
Mark Shologan..... 780-699-5082

See full instructions on page 27.

Access our sale page at
<https://www.farmgatetimeductions.ca/auction/31520>

PHOTOS & VIDEOS

Photos taken by Gilchrist Genetics January 8.

Videos taken by Gilchrist Genetics end of January.



SEMEN RESERVE

Gilchrist Genetics and Nolara Farms reserve the right to collect 100 straws of semen for in herd use only on any bull in our sale. Semen would be collected at the seller's expense and buyer's convenience

TERMS

Every animal sells to the highest bidder, as determined by FarmGate Auctions. Animal purchased becomes responsibility of buyer at the end of the sale. We highly recommend that you purchase insurance. While we will always provide the utmost care of your animal, we are not responsible for any illness, injuries or mortality after the animal is declared sold.

PAYMENT

Payments shall be made by e-transfer or cheque payable to Ryan Gilchrist or Larry Van Sickle (depending on who you bought from) in Canadian Funds at par immediately following the sale. The right of ownership shall not pass until after settlement is made. All settlements must be made before any livestock will be released.

CERTIFICATE OF REGISTRY

After settlement has been made the buyer will be provided with the proper registration papers, duly transferred on the record of the Canadian Simmental Association. Further transfer to the herd books of other countries shall be at the buyers expense.

ACCIDENTS

Although every precaution will be taken to protect the safety and comfort of buyers/bidders/viewers, neither Gilchrist Genetics, Nolara Farms, Bohrson Marketing or FarmGate Auctions assumes any responsibility in the matter and disclaims any liability, legal or otherwise in the event of accident or loss or property.

Frame Score

Frame score is a convenient way of describing the skeletal size of cattle. The Beef Improvement Federation Guidelines (1996) define frame score as follows:

Frame score is a score based on subjective evaluation of height or actual measurement of hip height. This score is related to harvest weights at which cattle should attain a given quality grade or attain a given amount of fat thickness.

Frame score of an animal is determined by mathematical equations that use age and height as variables. No one frame size for an animal will be best for all feed resources, breeding systems, and feed costs. Reproductive efficiency and projected market weight will determine the optimum frame size range within a given set of feed resources, breeding systems, and production costs.

With adequate height growth curves, most animals should maintain the same frame score throughout their life while their actual height increases with age. Frame size can be influenced by nutritional management. Frame score is easily determined if age and height in inches are available see Table 1. Estimates of cattle heights and corresponding frame scores are given for bulls (5 to 21 months). Bull height estimates may be used to approximate steer frame values.

Table 1. Bull Hip Height (inches) Frame Score for Ages 5 to 21 Months.

Age in Months	Frame Score								
	1	2	3	4	5	6	7	8	9
5	33.5	35.5	37.5	39.5	41.6	43.6	45.6	47.7	49.7
6	34.8	36.8	38.8	40.8	42.9	44.9	46.9	48.9	51.0
7	36.0	38.0	40.0	42.1	44.1	46.1	48.1	50.1	52.2
8	37.2	39.2	41.2	43.2	45.2	47.2	49.3	51.3	53.3
9	38.2	40.2	42.3	44.3	46.3	48.3	50.3	52.3	54.3
10	39.2	41.2	43.3	45.3	47.3	49.3	51.3	53.3	55.3
11	40.2	42.2	44.2	46.2	48.2	50.2	52.2	54.2	56.2
12	41.0	43.0	45.0	47.0	49.0	51.0	53.0	55.0	57.0
13	41.8	43.8	45.8	47.8	49.8	51.8	53.8	55.8	57.7
14	42.5	44.5	46.5	48.5	50.4	52.4	54.4	56.4	58.4
15	43.1	45.1	47.1	49.1	51.1	53.0	55.0	57.0	59.0
16	43.6	45.6	47.6	49.6	51.6	53.6	55.6	57.5	59.5
17	44.1	46.1	48.1	50.1	52.0	54.0	56.0	58.0	60.0
18	44.5	46.5	48.5	50.5	52.4	54.4	56.4	58.4	60.3
19	44.9	46.8	48.8	50.8	52.7	54.7	56.7	58.7	60.6
20	45.1	47.1	49.1	51.0	53.0	55.0	56.9	58.9	60.9
21	45.3	47.3	49.2	51.2	53.2	55.1	57.1	59.1	61.0

Frame Score = $-11.548 + 0.4878(Ht) - 0.0289(\text{Days of Age}) + 0.00001947(\text{Days of Age})^2 + 0.0000334(Ht)(\text{Days of Age})$ Equation should only be used for bulls between the ages of 5 and 21 months.

The recommended point for linear measurement of hip height is over the hooks and hip bones (Figure 1). Hip heights should not be used as a replacement for other performance data.

Although no one frame size is best for all producers, hip heights or frame scores do provide supplemental information for the breeder and the buyer.

Hip heights should be measured in inches directly over the hooks (hip bones) with the animal standing on a level surface. To make accurate comparisons, age should be considered when measuring hip height.

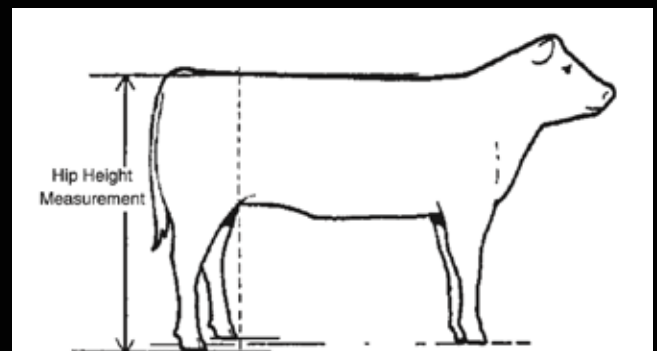


Figure 1. Height Measurement.

The hip height measurement should be taken at a point directly over the hip bones (hocks) with the animal standing on a level surface.

Homo Polled & Coat Colour

All bulls have homo polled and coat colour results specified in this catalogue or will be posted by sale day.

DNA testing was performed to obtain their results.

"Homo" is short for Homozygous ex. Homozygous Polled

"Hetero" is short for Heterozygous ex. Heterozygous Polled

A red animal born out of two black parents will be diluter free

RED CATTLE

A Diluter Carrier carries one dilution gene and one non-dilution gene. Diluter Carriers can pass either gene onto their progeny, therefore some calves may express a diluted coat colour while other calves have a normal coat colour.

If they do pass a dilution gene onto their progeny, a black calf will be diluted to grey and a dark red calf will be diluted to light red.

If they pass on a non-dilution gene onto their progeny, a black calf will be black and a dark red calf will be red.

BLACK CATTLE

Homo Black refers to the animal carrying two copies on the black gene.

Hetero Black means the animal is black in colour, but carries one black gene and one red gene. Black is dominant to red, so the red colour is not expressed when paired with a black gene.

What this means:

BULL	COW	RESULTING CALVES
<i>HOMO POLLED - this bull carries two copies of the polled gene</i>		
Homo Polled	Homo Polled	100% Polled
	Hetero Polled	100% Polled
	Horned	100% Polled
<i>HETERO POLLED - the bull is polled, but carries one polled gene and one horned gene</i>		
Hetero Polled	Homo Polled	100% Polled
	Hetero Polled	75% Polled, 25% Horned
	Horned	50% Polled, 50% Horned
<i>HOMO BLACK - the bull carries two copies of the black gene</i>		
Homo Black	Homo Black	100% Black
	Hetero Black	100% Black
	Red	100% Black
<i>HETERO BLACK - the bull is black in color, but carries one black gene and one red gene. Black is dominant to red, so the red color is not expressed when it is paired with a black gene.</i>		
Hetero Black	Homo Black	100% Black
	Hetero Black	75% Black, 25% Red
	Red	50% Black, 50% Red
<i>RED - the bull carries two copies of the red gene. *This example assumes the bull is diluter free.</i>		
Red	Homo Black	100% Black
	Hetero Black	50% Black, 50% Red
	Red	100% Red

01



Homo Polled • Homo Black

GG NIGHTCRAWLER 24N

WELSH'S WARSAW 312Z
S: HART STATE OF WAR 056C
 HART MISS 102A
 TLSS AVENGER 124Z
D: SKV CIMMARON 33C
 MADER P IRON MAIDEN 15X

FBFS WARSAW 068W
 WELSHS ROSIE 102W
 SKORS BLACK ENTICER 287Y
 HART MISS X534
 TLSS/TLG GRAN TORINO 904W
 TLSS HUSSEY'S PRINCESS10X
 MADER P BLACK IRONMAN 22U
 LFE FAMOUS 632T

RSG 24N • 1519478 • 10 Jan 25

Frame Score: 7.4

Nightcrawler is our lead off black and for good reason! He has that look! 24N is the first of two bulls that resulted from our embryo transfer program. The *Hart State of War* and *SKV Cimmaron 33C "Ronnie"*, cross has worked very well. 24N is the third bull of this mating we've sold, with brothers residing in Quebec and southern Alberta. We sold a daughter of this mating this past fall, which was a very difficult thing to do. She now calls Stout Brothers Simmentals home. *Nightcrawler* is a long-bodied, rugged-made bull with a little more stature. He stands on a solid square foot and strides out very well. *Nightcrawler* is a bull that should add size, power and performance!

BW: 100	Sep9: 990	Jan3: 1445
CE BW	WW YW	MILK MCE MWWT
12.3 1.6	84.5 127.8	21.9 5.8 64.2



Dam: SKV Cimmaron 33C



Full Sister: RSG 16N



Mat Brother: RSG 9M

02



Homo Polled • Hetero Black

GG NOTEWORTHY 58N

KWA FLYF RED MOUNTAIN 16Z
S: HARVIE RED SUMMIT 54B
 HARVIE DAKOTA ROSE 11Z

NCB COBRA 47Y
D: LNS GUSSIED UP 78G
 LNS CALLISTO 52C

IPU RED WESTERN 49X
 KWA MS ROCK 14X
 HARVIE JDF WALLBANGER111X
 WS DAKOTA ROSE M86
 LFE VIPER 455U
 NCB MISS DREAM 22T
 TLSS AVENGER 124Z
 LNS MISS YEARBOOK

RSG 58N • 1519495 • 21 Jan 25

Frame Score: 7.2

Noteworthy has been one of the standouts in our pen from a young age. It helps that he has a picture perfect, eye-catching blaze. A little different twist as he is a black son of *Harvie Red Summit* and out of a *NCB Cobra* daughter. The cow family behind this guy is one we are very fond of - solid producers! His dam just had a full sister to him this calving season, and boy are we excited for her future! *Noteworthy* is a well-balanced, smooth-made bull that carries ample rib and depth of body. Long-spined and structurally sound, he is easy to pick out of the pen.

BW: 100	Sep9: 980	Jan3: 1340
CE BW	WW YW	MILK MCE MWWT
6.9 3.4	89.0 135.3	19.6 4.6 64.1



Sire: Harvie Red Summit 54B



Mat Gr Sire: Cobra

03



Homo Polled • Hetero Black

GMC 67N • 1521139 • 26 Jan 25

Frame Score: 6.0

Notorious is our only direct *Mader Walk this Way* son to sell this year. His mother is a consistent producing, excellent-uddered *Hart State of War* daughter. To say we love the *State of War* progeny would be an understatement. He adds growth and puts a nice solid foot on them! 67N's full brother sold in the first edition of the Gentlemen's Bull Sale to the Crebers at Clearwater Farms. *Notorious* is probably the stoutest made, square-hipped bull in the offering. He follows that up with excellent spring of rib and lower third. He is a meat machine!

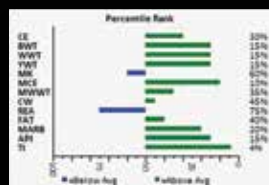
BW: 100 Sep9: 864 Jan3: 1445

CE	BW	WW	YW	MILK	MCE	MWWT
9.7	1.0	88.6	132.4	23.7	7.4	68.0

GG NOTORIOUS 67N

NCB COBRA 47Y
S: MADER WALK THIS WAY 224B
 MADER P IRON SUGAR 7X
 HART STATE OF WAR 056C
D: GMC HAILEY 17H
 GMC EVANGELINE 152E

LFE VIPER 455U
 NCB MISS DREAM 22T
 MADER P BLACK IRONMAN 22U
 LFE FAMOUS 632T
 WELSH'S WARSAW 312Z
 HART MISS 102A
 3C MACHO M450 BZ
 ANGUS/SHORTHORN(BS)



Sire: Mader Walk This Way 224B

04



Homo Polled • Homo Black

SKV 55N • 1519455 • 20 Jan 25

Frame Score: 6.1

Nocturnal is a *KWA Slider* son out of one of only a few *Sand Ranch Hand* daughters we have. This is our first time using *KWA Slider*, resulting in 2 bulls. The second is later in our offering. *Nocturnal* is an intriguing bull to look at as he combines muscle, rib shape and structural soundness. He has strong feet and legs, a good heavy hair coat with an added bonus of a quiet disposition. A bull we like more and more as time goes on. His EPD's suggest he is a heifer bull; however, based on his cow family and his actual 100lbs birthweight we recommend *Nocturnal* be used on mature cows.

BW: 100 Sep9: 842 Jan3: 1265

CE	BW	WW	YW	MILK	MCE	MWWT
14.9	-1.9	74.5	109.6	21.7	7.5	59.0

GG NOCTURNAL 55N

CDI VEGAS 26X
S: KWA SLIDER 196H
 CROWE GOLDIE 3F
 SAND RANCH HAND
D: SKV DELICIOUS IN BLACK 5D
 LNS BLACK WIDOW 466B

HSF HIGH ROLLER 12T
 CDI MS CROCKET 110U
 HART STATE OF WAR 056C
 CROWE GOLDIE 3C
 WHEATLAND BULL 131L
 SAND LUCKY CHARMER
 CMS SEIMENKO 119Y
 D BAR C BLACK MUMBO 137X



Sire: KWA Slider 196H



Pat Brother: Lot 12 SKV 71N

05



Homo Polled • Homo Black

RSG 61N • 1519498 • 22 Jan 25

Frame Score: 5.8

Blaze! *Nobleman* is a SRH *Hannibal* son out of a *Mader Walk This Way* first calver. His dam is a big-bodied, easy-keeping female. *Nobleman* is our first *Hannibal* progeny. After seeing how he developed we will be using a lot more of *Hannibal* in the future. *Nobleman* is a heifer bull candidate that is smooth-made and nice-headed. He doesn't leave it there; he has good muscle shape and depth of body to add to that.

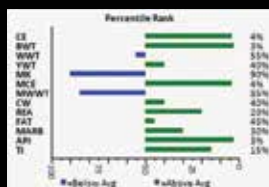
BW: 84		Sep9: 790		Jan3: 1220		
CE	BW	WW	YW	MILK	MCE	MWWT
15.2	-1.0	77.8	117.6	19.6	8.5	58.5

GG NOBLEMAN 61N

REMINGTON LOCK N LOAD 54U
S: SRH *HANNIBAL* 5H
SRH *PRECIOUS* 73A

MADER WALK THIS WAY 224B
D: GG WALK WITH ENVY 26L
LNS ENVY 6H

REMINGTON ON TARGET 2S
BAR 15 MISS KNIGHT 78E-51G
WHEATLAND BULL 786T
OBCC CHYNA C49U
NCB COBRA 47Y
MADER P IRON SUGAR 7X
CIRCLE S LEACHMAN 600U
LNS ENVY 64E



Sire: SRH Hannibal 5H



Mat Gr Sire: MDR 224B

06



Polled • Homo Black

SKV 57N • 1519456 • 21 Jan 25

Frame Score: 5.8

It was a given that one of our bulls would be named *Nikon* with Sara being a photographer so here he is! *Nikon* is a well-balanced bull from front to back with a stylish front end. He is sired by our walking herd sire *GG Look this Way 20L*. *Nikon's* dam is a consistent producer for us, with all 3 sons (including 57N) being sold through this sale. Actually as I'm writing this footnote 45J laid down and spit out a full sister to *Nikon*! Exciting to finally have a female out of this great cow! *Nikon* is thick-haired, deep-bellied, an overall very complete bull, be sure to check him out!

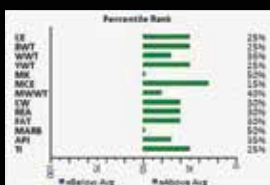
BW: 82		Sep9: 880			Jan3: 1295	
CE	BW	WW	YW	MILK	MCE	MWWT
9.8	2.0	83.2	125.5	25.4	6.5	67.0

GG NIKON 57N

MADER WALK THIS WAY 224B
S: GG *LOOK THIS WAY* 20L
SKV *CANDY'S GIRL* 32G

OLF ODIN U5
D: GG *GOLD JEWEL* 45J
SKV *GIRL IN GOLD* 18G

NCB COBRA 47Y
MADER P IRON SUGAR 7X
JF SIGNATURE 3268A
DOUBLE BAR D *CANDY* 479A
ELLINGSON *LEGACY* M229
OLF *LADY TRIATHLON* S655
W/C *WIDE TRACK* 694Y
LNS *DESTINY'S GOLD* 227A



Sire: SKV Look This Way 20L



Mat Brother: SKV 8L

07



Homo Polled • Hetero Black

SKV 77N • 1519457 • 30 Jan 25

Frame Score: 6.4

Near Dark is the natural calf out of our "Ronnie" donor. The production on this cow has been incredible! We have flushed her every year the past 4 years and she breeds back on first heat every time! *Near Dark* is sired by *Built Right*; a bull that's known to make impressive females! We were hoping for a female on this mating but we tried *Ronnie* again for her 2026 calf, fingers crossed we get a heifer in a week or so. 77N is a fancy-fronted bull with a thin blaze. He is strong through his fore rib and ties nicely into his shoulder. From behind he displays good width of top and ample hip shape. His paternal brother is next, check him out below.

BW: 99		Sep9: 804		Jan3: 1205		
CE	BW	WW	YW	MILK	MCE	MWWT
8.2	3.7	75.2	108.4	18.8	4.2	56.4

GG NEAR DARK 77N

CNS DREAM ON L186
S: SVF/NJC BUILT RIGHT N48
NJC EBONY ANTOINETTE

TLSS AVENGER 124Z
D: SKV CIMMARON 33C
MADER P IRON MAIDEN 15X

NICHOLS LEGACY G151
CNS SHEEZA DREAM K107W
BLACK IRISH KANSAS
NJC BETSY ROSS
TLSS/TLG GRAN TORINO 904W
TLSS HUSSEY'S PRINCESS10X
MADER P BLACK IRONMAN 22U
LFE FAMOUS 632T



GG 77N - Front 3/4 View



Dam: SKV Cimmaron 33C



Mat Brother: SKV 19H

08



Homo Polled • Hetero Black

RSG 44N • 1519493 • 16 Jan 25

Frame Score: 6.5

Another blazed face *Built Right* son, this time out of a *SKV Fade to Black* daughter. The udders and foot quality behind *New Castle* are incredible and a cow family we are extremely proud to have in our operation! What's not to like with greats like *Dream On*, *Stimulus* & *Superior* in his pedigree. *New Castle* is a long-spined bull that is structurally correct. He would be a good fit to use on second calvers. Watch for him on sale day!

BW: 87		Sep9: 834		Jan3: 1180		
CE	BW	WW	YW	MILK	MCE	MWWT
8.5	2.5	71.8	105.7	22.9	4.8	58.8

GG NEW CASTLE 44N

CNS DREAM ON L186
S: SVF/NJC BUILT RIGHT N48
NJC EBONY ANTOINETTE

SKV FADE TO BLACK 21F
D: GG BLACK MICKEY 43L
SKORS BLACK MICKEY 246Z

NICHOLS LEGACY G151
CNS SHEEZA DREAM K107W
BLACK IRISH KANSAS
NJC BETSY ROSS
RF/RUST STIMULUS 610D
BLACKSAND HEARTBEAT 75B
MR NLC SUPERIOR S6018
SKORS BLACK MICKEY 136W



Sire: SVF/NJC Built Right N48



Dam's Udder



Mat GrDam: ETZ 246Z

09



Homo Polled • Homo Black

RSG 23N • 1519477 • 10 Jan 25

Frame Score: 6.1

Next are our 64G sons! *Nation State* is the result of our embryo program. We sold his flush mate sister through our fall Genetic Gems female sale to Broken C Simmentals of Brandon Manitoba! *Nation State* has a wide top and good spring of rib that ties into his front one third well. He's one that has a tendency to catch your eye when you walk in the pen! With a 76 pound birthweight, *Nation State* has potential in a heifer pen depending on the size of your heifers.

BW: 76 Sep9: 884 Jan3: 1270

CE	BW	WW	YW	MILK	MCE	MWWT
13.4	-1.2	73.9	113.6	22.6	9.5	59.6

GG NATION STATE 23N

WELSH'S WARSAW 312Z
S: HART STATE OF WAR 056C
HART MISS 102A

NCB COBRA 47Y
D: SKV GIFTED ELEGANCE 64G
CAJS ELEGANT FORCE W24

FBFS WARSAW 068W
WELSHS ROSIE 102W
SKORS BLACK ENTICER 287Y
HART MISS X534
LFE VIPER 455U
NCB MISS DREAM 22T
SVF STEEL FORCE S701
JM DICE-H25-L24



Dam of Lot 9 & 10:
SKV Gifted Elegance 64G



Full Sister to Lot 9 & 10:
RSG 36N



Full Sister to Lot 9 & 10:
RSG 28M

10



Homo Polled • Homo Black

SKV 70N • 1521137 • 27 Jan 25

Frame Score: 6.5

State News is 64G's natural calf. As stated above this mating just works. The daughters are phenomenal both in the show ring and in production. His full sister, *GG State of Elegance 16K*, is doing great things for the Draves family at Ty-D Livestock! *State News* is a deep chested, smooth shouldered bull. He exhibits a strong level top and good width from hooks to pins.

BW: 90 Sep9: 802 Jan3: 1225

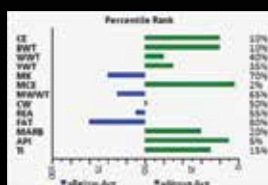
CE	BW	WW	YW	MILK	MCE	MWWT
13.7	0.1	80.5	122.0	22.6	9.2	62.9

GG STATE NEWS 70N

WELSH'S WARSAW 312Z
S: HART STATE OF WAR 056C
HART MISS 102A

NCB COBRA 47Y
D: SKV GIFTED ELEGANCE 64G
CAJS ELEGANT FORCE W24

FBFS WARSAW 068W
WELSHS ROSIE 102W
SKORS BLACK ENTICER 287Y
HART MISS X534
LFE VIPER 455U
NCB MISS DREAM 22T
SVF STEEL FORCE S701
JM DICE-H25-L24



Sire of Lot 9 & 10:
Hart State of War 056C



Full Sister: SKV 16K

11



Homo Polled • Non Dilutor

SKV 45N • 1519452 • 16 Jan 25

Frame Score: 8.0

Good Night is the second bull out of our walking herd sire *GG Look This Way 20L*. He is a little different made than his brother 57N earlier in our offering, but we feel they both follow their mothers phenotype and are good in their own right. *Good Night* is a big-framed, long-spined bull. He is structurally sound made with smooth shoulders and nice skull shape. His dam is a big-bodied, feminine-made cow with a beautiful udder.

BW: 99		Sep9: 916		Jan3: 1320		
CE	BW	WW	YW	MILK	MCE	MWWT
8.5	2.0	77.9	113.8	22.0	5.2	61.0

GG GOOD NIGHT 45N

S: **GG LOOK THIS WAY 20L**
SKV CANDY'S GIRL 32G

SKV ENTOURAGE 26E
D: **GG GOOD KARMA 89K**
SKV GOOD LOVIN' 2G

NCB COBRA 47Y
MADER P IRON SUGAR 7X
JF SIGNATURE 3268A
DOUBLE BAR D CANDY 479A
SS GOLD MINE L42
SKV CIMMARON 33C
WLE UNO MAS X549
SKV ELECTRIC LOVE 40E



Sire: GG Look This Way 20L



Dam's Udder

12



Homo Polled • Homo Black

SKV 71N • 1521135 • 27 Jan 25

Frame Score: 5.9

No Worries is a *KWA Slider* son out of a first calf heifer. Like his father's name suggests, *No Worries* slid into this world at 80 pounds. *No Worries* is a well put together bull that is deep-bodied and smooth-made making him a potential heifer bull candidate. To top that off he has a good heavy hair coat as well.

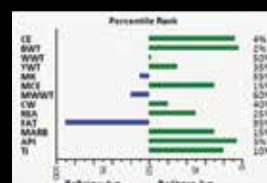
BW: 80		Sep9: 744		Jan3: 1115		
CE	BW	WW	YW	MILK	MCE	MWWT
14.7	-1.1	78.4	119.8	24.5	6.9	63.7

GG NO WORRIES 71N

CDI VEGAS 26X
S: **KWA SLIDER 196H**
CROWE GOLDIE 3F

SKV FADE TO BLACK 21F
D: **GG LADY FORTUNE 97L**
SKVE EDGE OF FAME 8E

HSF HIGH ROLLER 12T
CDI MS CROCKET 110U
HART STATE OF WAR 056C
CROWE GOLDIE 3C
RF/RUST STIMULUS 610D
BLACKSAND HEARTBEAT 75B
LFE BOUNTY 3118Z
LFE BS FORTUNE 628B



Sire: KWA Slider 196H

13



Polled • Non Dilutor

SKV 8N • 1519450 • 04 Jan 25

Frame Score: 5.9

No Rush is a one of two SVS *Rancher* sons we have on offer. He is out of a very productive *Wheatland Circuit Breaker* cow, this being her first bull calf. She has a daughter who sold through our first female sale that now resides at Circle G Simmentals. *No Rush* is a stout-made, heavy-muscled bull that has that herd bull look about him. It should be noted that when we clipped we did find tiny buttons on his poll. Front to back he possesses desirable shape and dimension and structural correctness. To top it all off he is push around quiet hence the name *No Rush*.

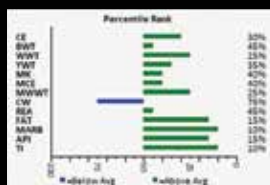
BW: 101		Sep9: 990		Jan3: 1440		
CE	BW	WW	YW	MILK	MCE	MWWT
9.3	2.9	85.1	121.3	27.4	4.7	69.9

GG No Rush 8N

S: SVS TYCOON 841F
S: SVS RANCHER 42H
HLT'S SAMMIE

WHEATLAND CIRCUIT BREAKER
D: SKV DIXIE LULLABY 20D
VIRGINIA MS MAGGIE 51X

SVS BROOKS 669D
SVS RED ANNIE 411B
WS BEEF KING W107
BRANT DONT YA LOVE ME
WHEATLAND HIGHVOLTAGE122Y
WHEATLAND LADY 81X
VIRGINIA RED TEXAS
VIRGINIA MS. NUTMEG 52N

Sire of Lot 15 & 16:
SVS Rancher 42H

Dam: SKV Dixie Lullaby 20D

14



Homo Polled • Non Dilutor

SKV 48N • 1519453 • 16 Jan 25

Frame Score: 5.5

Nasty Habit is our other SVS *Rancher* son out of a consistent producing *Boundary Capone* daughter. We have sold 2 daughters out of 47H in our Genetic Gems female sale; one to Aumack Simmentals and one to Lisa Reich. *Nasty Habit* is a heavy-haired, big-bellied bull that catches your eye. He gets out and moves really well and carries ample muscle shape and a strong top line.

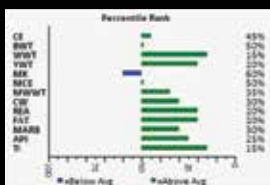
BW: 90		Sep9: 836		Jan3: 1190		
CE	BW	WW	YW	MILK	MCE	MWWT
7.8	3.5	88.8	130.9	23.7	4.2	68.1

GG NASTY HABIT 48N

S: SVS TYCOON 841F
S: SVS RANCHER 42H
HLT'S SAMMIE

BOUNDARY CAPONE 26D
D: SKV CAPONES RUBY 47H
LNS ACES' RUBY 315B

SVS BROOKS 669D
SVS RED ANNIE 411B
WS BEEF KING W107
BRANT DONT YA LOVE ME
MRL CAPONE 130B
BOUNDARY SARAH 62A
WHEATLAND RED ACE 747T
KOP MS ULTIMATE 212Y



Mat Sister: SKV 2K



Mat Sister: SKV 30L

15



Homo Polled • Non Dilutor

RSG 60N • 1519496 • 22 Jan 25

Frame Score: 6.8

Burn Notice is a dark red *Harvie Red Summitt* son. He is a stout-hipped, rugged-made bull. He is a loose-hided, free-moving bull that has a lot of substance to him, with a blazed face to top it all off. He comes from a strong cow family with several full and half sisters in our herd as well as a full sister at Stout Brothers Simmentals. We flushed his dam last spring to make full sibs to this guy! We ran 50/50 on heifers and bulls on the mating that hit the ground this January. His older maternal brother is Lot 16 below!

BW: 100	Sep9: 904	Jan3: 1270
CE BW WW YW MILK MCE MWWT	5.2 4.4 88.5 134.0 20.2 2.9 64.5	

GG BURN NOTICE 60N

KWA FLYF RED MOUNTAIN 16Z
S: **HARVIE RED SUMMIT 54B**
HARVIE DAKOTA ROSE 11Z

TLSS AVENGER 124Z
D: **LNS CALLISTO 52C**
LNS MISS YEARBOOK

IPU RED WESTERN 49X
KWA MS ROCK 14X
HARVIE JDF WALLBANGER111X
WS DAKOTA ROSE M86
TLSS/TLG GRAN TORINO 904W
TLSS HUSSEY'S PRINCESS10X
CROSSROAD SARGENT 143S
4L MS ADVANTAGE 79N



Sire: Harvie Red Summitt 54B



Dam's Udder: Lots 15 & 16



Full Sister: LNS 39J

16



Polled/Scurred • Non Dilutor

RSG 20M • 1476077 • 07 Jan 24

Frame Score: 6.8

Here's a bull that could cover a few extra cows! *Full Monty* is our virgin two year old bull on offer this year. He is sired by *Mader Walk The Line* and out of a very productive *TLSS Avenger* daughter who is now 11 years old, with a solid foot and udder. We actually purchased his dam from Nolara Farms so it's kinda cool that he is going to sell alongside their bulls. *Full Monty* is an impressive powerful bull with expressive hip and muscle shape. A growth and performance bull for sure. Longevity is built into *Full Monty*, mark him high on your list!

BW: 105	Sep9: 870	Jan3: 2300
CE BW WW YW MILK MCE MWWT	4.2 4.3 101.9 147.3 20.7 2.3 71.7	

GG FULL MONTY 20M

MADER WALK THIS WAY 224B
S: **MADER WALK THE LINE 92J**
IRCC DARLIN' 613D

TLSS AVENGER 124Z
D: **LNS CALLISTO 52C**
LNS MISS YEARBOOK

NCB COBRA 47Y
ADER P IRON SUGAR 7X
MR HOC BROKER
DESTINY ODIN SHEA
TLSS/TLG GRAN TORINO 904W
TLSS HUSSEY'S PRINCESS10X
CROSSROAD SARGENT 143S
MS ADVANTAGE 79N



RSG 20M Yearling Photo



Sire: Mader Walk The Line 92J



LARRY & NOLA VAN SICKLE
Mayerthorpe, Alberta

Hello and Welcome to our first consignment with the Gentleman's Bull Sale. 2025 was an outstanding year in the cattle market and we are hoping for another strong year for everyone. Thank-you to all of our previous buyers and bidders in support of our breeding program.

Here at Nolara Farms, we strive to maintain a herd of cows with good temperament, good feet, and strong maternal traits. We currently have 100 purebred and fullblood Simmentals and a commercial herd of 100 Simmental cows. We are excited to bring you this year's offerings! Our bulls are developed at Gilchrist Genetics on silage, hay, and a bull pellet from Bullseye Feeds. All our bulls are frame scored and are coat color tested. Polled bulls were tested for homo-polled traits. There are a variety of genetics on offer and we hope you are able to choose one to fit your needs.

We would like to thank Sara and Ryan for all the work they do to ensure our bulls are looking their best. If you wish to view the bulls in person, please call Sara at 780-305-6855 for a drop in visit. The open house is February 14th and 15th at the Gilchrist Farm near Rimbey. Look for the videos online on DLMS or Nolara Farms Facebook page closer to sale date.

-Larry & Nola

780•786•4341 • Larry: 780•674•7353 • nvansickle@xplornet.com



17



Homo Polled • Non Dilutor

LNS 9N • 1521144 • 02 Jan 25

Frame Score: 6.1

The Nines is our first *Epic* son out of a *Black Gold Lawmaker* daughter. The *Lawmaker* daughters are moderate-framed females with perfect udders and feet. *The Nines* is a well-balanced bull with lots to offer in terms of muscle and rib shape. We called him *The Nines* because he really has it all! A very solid, very complete bull all around. Depending on the size of your heifers he could be a heifer bull, however we recommend trying him on 1st calvers first.

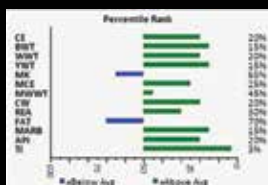
BW: 84	Sep8: 860	Jan3: 1350
CE BW WW YW MILK MCE MWWT		
10.9 0.9 90.3 143.8 23.6 5.8 68.8		

LNS THE NINES 9N

WS ALL ABOARD B80
S: WS **EPIC E152**
WS MAJESTIC Z133

BLACK GOLD LAWMAKER 154G
D: LNS **LANA 44L**
BERWEST DANA 608D

WS ALL-AROUND Z35
S LITTLE SISTER W37
GW RED COAT 099TS
S MOTHER LODGE W21
KWA LAW MAKER 59C
RF CERTAINLY FLIRTIN 532C
NUG HELIX 84B
BERWEST BEV 457B



Sire: WS Epic E152



Pat Sister: LNS 5N

18



Polled • Non Dilutor

LNS 62N • 1521154 • 23 Jan 25

Frame Score: 6.2

Napoleon has that deep body and lots of muscle like his sire *Kuntz Officer*. *Officer* mated with a *SKV Defiance 47D* daughter appears to be a great combination! His dam stems back to *TNT Gunner N208* who made fantastic females! *Napoleon* is an easy one to pick out of the pen as he is impressive from all angles. We were going to keep this guy to use on our second calvers as *Kuntz Officer* hung up his time stamp this summer, but have decided to offer him here! Don't miss out on a great one!

BW: 90	Sep8: 840	Jan3: 1270
CE BW WW YW MILK MCE MWWT		
10.5 1.8 77.1 111.3 29.1 6.4 67.7		

LNS NAPOLEON 62N

KUNTZ MARSHALL 12Y
S: KUNTZ **OFFICER 25F**
PEACOCK'S LI'L NETTIE 23Y

SKV DEFIANCE 47D
D: LNS **YESTERDAY'S JOSIE 43J**
LNS YESTERDAYS CHANCE 13C

BMD RED WALKING TALL 13W
TIMBER WENDY 3W
MUIRHEAD'S KOSMO 27N
MUIRHEAD NETTIE 5W
TLSS AVENGER 124Z
DOUBLE BAR D CANDY 479A
TNT GUNNER N208
LNS GOLDIE HAWN 201A



Sire: Kuntz Officer 25F



Mat Gr Sire: SKV 47D



Pat Sister: LNS 68L

19



Homo Polled • Non Dilutor

LNS 14N • 1521146 • 04 Jan 25

Frame Score: 5.8

Here's another *Epic* son out of a first calving *Summit* daughter. *Nero* is a bull we like more and more as he develops. He is moderate-framed and would be good for first calvers. *Nero* is a big-bellied, soggy-made bull. He is square-hipped and big-nuttied. We really like the *Epic* calves for their ability to come easy and push down the scale in the fall. We have bred our commercial heifers to him for a few years and he is the most consistent. One of the heaviest sire groups we have in the fall, which is pretty impressive off of heifers!

BW: 92		Sep8: 810		Jan3: 1225		
CE	BW	WW	YW	MILK	MCE	MWWT
8.2	1.9	89.6	135.2	20.1	5.5	64.9

LNS NERO 14N

WS ALL ABOARD B80
S: WS **EPIC E152**
 WS MAJESTIC Z133
 HARVIE RED SUMMIT 54B
D: LNS RED CALYTRIX 1L
 LNS CALYTRIX 49C

WS ALL-AROUND Z35
 S LITTLE SISTER W37
 GW RED COAT 099TS
 S MOTHER LODGE W21
 KWA FLYF RED MOUNTAIN 16Z
 HARVIE DAKOTA ROSE 11Z
 TLSS AVENGER 124Z
 MOOSE CREEK TAMMY 17T



Sire: WS Epic E152

Mat Gr Sire Lots 21 & 22:
HAR 54B

20



Homo Polled • Non Dilutor

LNS 55N • 1521151 • 20 Jan 25

Frame Score: 5.2

Here's one for you Oilers fans! *Nuuge* is out of a first calver *Summit* female that did a pretty good job of her first calf. These *Summit* females are proving to be great assets to our herd! This was our first time using *WLB Top Tier*, we've seen quite a few daughters out of him that we quite like and we're hoping for females but ended up with this guy! *Nuuge* is a moderate-framed bull with adequate muscle. He is long-spined and deep-sided.

BW: 88		Sep8: 780		Jan3: 1215		
CE	BW	WW	YW	MILK	MCE	MWWT
12.2	1.2	79.0	107.2	25.4	4.3	64.9

LNS NUUGE 55N

MAR MAC UTAH WHISKY 52E
S: WLB **TOP TIER 456G**
 WLB 47Y FAE 343E
 HARVIE RED SUMMIT 54B
D: LNS RED LISA 39L
 BERWEST ESMERELDA 721E

TNT BOOTLEGGER Z268
 MAR MAC UTAH'S DREAM 79U
 SUNNY VALLEY FORCE 47Y
 WLB 756T TRESSIE 3556B
 KWA FLYF RED MOUNTAIN 16Z
 HARVIE DAKOTA ROSE 11Z
 SKORS CROCKET 252X
 BERWEST VISTA 137Y



Sire: WLB Top Tier 456G



Top Tier Daughter



Top Tier Son

21



Homo Polled • Non Dilutor

LNS 47N • 1521150 • 16 Jan 25

Frame Score: 6.5

Navigator is another son out of *Kuntz Officer*, a bull that we used on our second calvers with good success. *Navigator's* dam is a *Wheatland Circuit Breaker* daughter. We love our *Circuit Breaker* females; solid producers and small, square, clean-uddered. 49H goes back to the *CG Red Dorrie 428P* who always produced great-uddered females. *Navigator* is a smooth-made bull that is structurally correct. If you're looking for a bull to give you fantastic mamma cows, look no further!

BW: 102		Sep8: 860		Jan3: 1325		
CE	BW	WW	YW	MILK	MCE	MWWT
6.1	3.3	79.2	119.8	27.2	3.3	66.8

LNS NAVIGATOR 47N

KUNTZ MARSHALL 12Y
S: KUNTZ OFFICER 25F
PEACOCK'S LI'L NETTIE 23Y

WHEATLAND CIRCUIT BREAKER
D: LNS SWEET HALLE 49H
LNS SWEET CHARIOT 34C

MD RED WALKING TALL 13W
TIMBER WENDY 3W
MUIRHEAD'S KOSMO 27N
MUIRHEAD NETTIE 5W
WHEATLAND HIGHVOLTAGE122Y
WHEATLAND LADY 81X
MR ISHEE RED DENSITY
LNS YELLOW LADY



Sire: Kuntz Officer 25F



Mat Gr Sire: Circuit Breaker

22



Homo Polled • Non Dilutor

LNS 57N • 1521152 • 20 Jan 25

Frame Score: 7.0

Here's is our first *Perks Kong* son on offer! We really need to get a mature photo of *Kong*, he is a tank! *Niko's* dam is an easy keeper with a nice square udder and walks on four good feet. *Niko* takes after his sire with a long body and deep side. *Niko* is a smooth-shouldered, long-sided bull in a bigger-framed package.

BW: 102		Sep8: 860		Jan3: 1325		
CE	BW	WW	YW	MILK	MCE	MWWT
6.1	3.3	79.2	119.8	27.2	3.3	66.8

LNS NIKO 57N

SVS TYCOON 841F
S: PERKS KONG 242K
MADER ANGEL 32G

MR ISHEE RED DENSITY
D: LNS HILARY 58H
LNS ENTITLED MISS 3E

SVS BROOKS 669D
SVS RED ANNIE 411B
LFE HEAVY HITTER 352C
MADER ANGEL BABY 146A
WS BEEF MAKER R13
ISHEE MS BLK SAPPHIRE
TNT GUNNER N208
LNS CALYTRIX 49C



Sire: Perks Kong 242K



Pat Sister: LNS 18M

23



Polled • Non Dilutor

LNS 84N • 1521157 • 04 Feb 25

Frame Score: 5.7

84M is our second son of *Perks Kong* and out of an *Officer* daughter. His momma is a moderate-framed second calver that is easy keeping and has a picture-perfect udder and feet. Her *Epic* son was our heavy weight bull last year! *Nobody's Fool* is parallel in his lines, with a big hip. He is long-bodied, and exhibits a strong, wide top.

BW: 101 Sep8: 800 Jan3: 1175

CE	BW	WW	YW	MILK	MCE	MWWT
1.7	5.3	86.5	119.4	26.4	1.8	69.7

LNS NOBODY'S FOOL 84N

SVS TYCOON 841F
S: PERKS KONG 242K
 MADER ANGEL 32G
 KUNTZ OFFICER 25F
D: LNS YESTERDAY'S KISS 52K
 LNS YESTERDAYS GLOW 56G

SVS BROOKS 669D
 SVS RED ANNIE 411B
 LFE HEAVY HITTER 352C
 MADER ANGEL BABY 146A
 KUNTZ MARSHALL 12Y
 PEACOCK'S LFL NETTIE 23Y
 TNT GUNNER N208
 GRA-TAN TASSY 43D



Sire: Perks Kong 242K



Pat Sister: LNS 38M

24



Polled • Non Dilutor

LNS 4N • 1521142 • 01 Jan 25

Frame Score: 7.5

Nigel is out of *Harvie Red Summit*. We use *Summit* in hopes to get females, but the bulls are also excellent. His momma is a *Skors Crocket* 252K daughter that we purchased from Berwest Farms dispersal. *Nigel* is our heavy weight in the pen this year weighing 1480 pounds on the third of January. *Nigel* is an all round very complete bull that's long-bodied, balanced from front to back and possesses extra frame. All with an added bonus of a blazed face!

BW: 105 Sep8: 930 Jan3: 1480

CE	BW	WW	YW	MILK	MCE	MWWT
4.5	4.4	92.6	149.1	23.8	2.5	70.1

LNS NIGEL 4N

KWA FLYF RED MOUNTAIN 16Z
S: HARVIE RED SUMMIT 54B
 HARVIE DAKOTA ROSE 11Z
 SKORS CROCKET 252X
D: BERWEST ESMERELDA 721E
 BERWEST VISTA 137Y

IPU RED WESTERN 49X
 KWA MS ROCK 14X
 HARVIE JDF WALLBANGER111X
 WS DAKOTA ROSE M86
 LBR CROCKET R81
 SKORS MS FREEBIE 17T
 LAR D BAR C RODEO 87R
 BERWEST TRISHA 123M



Sire: Harvie Red Summit 54B



Summit Daughter

25



Homo Polled • Non Dilutor

LNS 79N • 1521156 • 31 Jan 25

Frame Score: 5.4

Finding *Nemo*! *Nemo* has a great disposition, very quiet and easy to work with! *Nemo* is a deeper-sided, level-topped bull with a smooth shoulder and refined head. He is sired by *Perks Kong* out of a *TNT Gunner* cow, who has a son at *Blum's* and a daughter at *Raymond Chitticks*. We will say it again and again - the *Gunner* females are some of our most productive momma cows!

BW: 90		Sep8: 780		Jan3: 1145		
CE	BW	WW	YW	MILK	MCE	MWWT
7.5	3.2	79.1	105.0	22.5	6.3	62.1

LNS NEMO 79N

SVS TYCOON 841F
S: PERKS KONG 242K
MADER ANGEL 32G

TNT GUNNER N208
D: LNS ENTITLED MISS 3E
LNS CALYTRIX 49C

SVS BROOKS 669D
SVS RED ANNIE 411B
LFE HEAVY HITTER 352C
MADER ANGEL BABY 146A
RC STINGER 072K
TNT MISS HONEY L9
TLSS AVENGER 124Z
MOOSE CREEK TAMMY 17T



Sire: Perks Kong 242K



Mat Brother: LNS 37M



Mat Sister: LNS 52L

26



Polled • Non Dilutor

LNS 58N • 1521153 • 21 Jan 25

Frame Score: 6.4

A little more chrome on this *KSL Pld Jesse James* son, out of *Kuntz HotShot* daughter! *Neutron* has a fullblood smile, and pigmentation on his white face. He was born polled but potentially has scurs developing. 58N is strong through his chest and yet still smooth over his shoulders. We debated keeping *Neutron* for our fullblood first calves but ultimately decided we had enough bull power for the 2026 breeding season.

BW: 86		Sep8: 750		Jan3: 1160		
CE	BW	WW	YW	MILK	MCE	MWWT
10.5	2.2	66.9	95.6	37.2	4.4	70.7

LNS NEUTRON 58N

FGAF GUERRERO 810Y
S: KSL PLD JESSE JAMES 49J
KEET'S GAIA 27G

KUNTZ HOTSHOT 19H
D: LNS TRULY HOT 30L
LNS YOURS TRULY

FGAF SELDOM 835L
NOSSATERRA REAL WISH 69U
ROSEMEAD ON DEMAND 4X
KEET'S APHRODITE 19A
SIBELLE DIRTY HARRY 25Z
KUNTZ MISS MOSES 517C
CROSSROAD SARGENT 143S
PAT'S KATIE



Sire: KSL Pld Jesse James 49J



Pat Gr Sire: Hotshot

27



Homo Polled • Non Dilutor

LNS 18N • 1521148 • 06 Jan 25

Frame Score: 6.2

Nitro Circus is a NGDB Nitro 16A son who is a homo polled, full Fleck bull. His dam is a FGAF Barbossa 707X granddaughter. *Nitro Circus's* dam is easy fleshing with a good foot and a nice udder who cranks out a good one every year! 18N is a soggy-made bull with good over all muscle shape. Short-marked, double-goggled and darker red as well.

BW: 100 Sep8: 840 Jan3: 1305

CE	BW	WW	YW	MILK	MCE	MWWT
6.4	4.6	75.3	111.2	34.7	3.9	72.4

LNS NITRO CIRCUS 18N

SUNNY VALLEY CANON 86E
S: NGDB NITRO 16H
SUNNY VALLEY LADY A 51A

LNS THE EDITOR 1E
D: LNS GISELLE 93G
LNS CHEYENNE 28C

STARWEST POL BLUEPRINT
SUNNY VALLEY TRINITY 53Z
ANCHOR D IMAX 250Y
SUNNY VALLEY HAYLEY 4X
FGAF BARBOSSA 707X
ANCHOR D KEYON 52B
GREAT GUNS MOSES 50D
DFM 467P



Sire: NGDB Nitro 16H



Mat Brother: LNS 49K

28



Polled • Non Dilutor

LNS 23N • 1521149 • 08 Jan 25

Frame Score: 6.1

Deliverance is a Sunny Valley Freedom son out of a Keets Ferrous daughter we purchased from KSL Simmentals. This is the first time we've used *Freedom* and we are excited as the daughters he gave us are pretty phenomenal. We kept every single one of them! *Deliverance's* momma is an easy-fleshing female with a nice udder. *Deliverance* is a deep-bodied bull with good shape to his hind quarter. He has one goggle over his left eye for some extra pigmentation.

BW: 96 Sep8: 820 Jan3: 1205

CE	BW	WW	YW	MILK	MCE	MWWT
8.6	4.0	72.8	100.7	36.7	6.0	73.1

LNS DELIVERANCE 23N

STARWEST POL BLUEPRINT
S: SUNNY VALLEY FREEDOM 22F
SUNNY VALLEY TRINITY 53Z

KEET'S FERROUS 26F
D: KSL KIARA 75K
KSL ANDREA 138G

ANCHOR "T" RUSTY 59G
PHS HOMOZYGOUS XCEPTIONAL
ANCHOR D VIPER 103W
SUNNY VALLEY TRINITY 70T
KEET'S DYNAMIC 20D
XRC DOMINIQUE 19D
LONE STONE ENVOY 143B
BIG SKY ANDREA 6U



Sire: Sunny Valley Freedom 22F



Dam: KSL Kiara 75K

29



Polled/Scurred • Non Dilutor

LNS 15N • 1521147 • 04 Jan 25

Frame Score: 5.1

You guessed it, *New Outlook* is out of *Anchor D Outlook* and a young *STBS McNasty* female. He is a complete made bull with good muscle shape, deep-bodied and nice dark red colour. Double-goggled as an added bonus.

BW: 94		Sep8: 810		Jan3: 1195		
CE	BW	WW	YW	MILK	MCE	MWWT
8.5	2.9	65.4	89.3	33.7	2.7	66.4

LNS NEW OUTLOOK 15N

VIRGINIA PRECISION 16C
S: **ANCHOR D OUTLOOK**
ANCHOR D KAEL 255C

STBS MCNASTY 67G
D: **LNS ELVIRA 67K**
LNS ELVIRA 38E

VIRGINIA RADISON 5Z
BROCK YODA
FGAF BARBOSSA 707X
ANCHOR D RUBY RED 198A
BLACK GOLD ELEVATION 20E
BEE DELORISS 620D
DFM MARCUS 14M
LNS CALYSTA 2C



Sire: Anchor D Outlook



Mat Gr Sire: STBS 67G



Pat Brother: LNS 58K

30



Horned • Non Dilutor

LNS 65N • 1521155 • 25 Jan 25

Frame Score: 5.5

Nitty Gritty is out of our senior herd sire *Kuntz Hotshot* and an easy keeping *Great Guns Hosea* dam. She has good feet and a nice square udder with small teats. *Nitty Gritty* is long-bodied with an extra shot of muscle shape and hind quarter. He also has a little more of the old Simmental markings of red and white broken pattern.

BW: 98		Sep8: 810		Jan3: 1165		
CE	BW	WW	YW	MILK	MCE	MWWT
6.1	4.5	70.4	94.8	37.9	2.9	73.1

LNS NITTY GRITTY 65N

SIBELLE DIRTY HARRY 25Z
S: **KUNTZ HOTSHOT 19H**
KUNTZ MISS MOSES 517C

GREAT GUNS HOSEA 48F
D: **LNS EASY A 20E**
LNS YOUNG GLORY

VIRGINIA WALKER 97W
SIBELLE GOLDA
SOUTHSEVEN MR ADONIS 96Z
KUNTZ MISS MOSES 03X
HASALZ
GREAT GUNS LEAH 23D
CROSSROAD SARGENT 143S
PATS ERMA



Sire: Kuntz Hotshot 19H



Mat Brother: LNS 4K



Pat Sister: LNS 90L

31



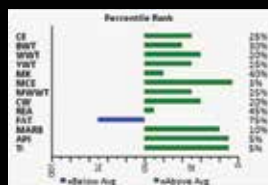
Polled • Homo Black

LNS NIGHT VISION 1N

WELSH'S WARSAW 312Z
S: HART STATE OF WAR 056C
HART MISS 102A

SKV CARBON 14 31C
D: LNS ENVY 64E
LNS XOTIC BEAUTY

FBFS WARSAW 068W
WELSHS ROSIE 102W
KORS BLACK ENTICER 287Y
HART MISS X534
TLSS AVENGER 124Z
D BAR C BLACK MUMBO 137X
MFR RED THUNDER 820U
4L MS EXPERT 63U

Sire of Lots 31 & 32:
Hart State of War 056C

BW: 94		Sep8: 930			Jan3: 1415	
CE	BW	WW	YW	MILK	MCE	MWWT
10.3	2.2	90.0	135.0	27.1	9.0	72.1

32



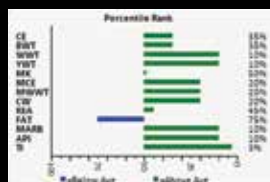
Homo Polled • Hetero Black

LNS NIGHT OWL 8N

WELSH'S WARSAW 312Z
S: HART STATE OF WAR 056C
HART MISS 102A

LLC LEVEL UP 346H
D: KSL KAMARI 45K
KSL LOST 31G

FBFS WARSAW 068W
WELSHS ROSIE 102W
KORS BLACK ENTICER 287Y
HART MISS X534
NGDB STRUCTURE 34D
RF FLIRTIN FOR CERTIN 37U
MLC MR JUSTICE W744
BIG SKY LOST 105U



Dam: KSL Kamari 45K



Mat Gr Sire: LLC 346H

LNS 8N • 1521143 • 02 Jan 25
Frame Score: 7.1

Night Owl is another *State of War* son on offer. He is a larger-framed bull that's long-bodied and level-topped. *Night Owl* also has a smooth shoulder and refined head with a little splash of white on it. He is out of a *LLC Level Up* female that we purchased from KSL Simmentals a few years back. She is easy keeping with a picture-perfect udder and good feet. She is one of our best black females and we are looking forward to seeing more progeny from her in the years to come.

BW: 96		Sep8: 900		Jan3: 1360		
CE	BW	WW	YW	MILK	MCE	MWWT
8.7	2.7	93.9	142.3	25.3	6.2	72.3

33



Homo Polled • Homo Black

LNS 2N • 1521141 • 01 Jan 25

Frame Score: 6.4

Here is our final bull on offer! Night Fall is twin who is also a State of War son. We used State of War on our black females at breeding time in 2024 as we really liked his epds; calving ease, low birth weight yet has growth and performance! We have seen some of the State of War females at Gilchrist Genetics and they are beautiful uddered females with perfect feet! Night Fall's dam is a moderate framed Cowboy Cut female. Lots of body, easy keeping with good feet and udder. Night Fall is a structurally well put together bull with a strong level top and good open rib shape. We think his photo speaks for itself!

BW: 88	Sep8: 860	Jan3: 1280
CE BW WW YW MILK MCE MWWT		
14.9 0.2 79.2 114.8 24.1 9.4 63.7		

LNS NIGHT FALL 2N

WELSH'S WARSAW 312Z
S: HART STATE OF WAR 056C
 HART MISS 102A
 CCR COWBOY CUT 5048Z
D: LNS GUM DROP 17G
 LNS DEW DROP 41D

FBFS WARSAW 068W
 WELSHS ROSIE 102W
 KORS BLACK ENTICER 287Y
 HART MISS X534
 TRIPLE C SINGLETARY S3H
 CCR MS 4045 TIME 7322T
 TLSS AVENGER 124Z
 LNS MISS YEARBOOK



Sire: Hart State of War 056C



Mat Gr sire: Cowboy Cut

Commercial Replacement Heifers

Also a new addition to the Gentlemen's Bull Sale are 3 lots of select commercial heifers from Nolara Farm's commercial herd. These heifers are Simmental sired and out of Simmental X Red Angus cross cows. Born mid January to end of February, 2025.

34

TWO - SOLID RED HEIFERS

Simmental x Angus Cross

35

TWO - RED BLAZED FACE HEIFERS

Simmental x Angus Cross

36

TWO - DARK RED BLAZED FACE HEIFERS

Simmental x Angus Cross

Map to the Gilchrist Farm



Directions

DIRECTIONS FROM RIMBEY

Head North on Highway 20 to Medicine Lake Road (Township Road 432)

Turn left and head West 7 ½ miles.

Yard is on the North side of the road. Small barn style mail box as well as a green barn and white Quonset.



Thank you to our 2025 buyers!

Gilchrist Genetics Buyers:

BULL BUYERS

Lovejoy Cattle Co x 2
Braden Abt
West Country Farms
William Millar *
David Korth
Jace Poffenroth x 2 *
Nathanael Polson
Kidd Bros Inc. *
Porteik Simmentals
Justin Potts x2
Triple MP Farm *

FEMALE BUYERS

Oh Kay Farms
Diamond B Simmentals *
Stout Brothers Simmentals
Broken C Simmentals
PDK Simmentals

Nolara Farms Buyers:

BULL BUYERS

Ross Anderson
Dennis & Dianne Burger *
Larry Bartz
Chelsea Blum
David Ziemmer
Walt Millar *
Larouche Farms Ltd.
Chad Harden
KSL Simmentals *

FEMALE BUYERS

Canadian Donors x 2
Jeremy Abt x 2
Logan Ruszkowski
Blake Laurenceson

* *Repeat Buyer*





Online Sale

DLMS Mark Shologan 780-699-5082

Access our sale page at

<https://www.farmgatetimedauctions.ca/auction/31520>



How to Participate in the DLMS Farm Gate Timed Auction with Extended Bidding

1. Visit dlms.ca and follow the link to the DLMS FarmGate timed auction site www.farmgatetimedauctions.ca, click the LOGIN/REGISTRATION button. First time users will select the REGISTER button from this page. Fill out the registration form to signup for a free user account and it allows you to select a username and password for use on all Farm Gate Timed auctions. This program will send you text and email messages whenever there is activity on your favorite lots or someone challenges your proxy bid and this is why you will be asked for both your current email and cell phone number. If you are a past participant in the Farm Gate Timed auctions simply enter your user name and password to continue. This takes you to a list of both current and upcoming Farm Gate Auctions.
2. You can choose your favourite lots in this sale at this time and the program will allow you to open either all sale lots or just your favorite lots on your screen. Any time there is active bidding on a lot you have identified on your favorite list you will get a text and/or an email noting this activity.
3. The program allows you to place a proxy bid on any sale lot. This in fact protects your interest in any lot of interest for you to a specified dollar value you set, when you may not be able to give 100% attention to the sale. If the lot has a \$2000 bid on it and you place a proxy bid of \$3500 into the system, the computer will bid \$2100 for you but if some one else bids \$2200, the computer will again bid for you, this time at \$2300. The system will look after your interest to a maximum of \$3500. If another bidder is on at \$3600, your proxy will no longer be effective and you will no longer have the winning bid on this lot without once again logging in and bidding again or moving your attention to a second lot of interest.
4. At closing time of the sale the entire sale will extend bidding if a bid is placed on any lot in the sale. Any bid received after close time will extend the sale by the time listed on each sale. In Most cases the time gets shorter the longer in to extended bidding the sale is. When no bidding occurs for the extended time the computer will declare the sale finished.
5. Following the sale the Owner or Sale Manager will invoice all buyers in the sale, please contact the seller with questions or to arrange delivery, pick up or shipping of your purchases.

FAQ:

WHAT IS RACEHORSE STYLE SALE CLOSE? Racehorse style sale close is when the entire sale stays open in extended bidding. This type of sale allows you as the bidder to change to a different lot within the same sale if the bidding has gone in to extended bidding.

HOW WILL EXTENDED BIDDING WORK? When we get to the close out end time the clock for close extends with any bid placed with less than 5 min on the clock. This type of extended bidding turns the end time to more of a soft time. Extended bidding allows bidders to compete in lots like a real auction and give all bidders the same time to make a decision. Always follow the clock to see how much time remains in the sale you are interested in.

Mark Your Calendars!



Gilchrist Genetics

GENETIC GEMS '26

Simmental Female Sale

OCTOBER 18 & 19, 2026

With Guest Consignors



Gilchrist Genetics

RYAN & SARA GILCHRIST

BLUFFTON, ALBERTA

R: 403.704.3548 S: 780.305.6855

GILCHRISTGENETICS@OUTLOOK.COM