

2026



1 PM MST INNISFAIL, AB
February 17, 2026

SALE DAY PHONES

Rodney Hollman 403-588-8620
Cody Congdon 403-350-5791
Darrel Hickman 780-581-4510
Harvey Hollman 403-588-3913
Dale Congdon 403-350-9830
Anthony Murphy 403-505-8233
Billing Inquires
Tanya Hollman 403-352-9283
tanyahollman@hotmail.com

SALE STAFF

Auctioneer

Ryan Dorran 403-507-6483

Ringmen

Craig Flewelling 403-556-0515
Rod McLeod 403-540-7986

INSURANCE

Doreen Flewelling 403-556-5886
flewcc@explornet.com

ACCOMMODATIONS

Innisfail is only 10 minutes away and
Red Deer is 15 with multiple hotel
options. Please contact any of the
consignors if you require help booking
accommodations

ONLINE BIDDING

Online bidding will be available through:
DLMS - www.dlms.ca
Mark Shologn 780-699-5082



TERMS & CONDITIONS

All cattle sell under the standard terms set forth by the Draft Pick sale group breeders. Document available upon request. All bulls returning to breeders places will require insurance.

DELIVERY

Bulls will be Breeding Soundness checked and delivered to central points across western Canada or nearest point of entry throughout March. For any Buyers that want their newly purchased bulls managed at the sellers place beyond April 1st, those arrangements will need to be made at time of purchase. Sellers will offer to feed and manage those bulls until they are required free of charge. The buyer is then responsible for all transportation arrangements and costs.

EXPORT CATTLE

Our team is experienced in exporting cattle and will assist in every step along the way. Ensuring your purchases arrive safely and in a timely manner. All cattle sell with appropriate health and consignors will cover the costs of health papers for all international sales. Delivery of cattle will be to nearest port of entry into the US, buyer is responsible for all transportation costs beyond nearest port of entry.

EXCHANGE RATE

International Buyers exchange rate will be announced from the block prior to the sale in USD for all international sales.

US BUYERS

Currently the strong US dollar is proving a great opportunity to purchase new genetics with a massive savings. Capitalize while you can!!! We sell multiple bulls every year into the US and that helps cut transport costs for everyone.

LIABILITY

The consignors and host facility will assume no legal responsibility for any injury's or hardship that may result by attending the event. All livestock have been handled many time's on foot safely, anyone entering bull pens & facility do so at their own risk.

CATALOG

All information printed is to the best of our ability at time of print. Any errors or updated information will be provided on supplement sheets sale day. All announcements from the block will precede over printed information.

SCHEDULE

FEBRUARY 14TH, 15TH & 16TH

OPEN HOUSE

Viewing Sale Cattle, food & drinks all day!
Show up, tour cattle, enjoy some hospitality!

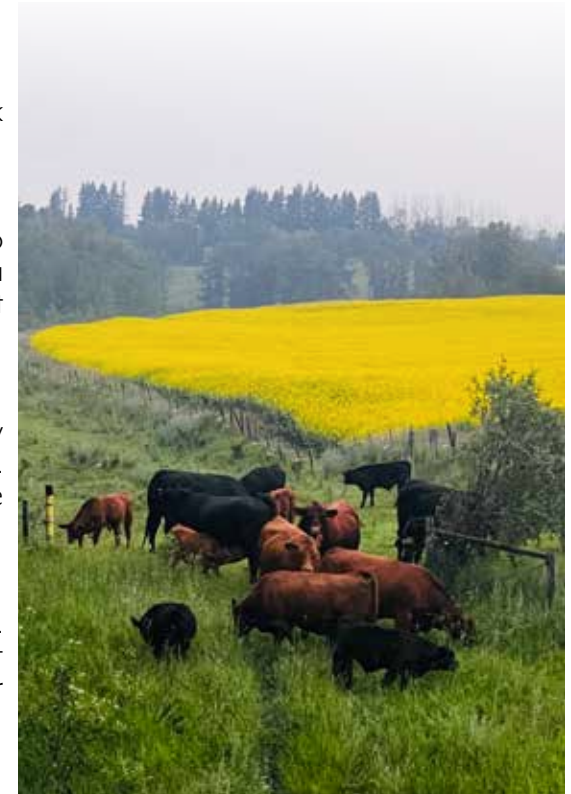
TUESDAY, FEBRUARY 17TH

8AM - Cattle on Display
coffee and doughnuts provided

11.30AM - Steak Lunch & Pie

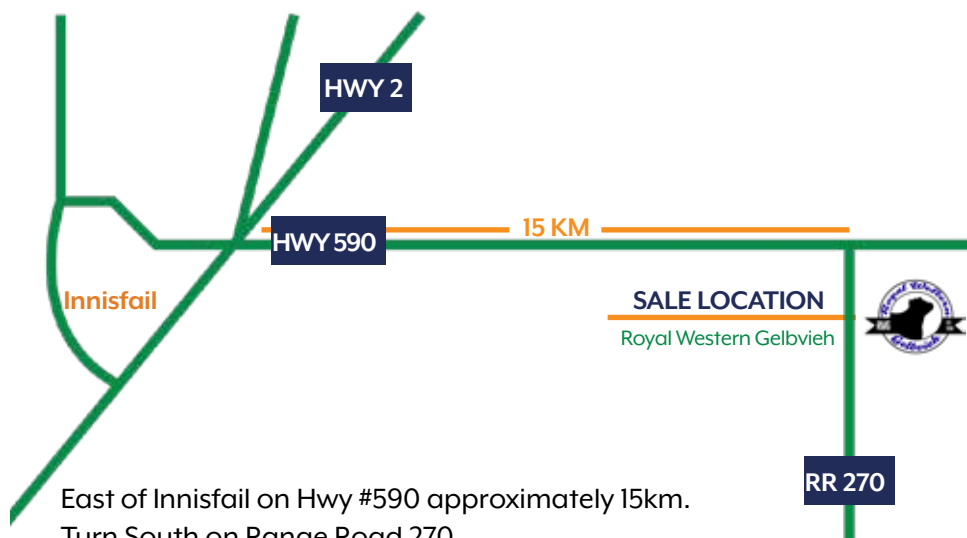
1PM - DRAFT PICKS BULL SALE

Bulls and Commercial Heifers





1 PM MST INNISFAIL, AB
February 17, 2026



East of Innisfail on Hwy #590 approximately 15km.
 Turn South on Range Road 270.
 RWG is the first place on the East side.

The 2026 edition of the Draft Picks Bull sale is the most exciting offering to date, with an expanded breeder profile to offer our customers the best in industry. It's with excitement for the industry that we will once again open the doors to our breeding programs for your appraisal all in one location. With multiple new sire groups, cows family's and outcross ET matings, it will be the most diverse offering with genetics to suite all of industry's needs.

This business is built on the dedication and hard work of exceptional people, across the entire farming and ranching community. As a sale group of families we are excited to see a phase in industry where cow calf producers are being rewarded for the product they take pride in producing. On behalf of Rocky Top Gelbvieh, CDC Farms, Stone Gate Farms, Murphy Cattle Company, 4DJ Farms & Royal Western Gelbvieh we look forward to helping you source the genetics you require to add to your bottom line. We pride ourselves on working as a team to produce the best set of genetics we can. Our breeding programs will bring to you slightly different genetic bases, providing outcross genetics to previous purchases every year. The Draft Picks sale group all passionately believe in consistent multi-trait breeding programs. Bulls will have current performance data and scrotal measurements listed the week of the sale to help with your selections.

The bulls and commercial females once again will be on display over the entire 3-day open house, Feb 14-16th, in big pens that are easy for you to evaluate and see in a natural setting. Come for the food and drinks all day @ the open house, it's the best way to evaluate your next sires, then make your 2026 Draft Picks from an excellent set of bulls.

Mark your Calendars and join us Tuesday Feb 17th for our 7th annual sale. Thank you for your continued support!

Sincerely,

2026 Draft Picks Bull Sale Team

2026 Draft Picks BULL SALE

Herd Health, Quality Assurance, Retained Ownership & EPD Explanation

Disease Prevention - All the individual breeding programs that represent the Draft Picks sale group run extensive, strict herd health programs to help ensure that cattle are born healthy and stay healthy at our operations and are set up for success at yours!

Calves

@Birth - Inforce 3 (IBR,PI3,BRSV) & Toltrazuril- Coccidiosis prevention

@Pasture kick out - ONCE PMH IN (mannheimia & pasteurella), - Express 5 HS (IBR,PI3,BRSV,BVD type 1 & 2 + H-Somnus)

@Weaning- Pyramid 5 + Presponse (IBR,PI3,BRSV,BVD type 1 & 2, mannheimia & Haemolytica)

- Visions 8 Somnus w/SPUR

Sale Bulls - Fusoguard (foot rot & liver abscesses) " 2 shots for all yearlings and 2 yr-olds are boosted" - Express 5 HS & Covexin Plus 8-way

Breeding Females - @ pre-calving Scour Bos 9 & 4 complete program plus Covexin Plus 8-way @ pre breeding Express 5 FP VL5 & Covexin Plus 8-way

Whole Herd - Animals are dewormed and parasite control with utilization of Safe-Guard & Ivermectin pour on with Cylence 25-30 days apart for optimum protection.

Nutrition - Breeding Females: Our cow herds are treated and managed in a tough environment, where they need to be efficient with resources to thrive. We Do Not pamper our cows just because they are seed-stock genetics, they work alongside our commercial females and are asked to thrive on the same resources. Balanced nutrition with proper mineral has always been the driving link to animal welfare and health, we take that part seriously every step of the way.

Bull Development - Bull calves are weaned and transitioned slowly from pasture and momma to high fiber TMR rations, that are balanced for micro and macro nutrients. Rations are formulated to maintain modest growth, but focused on superior rumen health, structure and reproductive health! All long yearling bulls go to summer grass to develop and mature, graze late into the fall, they are fit, in shape and ready to work!

Quality Assurance & Definitions

- DNA Verified and lifetime production records

- Complete herd health standards

- Homo Polled & Coat Color tracking

- Extensive AI & ET Programs

- Sale bulls backed by Industry leading genetics from today's top Sires and Dams

- Large groups of brothers for improved consistency



= Heifers recommended.

RETAINED OWNERSHIP DETAILS

RETAINING 1/2 SEMEN INTEREST - this enables the breeder(seller) to collect semen on the bull at their cost and buyers convenience. Also buyer and seller would be partners in any future semen sales. This is a great way to walk and use some of the top bulls produced and also be able to generate value back in semen sales on certain individuals.

RETAINING 1/2 POSSESSION - this enables the breeder(seller) to use the bull in a natural breeding service capacity. This is common when there is different calving seasons or a back and forth rotation. Please make contact with seller regarding individual requirements for 1/2 possession bulls. Lots of industry's best bulls successfully breed cows at multiple locations for different calving seasons.

Understanding EPD's for added Profitability!

Cattle producers have quickly adopted advanced technology to add profit to their operations. All of the registered sale lots will have full sets of EPD's including genomically enhanced, multi generation to increase accuracy. All of the breeders(sellers) are more than willing to help guide you with the trait and EPD profiles to maximize your operations goals. They are a great tool but remember only one part of the whole equation.

"using only epds is the equivalent to judging a bull by braille"





Rocky Top Gelbvieh is owned and operated by Cody, Melissa Congdon & family. Our operation all began in 2005 with the first purchase of heifer calf Twin Star Rosebud 924R from the Twin Star Cattle Company dispersal sale. To this day, we still have females with the Rosebud lineage along with many of the first main group of females we purchased to grow the herd to where it is today. Here at Rocky Top, we've always strived to meet and exceed customers requirements for genetic advancement in our ever-changing and demanding industry though ensuring we're sourcing the latest bull genetics both through artificial insemination as well as walking bulls. We have also started more work with embryo transfers to further broaden our spectrum in the genetic pool. Melissa and myself would like to thank our buyers and bidders as we know without a strong customer foundation, we could not make this all possible. We look forward to seeing you at our open house and on sale day!

Stonegate Farm is owned by the Hickman Family and has been raising Gelbvieh cattle for 22 years. Darrell, Leila and the kids live East of Sundre and operate a small purebred herd of Gelbvieh and Balancer cattle, with many originating from some of the original cow families imported by Leila's dad to Canada in the early 1970's. We utilize several donors and dominate cow families to produce performance orientated cattle that will help to ensure profitability to the commercial sector. Please feel free to stop by anytime to see the cattle and have a visit, we are always happy to get to know the people behind your operation!



Murphy Cattle Co is owned by Anthony Murphy, a third generation farmer. The goal at Murphy Cattle Co. is to breed sound, easy fleshing, fertile functional Black Angus cattle through artificial insemination and select herd sires. At a young age Anthony was involved in the seed stock industry helping breeders throughout shows and sales, and in the fall of 2016 purchased his first purebred Black Angus from Diamond T Cattle Co. The following fall was a big step into the breed, as 20 head was purchased from Doug Henderson, with many of the females still having a strong Henderson influence in the herds' pedigrees today. The building success of this operation is from the support of family and building the next generation. Looking forward to seeing you at the open house and sale day!

4DJ Farms Ltd. bought their first cow in 1980 and have focused on functional, productive beef animals. Throughout all the years the numbers have changed, trends have changed, but the functional, productive cattle have always been profitable. Strong maternal genetics that will work in any program.

Harvey and Joy Hollman are proud to work with their son, family & friends to host a bull sale that we're all proud of. Looking forward to seeing you at the open house, sale day and beyond.



Rodney & Tanya Hollman along with our boys, Wacey, Keston & Chayse, own & operate Royal Western Gelbvieh & Real World Genetics.

Started raising seedstock gelbvieh cattle in 1998 and have slowly expanded the breeding program to utilize Balancer, Angus & Simmental genetics. We run approx 250 breeding females both seed stock and commercial. We market and sell genetics globally, use extensive ET & AI programs combined with elite sires to push our breeding program forward.

Reference Sires



RWG Keg Party K429

RWG K429 - 04/13/2022 - CDGV179459 - Polled - PB88 - Black

CED	BW	WW	YW	Milk	TM	CEM	STAY	DOC
5	1.8	83	124	25	66	5	13	10

Act. BW 97

Adj. WW 764

Adj. YW 1260

SIRE SLC OUTBACK 142X
RWG HORSE POWER H311
RWG ALLSTAR D510

DAM JRI SANTIAGO 37C31
RWG KITTY F414
RWG KITTY D525

CES DECKA OUTBACK 755
SFL SLC SUE 325P
RWG WAR ADMIRAL 2528
PHG ALLSTAR A71

JRI TOP PRODUCER 282Z3
JRI MS BLACK IMPULSE 37Z3
BEAS 2806Z
RWG KITTY 4512

YG	CW	REA	MARB	FAT
0.07	57.00	0.51	0.220	0.010



JRI Wheres The Beef 307H40

JRI 307H40 - 08/11/2020 - AMGV1497141 - Polled - PC88 - Red

CED	BW	WW	YW	Milk	TM	CEM	STAY	DOC
8	1.6	86	134	27	70	0	7	14

Act. BW 89

Adj. WW 812

Adj. YW 1287

SIRE JRI POP A TOP 197T83
JRI GENERAL PATTON 213B97 ET
JRI MS EXTRAVAGANT 213T87

DAM JRI OPTIMIZER 148A24
JRI MS ONE DERFUL 307D30
JRI MS RUBY 307Y40

JRI TOP SECRET 253M75 ET
JRI MS RED DAWN 197R72
JRI EXTRA EXPOSURE 285L71 ET
JRI MS PENNY ANTE 213R77

SITZ DASH 10277
JRI MS BELLA 148Y44
JRI TOP RECRUIT 254U82
JRI MS HONEYSUCKLE 307U30

YG	CW	REA	MARB	FAT
-0.11	55.0	0.61	-0.050	-0.40



RWG Joy Ride J510

RWG J510 - 05/04/2021 - CDGV177377 - Polled - PB94 - Red

CED	BW	WW	YW	Milk	TM	CEM	STAY	DOC
12	-0.1	67	98	18	52	5	15	10

Act. BW 92

Adj. WW 682

Adj. YW 1228

SIRE JRI SECRET SENSATION 140A43
JRI SECRETARIAT 285E78
JRI MS PRIME STAR 285Z68

DAM JRI SANTIAGO 37C31
RWG GOODNIGHT E417
RWG GOODNIGHT C402

JRI SECRET INSTINCT 254U83
JRI MAXXED OUT 140W32
JRI POP A TOP 197T83
JRI PLD NEW ELEAGANCE 285G67

JRI TOP PRODUCER 282Z3
JRI MS BLACK IMPULSE 37Z3
RWG SLEEP EZ 2517
RWG GOODNIGHT 3604

YG	CW	REA	MARB	FAT
-0.05	25.00	0.35	0.240	0.000



RWG *Grand Plan* G420 ET

RWG G420 - 04/06/2019 - CDGVI70351 - Polled - PB94 - Black

CED	BW	WW	YW	Milk	TM	CEM	STAY	DOC
14	-2.1	69	94	25	59	8	16	12

Act. BW **83**

Adj. WW **871**

Adj. YW **1301**

SIRE RWG RIGHT COMBINATION C506
RWG EXACT COMBINATION E409
 RWG HADIE 3505

RWG WAR ADMIRAL 2528
 SLC LORA 164Y
 RWG XTREME TRACTION 0521
 RWG YES HADIE 1508

DAM BEAS 2806Z
RWG KITTY'S DREAM D526
 RWG ROXY KITTY X 0301

MCFG 94X
 BEAS 7084T
 RWG TOTALLY-EXPOSED 7918 ET
 RWG ROXY KITTY 5030

YG	CW	REA	MARB	FAT
0.03	39.00	0.43	0.120	0.020



DMS *Stuckys Kansas Red*

DMS 12ZK - 09/06/2022 - AMGVI548244 - Polled - PC75 - Red

CED	BW	WW	YW	Milk	TM	CEM	STAY	DOC
9	0.4	81	130	24	64	5	12	15

Act. BW **80**

Adj. WW **632**

Adj. YW **1205**

SIRE FHG FLYING H MR EFFECT 40A
FHG FLYING H 80A/40A 79E ET
 FHG FLYING H MS SANDMAN 80A

AAA SCHIEFELBEIN EFFECTIVE 61
 MCFG 130X ET
 CTR SANDMAN 6523S
 FHG FLYING H 41P 206T

DAM BTI GRANITE 2135M
DMS STUCKYS AD ASTRA ET
 DCSF POST ROCK LAURA 169L2 ET

BTI EXTRA 2106K ET
 BTI ELECTRA B 2001H
 MRCO NEW DIRECTION 905J
 DMF 777C

YG	CW	REA	MARB	FAT
-0.16	51.00	0.81	0.190	-0.030



RWG *Kash Flow* K444

RWG K444 - 04/17/2022 - CDGVI79458 - Polled - PB94 - Red

CED	BW	WW	YW	Milk	TM	CEM	STAY	DOC
9	1.9	74	121	19	56	6	14	11

Act. BW **93**

Adj. WW **780**

Adj. YW **1314**

SIRE SLC OUTBACK 142X
RWG HORSE POWER H311
 RWG ALLSTAR D510

CES DECKA OUTBACK 75S
 SFL SLC SUE 325P
 RWG WAR ADMIRAL 2528
 PHG ALLSTAR A71

DAM RWG RIGHT COMBINATION C506
RWG DAISY E447
 RWG DAISY XPRESS 2401

RWG WAR ADMIRAL 2528
 SLC LORA 164Y
 COLB MR XAVIER X812
 RWG DAISY XPRESS 0539

YG	CW	REA	MARB	FAT
-0.03	51.00	0.60	0.24	-0.010





RWG *Just To Cool* J416 ET

RWG J416 - 04/09/2021 - CDGV177270 - Homo Polled - PB94 - Red

CED	BW	WW	YW	Milk	TM	CEM	STAY	DOC
6	1.4	72	105	23	58	2	13	15

Act. BW 97

Adj. WW 918

Adj. YW 1422

SIRE SLC MASTERPLAN 111Y
HL SLC MASTERPLAN 58C
HL MISS RAYNA 111T

DAM VV ZAKE 114Z
SLC PARKLAND 31E ET
SLC PARKLAND 220U

SLC MASTERPLAN 191U
SLC SMOKE 20U
ARN SIR ARNOLD K114
TSCC TWIN STAR RAYNA 313R

FRL FIR RIVER RANALDO 38U
SLC DEBBIE 209S
SLC MERV 12N
SLC COPPER PARKLAND 139G

YG	CW	REA	MARB	FAT
-0.07	48.00	0.63	0.270	-0.010



SOO LINE *Motive* 9016

SOO 16W - 07/01/2009 - 1504907 - Polled - Angus - Black

CED	BW	WW	YW	Milk	TM	CEM	STAY	DOC
5.0	0.3	46	83	21		-1.0		15

Act. BW 71

Adj. WW 781

Adj. YW 1354

SIRE SANDY BAR ADVANTAGE 43M
HF KODIAK 5R
WILBAR RUBY 955N

DAM RR 7407 RAINMAKER 2154
TLA BEAUTY 5R
TERRLENE BEAUTY 35F

TC ADVANTAGE
SANDY BAR JEMINA 44K
VERMILION YELLOWSTONE
WILBAR RUBY

A A R RAINMAKER 7407
H A CONCEPCIONA 0224
TERRLENE EXECUTIVE PRIDE 10D
KBJ BEAUTY 257B

YG	CW	REA	MARB	FAT
	32	0.64	0.21	0.042



GHGF *Krank* K21

GHGF K21 - 10/19/2022 - AMGV1576042 - Polled - BA75 - Homo Black

CED	BW	WW	YW	Milk	TM	CEM	STAY	DOC
14	-2.9	56	77	20	48	8	17	10

Act. BW 85

Adj. WW 728

Adj. YW 1207

SIRE JOB DANELL TD CHICO LOCO 28Y
EGL ENCORE E7166
GRU MS ASTRO 298Z

DAM GHGF ZEUS 61Z
EGL DEANNA F201
GHGF DEANNA 77D

ELK CK CRAZY HORSE 138P
MCFG TD MYA 210T
JDPD ASTRO 407S
GRU MS WHOOPTEE 955W

EAGLE PASS PRIME STOCK 9002
AMT FANCY 61R
FMGF BLUE'S IMPACT 001X
JBOB 5277P

YG	CW	REA	MARB	FAT
-0.24	6.00	0.41	0.280	-0.040



SIRE



GRANDSIRE

RTG Ho Party N249

RTG N249 - 02/06/2025 - CDGV191741 - Homo Polled - PB94 - Black

CED	BW	WW	YW	Milk	TM	CEM	STAY	DOC
5	2.4	80	124	26	66	4	16	11

SIRE RWG HORSE POWER H311
RWG KEG PARTY K429
RWG KITTY F414

DAM JRI GUNG HO 282C51
RTG DAISY 2210
RTG DAISY H113

YG	CW	REA	MARB	FAT
0.05	41.00	0.35	0.020	0.010

SLC OUTBACK 142X
RWG ALLSTAR D510
JRI SANTIAGO 37C31
RWG KITTY D525

JRI HOSS 293A43 ET
JRI MS FRANKIE 282R11
RWG EXACT COMBINATION E409
RWG DAISY 9142

Act. BW **85**

Adj. WW **805**

Adj. YW **1302**

RTG Ho Party is a standout, highly functional Keg Party son that is packed with hair and offers a well-balanced, eye-catching build. He is clean through the skull and neck, flowing smoothly into a correct front end and chest, and carries a wide rib with added depth and capacity. From above, RTG Ho Party is broad-based and square-hipped, showing the kind of shape and width that translate into practical performance. He stands on excellent feet with correct angles and sound structure, and is backed by the proven Daisy cow family, well known for its maternal strength and longevity. This is a bull you can confidently use to sire quality replacement females that will remain productive in the herd.



RTG Nasty Party N117

RTG N117 - 01/18/2025 - CDGV191476 - Homo Polled - PB94 - Black

CED	BW	WW	YW	Milk	TM	CEM	STAY	DOC
3	3.8	82	122	26	67	6	9	10

Act. BW 83

Adj. WW 700

Adj. YW 1218

SIRE RWG HORSE POWER H311
RWG KEG PARTY K429
RWG KITTY F414

DAM RWG GUT FEELING G429
RTG AMY 2108
RTG AMY A587

SLC OUTBACK 142X
RWG ALLSTAR D510
JRI SANTIAGO 37C31
RWG KITTY D525

RWG EXACT COMBINATION E409
RWG ROXY KITTY X 0301
LCR WARNOCK 612W
VG VALLEY MISS BJ 325

YG	CW	REA	MARB	FAT
-0.13	67.00	0.84	-0.030	-0.040



DAM



SIRE

RTG Nasty Party offers a lot and is truly the real deal. He represents a complete performance package, combining a clean, soft, and elegant front-end profile with a strong topline, added rib and capacity, and impressive rear muscle shape. This mating brings together the kind of power, depth, hair, and added growth that today's industry demands. His dam, RTG Amy, continues to raise the bar and earned her place in our donor pen this past spring due to her consistent production and quality. With solid performance numbers and a high-quality pedigree, RTG Nasty Party carries strong potential for use in a progressive seedstock operation.



RTG After Party N110

RTG N110 - 01/16/2025 - CDGV191472 - Polled - PB94 - Homo Black

CED	BW	WW	YW	Milk	TM	CEM	STAY	DOC
4	3.2	85	121	26	68	2	16	10

Act. BW 106

Adj. WW 722

Adj. YW 1326

SIRE RWG HORSE POWER H311
RWG KEG PARTY K429
RWG KITTY F414

DAM DDN 129B
RTG MISS
VG VALLEY MISS BJ 325

SLC OUTBACK 142X
RWG ALLSTAR D510
JRI SANTIAGO 37C31
RWG KITTY D525

STON XPLOSIVE 5X
DDN BELLY RIVER WINDY 924W
VG VALLEY BLACKJACK JR 37H
VG VALLEY PLD VIOLA 63K

YG	CW	REA	MARB	FAT
0.01	50.00	0.48	0.210	0.000



GRAND SIRE

RTG After Party is a homozygous black, heterozygous polled power bull backed by strong growth- and performance-oriented pedigrees that are built to add pounds and improve end-goal profitability. He is big topped, long spined, square built, and burly, offering the kind of muscle and mass that stands out in a commercial setting. RTG After Party is the type of bull that can move the needle forward in a progressive, performance-driven program, ranking Top 2% for WW and Top 5% for YW.



RTG Nu Merica N105

RTG N105 - 01/10/2025 - CDGV191469 - Homo Polled - PB94 - Black

CED	BW	WW	YW	Milk	TM	CEM	STAY	DOC
10	0.5	86	128	21	64	6	17	13

SIRE DLW TPG FRONTRUNNER 2510F
JKGF ALL AMERICAN J109
JKGF F109 ET

DAM DDN DRIVER 133D
DDN 04H
DDN 88B

YG	CW	REA	MARB	FAT
-0.22	46.00	0.89	0.440	-0.030

DLW TPG JACKPOT 7551B ET
DLW MS WARDON 2510Z ET
CCRO CAROLINA LEVERAGE 3214A
JKGF HATTIE B C106 ET

JRI PETERBILT 282B31 ET
DDN 16A
STON XPLOSIVE 5X
DDN BELLY RIVER X-GIRL 103X

Act. BW 80

Adj. WW 791

Adj. YW 1136

RTG Nu Merica is a solid-made, thick-topped, deep-ribbed, wide-hipped bull built to deliver serious growth and performance. If you're in the market for a true beef machine, this is the kind that checks every box. His dam, DDN 04H, has been exceptionally consistent in our program, producing progeny that are solid, powerful, and always rise to the top of the pen. She earned Dam of Merit status this year and continues to raise the bar with a strong set of EPDs. RTG Nu Merica ranks Top 2% for WW and YW EPDs, posting an 863 lb weaning weight (111 ratio) and a 1,136 lb yearling weight (96 ratio). This bull offers the growth, power, and genetic reliability to make a real impact in a progressive commercial or seedstock program.



RTG Ned N134

RTG N134 - 01/26/2025 - CDGV191726 - Homo Polled - PB88 - Homo Black

CED	BW	WW	YW	Milk	TM	CEM	STAY	DOC
14	-1.4	55	82	21	49	7	18	8

Act. BW 77

Adj. WW 696

Adj. YW 1199

SIRE EGL ENCORE E7166
GHGF KRANK K21
EGL DEANNA F201

DAM RWG GUT FEELING G429
RTG WOODLAND L120
RTG GRACE

JOB DANELL TD CHICO LOCO 28Y
GRU MS ASTRO 298Z
GHGF ZEUS 61Z
GHGF DEANNA 77D

RWG EXACT COMBINATION E409
RWG ROXY KITTY X 0301
RTG DOMINION
RWG WOODLAND 9143



SIRE

YG	CW	REA	MARB	FAT
-0.19	23.00	0.62	0.360	-0.020

RTG Ned is a prime example of the consistency we continue to see from GHGF Krank K21 sons. When calving first-time heifers and looking to make the job easy, this bull presents a real opportunity. GHGF Krank K21 was put to the test in the spring and summer of 2024, breeding over 60 heifers with a very good outcome of, vigorous calves—results we are extremely pleased with. RTG North 49 is backed by a productive, dependable pedigree where growth and maternal strength work together, making him a solid option for producers focused on retaining replacement females that will stay productive and functional in a modern program.



RTG Nugget N124

RTG N124 - 01/21/2025 - CDGV191716 - Homo Polled - PB94 - Black

CED	BW	WW	YW	Milk	TM	CEM	STAY	DOC
4	1.0	67	98	28	62	5	15	11

Act. BW 83

Adj. WW 741

Adj. YW 1170

SIRE RWG HORSE POWER H311
RWG KEG PARTY K429
RWG KITTY F414

DAM DDGR RESILIENT 275D
RTG HARD CRUSH
RTG GIRL CRUSH

SLC OUTBACK 142X
RWG ALLSTAR D510
JRI SANTIAGO 37C31
RWG KITTY D525

CCRO CAROLINA LEVERAGE 3214A
DDGR 129Z
RPS APOLLO 75A
VG VALLEY MISS BJ 32S



SIRE

YG	CW	REA	MARB	FAT
-0.22	47.00	0.77	0.080	-0.050

RTG Nugget is a strong, long, bull packed full of meat and potatoes. This solid Keg Party son is very clean through the skull and front third, long spined, wide based, and carries a tremendous amount of rear-quarter shape. His dam, RTG Hard Crush, comes from a rugged, performance-driven cow line, with DDGR Resilient 275D on the top side—genetics that have consistently added growth, length, and muscle to our program. RTG Nugget represents a top-end performance package that will bring pounds and value to the feedyard through high-quality, growth-oriented steers.



RTG North 49 N138

RTG N138 - 01/29/2025 - CDGVI91730 - Homo Polled - PB88 - Black

CED	BW	WW	YW	Milk	TM	CEM	STAY	DOC
17	-1.5	59	84	19	48	6	18	11

SIRE EGL ENCORE E7166
GHGF KRANK K21
EGL DEANNA F201

DAM JRI SECRETARIAT 285E78
RTG WISH L133
RTG CERVEZA

JOB DANELL TD CHICO LOCO 28Y
GRU MS ASTRO 298Z
GHGF ZEUS 61Z
GHGF DEANNA 77D

JRI SECRET SENSATION 140A43
JRI MS PRIME STAR 285Z68
RPS APOLLO 75A
RWG WISH 9124

Act. BW 84

Adj. WW 753

Adj. YW 1231

YG	CW	REA	MARB	FAT
-0.22	8.00	0.43	0.190	-0.030

RTG North 49 is a homozygous black, homozygous polled son of GHGF Krank K21 that complements his sire extremely well in overall design and functionality. He is clean and refined through the skull, smooth through the neck, and flows seamlessly into a well-designed front third with a smooth shoulder. RTG North 49 carries a strong topline and rib shape, finishing with a square, well-balanced hip. He stands on very good foot shape with proper flexibility and travels freely and correctly. With an extremely strong set of traits backed by a solid pedigree, RTG North 49 is a standout in the bull pen and would work exceptionally well in a purebred seedstock operation.



RTG Northern Kool N245

RTG N245 - 02/04/2025 - CDGV191737 - Homo Polled - PB94 - Black

CED	BW	WW	YW	Milk	TM	CEM	STAY	DOC
2	3.7	81	122	29	69	3	15	11

Act. BW 95

Adj. WW 830

Adj. YW 1268

SIRE RWG HORSE POWER H311
RWG KEG PARTY K429
RWG KITTY F414

DAM DDGR RESILIENT 275D
RTG FOLLOW ME
RWG DAISY 9142

SLC OUTBACK 142X
RWG ALLSTAR D510
JRI SANTIAGO 37C31
RWG KITTY D525

CCRO CAROLINA LEVERAGE 3214A
DDGR I29Z
EGL PABST L011 ET
VG VALLEY MISS 52R



SIRE

YG	CW	REA	MARB	FAT
-0.05	39.00	0.38	0.080	-0.020

RTG Northern Kool is a long-made, eye-appealing bull with a powerful and balanced design. This Keg Party son is clean through the front third and flows smoothly into a wide-topped loin with plenty of rib and overall muscle shape. He is backed by the proven Daisy cow family on the maternal side, a pedigree known for longevity, consistency, and reliable maternal genetics. When a cow family continues to prove itself year after year, the results speak for themselves. RTG Northern Kool offers a lot of bull and plenty of potential as a versatile breeding piece in a progressive program.



RTG Nexus N113

RTG N113 - 01/16/2025 - CDGV191474 - Homo Polled - PC75 - Red

CED	BW	WW	YW	Milk	TM	CEM	STAY	DOC
16	-1.6	73	113	21	58	6	12	14

Act. BW 77

Adj. WW 732

Adj. YW 1305

SIRE FHG FLYING H 80A/40A 79E ET
DMS STUCKYS KANSAS RED
DMS STUCKYS AD ASTRA ET

DAM JRI SECRETARIAT 285E78
RTG JITTER J124
RTG B208

FHG FLYING H MR EFFECT 40A
FHG FLYING H MS SANDMAN 80A
BTI GRANITE 2135M
DCSF POST ROCK LAURA 169L2 ET

JRI SECRET SENSATION 140A43
JRI MS PRIME STAR 285Z68

RTG WHISTLIN' DIXIE



SIRE

YG	CW	REA	MARB	FAT
-0.10	30.00	0.46	0.060	-0.020

RTG Nexus is a very clean-made, homozygous polled red bull that excels in calving ease with low birthweight while still offering an added growth curve. He traces back to our proven JRI Secretariat 285E78 line, known for producing elegant, clean, moderate-framed females. His dam, RTG Jitter J124, reflects those same maternal strengths and is further backed by our trusted Rosebud cow family. RTG Nexus offers a balanced, predictable genetic package that producers can rely on for easy-calving females with longevity, functionality, and performance built in.





RTG Natural Law N122

RTG N122 - 01/20/2025 - CDGV191714 - Homo Polled - PB88 - Red

CED	BW	WW	YW	Milk	TM	CEM	STAY	DOC
9	1.0	75	112	23	60	6	16	13

SIRE FHG FLYING H 80A/40A 79E ET
DMS STUCKYS KANSAS RED
DMS STUCKYS AD ASTRA ET

DAM JRI HALLELUJAH 246E50
RTG HARD CRUSH 2113
RTG HARD CRUSH

FHG FLYING H MR EFFECT 40A
FHG FLYING H MS SANDMAN 80A
BTI GRANITE 2135M
DCSF POST ROCK LAURA 169L2 ET

JRI SECRET POWERS 254C821
JRI MS HONEY 246Z10
DDGR RESILIENT 275D
RTG GIRL CRUSH

Act. BW **70**

Adj. WW **706**

Adj. YW **1209**

YG	CW	REA	MARB	FAT
-0.18	38.00	0.74	0.330	-0.020

RTG Natural Law is a clean-made, red, homozygous polled son of 12ZK that has stood out in the bull pen for his balance and overall quality. He is well designed through the front third, carries adequate rib shape and muscle expression, and travels freely and correctly. With strong performance built into his pedigree, RTG Natural Law is a bull that will add value to deep-bodied cow herds by producing solid, well-built calves with the kind of growth and structure that feedyards appreciate.



RTG Night Hawk N131

RTG NI31 - 01/26/2025 - CDGV191724 - Homo Polled - PB88 - Red

CED	BW	WW	YW	Milk	TM	CEM	STAY	DOC
8	1.4	78	112	25	64	6	14	13

Act. BW 88

Adj. WW 729

Adj. YW 1134

SIRE FHG FLYING H 80A/40A 79E ET
DMS STUCKYS KANSAS RED
DMS STUCKYS AD ASTRA ET

DAM RWG EXACT COMBINATION E409
RTG DAISY H113
RWG DAISY 9142

FHG FLYING H MR EFFECT 40A
FHG FLYING H MS SANDMAN 80A
BTI GRANITE 2135M
DCSF POST ROCK LAURA 169L2 ET
RWG RIGHT COMBINATION C506
RWG HADIE 3505
EGL PABST L011 ET
VG VALLEY MISS 52R

YG	CW	REA	MARB	FAT
-0.23	27.00	0.66	0.170	-0.040

RTG Night Hawk is an excellent darker red Kansas son that offers added length of body, a deep-sided design, and a solid, functional build. He is a complete bull backed by the strong maternal influence of the Daisy cow family, known for longevity, sound udders, and good foot quality. RTG Night Hawk is the kind that will flat out work on a solid set of deep-bodied commercial cows, delivering dependable performance and long-term maternal value.



RTG Newly Branded N121

RTG NI21 - 01/18/2025 - CDGV191713 - Homo Polled - PB88 - Rd

CED	BW	WW	YW	Milk	TM	CEM	STAY	DOC
10	0.7	68	102	17	51	5	10	14

Act. BW 83

Adj. WW 663

Adj. YW 1204

SIRE FHG FLYING H 80A/40A 79E ET
DMS STUCKYS KANSAS RED
DMS STUCKYS AD ASTRA ET

DAM JRI HALLELUJAH 246E50
RTG FRIDAY NIGHTS J115
RTG FRIDAY NIGHTS

FHG FLYING H MR EFFECT 40A
FHG FLYING H MS SANDMAN 80A
BTI GRANITE 2135M
DCSF POST ROCK LAURA 169L2 ET
JRI SECRET POWERS 254C821
JRI MS HONEY 246Z10
DDGR RESILIENT 275D
RTG MISS LILA Y222



SIRE

YG	CW	REA	MARB	FAT
-0.17	44.00	0.85	0.280	-0.010

RTG Newly Branded is a strong example of the consistency found in this year's red bull offering. The Kansas Red sons have proven to deliver clean, attractive front-end profiles from skull shape through the neck and shoulder, while still offering excellent rib, capacity, and plenty of hair—and RTG Newly Branded follows that pattern closely. On the maternal side, his pedigree traces back to our Roca female, a cow family that has contributed numerous replacement females to our program and is known for clean, tidy udders and correct teat development. This is a unique, user-friendly bull that combines solid paternal and maternal strengths into a well-balanced, practical package for commercial or seedstock use.



SIRE



GRANDSIRE



RTG No Label N106

RTG N106 - 01/11/2025 - CDGV191470 - Homo Polled - PB88 - Black

CED	BW	WW	YW	Milk	TM	CEM	STAY	DOC
11	1.4	65	93	23	56	5	15	11

SIRE EGL ENCORE E7166
GHGF KRANK K21
EGL DEANNA F201

JOB DANELL TD CHICO LOCO 28Y
GRU MS ASTRO 298Z
GHGF ZEUS 61Z
GHGF DEANNA 77D

Act. BW **72**

Adj. WW **668**

DAM JRI WHERE'S THE BEEF 307H40
FLAD FLADELAND RED LABEL 67L
FLAD FLADELAND BABY DUCK 211G

JRI GENERAL PATTON 213B97 ET
JRI MS ONE DERFUL 307D30
FLAD FLADELAND PAINKILLER 123C ET
FLAD DJW FINE WINE 89W

Adj. YW **1255**

YG	CW	REA	MARB	FAT
-0.32	29.00	0.63	0.040	-0.080

RTG No Label is a long-bodied, structurally sound, well-framed bull sired by our GHGF Krank K21 herd sire, whom we proudly co-own with Royal Western. We have been extremely pleased with the consistency, calving ease, and overall quality GHGF K21 has delivered, particularly in first-calf heifers. RTG No Label offers very manageable birthweight while remaining right on breed average for both calving ease and growth. His dam, FLD Red Label 67L, purchased from the Gathering Female Sale from Fladeland Livestock, is a moderate, productive female with an exceptionally clean udder and correct teat size and placement—traits you can confidently expect to carry forward into the progeny of RTG No Label for quality in herd success.



Lot 15

RTG Navigate N109

RTG N109 - 01/15/2025 - CDGV191471 - Polled - PB94 - Red

CED	BW	WW	YW	Milk	TM	CEM	STAY	DOC
12.5	1.4	76	109.5	29.5	67.5	5	14.5	11

Act. BW 64

Adj. WW 640

Adj. YW 1116

SIRE JRI WHERE'S THE BEEF 307H40
RTG LA BAMBA L201
DDN BELLY RIVER FANDANGO 877F

DAM RTG DOCTOR WHO
RTG GLITZ
RTG EASY TO PLEASE

JRI GENERAL PATTON 213B97 ET
JRI MS ONE DERFUL 307D30
HL SLC MASTERPLAN 58C
DDN 140B

RWG XTREME TRACTION 0521
RWG WOODLAND 9143
KGJ HIGHLINE DRACULA 100A
RTG ROCKY TOP MISS U217

YG	CW	REA	MARB	FAT
-0.11	54.00	0.80	0.040	-0.010



SIRE



DAM

RTG Navigate is another quality son of RTG La Bamba, offering clean lines and an attractive profile. He is clean through the skull, smooth into the shoulder, and carries good length of spine with a balanced, functional build. Strong calving ease is built into this bull, backed by his dam, RTG Glitz, who consistently shines when it comes to producing calving-ease bulls. She is a clean-made, structurally sound cow with excellent udder quality, correct teat size, and strong foot quality. RTG Navigate is a reliable, user-friendly option for producers looking to add calving ease without giving up structure or functionality.



Lot 16

RTG Naked Gun N367

RTG N367 - 03/14/2025 - CDGV191759 - Homo Polled - PB94 - Red

CED	BW	WW	YW	Milk	TM	CEM	STAY	DOC
8	3.6	84	128	27.5	69	3.5	14	12

Act. BW 95

Adj. WW 790

Adj. YW 1253

SIRE JRI WHERE'S THE BEEF 307H40
RTG LA BAMBA L201
DDN BELLY RIVER FANDANGO 877F

DAM JRI SECRETARIAT 285E78
RTG FANDANGO H109
DDN BELLY RIVER FANDANGO 877F

JRI GENERAL PATTON 213B97 ET
JRI MS ONE DERFUL 307D30
HL SLC MASTERPLAN 58C
DDN 140B

JRI SECRET SENSATION 140A43
JRI MS PRIME STAR 285Z68
HL SLC MASTERPLAN 58C
DDN 140B

YG	CW	REA	MARB	FAT
-0.07	47.00	0.58	0.320	-0.020



SIRE



GRAND DAM

RTG Naked Gun is a very solid red bull sired by RTG La Bamba and stands out as one of the more fleshy, soggy-made younger bulls in the pen. He remains soft made and smooth jointed, with a balanced design that combines natural thickness, depth of body, and structural soundness. RTG Naked Gun offers a strong blend of growth and dependable maternal traits, making him a practical option for producers wanting cattle that maintain condition, convert efficiently, and stay productive. Backed by a reliable pedigree, this bull brings versatility and functionality that will translate well into both quality feeder calves and productive replacement females.



RTG No Vacancy N103

RTG N103 - 01/09/2025 - CDGV191467 - Homo Polled - PC63 - Red

CED	BW	WW	YW	Milk	TM	CEM	STAY	DOC
13	-2.2	59	86	21	50	7	11	14

Act. BW 70

Adj. WW 688

Adj. YW 1125

SIRE **DMS STUCKYS KANSAS RED**
FHG FLYING H 80A/40A 79E ET
DMS STUCKYS AD ASTRA ET

FHG FLYING H MR EFFECT 40A
FHG FLYING H MS SANDMAN 80A
BTI GRANITE 2135M
DCSF POST ROCK LAURA 169L2 ET

DAM **RTG B208**

RTG WHISTLIN' DIXIE

RWG SHAMROCK 6099 ET
RTG ROCA 103W

YG	CW	REA	MARB	FAT
-0.23	30.00	0.49	0.090	-0.060



MAT.SIB

RTG No Vacancy is an exceptional calving ease bull sired by our latest herd sire, DMS Stucky Kansas Red 12ZK, who has consistently delivered easy births while still providing outstanding growth and performance. Backed by our proven Rosebud maternal cow family, this bull comes from a sound, fertile pedigree known for clean udders, strong feet, and built-in longevity. RTG No Vacancy is the kind that calve easy, hold condition, and stay productive, making him a dependable choice for producers looking to build a uniform, long-lasting cow herd without sacrificing performance.



RTG Nosler N260

RTG N260 - 02/19/2025 - CDGV191752 - Homo Polled - PB88 - Red

CED	BW	WW	YW	Milk	TM	CEM	STAY	DOC
13	-0.8	73	102	18	54	7	13	13

Act. BW 72

Adj. WW 695

Adj. YW 1127

SIRE **RWG KEG PARTY K429**
RWG HORSE POWER H311
RWG KITTY F414

SLC OUTBACK 142X
RWG ALLSTAR D510
JRI SANTIAGO 37C31
RWG KITTY D525

DAM **RTG ROCA H106**
RWG EXACT COMBINATION E409
RTG B208

RWG RIGHT COMBINATION C506
RWG HADIE 3505

RTG WHISTLIN' DIXIE

YG	CW	REA	MARB	FAT
-0.12	39.00	0.61	0.000	-0.20



DAM

RTG Nosler is a moderate-framed bull with a refined skeletal structure and balanced design. He is sired by RWG Keg Party K429, a bull that has proven to be a true moderator in our program—successfully reducing frame size while maintaining rib shape, a thick topline, and muscle capacity in his progeny. RTG Nosler is an ideal option for larger-framed base females where downsizing is desired without giving up performance, depth, or power. Backed by our dependable Rosebud cow family, this bull offers the kind of maternal consistency and functional quality that has built strong, productive females in our program year after year.





Lot 19

RTG Notebook N128

RTG N128 - 01/25/2025 - CDGVI91721 - Homo Polled - PB94 - Red

CED	BW	WW	YW	Milk	TM	CEM	STAY	DOC
5	4.2	75	103	26	63	5	16	12

Act. BW 102

Adj. WW 705

Adj. YW 1170

SIRE **RWG KEEP IT COUNTRY K451**
RWG HORSE POWER H311
RWG LORA E304 ET

DAM **RTG EMMA**
KGJ HIGHLINE DRACULA 100A
RWG DAISY 9142

SLC OUTBACK 142X
RWG ALLSTAR D510
RWG BLOWIN' MINDS 4402
SLC LORA 164Y

FLAD FLADELAND DRACULA 57Y
KGJ HIGHLINE COCOA BUSH 17L
EGL PABST L011 ET
VG VALLEY MISS 52R

YG	CW	REA	MARB	FAT
-0.20	39.00	0.87	0.120	-0.020

RTG Notebook is a clean, complete Keep It Country son that blends solid performance with a dependable foundation of longevity and maternal strength. This is the kind of bull that will truly pay his way through an outstanding set of replacement females, offering super clean, tidy udders with good milk production, strong foot quality, and excellent maternal instincts. His pedigree is backed by the proven Daisy cow family on the dam's side, a line that has consistently produced keepers year after year in our program. RTG Notebook is a balanced, functional bull and one to keep an eye on sale day.



Lot 20

RTG Now Country N112

RTG N112 - 01/16/2025 - CDGVI91712 - Homo Polled - PB88 - Red

CED	BW	WW	YW	Milk	TM	CEM	STAY	DOC
4	1.5	68	106	24	58	3	13	11

Act. BW 90

Adj. WW 645

Adj. YW 1151

SIRE **RWG KEEP IT COUNTRY K451**
RWG HORSE POWER H311
RWG LORA E304 ET

DAM **RTG F315**
DDN 41D
RTG MISS DIXIE U

SLC OUTBACK 142X
RWG ALLSTAR D510
RWG BLOWIN' MINDS 4402
SLC LORA 164Y

BEA 442B ET
JAB ALEXANDRA 3315
RWG XTREME TRACTION 0521
RTG ROCKY TOP MISS U217

YG	CW	REA	MARB	FAT
-0.08	60.00	0.71	0.170	-0.030

RTG Now Country is a solid-quality bull offering deeper red muscle expression and added length of spine, making him a unique pedigree-built option in this year's offering. He traces back to RWG Horsepower on the top side, a sire that has gained significant popularity for the consistency and quality found in his progeny. His dam, RTG F315, is a deep red, productive female that has produced several bulls that consistently rank among the most sought-after in our bull sale, including our high seller in 2024. With strong maternal strength and excellent carcass merit—ranking Top 1% for CW and Top 15% for CREA—RTG Now Country is a dependable, high-value bull that will not disappoint.





STON *Nugget* 13N

STON 13N - 01/24/2025 - CDGV192177 - Homo Polled - PC75 - Black

CED	BW	WW	YW	Milk	TM	CEM	STAY	DOC
13	-0.6	73	104	21	57	6	16	10

Act. BW 68

Adj. WW 761

Adj. YW 1132

SIRE RED SSS SUNBRY G-MAN 404J
STON LEGEND 18L
STON PARADEE 10E

DAM DDN 09H
STON MISS PARADEE 19L
STON MISS PARADEE 15H

RED SSS GROWLER 815G
RED SSS ROSE 160E
STON CRAZY BULL 1C
STON MISS PARADEE 18C

JRI SECRETARIAT 285E78
KGJ HIGHLINE 8197F
RWG EXACT COMBINATION E409
STON PARADEE 10E

YG	CW	REA	MARB	FAT
-0.09	30.00	0.37	-0.050	-0.020

STON Nugget 13N is a maternally orientated individual who is an incredible heifer bull candidate. He is a moderate performance bull who has generations of maternal greatness to contribute to a replacement pen. The added bonus of hair and a temperament of a puppy dog will make him a farm favorite for many years. In this incredible market longevity is key to profitability, and this is a great example of what our longest lasting cow family consistently produces. They are beautiful uddered, and problem free cattle and Nugget 13N will prove to be a sound investment and help to move a herd forward.



STON *Nostalgic* 5N

STON 5N - 01/05/2025 - CDGV192176 - Homo Polled - PB94 - Black

CED	BW	WW	YW	Milk	TM	CEM	STAY	DOC
12	-1.0	72	104	26	62	6	15	12

Act. BW 84

Adj. WW 736

Adj. YW 1310

SIRE RWG EXACT COMBINATION E409
RWG GRAND PLAN G420 ET
RWG KITTY'S DREAM D526

DAM STON BLACK PYTHON 47B
STON MISS DEBBIE 4H
VV RED DEBBIE 32D

RWG RIGHT COMBINATION C506
RWG HADIE 3505
BEAS 2806Z
RWG ROXY KITTY X 0301

PCCI MR TITLELIST 1169Y
SLC ROYAL GIRL 28X
FRL FIR RIVER STAMKOS 879A
VV DEBBIE 62A

YG	CW	REA	MARB	FAT
-0.06	38.00	0.47	0.210	-0.10

STON Nostalgic 5N is an eye catching individual and was mothered by one of the best up and coming cows in our herd. She hasn't made the donor pen yet, but is next on the docket. Her track record is what will secure her spot, simply improving cattle no matter which bull she is mated with and with a killer look to boot that is passed along to her progeny. Nostalgic will ensure a sound investment and produce cattle with front pasture look and females you will want to retain. Look for Nostalgic to sire reasonable birth weights, balanced eye appealing cattle who consistently produce pounds and cause the neighbors to be envious.



STON Navigator 4N

STON 4N - 01/04/2025 - CDGVI92175 - Homo Polled - PB94 - Red

CED	BW	WW	YW	Milk	TM	CEM	STAY	DOC
11	0.4	71	97	22	58	5	15	11

Act. BW **83**

Adj. WW **764**

Adj. YW **1292**

SIRE RWG EXACT COMBINATION E409
RWG GRAND PLAN G420 ET
RWG KITTY'S DREAM D526

DAM VV ZAKE 114Z
STON MISS PARADEE 13D
STON MISS PARADEE 64R

RWG RIGHT COMBINATION C506
RWG HADIE 3505
BEAS 2806Z
RWG ROXY KITTY X 0301

FRL FIR RIVER RANALDO 38U
SLC DEBBIE 209S
BTI RED ALERT 2077K
JBM PARADEE 14N

YG	CW	REA	MARB	FAT
-0.13	34.00	0.62	0.130	-0.010



STON Navigator 4N is a red performance bull who is one to build a cow herd around. Mothered by a long term asset, STON Paradee 13D, his longevity will ensure he will make generations that will help rebuild the cow herd back into the country. We have several sisters, we have kept a brother, another has won the Bull Futurity, and the best is yet to come! Navigator and his younger ET sister will be yet again a tremendous asset to the next generation, and the sister is without a doubt the best we have EVER raised. I can't say enough about Navigator, if you are in this industry for decades to come this is your guy. He will make a difference and leave an impact that you will smile about 10 years from now.



STON Northstar 2N

STON 2N - 01/02/2025 - CDGVI92174 - Polled - PB88 - Black

CED	BW	WW	YW	Milk	TM	CEM	STAY	DOC
8	2.2	75	113	22	60	3	11	13

Act. BW **82**

Adj. WW **711**

Adj. YW **1331**

SIRE JRI GENERAL PATTON 213B97 ET
JRI ALAN 68G3
JRI MS MY PAYDAY 68E2

DAM SLC ROADIE 137C
STON RED MAIDEN 32G
VV WIND ZONG 45Z

JRI POP A TOP 197T83
JRI MS EXTRAVAGANT 213T87
BASIN PAYWEIGHT 1682
JRI MCCLINTOCK 68Y8

CES DECKA ROADIE 81T
SLC PAM 175Z
SLC MASTER PLAN 191U
VV WINDY WATER 197W

YG	CW	REA	MARB	FAT
-0.15	38.00	0.57	0.240	-0.030



STON Northstar 2N is as soft made and maternal in his ability as they come. The performance is standard, and his pattern will attract your attention and leave an impression. Northstar is from a maternal sister to the dam as our high seller last year, and he follows a similar level of balance and quality. Had we shown this year, he would have worn a halter. He is quiet enough to have enjoyed the trip to town, and would have represented the program well. His real world value lies in the generations he will produce, cow families and consistency are what it is about and Northstar is a great option for several scenarios.



MURPHY'S *Motive* 1N

CMCC 1N - 19/01/2025 - 2424197 - Angus - Black

CED	BW	WW	YW	Milk	TM	CEM	STAY	DOC
6.0	0.7	59	111	26		7.0		21

SIRE HF KODIAK 5R
SOO LINE MOTIVE 9016
TLA BEAUTY 5R

DAM BROOKMORE BISMARCK 19A
MURPHY'S CLASSY LADY 1802
HENDERSON CLASSY LADY 9C

YG	CW	REA	MARB	FAT
	41	0.48	0.00	0.046

SANDY BAR ADVANTAGE 43M
WILBAR RUBY 955N
RR 7407 RAINMAKER 2154
TERRLENE BEAUTY 35F

S A V BISMARCK 5682
BROOKMORE LENLOCK 53Y
REMITALL F RAGE 9A
HENDERSON CLASSY LADY 33'09



DAM



SIRE

Act. BW **85**

Adj. WW **746**

Adj. YW

Recommended for heifers. Murphy's Motive 1N has been a front runner in the 2025 calves since day one and hasn't missed a beat. He is a hairy, long, and stoutly made individual that completes his make-up by having great structure. Motive 1N has the calving ease and will give you the pounds come weaning time. His dam Murphy's Classy Lady 1802, is one that is easy to spot within the herd. An easy fleshing, big body cow that constantly calves first cycle year after year and has provided daughters I have retained in the herd. Be hard for any cattlemen to part with Motive 1N female offspring.

Lot 26

MURPHY'S Motive 2N

CMCC 2N - 20/01/2025 - 2424198 - Angus - Black

CED	BW	WW	YW	Milk	TM	CEM	STAY	DOC
6.0	0.7	54	97	27		-1.0		17

Act. BW 83

Adj. WW 686

Adj. YW

SIRE HF KODIAK 5R
SOO LINE MOTIVE 9016
TLA BEAUTY 5R

DAM GREENWOOD G.I. JOE JIP 76G
MURPHY'S BLACKBIRD 2108
MURPHY'S BLACKBIRD 1808

SANDY BAR ADVANTAGE 43M
WILBAR RUBY 955N
RR 7407 RAINMAKER 2154
TERRLENE BEAUTY 35F

S A V TEN SPEED 302
REMITALL F TIBBIE 51C
BROOKMORE BISMARCK 19A
HENDERSON BLACKBIRD 11B

YG	CW	REA	MARB	FAT
	42	0.86	0.20	0.019



GRANDSIRE



GRANDDAM

Recommended for cows. Here is another Soo Line Motive 9016 son that will add muscle shape, hair, length of body and bone into his progeny. Like his paternal brothers, 2N has had the look of a herd bull through his development. The kind of bull that will sire steers that finish and grade well. Dam is an easy fleshing, structurally sound female.



NRCS

Lot 27

MURPHY'S Motive 3N

CMCC 3N - 22/01/2025 - 2424199 - Angus - Black

CED	BW	WW	YW	Milk	TM	CEM	STAY	DOC
-6.0	2.7	65	114	24		-3.0		21

Act. BW 108

Adj. WW 817

Adj. YW

SIRE HF KODIAK 5R
SOO LINE MOTIVE 9016
TLA BEAUTY 5R

DAM MUSGRAVE 316 STUNNER
MURPHY'S LADY EILEEN 2309
MURPHY'S LADY EILEEN 2003

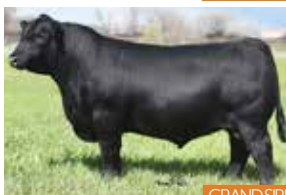
SANDY BAR ADVANTAGE 43M
WILBAR RUBY 955N
RR 7407 RAINMAKER 2154
TERRLENE BEAUTY 35F

LD CAPITALIST 316
MCATL BLACKBIRD 831-1378
NORTHLINE COOL CAT 76B
MURPHY'S LADY EILEEN 1807

YG	CW	REA	MARB	FAT
	44	0.49	0.39	0.010



GRANDSIRE



GRANDSIRE

Recommended for cows. Another long bodied athletic Motive son adds the style in his structure and presence out of a first calver. A stud that has an elite breeding of sires that created this wide hiped, big boned and stout bull that will stamp his mark on his calves. Motive 9016 and Stunner 316 are recognized for daughters that are easy fleshing, moderate frame, functional and beautifully uddered. With these genetics backing this guy, be a great opportunity to incorporate into your herd.



NRCS



Lot 28

MURPHY'S North America 7N

CMCC 7N - 28/01/2025 - 2424203 - Angus - Black

CED	BW	WW	YW	Milk	TM	CEM	STAY	DOC
-5.0	4.5	67	109	18		-2.0		26

Act. BW 98

Adj. WW 765

Adj. YW

SIRE S A V PRESIDENT 6847
S A V AMERICA 8018
S A V MADAME PRIDE 0075

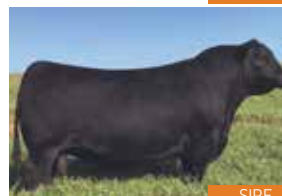
DAM MOHNEN SOUTH DAKOTA 402
MURPHY'S JESTRESS 1901
HENDERSON JESTRESS 15A

COLEMAN CHARLO 0256
S A V BLACKCAP MAY 4136
S A F 598 BANDO 5175
S A V MADAME PRIDE 8264

MOHNEN DENSITY 730
MOHNEN JILT 539
WAF ZORZAL 321U
SPRUCE VIEW JESTRESS 28T



DAM



SIRE

YG	CW	REA	MARB	FAT
	40	0.55	0.39	0.058

Recommended for Cows. As a favourite in the bull pen this year it is easy to see why. The growth and power in this specimen are real. Huge hipped, long spine and standing on a strong, true base; this individual will cover any environment. His dam, Murphy's Jestress 1901 has not missed on progeny! Her 2024 bull, Murphy's Revival 08M is a walking herd bull at Murphy Cattle Co and YV Ranch. She is the soundest footed female in my herd and remains to bring excitement every year of her offspring.



Lot 29

MURPHY'S Unbelievable 13N

CMCC 13N - 30/01/2025 - 2424264 - Angus - Black

CED	BW	WW	YW	Milk	TM	CEM	STAY	DOC
7.0	0.5	67	116	25		14.0		31

Act. BW 82

Adj. WW 767

Adj. YW

SIRE COLEMAN BRAVO 6313
COVEY HILL UNBELIEVABLE 4J
U2 ROSEBUD 1F

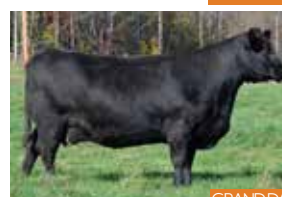
DAM MURPHY'S ICE CAP 2117
MURPHY'S JESTRESS 2319
MURPHY'S JESTRESS 2116

COLEMAN CHARLO 0256
COLEMAN DONNA 714
HA PRIME CUT 4493
U-2 ROSEBUD 157C

EATHINGTON ICE CAP 305C
MURPHY'S LADY EILEEN 1807
S A V SUPERCHARGER 6813
HENDERSON JESTRESS 2812



DAM



GRANDDAM

YG	CW	REA	MARB	FAT
	46	0.49	0.22	-0.006

Recommended for Heifers. Murphy's Unbelievable 13N, a low birth weight, large scrotal, soggy bodied son of Covey Hill Unbelievable 4J and out of a first calver; Murphy's Jestress 1913, a female recognized in the herd for good udder, square lines and docile temperament. This unique pedigree has strong calving ease influence, with Coleman Bravo 6313 and Eathington Ice Cap 305C. Also in the pedigree is HA Prime Cut 4493 and SAV Supercharger 6813, bulls that add the pounds come weaning. 13N is a bull that will make fleshy steers and females.



Lot 30

MURPHY'S Navajo 19N

CMCC 19N - 03/02/2025 - 2452848 - Angus - Black

CED	BW	WW	YW	Milk	TM	CEM	STAY	DOC
6.0	0.2	70	126	25		7.0		6

Act. BW 94

Adj. WW 707

Adj. YW

SIRE SITZ STELLAR 726D
SITZ RESILIENT 10208
SITZ MISS BURGESS 1856

DAM 4DJ **DONNA 214K**
SQUARE B ATLANTIS 8060
COLEMAN DONNA 504

MOHNEN SUBSTANTIAL 272
SITZ PRIDE 200B
SITZ TOP GAME 561X
SITZ MISS BURGESS 4381

S A V RAINFALL 6846
ELBANNA OF CONANGA 1209
S A V RESOURCE 1441
COLEMAN DONNA 714

YG	CW	REA	MARB	FAT
	47	0.65	0.65	0.026



FULL SIB



GRAND DAM

Recommended for Heifers. Murphy's Navajo 19N is bred for maternal power. He puts together a low birth weight with a smooth design on a square base. Murphy's Donna 2311, full sib to 19N; was the class winner in the senior heifer calf division at 2025 Farmfair International. Backed by Coleman Donna 504 of his bottom side will surely leave you females that you will retain in your herd and Sitz Resilient 10208 on top side known for his maternal traits, carcass quality and structural soundness.



Lot 31

MURPHY'S No Doubt 21N

CMCC 21N - 08/02/2025 - 2434483 - Angus - Black

CED	BW	WW	YW	Milk	TM	CEM	STAY	DOC
-3.0	3.7	50	76	21		7.0		10

Act. BW 95

Adj. WW 770

Adj. YW

SIRE PEAK DOT NO DOUBT 202F
MURPHY'S NO DOUBT 2320
RRAR TIBBIE 19F

DAM MURPHY'S ICE CAP 2117
MURPHY'S MISSIE 2316
MURPHY'S MISSIE 2113

HOOVER NO DOUBT
PEAK DOT MIA 4A
S A V THRIVE 5054
RRAR TIBBIE 22B

EATHINGTON ICE CAP 305C
MURPHY'S LADY EILEEN 1807
S A V SUPERCHARGER 6813
MURPHY'S MISSIE 1813

YG	CW	REA	MARB	FAT
	34	0.81	0.56	0.016



SIB



SIRE

Recommended for cows. Murphy's No Doubt 21N is a smooth bodied, moderate framed and ideal headed angus bull. Son of Murphy's No Doubt 2320, who is gaining traction on quality females that will have a lasting footprint in the herd and out of a first calver that has a great udder and structure. Paternal sister, Murphy's Blackbird 2526 was summer division heifer calf champion at 2025 Farmfair International. He will add some angularity, hip and loin expression to his offspring.



CDC Commercial Heifers



CDC Farms is very proud to offer another great set of commercial heifers to the 2026 Draft Picks Sale. An excellent solid set of black females on offer out of our program that still consist of Gelbvieh influenced commercial FI heifers. These particular females on offer are from a strong maternal based program that has been built over four decades focusing on foot structure, udder quality, functionality and productivity to ensure profitable weight gain on steers and well-rounded replacement females. CDC Farms focuses on a complete herd health management protocol. At birth these females receive their Naselgen, Tot-trazuril, Selenium and Vitamin ADE shots. Once they reach three months of age leading to pasture kick out, they receive their Bovishield Gold One Shot and Ultrabac 7/Somubac. As the fall run hits when calves become weaned, a booster of Bovishield Gold One Shot and Ultrabac 7/Somubac is re-introduced. Once the calves are weaned and on feed, they are fed a nutritionally balanced total mixed ration to ensure proper growth and development into sound, fertile females. All of the heifers are vet checked and palpated prior to breeding season. The commercial program at CDC Farms strives to raise the next best productive and profitable line of females to focus on continually raising top end steers but more importantly, to raise quality functional cattle that work in today's beef industry.

CDC Farms would like to thank the 2025 Commercial Heifer volume buyer for their purchases: Drew Macdonell of Macdonell Farms

CDC Farms :: Dale Congdon :: 403 350 9830



CDC Commercial Heifers

Lot 32

7 ANGUS *Commercial* HEIFERS

Lot 33

5 GELBVIEH *Commercial* HEIFERS

Lot 34

5 ANGUS *Commercial* HEIFERS

Lot 35

5 ANGUS *Commercial* HEIFERS

Lot 36

5 GELBVIEH *Commercial* HEIFERS



We would like to extend a huge thank you to all our past buyers:

4W Farms
AGR Farms
Albert Bamford
Anchor P Farms
Andrew Kirk
Anton Lass
Arnaldo Elias- Rancho El Tapiro
B & R Ranch
Barber Farms
Barwick Gelbvieh
Beastrom Ranch
Black Poplar Ranch
Bradac Ranch
Brendan Anderson
Brian Fletcher
Brian Hrdlicka
Brian Pfeffer
Brian Stratuliak
Brittain Farms
Butler Creek Farms
Cameron Suominen
CDC Farms
Chimney Butte Ranch
Cody Milliken
Cody Wolbeck
Cory Marshall
Covington Gelbvieh
Cowlick Ranch

Cranview Gelbvieh
Crooked Creek Cattle Co
Curtis McCracken
Dale Oliver
Dan Roth
Danny Brown
Darren & Crystal Hann
Sean Soppitt
Darwin Berg
David Eggeson
Diamond A Farms
Don & Dianna Ewanick
Donald & Brenda McMann
Dustin McMann
Doug & Rita Cox
Eugene Nichols
Fladeland Livestock
Frontier Prairie Farms
Garth Meehan
Gary & Shelly Rusaw
George Simpson
Goodview Gelbvieh
Green Acres Cattle Co
Gustin's Diamond D
Handel Farms
Harvey Goetz
Haustein Farms
High Country Acres

Hillsdown Gelbvieh
HMR Livestock
Ian Koester
Iron Creek Farms Ltd
Ivers Cattle Company
Jaden Bettcher
Janzen Gelbvieh
Jarrod Ecker
Jay Krahn
Jeff Anderson
JML Farms
Joey Davis- 16 Tons Gelbvieh
John Pfeffer
Judd Ranch Inc
Justin & Brandi Vetter
K. Congdon Farms
Katie Michaelchuk
Keith Gudmundson
Kelly Cardinal
Ken Homeniuk
Ketterling Gelbvieh
Kevin Bennett
Kevin & Rhonda DalBalcon
Kevin Renner
Kicking Horse Ranch
Lansing Land & Cattle
LC Cattle- Barry Davisson
Len Lawrence

Len McCook
Len Kohlman- Leoleen Gelbvieh
Lennor Farms
Les Wiebe
Lorne Conrad
Lucas & Amanda Vangsness
Lyle Jones
Lyle Morgenstern
MacDonell Farms
Mari-Anne Wiebe
Matthew Fuller
Mayton Farms Inc
Melissa Burton
Milliken Farms
Milne's Gelbvieh
Mike Jasper
Moe Gelbvieh
Morgan Sangster
Murphy Cattle Company
Myron Vick
Nattestad Farms
Neil Frank
Nelson Gelbvieh
Nowack Cattle Co
Pat Walsh
Peterosa Exports
Pin to Point Gelbvieh
Plus One Cattle Company

Prairie Hills Gelbvieh
Quinn Harder
Rancho Agualinda
Riverside Ranch
Robert Guynup
RPS Gelbvieh
RJ Genetics
Rocky Top Gelbvieh
RPS Gelbvieh
Rumfeldt Farms
Rusty Nichols
Severtson Land & Cattle
Silver Line Farm
Split Creek Ranch
Steve May
Steven Terry- Terry Farms
Sword Farms
Tanner & Michelle Lawton
Tim Fuller
Tim Ruth
TJB Gelbvieh
Tom Smith
Tony & Kathy Kamlah
Trevor Neuls
Triple S Cattle Company
Wayne Selin
Wes Newton
Williams Gelbvieh Farm







4DJ Majestic Doubt 321M

HDKJ 321M - 30/03/2024 - 2415458 - Angus - Black

CED	BW	WW	YW	Milk	TM	CEM	STAY	DOC
16.0	-1.2	50	93	20		11.0		2

Act. BW 82

Adj. WW 727

Adj. YW 1234

SIRE PEAK DOT NO DOUBT 202F
RRAR NO DOUBT 15K
RRAR TIBBIE 29H

DAM HA COWBOY UP 5405C
4DJ ROSEBUD 903G
HF ROSEBUD 246Z

HOOVER NO DOUBT
PEAK DOT MIA 4A
BAR-H MINDBENDER 141D
RRAR TIBBIE 19F

HA OUTSIDE 3008
HA BLACKCAP LADY 1602
HF TIGER 5T
HF ROSEBUD 94P

YG	CW	REA	MARB	FAT
	41	0.64	0.64	0.043

4DJ Majestic Doubt 321M is the direct son of the foundation Donor 4DJ Rosebud 903G. She's a full sister to many of the breeds top females & sires including HF Rosebud 48F & HF Roper 27F, also being a maternal sister to HF Northern Prince 182K. To say the least a pedigree trusted & valued in the angus industry for maternal greatness and production values. Sired by No Doubt 15K means you gain another shot of elite pedigree and production in a calving ease package. With elite top of the breed IMF values and a shot of Bar H Mind-bender 141D. Dig through the pedigree and find generation after generation of great angus genetics.



4DJ Master Doubt 324M

HDKJ 324M - 31/03/2024 - 2415459 - Angus - Black

CED	BW	WW	YW	Milk	TM	CEM	STAY	DOC
8.0	0.3	55	94	25		6.0		4

Act. BW 88

Adj. WW 714

Adj. YW 1217

SIRE PEAK DOT NO DOUBT 202F
RRAR NO DOUBT 15K
RRAR TIBBIE 29H

DAM HILLS OF HOME HARVESTOR 2F
4DJ ROSEBUD 218K
4DJ ROSEBUD 903G

HOOVER NO DOUBT
PEAK DOT MIA 4A
BAR-H MINDBENDER 141D
RRAR TIBBIE 19F

S A V HARVESTOR 0338
HF ECHO 112R
HA COWBOY UP 5405C
HF ROSEBUD 246Z

YG	CW	REA	MARB	FAT
	44	0.59	0.56	0.042

If you're looking for an elite angus bull here he is! In matched calving ease, way above the curve growth, awesome foot quality, top end carcass metrics and cow power stacked in his pedigree. Neat part is 324M would be an outcross to a major portion of the angus herds, yet he has layers of proven, predicable pedigree. We think so highly of him he serviced all the heifers not related to him and a bunch of our top commercial heifers. Plain and simply if he wasn't related to so many of our angus females he wouldn't be for sale. True angus herd sire prospect for a phenomenal model angus dam in Rosebud 218K, who's 2025 born heifer is the best heifer in the replacement pen and is a full sister to 324M.

Lot 39

4DJ Major 405M

HDKJ 405M - 02/04/2024 - 2400494 - Angus - Black

CED	BW	WW	YW	Milk	TM	CEM	STAY	DOC
2.0	3.7	64	109	31		8.0		13

Act. BW 94

Adj. WW 656

Adj. YW 1189



DAM

SIRE **HILLS OF HOME HARVESTOR 2F**
S A V HARVESTOR 0338
HF ECHO 112R

DAM **BAR-H TIBBIE 129F**
BAR-H MINDBENDER 141D
BAR-H TIBBIE 31C

S A V HERITAGE 6295
S A V EMBLYNETTE 7749
BT RIGHT TIME 24J
HF ECHO 187N

S SUMMIT 956
HF TIBBIE 93U
BAR-H CROSSFIRE 63A
BAR-H HOPE 1A

YG	CW	REA	MARB	FAT
	41	0.50	0.07	0.012

4DJ Major 405M is a long-bodied son of the elite donor Bar H Tibbie 129F who has quickly created a buzz in the angus industry. Her progeny are so long, massively constructed and heavy muscled. They are great performance cattle with excellent maternal strength, sweet dispositions and that makes her fun to duplicate. They are the kind of cattle that pay, so mix that with the growth and value of a Harvester son from an Echo cow and "profitable" is stacked in. Set up for success and high ROI.



Lot 40

4DJ Minor Doubt 408M

HDKJ 408M - 03/04/2024 - 2415460 - Angus - Black

CED	BW	WW	YW	Milk	TM	CEM	STAY	DOC
12.0	1.2	63	114	21		10.0		6

Act. BW 83

Adj. WW 693

Adj. YW 1235

SIRE **RRAR NO DOUBT 15K**
PEAK DOT NO DOUBT 202F
RRAR TIBBIE 29H

DAM **RAINBOW HILLS PRIDE 70K**
JANSSEN DOW JONES 0005
RAINBOW HILLS PRIDE 20B

HOOVER NO DOUBT
PEAK DOT MIA 4A
BAR-H MINDBENDER 141D
RRAR TIBBIE 19F

DEER VALLEY GROWTH FUND
JANSSEN BESSIE HEIRESS 6028
SIX MILE THUNDER STRUCK 162Y
MEADOWS PRIDE 22U

YG	CW	REA	MARB	FAT
	52	1.04	0.51	0.031

4DJ Minor Doubt 408M is a very balanced phenotype son of No Doubt 15K who builds progeny with lots of look and presence, yet soft structured, deep bodied and easy fleshing. 408M's dam is a tank of a cow, as deep and wide as you can make one, good udder quality and highly maternal. With growth on both sides of his pedigree, yet modest birth weight, he's a great choice for calving seasons made easy and yet, high return on progeny's growth curves.





4DJ Master 413M

HDKJ 413M - 04/04/2024 - 2400493 - Angus - Black

CED	BW	WW	YW	Milk	TM	CEM	STAY	DOC
0.0	2.6	59	107	28		4.0		22

Act. BW 86

Adj. WW 758

Adj. YW 1268

SIRE S A V HARVESTOR 0338
HILLS OF HOME HARVESTOR 2F
HF ECHO 112R

DAM BAR-H MINDBENDER 141D
BAR-H TIBBIE 129F
BAR-H TIBBIE 31C

S A V HERITAGE 6295
S A V EMBLYNETTE 7749
BT RIGHT TIME 24J
HF ECHO 187N

S SUMMIT 956
HF TIBBIE 93U
BAR-H CROSSFIRE 63A
BAR-H HOPE 1A



DAM



GRANDSIRE

YG	CW	REA	MARB	FAT
	42	0.31	0.30	0.074

4DJ Master 413M is another high quality flush mate brother in the offering. As you'll notice with these flush mates they are all exceptionally long bodied, stout made, with great width of base. Awesome front 1/3rds with ideal angus character heads. They are heavy muscled angus cattle with off the charts maternal qualities. Donor dam Tibbie 129F flat out works, yet her strongest trait is chute disposition as I've never gave donor shots to a more pleasant angus cow. Disposition on all of her progeny are the same way, easy to handle, relaxed cattle.



4DJ Mystique 415M

HDKJ 415M - 04/04/2024 - 2400492 - Angus - Black

CED	BW	WW	YW	Milk	TM	CEM	STAY	DOC
-1.0	3.7	62	107	29		10.0		20

Act. BW 81

Adj. WW 856

Adj. YW 1319

SIRE S A V HARVESTOR 0338
HILLS OF HOME HARVESTOR 2F
HF ECHO 112R

DAM BAR-H MINDBENDER 141D
BAR-H TIBBIE 129F
BAR-H TIBBIE 31C

S A V HERITAGE 6295
S A V EMBLYNETTE 7749
BT RIGHT TIME 24J
HF ECHO 187N

S SUMMIT 956
HF TIBBIE 93U
BAR-H CROSSFIRE 63A
BAR-H HOPE 1A

YG	CW	REA	MARB	FAT
	30	0.23	0.28	0.038

4DJ Mystique 415M is another high growth, performance driven, ET son of Harvester 2F x Tibbie 129F. All of the ET brothers are so consistent in phenotype and that consistency pays off big time when selling large groups of high quality, performance driven calves. These full brothers would be an absolute home run to use multiple in a large group of cows and maximize quality and consistency. The ROI would be unreal, with buyers wanting more, as their progeny will crush the scales, and offer so much natural muscle and length of body. Keep back the daughters, because they will be fantastic mommas.



4DJ Mesmerizing 416M

HDKJ 416M - 04/05/2024 - 2400491 - Angus - Black

CED	BW	WW	YW	Milk	TM	CEM	STAY	DOC
-5.0	4.2	55	93	26		7.0		18

Act. BW **103**

Adj. WW **787**

Adj. YW **1223**

SIRE S A V HARVESTOR 0338
HILLS OF HOME HARVESTOR 2F
HF ECHO 112R

DAM BAR-H MINDBENDER 141D
BAR-H TIBBIE 129F
BAR-H TIBBIE 31C

S A V HERITAGE 6295
S A V EMBLYNETTE 7749
BT RIGHT TIME 24J
HF ECHO 187N

S SUMMIT 956
HF TIBBIE 93U
BAR-H CROSSFIRE 63A
BAR-H HOPE 1A

YG	CW	REA	MARB	FAT
	31	0.28	0.29	0.045



DAM

4DJ Mesmerizing 416M is the powerhouse of the Harvester 2F x Tibbie 129F ET sons. He was always just a touch longer and stouter, even as a baby. He patterns just like the rest of his siblings, great front ends, big centered, long bodied bulls, with extra muscle and thickness that's not just extra feed. These bulls also look incredibly stout on grass! Tibbie 129F progeny excel in limited resource settings, they are very efficient for high growth cattle, and she's always border line overweight as she's so easy keeping, her daughters pack that same easy keeping look! Cattle that excel in a commercial setting, winter grazing, or in the wide open on minimal resources and look good doing it. That's why they are fast growing, profitable cattle that excel in all segments of the industry.



4DJ Meticulous Stellar 418M

HDKJ 418M - 04/05/2024 - 2399770 - Angus - Black

CED	BW	WW	YW	Milk	TM	CEM	STAY	DOC
-2.0	2.3	80	142	24		8.0		15

Act. BW **89**

Adj. WW **917**

Adj. YW **1344**

SIRE MOHNEN SUBSTANTIAL 272
SITZ STELLAR 726D
SITZ PRIDE 200B

DAM BAR-H MINDBENDER 141D
BAR-H TIBBIE 129F
BAR-H TIBBIE 31C

BENFIELD SUBSTANCE 8506
MOHNEN GLYN MAWR ELBA 1758
CONNEALY FINAL PRODUCT
SITZ PRIDE 308Y

S SUMMIT 956
HF TIBBIE 93U
BAR-H CROSSFIRE 63A
BAR-H HOPE 1A

YG	CW	REA	MARB	FAT
	70	0.76	0.24	0.011



SIRE

4DJ Meticulous Stellar 418M, a herd sire prospect with an elite phenotype, consistent with high growth and maternal aspects, and standing on a solid foot, thus, optimizing today's most economic traits. His phenotype and genotype line up perfectly! Sired by one of the industry's leading female makers, SITZ Stellar 726D matched with his elite level donor Dam, 418M is a true seed-stock quality sire, with a great disposition, tremendous fleshing ability, impressive growth curve and presence that's unique. He combines so many of today's most profitable beef industry traits, in one package, making him hard to beat. 418M is the perfect example that when you breed with the intentions of designing the most profitable females the resulting bulls will be elite. 418M is Tibbie's top son and to no surprise, it's her natural calf. Once again..... elite cows, wean off elite calves.





4DJ Mission 516M

HDKJ 516M - 26/05/2024 - 2415465 - Angus - Black

CED	BW	WW	YW	Milk	TM	CEM	STAY	DOC
7.0	1.3	57	96	17		9.0		1

Act. BW 75

Adj. WW 645

Adj. YW 1167

SIRE PEAK DOT NO DOUBT 202F
RRAR NO DOUBT 15K
RRAR TIBBIE 29H

DAM HILLS OF HOME HARVESTOR 2F
4DJ ROSEBUD 204K
4DJ ROSEBUD 903G

HOOVER NO DOUBT
PEAK DOT MIA 4A
BAR-H MINDBENDER 141D
RRAR TIBBIE 19F

S A V HARVESTOR 0338
HF ECHO 112R
HA COWBOY UP 5405C
HF ROSEBUD 246Z

YG	CW	REA	MARB	FAT
	31	0.25	0.59	0.074

4DJ Mission 516M is the product of a young Harvester 2F x Rosebud 903G daughter doing a phenomenal job. Being sired by the calving ease, curve bender No Doubt 15K, means you get all the added fleshing ability, positive carcass quality, and teat and udder improvements. Top it off with the highly appraised Rosebud momma cow and it's easy to be confident in the high quality females he will produce. Keep that exceptional look, design and fleshing ability. 516M is such a sharp profile bull and patterns just like his sire, expect great females, that are easy keepers, and high fertility.



4DJ Mars Bar 520M

HDKJ 520M - 30/05/2024 - 2415466 - Angus - Black

CED	BW	WW	YW	Milk	TM	CEM	STAY	DOC
5.0	3.6	65	114	24		7.0		4

Act. BW 87

Adj. WW 659

Adj. YW 1188

SIRE PEAK DOT NO DOUBT 202F
RRAR NO DOUBT 15K
RRAR TIBBIE 29H

DAM HILLS OF HOME HARVESTOR 2F
4DJ ROSEBUD 208K
4DJ ROSEBUD 903G

HOOVER NO DOUBT
PEAK DOT MIA 4A
BAR-H MINDBENDER 141D
RRAR TIBBIE 19F

S A V HARVESTOR 0338
HF ECHO 112R
HA COWBOY UP 5405C
HF ROSEBUD 246Z

YG	CW	REA	MARB	FAT
	55	0.44	0.49	0.064

4DJ Mars Bar 520M is another No Doubt 15K x Rosebud mating. You'll quickly notice throughout the angus bull offering that a lot of them are the product of ET work, or their Dams are all full sisters- like the Rosebuds- and bred to the same sire. We work hard to create high quality and consistency on the set of angus bulls. They are bred to be highly maternal but offer fleshing ability, be low maintenance but proven genetics that wean off big calves. Certain pedigrees excel in that environment and we proudly keep the top to use as breeding stock. No Doubt 15K exceeded all expectations and left us with a very strong set of sons but wow, oh, wow, are his daughters flat out good. Rosebud 208K has 3 other flush mate sisters, countless maternal sisters and all are model angus cows. M520 is the youngest angus bull in his group but one of the best when you take time to analyze him. Maternally driven, efficient pedigree with high production and profit traits.



RWG Maverick M313

RWG M313 - 03/24/2024 - CDGV187631 - Homo Polled - PB94 - Homo Black

CED	BW	WW	YW	Milk	TM	CEM	STAY	DOC
12	0.4	74	118	22	59	6	17	10

Act. BW 88

Adj. WW 778

Adj. YW 1268



SIRE

SIRE DLW TPG FRONTRUNNER 2510F
JKGF ALL AMERICAN J109
JKGF F109 ET

DAM BEAS 2806Z
RWG JASMINE C708
RWG YA-JT 1617

DLW TPG JACKPOT 7551B ET
DLW MS WARDON 2510Z ET
CCRO CAROLINA LEVERAGE 3214A
JKGF HATTIE B C106 ET

MCFG 94X
BEAS 7084T
PHG MR. WIZARD W27
RWG JASMINE'S TRADITION 7105

YG	CW	REA	MARB	FAT
-0.10	38.00	0.70	0.480	0.000

RWG Maverick M313 is a direct son of the foundation RWG Jasmine C708 dam, who always put a top bull into the sale group or an awesome daughter back into our program. At nearly 11 she has great udder quality and ideal teat size. Maverick is a strong mix of maternal, growth and carcass traits in one package. Added up to be a high value sire for any breeding program.



RWG Misconduct M314

RWG M314 - 03/24/2024 - CDGV187675 - Homo Polled - PB94 - Homo Black

CED	BW	WW	YW	Milk	TM	CEM	STAY	DOC
10	0.7	87	132	25	69	7	14	9

Act. BW 81

Adj. WW 802

Adj. YW 1263



GRAND SIRE

SIRE DLW TPG FRONTRUNNER 2510F
JKGF ALL AMERICAN J109
JKGF F109 ET

DAM RWG HORSE POWER H311
RWG KOKO KITTY K410
RWG KITTY E435 ET

DLW TPG JACKPOT 7551B ET
DLW MS WARDON 2510Z ET
CCRO CAROLINA LEVERAGE 3214A
JKGF HATTIE B C106 ET

SLC OUTBACK 142X
RWG ALLSTAR D510
JRI GUNG HO 282C51
RWG ZEE KITTY 2534

YG	CW	REA	MARB	FAT
-0.21	36.00	0.85	0.280	-0.020

RWG Misconduct M314 offers that touch of extra bone, hair and muscle that comes standard from his Horsepower 0311 dam. He will sire awesome sets of sons and make even stronger daughters. His dam has been on the show team short list 3 years in a row, as she has so much look and presence. A high quality "Kitty" female with ideal teat and udder system. Analyze the genomic values for growth, maternal, carcass plus indexes. A sire prospect bred to add real economic value to his progeny.





RWG Malcolm M315

RWG M315 - 03/28/2024 - CDGVI87673 - Homo Polled - PB94 - Red

CED	BW	WW	YW	Milk	TM	CEM	STAY	DOC
4	4.2	88	124	16	60	1	11	10

Act. BW 96

Adj. WW 795

Adj. YW 1257

SIRE JRI SECRETARIAT 285E78
RWG JOY RIDE J510
RWG GOODNIGHT E417

DAM RWG GUILT TRIP G418 ET
RWG GOODNIGHT K401
RWG GOODNIGHT G502

JRI SECRET SENSATION 140A43
JRI MS PRIME STAR 285Z68
JRI SANTIAGO 37C31
RWG GOODNIGHT C402

RWG EXACT COMBINATION E409
SLC PARKLAND 3IE ET
RWG EASY MONEY E305 ET
RWG GOODNIGHT E417



SIRE

YG	CW	REA	MARB	FAT
-0.07	44.00	0.67	0.170	0.000

RWG Malcolm M315 is the heavy muscled, dark red bull in the group. His sharp profile and look make him a standout. He's one of the highest growth sons of RWG Joy Ride J510. His Goodnight cow family dam is long bodied, dark red with a tidy udder and extra muscle mass. RWG Malcolm M315 would excel in a set of British based cows adding muscle and making extremely marketable progeny with that added maternal value.



RWG Mr Mikes M328

RWG M328 - 03/31/2024 - CDGVI87683 - Homo Polled - PB94 - Red

CED	BW	WW	YW	Milk	TM	CEM	STAY	DOC
10	1.3	72	111	18	53	6	18	9

Act. BW 89

Adj. WW 686

Adj. YW 1281

SIRE JRI SECRETARIAT 285E78
RWG JOY RIDE J510
RWG GOODNIGHT E417

DAM RWG HORSE POWER H311
RWG K-JUST A TOUCH K441
RWG A-TOUCH 3520

JRI SECRET SENSATION 140A43
JRI MS PRIME STAR 285Z68
JRI SANTIAGO 37C31
RWG GOODNIGHT C402

SLC OUTBACK 142X
RWG ALLSTAR D510
FLAD FLADELAND DRACULA 57Y
VG VALLEY MISS TOUCH 61T

YG	CW	REA	MARB	FAT
-0.07	32.00	0.33	0.140	-0.020

RWG Mr Mikes M328 is a personal favorite because of his overall balance & design. He's stout made, wide based, very fluid in motion, got a great front 1/3rd & an awesome head shape. This makes him a great sire choice for those of us who enjoy raising eye appealing cattle that perform and produce at a high level. His sweet dam, RWG Touch K441, is an easy fleshing, ideal sized daughter of RWG Horsepower H311 that offers great maternal instincts, added foot quality and she's as hairy as our angus & simmy cows.



DAM



SIBLING



GRAND DAM



NRCS



RWG Mojito M323

RWG M323 - 03/31/2024 - CDGV187640 - Homo Polled - PB94 - Red

CED	BW	WW	YW	Milk	TM	CEM	STAY	DOC
8	2.4	89	134	29	73	2	7	15

SIRE JRI GENERAL PATTON 213B97 ET
JRI WHERE'S THE BEEF 307H40
JRI MS ONE DERFUL 307D30

DAM JRI GUNG HO 282C51
RWG LORA G410 ET
RWG LORA E304 ET

JRI POP A TOP 197T83
JRI MS EXTRAVAGANT 213T87
JRI OPTIMIZER 148A24
JRI MS RUBY 307Y40

JRI HOSS 293A43 ET
JRI MS FRANKIE 282R11
RWG BLOWIN' MINDS 4402
SLC LORA 164Y

Act. BW **94**

Adj. WW **883**

Adj. YW **1396**

YG	CW	REA	MARB	FAT
-0.12	50.00	0.65	0.010	-0.030

RWG Mojito M323 is a true stud! Analyze his structural details, leg angles and set, length of body, shear mass and realize very few others can compete. Mojito is a 3/4 brother to RWG Loaded L418 and we feel he's in the same league. Mojitos dam, RWG Lora G410, is the most perfect teat and udder Lora female that can flat out raise great ones. Donor dam stacked maternal pedigree, sired by the dominate Where's the Beef 307H40. Top 1% breed growth, top 4% milk, top 1% TM, absolute money maker sire prospect.



RWG Money Maker M403

RWG M403 - 04/01/2024 - CDGVI87694 - Homo Polled - PB94 - Red

CED	BW	WW	YW	Milk	TM	CEM	STAY	DOC
11	1.2	78	113	31	70	3	11	14

Act. BW 92

Adj. WW 774

Adj. YW 1205

SIRE JRI GENERAL PATTON 213B97 ET
JRI WHERE'S THE BEEF 307H40
JRI MS ONE DERFUL 307D30

JRI POP A TOP 197T83
JRI MS EXTRAVAGANT 213T87
JRI OPTIMIZER 148A24
JRI MS RUBY 307Y40

DAM SLC MERV 12N
RWG HADIE'S GIRL G421 ET
RWG HADIE 3505

SLC FREEDOM 178F ET
SLC HICKORY GOAL 272K
RWG XTREME TRACTION 0521
RWG YES HADIE 1508



DAM

YG	CW	REA	MARB	FAT
-0.18	37.00	0.48	0.090	-0.060

RWG Money Maker M403 is the natural son off our donor RWG Hadie G421 and Where's the Beef 307H40. He's got that touch of added frame and length from sire and the standard extra hair. Money Maker is a nice balance of BW compared to growth curve, excelling in maternal traits. He's bred with intentions of making industry's top replacement females, with added fertility, longevity, with excellent structure and ideal teat and udders. His sons will be highly marketable through any sales ring but the daughters will be the true profit makers.



RWG Murph M406

RWG M406 - 04/02/2024 - CDGVI87693 - Homo Polled - PB94 - Black

CED	BW	WW	YW	Milk	TM	CEM	STAY	DOC
11	1.0	76	114	23	61	3	12	13

Act. BW 95

Adj. WW 809

Adj. YW 1262

SIRE JRI GENERAL PATTON 213B97 ET
JRI WHERE'S THE BEEF 307H40
JRI MS ONE DERFUL 307D30

JRI POP A TOP 197T83
JRI MS EXTRAVAGANT 213T87
JRI OPTIMIZER 148A24
JRI MS RUBY 307Y40

DAM RWG GUILT TRIP G418 ET
RWG KITTY J522
RWG FIRST CLASS KITTY F452

RWG EXACT COMBINATION E409
SLC PARKLAND 31E ET
JRI GUNG HO 282C51
RWG FIRST CLASS KITTY C502



SIRE

YG	CW	REA	MARB	FAT
-0.08	36.00	0.52	0.110	-0.010

RWG Murph M406 is an impressive son of the powerhouse Where's the Beef 307H40. His Dam is an exceptional teat and udder scored female, with generations of highly maternal mommas. Add pounds of payable product come fall, build highly maternal & productive females that last, all with one of the pens top bulls, Murph M406 a true dual purpose sire.

Lot 54

RWG Masterplan M417

RWG M417 - 04/05/2024 - CDGVI87668 - Homo Polled - PC75 - Black

CED	BW	WW	YW	Milk	TM	CEM	STAY	DOC
9	0.4	79	120	22	61	3	8	10

Act. BW 84

Adj. WW 736

Adj. YW 1244

SIRE JRI GENERAL PATTON 213B97 ET
JRI WHERE'S THE BEEF 307H40
JRI MS ONE DERFUL 307D30

DAM RWG FREE BEER F401 ET
RWG GOODNIGHT J433
RWG GOODNIGHT G508

JRI POP A TOP 197T83
JRI MS EXTRAVAGANT 213T87
JRI OPTIMIZER 148A24
JRI MS RUBY 307Y40

VISION UNANIMOUS 1418
SLC LORA 164Y
RWG ENTITY E308 ET
RWG YOUR GOODNIGHT I539

YG	CW	REA	MARB	FAT
-0.15	62.00	0.79	0.000	-0.050

RWG Masterplan M417 is a more mid framed son of Where's the Beef 307H40, he's as deep bodied and dark red as you can make one. Backed by the same cow family as our 2025 National Champion Female. Highly recommended to use this sire prospect to build a cow herd with high value females. He will make efficient, fast growing, moderate framed progeny that are economically driven. Get all the payable pounds industry offers without the need for monster framed mature cows that are hard doing. Masterplan M417, built for the modern beef industry.



Lot 55

RWG Milwaukee M419

RWG M419 - 04/06/2024 - CDGVI87707 - Homo Polled - PB94 - Red

CED	BW	WW	YW	Milk	TM	CEM	STAY	DOC
13	-0.2	62	95	19	50	7	16	10

Act. BW 92

Adj. WW 718

Adj. YW 1200

SIRE RWG HORSE POWER H311
RWG KASH FLOW K444
RWG DAISY E447

DAM JRI SECRETARIAT 285E78
RWGC PARKLAND H413 ET
SLC PARKLAND 31E ET

SLC OUTBACK 142X
RWG ALLSTAR D510
RWG RIGHT COMBINATION C506
RWG DAISY XPRESS 2401

JRI SECRET SENSATION 140A43
JRI MS PRIME STAR 285Z68
VV ZAKE 114Z
SLC PARKLAND 220U

YG	CW	REA	MARB	FAT
-0.06	28.00	0.45	0.210	0.000

RWG Milwaukee M419 was a strategic mating, sired by the 2024 Draft Picks high seller RWG Kash Flow K444. He's got his sires extra mass, fleshing ability, hair and powerful presence. His dam is a tanky JRI Secretariat 285E78 daughter from the famous SLC Parkland 31E donor. Milwaukee M419 is a stacked pedigree with an impressive phenotype. He should be high on anyone's list looking to upgrade the red herd bull pen.



GRAND DAM



SIRE





NRCS



MAT.SIB



MAT.SIB



DAM



RWG Canadian Money M330 ET

RWG M330 - 03/31/2024 - CDGV187695 - Homo Polled - PB94 - Homo Black

CED	BW	WW	YW	Milk	TM	CEM	STAY	DOC
7	1.2	90	134	28	72	7	18	13

SIRE DLW TPG FRONTRUNNER 2510F
JKGF ALL AMERICAN J109
JKGF F109 ET

DAM BEAS 2806Z
RWG KITTY'S DREAM D526
RWG ROXY KITTY X 0301

YG	CW	REA	MARB	FAT
-0.19	47.00	0.99	0.460	-0.010

DLW TPG JACKPOT 7551B ET
DLW MS WARDON 2510Z ET
CCRO CAROLINA LEVERAGE 3214A
JKGF HATTIE B C106 ET

MCFG 94X
BEAS 7084T
RWG TOTALLY-EXPOSED 7918 ET
RWG ROXY KITTY 5030

Act. BW 84

Adj. WW 863

Adj. YW 1388

RWG Canadian Money M330 ET, plain and simply the most elite son of All American J109. We strategically used All American on our absolute best maternal females in our breeding program. No surprise the breeds most influential female, RWG Kitty's Dream 6526, would, again, make the right son to move forward with. This mating takes all the growth & carcass values from sire and dramatically adds back in the refinement of maternal details from a top growth, maternal and carcass Donor. Stamping the consistency of all traits- RWG Canadian Money M330 has no doubt got the data to be elite in the modern beef industry. It will be his extreme easy fleshing, absolute tank, huge-middled design that will set him apart. He's also one of the most chill bulls in the pen and when you add it all up, very easily the son that moves the pedigree forward making his sire obsolete. Canadian Money M330 is a real life beast, Genomic Powerhouse, backed by an elite donor dam. Was used in 2025 on a select group of females @ RWG.

Selling 1/2 possession, 1/2 semen interest with the option to double and own the whole bull.



RWG Monopoly Money M425 ET

RWG M425 - 04/06/2024 - CDGV187697 - Homo Polled - PB94 - Homo Black

CED	BW	WW	YW	Milk	TM	CEM	STAY	DOC
12	-1.5	70	109	28	62	9	15	10

Act. BW **84**

Adj. WW **737**

Adj. YW **1307**



SIRE

SIRE DLW TPG FRONTRUNNER 2510F
JKGf ALL AMERICAN J109
JKGf F109 ET

DAM BEAS 2806Z
RWG KITTY'S DREAM D526
RWG ROXY KITTY X 0301

DLW TPG JACKPOT 7551B ET
DLW MS WARDON 2510Z ET
CCRO CAROLINA LEVERAGE 3214A
JKGf HATTIE B C106 ET

MCFG 94X
BEAS 7084T
RWG TOTALLY-EXPOSED 7918 ET
RWG ROXY KITTY 5030

YG	CW	REA	MARB	FAT
-0.20	38.00	0.95	0.480	-0.010

RWG Monopoly Money M425 is the elite calving ease option of the 3 flush brothers in the sale. He's flat shouldered, clean in his skeleton, long bodied and smooth in his joint work. He's such a great option to reduce BW, increase both weaning & yearling weights, while adding milk and carcass all in one sire choice. Monopoly Money M425 sets up to be one of the best sire prospects on offer from a pure beef production standpoint. A high genomic value sire with an even stronger ROI.



RWG Mix It Up M428 ET

RWG M428 - 04/08/2024 - CDGV187698 - Homo Polled - PB94 - Homo Black

CED	BW	WW	YW	Milk	TM	CEM	STAY	DOC
15	-1.2	76	117	28	66	9	19	12

Act. BW **89**

Adj. WW **852**

Adj. YW **1336**



DAM

SIRE DLW TPG FRONTRUNNER 2510F
JKGf ALL AMERICAN J109
JKGf F109 ET

DAM BEAS 2806Z
RWG KITTY'S DREAM D526
RWG ROXY KITTY X 0301

DLW TPG JACKPOT 7551B ET
DLW MS WARDON 2510Z ET
CCRO CAROLINA LEVERAGE 3214A
JKGf HATTIE B C106 ET

MCFG 94X
BEAS 7084T
RWG TOTALLY-EXPOSED 7918 ET
RWG ROXY KITTY 5030

YG	CW	REA	MARB	FAT
-0.01	37.00	0.66	0.450	0.040

RWG Mix it Up M428 is a real curve bender, with high calving ease, super low BW, top 10% growth values, highly maternal with all of the extras like high stay-ability & carcass. Mix it Up M428 is the most balanced bull out of the flush, deep in his chest, nice muscle shape, improved head design, and balanced on the move. He took so many of the positive phenotypic traits of his breed leading dam. Mix it Up M428 exceeds expectations in every category, a bull bred for profitability.





RWG Mega M420

RWG M420 - 04/06/2024 - CDGV187672 - Homo Polled - PC75 - Red

CED	BW	WW	YW	Milk	TM	CEM	STAY	DOC
8	2.0	78	117	21	60	1	13	14

Act. BW 88

Adj. WW 741

Adj. YW 1178

SIRE JRI GENERAL PATTON 213B97 ET
JRI WHERE'S THE BEEF 307H40
JRI MS ONE DERFUL 307D30

DAM RWG FREE BEER F401 ET
RWG JASMINE J454
RWG JASMINE G447

JRI POP A TOP 197T83
JRI MS EXTRAVAGANT 213T87
JRI OPTIMIZER 148A24
JRI MS RUBY 307Y40

VISION UNANIMOUS 1418
SLC LORA 164Y
RWG RIGHT COMBINATION C506
RWG JASMINE C711



SIRE

YG	CW	REA	MARB	FAT
-0.05	45.00	0.46	0.340	-0.020

RWG Mega M420 is easy to find in pen, this Where's the Beef 307H40 son is dark red, clean in profile, square and stout. Lead by the Jasmine cow family, his dam J454 has been a great young cow in production with notable teat and udder quality. This blend of phenotype and pedigree really worked! RWG Mega M420 offers added early growth to capture top calf values, yet will maintain ideal mature cow size. An added bonus... he's a high-Quality Grade bull in a positive phenotype package.



RWG Mystery Man M429

RWG M429 - 04/09/2024 - CDGV187687 - Homo Polled - PB94 - Red

CED	BW	WW	YW	Milk	TM	CEM	STAY	DOC
15	-1.2	60	88	19	49	7	13	11

Act. BW 84

Adj. WW 795

Adj. YW 1260

SIRE JRI SECRETARIAT 285E78
RWG JOY RIDE J510
RWG GOODNIGHT E417

DAM RWG HORSE POWER H311
RWG PARKLAND K505
SLC PARKLAND 5E

JRI SECRET SENSATION 140A43
JRI MS PRIME STAR 285Z68
JRI SANTIAGO 37C31
RWG GOODNIGHT C402

SLC OUTBACK 142X
RWG ALLSTAR D510
SLC VELOCITY 14C
SLC PARKLAND 220U



GRAND DAM



SIRE

YG	CW	REA	MARB	FAT
-0.07	24.00	0.38	0.150	-0.010

RWG Mystery Man M429 is the dark red curve bender- so much length & muscle, yet as sharp profiled and clean as you can make one. His dam is a donor and full sister to herd sire RWG Power Lift L414, who first progeny are highly impressive. Mystery Man's dam, Parkland K505, has exceptional teat/udder and was such an easy choice to be in the donor pen, with a large group of ET progeny due this coming April. Mystery Man posts notable calving ease, negative BW, solid growth in a dark red package.

Lot 61

RWG Myth M432

RWG M432 - 04/10/2024 - CDGV187654 - Homo Polled - PB94 - Black

CED	BW	WW	YW	Milk	TM	CEM	STAY	DOC
9	1.5	83	130	24	66	2	11	11

Act. BW 93

Adj. WW 750

Adj. YW 1316



SIBLING

SIRE JRI GENERAL PATTON 213B97 ET
JRI WHERE'S THE BEEF 307H40
JRI MS ONE DERFUL 307D30

DAM RWG ENTITY E308 ET
RWG GOODNIGHT G508
RWG YOUR GOODNIGHT I539

JRI POP A TOP197T83
JRI MS EXTRAVAGANT 213T87
JRI OPTIMIZER 148A24
JRI MS RUBY 307Y40

RWG BLOWIN' MINDS 4402
SLC LORA 164Y
RWG TEXAS WORTH 9223
ULL TWILIGHT 5T ET

YG	CW	REA	MARB	FAT
-0.15	52.00	0.70	0.040	-0.040

RWG Myth M432 is my personal favorite black son of Where's the Beef 307H40 to date. His muscle mass, length of body and overall balance sets him apart. His dam is a pasture favorite, she's got such a sharp profile, is awesome in terms of her shoulder and fore rib, with loads of capacity. Just like the cow family, she's all maternal, yet powerful with an ideal udder. Highly productive- always excelling in fertility. Myth M432 is an elite individual with the cow power to make a long-lasting impact in industry.



Lot 62

RWG Moonshine M433

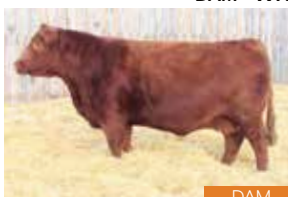
RWG M433 - 04/10/2024 - CDGV187633 - Homo Polled - PB94 - Red

CED	BW	WW	YW	Milk	TM	CEM	STAY	DOC
9	2.0	77	117	28	67	3	12	12

Act. BW 91

Adj. WW 941

Adj. YW 1436



DAM

SIRE JRI GENERAL PATTON 213B97 ET
JRI WHERE'S THE BEEF 307H40
JRI MS ONE DERFUL 307D30

DAM RWG BLOWIN' MINDS 4402
RWG LORA E304 ET
SLC LORA 164Y

JRI POP A TOP197T83
JRI MS EXTRAVAGANT 213T87
JRI OPTIMIZER 148A24
JRI MS RUBY 307Y40

BEAS 2806Z
RWG ZEE KITTY 2534
SLC MASTER PLAN 191U
SLC LORA C 299P

YG	CW	REA	MARB	FAT
-0.23	41.00	0.75	0.000	-0.050

RWG Moonshine M433 is as deep bodied as they come, lots of rib shape, added bone mass and that chill easy going personality. His maternal traits will be off the charts and he will excel in improving teat and udder quality. A high growth, big capacity bull that will leave hairy, deep, efficient progeny. All backed by the Lora E304 donor.





RWG Miami M441

RWG M441 - 04/15/2024 - CDGVI87679 - Homo Polled - PB94 - Red

CED	BW	WW	YW	Milk	TM	CEM	STAY	DOC
17	-2.7	52	73	14	40	5	18	10

Act. BW 81

Adj. WW 747

Adj. YW 1163

SIRE JRI SECRETARIAT 285E78
RWG JOY RIDE J510
RWG GOODNIGHT E417

DAM DRT LONESOME CAIRO 230H
RWG BLACK CAT K433
RWG BLACK CAT H471

JRI SECRET SENSATION 140A43
JRI MS PRIME STAR 285Z68
JRI SANTIAGO 37C31
RWG GOODNIGHT C402

DVE DAVIDSON MACON 111C
DRT LONESOME DANIELLE 150F
RWG FAKE ID F460
RWG BLACKCAT C520 ET



SIRE



MAT.SIB

YG	CW	REA	MARB	FAT
0.00	16.00	0.12	0.280	0.010

RWG Miami M441, I appreciate this bull every time I do a pen check. His profile, correctness, plus length and muscle, off a first calf momma. He has excelled in low BW and accelerated growth, while his dam has added milking ability and maintains a refined, short teat. Her cow family keeps making the good ones every year. Miami M441 could work as an ideal heifer bull option or on any set of females. Keep back these daughters.





RWG Maxwell M443

RWG M443 - 04/15/2024 - CDGV187660 - Homo Polled - PB94 - Black

CED	BW	WW	YW	Milk	TM	CEM	STAY	DOC
9	4.4	91	147	19	65	6	15	12

Act. BW 97

Adj. WW 791

Adj. YW 1362

SIRE RWG HORSE POWER H311
RWG KASH FLOW K444
RWG DAISY E447

DAM RWG EXACT COMBINATION E409
RWG KITTY H468 ET
RWG KITTY E411

SLC OUTBACK 142X
RWG ALLSTAR D510
RWG RIGHT COMBINATION C506
RWG DAISY XPRESS 2401

RWG RIGHT COMBINATION C506
RWG HADIE 3505
RWG BUSTIN' STONES 4603
RWG ROXY KITTY X 0301

YG	CW	REA	MARB	FAT
-0.09	57.00	0.76	0.050	-0.010



RWG Maxwell M443 the big-time performance, powerhouse of the sale. He will add extra length, mass, bone & solid structure. Plain and simply the bull that can easily outperform industry's top growth bulls in any breed. He's been a standout and favorite since the day he was born- all fuzzy and dried off, you just knew he was gonna be a good one! We like this pedigree so much we kept back his 3/4 brother as a herd sire for ourselves. Maxwell is one of the best haired bulls in the group and was exceptionally hairy as a calf. Backed by the best in production daughter of the famous donor Kitty 7411. Maxwell is the perfect bull to power up a set of females, but he's not all terminal, keep back his daughters and they will be unreal powerhouses. Easily one of the breeds best performance sires to sell in 2026!



RWG Manhattan M445

RWG M445 - 04/16/2024 - CDGV187642 - Homo Polled - PB94 - Red

CED	BW	WW	YW	Milk	TM	CEM	STAY	DOC
8	4.2	96	142	24	72	2	14	16

Act. BW 98

Adj. WW 827

Adj. YW 1356

SIRE JRI GENERAL PATTON 213B97 ET
JRI WHERE'S THE BEEF 307H40
JRI MS ONE DERFUL 307D30

DAM RWG EXACT COMBINATION E409
RWG GLAMOROUS KITTY G415 ET
RWG KITTY'S DREAM D526

JRI POP A TOP 197T83
JRI MS EXTRAVAGANT 213T87
JRI OPTIMIZER 148A24
JRI MS RUBY 307Y40

RWG RIGHT COMBINATION C506
RWG HADIE 3505
BEAS 2806Z
RWG ROXY KITTY X 0301

YG	CW	REA	MARB	FAT
-0.03	59.00	0.70	0.060	0.000



GRANDDAM

RWG Manhattan M445, he's the big centered all gas, son of Where's the Beef 307H40. He's always been the "Beef" son with more muscle shape, bone, overall width and growth. He's truly elite level growth and an ideal option to make hairy stout progeny that are admired in sales rings across the industry. With correct industry metrics his added growth and lbs pay for itself in a hurry. If you need some extra performance, think Manhattan M445!





RWG Memphis M446

RWG M446 - 04/20/2024 - CDGVI87689 - Homo Polled - PB94 - Black

CED	BW	WW	YW	Milk	TM	CEM	STAY	DOC
12	1.7	76	110	27	64	5	19	13

Act. BW 91

Adj. WW 770

Adj. YW 1257

SIRE JRI SECRETARIAT 285E78
RWG JOY RIDE J510
RWG GOODNIGHT E417

DAM RWG FROSTY NUGGET H408 ET
RWG KITTY K523
RWG KITTY E411

JRI SECRET SENSATION 140A43
JRI MS PRIME STAR 285Z68
JRI SANTIAGO 37C31
RWG GOODNIGHT C402

JRI SECRETARIAT 285E78
RWG KITTY'S FANTASY F516
RWG BUSTIN' STONES 4603
RWG ROXY KITTY X 0301



SIRE

YG	CW	REA	MARB	FAT
0.06	23.00	0.12	0.410	0.020

RWG Memphis M446 is a balanced son of Joy Ride 1510 and from a young Kitty 7411 daughter that's quickly turning heads. Her udder quality is exceptional, she's average in frame but big time in production. With her first two sons posting an average WW ratio of 113. RWG Memphis M446 will keep frame scores in check and efficient sized daughters, but offer added growth from birth to weaning. Maximizing gain for programs that sell in the fall and keep back replacement females. Memphis M446 is a solid choice in a wide range of cross breeding options.



RWG Magnum M448

RWG M448 - 04/21/2024 - CDGVI86656 - Homo Polled - PB94 - Black

CED	BW	WW	YW	Milk	TM	CEM	STAY	DOC
8	1.0	88	129	24	68	6	13	10

Act. BW 84

Adj. WW 885

Adj. YW 1449

SIRE SLC OUTBACK 142X
RWG HORSE POWER H311
RWG ALLSTAR D510

DAM RWG GRAND PLAN G420 ET
RWG PARKLAND J435
SLC PARKLAND 31E ET

CES DECKA OUTBACK 75S
SFL SLC SUE 325P
RWG WAR ADMIRAL 2528
PHG ALLSTAR A71

RWG EXACT COMBINATION E409
RWG KITTY'S DREAM D526
VV ZAKE 114Z
SLC PARKLAND 220U



DAM

YG	CW	REA	MARB	FAT
-0.17	62.00	1.03	0.090	-0.020

RWG Magnum M448 is the direct Horsepower 0311 son that we utilized in 2025 as a walking sire, due to his reduced BW and above average growth. High maternal traits, will come standard as Horsepower 0311 set the bar for daughters in production. Plus Magnum's dam is one of our top Parkland females, she's extremely easy fleshing, ideal udder, highly productive, plus she's long bodied and classy by design. RWG Magnum M448 is such an easy-going bull and easy to handle making him just that much more of an attractive package. Great sire option for British based females.



RWG Dragon Myths M454 ET

RWG M454 - 04/26/2024 - CDGVI87699 - Homo Polled - PB94 - Red

CED	BW	WW	YW	Milk	TM	CEM	STAY	DOC
10	0.3	62	94	20	51	4	8	11

Act. BW 104

Adj. WW 858

Adj. YW 1427

SIRE SLC OUTBACK 89Y
FRL FIR RIVER DRAGON
FRL FIR RIVER MS CLASS

DAM JRI SECRETARIAT 285E78
RWG BLACK CAT H476
RWG CHEROKEE BLACKCAT C413

CES DECKA OUTBACK 755
SLC LADY 238U
OHF WORLD CLASS 16W
FRL FIR RIVER BREA 234X ET

JRI SECRET SENSATION 140A43
JRI MS PRIME STAR 285Z68
RWG WAR ADMIRAL 2528
RWG BLACKCAT 0410

YG	CW	REA	MARB	FAT
-0.23	44.00	0.90	0.010	-0.040



DAM

RWG Dragon Myths M454 is the result of flushing our 2022 CWA Agribition Champion female to the outcross FRL Dragon 104D Bull, resulting in 3 bulls being part of the 2026 sale offering. M454 is long bodied, clean fronted, with enough muscle mass. He was a fuzzy calf and has maintained that into his mature look, with the expectation he will add hair to his progeny. M454 offers a balanced set of EPDs to match his phenotype making his predictability high. A unique pedigree, be sure to check out M454.



RWG Magic Dragon M456 ET

RWG M456 - 04/28/2024 - CDGVI87700 - Homo Polled - PB94 - Red

CED	BW	WW	YW	Milk	TM	CEM	STAY	DOC
10	-0.8	62	91	20	51	5	9	10

Act. BW 96

Adj. WW 788

Adj. YW 1350

SIRE SLC OUTBACK 89Y
FRL FIR RIVER DRAGON
FRL FIR RIVER MS CLASS

DAM JRI SECRETARIAT 285E78
RWG BLACK CAT H476
RWG CHEROKEE BLACKCAT C413

CES DECKA OUTBACK 755
SLC LADY 238U
OHF WORLD CLASS 16W
FRL FIR RIVER BREA 234X ET

JRI SECRET SENSATION 140A43
JRI MS PRIME STAR 285Z68
RWG WAR ADMIRAL 2528
RWG BLACKCAT 0410

YG	CW	REA	MARB	FAT
-0.14	41.00	0.75	-0.010	-0.010



DAM

RWG Magic Dragon M456 is out of the 2022 CWA Agribition Champion female and FRL Dragon 104D making him outcross for most of our customer base. He's got all that added length of body and thick hair his sire was known for. He offers a touch of extra frame and bone to add some payable pounds yet keep the calving ease in check with his flat shoulder design. Long, stout & hairy, plus a fresh pedigree!





RWG Majestic Dragon M459 ET

RWG M459 - 04/29/2024 - CDGV187701 - Homo Polled - PB94 - Red

CED	BW	WW	YW	Milk	TM	CEM	STAY	DOC
7	1.1	72	108	20	56	3	8	15

Act. BW 102

Adj. WW 836

Adj. YW 1314

SIRE **FRL FIR RIVER DRAGON**
SLC OUTBACK 89Y
FRL FIR RIVER MS CLASS

DAM **RWG BLACK CAT H476**
JRI SECRETARIAT 285E78
RWG CHEROKEE BLACKCAT C413

CES DECKA OUTBACK 75S
SLC LADY 238U
OHF WORLD CLASS 16W
FRL FIR RIVER BREA 234X ET

JRI SECRET SENSATION 140A43
JRI MS PRIME STAR 285Z68
RWG WAR ADMIRAL 2528
RWG BLACKCAT 0410

YG	CW	REA	MARB	FAT
-0.20	49.00	0.86	-0.080	-0.040

RWG Majestic Dragon M459 is the most jet necked, sharp fronted of the et full brothers. Backed by an awesome cow who was the 2022 CWA Champion female. He's long bodied, stout over his top, with lots of loin and offers all that added hair from his sire FRL Dragon 104D. If you're hunting for a bull that can add that extra look into his progeny, make them hairy and high growth, you've found him. He will sire progeny that top values at sale time.



DAM



RWG Michigan M462

RWG M462 - 04/30/2024 - CDGV187674 - Homo Polled - PB94 - Black

CED	BW	WW	YW	Milk	TM	CEM	STAY	DOC
12	-0.1	74	108	23	60	6	16	11

Act. BW 81

Adj. WW 920

Adj. YW 1393

SIRE **RWG JOY RIDE J510**
JRI SECRETARIAT 285E78
RWG GOODNIGHT E417

DAM **RWG PARKLAND K406**
RWG HORSE POWER H311
RWG PARKLAND G414 ET

JRI SECRET SENSATION 140A43
JRI MS PRIME STAR 285Z68
JRI SANTIAGO 37C31
RWG GOODNIGHT C402

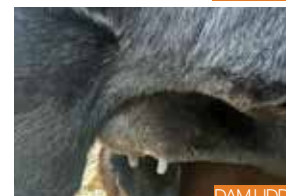
SLC OUTBACK 142X
RWG ALLSTAR D510
RWG EXACT COMBINATION E409
SLC PARKLAND 31E ET

YG	CW	REA	MARB	FAT
-0.04	32.00	0.39	0.370	-0.010

RWG Michigan M462 is such an elite Jr sire option that he's one of the bulls that's truly hard to sell. His dam is the most phenotypically unique purebred cow on our place! She is stout, big bodied and the most correct on the ground. She was the 2024 undefeated National Champion Female. Commended for her power and mass while maintaining a feminine front and head and then matching an absolutely perfect udder which truly her apart. Michigan M462 is sired by Joy Ride, and is one of his very best sons ever produced. He could easily replace sire and improve upon what he did in industry. Michigan is deep, square, stout, clean headed and great structured. Elite level herd sire option from one of the breeds most elite young cows.



DAM



DAM UDDER



RWG M504

RWG M504 - 05/06/2024 - CDGVI89499 - Homo Polled - BA50 - Red

CED	BW	WW	YW	Milk	TM	CEM	STAY	DOC
14	-1.8	65	101	31	64	4	13	15

Act. BW 89

Adj. WW 727

Adj. YW 1173

SIRE **PIE QUARTERBACK 0109**
PIE QUARTERBACK 789
PIE PRIMETIME VERNICE 708

DAM **CMR SUNSHINE 94D**
KKC NOBILITY 123Y
CMR 13A

PIE STOCKMAN 4051
PIE RUBY 520
5L DEFENDER 560-30Z
PIE PRIMETIME VERNICE 561

KKC COMMANDER 51W
KKC MS GRAND 64L
DCH HILLE U145 UPPERCUT
DCH HILLE Y140

YG	CW	REA	MARB	FAT
-0.28	15.00	0.53	0.270	-0.060



DAM

RWG M504 is from the exciting Donor CMR Sunshine 94D and sired by the calving ease specialist Quarter Back 0109. Combined to make one of the first bulls people ask about when the tour. It's easy to see why, he's deep in body and color, stout made, level hip design, great haired and great disposition. He's always front and center in the group and so easy moving. His momma's natural calf and she's certainly still got it in her to raise a good one for an aged donor. Sunshine 94D is one of the most stand out females we've purchased and this elevates her son to be a great jr sire option. The best bulls are always backed by the strongest cows.



RWG Mass M508

RWG M508 - 05/10/2024 - CDGVI87657 - Homo Polled - PB94 - Black

CED	BW	WW	YW	Milk	TM	CEM	STAY	DOC
14	-0.8	65	93	24	57	6	17	8

Act. BW 95

Adj. WW 796

Adj. YW 1258

SIRE **RWGW KLAUS K419**
RWG HORSE POWER H311
RWG BLACKCAT E430

DAM **RWG HADIE H429 ET**
RWG BLOWIN' MINDS 4402
RWG HADIE 3505

SLC OUTBACK 142X
RWG ALLSTAR D510
JRI GUNG HO 282C51
RWG BLACKCAT C520 ET

BEAS 2806Z
RWG ZEE KITTY 2534
RWG XTREME TRACTION 0521
RWG YES HADIE 1508

YG	CW	REA	MARB	FAT
-0.17	26.00	0.61	-0.080	-0.020



SIRE

RWG Mass M508, just like his name, he's all mass, big time capacity, loads of muscle all on an extremely solid structure. He's square and stout from every angle, highly maternal, with generation after generation of teat and udder quality. He's backed by highly productive cows that always wean off massive calves. He's a mid-range in terms of frame score but will push down scales and make easy keeping daughters, with added fertility and lots of longevity. A true maternal powerhouse with added growth and muscle.





RWG Canadian Man M515

RWG M515 - 05/23/2024 - CDGV187709 - Homo Polled - PB94 - Black

CED	BW	WW	YW	Milk	TM	CEM	STAY	DOC
13	0.2	65	86	21	54	5	20	10

Act. BW 83

Adj. WW 792

Adj. YW 1232

SIRE RWG GRAND PLAN G420 ET
SLC PARKLAND 31E ET

DAM DRT LONESOME CAIRO 230H
RWGC PARKLAND K417
RWGC PARKLAND H413 ET

RWG EXACT COMBINATION E409
RWG KITTY'S DREAM D526
VV ZAKE 114Z
SLC PARKLAND 220U

DVE DAVIDSON MACON 111C
DRT LONESOME DANIELLE 150F
JRI SECRETARIAT 285E78
SLC PARKLAND 31E ET

YG	CW	REA	MARB	FAT
-0.24	24.00	0.50	0.380	-0.060

RWG Canadian Man M515 is a great low birth weight, heifer bull option who's a blend of strong maternal genetics, with a double shot of the famous Parkland 31E donor. His dam is a sweet moderate momma, with an elite quality offer, excellent fleshing ability and great feet. He's sired by the best RWG Grand Plan G420 son we ever raised, he was hairy, smooth made with adequate growth for a calving ease option. If you're looking for a high quality heifer bull look no further.



RWG Major M519

RWG M519 - 05/30/2024 - CDGV187639 - Homo Polled - PB94 - Red

CED	BW	WW	YW	Milk	TM	CEM	STAY	DOC
10	1.4	77	110	22	60	6	16	12

Act. BW 97

Adj. WW 856

Adj. YW 1254

SIRE JRI SECRETARIAT 285E78
RWG JOY RIDE J510
RWG GOODNIGHT E417

DAM RWG EXACT COMBINATION E409
RWG KITTY'S GRACE G402 ET
RWG KITTY'S DREAM D526

JRI SECRET SENSATION 140A43
JRI MS PRIME STAR 285Z68
JRI SANTIAGO 37C31
RWG GOODNIGHT C402

RWG RIGHT COMBINATION C506
RWG HADIE 3505
BEAS 2806Z
RWG ROXY KITTY X 0301



DAM

YG	CW	REA	MARB	FAT
-0.04	33.00	0.45	0.200	0.000

RWG Major M519 must plain and simply be the deepest made son of Joy Ride 1510 and one of his top sons to date. Stout made, with Joy Rides clean front 1/3rd profile. Major M519 is backed by the Kitty cow family who is known for added body mass, high quality sons and daughters that make exceptional momma cows. RWG Major M519 will be easy to find in the pen and is one of the top sire choices on offer. Deep & Soggy!



RWG Beer Money M601

RWG M601 - 06/01/2024 - CDGV187659 - Homo Polled - PB88 - Black

CED	BW	WW	YW	Milk	TM	CEM	STAY	DOC
8	2.0	72	110	20	56	5	14	12

Act. BW 91

Adj. WW 797

Adj. YW 1246



SIRE

SIRE RWG KASH FLOW K444
RWG HORSE POWER H311
RWG DAISY E447

DAM RWG HAPPY FLOWER H458
RWG FREE BEER F401 ET
RWG DESTINY'S FLOWER 8201

SLC OUTBACK 142X
RWG ALLSTAR D510
RWG RIGHT COMBINATION C506
RWG DAISY XPRESS 2401

VISION UNANIMOUS 1418
SLC LORA 164Y
GREAT DIVIDE 503C
RWG DESTINY D518

YG	CW	REA	MARB	FAT
-0.05	47.00	0.51	0.360	-0.020

RWG Beer Money M601 is the perfect mix of Kash Flow K444 & Free Beer F401 thus "Beer Money". He's stout and wide based, with lots of extra shape and muscle mass. He's naturally a very deep bodied bull, lots of added capacity, with clean lines and travels with ease. Backed by strong maternal genetics, expect his progeny to have good vigor, fast growth patterns, be very hairy and easy to grow and develop.



RWG Mike M602

RWG M602 - 06/01/2024 - CDGV187708 - Polled - PB88 - Black

CED	BW	WW	YW	Milk	TM	CEM	STAY	DOC
12	-0.7	70	100	20	55	6	14	12

Act. BW 89

Adj. WW 780

Adj. YW 1234

SIRE RWG KEEP IT COUNTRY K451
RWG HORSE POWER H311
RWG LORA E304 ET

DAM RWG DARK WINTER J308
EGL LIFELINE B101
RWG C GLORY WINTER G506

SLC OUTBACK 142X
RWG ALLSTAR D510
RWG BLOWIN' MINDS 4402
SLC LORA 164Y

S A V FINAL ANSWER 0035
EGL ESTELLE X014
RWG RIGHT COMBINATION C506
RWG DARK WINTER D425

YG	CW	REA	MARB	FAT
-0.20	25.00	0.67	0.190	-0.020

RWG Mike M602 is a direct RWG Keep it Country son- who is the mix of Horsepower 0311 and Lora 7304 therefore leading you to growth, length and maternal values. Mike's dam, Dark Winter 1308 is a direct EGL Lifeline daughter that is a extremely sharp looking young cow. With her added calving ease, it makes RWG Mike M602 a well-balanced sire with reduced birth weight, added growth, strong maternal and added carcass values as a bonus.





YORK *Mister* 270M404

YORK M404 - 04/02/2024 - CDGV187719 - Homo Polled - PB88 - Red

CED	BW	WW	YW	Milk	TM	CEM	STAY	DOC
11	-1.6	62	88	14	44	5	13	10

SIRE JRI SECRETARIAT 285E78
RWG JOY RIDE J510
RWG GOODNIGHT E417

DAM RWG GUILT TRIP G418 ET
YORK 270K93 ET
JRI MS DAZZLER 270X872

YG	CW	REA	MARB	FAT
-0.14	32.00	0.53	0.220	-0.030

JRI SECRET SENSATION 140A43
JRI MS PRIME STAR 285Z68
JRI SANTIAGO 37C31
RWG GOODNIGHT C402

RWG EXACT COMBINATION E409
SLC PARKLAND 31E ET
JRI POP A TOP 197T83
JRI MS BLUE BELLE 270S772 ET

Act. BW **77**

Adj. WW **657**

Adj. YW **1152**

YORK Mister 270M404 is backed by the great 270X872 donor. Then layered with 2 generations of easy fleshing dark red sires to make Mister 270M404. He's a moderate, efficient bull, with lots of natural thickness, and a very marketable dark color to add value to most breeding strategies. Mister 270M404 is a sharp looking Jr herd sire that is easy to find and appreciate in the pen. Another one of Joy Rides top sons and from a really strong cow family.



RWG Max M604

RWG M604 - 06/07/2024 - CDGVI87643 - Homo Polled - PB94 - Red

CED	BW	WW	YW	Milk	TM	CEM	STAY	DOC
4	0.3	75	108	28	65	4	12	11

Act. BW 97

Adj. WW 907

Adj. YW 1351



DAM

SIRE **RWG KEEP IT COUNTRY K451**
RWG HORSE POWER H311
RWG LORA E304 ET

DAM **RWG KITTY'S GLOW G423 ET**
RWG EXACT COMBINATION E409
RWG KITTY'S DREAM D526

SLC OUTBACK 142X
RWG ALLSTAR D510
RWG BLOWIN' MINDS 4402
SLC LORA 164Y

RWG RIGHT COMBINATION C506
RWG HADIE 3505
BEAS 2806Z
RWG ROXY KITTY X 0301

YG	CW	REA	MARB	FAT
-0.15	50.00	0.70	-0.010	-0.040

RWG Max M604 is a big stout made, high growth sire that will really add pounds to his calf crop. Sired by Keep it Country 2451 who adds body length and muscle mass. Plus, his dam is a high growth, long bodied female, that seems to impress us more with every calf she raises. Ideal cattle when looking to make big time impact in the sale barn or feed yard with long bodied, fast growing cattle that buyers search for. RWG Max M604 is a real profit in mind sire prospect that checks so many boxes for industry's demand for growth and power yet maintaining highly maternal characteristics.



RWG Mastermind M607

RWG M607 - 06/24/2024 - CDGVI87644 - Homo Polled - PB94 - Red

CED	BW	WW	YW	Milk	TM	CEM	STAY	DOC
4	2.5	84	126	24	66	1	11	13

Act. BW 93

Adj. WW 787

Adj. YW 1230

SIRE **JRI WHERE'S THE BEEF 307H40**
JRI GENERAL PATTON 213B97 ET
JRI MS ONE DERFUL 307D30

DAM **RWG KITTY'S GEM G409 ET**
RWG RIGHT COMBINATION C506
RWG KITTY'S DREAM D526

JRI POP A TOP 197T83
JRI MS EXTRAVAGANT 213T87
JRI OPTIMIZER 148A24
JRI MS RUBY 307Y40

RWG WAR ADMIRAL 2528
SLC LORA 164Y
BEAS 2806Z
RWG ROXY KITTY X 0301

YG	CW	REA	MARB	FAT
-12	50.00	0.64	-0.050	-0.030

RWG Mastermind M607 is a Where's the Beef 307H40 x Kitty 9409 making him a full sib to the Junior National Heifer Calf Champion, maternal brother to multiple sires who work in seed stock & commercial programs with great results. Kitty's Gem 9409 has accomplished so much in a short window with progeny quality. Mastermind M607 is another example of how productive she has been, he's built right, stout, hairy, muscle mass- a great continental bull with enough look to top the auction rings in the fall. High growth keeps boys wanting more and his great pedigree add value to his progeny.





NRCS



SIRE



SIRE FULL SIB



GRANDDAM



RWG *Mighty Mike* M511

RWG M511 - 05/14/2024 - CDGv188832 - Homo Polled - PB94 - Red

CED	BW	WW	YW	Milk	TM	CEM	STAY	DOC
12	-0.9	69	98	20	55	7	19	11

SIRE RWG HORSE POWER H311
RWG KASH FLOW K444
RWG DAISY E447

DAM RWG ENTITY E308 ET
RWG SANDRA J004
DDN 7144E

SLC OUTBACK 142X
RWG ALLSTAR D510
RWG RIGHT COMBINATION C506
RWG DAISY XPRESS 2401

RWG BLOWIN' MINDS 4402
SLC LORA 164Y
JAB BERKSHIRE 409B
DDN 46C

Act. BW **87**

Adj. WW **860**

Adj. YW **1216**

YG	CW	REA	MARB	FAT
-0.25	26.00	0.76	0.320	-0.030

RWG Mighty Mike M511 is the long bodied, super sharp profiled, great structured bull, who also got the dark red bonus, massive scrotal, and backed by a darn good RWG Entity E308 daughter. Here's a female that has been stuck into our recip program her whole life and always been talked about the fact she's too darn good to not be taking her own calves. RWG Mighty Mike M511 is her first natural calf and she kinda blew the doors down. She made a statement! He's a direct RWG Kash Flow K444 son who's got all of daddy's cool traits but kept his dams added look and completeness. He is a younger bull and therefore, we did not get to see his use in our own breeding program in 2025. He's got a unique pedigree and balanced EPD's to make him so useable on a wide range of females.

Selling 1/2 possession, 1/2 semen interest

RWG Frozen Genetics

EMBRYOS FOR SALE ON THESE, ALONG WITH OTHER LEADING DONORS BY PRIVATE TREATY YEAR ROUND!

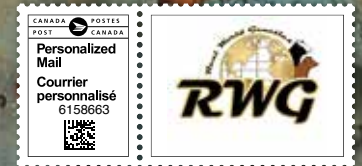






RETURN ADDRESS:

Royal Western Gelbvieh
35347 Range Road 270
Red Deer, Alberta
T4G 0C9



RETURN POSTAGE GUARANTEED
PORT DE RETOUR GARANTI

If you wish to stop receiving The Draft Pick Bull Sale catalogue, or would like to update addresses, please email tanyahollman@hotmail.com or text Tanya at 403-352-9283.