

37th Annual
BULL SALE

FRIDAY, MARCH 6, 2026 AT THE RANCH, PONTEIX, SASK. CANADA

SALE AT 1:00 P.M. CST | DINNER AT 11:00 A.M.

100+ BULLS • RED & BLACK

PUREBRED GELBIEH • SEMEN TESTED • PROVEN GENETICS
PERFORMANCE SIRES • HEIFER BULLS • FRESH PEDIGREES



Davidson
GELBIEH 

VERNON & EILEEN DAVIDSON

HOME (306) 625-3755

CELL (306) 625-7863 CELL (306) 625-7864

www.davidsongelbvieh.com

davidsongelbvieh@sasktel.net

INTERNET BIDDING ON **D|L|M|S**

LONESOME
DOVE
RANCH 

ROSS & TARA DAVIDSON

ASH, CAMERON, JAIME & FLYNN

ROSS (306) 625-7045 TARA (306) 625-7345

www.lonesomedoveranch.ca

lonesomedoveranch@sasktel.net

WELCOME TO OUR 37TH ANNUAL BULL SALE!

It is our pleasure to invite you to attend our bull sale on Friday, March 6th, 2026!

There has never been a better time to be in the cattle business, or a better time to invest in quality genetics! At Davidson Gelbvieh & Lonesome Dove Ranch, we're committed to producing a consistent set of bulls that will meet the needs of our customers and achieve their goals.

Our focus is clear: raise bulls that are built to breed, last, and perform. They will sire calves that grow, thrive, and build momentum. We believe in cattle that are fertile, easy to manage, practical, and capable of thriving across a wide range of environments.

Whether you're sourcing one new sire or your entire bull battery, and whether you are a commercial or seedstock cattleman, you'll find that this large selection of bulls brings a lot of qualities to the table.

Within our 2026 offering, we have eye-catching, deep-bodied, sound-made bulls. We have several strong groups of half-brothers, and offer performance and calving ease bulls. There are reliable, proven bloodlines as well as new, innovative genetics.

All bulls are registered with the Canadian Gelbvieh Association, are sire-verified, DNA tested (100K), and evaluated for homozygous polled and black traits. A complete health exam and breeding soundness evaluation is conducted on each bull prior to sale day.

To our valued, loyal customers and friends, thank you for your continued trust. We look forward to visiting with you! If you're new to our program, we welcome your inquiries and look forward to the opportunity to help you find bulls that fit your operation.

Friday, March 6, 2026 is sale day. Join us for coffee and donuts in the morning, a beef lunch at 11:00 am and a live sale at 1:00pm Saskatchewan time. Bring your family, bring your neighbours, and enjoy the day with us in our heated sale barn!

We're excited about the road ahead—and we'd be proud to be part of your breeding program.

**Davidson
GELBIEH**

VERNON & EILEEN DAVIDSON

HOME (306) 625-3755

CELL (306) 625- 7863

CELL (306) 625-7864

www.davidsongelbvieh.com

davidsongelbvieh@sasktel.net



**LONESOME
DOVE
RANCH**

ROSS & TARA DAVIDSON
ASH, CAMERON, JAIME & FLYNN

ROSS (306) 625- 7045

TARA (306) 625-7345

HOME (306) 625-3513

www.lonesomedoveranch.ca
lonesomedoveranch@sasktel.net

L to R: Vernon, Eileen, Cameron, Tara, Jaime, Flynn, Ash, Ross



Cameron



Ash



Jaime



Flynn

1:00 P.M., CST FRIDAY, MARCH 6TH, 2026

PLEASE BRING THIS CATALOG TO THE SALE

PRE-SALE VIEWING

We would be pleased to tour you through the bulls before the sale, call us anytime.

BULL INSURANCE

Bulls left for later delivery are done so at the buyer's risk. Insurance on purchases is the responsibility of the buyer.

SALE ACCOMMODATIONS

Please book sale accommodations EARLY!

PARKSIDE INN

Ponteix, SK (306) 625-3553

AIRBNB

Cadillac, SK www.airbnb.ca (306) 785-2003

HOLIDAY INN EXPRESS & SUITES

Swift Current, SK (306) 773-8288

GRASSLANDS INN

Mankota, SK (306) 478-2909

CANALTA HOTEL

Assiniboia, SK (306) 642-1010

CANALTA HOTEL

Shaunavon, SK (306) 297-2595

GN GREAT NORTHERN HOTEL

Malta, Montana, USA (406) 654-2100

AIR TRAVEL

Our nearest large airport is at Regina, SK, approximately 3 hours away. Small planes can land at the Swift Current Airport, 1 hour away. Stateside, Billings, MT and Great Falls, MT airports are approximately 5 hours away.

INTERNATIONAL & USA TRAVELLERS & BUYERS

We are pleased to coordinate livestock shipment and export requirements. Please remember your current passport and check USA/Canada Border Crossings for requirements and hours of operation.

US FUNDS - ATTN: UNITED STATES CUSTOMERS

Please note that a strong US dollar currently gives American customers a purchasing advantage. American funds shall be accepted at the Rate of Exchange as announced on sale day.



SALE STAFF

DONNIE PEACOCK AUCTIONEER (306) 662-8288

GRANT BARNETT RINGMAN (306) 690-9717

RANDY AMES RINGMAN (306) 858-7788

KEVIN GORUICK RINGMAN (306) 266-4369

PETEROSA EXPORTS LTD.

ROGER PETERS SALE CONSULTANT (403) 828 9815

SALE DAY & LUNCH

Dinner at 11:00 a.m. CST

Sale starts at 1:00 p.m. CST, Friday, March 6, 2026

SALE LOCATION

DIRECTIONS TO OUR BULL YARD From Cadillac, SK - travel 6 miles south, 8 miles east and ½ mile north. From Ponteix, SK intersection - travel 6 miles south, 3 miles west and ½ mile north.

We are approximately 5 hours from Billings, MT, 3 hours from Regina, SK, 6 hours from Calgary, AB, and 6 hours from Brandon, MB. **WATCH FOR SIGNS!**

SALE DAY PHONES

Vernon (306) 625-7864 | Eileen (306) 625-7863

Ross (306) 625-7045 | Tara (306) 625-7345

Cameron (639) 943-7060 | Ash (639) 943-7050

ONLINE VIEWING AND PURCHASING

Videos of the bull sale lots will be available on our websites www.davidsongelbvieh.com or www.lonesomedoveranch.ca or www.dlms.ca. If interested in bidding online during the sale please register EARLY, two days prior to the sale. Call DLMS for further information (780) 699-5082 or (780) 991-3025



DIAL-A-BULL PROGRAM

(306) 625-7863 or (306) 625-7045

Each year we accommodate many off-site buyers. If you are unable to attend the sale, please call us well ahead of time to discuss and arrange purchasing options.



REFERENCE SIRE



DRT LONESOME ONE AND DONE 38J

CDGV176886 · JAN 27, 2021 · DRT 38J · PUREBRED 94%

DVE DAVIDSON FUEL 87D
DVE DAVIDSON JUBILEE 138F
 DVE DAVIDSON MS JAY 74C

DVE DAVIDSON JUMPSTART 44X
DRT LONESOME TIGER LILY
 DRT HIGH SOCIETY 24S

actBW	adjWW	adjYW	CE	BW	WW	YW	MILK	TM	CEM	ST
86	753	1290	7	2.4	83	133	17	58	4	15
YG	CW	CREA	MARB	CFAT	COLOUR		POLLED STATUS			
-0.05	47	0.46	-0.050	-0.020	BLACK		HOMO POLLED			

We purchased DRT Lonesome One & Done 38J from Ross & Tara - he has been an outstanding addition, to our herd bull battery! Just when you think they can't get any better it does!! His EPD's are awe-inspiring but more impressive is his take up with discriminating bull buyers including Davidson Cattle Co., Silver Line Cattle Co. and Steve Stone! We have retained 5 bred One and Done daughters and more One and Done daughters once again in 2025! We used him on heifers in 2024 and 2025.



DVE DAVIDSON KEENER 134N

CDGV189697 · FEB 17, 2025 · DVE 134N · PUREBRED 94%

DVE DAVIDSON JUBILEE 138F
DRT LONESOME ONE AND DONE 38J
 DRT LONESOME TIGER LILY 74C

DVE DAVIDSON U-BETCHA 174A
DVE DAVIDSON MS U-BETCHA 112L
 DVE DAVIDSON MS MONEY 120B

actBW	adjWW	adjYW	CE	BW	WW	YW	MILK	TM	CEM	ST
84	731	1460	7.8	1.3	77	115	14	53	4	12.1
YG	CW	CREA	MARB	CFAT	COLOUR		POLLED STATUS			
-0.01	42	0.32	0.06	-0.02	HOMO BLACK		HOMO POLLED			

No sugar coating here, just plain performance in a good looking, homozygous polled and homozygous black package. Middle, top and eye appeal make for this no nonsense kinda of bull all set to work! He boasts a 731 lb adj weaning weight along with a 1460 lb adjusted yearling...his fertile dam, a first-calf heifer, is DVE Davidson Ms U-betcha 112L! You can't get them any deeper, yet smooth shouldered and just right!



DVE DAVIDSON DON-ELLIOT 203N

CDGV189709 · FEB 19, 2025 · DVE 203N · PUREBRED 94%

DVE DAVIDSON JUBILEE 138F
DRT LONESOME ONE AND DONE 38J
 DRT LONESOME TIGER LILY 74C

DVE DAVIDSON PLENTY 194J
DVE DAVIDSON MS PLENTY 151L
 DVE DAVIDSON MS COBALT 119G

actBW	adjWW	adjYW	CE	BW	WW	YW	MILK	TM	CEM	ST
85	845	1360	10.2	2.4	90	134	21	66	5	17.1
YG	CW	CREA	MARB	CFAT	COLOUR		POLLED STATUS			
-0.02	40	0.46	0.06	0	HOMO BLACK		HOMO POLLED			

His fertile first-calf heifer, DVE Davidson Ms Plenty 151L makes it all look easy...she has produced! He had an 85 lb birth weight, but an 845 adj weaning weight and a 1360 adjusted yearling weight! Homozygous polled, homozygous black and born in February, he'll be well grown out and ready to work come spring! One & Done is stamping them real good!



DVE DAVIDSON STERLING 173N

CDGV189735 · MAR 3, 2025 · DVE 173N · PUREBRED 94%

DVE DAVIDSON JUBILEE 138F
DRT LONESOME ONE AND DONE 38J
 DRT LONESOME TIGER LILY 74C

OSF BRETT FAVRE 1G
DVE DAVIDSON MS BRETT 11L
 DVE DAVIDSON MS DRILLER 171J

actBW	adjWW	adjYW	CE	BW	WW	YW	MILK	TM	CEM	ST
78	704	1312	13.1	-0.3	66	91	18	51	6	15.4
YG	CW	CREA	MARB	CFAT	COLOUR		POLLED STATUS			
-0.12	26	0.4	0.03	-0.03	HOMO BLACK		HOMO POLLED			

One & Done genetics produce optimum results - his dam, a first-calf heifer, is DVE Davidson Ms Brett 11L. He was smaller at birth with a 78 lb birth weight, but as the season went along he got to really gaining, with a 704 lb adj weaning weight and a 1370 lb yearling weight! Live calves with explosive growth are the ones we all want! He is homozygous polled and homozygous black! A stylish bull - One and Done is definitely making his mark!



DVE 134N



DVE 203N



DVE 173N



DVE DAVIDSON ALL ROUND 186N

CDGV189749 · MAR 13, 2025 · DVE 186N · PUREBRED 94%

DVE DAVIDSON JUBILEE 138F

CK DRILLER 34D

DRT LONESOME ONE AND DONE 38J

DVE DAVIDSON MS DRILLER 49L

DRT LONESOME TIGER LILY 74C

DVE DAVIDSON MS CROWEL 111J

actBW	adjWW	adjYW	CE	BW	WW	YW	MILK	TM	CEM	ST
82	715	1370	10	1.4	75	117	18	56	4	16.7

YG	CW	CREA	MARB	CFAT	COLOUR	POLLED STATUS
-0.1	37	0.42	0.02	-0.03	BLACK	HOMO POLLED

Homozygous polled, gaining and growing with a 715 lb adj weaning and a 1370 lb adj yearling, One & Done is stamping them pretty consistent! His beautiful Mom, a fertile first-calf heifer is DVE Davidson Ms Driller 49L. Her sire Driller goes back to a bull we purchased many years ago, from Britains, that has produced many great progeny for us, for many years!



DVE 186N



DVE DAVIDSON HERBERT 189N

CDGV189752 · MAR 15, 2025 · DVE 189N · PUREBRED 94%

DVE DAVIDSON JUBILEE 138F

DVE DAVIDSON VIP 84E

DRT LONESOME ONE AND DONE 38J

DVE DAVIDSON MS V.I.P. 107L

DRT LONESOME TIGER LILY 74C

DVE DAVIDSON MS SECRET 108B

actBW	adjWW	adjYW	CE	BW	WW	YW	MILK	TM	CEM	ST
86	735	1295	9.3	2.8	69	106	17	52	6	13.1

YG	CW	CREA	MARB	CFAT	COLOUR	POLLED STATUS
-0.11	33	0.4	0.1	-0.03	HOMO BLACK	HOMO POLLED

His fertile dam named for her sire V.I.P., DVE Davidson Ms V.I.P. 107L, a first-calf heifer, achieving her best in this homozygous black, homozygous polled sale bull! Butt, scrotal and wow look at me - a foot in every corner - he is sure to be a favourite!



DVE 189N



DVE DAVIDSON HECTOR 88K

CDGV179097 · FEB 15, 2022 · DVE 88K · PUREBRED 94%

DVE DAVIDSON MR 236D

JM 57E

BNH FACE YOUR DESTINY 16F

DVE DAVIDSON MS EXCELL 64H

NGC DESTINY

DVE DAVIDSON MS TRUMP 127E

actBW	adjWW	adjYW	CE	BW	WW	YW	MILK	TM	CEM	ST
89	752	1228	12	-0.1	63	91	19	50	6	13

YG	CW	CREA	MARB	CFAT	COLOUR	POLLED STATUS
-0.36	32	0.84	0.090	-0.080	RED	HOMO POLLED

We purchased Hector to add capacity to our red breeding program. Robust and elevated in his look, Hector moves ideally thanks to his incredible feet and correct structure. Hector's daughters are exceptional—feminine, nicely extended through the front end, and full of body. Hector bulls are big-topped, big-butted, and layered with the same consistent muscle pattern; these bulls are of future. In addition to his practical qualities, Hector's influence is already being recognized in the show ring. He sired DRT Lonesome Artemis 310M, the Grand Champion Bred Heifer at her first showing at the 2025 Canadian National Junior Gelbvieh Show in Swift Current, SK.



REFERENCE SIRE
Pictured as a Yearling



DRT LONESOME MONUMENT 134N

CDGV190317 · FEB 7, 2025 · DRT 134N · PUREBRED 94%

BNH FACE YOUR DESTINY 16F

DVE DAVIDSON SAM 16D

DVE DAVIDSON HECTOR 88K

DRT LONESOME CONNECTION 382K

DVE DAVIDSON MS EXCELL 64H

DRT LONESOME CRUISE CONTROL 115E

actBW	adjWW	adjYW	CE	BW	WW	YW	MILK	TM	CEM	ST
88	750	1228	10.7	0.7	63	84	23	54	6	15.7

YG	CW	CREA	MARB	CFAT	COLOUR	POLLED STATUS
-0.3	25	0.75	0.01	-0.05	RED	HOMO POLLED

Stout, functional, and exceptional-footed, he boasts a huge, square hip, elite front end, and a big, balanced body. Confident in his movement and full of power, this bull combines performance, soundness, and proven maternal genetics, his grand-dam is a Dam of Merit.



DRT134N

ONE AND DONE 38J PROGENY

HECTOR 88K PROGENY



DRT 245N

DRT 245N



DRT LONESOME RAILROAD 245N

CDGV190005 • FEB 13, 2025 • DRT 245N • PUREBRED 94%

BNH FACE YOUR DESTINY 16F
DVE DAVIDSON HECTOR 88K
 DVE DAVIDSON MS EXCELL 64H

DVE DAVIDSON STEADYEDDY 47H
DRT LONESOME SEQUIN 151D
 DRT LONESOME SPARKLE 3A

actBW	adjWW	adjYW	CE	BW	WW	YW	MILK	TM	CEM	ST
89	688	1216	14.6	-1.4	55	72	20	47	7	15.6
YG	CW	CREA	MARB	CFAT	COLOUR		POLLED STATUS			
-0.25	21	0.58	0.34	-0.05	RED		HOMO POLLED			

Big, well-balanced, and built to perform! This stout features a deep, muscle pattern, smoothness and exceptional eye appeal. He's full of vigor and ready to breed, his dam is a 10-year-old cow who has been a consistent performer.



DRT 328N

DRT 328N



DRT LONESOME COURSE CORRECT 328N

CDGV190304 • FEB 17, 2025 • DRT 328N • PUREBRED 94%

BNH FACE YOUR DESTINY 16F
DVE DAVIDSON HECTOR 88K
 DVE DAVIDSON MS EXCELL 64H

DVE DAVIDSON STEADYEDDY 47H
DRT LONESOME MAESIE 346K
 DRT LONESOME SHELAGH

actBW	adjWW	adjYW	CE	BW	WW	YW	MILK	TM	CEM	ST
84	733	1406	7.1	1.7	75	99	19	56	4	7.1
YG	CW	CREA	MARB	CFAT	COLOUR		POLLED STATUS			
-0.33	38	0.77	0.1	-0.08	RED		HOMO POLLED			

Quiet, big-barrelled, with a perfect foot under him, this square bull catches your attention. He hit the ground running at birth and has been a strong gainer since day one. We love how Hector combines with our Steadyeddy daughters.



DRT 411N

DRT 411N



DRT LONESOME POSSE 411N

CDGV190047 • FEB 24, 2025 • DRT 411N • PUREBRED 94%

BNH FACE YOUR DESTINY 16F
DVE DAVIDSON HECTOR 88K
 DVE DAVIDSON MS EXCELL 64H

DVE DAVIDSON SAM 16D
DRT LONESOME ARIA 267H
 DRT LONESOME DEBRA 315B

actBW	adjWW	adjYW	CE	BW	WW	YW	MILK	TM	CEM	ST
90	804	1401	11.2	1.7	76	106	24	62	5	11.4
YG	CW	CREA	MARB	CFAT	COLOUR		POLLED STATUS			
-0.42	37	1.17	0.06	-0.07	RED		HOMO POLLED			

His performance and power is balanced with a smooth, clean front end. He posted a solid 818lb actual weaning weight, and continued to develop a thick, square hip and exceptional muscle. Raised by a beautifully-uddered Sam daughter.



DRT 519N

DRT 519N



DRT LONESOME CHAPLIN 519N

CDGV189949 • MAR 17, 2025 • DRT 519N • PUREBRED 94%

BNH FACE YOUR DESTINY 16F
DVE DAVIDSON HECTOR 88K
 DVE DAVIDSON MS EXCELL 64H

DVE DAVIDSON STEADYEDDY 47H
DRT LONESOME DENISE 68K
 DRT LONESOME PHOEBE 34F

actBW	adjWW	adjYW	CE	BW	WW	YW	MILK	TM	CEM	ST
88	685	1414	10.4	1.4	68	90	16	49	5	15.1
YG	CW	CREA	MARB	CFAT	COLOUR		POLLED STATUS			
-0.27	31	0.68	0.13	-0.06	RED		POLLED			

This bull delivers consistent, impressive gains, demonstrating 4.22lb ADG. Packed with power and punch, he's built to sire steers that will yield well. Thick and long, you'll find him in the pen, he combines performance with standout presence.



DVE DAVIDSON ROGER THAT 42N

CDGV189771 · FEB 5, 2025 · DVE 42N · PUREBRED 94%

SLC SLC MASTERPLANI35F
FRSQ FOURSQUARE EL JEFE 84L
FRSQ FOURSQUARE ALLISON 28A

DRT LONESOME A LIST 91G
FRSQ FOURSQUARE MS ELECTRIC 74L
FRSQ FOURSQUARE ELECTRA

actBW	adjWW	adjYW	CE	BW	WW	YW	MILK	TM	CEM	ST
80	729	1303	14.2	1.2	71	96	22	58	5	13.8
YG	CW	CREA	MARB	CFAT	COLOUR		POLLED STATUS			
-0.17	38	0.78	0.4	-0.02	RED		HOMO POLLED			

Always looking to enhance our livestock genetic offering, we selected his mom, FRSQ 74L, an all round awesome female! He looks impressive on paper but so is he - 80lb birth, adjusted 729 lb weaning and a 1303 lb adjusted yearling!



DVE 42N



DVE DAVIDSON JACKPOT 120N

CDGV189683 · FEB 15, 2025 · DVE 120N · PUREBRED 94%

CTR CTR JACKPOT 8660F ET
DCSF POST ROCK JACKPOT 116L1
EGL EGL VANNA F005 ET

DVE DAVIDSON HISGIFT 166F
DVE DAVIDSON MS GIFT 215K
DVE DAVIDSON MS 76D

actBW	adjWW	adjYW	CE	BW	WW	YW	MILK	TM	CEM	ST
82	764	1275	11.6	2.6	76	113	21	59	3	17.2
YG	CW	CREA	MARB	CFAT	COLOUR		POLLED STATUS			
-0.12	35	0.46	0.32	-0.03	BLACK		POLLED			

Sired by Post Rock Jackpot 115L1, he is out of DVE Davidson Ms Gift 215K. An out-cross offering that we are pretty high on!



DVE 120N



DVE DAVIDSON BOSSMAN 169N

CDGV189731 · FEB 28, 2025 · DVE 169N · PUREBRED 94%

CTR CTR JACKPOT 8660F ET
DCSF POST ROCK JACKPOT 116L1
EGL EGL VANNA F005 ET

CK DRILLER 34D
DVE DAVIDSON MS DRILLER 185K
DVE DAVIDSON MS CS 36H

actBW	adjWW	adjYW	CE	BW	WW	YW	MILK	TM	CEM	ST
82	732	1401	8.5	1.1	67	94	22	56	2	14
YG	CW	CREA	MARB	CFAT	COLOUR		POLLED STATUS			
-0.21	22	0.52	0.2	-0.04	HOMO BLACK		HOMO POLLED			

Proving to be homozygous black and homozygous polled, are great considerations for a breeder wanting to ensure a consistent calf crop - but when you look at his other abilities like explosive growth the anti is justified! 732 lb weaning weight and a1401 lb adj yearling add to his charm! Mark him now and come and see him! His dam is a fertile Driller daughter!



DVE 169N



DVE DAVIDSON HES A CARD 4N

CDGV189535 · JAN 28, 2025 · DVE 4N · PUREBRED 94%

DDGR DDGR NOBLE MAN 79B
DDGR PAL 73L
DDGR DDGR DAISY 103A

DVE DAVIDSON HISGIFT 166F
DVE DAVIDSON MS HISGIFT 161H
DVE DAVIDSON MS COWBOY 37B

actBW	adjWW	adjYW	CE	BW	WW	YW	MILK	TM	CEM	ST
92	804	1462	11.9	-0.8	83	119	24	65	4	13.1
YG	CW	CREA	MARB	CFAT	COLOUR		POLLED STATUS			
-0.28	42	0.78	0.2	-0.06	RED		HOMO POLLED			

His Dam, a Dam of Merit in 2025, was recognized for her consistent production by the Canadian Gelbvieh Association. We purchased his sire from Gustins. Homozygous polled, with an adjusted weaning weight of 804 lbs. and an adjusted yearling weight of 1330 lbs., he is an out-cross cow bull with lots of growth potential!



DVE 4N

EL JEFE 84L PROGENY

JACKPOT 116L1 PROGENY

PAL 73L PROGENY



REFERENCE SIRE
Pictured as a Yearling

DVE 47L

DVE DAVIDSON ALL NATURAL 47L

CDGV182672 · FEB 6, 2023 · DVE 47L · PUREBRED 94%

OSF BRETT FAVRE 14Z
DVE BRETT FAVRE 1G
OSF OSF GRANITE 14B

BNH FACE YOUR DESTINY 16F
DVE DAVIDSON MS DESTINY 63J
DVE DAVIDSON MS UBET 19G

actBW	adjWW	adjYW	CE	BW	WW	YW	MILK	TM	CEM	ST
82	677	1180	10	2.7	77	121	16	55	6	12
YG	CW	CREA	MARB	CFAT	COLOUR		POLLED STATUS			
-0.14	46	0.52	0.050	-0.050	RED		HOMO POLLED			

We selected this promising Favre son for his calving ease characteristics. He covered his pasture group of yearling heifers easily and early. We've been impressed by his first group of sons on offer, they feature a modest birth weight without sacrificing growth, the average ADG of All Natural sons is 4.40 lb! His daughters have also made a mark on our replacement heifer pen, we have some All Natural show female prospects selected for the 2026 season.



DRT 33N

DRT 33N

DRT LONESOME CLETE 33N

CDGV190040 · JAN 30, 2025 · DRT 33N · PUREBRED 94%

OSF BRETT FAVRE 1G
DVE DAVIDSON ALL NATURAL 47L
DVE DAVIDSON MS DESTINY 63J

DRT LONESOME YELLOWSTONE 175H
DRT DRT LONESOME LESLIE 241L
DRT LONESOME ADELE 82Z

actBW	adjWW	adjYW	CE	BW	WW	YW	MILK	TM	CEM	ST
88	785	1438	11.5	1.4	61	89	25	55	5	16.2
YG	CW	CREA	MARB	CFAT	COLOUR		POLLED STATUS			
-0.25	29	0.52	0.23	-0.07	BLACK		HOMO POLLED			

This All Natural son ranked in the top ten of his contemporary group for both weaning and yearling weight, posting an impressive average daily gain of 4.12 pounds and a 795lb actual weaning weight. Extremely smooth-made with added eye appeal and style, he was raised by a first-calf Yellowstone heifer that did an exceptional job. His maternal pedigree is loaded with longevity.



DRT 171N

DRT 171N

DRT LONESOME STRAIT 171N

CDGV190051 · FEB 9, 2025 · DRT 171N · PUREBRED 94%

OSF BRETT FAVRE 1G
DVE DAVIDSON ALL NATURAL 47L
DVE DAVIDSON MS DESTINY 63J

DVE DAVIDSON LIKE GOLD 131H
DRT DRT LONESOME TRUE BLISS 278L
DRT LONESOME SAFFRON 193F

actBW	adjWW	adjYW	CE	BW	WW	YW	MILK	TM	CEM	ST
82	684	1468	12.1	-0.4	61	81	18	48	7	14.5
YG	CW	CREA	MARB	CFAT	COLOUR		POLLED STATUS			
-0.15	26	0.44	0.19	-0.03	RED		HOMO POLLED			

Complete, well balanced, this good-footed, big-boned bull is smooth, functional, and has strong testicular development. This homozygous polled bull excelled post-weaning, ranking second for yearling weight, gaining an outstanding 4.90lb ADG! His first-calf dam is proving her fertility by breeding back early.



DRT 189N

DRT 189N

DRT LONESOME HIGH ROAD 189N

CDGV190029 · FEB 10, 2025 · DRT 189N · PUREBRED 94%

OSF BRETT FAVRE 1G
DVE DAVIDSON ALL NATURAL 47L
DVE DAVIDSON MS DESTINY 63J

DVE DAVIDSON JUBILEE 138F
DRT DRT LONESOME GLOW UP 239L
DRT LONESOME DANIELLE 150F

actBW	adjWW	adjYW	CE	BW	WW	YW	MILK	TM	CEM	ST
87	727	1465	9.2	1.9	66	99	15	48	5	15.3
YG	CW	CREA	MARB	CFAT	COLOUR		POLLED STATUS			
-0.11	40	0.41	-0.03	-0.04	BLACK		HOMO POLLED			

Big-boned, growthy, and full of substance and dimension, Lonesome High Road is built to take your program to new highs. With Jubilee on the dam's side and a homozygous polled pedigree, this standout bull recorded the third-highest yearling weight and an impressive 5.1 lb ADG.

DRT
319N



DRT LONESOME BENCHMARK 319N

CDGV190052 · FEB 17, 2025 · DRT 319N · PUREBRED 94%

OSF BRETT FAVRE 1G
DVE DAVIDSON ALL NATURAL 47L
DVE DAVIDSON MS DESTINY 63J

DVE DAVIDSON JUBILEE 138F
DRT DRT LONESOME CLARISSA 280L
DRT LONESOME CLARISSA 30IH

actBW	adjWW	adjYW	CE	BW	WW	YW	MILK	TM	CEM	ST
84	667	1385	12.2	1.1	67	100	12	45	6	17.1

YG	CW	CREA	MARB	CFAT	COLOUR	POLLED STATUS
-0.14	26	0.32	0.08	-0.04	BLACK	HOMO POLLED

The combination of Jubilee and All Natural once again works like a charm in this homozygous polled bull. This long-bodied bull had a user-friendly birth weight of 84 pounds and really shone after weaning, gaining 4.41 lb per day.



DRT 319N

DRT
362N



DRT LONESOME FLASH MOB 362N

CDGV190314 · FEB 20, 2025 · DRT 362N · PUREBRED 94%

OSF BRETT FAVRE 1G
DVE DAVIDSON ALL NATURAL 47L
DVE DAVIDSON MS DESTINY 63J

DVE DAVIDSON MACON 111C
DRT DRT LONESOME BIRDIE 377L
DRT LONESOME INDULGE 4J

actBW	adjWW	adjYW	CE	BW	WW	YW	MILK	TM	CEM	ST
83	745	1396	9.7	-0.1	64	87	19	51	4	11

YG	CW	CREA	MARB	CFAT	COLOUR	POLLED STATUS
-0.15	23	0.24	0.16	-0.05	RED	HOMO POLLED

Here is a dark cherry red, well-tempered bull that moves with ease and has a very smooth stride. He offers plenty of muscle and shape, a clean front end and a tidy sheath. Raised by a first-calf Macon daughter, his pedigree is backed by calving ease on both sides, longevity, and fertility. He ranked in the top ten of his contemporary group for weaning weight.



DRT 362N

DRT
434N



DRT LONESOME UNWIND 434N

CDGV189931 · FEB 25, 2025 · DRT 434N · PUREBRED 94%

OSF BRETT FAVRE 1G
DVE DAVIDSON ALL NATURAL 47L
DVE DAVIDSON MS DESTINY 63J

DRT LONESOME PAYCE 162J
DRT DRT LONESOME LUCINDA 22L
DRT LONESOME CAPTIVATE 203J

actBW	adjWW	adjYW	CE	BW	WW	YW	MILK	TM	CEM	ST
84	660	1361	8.2	-0.9	55	75	15	42	4	11.6

YG	CW	CREA	MARB	CFAT	COLOUR	POLLED STATUS
-0.18	33	0.5	0.26	-0.05	RED	HOMO POLLED

Calving ease anchors both sides of this bull's pedigree. Raised by a first-calf Payce heifer, he posted a strong 4.31 lb ADG, and his dam has already bred back early.



Davidson Gelbvieh were honoured to receive the 2025 Man-Sask Gelbvieh Purebred Breeder of the Year Award. Pictured L to R are the Lonesome Dove Ranch crew, Ross, Flynn, & Ash Davidson, Ponteix, SK; Davidson Gelbvieh, Eileen and Vernon Davidson, Ponteix, SK; Davidson Cattle Company, Tyler Davidson, Qu'Appelle, SK; and more of the Lonesome Dove Ranch family, Cameron, Jaime and Tara Davidson.

Find videos and more information on bulls at
www.davidsongelbvieh.com and
www.lonesomedoveranch.ca





REFERENCE SIRE

DVE 118H **DVE DAVIDSON OPTIMIST 118H**

CDGV172262 · MARCH 1, 2020 · DVE 118H · PUREBRED 94%

DVE DAVIDSON U-BETCHA 174A
 DVE DAVIDSON DUNNIT 25C
 DVE DAVIDSON MS SECRET 78U

DVE DAVIDSON THE GIFT 110B
 DVE DAVIDSON MS GIFT 77D
 DVE DAVIDSON MS 24/7 62A

actBW	adjWW	adjYW	CE	BW	WW	YW	MILK	TM	CEM	ST
95	805	1518	9	1.4	80	120	10	50	4	13
YG	CW	CREA	MARB	CFAT	COLOUR		POLLED STATUS			
-0.27	55	0.84	0.000	-0.70	RED		HOMO POLLED			

Grand Champion Bull, 2021 Farmfair as a yearling, and Reserve Champion Mature Bull in 2022. Optimist progeny continue to get a lot of attention by many a seed-stock and commercial cattle producer!! A daughter was Champion Purebred Senior Heifer Calf at Farmfair 2022. An all-around bull that continues to awe us with his breeding strengths of disposition, sound fluid movement and progeny. A daughter, DVE Ms Optimist 69M was Senior Champion Heifer at Farmfair 2025 and an Optimist sired son, DVE Davidson Gent 30N was Reserve Senior Bull Calf at the 2025 National Gelbvieh Show at Agribition. Sadly this is the last of the direct Optimist sired progeny.



DVE 3N

DVE 3N **DVE DAVIDSON ROLAND 3N**

CDGV189534 · JAN 26, 2025 · DVE 3N · PUREBRED 94%

DVE DAVIDSON DUNNIT 25C
 DVE DAVIDSON OPTIMIST 118H
 DVE DAVIDSON MS GIFT 77D

DVE DAVIDSON HISGIFT 166F
 DVE DAVIDSON MS HISGIFT 4K
 DVE DAVIDSON MS BANJO 189E

actBW	adjWW	adjYW	CE	BW	WW	YW	MILK	TM	CEM	ST
86	681	1291	9.5	-0.1	68	99	17	51	4	10.5
YG	CW	CREA	MARB	CFAT	COLOUR		POLLED STATUS			
-0.19	46	0.61	0.11	-0.06	RED		HOMO POLLED			

Sired by the famed Optimist, his dam DVE 4K is a Hisgift daughter, a soggy 4 year old mama, that produced this Jan born bull and a replacement heifer for us in 2024! She is bred up early once again! A homozygous polled, herd sire elect, gaining and growing with a ADG of 3.53 and a WDA of 3.30. A dark red, tank of a bull, well put together.



DVE 24N

DVE 24N **DVE DAVIDSON RIGHT'O 24N**

CDGV189559 · FEB 2, 2025 · DVE 24N · PUREBRED 94%

DVE DAVIDSON DUNNIT 25C
 DVE DAVIDSON OPTIMIST 118H
 DVE DAVIDSON MS GIFT 77D

JM 57E
 DVE DAVIDSON MS EXCELL 165H
 DVE DAVIDSON MS MACY 99E

actBW	adjWW	adjYW	CE	BW	WW	YW	MILK	TM	CEM	ST
78	687	1273	12.3	-1.2	67	85	19	52	6	15.9
YG	CW	CREA	MARB	CFAT	COLOUR		POLLED STATUS			
-0.27	42	0.94	-0.08	-0.04	RED		HOMO POLLED			

His dam qualified as a Dam of Merit in 2024 and 2025. Optimist is siring the bulls with all the goods! ADG 3.53 WDA3.44, he is homozygous polled and out of an eye appealing dam DVE 165M, a JM 57E daughter. He was born a twin to a heifer calf. Big testicles, stout made - he will sire those high yielding steers.



DVE 30N

DVE 30N **DVE DAVIDSON GENT 30N**

CDGV189563 · FEB 2, 2025 · DVE 30N · PUREBRED 94%

DVE DAVIDSON DUNNIT 25C
 DVE DAVIDSON OPTIMIST 118H
 DVE DAVIDSON MS GIFT 77D

DVE DAVIDSON HOSS 1X
 DVE DAVIDSON MS HOSS 172B
 DVE DAVIDSON MS RED WRAP 44P

actBW	adjWW	adjYW	CE	BW	WW	YW	MILK	TM	CEM	ST
94	889	1100	8.5	2	80	114	13	53	3	16
YG	CW	CREA	MARB	CFAT	COLOUR		POLLED STATUS			
-0.26	33	0.62	0.15	-0.07	RED		HOMO POLLED			

We exhibited DVE Davidson Gent 30N this fall - so he is well halter broke. His easy going charm makes for an easy fleshing, eye appealing tank, with lots of testicular development! He too has tested homozygous polled. We have retained his 1/2 maternal sister, DVE Davidson Ms Good 176M, due to calf early too! Fertile bloodlines prevail! DVE Davidson Gent 30N was Reserve Champion Senior Bull Calf at both Farmfair and at the 2025 National Gelbvieh Show during Agribition in Regina, SK!



DVE DAVIDSON GALANT 33N

CDGV189575 • FEB 3, 2025 • DVE 33N • PUREBRED 94%

DVE DAVIDSON DUNNIT 25C
DVE DAVIDSON OPTIMIST 118H
DVE DAVIDSON MS GIFT 77D

DRT LONESOME BELIEVE IT 223E
DVE DAVIDSON MS BELIEVE 26G
DVE DAVIDSON MS U-BETCHA 188E

actBW	adjWW	adjYW	CE	BW	WW	YW	MILK	TM	CEM	ST
80	665	1337	16.3	-1.7	60	80	16	46	7	16.4

YG	CW	CREA	MARB	CFAT	COLOUR	POLLED STATUS
-0.16	27	0.5	0.01	-0.03	RED	HOMO POLLED

WDA of 3.52 and a ADG of 4.12, an 80 lb birth weight and a 1337 lb adj yearling weight, make for an impressive darker red bull, with lots of hair, that is homozygous polled. His dam, a DRT Believe It 223E daughter is 7 years of age, with 5 calves to date, including a bull working for one of our repeat clients the Comptons.



DVE 33N



DVE DAVIDSON MR SASK 65N

CDGV189614 • FEB 8, 2025 • DVE 65N • PUREBRED 94%

DVE DAVIDSON DUNNIT 25C
DVE DAVIDSON OPTIMIST 118H
DVE DAVIDSON MS GIFT 77D

DVE DAVIDSON HISGIFT 166F
DVE DAVIDSON MS HISGIFT 137K
RPS DARLING 11D

actBW	adjWW	adjYW	CE	BW	WW	YW	MILK	TM	CEM	ST
82	708	1301	9.3	1.7	84	130	15	57	6	12.6

YG	CW	CREA	MARB	CFAT	COLOUR	POLLED STATUS
-0.2	65	0.8	0.04	-0.07	RED	HOMO POLLED

Optimist has sired a great set of progeny including this early Feb. born bull, he too is homozygous polled! Darker red, smooth shouldered, a deep flanked bull, with proficient growth, and lots of hair - all the wants for a herd bull that can sire able progeny!



DVE 65N



DVE DAVIDSON HOLLYWOOD 68N

CDGV189617 • FEB 8, 2025 • DVE 68N • PUREBRED 94%

DVE DAVIDSON DUNNIT 25C
DVE DAVIDSON OPTIMIST 118H
DVE DAVIDSON MS GIFT 77D

DVE DAVIDSON U-BETCHA 174A
DVE DAVIDSON MS UBET 22H
DVE DAVIDSON MS BRITCHES 140B

actBW	adjWW	adjYW	CE	BW	WW	YW	MILK	TM	CEM	ST
88	695	1277	13.2	1.5	78	122	8	47	6	11.9

YG	CW	CREA	MARB	CFAT	COLOUR	POLLED STATUS
-0.2	40	0.6	-0.02	-0.06	RED	HOMO POLLED

His dam at 6 years of age has to date always sired bull calves including a herd sire working for Funks. Proving his worth with an ADG of 4.20 and a WDA of 3.46, he's bred to produce the pounds. Nice headed, darker red - this fancy, fancy, strapping good bull will make you look! He'll breed the same kind of outstanding progeny!



DVE 68N



DVE DAVIDSON DOUBLETIME 86N

CDGV189638 • FEB 11, 2025 • DVE 86N • PUREBRED 94%

DVE DAVIDSON DUNNIT 25C
DVE DAVIDSON OPTIMIST 118H
DVE DAVIDSON MS GIFT 77D

JM 57E
DVE DAVIDSON MS EXCELL 71K
DVE DAVIDSON MS COWBOY 133D

actBW	adjWW	adjYW	CE	BW	WW	YW	MILK	TM	CEM	ST
96	818	1603	5.1	4.1	94	145	19	66	4	15.1

YG	CW	CREA	MARB	CFAT	COLOUR	POLLED STATUS
-0.28	59	0.86	-0.21	-0.08	RED	HOMO POLLED

Cow bulls like DVE Davidson Double Time 86N are bred to produce...look at his stats...4.90 lb ADG and a WDA of 4.15 lb.! A super powerful package that will initiate production - from his tidy head to his look at me credentials!



DVE 86N

OPTIMIST 118H PROGENY



REFERENCE SIRE
DVE 200N - a Plenty-sired son

DVE 194J

DVE DAVIDSON PLENTY 194J

CDGV175913 · MARCH 22, 2021 · DVE 194J · PUREBRED 94%

DDGR NAVAHO 188X
DVE DAVIDSON CROWELL 175B
LCS BIG SKY GAL 489J

STON SECRET WEAPON 6S
DVE DAVIDSON MS SECRET 156A
DVE DAVIDSON MS JIM 127R

actBW	adjWW	adjYW	CE	BW	WW	YW	MILK	TM	CEM	ST
95	758	1283	15	-0.3	60	83	18	47	6	13
YG	CW	CREA	MARB	CFAT	COLOUR		POLLED STATUS			
-0.20	20	0.43	0.160	-0.040	HOMO BLACK		HOMO POLLED			

Plenty is a direct son of Davidson Crowell 175B and Davidson Ms Secret 156A, a real Matriarch in our program delivering 9 progeny in 11 years! She has produced outstanding herd sires for our repeat buyers too including Abels, L & G and Wiebes.



DVE 60N

DVE 60N

DVE DAVIDSON ALL STAR 60N

CDGV189609 · FEB 7, 2025 · DVE 60N · PUREBRED 94%

DVE DAVIDSON CROWELL 175B
DVE DAVIDSON PLENTY 194J
DVE DAVIDSON MS SECRET 156A

DVE DAVIDSON CORNERSTONE 136D
DVE DAVIDSON MS CORNER 147G
DVE DAVIDSON MS MACY 46C

actBW	adjWW	adjYW	CE	BW	WW	YW	MILK	TM	CEM	ST
88	799	1324	14.3	-0.3	72	98	25	61	6	14.1
YG	CW	CREA	MARB	CFAT	COLOUR		POLLED STATUS			
-0.19	31	0.55	0.15	-0.04	HOMO BLACK		HOMO POLLED			

His capacity made dam DVE Davidson Ms Corner 147G has a beautiful udder and has claimed Dam of Merit status in 2025! She is nearly 7 years of age and has had 5 natural progeny to date, all born within 12 days of one another. Her sons are at work at repeat buyers Millars and at Caykos too. We have 1 of her super daughters in production DVE Davidson Ms Bartender 29M. Look at his performance, 799 adj weaning weight and a 1324 adj yearling weight! Deep flanked and capacity built!



DVE 96N

DVE 96N

DVE DAVIDSON ABBOTT 96N

CDGV189658 · FEB 12, 2025 · DVE 96N · PUREBRED 94%

DVE DAVIDSON CROWELL 175B
DVE DAVIDSON PLENTY 194J
DVE DAVIDSON MS SECRET 156A

DVE DAVIDSON BENTLEY 78B
DVE DAVIDSON MS BENTLEY 77F
DVE DAVIDSON MS READY 92C

actBW	adjWW	adjYW	CE	BW	WW	YW	MILK	TM	CEM	ST
97	796	1433	7.5	3.3	74	116	22	59	4	14.7
YG	CW	CREA	MARB	CFAT	COLOUR		POLLED STATUS			
-0.28	58	0.9	-0.16	-0.07	HOMO BLACK		HOMO POLLED			

Bred right to breed your cows, look for this homozygous polled, homozygous black bull to be an asset in breeding calves that grow! His 796 lb adj yearling and 1433 lb adj yearling are a powerful combination out of DVE Davidson Ms Fuel 77F, who at eight years old was a Dam of Merit in 23, 24 and 25. We have 3 of her natural fertile daughters set to calve here soon, DVE 196J, DVE 115L and DVE 108M! A son was chosen as a herd bull for Harbidges. Lots of middle, top and expanse - look at his ample bone, rib and muscle!





DVE DAVIDSON WINSTON 174N

CDGV189736 · MAR 5, 2025 · DVE 174N · PUREBRED 94%

DVE DAVIDSON CROWELL 175B
DVE DAVIDSON PLENTY 194J
DVE DAVIDSON MS SECRET 156A

FRL FIR RIVER COBALT
DVE DAVIDSON MS COBALT 92H
DVE DAVIDSON MS NAVAHO 109Z

actBW	adjWW	adjYW	CE	BW	WW	YW	MILK	TM	CEM	ST
89	739	1362	14.2	-0.4	58	86	20	49	7	16.7
YG	CW	CREA	MARB	CFAT	COLOUR		POLLED STATUS			
-0.08	38	0.37	0.13	-0.03	HOMO BLACK		HOMO POLLED			

One like another these Plenty sired bulls don't back down! Homozygous black, homozygous polled, we like his numbers...the real numbers, 89 lb birth, 739 lb adjusted weaning and a 1362 lb adj yearling! His soggy made mom has a full daughter, DVE Ms Plenty 131L, to this sale lot, both set to calve here at the very beginning of our calving. Full of red meat, with all the right traits - bold and good!



DVE 174N



DVE DAVIDSON FREIGHTTRAIN 185N

CDGV189746 · MAR 12, 2025 · DVE 185N · PUREBRED 94%

DVE DAVIDSON CROWELL 175B
DVE DAVIDSON PLENTY 194J
DVE DAVIDSON MS SECRET 156A

PHG BLACK MAC Z13
DVE DAVIDSON MS MACY 114C
DVE DAVIDSON MS ROMANCE 49A

actBW	adjWW	adjYW	CE	BW	WW	YW	MILK	TM	CEM	ST
88	697	1256	16.2	0.7	60	82	18	48	6	15.1
YG	CW	CREA	MARB	CFAT	COLOUR		POLLED STATUS			
-0.24	12	0.49	0.13	-0.04	HOMO BLACK		HOMO POLLED			

Out of a Dam of Merit for many years, DVE Davidson Ms Macy 114C had 9 progeny to her credit... including herd bulls at Culwells and Horsemen. This sale lot has been tested for homozygous black and homozygous polled traits. A balanced, look at me bull - with substance, bone and thriftiness!



DVE 185N



DVE DAVIDSON MY AMIGO 200N

CDGV189769 · MAR 31, 2025 · DVE 200N · PUREBRED 94%

DVE DAVIDSON CROWELL 175B
DVE DAVIDSON PLENTY 194J
DVE DAVIDSON MS SECRET 156A

FRL FIR RIVER COBALT
DVE DAVIDSON MS COBALT 90H
DVE DAVIDSON MS NAVAHO 80Z

actBW	adjWW	adjYW	CE	BW	WW	YW	MILK	TM	CEM	ST
82	778	1432	14.5	-1.7	56	84	21	49	6	13.6
YG	CW	CREA	MARB	CFAT	COLOUR		POLLED STATUS			
-0.14	24	0.27	0.19	-0.05	HOMO BLACK		HOMO POLLED			

We all need bulls that sire that calve easily and then hammer the scale down come market time! With an attractive 82 lb birth weight, a 778 lb adj weaning weight and an adjusted yearling weight of 1432 lbs, you can take care of business! His Dam Ms Colbalt 90H has contributed with two daughters here, both DVE Davidson Ms Manager 176L and DVE Davidson Ms Plenty 66M, a full sister to this sale bull.



DVE 200N

PLENTY 194J PROGENY





REFERENCE SIRE

LRSF K300 **LRSF GENERATION K300 ET**

AMGV1557064 · AUG 11, 2022 · LRSF K300 · PUREBRED 94%

BABR DOMINANCE 4280B KKC NOBILITY 123Y
 PHG EMINENCE E02 CMR SUNSHINE 94D
 DDN BELLY RIVER AMBER 56A CMR 13A

actBW	adjWW	adjYW	CE	BW	WW	YW	MILK	TM	CEM	ST
85	683	1163	16	-1.4	64	92	22	53	6	19
YG	CW	CREA	MARB	CFAT	COLOUR		POLLED STATUS			
-0.19	12	0.33	0.280	-0.040	RED		HOMO POLLED			

Outcross genetics that complement our red program... introducing Generation, an Eminence son. Dark in colour, has a long, easy stride, and a clean, eye-appealing look. He comes from a truly unique pedigree—out of a breed-changing mama cow with incredible body type, a pretty front end, and an exceptional udder. We were excited to pursue this Eminence x Sunshine combination, expecting depth of body, big hip, vigour, and growth—and this bull delivers. A great example of the look and quality these next-generation bulls demonstrate.

DRT 64N **DRT LONESOME VALUES 64N**

CDGV190328 · FEB 2, 2025 · DRT 64N · PUREBRED 94%

PHG EMINENCE E02 DVE DAVIDSON EASTMAN 128E
LRSF GENERATION K300 ET **DRT LONESOME PLUMBERRY 432H**
 CMR SUNSHINE 94D DRT LONESOME CRUISE CONTROL 115E

actBW	adjWW	adjYW	CE	BW	WW	YW	MILK	TM	CEM	ST
78	631	1204	21.7	-3.5	47	56	23	46	7	20.6
YG	CW	CREA	MARB	CFAT	COLOUR		POLLED STATUS			
-0.18	4	0.35	0.32	-0.02	RED		HOMO POLLED			

This dense, smooth Generation son is full of look. He's attractive through his front end and sets down a big, correct hind leg when in motion. Backed by a beautiful cow with excellent feet and udder, crowned a Dam of Merit. His grand dam is a Dam of Merit as well. This bull combines structure, style, and maternal substance.

DRT 138N **DRT LONESOME HOMEFIELD 138N**

CDGV189997 · FEB 7, 2025 · DRT 138N · PUREBRED 94%

PHG EMINENCE E02 MHD CRUISE 16A
LRSF GENERATION K300 ET **DRT LONESOME CRUISE CONTROL 115E**
 CMR SUNSHINE 94D DRT LONESOME TUTTI FRUITI 90C

actBW	adjWW	adjYW	CE	BW	WW	YW	MILK	TM	CEM	ST
84	659	1309	15.7	-1.4	51	64	25	50	8	17
YG	CW	CREA	MARB	CFAT	COLOUR		POLLED STATUS			
-0.18	14	0.34	0.21	-0.04	RED		HOMO POLLED			

This bull is long, bold, and built to impress, he moves with ease and purpose, showing off his flawless structure. He's nice front to back, with an attractive head and big butt and ample testicular development; he's the total package. He's backed by a Dam of Merit, here is a herd improver.

DRT 263N **DRT LONESOME BOTTOMS UP 263N**

CDGV190037 · FEB 14, 2025 · DRT 263N · PUREBRED 94%

PHG EMINENCE E02 DVE DAVIDSON SAM 16D
LRSF GENERATION K300 ET **DRT LONESOME HEARTSTRING 234J**
 CMR SUNSHINE 94D DRT LONESOME POPPY 77C

actBW	adjWW	adjYW	CE	BW	WW	YW	MILK	TM	CEM	ST
88	714	1333	10.5	-0.5	67	99	21	55	5	15
YG	CW	CREA	MARB	CFAT	COLOUR		POLLED STATUS			
-0.22	41	0.63	-0.08	-0.06	RED		HOMO POLLED			

Homozygous polled, this son is a big, rugged-made performance bull with a solid foot, big bone, and a bright future. He's built for growth, durability, and will stamp his calves the same.



DRT 64N



DRT 138N

All sale bulls will sell with a valid semen evaluation sale day and are veterinarian inspected for soundness and health.

DRT
316N

DRT LONESOME SUNNY 316N

CDGV190024 · FEB 16, 2025 · DRT 316N · PUREBRED 94%

PHG EMINENCE E02
LRSF GENERATION K300 ET
CMR SUNSHINE 94D

DRT LONESOME HALL OF FAME 38X
DRT LONESOME SUNBERRY 213E
DRT LONESOME CRANBERRY

actBW	adjWW	adjYW	CE	BW	WW	YW	MILK	TM	CEM	ST
87	567	1277	10.5	3.4	70	104	17	52	5	16.7
YG	CW	CREA	MARB	CFAT	COLOUR	POLLED STATUS				
-0.27	40	0.66	0.08	-0.07	RED	POLLED				

Dark red, long-spined, moderate-framed, and big-topped, this smooth-made bull is full of hair and charisma. He's clean-fronted, nicely sheathed, and shows excellent testicular development, making him a functional and attractive herd sire prospect.



DRT 316N

DRT
412N

DRT LONESOME RED GARNET 412N

CDGV189956 · FEB 24, 2025 · DRT 412N · PUREBRED 94%

PHG EMINENCE E02
LRSF GENERATION K300 ET
CMR SUNSHINE 94D

MHD CRUISE 16A
DRT LONESOME AMETHYST
DRT LONESOME WALTZ

actBW	adjWW	adjYW	CE	BW	WW	YW	MILK	TM	CEM	ST
83	697	1243	17.7	-3.3	47	53	23	47	8	16
YG	CW	CREA	MARB	CFAT	COLOUR	POLLED STATUS				
-0.19	7	0.14	0.12	-0.05	RED	HOMO POLLED				

Big, stout-made, soggy-centered Generation son, with a wide top and powerful presence. Docile and easy to handle, he boasts excellent testicular development and versatility. Out of a beautiful Cruise cow, this generation bull is built for performance and future herd impact.



DRT 412N

DRT
459N

DRT LONESOME NORTH POINT 459N

CDGV190058 · MAR 1, 2025 · DRT 459N · PUREBRED 94%

PHG EMINENCE E02
LRSF GENERATION K300 ET
CMR SUNSHINE 94D

DRT LONESOME HALL OF FAME 38X
DRT LONESOME WINONA 297G
DRT LONESOME GABRIELLE

actBW	adjWW	adjYW	CE	BW	WW	YW	MILK	TM	CEM	ST
90	712	1323	12.1	-0.2	59	84	21	51	3	18.4
YG	CW	CREA	MARB	CFAT	COLOUR	POLLED STATUS				
-0.2	25	0.45	0.3	-0.05	RED	POLLED				

Good in his make, he's thick, big-boned, powerful, neat, clean-fronted, and full of look and body. Out of an incredible Hall of Farm cow that reliably raises keepers, he combines structural correctness, performance, and proven maternal genetics. With strong sisters in the herd, this stout bull has all the features for a future herd sire.



DRT 459N

GENERATION K300 ET PROGENY





REFERENCE SIRE
Pictured at 10 months

MGA 211K

MGA RED KINGDOM 211K

AMGV1536081 · MARCH 2, 2022 · MGA 211K · 88%

HFGC HF ROSCOE 34P59 ET
HFGC GIP ARROWHEAD S82
MGA BARBARA 278M

OGSG OVERTIME 175D
MGA POCAHONTAS 815F
MGA POCAHONTAS 501C

actBW	adjWW	adjYW	CE	BW	WW	YW	MILK	TM	CEM	ST
80	737	1271	13	-1.4	64	87	22	54	6	16
YG	CW	CREA	MARB	CFAT	COLOUR		POLLED STATUS			
-0.32	28	0.76	0.160	-0.060	RED		HOMO POLLED			

Purchased from Golden Image Cattle Company in 2022 to expand our purebred Gelbvieh genetics and source a new heifer bull - but look at his progeny growth potential! He had 20 progeny in his first year of natural service, and 25 in 2025! In 2024/25 his daughters had an average BW of 78 lbs and his bull calves averaged 80 lbs. We have retained 8, 2-year-old Kingdom daughters, all to calve within 30 days of one another and have retained 5 daughters in 2025! We exhibited an awesome Kingdom daughter DVE 6M and a Kingdom son DVE 33M in 2024!



DVE 10N

DVE 10N

DVE DAVIDSON MR JANUARY 10N

CDGV189541 · JAN 29, 2025 · DVE 10N · PUREBRED 94%

HFGC GIP ARROWHEAD S82
MGA RED KINGDOM 211K
MGA POCAHONTAS 815F

TIP TIP MR 79J
DVE DAVIDSON MS MISTER 37L
DVE DAVIDSON MS EXCELL 25J

actBW	adjWW	adjYW	CE	BW	WW	YW	MILK	TM	CEM	ST
82	769	1413	11.4	0.7	77	112	25	63	3	11.4
YG	CW	CREA	MARB	CFAT	COLOUR		POLLED STATUS			
-0.32	18	0.67	0.2	-0.05	RED		HOMO POLLED			

With an adjusted yearling weight of 1413 lbs., his young first-calf Mother, a Mr sired daughter, all set to calve early once again, is charting the course for the good ones. Homozygous polled and born in late January 2025. Impressive birth to yearling EPD's too! Look at this length of spine, his neat shoulder and how he is so likeable from the tip of his head to his hip and then some!



DVE 18N

DVE 18N

DVE DAVIDSON KINGDOM 18N

CDGV189548 · FEB 1, 2025 · DVE 18N · PUREBRED 94%

HFGC GIP ARROWHEAD S82
MGA RED KINGDOM 211K
MGA POCAHONTAS 815F

DL JEN-TY GOOD DEAL 150G
DVE DAVIDSON MS GOOD 128L
DVE DAVIDSON MS DANDY 28B

actBW	adjWW	adjYW	CE	BW	WW	YW	MILK	TM	CEM	ST
84	673	1247	11.5	-0.5	56	81	20	48	5	14.9
YG	CW	CREA	MARB	CFAT	COLOUR		POLLED STATUS			
-0.3	24	0.74	-0.03	-0.05	RED		POLLED			

Fertility genetics prevail with his young first-calf Dam, DVE 37L, a Mr daughter, all set to calve at the very beginning of the calving season once again! A bull with darker pigmentation throughout, he is Kingdom sired and consistent!

DVE 21N

DVE DAVIDSON KINGDOM 21N

CDGV189551 · FEB 1, 2025 · DVE 21N · PUREBRED 94%

HFGC GIP ARROWHEAD S82
MGA RED KINGDOM 211K
MGA POCAHONTAS 815F

DVE DAVIDSON OPTIMIST 118H
DVE DAVIDSON MS OPTIMIST 8L
DVE DAVIDSON MS U-BETCHA 188E

actBW	adjWW	adjYW	CE	BW	WW	YW	MILK	TM	CEM	ST
74	643	1177	11	0.6	70	99	17	52	5	13.2
YG	CW	CREA	MARB	CFAT	COLOUR		POLLED STATUS			
-0.38	43	1.07	-0.01	-0.07	RED		HOMO POLLED			

With a very moderate birth weight of 74 lbs, this calf was orphaned early in life. His Dam DVE 8L, a first-calf heifer, died in April of 2025. He is homozygous polled.

For information on additional reference sires, visit www.davidsongelbvieh.com and www.lonesomedoveranch.ca



DVE DAVIDSON KINGDOM 67N

CDGV189616 · FEB 8, 2025 · DVE 67N · PUREBRED 94%

HFGC GIP ARROWHEAD S82
MGA RED KINGDOM 211K
MGA POCAHONTAS 815F

TIP TIP MR 79J
DVE DAVIDSON MS MISTER 74L
DVE DAVIDSON MS DESTINY 186J

actBW	adjWW	adjYW	CE	BW	WW	YW	MILK	TM	CEM	ST
78	687	1224	16.3	-1.3	55	76	22	49	7	11.7
YG	CW	CREA	MARB	CFAT	COLOUR		POLLED STATUS			
-0.28	16	0.53	0.11	-0.06	RED		HOMO POLLED			

Homozygous polled, a moderate birth weight of 78 lbs and an adjusted yearling weight of 1224. His Dam, sired by Mr. is sporting her first-calf as a heifer. Darker red with lots of substance, bone, width and top.



DVE 67N



DVE DAVIDSON MANLEY 202N

CDGV189633 · FEB 11, 2025 · DVE 202N · PUREBRED 94%

HFGC GIP ARROWHEAD S82
MGA RED KINGDOM 211K
MGA POCAHONTAS 815F

DVE DAVIDSON OPTIMIST 118H
DVE DAVIDSON MS OPTIMIST 43L
DVE DAVIDSON MS UBET 19G

actBW	adjWW	adjYW	CE	BW	WW	YW	MILK	TM	CEM	ST
74	623	1162	15.6	-2	55	77	13	41	6	16.4
YG	CW	CREA	MARB	CFAT	COLOUR		POLLED STATUS			
-0.16	16	0.31	0.11	-0.04	RED		HOMO POLLED			

Calving ease and out of a first-calf heifer, an Optimist daughter, she is due to calf at the start of the calving season once again! Homozygous polled, an early February born Kingdom son. A great combination of proven genetics in a practical, profit minded kinda bull!



DVE 202N



DVE DAVIDSON KINGDOM 90N

CDGV189653 · FEB 11, 2025 · DVE 90N · PUREBRED 94%

HFGC GIP ARROWHEAD S82
MGA RED KINGDOM 211K
MGA POCAHONTAS 815F

DL JEN-TY GOOD DEAL 150G
DVE DAVIDSON MS GOOD 115L
DVE DAVIDSON MS FUEL 44F

actBW	adjWW	adjYW	CE	BW	WW	YW	MILK	TM	CEM	ST
80	720	1313	13.1	-0.9	60	81	23	53	5	18.6
YG	CW	CREA	MARB	CFAT	COLOUR		POLLED STATUS			
-0.36	30	0.77	0.05	-0.08	RED		HOMO POLLED			

With an adjusted yearling of 1313 lbs, this Kingdom sired bull is out of a Good Deal daughter, a first-calf heifer – a dependable Mama bred up early once again! Homozygous polled with an 80 lb birth weight, if you like them darker red and complete - look no further!



DVE 90N



DVE DAVIDSON KINGDOM 117N

CDGV189680 · FEB 14, 2025 · DVE 117N · PUREBRED 94%

HFGC GIP ARROWHEAD S82
MGA RED KINGDOM 211K
MGA POCAHONTAS 815F

JM 57E
DVE DAVIDSON MS EXCELL 70L
DVE DAVIDSON MS DAKOTA 178Y

actBW	adjWW	adjYW	CE	BW	WW	YW	MILK	TM	CEM	ST
82	730	1400	7.7	1.9	79	110	21	60	5	11.3
YG	CW	CREA	MARB	CFAT	COLOUR		POLLED STATUS			
-0.32	50	1.07	0.03	-0.06	RED		HOMO POLLED			

A lot of performance with an ADG of 4.41 and WDA of 3.51, combined with a big spread from birth to yearling EPD's, - this Valentine born homozygous polled bull is out of DVE 70L a JM 57E daughter. His calm disposition lends to his ability to perform - he'll produce logically enhanced progeny!



DVE 117N



DVE 128N

DVE DAVIDSON JUAN 128N

CDGV189691 • FEB 17, 2025 • DVE 128N • PUREBRED 94%

HFGC GIP ARROWHEAD S82
MGA RED KINGDOM 211K
MGA POCAHONTAS 815F

DVE DAVIDSON HISGIFT 166F
DVE DAVIDSON MS HISGIFT 33L
DVE DAVIDSON MS COWBOY 110E

actBW	adjWW	adjYW	CE	BW	WW	YW	MILK	TM	CEM	ST
85	692	1246	10.3	-1.2	59	79	21	51	5	16.7
YG	CW	CREA	MARB	CFAT	COLOUR		POLLED STATUS			
-0.34	33	0.73	0.04	-0.08	RED		HOMO POLLED			

His Dam is a first- calf heifer, DVE 29L. He is homozygous polled, wider made, smooth shouldered and darker red.



DVE 160N

DVE DAVIDSON KINGDOM 160N

CDGV189722 • FEB 25, 2025 • DVE 160N • PUREBRED 94%

HFGC GIP ARROWHEAD S82
MGA RED KINGDOM 211K
MGA POCAHONTAS 815F

JM 57E
DVE DAVIDSON MS EXCELL 129L
DVE DAVIDSON MS UBET 166G

actBW	adjWW	adjYW	CE	BW	WW	YW	MILK	TM	CEM	ST
78	796	1517	12.9	1.3	71	104	24	60	7	16.6
YG	CW	CREA	MARB	CFAT	COLOUR		POLLED STATUS			
-0.26	24	0.49	0.24	-0.07	RED		HOMO POLLED			

His adjusted yearling weight of 1517 lbs , combined with curve bending EPD's, ADG of 4.71 lb, WDA of 3.85 and his 78 lb birth weight make us all pay attention! JM 57E and Kingdom genetics make it happen! His dam is a first-calf heifer DVE Davidson Ms Excell 129L. He has that pronounced herd bull look, unequaled balanced completeness - and is captivating lots of due attention!



DVE 50J

DVE DAVIDSON HAT TRICK 50J

CDGV175056 • FEB 5, 2021 • DVE 50J • PUREBRED 94%

DVE DAVIDSON CROWELL 175B
DVE DAVIDSON VIP 84E
DVE DAVIDSON MS ROMANCE 28Z

FRL FIR RIVER COBALT
DVE DAVIDSON MS COBALT 100F
DVE DAVIDSON MS MONEY 120B

actBW	adjWW	adjYW	CE	BW	WW	YW	MILK	TM	CEM	ST
92	680	1237	13	-0.5	51	78	17	42	6	13
YG	CW	CREA	MARB	CFAT	COLOUR		POLLED STATUS			
-0.20	17	0.47	0.150	-0.030	BLACK		HOMO POLLED			

This is the final group of Hat Trick-sired calves. His bulls were among the most sought-after in our 2025 sale. He remains one of the most consistent sires we have in terms of BW and growth. He produces attractive, easy-moving sons, but his biggest contribution was the many high-quality, noteworthy replacement females he sired. We're excited to watch these herd-building daughters perform for years to come. His progeny consistently average 86 lb—with strong gains. He's produced quality calves in both our commercial and purebred herds. His genetic dependability, growth, and maternal strength make him a standout contributor to any program.



DRT 92N

DRT LONESOME PLAYBACK 92N

CDGV189922 • FEB 4, 2025 • DRT 92N • PUREBRED 94%

DVE DAVIDSON VIP 84E
DVE DAVIDSON HAT TRICK 50J
DVE DAVIDSON MS COBALT 100F

DVE DAVIDSON JUBILEE 138F
DRT LONESOME TULIP 1K
DRT LONESOME LA-DI-DA 130B

actBW	adjWW	adjYW	CE	BW	WW	YW	MILK	TM	CEM	ST
84	638	1281	17	-1.9	49	72	13	37	7	14
YG	CW	CREA	MARB	CFAT	COLOUR		POLLED STATUS			
-0.23	9	0.5	0.11	-0.03	HOMO BLACK		POLLED			

Stout yet moderate-framed, and full of shape and body, this bull is one of the very last sons to sell out of the remarkable Hat Trick. Homozygous black and good from day one, he combines eye appeal with maternal resilience. His young dam and grand-dam both stand out for fertility, with his grand-dam set to calve for the 11th time in the first cycle of 2026.

DRT
131N



DRT LONESOME NOBILITY 131N

CDGV189995 • FEB 7, 2025 • DRT 131N • PUREBRED 94%

DVE DAVIDSON VIP 84E

DVE DAVIDSON RUTTAN 117C

DVE DAVIDSON HAT TRICK 50J

DRT LONESOME PRIMA DONNA 112F

DVE DAVIDSON MS COBALT 100F

WVR NOTED 315N

actBW	adjWW	adjYW	CE	BW	WW	YW	MILK	TM	CEM	ST
88	695	1439	7.3	0.1	60	94	19	49	5	15.1

YG	CW	CREA	MARB	CFAT	COLOUR	POLLED STATUS
-0.29	45	0.83	0.15	-0.07	BLACK	POLLED

With a maternally strong pedigree featuring some unique stateside genetics on the dam side, this bull delivers performance and substance. Note his growth potential, he had an actual weaning weight of 765 lb, gained 4.71 lb per day post-weaning, and ranks 5th in his contemporary group for yearling weight.



DRT 131N

DRT
374N



DRT LONESOME MINECRAFT 374N

CDGV189951 • FEB 20, 2025 • DRT 374N • PUREBRED 94%

DVE DAVIDSON VIP 84E

DRT LONESOME LUCKY SHOT 324G

DVE DAVIDSON HAT TRICK 50J

DRT LONESOME PARAMOUNT 72K

DVE DAVIDSON MS COBALT 100F

DRT LONESOME DARLING 33B

actBW	adjWW	adjYW	CE	BW	WW	YW	MILK	TM	CEM	ST
85	770	1384	9.9	0.9	60	90	21	51	2	13

YG	CW	CREA	MARB	CFAT	COLOUR	POLLED STATUS
-0.29	38	0.77	0.17	-0.06	HOMO BLACK	HOMO POLLED

This pen favorite has impressed us from day one and will be one to watch on sale day. He ranked 5th at weaning, carries a homozygous polled and homozygous black pedigree, and brings rare maternal genetics, raised by one of our select Lucky Shot daughters. Truly a standout!



DRT 374N

DVE
122K



DVE DAVIDSON PIZZAZZ 122K

CDGV179130 • FEB 24, 2022 • DVE 122K • PUREBRED 94%

DVE DAVIDSON BAMFORD 36A

PHG BLACK MAC Z13

DVE DAVIDSON CORNERSTONE 136D

DVE DAVIDSON MS MACY 43B

DVE DAVIDSON MS NAVAHO 75Z

DVE DAVIDSON MS NAVAHO 106Z

actBW	adjWW	adjYW	CE	BW	WW	YW	MILK	TM	CEM	ST
98	749	1267	11	0.8	81	101	32	73	6	11

YG	CW	CREA	MARB	CFAT	COLOUR	POLLED STATUS
-0.23	37	0.49	0.140	-0.700	HOMO BLACK	HOMO POLLED

Consistent bloodlines, reliable and tested - he is a homozygous polled and homozygous black! With a lot of natural bone, super eye appeal, a stout made bull with all the goods! He is out of a Dam of Merit in 2024 and 2025, a very adept Mom, DVE Davidson Ms Crowell 136H, ready to Mother her new progeny at the very beginning of the season once again. Pizzazz daughters too, are fabulous! At our 2025 bull sale, A powerful thick made bull, a son of Pizzazz, sold to repeat buyers, Paradons for \$15,500 for their commercial herd.



REFERENCE SIRE

Pictured as a Yearling

DVE
46N



DVE DAVIDSON HOME-BOY 46N

CDGV189588 • FEB 5, 2025 • DVE 46N • PUREBRED 94%

DVE DAVIDSON CORNERSTONE 136D

DVE DAVIDSON CROWELL 175B

DVE DAVIDSON PIZZAZZ 122K

DVE DAVIDSON MS CROWELL 136H

DVE DAVIDSON MS MACY 43B

DVE DAVIDSON MS EDISON 128W

actBW	adjWW	adjYW	CE	BW	WW	YW	MILK	TM	CEM	ST
86	655	1300	15.3	-0.1	69	90	27	62	6	11.2

YG	CW	CREA	MARB	CFAT	COLOUR	POLLED STATUS
-0.22	25	0.45	0.18	-0.06	HOMO BLACK	HOMO POLLED

Consistent bloodlines, reliable and tested - he is homozygous polled, homozygous black and gaining! He is out of a Dam of Merit in 2024 and 2025, a very adept Mom, DVE Davidson Ms Crowell 136H, ready to Mother her new progeny at the very beginning of the season once again! He is a long sided, big topped bull!



DVE 46N

HAT TRICK 50J PROGENY

PIZZAZZ 122K PROGENY



DVE 55N



DVE DAVIDSON JACKSON 55N

CDGV189604 · FEB 7, 2025 · DVE 55N · PUREBRED 94%

DVE DAVIDSON CORNERSTONE 136D
 DVE DAVIDSON PIZZAZZ 122K
 DVE DAVIDSON MS MACY 43B

DVE DAVIDSON MCGRAW 165D
 DDN DDN BELLY RIVER GRACIE 951G
 DDN 11B

actBW	adjWW	adjYW	CE	BW	WW	YW	MILK	TM	CEM	ST
95	935	1303	6.2	3.4	88	117	36	79	4	14.5
YG	CW	CREA	MARB	CFAT	COLOUR		POLLED STATUS			
-0.11	50	0.38	0.26	-0.06	HOMO BLACK		POLLED			

Amiable in all his character, we exhibited this bull in the fall of 2025...he is a solid, long-sided bull, very proficient in all his abilities! He is well halter broke! His capacity dam, we purchased from long-time Gelbvieh producers Nelsons. Pizzazz progeny are some of the best!



DVE 83N



DVE DAVIDSON CARTER 83N

CDGV189635 · FEB 11, 2025 · DVE 83N · PUREBRED 94%

DVE DAVIDSON CORNERSTONE 136D
 DVE DAVIDSON PIZZAZZ 122K
 DVE DAVIDSON MS MACY 43B

DDGR NAVAHO 188X
 DVE DAVIDSON MS NAVAHO 8Z
 DVE DAVIDSON MS JIM 13P

actBW	adjWW	adjYW	CE	BW	WW	YW	MILK	TM	CEM	ST
89	697	1273	14.1	0.4	75	99	26	63	7	15.2
YG	CW	CREA	MARB	CFAT	COLOUR		POLLED STATUS			
-0.18	32	0.44	0.15	-0.05	HOMO BLACK		POLLED			

At 14 years of age, his Dam, Ms Navaho 8Z, has 13 natural progeny - what a legacy she has contributed! And yes, she looks good and youthful and is bred early. She'll grace the calving fields early again this year! She has sons working for repeat clientele both Kleins and Guenthers and we have a daughter, DVE Davidson Ms V.I.P. 17L. Outstanding bloodlines working their way into longevity and outstanding gains. Mark him now, look at him sale day. You are reading his history - now you have the opportunity to make your own history!



DVE 136N



DVE DAVIDSON RUMBLE 136N

CDGV189699 · FEB 17, 2025 · DVE 136N · PUREBRED 94%

DVE DAVIDSON CORNERSTONE 136D
 DVE DAVIDSON PIZZAZZ 122K
 DVE DAVIDSON MS MACY 43B

PHG BUDDY D81
 DVE DAVIDSON MS BUDDY 173F
 DVE DAVIDSON MS NAVAHO 173Z

actBW	adjWW	adjYW	CE	BW	WW	YW	MILK	TM	CEM	ST
87	733	1274	12	1.6	79	105	23	62	4	12.2
YG	CW	CREA	MARB	CFAT	COLOUR		POLLED STATUS			
-0.3	29	0.56	0.04	-0.08	BLACK		HOMO POLLED			

Pizzazz, his sire, has always been one of our favourite! His dam, an 8-year-old, has had 6 progeny to date and is bred for an early calving! We have retained two of her daughters, DVE Davidson Ms Bartender 103L and DVE Davidson Ms Bartender 184M. One of our favourite sale offerings - a homozygous polled bull sure to catch your attention!



DVE 144N



DVE DAVIDSON WALKER 144N

CDGV189707 · FEB 19, 2025 · DVE 144N · PUREBRED 94%

DVE DAVIDSON CORNERSTONE 136D
 DVE DAVIDSON PIZZAZZ 122K
 DVE DAVIDSON MS MACY 43B

DVE DAVIDSON VIP 84E
 DVE DAVIDSON MS VIP 110H
 DVE DAVIDSON MS COBALT 67F

actBW	adjWW	adjYW	CE	BW	WW	YW	MILK	TM	CEM	ST
90	723	1386	9.7	2	78	112	27	66	5	9.7
YG	CW	CREA	MARB	CFAT	COLOUR		POLLED STATUS			
-0.18	44	0.5	0.23	-0.06	HOMO BLACK		HOMO POLLED			

He is out of DVE Davidson Ms VIP 110H, a Dam of Merit in 2024 and 2025! She has always had bull calves, selling to many repeat buyers across the nation, including Ferme M Paquette, Paradons and Rocking D. Pizzazz progeny are consistently deep in ease of fleshing, muscle, testicular development and completeness.



DVE DAVIDSON ROYCE 147N

CDGV189711 • FEB 19, 2025 • DVE 147N • PUREBRED 94%

DVE DAVIDSON CORNERSTONE 136D
DVE DAVIDSON PIZZAZZ 122K
DVE DAVIDSON MS MACY 43B

CK DRILLER 34D
DVE DAVIDSON MS DRILLER 99K
DVE DAVIDSON MS CROWELL 136H

actBW	adjWW	adjYW	CE	BW	WW	YW	MILK	TM	CEM	ST
89	835	1337	10.5	1.7	78	106	30	69	4	13.9
YG	CW	CREA	MARB	CFAT	COLOUR		POLLED STATUS			
-0.19	45	0.69	0.07	-0.05	HOMO BLACK		HOMO POLLED			

Look at his growth capabilities! Homozygous polled, homozygous black, he is an efficient, soggy, stout son of Pizzazz, backed by his beautiful dam, DVE Davidson Ms Driller 99K. We have retained her daughter, DVE Davidson One & Done 151M. A beautifully structured bull with that extra class!



DVE 147N



DVE DAVIDSON TENNESSEE 148N

CDGV189710 • FEB 19, 2025 • DVE 148N • PUREBRED 94%

DVE DAVIDSON CORNERSTONE 136D
DVE DAVIDSON PIZZAZZ 122K
DVE DAVIDSON MS MACY 43B

DVE DAVIDSON VIP 84E
DVE DAVIDSON MS VIP 41J
DVE DAVIDSON MS COBALT 31F

actBW	adjWW	adjYW	CE	BW	WW	YW	MILK	TM	CEM	ST
88	721	1239	13.8	-1	60	80	25	55	8	13.1
YG	CW	CREA	MARB	CFAT	COLOUR		POLLED STATUS			
-0.22	28	0.56	0.1	-0.05	BLACK		HOMO POLLED			

Like his Pizzazz sired brothers, he too captivates attention with his easy fleshing make - a look at me kinda bull! His dam DVE Davidson Ms Vip 41J, is good and stout! We have retained her classy daughter DVE Davidson Ms Driller 153L.



DVE 148N



DVE DAVIDSON KRAMER 46J

CDGV175052 • FEB 4, 2021 • DVE 46J • PUREBRED 94%

DL BIG DEAL 35B
JM 57E
JM JM CHERRY BOMB 9C

TIP MR BANJO 18B
DVE DAVIDSON MS BANJO 189E
DVE DVE DAVIDSON MS COWBOY 8C

actBW	adjWW	adjYW	CE	BW	WW	YW	MILK	TM	CEM	ST
85	857	1417	12	1.4	68	100	24	58	3	18
YG	CW	CREA	MARB	CFAT	COLOUR		POLLED STATUS			
-0.28	35	0.71	0.160	-0.060	RED		HOMO POLLED			

A strong pedigree magnifies itself here! Awarded Reserve National Senior Champion Bull in 2021, National Junior Champion at the 2022 Canadian Western Agribition & Reserve National Champion 2-year-old at Farmfair International in 2023 and the 2023 Champion Senior Bull at Canadian Western Agribition. A bull you've got to admire from every direction, a bull with top, capacity, bone, stance and length. Ideal in his disposition, an awesome producer, steady and predictable!



REFERENCE SIRE



DVE DAVIDSON REDREADY 39N

CDGV189584 • FEB 4, 2025 • DVE 39N • PUREBRED 94%

JM 57E
DVE DAVIDSON KRAMER 46J
DVE DAVIDSON MS BANJO 189E

DVE DAVIDSON HISGIFT 166F
DVE DAVIDSON MS HISGIFT 150H
DVE DAVIDSON MS JENNINGS 29C

actBW	adjWW	adjYW	CE	BW	WW	YW	MILK	TM	CEM	ST
86	729	1274	11.8	0.2	69	93	27	61	5	16.2
YG	CW	CREA	MARB	CFAT	COLOUR		POLLED STATUS			
-0.26	40	0.72	0.29	-0.06	RED		HOMO POLLED			

Credited with being a Dam of Merit in 2025, his Dam is DVE Davidson Hisgift 150H. She has produced herd sires for repeat buyers, both Gunthers and Pedersens. You can easily imagine the good he'd do in many programs!



DVE 39N

PIZZAZZ 122K PROGENY

KRAMER 46J PROGENY



DVE 49N



DVE DAVIDSON KRANDALL 49N

CDGV189591 • FEB 6, 2025 • DVE 49N • PUREBRED 94%

JM 57E
DVE DAVIDSON KRAMER 46J
DVE DAVIDSON MS BANJO 189E

DVE DAVIDSON HISGIFT 166F
DVE DAVIDSON MS HISGIFT 131K
DVE DAVIDSON MS UBETCHA 12G

actBW	adjWW	adjYW	CE	BW	WW	YW	MILK	TM	CEM	ST
78	711	1423	10.3	0.7	68	98	22	56	4	14.6
YG	CW	CREA	MARB	CFAT	COLOUR		POLLED STATUS			
-0.17	47	0.53	0.39	-0.06	RED		HOMO POLLED			

When you score these bulls you'll appreciate a lot of honest contributions - but when the stats all line up it makes you really pay attention! He is a twin to DVE 50N, but look at his growth with an adj weaning of 711 lbs and an adj yearling of 1423 lbs! His dam has an excellent udder! He too is homozygous polled, a darker red bull with abundant substance.



DVE 50N



DVE DAVIDSON FREDRICK 50N

CDGV189592 • FEB 6, 2025 • DVE 50N • PUREBRED 94%

JM 57E
DVE DAVIDSON KRAMER 46J
DVE DAVIDSON MS BANJO 189E

DVE DAVIDSON HISGIFT 166F
DVE DAVIDSON MS HISGIFT 131K
DVE DAVIDSON MS UBETCHA 12G

actBW	adjWW	adjYW	CE	BW	WW	YW	MILK	TM	CEM	ST
82	674	1200	14.4	0.4	66	88	22	55	6	14
YG	CW	CREA	MARB	CFAT	COLOUR		POLLED STATUS			
-0.19	36	0.52	0.29	-0.05	RED		HOMO POLLED			

Born a twin to DVE 49N, he too is homozygous polled, and out of the beautiful DVE Davidson Ms Hisgift 131K, an excellent uddered female! Bold in his stout makeup, he is a honest looking bull made to work!



DVE 88N



DVE DAVIDSON REDNECK 88N

CDGV189651 • FEB 11, 2025 • DVE 88N • PUREBRED 94%

JM 57E
DVE DAVIDSON KRAMER 46J
DVE DAVIDSON MS BANJO 189E

PHG FIREBIRD F33
JNL JNL INVITATION H101
GEMH INVITATION ONLY

actBW	adjWW	adjYW	CE	BW	WW	YW	MILK	TM	CEM	ST
92	795	1413	6.4	1.9	81	109	29	69	1	13.1
YG	CW	CREA	MARB	CFAT	COLOUR		POLLED STATUS			
-0.25	53	0.76	-0.04	-0.07	RED		POLLED			

It is not hard to see the writing on the wall, we purchased his dam from John Carrel and she has not disappointed! She was granted Dam of Merit in both 2024 and 2025! He has carried that torch well, gaining an adjusted 795 lb weaning and a 1413 lb adj yearling. Keep his daughters! You could look a long time to find this kinda bull!



DVE 94N



DVE DAVIDSON JOHNATON 94N

CDGV189656 • FEB 11, 2025 • DVE 94N • PUREBRED 94%

JM 57E
DVE DAVIDSON KRAMER 46J
DVE DAVIDSON MS BANJO 189E

DVE DAVIDSON YELLOWBIRD 4B
HL PRAIRIE JEWEL 22H ET
DTJ PRAIRIE JEWEL P37

actBW	adjWW	adjYW	CE	BW	WW	YW	MILK	TM	CEM	ST
82	709	1277	16.1	-1	58	68	25	54	6	17.2
YG	CW	CREA	MARB	CFAT	COLOUR		POLLED STATUS			
-0.31	21	0.53	0.16	-0.08	RED		HOMO POLLED			

We purchased his dam from Hurlburts and she has went on to qualify here as a Dam of Merit in 2024 and 2025! She is a Yellowbird daughter, a bull we raised. A full sister to this dam, TIP 3F, created a lot of stir earlier this fall, with her heifer selling for \$20,000!



DVE DAVIDSON HONEST LAD 122N

CDGV189685 · FEB 16, 2025 · DVE 122N · PUREBRED 94%

JM 57E

DVE DAVIDSON DUNNIT 25C

DVE DAVIDSON KRAMER 46J

DVE DAVIDSON MS DUNNIT 65H

DVE DAVIDSON MS BANJO 189E

DVE DAVIDSON MS JENNY 107D

actBW	adjWW	adjYW	CE	BW	WW	YW	MILK	TM	CEM	ST
89	772	1306	9.1	1	75	100	25	62	2	16.1
YG	CW	CREA	MARB	CFAT	COLOUR	POLLED STATUS				
-0.33	41	0.65	-0.1	-0.1	BLACK	HOMO POLLED				

Out of a Dam of Merit, in 2024, and 2025, DVE Davidson Ms Dunnit 65H - look for this bull to breed profitable progeny - his 1306 Adj weaning, and 772 lb weaning, combine with a 89 lb birth weight quite nicely! Dependable genetics designed to be substantial income boosters - Kramer sired, he has indeed produced a stellar group!



DVE DAVIDSON RAIN & SHINE 133N

CDGV189696 · FEB 17, 2025 · DVE 133N · PUREBRED 94%

JM 57E

DL JEN-TY GOOD DEAL 150G

DVE DAVIDSON KRAMER 46J

DVE DAVIDSON MS GOOD 44K

DVE DAVIDSON MS BANJO 189E

DVE DAVIDSON MS GRIT 99G

actBW	adjWW	adjYW	CE	BW	WW	YW	MILK	TM	CEM	ST
86	742	1411	7.6	3.6	74	108	26	63	2	16.1
YG	CW	CREA	MARB	CFAT	COLOUR	POLLED STATUS				
-0.35	43	0.88	-0.06	-0.09	RED	HOMO POLLED				

A young three-year-old dam, DVE Ms Good 44K and Kramer make for the magic - 1411 lb adj yearling and a 742 lb adj weaning weight, homozygous polled, he is pulling his weight and is bred to do the same! We work closely with our nutritionist team, to develop these bulls for the long haul!



DVE DAVIDSON SONNY 149N

CDGV189712 · FEB 19, 2025 · DVE 149N · PUREBRED 94%

JM 57E

OSF BRETT FAVRE 1G

DVE DAVIDSON KRAMER 46J

DVE DAVIDSON MS FAVRE 9K

DVE DAVIDSON MS BANJO 189E

DVE DAVIDSON MS TRUE GRIT 17H

actBW	adjWW	adjYW	CE	BW	WW	YW	MILK	TM	CEM	ST
78	692	1317	10.7	2.3	70	99	24	59	5	13.2
YG	CW	CREA	MARB	CFAT	COLOUR	POLLED STATUS				
-0.23	50	0.77	0.25	-0.06	RED	HOMO POLLED				

A 78 lb birth weight, a 692 adjusted weaning weight, a 1317 lb adj yearling weight, and homozygous polled abilities, is a tribute to Kramer and his dam DVE Davidson Ms Favre 9K. We have to admire genetics that breed consistently and predictably, with production - this 4-year-old has worked her heart out this past season and is set to calve at the very beginning of the calving once again! Lots of admirable credentials in one solid package!



DVE DAVIDSON KOOL CAT 156N

CDGV189726 · FEB 20, 2025 · DVE 156N · PUREBRED 94%

JM 57E

DVE DAVIDSON DUNNIT 25C

DVE DAVIDSON KRAMER 46J

DVE DAVIDSON MS DUNNIT 119J

DVE DAVIDSON MS BANJO 189E

DVE DAVIDSON MS GIFT 182D

actBW	adjWW	adjYW	CE	BW	WW	YW	MILK	TM	CEM	ST
84	664	1229	11.3	1.8	74	107	21	58	4	16.1
YG	CW	CREA	MARB	CFAT	COLOUR	POLLED STATUS				
-0.27	30	0.55	0.27	-0.07	RED	HOMO POLLED				

Out of a Dam of Merit in 2025, DVE Davidson Ms Dunnit 119J - she is also the mother of a herd bull working at Hapkes. We have retained her daughter, set to calf early, DVE 125M. He was born a twin to a heifer calf. Homozygous polled with a 4.02 lb ADG!





DVE DAVIDSON LOTTERY 193N

CDGV189756 • MAR 22, 2025 • DVE 193N • PUREBRED 94%

JM 57E
DVE DAVIDSON KRAMER 46J
DVE DAVIDSON MS BANJO 189E

DVE DAVIDSON HISGIFT 166F
DVE DAVIDSON MS HISGIFT 78K
DVE DAVIDSON MS DRILLER 41G

actBW	adjWW	adjYW	CE	BW	WW	YW	MILK	TM	CEM	ST
95	813	1485	7.2	2.7	70	92	25	60	2	15.5
YG	CW	CREA	MARB	CFAT	COLOUR		POLLED STATUS			
-0.17	38	0.54	0.17	-0.05	RED		HOMO POLLED			

One of the big boys, he has gained nearly 4 lbs a day all year... adj weaning of 813 lbs and an adj yearling of 1485 lbs doesn't just happen! His dam is DVE Davidson Ms Hisgift 78K, a proficient, great-looking cow bred up early once again! He too is homozygous polled! Kramer has consistently patterned these bulls one like another - well put together bulls.



DVE DAVIDSON TOMMY 70G

CDGV169421 • FEB 14, 2019 • DVE 70G • PUREBRED 94%

DVE DAVIDSON CROWELL 175B
DVE DAVIDSON VIP 84E
DVE DAVIDSON MS ROMANCE 28Z

DDGR NAVAHO 188X
DVE DAVIDSON MS NAVAHO 75C
DVE DAVIDSON MS WEAPON 80X

actBW	adjWW	adjYW	CE	BW	WW	YW	MILK	TM	CEM	ST
82	764	1280	12	-0.9	59	83	21	50	4	11
YG	CW	CREA	MARB	CFAT	COLOUR		POLLED STATUS			
-0.19	12	0.26	-0.030	-0.050	HOMO BLACK		HOMO POLLED			

Fertile with a capital "F." He sired (naturally) 51 of our 2025 purebred calves! Sons combine growth and gains with thriftiness and eye appeal. His offering averages 3.9lb ADG. Tommy is a true dual-purpose sire and has also been used successfully on well-managed heifers. He's known to get females bred up early in the season and more than got the job done on this offering. If you need several half-brothers to put out with large groups of breeding females, consider these bulls. His versatility allows him to suit many types of programs, and he will produce tremendous bulls and excellent females that will be hard to part with.



DRT LONESOME AUTHENTIC 2N

CDGV190027 • JAN 24, 2025 • DRT 2N • PUREBRED 94%

DVE DAVIDSON VIP 84E
DVE DAVIDSON TOMMY 70G
DVE DAVIDSON MS NAVAHO 75C

RPS CHAIN REACTION
RPS DALMA 73F
RPS DALMA 89D

actBW	adjWW	adjYW	CE	BW	WW	YW	MILK	TM	CEM	ST
89	722	1257	12.6	-0.6	58	89	22	51	5	10.6
YG	CW	CREA	MARB	CFAT	COLOUR		POLLED STATUS			
-0.17	36	0.56	0	-0.04	BLACK		HOMO POLLED			

Here's a big-time black bull with length, power, and presence. Born early, long-spined, and masculine-made. We kept many of his sisters as replacements. With outcross dam-side genetics, he weaned an outstanding 840lb. He's stout, stylish, and free-moving.



DRT LONESOME RENEW 170N

CDGV190034 • FEB 9, 2025 • DRT 170N • PUREBRED 94%

DVE DAVIDSON VIP 84E
DVE DAVIDSON TOMMY 70G
DVE DAVIDSON MS NAVAHO 75C

DVE DAVIDSON RUTTAN 117C
DRT LONESOME GODIVA 226F
DRT LONESOME RUNWAY 56X

actBW	adjWW	adjYW	CE	BW	WW	YW	MILK	TM	CEM	ST
90	708	1306	8.6	2.3	73	115	22	58	4	9.5
YG	CW	CREA	MARB	CFAT	COLOUR		POLLED STATUS			
-0.25	34	0.73	0.25	-0.05	HOMO BLACK		HOMO POLLED			

Big time frame, long and stretchy, with the growth and muscle to make an impact fast. This bull is ready to cover ground and take care of a large cow herd. Homo polled, homo black, with longevity, fertility, and performance bred in from the ground up.



DRT LONESOME STREET LEGAL 282N

CDGV190067 • FEB 15, 2025 • DRT 282N • PUREBRED 94%

DVE DAVIDSON VIP 84E
DVE DAVIDSON TOMMY 70G
DVE DAVIDSON MS NAVAHO 75C

DVE DAVIDSON RUTTAN 117C
DRT LONESOME GISELLA 318H
DRT LONESOME DARLING 33B

actBW	adjWW	adjYW	CE	BW	WW	YW	MILK	TM	CEM	ST
84	645	1211	14.9	-0.2	57	82	22	51	6	13.8
YG	CW	CREA	MARB	CFAT	COLOUR		POLLED STATUS			
-0.16	12	0.19	0.1	-0.04	BLACK		HOMO POLLED			

Big-hind-legged, wide-topped, and well-muscled Tommy son in a moderate-framed package. If your goal is to retain a pen of superstar replacement heifers that truly raise the bar, this bull has the look and pedigree to get it done. He comes from an excellent-footed, beautiful-uddered, big-bodied Dam of Merit with longevity bred deep—take a serious look at this future herd bull.

DRT
286N

DRT LONESOME TRADE SECRET 286N

CDGV190030 · FEB 15, 2025 · DRT 286N · PUREBRED 94%

DVE DAVIDSON VIP 84E

DVE DAVIDSON JUBILEE 138F

DVE DAVIDSON TOMMY 70G

DRT LONESOME BLACK PLUM 274J

DVE DAVIDSON MS NAVAHO 75C

DRT LONESOME EDEN 336E

actBW	adjWW	adjYW	CE	BW	WW	YW	MILK	TM	CEM	ST
84	640	1190	12.7	-1.5	52	78	16	42	5	15.6

YG	CW	CREA	MARB	CFAT	COLOUR	POLLED STATUS
-0.09	29	0.27	0.05	-0.04	HOMO BLACK	HOMO POLLED

A stout-made Tommy bull that grabs you at first glance. Clean and attractive through his skull, big-boned, thick, and hairy. Full of look and eye appeal, and out of a Jubilee cow with really good, udder structure.



DRT 286N

DRT
351N

DRT LONESOME NEED TO KNOW 351N

CDGV190070 · FEB 19, 2025 · DRT 351N · PUREBRED 94%

DVE DAVIDSON VIP 84E

DVE DAVIDSON RUTTAN 117C

DVE DAVIDSON TOMMY 70G

DRT LONESOME PROUD MARY 321F

DVE DAVIDSON MS NAVAHO 75C

DRT LONESOME CELESTE 208B

actBW	adjWW	adjYW	CE	BW	WW	YW	MILK	TM	CEM	ST
89	703	1427	12.4	0.8	70	118	20	55	5	15.4

YG	CW	CREA	MARB	CFAT	COLOUR	POLLED STATUS
-0.24	28	0.48	-0.01	-0.07	HOMO BLACK	POLLED

Here comes a heavy hitter for performance, maternal strength, and overall smoothness. If you need a bull that can stride out and will put pounds on your calves, take a look at this guy. Out of a phenomenal Dam of Merit, this homozygous black power bull delivers—posting an impressive 5.10 lb ADG.



DRT 351N

DRT
377N

DRT LONESOME FREESTYLE 377N

CDGV190032 · FEB 20, 2025 · DRT 377N · PUREBRED 94%

DVE DAVIDSON VIP 84E

DRT LONESOME LUCKY SHOT 324G

DVE DAVIDSON TOMMY 70G

DRT LONESOME BUBBLY 238K

DVE DAVIDSON MS NAVAHO 75C

DRT LONESOME CHAMPAGNE 32F

actBW	adjWW	adjYW	CE	BW	WW	YW	MILK	TM	CEM	ST
84	691	1314	13.8	1.8	71	105	20	56	4	16.9

YG	CW	CREA	MARB	CFAT	COLOUR	POLLED STATUS
-0.09	22	0.26	0.27	-0.03	BLACK	HOMO POLLED

Easy-doing, deep, early-maturing, a bull that's really elevated and correct coming into his front end. His pedigree is jam-packed with docility, and grand-dam is a Dam of Merit. It's been exciting to watch him grow through the summer, he's proven to be consistent—he makes every day a good day. A really complete package.



DRT 377N

DRT
376N

DRT LONESOME DASHING 376N

CDGV190022 · FEB 20, 2025 · DRT 376N · PUREBRED 94%

DVE DAVIDSON VIP 84E

DVE DAVIDSON MACON 111C

DVE DAVIDSON TOMMY 70G

DRT LONESOME DANIELLE 206G

DVE DAVIDSON MS NAVAHO 75C

DRT DRT LONESOME BLANCHE 299E

actBW	adjWW	adjYW	CE	BW	WW	YW	MILK	TM	CEM	ST
84	689	1187	17.1	-1	51	68	18	44	5	16.2

YG	CW	CREA	MARB	CFAT	COLOUR	POLLED STATUS
-0.2	8	0.4	0.07	-0.03	BLACK	HOMO POLLED

Lengthy, really correct, he's a well-structured bull that carries plenty of punch. He received a lot of attention through the summer for his style and correctness, he's ready to go to work.

Join us for pre-sale viewing
and hospitality!
Closer to sale day, bulls are grouped
into smaller pens for easy viewing.

TOMMY 70G PROGENY



DRT 393N



DRT 395N



DRT 413N

Join us March 6th at
 11:00 am CST for lunch &
 1:00 pm CST for the sale.

DRT 393N



DRT LONESOME UNLOCK 393N

CDGV190025 • FEB 21, 2025 • DRT 393N • PUREBRED 94%

DVE DAVIDSON VIP 84E
DVE DAVIDSON TOMMY 70G
 DVE DAVIDSON MS NAVAHO 75C

DVE DAVIDSON EASTMAN 128E
DRT LONESOME SWEET TREAT 213J
 DRT LONESOME GODIVA 226F

actBW	adjWW	adjYW	CE	BW	WW	YW	MILK	TM	CEM	ST
83	912	1215	11.7	2.3	84	135	22	64	4	13.2

YG	CW	CREA	MARB	CFAT	COLOUR	POLLED STATUS
-0.15	48	0.63	0.08	-0.04	HOMO BLACK	POLLED

Here's a unique one—long-bodied, stout, and massive-hipped, backed by an incredible-uddered Eastman cow. Perfect-footed and homozygous black, this bull topped the entire pen with a 912 lb adjusted weaning weight. We exhibited him this fall and he drew plenty of attention, earning Champion Intermediate Bull Calf at CWA. No question, this is a big-time sale feature.

DRT 395N



DRT LONESOME HOMESTEAD 395N

CDGV190059 • FEB 22, 2025 • DRT 395N • PUREBRED 94%

DVE DAVIDSON VIP 84E
DVE DAVIDSON TOMMY 70G
 DVE DAVIDSON MS NAVAHO 75C

DVE DAVIDSON RUTTAN 117C
DRT LONESOME DARLENE 301G
 DRT LONESOME DARLING 33B

actBW	adjWW	adjYW	CE	BW	WW	YW	MILK	TM	CEM	ST
87	818	1333	11.3	0	70	108	24	59	5	14.3

YG	CW	CREA	MARB	CFAT	COLOUR	POLLED STATUS
-0.12	30	0.46	0.28	-0.02	HOMO BLACK	HOMO POLLED

An impactful bull that grabs you instantly with big features. Huge top, massive depth, big square hip, tons of bone, and all the look you want—this guy is a unit. Homo black, homo polled, and backed by an elite, big-bodied Dam of Merit with a perfect udder, awesome feet, and a sharp, up-headed front end. Every piece is in place for greatness.

DRT 413N



DRT LONESOME CRUSH IT 413N

CDGV190016 • FEB 24, 2025 • DRT 413N • PUREBRED 94%

DVE DAVIDSON VIP 84E
DVE DAVIDSON TOMMY 70G
 DVE DAVIDSON MS NAVAHO 75C

DVE DAVIDSON MACON 111C
DRT LONESOME AMUSE 188K
 DRT LONESOME THIS MOMENT 371H

actBW	adjWW	adjYW	CE	BW	WW	YW	MILK	TM	CEM	ST
84	763	1486	6	2.6	85	128	19	61	2	8.8

YG	CW	CREA	MARB	CFAT	COLOUR	POLLED STATUS
-0.18	32	0.48	-0.17	-0.05	HOMO BLACK	HOMO POLLED

This is Cam's top pick of the entire black offering, here's a breeder-type bull. A true herd bull prospect that simply stands out—long-bodied, athletic, and full of eye appeal. Bold-hipped with plenty of shape and look, clean-fronted with a nicely shaped head. Out of a gorgeous Macon cow, he's been the most consistent high-gaining bull in the pen.

DRT 418N



DRT LONESOME PLOT TWIST 418N

CDGV190031 • FEB 24, 2025 • DRT 418N • PUREBRED 94%

DVE DAVIDSON VIP 84E
DVE DAVIDSON TOMMY 70G
 DVE DAVIDSON MS NAVAHO 75C

DRT LONESOME HALL OF FAME 38X
DRT LONESOME FASHION WEEK 289F
 FRL FIR RIVER STACEY 237X

actBW	adjWW	adjYW	CE	BW	WW	YW	MILK	TM	CEM	ST
83	679	1238	16.1	-1.6	53	73	17	43	6	16.1

YG	CW	CREA	MARB	CFAT	COLOUR	POLLED STATUS
-0.3	11	0.51	0.18	-0.06	HOMO BLACK	HOMO POLLED

Rugged, growthy bull loaded with true muscle and thickness—this one is hard to miss in the pen. Soft-sided and easy doing, with great bone structure and excellent foot quality. He comes out of a sweet, moderate-framed Hall of Fame cow.

DRT
433N

DRT LONESOME JACK BENNY 433N

CDGV190066 · FEB 26, 2025 · DRT 433N · PUREBRED 94%

DVE DAVIDSON VIP 84E

DVE DAVIDSON MACON 111C

DVE DAVIDSON TOMMY 70G

DRT LONESOME 317J

DVE DAVIDSON MS NAVAHO 75C

DRT LONESOME RIVER 251G

actBW	adjWW	adjYW	CE	BW	WW	YW	MILK	TM	CEM	ST
84	660	1283	15.7	-1.8	53	70	17	43	4	17.9

YG	CW	CREA	MARB	CFAT	COLOUR	POLLED STATUS
-0.15	-3	0.19	0.01	-0.02	HOMO BLACK	SCURRED

He's long-bodied, full of dimension, and moves with ease on a sound, solid foot. Great in his structure, homozygous black, vigorous at birth, these Tommy bulls hit the mark, he's fertile, wide-topped and raised by an awesome, docile momma cow.



DRT 433N

DRT
439N

DRT LONESOME HOMELAND 439N

CDGV190017 · FEB 27, 2025 · DRT 439N · PUREBRED 94%

DVE DAVIDSON VIP 84E

DVE DAVIDSON EASTMAN 128E

DVE DAVIDSON TOMMY 70G

DRT LONESOME SOIREE 192J

DVE DAVIDSON MS NAVAHO 75C

DRT LONESOME PLUS-ONE 99F

actBW	adjWW	adjYW	CE	BW	WW	YW	MILK	TM	CEM	ST
85	685	1349	10.4	0.6	64	97	18	50	3	9.8

YG	CW	CREA	MARB	CFAT	COLOUR	POLLED STATUS
-0.31	35	0.7	-0.08	-0.08	HOMO BLACK	HOMO POLLED

A pen favorite—full of mass, fancy-fronted, and loaded with shape, volume, and thickness. Extremely docile, good-haired, and moderate-framed, he comes out of an incredible Eastman Dam of Merit with a perfect udder. Soft-centred and easy-doing, he's the total package.



DRT 439N

DRT
447N

DRT LONESOME BACKHAUL 447N

CDGV190013 · FEB 28, 2025 · DRT 447N · 88%

DVE DAVIDSON VIP 84E

DVE DAVIDSON JUMPSTART 44X

DVE DAVIDSON TOMMY 70G

DRT 176A

DVE DAVIDSON MS NAVAHO 75C

DRT LONESOME 76X

actBW	adjWW	adjYW	CE	BW	WW	YW	MILK	TM	CEM	ST
87	711	1454	8.8	-0.2	68	108	23	57	3	9.9

YG	CW	CREA	MARB	CFAT	COLOUR	POLLED STATUS
-0.03	44	0.33	0.12	-0.03	HOMO BLACK	SCURRED

Jam-packed with performance, growth, and punch, this bull holds the key to adding pounds. The highest-gaining bull in the pen with a 5.20 lb ADG, raised by a 12-year-old cow. Longevity, maternal capability, and performance are all stacked into this bull.



DRT 447N

DRT
489N

DRT LONESOME GALAXY 489N

CDGV190028 · MAR 8, 2025 · DRT 489N · PUREBRED 94%

DVE DAVIDSON VIP 84E

TIP MR EPIC 41E

DVE DAVIDSON TOMMY 70G

DRT LONESOME PLAY NICE 397G

DVE DAVIDSON MS NAVAHO 75C

DRT LONESOME LAYLA 30D

actBW	adjWW	adjYW	CE	BW	WW	YW	MILK	TM	CEM	ST
89	708	1399	10.1	-1.4	57	88	21	50	3	13.1

YG	CW	CREA	MARB	CFAT	COLOUR	POLLED STATUS
-0.08	45	0.39	0.09	-0.04	BLACK	HOMO POLLED

A classic power bull - full of important features like lots of bone, a big top, and a massive hind-quarter. Really lengthy, good-hided, and free-moving, this is a rugged, well-made bull.



DRT 489N

TOMMY 70G PROGENY



DRT 521N



DRT 534N



REFERENCE SIRE



DRT 52N

DRT 521N



DRT LONESOME HUMPHREY 521N

CDGV189925 · MAR 18, 2025 · DRT 521N · 88%

DVE DAVIDSON VIP 84E
DVE DAVIDSON TOMMY 70G
 DVE DAVIDSON MS NAVAHO 75C

LJL BLACK MAX 155Z
DRT LONESOME LAVINIA 8B
 DRT LONESOME MIDGE 11W

actBW	adjWW	adjYW	CE	BW	WW	YW	MILK	TM	CEM	ST
87	707	1335	6.2	0.3	66	95	20	53	3	12.1
YG	CW	CREA	MARB	CFAT	COLOUR		POLLED STATUS			
-0.14	41	0.44	-0.13	-0.05	HOMO BLACK		POLLED			

Moderate-framed, very well-balanced bull—clean fronted, nicely sheathed, and correct through his tailhead. Wide-topped, big-bellied, and stout, soggy-made, this homozygous black bull comes from the well-known, deep Lavinia 8B cow, who has had a long-time impact.

DRT 534N



DRT LONESOME NEXT GEN 534N

CDGV189924 · MAR 20, 2025 · DRT 534N · PUREBRED 94%

DVE DAVIDSON VIP 84E
DVE DAVIDSON TOMMY 70G
 DVE DAVIDSON MS NAVAHO 75C

DRT LONESOME HALL OF FAME 38X
DRT LONESOME TALLULAH
 DRT LONESOME VERDANA 7U

actBW	adjWW	adjYW	CE	BW	WW	YW	MILK	TM	CEM	ST
84	663	1192	14.5	-2.3	48	68	18	42	5	16.2
YG	CW	CREA	MARB	CFAT	COLOUR		POLLED STATUS			
-0.13	10	0.16	0.2	-0.04	BLACK		HOMO POLLED			

A correct, long-sided Tommy bull that is docile and sound from the ground up. He sets a solid foot and leg when in motion and comes from an incredible, dependable Hall of Fame cow that raises the bar year after year. Check out this young gun.

DVE 32G



DVE DAVIDSON STEADY 32G

CDGV169383 · FEB 5, 2019 · DVE 32G · PUREBRED 94%

FRL FIR RIVER SUBBAN 847A
FRL FIR RIVER COBALT
 FRL FIR RIVER MISS ZING

DDGR NAVAHO 188X
DVE DAVIDSON MS NAVAHO 56A
 DVE DAVIDSON MS B 107T

actBW	adjWW	adjYW	CE	BW	WW	YW	MILK	TM	CEM	ST
86	722	1344	15	0.1	57	76	22	50	6	16
YG	CW	CREA	MARB	CFAT	COLOUR		POLLED STATUS			
-0.16	25	0.40	0.200	-0.0400	HOMO BLACK		HOMO POLLED			

Steady is a long-time favourite sire, typically mated to a select group of top-end, elite females, including the Sapphire matriarchy. We can count on him to produce clean-fronted, smooth bulls that have a big foot underneath them. He has excellent feet and legs, and brings important traits such as length, depth, and overall capacity to his sons. He's versatile, and has sired some very excellent replacement females in our program. Backed by a foundational cow—just like his maternal brother Macon—Steady continues to make an immense, lasting impact on our program.

DRT 52N



DRT LONESOME WARRIOR 52N

CDGV190331 · FEB 1, 2025 · DRT 52N · PUREBRED 94%

FRL FIR RIVER COBALT
DVE DAVIDSON STEADY 32G
 DVE DAVIDSON MS NAVAHO 56A

DVE DAVIDSON JUBILEE 138F
DRT LONESOME HAVE & HOLD 242K
 DRT LONESOME BETTE 102E

actBW	adjWW	adjYW	CE	BW	WW	YW	MILK	TM	CEM	ST
77	657	1426	10.2	3.1	70	103	17	52	6	20.5
YG	CW	CREA	MARB	CFAT	COLOUR		POLLED STATUS			
-0.26	43	0.61	-0.03	-0.08	HOMO BLACK		HOMO POLLED			

This is Cameron's first purebred bull offering, and he's one to be proud of. With excellent shape, spring of rib, and length of body, this bull checks all the boxes. He is fault-free on the move - sound and built to cover big country and plenty of cows. Out of a maternally strong cow, he was born a twin. He was one of the fastest-gaining bulls in the pen with a 4.41lb ADG.

**DRT
296N****DRT LONESOME ON AIR 296N**

CDGV190293 · FEB 15, 2025 · DRT 296N · PUREBRED 94%

FRL FIR RIVER COBALT

DRT LONESOME YELLOWSTONE 175H

DVE DAVIDSON STEADY 32G

DRT LONESOME EISLA 9K

DVE DAVIDSON MS NAVAHO 56A

DRT LONESOME SATIN SLIPPER 293E

actBW	adjWW	adjYW	CE	BW	WW	YW	MILK	TM	CEM	ST
84	602	1219	14	2.7	54	73	19	46	6	18.2

YG	CW	CREA	MARB	CFAT	COLOUR	POLLED STATUS
-0.15	24	0.32	0.16	-0.04	HOMO BLACK	POLLED

This solid-made steady calf has done everything right -- homozygous black with length of rib and spine. He's deep-bodied, structurally correct, and moves freely on good feet and legs. He was raised by a striking Yellowstone cow, he stands out!



DRT 296N

**DRT
367N****DRT LONESOME CIRCLE BACK 367N**

CDGV190297 · FEB 20, 2025 · DRT 367N · PUREBRED 94%

FRL FIR RIVER COBALT

DVE DAVIDSON JUBILEE 138F

DVE DAVIDSON STEADY 32G

DRT DRT LONESOME LISBETH 77L

DVE DAVIDSON MS NAVAHO 56A

DRT LONESOME TEXT ME 208H

actBW	adjWW	adjYW	CE	BW	WW	YW	MILK	TM	CEM	ST
86	649	1355	10.8	-0.9	59	89	18	47	4	18.4

YG	CW	CREA	MARB	CFAT	COLOUR	POLLED STATUS
-0.09	23	0.33	0.05	-0.02	HOMO BLACK	HOMO POLLED

He's homo polled and homo black. Here's a smooth Steady bull that is good over his top, has nice testicular development, a good hide, lots of eye appeal, and full of maternal strength.



DRT 367N

**DVE
108L****DVE DAVIDSON RAINMAKER 108L**

CDGV182737 · FEB 16, 2023 · DVE 108L · PUREBRED 94%

VV CRAFTSMAN 23C

DRT LONESOME LOOKIN'GOOD 148Y

DL JEN-TY GOOD DEAL 150G

DVE DAVIDSON MS LOOKIN 34B

DL JEN-TY SHOW CASE 270U

DVE DAVIDSON MS SECRET 78U

actBW	adjWW	adjYW	CE	BW	WW	YW	MILK	TM	CEM	ST
86	723	1188	11	0.7	57	89	28	56	6	17

YG	CW	CREA	MARB	CFAT	COLOUR	POLLED STATUS
-0.22	19	0.54	-0.170	-0.040	RED	HOMO POLLED

We retained Rainmaker, a Good Deal son out of our proficient dam, DVE Davidson Ms Lookin 34B with 10 natural progeny to her credit! She achieved Dam of Merit for the years 2018 to 2022 and was a Dam of Distinction in 2023 and 2024. Reputable maternal strength at its very finest magnify in this herd bull and his expected contributions.

REFERENCE SIRE
Pictured at 11 months**DVE
41N****DVE DAVIDSON SHERLOCK 41N**

CDGV189582 · FEB 4, 2025 · DVE 41N · PUREBRED 94%

DL JEN-TY GOOD DEAL 150G

JM 57E

DVE DAVIDSON RAINMAKER 108L

DVE DAVIDSON MS EXCELL 48J

DVE DAVIDSON MS LOOKIN 34B

DVE DAVIDSON MS JOSH 31E

actBW	adjWW	adjYW	CE	BW	WW	YW	MILK	TM	CEM	ST
92	726	1289	8.5	2.1	78	119	25	64	6	16.2

YG	CW	CREA	MARB	CFAT	COLOUR	POLLED STATUS
-0.27	32	0.64	-0.16	-0.06	RED	HOMO POLLED

His dam, is DVE Davidson Ms Excell 48J. Born in early Feb/25 he has tested homozygous polled. With an ADG of 4.41 this young herd bull is readily getting his stride on! Expressive in all his being - he is so impressive in his volume, mass and his overall completeness.



DVE 41N

STEADY 32G PROGENY

RAINMAKER 108L PROGENY



DVE 87N

DVE DAVIDSON WATSON 87N

CDGV189639 · FEB 11, 2025 · DVE 87N · PUREBRED 94%

DL JEN-TY GOOD DEAL 150G
DVE DAVIDSON RAINMAKER 108L
 DVE DAVIDSON MS LOOKIN 34B

DVE DAVIDSON MANN 172E
DVE DAVIDSON MS MANN 188H
 DVE DAVIDSON MS COWBOY 57Z

actBW	adjWW	adjYW	CE	BW	WW	YW	MILK	TM	CEM	ST
86	609	1271	14.2	0.8	50	80	22	47	8	17.3
YG	CW	CREA	MARB	CFAT	COLOUR		POLLED STATUS			
-0.32	22	0.65	0.01	-0.06	RED		HOMO POLLED			

Homozygous polled and out of DVE Davidson Ms Mann 188H. Brothers to this sale lot are working for repeat buyers at both the University and at Comptons! She has also produced a lovely bred replacement heifer for us, a Mr daughter, DVE 145M, bred for early Feb/26!



DVE 105N

DVE DAVIDSON GUS 105N

CDGV189668 · FEB 13, 2025 · DVE 105N · PUREBRED 94%

DL JEN-TY GOOD DEAL 150G
DVE DAVIDSON RAINMAKER 108L
 DVE DAVIDSON MS LOOKIN 34B

JM 57E
DVE DAVIDSON MS EXCELL 127K
 DVE DAVIDSON MS HOSS 119D

actBW	adjWW	adjYW	CE	BW	WW	YW	MILK	TM	CEM	ST
86	709	1264	9.9	1.3	61	96	21	52	5	20.9
YG	CW	CREA	MARB	CFAT	COLOUR		POLLED STATUS			
-0.13	32	0.5	0.15	-0.02	RED		HOMO POLLED			

His very fertile dam, DVE Davidson Ms Excell 127K is a 4 year old, a long made mama, deep sided and gorgeous uddered. Just getting to her prime, she's making her mark with this captivating, February born bull! You'll have the option of keeping his daughters too. A bull so balanced, with that extra style - outstanding!



DVE 112N

DVE DAVIDSON 20/20 112N

CDGV189675 · FEB 13, 2025 · DVE 112N · PUREBRED 94%

DL JEN-TY GOOD DEAL 150G
DVE DAVIDSON RAINMAKER 108L
 DVE DAVIDSON MS LOOKIN 34B

DRT LONESOME BARTENDER 192G
DVE DAVIDSON MS BARTENDER 23K
 DVE DAVIDSON MS CADILLAC 29Y

actBW	adjWW	adjYW	CE	BW	WW	YW	MILK	TM	CEM	ST
86	681	1262	12.8	0.7	59	88	24	53	6	14.1
YG	CW	CREA	MARB	CFAT	COLOUR		POLLED STATUS			
-0.25	12	0.5	0.01	-0.04	RED		HOMO POLLED			

His Dam is DVE Davidson Bartender 23K is a good uddered young Mom all set to calve early again. Masculine, well muscled bull, not lacking in all his abilities.

Davidson Gelbvieh and Lonesome Dove Ranch work closely with their veterinarian to maintain **proper health protocols and up to date vaccinations**. Our bulls are fed a **balanced ration** with vitamins and minerals, as developed by our **professional nutritionist**, to achieve the best herd health and longevity. Davidson Gelbvieh and Lonesome Dove Ranch are both accredited through the **Verified Beef Production Plus** program.





DL JEN-TY GOOD DEAL 150G

CDGV169950 · FEB 14, 2019 · DL 150G · PUREBRED 94%

FRL FIR RIVER STAMKOS 879A

MMM CALBERTA RESOURCE 8307H

VV CRAFTSMAN 23C

DL JEN-TY SHOW CASE 270U

VV ZYNNE 78Z

DL JEN-TY PRECIOUS 33N

actBW	adjWW	adjYW	CE	BW	WW	YW	MILK	TM	CEM	ST
85	755	1395	12	0.6	57	94	15	43	5	20

YG	CW	CREA	MARB	CFAT	COLOUR	POLLED STATUS
-0.24	32	0.69	0.060	-0.050	RED	HOMO POLLED

With his enthralling mass, this eye appealing bull has proven his capabilities of producing progeny that we have seen reflected in the bull pen and as a good investment in our replacement heifer pen too! Good Deal was mated with some of our top performing females, the results speak for themselves! We look forward to 7 bred Good Deal females to lend to our calving pens this spring! A Good Deal son sold for \$16,000 at our 2025 bull sale for Wiebes commercial herd!



REFERENCE SIRE
Pictured as a Yearling



DVE DAVIDSON 0 GOOD 28N

CDGV189556 · FEB 1, 2025 · DVE 28N · 75%

VV CRAFTSMAN 23C

RED DKF RAZOR'S EDGE 3E

DL JEN-TY GOOD DEAL 150G

TIP TIP MISS HAILEE 25H

DL JEN-TY SHOW CASE 270U

TIP TIP MISS FAY 215F

actBW	adjWW	adjYW	CE	BW	WW	YW	MILK	TM	CEM	ST
85	683	1281	10	2.2	70	114	15	50	4	11.6

YG	CW	CREA	MARB	CFAT	COLOUR	POLLED STATUS
-0.17	35	0.44	0.09	-0.05	RED	HOMO POLLED

DVE Davidson 0 Good 28N was born a twin to a heifer calf. His beautiful dam, TIP 25H who we selected for her natural volume and her eye appeal, combine well with his sire Good Deal, to make for a good, homozygous polled born, all set to work! Darker red bull with all the goods!!



DVE 28N



DVE DAVIDSON STANLEY 211N

CDGV189590 · FEB 5, 2025 · DVE 211N · PUREBRED 94%

VV CRAFTSMAN 23C

DVE DAVIDSON TRUMP 63W

DL JEN-TY GOOD DEAL 150G

DVE DAVIDSON MS TRUMP 148E

DL JEN-TY SHOW CASE 270U

DVE DAVIDSON MS SECRET 152U

actBW	adjWW	adjYW	CE	BW	WW	YW	MILK	TM	CEM	ST
88	717	1309	13.2	0.2	57	77	24	52	5	19.2

YG	CW	CREA	MARB	CFAT	COLOUR	POLLED STATUS
-0.18	22	0.51	0.14	-0.03	RED	HOMO POLLED

Good Deal sired and out of DVE Davidson Ms Trump 148E, our proficient 8 year old matriarch, all set to calve at the beginning of the season once again! One of her sons is at work for a repeat client in Mexico! We have retained one of her daughters, DVE 72L and her daughter too - DVE 91N. With an adjusted yearling weight of 1309 lbs, he had an ADG of 4.02 and WDA of 3.55. Homozygous polled, very thick made bull, expressive in his big top and depth of side!



DVE 211N



DVE DAVIDSON BRIGHTLITES 66N

CDGV189615 · FEB 8, 2025 · DVE 66N · PUREBRED 94%

VV CRAFTSMAN 23C

DVE DAVIDSON FUEL 87D

DL JEN-TY GOOD DEAL 150G

DVE DAVIDSON MS FUEL 44F

DL JEN-TY SHOW CASE 270U

DVE DAVIDSON MS TRUMP 57C

actBW	adjWW	adjYW	CE	BW	WW	YW	MILK	TM	CEM	ST
95	792	1460	3.7	1.2	76	114	24	62	2	21

YG	CW	CREA	MARB	CFAT	COLOUR	POLLED STATUS
-0.24	57	0.9	0.14	-0.06	RED	HOMO POLLED

Bred to produce pounds come weaning, this early February born, homozygous polled bull, has the makings for many a discriminating cattle producer! WDA of 3.97 and ADG of 4.80. His proficient dam was quantified a Dam of Merit in 2023, 2024 and 2025! A dark red bull, looking just right from his head to his rump!



DVE 66N

GOOD DEAL 150G PROGENY



DVE DAVIDSON RED DR 93N

CDGV189661 · FEB 11, 2025 · DVE 93N · PUREBRED 94%

VV CRAFTSMAN 23C
DL JEN-TY GOOD DEAL 150G
 DL JEN-TY SHOW CASE 270U

JM 57E
DVE DAVIDSON MS EXCELL 194G
 DVE DAVIDSON MS TRUMP 111D

actBW	adjWW	adjYW	CE	BW	WW	YW	MILK	TM	CEM	ST
92	725	1437	6.1	2.4	67	101	23	56	5	20.2
YG	CW	CREA	MARB	CFAT	COLOUR		POLLED STATUS			
-0.15	44	0.64	0.17	-0.04	RED		HOMO POLLED			

A pedigree that breeds true, with an ADG of 4.31 and WDA of 3.84, these Good Deal sired bulls don't hold back ... a 1437 lb. adjusted yearling weight, with all the making of a good cow bull, he is homozygous polled and bred to produce progeny that weigh up come fall! His Dam, a Dam of Merit in 23, 24, & 25 has produced two replacement females, DVE 209K and DVE 85M, with both of them set to calve here, at the very beginning of the calving season! Mild mannered, he has the length and eye appeal!



DVE DAVIDSON RED TOM 167N

CDGV189729 · FEB 27, 2025 · DVE 167N · PUREBRED 94%

VV CRAFTSMAN 23C
DL JEN-TY GOOD DEAL 150G
 DL JEN-TY SHOW CASE 270U

DVE DAVIDSON TRUE GRIT 95E
DVE DAVIDSON MS TRUE GRIT 43H
 DVE DAVIDSON MS SECRET 109A

actBW	adjWW	adjYW	CE	BW	WW	YW	MILK	TM	CEM	ST
98	797	1527	5.1	2.4	78	119	24	62	4	13.1
YG	CW	CREA	MARB	CFAT	COLOUR		POLLED STATUS			
-0.18	68	0.93	0.15	-0.05	RED		HOMO POLLED			

He is one of the big boys tipping the scale with an adjusted yearling weight of 1527 lbs., ADG of 4.41 and WDA of 4.13, this cow bull is out of DVE 43H a darker red mama, a Dam of Merit in 2024 and 2025 and set to do it all over again in 2026! We have retained one of her daughters DVE 115M, set to calve at the very beginning of the season.

*Call ahead
 to tour through
 the bull pen anytime,
 visitors are always welcome!*

PRODUCTIVE, FERTILE COWS REMAIN THE FOUNDATION OF THE BEEF BUSINESS

The bulls on offer are raised by females that produce, maintain sound udders and feet, and raise a calf every year. In 2025, the Canadian Gelbvieh Association ranked **Davidson Gelbvieh** as number one in the registry for owning **28 Dams of Merit** and **4 Dams of Distinction**. **Lonesome Dove Ranch** was recognized for owning and breeding **16 Dams of Merit**.



**DRT
374K****DRT LONESOME HOME STRETCH 374K**

CDGV180109 · MAR 7, 2022 · DRT 374K · PUREBRED 94%

DVE DAVIDSON FUEL 87D

DVE DAVIDSON RUTTAN 117C

DVE DAVIDSON JUBILEE 138F

DRT LONESOME MOONFLOWER 266E

DVE DAVIDSON MS JAY 74C

DRT SABRINA 3S

actBW	adjWW	adjYW	CE	BW	WW	YW	MILK	TM	CEM	ST
88	697	1244	11	1.7	67	108	12	46	4	16

YG	CW	CREA	MARB	CFAT	COLOUR	POLLED STATUS
-0.26	29	0.57	0.050	-0.070	HOMO BLACK	HOMO POLLED

We purchased this herd bull from Lonesome Dove Ranch! A perfect package of homo polled and homo black, a maternal brother to Cameron's 4-H heifer in 2023. Maternally backed by influential dams, look for added length and a presence that makes for a consistent group of stellar progeny.

REFERENCE SIRE
DVE 183N - Home Stretch son**DVE
53N****DVE DAVIDSON SANDMAN 53N**

CDGV189595 · FEB 6, 2025 · DVE 53N · PUREBRED 94%

DVE DAVIDSON JUBILEE 138F

DVE DAVIDSON COWBOY 20U

DRT LONESOME HOME STRETCH 374K DVE DAVIDSON MS COWBOY 145G

DRT LONESOME MOONFLOWER 266E

DVE DAVIDSON MS SECRET 111Y

actBW	adjWW	adjYW	CE	BW	WW	YW	MILK	TM	CEM	ST
84	632	1131	17	-1.6	55	79	15	42	6	17.1

YG	CW	CREA	MARB	CFAT	COLOUR	POLLED STATUS
-0.16	6	0.28	0.07	-0.02	BLACK	HOMO POLLED

Out of a cow with ample capacity and a beautiful udder! Keeping heifers out of this bull would be a great option! She is soon to be 7 years old and has produced 5 calves to date, one a year and every year, including herd sires for repeat buyers Kassians and Schruders too!



DVE 53N

**DVE
85N****DVE DAVIDSON BOUNTY 85N**

CDGV189637 · FEB 11, 2025 · DVE 85N · PUREBRED 94%

DVE DAVIDSON JUBILEE 138F

DVE DAVIDSON VIP 84E

DRT LONESOME HOME STRETCH 374K DVE DAVIDSON 1MS V.I.P. 79K

DRT LONESOME MOONFLOWER 266E

DVE DAVIDSON MS NAVAHO 56A

actBW	adjWW	adjYW	CE	BW	WW	YW	MILK	TM	CEM	ST
92	740	1266	9.2	2.5	69	106	16	50	4	16

YG	CW	CREA	MARB	CFAT	COLOUR	POLLED STATUS
-0.18	30	0.39	-0.07	-0.06	HOMO BLACK	HOMO POLLED

Homozygous black, homozygous polled, with a 740 lb. adjusted weaning and a 1266 lb. adjusted yearling, this February-born bull is out of DVE 179K, a direct daughter of our famed matriarch DVE Davidson Ms Navaho 56A that has and is producing awesome progeny - herd bulls like Macon 111C and Steady 326. Level topped, bred right, he'll perform right!



DVE 85N

**DVE
106N****DVE DAVIDSON WESTIN 106N**

CDGV189669 · FEB 13, 2025 · DVE 106N · PUREBRED 94%

DVE DAVIDSON JUBILEE 138F

DVE DAVIDSON HISGIFT 166F

DRT LONESOME HOME STRETCH 374K DVE DAVIDSON MS HISGIFT 175K

DRT LONESOME MOONFLOWER 266E

DVE DAVIDSON MS B 66D

actBW	adjWW	adjYW	CE	BW	WW	YW	MILK	TM	CEM	ST
92	720	1380	10.6	2.1	73	106	18	55	3	12.1

YG	CW	CREA	MARB	CFAT	COLOUR	POLLED STATUS
-0.35	28	0.68	-0.08	-0.09	BLACK	POLLED

The proof is in the pudding and we like the pudding, his dam is DVE Davidson Ms Hisgift 175K. With an adjusted weaning of 720 lbs. and a 1380 lb adjusted yearling weight this sale lot is set to lend those same growth traits in his calves!



DVE 106N

HOME STRETCH 374K PROGENY



DVE 132N

DVE 132N

DVE DAVIDSON INTUITION 132N

CDGV189695 • FEB 17, 2025 • DVE 132N • PUREBRED 94%

DVE DAVIDSON JUBILEE 138F

DDGR NAVAHO 188X

DRT LONESOME HOME STRETCH 374K DVE DAVIDSON MS 33D

DRT LONESOME MOONFLOWER 266E

DVE DAVIDSON MS JIM 153R

actBW	adjWW	adjYW	CE	BW	WW	YW	MILK	TM	CEM	ST
87	726	1354	11.1	-0.6	68	100	20	54	4	16.4

YG	CW	CREA	MARB	CFAT	COLOUR	POLLED STATUS
-0.17	20	0.31	0.04	-0.05	HOMO BLACK	HOMO POLLED

His dam, DVE Davidson Ms Navaho 33D, a proficient producer, has had 8 natural progeny, including offspring we've sold to Chambers and Warts. With a 726 lb adjusted weaning and a 1354 lb adjusted yearling weight you can look for a bull that will produce pounds. A proud-looking bull, homozygous black and homozygous polled, a real culmination of proven genetics - a bull with expressive appeal and mass!



DVE 171N

DVE 171N

DVE DAVIDSON HANDYHANK 171N

CDGV189733 • MAR 1, 2025 • DVE 171N • PUREBRED 94%

DVE DAVIDSON JUBILEE 138F

DVE DAVIDSON U-BETCHA 174A

DRT LONESOME HOME STRETCH 374K DVE DAVIDSON MS U-BETCHA 188E

DRT LONESOME MOONFLOWER 266E

DVE DAVIDSON MS TEQUILA 50T

actBW	adjWW	adjYW	CE	BW	WW	YW	MILK	TM	CEM	ST
88	750	1390	13.1	1.6	66	95	16	49	3	12.9

YG	CW	CREA	MARB	CFAT	COLOUR	POLLED STATUS
-0.25	38	0.66	0.12	-0.06	BLACK	HOMO POLLED

Out of a Dam of Merit in 2025, his dam is DVE Davidson U-betcha 188E. She has had 7 natural progeny to date and is set for the beginning of the calving season once again. This is the first bull calf she has had, and we have retained two daughters, DVE 26G and DVE 114M, both set to calve in the spring! This sale lot offers consistent growth with just under 4.00 lbs a day, and a 750 lb adj weaning and a 1390 lb adj yearling!!



DVE 183N

DVE 183N

DVE DAVIDSON GALANT 183N

CDGV189741 • MAR 7, 2025 • DVE 183N • PUREBRED 94%

DVE DAVIDSON JUBILEE 138F

DVE DAVIDSON VIP 84E

DRT LONESOME HOME STRETCH 374K DVE DAVIDSON MS V.I.P. 124K

DRT LONESOME MOONFLOWER 266E

DVE DAVIDSON MS COBALT 100F

actBW	adjWW	adjYW	CE	BW	WW	YW	MILK	TM	CEM	ST
82	745	1362	12.8	-0.4	62	100	16	47	5	13.6

YG	CW	CREA	MARB	CFAT	COLOUR	POLLED STATUS
-0.23	22	0.46	0.03	-0.06	HOMO BLACK	HOMO POLLED

Homozygous black and homozygous polled, we like a lot of things about this growthy bull...745 lb adj weaning, and a 1362 lb adj yearling, he is hitting the mark and then some! We work along with our Nutritionist team to be sure these bulls will be practical producers for the long haul!



DVE 184N

DVE 184N

DVE DAVIDSON COMING HOME 184N

CDGV189745 • MAR 12, 2025 • DVE 184N • PUREBRED 94%

DVE DAVIDSON JUBILEE 138F

JM 57E

DRT LONESOME HOME STRETCH 374K DVE DAVIDSONMS EXCELL 164K

DRT LONESOME MOONFLOWER 266E

DVE DAVIDSON MS COWBOY 158E

actBW	adjWW	adjYW	CE	BW	WW	YW	MILK	TM	CEM	ST
84	730	1396	13.7	-0.1	63	97	19	50	6	17.7

YG	CW	CREA	MARB	CFAT	COLOUR	POLLED STATUS
-0.21	27	0.46	0.16	-0.06	BLACK	HOMO POLLED

Out of a red cow, DVE Davidson Ms Excell 164K, this homozygous polled bull has is all going on with an ADJ weaning of 730 lbs and a 1396 ADJ yearling weight!



JM 57E

CDGV161664 · JAN 25, 2017 · JM 57E · PUREBRED 94%

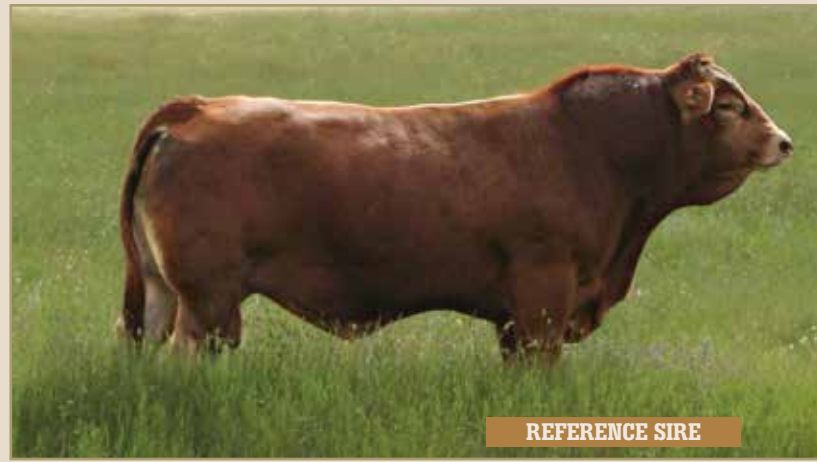
FRL FIR RIVER RED CHILLI 451Y
DL BIG DEAL 35B
DL JEN-TY 178S

SLC MERV 12N
JM CHERRY BOMB 9C
JM AMBER 94A

actBW	adjWW	adjYW	CE	BW	WW	YW	MILK	TM	CEM	ST
83	859	1380	10	1.3	74	107	26	63	4	24

YG	CW	CREA	MARB	CFAT	COLOUR	POLLED STATUS
-0.26	32	0.77	0.060	-0.040	RED	HOMO POLLED

It is always costly to purchase the bull you want, but a good one pays for himself double-quick he's that kind of bull! Super eye appealing, with calving ease and ease of fleshing, we have retained and are so appreciating his many daughters too - 22 direct daughters are due here in Feb. 2026, and he is 9 years old. We exhibited DVE Davidson Kramer 46J, a JM 57E son, and he achieved the 2021 Reserve National Senior Bull Calf Division, in 2022. He was named the Junior Champion Bull, at Canadian Western Agribition. Another son DVE Davidson Steady Eddy 47H was selected by the Lonesome Dove Ranch and he has complimented their program very well!



REFERENCE SIRE



DVE DAVIDSON DENVER 63N

CDGV189612 · FEB 8, 2025 · DVE 63N · PUREBRED 94%

DL BIG DEAL 35B
JM 57E
JM JM CHERRY BOMB 9C

DVE DAVIDSON HISGIFT 166F
DVE DAVIDSON MS HISGIFT 158H
DVE DAVIDSON MS COWBOY 1C

actBW	adjWW	adjYW	CE	BW	WW	YW	MILK	TM	CEM	ST
86	721	1334	8	2.0	79	118	24	64	3	19

YG	CW	CREA	MARB	CFAT	COLOUR	POLLED STATUS
-0.25	54	0.84	-0.030	-0.060	RED	HOMO POLLED

Born in early February, with an adjusted yearling weight of 1334 lbs., he is homozygous polled and out of DVE 158H, a Hisgift daughter bred early once again! One of her daughters, DVE 26M will calve here early as well. Fertility, an inherit family trait that pays!



DVE 63N



DVE DAVIDSON HILLBILLY 135N

CDGV189698 · FEB 17, 2025 · DVE 135N · PUREBRED 94%

DL BIG DEAL 35B
JM 57E
JM JM CHERRY BOMB 9C

BNH FACE YOUR DESTINY 16F
DVE DAVIDSON MS DESTINY 38J
DVE DAVIDSON MS DRILLER 41G

actBW	adjWW	adjYW	CE	BW	WW	YW	MILK	TM	CEM	ST
97	725	1381	6.9	4.4	82	115	20	62	3	19.9

YG	CW	CREA	MARB	CFAT	COLOUR	POLLED STATUS
-0.29	44	0.84	-0.05	-0.07	RED	HOMO POLLED

Checking all the boxes, this cow bull will produce come weaning! His adjusted yearling of 1381 lbs spells out power, yet his dam and his sister add the bonus of good fertility traits too - DVE 113M, his sister will join the ranks in our replacement pen this season. " Sugar Plum," as nicknamed by Jaime, is a deep sided, easy on the eye kinda bull!



DVE 135N



DVE DAVIDSON TRAILBOSS 137N

CDGV189700 · FEB 18, 2025 · DVE 137N · PUREBRED 94%

DL BIG DEAL 35B
JM 57E
JM JM CHERRY BOMB 9C

BLB GOODVIEW PLD AXIAL
RPS DARLING
RPS BURGANDY

actBW	adjWW	adjYW	CE	BW	WW	YW	MILK	TM	CEM	ST
96	708	1370	6.9	2.9	75	112	24	61	4	18.4

YG	CW	CREA	MARB	CFAT	COLOUR	POLLED STATUS
-0.21	35	0.64	0.03	-0.04	RED	POLLED

His beautiful dam, RPS 11D, with 9 progeny to her credit, was awarded Dam of Distinction in 2024 and 2025 by the Canadian Gelbvieh Association for her superior production! We have sold a brother of this lot to repeat buyers the Frys, and retained a daughter DVE 137K, with DVE 65N her Optimist son, offered in this sale too. DVE 137N amplifies consistent growth with an adjusted yearling weight of 1370 lbs! A darker red a bull with a bold expressive looks, ample bone, ample testicle development and is smooth shouldered.



DVE 137N

JM 57E PROGENY



DVE 153N

DVE 153N

DVE DAVIDSON MANAGE IT 153N

CDGV189716 · FEB 21, 2025 · DVE 153N · PUREBRED 94%

DL BIG DEAL 35B
JM 57E

DVE DAVIDSON DUNNIT 25C
DVE DAVIDSON MS DUNN 55G
DVE DAVIDSON MS TRUMP 30C

actBW	adjWW	adjYW	CE	BW	WW	YW	MILK	TM	CEM	ST
88	749	1368	13.4	-1.2	54	70	24	51	5	15.3
YG	CW	CREA	MARB	CFAT	COLOUR		POLLED STATUS			
-0.22	32	0.66	0.01	-0.04	RED		HOMO POLLED			

His mother will calve early once again and he has set a good pace himself, with a 1386 lb adjusted yearling and an 88 lb birth weight. You know your cows, pick and choose the credentials that will work for you! His homozygous polled abilities are a good bonus. An extremely long sided bull that is well put together.



DVE 164N

DVE 164N

DVE DAVIDSON FRESHCOFFEE 164N

CDGV189727 · FEB 26, 2025 · DVE 164N · PUREBRED 94%

DL BIG DEAL 35B
JM 57E

DVE DAVIDSON U-BETCHA 174A
DVE DAVIDSON MS UBET 31G
DVE DAVIDSON MS SECRET 152U

actBW	adjWW	adjYW	CE	BW	WW	YW	MILK	TM	CEM	ST
86	732	1316	12.5	1.2	63	84	26	57	3	17.2
YG	CW	CREA	MARB	CFAT	COLOUR		POLLED STATUS			
-0.17	22	0.28	0.14	-0.05	RED		HOMO POLLED			

Consistent inherit traits make for the combinations that grows! He is homozygous polled, with a 1316 lb adjusted yearling weight and out of DVE 31G, a U-betcha daughter, claiming Dam of Merit status in 2023 and 2024! Ample in his whole package, a bull with abundant mass and appeal!



REFERENCE SIRE

DVE 173J

DVE DAVIDSON BREWSTER 173J

CDGV175590 · MAR 10, 2021 · DVE 173J · PUREBRED 94%

DVE DAVIDSON CROWELL 175B
DVE DAVIDSON VIP 84E
DVE DAVIDSON MS ROMANCE 28Z

DVE DAVIDSON BENTLEY 78B
DVE DAVIDSON MS BENTLEY 77F
DVE DAVIDSON MS READY 92C

actBW	adjWW	adjYW	CE	BW	WW	YW	MILK	TM	CEM	ST
84	696	1231	16	-1.7	40	61	21	41	8	14
YG	CW	CREA	MARB	CFAT	COLOUR		POLLED STATUS			
-0.17	20	0.32	0.070	-0.040	HOMO BLACK		HOMO POLLED			

Brewster was used exclusively on heifers, and he has proven to be a calving ease dream. His standout traits include docility, added length of body, and the ability to pack thickness onto a moderate frame without sacrificing dimension or capacity. His sons averaged just 72 pounds at birth, and then went on to post an impressive 4.14 pound ADG across the group. This is our first group of Brewster sons offered for sale, and the entire offering is homozygous polled - making them an easy fit for a wide range of breeding programs.



DRT 114N

DRT 114N

DRT LONESOME ERA 114N

CDGV190048 · FEB 6, 2025 · DRT 114N · PUREBRED 94%

DVE DAVIDSON VIP 84E
DVE DAVIDSON BREWSTER 173J
DVE DAVIDSON MS BENTLEY 77F

DVE DAVIDSON HAT TRICK 50J
DRT DRT LONESOME CONSTANCE 275L
DRT LONESOME AUBREY

actBW	adjWW	adjYW	CE	BW	WW	YW	MILK	TM	CEM	ST
70	599	1203	17.5	-4.1	30	40	20	34	9	9.1
YG	CW	CREA	MARB	CFAT	COLOUR		POLLED STATUS			
-0.12	4	0.01	0.24	-0.04	BLACK		HOMO POLLED			

Moderate framed with steady, efficient growth, this bull posted a 4+ lb ADG and started life with exceptional calving ease at 70 lb. His young Hat Trick dam is already showing tremendous potential.

**DRT
124N****DRT LONESOME HEADSHOT 124N**

CDGV189999 • FEB 6, 2025 • DRT 124N • PUREBRED 94%

DVE DAVIDSON VIP 84E

DRT LONESOME PAYCE 162J

DVE DAVIDSON BREWSTER 173J

DRT DRT LONESOME SWEET TREAT 127L

DVE DAVIDSON MS BENTLEY 77F

DRT LONESOME SWEET TREAT 213J

actBW	adjWW	adjYW	CE	BW	WW	YW	MILK	TM	CEM	ST
70	647	1355	18.7	-2.2	43	59	21	42	8	11.3

YG	CW	CREA	MARB	CFAT	COLOUR	POLLED STATUS
-0.15	5	0.24	0.2	-0.02	BLACK	HOMO POLLED

Brewster sons are proving themselves to be smooth-made and moderate yet thick. With a birth weight of 70lb and gaining 4.31lb per day, this bull delivers the best of both worlds.



DRT 124N

**DRT
162N****DRT LONESOME COUNTRY CLUB 162N**

CDGV190069 • FEB 8, 2025 • DRT 162N • PUREBRED 94%

DVE DAVIDSON VIP 84E

DVE DAVIDSON TOMMY 70G

DVE DAVIDSON BREWSTER 173J

DRT DRT LONESOME ALONDRA 339L

DVE DAVIDSON MS BENTLEY 77F

RPS DALMA

actBW	adjWW	adjYW	CE	BW	WW	YW	MILK	TM	CEM	ST
72	649	1348	15.5	-2.8	45	75	21	44	7	18.9

YG	CW	CREA	MARB	CFAT	COLOUR	POLLED STATUS
-0.21	11	0.32	0.18	-0.05	HOMO BLACK	HOMO POLLED

A true calving ease prospect, this bull is both homozygous black and homozygous polled. He combines impressive gains with a maternally-focused pedigree on his dam's side. You can buy a membership to this Country Club!

Join us for pre-sale viewing and hospitality! Closer to sale day, bulls are grouped into smaller pens for easy viewing.

**DRT
163N****DRT LONESOME INSIDER 163N**

CDGV189937 • FEB 8, 2025 • DRT 163N • PUREBRED 94%

DVE DAVIDSON VIP 84E

DRT LONESOME YELLOWSTONE 175H

DVE DAVIDSON BREWSTER 173J

DRT DRT LONESOME ONYX 27L

DVE DAVIDSON MS BENTLEY 77F

DRT LONESOME ONYX 236F

actBW	adjWW	adjYW	CE	BW	WW	YW	MILK	TM	CEM	ST
74	706	1340	15.3	-0.7	49	73	22	46	7	15.8

YG	CW	CREA	MARB	CFAT	COLOUR	POLLED STATUS
-0.28	19	0.52	0.27	-0.06	HOMO BLACK	HOMO POLLED

An excellent calving-ease option, this homozygous polled, homozygous black bull was raised by a clean-fronted, fertile Yellowstone first-calf heifer.

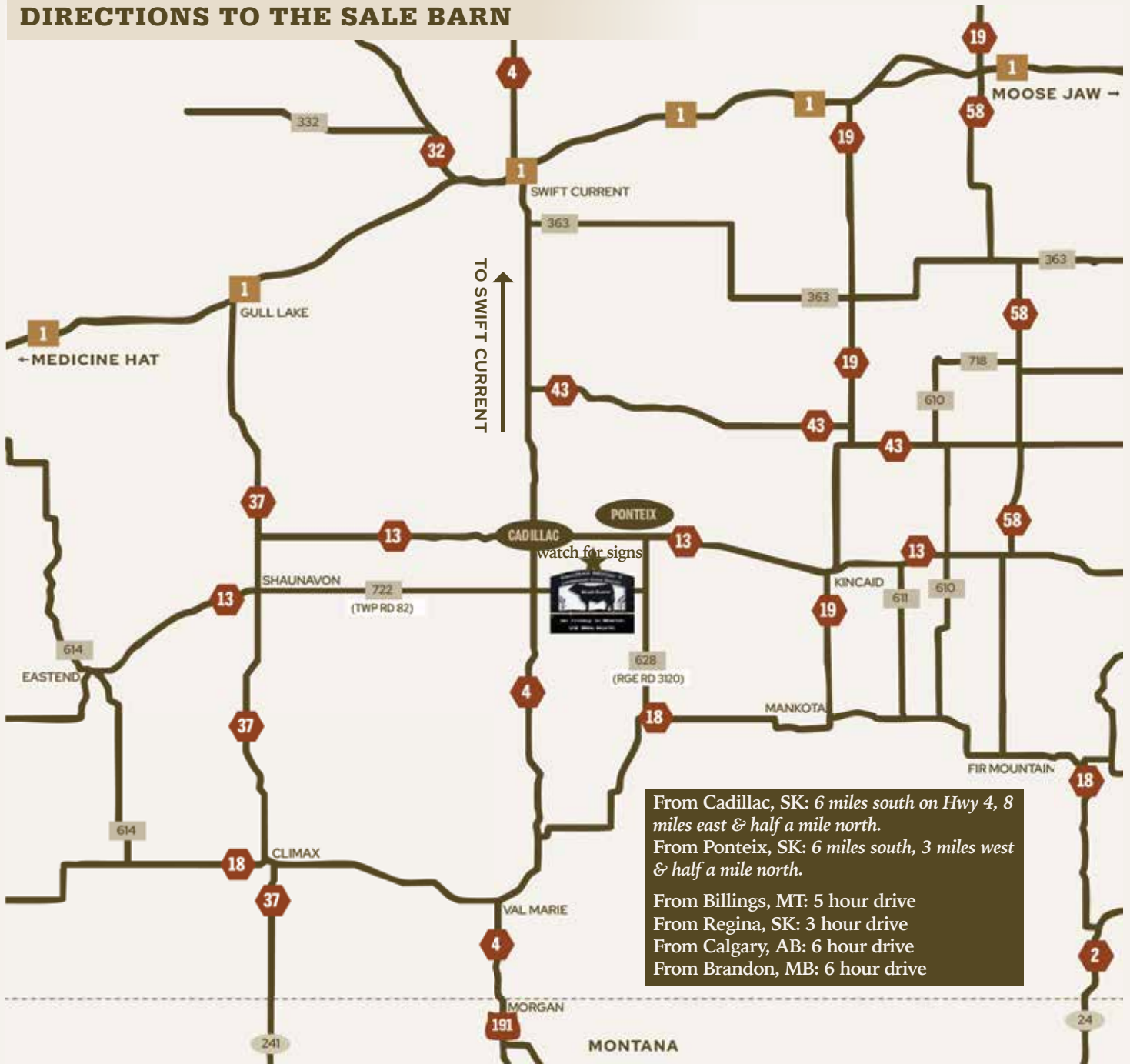


DRT 163N

*Find videos and more information on bulls at
www.davidsongelbvieh.com
& www.lonesomedoveranch.ca*



DIRECTIONS TO THE SALE BARN



UPCOMING EVENTS

- JULY 22 - 25, 2026** Canadian Junior Gelbvieh Show - Stettler, AB
- THURSDAY, OCTOBER 29, 2026** Gelbvieh-Cross Calf Sale Heartland Livestock, Swift Current, SK. (306) 773-3174
- FRIDAY, OCTOBER 30, 2026** Gelbvieh-Cross Calf Sale, Medicine Hat Feeding Company, Medicine Hat, AB. (403) 526-3129
- FRIDAY, MARCH 5, 2027** 38th Annual Davidson Gelbvieh & Lonesome Dove Ranch Bull Sale

*See You
Sale Day!*



TABLE OF CONTENTS

TATTOO	PAGE	TATTOO	PAGE	TATTOO	PAGE	TATTOO	PAGE
DVE 3N	10	DVE 90N	17	DVE 173N	4	DRT 263N	14
DVE 4N	7	DVE 93N	32	DVE 174N	13	DRT 282N	24
DVE 10N	16	DVE 94N	22	DVE 183N	34	DRT 286N	25
DVE 18N	16	DVE 96N	12	DVE 184N	34	DRT 296N	29
DVE 21N	16	DVE 105N	30	DVE 185N	13	DRT 316N	15
DVE 24N	10	DVE 106N	33	DVE 186N	5	DRT 319N	9
DVE 28N	31	DVE 112N	30	DVE 189N	5	DRT 328N	6
DVE 30N	10	DVE 117N	17	DVE 193N	24	DRT 351N	25
DVE 33N	11	DVE 120N	7	DVE 200N	13	DRT 362N	9
DVE 39N	21	DVE 122N	23	DVE 202N	17	DRT 367N	29
DVE 41N	29	DVE 128N	18	DVE 203N	4	DRT 374N	19
DVE 42N	7	DVE 132N	34	DVE 211N	31	DRT 376N	25
DVE 46N	19	DVE 133N	23	DRT 2N	24	DRT 377N	25
DVE 49N	22	DVE 134N	4	DRT 33N	8	DRT 393N	26
DVE 50N	22	DVE 135N	35	DRT 52N	28	DRT 395N	26
DVE 53N	33	DVE 136N	20	DRT 64N	14	DRT 411N	6
DVE 55N	20	DVE 137N	35	DRT 92N	18	DRT 412N	15
DVE 60N	12	DVE 144N	20	DRT 114N	36	DRT 413N	26
DVE 63N	35	DVE 147N	21	DRT 124N	37	DRT 418N	26
DVE 65N	11	DVE 148N	21	DRT 131N	19	DRT 433N	27
DVE 66N	31	DVE 149N	23	DRT 134N	5	DRT 434N	9
DVE 67N	17	DVE 153N	36	DRT 138N	14	DRT 439N	27
DVE 68N	11	DVE 156N	23	DRT 162N	37	DRT 447N	27
DVE 83N	20	DVE 160N	18	DRT 163N	37	DRT 459N	15
DVE 85N	33	DVE 164N	36	DRT 170N	24	DRT 489N	27
DVE 86N	11	DVE 167N	32	DRT 171N	8	DRT 519N	6
DVE 87N	30	DVE 169N	7	DRT 189N	8	DRT 521N	28
DVE 88N	22	DVE 171N	34	DRT 245N	6	DRT 534N	28

RIGHTS AND OBLIGATIONS - The terms and conditions of the sale shall constitute a contract between the buyer and the seller and be equally binding on both parties. Animals resold following purchase in this sale constitute a separate transaction and the rights and obligations of the two parties connected thereto are not covered by the terms and conditions of this sale.

ANNOUNCEMENTS - Announcements from the auction block will take precedence over printed material in this catalog. Buyers are therefore cautioned to pay attention to any such announcements.

BIDDING - Animals will be sold singly or in lots to the highest bidder. Bidding will be carried out in Canadian dollars.

AUCTIONEER - The auctioneer will settle any disputes as to bids and his decision on such matters will be final. The auctioneer will have the right to refuse bids from anyone who has a previous record of default in payment or who has not made proper credit clearance prior to the sale.

RISK - Cattle are at the buyer's risk as soon as sold but every precaution will be taken for their welfare.

TERMS - The terms of the sale are cash or cheque payable on sale day at par at sale location. The current rate of exchange as of sale day will apply to purchases made by U.S. buyers. Parties unknown to the sale manager desiring to settle by personal cheque, should bring a letter of identification from their bankers. The right of property shall not pass

until after full settlement is made. All settlements must be made with sale clerks before any cattle will be released.

DELIVERY - Delivery at cost within the Prairie Provinces or nearest point of entry within the Prairie Provinces as soon as possible after the sale at the seller's convenience and the buyer's risk. Special consideration maybe given to group purchases. Written instructions must be given at time of settlement. Cattle are the property of the buyer as soon as the auctioneer declares them sold therefore buyers are urged to insure animals for full value.

CERTIFICATE OF REGISTRATION - Each animal will carry registration papers issued by the Canadian Gelbvieh Association and will be furnished in the name of the new owner after full settlement has been made. Every bull purchaser, outside of Canada, has the sole responsibility to investigate home country registration, on desired sale lots, and level of re-registration in home country, prior to purchase.

BREEDER'S GUARANTEE - All cattle sold at our sale are veterinary-inspected prior to the sale and are fully insurable on sale day. Each bull sells sale day along with a valid semen test as provided by a licensed Veterinarian. We suggest you buy full mortality and fertility insurance on your bull purchases. A fertile bull can lose his ability to settle cattle therefore prudent management of your breeding bulls' overall health is very important, especially throughout the breeding season. Watch

your young bulls breeding activity early in the breeding season and don't let an older bull intimidate his actions. Our warranties do not cover bull injuries or sickness not apparent sale day or guarantee that bulls will produce semen that will freeze. All cattle sold sale day are the full responsibility of the new owner. Any issues must be reported in writing, within 6 months of sale time to Davidson Gelbvieh and Lonesome Dove Ranch and are to be accompanied by a Veterinarian's Certificate. **BULLS LEFT FOR LATER DELIVERY ARE DONE SO AT THE BUYER'S RISK. INSURANCE ON PURCHASES IS THE RESPONSIBILITY OF THE BUYER.** At no time will the breeders Davidson Gelbvieh or Lonesome Dove Ranch be liable for a credit more than the original purchase price. Homozygous black and homozygous polled animals included in this sale are as reported by and reliant upon the results from qualified labs in Canada and the U.S.

SOLICITING - Promotion of cattle, other than those in the sale, is frowned upon and considered an unethical practice during any sale.

ACCIDENTS - although every precaution will be taken to protect the safety and comfort of buyers, Davidson Gelbvieh/Lonesome Dove Ranch assume no responsibility in these matters and disclaims any liability, legal or otherwise, in the event of an accident or loss of property.

DAVIDSON GELBIEH
Box 681 Ponteix, SK S0N 1Z0

Ph. 306-625-7863
Ph. 306-625-7345



We would appreciate any address changes or corrections.

DAVIDSON GELBIEH & LONESOME DOVE BULL SALE | 1:00 P.M. CST | FRIDAY, MARCH 6, 2026

