

# VIII BULLFEST 26

VIII  
SIMMENTAL BULL SALE

SOUTH SEVEN FARMS  
RAFTER 4T FARMS  
JAYSHAW SIMMENTALS

SUNDAY, MARCH 1 2026  
CAMROSE AB 1PM





## SIMMENTAL BULL SALE

### Offering 67 YEARLING Bulls

Sunday, MARCH 1, 2026

1pm MST

CRE Main Building

Camrose Regional Exhibition Grounds

Camrose, AB

Please join us for lunch and hospitality at 12pm

#### SALE DAY PHONES:

**Rob Stuart: (780) 632-9358**

**Jason Bast: (780) 603-0676**

**Darrell Tatarin: (780) 632-9683**

**Denton Tatarin: (780) 603-3706**

#### Auctioneer:

**Dan Skeels: (403) 783-1217**

#### Ringmen:

**Garren Skeels: (403) 704-5784**

**Jim Pulyk: (780) 787-0646**

#### Bohrson Marketing Services:

**Darryl Snider: (780) 385-5561**

**Scott Anderson: (587) 282-9683**

#### Insurance:

**CFI Insurance**

**Heather Barr: (780) 853-7067**

**Semen Testing:** All bulls selling at the sale over the age of 12 months will be semen tested by a certified veterinarian.

**100% Guarantee:** All bulls are guaranteed to be satisfactory breeders in accordance with CSA guidelines. Should a problem occur barring physical injury or mismanagement, a bull of equal value will be provided or a credit will be issued towards the purchase of another bull. If you have any problems with your purchase, please contact the breeder immediately.

**Bull Development & Delivery:** The Bull Fest group will take yearling bulls back to the farm and keep bulls free of charge until April 1st. All buyers must insure the bulls if being returned to the consignor's farm.

**Option A:** Bulls can be picked up at Camrose on sale day and a \$100 discount will be deducted from the purchase price.

**Option B:** Bulls can return to the farm and will be delivered up to 200km at no charge at a convenient time for both the seller and buyer. Points beyond 200km will be at cost.

**Option C:** Bulls can return to the farm and be picked up at the buyer's convenience.



Catalogue can be viewed online at:

**www.bohrson.com**

*A special thank you to the below sponsors for their contribution to lunch and donuts.*



Internet Bidding Available



For more information call:  
Mark Shologan 780-699-5082 or Purebred Team 780-991-3025

Online Bidding & Viewing

available through:

**www.dlms.ca**

**EPD EXPLANATION** EPDs are "Expected Progeny Difference". They are a useful tool in selection. EPD incorporate the individual animal with its ancestry performance. EPDs do not compare across cattle breeds. They are individual based per breed. EPDs indicate a probable variance above or below breed average for that trait for a given bull's progeny. The accuracy of EPDs for calendar year bull calves is generally about 20% (one out of five times) so use it cautiously. One of several selection tools.

#### JAN SIMMENTAL EPD BREED AVERAGE

CE	BW	WW	YW	MILK	MCE	MWWT
7.2	3.4	79.2	115.2	26.2	4.0	65.7



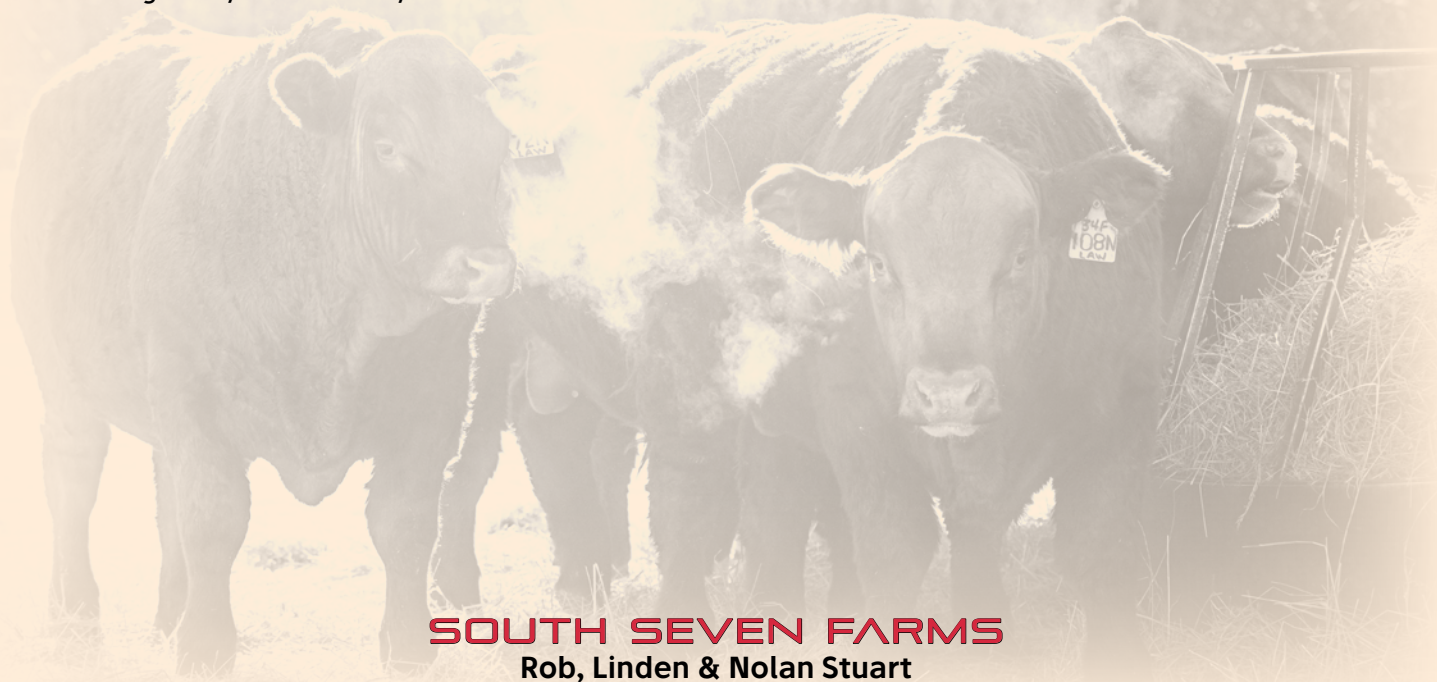
# Welcome to Bullfest 26.

Welcome to the 2026 edition of the annual Bullfest Simmental Sale. It is sure to be another exciting event and we are grateful for your continued support and loyalty in our programs. There has never been a more exciting time in the beef industry and there is no better time to invest in your next high quality bull to move your program in the desired direction.

This year's set of bulls is as strong and uniform as ever, and is arguably the strongest set on offer from the Southseven, Rafter 4T, and Jayshaw programs. The sale will offer you fullblood, red, black, and charlois performance as well as calving ease bulls. Every year we as a group strive to breed and produce cattle that are both functional and productive for the current market. Represented in the offering are a selection of walking and AI sires backed by quality females that has created a set of bulls that we are truly proud of.

Again, we are very grateful for support we have received from customers along the way. It is always exciting to meet and tour people through the bulls pens. One of the best parts of this business are the great conversations that are had and the people that are met along the way. Do not hesitate to contact any of the consignors for advice on selecting you next bull, or better yet stop by the farms for some fellowship and hospitality. If you cannot make the sale, we have a knowledgeable sales staff that you can be confident in handling your purchases.

The bulls will be available for viewing on Friday February 27 at the CRE in Camrose and we look forward to seeing everyone sale day.



## **SOUTH SEVEN FARMS**

Rob, Linden & Nolan Stuart

- PAGE 2-15 -

## **RAFTER 4T FARMS**

Darrell & Denton Tatarin and

Derek, Christy & Colt Tatarin

- PAGE 16-27 -

## **JAYSHAW SIMMENTALS**

Jason, Shawna, Ethan & Eboni Bast

- PAGE 28-32 -





## SOUTH SEVEN FARMS

Rob, Linden & Nolan Stuart  
Box 2118,  
Vegreville, AB.  
T9C 1T3

Cell: (780) 632-9358

Email: sseven@telusplanet.net

*Directions to Farm:*

*From Vegreville, 2 miles west,  
7 miles south on Holden Road #152, ¾ mile east on #512*

1

### SOUTHSEVEN RANCHMAN 2N

Full Fleckvieh 1526345 STU 2N Jan 2 2025

CE	BW	WW	YW	MILK	MCE	MWWT
3.5	5.7	77.0	104.2	34.7	0.3	73.2

BW: 102 ■ WW: 1060 ■ YW: 1410



FGAF FRENCH ATTACK 010C  
PINE CREEK BYLAW  
FGAF PRECIOUS THING 402T  
S: **FSMB KACHIMBO 1K**  
KOP GLADIATOR 106Y  
ELM TREE CHARMER 1C  
ELM TREE ZALIA 8Z

DOUBLE BAR D BUSTER 801L  
SOUTH SEVEN RAZZMATAZZ 7R  
SOUTH SEVEN FLECK 16F  
D: **SOUTHSEVEN MISS RAZZ 29H**  
ZAMUTO  
RICOCHET GLORY 75G  
DFM CRYSTAL 319C

#### Non Diluter

Some cows get it done every year and Miss Razz 29H is one of those. This year it's with Ranchman. Two years ago it was King Kong – the dark red, long spined herd sire we were fortunate enough to buy a share back in after the sale. Her second calf was a Viper heifer that ended up selling as a bred to Double Bar D. I think Ranchman will keep the tradition going.



2

**SOUTHSEVEN NEMO 3N**

Full Fleckvieh 1531933 STU 3N Jan 2 2025

CE	BW	WW	YW	MILK	MCE	MWWT
8.8	3.3	71.5	90.4	34.9	1.7	70.7

BW: 94 ■ WW: 905 ■ YW: 1330



FGAF FRENCH ATTACK 010C  
 PINE CREEK BYLAW  
 FGAF PRECIOUS THING 402T  
 S: **FSMB KACHIMBO 1K**  
 KOP GLADIATOR 106Y  
 ELM TREE CHARMER 1C  
 ELM TREE ZALIA 8Z  
 DOUBLE BAR D ADONIS 603N  
 BLCC MR ADONIS 30X  
 BLCC MISS HOUSTON 144U  
 D: **SOUTHSEVEN MISS ADONIS83B**  
 SOUTH SEVEN TOPNOTCH 29T  
 SOUTH SEVEN 29Y  
 SOUTH SEVEN MISS HAR 58P

**Non Diluter**

A Kachimbo son whose sire was bought out of a sale in Quebec and is one of the best footed bulls we've owned. This bull is backed by a twelve year old Adonis dam that gives you a pedigree that's tried and proven.

3

**SOUTHSEVEN NIGEL 20N**

Full Fleckvieh 1531936 STU 20N Jan 10 2025

CE	BW	WW	YW	MILK	MCE	MWWT
2.1	6.3	85.1	126.0	38.4	1.1	80.9

BW: 104 ■ ADJ WW: 850 ■ ADJ YW: 1631



DOUBLE BAR D EVEREST 103U  
 DOUBLE BAR D SPITFIRE 20X  
 VIRGINIA MS TREASURE 4T  
 S: **STARWEST TOTAL VALUE**  
 SOLWAY ADONIS  
 PHS POLLED WINFALL 27W  
 BAR 5 P FF BELLE 1402S  
 SIBELLE DIRTY HARRY 25Z  
 SOUTHSEVEN DENVER 34D  
 SOUTH SEVEN MISS 23X  
 D: **SOUTH SEVEN MISS APRIL 131G**  
 ANCHOR "T" METRO 4E  
 SOUTH SEVEN MISS 37Y  
 SOUTH SEVEN MISS NAV 103S

**Non Diluter**

We sourced some Total Value semen after seeing his genetics in a couple of herds and noticing a lot of their top animals went back to him. 20N is a power bull with natural muscling that I feel will leave some awesome females.

**SIRE****FSMB KACHIMBO 1K**

sire of lots 1, 2, 4, 12



4

SOUTHSEVEN NASHVILLE 53N

Full Fleckvieh 1533098 STU 53N Jan 21 2025

CE	BW	WW	YW	MILK	MCE	MWWT
5.3	4.9	78.3	107.9	32.7	2.3	71.9

BW: 102 ■ ADJ WW: 873 ■ ADJ YW: 1460



FGAF FRENCH ATTACK 010C  
PINE CREEK BYLAW  
FGAF PRECIOUS THING 402T  
S: **FSMB KACHIMBO 1K**  
KOP GLADIATOR 106Y  
ELM TREE CHARMER 1C  
ELM TREE ZALIA 8Z

STARWEST POL BLUEPRINT  
SOUTHSEVEN POLLED POWER 14F  
SOUTH SEVEN MISS 83X  
D: **SOUTHSEVEN MISS EVAN 8K**  
SOUTHSEVEN DENVER 34D  
SOUTH SEVEN MISS EVAN 106G  
SOUTHSEVEN MISS EVAN 45C

**Non Diluter**

Wow. A bull that stood out as a calf and all throughout the summer. His young dam raised a top end heifer with her first calf that Brock Jackson from Mannville somehow squeezed out of me. She ended up winning Supreme Champion at his local 4-H show. I think this bull will have a lot of friends on sale day just like his half-sister did.

5

SOUTHSEVEN NEUTRON 63N

Full Fleckvieh 1533110 STU 63N Jan 24 2025

CE	BW	WW	YW	MILK	MCE	MWWT
0.4	6.9	81.7	120.9	31.5	0.1	72.4

BW: 105 ■ ADJ WW: 798 ■ ADJ YW: 1500



DOUBLE BAR D EVEREST 103U  
DOUBLE BAR D SPITFIRE 20X  
VIRGINIA MS TREASURE 4T  
S: **STARWEST TOTAL VALUE**  
SOLWAY ADONIS  
PHS POLLED WINFALL 27W  
BAR 5 P FF BELLE 1402S  
STARWEST POL BLUEPRINT  
SOUTHSEVEN POLLED POWER 14F  
SOUTH SEVEN MISS 83X  
D: **SOUTHSEVEN MISS POL LADY 39K**  
SOUTHSEVEN AFFINITY 40A  
SOUTHSEVEN MISS AFFINITY 86D  
SOUTHSEVEN MISS MELODY85B

**Non Diluter**

Born unassisted, this dark red, double goggled bull will leave some tremendous females. A strong maternal pedigree.



6

**SOUTHSEVEN NEPTUNE 77N**

Full Fleckvieh 1533131 STU 77N Jan 30 2025

CE	BW	WW	YW	MILK	MCE	MWWT
5.2	5.8	76.2	103.1	39.1	2.2	77.2

**BW: 98 ■ ADJ WW: 766 ■ ADJ YW: 1363**

granddam 43A

FGAF BARBOSSA 707X  
 ANCHOR D MACS EGO 132B  
 ANCHOR D ANGELICA 132Z  
 S: **SOUTHSEVEN KINGKONG 14K**  
 SOUTH SEVEN RAZZMATAZZ 7R  
 SOUTHSEVEN MISS RAZZ 29H  
 RICOCHET GLORY 75G  
 SIBELLE DIRTY HARRY 25Z  
 SOUTHSEVEN DENVER 34D  
 SOUTH SEVEN MISS 23X  
 D: **SOUTHSEVEN MISS HALO 128H**  
 SOUTH SEVEN TOPNOTCH 29T  
 SOUTHSEVEN MISS TOP 43A  
 SOUTH SEVEN MISS MOSES 1N

**Non Diluter**

We were fortunate to be able to purchase a share of King Kong Back after he sold in the 2024 Bullfest sale. Just like Neptune, his calves are consistent in colour and confirmation.

7

**SOUTHSEVEN OUTLOOK 89N**

Full Fleckvieh 1533146 STU 89N Feb 7 2025

CE	BW	WW	YW	MILK	MCE	MWWT
-0.8	7.6	82.0	118.4	36.7	-2.1	77.7

**BW: 100 ■ ADJ WW: 881 ■ ADJ YW: 1631**

VIRGINIA RADISON 5Z  
 VIRGINIA PRECISION 16C  
 BROCK YODA  
 S: **ANCHOR D OUTLOOK**  
 FGAF BARBOSSA 707X  
 ANCHOR D KAEI 255C  
 ANCHOR D RUBY RED 198A  
 BAR 5 SA HARRACH 801P  
 SOUTHSEVEN DENZIL 31D  
 SOUTH SEVEN MISS 36X  
 D: **SOUTHSEVEN MISS LA-RUSH 93L**  
 KLONDIKE GOLD RUSH 418B  
 SOUTHSEVEN MISS RUSH 37H  
 SOUTH SEVEN MISS TOP 47Z

**Non Diluter**

A high performance bull from a first calver with the likes of Harrach, Gold Rush, and Whistler. Denzil added a little more frame and produces perfect uddered females. Combined with the calving ease bull Outlook, this is a perfect combination.

8

**SOUTHSEVEN NORTHERN 105N**

Full Fleckvieh 1533326 STU 105N Feb 19 2025

CE	BW	WW	YW	MILK	MCE	MWWT
1.2	7.5	82.4	117.8	37.2	3.1	78.4

**BW: 90 ■ ADJ WW: 786 ■ ADJ YW: 1399**

FGAF BARBOSSA 707X  
 ANCHOR D MACS EGO 132B  
 ANCHOR D ANGELICA 132Z  
 S: **SOUTHSEVEN KINGKONG 14K**  
 SOUTH SEVEN RAZZMATAZZ 7R  
 SOUTHSEVEN MISS RAZZ 29H  
 RICOCHET GLORY 75G  
 ANTONIUS  
 GIDSCO APOLLO 3F  
 MFL BRENDA 65B  
 D: **SOUTH SEVEN MISS APOLLO**  
 DOUBLE BAR D BUSTER 801L  
 SOUTH SEVEN MISS 7S  
 SOUTH SEVEN MISS MOSES 1N

**Non Diluter**

The dam of this bull finally went to town this fall at 12 years of age. This bull displays the dark red colour and a little more frame that this cow passes on to her offspring.



9

SOUTHSEVEN NEWMAN 111N

Full Fleckvieh 1533343 STU 111N Feb 19 2025

CE	BW	WW	YW	MILK	MCE	MWWT
7.2	5.0	70.1	92.1	39.2	4.5	74.3

BW: 100 ■ ADJ WW: 797 ■ ADJ YW: 1394



FGAF BARBOSSA 707X  
ANCHOR D MACS EGO 132B  
ANCHOR D ANGELICA 132Z  
S: **SOUTHSEVEN KINGKONG 14K**  
SOUTH SEVEN RAZZMATAZZ 7R  
SOUTHSEVEN MISS RAZZ 29H  
RICOCHET GLORY 75G  
DOUBLE BAR D ADONIS 603N  
BLCC MR ADONIS 30X  
BLCC MISS HOUSTON 144U  
D: **SOUTHSEVEN MISS ADONIS85C**  
MCC NOLAN 50K  
MCC JOHANNA 247M  
MRLN JOHANNA

**Non Diluter**

A bull that goes back to one of our proven Adonis cows. Great disposition on the King Kong bulls. They move out freely and have an excellent foot just like their sire.

10

SOUTHSEVEN NORTHSTAR 117N

Scurred Full Fleckvieh S1533364 STU 117N Feb 22 2025

CE	BW	WW	YW	MILK	MCE	MWWT
6.3	5.3	73.8	101.1	40.2	4.1	77.1

BW: 100 ■ ADJ WW: 848 ■ ADJ YW: 1690



FGAF BARBOSSA 707X  
ANCHOR D MACS EGO 132B  
ANCHOR D ANGELICA 132Z  
S: **SOUTHSEVEN KINGKONG 14K**  
SOUTH SEVEN RAZZMATAZZ 7R  
SOUTHSEVEN MISS RAZZ 29H  
RICOCHET GLORY 75G  
SIBELLE DIRTY HARRY 25Z  
SOUTHSEVEN DENVER 34D  
SOUTH SEVEN MISS 23X  
D: **SOUTH SEVEN MISS POLLED 107G**  
ANCHOR D VIPER 103W  
SOUTH SEVEN MISS VIPER24Z  
SOUTH SEVEN MISS 12X

**Non Diluter**

This is the highest gaining bull since weaning in the pen. He was raised by one of the most proven fullblood cow families on the farm. His granddam STU 24Z sent Southseven Perfection to Jensen Simmentals in Kansas. Northern's dam also raised Legacy that we retained in our herd. Last year, her Jahari heifer was the pick of the heifer calves from the World sale consignment.

11

SOUTHSEVEN NORTHSIDE 128N

Full Fleckvieh 1534161 STU 128N Mar 01 2025

CE	BW	WW	YW	MILK	MCE	MWWT
4.6	6.5	76.6	105.5	36.3	3.3	74.6

BW: 75 ■ ADJ WW: 819 ■ ADJ YW: 1475



FGAF BARBOSSA 707X  
ANCHOR D MACS EGO 132B  
ANCHOR D ANGELICA 132Z  
S: **SOUTHSEVEN KINGKONG 14K**  
SOUTH SEVEN RAZZMATAZZ 7R  
SOUTHSEVEN MISS RAZZ 29H  
RICOCHET GLORY 75G  
STARWEST POL BLUEPRINT  
SOUTHSEVEN POLLED POWER 14F  
SOUTH SEVEN MISS 83X  
D: **SOUTHSEVEN MISS POWER 21K**  
SOUTHSEVEN DENVER 34D  
SOUTH SEVEN MISS DENVER 92G  
SOUTH SEVEN MISS 41X

**Non Diluter**

We know this is a twin and later born, but his young dam is one of the best young cows in the herd. She's deep bodied, beautiful uddered and dark red. Combine this with King Kong and I think this bull could be a real sleeper sale day.



BW: 87 ■ WW: 1190 ■ YW: 1590



dam of lot 12

FGAF FRENCH ATTACK 010C  
 PINE CREEK BYLAW  
 FGAF PRECIOUS THING 402T  
 S: **FSMB KACHIMBO 1K**  
 KOP GLADIATOR 106Y  
 ELM TREE CHARMER 1C  
 ELM TREE ZALIA 8Z

ANCHOR D IMAX 250Y  
 SOUTHSEVEN AFFINITY 40A  
 SOUTH SEVEN MISS 8Y  
 D: **SOUTHSEVEN MISS ENGELA 98E**  
 BAR 5 SA EVAN 440L  
 SOUTHSEVEN MISS EVAN 45C  
 SOUTHSEVEN MISS ADONIS51Z

**Non Diluter**

If you want them dark red in colour and coloured down to the hoof, Memphis might catch your attention. This off age, big guy has a great disposition like his sire.

**SIRE****SOUTHSEVEN KINGKONG 14K**

sire of lots 6, 8, 9, 10, 11



13

SOUTHSEVEN NEVADA 10N

Homo Polled PB PG1531934 STU 10N Jan 3 2025

CE	BW	WW	YW	MILK	MCE	MWWT
13.4	0.2	76.5	113.8	28.2	7.9	66.5

BW: 82 ■ ADJ WW: 762 ■ ADJ YW: 1375



HOOKS SHEAR FORCE 38K  
WHL RED HEAT 1734E  
CMS SODA POP 422B  
S: **CIRCLE G HEAT 126H**  
CIRCLE G CASH 1C  
CIRCLE G RED ZEOLA 8124F  
CIRCLE G BLK ZEOLA 468B  
REMINGTON LOCK N LOAD 54U  
W/C LOADED UP 1119Y  
AUBREYS BLACK BLAZE III  
D: **SOUTHSEVEN MISS FREEDOM 31J**  
LBR CROCKET R81  
SOUTH SEVEN MISS CROCKET 24G  
SOUTH HOLDEN MIS FREE 52U

**Homo Polled**

A bull sired by our calving ease sire Circle G Heat. Moderate framed and as dark red as you can find them.

14

SOUTHSEVEN NAVIGATOR 13N

Polled PB PG1531935 STU 13N Jan 6 2025

CE	BW	WW	YW	MILK	MCE	MWWT
3.3	5.6	85.7	127.1	30.9	1.9	73.8

BW: 102 ■ ADJ WW: 881 ■ ADJ YW: 1659



SVS BROOKS 669D  
SVS TYCOON 841F  
SVS RED ANNIE 411B  
S: **SUNNY VALLEY MAGNATE 35K**  
KWA FLYF RED MOUNTAIN 16Z  
SUNNY VALLEY CARRIE 15E  
SUNNY VALLEY CARRIE 72C

WHEATLAND HIGHVOLTAGE122Y  
WHEATLAND BULL 351A  
WHEATLAND LADY 713T  
D: **SOUTH SEVEN MISS WHEATY 93D**  
SHAWACRES JAHARI 50L  
MFI MISS ROBIN GER 7072  
ANCHOR "T" LANA 57H

**Non Diluter**

I'd say one of the best red bulls I've raised from every angle. Thick butted, deep bodied, and had the frame to carry his 1600 lbs on January 1. A bull that will add some punch to your calves.



15

## SOUTHSEVEN NEON 26N

Homo Polled PB PG1531938 STU 26N Jan 13 2025

CE	BW	WW	YW	MILK	MCE	MWWT
8.0	2.9	89.9	133.7	27.8	5.7	72.8

BW: 99 ■ ADJ WW: 767 ■ ADJ YW: 1445



HOOKS SHEAR FORCE 38K  
 WHL RED HEAT 1734E  
 CMS SODA POP 422B  
 S: **CIRCLE G HEAT 126H**  
 CIRCLE G CASH 1C  
 CIRCLE G RED ZEOLA 8124F  
 CIRCLE G BLK ZEOLA 468B  
 WFL WESTCOTT 24C  
 SOUTHSEVEN ESCALADE 26E  
 RAINALTA FREDAS CASINO 95A  
 D: **SOUTHSEVEN MISS RED 94J**  
 3D RED POWER 150Z  
 SOUTHSEVEN MISS RED 18B  
 SOUTH HOLDEN MIS FREE 52U

**Homo Polled | Non Diluter**

Another Heat son that is dark red with tons of hair. His dam is a bigger framed cow. Check out his EPD's.

16

## SOUTHSEVEN NESTOR 27N

Scurred PB SG1531939 STU 27N Jan 13 2025

CE	BW	WW	YW	MILK	MCE	MWWT
2.5	5.8	80.1	116.7	29.9	0.8	69.9

BW: 102 ■ ADJ WW: 871 ■ ADJ YW: 1511



SVS BROOKS 669D  
 SVS TYCOON 841F  
 SVS RED ANNIE 411B  
 S: **SUNNY VALLEY MAGNATE 35K**  
 KWA FLYF RED MOUNTAIN 16Z  
 SUNNY VALLEY CARRIE 15E  
 SUNNY VALLEY CARRIE 72C  
 BEL WESTERN UNION 2ND  
 SOUTHSEVEN ENCLAVE 32E  
 SOUTH SEVEN MISS 23X  
 D: **SOUTH SEVEN MISS BRIANA 54G**  
 SHAWACRES JAHARI 50L  
 SOUTH SEVEN MS JAHARI 19C  
 M-RIDGE BRIANA 064B

**Non Diluter**

Probably one of the easiest fleshing bulls in the pen and has exhibited this since birth. If you're looking to add a little more stretch in your calves, this guy might do the job.

**SIRE****SUNNY VALLEY MAGNATE 35K**

sire of lots 14, 16, 17, 18, 24, 26, 27, 28, 29, 30



17

SOUTHSEVEN NAVAJO 34N

Homo Polled PB PG1531940 STU 34N Jan 15 2025

CE	BW	WW	YW	MILK	MCE	MWWT
6.6	3.5	75.4	107.7	28.4	3.5	66.1

BW: 100 ■ ADJ WW: 780 ■ ADJ YW: 1446



SVS BROOKS 669D  
SVS TYCOON 841F  
SVS RED ANNIE 411B  
S: **SUNNY VALLEY MAGNATE 35K**  
KWA FLYF RED MOUNTAIN 16Z  
SUNNY VALLEY CARRIE 15E  
SUNNY VALLEY CARRIE 72C

R PLUS 20X  
BLI RED ADDICTION 224Z  
LFE RS MISS ARNOLD 609U  
D: **SOUTHSEVEN MISS RED 94B**  
BLCC MR ADONIS 30X  
SOUTHSEVEN MISSADONIS113Z  
SOUTH SEVEN MISS 47W

**Homo Polled | Non Diluter**

A Magnate son our of one of our older, proven cows. Longevity in the pedigree, balanced EDP's, and overall eye appeal.

18

SOUTHSEVEN NIGHTRIDER 59N

Homo Polled PB PG1533105 STU 59N Jan 22 2025

CE	BW	WW	YW	MILK	MCE	MWWT
8.1	3.5	85.4	128.7	25.0	6.3	67.7

BW: 91 ■ ADJ WW: 843 ■ ADJ YW: 1651



SVS BROOKS 669D  
SVS TYCOON 841F  
SVS RED ANNIE 411B  
S: **SUNNY VALLEY MAGNATE 35K**  
KWA FLYF RED MOUNTAIN 16Z  
SUNNY VALLEY CARRIE 15E  
SUNNY VALLEY CARRIE 72C  
WFL WESTCOTT 24C  
SOUTHSEVEN ESCALADE 26E  
RAINALTA FRED A CASINO 95A  
D: **SOUTH SEVEN MISS ESCALADE 75G**  
LFE RED CASINO 3036X  
SOUTHSEVEN MISS RED 48B  
SOUTH SEVEN MISS TOP 20Z

**Homo Polled | Non Diluter**

A bull that has above average EPD's in almost every category. We just calved out his full sister and both have great dispositions.



19

## SOUTHSEVEN NEEMO 51N

Homo Polled PB PG1531942 STU 51N Jan 20 2025

CE	BW	WW	YW	MILK	MCE	MWWT
15.4	-0.2	70.0	86.1	23.7	4.5	58.7

BW: 80 ▪ ADJ WW: 742 ▪ ADJ YW: 1363



TNT BOOTLEGGER Z268  
MAR MAC UTAH WHISKY 52E  
MAR MAC UTAH'S DREAM 79U  
S: **WLB TOP TIER 456G**  
SUNNY VALLEY FORCE 47Y  
WLB 47Y FAE 343E  
WLB 756T TRESSIE 3556B

WHEATLAND RIVAL 8125F  
WHEATLAND NEXT CENTURY 43H  
WHEATLAND LADY 123Y  
D: **SOUTHSEVEN MISS CENTURY 33L**  
MCINTOSH SONNY 44C  
SOUTHSEVEN MISS HEIDI 34H  
SOUTHSEVEN MISS RED 84B

**Homo Polled | Non Diluter**

A blazed-faced, Top Tier heifer bull prospect. We are currently still using Top Tier on a number of our heifers.

20

## SOUTHSEVEN NASH 72N

Polled PB PG1533124 STU 72N Jan 27 2025

CE	BW	WW	YW	MILK	MCE	MWWT
8.3	2.8	77.8	129.1	23.7	5.4	62.6

BW: 99 ▪ ADJ WW: 775 ▪ ADJ YW: 1396



CDI AUTHORITY 77X  
KWA LAW MAKER 59C  
KWA MS ROCK 14X  
S: **BLACK GOLD LAWMAKER 141G**  
SVS CAPTAIN MORGAN 11Z  
RF CERTAINLY FLIRTIN 532C  
RF CERTAINLY FLIRTIN 202Z  
KWA FLYF RED MOUNTAIN 16Z  
CIRCLE G CASH 1C  
SWAN LAKE NO SECRET 76A  
D: **SOUTHSEVEN MISS CASH 15J**  
SOUTHSEVEN ESCALADE 26E  
SOUTH SEVEN MISS RED 14G  
SOUTHSEVEN MISS BODY 73A

**Non Diluter**

This bull is so dark red he even has a bit of black on parts of his body. With a moderate frame like a lot of the Lawmaker bulls he comes from a very productive cow family.



21

SOUTHSEVEN NIXON 76N

Homo Polled PB PG1533130 STU 76N Jan 29 2025

CE	BW	WW	YW	MILK	MCE	MWWT
5.8	3.6	70.4	114.5	16.9	0.6	52.1

BW: 96 ■ ADJ WW: 744 ■ ADJ YW: 1346



CDI AUTHORITY 77X  
KWA LAW MAKER 59C  
KWA MS ROCK 14X  
S: **BLACK GOLD LAWMAKER 141G**  
SVS CAPTAIN MORGAN 11Z  
RF CERTAINLY FLIRTIN 532C  
RF CERTAINLY FLIRTIN 202Z  
SAJ RED EQUALIZER 7U  
MCINTOSH SONNY 44C  
MISS R PLUS 8297U  
D: **SOUTHSEVEN MISS RED 45H**  
WHEATLAND BULL 351A  
SOUTHSEVEN MISS WHEATY 92E  
BLCC MISS RENEGADE 227Z

**Homo Polled | Non Diluter**  
A smooth fronted, moderate framed Lawmaker son. We have a number of his sisters in production and they make beautiful uddered, easy keeping females.

22

SOUTHSEVEN / RFT NOBLEMAN 83N

Homo Polled PB PG1539158 STU 83N Feb 3 2025

CE	BW	WW	YW	MILK	MCE	MWWT
5.0	4.2	82.7	135.5	20.3	4.1	61.6

BW: 87 ■ ADJ WW: 740 ■ ADJ YW: 1426



CDI AUTHORITY 77X  
KWA LAW MAKER 59C  
KWA MS ROCK 14X  
S: **BLACK GOLD LAWMAKER 141G**  
SVS CAPTAIN MORGAN 11Z  
RF CERTAINLY FLIRTIN 532C  
RF CERTAINLY FLIRTIN 202Z

CDI AUTHORITY 77X  
KWA ROOSEVELT 63F  
KWA MS ROCK 138Z  
D: **SVS RED SAGE 51J**  
R PLUS RELOAD 2006Z  
WFL RED SAGE 506C  
WFL RED SAGE 1003Y

**Homo Polled | Non Diluter**  
A moderate framed, dark red bull with a beautiful hair coat. A typical Lawmaker son. His dam was purchased at Friday Night Lights sale from the popular Sage cow family.



**23****SOUTHSEVEN TOP TIER 92N**

Homo Polled PB PG1533151 STU 92N Feb 09 2025

CE	BW	WW	YW	MILK	MCE	MWWT
12.0	1.6	74.2	104.4	24.9	4.7	62.0

**BW: 87 ■ ADJ WW: 844 ■ ADJ YW: 1446**

TNT BOOTLEGGER Z268  
MAR MAC UTAH WHISKY 52E  
MAR MAC UTAH'S DREAM 79U  
S: **WLB TOP TIER 456G**  
SUNNY VALLEY FORCE 47Y  
WLB 47Y FAE 343E  
WLB 756T TRESSIE 3556B  
KWA LAW MAKER 59C  
BLACK GOLD LAWMAKER 141G  
RF CERTAINLY FLIRTIN 532C  
D: **SOUTHSEVEN MISS RED 50L**  
WS HIGH STAKES W115  
SOUTHSEVEN MISS RED 17E  
SOUTHSEVEN MISS RED 73C

**Homo Polled | Diluter Free**

As our go to red purebred calving ease bull, Top Tier never seems to disappoint. This bull is blaze faced with a low birth weight and solid confirmation.

**24****SOUTHSEVEN NALDO 98N**

Homo Polled PB PG1533269 STU 98N Feb 14 2025

CE	BW	WW	YW	MILK	MCE	MWWT
4.4	4.9	86.2	136.0	26.1	4.1	69.2

**BW: 98 ■ ADJ WW: 803 ■ ADJ YW: 1619**

SVS BROOKS 669D  
SVS TYCOON 841F  
SVS RED ANNIE 411B  
S: **SUNNY VALLEY MAGNATE 35K**  
KWA FLYF RED MOUNTAIN 16Z  
SUNNY VALLEY CARRIE 15E  
SUNNY VALLEY CARRIE 72C  
KWA LAW MAKER 59C  
BLACK GOLD LAWMAKER 141G  
RF CERTAINLY FLIRTIN 532C  
D: **SOUTHSEVEN MISS LAWMAKER 32K**  
WHEATLAND BULL 351A  
SOUTH SEVEN MISS RED 42C  
SOUTH SEVEN MISS 26U

**Homo Polled | Diluter Free**

This bull is the result of the two herdbulls in our red program. Magnate adds a little more frame to the moderate Lawmaker females. Naldo will give you the best of both pedigrees.

**25****SOUTHSEVEN RED BLAZE 107N**

Homo Polled PB PG1533331 STU 107N Feb 19 2025

CE	BW	WW	YW	MILK	MCE	MWWT
8.4	2.9	81.8	132.9	23.8	5.3	64.7

**BW: 88 ■ ADJ WW: 803 ■ ADJ YW: 1432**

CDI AUTHORITY 77X  
KWA LAW MAKER 59C  
KWA MS ROCK 14X  
SIRE: **BLACK GOLD LAWMAKER 141G**  
SVS CAPTAIN MORGAN 11Z  
RF CERTAINLY FLIRTIN 532C  
RF CERTAINLY FLIRTIN 202Z  
SVS BROOKS 669D  
SVS TYCOON 841F  
SVS RED ANNIE 411B  
D: **SOUTHSEVEN MISS TYCOON 19K**  
WS HIGH STAKES W115  
SOUTHSEVEN MISS RED 17E  
SOUTHSEVEN MISS RED 73C

**Homo Polled | Non Diluter**

A Lawmaker son from one of my best young red purebred cows. This Tycoon cow raised one of the high selling red bulls in last year's sale with her first calf. This mid February blaze faced bull is smooth fronted and should provide some calving ease.



26

SOUTHSEVEN NEDVED 108N

Homo Polled PB PG1533333 STU 108N Feb 19 2025

CE	BW	WW	YW	MILK	MCE	MWWT
4.4	5.0	85.1	128.0	24.6	3.4	67.2

BW: 99 ■ ADJ WW: 763 ■ ADJ YW: 1424



SVS BROOKS 669D  
SVS TYCOON 841F  
SVS RED ANNIE 411B  
S: **SUNNY VALLEY MAGNATE 35K**  
KWA FLYF RED MOUNTAIN 16Z  
SUNNY VALLEY CARRIE 15E  
SUNNY VALLEY CARRIE 72C  
TNT 90 PROOF Z401  
WFL WESTCOTT 24C  
WFL SWEET LICIOUS 1044X  
D: **SOUTHSEVEN MISS WESTCOTT 34F**  
THSR BOMBARDIER U802  
SOUTH SEVEN MISS RED 5Z  
SOUTH SEVEN MELODY 69M

**Homo Polled | Non Diluter**

A typical Magnate son. Dark red, long bodied, and raised by a bigger framed Westcott cow.

27

SOUTHSEVEN NUMITOR 114N

Polled PB PG1533356 STU 114N Feb 20 2025

CE	BW	WW	YW	MILK	MCE	MWWT
3.9	6.0	88.5	130.4	30.9	4.0	75.1

BW: 102 ■ ADJ WW: 846 ■ ADJ YW: 1630



SVS BROOKS 669D  
SVS TYCOON 841F  
SVS RED ANNIE 411B  
S: **SUNNY VALLEY MAGNATE 35K**  
KWA FLYF RED MOUNTAIN 16Z  
SUNNY VALLEY CARRIE 15E  
SUNNY VALLEY CARRIE 72C

DOUBLE BAR D ADONIS 603N  
BLCC MR ADONIS 30X  
BLCC MISS HOUSTON 144U  
D: **SOUTHSEVEN MISS WILLOW 58E**  
LWC JAHARI 24P  
LWC MISS JAHARI 24P 55W  
JB LONESOME DOVE 74L

**Non Diluter**

A later born Magnate son that has kept up to his older siblings. We love the hair on this blazed faced bull. We sold a full brother to Cannan farms, and he was a carbon copy to Numitor.



**28****SOUTHSEVEN NATHANIEL 113N**

Homo Polled PB PG1533354 STU 113N Feb 20 2025

CE	BW	WW	YW	MILK	MCE	MWWT
4.0	5.0	86.9	135.2	23.1	1.6	66.6

**BW: 98 ■ ADJ WW: 795 ■ ADJ YW: 1529**

SVS BROOKS 669D  
SVS TYCOON 841F  
SVS RED ANNIE 411B  
S: **SUNNY VALLEY MAGNATE 35K**  
KWA FLYF RED MOUNTAIN 16Z  
SUNNY VALLEY CARRIE 15E  
SUNNY VALLEY CARRIE 72C  
KWA LAW MAKER 59C  
BLACK GOLD LAWMAKER 141G  
RF CERTAINLY FLIRTIN 532C  
D: **SOUTHSEVEN MISS LAWMAKER 34K**  
WFL WESTCOTT 24C  
SOUTHSEVEN MISS WESTCOTT 65E  
SOUTHSEVEN MISS RED 70B

**Homo Polled | Non Diluter**

We were fortunate to find Magnate to compliment our Lawmaker females. This bull combines the strengths of both sires.

**29****SOUTHSEVEN NICKY 121N**

Polled PB PG1533368 STU 121N Feb 25 2025

CE	BW	WW	YW	MILK	MCE	MWWT
3.9	5.0	80.7	119.8	26.9	3.6	67.3

**BW: 98 ■ ADJ WW: 824 ■ ADJ YW: 1474**

SVS BROOKS 669D  
SVS TYCOON 841F  
SVS RED ANNIE 411B  
S: **SUNNY VALLEY MAGNATE 35K**  
KWA FLYF RED MOUNTAIN 16Z  
SUNNY VALLEY CARRIE 15E  
SUNNY VALLEY CARRIE 72C  
LFE BLACK LAKOTA 385W  
NUG ROYAL RED 324A  
TRIPLE C SMARTY PANTS R  
D: **SOUTH SEVEN MISS ROYAL 26D**  
LCHMN BODYBUILDER 7303F  
SOUTH SEVEN MISS BODY 13T  
SOUTH SEVEN LILLI 50L

**Non Diluter**

At just a year of age, this bull will be one of the younger ones on sale day.

**30****SOUTHSEVEN NOVAMAN 126N**

Polled PB PG1534212 STU 126N Feb 28 2025

CE	BW	WW	YW	MILK	MCE	MWWT
6.3	4.5	77.4	114.4	32.3	5.0	71.0

**BW: 96 ■ ADJ WW: 902 ■ ADJ YW: 1592**

SVS BROOKS 669D  
SVS TYCOON 841F  
SVS RED ANNIE 411B  
S: **SUNNY VALLEY MAGNATE 35K**  
KWA FLYF RED MOUNTAIN 16Z  
SUNNY VALLEY CARRIE 15E  
SUNNY VALLEY CARRIE 72C  
SIBELLE DIRTY HARRY 25Z  
SOUTHSEVEN DENVER 34D  
SOUTH SEVEN MISS 23X  
D: **SOUTHSEVEN MISS FLECK 112H**  
ANCHOR D VIPER 103W  
SOUTH SEVEN MISS VIPER67Z  
SOUTH SEVEN FLECK 16F

**Non Diluter**

We bred Magnate to a few fullbloods and you can see the growth with this bull weaning over 900lbs with almost a March birth date. If you're looking to add a few more pounds at weaning time, this is the bull to do it.





## RAFTER 4T FARMS

Darrell and Denton Tatarin  
Derek, Christy and Colt Tatarin  
Box 122, Hairy Hill, Alberta T0B 1S0

Darrell's Cell: (780) 632-9683  
Denton's Cell: (780) 603-3706  
Derek's Cell: (780) 603-0339

31

### RAFTER 4T OPTIMUS 13N

Horned FF 1536455 RAFT 13N Jan 15 2025

CE	BW	WW	YW	MILK	MCE	MWWT
1.9	6.8	90.1	123.8	32.3	2.2	77.4

BW: 104ET ■ ADJ WW: 808 ■ ADJ YW: 1482



dam: IPU 402T Precious Thing 133J



sire: JNR Barbarian

JNR BOULDER  
JNR BALDWIN  
JNR TAJSA 475B  
S: **JNR BARBARIAN**  
BAR KR REAL TIME 14Z  
RUK MS CAPRI 1C  
RUK MS ADRA 49A

ROGANT  
PRL HOUSTON 005H  
MS PRL NITE-ANCHOR 109B  
D: **IPU 402T PRECIOUS THING 133J**  
R-FIVE MALTESE  
FGAF PRECIOUS THING 402T  
FGAF SHANTI 121P

#### Non Diluter

13N has been a standout since birth and is one we were excited about since he hit the ground. An embryo calf out of the 165k valued Barbarian and the beautiful Precious Thing donor who is dark red, hairy, attractive from every angle, heavy muscled, big bodied, and is one we overall are really impressed with. Barbarian semen is very limited on the market and progeny are not in abundance. What is real impressive are his two full sisters in our replacement pen who would be the top two heifers in our opinion. 13N is one we are confident that will sire high performance progeny and will leave you with a pen of replacement females that you sure will be proud of. He will be hard to miss on sale day.



32

## RAFTER 4T JACKSON 81N

Polled FF P1536457 RAFT 81N Jan 17 2025

CE	BW	WW	YW	MILK	MCE	MWWT
4.6	4.8	71.8	100.4	33.5	3.6	69.4

BW: 102 ■ ADJ WW: 746 ■ ADJ YW: 1420



## Non Diluter

A real nice polled fullblood out of the great Silver Lake Jackson bull that has been used to great success by many breeders across Canada. Jackson progeny have been some of the most sought after progeny in Canada. The Jackson bull implements performance, color, hair, and soundness into his calves. 81N is raised by another strong young female and will be strong asset for his new owners.

SIBELLE SPARTACUS 8A  
SIBELLE POL DARWIN 21F  
SIBELLE POL MOLLY 7B  
S: **SILVER LAKE JACKSON 24J**  
ANCHOR D HIGH NOON 247B  
MCM MISS FARRAH FF 10F  
BAR 5 BERTA DA ZURITA

STARWEST BRYCK  
BLACK GOLD BRYK 109E  
BLACK GOLD HOTCHELLRAE58B  
D: **RAFTER 4T BECKY 81H**  
IPU BRONSON 19K  
RAFTER 4T BECKY 81B  
SOUTH SEVEN MISS 81Y



sire: Silverlake Jackson

33

## RAFTER 4T MOTOWN 16N

Horned FF 1536445 RAFT 16N Jan 03 2025

CE	BW	WW	YW	MILK	MCE	MWWT
5.7	4.3	74.7	107.0	30.9	1.2	68.3

BW: 97 ■ ADJ WW: 880 ■ ADJ YW: 1403



## Non Diluter

Here is a real power and performance type bull. Big bodied, large hiped with plenty of mass and dimension. He stands on a real strong foot and being out of the Anchor D Motown bull, 16N could be an asset to any operation. Motown has sired high selling bulls and females across the country and is one of the high quality fullblood herd sires out there. Just by looking at his impressive weaning weight numbers it is easy to predict the mass and frame 16N will pass onto his calves. This is one you will want to take a look at.

SIBELLE DIRTY HARRY 25Z  
FGAF FRENCH ATTACK 010C  
VIRGINIAS JANE WEST  
S: **ANCHOR D MOTOWN 865E**  
R-FIVE MALTESE  
FGAF PRECIOUS THING 402T  
FGAF SHANTI 121P

DOUBLE BAR D HEMI 183T  
RAFTER 4T NO LIMIT 28A  
4L MS GURERRO 28U  
D: **RAFTER 4T YORI 16G**  
SS MOLSON'S SPECIAL BLEND  
RAFTER 4T YORI 16Y  
GIST NATIVE'S PRIDE 16P



sire: Anchor D Motown



34

## RAFTER 4T OUTLOOK 20N

Polled FF P1536471 RAFT 20N Feb 15 2025

CE	BW	WW	YW	MILK	MCE	MWWT
7.6	3.9	74.5	107.7	35.9	4.2	73.2

BW: 87 ■ ADJ WW: 823 ■ ADJ YW: 1505



## Non Diluter

20N is the first of our outlook calves out of one of the most productive fullblood cow lineages on the farm. If you look back into our fullblood herd, quite a few females and bulls that we have kept and sold stem back to our "402" line. This is a calf that is solid colored, cool marked, and comes from a cow family that is amongst our strongest.

VIRGINIA PRECISION 16C  
ANCHOR D OUTLOOK  
ANCHOR D KAEI 255C  
S: **LRX OUTLOOK 14K**  
CROSSROAD RADIUM 789U  
WJS HEAVEN 9H  
WJS MS EGO 828F

STARWEST BRYCK  
BLACK GOLD BRYK 109E  
BLACK GOLD HOTCHELLRAE58B  
D: **RAFTER 4T BECCA 402L**  
RAFTER 4T INFERNO 76Y  
RAFTER 4T BECCA 402B  
RAFTER 4T PANSY 402U



sire: LRX Outlook 14K

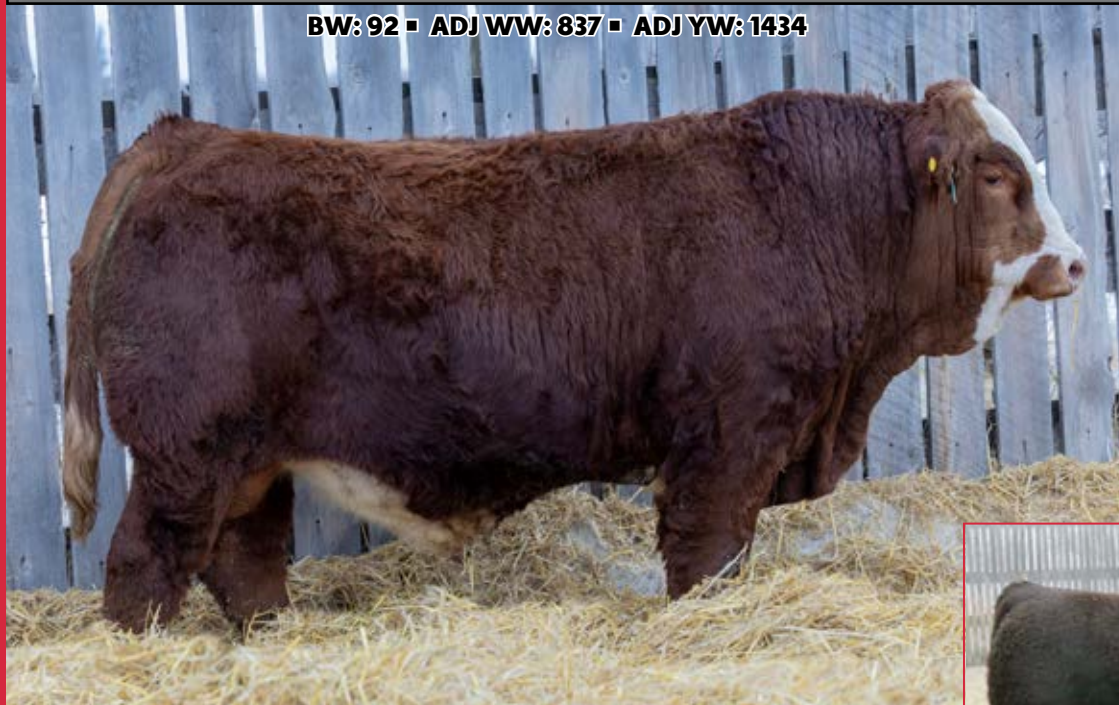
35

## RAFTER 4T OUTLOOK 24N

Homo Polled FF P1497989 RAFT 68M Feb 4 2024

CE	BW	WW	YW	MILK	MCE	MWWT
8.2	3.7	74.8	108.3	36.8	3.9	74.2

BW: 92 ■ ADJ WW: 837 ■ ADJ YW: 1434



## Non Diluter

The second of four Outlook sons we have on offer. 24N patterns similar to his half brothers. A lower birthweight calf who is very sound, long spined, in a complete and well muscled package. 24N is one of the darker colored fullbloods in the pen who was raised by a real attractive and beautifully uddered young female who has a bright future ahead of her. Being Homo Polled is something else worth noting.

VIRGINIA PRECISION 16C  
ANCHOR D OUTLOOK  
ANCHOR D KAEI 255C  
S: **LRX OUTLOOK 14K**  
CROSSROAD RADIUM 789U  
WJS HEAVEN 9H  
WJS MS EGO 828F

STARWEST BRYCK  
BLACK GOLD BRYK 109E  
BLACK GOLD HOTCHELLRAE58B  
D: **RAFTER 4T PANZY 24J**  
DOUBLE BAR D HEMI 183T  
RAFTER 4T PANZY 402Z  
RAFTER 4T PANSY 402T



sire: LRX Outlook 14K



36

## RAFTER 4T OUTLOOK 01N

Polled FF P1536461 RAFT 01N Jan 26 2025

CE	BW	WW	YW	MILK	MCE	MWWT
7.6	3.8	73.0	104.7	35.8	3.3	16.9

BW: 93 ■ ADJ WW: 763 ■ ADJ YW: 1333



VIRGINIA PRECISION 16C  
ANCHOR D OUTLOOK  
ANCHOR D KAE 255C  
S: **LRX OUTLOOK 14K**  
CROSSROAD RADIUM 789U  
WJS HEAVEN 9H  
WJS MS EGO 828F  
STARWEST BRYCK  
BLACK GOLD BRYK 109E  
BLACK GOLD HOTCHELLRAE58B  
D: **RAFTER 4T YORI 016K**  
SS MOLSON'S SPECIAL BLEND  
RAFTER 4T YORI 16Y  
GIST NATIVE'S PRIDE 16P

**Non Diluter**

01N is a dark, hairy, complete made calf out of our LRX Outlook herdsire. We are real happy with our Outlook calves; they come easy with moderate birthweights and grow like weeds. An Outlook daughter was a feature heifer calf at the Border City Simmental Sale this past December and more than a handful are at the top of the replacement pen. 01N will inject hair, growth, and strong maternal traits into his offspring.

37

## RAFTER 4T OUTLOOK 6N

Homo Polled FF P1536473 RAFT 6N Feb 24 2025

CE	BW	WW	YW	MILK	MCE	MWWT
8.3	3.6	74.7	108.7	35.9	3.5	73.3

BW: 93 ■ ADJ WW: 795 ■ ADJ YW: 1310



VIRGINIA PRECISION 16C  
ANCHOR D OUTLOOK  
ANCHOR D KAE 255C  
S: **LRX OUTLOOK 14K**  
CROSSROAD RADIUM 789U  
WJS HEAVEN 9H  
WJS MS EGO 828F  
STARWEST BRYCK  
BLACK GOLD BRYK 109E  
BLACK GOLD HOTCHELLRAE58B  
D: **RAFTER 4T BRYLEE 22J**  
DOUBLE BAR D HEMI 183T  
RAFTER 4T BRYLEE 22B  
RAFTER 4T XANDRA 22X

**Non Diluter**

Another bull calf off our outlook herdsire with a low 90's birthweight. 6N has that extra look about him being smooth shouldered and nicely extended through his front and into his neck and skull. Last year we sold a full brother to Austen Steffan in North Dakota and this calf is of the same quality. 6N is out of a real nice made, productive young female that is proving to be very consistent in her ability to raise quality offspring. This is another hairy, well made outlook son that is noticeable in the pen.

38

## RAFTER 4T RANCHER 37N

Polled PB PG1536451 RAFT 37N Jan 13 2025

CE	BW	WW	YW	MILK	MCE	MWWT
4.8	4.5	88.9	129.1	30.8	1.9	75.3

BW: 102 ■ ADJ WW: 825 ■ ADJ YW: 1419



SVS BROOKS 669D  
SVS TYCOON 841F  
SVS RED ANNIE 411B  
S: **SVS RANCHER 42H**  
WS BEEF KING W107  
HLTS SAMMIE  
BRANT DONT YA LOVE ME  
LFE RED CASINO 3036X  
SOUTHSEVEN ASTRO 59A  
SOUTH HOLDEN MIS FREE 52U  
D: **RAFTER 4T CHIQUITA 37C**  
ANCHOR "T" METRO 4E  
RAFTER 4T SAHARA 37S  
LAZY H NATHALIE 27N

A Rancher with a fullblood pedigree on the bottom side going back to the great Anchor T Metro. A red badly with a higher frame score and plenty of stretch being one of the more growthy bulls in the pen.



39

## RAFTER 4T RANCHER 09N

Homo Polled PB PG1536462 RAFT 09N Jan 27 2025

CE	BW	WW	YW	MILK	MCE	MWWT
5.5	4.2	92.8	134.3	21.2	3.7	67.6

BW: 97 ■ ADJ WW: 810 ■ ADJ YW: 1460



## Homo Polled

Ever since we purchased Rancher in the summer of 2023 we have been excited to see the calves from his first breeding cycle. Rancher has been as popular and consistent as any red bull siring more high selling bulls and females than one can name. He truly is impressive person to see in person. 09N is one we feel really embodies the Rancher progeny. Dark red, hairy, solid footed, smooth made, with loads of dimension and muscle shape. The Rancher bulls in the pen are fun to look at, and are striking at all angles. The Rancher bull calves should leave their new owners with an impressive set of calves, and a pen of replacement females that will be second to none. 09N's dam raised one of our best bull calves last year that sold to Larry and Tracy Rudolph.



sire: SVS Rancher 42H



maternal sib sold to Rudolph Resources

SVS BROOKS 669D  
SVS TYCOON 841F  
SVS RED ANNIE 411B  
S: **SVS RANCHER 42H**  
WS BEEF KING W107  
HLTS SAMMIE  
BRANT DONT YA LOVE ME

WFL WESTCOTT 24C  
RF CAPACITY 742E  
RF FAMOUS 409B  
D: **RAFTER 4T MS UNLIMITED 1050H**  
R PLUS BLACKEDGE  
DANA MS UNLIMITED 1050Y  
DANA MISS UNLIMITED 8028U

40

## RAFTER 4T RANCHER 45N

Homo Polled PB PG1536448 RAFT 45N Jan 9 2025

CE	BW	WW	YW	MILK	MCE	MWWT
7.7	3.1	90.5	133.8	23.8	3.5	69.1

BW: 96 ■ ADJ WW: 759 ■ ADJ YW: 1321



## Homo Polled

Another impressive Rancher that is amongst our favorites. As dark red as you can make one that is heavy middledd in his lower third. 45N stems from and Erixon cow that we purchased out of the Border City Sale. She has left a lasting impact on our cow herd with more than a handful of females in production. The Rancher progeny really are the easy doing kind that ranchers love.



sire: SVS Rancher 42H

SVS BROOKS 669D  
SVS TYCOON 841F  
SVS RED ANNIE 411B  
S: **SVS RANCHER 42H**  
WS BEEF KING W107  
HLTS SAMMIE  
BRANT DONT YA LOVE ME

DOUBLE BAR D LIBERATOR 412E  
ERIXON LAD 73G  
ERIXON LADY 103X  
D: **RAFTER 4T LADY RED 45J**  
ERIXON RELENTLESS 110D  
ERIXON LADY 35F  
EAST POPLAR MS SKY 511C



41

## RAFTER 4T RANCHER 35N

Homo Polled PG1536449 RAFT 35N Jan 11 2025

CE	BW	WW	YW	MILK	MCE	MWWT
12.5	1.0	92.3	136.4	21.7	6.7	67.9

BW: 81 ■ ADJ WW: 803 ■ ADJ YW: 1302



## Homo Polled

35N stems from the same cow family as the 45N bull calf with a very moderate 81lb birthweight and an impressive calving ease number that is within the top 10 percentile. Having the calving ease specialist Epic on the dams side is an asset as well. With as much calving ease bred into 35N it is important to note his very strong performance epds ranking in the top 10 and 15 percentiles respectively. A genetic combination that is tough to find. A calf that is shorter tailed from maybe being left out in the cold a tad too long, but that doesn't take away from this heavy muscled beef bull.



sire: SVS Rancher 42H

SVS BROOKS 669D  
SVS TYCOON 841F  
SVS RED ANNIE 411B  
S: **SVS RANCHER 42H**  
WS BEEF KING W107  
HLTS SAMMIE  
BRANT DONT YA LOVE ME

WS ALL ABOARD B80  
WS EPIC E152  
WS MAJESTIC Z133  
D: **RAFTER 4T DYNAMITE 35H**  
ERIXON RELENTLESS 110D  
ERIXON LADY 35F  
EAST POPLAR MS SKY 511C

42

## RAFTER 4T RANCHER 39N

Homo Polled PB PG1536468 RAFT 39N Feb 11 2025

CE	BW	WW	YW	MILK	MCE	MWWT
8.8	2.4	94.6	137.4	22.2	4.9	69.5

BW: 89 ■ ADJ WW: 829 ■ ADJ YW: 1391



## Homo Polled

Another Rancher calf that goes back to a no miss Epic mother that carries and extra shot of calving ease. A moderate birthweight with impressive performance number spreads. Soggy in his makeup and carrying loads of top, length, and hip. It may sounds like a broken record, but the consistency and uniformity in these Rancher calves is what we really admire.



sire: SVS Rancher 42H

SVS BROOKS 669D  
SVS TYCOON 841F  
SVS RED ANNIE 411B  
S: **SVS RANCHER 42H**  
WS BEEF KING W107  
HLTS SAMMIE  
BRANT DONT YA LOVE ME

WS ALL ABOARD B80  
WS EPIC E152  
WS MAJESTIC Z133  
D: **RAFTER 4T GUCCI 139H**  
MRL PRETTY RECKLESS 68B  
ERIXON LADY 139F  
ERIXON LADY 133U



43

## RAFTER 4T RANCHER 3N

Polled PB PG1536465 RAFT 3N Feb 2 2025

CE	BW	WW	YW	MILK	MCE	MWWT
8.3	3.0	80.7	115.9	28.8	5.5	69.2

BW: 91 ■ ADJ WW: 784 ■ ADJ YW: 1410



Again, a Rancher calf with a moderate birthweight that has grown into a very strong individual. We have really been impressed with the Rancher calves coming so easy and growing like weeds. They are real smooth fronted and attractive headed and 3N is no exception. 3N is a calf with some extra added body that comes in a blaze package which is always desirable. A cool twist on pedigree with a shot of fullblood on the bottom side.



sire: SVS Rancher 42H

SVS BROOKS 669D  
SVS TYCOON 841F  
SVS RED ANNIE 411B  
S: **SVS RANCHER 42H**  
WS BEEF KING W107  
HLTS SAMMIE  
BRANT DONT YA LOVE ME

KOP CROSBY 137W  
KOP ESPOSITO 95Y  
KOP MS TOUCHDOWN 67U  
D: **RAFTER 4T ARISTA 33E**  
RAFTER 4T INFERNO 76Y  
RAFTER 4T ARISTA 33A  
RAFTER 4T XYRA 3X

44

## RAFTER 4T RANCHER 32N

Homo Polled PB PG1536454 RAFT 32N Jan 15 2025

CE	BW	WW	YW	MILK	MCE	MWWT
8.5	3.0	92.2	137.2	25.2	5.3	71.3

BW: 88 ■ ADJ WW: 721 ■ ADJ YW: 1315

**Homo Polled**

32N is another calf that follows close in type to his half siblings. There is definitely a lot of predictability in these Rancher progeny as they type so closely together. 32N is backed by an excellent young KWA Roosevelt daughter who we admire quite a bit which contributes to a nice set of epds.



sire: SVS Rancher 42H

SVS BROOKS 669D  
SVS TYCOON 841F  
SVS RED ANNIE 411B  
S: **SVS RANCHER 42H**  
WS BEEF KING W107  
HLTS SAMMIE  
BRANT DONT YA LOVE ME

CDI AUTHORITY 77X  
KWA ROOSEVELT 63F  
KWA MS ROCK 138Z  
D: **RAFTER 4T ZARA 32J**  
LRX RED ACE 71X  
RAFTER 4T ZARA 10Z  
RAFTER 4T XENA 10X



45

## RAFTER 4T RANCHER 05N

Homo Polled PB PG1536464 RAFT 05N Jan 26 2025

CE	BW	WW	YW	MILK	MCE	MWWT
6.6	4.1	91.6	131.9	23.7	4.1	69.5

BW: 96 ■ ADJ WW: 867 ■ ADJ YW: 1469



## Homo Polled

A Rancher calf that was our highest adjusted weaning calf with an average daily gain of almost 4lbs from weaning to yearling. Out a real nice young cow with a level and tight udder, 05N would be one of the longer spined bulls in the pen with a higher frame score. 05N stems back to a Crossroad cow that has been one of our most productive red cows over the years.



sire: SVS Rancher 42H

SVS BROOKS 669D  
SVS TYCOON 841F  
SVS RED ANNIE 411B  
S: **SVS RANCHER 42H**  
WS BEEF KING W107  
HLTS SAMMIE  
BRANT DONT YA LOVE ME

ERIXON WAR PAINT 42D  
RAFTER 4T REDEMPTION 59F  
ANCHOR D FLOSSIE 59X  
D: **RAFTER 4T COLLEEN 5H**  
CMS/BMD PAPARAZZI 205Z  
CROSSROAD COLLEEN 5C  
CROSSROAD YOREEN 334Y

46

## RAFT/JSEE RANCHER 80N

Polled PB PG1538982 JSEE 80N Feb 15 2025

CE	BW	WW	YW	MILK	MCE	MWWT
5.8	4.7	96.2	138.9	25.8	2.8	73.9

BW: 91 ■ ADJ WW: 785 ■ ADJ YW: 1438



80N is a bull we own with our great friends at Jayshaw Simmentals. A calf born in later February who is sure not out of place in the pen and has exhibited a ton of growth catching up to the rest of the pen. A calf that is dark and red and as hairy as you can make one that we really admire for his balance and muscle.



sire: SVS Rancher 42H

SVS BROOKS 669D  
SVS TYCOON 841F  
SVS RED ANNIE 411B  
S: **SVS RANCHER 42H**  
WS BEEF KING W107  
HLTS SAMMIE  
BRANT DONT YA LOVE ME

TNT BOOTLEGGER Z268  
PERKS BOOTLEGGER 1051E  
KOP MS TRADEMARK 110W  
D: **JAYSHAW 69J**  
COME AS U R RED ROCKET  
TY-D'S JUST PEACHY 3F  
MISS PARKHILL 126U



47

## RAFTER 4T RANCHER 43N

Homo Polled PB PG1536452 RAFT 43N Jan 15 2025

CE	BW	WW	YW	MILK	MCE	MWWT
4.2	4.8	97.1	139.9	25.1	1.9	73.7

BW: 100 ■ ADJ WW: 768 ■ ADJ YW: 1528



SVS BROOKS 669D  
SVS TYCOON 841F  
SVS RED ANNIE 411B  
S: **SVS RANCHER 42H**  
WS BEEF KING W107  
HLTS SAMMIE  
BRANT DONT YA LOVE ME  
COME AS U R RED ROCKET  
MRL MISSILE I38C  
MRL MISS 2423Z  
D: **SUN STAR JOSIE 43H**  
LFE PROVIDER 344B  
SUN STAR JOSIE 51D  
PEACOCK'S BIG JOSIE 8Y

## Homo Polled

43N is another one of the longer spined Rancher calves in the pen sporting an extra shot of white. A red baldy that is very attractive and smooth fronted in his make up. Impressive performance back this calf, ranking in the top 5% for weaning and 10% for yearling numbers. Gaining 4.75lbs/day from weaning to yearling, 43N's progeny should really grow. We sold a maternal sister to Balisky Farms a few years back who was very competitive in the show ring.

48

## RAFTER 4T RANCHER 11N

Homo Polled PB BPG1539358 RAFT 11N Jan 29 2025

CE	BW	WW	YW	MILK	MCE	MWWT
6.1	3.8	92.6	129.6	22.3	4.1	68.6

BW: 94 ■ ADJ WW: 805 ■ ADJ YW: 1352



SVS BROOKS 669D  
SVS TYCOON 841F  
SVS RED ANNIE 411B  
S: **SVS RANCHER 42H**  
WS BEEF KING W107  
HLTS SAMMIE  
BRANT DONT YA LOVE ME  
WHEATLAND BENTLEY 630D  
IPU BENTLEY 81F  
CLAYHILL FANCY LUCA 39A  
D: **RAFTER 4T OPAL 15J**  
LFE HEAVY HITTER 352C  
MADER OPAL 1E  
CG BLACK OPAL 652S

## Homo Polled

The second of two in our black Rancher offering. 11N is real long bodied calf who has a real smooth build and is out of one of real good females that stem back to the Opal cow family. The Mader Opal cow we purchased many years ago has left her mark on her herd producing elegant beautifully uddered females that pack some punch as well as mothering some real powerful bull calves over the years. 11N is bred genetically to perform.

49

## RAFTER 4T AMARETTO 2N

Polled PB BPG1536467 RAFT 2N Feb 4 2025

CE	BW	WW	YW	MILK	MCE	MWWT
3.4	5.2	73.9	104.6	24.6	4.4	61.6

BW: 98 ■ ADJ WW: 826 ■ ADJ YW: 1436



LFE MCDAVID 413C  
SPRINGCREEK DENALI 21E  
SPRINGCREEK LIMA 69Y  
S: **ULTRA AMARETTO 42H**  
SPRINGCREEK LOTTO 52Y  
TRIPLE ROSE CYPRESS  
MS MAXIE LOU M112S  
KOP CROSBY 137W  
KOP ESPOSITO 95Y  
KOP MS TOUCHDOWN 67U  
D: **RAFTER 4T WISH 22G**  
DOUBLE BAR D HEMI 183T  
RAFTER 4T WISH 22W  
RAFTER 4T TABITHA 22T

An attractive "bald" out of our Amaretto herdsire. 2N is attractive in his make-up, carries some extra length, and is soggy throughout. This is a calf that will throw some extra chrome and growth on his calves. His grand sire on the dam's side, Kop Esposito, was used heavily and left us with a great set of females to build around.



50

## RAFTER 4T RANCHER 40N

Homo Polled PB BPG1536447 RAFT 40N Jan 9 2025

CE	BW	WW	YW	MILK	MCE	MWWT
4.9	5.2	95.0	141.5	23.5	2.7	71.0

BW: 101 ■ ADJ WW: 935 ■ ADJ YW: 1434



## Homo Polled

40N is the real standout in the black pen, and being out of Rancher is sure to create some excitement. Massive hipped, huge bodied, large testicled, attractive, and moves with ease throughout the pen. Early visitors have sure been impressed with 40N's sheer mass and power being the heavyweight in the pen. 40N was mothered by what would be one of the pick for favorite black cows on the farm, Mcintosh Funny Face. The funny face cow is about a broody as one can make, and is one we would love to have 20 of. Her Shakedown bull last year sold to Haman Farm and Simmental in North Dakota as the sales black high seller. 40N is bred to be an excellent producer and asset to his new owners.



sire: SVS Rancher 42H



40N maternal sib sold to Haman Simmentals

SVS BROOKS 669D  
SVS TYCOON 841F  
SVS RED ANNIE 411B  
S: **SVS RANCHER 42H**  
WS BEEF KING W107  
HLTS SAMMIE  
BRANT DONT YA LOVE ME

LFE BOUNTY 3118Z  
WLB BOUNTY HUNTER 365C  
LFE BS MARY 26A  
D: **MCINTOSH FUNNY FACE 40F**  
SAS T101 SWEET MEAT  
MCINTOSH FUNNY FACE 31Z  
IPU RED POCAHOTAS 139M

51

## RAFTER 4T POCKET ACES 46N

Homo Polled Homo Black PB PG1536453 RAFT 46N Jan 15 2025

CE	BW	WW	YW	MILK	MCE	MWWT
6.5	3.8	90.2	136.2	20.1	4.0	65.2

BW: 92 ■ ADJ WW: 894 ■ ADJ YW: 1603



## Homo Polled Homo Black

46N is a calf that we have been excited to write footnotes on since he was born. The first calf out of a heifer calf we purchased at Friday Night Lights. Emmy was part of a flush that averaged more than 50k, and we were thrilled to be able to bring our pick home. The Emmy cow family is responsible for numerous high sellers including a heifer calf for 65k and a bull calf for 90k in recent months. Combine that with poker face and you get a standout in our bull pen. Large framed, huge hipped, that is about attractive as you can make one. You can appreciate this calf from all angles and going from a low 90's birthweight to an almost 900lb adjusted weaning weight is also impressive. This calf should leave his new owners with an outstanding set of replacement females to build a herd around as well as a set of bull/steer calves with plenty of performance.



sire: Drake Poker Face



dam: NGDB Emmy 466L

SVF/NJC MO TOWN M216  
JS SURE BET 4T  
JS BLACK MAGIC WOMAN 13P  
S: **DRAKE POKER FACE 2X**  
TCF/RCC TEMPTATION GJ640  
DRAKE TULA 1R  
DCC 5N

NGDB STRUCTURE 34D  
RF CALIBER 014G  
RF NOT JUST A FLIRT 404B  
D: **NGDB EMMY 466L**  
TJSC HAMMER TIME 35D  
BRAMLETS/DBLG EMMY G930  
BRAMLETS IMAGE D622



52

## RAFTER 4T SHAKEDOWN 50N

Homo Polled PB BPG1536459 RAFT 50N Jan 24 2025

CE	BW	WW	YW	MILK	MCE	MWWT
3.6	4.9	86.1	118.5	17.0	3.2	60.1

BW: 96 ■ ADJ WW: 793 ■ ADJ YW: 1545



NCB COBRA 47Y  
 NGDB STRUCTURE 34D  
 NGDB LOUISE 411 B  
 S: **RF SHAKEDOWN 074H**  
 CCR COYBOY CUT 5048Z  
 IPU MS. COYBOY CUT 135D  
 IPU MS. TULA 19B

KOP CROSBY 137W  
 KOP ESPOSITO 95Y  
 KOP MS TOUCHDOWN 67U  
 D: **RAFTER 4T MS UNLIMITED 1050G**  
 R PLUS BLACKEDGE  
 DANA MS UNLIMITED 1050Y  
 DANA MISS UNLIMITED 8028U



sire: RF Shakedown



1050M maternal sib sold to Teagan &amp; Robyn Tyckowsky

## Homo Polled

50N is a Shakedown calf with a lot to offer. Real soggy and big bodied with an adjusted yearling weight of 1545 and gained at a very impressive rate of 4.7 lbs per day from weaning to yearling. If rate of gain is important to you than this is your guy. We have been real impressed with the shakedown calves over the past two years. The 1050G cow stems back to our Ms Unlimited cow we purchased out of Chad Beagles dispersal and she really has left a strong female influence on our herd. Last years good bull calf sold to Teagan and Robyn Tyckowsky.

53

## RAFTER 4T LINCOLN 18N

Homo Polled PB BPG1536458 RAFT 18N Jan 22 2025

CE	BW	WW	YW	MILK	MCE	MWWT
2.4	4.7	72.7	113.6	24.7	1.8	61.1

BW: 97 ■ ADJ WW: 808 ■ ADJ YW: 1442



LFE STRATTON 3094F  
 LFE LOYALTY 836H  
 IPU 10D POCAHONTAS 117F  
 S: **SUNNY VALLEY LINCOLN 67L**  
 OVHF TRIBUTE 138E  
 SUNNY VALLEY RED DESIRE 81H  
 RDD MS SHEAR DESIRE 4X

WHEATLAND BULL 680S  
 TY-D'S SHOCK & AWE 7F  
 BEECH BRO WESTERN STAR  
 D: **LBCC JOKES IN CLASS 181J**  
 WHEATLAND BULL 319A  
 LBCC DREAMS IN CLASS 640D  
 LBCC BEST IN CLASS 405B



sire: SVS Lincoln

## Homo Polled

18N is one you have marked in your catalogue. SVS Lincoln is our new red blaze herdsire that we purchased a two springs ago from Sunny Valley. When on the hunt for bull that would provide some calving ease without giving up performance, Lincoln came to the top of our list. He has matured impressively and is one you will be seeing plenty more of in the future. 18N is a spitting image of his picture. Big hiped, large topped, that moves with ease throughout the pen. He has been noticed easily by visitors and is marked with a perfect blaze. Out of a female that we purchased out of Friday Night Lights from our friends at Lake Bottom Cattle Co; this is an exciting herdsire prospect.



54

## RAFTER 4T LINCOLN 17N

Homo Polled PB BPG1536466 RAFT 17N Feb 1 2025

CE	BW	WW	YW	MILK	MCE	MWWT
1.8	5.3	73.6	109.6	26.5	3.0	63.3

BW: 102 ■ ADJ WW: 858 ■ ADJ YW: 1444



## Homo Polled

Here is the second of our black Lincoln sired calves. 17N patterns very similar to his half sibling, 18N. The Lincoln bull has been very consistent in our early experience with throwing that extra little bit of white into his calves which has been highly marketable as of late in the cattle industry. 17N is sound footed, hairy, and is one we envision maturing into a powerful and productive sire for his new owners.



sire: SVS Lincoln

LFE STRATTON 3094F  
LFE LOYALTY 836H  
IPU 10D POCAHONTAS 117F  
S: **SUNNY VALLEY LINCOLN 67L**  
OVHF TRIBUTE 138E  
SUNNY VALLEY RED DESIRE 81H  
RDD MS SHEAR DESIRE 4X

SPRINGCREEK DENALI 21E  
ULTRA AMARETTO 42H  
TRIPLE ROSE CYPRESS  
D: **RAFTER 4T ALYSSA 317K**  
KOP ESPOSITO 95Y  
RAFTER 4T ALYSSA 317E  
RAFTER 4T ALYSSA 317A

55

## RAFTER 4T TOP TIER 06N

Homo Polled PB BPG1536450 RAFT 06N Jan 11 2025

CE	BW	WW	YW	MILK	MCE	MWWT
10.1	2.1	90.2	120.0	23.6	3.2	68.7

BW: 84 ■ ADJ WW: 755 ■ ADJ YW: 1262



## Homo Polled

Our choice for high calving ease possible options would be 06N. Starting out at only an 84lb birthweight he has matured into a promising calving easy herdsire. Smooth shouldered and long fronted that extends into a small skull. With a calving ease over 10 and weaning/yearling weights in the high percentiles of the breed we have been impressed with the performance of 06N that comes in a calving ease package. Top Tier has been one of the go to heifer options in recent years and being out of a cow lineage that goes back to our WLB 64D cow, 06N is genetically well bred. The added bonus of an attractive blaze is also exciting for his new owners.



sire: WLB Top Tier

TNT BOOTLEGGER Z268  
MAR MAC UTAH WHISKY 52E  
MAR MAC UTAH'S DREAM 79U  
S: **WLB TOP TIER 456G**  
SUNNY VALLEY FORCE 47Y  
WLB 47Y FAE 343E  
WLB 756T TRESSIE 3556B

MADER WALK THIS WAY 224B  
MADER WALK THE LINE 92J  
IRCC DARLIN' 613D  
D: **RAFTER 4T TARA 064L**  
MRL EL TIGRE 52Z  
WLB 52Z TARA 4164D  
WLB 156S BELLE 3552W





## JAYSHAW SIMMENTALS

Jason, Shawna, Ethan & Eboni Bast  
Box 49 - Lavoy, Alberta - T0B 2S0

Jason's Cell: (780) 603-0676  
Shawna's Cell: (587) 280-0956

jseebast@gmail.com



First, we would like to take this opportunity to thank all our previous buyers and welcome new ones. Again we will be offering a couple white bulls in the Charolais division we don't have many, but we are working on building our numbers up. Also a special thank you to Back and Black Simmentals, JNR Farms, Fessy Enterprises, for purchasing our heifer calves in December in Red Deer. We look forward to seeing you in Camrose.

# 56

### JAYSHAW MR NICKLEBACK 13N

Horned FB 1524726 JSEE 13N Jan 4 2025

CE	BW	WW	YW	MILK	MCE	MWWT
3.6	5.9	85.5	117.1	30.0	1.5	72.8

BW: 92 ■ ADJ WW: 859 ■ ADJ YW: 1363



LFE CAMERO 510B  
LFE MURRAY 503F  
SBV MISS BEAT 120C  
S: **SBV MARK 721K**  
LFE LANDSLIDE 572Z  
SBV MISS BEAT 94C  
LFE FS MISS BEAT 162W

JNR'S SLATE  
JNR STERLING  
JNR'S GRACEFUL 613C  
D: **JASHAW MS 38J**  
SOUTH SEVEN XANTHUS 89X  
JAYSHAW CARMEN  
JAYSHAW ZAHAR

#### Non Diluter

We are extremely happy with our first set of calves off SBV 721K and 13N is a prime example of why, dark red, double googled and an abundance of hair, long, and a deep meat wagon with a great set of EPD. 13N ,36N 54N 61N offering in the sale are the most consistent set of Fullblood bulls we have raised.



sire : SBV Mark 721K



57

## JAYSHAW MR NIXON 54N

Horned FB 1524740 JSEE 54N Jan 17 2025

CE	BW	WW	YW	MILK	MCE	MWWT
1.3	6.9	88.0	125.2	34.0	0.4	78.0

BW: 102 ■ ADJ WW: 908 ■ ADJ YW: 1364



LFE CAMERO 510B  
 LFE MURRAY 503F  
 SBV MISS BEAT 120C  
 S: **SBV MARK 721K**  
 LFE LANDSLIDE 572Z  
 SBV MISS BEAT 94C  
 LFE FS MISS BEAT 162W

STARWEST TOTAL VALUE  
 LRX TOTAL VALUE 163C  
 LRX MS 132Z  
 D: **WJS FAIR VALUE 824F**  
 JNR GRANITE  
 WJS MS GRANITE 76Z  
 GRINALTA'S PANTHEA 66P

**Non Diluter**

A powerful 721K son again blood red, hairy, good nuttred and a great temperament. 54N has that herd bull presence about him. A Bull we think, will have a great future.



sire: SBV Mark 721K

58

## JAYSHAW MR NEMO 36N

Horned FF 1524736 JSEE 36N Jan 10 2025

CE	BW	WW	YW	MILK	MCE	MWWT
0.9	6.6	86.4	118.6	26.1	1.5	69.3

BW: 100 ■ ADJ WW: 849 ■ ADJ YW: 1353



MFI BAMBAM  
 JNR'S SLATE  
 JNR JANUS  
 S: **JNR STERLING**  
 JNR'S SALTON  
 JNR'S GRACEFUL 613C  
 JNR GRACEFUL 410A  
 JNR BOULDER  
 JNR BALDWIN  
 JNR TAJSA 475B  
 D: **WOLFES KYLIE FF56K**  
 BRINK GERONIMO A310  
 WOLFES HELGA FF55F  
 MFI HELGA 9195

**Non Diluter**

A full fleck Sterling son that puts his sires characteristics all together in one package. His mother has a perfect utter and is just a nice all around cow. She calved as I am writing these footnotes and had a look like heifer calf to 36N.



sire: Sterling

JAYSHAW SIMMENTALS



59

## JAYSHAW MR SLEEP AT NIGHT 61N

Horned FB 1524754 JSEE 61N Jan 20 2025

CE	BW	WW	YW	MILK	MCE	MWWT
11.6	2.4	71.4	105.0	33.2	6.4	68.9

BW: 81 ■ ADJ WW: 802 ■ ADJ YW: 1402



METRO  
ANCHOR "T" METRO 4E  
GISELA  
S: **ANCHOR "T" LEGEND 7H**  
WESTDRUMS ANDREW  
ANCHOR "T" HELGA 10Y  
ANCHOR "T" FRIEDA 2T  
VIRGINIA PRECISION 16C  
ANCHOR D OUTLOOK  
ANCHOR D KAEI 255C  
D: **NUG TIARIA 476L**  
IPU CLASSIC 1X  
NUG NORMA 529C  
MECK RACHEL 173R

**Non Diluter**

61N is out of first calf heifer we purchased from the classic sale from Maxwells. A proven calving ease pedigree with Legend and Outlook a small BW and a CE of over 11. Dark red, hairy, two goggles, and looking like he has good testicles for a calving ease bull. We are very excited about 61N and would like to utilize in our program if the opportunity is there at buyers convenience.

60

## JAYSHAW MR NELSON 59N

Polled FB P1524745 JSEE 59N Jan 20 2025

CE	BW	WW	YW	MILK	MCE	MWWT
3.3	5.9	71.0	95.1	33.7	1.4	69.2

BW: 99 ■ ADJ WW: 848 ■ ADJ YW: 1320



SIBELLE SPARTACUS 8A  
SIBELLE POL DARWIN 21F  
SIBELLE POL MOLLY 7B  
S: **FAIRVIEW ORIGIN 918K**  
KEATO PLD CLASSIFIED 10A  
KEATO PLD ELOQUENCE 18E  
KEATO BROOK 8B  
RV NICKELBACK 6U  
FGAF AGREEMENT 030D  
CHAMPS MONEYPENNY  
D: **SUNVILLE MISS AGREEMENT 45K**  
BEECH BROS BOOSTER 52Y  
SUNVILLE MISS BOOSTER 36C  
KOP MS GLADIATOR 204Y

**Non Diluter**

A powerful Fullfleck Polled FB bull that should offer the ability to maintain dark pigment and strong colour expression in his offspring.

61

## JAYSHAW MR NORM 7N

Scurred PB SG1524725 JSEE 37N Jan 1 2025

CE	BW	WW	YW	MILK	MCE	MWWT
7.9	3.5	79.3	105.4	23.9	3.9	63.6

BW: 80 ■ ADJ WW: 905 ■ ADJ YW: 1313



MFI BAMBAM  
JNR'S SLATE  
JNR JANUS  
S: **JNR STERLING**  
JNR'S SALTON  
JNR'S GRACEFUL 613C  
JNR GRACEFUL 410A  
LFE RED CASINO 3036X  
RAINALTA DOUBLE DOWN 77A  
RAINALTA LASS 16T  
D: **RAINALTA DOUBLE ACCEL 12C**  
IPU ACCELERATOR 46U  
RAINALTA MISS ACCEL 55Z  
HCCL 27M

A powerful Sterling son out of a red cow, his full sister was purchased out of the Red and Black sale by Redtop Simmentals. Consistency is in the pedigree. 7N was the heaviest at weaning and at yearling weigh in time.



sire: Sterling



62

## JAYSHAW MR NOEL 68N

Hetero Polled PB PG1524757 JSEE 68N Jan 28 2025

CE	BW	WW	YW	MILK	MCE	MWWT
1.4	6.1	79.9	120.3	20.4	-0.6	60.4

BW: 106 ■ ADJ WW: 858 ■ ADJ YW: 1386



R PLUS VENOM 4006B  
R PLUS REDDINGTON 0143H  
MISS R PLUS 6168D  
S: **BLACK GOLD REDDINGTON 158L**  
KUNTZ SHERIFF 8A  
BLACK GOLD MS JOSIE 53F  
BLACK GOLD MS JOSIE 1D  
TNT 90 PROOF Z401  
WFL WESTCOTT 24C  
WFL SWEET LICIOUS 1044X  
D: **KUNTZ BIANCA 723E**  
TYMARC JEP 85Z  
OH KAY BIANCA 50B  
D BAR C DEB 956W

**Hetero Polled**

A polled dark red bull with an exceptional hair coat with lots of top and meat, just an all around good bull.

63

## JAYSHAW MR NICK 2N

Homo Polled PB PG1524723 JSEE 2N Jan 1 2025

CE	BW	WW	YW	MILK	MCE	MWWT
14.5	-0.2	62.2	84.8	20.8	7.0	51.9

BW: 70 ■ ADJ WW: 829 ■ ADJ YW: 1269



WHEATLAND KILL SWITCH  
JPCC IGNITION 166F  
SPRINGCREEK JAYCEE 53W  
S: **KUZ MR IGNITION 7K**  
KUNTZ SUPER DUTY 4Y  
KUZ MISS SUPER DUTY 43G  
KUZ MISS WINCHESTER 115X  
R PLUS 20X  
BLI RED ADDICTION 224Z  
LFE RS MISS ARNOLD 609U  
D: **JAYSHAW MS CHARMEN**  
HSN RAFFLES 17U  
HSN RAFFLES 23Y  
HSN ZIMA 72M

**Homo Polled**

An Ignition son that could be headed for the heifer pen. An excellent set of EPDS with built in calving ease, his mother is a no miss cow, and we wanted to breed a few of our better cows to see if the BW would stay consistent from cows and heifers.

64

## JAYSHAW MR NO IT ALL 3N

Homo Polled PB PG1531207 JSEE 3N Jan 1 2025

CE	BW	WW	YW	MILK	MCE	MWWT
10.2	1.7	66.4	94.5	26.3	6.5	59.5

BW: 79 ■ ADJ WW: 817 ■ ADJ YW: 1353



WHEATLAND KILL SWITCH  
JPCC IGNITION 166F  
SPRINGCREEK JAYCEE 53W  
S: **KUZ MR IGNITION 7K**  
KUNTZ SUPER DUTY 4Y  
KUZ MISS SUPER DUTY 43G  
KUZ MISS WINCHESTER 115X  
SPRINGCREEK LOTTO 52Y  
JAYSHAW MR LOTTO 33D  
DOUBLE BAR D MISSY 414A  
D: **JAYSHAW MS LOTTO 27L**  
PERKS BOOTLEGGER 1051E  
JAYSHAW MS HEIDI 3H  
JAYSHAW MS DREAM 11F

**Homo Polled**

We have been breeding all our first calf heifers to the Ignition bull with limited issues. A 79-pound BW on 3N could be worth trying in the heifer pen. Good colour, hairy, and a little chunk of a bull, out of first calf heifer.

JAYSHAW SIMMENTALS



65

## JAYSHAW MR NORMAN 33N

Polled PB BPG1524733 JSEE 33N Jan 8 2025

CE	BW	WW	YW	MILK	MCE	MWWT
7.1	3.8	69.9	99.1	23.4	4.0	58.4

BW: 90 ■ ADJ WW: 781 ■ ADJ YW: 1277



LFE CAMERO 510B  
LFE MURRAY 503F  
SBV MISS BEAT 120C  
S: **SBV MARK 721K**  
LFE LANDSLIDE 572Z  
SBV MISS BEAT 94C  
LFE FS MISS BEAT 162W  
WHEATLAND BULL 786T  
WHEATLAND BULL 356A  
WHEATLAND LADY 508R  
D: **M&S MS HONEY BEE 34C**  
SAND RANCH HAND  
GGRR RH BLK DESTINY 4T 2W  
GGRR IR BLK DESTINY 4T

Ethan's first bull in the sale. This black baldy bull combines eye appeal with performance, stout made, wide based and deep bodied with a hairy hair coat. He's an excellent choice for adding pounds, efficiency, and market ability to your cow herd, a bull that would work great on some younger cows.

66

## JAYSHAW MR NICKELBACK 47N

Polled PB PMC913854 JSEE 47N Jan 14 2025

CE	BW	WW	YW	MILK	MCE	MTL
5.3	0.7	60.0	125.0	21.0	5.7	51.0

BW: 96 ■ ADJ WW: 824 ■ ADJ YW: 1296



LT LEDGER 0332 P  
SOS APEX PLD 139F  
TMJF BERYLE 447B  
S: **JAYSHAW MR APEX 54K**  
SOS HOME GROWN 15C  
SOS FANCY 107G  
SOS FANCY 2D  
SPARROWS SANCHEZ 715T  
CML ENCORE 4Y  
CML PLD WILMA 3S  
D: **WJS JEWELS 109J**  
CSS SIR GRIDMAKER 1X  
XXX MISS GRID 747Z  
DAVD GOLDEN WHITE 145D

You'll be hard-pressed to find hairier Charolais than these two white bulls for offer. Small headed just two good all around white bulls, hair quality is one of the most important traits we emphasize in both breeds.

67

## JAYSHAW MR NOTORIOUS 48N

Polled PB PMC913853 JSEE 48N Jan 15 2025

CE	BW	WW	YW	MILK	MCE	MTL
5.5	0.3	62.0	126.0	19.0	7.1	50.0

BW: 88 ■ ADJ WW: 775 ■ ADJ YW: 1303



LT LEDGER 0332 P  
SOS APEX PLD 139F  
TMJF BERYLE 447B  
S: **JAYSHAW MR APEX 54K**  
SOS HOME GROWN 15C  
SOS FANCY 107G  
SOS FANCY 2D  
CIRCLE CEE LEGEND 307A  
CEDARLEA TY COBB 78C  
CEDARLEA STELLA 15S  
D: **WRANGLER MS EVONNE 174G**  
MULKAY'S RHM 50B  
SPRUCE VIEW EVONNE 631E  
SVCH AIDEN 136B

Refer to 47N comments these two bulls are like peas in a pod.



# THANK YOU TO OUR LAST YEAR'S BUYERS

Birch Lake Simmentals\*  
 O Suchy Farms\*  
 Jae Ventures\*  
 Rafter 4T\*  
 Urichuk Farms\*  
 David Crawford\*  
 Joe Holt\*  
 Grassy Flat Ranch\*  
 Spruceview Acres\*  
 Anchor D Simmentals\*  
 Freeman Herron  
 Schipper Farms  
 Brock Ranches (Sierra Ebbesen)\*  
 MCL Farms  
 Cannon Farms  
 Street Helgeson  
 Gran Tan Ranch  
 Bendell Cattle  
 Iron Creek Farms  
 1443991 AB Ltd  
 Gordon Uganecz  
 Jason Suchy

Jeremy Robinson  
 H Bar M Land And Cattle\*  
 Pawluk Farms\*  
 Nolara Farms\*  
 Willowdale Simmentals  
 Rocking R Simmentals  
 Albrecht Farms  
 MCG Simmentals  
 Forden Fairview Farms  
 Sunville Simmentals\*  
 Wolfe Lake Farms  
 Southseven Farms  
 Crossroad Farms  
 Northwind Ag  
 Rancho La Joya  
 Austen Steffan  
 Haman Farm and Simmental\*  
 Teagan & Robyn Tychowsky\*  
 CLH Farms\*  
 Larry Anderson  
 Ten Bar Ranch\*  
 Smiling LB Land and Cattle\*

Hairy Hill Farming Co\*  
 Tri Add Farms Ltd/Ken Kummer  
 Kilar Land and Cattle  
 Mark Weiss\*  
 870 Cattle Co\*  
 Ryan McLaughlin  
 Joe Holt\*  
 Boyd Ranching  
 Jim Pulyk (NLS)  
 Kevin Marcinek (4M Cattle)  
 K-G Land and Cattle  
 Dylan Laurenceson\*  
 Blake Laurenceson\*  
 Tara Lynn Simmentals  
 Justin Ewasiuk  
 Hasiuk Farms \*  
 Brandon Feschuk\*  
 Back In Black Simmentals  
 JNR Simmentals  
 Skyline Simmentals\*  
 \* repeat buyers



On September 26/2025 we lost Rod Chizawsky from Foresee Cattle Company and a member of the Bullfest group in a tragic farm accident. His dedication to the cattle industry was not only in providing a product but making customer satisfaction his goal. No different than the some twenty prior years as a John Deere salesperson. His bold voice echoing through the barn will be missed.

## TERMS AND CONDITIONS

**Terms** - The terms of the sale are cash or cheque payable at par at sale location unless satisfactory credit arrangements have been made previous to the sale. The right of property shall not pass until after settlement is made. Should any purchaser fail to settle for his purchase, the consignor, reserves full power to resell the animal to the best advantage, either publicly or privately, without further notice. Any loss arising from such resale together with keep and all other expenses shall be payable by the defaulter. All settlements must be made with the clerks of the sale before any cattle will be released.

**Disputes** - In case of disputes, bidding will be re-opened between the parties involved. If no further bid is made, the buyer will be the person from whom the auctioneer accepted the last bid. The auctioneer's decision in such matters will be final.

**Purchaser's Risk** - Each animal becomes the risk of the purchaser as soon as sold. Animals will be cared for at the purchaser's risk for a reasonable length of time.

**Announcements** - Announcements from the auction block will take precedence over the printed matter in the catalogue. Buyers are therefore cautioned to pay attention to any such announcements.

**Registry of Cattle** - The proper Registration or Recordation paper, as the case may be, will be transferred and furnished to the buyer for each animal after settlement has been made.

**Settlement** - No incidental expenses such as feed, care, A.I. signing fees, interest, veterinary charges, etc. will be charged by either party when making settlement. If the seller is successful in proving the animal in question to be a breeder, then said animal will be reclaimed by the purchaser. Should the seller fail to prove the animal a breeder, then the buyer is guaranteed a satisfactory replacement. In no event shall the seller be responsible for more than the purchase price. Should a dispute arise over the quality of a replacement animal, the consignor will appoint a mediator.

**Accidents** - Although every precaution will be taken to protect the safety and comforts of buyers, neither the consignors, the auctioneer, or association assumes any responsibility in this matter, and disclaims any liability, legal or otherwise, in the event of accidents or loss of property.

**Rights and Obligations** - The above terms and conditions of the sale shall constitute a separate transaction and the rights and obligations of the two.



R Stuart  
Box 2118  
Vegreville, Alberta  
T9C 1T3



If you do not wish to receive this catalogue, call 780.632.9358  
or email [sseven@telusplanet.net](mailto:sseven@telusplanet.net)  
and we will remove you from our mailing list.  
Thank-You – Bull Fest Group

**BULLFEST 26**

**SIMMENTAL BULL SALE**

CATALOGUE BY: *cattfepics.com*