



**Beck Farms**

**McCoy Cattle Co.**

**17<sup>th</sup>**

**BULL SALE**



**WEDNESDAY, FEBRUARY 25, 2026 - 2:00PM** *Beck Farms Sale Facility, Milestone, SK*

# Welcome to the sale *from Beck Farms*



Jorja, Wade, Cynthia, Mason



Kaden, Danica, Tami, Kylie, Mark



The Beck Family

Welcome to our 17th Annual Bull Sale...

Wow what a year!! This cattle market continues to climb. Where it will stop is anyone's guess. With the North American cow herd at all time low levels, the supply will struggle to keep up with demand for years to come. Even at record high cattle prices, ground beef is still one of the most economical sources of protein available on supermarket shelves. All signs point to sustained profitability in the beef industry for years to come. But rest assured some politician will try to screw that up.

This is my first paragraph from last year's sale welcome. So much remains true today. There have been ripples in the market, but just when you think it's going to drop, it comes back strong. It will be fun to ride this wave for as long as it lasts.

At Beck Farms, we do things differently than most purebred producers. Number one, we calve later. There's no January calving here and barely any February born. We don't creep feed. Our calves go out and grow on mother's milk and grass well into fall. Most years, there is snow on the ground when we wean the calves. That being said, when we do decide to get one ready to go to town, we can compete with the very best - as evidenced by lot 1.

This year's group of bulls is the most consistent set we've offered to date. Our sale bullpen this year is exciting to say the least. Quality from top to bottom. There is something here for everyone, from sleep easy heifer bulls to power bulls that can walk and talk with the best in the industry.

With this many two-year-olds to sell, we decided that it is best for everyone (bulls and people) to have a video sale. No animals will be coming through the barn. All the animals will be beside the barn in pens that are easily accessible and easy to evaluate the bulls in.

Please join us for lunch on sale day in our new heated sale barn on the farm. Be prepared to stay after for our annual fish fry. We hope to see you all on February 25, the bulls and the hospitality are guaranteed not to disappoint. If you have any questions or would like a tour before the sale, feel free to contact me at 306 436 7458 or Mason 639 440-7027. Better yet, find Jorja on sale day and ask for her opinion. We are more than happy to help you with your bull selection.



*Wade*

## BECK FARMS

**Gary & Donna Beck; Wade & Cynthia Beck; Mark & Tami Beck**  
Box 11 Milestone, SK S0G 3L0  
Wade: 306-436-7458 - Mason: 639-440-7027  
wcbeck@sasktel.net

## GENERAL INFORMATION

### *Point of Sale...*

Each animal becomes the risk of purchaser at time of sale.

### *Free Wintering...*

Bulls will be developed free of charge and discuss delivery dates with Wade and Chad.

### *Breeding Guarantee...*

We guarantee to provide a sound breeding bull capable of passing a semen test at 14 months of age. Any bull failing to be a satisfactory breeder will be replaced with a bull of equal value and quality, or a credit given towards purchase of another bull.

### *Insurance...*

Alameda Agencies, Bonnie Thompson 306-489-2258

### *Announcements...*

Errors in catalogue will be corrected by announcements from the block. Announcements will take precedence over any printed material.

### *Hotel Accommodations...*

#### **Microtel Inn & Suites...**

88 Grace St., Weyburn, SK  
(306) 842-5700

#### **Holiday Inn Express & Suites...**

4255 Albert St S. Regina, SK S4S 3R6  
(306) 789-5888



# Welcome to the sale from McCoy Cattle Co.

It is my pleasure to welcome you to our 17th annual bull sale. That is starting to add up in terms of number of years we have hosted this event in conjunction with our good friends and neighbours. I can assure you that numbers will continue to grow as don't think either of our families are about to exit the business or change what we are doing too dramatically in the near future. I can't overstate how fortunate we are to live where we live and do what we do and work with so many of you on a regular and long term basis. It is this relationship with our customer (and multiple levels of our families with our customer) that truly is the reason we get up and work hard at improving the product we are providing you day after day.

I have offered my kids and spouse the opportunity to write this welcome but once again I have no takers. The common response is "Dad, you always talk about CanFax, and markets, and cow numbers and we don't quite talk that way." Therefore, as I see Wade has made reference to the tremendous markets we are seeing of late I will talk about something else. I am going to focus a bit on family in my welcome this year.

This is the first welcome I have written as a grandfather so maybe it has given me a bit more perspective on the world (kinda doubt it). First of all, it is important to remember that both our outfits are family owned and managed much like most of you reading this will be. It is not without the hard work and sacrifices that previous generations had made that enable us to do what we do. I would like to take this time to thank my parents, Gary and Florence, as without them the seedstock operation and business that we have grown into would not have ever happened. We are truly grateful for all the blood, sweat, and tears you have put in over the decades in order to put us in this position. This is also a great time to thank my wife as without her we would not be able to get done what we do in a year. I am not sure why she puts up with me sometimes! It is an exciting time for us as our girls consider their interest in our business going forward. Keep posted for future developments on this front. And yes, I should mention that Tate James Scott (our first grandson) was born in March of 2025.

For the second year, all of our bulls are genomically tested in order to help you find the bulls that fit your goals best. We look forward to discussing our sale offering both on sale day or any time before then. Please call anytime as we truly love to discuss what bulls will fit best in different situations.

Please join us on February 25th to check out the brand new sale facility at Beck Farms and try to budget enough time to stick around for the fish fry and social afterwards.

Talk soon,

*Chad*

## The Nicholas Family

Box 479, Milestone, SK S0G 3L0  
Chad: 306-436-7300 - Carrie: 306-436-7425  
www.mccoycattle.com cnicholas@sasktel.net



Chad, Carrie, Megan and Kalla Nicholas; Emma, Tyson & Tate Scott



Tyson, Emma & Tate Scott



Gary and Florence



**McCoy Cattle Co.**

## Delivery...

Free delivery in the Prairie Provinces & to Paris, Ontario. For bulls going to the U.S. we will cover export test and deliver to border.

## Sight Unseen Purchase Program...

We encourage our customers to come view the bulls anytime before the sale, but if you can't our sight unseen program is another great option. No one knows these bulls better than we do. We are more than willing to discuss the bulls with you and find ones that would work for your breeding program. When we deliver the bull, you must be 100% satisfied with your purchase or we will load the bull up and bring him home - no questions asked.

## WATCH & BID ONLINE

### CAN'T MAKE THE SALE?

Watch, Bid & Buy Online

To view & bid visit [www.dlms.ca](http://www.dlms.ca), log-in with your username and password or sign-up for your free user account.

**BIDDERS** - click BUYER APPROVAL tab, select the sale you are interested in bidding at and click sign up.

For more information call:

Mark Shologan 780-699-5082 or Purebred Team 780-991-3025

DLMS  
[www.dlms.ca](http://www.dlms.ca)  
Direct Livestock Marketing Systems

CANADA'S ONLINE SEEDSTOCK SOURCE.

# Beck Farms & McCoy Cattle Co. 17<sup>th</sup> BULL SALE

WEDNESDAY, FEBRUARY 25, 2026 - 2:00PM *Beck Farms Sale Facility, Milestone, SK*

## OFFERING 122 BULLS

60 Charolais Two-Year-Olds  
10 Charolais Yearlings  
52 Hereford Yearlings  
27 Hereford x Gelbvieh Heifers

### *Sale Day Phone...*

Chad Nicholas	306-436-7300 (C)
Carrie Nicholas	306-436-7425 (C)
Wade Beck	306-436-7458 (C)
Mason Beck	639-440-7027 (C)
Kaden Beck	639-440-7774 (C)
Jamie O'Shea	519-477-1238 (C)
Larry Debenham	306-736-8780 (C)

### *Sale Staff...*

Auctioneer...	
Dan Skeels	403-783-1217 (C)

### *Ringside...*

Andrew Reeleader	403-848-1260 (C)
Nate Marin, <i>Bohrson Marketing</i>	306-869-7130 (C)



### *From Milestone...*

On east side of Milestone take Range Road 2192  
4 miles south.  
Watch for signs!

View the catalogue online at [www.mccoycattle.com](http://www.mccoycattle.com)



# Two Year Old bulls.

This year's group of two year olds features a very strong group of bulls that were hand picked in the fall of 2024 to sell in this year's sale. They were vaccinated and weighed on October 1. They were left on the cows until beginning of November 2024, gently wintered on a backgrounding ration. They were pastured from May 15 until October 25 this past summer. They have been fed a TMR ration this winter consisting of 70% silage, 15% grain, 9% lentil straw and 6% bull supplement. Our goal is to raise 2 year old bulls with bred in performance but managed in such a way that they remain sound and active breeders for years to come. Buy these bulls with confidence they could work in any of the best herds in the land. All two year olds were semen tested on December 5, 2025. Scrotal measurements in the catalog are from that day. They will be re-evaluated before delivery.

All Beck Farms bulls will have received two shots of Fusogard for foot rot before they are delivered.



## Beck's Frontline 439M

PMC888451 // BECK 439M // Mar 23, 2024 // Polled

LT LEDGER 0332 P  
DC/KCM MARKSMAN E1145 PET  
MS TRADEMARK S6112

SPARROWS BRAXTON 519C  
BECK'S JENNA 30J  
BECK'S JENNA 61A

LT BLUEGRASS 4017 P  
LT BRENDA 6120 PLD  
CJ TRADEMARK H45  
MS MIKEL P4162

WINN MANS SKAGGS 663X  
SPARROWS CASINA 121X  
SM ANCHOR Y124 P  
BECK'S JENNA 32W



Lot 1 | Agribition 2025



BECK 345L | Maternal Brother

BW	205 DW	CE	BW	WW	YW	MK
90	748	12.9	-3.4	57	103	24

What better way to start the offering then one that describes exactly what we are trying to raise. Frontline is one we find hard to fault. Starting from the ground up with a big, strong foot and exceptional structure. His immense dimension with impressive muscling and attractive front end make him one worth looking at. Boasting strong calving ease numbers and out of a Braxton daughter that simply does not miss, he is worth the drive to Milestone.

Frontline was Reerve Champion Yearling bull at Agribition making many friends in a very strong division.

His maternal sibling was our high seller in 2025 and was used in our heifer pen.

Retaining 1/4 semen interest.

Scrotal: 44 cm





## Lot 2 | Beck's Top Gun 442M

The full brother to Beck's Throttle 201K, that has made waves for Stepler Farms; Agribition 2024 Champion Charolais Bull, 2024 CN Beef Supreme Top 10, Manitoba Ag Ex Supreme Champion Bull. Most importantly Throttle has gone on to be an excellent breeding bull. Siring the high selling at Stepler's annual female this past fall at \$32000. We believe in this bull a lot and like many attributes about him better than his brother. So much so that he saw use in our own cowherd this past summer. Long spined, strong foot, maternal excellence. The list goes on and on, on this one. **Scrotal: 45 cm**



Full Brother | Beck's Throttle 201K

## 2 Beck's Top Gun 442M

PMC888456 // BECK 442M // Mar 24, 2024 // Polled

LT LEDGER 0332 P  
**DC/KCM MARKSMAN E1145 PET**  
MS TRADEMARK S6112

LT BLUEGRASS 4017 P  
LT BRENDA 6120 PLD  
CJC TRADEMARK H45  
MS MIKEL P4162

SPARROWS BRAXTON 519C  
**BECK'S JEZZY 55F**  
BECK'S JEZZY 70C

WINN MANS SKAGGS 663X  
SPARROWS CASINA 121X  
STEPPLER ORCH 103A  
BECK'S JEZZY 81X

BW	205 DW	CE	BW	WW	YW	MK
102	815	5.0	0.4	61	118	28

## 3 Beck's Net Worth 451M

PMC888515 // BECK 451M // Mar 28, 2024 // Polled

LT LEDGER 0332 P  
**DC/KCM MARKSMAN E1145 PET**  
MS TRADEMARK S6112

LT BLUEGRASS 4017 P  
LT BRENDA 6120 PLD  
CJC TRADEMARK H45  
MS MIKEL P4162

STEPPLER BY DESIGN 275F  
**BECK'S JEZZY 76J**  
BECK'S JEZZY 70C

SPARROWS HACIENDA 407B  
STEPPLER MISS 367C  
STEPPLER ORCH 103A  
BECK'S JEZZY 81X

BW	205 DW	CE	BW	WW	YW	MK
83	743	7.8	-1.1	61	118	24



## Lot 3 | Beck's Net Worth 451M

A really intriguing bull that saw use in our cowherd this past summer. This Marksman son out of a sister to Throttle's mother boasts an 83 lbs birthweight, good foot, proud character, excellent temperament and a thick haircoat. His mom hails from the Jezy cow family that continues to raise big time herdbulls, 450M will carry on that tradition. **Scrotal: 41 cm**





## Beck's Zoom 469M

PMC888600 // BECK 469M // Apr 04, 2024 // Polled

LT LEDGER 0332 P  
**DC/KCM MARKSMAN E1145 PET**  
MS TRADEMARK S6112

SPARROWS BRAXTON 519C  
**BECK'S KEY 23H**  
BECK'S KEY 65E

LT BLUEGRASS 4017 P  
LT BRENDA 6120 PLD  
CJC TRADEMARK H45  
MS MIKEL P4162

WINN MANS SKAGGS 663X  
SPARROWS CASINA 121X  
STEPPLER ORCH 103A  
BECK'S KEY 12B

BW	205 DW	CE	BW	WW	YW	MK
93	724	6.4	-0.3	55	107	24

A very powerful Marksman son out of a really nice Braxton daughter. Zoom is a fluent travelling, big hipped bull with an impressive phenotype. This guy is easy to find in the pen and will definitely be popular on sale day. **Scrotal: 41 cm**



Lot 4 | Beck's Zoom 469M



## Beck's Sterling 491M

PMC888820 // BECK 491M // Apr 20, 2024 // Polled

LT LEDGER 0332 P  
**DC/KCM MARKSMAN E1145 PET**  
MS TRADEMARK S6112

BECK'S CITATION 615D  
**BECK'S TEQUILA 46J**  
BECK'S TEQUILA 9D

LT BLUEGRASS 4017 P  
LT BRENDA 6120 PLD  
CJC TRADEMARK H45  
MS MIKEL P4162

BECK'S BOUNTY 206Z  
BECK'S GOLDEN GIRL 33B  
SPARROWS KINGSTON 139Y  
BECK'S TEQUILA 50B

BW	205 DW	CE	BW	WW	YW	MK
113	792	-1.3	2.5	66	117	23

Big performance dude here. 491M combines the hip and top of Marksman with the hair of Citation. The perfect combination to sire market topping calves. **Scrotal: 38 cm**



Lot 5 | Beck's Sterling 491M



## Beck's Focus 487M

PMC888814 // BECK 487M // Apr 17, 2024 // Polled

LT LEDGER 0332 P  
**DC/KCM MARKSMAN E1145 PET**  
MS TRADEMARK S6112

SPARROWS BRAXTON 519C  
**BECK'S HEARTBREAK 41H**  
BECK'S HEARTBREAK 3Y

LT BLUEGRASS 4017 P  
LT BRENDA 6120 PLD  
CJC TRADEMARK H45  
MS MIKEL P4162

WINN MANS SKAGGS 663X  
SPARROWS CASINA 121X  
SPARROWS ELDORADO 361L  
BECK'S HEARTBREAK 61W

BW	205 DW	CE	BW	WW	YW	MK
94	637	9.3	-2.0	49	98	19

We may sound like a broken record.... but the Marksman Braxton cross really works. 487M offers calving ease in a fault free package. Focus is big middled, heavy muscled, and strong footed. **Scrotal: 40 cm**



Lot 6 | Beck's Focus 487M





Lot 7 - Beck's Dynamic 468M

**7**  
Beck's **Dynamic 468M**  
PMC888599 // BECK 468M // Apr 3, 2024 // Scurred

LT LEDGER 0332 P  
**DC/KCM MARKSMAN E1145 PET**  
MS TRADEMARK S6112

LT AFFINITY 6221 PLD  
**BECK'S FANNY 62H**  
BECK'S FANNY 56F

LT BLUEGRASS 4017 P  
LT BRENDA 6120 PLD  
CJC TRADEMARK H45  
MS MIKEL P4162

LT RUSHMORE 8060 PLD  
LT ATHENA 1247  
SPARROWS BRAXTON 519C  
BECK'S FANNY 20Y

BW	205 DW	CE	BW	WW	YW	MK
97	769	10.5	-2.5	60	112	25

Lots of calving ease built into this guy. Super sound out of an Affinity daughter that always out produces herself. Dynamic is Long-Bodied, clean fronted, and well mannered.  
**Scrotal: 41 cm**



Lot 8 | Beck's Brooks 416M

**8**  
Beck's **Brooks 416M**  
PMC888407 // BECK 416M // Mar 16, 2024 // Polled

LT LEDGER 0332 P  
**DC/KCM MARKSMAN E1145 PET**  
MS TRADEMARK S6112

BECK'S CITATION 615D  
**BECK'S MIST 5J**  
BECK'S MIST 14G

LT BLUEGRASS 4017 P  
LT BRENDA 6120 PLD  
CJC TRADEMARK H45  
MS MIKEL P4162

BECK'S BOUNTY 206Z  
BECK'S GOLDEN GIRL 33B  
SPARROWS BRAXTON 519C  
BECK'S MIST 66C

BW	205 DW	CE	BW	WW	YW	MK
83	754	9.0	-2.3	61	111	22

Smooth made and easy moving. This guy will cover ground and calve like a dream. 83lbs birthweight. **Scrotal: 41 cm**



Beck Farms is proud to support the next generation of cattle producers with the purchase of 4H steers.

**9**  
Beck's **Aspect 486M**  
PMC888813 // BECK 486M // Apr 17, 2024 // Polled

LT LEDGER 0332 P  
**DC/KCM MARKSMAN E1145 PET**  
MS TRADEMARK S6112

BECK'S CITATION 615D  
**BECK'S JEZZY 7J**  
BECK'S JEZZY 33G

LT BLUEGRASS 4017 P  
LT BRENDA 6120 PLD  
CJC TRADEMARK H45  
MS MIKEL P4162

BECK'S BOUNTY 206Z  
BECK'S GOLDEN GIRL 33B  
SPARROWS BRAXTON 519C  
BECK'S JEZZY 56D

BW	205 DW	CE	BW	WW	YW	MK
85	774	8.8	-1.8	64	115	22

$\frac{3}{4}$  brother to lot 8 and cut from the same cloth. Super easy calving with added performance. **Scrotal: 38 cm**



## Marksman & Knox

Few bulls make a lasting impact on a program like Marksman has on ours. Stout, easy doing and sound are the best ways to describe Marksman and his progeny. There are several standout sons in this year's sale offering. Knox is a home raised Marksman son out of a Panama daughter selected to add on to the Marksman influence in our program. His sons are very similar in type to the Marksman's. Big top, big hipped meat machines.



DC/KCM Marksman E1145 PET

Reference  
SIRE

DC/KCM **Marksman** E1145 PET

PMC765933 // BECK 1145E // Feb 06, 2017 // Polled

LT BLUEGRASS 4017 P  
**LT LEDGER 0332 P**  
LT BRENDA 6120 PLD

CJC TRADEMARK H45  
**MS TRADEMARK S6112**  
MS MIKEL P4162

LT ASSERTION 1277P  
LT PEARL'S BREEZE 2236 P  
LT RIO BRAVO 3181 P  
LT BRENDA'S EASE 3055PLD

LHD ALI MARK T214  
CJC MS PERFECT F57  
LHD SUPREME H1140  
MS FERNMARK F679

CE	BW	WW	YW	MK
7.8	-0.7	72	123	23

Reference  
SIRE

Beck's **Knox** 2031H

PMC795461 // BECK 2031H // Jan 26, 2020 // Polled

LT LEDGER 0332 P  
**DC/KCM MARKSMAN E1145 PET**  
MS TRADEMARK S6112

SPARROWS PANAMA 826U  
**BECK'S HEARTBREAK 32Z**  
BECK'S HEARTBREAK 61R

LT BLUEGRASS 4017 P  
LT BRENDA 6120 PLD  
CJC TRADEMARK H45  
MS MIKEL P4162

LOPEZ  
SPARROWS DAISY MAY 67P  
BECK'S LINK 23J  
BECK'S HEARTBREAK 43M

CE	BW	WW	YW	MK
-7.5	5.2	71	96	19



Beck's Knox 2031H





Lot 10 | Beck's Forefront 493M

10

## Beck's Forefront 493M

Applied For // BECK 493M // Apr 22, 2024 // Polled



DC/KCM MARKSMAN E1145 PET  
**BECK'S KNOX 2031H**  
BECK'S HEARTBREAK 32Z

SPARROWS BRAXTON 519C  
**BECK'S KEILI 58G**  
BECK'S KEILI 77C

LT LEDGER 0332 P  
MS TRADEMARK S6112  
SPARROWS PANAMA 826U  
BECK'S HEARTBREAK 61R

WINN MANS SKAGGS 663X  
SPARROWS CASINA 121X  
BECK'S TITAN 818U  
BECK'S KEILI 19W

SIRE

DAM

BW	205 DW	CE	BW	WW	YW	MK
100	818	-0.4	2.6	53	92	31

Arguably the most attractive bull in the offering, forefront carries a presence that draws your attention. Sired by Knox. Knox was retained to carry on the Marksman line and being out of a Panama mother, he brings a different genetic twist. This guy is impressive. **Scrotal: 42 cm**



Lot 11 | Beck's Ration 436M

11

## Beck's Ration 436M

Applied For // BECK 436M // Mar 22, 2024 // Polled



DC/KCM MARKSMAN E1145 PET  
**BECK'S KNOX 2031H**  
BECK'S HEARTBREAK 32Z

BECK'S BOUNTY 206Z  
**BECK'S STARLIGHT 49J**  
BECK'S STARLIGHT 72Y

LT LEDGER 0332 P  
MS TRADEMARK S6112  
SPARROWS PANAMA 826U  
BECK'S HEARTBREAK 61R

SPARROWS ELDORADO 361L  
BECK'S DANCER 83X  
ROLLIN ACRES WILL 12W  
BECK'S STARLIGHT 22T

SIRE

DAM

BW	205 DW	CE	BW	WW	YW	MK
91	794	2.0	0.8	68	101	20

A moderate framed Knox son. His grandmother (72Y) is also the grandmother of Beck's Charm. 72Y produced until 14 years of age. **Scrotal: 41 cm**



12

## Beck's Exposure 484M

Applied For // BECK 484M // Apr 16, 2024 // Polled

DC/KCM MARKSMAN E1145 PET  
**BECK'S KNOX 2031H**  
BECK'S HEARTBREAK 32Z

SPARROWS BRAXTON 519C  
**BECK'S TASSEL 28H**  
BECK'S TASSEL 58E

LT LEDGER 0332 P  
MS TRADEMARK S6112  
SPARROWS PANAMA 826U  
BECK'S HEARTBREAK 61R

WINN MANS SKAGGS 663X  
SPARROWS CASINA 121X  
CEDARDALE BRILLIANCE 119B  
BECK'S TASSEL 29C

BW	205 DW	CE	BW	WW	YW	MK
112	854	0.5	2.1	69	106	24

Powerful individual here. Thick made, hairy and sound. This guy will sire market topping calves. **Scrotal: 42 cm**



Lot 12 | Beck's Exposure 484M

13

## Beck's Mode 441M

Applied For // BECK 441M // Mar 24, 2024 // Polled // Twin

DC/KCM MARKSMAN E1145 PET  
**BECK'S KNOX 2031H**  
BECK'S HEARTBREAK 32Z

BECK'S CITATION 615D  
**BECK'S TIANNA 12H**  
BECK'S TIANNA 20F

LT LEDGER 0332 P  
MS TRADEMARK S6112  
SPARROWS PANAMA 826U  
BECK'S HEARTBREAK 61R

BECK'S BOUNTY 206Z  
BECK'S GOLDEN GIRL 33B  
SPARROWS BRAXTON 519C  
BECK'S TIANNA 54C

BW	205 DW	CE	BW	WW	YW	MK
81	-	0.6	1.5	58	97	20

441M is a maternal brother to Beck's Hero who was popular a few sales back and sold to Desertland Cattle Co. in Alberta. **Scrotal: 41 cm**



Lot 13 | Beck's Mode 441M

14

## Beck's Talladega 496M

Applied For // BECK 496M // Apr 30, 2024 // Polled

DC/KCM MARKSMAN E1145 PET  
**BECK'S KNOX 2031H**  
BECK'S HEARTBREAK 32Z

STEPLER ORCH 103A  
**BECK'S OMEGA 54D**  
BECK'S OMEGA 11U

LT LEDGER 0332 P  
MS TRADEMARK S6112  
SPARROWS PANAMA 826U  
BECK'S HEARTBREAK 61R

SPARROWS SEMINOLE 927W  
STEPLER MISS 253U  
SPARROWS AUTHENTIC 6S  
BECK'S OMEGA 11N

BW	205 DW	CE	BW	WW	YW	MK
104	714	-12.5	5.7	48	98	17

This guy is one day away from being a May born. Out of a 9 year old Orch daughter that has a perfect set of feet under her. **Scrotal: 42 cm**



Lot 14 | Beck's Talladega 496M





Lot 15 | Beck's Tripp 475M

15  
STARS

## Beck's Tripp 475M

Applied For // BECK 475M // Apr 08, 2024 // Polled

DC/KCM MARKSMAN E1145 PET  
**BECK'S KNOX 2031H**  
BECK'S HEARTBREAK 32Z

SPARROWS BRAXTON 519C  
**BECK'S KEY 12G**  
BECK'S KEY 70E

LT LEDGER 0332 P  
MS TRADEMARK S6112  
SPARROWS PANAMA 826U  
BECK'S HEARTBREAK 61R

WINN MANS SKAGGS 663X  
SPARROWS CASINA 121X  
STEPLER ORCH 103A  
BECK'S RED KEY 137X

BW	205 DW	CE	BW	WW	YW	MK
105	749	-1.7	3.0	56	92	22

Knox was retained to carry on the Marksman lineage on our Braxton daughters. Looking at this guy I'd say it was a good choice. 475M gets the power and muscle from Knox and the hair from Braxton. **Scrotal: 41 cm**



16  
STARS

## Beck's Hustle 485M

Applied For // BECK 485M // Apr 17, 2024 // Polled

DC/KCM MARKSMAN E1145 PET  
**BECK'S KNOX 2031H**  
BECK'S HEARTBREAK 32Z

HIGH BLUFF CRAFTSMAN 112C  
**BECK'S MAUDE 50E**  
BECK'S MAUDE 2C

LT LEDGER 0332 P  
MS TRADEMARK S6112  
SPARROWS PANAMA 826U  
BECK'S HEARTBREAK 61R

SCR TRIUMPH 2135  
SOS GONNA GETCHA GOOD 128R  
SPARROWS HOMBRE 128Y  
BECK'S MAUDE 33A

BW	205 DW	CE	BW	WW	YW	MK
101	710	-0.3	2.4	60	100	20

Stylish and hairy. His mother is a proven herd bull producer and offers a different genetic twist. **Scrotal: 40 cm**



Lot 17 | Beck's Technical 456M

17  
STARS

## Beck's Technical 456M

Applied For // BECK 456M // Mar 30, 2024 // Polled

LT LEDGER 0332 P  
**DC/KCM MARKSMAN E1145 PET**  
MS TRADEMARK S6112

BECK'S CITATION 615D  
**BECK'S DISCO 68G**  
BECK'S DISCO 14D

LT BLUEGRASS 4017 P  
LT BRENDA 6120 PLD  
CJC TRADEMARK H45  
MS MIKEL P4162

BECK'S BOUNTY 206Z  
BECK'S GOLDEN GIRL 33B  
LT SUNDANCE 2251 PLD  
BECK'S DISCO 47B

BW	205 DW	CE	BW	WW	YW	MK
99	745	-2.1	1.9	65	1.3	16

Hairy with an extra shot of style. **Scrotal: 39 cm**



Reference  
SIRE



LT LEDGER 0332 P  
**SOS APEX PLD 139F**  
TMJF BERYLE 447B

SPARROWS BRAXTON 519C  
**BECK'S TEQUILA 69F**  
BECK'S TEQUILA 76C

## Beck's Thread 2176J

PMC814541 // BECK 2176J // Feb 9, 2021 // Polled

LT BLUEGRASS 4017 P  
LT BRENDA 6120 PLD  
MERIT ROUNDUP 9508W  
TMJF U-CALLED 198U

WINN MANS SKAGGS 663X  
SPARROWS CASINA 121X  
STEPPLER ORCH 103A  
BECK'S TEQUILA 36Z

CE	BW	WW	YW	MK	MTL
8.2	-0.4	73	145	28	65

Thread has made the transition from show bull to breeding bull look easy. After finishing in the top ten at the CN Beef Supreme competition at Agribition 2022, Thread has been busy doing double duty each year at Stepler Farms and Beck Farms each year. Thread progeny come easy, are stylish and hairy with a very sound structure. One of our top sire groups with standouts in both the two year old and yearling divisions.



Beck's Thread 2176J



Lot 18 | Beck's Millenium 494M

18  
SIRE

## Beck's Millenium 494M

PMC888825 // BECK 494M // Apr 25, 2024 // Polled

SOS APEX PLD 139F  
**BECK'S THREAD 2176J**  
BECK'S TEQUILA 69F

LAE CANADIANA 561C  
**BECK'S MISS 77F**  
STEPPLER MISS 162D

LT LEDGER 0332 P  
TMJF BERYLE 447B  
SPARROWS BRAXTON 519C  
BECK'S TEQUILA 76C

MERIT ROUNDUP 9508W  
POST MISS WANDA 241W  
SPARROWS MONACO 487B  
STEPPLER MISS MOXIE 162W

BW	205 DW	CE	BW	WW	YW	MK
101	743	3.6	-0.1	63	125	21

Big time herdbull here! Immense dimension, heavy muscled, super attractive head. So soft on the move, he reflects his sire in many ways. Out of Mason's best cow he is one to see.

**Scrotal: 42 cm**

CHAROLAIS TWO YEAR OLD BULLS // BECK FARMS





Lot 19 | Beck's Creed 490M

One of my favourites. Possesses the Thread style and hair. Mother is quickly becoming a top producer with an outcross pedigree. Maternal brother to the mother of lot 68.  
**Scrotal: 42 cm**

19

## Beck's Creed 490M

PMC888818 // BECK 490M // Apr 20, 2024 // Polled

SOS APEX PLD 139F  
**BECK'S THREAD 2176J**  
BECK'S TEQUILA 69F

LT LEDGER 0332 P  
TMJF BERYLE 447B  
SPARROWS BRAXTON 519C  
BECK'S TEQUILA 76C

SPARROWS PRESTON 862F  
**BECK'S DESIGNER 83J**  
BECK'S DESIGNER 49A

BHD STOUT X41  
SPARROWS BLANCHE 585W  
SM ANCHOR Y124 P  
MERIT DESIGNER 6230S

SIRE

DAM

BW	205 DW	CE	BW	WW	YW	MK
90	773	6.1	0.6	66	119	27

20

## Beck's Lonestar 476M

PMC888793 // BECK 476M // Apr 09, 2024 // Polled

SOS APEX PLD 139F  
**BECK'S THREAD 2176J**  
BECK'S TEQUILA 69F

LT LEDGER 0332 P  
TMJF BERYLE 447B  
SPARROWS BRAXTON 519C  
BECK'S TEQUILA 76C

SPARROWS BRAXTON 519C  
**BECK'S JAZZ 13H**  
BECK'S JAZZ 14F

WINN MANS SKAGGS 663X  
SPARROWS CASINA 121X  
BECK'S CITATION 615D  
BECK'S JAZZ 20D

SIRE

DAM

BW	205 DW	CE	BW	WW	YW	MK
94	688	10.1	-1.9	53	115	26



Lot 20 | Beck's Lonestar 476M

Extra hairy with a big hip and top with an extra shot of style. A set of steers sired by Lonestar would make the order buyers sit up and take notice. **Scrotal: 41 cm**



## Lot 21 | Beck's Balance 467M

Low birth with an extra shot of performance. This hairy dude was used in our commercial herd and as clean up for some purebred cows in 2025.  
**Scrotal: 41 cm**



21

### Beck's Balance 467M

PMC888598 // BECK 467M // Apr 03, 2024 // Polled

SOS APEX PLD 139F  
**BECK'S THREAD 2176J**  
BECK'S TEQUILA 69F

LT LEDGER 0332 P  
TMJF BERYLE 447B  
SPARROWS BRAXTON 519C  
BECK'S TEQUILA 76C

DC/KCM MARKSMAN E1145 PET  
**BECK'S MIST 65J**  
BECK'S MIST 36F

LT LEDGER 0332 P  
MS TRADEMARK S6112  
SPARROWS BRAXTON 519C  
BECK'S MIST 67C

SIRE

DAM

BW	205 DW	CE	BW	WW	YW	MK
91	796	8.6	-1.0	67	127	28

22

### Beck's Warcry 450M

MC888508 // BECK 450M // Mar 26, 2024 // Horned

SOS APEX PLD 139F  
**BECK'S THREAD 2176J**  
BECK'S TEQUILA 69F

LT LEDGER 0332 P  
TMJF BERYLE 447B  
SPARROWS BRAXTON 519C  
BECK'S TEQUILA 76C

SPARROWS PRESTON 862F  
**BECK'S DANCER 86J**  
BECK'S DANCER 80E

BHD STOUT X41  
SPARROWS BLANCHE 585W  
STEPPLER ORCH 103A  
BECK'S DANCER 54A

SIRE

DAM

BW	205 DW	CE	BW	WW	YW	MK
96	838	3.6	1.2	69	124	28

## Lot 22 | Beck's Warcry 450M

Big time performance with a moderate birthweight. His mom and grandma are two of my favourites for their impeccable foot structure. **Scrotal: 40 cm**



CHAROLAIS TWO YEAR OLD BULLS // BECK FARMS





Lot 23 | Beck's Modem 444M

**23**  
**Beck's Modem 444M**  
 Applied For // BECK 444M // Mar 25, 2024 // Polled

SOS APEX PLD 139F  
**BECK'S THREAD 2176J**  
 BECK'S TEQUILA 69F

BECK'S BOUNTY 206Z  
**BECK'S EVA 68H**  
 BECK'S EVA 196W

LT LEDGER 0332 P  
 TMJF BERYLE 447B  
 SPARROWS BRAXTON 519C  
 BECK'S TEQUILA 76C

SPARROWS ELDORADO 361L  
 BECK'S DANCER 83X  
 BECK'S RICKY BOBBY 10S  
 PLEASANT DAWN EVA 196H

BW	205 DW	CE	BW	WW	YW	MK
91	730	7.7	-1.1	64	121	24

Good looking with a 91 lbs birthweight. Thread has become our go to calving ease sire, while siring hairy calves with added performance.



Lot 24 | Beck's Tornado 492M

**24**  
**Beck's Tornado 492M**  
 PMC888823 // BECK 492M // Apr 21, 2024 // Polled

SOS APEX PLD 139F  
**BECK'S THREAD 2176J**  
 BECK'S TEQUILA 69F

LT AFFINITY 6221 PLD  
**BECK'S STARLIGHT 61H**  
 BECK'S STARLIGHT 5F

LT LEDGER 0332 P  
 TMJF BERYLE 447B  
 SPARROWS BRAXTON 519C  
 BECK'S TEQUILA 76C

LT RUSHMORE 8060 PLD  
 LT ATHENA 1247  
 SPARROWS KINGSTON 139Y  
 BECK'S STRLIGHT 75D

BW	205 DW	CE	BW	WW	YW	MK
93	788	9.9	-1.8	64	127	27

The Thread sire group is so consistent it is tough to write footnotes for them. 492M is just like the others moderate birth, good performance and a mother that consistently out does herself. **Scrotal: 40 cm**



**25**  
**Beck's Range 463M**  
 PMC888587 // BECK 463M // Apr 03, 2024 // Polled

SOS APEX PLD 139F  
**BECK'S THREAD 2176J**  
 BECK'S TEQUILA 69F

DC/KCM MARKSMAN E1145 PET  
**BECK'S FLAIR 34J**  
 BECK'S FLAIR 81E

LT LEDGER 0332 P  
 TMJF BERYLE 447B  
 SPARROWS BRAXTON 519C  
 BECK'S TEQUILA 76C

LT LEDGER 0332 P  
 MS TRADEMARK S6112  
 BECK'S PANAMA 444B  
 BECK'S FLAIR 343X

BW	205 DW	CE	BW	WW	YW	MK
100	746	3.2	1.4	66	125	24

Moderate framed Thread son out of a young Marksman cow. Most of our second calves are bred to Thread as he offers reliable calving ease. **Scrotal: 40 cm**



## Lot 26 | Beck's Holden 419M

Super stylish Thread son out of an old Blue Value daughter. Calving ease with an extra shot of hair.



26

### Beck's Holden 419M

PMC888411 // BECK 419M // Mar 17, 2024 // Polled

SOS APEX PLD 139F  
**BECK'S THREAD 2176J**  
BECK'S TEQUILA 69F

LT BLUE VALUE 7903 ET  
**BECK'S FANNY 8C**  
BECK'S FANNY 6A

LT LEDGER 0332 P  
TMJF BERYLE 447B  
SPARROWS BRAXTON 519C  
BECK'S TEQUILA 76C

LT BLUEGRASS 4017 P  
LT UNLIMITED MAID 7184 P  
SPARROWS HOMBRE 128Y  
BECK'S FANNY 20Y

SIRE

DAM

BW	205 DW	CE	BW	WW	YW	MK
91	698	9.0	-1.1	65	119	24

27

### Beck's Tripp 427M

MC888928 // BECK 427M // Mar 20, 2024 // Horned

SOS APEX PLD 139F  
**BECK'S THREAD 2176J**  
BECK'S TEQUILA 69F

BECK'S ACCLAIM 905G  
**BECK'S DISCO 9J**  
BECK'S DISCO 25G

LT LEDGER 0332 P  
TMJF BERYLE 447B  
SPARROWS BRAXTON 519C  
BECK'S TEQUILA 76C

SPARROWS BRAXTON 519C  
BECK'S SASSY 33E  
LT LEDGER 0332 P  
BECK'S DISCO 23E

SIRE

DAM

BW	205 DW	CE	BW	WW	YW	MK
73	756	15.3	-4.6	61	122	29

## Lot 27 | Beck's Tripp 427M

A really unique Thread son here! 73lbs birthweight with a truly impressive phenotype, being so attractive fronted, and very strong footed. Out of one of my favourite Acclaim daughters.

**Scrotal: 41 cm**

**Suitable for heifers.**



CHAROLAIS TWO YEAR OLD BULLS // BECK FARMS





Beck's Acclaim 905G

Reference  
SIRE



WINN MANS SKAGGS 663X  
**SPARROWS BRAXTON 519C**  
SPARROWS CASINA 121X

HIGH BLUFF CRAFTSMAN 112C  
**BECK'S SASSY 33E**  
BECK'S SASSY 24C

Beck's **Acclaim** 905G

PMC772986 // BECK 905G // Jan 15, 2019 // Polled

MD ALI TRADE U1059  
WINN MANS BEVERLY 663S  
WINN MANS LANZA 610S  
SPARROWS CASSINA 21U

SCR TRIUMPH 213S  
SOS GONNA GETCHA GOOD 128R  
LT BLUE VALUE 7903 ET  
BECK'S SASSY 13A

CE	BW	WW	YW	MK
8.4	-1.3	43	86	32

28



SPARROWS BRAXTON 519C  
**BECK'S ACCLAIM 905G**  
BECK'S SASSY 33E

LT AFFINITY 6221 PLD  
**BECK'S FLAIR 21H**  
BECK'S FLAIR 61D

Beck's **Stetson** 435M

MC888445 // BECK 435M // Mar 23, 2024 // Horned

WINN MANS SKAGGS 663X  
SPARROWS CASINA 121X  
HIGH BLUFF CRAFTSMAN 112C  
BECK'S SASSY 24C

LT RUSHMORE 8060 PLD  
LT ATHENA 1247  
STEPLER ORCH 103A  
BECK'S FLAIR 41Y

BW	205 DW	CE	BW	WW	YW	MK
83	702	10.4	-2.8	42	89	28

Really stout, soft individual. With a 83 lbs birthweight and the pedigree he has behind him this dude screams calving ease.  
**Scrotal: 41 cm**



Lot 28 | Beck's Stetson 435M

29



SPARROWS BRAXTON 519C  
**BECK'S ACCLAIM 905G**  
BECK'S SASSY 33E

BECK'S CITATION 615D  
**BECK'S TIANNA 65H**  
BECK'S TIANNA 53Y

Beck's **Reaper** 420M

MC920034 // BECK 420M // Mar 17, 2024 // Horned

WINN MANS SKAGGS 663X  
SPARROWS CASINA 121X  
HIGH BLUFF CRAFTSMAN 112C  
BECK'S SASSY 24C

BECK'S BOUNTY 206Z  
BECK'S GOLDEN GIRL 33B  
ROLLIN ACRES WILL 12W  
BECK'S TIANNA 35T

BW	205 DW	CE	BW	WW	YW	MK
89	786	5.1	-0.9	47	90	25

Fault free in his make up this Acclaim son with an 89 lbs birthweight. Out of a powerful Citation daughter that gets better with age. His maternal brother sold last year to Macavoy Charolais. **Scrotal: 40 cm**



Lot 29 | Beck's Reaper 420M



30

Beck's **Burst 449M**

PMC888510 // BECK 449M // Mar 26, 2024 // Polled

SPARROWS BRAXTON 519C  
**BECK'S ACCLAIM 905G**  
 BECK'S SASSY 33E

WINN MANS SKAGGS 663X  
 SPARROWS CASINA 121X  
 HIGH BLUFF CRAFTSMAN 112C  
 BECK'S SASSY 24C

DC/KCM MARKSMAN E1145 PET  
**BECK'S PINECONE 43H**  
 BECK'S PINECONE 51F

LT LEDGER 0332 P  
 MS TRADEMARK S6112  
 SPARROWS BRAXTON 519C  
 BECK'S PINECONE 15A

BW	205 DW	CE	BW	WW	YW	MK
86	731	11.5	-2.7	50	96	28

Burst is a moderate framed, heavy haired, big topped Acclaim son. With an 86LB birthweight, he will calve easy and have big calves come weaning time. **Scrotal: 38 cm**



Lot 30 | Beck's Burst 449M

31

Beck's **Flint 426M**

PMC888422 // BECK 426M // Mar 18, 2024 // Polled

SPARROWS BRAXTON 519C  
**BECK'S ACCLAIM 905G**  
 BECK'S SASSY 33E

WINN MANS SKAGGS 663X  
 SPARROWS CASINA 121X  
 HIGH BLUFF CRAFTSMAN 112C  
 BECK'S SASSY 24C

STEPPLER BY DESIGN 275F  
**BECK'S TASSEL 89H**  
 BECK'S TASSEL 49D

SPARROWS HACIENDA 407B  
 STEPPLER MISS 367C  
 STEPPLER ORCH 103A  
 BECK'S TASSEL 26X

BW	205 DW	CE	BW	WW	YW	MK
89	728	4.7	0.2	49	99	25

Moderate framed and hairy. 89 lbs birthweight this guy will give you calving ease and his calves will command a premium. **Scrotal: 41 cm**



Lot 31 | Beck's Flint 426M

32

Beck's **Sensor 460M**

PMC888579 // BECK 460M // Mar 31, 2024 // Polled

SPARROWS BRAXTON 519C  
**BECK'S ACCLAIM 905G**  
 BECK'S SASSY 33E

WINN MANS SKAGGS 663X  
 SPARROWS CASINA 121X  
 HIGH BLUFF CRAFTSMAN 112C  
 BECK'S SASSY 24C

DC/KCM MARKSMAN E1145 PET  
**BECK'S FLAIR 48H**  
 BECK'S FLAIR 81E

LT LEDGER 0332 P  
 MS TRADEMARK S6112  
 BECK'S PANAMA 444B  
 BECK'S FLAIR 343X

BW	205 DW	CE	BW	WW	YW	MK
94	737	6.8	-0.5	52	96	26

Rugged made Acclaim son. Just like Marksman on the Braxton daughters has been a magical cross, using Acclaim (Braxton son) on our Marksman daughters has given us the same results. 460M is a prime example of that. **Scrotal: 41 cm**



Lot 32 | Beck's Sensor 460M





Lot 33 | Beck's Image 479M

**33**  
**Beck's Image 479M**  
 MC888798 // BECK 479M // Apr 10, 2024 // Horned

SPARROWS BRAXTON 519C  
**BECK'S ACCLAIM 905G**  
 BECK'S SASSY 33E

LT LEDGER 0332 P  
**BECK'S NADINE 41J**  
 BECK'S NADINE 39G

WINN MANS SKAGGS 663X  
 SPARROWS CASINA 121X  
 HIGH BLUFF CRAFTSMAN 112C  
 BECK'S SASSY 24C

LT BLUEGRASS 4017 P  
 LT BRENDA 6120 PLD  
 SPARROWS BRAXTON 519C  
 BECK'S NADINE 5C

BW	205 DW	CE	BW	WW	YW	MK
82	732	14.7	-4.2	49	94	27

Image is a really long bodied Acclaim son, that we really appreciate for depth of body and foot quality, along with boasting an 82lbs birthweight, big time calving ease option here. **Scrotal: 40 cm**



Lot 34 | Beck's Cobra 465M

**34**  
**Beck's Cobra 465M**  
 MC888927 // BECK 465M // Apr 08, 2024 // Horned

SPARROWS BRAXTON 519C  
**BECK'S ACCLAIM 905G**  
 BECK'S SASSY 33E

LT AFFINITY 6221 PLD  
**BECK'S TASSEL 6J**  
 BECK'S TASSEL 29G

WINN MANS SKAGGS 663X  
 SPARROWS CASINA 121X  
 HIGH BLUFF CRAFTSMAN 112C  
 BECK'S SASSY 24C

LT RUSHMORE 8060 PLD  
 LT ATHENA 1247  
 SPARROWS BRAXTON 519C  
 BECK'S TASSEL 333X

BW	205 DW	CE	BW	WW	YW	MK
92	730	10.2	-2.5	46	91	30

465M is another typical Acclaim son. Moderate birth, rugged made with a good hair coat. We used Acclaim on lots of our Affinity daughters to add hair and substance. Here's a prime example how it works. **Scrotal: 40 cm**



Lot 35 | Beck's Renegade 462M

**35**  
**Beck's Renegade 462M**  
 PMC917816 // BECK 462M // Apr 03, 2024 // Polled

SPARROWS BRAXTON 519C  
**BECK'S ACCLAIM 905G**  
 BECK'S SASSY 33E

BECK'S ORCH 509C  
**BECK'S MAUDE 93F**  
 BECK'S MAUDE 2C

WINN MANS SKAGGS 663X  
 SPARROWS CASINA 121X  
 HIGH BLUFF CRAFTSMAN 112C  
 BECK'S SASSY 24C

STEPPLER ORCH 103A  
 BECK'S MISS RED KEY 28Y  
 SPARROWS HOMBRE 128Y  
 BECK'S MAUDE 33A

BW	205 DW	CE	BW	WW	YW	MK
84	709	3.4	0.5	54	103	23

An Acclaim son with a lot of stretch and eye appeal and a great hair coat. Mom is a super sound brood cow with a great foot. **Scrotal: 38 cm**



Reference  
SIRE



## Sparrows Connelly 154J

PMC822985 // SB 154J // Feb 16, 2021 // Polled

SPARROWS CASINO 511C  
**PRO-CHAR JAMIESON 68F**  
PRO-CHAR CASTINE 12C

SPARROWS LIRIANO 660D  
**SPARROWS SPLENDOR 35F**  
SPARROWS SPLENDOR 35A

LT BLUE VALUE 7903 ET  
SPARROWS CASINA 121A  
SPARROWS KINGSTON 139Y  
CST MS CASTINE 10R

WINN MANS SKAGGS 663X  
SPARROWS SYMPHONY 130Z  
SPARROWS ELDORADO 361L  
SPARROWS SPLENDOR 35Y

CE	BW	WW	YW	MK
-5.0	3.0	58	120	30

Connelly was found by Mason at the 2022 CK Sparrow Farms Bull Sale where he was the high seller. Style, added curly hair and super sound foot structure are some Connelly's strongest attributes and are passed along to his progeny. With the strength and longevity of the cow family behind him, the best is yet to come for Connelly.



Sparrows Connelly 154J

36



## Beck's Dagger 474M

PMC888617 // BECK 474M // Apr 08, 2024 // Polled

PRO-CHAR JAMIESON 68F  
**SPARROWS CONNELLY 154J**  
SPARROWS SPLENDOR 35F

SPARROWS BRAXTON 519C  
**BECK'S EVA 39H**  
BECK'S EVA 13D

SPARROWS CASINO 511C  
PRO-CHAR CASTINE 12C  
SPARROWS LIRIANO 660D  
SPARROWS SPLENDOR 35A

WINN MANS SKAGGS 663X  
SPARROWS CASINA 121X  
BECK'S BOUNTY 206Z  
BECK'S EVA 30B

BW	205 DW	CE	BW	WW	YW	MK
106	774	-0.7	1.8	58	115	29

Big framed Connelly son that catches my eye everytime I walk in the pen. Mother has become a consistent producer and is a full sister to Beck's Innovation who sold to C2 Charolais.

**Scrotal: 39 cm**



Lot 36 | Beck's Dagger 474M

37



## Beck's Guage 418M

MC888410 // BECK 418M // Mar 16, 2024 // Horned // Twin

PRO-CHAR JAMIESON 68F  
**SPARROWS CONNELLY 154J**  
SPARROWS SPLENDOR 35F

SPARROWS BRAXTON 519C  
**BECK'S TIANNA 59E**  
BECK'S TIANNA 53Y

SPARROWS CASINO 511C  
PRO-CHAR CASTINE 12C  
SPARROWS LIRIANO 660D  
SPARROWS SPLENDOR 35A

WINN MANS SKAGGS 663X  
SPARROWS CASINA 121X  
ROLLIN ACRES WILL 12W  
BECK'S TIANNA 35T

BW	205 DW	CE	BW	WW	YW	MK
86	790	-0.7	2.0	52	106	27

Rugged made, sound, hairy Connelly son. Mother is a super sound footed Braxton daughter from a cow family that is known for their longevity around here. **Scrotal: 38 cm**



Lot 37 | Beck's Guage 418M





Lot 38 | Beck's Shutter 472M

38

## Beck's Shutter 472M

MC888614 // BECK 472M // Apr 07, 2024 // Horned

PRO-CHAR JAMIESON 68F  
**SPARROWS CONNELLY 154J**  
SPARROWS SPLENDOR 35F

SPARROWS CASINO 511C  
PRO-CHAR CASTINE 12C  
SPARROWS LIRIANO 660D  
SPARROWS SPLENDOR 35A

SPARROWS BRAXTON 519C  
**BECK'S OMEGA 38F**  
BECK'S OMEGA 9C

WINN MANS SKAGGS 663X  
SPARROWS CASINA 121X  
STEPLER ORCH 103A  
BECK'S OMEGA 311X

BW	205 DW	CE	BW	WW	YW	MK
91	792	1.7	1.0	53	110	30

Just like lot 37, rugged made, sound hairy Connelly son. Being they are  $\frac{3}{4}$  we wouldn't expect them no to be alike.

Scrotal: 37 cm

39

## Beck's Duration 459M

PMC888577 // BECK 459M // Mar 30, 2024 // Polled

PRO-CHAR JAMIESON 68F  
**SPARROWS CONNELLY 154J**  
SPARROWS SPLENDOR 35F

SPARROWS CASINO 511C  
PRO-CHAR CASTINE 12C  
SPARROWS LIRIANO 660D  
SPARROWS SPLENDOR 35A

LT AFFINITY 6221 PLD  
**BECK'S POSH 12J**  
BECK'S POSH 70G

LT RUSHMORE 8060 PLD  
LT ATHENA 1247  
SPARROWS BRAXTON 519C  
BECK'S POSH 48C

BW	205 DW	CE	BW	WW	YW	MK
85	706	8.9	-2.3	47	100	28

85 lbs birthweight this guy offers calving ease in a moderate frame and stout package. Scrotal: 38 cm

40

## Beck's Fare 453M

PMC888521 // BECK 453M // Mar 29, 2024 // Polled

PRO-CHAR JAMIESON 68F  
**SPARROWS CONNELLY 154J**  
SPARROWS SPLENDOR 35F

SPARROWS CASINO 511C  
PRO-CHAR CASTINE 12C  
SPARROWS LIRIANO 660D  
SPARROWS SPLENDOR 35A

SPARROWS BRAXTON 519C  
**BECK'S PINECONE 1G**  
BECK'S PINECONE 5E

WINN MANS SKAGGS 663X  
SPARROWS CASINA 121X  
SPARROWS KINGSTON 139Y  
BECK'S PINECONE 20C

BW	205 DW	CE	BW	WW	YW	MK
98	725	6.0	-1.0	46	100	29

Free moving Connelly son. This guy will travel your pastures with ease and remain sound for years. Scrotal: 38 cm



Lot 41 | Beck's Ridge 489M

41

## Beck's Ridge 489M

PMC888817 // BECK 489M // Apr 19, 2024 // Polled

PRO-CHAR JAMIESON 68F  
**SPARROWS CONNELLY 154J**  
SPARROWS SPLENDOR 35F

SPARROWS CASINO 511C  
PRO-CHAR CASTINE 12C  
SPARROWS LIRIANO 660D  
SPARROWS SPLENDOR 35A

DC/KCM MARKSMAN E1145 PET  
**BECK'S DISCO 51H**  
BECK'S DISCO 30E

LT LEDGER 0332 P  
MS TRADEMARK S6112  
SPARROWS BRAXTON 519C  
BECK'S DISCO 47B

BW	205 DW	CE	BW	WW	YW	MK
112	768	-3.7	3.2	62	119	27

489M is out of a big stout made Marksman daughter that is easy to find in the pasture and always brings in a big calf in the fall. He is built like his mother, big, stout and hairy and will sire calves that top the market. Scrotal: 39 cm



42



## Beck's Bracket 452M

MC888519 // BECK 452M // Mar 29, 2024 // Polled

PRO-CHAR JAMIESON 68F  
**SPARROWS CONNELLY 154J**  
 SPARROWS SPLENDOR 35F

SPARROWS BRAXTON 519C  
**BECK'S MIST 8H**  
 BECK'S MIST 25F

SPARROWS CASINO 511C  
 PRO-CHAR CASTINE 12C  
 SPARROWS LIRIANO 660D  
 SPARROWS SPLENDOR 35A

WINN MANS SKAGGS 663X  
 SPARROWS CASINA 121X  
 BECK'S CITATION 615D  
 BECK'S MIST 23D

BW	205 DW	CE	BW	WW	YW	MK
92	719	5.0	-0.7	51	107	28

A stout, very complete Connelly son that we really appreciate for his heavy muscling, free moving, heavy muscled frame.

**Scrotal: 41 cm**



Lot 42 | Beck's Bracket 452M

43



## Beck's Climb 499M

PMC888837 // BECK 499M // May 06, 2024 // Polled

PRO-CHAR JAMIESON 68F  
**SPARROWS CONNELLY 154J**  
 SPARROWS SPLENDOR 35F

SPARROWS BRAXTON 519C  
**BECK'S GOLDEN GIRL 35G**  
 BECK'S GOLDEN GIRL 35C

SPARROWS CASINO 511C  
 PRO-CHAR CASTINE 12C  
 SPARROWS LIRIANO 660D  
 SPARROWS SPLENDOR 35A

WINN MANS SKAGGS 663X  
 SPARROWS CASINA 121X  
 SPARROWS HOMBRE 128Y  
 LAE GOLDEN GIRL 8136U

BW	205 DW	CE	BW	WW	YW	MK
99	720	0.4	1.3	52	106	28

The youngest two year old in the offering. This guy is super sound being out of a cow family that is known around our place for their superior foot structure. **Scrotal: 38 cm**



Lot 43 | Beck's Climb 499M



Wade was honoured to judge the Mexican National Charolais show in April of 2025





Lot 44 | Beck's El Chapo 407M

An Honor son out of an Affinity daughter. This guys pedigree screams calving ease. Used as clean up on a group of our heifers last summer.

**Scrotal: 41 cm**

**Suitable for heifers.**

44

## Beck's El Chapo 407M

PMC888391 // BECK 407M // Feb 29, 2024 // Polled

RBM KINGSBURY D28  
**BECK'S HONOR 888F**  
BECK'S TASSEL 34C

WCR KINGSBURY 116P  
RBM TROJAN Z33  
STEPPLER ORCH 103A  
BECK'S TASSEL 4R

LT AFFINITY 6221 PLD  
**BECK'S MIST 6K**  
BECK'S MIST 8H

LT RUSHMORE 8060 PLD  
LT ATHENA 1247  
SPARROWS BRAXTON 519C  
BECK'S MIST 25F

SIRE

DAM

BW	205 DW	CE	BW	WW	YW	MK
76	749	12.3	-4.8	49	99	22

45

## Beck's Poker 405M

PMC888383 // BECK 405M // Feb 27, 2024 // Polled

RBM KINGSBURY D28  
**BECK'S HONOR 888F**  
BECK'S TASSEL 34C

WCR KINGSBURY 116P  
RBM TROJAN Z33  
STEPPLER ORCH 103A  
BECK'S TASSEL 4R

LT AFFINITY 6221 PLD  
**BECK'S DISCO 18K**  
BECK'S DISCO 51H

LT RUSHMORE 8060 PLD  
LT ATHENA 1247  
DC/KCM MARKSMAN E1145 PET  
BECK'S DISCO 30E

SIRE

DAM

BW	205 DW	CE	BW	WW	YW	MK
90	736	6.6	-1.4	52	103	20



Lot 45 | Beck's Poker 405M

Really eye appealing Honor son. Calving ease assured.

**Scrotal: 40 cm**





Beck's Impact 269K

## Beck's Innovation & Impact

This father son team have both been high sellers in previous sales. Innovation selling to C2 Charolais in Manitoba in 2020 and Impact to Buffalo Lake Charolais in 2024. We have used Innovation through AI for years and had the foresight to run Impact with a group of heifers as a yearling before selling in our sale as a two year old. Both bulls are easy doing and rugged made with exceptional calving ease. Impact sons made an impact in the Buffalo Lake bull sale in December where 10 sons all out of first calf heifers averaged \$14850. An Innovation two year old raised one of our feature yearlings in this year's offering as well.

Reference  
SIRE

SPARROWS BRAXTON 519C  
**BECK'S INNOVATION 939G**  
BECK'S EVA 13D

LT LEDGER 0332 P  
**BECK'S DISCO 25G**  
BECK'S DISCO 23E

Beck's **Impact** 269K

PMC871950 // BECK 269K // Feb 03, 2022 // Polled

WINN MANS SKAGGS 663X  
SPARROWS CASINA 121X  
BECK'S BOUNTY 206Z  
BECK'S EVA 30B

LT BLUEGRASS 4017 P  
LT BRENDA 6120 PLD  
SPARROWS BRAXTON 519C  
BECK'S DISCO 20Z

CE	BW	WW	YW	MK
12.5	-4.1	59	123	32



Beck's Innovation 939G

46

BECK'S INNOVATION 939G  
**BECK'S IMPACT 269K**  
BECK'S DISCO 25G

BECK'S LEGACY 552C  
**BECK'S MISS 70K**  
STEPPLER MISS 162D

Beck's **Duke** 425M

PMC888421 // BECK 425M // Mar 18, 2024 // Polled

SPARROWS BRAXTON 519C  
BECK'S EVA 13D  
LT LEDGER 0332 P  
BECK'S DISCO 23E

BECK'S TITAN 818U  
BECK'S EVA 196W  
SPARROWS MONACO 487B  
STEPPLER MISS MOXIE 162W

BW	205 DW	CE	BW	WW	YW	MK
86	798	5.7	-0.5	63	117	28

A big middled low birthweight Impact son out of one of our last Legacy daughters. 86lbs birthweight, strong performance, excellent foot, out of a good young cow. Same cow family as lot 18. **Scrotal: 41 cm**



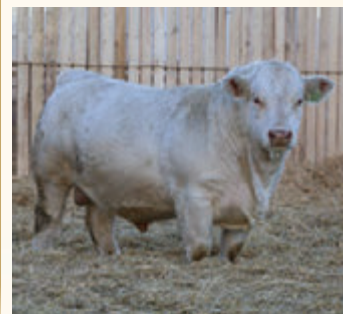
Lot 46 | Beck's Duke 425M





Lot 47 | Beck's Cash 414M

One of our Impact sons to sell this year, Cash is the total package, being so complete, big hiped, and boasting a 78lb birthweight, big time calving ease pedigree here that will allow you to sleep easy. **Scrotal: 42 cm**



47

## Beck's Cash 414M

PMC888402 // BECK 414M // Mar 13, 2024 // Polled

BECK'S INNOVATION 939G  
**BECK'S IMPACT 269K**  
BECK'S DISCO 25G

SPARROWS BRAXTON 519C  
BECK'S EVA 13D  
LT LEDGER 0332 P  
BECK'S DISCO 23E

BECK'S HONOR 888F  
**BECK'S DISCO 76K**  
BECK'S DISCO 68G

RBM KINGSBURY D28  
BECK'S TASSEL 34C  
BECK'S CITATION 615D  
BECK'S DISCO 14D

SIRE

DAM

BW	205 DW	CE	BW	WW	YW	MK
78	677	7.8	-2.6	52	108	22

48

## Beck's Lawless 497M

PMC888832 // BECK 497M // May 01, 2024 // Polled

BECK'S INNOVATION 939G  
**BECK'S IMPACT 269K**  
BECK'S DISCO 25G

SPARROWS BRAXTON 519C  
BECK'S EVA 13D  
LT LEDGER 0332 P  
BECK'S DISCO 23E

DC/KCM MARKSMAN E1145 PET  
**BECK'S DISCO 9H**  
BECK'S DISCO 29F

LT LEDGER 0332 P  
MS TRADEMARK S6112  
SPARROWS BRAXTON 519C  
BECK'S DISCO 8Z

SIRE

DAM

BW	205 DW	CE	BW	WW	YW	MK
86	719	10.2	-3.4	56	113	27



Lot 48 | Beck's Lawless 497M

Super stout and soggy Impact son out of a Marksman daughter. This guy will have no problem maintaining his condition in any situation. As Lyle Bignell says about the Impact bull, "I could keep him in a gravel pit and he'd still stay in shape". **Scrotal: 42 cm**



49

Beck's **Versace 428M**

PMC888929 // BECK 428M // Mar 20, 2024 // Polled

BECK'S INNOVATION 939G  
**BECK'S IMPACT 269K**  
 BECK'S DISCO 25G

SPARROWS BRAXTON 519C  
 BECK'S EVA 13D  
 LT LEDGER 0332 P  
 BECK'S DISCO 23E

BECK'S LEGACY 552C  
**BECK'S MIST 60K**  
 BECK'S MIST 23D

BECK'S TITAN 818U  
 BECK'S EVA 196W  
 LT SUNDANCE 2251 PLD  
 BECK'S MIST 44A

BW	205 DW	CE	BW	WW	YW	MK
82	720	3.8	0.5	61	116	27

Bigger framed Impact son. Calving ease from Impact with the added performance from his mother's side makes him one not to overlook. **Scrotal: 40 cm**



Lot 49 | Beck's Versace 428M

50

Beck's **Gunner 413M**

PMC888400 // BECK 413M // Mar 12, 2024 // Polled

BECK'S INNOVATION 939G  
**BECK'S IMPACT 269K**  
 BECK'S DISCO 25G

SPARROWS BRAXTON 519C  
 BECK'S EVA 13D  
 LT LEDGER 0332 P  
 BECK'S DISCO 23E

DC/CJC FAIR PLAY F1042 P  
**BECK'S FANNY 54K**  
 BECK'S FANNY 24G

BHD COBALTOCENE C330 P  
 CJC MS REDDIRT B512  
 SPARROWS BRAXTON 519C  
 BECK'S FANNY 56E

BW	205 DW	CE	BW	WW	YW	MK
89	708	7.5	0.0	59	120	23

An extra shot of hair and growth in this Impact son.  
**Scrotal: 39 cm**



Lot 50 | Beck's Gunner 413M

51

Beck's **Stronghold 409M**

PMC888394 // BECK 409M // Mar 02, 2024 // Polled

SPARROWS BRAXTON 519C  
**BECK'S INNOVATION 939G**  
 BECK'S EVA 13D

WINN MANS SKAGGS 663X  
 SPARROWS CASINA 121X  
 BECK'S BOUNTY 206Z  
 BECK'S EVA 30B

DC/KCM MARKSMAN E1145 PET  
**BECK'S KEY 57K**  
 BECK'S KEY 28E

LT LEDGER 0332 P  
 MS TRADEMARK S6112  
 SPARROWS KINGSTON 139Y  
 BECK'S MISS RED KEY 28Y

BW	205 DW	CE	BW	WW	YW	MK
86	746	6.5	-1.5	54	102	23

The only Innovation son in the offering. Bigger framed and attractive out a nice Marksman two year old. **Scrotal: 39 cm**



Lot 51 | Beck's Stronghold 409M





Lot 52 | Beck's Dragon 434M

**52**  
**Beck's Dragon 434M**  
 PMC917810 // BECK 434M // Mar 22, 2024 // Polled

BECK'S BOUNTY 206Z	SPARROWS ELDORADO 361L
<b>BECK'S DODGE 859F</b>	BECK'S DANCER 83X
BECK'S CHARISMA 6D	SPARROWS KINGSTON 139Y
	BECK'S CHARISMA 15B
BECK'S CHARM 867F	BECK'S BOUNTY 206Z
<b>BECK'S DISCO 44K</b>	BECK'S STARLIGHT 35D
BECK'S DISCO 23E	SPARROWS BRAXTON 519C
	BECK'S DISCO 20Z

BW	205 DW	CE	BW	WW	YW	MK
82	769	6.1	-1.6	58	98	18

You can see the Charm influence in this guy coming through from his mother. Bigger framed and hairy with a 82 lbs make this guy one to look for sale day. **Scrotal: 41 cm**



Lot 53 | Beck's Bridge 470M

**53**  
**Beck's Bridge 470M**  
 PMC917821 // BECK 470M // Apr 06, 2024 // Polled

BECK'S BOUNTY 206Z	SPARROWS ELDORADO 361L
<b>BECK'S DODGE 859F</b>	BECK'S DANCER 83X
BECK'S CHARISMA 6D	SPARROWS KINGSTON 139Y
	BECK'S CHARISMA 15B
DC/KCM MARKSMAN E1145 PET	LT LEDGER 0332 P
<b>BECK'S DESIGNER 2K</b>	MS TRADEMARK S6112
BECK'S DESIGNER 31D	SPARROWS KINGSTON 139Y
	BECK'S DESIGNER 58Y

BW	205 DW	CE	BW	WW	YW	MK
92	761	8.6	-2.7	51	88	16

Moderate framed, easy doing Dodge son out of a really nice made Marksman two year old. **Scrotal: 39 cm**



Lot 54 | Beck's Guinness 430M

**54**  
**Beck's Guinness 430M**  
 PMC917809 // BECK 430M // Mar 21, 2024 // Polled

BECK'S BOUNTY 206Z	SPARROWS ELDORADO 361L
<b>BECK'S DODGE 859F</b>	BECK'S DANCER 83X
BECK'S CHARISMA 6D	SPARROWS KINGSTON 139Y
	BECK'S CHARISMA 15B
BECK'S CHARM 867F	BECK'S BOUNTY 206Z
<b>BECK'S STARLIGHT 3K</b>	BECK'S STARLIGHT 35D
BECK'S STARLIGHT 81G	SPARROWS BRAXTON 519C
	BECK'S STARLIGHT 25B

BW	205 DW	CE	BW	WW	YW	MK
83	71	6.9	-1.9	56	92	18

Moderate framed and stout with an extra shot of hair. **Scrotal: 40 cm**



55

## Beck's Sullivan 423M

PMC917808 // BECK 423M // Mar 18, 2024 // Polled

LT RUSHMORE 8060 PLD  
**LT AFFINITY 6221 PLD**  
 LT ATHENA 1247

BECK'S HONOR 888F  
**BECK'S TASSEL 106K**  
 BECK'S TASSEL 21A

LT RIO BRAVO 3181 P  
 LT BRENDA'S EASE 3055PLD  
 WINN MANS LANZA 610S  
 LT SILVER ATHENA 7123 P

RBM KINGSBURY D28  
 BECK'S TASSEL 34C  
 SPARROWS PANAMA 826U  
 CHARDEL TASSEL 333N

BW	205 DW	CE	BW	WW	YW	MK
79	726	7.9	-2.5	53	108	23

An Affinity son out of an Honor daughter. Moderate framed complete made individual that exudes calving ease.

**Scrotal: 39 cm**

**Suitable for heifers.**



Lot 55 | Beck's Sullivan 423M

56

## Beck's Apprentice 412M

PMC917831 // BECK 412M // Mar 09, 2024 // Polled

BECK'S BOUNTY 206Z  
**BECK'S DODGE 859F**  
 BECK'S CHARISMA 6D

BECK'S HONOR 888F  
**BECK'S TASSEL 108K**  
 BECK'S TASSEL 27D

SPARROWS ELDORADO 361L  
 BECK'S DANCER 83X  
 SPARROWS KINGSTON 139Y  
 BECK'S CHARISMA 15B

RBM KINGSBURY D28  
 BECK'S TASSEL 34C  
 SPARROWS KINGSTON 139Y  
 BECK'S TASSEL 6Z

BW	205 DW	CE	BW	WW	YW	MK
59	695	7.5	-3.1	47	84	12

Super easy calving guy here. I am sure to get lots of questions on the birth weight. My only answer is that is what the scale read. No different than the bulls in the sale that are 113.

Calving ease and vigour is more important around here than a number on the scale. **Scrotal: 41 cm**

**Suitable for heifers.**



Lot 56 | Beck's Apprentice 412M

57

## Beck's Rockstar 402M

PMC887489 // BECK 402M // Feb 19, 2024 // Polled

LT RUSHMORE 8060 PLD  
**LT AFFINITY 6221 PLD**  
 LT ATHENA 1247

BECK'S LEGACY 552C  
**BECK'S DISCO 32K**  
 BECK'S DISCO 14E

LT RIO BRAVO 3181 P  
 LT BRENDA'S EASE 3055PLD  
 WINN MANS LANZA 610S  
 LT SILVER ATHENA 7123 P

BECK'S TITAN 818U  
 BECK'S EVA 196W  
 SPARROWS KINGSTON 139Y  
 BECK'S DISCO 78C

BW	205 DW	CE	BW	WW	YW	MK
66	745	12.3	-3.7	51	99	28

Bigger framed easy moving herd bull here.

**Scrotal: 39 cm**



Congratulations to Morgan Debenham who won rate of gain at the Whitewood Regional show with a Beck sired steer. Morgan's steer had a sale weight of 1610 lbs with 4.28 ADG.





Lot 58 | Beck's Diablo 410M

58

## Beck's Diablo 410M

MC888395 // BECK 410M // Mar 03, 2024 // Horned

LT RUSHMORE 8060 PLD  
**LT AFFINITY 6221 PLD**  
LT ATHENA 1247

LT RIO BRAVO 3181 P  
LT BRENDA'S EASE 3055PLD  
WINN MANS LANZA 610S  
LT SILVER ATHENA 7123 P

BECK'S CHARM 867F  
**BECK'S INTRIGUE 66K**  
BECK'S INTRIGUE 45C

BECK'S BOUNTY 206Z  
BECK'S STARLIGHT 35D  
STEPPLER ORCH 103A  
BECK'S INTRIGUE 102X

BW	205 DW	CE	BW	WW	YW	MK
68	700	9.5	-2.4	56	110	25

Big power rugged bull that catches your eye when you walk in the pen. 68 lbs birthweight suggests heifer bull but with the power and performance in the cow family behind this guy I would suggest caution. Still this guy offers the best of both worlds, calving ease with power and performance.

**Scrotal: 40 cm**



Beck Farms is proud to support the next generation of cattle producers with the purchase of 4H steers.

59

## Beck's Moonshine 404M

PMC888378 // BECK 404M // Feb 25, 2024 // Polled

LT RUSHMORE 8060 PLD  
**LT AFFINITY 6221 PLD**  
LT ATHENA 1247

LT RIO BRAVO 3181 P  
LT BRENDA'S EASE 3055PLD  
WINN MANS LANZA 610S  
LT SILVER ATHENA 7123 P

BECKS LEGACY 552C  
**BECK'S NADINE 38K**  
BECK'S NADINE 50F

BECK'S TITAN 818U  
BECK'S EVA 196W  
SPARROWS BRAXTON 519C  
BECK'S NADINE 203X

BW	205 DW	CE	BW	WW	YW	MK
69	719	13.5	-3.9	49	96	29

Sure fire heifer bull. Everything about this guy screams heifer bull. From his pedigree to his smooth design to his 69 lbs birthweight. **Scrotal: 39 cm**

**Suitable for heifers.**



Lot 60 | Beck's Trigger 406M

60

## Beck's Trigger 406M

PMC888932 // BECK 406M // Feb 27, 2024 // Polled

LT RUSHMORE 8060 PLD  
**LT AFFINITY 6221 PLD**  
LT ATHENA 1247

LT RIO BRAVO 3181 P  
LT BRENDA'S EASE 3055PLD  
WINN MANS LANZA 610S  
LT SILVER ATHENA 7123 P

BECKS LEGACY 552C  
**BECK'S TASSEL 91K**  
BECK'S TASSEL 76G

BECK'S TITAN 818U  
BECK'S EVA 196W  
DC/KCM MARKSMAN E1145 PET  
BECK'S TASSEL 42E

BW	205 DW	CE	BW	WW	YW	MK
81	665	11.7	-2.4	57	106	30

Calving ease bull to round out the twos. Orphaned at a young age but still battled through to become a very complete individual. **Scrotal: 35 cm**



## Yearling bulls.

As we moved our calving later, we wanted to still be able to offer some yearling bulls in the sale. As with all the other bulls they spent their summer being raised on native and tame pastures, no creep. They were weaned on October 10 and fed a TMR ration that is 15% grain, 70% silage, 6% supplement and 9% lentil straw. When analyzing this group of yearling bulls, you will have to adjust your eyes as they are at least 3 months younger than a lot of yearling bulls selling this spring. As in the past, none of the yearling bulls will be semen tested before the sale. They will be testicular measurement and palpated by a licensed veterinarian. Semen testing will take place in either March or April as dictated by you the buyer. We keep lots of spare bulls. Spare bulls are available for your use in the case that something happens to the bull you purchase between sale day and turn out. Beck Farms reserve the right to draw semen on any of the sale offering for in-herd use only. This will be at our expense and your convenience.



Lot 61 | Beck's Southern Charm 528N

61  
BECK'S

### Beck's Southern Charm 528N

PMC919170 // BECK 528N // Mar 25, 2025 // Polled

BECK'S BOUNTY 206Z  
**BECK'S CHARM 867F**  
BECK'S STARLIGHT 35D

DC/KCM MARKSMAN E1145 PET  
**BECK'S OMEGA 83G**  
BECK'S OMEGA 45E

SPARROWS ELDORADO 361L  
BECK'S DANCER 83X  
SPARROWS KINGSTON 139Y  
BECK'S STARLIGHT 72Y

LT LEDGER 0332 P  
MS TRADEMARK S6112  
CEDARDALE BRILLIANCE 119B  
BECK'S OMEGA 9C

BW	205 DW	CE	BW	WW	YW	MK
96	750	0.4	1.5	73	125	22

Beck's Charm is the type of bull that made the Charolais breed popular. High performing, rugged and hairy. With that in mind we went back and AI'd some cows to him. Southern Charm is exactly what we were expecting and more. Soft made and hairy with an attitude that exudes confidence. This guy is something special and should not be overlooked because of his age.

62  
BECK'S

### Beck's Nickelback 543N

PMC918421 // BECK 543N // Mar 28, 2025 // Horned

SPARROWS BRAXTON 519C  
**BECK'S ACCLAIM 905G**  
BECK'S SASSY 33E

DC/KCM MARKSMAN E1145 PET  
**BECK'S FLAIR 24H**  
BECK'S FLAIR 22F

WINN MANS SKAGGS 663X  
SPARROWS CASINA 121X  
HIGH BLUFF CRAFTSMAN 112C  
BECK'S SASSY 24C

LT LEDGER 0332 P  
MS TRADEMARK S6112  
SPARROWS BRAXTON 519C  
BECK'S FLAIR 33Y

BW	205 DW	CE	BW	WW	YW	MK
107	779	6.8	-0.2	54	101	29

A really strong, heavy haired Beck's Acclaim son here. A big middled, fluent travelling yearling out of a strong Marksman daughter.



Lot 62 | Beck's Nickelback 543N





Lot 63 | Beck's Phoenix 534N

**63**  
Beck's **Phoenix 534N**  
PMC918419 // BECK 534N // Mar 26, 2025 // Polled

BECK'S BOUNTY 206Z  
**BECK'S CHARM 867F**  
BECK'S STARLIGHT 35D

LT LEDGER 0332 P  
**BECK'S TASSEL 24J**  
BECK'S TASSEL 19G

SPARROWS ELDORADO 361L  
BECK'S DANCER 83X  
SPARROWS KINGSTON 139Y  
BECK'S STARLIGHT 72Y

LT BLUEGRASS 4017 P  
LT BRENDA 6120 PLD  
SPARROWS BRAXTON 519C  
BECK'S TASSEL 21E

BW	205 DW	CE	BW	WW	YW	MK
80	713	5.7	-0.6	68	120	23

This soggy middled powerhouse exemplifies what charm is all about. Great feet, low birthweight, and carrying a strong epd profile. If there's any doubt about how we feel about Charm, every embryo we implanted in 2025 was sired by Charm.



Lot 64 | Beck's Baton Rouge 523N

**64**  
Beck's **Baton Rouge 523N**  
PMC918418 // BECK 523N // Mar 21, 2025 // Polled

BECK'S TOWER 720E  
**LAE LUCKENBACH 314L**  
LAE DIVA 6135D

LT AFFINITY 6221 PLD  
**BECK'S KEILI 17J**  
BECK'S KEILI 58G

SPARROWS BRAXTON 519C  
BECK'S GOLDEN GIRL 13Z  
LAE AMARILLO SKY 309A  
LAE STAR SEARCH 681S

LT RUSHMORE 8060 PLD  
LT ATHENA 1247  
SPARROWS BRAXTON 519C  
BECK'S KEILI 77C

BW	205 DW	CE	BW	WW	YW	MK
97	722	7.0	-1.0	65	120	26

One of our first Luckenback sons to sell. Luckenback was purchased from Horseshoe E Charolais for \$31,000 for his high performance, heavy hair coat, strong foot and strong maternal background, it's safe to say he has delivered exactly that here. You will see much more of the Luckenback influence in future sales.



Beck Farms is proud to support the next generation of cattle producers with the purchase of 4H steers.

**65**  
Beck's **Adrenaline 512N**  
PMC918416 // BECK 512N // Mar 04, 2025 // Polled

BECK'S RAZZLE 818F  
**BECK'S SHOWCASE 21117J**  
BECK'S MIST 12E

DC/KCM MARKSMAN E1145 PET  
**BECK'S TIANNA 72L**  
BECK'S TIANNA 59E

SPARROWS BRAXTON 519C  
BECK'S JAZZ 55A  
CEDARDALE ZEAL 125Z  
BECK'S MIST 66C

LT LEDGER 0332 P  
MS TRADEMARK S6112  
SPARROWS BRAXTON 519C  
BECK'S TIANNA 53Y

BW	205 DW	CE	BW	WW	YW	MK
97	774	4.3	-0.9	56	1.9	25

Super sound yearling bull here. His sire Showcase has a perfect set of feet under him and this is transmitted to his sons.



## Lot 66 | Beck's Dynamite 522N

Our first Bancroft son on offer. This guy is a tank, talk about capacity. Out of a very strong footed Citation daughter. He is impressive.



## 66 Beck's Dynamite 522N

PMC918415 // BECK 522N // Mar 20, 2025 // Polled

LT BADGE 9184 PLD  
**WF BANCROFT 301 P**  
WF MISS PATRIOT 711 PLD

BECK'S CITATION 615D  
**BECK'S FLAIR 31K**  
BECK'S FLAIR 3H

LT AUTHORITY 7229 PLD  
LT MADALYNN 6108 PLD  
LT PATRIOT 4004 PLD  
WF MISS TRACKER 417 PLD

BECK'S BOUNTY 206Z  
BECK'S GOLDEN GIRL 33B  
SPARROWS BRAXTON 519C  
BECK'S FLAIR 98F

BW	205 DW	CE	BW	WW	YW	MK
85	846	9.0	-2.1	57	108	23

## 67 Beck's Tulsa 516N

PMC918405 // BECK 516N // Mar 07, 2025 // Polled

SOS APEX PLD 139F  
**BECK'S THREAD 2176J**  
BECK'S TEQUILA 69F

BECK'S INNOVATION 939G  
**BECK'S JAZZ 17L**  
BECK'S JAZZ 18J

LT LEDGER 0332 P  
TMJF BERYLE 447B  
SPARROWS BRAXTON 519C  
BECK'S TEQUILA 76C

SPARROWS BRAXTON 519C  
BECK'S EVA 13D  
DC/KCM MARKSMAN E1145 PET  
BECK'S JAZZ 14F

BW	205 DW	CE	BW	WW	YW	MK
99	847	7.4	-1.1	63	122	25

## Lot 67 | Beck's Tulsa 516N

This Thread yearling is sure to be found sale day. He is a carbon copy of his dad. Stout made hairy with alot of character. His hard working Innovation two year old really outdid herself with this guy.







Lot 68 | Beck's Wildfire 505N

**68**  
Beck's **Wildfire 505N**  
PMC910865 // BECK 505N // Feb 27, 2025 // Polled

SPARROWS BRAXTON 519C  
**BECK'S RAZZLE 818F**  
BECK'S JAZZ 55A

WINN MANS SKAGGS 663X  
SPARROWS CASINA 121X  
CJC UNUSUAL Y798P  
BECK'S JAZZ 336X

BECK'S DODGE 859F  
**BECK'S DESIGNER 39L**  
BECK'S DESIGNER 83J

BECK'S BOUNTY 206Z  
BECK'S CHARISMA 6D  
SPARROWS PRESTON 862F  
BECK'S DESIGNER 49A

BW	205 DW	CE	BW	WW	YW	MK
99	796	5.8	-1.3	47	86	18

Really stylish Razzle son that catches your eye. Mother is a maternal sister to lot 19. Lots of strength in cow family.



Lot 69 | Beck's Galveston 503N

**69**  
Beck's **Galveston 503N**  
PMC910852 // BECK 503M // Feb 22, 2025 // Polled

SPARROWS BRAXTON 519C  
**BECK'S RAZZLE 818F**  
BECK'S JAZZ 55A

WINN MANS SKAGGS 663X  
SPARROWS CASINA 121X  
CJC UNUSUAL Y798P  
BECK'S JAZZ 336X

BECK'S HONOR 888F  
**BECK'S SASSY 7L**  
BECK'S SASSY 44J

RBM KINGSBURY D28  
BECK'S TASSEL 34C  
SPARROWS BRAXTON 519C  
BECK'S SASSY 33E

BW	205 DW	CE	BW	WW	YW	MK
89	727	8.9	-3.4	45	94	20

Another Razzle son out of a perfect udder Honor daughter. Grandma is a full sister to Acclaim. Lots of power in the cow family.



Lot 70 | Beck's Swayze 507N

**70**  
Beck's **Swayze 507N**  
MC910871 // BECK 507N // Feb 27, 2025 // Polled

SOS APEX PLD 139F  
**BECK'S THREAD 2176J**  
BECK'S TEQUILA 69F

LT LEDGER 0332 P  
TMJF BERYLE 447B  
SPARROWS BRAXTON 519C  
BECK'S TEQUILA 76C

SPARROWS CONNELLY 154J  
**BECK'S DANCER 2L**  
BECK'S DANCER 60J

PRO-CHAR JAMIESON 68F  
SPARROWS SPLENDOR 35F  
DC/KCM MARKSMAN E1145 PET  
BECK'S DANCER 54A

BW	205 DW	CE	BW	WW	YW	MK
100	723	-0.5	1.0	65	128	26

Royally bred yearling to end off our section. Sired by Thread the Agribition Top Ten bull from 2022 and his mother stood beside his grandma as they were crowned National Champion female in 2023. Super stylish, hairy and stout.



Dancer 60J & Dancer 2L





# NEW FOR 2027

*Red and Black Two Year Old Simmental Bulls*

As we at Beck Farms constantly look to improve and evolve, we are very excited to announce that in 2027 we will be offering red and black two-year-old Simmental bulls in our bull sale. In 2022, Mason purchased some cows out of the Spring Creek Dispersal, then last spring we acquired a large group of replacement heifers from Deeg Simmentals in Alberta. Our Simmental program is building on the same foundation and mindset as our Charolais program – structural integrity, calving ease, udder quality, growth, and temperament. Our goal is to offer commercial producers stout sound made Simmental bulls with some extra age.











## McCoy Cattle Co.

If you are able to attend on sale day you will quickly understand why 102K quickly became our most heavily used sire the past two years. His progeny of both sexes are pretty easy to identify when going through our program. They are the high volume, high performance, rancher approved type that many of our customer base are looking for. His first daughters are calving this year and udder quality looks to be as expected thus far. *Homozygous Polled*.



Reference  
SIRE

McCoy 9707 **Fairway 102K**  
C03096756 // ZTM 102K // Feb 25, 2022 // Polled

CE	BW	WW	YW	MK	TM	MCE	SC	CW	SCF	UDDER	TEAT	MPI	FMI	RFI	PWG	FAT	REA	MARB	CARCASS
-2.8	7.1	74.1	124.6	24.2	61.3	-0.4	1.7	84.4	16.8	1.3	1.3	118.2	96.2	103	50.5	0.044	0.65	-0.25	86.3

### Lot 71 | Highlight 53N

As I write these footnotes I would definitely rank 53N near the top of our 2026 offering. He is typical of why we are so fond of the 102K progeny. He is goggle eyed, good haired and exceptionally long spined. He is the kind that definitely has the ability to take many breeding programs to the next level. His young 88838 dam is one of Chad's favourites being moderate, easy fleshing, and modern uddered. *Homozygous Polled*.



71

McCoy 102K **Highlight 53N**  
C03125325 // ZTM 53N // Feb 6, 2025 // Polled

BW: 97 lbs				ADJ WW: 654 lbs				ADJ YW: 1185 lbs						
CE	BW	WW	YW	MK	TM	MCE	SC	CW	SCF					
-0.4	5.6	73.5	118.9	27.7	64.5	1.4	2.0	107.9	16.4					
UDDER	TEAT	MPI	FMI	RFI	PWG	FAT	REA	MARB	CARCASS					
1.4	1.5	122.1	92.0	106	45.4	0.024	0.55	-0.29	73.8					

UPS ENDURE 9707  
**MCCOY 9707 FAIRWAY 102K**  
MCCOY 501C SUE 76G

/S MANDATE 88838  
**MCCOY 88838 TRISHA 37J**  
MCCOY 501C TRISHA ET 64F

NJW 79Z Z311 ENDURE 173D ET  
UPS MISS DOMINO 2502 ET  
CHURCHILL KICKSTART 501C ET  
MCCOY 70Y SUE 102D

/S MANDATE 66589 ET  
/S LADY WONDER 4445B ET  
CHURCHILL KICKSTART 501C ET  
MCCOY 719T TRISHA 16Z

HEREFORD YEARLING BULLS // MCCOY CATTLE CO.





Lot 72 | Partner 83N

As you can see by his picture 83N is definitely one of the top 102K sons to evaluate on Feb. 25. His dam has been a consistent long term producer in our program and sure hope she will continue for a while yet. The wrong DNA test was requested for 83N when DNA was submitted initially so his EPDs (at time of printing) are the only ones in the book that are not genomically enhanced. *Homozygous Polled.*

72

## McCoy 102K Partner 83N

C03126455 // ZTM 83N // Feb 14, 2025 // Polled

UPS ENDURE 9707  
**MCCOY 9707 FAIRWAY 102K**  
MCCOY 501C SUE 76G

PCL HOMEGROWN BALANCE 8Y 33B  
**MCCOY R4EAL LADY ET 23E**  
PCL REAL LADY 10H 5T

NJW 79Z Z311 ENDURE 173D ET  
UPS MISS DOMINO 2502 ET  
CHURCHILL KICKSTART 501C ET  
MCCOY 70Y SUE 102D

NJW 73S W18 HOMEGROWN 8Y ET  
HAROLDSON'S CARLA T100 27X  
DR WORLD CLASS 517 10H  
PCL REAL LADY 23L 35R

BW: 96 lbs			ADJ WW: 607 lbs				ADJ YW: 1105 lbs			
CE	BW	WW	YW	MK	TM	MCE	SC	CW	SCF	
0.8	6.9	62.9	105.1	26.7	58.2	3.7	1.5	65.0	16.0	
UDDER	TEAT	MPI	FMI	RFI	PWG	FAT	REA	MARB	CARCASS	
1.3	1.3	123.9	105.8	101	42.2	0.035	0.49	-0.20	71.6	

73

## McCoy 102K Remington 100N

C03126460 // ZTM 100N // Feb 21, 2025 // Polled (Scur)

UPS ENDURE 9707  
**MCCOY 9707 FAIRWAY 102K**  
MCCOY 501C SUE 76G

CHURCHILL SENSATION 028X  
**MCCOY 28X MELISSA 3F**  
MCCOY 2311 MELISSA 40D

NJW 79Z Z311 ENDURE 173D ET  
UPS MISS DOMINO 2502 ET  
CHURCHILL KICKSTART 501C ET  
MCCOY 70Y SUE 102D

UPS DOMINO 3027  
CHURCHILL LADY 7202T ET  
KCF BENNETT ENCORE Z311 ET  
MCCOY 49S MELISSA 28Z

BW: 86 lbs			ADJ WW: 581 lbs				ADJ YW: 1195 lbs			
CE	BW	WW	YW	MK	TM	MCE	SC	CW	SCF	
5.6	1.6	65.6	109.9	29.1	61.9	4.3	1.6	69.1	26.8	
UDDER	TEAT	MPI	FMI	RFI	PWG	FAT	REA	MARB	CARCASS	
1.3	1.3	179.6	133.7	108	44.3	0.084	0.48	0.02	80.7	



Lot 73 | Remington 100N

100N has been a bull that I have always tried to punch holes in but have had trouble doing so. He is our number one gaining bull post weaning. His Sensation dam is a beautiful female that carries extra pigment and marking much like his. 100N was a member of our group of bulls at Agribition if you happened to get to town. *Heterozygous Polled.*





74

## McCoy 102K Tactic 132N

C03126465 // ZTM 132N // Mar 2, 2025 // Polled

UPS ENDURE 9707

**MCCOY 9707 FAIRWAY 102K**

MCCOY 501C SUE 76G

MCCOY 719T MATRIX ET 30E

**MCCOY 30E CONNIE 122J**

MCCOY 53A CONNIE 175F

NJW 79Z Z311 ENDURE 173D ET

UPS MISS DOMINO 2502 ET

CHURCHILL KICKSTART 501C ET

MCCOY 70Y SUE 102D

TH 122 71I VICTOR 719T

MCCOY P20 ZENA 1B

MCCOY 70Y SKYFALL 53A

MCCOY 4Y CONNIE 207A

BW: 94 lbs				ADJ WW: 606 lbs				ADJ YW: 1212 lbs		
CE	BW	WW	YW	MK	TM	MCE	SC	CW	SCF	GLED
0.9	3.7	55.4	92.4	31.3	59.0	1.8	1.7	26.9	22.9	
UDDER	TEAT	MPI	FMI	RFI	PWG	FAT	REA	MARB	CARCASS	
1.4	1.4	150.6	102.9	92	37.0	0.064	0.18	0.10	52.0	

132N is becoming more of a favourite around here each time we handle the bulls as the growth and masculinity that continues to show up is impressive. 132N is just his mother's third calf but the first two starred in the front end of our bull sale order in both 2024 and 2025. *Homozygous Polled.*



## McCoy Bull Development

The McCoy bulls spent the summer of 2025 on a combination of tame and native grass pasture. The bulls were offered creep feed in late August to aid in the weaning process. Mother nature blessed us with a good year having decent moisture through much of the growing season and definitely less heat in July and August than we normally expect.

Bulls were vaccinated and 205 day weights were recorded on September 6. Bulls were weaned the first week in October. Since weaning, bulls have been developed on a high roughage diet including silage, hay, oats, and a protein supplement. 365 day weights were recorded on January 16.

As in the past years, our bulls will NOT be semen tested prior to sale day. All bulls will be measured and palpated by Deep South Animal Clinic prior to sale day. Semen testing will take place in late March or April as dictated by the buyer. We retain a large number of high quality bulls to offer in the event a bull does not pass his semen evaluation.

All bulls have been vaccinated with Vista Once SQ and Vision 8 in both spring and fall of 2025. They have also received Ivermectin and Clean-Up over the course of the fall and winter.

All McCoy bulls will receive an initial vaccination for footrot prior to delivery in the spring.





Lot 75 | McCoy 102K Patton 28N

75

## McCoy 102K Patton 28N

C03125019 // ZTM 28N // Jan 31, 2025 // Polled

UPS ENDURE 9707  
**MCCOY 9707 FAIRWAY 102K**  
MCCOY 501C SUE 76G

/S MANDATE 88838  
**MCCOY 88838 SUSIE 15J**  
MCCOY 719T SUSIE ET 418B

NJW 79Z Z311 ENDURE 173D ET  
UPS MISS DOMINO 2502 ET  
CHURCHILL KICKSTART 501C ET  
MCCOY 70Y SUE 102D

/S MANDATE 66589 ET  
/S LADY WONDER 4445B ET  
TH 122 71I VICTOR 719T  
MCCOY 58G SUSIE 33K

BW: 90 lbs			ADJ WW: 637 lbs				ADJ YW: 1110 lbs			
CE	BW	WW	YW	MK	TM	MCE	SC	CW	SCF	
-0.1	4.1	70.0	119.8	31.3	66.3	2.5	1.7	94.1	18.8	
UDDER	TEAT	MPI	FMI	RFI	PWG	FAT	REA	MARB	CARCASS	
1.3	1.2	135.2	123.0	98	49.8	0.024	0.75	-0.11	88.0	

28N is one of the larger framed, longer bodied 102K sons in this year's offering. His dam has a bit more scale to her as well. Not sure how this bull will measure yet but scrotal has always been notably evident with this guy. *Homozygous Polled*.



Lot 76 | McCoy 102K Evolution 23N

76

## McCoy 102K Evolution 23N

C03125016 // ZTM 23N // Jan 29, 2025 // Polled

UPS ENDURE 9707  
**MCCOY 9707 FAIRWAY 102K**  
MCCOY 501C SUE 76G

MCCOY 719T MATRIX ET 30E  
**MCCOY 30E MELISSA 21K**  
MCCOY 351E MELISSA 270H

NJW 79Z Z311 ENDURE 173D ET  
UPS MISS DOMINO 2502 ET  
CHURCHILL KICKSTART 501C ET  
MCCOY 70Y SUE 102D

TH 122 71I VICTOR 719T  
MCCOY P20 ZENA 1B  
CMF 20X EBY 351E  
MCCOY B451 MELISSA 88E

BW: 84 lbs			ADJ WW: 523 lbs				ADJ YW: 919 lbs			
CE	BW	WW	YW	MK	TM	MCE	SC	CW	SCF	
0.3	4.5	68.1	110.4	19.7	53.8	-1.9	1.6	74.8	17.5	
UDDER	TEAT	MPI	FMI	RFI	PWG	FAT	REA	MARB	CARCASS	
1.3	1.3	121.8	125.9	99	42.3	0.064	0.48	-0.07	78.2	

23N is a soft-made, big hair coat bull that is more moderate in type than some of his brothers. Look for him to leave stout, easy fleshing replacement females with extra udder quality and functionality. *Homozygous Polled*.



Lot 77 | McCoy 102K Mint 203N

77

## McCoy 102K Mint 203N

C03129050 // ZTM 203N // Mar 17, 2025 // Polled

UPS ENDURE 9707  
**MCCOY 9707 FAIRWAY 102K**  
MCCOY 501C SUE 76G

CHURCHILL KICKSTART 501C ET  
**MCCOY 501C TRISHA ET 64F**  
MCCOY 719T TRISHA 16Z

NJW 79Z Z311 ENDURE 173D ET  
UPS MISS DOMINO 2502 ET  
CHURCHILL KICKSTART 501C ET  
MCCOY 70Y SUE 102D

CHURCHILL RED BULL 200Z  
HVH OKSANA 4L 33N  
TH 122 71I VICTOR 719T  
MCCOY R117 TRISHA 14X

BW: 102 lbs			ADJ WW: 615 lbs				ADJ YW: 1268 lbs			
CE	BW	WW	YW	MK	TM	MCE	SC	CW	SCF	
-2.4	5.7	69.8	114.8	23.7	58.6	0.1	1.5	96.3	18.5	
UDDER	TEAT	MPI	FMI	RFI	PWG	FAT	REA	MARB	CARCASS	
1.2	1.2	125.4	124.7	110	45.0	0.024	0.68	-0.11	82.8	

203N ranks very close to the top of the chart for post weaning ADG. This guy will definitely sire weaning weight if you still sell calves by the pound in the fall. His dam, who was a 4-H favourite around here, will turn 8 years old in the spring. Big time performance bull here. *Homozygous Polled*.



## Lot 78 | Kingdom 69N

69N has never been overpowering in any way but always a bull that has caught my eye due to his overall phenotype and excellent hair coat. His dam has been a good one for us putting the majority of her calves into either the top of the sale order in terms of bulls or the top of the replacement pen with her daughters. His granddam has a production record that is unmatched at our place.  
*Homozygous Polled.*



78

McCoy 102K **Kingdom 69N**

C03126198 // ZTM 69N // Feb 10, 2025 // Polled

UPS ENDURE 9707  
**MCCOY 9707 FAIRWAY 102K**  
MCCOY 501C SUE 76G

MCCOY 31Y KINGDOM 30A  
**MCCOY 30A TRISHA 200E**  
MCCOY 49S TRISHA 23B

NJW 79Z Z311 ENDURE 173D ET  
UPS MISS DOMINO 2502 ET  
CHURCHILL KICKSTART 501C ET  
MCCOY 70Y SUE 102D

TH 6M 755T PINNACLE 31Y  
MCCOY 58G TRISHA 8U  
MCCOY 55M ABSOLUTE 49S  
MCCOY 719T TRISHA 16Z

BW: 96 lbs				ADJ WW: 642 lbs				ADJ YW: 1066 lbs			
CE	BW	WW	YW	MK	TM	MCE	SC	CW	SCF	GEPD	
-1.3	4.2	60.6	105.6	27.7	58.0	-2.2	1.3	74.1	20.6		
UDDER	TEAT	MPI	FMI	RFI	PWG	FAT	REA	MARB	CARCASS		
1.1	1.2	130.8	111.3	106	45.0	0.064	0.59	-0.10	94.3		

79

McCoy 102K **Patriot 87N**

C03126456 // ZTM 87N // Feb 16, 2025 // Polled

UPS ENDURE 9707  
**MCCOY 9707 FAIRWAY 102K**  
MCCOY 501C SUE 76G

KCF BENNETT ENCORE Z311 ET  
**MCCOY Z311 CONNIE 56D**  
MCCOY 5Z CONNIE 92B

NJW 79Z Z311 ENDURE 173D ET  
UPS MISS DOMINO 2502 ET  
CHURCHILL KICKSTART 501C ET  
MCCOY 70Y SUE 102D

SCHU-LAR ON TARGET 22S  
KCF MISS REVOLUTION X338 ET  
MCCOY 743 FACEOFF 5Z  
MCCOY 719T CONNIE 20Z

BW: 90 lbs				ADJ WW: 519 lbs				ADJ YW: 1041 lbs			
CE	BW	WW	YW	MK	TM	MCE	SC	CW	SCF	GEPD	
0.1	4.6	71.7	128.1	21.6	57.5	6.2	1.1	131.7	19.0		
UDDER	TEAT	MPI	FMI	RFI	PWG	FAT	REA	MARB	CARCASS		
1.2	1.2	140.3	193.7	96	56.4	0.064	0.63	0.17	97.2		

## Lot 79 | Patriot 87N

This short marked, attractive made 102K son comes from a cow that has done it time and time again here. She is a tank of a cow that seems to pass along her super easy going temperament to her progeny.  
*Homozygous Polled.*



HEREFORD YEARLING BULLS \\\ MCCOY CATTLE CO.





Lot 80 | McCoy 102K Vintage 215N

80

## McCoy 102K Vintage 215N

C03127043 // ZTM 215N // Mar 20, 2025 // Polled (Scur)

UPS ENDURE 9707  
**MCCOY 9707 FAIRWAY 102K**  
MCCOY 501C SUE 76G

NJW 79Z Z311 ENDURE 173D ET  
UPS MISS DOMINO 2502 ET  
CHURCHILL KICKSTART 501C ET  
MCCOY 70Y SUE 102D

KCF BENNETT IMPACT B451  
**MCCOY B451 SUSIE 155G**  
MCCOY 5Z SUSIE 136B

KCF BENNETT REVOLUTION X51  
KCF MISS M326 T56  
MCCOY 743 FACEOFF 5Z  
MCCOY 23U SUSIE 160Z

BW: 88 lbs			ADJ WW: 675 lbs				ADJ YW: 1265 lbs			
CE	BW	WW	YW	MK	TM	MCE	SC	CW	SCF	
4.6	3.7	61.3	107.8	25.2	55.9	0.2	1.0	72.1	24.2	
UDDER	TEAT	MPI	FMI	RFI	PWG	FAT	REA	MARB	CARCASS	
1.2	1.3	157.2	150.7	100	46.5	0.034	0.44	0.21	71.6	

Vinny 215N has always been a popular bull among the residents of McCoy Cattle Co. From an early age 215N had the look of a herd bull despite his age. His Impact dam is a beauty. Impact has sired a great group of females both here and at Crittenden's. *Heterozygous Polled.*

81

## McCoy 102K Judge 145N

C03129047 // ZTM 145N // Mar 4, 2025 // Polled

UPS ENDURE 9707  
**MCCOY 9707 FAIRWAY 102K**  
MCCOY 501C SUE 76G

NJW 79Z Z311 ENDURE 173D ET  
UPS MISS DOMINO 2502 ET  
CHURCHILL KICKSTART 501C ET  
MCCOY 70Y SUE 102D

CMF 20X EBY 351E  
**MCCOY 351E MELISSA 270H**  
MCCOY B451 MELISSA 88E

NJW 33TB 100W TRUST 167Y  
CMF 823T VICTORIA 20X  
KCF BENNETT IMPACT B451  
MCCOY 49S MELISSA 28Z

BW: 102 lbs			ADJ WW: 559 lbs				ADJ YW: 1146 lbs			
CE	BW	WW	YW	MK	TM	MCE	SC	CW	SCF	
-0.8	5.2	66.7	105.7	33.8	67.2	2.0	2.0	60.7	21.4	
UDDER	TEAT	MPI	FMI	RFI	PWG	FAT	REA	MARB	CARCASS	
1.3	1.4	144.5	91.5	107	39.0	0.034	0.62	-0.07	90.7	

145N is another example of why I haven't quit my day job to become a livestock photographer. Check this guy out in person as he is the loose made, good haired, female producing kind that some many black and red cows need to be introduced to in Western Canada. Real solid bull from one end to the other. Another example of why 102K continues to see such heavy service here. *Homozygous Polled.*

82

## McCoy 102K Glacier 129N

C03129045 // ZTM 129N // Mar 1, 2025 // Polled (Scur)

UPS ENDURE 9707  
**MCCOY 9707 FAIRWAY 102K**  
MCCOY 501C SUE 76G

NJW 79Z Z311 ENDURE 173D ET  
UPS MISS DOMINO 2502 ET  
CHURCHILL KICKSTART 501C ET  
MCCOY 70Y SUE 102D

MCCOY 70Y SKYFALL 53A  
**MCCOY 53A NOLA 148G**  
MCCOY 23U NOLA 156Z

JDH 117R EQUITY 70Y ET  
MCCOY 25M ALISON 64W  
BBSF 68R ULTIMATE 23U  
TALECO 145R NOLA 32U

BW: 110 lbs			ADJ WW: 663 lbs				ADJ YW: 1213 lbs			
CE	BW	WW	YW	MK	TM	MCE	SC	CW	SCF	
-2.2	7.0	64.6	107.8	26.6	58.9	1.6	1.2	88.3	21.2	
UDDER	TEAT	MPI	FMI	RFI	PWG	FAT	REA	MARB	CARCASS	
1.2	1.2	138.0	98.5	99	43.2	0.054	0.49	0.02	80.8	

Power bull alert with 129N. This guy packs a bit more birth weight than some but definitely expect his calves to push down the scale confidently at weaning. Add this guy to your bull battery to add some weaning weight without sacrificing maternal ability. *Heterozygous Polled.*



Lot 82 | McCoy 102K Glacier 129N



## Lot 83 | Reserve 109N

109N has been a fan favourite a big portion of the year around our place. He is a bit bigger framed than some of our cattle but carries extra depth of body to go with it. He is definitely a bull that will sire some payweight. His Matrix bred dam is very typical of the Matrix females; moderate, easy fleshing, and ideal uddered. *Homozygous Polled.*



83

### McCoy 102K Reserve 109N

C03126461 // ZTM 109N // Feb 24, 2025 // Polled

UPS ENDURE 9707  
**MCCOY 9707 FAIRWAY 102K**  
MCCOY 501C SUE 76G

MCCOY 719T MATRIX ET 30E  
**MCCOY 30E SUE 141K**  
MCCOY 53A SUE 257F

NJW 79Z Z311 ENDURE 173D ET  
UPS MISS DOMINO 2502 ET  
CHURCHILL KICKSTART 501C ET  
MCCOY 70Y SUE 102D

TH 122 71I VICTOR 719T  
MCCOY P20 ZENA 1B  
MCCOY 70Y SKYFALL 53A  
MCCOY 58G SUE 138R

BW: 97 lbs			ADJ WW: 643 lbs				ADJ YW: 1237 lbs			
CE	BW	WW	YW	MK	TM	MCE	SC	CW	SCF	
-1.3	6.0	73.2	119.7	30.9	67.5	0.3	1.9	92.7	22.4	
UDDER	TEAT	MPI	FMI	RFI	PWG	FAT	REA	MARB	CARCASS	
1.3	1.3	146.9	138.1	96	46.5	0.074	0.29	-0.06	62.5	

84

### McCoy 102K Blueline 194N

C03127041 // ZTM 194N // Mar 13, 2025 // Polled

UPS ENDURE 9707  
**MCCOY 9707 FAIRWAY 102K**  
MCCOY 501C SUE 76G

KCF BENNETT IMPACT B451  
**MCCOY B451 DAHLIA 72E**  
MCCOY 31Y DAHLIA 113A

NJW 79Z Z311 ENDURE 173D ET  
UPS MISS DOMINO 2502 ET  
CHURCHILL KICKSTART 501C ET  
MCCOY 70Y SUE 102D

KCF BENNETT REVOLUTION X51  
KCF MISS M326 T56  
TH 6M 755T PINNACLE 31Y  
MCCOY 58G DAHLIA 42T

BW: 98 lbs			ADJ WW: 622 lbs				ADJ YW: 1196 lbs			
CE	BW	WW	YW	MK	TM	MCE	SC	CW	SCF	
1.6	4.8	67.0	116.0	20.7	54.2	2.2	1.7	75.2	13.6	
UDDER	TEAT	MPI	FMI	RFI	PWG	FAT	REA	MARB	CARCASS	
1.3	1.3	112.9	124.4	101	49.0	0.044	0.66	-0.16	85.9	

## Lot 84 | Blueline 194N

194N is a soft made, powerful headed 102K son that several visitors took a liking to over the course of 2025. His KCF Bennett Impact sired dam has been a consistent producer for us. The Impact females have made a strong contribution to our breeding program. *Homozygous Polled.*







Lot 85 | McCoy 102K Surpass 121N

85

## McCoy 102K Surpass 121N

C03126464 // ZTM 121N // Feb 27, 2025 // Polled

UPS ENDURE 9707  
**MCCOY 9707 FAIRWAY 102K**  
MCCOY 501C SUE 76G

HILLS-GALORE 44Z REWIND 147E  
**MCCOY 147E CONNIE 21H**  
MCCOY 70Y CONNIE 76D

NJW 79Z Z311 ENDURE 173D ET  
UPS MISS DOMINO 2502 ET  
CHURCHILL KICKSTART 501C ET  
MCCOY 70Y SUE 102D

RST X51 REVOLUTION 410Z  
HILLS-GALORE 52R CALLI 44Z  
JDH 117R EQUITY 70Y ET  
MCCOY W18 CONNIE ET 15Z

BW: 92 lbs				ADJ WW: 608 lbs				ADJ YW: 1126 lbs			
CE	BW	WW	YW	MK	TM	MCE	SC	CW	SCF		
3.2	3.5	66.9	111.2	24.4	57.9	0.8	1.5	94.5	18.1		
UDDER	TEAT	MPI	FMI	RFI	PWG	FAT	REA	MARB	CARCASS		
1.3	1.4	131.8	106.1	103	44.3	0.084	0.58	0.08	88.2		

121N has been a calf that has caught my eye since birth. He is a long-spined, deep bodied 102K son that carries extra spring of rib about him (like many of the 102K group). His dam is a phenotypic specimen that makes checking pastures a delight through the summer months. He is a maternal brother to the dam of Lot 107. *Homozygous Polled.*

86

## McCoy 102K Illusion 59N

C03125326 // ZTM 59N // Feb 8, 2025 // Polled

UPS ENDURE 9707  
**MCCOY 9707 FAIRWAY 102K**  
MCCOY 501C SUE 76G

EFBEEF B413 PRIMESTOCK E007 ET  
**MCCOY 007 ALISON 210K**  
MCCOY 31Y ALISON 155C

NJW 79Z Z311 ENDURE 173D ET  
UPS MISS DOMINO 2502 ET  
CHURCHILL KICKSTART 501C ET  
MCCOY 70Y SUE 102D

EFBEEF BR VALIDATED B413  
EFBEEF 6378 KATE W484  
TH 6M 755T PINNACLE 31Y  
MCCOY 23U ALISON 169Y

BW: 82 lbs				ADJ WW: 593 lbs				ADJ YW: 1045 lbs			
CE	BW	WW	YW	MK	TM	MCE	SC	CW	SCF		
6.1	2.9	64.3	109.6	26.4	58.6	1.0	1.6	72.5	24.3		
UDDER	TEAT	MPI	FMI	RFI	PWG	FAT	REA	MARB	CARCASS		
1.4	1.4	164.6	177.3	90	45.3	0.084	0.61	0.28	87.5		

59N is a super complete 102K son out a young female that I feel has what it takes to be here for a long time. His grand dam was a long lived productive female in our herd. A bit more carcass quality in this guy with his dam bringing top end values into the equation. *Homozygous Polled.*

87

## McCoy 9707 Goal Line 135N

C03129046 // ZTM 135N // Mar 3, 2025 // Polled

NJW 79Z Z311 ENDURE 173D ET  
**UPS ENDURE 9707**  
UPS MISS DOMINO 2502 ET

MCCOY 70Y SKYFALL 53A  
**MCCOY 53A ALISON 151H**  
MCCOY 31Y ALISON 155C

KCF BENNETT ENCORE Z311 ET  
BW 91H 100W RITA 79Z ET  
UPS DOMINO 5216  
NJW BW LADYSPORT DEW 78P ET

JDH 117R EQUITY 70Y ET  
MCCOY 25M ALISON 64W  
TH 6M 755T PINNACLE 31Y  
MCCOY 23U ALISON 169Y

BW: 100 lbs				ADJ WW: 640 lbs				ADJ YW: 1129 lbs			
CE	BW	WW	YW	MK	TM	MCE	SC	CW	SCF		
-0.4	5.8	67.8	103.3	22.9	56.8	-3.1	1.5	80.8	21.2		
UDDER	TEAT	MPI	FMI	RFI	PWG	FAT	REA	MARB	CARCASS		
1.4	1.4	135.0	129.5	98	35.5	0.024	0.54	0.14	66.0		

135N is sired by UPS Endure 9707 making him a paternal brother to Fairway 102K. 9707 has seen reduced service due to heavy use of 102K but continues to be one of the more impressive mature bulls that has walked our pastures. A maternal brother to 135N was one of top selling bulls in 2024 selling to Harvey Hlavka. *Heterozygous Polled.*



Lot 87 | McCoy 9707 Goal Line 135N





## McCoy Cattle Co.

Compass continues to sire high performing, loose-hided, good haired cattle. His daughters are now in production and we are pleased with how they are fitting into our program. Udder structure is definitely a very strong characteristic of his daughters. Select a son to sire strong weaning weight calves and leave daughters that should function well in a wide variety of situations.

*Homozygous Polled.*



Reference  
SIRE  
McCoy 147E **Compass ET 31H**  
C03077958 // ZTM 31H // Feb 10, 2020 // Polled

CE	BW	WW	YW	MK	TM	MCE	SC	CW	SCF	UDDER	TEAT	MPI	FMI	RFI	PWG	FAT	REA	MARB	CARCASS
2.1	3.7	76.9	126.2	26.7	65.2	0.2	1.0	134.5	17.5	1.4	1.5	129.0	113.6	95	49.3	0.014	0.33	0.00	70.9

### Lot 88 | Windfall 154N

154N is what he is. You get what you see in the picture with this guy. Not overpowering but well balanced and functionally designed from one end to the other. His dam is a high volume, big barrelled gal that we expect to see much more to come from in the next few years.

*Homozygous Polled.*



88

McCoy 31H **Windfall 154N**

C03127035 // ZTM 154N // Mar 5, 2025 // Polled

BW: 102 lbs			ADJ WW: 632 lbs				ADJ YW: 1146 lbs			
CE	BW	WW	YW	MK	TM	MCE	SC	CW	SCF	
-3.8	6.3	81.5	128.2	22.2	63.0	1.0	1.3	150.4	19.7	
UDDER	TEAT	MPI	FMI	RFI	PWG	FAT	REA	MARB	CARCASS	
1.3	1.3	130.6	100.0	99	46.7	0.004	0.46	-0.23	74.6	

HILLS-GALORE 44Z REWIND 147E  
**MCCOY 147E COMPASS ET 31H**  
MCCOY 49S KALLA 10D

/S MANDATE 88838  
**MCCOY 88838 FREEDOM 47J**  
DTHF FREEDOM 47F

RST X51 REVOLUTION 4102  
HILLS-GALORE 52R CALLI 44Z  
MCCOY 55M ABSOLUTE 49S  
MCCOY 31Y KALLA 120B

/S MANDATE 66589 ET  
/S LADY WONDER 4445B ET  
WCC 17Y MR LAMBEAU 1337C  
DTHF DALIHA 27D





Lot 89 | McCoy 31H Tundra 141N

89

## McCoy 31H Tundra 141N

C03126469 // ZTM 141N // Mar 3, 2025 // Polled

HILLS-GALORE 44Z REWIND 147E  
**MCCOY 147E COMPASS ET 31H**  
MCCOY 49S KALLA 10D

NJW 160B 028X HISTORIC 81E ET  
**MCCOY 81E ZENA 40J**  
MCCOY 53A ZENA 82G

RST X51 REVOLUTION 4102  
HILLS-GALORE 52R CALLI 44Z  
MCCOY 55M ABSOLUTE 49S  
MCCOY 31Y KALLA 120B

CHURCHILL SENSATION 028X  
NJW 73S 38W DAYDREAM 160B  
MCCOY 70Y SKYFALL 53A  
MCCOY 33T ZENA 48Z

BW: 102 lbs			ADJ WW: 714 lbs			ADJ YW: 1169 lbs			
CE	BW	WW	YW	MK	TM	MCE	SC	CW	SCF
-2.5	4.5	65.7	100.5	35.4	68.3	-1.7	0.5	91.4	19.7
UDDER	TEAT	MPI	FMI	RFI	PWG	FAT	REA	MARB	CARCASS
1.4	1.4	127.4	61.8	93	34.8	0.034	0.93	0.05	85.8

141N is a long-bodied, well-balanced Compass son that comes from a moderate framed Historic daughter that is near the top of the list in terms of udder quality (not an easy list to contend on at our place over the last decade). *Heterozygous Polled*.



Lot 90 | McCoy 31H Caesar 155N

90

## McCoy 31H Caesar 155N

C03127036 // ZTM 155N // Mar 6, 2025 // Polled

HILLS-GALORE 44Z REWIND 147E  
**MCCOY 147E COMPASS ET 31H**  
MCCOY 49S KALLA 10D

MCCOY 719T MATRIX ET 30E  
**MCCOY 30E DAHLIA 144K**  
MCCOY B451 DAHLIA 72E

RST X51 REVOLUTION 4102  
HILLS-GALORE 52R CALLI 44Z  
MCCOY 55M ABSOLUTE 49S  
MCCOY 31Y KALLA 120B

TH 122 71I VICTOR 719T  
MCCOY P20 ZENA 1B  
KCF BENNETT IMPACT B451  
MCCOY 31Y DAHLIA 113A

BW: 78 lbs			ADJ WW: 560 lbs			ADJ YW: 1070 lbs			
CE	BW	WW	YW	MK	TM	MCE	SC	CW	SCF
9.9	1.0	58.7	96.4	32.8	62.2	4.4	0.85	85.9	19.0
UDDER	TEAT	MPI	FMI	RFI	PWG	FAT	REA	MARB	CARCASS
1.4	1.5	150.3	124.5	90	37.7	0.044	0.04	0.04	50.4

Soggy and big barreled would be a couple of ways to describe 155N. He comes by it honestly as his Matrix dam is a high capacity, easy fleshing female that would make the cow business pretty easy if they were all built like that. *Homozygous Polled*.



Lot 91 | McCoy 31H Vantage 134N

91

## McCoy 31H Vantage 134N

C03126466 // ZTM 134N // Mar 3, 2025 // Polled

HILLS-GALORE 44Z REWIND 147E  
**MCCOY 147E COMPASS ET 31H**  
MCCOY 49S KALLA 10D

RSK MHPH 10Y CAN-AM ET 75C  
**MHPH 75C KAREN 305E**  
MHPH 106A KAREN 1031C

RST X51 REVOLUTION 4102  
HILLS-GALORE 52R CALLI 44Z  
MCCOY 55M ABSOLUTE 49S  
MCCOY 31Y KALLA 120B

NJW 73S W18 HOMETOWN 10Y ET  
RSK 6U MISS SAGE 64Y  
MHPH 521X ACTION 106A  
GHC-TABOO-TCF MISS KAREN 4T

BW: 92 lbs			ADJ WW: 597 lbs				ADJ YW: 1080 lbs		
CE	BW	WW	YW	MK	TM	MCE	SC	CW	SCF
4.2	0.7	54.8	89.0	33.9	61.3	0.3	1.0	70.4	23.2
UDDER	TEAT	MPI	FMI	RFI	PWG	FAT	REA	MARB	CARCASS
1.4	1.5	152.1	56.6	96	34.2	0.034	-0.02	-0.06	50.8

134N is an attractive marked Compass son that comes from a dam that was our pick of the C&T dispersal in 2022. 134N will sire steers that perform and replacement females that will last. *Heterozygous Polled*.



92

## McCoy 31H Discover 127N

C03129044 // ZTM 127N // Feb 28, 2025 // Polled

HILLS-GALORE 44Z REWIND 147E  
**MCCOY 147E COMPASS ET 31H**  
 MCCOY 49S KALLA 10D

MCCOY 70Y SKYFALL 53A  
**MCCOY 53A CONNIE 175F**  
 MCCOY 4Y CONNIE 207A

RST X51 REVOLUTION 4102  
 HILLS-GALORE 52R CALLI 44Z  
 MCCOY 55M ABSOLUTE 49S  
 MCCOY 31Y KALLA 120B

JDH 117R EQUITY 70Y ET  
 MCCOY 25M ALISON 64W  
 MCCOY P20 BRIGADE 4Y  
 MCCOY 58G CONNIE 119L

BW: 91 lbs			ADJ WW: 564 lbs				ADJ YW: 1125 lbs			
CE	BW	WW	YW	MK	TM	MCE	SC	CW	SCF	
5.5	1.5	48.9	84.5	29.2	53.7	2.2	0.9	69.5	23.0	
UDDER	TEAT	MPI	FMI	RFI	PWG	FAT	REA	MARB	CARCASS	
1.5	1.6	154.3	123.6	106	35.6	0.044	0.34	0.27	52.8	

127N is a long bodied, short marked well pigmented Compass son that comes from a special cow family at our place. 127N's dam is a full sister to Connie 56E that has been a covergirl for us a few times. 127N's maternal sister, 122J, is the dam of Lot 74. Buy this bull if you are looking for big time maternal depth. *Homozygous Polled.*



Lot 92 | McCoy 31H Discover 127N

93

## McCoy 31H Phoenix 99N

C03126459 // ZTM 99N // Feb 21, 2025 // Polled

HILLS-GALORE 44Z REWIND 147E  
**MCCOY 147E COMPASS ET 31H**  
 MCCOY 49S KALLA 10D

/S MOMENTUM 00054 ET  
**MCCOY 54 TRISHA 129K**  
 MCCOY 351E TRISHA 189H

RST X51 REVOLUTION 4102  
 HILLS-GALORE 52R CALLI 44Z  
 MCCOY 55M ABSOLUTE 49S  
 MCCOY 31Y KALLA 120B

/S MANDATE 66589 ET  
 /S LADY HOMETOWN 5364C ET  
 CMF 20X EBY 351E  
 MCCOY B451 TRISHA 73E

BW: 82 lbs			ADJ WW: 691 lbs				ADJ YW: 1155 lbs			
CE	BW	WW	YW	MK	TM	MCE	SC	CW	SCF	
6.8	2.7	75.1	118.4	29.3	66.9	-0.1	1.5	121.8	22.2	
UDDER	TEAT	MPI	FMI	RFI	PWG	FAT	REA	MARB	CARCASS	
1.4	1.5	156.5	138.5	100	43.3	0.034	0.47	0.18	78.8	

99N is a high volume, easy fleshing, good haired bull that is so typical of the Compass progeny. Expect him to sire marketable steers and easy fleshing, competent replacement heifers. *Homozygous Polled.*



Lot 93 | McCoy 31H Phoenix 99N

94

## McCoy 31H Carnival 168N

C03127037 // ZTM 168N // Mar 9, 2025 // Polled

HILLS-GALORE 44Z REWIND 147E  
**MCCOY 147E COMPASS ET 31H**  
 MCCOY 49S KALLA 10D

/S MANDATE 88838  
**MCCOY 88838 LIZZIE 52J**  
 MCCOY 2426 LIZZIE 68F

RST X51 REVOLUTION 4102  
 HILLS-GALORE 52R CALLI 44Z  
 MCCOY 55M ABSOLUTE 49S  
 MCCOY 31Y KALLA 120B

/S MANDATE 66589 ET  
 /S LADY WONDER 4445B ET  
 MOHICAN THM EXCEDE Z426  
 MCCOY 409W LIZZIE 161Y

BW: 90 lbs			ADJ WW: 695 lbs				ADJ YW: 1263 lbs			
CE	BW	WW	YW	MK	TM	MCE	SC	CW	SCF	
-0.6	4.4	81.3	133	22	62.5	-2.6	1.3	122.0	18.9	
UDDER	TEAT	MPI	FMI	RFI	PWG	FAT	REA	MARB	CARCASS	
1.4	1.5	128.3	127.6	94	51.3	0.044	0.37	-0.08	70.2	

168N is a high performance Compass son with a bit more frame and scale than some. His granddam produced our high selling bull going to Beery Land & Livestock in Montana three years ago. That high seller was also sired by Compass. *Homozygous Polled.*



Lot 94 | McCoy 31H Carnival 168N





Lot 95 | McCoy 31H Option 211N

95

## McCoy 31H Option 211N

C03129053 // ZTM 211N // Mar 19, 2025 // Polled

HILLS-GALORE 44Z REWIND 147E  
**MCCOY 147E COMPASS ET 31H**  
MCCOY 49S KALLA 10D

RST X51 REVOLUTION 4102  
HILLS-GALORE 52R CALLI 44Z  
MCCOY 55M ABSOLUTE 49S  
MCCOY 31Y KALLA 120B

MCCOY 70Y SKYFALL 53A  
**MCCOY 53A ALISON 120G**  
MCCOY 54Z ALISON 182B

JDH 117R EQUITY 70Y ET  
MCCOY 25M ALISON 64W  
NJW 100W FOUNDATION 54Z ET  
MCCOY 194L ALISON 16N

BW: 80 lbs				ADJ WW: 532 lbs				ADJ YW: N/A			
CE	BW	WW	YW	MK	TM	MCE	SC	CW	SCF		
1.8	2.9	61.3	96.6	17.6	48.3	1.1	1.2	124.4	21.6		
UDDER	TEAT	MPI	FMI	RFI	PWG	FAT	REA	MARB	CARCASS		
1.4	1.4	140.8	115.8	99	35.3	0.004	0.19	0.10	63.7		

211N is a Compass sired bull that I think we might have underestimated being a younger bull. As he matures, it is easy to recognize the strong masculinity and breed character that this bull will carry into a crossbreeding situation. Buy him with confidence. *Homozygous Polled.*



Lot 96 | McCoy 26G Keystone 149N

96

## McCoy 26G Keystone 149N

C03129048 // ZTM 149N // Mar 4, 2025 // Polled

SHF ALL STAR 42X A191  
**COPPER-T A191 56C VISION 26G**  
COPPER-T 42X 28R CATHERINE 56C

K&B SENTINEL 0042X  
SHF MISS M326 T08 ET  
COPPER-T 171N 36P X-FILE 42X  
REMITALL MARY 28R

RU BA 11X EXCALIBUR 223F  
**PBHR CHRISTINE 48B 94J**  
MIL-WRAY CHRISTINE 48B

TH 71U 719T MR HEREFORD 11X  
RU BA 27A MO-MOOLA 233C  
MEADOW-ACRES CONNECTED 13K 86R  
GLEICH MISS FOURFIRE 136T

BW: 82 lbs				ADJ WW: 593 lbs				ADJ YW: 1052 lbs			
CE	BW	WW	YW	MK	TM	MCE	SC	CW	SCF		
7.6	2.5	51.0	89.8	35.0	60.5	2.1	1.7	81.6	20.8		
UDDER	TEAT	MPI	FMI	RFI	PWG	FAT	REA	MARB	CARCASS		
1.1	1.2	150.3	196.5	105	38.8	0.034	0.02	0.40	68.2		

149N is a long spined, upheaded, dark coloured bull sired by Vision 26G. The Vision daughters have udders that are pretty difficult to beat at our place. *Homozygous Polled.*



Lot 97 | McCoy 26G Nation 206N

97

## McCoy 26G Nation 206N

C03129051 // ZTM 206N // Mar 17, 2025 // Polled

SHF ALL STAR 42X A191  
**COPPER-T A191 56C VISION 26G**  
COPPER-T 42X 28R CATHERINE 56C

K&B SENTINEL 0042X  
SHF MISS M326 T08 ET  
COPPER-T 171N 36P X-FILE 42X  
REMITALL MARY 28R

MCCOY 719T MATRIX ET 30E  
**MCCOY 30E AMBER 128K**  
MCCOY B4551 AMBER 84G

TH 122 711 VICTOR 719T  
MCCOY P20 ZENA 1B  
KCF BENNETT IMPACT B451  
XLP CLF AMBER 91S 22X

BW: 80 lbs				ADJ WW: 618 lbs				ADJ YW: 1199 lbs			
CE	BW	WW	YW	MK	TM	MCE	SC	CW	SCF		
4.5	2.9	49.9	82.7	29.2	54.2	-0.7	1.8	45.2	27.1		
UDDER	TEAT	MPI	FMI	RFI	PWG	FAT	REA	MARB	CARCASS		
1.3	1.3	167.6	138	106	32.8	0.054	0.08	0.28	47.7		

206N carries a sneaky amount of performance in a moderate framed, easy fleshing package. I had to do a double take on the scale when weighing bulls recently. He has gained in the top 25% of the bulls since weaning. 206N will produce easy fleshing, good uddered daughters with the Vision x Matrix combination in his pedigree. *Homozygous Polled.*



## Lot 98 | Revolver 115N

115N comes from a dam and granddam that are two of our top productivity females. We have retained a son of a maternal sister to 115N this year to use in our own heifer pen. Replacement females sired by this guy will definitely be ones to keep. Note that 115N is a twin.  
*Homozygous Polled.*



98

## McCoy 17J Revolver 115N

C03126463 // ZTM 115N // Feb 26, 2025 // Polled // Twin

CHURCHILL BROADWAY 858F  
**MCCOY 858F FORTRESS 17J**  
MCCOY 23D SUSIE 52G

GERBER ANODYNE 001A  
**MCCOY 1A CONNIE 8E**  
MCCOY 70Y CONNIE 65C

SHF YORK 19H Y02  
CHURCHILL LADY 640D  
MCCOY A191 INTEGRITY ET 23D  
MCCOY 53A SUSIE 97E

KCF BENNETT 9126J R294  
GERBER 627S HOLLY 096Y  
JDH 117R EQUITY 70Y ET  
MCCOY 58G CONNIE 70Z

BW: 90 lbs				ADJ WW: 643 lbs				ADJ YW: 1126 lbs			
CE	BW	WW	YW	MK	TM	MCE	SC	CW	SCF	GERBER	
-4.8	5.7	67.0	118.8	28.7	62.2	3.5	1.5	122.8	15.5		
UDDER	TEAT	MPI	FMI	RFI	PWG	FAT	REA	MARB	CARCASS		
1.3	1.4	114.4	198.9	99	51.8	0.054	0.77	0.36	97.3		

99

## McCoy 17G Retro 113N

C03126462 // ZTM 113N // Feb 25, 2025 // Polled (Scur)

CHURCHILL BROADWAY 858F  
**MCCOY 858F FORTRESS 17J**  
MCCOY 23D SUSIE 52G

KCF BENNETT IMPACT B451  
**MCCOY B451 BRANDY 185G**  
MCCOY 105X BRANDY 24B

SHF YORK 19H Y02  
CHURCHILL LADY 640D  
MCCOY A191 INTEGRITY ET 23D  
MCCOY 53A SUSIE 97E

KCF BENNETT REVOLUTION X51  
KCF MISS M326 T56  
MCCOY 58G JACKPOT ET 105X  
HI-DELL 37 BRANDY 29N

BW: 96 lbs				ADJ WW: 654 lbs				ADJ YW: 1157 lbs			
CE	BW	WW	YW	MK	TM	MCE	SC	CW	SCF	GERBER	
-1.3	5.0	58.7	101.9	27.2	56.6	2.2	1.4	60.8	25.6		
UDDER	TEAT	MPI	FMI	RFI	PWG	FAT	REA	MARB	CARCASS		
1.3	1.3	159	116	95	43.2	0.074	0.45	0.13	58.0		

## Lot 99 | Retro 113N

113N will not be a difficult bull to find when you go through our sale offering. He is long bodied, wide topped, great quartered and is a bit wider based than some. His Impact bred dam comes from a strong cow family. His full brother was our first bull in the ring last year.  
*Heterozygous Polled.*







Lot 100 | McCoy 183F Macho 72N

100

McCoy 183F **Macho 72N** {DBC}

C03126199 // ZTM 72N // Feb 11, 2025 // Polled

KCF BENNETT STRATEGY Z303 ET  
**TH MASTERPLAN 183F**  
TH 512X 145Y DOMINETTE 57B

UPS ENDURE 9707  
**MCCOY 9707 KALLA 34K**  
MCCOY 49S KALLA 10D

SCHU-LAR ON TARGET 22S  
KCF MISS REVOLUTION X338 ET  
FTF PROSPECTOR 145Y  
TH 122 71I DOMINETTE 512X ET

NJW 79Z Z311 ENDURE 173D ET  
UPS MISS DOMINO 2502 ET  
MCCOY 55M ABSOLUTE 49S  
MCCOY 31Y KALLA 120B

BW: 102 lbs			ADJ WW: 637 lbs				ADJ YW: 1169 lbs			
CE	BW	WW	YW	MK	TM	MCE	SC	CW	SCF	
-1.7	6.0	75.4	127.2	21.7	59.4	0.7	1.1	142.4	16.5	
UDDER	TEAT	MPI	FMI	RFI	PWG	FAT	REA	MARB	CARCASS	
1.5	1.4	120.1	203.5	98	51.8	0.014	0.83	0.27	95.5	

Masterplan has worked well at our place with 72N being no exception. If you are looking for a soggy, huge middled bull that is a bit darker in colour here is your bull. His granddam, 10D, is the dam of Compass 31H and Journey 28H who was purchased by XTC and Lilybrook. Note that 72N is a DB carrier. *Heterozygous Polled.*



Lot 101 | OSF McCoy Nexus H244 ET 122N

101

OSF McCoy **Nexus H244 ET 122N**

C03124843 // OSF 122N // Jan 22, 2025 // Polled

SHF FORESIGHT B413 F158  
**SHF HODGEMAN F158 H244**  
SHF MAGGIE 001A E109

PCL YUKON R117 ET 49Y  
**PCL 49Y DAHLILA 111E**  
HAROLDSON'S DAHLILA T100 97X

EFBEEF BR VALIDATED B413  
SHF GERBER R117 Y200  
GERBER ANODYNE 001A  
SHF MAGGIE M326 X05 ET

SHF RIB EYE M326 R117  
C&T 122L STARLET 9N  
SHF TAHOE R117 T100  
TLELL 58G SUPER NOVA 4S

BW: 94 lbs			ADJ WW: 562 lbs				ADJ YW: 932 lbs			
CE	BW	WW	YW	MK	TM	MCE	SC	CW	SCF	
0.5	3.7	64.1	110.4	33.1	65.2	2.0	0.9	101.6	18.2	
UDDER	TEAT	MPI	FMI	RFI	PWG	FAT	REA	MARB	CARCASS	
1.2	1.2	131.5	159.9	98	46.3	0.024	0.99	0.28	92.0	

122N is a bull bred for those who want to improve upon Rib Eye Area (top 5%) and Carcass Weight (top 10%). His Donor Dam has produced several impactful herd sires within the breed. *Heterozygous Polled.*



Lot 102 | OSF McCoy National 244 ET 124N

102

OSF McCoy **National 244 ET 124N**

C03124921 // OSF 124N // Jan 24, 2025 // Polled

SHF FORESIGHT B413 F158  
**SHF HODGEMAN F158 H244**  
SHF MAGGIE 001A E109

KCF BENNETT IMPACT B451  
**GHC CS MISS LEGEND ET 2E**  
GHC MISS UNIQUE 25Z

EFBEEF BR VALIDATED B413  
SHF GERBER R117 Y200  
GERBER ANODYNE 001A  
SHF MAGGIE M326 X05 ET

KCF BENNETT REVOLUTION X51  
KCF MISS M326 T56  
BBSF 101N WRANGLER 29W  
GHC MISS NANCY 80P

BW: 95 lbs			ADJ WW: 614 lbs				ADJ YW: 1098 lbs			
CE	BW	WW	YW	MK	TM	MCE	SC	CW	SCF	
3.3	2.1	64.8	108	29.5	61.9	4.1	1.1	109.2	20.5	
UDDER	TEAT	MPI	FMI	RFI	PWG	FAT	REA	MARB	CARCASS	
1.5	1.5	147.8	163	99	43.6	0.044	0.74	0.32	82.3	

124N is a long sided, performance driven Hodgeman son who ranks in the top 15% of the breed for REA and Marbling, his growth post weaning has been impressive. Multiple progeny from this cow family were featured in the recent Crittenden Land and Cattle Dispersal. *Homozygous Polled.*





## McCoy Cattle Co.

Gold Rush is a proven sire that has been used extensively in our program via AI the past couple of years. His progeny are generally darker coloured and shorter marked with extra pigmentation. This sire group will deliver some front end carcass values without sacrificing maternal attributes. This combination is not always so easy to find. *Homozygous Polled.*



Reference SIRE CMF 1720 **Gold Rush 569G ET**  
C03098985 // CMF 569G // Nov 27, 2019 // Polled

CE	BW	WW	YW	MK	TM	MCE	SC	CW	SCF	UDDER	TEAT	MPI	FMI	RFI	PWG	FAT	REA	MARB	CARCASS
9.0	1.1	69.2	103.1	26.2	60.8	-0.1	0.8	87.6	29.5	1.5	1.4	191.3	218.7	71	33.9	0.054	0.74	0.76	108.4

### Lot 103 | Dominion 12N

12N is a front end Gold Rush son that has been a favourite all year. This fellow has extra capacity and width of base from one end to the other. He will be able to breed heifers yet still sire replacement females and steers with power that will be the envy of the neighbours.

**Recommended for heifers**  
*Homozygous Polled.*



103

### McCoy 569G **Dominion 12N**

C03124957 // ZTM 12N // Jan 25, 2025 // Polled

BW: 68 lbs					ADJ WW: 603 lbs					ADJ YW: 1120 lbs				
CE	BW	WW	YW	MK	TM	MCE	SC	CW	SCF	UDDER	TEAT	MPI	FMI	RFI
11.9	-0.9	59.8	85.1	26.3	56.2	1.7	1.14	71.2	30.9	1.5	1.5	200.4	163.6	88
UDDER	TEAT	MPI	FMI	RFI	PWG	FAT	REA	MARB	CARCASS					
1.5	1.5	200.4	163.6	88	25.3	0.034	0.47	0.59	79.2					

NJW 79Z Z311 ENDURE 173D ET  
**CMF 1720 GOLD RUSH 569G ET**  
L III TFL C609 VICTORIA 1720

MOHICAN THM EXCEDE Z426  
**MCCOY Z426 SUE 21L**  
MCCOY 88838 SUE 203J

KCF BENNETT ENCORE Z311 ET  
BW 91H 100W RITA 79Z ET  
EFBEEF RESOLUTE CEO  
L III X651 RITA A045

TH 133U 719T UPGRADE 69X  
NJW M326 UNFORGETTABLE 76W ET  
/S MANDATE 88838  
MCCOY 2D SUE 32F

HEREFORD YEARLING BULLS // MCCOY CATTLE CO.





Lot 104 | McCoy 569G Frontline 27N

104

## McCoy 569G Frontline 27N

C03125018 // ZTM 27N // Jan 30, 2025 // Polled

NJW 79Z Z311 ENDURE 173D ET  
**CMF 1720 GOLD RUSH 569G ET**  
L III TFL C609 VICTORIA 1720

KCF BENNETT ENCORE Z311 ET  
BW 91H 100W RITA 79Z ET  
EFBEEF RESOLUTE CEO  
L III X651 RITA A045

HILLS-GALORE 44Z REWIND 147E  
**MCCOY 147E ZENA 24K**  
MCCOY 70Y ZENA 143D

RST X51 REVOLUTION 410Z  
HILLS-GALORE 52R CALLI 44Z  
JDH 117R EQUITY 70Y ET  
MCCOY 23U ZENA 142Z

BW: 85 lbs			ADJ WW: 642 lbs			ADJ YW: 1129 lbs		
CE	BW	WW	YW	MK	TM	MCE	SC	CW
7.0	2.5	68.4	106.2	26.0	60.2	5.1	0.74	82.8
UDDER	TEAT	MPI	FMI	RFI	PWG	FAT	REA	MARB
1.3	1.4	160.9	150.3	88	37.8	0.054	0.75	0.32
			CARCASS					
			105.7					

27N is a herd sire prospect that has always had a special presence about him. His dam, 24K, is held in very high regard at this early point in her life, carrying ideal structure, udder quality, and fleshing ability. *Heterozygous Polled.*



Lot 105 | McCoy 569G Ovation 78N

105

## McCoy 569G Ovation 78N

C03126454 // ZTM 78N // Feb 12, 2025 // Polled

NJW 79Z Z311 ENDURE 173D ET  
**CMF 1720 GOLD RUSH 569G ET**  
L III TFL C609 VICTORIA 1720

KCF BENNETT ENCORE Z311 ET  
BW 91H 100W RITA 79Z ET  
EFBEEF RESOLUTE CEO  
L III X651 RITA A045

MCCOY 858F FORTRESS 17J  
**MCCOY 17J REAL LADY 161L**  
MCCOY 8Y REAL LADY ET 44E

CHURCHILL BROADWAY 858F  
MCCOY 23D SUSIE 52G  
NJW 73S W18 HOMEGROWN 8Y ET  
PCL REAL LADY 10H 5T

BW: 70 lbs			ADJ WW: 616 lbs			ADJ YW: 1125 lbs		
CE	BW	WW	YW	MK	TM	MCE	SC	CW
6.5	2.8	64.7	101.6	29.5	61.9	1.4	1.0	96.4
UDDER	TEAT	MPI	FMI	RFI	PWG	FAT	REA	MARB
1.5	1.4	148.7	189.6	84	36.9	0.094	0.79	0.59
			CARCASS					
			104.8					

78N is an interesting herd sire prospect. Moderate birth weight, maternal power, and breed leading carcass all rolled into one package. To top it off he is goggled eyed and super short marked. Make sure you look him up on sale day. *Homozygous Polled.*



Lot 106 | McCoy 569G Northstar 24N

106

## McCoy 569G Northstar 24N

C03125017 // ZTM 24N // Jan 29, 2025 // Polled

NJW 79Z Z311 ENDURE 173D ET  
**CMF 1720 GOLD RUSH 569G ET**  
L III TFL C609 VICTORIA 1720

KCF BENNETT ENCORE Z311 ET  
BW 91H 100W RITA 79Z ET  
EFBEEF RESOLUTE CEO  
L III X651 RITA A045

MCCOY 70Y SKYFALL 53A  
**MCCOY 53A OLIVIA 120F**  
TWIN-VIEW 39S OLIVIA 8Y

JDH 117R EQUITY 70Y ET  
MCCOY 25M ALISON 64W  
GHC SPOT LIGHT 39S  
JAC LADY GRAYSON 11U

BW: 94 lbs			ADJ WW: 584 lbs			ADJ YW: 1131 lbs		
CE	BW	WW	YW	MK	TM	MCE	SC	CW
1.7	4.1	66.4	102.5	28.5	61.7	0.3	1.2	97.1
UDDER	TEAT	MPI	FMI	RFI	PWG	FAT	REA	MARB
1.3	1.3	157.2	159.1	90	36.1	0.034	0.83	0.30
			CARCASS					
			97.3					

Gold Rush left a strong group of calves at our place in both sexes. 24N is no exception. He is one of the higher growth, longer bodied, bigger framed bulls in our offering this year. Carcass values well above breed average for both REA and Marbling come with this fellow. His dam is a maternal sister to 89N, Lot 108. *Homozygous Polled.*



## Lot 107 | Hawkeye 34N

34N is an intriguing Gold Rush son that puts a lot together. He is a homo polled, short-marked and goggle eyed bull. He is a negative BW bull with a yearling EPD over 100. He also carries breed leading calving ease and carcass attributes (especially marbling). Definitely a breeding tool for the right cattleman.

**Recommended for heifers**  
Homozygous Polled.



107

McCoy 569G **Hawkeye 34N**  
C03125321 // ZTM 34N // Feb 1, 2025 // Polled

NJW 79Z Z311 ENDURE 173D ET  
**CMF 1720 GOLD RUSH 569G ET**  
L III TFL C609 VICTORIA 1720

KCF BENNETT CATALYST H472  
**MCCOY H472 CONNIE 139L**  
MCCOY 147E CONNIE 21H

KCF BENNETT ENCORE Z311 ET  
BW 91H 100W RITA 79Z ET  
EFBEEF RESOLUTE CEO  
L III X651 RITA A045

KCF BENNETT HOMEWARD C776  
KCF MISS RED BULL D366  
HILLS-GALORE 44Z REWIND 147E  
MCCOY 70Y CONNIE 76D

BW: 66 lbs			ADJ WW: 630 lbs			ADJ YW: 1072 lbs			GEEPD
CE	BW	WW	YW	MK	TM	MCE	SC	CW	
12.4	-0.8	65.6	103.7	32.6	65.4	4.1	1.6	93.2	
UDDER	TEAT	MPI	FMI	RFI	PWG	FAT	REA	MARB	
1.4	1.5	198.6	209.9	80	38.1	0.064	0.55	0.64	92.8

108

McCoy 569G **Platinum 89N**  
C03129040 // ZTM 89N // Feb 16, 2025 // Polled

NJW 79Z Z311 ENDURE 173D ET  
**CMF 1720 GOLD RUSH 569G ET**  
L III TFL C609 VICTORIA 1720

KCF BENNETT IMPACT B451  
**MCCOY B451 OLIVIA 138G**  
TWIN-VIEW 39S OLIVIA 8Y

KCF BENNETT ENCORE Z311 ET  
BW 91H 100W RITA 79Z ET  
EFBEEF RESOLUTE CEO  
L III X651 RITA A045

KCF BENNETT REVOLUTION X51  
KCF MISS M326 T56  
GHC SPOT LIGHT 39S  
JAC LADY GRAYSON 11U

BW: 100 lbs			ADJ WW: 600 lbs			ADJ YW: 1120 lbs			GEEPD
CE	BW	WW	YW	MK	TM	MCE	SC	CW	
3.2	3.7	63.9	103.7	35.3	67.3	2.5	0.8	64.6	
UDDER	TEAT	MPI	FMI	RFI	PWG	FAT	REA	MARB	
1.3	1.3	187.6	186.0	81	39.8	0.054	0.55	0.55	91.8

## Lot 108 | Platinum 89N

89N has been a Gold Rush son that has been easy to find throughout the year at MCC. His dam, 138G, has been a solid producer thus far for us. 89N's maternal brother sold to Chinook Ranch in last year's sale. *Heterozygous Polled.*







Lot 109 | McCoy 54 Ponderosa 91N

109

## McCoy 54 Ponderosa 91N

C03126458 // ZTM 91N // Feb 17, 2025 // Polled

/S MANDATE 66589 ET  
**/S MOMENTUM 00054 ET**  
 /S LADY HOMETOWN 5364C ET

KCF BENNETT CATALYST H472  
**MCCOY H472 SUSIE 252L**  
 MCCOY 70Y SUSIE 55D

R LEADER 6964  
 /S LADY DOMINO 0158X  
 NJW 73S W18 HOMETOWN 10Y ET  
 /S LADY DOMINO 424P

KCF BENNETT HOMEWARD C776  
 KCF MISS RED BULL D366  
 JDH 117R EQUITY 70Y ET  
 MCCOY 23U SUSIE 154Z

BW: 78 lbs			ADJ WW: 675 lbs			ADJ YW: 1151 lbs			
CE	BW	WW	YW	MK	TM	MCE	SC	CW	SCF
10.6	-0.4	63.2	93.4	29.4	61.0	4.9	1.4	68.8	25.8
UDDER	TEAT	MPI	FMI	RFI	PWG	FAT	REA	MARB	CARCASS
1.3	1.4	183.1	142.3	98	30.2	0.084	0.36	0.36	73.6

91N is a long sided, well-balanced Momentum son coming from one of the foundation cow families at McCoy Cattle Co. His granddam, 55D, weaned our top heifer calf in 2025 and expect she has plenty of gas left in the tank.

**Recommended for heifers** Heterozygous Polled.



Lot 110 | McCoy 54 Decathalon 105N

110

## McCoy 54 Decathalon 105N

C03129042 // ZTM 105N // Feb 22, 2025 // Polled

/S MANDATE 66589 ET  
**/S MOMENTUM 00054 ET**  
 /S LADY HOMETOWN 5364C ET

TH MASTERPLAN 183F  
**MCCOY 183F MELISSA 49L**  
 MCCOY 858F MELISSA 18J

R LEADER 6964  
 /S LADY DOMINO 0158X  
 NJW 73S W18 HOMETOWN 10Y ET  
 /S LADY DOMINO 424P

KCF BENNETT STRATEGY Z303 ET  
 TH 512X 145Y DOMINETTE 57B  
 CHURCHILL BROADWAY 858F  
 MCCOY B451 MELISSA 246G

BW: 84 lbs			ADJ WW: 591 lbs			ADJ YW: 1033 lbs			
CE	BW	WW	YW	MK	TM	MCE	SC	CW	SCF
5.8	-0.1	58.6	89.7	25.3	54.6	0.6	1.8	76.8	25.6
UDDER	TEAT	MPI	FMI	RFI	PWG	FAT	REA	MARB	CARCASS
1.6	1.7	166.2	152.4	93	31.1	0.054	0.22	0.46	67.0

105N will be a great choice to put with a group of heifers. His dam and granddam were two of the top scanning females we have ever ultrasounded from a marbling perspective. Use this guy to take white off and add extra pigment.

**Recommended for heifers** Homozygous Polled.



Lot 111 | McCoy 54 Congress 97N

111

## McCoy 54 Congress 97N

C03129041 // ZTM 97N // Feb 20, 2025 // Polled

/S MANDATE 66589 ET  
**/S MOMENTUM 00054 ET**  
 /S LADY HOMETOWN 5364C ET

MCCOY 88838 HELIX 29J  
**MCCOY 29J REAL LADY 87L**  
 MCCOY R4EAL LADY ET 23E

R LEADER 6964  
 /S LADY DOMINO 0158X  
 NJW 73S W18 HOMETOWN 10Y ET  
 /S LADY DOMINO 424P

/S MANDATE 88838  
 MCCOY 70Y ALISON 111D  
 PCL HOMEGROWN BALANCE 8Y 33B  
 PCL REAL LADY 10H 5T

BW: 56 lbs			ADJ WW: 545 lbs			ADJ YW: 1013 lbs			
CE	BW	WW	YW	MK	TM	MCE	SC	CW	SCF
13.9	-3.4	42.1	61.5	29.1	50.2	7.5	0.9	55.1	24.1
UDDER	TEAT	MPI	FMI	RFI	PWG	FAT	REA	MARB	CARCASS
1.5	1.5	176.9	85.8	90	19.4	0.084	0.42	0.21	59.9

97N started a bit small as we think he came a bit early but has continued to progress right since day one. He is a well-balanced calving ease prospect that will do a lot right in your heifer pen. Great set of numbers across the board on this guy.

**Recommended for heifers** Homozygous Polled.



## Lot 112 | Access 1N

1N is a short marked, dark coloured Horizon son that has been easy to find all summer. He comes with extreme calving ease but still posting an ADG in the top 5 bulls in the pen from weaning until early January. The Horizon females have consistently displayed breed leading udder quality, both in terms of teat size and suspension.

**Recommended for heifers**  
Homozygous Polled.



# 112

McCoy H022 **Access 1N**

C03129035 // ZTM 1N // Jan 14, 2025 // Polled

SHF DAYBREAK Y02 D287 ET  
**SHF HORIZON D287 H022 ET**  
SHF TIME 001A D8

MCCOY 88838 MILESTONE 7J  
**MCCOY 7J MELISSA 94L**  
MCCOY 351E MELISSA 270H

SHF YORK 19H Y02  
SHF MISS M326 T08 ET  
GERBER ANODYNE 001A  
SHF TIME 42X A140

/S MANDATE 88838  
MCCOY 53A KALLA 71E  
CMF 20X EBY 351E  
MCCOY B451 MELISSA 88E

BW: 62 lbs			ADJ WW: 615 lbs			ADJ YW: 1162 lbs			GEPD
CE	BW	WW	YW	MK	TM	MCE	SC	CW	
9.2	-0.2	62.2	106.8	32.8	63.9	2.2	1.5	125.0	
UDDER	TEAT	MPI	FMI	RFI	PWG	FAT	REA	MARB	
1.3	1.3	168.5	168.7	90	44.6	0.004	0.72	0.14	84.5

# 113

McCoy H022 **Hindsight 51N**

C03129039 // ZTM 51N // Feb 6, 2025 // Polled

SHF DAYBREAK Y02 D287 ET  
**SHF HORIZON D287 H022 ET**  
SHF TIME 001A D8

MCCOY 81E WESTERN 35J  
**MCCOY 35J TRISHA 88L**  
MCCOY 30E TRISHA 294J

SHF YORK 19H Y02  
SHF MISS M326 T08 ET  
GERBER ANODYNE 001A  
SHF TIME 42X A140

NJW 160B 028X HISTORIC 81E ET  
MCCOY 23D REAL LADY 101G  
MCCOY 719T MATRIX ET 30E  
MCCOY 1A TRISHA 9E

BW: 70 lbs			ADJ WW: 590 lbs			ADJ YW: 1073 lbs			GEPD
CE	BW	WW	YW	MK	TM	MCE	SC	CW	
16.0	-2.4	55.8	87.7	38.4	66.3	6.4	1.0	89.9	
UDDER	TEAT	MPI	FMI	RFI	PWG	FAT	REA	MARB	
1.5	1.6	178.1	183.3	104	31.9	0.034	0.65	0.33	68.4

## Lot 113 | Hindsight 51N

51N will be a no miss calving ease bull being sired by SHF Horizon and out of an excellent first calve daughter of Western 35J. 51N is a long bodied, attractive marked bull that exhibits more muscle and hip than some of the calving ease focused bulls.

**Recommended for heifers**  
Homozygous Polled.







Lot 114 | OSF McCoy H022 Nash 121N

114

OSF McCoy H022 Nash 121N

C03124549 // OSF 121N // Jan 21, 2025 // Polled

SHF DAYBREAK Y02 D287 ET  
**SHF HORIZON D287 H022 ET**  
SHF TIME 001A D8

SHF ALL STAR 42X A19  
**OSF JADE A191 ET 210H**  
PCL JADE 118U 93B

SHF YORK 19H Y02  
SHF MISS M326 T08 ET  
GERBER ANODYNE 001A  
SHF TIME 42X A140

K&B SENTINEL 0042X  
SHF MISS M326 T08 ET  
MHPH 101S UMPIRE 118U  
PCL JADE ET 10S

BW: 72 lbs			ADJ WW: 573 lbs			ADJ YW: 928 lbs			
CE	BW	WW	YW	MK	TM	MCE	SC	CW	SCF
8.2	-0.4	54.3	90.0	32.5	59.7	4.0	1.3	112.7	24.0
UDDER	TEAT	MPI	FMI	RFI	PWG	FAT	REA	MARB	CARCASS
1.4	1.4	166.3	156.1	96	35.7	0.004	0.53	0.27	71.0

121N is a sleep easy heifer bull who ranks near the top of the breed for birthweight and calving ease. His moderate framed dam has been consistent in production.

**Recommended for heifers**  
Homozygous Polled.



Kalla and Gary at Agribition



Megan was a member of Team Canada at the World Hereford Conference, Young Breeders Competition, in Kansas this past October.



Carrie and Tate at Agribition







## McCoy Cattle Co.

Reference  
SIRE

### McCoy 81E Western 35J

C03084025 // ZTM 35J // Feb 6, 2021 // Polled

CE	BW	WW	YW	MK	TM	MCE	SC
17.4	-3.3	43.8	54.9	39.4	61.3	7.2	0.9
CW	SCF	UDDER	TEAT	MPI	FMI	RFI	PWG
63.1	25.3	1.4	1.5	189.4	118.5	96	11.1
FAT	REA	MARB	CARCASS				
0.084	0.46	0.16	62.0				

We are proud to offer another strong group of Western bulls in our 2026 sale. They are a moderate framed, easy fleshing bunch that will deliver as much calving ease to your heifer pen as any sire we have ever used. His first daughters calved in 2025. Teat size, udder structure, and milk flow all seem to be pointing in the right direction at this point. Use his sons with confidence.

*Homozygous Polled.*



McCoy 81E Western 35J

115

### McCoy 35J Laser 156N

C03129049 // ZTM 156N // Mar 6, 2025 // Polled (Scur)

NJW 160B 028X HISTORIC 81E ET  
**MCCOY 81E WESTERN 35J**  
MCCOY 23D REAL LADY 101G

CHURCHILL SENSATION 028X  
NJW 73S 38W DAYDREAM 160B  
MCCOY A191 INTEGRITY ET 23D  
MCCOY 8Y REAL LADY ET 44E

/S MOMENTUM 00054 ET  
**MCCOY 54 DAHLIA 41L**  
MCCOY 2426 DAHLIA 45J

/S MANDATE 66589 ET  
/S LADY HOMETOWN 5364C ET  
MOHICAN THM EXCEDE Z426  
MCCOY B451 DAHLIA 72E

BW: 76 lbs				ADJ WW: 576 lbs				ADJ YW: 1084 lbs			
CE	BW	WW	YW	MK	TM	MCE	SC	CW	SCF	UDDER	TEAT
16.6	-3.0	49.5	65.1	37.7	62.5	3.9	1.5	72.9	28.3	1.6	1.7
MPI	FMI	RFI	PWG	FAT	REA	MARB	CARCASS				
197.3	120.6	94	15.6	0.064	0.26	0.19	57.4				

156N is a triple bred calving ease bull with Western, Momentum, and Excede all showing up front in his pedigree. A 16.6 calving ease EPD at the time this book is being written will make calving heifers a pleasure. *Heterozygous Polled.*

**Recommended for heifers**



Lot 115 | McCoy 35J Laser 156N

116

### McCoy 35J Acclaim 2N

C03129036 // ZTM 2N // Jan 15, 2025 // Polled

NJW 160B 028X HISTORIC 81E ET  
**MCCOY 81E WESTERN 35J**  
MCCOY 23D REAL LADY 101G

CHURCHILL SENSATION 028X  
NJW 73S 38W DAYDREAM 160B  
MCCOY A191 INTEGRITY ET 23D  
MCCOY 8Y REAL LADY ET 44E

MCCOY 88838 HELIX 29J  
**MCCOY 29J ALISON 64L**  
MCCOY 269B ALISON 47E

/S MANDATE 66589 ET  
MCCOY 70Y ALISON 111D  
SHF BUILDER 20Z B269  
MCCOY 31Y ALISON 155C

BW: 60 lbs				ADJ WW: 644 lbs				ADJ YW: 1069 lbs			
CE	BW	WW	YW	MK	TM	MCE	SC	CW	SCF	UDDER	TEAT
13.3	-1.7	50.3	75.8	36.8	62.0	5.3	1.0	72.4	16.9	1.3	1.5
MPI	FMI	RFI	PWG	FAT	REA	MARB	CARCASS				
145.8	101.3	96	25.5	0.064	0.40	-0.02	72.4				

2N is a top quality, well-balanced Western son that has been a favourite of Carrie's since early in life. Great calving ease comes with this fellow in addition to the ability to leave some great replacement females. *Homozygous Polled.*

**Recommended for heifers**



Lot 116 | McCoy 35J Acclaim 2N





Lot 117 | McCoy 35J Apprentice 35N

117

## McCoy 35J Apprentice 35N

C03129038 // ZTM 35N // Feb 1, 2025 // Polled

NJW 160B 028X HISTORIC 81E ET  
**MCCOY 81E WESTERN 35J**  
MCCOY 23D REAL LADY 101G

/S MOMENTUM 00054 ET  
**MCCOY 54 NOLA 33L**  
MCCOY 30E NOLA 94J

CHURCHILL SENSATION 028X  
NJW 73S 38W DAYDREAM 160B  
MCCOY A191 INTEGRITY ET 23D  
MCCOY 8Y REAL LADY ET 44E

/S MANDATE 66589 ET  
/S LADY HOMETOWN 5364C ET  
MCCOY 719T MATRIX ET 30E  
MCCOY 53A NOLA 148G

BW: 62 lbs			ADJ WW: 537 lbs			ADJ YW: 977 lbs		
CE	BW	WW	YW	MK	TM	MCE	SC	CW
16.4	-3.7	42.3	57.7	37.6	58.8	5.3	0.9	66.5
UDDER	TEAT	MPI	FMI	RFI	PWG	FAT	REA	MARB
1.4	1.5	171.3	116.6	87	15.4	0.034	0.33	0.17
						SCF		
						22.3		
						56.2		

35N is another triple bred calving ease prospect with the first 3 sires in his pedigree being bulls that have led our calving ease program over the last decade. His dam is a goggle eyed Momentum daughter so look for him to sire shorter marked progeny. **Recommended for heifers** Homozygous Polled.

118

## McCoy 35J Clutch 94N

C03129233 // ZTM 94N // Feb 18, 2025 // Polled (Scur)

NJW 160B 028X HISTORIC 81E ET  
**MCCOY 81E WESTERN 35J**  
MCCOY 23D REAL LADY 101G

/S MOMENTUM 00054 ET  
**MCCOY 54 ZENA 194L**  
MCCOY 81E ZENA 40J

CHURCHILL SENSATION 028X  
NJW 73S 38W DAYDREAM 160B  
MCCOY A191 INTEGRITY ET 23D  
MCCOY 8Y REAL LADY ET 44E

/S MANDATE 66589 ET  
/S LADY HOMETOWN 5364C ET  
NJW 160B 028X HISTORIC 81E ET  
MCCOY 53A ZENA 82G

BW: 62 lbs			ADJ WW: 570 lbs			ADJ YW: 1016 lbs		
CE	BW	WW	YW	MK	TM	MCE	SC	CW
16.9	-3.9	47.2	62.0	38.0	61.6	6.0	1.2	68.6
UDDER	TEAT	MPI	FMI	RFI	PWG	FAT	REA	MARB
1.4	1.5	187.1	109.1	-	14.8	0.084	0.59	0.20
						SCF		
						25.2		
						72.2		

Western x Momentum x Historic equals calving ease through and through 94N's pedigree. He boasts a plus 17.0 calving ease EPD. They don't get much better in the Hereford breed. **Recommended for heifers** Heterozygous Polled.

119

## McCoy 35J Action 29N

C03129037 // ZTM 29N // Jan 31, 2025 // Polled (Scur)

NJW 160B 028X HISTORIC 81E ET  
**MCCOY 81E WESTERN 35J**  
MCCOY 23D REAL LADY 101G

/S MOMENTUM 00054 ET  
**MCCOY 54 MELISSA 140L**  
MCCOY 30E MELISSA 298J

CHURCHILL SENSATION 028X  
NJW 73S 38W DAYDREAM 160B  
MCCOY A191 INTEGRITY ET 23D  
MCCOY 8Y REAL LADY ET 44E

/S MANDATE 66589 ET  
/S LADY HOMETOWN 5364C ET  
MCCOY 719T MATRIX ET 30E  
MCCOY 5Z MELISSA 64B

BW: 77 lbs			ADJ WW: 488 lbs			ADJ YW: 1006 lbs		
CE	BW	WW	YW	MK	TM	MCE	SC	CW
7.5	-0.5	51.1	73.4	38.5	64.1	-1.6	1.2	85.8
UDDER	TEAT	MPI	FMI	RFI	PWG	FAT	REA	MARB
1.4	1.5	151.4	102.5	98	22.3	0.034	0.23	-0.12
						SCF		
						22.6		
						62.6		

29N is a calving ease focused prospect that catches my eye a bit more every time I see him. He is an above average gainer post weaning that carries extra thickness over his top and down through his hind quarter. **Heterozygous Polled.**

**Recommended for heifers**



Lot 119 | McCoy 35J Action 29N



120

McCoy 901 **Kaboom 64N**

C03125327 // ZTM 64N // Feb 9, 2025 // Polled

TH 22R 16S LAMBEAU 17Y  
**CSC 701 BOLDER 901**  
 CSC 502 LADY DEW 701

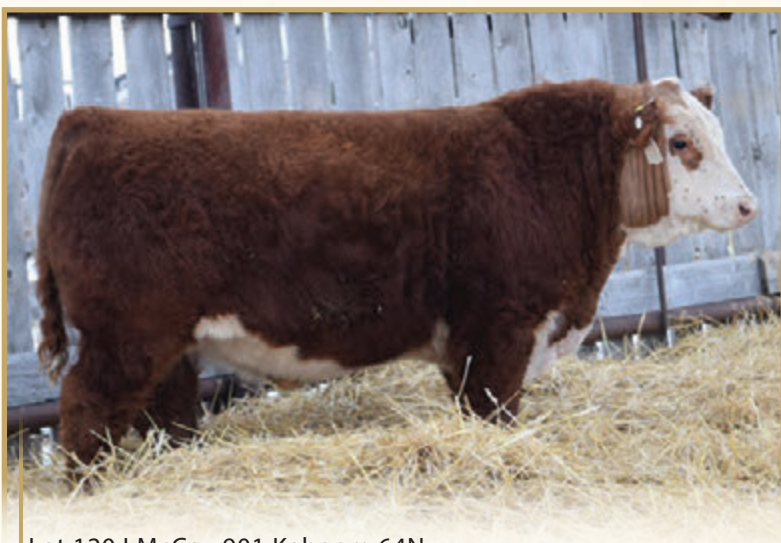
TH 121L 63N TUNDRA 16S  
 TH 62N 3L KELSEY 22R  
 CHURCHILL SENSATION 028X  
 CSC 10Y LADY DEW 502 ET

KCF BENNETT CATALYST H472  
**MCCOY H472 CONNIE 223L**  
 MCCOY 70Y CONNIE 87A

KCF BENNETT HOMEWARD C776  
 KCF MISS RED BULL D366  
 JDH 117R EQUITY 70Y ET  
 MCCOY 30N CONNIE 3W

BW: 62 lbs			ADJ WW: 584 lbs				ADJ YW: 1038 lbs			
CE	BW	WW	YW	MK	TM	MCE	SC	CW	SCF	
15.1	-2.2	51.6	81.9	31.7	57.5	5.9	1.7	57.4	26.8	
UDDER	TEAT	MPI	FMI	RFI	PWG	FAT	REA	MARB	CARCASS	
1.4	1.6	192.1	128.6	92	30.3	0.064	0.42	0.13	64.8	

64N is a super stout, easy fleshing son of Bolder that won't be difficult to locate on sale day. His young Catalyst dam did a great job on her first effort. The Catalyst daughters produced in such a noticeable way in 2025 that we intend to go back use him heavier in 2026. 64N's Granddam was a long lived brood cow in our herd that produced a lead off bull or two in her time. **Recommended for heifers** Homozygous Polled.



Lot 120 | McCoy 901 Kaboom 64N

121

McCoy 901 **Bedrock 11N**

C03129233 // ZTM 11N // Jan 24, 2025 // Polled

TH 22R 16S LAMBEAU 17Y  
**CSC 701 BOLDER 901**  
 CSC 502 LADY DEW 701

TH 121L 63N TUNDRA 16S  
 TH 62N 3L KELSEY 22R  
 CHURCHILL SENSATION 028X  
 CSC 10Y LADY DEW 502 ET

MCCOY 88838 MILESTONE 7J  
**MCCOY 7J MELISSA 83L**  
 MCCOY 100E MELISSA ET 62G

/S MANDATE 88838  
 MCCOY 53A KALLA 71E  
 NJW 73S 456B POWER UP 100E ET  
 MCCOY 25M MELISSA 125W

BW: 70 lbs			ADJ WW: 526 lbs				ADJ YW: 940 lbs			
CE	BW	WW	YW	MK	TM	MCE	SC	CW	SCF	
9.8	1.0	51.9	92.0	22.0	48.0	2.3	1.0	103.6	26.8	
UDDER	TEAT	MPI	FMI	RFI	PWG	FAT	REA	MARB	CARCASS	
1.4	1.5	175.6	163.2	97	40.1	0.004	0.50	0.10	69.7	

11N is a dark coloured, short marked, heavily pigmented son of Bolder 901. He will make calving heifers a non-event. **Recommended for heifers** Homozygous Polled.



Lot 121 | McCoy 901 Bedrock 11N

122

McCoy 901 **Deuce 38N**

C03125323 // ZTM 38N // Feb 2, 2025 // Polled (Scur)

TH 22R 16S LAMBEAU 17Y  
**CSC 701 BOLDER 901**  
 CSC 502 LADY DEW 701

TH 121L 63N TUNDRA 16S  
 TH 62N 3L KELSEY 22R  
 CHURCHILL SENSATION 028X  
 CSC 10Y LADY DEW 502 ET

/S MOMENTUM 00054 ET  
**MCCOY 54 CONNIE 112L**  
 MCCOY 8F CONNIE 72J

/S MANDATE 66589 ET  
 /S LADY HOMETOWN 5364C ET  
 MCCOY Z426 LEONARD 8F  
 MCCOY 30E CONNIE 161G

BW: 66 lbs			ADJ WW: 560 lbs				ADJ YW: 1049 lbs			
CE	BW	WW	YW	MK	TM	MCE	SC	CW	SCF	
15.0	-2.5	50.0	77.2	37.1	62.1	1.0	1.7	45.2	25.0	
UDDER	TEAT	MPI	FMI	RFI	PWG	FAT	REA	MARB	CARCASS	
1.5	1.6	178.0	126.8	99	27.2	0.084	0.04	0.17	61.0	

This Bolder son is simply a well balanced bull that will go out and get the job done. His young dam is a moderate sized female with excellent udder structure. Our lead off calving ease bull last year was a maternal brother to 38N's dam so there is big time calving ease throughout his pedigree. The Bolder sons should sire progeny that don't carry much white if you care about that sort of thing. **Recommended for heifers** Heterozygous Polled.



Lot 122 | McCoy 901 Deuce 38N



Lot 123

# F1 HEREFORD *Females* x GELBVIEH

Wow. This is already the 10th year we have offered our F1 Hereford x Gelbvieh open heifers through the bull sale. Time flies when you are having fun. We continue to be very pleased with how these females have produced for those that have bought them. We are excited about this breeding program going forward as have fine tuned our Gelbvieh breeding program recently and are starting to see the benefit of that renewed focus. We are offering 9 groups of 3 heifers in 2026. All heifers have been vaccinated with Vista Once SQ and Vision 8 in the spring and fall of 2025 and have received both Ivermectin and Clean-Up. All heifers are pregnancy checked to be open.



A

B

C

D

E

F

G

H

I







# SaskAgMatters Mental Health Network Inc.

[www.saskagmatters.ca](http://www.saskagmatters.ca)

Raffle fundraiser: All funds raised go directly to pay for SK producers, their family members, and their employees to receive six hours of free counselling annually

1st Prize: \$7500  
2nd Prize: \$5000

**Ticket Price: \$20**



## **DRAW DETAILS:**

**DATE:** February 25, 2026 at 2:00 p.m. (CST)

**LOCATION:** Beck Farms & McCoy Cattle 17th Annual Bull Sale (watch draw live on DLMS)

***Only 3000 tickets available!***

**TO PURCHASE:** Text or call Alecia (306-539-4213) or Cynthia (306-436-7354)

**PAYMENT OPTIONS:** E-transfer or cash accepted  
*Send etransfers to: [saskagmattersnetwork@gmail.com](mailto:saskagmattersnetwork@gmail.com)*

## **TERMS & CONDITIONS**

Winner will be contacted by phone. By playing, you consent to having your name and photo published on our website and social media.

Lottery License # RR25-0468

Thank you for supporting mental health in agriculture!

If you or someone you know could use some support to manage the challenges that farming throws at you, please check out the website and contact one of the mental health professionals listed. [www.saskagmatters.ca](http://www.saskagmatters.ca)

National Farmer Crisis Line:  
1-866-FARMS01 (1-866-327-6701)  
\*Free and available to anyone 12 years and older





## TERMS & CONDITIONS

**Terms...** The terms of the sale are cash or cheque, payable at par at the sale location. The right of property shall not pass until after settlement has been made; no invoicing on buyers in attendance unless previous arrangements have been made. Every animal sells to the highest bidder and in cases of disputes the auctioneer's decision will be final.

**Announcements** from the auction block will take precedence over the printed matter in the catalogue. Current exchange rates will be announced sale day. All monies are in Canadian funds.

**Certificate of Registration...** Each animal will carry papers issued by the applicable breed association. A certificate of registry duly transferred will be furnished to the buyer for each animal after payment has been made.

**Health...** All animals in the sale have met all necessary health requirements.

**Guarantee...** Each animal becomes the purchaser's risk immediately after the animal is sold. All animals in this sale will be sold under the terms and guarantees set forth by the applicable breed association with regards to health, freedom from defects and from both reproductive and specific genetic unsoundness.

**Delivery...** Assistance will be given in getting your purchases home. Each animal becomes the risk of the purchaser as soon as sold.

**Liabilities...** All persons attend the sale at their own risk. The sellers, facility owner and auctioneer assume no liability, legal or otherwise, for any accidents that occur. The buyer must look to the seller for fulfillment of all guarantees and representations made here under.

**Phone, Mail, Wire Bids...** Bidders unable to attend the sale may phone, wire or mail their bids and instructions to the auctioneer or special representatives. Bids must be received in sufficient time prior to the sale.

**Insurance...** Agents will be in attendance to insure your purchases. We strongly recommend that insurance is purchased for full value.

**Errors...** All announcements at sale time, written or oral, supercede any written material in the catalogue.





Return Undeliverable  
Canadian Addresses to:

McCoy Cattle Co.  
Box 479  
Milestone, SK  
S0G 3L0



# 17<sup>th</sup> BULL SALE

Beck Farms  
McCoy Cattle Co.



catalogue created by 14 West Creations