A scenic landscape featuring a river or lake in the foreground. The background is filled with trees, some of which have autumn-colored foliage in shades of orange and yellow. Two dark-colored cows are grazing on the riverbank. The overall atmosphere is peaceful and natural.

CANADIAN ANGUS FOUNDATION'S
BUILDING 14
the **LEGACY**

THURSDAY, JUNE 25, 2026, KAMLOOPS, BC
LIVE SALE 7:00 P.M. PDT.

TIMED AUCTION CLOSING FOLLOWING LIVE SALE

BUILDING *the* LEGACY 14

Hybrid and Live Sale
Thursday, June 25, 2026 • 7:00 PM
BC Livestock Co-op • Kamloops, BC

June 25 Schedule of Events

- 12:00 PM Lunch at Coast Hotel
- 12:30 PM Junior Ambassador speeches at Coast Hotel
- 1:15 PM Canadian Angus Association Annual General Meeting at Coast Hotel
- 2:15 PM Canadian Angus Foundation Annual General Meeting at Coast Hotel
- 3:30 PM Buses leave for BC Livestock Co-op Breeder Displays
Entertainment by Hugh McLennan
Dinner
- 7:00 PM Building the Legacy Auction



Chad Lorenz CHAIR, CANADIAN ANGUS FOUNDATION

It is with both pride and gratitude that we present Building the Legacy 14. Our Canadian Angus Foundation board of directors are very humbled by the generosity that is put forth each and every year to make this event the success that it has grown into. It is impossible to maintain something of this nature without the support of the breeders, businesses and individuals that contribute to the offering. The intention, is that your support goes toward the greater good of our youth and

education and allows the Foundation to be a good steward of our history and archives. I believe that those sitting at the table when the CAF was established had the foresight and hope to encourage and retain our youth, to acknowledge, celebrate and learn from our history and to assist with education and research that is beneficial to our membership.

We are seeing strong engagement and participation from our junior members, whether it be GOAL or Showdown, regional shows, scholarship applications, junior ambassador or travel bursaries. That is a good sign, not only for Canadian Angus but for our industry as a whole, we will continue to be in good hands. I think it is also worth

mentioning that our board has had several new director's join in the last few years who are graduates of the junior Angus program and that brings the whole entity full circle. The directors that brought the Foundation to life and initiated these programs, did it all to help the very kids who are now giving their time back to the same cause for the same reasons, I think that is a tremendous success story and kudos to all of the past directors and volunteers of the CAF.

The Building the Legacy offering is unique each year, as we have some of the most sought after and exclusive genetics, as well as vouchers and credits from throughout the industry, art, experiences and much more. The live sale will be hosted at BC Livestock on Thursday evening, June 25th of the CAA Convention and the FarmGate online portion will close on dlms.ca shortly after the conclusion of the live sale.

Once again, on behalf of the CAF board I would like to thank all of the generous donors, sale staff, Canadian Angus, BC Angus and BC Livestock for helping us bring Building the Legacy 14 to fruition. I would like to personally thank all of our directors for their volunteer efforts throughout the year, and I would be remiss to not thank Belinda Wagner, Executive Director of the CAF for her tireless effort in organizing all that we do, including this sale. I encourage all Angus breeders, including the commercial cattleman out there to attend this year's convention and enjoy the hospitality that BC Angus has assembled for us.

See you in Kamloops!

Greg Pugh PRESIDENT, CANADIAN ANGUS ASSOCIATION



Hello and welcome, It's a privilege to be part of another year of building something meaningful within the Canadian Angus community.

I want to start by recognizing the membership of the Canadian Angus Association. The continued support shown toward the Canadian Angus Foundation speaks volumes about the kind of people in this industry—folks who understand the importance of investing not just in today, but in the future. That support doesn't go unnoticed, and it plays a real role in keeping this breed and this community moving forward.

At the same time, the Foundation deserves a great deal of credit. The work being done—supporting youth, education, research, and the preservation of our history—isn't always the most visible, but it's some of the most important. It takes commitment,

time, and a genuine belief in what this industry can be, and they continue to show up and deliver year after year.

When you look across the country, you see breeders putting in the effort every day—making decisions that are focused on longevity, function, and progress. That same mindset is reflected in the way this community supports its Foundation and invests in the next generation. That's something worth being proud of.

To everyone involved—members, donors, volunteers, and supporters—congratulations and thank you. It takes a collective effort to build something that lasts, and this is a strong example of that in action.

Looking forward to continuing that momentum together.

BUILDING *the* LEGACY 14



LIVE LOTS ARE DESIGNATED WITH AN L BESIDE THE NUMBER AND FARM GATE LOTS ARE DESIGNATED WITH AN F BESIDE THE NUMBER

See page 4 for Farm Gate Auction details.

AUCTIONEER

Ryan Hurlburt306-292-9812

SALES CONSULTANTS

Bohrson Marketing Services

Scott Bohrson 403-370-3010

Castlerock Marketing

Shane Castle306-741-7485

Chad Lorenz403-896-9585

OBI Livestock Ltd

Mark Holowaychuk403-896-4990

Roger Peters403-828-9815

T Bar C Cattle Co

Chris Poley306-220-5006

INTERNET BIDDING

DLMS www.dlms.ca

Mark Shologan 780-699-5082

DLMS Tech Support Team 780-991-3025



*For more lot information, please contact the donor or:
Belinda Wagner • bwagner@cdnangus.ca • 306-537-1518*

CANADIAN ANGUS FOUNDATION BOARD:

Chad Lorenz, Chairman403-896-9585

Matt Bates, Legacy Sale Committee Chair 705-341-9510

Austen Anderson, Legacy Sale Committee.....204-281-3560

Kaitlynn Hanson, Legacy Sale Committee 403-628-9947

Bob Toner, Legacy Sale Committee 306-716-5272

Shawn Birmingham, Past-Chair..... 204-573-6377

Tim Dixon Director 902-432-4771

Jason Frey, Director.....306-485-7230

Macy Liebreich, Director..... 604-861-6740

Don McNalty, Director 705-446-4740

Paula Cornish, CAA Representative 705-341-3220

Robbie Garner, CAA Representative306-836-2035

Myles Immerkar, CAA CEO403-542-2088

TERMS OF SALE

- Purchaser is responsible for shipping costs and transportation of live lots.
- Contact the donor and arrange for transfer within 90 days of the sale date.
- No guarantees are made, lots are sold as is.
- The Canadian Angus Association's Breeder's Guarantee Guidelines will be followed for all "cattle" lots.

Matt Bates

CHAIR, BUILDING THE LEGACY SALE COMMITTEE



On behalf of the Canadian Angus Foundation Legacy Sale Committee, it is my pleasure to welcome you to the Building the Legacy Sale 14.

This event continues to stand as a testament to the strength, generosity, and spirit of the Angus community across Canada. Each year, breeders, supporters, and industry partners come together with a shared commitment to invest in the future of our breed—supporting youth, education, and research initiatives that ensure our long-term success.

The quality and depth of this year's offering reflect that commitment. Donors from across the country have once again stepped forward with outstanding genetics and unique opportunities—some available exclusively through this event. New this year, we are excited to offer an Arrowquip squeeze chute by Dutch auction—an opportunity designed to engage a wide range of Angus enthusiasts, starting at \$20. We are also pleased to offer free nationwide delivery to the successful buyer.

Proceeds from the Building the Legacy Sale directly support programs that empower young people within our industry, helping them develop the skills, knowledge, and leadership needed to carry the Angus breed forward. Your participation, whether as a bidder, buyer, or supporter, plays a vital role in making these initiatives possible. As someone who has personally benefited from these programs, I can speak firsthand to the lasting impact they have.

I would like to extend sincere thanks to committee members Bob Toner, Austen Anderson, Kaitlynn Bolduc, and Chad Lorenz, each of whom has contributed immensely to assembling this year's offering.

I encourage you to take full advantage of the exceptional lineup presented in this catalogue and join us in building a strong and sustainable future for Canadian Angus.

Special thanks to our 2026 donors

Allflex	Davis-Rairdan Embryo Transplants Ltd.	Nordal Angus
Alta Genetics	DLMS/CattleVids	Norheim Equipment Co.
Anderson Cattle Co.	Genex	OBI Livestock Ltd.
Bar-E-L Angus	Gurney Land & Livestock	Peak Dot Ranch Ltd.
Bar-H Land & Cattle	Hamilton Farms	Perrot Cattle Co.
Belinda Wagner	Intercity Packers Meat & Seafood	Poplar Meadows Angus
Belvin Angus	JJL Livestock	Quebec Angus Association
Blairs Ag Cattle Company	Justamere Farms	Rafter SJ Ranch
Bova-Tech Ltd.	Kajal Latimer	Ranch Covey Hill
Bovi-Gen	KT Ranches	Saskatchewan Angus Association
Bow Valley Genetics	M & J Farms	Semex
Brooking Angus Ranch	Mac Angus Farms	Six Mile Ranch
Bullseye	Mackenzie Red Angus	Soo Line Cattle Co.
Canadian Angus Association	McGillivray Livestock	T Bar C Cattle Co.
Canadian Sires + Donors	Merit Cattle Co.	Triple L Angus
Certified Angus Beef	Miller Wilson Angus	U2 Quality Seedstock
Cowtrax Cattle Co.	MJT Cattle Co.	WestGen Genetics Centre
Cudlobe Angus	Movin' on Farms	Wilbar Cattle Co.
Cudlobe Angus West	Murray Ranches	Z Bar Angus Ltd.

THE SALE WILL BE LIVE AND ONLINE WITH DLMS AND FARM GATE TIMED AUCTIONS

LIVE LOTS ARE DESIGNATED WITH AN L BESIDE THE NUMBER AND FARM GATE LOTS ARE DESIGNATED WITH AN F BESIDE THE NUMBER

1. Visit dlms.ca and follow the link to the DLMS FarmGate timed auction site www.farmgatetimeductions.ca, click the LOGIN/REGISTRATION button.

First time users will select the REGISTER button from this page. Fill out the registration form to sign up for a free user account and it allows you to select a username and password for use on all Farm Gate Timed auctions. This program will send you text and email messages whenever there is activity on your favorite lots or someone challenges your proxy bid and this is why you will be asked for both your current email and cell phone number. If you are a past participant in the Farm Gate Timed auctions simply enter your user name and password to continue. This takes you to a list of both current and upcoming Farm Gate Auctions.

2. You can choose your favourite lots in this sale at this time and the program will allow you to open either all sale lots or just your favorite lots on your screen. Any time there is active bidding on a lot you have identified on your favorite list you will get a text and/or an email noting this activity.

3. The program allows you to place a proxy bid on any sale lot. This in fact protects your interest in any lot of interest for you to a specified dollar value you set, when you may not be able to give 100% attention to the sale. If the lot has a \$2000 bid on it and you place a proxy bid of \$3500 into the system, the computer will bid \$2100 for you but if some one else bids \$2200, the computer will again bid for you, this time at \$2300. The system will look after your interest to a maximum of \$3500. If another bidder is on at \$3600, your proxy will no longer be effective and you will no longer have the winning bid on this lot without once again logging in and bidding again.

4. At closing time of the sale the entire sale will extend bidding if a bid is placed on any lot in the sale. Any bid received after close time will extend the sale by the time listed on each sale. In most cases the time gets shorter the longer in to extended bidding the sale is. When no bidding occurs for the extended time the computer will declare the sale finished.

5. Following the sale the Canadian Angus Foundation will invoice all buyers in the sale, please contact the donor with questions or to arrange delivery, pick up or shipping of your purchases.

WHAT IS RACEHORSE STYLE SALE CLOSE? Racehorse style sale close is when the entire sale stays open in extended bidding. This type of sale allows you as the bidder to change to a different lot within the same sale if the bidding has gone in to extended bidding.

HOW WILL EXTENDED BIDDING WORK? When we get to the close out end time the clock for close extends with any bid placed with less than 5 minutes on the clock. This type of extended bidding turns the end time to more of a soft time. Extended bidding allows bidders to compete in lots like a real auction and give all bidders the same time to make a decision. Always follow the clock to see how much time remains in the sale you are interested in.



2026 NATIONAL CONVENTION

is on the horizon

Join us in

Kamloops, BC | June 25 & 26, 2026

Come for Convention, and stay for a beautiful vacation in BC!



What's Planned:

- ▶ Tours of Douglas Lake Cattle Co & Nicola Ranch
- ▶ BCAA Member Cattle Displays at BC Livestock Co-op
- ▶ Barbecue & Networking
- ▶ Building the Legacy 14 Auction
- ▶ Canadian Angus Association and Canadian Angus Foundation AGM

Join us for a full schedule of learning, connecting, and celebrating the Angus community!

Register today and see the full schedule at www.cdnangus.ca/national-convention/



*Background photo supplied by
Tourism Kamloops/Candace Lewis*

Thank you

to our past
Building the Legacy donors

- 8 C's Cattle Co. 2018
Aberdeen Angus Cattle Society 2016
ABS Global Inc 2013
Accelerated Genetics 2016
Allandale Angus 2019
Alberta Angus Association 2014, 2018
Allflex Canada 2015, 2019, 2022-25
Allison Farms Red Angus 2018
Alta Genetics 2012-25
American Angus Association 2016
American Angus Hall of Fame 2013-14, 2017
***Anderson Cattle Co. 2017, 2023, 2025
AngusBreeder.net—PJ Budler 2017
*** Arda Farms/Freeway Angus 2015
Artisan Farms 2016-19
Aspen Hill Angus 2017
Atlasta Angus 2015, 2019
Austen Anderson 2012, 2014, 2017, 2021
Avula Safaris 2018
Bandura Ranches 2012, 2016
Bannockburn Maples Angus 2016
Bannockburn Valley Farm 2016, 2021
Bar 5 Stock Farms 2023-24
Bar-E-L Angus 2013, 2015-22, 2025
Bar-H Land and Cattle 2025
Barry LaBatte 2016, 2019
Basin Angus 2019
BC Angus Association 2017, 2025
BeefSmart Consulting Inc. 2021
Belinda Wagner 2014-18, 2021
Belvin Angus 2012, 2019, 2023-25
Benchmark Angus 2019-23
Bill and Tyler Fulton 2013
Blacklane Farms 2016-18
Blairs.Ag Cattle Co. 2012-18, 2021, 2023
Blairswest Land and Cattle 2017
Blue Mountains Angus 2019
Bluewater Angus Club 2024
BNK Cattle Co. 2023
Boehringer Ingelheim Animal Health
Canada Inc. 2021
Border Butte Angus 2012
Boss Lake Genetics 2018
Botany Angus 2017
Bouchard Livestock International 2016-18,
2021-22
Bova-Tech 2021-25
Bovigen 2024-25
Bow Valley Genetics Inc. 2012, 2014-25
Bridgeway Livestock 2023
Brooking Angus Ranch
2014, 2016-17, 2019, 2023-25
Bullseye 2025
Calgary Stampede 2015
Camo Cattle Co. 2025
Canadian Angus Association 2012-25
Canadian Cattlemen Magazine 2024
Canadian Sires—a division of Bohrson
Marketing Services 2014-21, 2025
Canadian Western Agribition 2014-16
Castlerock Marketing 2023
CCIA 2022
C.D. Land & Cattle 2018
Certified Angus Beef 2023-25
Chapman Cattle Company 2019, 2022
Christian Moulding 2022
Clarke Family Farms Inc. 2024
Cliffhanger Signs & Designs 2022
Cockburn Red Angus 2018
Coleman Angus 2023-24
Coul Angus—James Arnott 2021-24
*** Crescent Creek Angus 2017-18, 2022-24
CSI Angus 2015, 2023-24
*** Cudlobe Angus 2012-13, 2015-25
*** Cudlobe Angus West 2012-13, 2015-25
Dave & Yvonne Hinman 2017
Davis-Rairdan International 2013, 2021-25
Dead Wood Furniture 2014
Delorme Ranch 2017
Dennis & Shelly Ericson 2021
Diamond C Ranch 2017
Diamond T Cattle Co. 2015-16
DJ Cattle Co. 2025
DJH & Associates Ltd. 2013
DLMS/CattleVids 2017-25
Dorran Marketing Inc. 2014-16
Doug & Kathy Fee 2015
Dr. Dale Aylward 2019
*** Dwajo Angus 2014, 2019
*** Eastondale Angus 2014, 2017, 2022, 2024-25
Ebon Hill Farms 2016-2017
EBY Trailers 2019
Elk Ridge Farms 2025
Enright Farms 2017-18, 2024
Erin Yewsiuk Photography 2022-23
Everblack Angus 2019, 2022, 2025
EverythingAngus.com 2012
Eye Hill Stock Farm 2019
*** Ferme Clevely 2014, 2016
Ferme des Collines 2015-16
*** Ferme Gagnon Inc. 2016
Flat Top Cattle Co. 2021
Flesch Farms Inc. 2018
*** Fleury Cattle Company 2023
Forsyth Ranch 2014
*** Fraser Farms 2025
French River 2012
Gail Wildman 2016-18, 2021
Garvie Mountain Angus 2015-17, 2022
Gavin Cattle Co. 2021
Geis Angus 2021-24
GenerVations 2013
Genex 2013-2014, 2024-25
Get-A-Long Stock Farm 2021
***Gilchrist Farms 2016-18, 2024
Glacier FarmMedia—Mike Millar 2016-23
Glasman Farms Ltd. 2025
Graham & Karen McLean 2021, 2023
Glen Gabel Angus 2018-19
Glen Islay Angus 2013, 2024
Goad Family Angus 2017
Golden Thread Livestock Images 2019, 2022, 2025
Gone West Media 2025
Grady C. Dickerson 2018
Graham & Karen McLean & Family 2022
Grand River Angus 2025
Greenwood Limousin & Angus 2018, 2024
Greg Comstock & Doug Fee 2012
GRP—Grant Rolston Photography 2015-16
***Hamco Cattle Co. 2017
Hamilton Farms 2013-15, 2018-22, 2025
Harprey Farms 2024
***Harvest Angus 2014, 2017-19
HBH Farms Inc. 2017
Heart of the Valley Farms 2018
Heart Valley Angus 2017
Henderson Cattle Co. 2015-17
Hidden Creek Farm Inc. 2017
Hillberg & Berk 2014
Hollinger Land & Cattle 2015, 2022-24
Holtby Farms 2019
Home Grown Photography & Design 2021-22
Howe Family Farm 2016, 2019
Ian Selte 2017
Indian River Cattle Co 2024
Intercity Packers Meat & Seafood 2023-25
Iris Creek Farms 2024
J Bar Dee Farms 2018
James Arnott, Coul Angus 2015, 2017-19, 2021
JAS Red Angus 2025
Jaymarandy Livestock 2025
JD Farms 2016-17
JEM Farms 2022
Jenna Loveridge Photography 2021
Jessica Davey Photography 2021
*** Johnson Livestock Angus 2014, 2016
Jordan Buba Livestock Photography 2022-23
JP Cattle Co. 2025
JPD Angus 2024
JPM Farms 2023
Justamere Farms Ltd. 2013-16, 2018
Justin Carvey Fitting 2021

KCH Cattle Co. 2025
 K3 Ranch 2019
 Kane Veterinary Supplies 2015, 2019
 KBJ Round Farms 2016, 2021, 2023-24
 Kemp Family Livestock 2017
 Kenray Ranch 2021
 Keystone Angus 2021
 Kiani Evans 2021
 Kolby Heaven 2017
 KT Ranches 2023
 *** Lauron Red Angus 2015, 2019
 Lazy MC Angus 2013-15, 2018
 Lee & Leanne Carfantan 2012
 *** Leeuwenburgh Angus 2015-16
 Lewis Farms 2015, 2019, 2022-25
 Lisle Livestock 2024
 Livestock Plus 2021
 *** LLB Angus 2012-2013
 Lock Farms Ltd. 2022
 Lookout Stock Farm 2012
 Lorenz Angus Farm 2012
 M & J Farms 2021-22, 2025
 Mac Angus Farms 2016, 2022-25
 MacKinnon Homestead 2021
 Madsen Angus 2025
 Manitoba Angus Association 2016, 2021-22, 2024
 Maple Leaf Sports & Entertainment 2021
 Mar Mac Farms 2013-14, 2017, 2025
 Maritime Angus Association 2019
 Martin Deerline 2021
 Maureen Tubman of Show Champions 2023
 McEntire Red Angus 2017
 McEwen's Fuels & Fertilizer 2021-22
 Meadow Bridge Angus 2024
 Melmac Farms 2022
 ***Merit Cattle Co. 2017, 2022-24
 Mexican Angus Association 2015
 Miller Wilson Angus 2012-25
 Minburn Angus 2018
 MJT Cattle Co. 2017, 2019, 2023
 Mogcks Angus Farm 2017
 Morgan A.I. Services 2021
 Mount Tremblant Resort 2016
 Murray Ranches 2025
 Nelson Hirsche Purebreds 2017
 Netherton Angus 2016
 New Life Mills 2021
 New Rosedale Feeds 2021
 Nolan Cattle Co. 2025
 Nordal Angus 2017-18
 Norheim Ranching 2021
 Northern Alberta Angus Club 2021
 Northline Angus 2013, 2016-17, 2021
 Nu-Horizon Angus 2017
 Nutrien Ag Solutions 2021
 Oberle Circle 7 2016, 2019
 OBI Livestock Ltd. 2021-25
 Ole Farms 2016
 Ontario Angus Association 2023
 Order of Duty Syndicate 2017
 Otter Creek Farms 2017-18
 Paige Albrecht Fine Art & Leather 2016
 Park Mazda 2021-22
 Peak Dot Ranch Ltd. 2013-14, 2022-25
 Peak Veterinary Health 2022-23
 Peter J. Campbell 2015
 Pieper Red Angus 2017
 Piro Red Angus 2024-25
 Ponoka Stampede 2024
 Poplar Meadows Angus 2013-14, 2016-19, 2023-25
 Prairie Pistol Designs 2014, 2025
 Premier Livestock/Hasson Cattle Co./Clear
 View Angus 2017-19, 2022
 Premier Livestock 2024
 Proven Seed 2021-22
 Pugh Farms 2021
 Pursuit Banff Jasper Collection 2023-25
 Quebec Angus Association 2015
 Quick Dick McDick 2021
 Radisson Hotel & Conference Centre 2014
 Rafter D4 Cattle Co. 2024
 Rage Syndicate 2017
 Rainbow Red Angus 2014, 2019
 Rainbow Trailers Inc. 2017
 Ramada Plaza Regina 2014
 Ramblin' Rose Creative 2021
 Ranch Covey Hill 2022-24
 Ranchland Veterinary Services 2021
 Ranch Revival 2021
 Rebecca Shuttleworth 2019
 Red Eagle Acres 2021
 ***Red Moon Angus 2018
 ***Redrich Farms 2014-16, 2018
 Reich Angus 2019
 Reid Angus 2015-18
 Remitall Farms 2013, 2015-18, 2022
 Resby Coutts 2021
 Richmond Ranch Ltd. 2016-18
 Riverside Angus 2023
 Rob Holowaychuk, OBI 2015-17
 Rock Point Angus 2018
 Rocking Heart Range 2024-25
 Rolling Meadows Farms 2024
 *** Rodgers Red Angus 2015
 RSL Red Angus 2017
 Rust Mountain View Ranch 2016, 2019
 Sandy Margetts 2012
 Saskatchewan Angus Association 2021-25
 Saskatchewan Beef Industry Conference 2014
 Saskatchewan Roughriders 2014
 Saskatchewan Stock Growers Beef Business 2023
 Scott Stock Farm 2025
 *** Sealin Creek Ranch 2018
 Select Sires 2013-14, 2016
 Semex 2013-2018, 2021-25
 Service Animal Noiseux Enr 2016
 SE Saskatchewan Angus Showcase 2021
 Sheidaghan Angus 2022
 ShowChampions 2019
 Shiloh Cattle Co. 2019, 2021, 2023
 Six Mile Ranch Ltd. 2013-22, 2025
 Slack Farms 2018
 Smithbilt Hats Inc. 2015
 Soo Line Cattle Co. 2025
 Southern Alberta Angus Club 2021-22
 *** South View Ranch 2014, 2017, 2019
 Spruce Meadows 2015
 Stauffer Ranches 2019
 Steve & Terri Dorran 2016-17
 Still Meadows Farm 2018
 Story Brokers 2021
 Sunberry Valley Ranch 2016
 Susan Thompson 2014
 T Bar C Cattle Co. 2013-2019, 2025
 Tambri Angus 2016-18, 2022-24
 T-Down Trailers Ltd. 2019
 Team Koe 2021
 Telus Agriculture 2024
 Temple Gardens Mineral Spa Resort 2014
 Ter-Ron Farms 2013, 2015-16, 2018-19, 2024
 Thistle Ridge Ranch 2019
 Tina Zakowsky 2022
 Thomas Wildman 2021
 Today's Publishing 2019
 Towaw Cattle Co. Ltd. 2012-19, 2024-25
 Triple L Angus 2018, 2024-25
 Triple S Cattle Co. 2013, 2015, 2017
 TSN Angus 2017, 2019
 ***Tullamore Angus 2014-16, 2024
 Tyler Harris Photography 2021-22
 U-2 Ranch 2015-16, 2018
 U2 Quality Seedstock 2025
 Vikse Family Farms 2016
 Viper Technology Group 2021
 Vision 2000 2014
 Vos Vegas Farms 2024
 W. Sunrise Angus 2017-18
 Wayne & Arlene Gallup 2016
 Western Litho Printers 2022
 Wheatley River Angus Farm 2021-22
 *** Wheeler's Stock Farm 2014, 2016-17, 2023
 *** Wilbar Cattle Co. 2014, 2018-19, 2022
 Windy Ridge Ultrasound 2021-25
 Wood Coulee Cattle Co. 2016-17
 Worth-a-Bit Angus 2016, 2021
 Worth-Mor Cattle 2023-24
 *** WRAZ Red Angus 2017
 Wright Livestock 2024-25
 *** Young Dale Angus 2014, 2017, 2021, 2023
 Zoetis 2015-16
 *** indicates donor of a "Pick-of-the-Herd" Heifer"

LOT 11 DUTCH AUCTION ARROWQUIP ARROWLOCK 75 SERIES SQUEEZE CHUTE



The Canadian Angus Foundation is pleased to partner with Norheim Equipment Ltd. on our Lot 1 donation. This Arrowquip Arrowlock 7500 Squeeze chute with Head Holder and Sternum Bar will be sold at the start of the sale by **Dutch Auction in \$20 increments**. You can pre-order by contacting Legacy Sale Committee member Bob Toner at 306-716-5272 (call/text) or any of our sales committee or staff to have a purchase made on your behalf. After the sale is over, we will have the announcement on who gets the Chute. Be sure to stick around to the end of the sale to watch!

Built for ranchers who need reliable, one-person cattle handling, the Arrowlock 75 Series squeeze chute is your ultimate cattle chute designed to get the job done right every time – because we know your time is valuable.



Efficiency and safety come together in the Arrowlock 75 Series to make cattle handling and management easy on you and your livestock. With the ratchet-style head gate, you get the strongest hold in a manual chute with additional features, such as a true rubber floor, multiple access points, and easy-to-use operating handles for a true one-person operation. Every inch of the Arrowlock 75 Series squeeze chute reflects Arrowquip's dedication to excellence.



Designed with cattle behavior in mind, the 3E Cattle Head Gate prompts cattle to enter the squeeze chute without a fight. With the ratchet locking mechanism, you're guaranteed a strong hold on your cattle, eliminating the chance of them slipping out. With top and bottom swing-out gates for full side access, a drop-down needle door, and side access panels, you can treat or brand your cattle with ease. Unlike other options on the market, our rubber floor is made from true heavy-duty rubber to dampen noise for a smooth and quiet cattle handling experience. The special design on our floors provides great traction for hooves to help cattle feel secure and confident to walk through the chute seamlessly.



Norheim Equipment Co. was built on a simple idea: if customers win, they win. They're here to get you the right equipment backed by real experience and real support. That's how Norheim Equipment is building the most dependable name in Western Canadian Ag. They are a Saskatchewan-based retailer that supplies equipment for Western Canadian livestock producers. As farmers themselves, they understand the demands of livestock production and care deeply about the future of the industry. From tractors to feeding and fencing, Norheim Equipment Co. delivers practical solutions and provide expert support to help producers work smarter, safer and more profitably.

Norheim Equipment Co. will also include free delivery of the Chute, anywhere in Canada.

Donated by:

**Norheim Equipment Co. and
the Canadian Angus Foundation**

Lee Norheim 306-227-4503 | Belinda Wagner 306-537-1518

norheimequipment.com

lee.norheim@norheimequipment.com

NORHEIM
EQUIPMENT CO.

LOT 2L PICK OF THE HERD FLUSH



We are pleased to extend an invitation to Angus cattle enthusiasts from across Canada to visit our beautiful province of British Columbia. While we are located approximately nine hours north of Kamloops, we wanted to contribute something truly special to this offering.

We are proud to offer a Pick of the Herd Flush. We currently have four proven donor females, along with several additional candidates suitable for flushing. This package guarantees a minimum of 10 embryos, with any embryos produced beyond 15 to be split evenly. Flush costs will be the responsibility of the buyer. We will arrange transportation of the donor female to an agreed-upon embryo transplant facility.

If a flush opportunity is not of interest, the buyer may alternatively select 10 embryos from our extensive inventory.

We are flexible and open to working with you to create a package that meets your needs. We are also willing to include semen from our inventory, with the exception of exclusive, purchased semen. This is a great opportunity to support the Foundation and invest in our youth. We encourage you to reach out with any questions—we are happy to discuss options and tailor a program for you.



Donated by:
Poplar Meadows Angus
Tanya Belsham 250-845-8474
tdbelsham@gmail.com
poplarmeadowsangus.ca

LOT 3L A & B BROOKING BEAUTY 333 X BLAIRS EXTERNAL LAW 266

2 PACKAGES OF
2 EMBRYOS

1728370 • JSTN 33A • Jan. 31, 2013 ◦ 2040571 • BBC 266F • Feb. 16, 2018



SIRE EPDS	BW 2.1	WW 61	YW 93	MILK 16	CEM 2.0
DAM EPDS	BW 2.9	WW 56	YW 100	MILK 31	CEM 4

DUFF NAPOLEON 232
Sire: BLAIR'S EXTERNAL LAW 266F
 BAR-E-L ERICA 74A
 S A V HARVESTOR 0338
Dam: BROOKING BEAUTY 333
 TLA BEAUTY 6R

Brooding Beauty 333 has been one of the most important donor females of the last decade and is still going strong at 13 years of age. We were fortunate to acquire a 50% interest in her with Brooding Angus Ranch and she is still producing embryos and contributing in a big way. Beauty 333 currently has 175 registered progeny and is a member one of the most dominant cow families in the breed. One of our favourite daughters is Brooding Beauty 8187 (which we share ownership with Brooding Angus Ranch). 8187 currently has 39 registered progeny and is paving her way as one of the great donors in the breed. These are the first embryos we have sold off 333 as the rest have been utilized in our program.

Donated by:

KT Ranches • ktranches.com

Geoff Anderson (306)731-7921 Kevin Carson (250)878-1000 • kevin@carsongoc.com

LOT 4L MERIT FLORA 6078 X HILL VALLEY RECKONING 931

1 PACKAGE OF
2 EMBRYOS

1934698 • TJL 6078D • Feb. 18, 2016 ◦ 2196725 • IMP 931G • May 4, 2019



SIRE EPDS	BW 4.3	WW 74	YW 124	MILK 9	CEM -1.0
DAM EPDS	BW 3.5	WW 56	YW 82	MILK 22	CEM 7.0

YOUNG DALE BELIEVE 46B
Sire: HILL VALLEY RECKONING 931
 HILL VALLEY ELBINA 456
 BAR S RANGE BOSS 4002
Dam: MERIT FLORA 6078D
 MERIT FLORA 4120

DAUGHTERS

SONS



Merit Flora 6078 needs no introduction to keen Angus enthusiasts. Her progeny have dominated the show and sale rings, having daughters be Top Ten at Canadian Western Agribition and sons highlighting the bull sale season for the last eight years. The matriarch of the Merit program has 25 sons that have averaged over \$30,000 and daughters that are consistent producers. Hill Valley Reckoning will add style and substance to a proven product. *Embryos are grade 1 conventional, qualified for Canada, USA, Mexico, and Australia. Stored at Bow Valley Genetics*

Donated by:

Merit Cattle Co. • meritcattleco.com

Trent 306-869-7207 Janelle 306-869-6993 Garrett 306-815-7078 • tjlmerit@sasktel.net

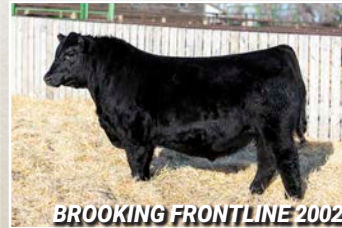
LOT 5L BROOKING BEAUTY 7051 X COLEMAN MATERNAL BALANCE 3734

1 PACKAGE OF
3 EMBRYOS

1974531 • JSTN 51E • Jan. 18, 2017 ◦ 2457963 • IMP 3734L • July 14, 2023



SON OF DAM



SON OF DAM

Brooking Beauty 7051 is a leading donor in the Brooking lineup and she earned her position the proper way, through production. She has earned Elite Status with the CAA and has been a herd sire factory, injecting her progeny with added muscle and power, standing on excellent feet, and owning that uncanny Angus character. Brooking Beauty 7051 is the Brooking type of female as she is ideal in her frame size, is easy-fleshing, is as wide as she is tall, has a great udder, awesome feet, and an ideal Angus head. Brooking had two sons at Agribition this past year and one was Intermediate Champion Bull. Coleman Maternal balance was a \$260,000 1/2 interest top seller at Coleman's 2025 bull sale. His dam Coleman Chloe 9275 was a \$375,000 half interest female who is considered one of the absolute best females at Coleman's and in the breed. These embryos line up some great cow families from top to bottom. *Stored at DRI.*

SIRE EPDS	BW 2.4	WW 88	YW 157	MILK 24	CEM -1.0
DAM EPDS	BW 2.3	WW 58	YW 98	MILK 25	CEM 7.0

COLEMAN ROCK 7200

Sire: **COLEMAN MATERNAL BALANCE 3734**

COLEMAN CHLOE 9275

BROOKING BANK NOTE 4040

Dam: **BROOKING BEAUTY 7051**

TLA BEAUTY 6R

Donated by:

Brooking Angus Ranch • brookingangusranch.com

Justin Morrison 306-536-4590 • brookingangus@outlook.com

LOT 6L A&B COLEMAN DONNA 720 X UDE NEW HEIGHTS 6287

2 PACKAGES OF
2 EMBRYOS

2096123 • IMP 720E • Jan. 8, 2017 ◦ 2436621 • IMP 6287L • Jan. 20, 2023



SIRE EPDS	BW 3.8	WW 64	YW 112	MILK 13	CEM 4.0
DAM EPDS	BW -0.8	WW 57	YW 106	MILK 31	CEM 7.0

BNWZ DIGNITY 8017

Sire: **UDE NEW HEIGHTS 6287**

FCF PHYLLIS 532

S A V RENOWN 3439

Dam: **COLEMAN DONNA 720**

COLEMANN DONNA 439

Coleman Donna 720 is one of our absolute favourite and exciting donor females, that is a full sib to Coleman Glacier 041. She is angular and is the definition of being wedge shaped. She has a flawless udder design and is extremely attractive. In the spring of 2024, her son, KT Free and Easy 3054, was a high seller to Ferme Leblond in Quebec. This year, 720 had sons bring \$33,000, \$28,000, \$24,000 and some of our favourite young females on the ranch are 720 daughters. There will not be many more opportunities to acquire 720 embryos, and the mating with Udell New Heights will be one to look forward to. New Heights has left his mark with his first calf crop, siring multiple \$100,000+ sale toppers and many class, division and show champions across North America.

Donated by:

KT Ranches • ktranches.com

Geoff Anderson (306)731-7921 Kevin Carson (250)878-1000 • kevin@carsongoc.com

Building the Legacy

LOT 7L

COWTRAX ECHO 13K X MERIT INVESTMENT 1054J

1 PACKAGE OF 2 EMBRYOS

2292821 • CSX 13K • Jan. 18, 2022 ◦ 2233546 • TJL 1054J • Feb. 9, 2021



HF ECHO 314F
GRANDDAM TO EMBRYO'S



COWTRAX DELTA 40M
MATERNAL BROTHER TO EMBRYO'S



COWTRAX MILWAUKEE 153L
FULL BROTHER TO 13K

SIRE EPDS	BW 2.3	WW 65	YW 97	MILK 17	CEM 5.0
DAM EPDS	BW 2.4	WW 64	YW 116	MILK 28	CEM 4.0

U-2 COALITION 206C

Sire: MERIT INVESTMENT 1054J

MERIT FLORA 6078D

HF MASTERMIND 98H

Dam: COWTRAX ECHO 13K

HF ECHO 314F

We are very excited to donate an embryo mating that is loaded with high quality maternal lineage! The Echo 13K female would be a full sister to the 2025 Agribition Grand Champion Angus Bull and Top 10 Supreme Bull, Cowtrax Milwaukee 153L owned by Merit Cattle Co, Miller Wilson Angus and 66 Ranch. Echo 13K's first calf, Cowtrax Delta 40M, was the high seller in our 2025 Grasslands Angus Bull Sale for \$42,500 to Border Butte Angus. HF Echo 314F is phenotypically flawless, long bodied, very stout, yet feminine and cranks out herd bulls with every mating. Add another maternal sire like Merit Investment backed by cows like Merit Flora 6078 and U2 Erelite 109Z to the topside will create the kind of females you will want pastures full of!

Donated by:

Cowtrax Cattle Co. • [facebook.com/p/Cowtrax-Cattle-Co-100064279765594](https://www.facebook.com/p/Cowtrax-Cattle-Co-100064279765594)

Colt Kornfeld 306-298-7745 • coltkornfeld@gmail.com

LOT 8L

COLEMAN DONNA 5207 X COLEMAN PLATINUM 2622

1 PACKAGE OF 3 EMBRYOS

2304842 • IMP 5207C • July 18, 2015 ◦ 2365179 • IMP 2622K • July 15, 2022



SIRE EPDS	BW 2.1	WW 77	YW 126	MILK 15	CEM -2.0
DAM EPDS	BW -1.1	WW 42	YW 73	MILK 31	CEM 9.0

COLEMAN ROCK 7200

Sire: COLEMAN PLATINUM 2622

COLEMAN CHLOE 9275

O C C GREAT PLAINS 943G

Dam: COLEMAN DONNA 5207

COLEMAN DONNA 714

Coleman Donna 5207 represents one of the most proven and productive cow families in the Angus breed, combining power, body mass and the kinds of maternal presence that has made the Donna line famous at Coleman Angus. The sire Coleman Platinum 2622 is out of Rock 7200 who has become a standout for his power, growth and eye appeal. Combined with the consistency and production record of Donna 5207 this mating stacks elite Angus genetics designed to produce high-quality herd bulls and productive replacement females. An opportunity to acquire embryos back by the Donna cow family and this proven sire are rare and represent a strong genetic investment for progressive cattlemen.

Donated by:

U2 Quality Seedstock • u2qualityseedstock.ca

Cole Unger 587-370-3700 • Cunger93@gmail.com

LOT 91 CUDLOBE BONNIE 83Y X 44 FAITHFUL 2764 OR X BAR MM JAMESON 16N

1 PACKAGE OF
3 EMBRYOS

1648394 • UF 83Y • Jan. 30, 2011 ◦ 2430884 • IMP 2764K • Oct. 22, 2022 ◦ 2451729 • NHI 16N • Jan. 15, 2025



CUDLOBE BONNIE 83Y



44 FAITHFUL 2764



BAR MM JAMESON 16N

2764 EPDS	BW 1.5	WW 88	YW 159	MILK 18	CEM 11	16N EPDS	BW 1.9	WW 93	YW 149	MILK 24	CEM 9.0
-----------	--------	-------	--------	---------	--------	----------	--------	-------	--------	---------	---------

HPCA VERACIOUS

DAM EPDS BW 2.2 WW 67 YW 124 MILK 32 CEM 8.0

Sire: 44 FAITHFUL 2764

DCF RUBY OF TIFFANY 6799
BASIN JAMESON 1076

Sire: BAR MM JAMESON 16N

STORNAWAY ATALANTA 6K
SYDGEN MANDATE 6079

Dam: CUDLOBE BONNIE 83Y

CUDLOBE BONNIE 114S

Cudlobe Bonnie 83Y is a maternal powerhouse in our Donor program at Cudlobe West. 83Y is a deep bodied cow that is very structurally correct with an excellent udder. She has eight daughters currently in production and has been designated Elite in the Angus herd book since 2017. All her production history should stack up well with either 44 Faithful or Bar MM Jameson. When flushing her this spring we couldn't decide on which bull to use so we just used both to add some excitement. Both these bulls come with great carcass and growth numbers. 44 Faithful has sired some very exciting sons that sold this spring. Bar MM Jameson is currently walking our pastures after an extensive search to add another moderate birth weight sire to our bull battery. We are expecting big things from him going forward.

Donated by:

Cudlobe Angus West • www.cudlobeangus.com

Mat Bolduc 403-625-1113 and David Bolduc 403-625-0499 • cattle@cudlobe.ca

Thank You
TO THIS SALE SEASON'S
DONORS



66 Ranch Ltd.
Allison Farms
Anderson Cattle Co.
Arda Farms-Freeway Angus
Brookside Angus
Bullseye Bull Sale
C & L Beasley Cattle Ltd.
Burnett Angus
Clarke Family Farms
Count Ridge Red Angus
Crescent Creek Angus
Cudlobe Angus
Cudlobe Angus West
Delorme Ranch
Flying K Ranch

Fraser Farms
Howe Farm
Kenray Ranch
Lauron Red Angus
Nordal Angus
Ramrod West Cattle Co.
Redrich Farms
Rio Grande Angus
Shiloh Cattle Co.
Spruceview Angus
Ter-Ron Farms
Towaw Cattle Co.
Ward's Red Angus
Windy Willows Farms

YOUR DONATION OF 15% OF AN ANIMAL TO SELL IN 2026
WILL HELP GROW YOUR CANADIAN ANGUS FOUNDATION

WITH YOUR HELP AND SUPPORT WE WILL CONTINUE TO
FURTHER OUR MISSION AND THE BREED



If you are interested in giving back or learning more about this initiative, please contact Belinda Wagner, Canadian Angus Foundation Executive Director at 306-537-1518 or email bwagner@cdnangus.ca. You can also visit the Canadian Angus Foundation website at www.cdnangus.ca/foundation.

LOT 10L RED WILBAR STRANGLEHOLD 814M

1 PACKAGE OF
3 STRAWS

2371151 • WJD 814M • Jan. 18, 2024



RED WILBAR HIGHLIGHT 624H
Sire: RED WILBAR HENNESSY 3K
RED WILBAR LANA 4F

RED MAR MAC LINCOLN 106H
Dam: RED MAR MAC MRS YOUNG 1K
RED BRYLOR MRS YOUNG 99A

EPDS	BW 0.4	WW 57	YW 109	MILK 26	CEM 8.0
------	--------	-------	--------	---------	---------

Stranglehold captured the attention of the Red Angus world last fall after going undefeated at all the major shows. When the dust settled, he captured Show Bull of the Year, following in the footsteps of his World Champion sire Hennessy. Stranglehold commanded \$75,000 as the featured lot 1 in the Wilbar bull sale to the progressive breeders at Gurney Land and Livestock and Movin' on Farms. He is incredibly big-hipped and blends it together with base width, top and a big soft middle. He stands on a perfect dark foot and gets around with ease. For as much shape and muscle Stranglehold has, he does so with a very modest birth weight of 76 lbs. His dam is a gorgeous uddered, dark cherry red first calf heifer. Here's your chance to incorporate a next generation type sire that offers a balanced approach to performance and calving ease. *Semen is qualified for Canada, USA and Australia. FOB Alta Genetics.*



DAM - RED MAR MAC MRS YOUNG 1K

Donated by:

Wilbar Cattle Co., Gurney Land & Livestock and Movin' on Farms • wilbarcattle.com
Bryan & Tracey Willms and family 306-492-7504 • wilbarcattle@gmail.com

LOT 11L RED SIX MILE SHOWMAN 87L

1 PACKAGE OF
5 STRAWS

2312538 • SIXM 87L • Feb. 2, 2023



SCHIEFELBEIN SHOWMAN 338
Sire: SIX MILE SHOWMAN 580H
RED BAR-E-L FRADO 209U

RED SIX MILE GAME FACE 164Y
Dam: RED SIX MILE GOLDIE 104E
RED SIX MILE GOLDIE 598C

EPDS	BW 0.1	WW 38	YW 65	MILK 23	CEM 8.0
------	--------	-------	-------	---------	---------

Showman 87L is the first red hided son of the popular Schiefelbein Showman 338. Showman is a dark red, calving ease option with added muscle shape and maternal worth. His first son commanded \$82,500 this spring in our bull sale to Walsh Farms in Ontario. We are continuing to utilize this outcross sire heavily at Six Mile, only limited amounts of semen have sold on the open market. *Semen is qualified for Canada and USA. FOB Alta Genetics.*



RED SIX MILE SHOWCASE 33N -
\$82,500 SON TO WALSH FARMS

Donated by:

Six Mile Ranch • sixmileredangus.com
Clayton Gibson 306-642-8013 Tyson Hertz 403-376-7284 • sixmile@sasktel.net

LOT 12L RED CER MOON PIE 4010

1 PACKAGE OF 5 STRAWS

2445916 • IMP 4010M • Jan. 26, 2024



RED CER MS RED BIRD 0024 - DAM

RED ALLISON MOONEY 62G
Sire: RED SSS MOON PIE 680K
 RED SSS LARKABELLE 722
 RED STRA RELENTLESS
Dam: RED CER MS RED BIRD 0024
 RED CER 8040

EPDS	BW 1.9	WW 49	YW 85	MILK 27	CEM 6.0
------	--------	-------	-------	---------	---------

Red CER Moon Pie 4010 was a high selling bull Triple L purchased from the Rohrich Cutting Edge Ranch Bull Sale in the spring of 2025 for \$27,000 U.S. His foot quality is excellent and with a dark red color would add great value to your program. 4010 is a calving ease giant from the Moon Pie 608K herd sire and out of a unique pedigreed cow, Red Bird 0024 that has a great track record. Outcross genetics that will work. For the folks that have seen the bull in person, all are in awe of him. Great choice for your bred heifers to enhance your program.

Donated by:

Triple L Angus • www.facebook.com/triplelangus/
 Randy Tetzlaff 306-231-6969 • tetz@sasktel.net

LOT 13L A&B RED BERWALD COMPLETELY 2056

2 PACKAGES OF 5 STRAWS

2390326 • IMP 2056K • Jan. 29, 2022



RED LEACHMAN PLEDGE A282Z
Sire: RED KJL/CLZB COMPLETE 7000E
 RED HXC 507C
 RED PIE QUARTERBACK 789
Dam: RED BERWALD STONY 001
 RED C-BAR MS STONY A302

EPDS	BW 0.7	WW 55	YW 99	MILK 25	CEM 3.0
------	--------	-------	-------	---------	---------

As of the spring of 2026, Completely has sired his third calf crop born in Canada, sons have been well received and have highlighted bull pens for several of the programs that have utilized him. The Canadian semen rights are owned by Brylor Semen Sales, and they have successfully marketed Completely semen for several breeding seasons. Once again this spring they offered a large inventory on him that commanded a high valuation. If you follow the numbers, he has sired performance and power and ranks top third of the breed for calving ease and BW, and top 15% for growth. Semen is becoming limited, here is an opportunity to source a proven and outcross sire.

Donated by:

U2 Quality Seedstock • u2qualityseedstock.ca
 Cole Unger 587-370-3700 • Cunger93@gmail.com

LOT 14L RED FLYING K MAX 110C

1 PACKAGE OF
3 STRAWS

1869684 • FKR 110C • Feb. 28, 2015



JJL 41F - Daughter



JJL 51F - Daughter



JJL 8H - Son



JJL 79G - Daughter



JJL 26E - Daughter

Donated by:

JJL Livestock • jjllivestock.com

Jarret & Jenna Loveridge 306-730-7072 (Jarret) 306-730-8478 (Jenna) • jjlangus@live.com

RED CROWFOOT 6253S

Sire: RED ML MAX 862U

RED BAR-X MISS LINETT 151K

RED FLYING K ACE 9R

Dam: RED FLYING K ANITA 782T

RED FLYING K PEGGY 154N

EPDS	BW -2.4	WW 46	YW 85	MILK 26	CEM 7.0
------	---------	-------	-------	---------	---------

If you have not yet had the privilege to use a "Max" in your herd this bull is a perfect opportunity. The Max line does absolutely everything right. This bull has been our go to for high vigor at birth and no-nonsense calving ease. He has become an asset here for his phenotypically correct, feminine females that are soft made and perfect uddered. His sons are highly sought after and carry style, ample testicle and an exceptional calving ease to high yearling weight ability. This semen will not be offered often in the future, rare opportunity to get your hands on some here.

Semen collected and stored at Alta Genetics. Canadian Qualified.



LOT 15F A & B RED MCRAE'S VISION 50T

2 PACKAGES OF
5 STRAWS

1408583 • KOF 50T • Jan. 29, 2007



RED COMPASS MULBERRY 449M

Sire: RED FINE LINE MULBERRY 26P

RED DUS FAYETTE 8G

RED MCRAE'S BLAZER 336C

Dam: RED MCRAE'S FRADO 53J

RED WILLIAMETTE FRADO 89W

EPDS	BW 2.0	WW 45	YW 85	MILK 21	CEM 2.0
------	--------	-------	-------	---------	---------

Red McRae's Vision 50T's dam is from the Frado cow family, one of Mar Mac's strongest cow families and he is one of Mulberry's best breeding sons. The Frado and Mulberry genetics have consistently produced Red Angus cattle with thick quarters, calving ease, sound functional udders and marketable offspring. Vision 50T was shown very successfully at the World Angus Forum in Calgary in 2009 and he was also Champion Angus and Supreme Champion at the Gold Show in Dawson Creek that year.

You can build a program around Vision females.

Donated by:

Mackenzie Red Angus • mackenzie-redangus.ca

Ken Mackenzie 250-348-2034 • kandrmackenzie@gmail.com

FARM GATE **LOT 16F**

RED FINE LINE MULBERRY 26P

1 PACKAGE OF 2 STRAWS

1237972 • NVG 26P • Jan. 31, 2004



Red ACC Roxie 32F-Daughter
Junior Champion Female 2019 AgEx

RED HR RAMBO ET 91K

Sire: RED COMPASS MULBERRY 449M

RED BRYLOR MISS ROC 20H

RED SILVEIRAS REDFORD

Dam: RED DUS FAYETTE 8G

RED MC DOUGALL FAYETTE 59A

EPDS	BW 2.4	WW 53	YW 96	MILK 25	CEM 11
------	--------	-------	-------	---------	--------

The two-time Canadian Western Agribition Grand Champion bull is still very relevant in the Red Angus breed. He will raise progeny that are moderate, easy fleshing and the daughters will have udders built to last. He's been designated an elite sire since 2015 and has sired 29 daughters who also gained elite status. Make sure to take the opportunity to acquire this Breed Legend for your collection! *Semen Stored at JMS Genetics, Winnipeg, Manitoba.*

Donated by:

Anderson Cattle Co. • andersoncattle.ca

Bruce & Ione; Austen & Katie Anderson & family 204-281-3560

FARM GATE **LOT 17F**

RED BUF CRK HOBO 1961

1 PACKAGE OF 3 STRAWS

1408583 • KOF 50T • Jan. 29, 2007

RED BJR HOBO 800

SIRE RED BUF CRK HOBO 1413

BJR LANA 3140-302

RED BUF CRK TOMAHAWK 529

DAM RED BUF CR CARRIE VC1174

RED BFLO CRK CARIE VC473

Hobo 1961 was a legendary calving ease and maternal sire that was a high-volume sales leader for ABS throughout the 90s. His semen is very rare and hard to find these days as he sired 1,968 calves in Canada and exponentially more in the United States. He is a designated Elite Sire and is in the top 40% for combined index—quite a feat for a bull born in 1989.

EPDS	BW -2.1	WW 20	YW 38	MILK 18	CEM 10
------	---------	-------	-------	---------	--------

Donated by:

Canadian Angus Foundation • www.cdnangus.ca/foundation

306-537-1518 • bwagner@cdnangus.ca



WESTERN
LITHO
PRINTERS

Thank you to Western Litho Printers for partnering with us to produce our Legacy Sale catalogue.

Contact them at 306-525-8796 for 'Seriously Smart Printing'.

www.westernlitho.ca

LOT 18F



Here is a collection of some of the popular and feature Red bulls that were utilized in the famous Soo Line program, including the the high selling Ribeye 308U. Red Badlands Net Worth 23U is a proven power bull with nearly 350 progeny in Canada alone. Gladiator has 440 progeny and is designated as a CAA elite sire. Knight Hawk was one of the really heavily use bulls across the red breed with 640 direct progeny.

A

1 PACKAGE OF 6 STRAWS

RED BADLANDS NET WORTH 23U

1594762 • IMP 23U • Feb. 12, 2008

EPDS	BW 8.6	WW 58	YW 96	MILK 26	CEM 1.0
------	--------	-------	-------	---------	---------

S A V 8180 TRAVELER 004

Sire: PFFR SHAQ 607

RED RRM-NANCY 8965-9606

RED LCC CHEYENNE B221L

Dam: RED BADLANDS MEDORA 406

RED BADLANDS MEDORA 440

B

1 PACKAGE OF 1 STRAW

RED GLACIER MARIAS 548

879401 • IMP 939E • Feb. 25, 1995

EPDS	BW 3.1	WW 41	YW 66	MILK 29	CEM 13
------	--------	-------	-------	---------	--------

RED LEACHMAN HEAVENLY 8141

Sire: RED LCC HEAVEN OR BUST 1000B

RED LMAN MARY 9003

RED CREEK SIDE COPPER

Dam: RED GLACIER REBALAS

GLACIER HI-RB-LS

C&D

2 PACKAGES OF 5 STRAWS

RED COCKBURN RIBEYE 308U

1481951 • CWJ 308U • Jan. 25, 2008

EPDS	BW 4.4	WW 51	YW 85	MILK 30	CEM 10
------	--------	-------	-------	---------	--------



RED TER-RON DIGGER 11L

Sire: RED BAR-E-L RIBEYE 103R

RED BAR-E-L MARCIE 50N

RED TER-RON TORNADO 157M

Dam: RED WILBAR CORA 443P

RED HEAD CORA 159L

E

1 PACKAGE OF 1 STRAW

RED DWAJO GLADIATOR 32L

1069003 • DJE 32L • Feb. 1, 2001

EPDS	BW -2.3	WW 34	YW 68	MILK 28	CEM 11
------	---------	-------	-------	---------	--------



RED GLACIER MARIAS 548

Sire: RED BLUE SPRUCE ZOOK 50H

RED BLUE SPRUCE SIENA 26A

RED GEIS PRIME RIB 411

Dam: RED DWAJO SUPERIOR 4H

RED BRETON SUPERIOR 39F

F

1 PACKAGE OF 1 STRAW

RED GEIS KNIGHT HAWK 14'02

1115960 • GEIS 14M • Jan. 20, 2002

EPDS	BW 4.0	WW 47	YW 85	MILK 10	CEM 9.0
------	--------	-------	-------	---------	---------



RED YY RED KNIGHT 640F

Sire: RED KBJ KNIGHT 17J

KBJ ROUND LASSIE 18T

RED GARA HEAVENLY 65C

Dam: RED GEIS SAMARIE 234'96

RED GEIS SAMARIE 151'92

G&H

2 PACKAGES OF 4 STRAWS

RED LLLL CH CANYON T100

1416422 • LLLL 100T • Jan. 4, 2007

RED BUF CRK CHF 824-1658

Sire: RED PRESCOTT CANYON 34L

RED HILL SPRINGS GOLDIE

RED SSS BLAZE 853L

Dam: RED RUNNING BAR PICTURE 55P

RED RUNNING BAR LOREN 10L

Donated by:

Soo Line Cattle Co. • Roger Hardy

Contact Belinda at 306-537-1518 for information • bwagner@cdnangus.ca

LOT 19L TER-RON ELDORADO 185L

1 PACKAGE OF 3 STRAWS

2326622 • HFX 185L • Mar. 5, 2023



MURRAY LADY 111N
\$47,500 DAUGHTER



MURRAY EL CAMINO 167N
\$40,000 SON



MURRAY ELDORADO 81N
\$32,000 SON

U-2 COALITION 206C

Sire: GREENWOOD FOUR MILE 47J

RRD TIBBIE 28Z

PF OKLAHOMA 6625

Dam: ANCHORAGE BLACK ANGEL 9803

WERNER BLACK ANGEL 1299

EPDS	BW 1.2	WW 61	YW 113	MILK 27	CEM 4.0
------	--------	-------	--------	---------	---------

Eldorado has quickly become one of the foundation pieces at Murray Ranches. He is a herd sire that combines show ring appeal with soundness of structure and legitimate muscle shape.

His fertility and high libido were very evident as a yearling, freezing nearly 400 units in his only collection at 12 months of age, while also covering 25 females through natural service. As a two-year-old, Eldorado once again ran with cows for 45 days before being halter broke and readied for his fall run - a fall that culminated in being named the 2025 Show Bull of the Year. His acceptance, however, was not limited to the show ring. The first calf crop lit up the auction block, with his daughter selling for \$47,500 to KT Ranches, and his first sons averaging \$24,000 in our 2026 bull sale.

Consistency and completeness are the way we see the breeding ability Eldorado possesses. He breeds true to his skeleton, structure, and calving ease every single time, while not reducing frame. He is a breeding bull in every sense of the word, and we are proud to offer this limited opportunity in this sale. *Canadian Qualified. Stored at Alta Genetics.*

Donated by:

Murray Ranches • www.facebook.com/p/Murray-Ranches-61551646897525/
George & Suntana Murray 403-501-8889 • purebred@gwmurrayranches.com

LOT 20L SIX MILE HUMMEL CARACHO 908M

1 PACKAGE OF 3 STRAWS

2448904 • SIXM 908M • May 3, 2024



DON JOSE 1717 REMIXED 6234 T/E

Sire: DON JOSE 2105 CARACHO 854 T/E

DON JOSE 854 BISMARCK DREAM 501

DON APARICIO SERRUCHO 57 MAXI

Dam: FORGING RUBETA 7653

FORGING RUBETA 6564-T\E

EPDS	BW 2.1	WW 46	YW 85	MILK 15	CEM -1.0
------	--------	-------	-------	---------	----------

Six Mile Hummel Caracho 908M represents a truly unique and globally influenced herd sire that represents elite Argentine genetics and is a true breeding bull to build around going into the future. Caracho 908M sold for an impressive \$132,500 in the New Year's Resolution Sale and has quickly risen to prominence as one of the most talked about and exciting

Angus bulls in the breed today. His pedigree traces back to embryos imported directly from the renowned La Rubeta program in Argentina, a program that left a lasting impression on the Hummel family during their early visits south. The donor dam, Rubeta 7653 Forjadora, was widely admired as one of the top females in Argentina, and her influence is evident in the quality, presence, and maternal strength that 908M carries. The La Rubeta program has produced some of the most sought-after cattle in South America, including individuals that have excelled at prestigious events like Palermo, and their genetics have been embraced by progressive breeders across North America looking to add outcross value and phenotype. Caracho 908M is a striking individual in the flesh, combining herd bull presence, structural integrity, and added shape with a bold, attractive look. He offers a fresh pedigree option without sacrificing performance or maternal reliability. This is an opportunity to access a high-demand sire backed by world-class genetics that are built to add value, differentiation, and profitability to any program.

Donated by:

Canadian Sires + Donors • bohrson.com/canadian-sires
Scott Bohrson 403-370-3010 Rob Voice 306-270-6082 • bohrsonmarketing@gmail.com

LOT 21L A & B HF ELEVATION 56N

2 PACKAGES OF
5 STRAWS

2443281 • HAMI 56N • Jan. 14, 2025

ELLINGSON HI-RANGE

Sire: HF HI-COUNTRY 7L

HF TIBBIE 21J

HF STORM CENTER 26D

Dam: HF TIBBIE 205F

HF TIBBIE 14D



HF ELEVATION 56N

SOLD TO BIG ROCK, REGENCY AND SKINNER RANCH FOR
\$130,000 (USA BOUND)

EPDS	BW 0.4	WW 64	YW 118	MILK 39	CEM 11.0
------	--------	-------	--------	---------	----------

This proud herd bull prospect is solid on all four corners and thick from front to back. Elevation puts rugged power and muscle expression into a stylish and attractive package. The foot quality comes to him naturally when you read through his pedigree. His donor dam, HF Tibbie 205F, has solidified herself as a staple female for us. She has impeccable feet and an ideal udder along with tons of mass, middle, and style.

Elevation is ranked a definite heifer bull, with great performance numbers, as well as ranking in the top 10% for Scrotal, Claw and Angle, Milk, Maternal Calving Ease and Functional Longevity, a very balanced set of numbers across the board.

I don't think we need to go on about the top side of the pedigree, HF Hi-Country 7L progeny have topped sales across the country, and will continue to impress for some time to come. The proof is in the pudding.



HF TIBBIE 205F

DAM OF ELEVATION



HF ANVIL 46N

FLUSH BROTHER - SOLD TO
BAR-H LAND & CATTLE FOR
\$175,000



HF TIBBIE 224J

SOLD HALF INTEREST TO
GRAND RIVER ANGUS FOR
\$130,000

Donated by:

Hamilton Farms • hamiltonfarms.ca

Rob 403-540-3186 Gail 403-540-8291 Joel 403-808-6341 • angus@hamiltonfarms.ca

LOT 22L A & B HAROLDSON'S AH LEGEND ET 36L

2 PACKAGES OF
5 STRAWS
FEMALE SEXED

2343706 • AFSY 36L • Feb. 21, 2023

DON APARICIO SERRUCHO 57 MAXI

Sire: HUMMEL SOUTH AMERICA

FONTANA RUBETTE 7567-T/E

BAR-E-L NATURAL LAW 52Y

Dam: BAR-E-L ERICA 74A

HF ERICA 339T



EPDS	BW 3.2	WW 55	YW 99	MILK 27	CEM 8.0
------	--------	-------	-------	---------	---------

A very unique and timely opportunity to acquire Bar E-L Erica 74A genetics through her outcross son in Haroldson's AH Legend 36L. The first two Legend 36L calf crops are proving the value of the mating of the legendary Erica 74A and the outcross Argentine bull Hummel South America. Take a moment to check his data and make special note of the Scrotal, Docility, Claw, Angle, Ribeye, HPG, Milk, Functional Longevity, Teat, Udder. The supply of sexed female is very limited and worth your consideration.



BAR-E-L ERICA 74A

DAM



BLAIR'S EMBLYNETTE 527N

LEGEND 36L DAUGHTER



SON OF HAROLDSON'S
LEGEND 36L

Donated by:

Blairs Ag Cattle Company • blairscattleco.com

Kevin Blair 306-365-7922 Darren Blair • kevin@texcana.ca

LOT 23L A & B DMM DISRUPTION 26N

2 PACKAGES OF 5 STRAWS

2412961 • DMM 26N • Jan. 7, 2025



DAM



Sire: **DMM ROLLIN' ON 38L**
 DMM MISS ESSENCE 21G
 LFE BEST ANSWER 800H
 Dam: **DMM ERROLLINE 43L**
 DMM ERROLLINE 37J

DMM Disruption 26N is a unique individual with a unique pedigree. He boasts a 79 lb BW while having a September 2 WW of 1079 lbs and was 1645 lbs at 13 months. His dam is a beautiful female with another top bull calf at side.

Disruption was the Immortals Supreme Champion Bull. He found his way to the backdrop nine times as a calf with five interbreed titles. We feel his true contribution will be as a herdsire though.

Miller Wilson Angus and Nordal Angus are excited to support the Angus Foundation with two packs of 5 straws of semen on DMM Disruption 26N. *Stored at Alta Genetics, approved Canada, USA, AUS.*

Donated by:

Nordal Angus • 306-946-7946 • nordal@sasktel.net
 Miller Wilson Angus • millerwilsonangus.ca • 780-781-9733 • dmm.mwangus@gmail.com

LOT 24L SCHIEFELBEIN PONDEROSA

1 PACKAGE OF 5 STRAWS

2329363 • IMP 1122K • Feb. 1, 2022



CONNEALY DRY VALLEY
 Sire: **CONNEALY BIG VALLEY**
 BUNTY LAY OF CONANGA 4930
 MOGCK ENTICE
 Dam: **FROSTY ELBA LIZZY 480**
 FROSTY ELBA LIZZY 1268

EPDS	BW 2.0	WW 88	YW 154	MILK 32	CEM 10.0
------	--------	-------	--------	---------	----------

A rare opportunity to access semen from the popular Ponderosa. His progeny have been exceptionally well received, and his semen has consistently commanded top prices whenever offered for sale. There has never been a stronger push in the industry to return to functional, deep-bodied, structurally correct cattle—and Ponderosa is leading that charge. He stamps his offspring with mass, performance, and fleshing ability, all while maintaining the style and balance demanded by today's cattlemen. *Stored at Bovigen.*

Donated by:

Peak Dot Ranch • www.peakdotranch.com
 306-266-4414 • peakdot@gmail.com

LOT 25L COVEY HILL BOZEMAN 69K

1 PACKAGE OF 5 STRAWS

2311572 • COV 69K • Dec. 23, 2022

CONNELY CONFIDENCE PLUS

Sire: **CONNELY EMERALD**

JACE OF CONANGA 6571

KG JUSTIFIED 3023

Dam: **COVEY HILL ELBA 22H**

S A V ELBA 9806



DOX00 COVEY HILL ELBA 22H - DAM

EPDS	BW 1.9	WW 78	YW 144	MILK 22	CEM 5.0
------	--------	-------	--------	---------	---------

Bozeman was our pick of our 2023 calf crop, and he did not disappoint us! He has bred our heifer group over the past two years, and we are pleased to report that his calf crop is impressive, both on the male and female sides. Bozeman has turned out to be an imposing, attractive, docile, super fertile individual who tracks super well. His EPD profile is nothing short of impressive: top 4% Weaning Weight, top 2% Yearling Weight, top 25% Docility, top 9% Carcass Weight, top 3% Marbling, and the list goes on. He combines performance and carcass traits with phenotype and maternal power. CAN, USA & AUS qualified. *Semen is stored at DMV Genetiqs.*

Donated by:

Ranch Covey Hill • ranchcoveyhill.com/en

Sabrina 514-893-0280 • info@ranchcoveyhill.com

LOT 26L A & B SHAW CALDWELL 11432

2 PACKAGES OF 5 STRAWS

2307226 • IMP 1432J • Aug. 8, 2021

SITZ STELLAR 726D

Sire: **SITZ RESILIENT 10208**

SITZ MISS BURGESS 1856

TEHAMA UPWARD Y238

Dam: **TEHAMA MARY BLACKBIRD D094**

TEHAMA MARY BLACKBIRD Y684



BELVIN NASHVILLE 5033-SON

◀ \$74,000 2026 HIGH SELLING BULL TO CIRCLE G VENTURES AND CHICO RANCHES

EPDS	BW -2.2	WW 72	YW 128	MILK 42	CEM 10.0
------	---------	-------	--------	---------	----------

Shaw Caldwell 11432 has established himself as one of the leading sires in the Angus breed right now. His ability to sire true calving ease with performance, eye appeal, large scrotal and structural soundness is very impressive. The first daughters of Caldwell have now calved and they are moderate framed and feminine, while being heavy milking females with great udder quality. In the 2025 and 2026 Belvin Angus bull sales, 78 Caldwell sons have sold with an average price in excess of \$21,000. Caldwell sons have been highly sought after by purebred and commercial breeders alike. Caldwell is a proven and consistent sire whose mark on the Angus industry will continue to grow.

Donated by:

Belvin Angus • belvinangus.com • belvinangus@xplornet.com

Gavin Hamilton 403-556-5246 Colton Hamilton 403-507-5416 Brendyn Elliot 250-449-5071

LOT 27L A & B ELLINGSON HI-RANGE

2 PACKAGES OF
5 STRAWS

2251702 • IMP 1356J • Mar. 12, 2021



2025-high selling bull: HF Hi-End 9M, purchased by Ter-Ron Farms, and Bar-E-L Angus for \$140,000.



2025-high selling female: HF Rosebud 5M, purchased by Grand River Angus, MI for \$60,000.



2024-high selling bull: HF Hi-Country 7L, purchased by Strongbow Farms, River Valley Cattle, Peak Dot Ranch and Hamilton Farms for \$185,000.



2024-high selling female: HF Mistress 192L, purchased by Hilltop Hay and Livestock, CO. for \$34,000.

BASIN RAINMAKER 4404

SIRE: ELLINGSON RANGELAND

EA EMBLYNETTE 7009

ELLINGSON HOMEGROWN 6035

DAM: EA EMBLYNETTE 9473

EA EMBLYNETTE 7211

A true calving ease specialist with growth and power to boot! Hi-Range will be a game changer for structure, foot quality and mobility. His outcross pedigree offers mating flexibility for a large cross-section of the breed.

The bulls are solid and ultra thick, low BW and have the ability to pack on the pounds. The females are stunning, lots of middle, eye appeal and swagger that you can't deny.

EPDS	BW -1.5	WW 72	YW 123	MILK 25	CEM 15
------	---------	-------	--------	---------	--------

Donated by:

Hamilton Farms • hamiltonfarms.ca

Rob 403-540-3186 Gail 403-540-8291 Joel 403-808-6341 • angus@hamiltonfarms.ca

LOT 28L KR CRUSADE 4074

1 PACKAGE OF
5 STRAWS

2414176 • IMP 4074M • Jan. 8, 2024



BASIN BROKER 9162

Sire: 8N ACADEMY 2101

8N NOLA 907

PANTHER CR INCREDIBLE 6704

Dam: KR LASS 9118

WK LASS 1591

EPDS	BW 2.5	WW 85	YW 136	MILK 23	CEM 6.0
------	--------	-------	--------	---------	---------

Crusade was a member of the Champion Pen Of Three at the 2025 Denver Stock Show and the Reserve Grand Champion Angus Bull at the 2025 Stockade Roundup Gold Show.

Donated by:

Justamere Farms • justamereranches.com

Jon Fox: 780-808-6860 Jon Fox V: 306-821-4182 • justamere@sasktel.net

Building the Legacy

LOT 29L A & B **BAR-E-L ROYAL MINT 88G****2 PACKAGES OF
5 STRAWS**

2121974 • YHB 88G • Feb. 20, 2019



HF EVENING TINGE 38C - DAM

CONNEALY CAPITALIST 028

Sire: LD CAPITALIST 316

LD DIXIE ERICA 2053

LLB REFLECTION 607A

Dam: HF EVENING TINGE 38C

HF EVENING TINGE 118Z

EPDS	BW 1.4	WW 69	YW 123	MILK 23	CEM 11.0
------	--------	-------	--------	---------	----------

Bar-E-L Royal Mint's dam, HF Evening Tinge 38C, is a prolific donor at Murray Ranches. Royal Mint will sire cattle with added frame and performance - his daughters will calve with excellent udder and teat scores and his sons will have extra muscle with added length of body and big scrotal.

*Donated by:*Bar-H Land & Cattle & Bar-E-L Angus • barh.ca • barelangus.com

Robin Hogberg 306-743-7490 John Hogberg 306-496-7696 Dave Longshore 403-740-6788

rthogberg@sasktel.net • barelangus@gmail.com**LOT 30L** **BAR-H MINDBENDER 141D****1 PACKAGE OF
5 STRAWS**

1950055 • AHPC 141D • May 9, 2016



HF TIBBIE 93U - DAM

GDAR GAME DAY 449

Sire: S SUMMIT 956

S PRIDE ANNA 709

S A V 004 PREDOMINANT 4438

Dam: HF TIBBIE 93U

HF TIBBIE 35K

EPDS	BW 1.7	WW 65	YW 120	MILK 30	CEM 7.0
------	--------	-------	--------	---------	---------

Bar-H Mindbender 141D is some of the most valuable semen to sell when offered. Mindbender produces high quality females that excel in production. This may be the last time to obtain Mindbender semen as supplies are limited.

*Donated by:*Bar-H Land & Cattle Co.—Robin, Michelle & John Hogberg • www.barh.caJohn 306-496-7696 and Robin 306-743-2840 • rthogberg@sasktel.net



LOT 31F A & B SEALIN CREEK ERIC 5Y

2 PACKAGES OF 5 STRAWS

1607395 • PAK 5Y • Jan. 24, 2011



BLACKTOF ERIC 30M

Sire: BLACKTOF ERIC 15S

BLACKTOF ERICA 27K

ANGUS ACRES TOM BOY 64D

Dam: ADELPHI ELINE 37K

ADELPHI ELINE 10Z

Sealin Creek Eric 5Y was a straight Canadian pedigreed bull that we purchased from Dan & Janette Speller of Sealin Creek Ranch at the 2012 Canadian Legacy Sale for \$37,000. He caught the eye of many at the sale with his length and natural muscle shape. 5Y was all performance, having the highest WPDA at Agribition as a coming two-year-old bull. His dam, Adelphi Eline 37K produced calves for 18 years, calving in the first cycle every year. If you are looking for a bull to add performance and longevity to your herd, backed by a straight Canadian pedigree, this is the bull for you.

Donated by:

Z Bar Angus Ltd. • zbarangus.com

Dave & Carol Gray 306-823-3954 • zbar3954@gmail.com



LOT 32F A & B S A V CHARISMA 3918

2 PACKAGES OF 5 STRAWS

AAA20761391 • 3918 • Feb. 1, 2023



LD CAPITALIST 316

SIRE: MUSGRAVE 316 COLOSSAL 137

MUSGRAVE LADY BARBARA 545

S A V 707 RITO 9969

DAM: S A V EMBLYNETTE 2369

S A V EMBLYNETTE 7566

EPDS	BW 1.4	WW 66	YW 120	MILK 24	CEM 9.0
------	--------	-------	--------	---------	---------

S A V Charisma is one of the greatest phenotypic and genetic packages SAV have ever produced with an unmatched combination of maternal, muscle, marbling, feet quality and disposition. His dam needs little introduction as the #1 beef value cow in the SAV herd. She recorded an astonishing IMF ratio of 121 on 118 progeny. Maternal sibling to Rise N Shine among many other sale topping bulls and son of Semex's famed Musgrave 316 Colossal 137. Second highest selling Colossal son in the 2024 SAV Production Sale.



Donated by:

WestGen Genetics Centre • www.westgen.com

Krista Christiuk 778-345-5411 • kchristiuk@westgen.com

Lot 33F



A unique offering of proven black sires that played a big role in writing a chapter of Angus history. KG Power Design is a proven calving ease grandson of New Design. Centennial is a son of Sitz Heritage with over 200 registered progeny, he saw heavy use in the Soo Line program and was a \$40,000 high seller out of the Masterpiece sale. Prestige was used by many of the progressive operations in Canada and is a grandson of Bando 5175.

A



1 PACKAGE OF 3 STRAWS

BEVERLY HILLS CENTENNIAL 503

1249972 • TCSC 3R • Jan. 2 2005

SITZ ALLIANCE 6595

Sire: SITZ HERITAGE 10709

SITZ EMMA E 707

A A R RAINMAKER 7407

Dam: H A BELETTA 0219

H A BELETTA 8615

EPDS	BW 2.5	WW 32	YW 63	MILK 24	CEM 7.0
------	--------	-------	-------	---------	---------

B



1 PACKAGE OF 1 STRAW

CJ PRESTIGE 25T

1554108 • IMP 025T • Jan. 25, 2007

S A F 598 BANDO 5175

Sire: H S A F BANDO 1961

J K S MISS CHEYENNE 196

TC FREEDOM 104

Dam: C J BLACKBIRD 11P

H F BLACKBIRD 61H

EPDS	BW 2.5	WW 49	YW 92	MILK 22	CEM 5.0
------	--------	-------	-------	---------	---------

C



1 PACKAGE OF 4 STRAWS

KG POWER DESIGN

1196908 • IMP 9743J • Mar. 3, 1999

B/R NEW DESIGN 036

Sire: D B NEW FLY DESIGN 730

D B MS FLYER 530

S A F POWER FIX

Dam: POWER FIX K G 3

RAINMAKER K G 2

EPDS	BW -1.4	WW 42	YW 74	MILK 30	CEM 13.0
------	---------	-------	-------	---------	----------

Donated by:

Soo Line Cattle Co. • Roger Hardy

Contact Belinda at 306-537-1518 for information • bwagner@cdnangus.ca



LOT 34F N BAR EMULATION EXT

1 PACKAGE OF 5 STRAWS

849773 • IMP 479U • Feb. 1, 1986



EMULATION 31
Sire: EMULATION N BAR 5522
 ANKONY 8F78 LASS 8F275
 EMULATION 31
Dam: N BAR PRIMROSE 2424
 PRIMROSE N BAR 9962

EPDS	BW 1.3	WW 37	YW 66	MILK 22	CEM 13
------	--------	-------	-------	---------	--------

One of the most influential female makers in the Angus breed, EXT is the most widely used bull in Angus history, a bull that has stood the test of time. EXT is a sire that will live on forever with his ability to produce great females and his relevance will continue to last.

Donated by:

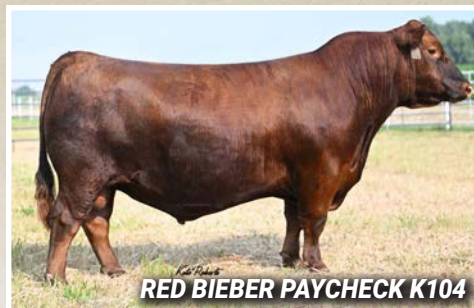
Canadian Angus Foundation • www.cdnangus.ca/foundation
 306-537-1518 • bwagner@cdnangus.ca



LOT 35F A, B & C Pick of any bull from the

3 PACKAGES OF 10 STRAWS

2026 ALTA GENETICS INVENTORY



Alta Genetics is generously offering three lots of 10 units each of any Alta bull that qualifies for Canada. You can choose from every Canadian qualified bull in Alta Genetics' inventory for a minimum 10 units each and a total of 30 units.

Donated by:

Alta Genetics • www.altagenetics.com
 1-800-465-8858 • info@altagenetics.com



LOT 36F A&B *Pick of any bull from the*

2 PACKAGES OF
5 STRAWS

2026 SEMEX BEEF INVENTORY



You may choose from any bull in the 2026 Semex catalogue (subject to availability). You can choose from every Canadian qualified bull in Semex inventory for a minimum of 5 units and a total of 10 units including the bulls pictured here.

Donated by:

Semex • www.semex.com/beef
519-821-5060 • kwalker@semex.com



LOT 37F A&B *Pick of any bull from the*

2 PACKAGES OF
5 STRAWS

2026 GENEX BEEF INVENTORY



You may choose from any bull in the 2026 Genex catalogue (subject to availability). You can choose from every Canadian qualified bull in Genex inventory for a minimum of 5 units and a total of 10 units including the bulls pictured here. No Sexed Semen will qualify. Please contact Patty Lasby if you need more information.

Donated by:

Genex • www.genexcanada.ca
519-835-3982 • plasby@genex.coop



LOT 38F \$1,000 SEMEN COLLECTION VOUCHER

For more than 50 years, Alta Genetics has offered custom collection, storage and global distribution. For Building the Legacy, they are generously providing a \$1,000 voucher toward any semen collection you require.



Donated by:

**Alta Genetics • www.altagenetics.com
1-800-465-8858 • info@altagenetics.com**



LOT 39F \$1,000 CREDIT TOWARDS AN IVF CYCLE OR CONVENTIONAL FLUSH

The team at Bow Valley Genetics are strong supporters of our sector and continue to support our Foundation offering what are, to many of us, essential services as part of our seedstock operations. This embryo flushing service credit can be used for embryo services at the BVG location at Brooks, AB.



Donated by:

**Bow Valley Genetics Ltd. • bowvalleygenetics.com
587-887-1934 • office@bowvalleygenetics.com**



LOT 40F \$1000 CREDIT TOWARDS AN IN-VIVO CONVENTIONAL FLUSH

Bova-Tech is offering \$1,000 credit towards a conventional flush. This flush package does not include semen. Travel is the responsibility of the buyer if flushed on-farm, and if done at the facility near Cochrane, Alberta, board would be the responsibility of the buyer. Thanks to Bova-Tech for their support!



Donated by:

**Bova-Tech
403-332-1567 • info@bova-tech.com**



LOT 41F \$1,000 SERVICE CREDIT

Davis-Rairdan Embryo Transplants implants an average of 2,000 embryos annually and operates a fully equipped mobile laboratory, providing on-farm service anywhere in Alberta, Saskatchewan and Manitoba. The winning bidder will receive a \$1,000 service credit.



Donated by:

**Davis-Rairdan Embryo Transplants Ltd. • www.davis-rairdan.com
403-946-4551 • embryos@davis-rairdan.com**



LOT 42F A & B 2—\$500 SERVICE CREDITS

Bovi-Gen is a state-of-the-art bovine reproductive facility conveniently located just west of Moose Jaw, Saskatchewan on highway #1. Their facility is more than just the equipment: when you work with Bovi-Gen, you can trust a team of dedicated and knowledgeable professionals that are experienced, passionate and committed to providing your animals with exceptional care. Services Include: embryo IVF or conventional flushing, domestic semen production and export semen production.



Donated by:

**Bovigen
306-690-3243 • office@bovigen.net**



LOT 43F \$1,000 SERVICE VOUCHER

DLMS/Cattlevids have been a long-time supporter of the Building the Legacy sale. This lot presents a great opportunity to get a head start on your sale planning for this fall or next spring with a \$1,000 service credit for use on any of the services offered by DLMS/Cattlevids. Plan your sale with the industry-leading DLMS sale broadcast or have Cattlevids capture your sale offering with video or pictures. When it comes to online exposure for your sale, DLMS and Cattlevids.ca have you covered. This credit is to be used by the end of the spring 2027 bull sale season.



Donated by:

**DLMS/CattleVids • www.dlms.ca
Mark Shologan 780-699-5082**



LOT 44F \$1000 SALE CREDIT IN 2026, OBI MANAGED

OBI has been a long-time supporter of the Legacy Sale, both as a donor and purchaser, along with assisting with marketing. This year they are once again offering a purchase credit for any OBI fully-managed sale. Credit must be used by December 31, 2026.



Donated by:

OBI Livestock Ltd. • www.cattlemanagement.ca
Mark Holowaychuk 403-896-4990



LOT 45F ALLFLEX READER/SCANNER

The AWR300 is the next generation EID stick reader and features a 8GB memory with a large back-lit display. It is lightweight, well balanced and comfortable in the hand. Key features include: Long read range (30cm or 12"), for all HDX, FDX-B ear tags to ISO Standard 11784/11785; Outstanding battery life, even at top power consumption, in continuous read mode, the LI-Ion Battery will last around 12 hours; 8GB memory for up to 1 million records. Record tag numbers with time stamp data and additional information; The database function can display several items of data at once and add new information for an individual animal from defined lists including breeds or medicines; Activities announced by multiple LED lights, plus a choice of sounds and vibration, to ensure you never miss an action; Large backlit color display, to clearly read IDs at scanning, even in dim light; Built-in real-time clock displays Date and Time; Connect to external devices using either WLAN, USB or Bluetooth connection.



Donated by:

Allflex • www.allflex.global/na
Tara Velestuk 403-429-0526 • tara.velestuk@merck.com



LOT 46L \$1500 VOUCHER FOR MINERAL

Proudly Donating

\$1,500 of Bullseye Mineral Premix

in support of the Building the Legacy Sale

We're honoured to work alongside producers in supporting healthy, productive animals, and are dedicated to providing reliable, high-quality nutrition solutions that help cattle operations thrive for years to come.



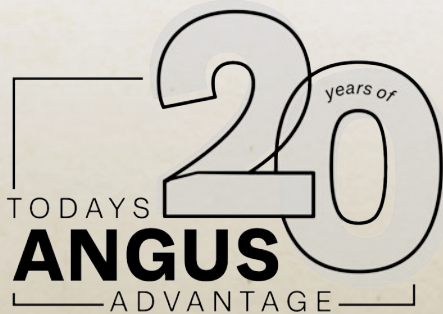
Tom McNeely
Brand Manager / Co-Founder
(780) 679-7220
tomj.mcneely@bullseyefeeds.ca

Donated by:

Bullseye • bullseyefeeds.ca
Tom McNeely 780-679-7220 • tomj.mcneely@bullseyefeeds.ca



LOT 47L FULL PAGE – FULL COLOR AD IN TODAY'S ANGUS ADVANTAGE



Celebrating 20 years, Today's Angus Advantage is proud to partner with some of the industry's most progressive breeders to promote and enhance the Angus breed.

With over 50 years in seedstock marketing, we offer everything from custom websites and sale catalogues to complete sales management – helping operations of every size reach their fullest potential.

We are proud to once again support the Canadian Angus Foundation.



Donated by:

T Bar C Cattle Co. • tbarc.com

Chris Poley 306-220-5006 Bryan Kostiuik 306-933-4200 • info@tbarc.com



LOT 48L 2027 CONVENTION PACKAGE 3 NIGHTS HOTEL AND 2 REGISTRATIONS



Québec Angus is excited to be hosting the 2027 Convention in Montreal. They are offering a package including two full Convention registrations and three nights' accommodation at the host hotel.



Donated by:

Quebec Angus Association • cdnangus.ca/quebec-angus-association
quebecangus@live.ca



LOT 49F SK ANGUS TOUR PACKAGE JULY 29 & 30, MOOSE JAW, SK



The Saskatchewan Angus Summer Tour has become THE place to be in Saskatchewan in the summer. July 29th and 30th we'll be in Moose Jaw for the 2026 EVENT. Come and enjoy some of the finest hospitality Saskatchewan has to offer and visit various herds in the area. If you haven't ever been on the tour, you need to check it out. Package includes registration for two and two nights accommodation at the host hotel, the Holiday Inn Express, Moose Jaw, SK.



Donated by:

Saskatchewan Angus Association • www.cdnangus.ca/saskatchewan-angus-association
306-537-1518 • office@saskatchewanangus.com



Lot 50L CUSTOM FIR BENCH

This is a 6-foot pine bench made by Dr Paul Christiansen, long time large animal veterinarian in the BC interior. The approximately 200-year-old tree came from the historic Indian Gardens Ranch owned by the Haywood-Farmer family. If the purchaser of the bench wishes, McGillivray's will arrange to have their brand or logo engraved on the bench.

They've also included a couple copies of Paul's book "Keepers of the Grass" which describes grass management techniques from multiple ranches across North America.



Donated by:

**McGillivray Livestock • mcgillivraylivestock.ca/
Jason & Susan McGillivray & family 250-319-6925 • mcgillivraylivestock@gmail.com**



Lot 51F A, B & C

These three tables with benches were custom-made by Dead Wood Furniture Co. for the Angus Central patio and have been marveled at over the years. Here's your chance to take one home.

Tables are to be picked up at 292140 Wagon Wheel Blvd., Rocky View County, AB by the buyer immediately following the sale. Speak with a CAF Legacy Committee member if you need assistance or more information.



Donated by:

**Canadian Angus Association • www.cdnangus.ca
306-537-1518 • bwagner@cdnangus.ca**



Lot 52F CAB 13 PIECE MODERN KNIFE SET

Sharp. Sleek. Stylish. Turn your kitchen into a culinary showroom with this 13-piece knife block. Each knife blade is forged from genuine German steel and features a triple-riveted and durable G-10 handle with decorative medallion and solid end. The heavy, balanced weight feels great in your hand while the micro-serrated steak knives cut everything like a medium-rare ribeye. This beautiful branded set contains an 8-in. chef knife, an 8-in. bread knife with serrated blade, a 9-in. slicer knife, a 3.5-in. paring knife, 6 steak knives with micro-serrated blades, scissors and an oval-shaped sharpening steel which are contained in a wooden knife block.



Donated by:

**Certified Angus Beef • shop.certifiedangusbeef.com/products
330-345-2333 • mconley@certifiedangusbeef.com**



LOT 53F JD WHARNCLIFF CUSTOM KNIFE

This compact handmade knife from JD Knives in Fort St. John, B.C., is designed for practical everyday use while still carrying the look and feel of a true custom blade. Built with a 3.5" D2 cryo-treated steel blade, it offers strong edge retention and durability for hunting, small cutting tasks, everyday carry, and general utility. The blade has a stonewashed finish and includes the Rafter SJ Angus logo etched into the steel, giving it a clean working finish that suits both field use and display. The handle is crafted from blue stabilized curly maple, paired with simple brass pins for a clean, durable, and refined look. At approximately 7" overall length, the JD Wharncliff is easy to carry, comfortable in hand, and sized for real-world use without being oversized. This knife includes a custom sheath, along with a limited lifetime warranty and lifetime sharpening service. Retail Value: \$425.



Donated by:

**Rafter SJ Ranch • [facebook.com/shannon.trask.58](https://www.facebook.com/shannon.trask.58)
Jack & Shannon Trask 250-263-4904 • sjtrask@pris.ca**



LOT 54F WESTERN POTTERY



Perrot Cattle Co is pleased to support the Canadian Angus Foundation by donating this beautiful pottery set made by Saskatchewan's own, 'Prairie Mud Pottery'.

We would like to thank everyone for continuing to support this great Fundraiser.



Donated by:

**Perrot Cattle Co. • [facebook.com/annamarie.perrot](https://www.facebook.com/annamarie.perrot)
Greg & Anna Perrot 306-485-7666 • freitagperrot@sasktel.net**



LOT 55F HYCROFT CHINA PLATE

This unique Angus Hycroft China memorabilia is trimmed in 22K Gold with a green color enhanced pattern, featuring an Angus Bull as the subject. In excellent shape. Made by HYCROFT Potteries of Medicine Hat. Hycroft China, formerly the Medicine Hat Potteries (est. 1938), was a major Canadian pottery manufacturer based in Medicine Hat, Alberta, producing popular residential dinnerware and artware from the late 1930s to the 1980s.



Donated by:

**Belinda Wagner
306-537-1518 • bwagner@cdnangus.ca**



LOT 56F BORDER FINE ARTS LIMOUSIN COW FAMILY FIGURINES

Have a look at these porcelain Limousin bull, cow and calf figurines. Created by the Border Fine Arts pottery company in Scotland that was known for its production of high quality, realistic, collectible figurines representing farm animals and life in the British countryside. The company was only in production from 1974-2016 making these figurines very collectible. This Limousin cow family are all in mint condition and come with their original tags and boxes.



Donated by:

M & J Farms • mjsimmentalangus.com

Miles & Bonnie Glasman 204-773-0094 • mjsimmentalangus@gmail.com



LOT 57F CUSTOM WESTERN MIRROR



www.cudlobe.com

One-of-a-kind custom 20 x 30 glass mirror set in a weathered wood frame with hand-wrapped rope detail. Finished in a simple western style that highlights the natural texture and character of the wood.



Donated by:

Cudlobe Angus • cudlobe.com

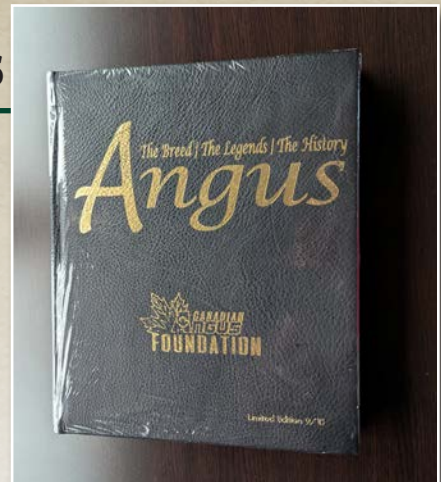
Dyce Bolduc 403-625-0981 • office@cudlobe.com



LOT 58F A, B & C LEATHER HISTORY BOOKS

In 2019, the Canadian Angus Foundation launched *The Breeds, the Legends, the History: Canadian Angus History Book, 2019 Edition*, the first Canadian Angus history book produced since 1985. This year, we're offering the last three limited edition leather-bound books that have not previously been available for purchase numbered 7/10, 8/10, 9/10.

The 560-page full-colour history book contains a comprehensive review of the history of the Angus breed, an overview of Angus in Canada, and 363 Canadian Angus member histories in the members' own words. This book will make you laugh and cry and will make you feel incredibly proud to be part of the Canadian Angus fraternity.



Donated by:

Canadian Angus Foundation • www.cdnangus.ca/foundation

306-537-1518 • bwagner@cdnangus.ca



LOT 59L SMOKED MEAT MEAL AT THE NATIONAL SHOW AT CANADIAN WESTERN AGRIBITION

Let us take care of supper at Agribition so you and your crew can focus on what really matters - Your cattle and your people. Whether you would like to have supper at the barn on Show-day, or on one of the quieter days, or back at the hotel room or at your AirBnB, we have you covered. This catered smokehouse-style meal by Schmitt's Smoked Meats is cooked and delivered straight to your barn or accommodation at Canadian Western Agribition, providing hearty food for hardworking show teams.

Included with this meal is one smoked meat main (e.g., brisket, pulled pork, ribs), one hot side dish (e.g., mac and cheese, baked potatoes), one seasonal vegetable, one homemade dessert and a selection of non-alcoholic beverages. Serves 12 People - Additional servings or variations in content are available upon request at cost if you have a bigger crew to feed. Most dietary needs can be accommodated (i.e., gluten-free, dairy-free). Someone will have to send the pin for their closest door and meet there to get the meal.



Donated by:

MJT Cattle Co. • mjt.ca

The Trefiak Family 780-722-3032 • shannon@mjt.ca



LOT 60L A, B & C MAPLE SYRUP - 3, ONE GALLON PACKAGES

Since the late 1800s, the Sample family of Quebec has produced maple syrup from their maple trees. Starting from the 15th of February until the end of April when most Angus breeders are focused on winter calving, most of the Sample family can be found in the sugar bush or in the sugar house making maple syrup. They have never missed a year of syrup production, and the highest bidder will enjoy this quality Canadian maple syrup produced from more than 100 years of experience and dedication.



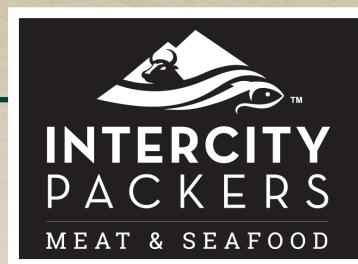
Donated by:

Mac Angus Farms—The Sample Family
450-247-2696 • macangusfarms@gmail.com



LOT 61F SEAFOOD PACKAGE

Intercity Packers is a Canadian company that is committed to serving as the leading supplier of high quality, value-added, and customized meat and seafood solutions across Canada. They aim to be a model of sustainability in the Canadian marketplace. We are thrilled to welcome their second donation of a case of portioned salmon and a case of lobster tails. The high bidder can choose to create delicious surf and pairings or enjoy a multitude of salmon and lobster dishes in combination or on their own.



Donated by:

Intercity Packers Meat and Seafood • intercitypackers.ca
Dustin Bohn 780-220-6327 • dustin.bohn@intercitypackers.ca



LOT 62F MEGAN WEIR COMMISSIONED PRINT, PRINT 25/25

Building the Legacy 11 was the exclusive launch for the new Canadian Angus Foundation commissioned print, "Heading Home" by artist Megan Weir. The original is on display at the Canadian Angus office. The highest bidder will receive print #25, custom framed on fine art paper and signed by the artist.

Megan is a wife, mother, and sixth-generation rancher from Southeastern Alberta who is also a self-taught artist. Her medium of choice is oil paint. Megan describes her style as an expression of her experiences with agriculture combined with her personality.

To see more of her work, look up @meganweirart on Instagram and Facebook, or visit her website www.meganweir.com



Donated by:

**Canadian Angus Foundation • www.cdnangus.ca/foundation
306-537-1518 • bwagner@cdnangus.ca**



LOT 63F ANGELA DAVIDSON RED PRINT

"The Red Angus" was unveiled at the Canadian Angus Association office during Convention 2015. Scotland's James Arnott commissioned the painting from Angela Davidson using his Red Angus bull as the model. The power and detail of the bull is outstanding and literally takes visitors' breath away when they walk into the office and see it for the first, second or tenth time. Canadian Angus secured the rights to market the print in Canada, and you only have one opportunity each year through Building the Legacy to add this masterpiece to your collection.



Donated by:

**Canadian Angus Foundation • www.cdnangus.ca/foundation
306-537-1518 • bwagner@cdnangus.ca**



LOT 64F WENDY RISDALE LOOKING TO THE FUTURE PRINT

As part of the 100th Anniversary celebrations of the Canadian Angus Association in 2005, the Canadian Angus Foundation commissioned Wendy Risdale to complete these two paintings titled "Looking to the Future" and "Master of the Herd". We have only a handful of these prints in the 'vault' and are offering one of each print in this 14th edition of Building the Legacy!

Wendy Risdale is a self-taught artist who started her art career by doing animal portraits in pastels, eventually adding oil and acrylic paintings, wood carvings and jewelry to her portfolio.



Donated by:

**Canadian Angus Foundation • www.cdnangus.ca/foundation
306-537-1518 • bwagner@cdnangus.ca**



WENDY RISDALE LOT 65F MASTER OF THE HERD PRINT

As part of the 100th Anniversary celebrations of the Canadian Angus Association in 2005, the Canadian Angus Foundation commissioned Wendy Risdale to complete these two paintings titled "Looking to the Future" and "Master of the Herd". We have only a handful of these prints in the 'vault' and are offering one of each print in this 14th edition of Building the Legacy!

Wendy Risdale is a self-taught artist who started her art career by doing animal portraits in pastels, eventually adding oil and acrylic paintings, wood carvings and jewelry to her portfolio.



Donated by:

Canadian Angus Foundation • www.cdnangus.ca/foundation
306-537-1518 • bwagner@cdnangus.ca



CJ BROWN LOT 66F REFLECTIONS OF THE FUTURE PRINT

Here is a beautiful CJ Brown to add to your collection, with a unique "Canadian" flair. CJ Brown is an Angus breeder herself and a well-known artist in livestock circles. Her work has been commissioned by many in our sector including both the Canadian and American Angus Association's. You can check out more about CJ on her website at cjbrownstudios.com.



Donated by:

Kajal Latimer
403-537-5604 • klatimer@cdnangus.ca



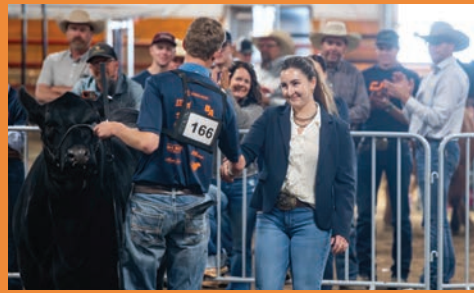
LOT 67F CAF LEGACY SALE CATALOG BACK COVER

Here is your chance to purchase space on the back cover of the 2027 Building the Legacy Sale catalog, an awesome place to promote your program or event. The Building the Legacy Sale catalogue is mailed to over 2600 Canadian Angus members, posted on our website and the websites of our sales staff as well as on social media reaching over 15,000 people on our channels alone. Your ad will cover 2/3 of the back cover, check out the Foundation Scholarship and Award recipients on this year's back cover.



Donated by:

Canadian Angus Foundation • www.cdnangus.ca/foundation
306-537-1518 • bwagner@cdnangus.ca



SHOWDOWN 2026

JULY 16-18, 2026 | AYER'S CLIFF, QC
MOVE IN BEGINS JULY 15 AT 1 PM

The Canadian Angus Foundation will provide travel and trucking bursaries to attend Showdown as well as significant cash prizes and scholarships for the Aggregate Winners.

There will also be three draws made for vouchers to purchase Angus females—one at \$3,000 and two at \$2,000.

All exhibitors will automatically be entered to win!

Visit the Canadian Angus Foundation website at www.cdnangus.ca/foundation for more information and to apply for the bursaries.

For up-to-date Showdown information or to enter online, please visit www.cdnangus.ca/canadian-junior-angus/showdown

Allison Morse, Quebec Director: 819-212-7177
Kylie Willms • President: 306-380-4595
Belinda Wagner • Coordinator: 306-537-1518
or bwagner@cdnangus.ca

Thursday, July 16, 2026

- 11 am • Move in complete
- CJA Annual General Meeting & Orientation
- 12 noon • Lunch
- 12:30 pm • Judging (individual competition – written reasons)
- 1:30 pm • Team Grooming
- 5:30 pm • Supper & Extravaganza

Friday, July 17, 2026

- 8:30 am • Group Photo
- 9:00 am • Showmanship
- 9:00 am–1:00 pm • Print Marketing
- 12 noon • Public Speaking
- 1:00–4:00 pm • Sales Talk
- 2:00 pm • Team Judging (must qualify from individual competition)
- 6:00 pm • Cook-off & BBO

Saturday, July 18, 2026

- 9:00 am • Heifers of Distinction
- 10:00 am • Conformation Classes
- 5:00 pm • Banquet, Awards Presentations, Auction & Dance

return undelivered catalogues to:

Canadian Angus Association
Unit 14 – 620 1st AVE NW
Airdrie, AB T4B 2R3



Investing in Excellence: Scholarship & Award Recipients



The Canadian Angus Foundation functions to preserve and expand the Angus breed for future generations through education, youth development, scientific and market research and historical preservation and restoration.



Arlis Hanson
2025 Brian Good
Memorial Scholarship
First Place Winner



Emma Thomason
2025 Brian Good
Memorial Scholarship
Second Place Winner



Lainie Muir
2025 Dick Turner
Memorial
Scholarship winner



Foundation Legacy Scholarship

2026 Finalists

Pictured from left to right: Greg Pugh (current CAA president) Myles Immerkar (CAA CEO), Emma Fox (placed first), Reese Wildman (second place), Lucia Johnston (placed third), Back row: Kolt Brost and Tanner Lowe (runners-up), Belinda Wagner (CAA Co-ordinator) and Macy Liebreich (Foundation Board member).



Ty Dietrich
2025 Outstanding Young
Angus Breeder



Austin Potts
2025 Junior
Stockman of the Year



Reegan Frey
2025 Robert C.
McHaffie Junior
Ambassador



For more information on scholarships and awards offered by the Canadian Angus Foundation please go to:
www.cdnangus.ca/foundation/scholarships-bursaries-and-awards/