

Hosted by Twin View Livestock Jonus Cattle Ledgerwood Gelbvieh Diamond Z Livestock Diamond Acre Farms
Last Mountain Livestock Braylen Blake Gelbvieh Triple S Cattle Goodview Gelbvieh Classic Cattle Company

FUNCTION AND FINESSE

FEMALE SALE 7.0



October 17, 2025
Driven. Dedicated. Dependable.

SALE TIME 5:00 PM
Parkbeg, Saskatchewan

October 17, 2025 | 5:00 PM
Supper to follow the sale

FUNCTION ^{7.0} AND FINESSE FEMALE SALE

SALE DAY PHONES

Aaron Birch(403) 485-5518
Joe Barnett.....(403) 465-2805
Blair Bentz.....(306) 746-8037
Joe Ness.....(403) 852-7332

SALES STAFF

Don Oberg.....(780) 678-6926
Darwin Rosso.....(306) 690-8916
Walker Murphy.....(306) 434-5982

WATCH AND BID ONLINE

Internet Bidding Available

D | L | M | S

www.dlms.ca

Direct Livestock Marketing Systems

For more information call:
Mark Shologan 780-699-5082 or Purebred Team 780-991-3025

VIDEOS

Videos will be available early October on Cattlevids.ca

TRAVEL

We are conveniently located just 6 miles south of the Trans Canada highway between Moose Jaw and Swift Current on Range Rd 3042 near Parkbeg, Saskatchewan. Google Twin View Livestock for directions.

ACCOMMODATIONS

A block of rooms is held at the Pilgrim Inn in Caronport, SK. The block will be held until October 3rd. Call (306) 756-5002 and use code Fun17. Contact Joe if you need any help with accommodations.

U.S. EXCHANGE

US funds will be accepted at the exchange rate of the day. There is currently a substantial premium on US dollars giving US customers added buying power and value.

SIGHT UNSEEN

We would be happy to visit with you about your interest in any lots. Please contact Aaron or Joe prior to the sale to allow us time to discuss your needs and make suggestions to fit your criteria. Your order will be handled in the strictest confidence with integrity and professionalism. Your satisfaction is 100% guaranteed when you've visited with Joe or Aaron prior to the sale.

DELIVERY

At their convenience, consignors will make every effort to work with purchasers to get females as close as possible to their final destination. For longer distances the seller will work with the buyer to share delivery costs.

LIABILITY & RISK

Although every precaution will be taken to protect the safety and comfort of buyers, the auctioneer or owners assume no responsibility or liability in the event of an accident. Each animal becomes property of the purchaser as soon as sold.

INSURANCE

Call Stockman's Insurance, Larry Toner, at (306) 834-7652 if you require insurance on your purchases.

Welcome to Function and Finesse 7.0! It's difficult to believe we're ready to present our seventh set of Gelbvieh genetics for your appraisal. We are confident this is the best set we've assembled so far! As cattle markets continue to set all new highs, we're called to keep pace with quality that matches the markets.

We are humbled by what Function and Finesse has become. When we began this venture in 2019 we never dreamt it would be where it is today. We are honoured to be a trusted source for high quality Gelbvieh genetics by both established breeders and young producers alike. We work hard to assemble an offering to fit where the industry is headed knowing that if we focus on where we are right now then we have fallen behind. With this seventh group coming together, we see the true mission of this sale come to fruition - to put hard working, maternal oriented, high quality mama cows into the world. Each year, more and more lots meet the Full Circle criteria. We are so proud of the females we have sent to work.

As always, we must give thanks to the group of people who make this event possible. Some of our most trusted friends allow us into their programs to select females for this event. We are excited and proud to welcome Diamond Acre Farms to the team. Stanley and Danielle Andres with their young family have been building a stellar program near Swift Current with genetics primarily from Function and Finesse.

As always the complete set has been managed here at Twin View allowing us to present you with a consistently prepared group. This eases your selection process without sorting through a variety of presentation methods. The cattle are often out grazing to meet their needs. It is possible to buy elite quality, practical, common-sense cattle in this breed and we believe they are here at Function and Finesse.

We remain staunchly dedicated to the most modern practices and each lot is presented with the most in-depth DNA profile possible including parentage verification, polled and colour testing as well as a 100K profile in most cases. We encourage you to follow updates available through the CGA registry for current EPDs.

We would be excited to visit with you before the sale and welcome you to Twin View anytime. The people cattle have brought into our lives is truly the most special part of what we do. We can't wait to see you on Friday, October 17! Function and Finesse is one of a kind. It is a celebration of our breed's leading ladies so be sure to bring your leading ladies along for our hospitality!

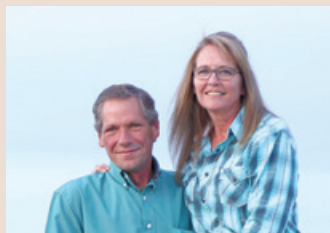
Aaron and Joe



FUNCTION AND FINESSE *Partners*



Goodview Gelbvieh
Blair & Lorie Bentz
(306) 746-8037
Punnichy, SK



**JONUS
CATTLE**

Jonus Cattle
Joe Ness & Brenda Faubion
(403) 852-7332
Airdrie, AB



**LAST
MOUNTAIN
*Livestock***

Last Mountain Livestock
Mark & Glenda Johnson
(306) 725-8198
Garrett Johnson
(306) 725-7154
Levi Johnson
(306) 725-7860
Strasbourg, SK



Triple S Cattle Company
Brett & Krystal Spray
(306) 614-9049
Preeceville, SK



Ledgerwood Gelbvieh
Pete & Samee Charriere
(509) 566-8805
Clarkston, WA



Diamond Z Livestock
Grant & Jacquie Zalinko
(306) 776-2425
Ryan & Kaci Zalinko
(306) 536-6057
Rouleau, SK



Diamond Acre Farms
Stanley & Danielle Andres
(306) 741-0517
Swift Current, SK



Braylen Blake Gelbvieh
Braylen & Carlie Blake
(306) 640-2204
Glentworth, SK



Carson Edwards
(613) 401-6555
Colin Edwards
(613) 504-2410
Cobden, ON

OUR COMMITMENT TO JUNIORS

Every heifer that sells includes our mentorship and support throughout the course of your project. From feeding and show preparation to breeding and daily care, we are here to help!



Lane Wall raised his own 4-H Heifer out of LML Samantha 16K purchased in F&F 4.0



Keegan Little purchased ZAL Diamond Z Marlowe 65M and had a great year.



Mackena Kriger purchased JOE Made In Canada 343M and attended many junior shows.



Bryce and Levi Hicks showed AWB Twin View Rosemary 94L. Ernfold 4-H Champion Female, Swift Current Regional Champion Two Year Old, Swift Current Fair Supreme Champion Purebred Female, CJGA Champion Bred & Owned Female with the heifer calf.



Raleigh Little did a beautiful job showing AWB Twin View Baha 98M.



Kale Mackenzie purchased LML Samantha 41M. Young Ranchman's Reserve Champion Gelbvieh Female



Aspen Blake was CJGA Reserve Champion Heifer calf. Her dam was a purchased through F&F 1.0



Atleigh Burzinski purchased KCC Lovebug Moo-vie 122M and had a great year in 4-H.

THE FUNCTION AND FINESSE FUTURITY SCHOLARSHIP

Excitement for Gelbvieh cattle is growing and we are so excited to see so many young people taking an interest in the breed! The Junior Gelbvieh Show this summer is a great example of how bright our future is. As always, the Function and Finesse group supports any junior member interested in being a part of this breed and we are excited to continue The Function and Finesse Futurity!

Females of any age purchased through Function and Finesse are eligible. Females out of past Function and Finesse purchases are also eligible. All females must be shown by 4-H or Junior members 21 years of age and under and owned by the junior member or their immediate family. You can earn points at any event you attend.

Points can be earned each time an animal is shown from October 15, 2025 - October 1, 2026.

Points are awarded as follows:

- 5 points each time you show
- 2 points if you win your class
- 1 point if you send us a picture

Any animals shown at the Canadian Junior Gelbvieh Show in Stettler next summer will receive double the points for that event only.

The winner will be announced prior to Function and Finesse 8.0 and will receive \$1000.



This logo represents lots which are daughters or granddaughters of previous sale females.



Lot **1**

BLB GOODVIEW BROOK 544N

CDGV190678

BLB 544N

04-Feb-25



BLB Goodview Brook 544N stopped us dead in our tracks during our tour of Goodview pastures. No matter how many tours we do, females of such a high caliber never get old. Blair was upfront in saying she was his favourite heifer calf of the year. That's high praise indeed!

We're excited to make her your first chance at progeny from reigning National Champion Bull, Universal 22L! Brook is a performance oriented female with all the bells and whistles to compete on any stage. Her pedigree combines the great female maker Element with Gracie Gayle and Bar None creating unrivaled potential. Her dam is a truly model female - broody, attractive and maternal. A maternal brother to Brook 544N was a high selling feature in the Goodview pen this spring to RPS Gelbvieh and a sister walks at Goodview. High performing, high maternal value, high quality, Goodview Brook is a next right step in the Gelbvieh breed!

Red Homozygous Polled PB94

Act BW
80

Adj WW
612

JEN BAR NONE J107ET
AWB TWIN VIEW UNIVERSAL 22L ET
AWB TWIN VIEW GRACIE GAYLE 74H

DDGR NOBLE MAN 79B
JORD MISS LULU G25
AWB BIRCH'S THE BOXER 21D
AWB TWIN VIEW GAYLE 78E ET

FLAD FLADELAND ELEMENT 21E
BLB GOODVIEW BROOK 30H
BLB GOODVIEW PLD BROOK

JRI GUNG HO 282C51
FLAD FLADELAND SADIE 28X
BLB GOODVIEW PLD REVOLVER 12Z
ZTM MCCOY 66W BROOK 71Y

CE	BW	WW	YW	MK	TM	MCE
12.6	0.7	62	90	23	56	5



BLB GOODVIEW BROOK 30H
Dam of Lot 1



AWB TWIN VIEW UNIVERSAL 22L ET
Sire of Lot 1



JEN BAR NONE J107 ET
Grandsire of Lots 1, 2 & 14B, Sire of Lots
14A, 18, 19, 20



BLB GOODVIEW MAGNUM 425M
Maternal Brother to Lot 1



Lot **2**

AWB JSJ/DJW/TVL GRACIE GAYLE 14N

CDGV189368

AWB 14N

21-Jan-25



A Gracie Gayle with big numbers, big hair and big colour...you really can have it all! Calving season is always an exciting time but we were over the moon when Gracie Gayle 14N landed under the camera. She was among the most anticipated babies of the winter and she's lived up to the hype!

We've never had such a buzz created by a female as her dam and aunts caused when we offered a choice of three Gracie Gayle females. It was 14N's dam selected by JSJ Livestock and Del Wyatt when she swept the heifer calf divisions that fall. She went on to be competitive as a bred but, as we said all along, her best days are as a mama cow. It's no secret that the Gracie Gayle's are near and dear to our hearts as one of the most potent cow families in the breed. Gracie Gayle 27L is one of most cherished and 14N looks to be following in mama's footsteps. The High Caliber progeny are consistently born easy but also have some frame and extension to them. Long story short...we love this one a whole lot! Gather your friends, shake out the couch cushions and do whatever you can to own her. Consider the investment to rechart the path of your work!

Red Homozygous Polled PB94

Act BW
83

Adj WW
726

DCHD GBG EXCALIBUR 070E
DCHD GBG HIGH CALIBER 161H
DCHD GOLDEN BUCKLE GELV 161B ET

DDGR INNOVATION 120C
DCHD GOLDEN BUCKLE GELV 070W
CCRO CAROLINA EXCLUSIVE 1230Y
DCHD GOLDEN BUCKLE GELV 031T
DDGR NOBLE MAN 79B
JORD MISS LULU G25
AWB BIRCH'S THE BOXER 21D
AWB TWIN VIEW GAYLE 78E ET

CE	BW	WW	YW	MK	TM	MCE
15.5	0.5	81	121	21	59	8

JEN BAR NONE J107ET
AWB TWIN VIEW GRACIE GAYLE 27L ET
AWB TWIN VIEW GRACIE GAYLE 74H



AWB TWIN VIEW GRACIE GAYLE 27L ET
Dam of Lot 2



AWB TWIN VIEW GRACIE GAYLE 74H
Granddam of Lot 1 & 2



AWB TWIN VIEW GAYLE 78E ET
Great Granddam of Lot 1 & 2



DCHD GBG HIGH CALIBER 161H
Sire of Lots 2 & 14B

BBG Willow 114N exhibits significant muscle shape and exceptional width over her loin and hook to pin set for a heifer calf of her age. She has a real presence about her and carries her front third with elevation while on the move. Her dam is a Flagship daughter that originated at the Fir River program and was Braylen's pick of the heifer calves that year. She's a functional, no holes type of female and a great mama. Flagship sold to Cranview Gelbvieh in North Dakota where he saw substantial use with 130 registered progeny in that program. Willow is sired by Hustle, a Sugar son Braylen purchased and had great success with. The calves are impressive! A Hustle daughter was very popular and turned a lot of heads here last year. And a little Sugar in the mix always sweetens the deal. Willow is a real gem with a ton of breed character we know you'll appreciate!



Red Homozygous Polled PB94

Act BW

76

Adj WW

612

AWB TWIN VIEW CROWFOOT 59E
AWB TWIN VIEW HUSTLE 37K ET
AWB TWIN VIEW SUGAR 26F

FRL FIR RIVER FLAGSHIP 305F
FRL FIR RIVER WILLOW 726H
RJD 223S'S WILLOW 65W

STON CRAZY BULL 1C
VV MISS TRUFFLE 66C
AWB BIRCH'S THE BOXER 21D
COX A LITTLE BIT OF SUGAR 24A
DVE DAVIDSON GENUINE 194D
ULL RED OLIVIA 7W
OHF RED ROCK 3R
RJD 38M'S SAPHO 223S



FRL FIR RIVER WILLOW 726H
Dam of Lot 3



AWB TWIN VIEW HUSTLE 37K ET
Sire of Lot 3

CE	BW	WW	YW	MK	TM	MCE
16.7	-2	60	82	20	50	8

AWB Twin View Sugar 130N is a real heart throb that's just as sweet as her name implies. She is exceptional through her front third with a stunning skull design and added elevation out the top of her shoulder. She's built so well in terms of joint construction and we feel strongly she'll be competitive in bred shows a year from now. It's no secret how highly we regard the Sugar cow family. 130N's dam, 56H, was the heifer calf at Sugar 26F's side when she won her world title. The maternal side of her pedigree is more maternal and calving ease oriented while the Angus top side is sheer power and mass. This genetic combo is so consistent with 130N being a close relation to lot 6. Sugar 130N is exactly why Gelbvieh cattle are an ideal compliment to the crossbreeding industry!



Heterozygous Black Homozygous Polled BA50

Act BW

84

Adj WW

603

BLACK RIDGE HARVESTOR 66D
ABOUND HARVESTOR 231K
ABOUND LASSIE 934G

AWB TWIN VIEW CROWFOOT 59E
AWB TWIN VIEW SUGAR 56H
AWB TWIN VIEW SUGAR 26F

S A V HARVESTOR 0338
BLACK RIDGE LEONA 22W
MERIT MERGER 6061D
HILOW LASSIE 71A
STON CRAZY BULL 1C
VV MISS TRUFFLE 66C
AWB BIRCH'S THE BOXER 21D
COX A LITTLE BIT OF SUGAR 24A



AWB TWIN VIEW SUGAR 56H
Dam of Lot 4



AWB TWIN VIEW SUGAR 26F
Granddam of Lots 3, 4 & 18

CE	BW	WW	YW	MK	TM	MCE
13.9	1.4	77	123	22	56	8

JOE Disco Night Club 354N is a real sweetheart who's destined to make a junior very happy before a long and productive career as a mama cow. In terms of show ring appearance, we love Disco for her elevated front third, sweeping belly design and attractive silhouette. With her head cocked, she gives a really great look from the side profile. Typical of the Disco cow family, 354N will have an awesome udder with longevity bred in. The 47X granddam was Reserve National Champion in 2018 and received the highest honour in our breed, Dam of Distinction, SIX TIMES, an honour few cows ever receive once. Throw The Boxer into the maternal pedigree and you've further solidified the ability within 354N. A ¾ sister sold last year to Maple Grove Gelbvieh who had a very similar look to her. Consistency is bred in. Get your groove on!

Red Polled PB94	Act BW 84	Adj WW 584
JRI GUNG HO 282C51 JNA GUNG HO 609J JM GEORGIA 35G	JRI HOSS 293A43 ET JRI MS FRANKIE 282R11 PHG CROWN ROYAL C57 JM DIVA 34D	
AWB BIRCH'S THE BOXER 21D AWB TWIN VIEW DISCO 66G AWB BIRCH'S DISCO 47X	FLAD FLADELAND DJW ROCKM SOCKM AWB BIRCH'S MACY 37A DCSF POST ROCK TOP BRASS ET AWB BIRCH'S DISCO 36U	



AWB TWIN VIEW DISCO 66G
Dam of Lot 5



AWB BIRCH'S DISCO 47X
Granddam of Lot 5



CE	BW	WW	YW	MK	TM	MCE
8	2.5	68	102	24	58	3

AWB Twin View Disco 105N offers a larger outline and longer spine for her age than some. She's got extra muscle expression and impressive depth of body creating the look of a great future mama cow. She hails from the Disco cow family, a group we consistently rely on to put their heads down and get to work. Her own Crowfoot sired dam is no exception, always weaning a big calf in the fall. Disco 105N is sired by our resident Angus bull, Abound Harvester, who is as impressive in the flesh as you'll find. He's all power from end to end but combined with the calving ease of 1G, Disco 105N is a great balance of both. For added consistency she is a 3/ 4 sister to lot 4. This is a really fundamentally sound female with a bright future.

Heterozygous Black Homozygous Polled BA50	Act BW 97	Adj WW 664
BLACK RIDGE HARVESTOR 66D ABOUND HARVESTOR 231K ABOUND LASSIE 934G	S A V HARVESTOR 0338 BLACK RIDGE LEONA 22W MERIT MERGER 6061D HILOW LASSIE 71A	
AWB TWIN VIEW CROWFOOT 59E AWB TWIN VIEW DISCO 1G AWB TWIN VIEW DISCO 87E	STON CRAZY BULL 1C VW MISS TRUFFLE 66C VW TIREE 150T AWB BIRCH'S DISCO 37C	



AWB TWIN VIEW DISCO 1G
Dam of Lot 6



ABOUND HARVESTOR 231K
Sire of Lots 4 & 6



CE	BW	WW	YW	MK	TM	MCE
9	1.4	70	109	20	56	6



lot **7**

AWB TWIN VIEW REBECCA 55N

CDGV189385

AWB 55N

07-Feb-25

AWB Twin View Rebecca 55N is another one who has been in the running for 'favourite heifer calf'. We love this one for her true spring of rib, depth of flank and overall mass while maintaining an attractive look and killer side profile.

Rebecca is absolutely kid broke and already has a show record placing second in class at the National Junior Show with our good buddy, Colter Hauberg, on the halter. Rebecca is your first kick at a Dunbar female and we can't say enough good things about his first calf crop. We're thrilled to have him here at Twin View and you'll be hearing much more about him in the coming months. Rebecca's dam is a moderate, tidy uddered two year old who did an awesome job in her first effort. There's a lot of calving ease in this pedigree but Rebecca still posted an adjusted weaning weight over 700 pounds. Show heifer, front pasture female, maybe a donor down the road - we believe Rebecca has the goods to do it all!

Red Homozygous Polled PB94

Act BW
73

Adj WW
712

BGGR 0185H
CIBS DUNBAR 3962L
FMH ELLIE 901F 9620

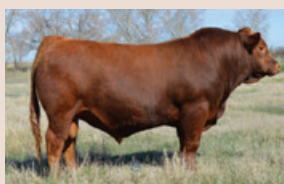
JLSL BONANZA 929G
AWB TWIN VIEW REBECCA 63L
WRS WRS MISS JWOW 164J

GGGE 3G DIE CAST 637D
BGGR 6147C
AT EASE A357
FMH D62 MS SILVER REVA
EGL CHICO LOCO E7190
JLSL 383A
SLC TOUCHDOWN 203D
WRS WRS BLACK REBECCA 64E

CE	BW	WW	YW	MK	TM	MCE
14.3	-0.5	68	93	24	55	6



AWB 63L
Dam of Lot 7



CIBS DUNBAR 3962L
Sire of Lots 7 & 16



JLSL BONANZA 929G
Grandsire of Lots 7, 20, 21 & 24
Sire of Lots 8 & 28



Rebecca and Colter Hauberg at the Junior
Gelbvieh Show

ZAL Diamond Z Temptress 43N is a moderate framed, extra stout diva with an eye catching front third given the amount of body and mass she carries behind that. She patterns much the same as her tanky mother. The Temptress cow family has a long history at Milne Gelbvieh. A Bonanza daughter with extra hair and an easy doing look, we feel that Temptress 43N could be competitive in the show ring as a bred and anticipate her first baby at side being as big as she is. With plenty of calving ease in her genetic makeup, your mating options are numerous. We know you'll be tempted the moment you see her!

Homozygous Black Homozygous Polled PB88 **Act BW** 73 **Adj WW** 619

EGL CHICO LOCO E7190
JLSL BONANZA 929G
JLSL 383A

SLC VIPER 7E
AWB TWIN VIEW TEMPTRESS 19H
GCC TEMPTRESS 44F

JOB DANELL TD CHICO LOCO 28Y
ABLT MISS IMPACT 5Y
JDPD TIME TRAVELER 450X
JLSL ROXXY

SLC VELOCITY 14C
SLC TOASTY 10C
JOE THIRD EDITION 423Z
GCC TEMPTRESS 54B



AWB TWIN VIEW TEMPTRESS 19H
Dam of Lot 8



SLC VIPER 7E
Grandsire of Lots 8 & 19



CE	BW	WW	YW	MK	TM	MCE
18	-4	56	78	19	47	7

LML Jane 39N is among the largest outlined heifer calves in the offering and she carries herself with obvious pride and authority. She's strong topped and has a swooping belly design giving her a desirable side profile. She tracks much the same as her mother in terms of added stretch and frame. The 15J dam is a liver red Class Act daughter back to Boxer, a combination that's clicked many times at Last Mountain. 12F, the maternal grandmother, is an absolutely gorgeous female we've admired for years and who had a daughter of her own come through Function and Finesse. As an added bonus Jane boasts performance and carcass data at the top of the breed. This is a big time cow family ready for you to tie into!

Red Homozygous Polled PB94 **Act BW** 100 **Adj WW** 732

BLB GOODVIEW HITCH 23H
BLB GOODVIEW KRAUS 242K
FLAD FLADELAND FLURRY 50F

AWB TWIN VIEW CLASS ACT 188E
LML JANE 15J
LML FAYE 12F

JRI SECRETARIAT 285E78
DDN BELLY RIVER FANCY 8138F
JRI GUNG HO 282C51
FLAD FLADELAND MIDNIGHT 102Y

AWB BIRCH'S BOJANGLES 24C
AWB BIRCH'S SONIC 169C
AWB BIRCH'S THE BOXER 21D
ZTM MCCOY 164A PRETTY LADY 67C



LML JANE 15J
Dam of Lot 9



LML FAYE 12F
Granddam of Lot 9



CE	BW	WW	YW	MK	TM	MCE
6.9	4.1	83	123	19	61	3

AWB Twin View Essence 76N is one we've been admiring more and more each day. She's long bodied and balanced from end to end with an attractive presence and plenty of cow power to back her. Her mother is a high performing Valhalla daughter who has had two maternal sisters sell through Function and Finesse. Essence 76N is sired by a bull named Fugitive who was born here out of a Ledgerwood cow. He offered massive calving ease values with light birth weights and we love the way he's put together. We decided to not put him in the bull sale so we could use him ourselves then marketed him privately to Red Willow Ranch. Ask Gail and Jesse about his calves - they're thrilled just like we are! Essence will be highly competitive in a black halter and a wicked mother cow to boot!



Homozygous Black Homozygous Polled PB94 **Act BW** 86 **Adj WW** 682

DDGR SMOOTH CRIMINAL 258J
JLSL TWIN VIEW FUGITIVE 3185L
JLSL 424B

AWB TWIN VIEW VALHALLA 45H ET
AWB TWIN VIEW ESSENCE 98L
AWB TWIN VIEW ESSENCE 38E

MJBC FRANCHISE F806
DDGR 263G
JLSL YOUNG GUN
JLSL DIAMOND
JOB DANELL TD CHICO LOCO 28Y
JSJ BAH 35B
SLC TOUCHDOWN 166W
AWB BIRCH'S ESSENCE 311A



AWB TWIN VIEW ESSENCE 98L
Dam of Lot 10



JLSL TWIN VIEW FUGITIVE 3185L
Sire of Lot 10, Service Sire to Lot 23

CE	BW	WW	YW	MK	TM	MCE
11	0.3	63	98	19	53	7



BJS Triple S Nani 63N is a sleek and attractive female with an appealing later birthdate that can be an asset in the show ring. Her dam is an absolute smoke-show that was purchased in dam through Function and Finesse 2.0. Sparkles is a well loved Mayweather daughter that's as good natured as you can make one. She has the high quality foot and udder design we consistently expect from the Mayweather progeny. She is sired by the Hawkeye bull from Goodview who's an Exact Combination back to a Prairie Hills cow so this is certainly a well known pedigree. Nani's grandam, 115G, had a heifer calf in last year's sale who was also sired by Hawkeye so this mating has added predictability. Nani is worth a close look come sale day!



Red Homozygous Polled PB94 **Act BW** 80 **Adj WW**

RWG EXACT COMBINATION E409
BLB GOODVIEW HAWKEYE 7H
PHG MISS PAPARAZZI C45

AWB TWIN VIEW MAYWEATHER 39F ET
BJS TRIPLE S SPARKLES BJS 1J
AWB TWIN VIEW MYSTIQUE 115G

RWG RIGHT COMBINATION C506
RWG HADIE 3505
DTKF EMOTIONS SUCKER PUNCH
PHG PAPARAZZI A68
AWB BIRCH'S THE BOXER 21D
AWB BIRCH'S NATALIE 22Z
FRL FIR RIVER CROSBY 806A
AWB BIRCH'S MYSTIQUE 178C



BJS TRIPLE S SPARKLES BJS 1J
Dam of Lot 11



AWB TWIN VIEW MYSTIQUE 115G
Granddam of Lot 11

CE	BW	WW	YW	MK	TM	MCE
13	0.2	66	72	23	56	3

AWB Twin View Reata 89N is quite possibly the most seamlessly designed female in the whole deal. While not the heaviest muscled, she is so smooth, so striking, so well built and maintains ample breed character. Her dam is equally beautiful and is one of the females we selected to form a pretty special partnership. Calvin & Donna Beamish are among the most generous, amazing humans and the opportunity to work with them was not one we could pass up. Reata 89N is sired by a Drake son who just happens to be a maternal brother to the awesome Lexxus 58L in lot 14. Both sides of Reata's pedigree include bolted on udders, awesome foot quality and tons of maternal ability. The Reata cow family is just getting started and this is your chance to be in on the ground floor of something we think will be pretty exciting!

Red Polled PB94	Act BW 83	Adj WW 699
BLB GOODVIEW PLD DRAKE AWB TWIN VIEW DRAKE 40K AWB TWIN VIEW LEXXUS 22H	SLC OUTBACK 142X BLB GOODVIEW PLD MAXINE 10Z AWB BIRCH'S THE BOXER 21D FLAD LEXXUS 128X	
SA BIRCH'S CAPONE 100D BLC REATA 11L BLC ZIG ZAG 111Z	LCR DILLINGER 908A SA BIRCH'S BERYL 38A VV WINTER STAR 42W BLC SHAWNA 111S	



BLC REATA 11L
Dam of Lot 12



AWB TWIN VIEW DRAKE 40K
Sire of Lot 12, Maternal Brother to Lot 14A

CE	BW	WW	YW	MK	TM	MCE
10	-0.3	63	84	23	52	7



AWB TWIN VIEW COMIN IN HOT 51M
Sire of Lot 13 Embryos



AWB BIRCH'S GRACE 178D
Dam of Lot 13 Embryos



BLC HOT DONNA 77J
Granddam of Lot 13 Embryos

AWB Birch's Grace 178D is our ideal female. She's built so perfectly, super maternal, highly fertile and productive, big bodied and perfectly sound in her foot and udder design. Her production record is impeccable and she continues to find ways to outdo herself. Her heifer calf this year is simply gorgeous with a big time future. We offered her here last year as the lot 1 female and were thrilled when Calvin and Donna Beamish chose to work with us on her. As an exciting twist we mated her to one of our most talked about bulls last year who just so happens to have originated at Beamish Land & Cattle. Comin' In Hot was used heavily in our AI work this spring and we can't wait to see the results. The consistency of Grace 178D with the cutting edge anticipation of Comin' In Hot means major opportunity! Selling 3 embryos with a fourth as your guarantee. Available to Canada and the US.

AWB TWIN VIEW VENTURE 94K ET AWB TWIN VIEW COMIN IN HOT 51M BLC HOT DONNA 77J	SLC VIPER 7E JSJ BAH 35B SA BIRCH'S CAPONE 100D BLC HOT DONNA 277F
VV WILLY WONKA WILL 44W AWB BIRCH'S GRACE 178D AWB BIRCH'S GRACE 0203Y	OHF RED ROCK 3R LC WANDERING PANSY 483P PV CUTTHROAT 44W BLACK ANGUS # 71

CE	BW	WW	YW	MK	TM	MCE
12	1	79	103	20	55	7


14A
AWB TWIN VIEW LEXXUS 58L
CDGV182520
AWB 58L
10-Feb-23

Red Homozygous Polled PB94

Act BW
78

Adj WW
634

Adj YW
929

 DDGR NOBLE MAN 79B
JEN BAR NONE J107ET
 JORD MISS LULU G25

 AWB BIRCH'S THE BOXER 21D
AWB TWIN VIEW LEXXUS 22H
 FLAD LEXXUS 128X

 KKC NOBILITY 123Y
 DDGR HOPE 245W
 JRI IN PURSUIT 017B50
 JORD MISS LULABELLE B25
 FLAD FLADELAND DJW ROCKM SOCKM
 AWB BIRCH'S MACY 37A
 WRS SILENT STAN 20S
 FLF PEACHES 112P

CE	BW	WW	YW	MK	TM	MCE
9	1.4	79	123	24	63	5

AWB Twin View Lexxus 58L is a truly stunning beast we're so proud to have carry our name! She is exceedingly complete from end to end. The udder quality in this cow family is superb, the foot quality matches and dispositions are perfect. Lexxus 58L has upped the ante and is as good as those traits have ever been. She also boasts a big time set of carcass numbers ranking in the top 10% for Carcass Weight, Ribeye Area and Marbling. As these Bar None daughters come into production, they impress us more than ever. They are outstanding mama cows with ample milk and production ability. When 58L calved in February we knew something special was taking shape. Lexxus 80N or Lily as we call her, matches mama to a T. She was a hot commodity at our Open House where person after person asked, "What is that heifer calf?!" She is a High Caliber daughter, a calving ease sire whose ability to produce females has increased his worth immensely.

Now for the twist ~ We're offering complete possession and interest in Lexxus 80N OR half interest with negotiable possession in Lexxus 58L. Should the fortunate purchaser select the cow, half of all future production and expenses are shared with us. Flushes will be to mutually agreed upon sires or flushes will alternate between the new owner and Twin View. We'd be happy to visit with you about the details but we're pretty easy to work with and we'd be happy to give references should you have questions about partnering with us.

We have big plans for this duo and can't wait to have you along for the ride. They will campaign this fall and we believe they will be highly competitive. We can promise that no matter where you are in the world, the trip to Parkbeg will seem short and be worth it when you lay eyes on Lexxus and Lily!

AI bred May 22 to CIBS Dunbar 3962L. Preg tested safe to AI date.



Lot 14B **AWB TWIN VIEW LEXXUS 80N**

CDGV189398

AWB 80N

17-Feb-25

Red Homozygous Polled PB94

Act BW
72

Adj WW
750

CE	BW	WW	YW	MK	TM	MCE
15	-0.4	77	115	22	62	8

DCHD GBG EXCALIBUR 070E
DCHD GBG HIGH CALIBER 161H
 DCHD GOLDEN BUCKLE GELV 161B ET

JEN BAR NONE J107ET
AWB TWIN VIEW LEXXUS 58L
 AWB TWIN VIEW LEXXUS 22H

DDGR INNOVATION 120C
 DCHD GOLDEN BUCKLE GELV 070W
 CCRO CAROLINA EXCLUSIVE 1230Y
 DCHD GOLDEN BUCKLE GELV 031T
 DDGR NOBLE MAN 79B
 JORD MISS LULU G25
 AWB BIRCH'S THE BOXER 21D
 FLAD LEXXUS 128X



AWB TWIN VIEW LEXXUS 22H
Dam of Lot 14A



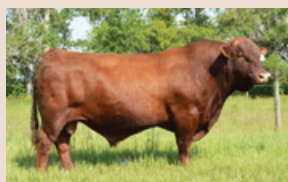
FLAD LEXXUS 128X
Granddam of Lot 14A



JORD MIS LULU G25
Granddam to Lots 1, 2, 14A, 14B, 18, 19 & 20



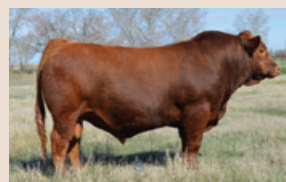
AWB TWIN VIEW DRAKE 40K
Maternal Brother to Lot 14A, Sire of Lot 12



JEN BAR NONE J107 ET
Sire of Lots 14A, 18, 19, 20 Grandsire of Lots 1, 2 & 14B



DCHD GBG HIGH CALIBER 161H
Sire of Lots 2 & 14B



CIBS DUNBAR 3962L
Sire of Lots 7 & 16, Service Sire to Lot 14A



AWB BIRCH'S THE BOXER 21D
Grandsire to Lots 1, 2, 3, 4, 5, 9, 11, 12, 14A, 14B & 18



We are so fortunate to have had our cattle lead us to incredible friendships around the world. One of those relationships began with the Nixon family of Weetalabah Cattle in Australia when they came to Canada. Several years ago after much conversation around the next steps for their program, Julie felt they needed an outcross donor female to anything already in Australia. Enter Diamond Z Natalie's Kamila 16K ET! We loved this heifer calf from the get go and of course were big fans of her pedigree. We struck a deal to partner on her and purchased her through Function & Finesse 4.0. She was second in class at Agribition as a bred and has developed into a brilliant mama cow just like we knew she would. Her first son was a popular calving ease candidate that sold to successful commercial customers and now her second at bat will sell along with her. Nixon's flushed 16K twice and have calves on the ground in Australia as well. And now she's safe to Bar None!

Natalie 45N is one of your first chances at a Dunbar female. We're so excited about the job he has done in his first calf crop; Easy calving, high performing, good natured and awesome profiles. Like her mama, this is the type of female you'll like more all the time and who'll get better every day you own her.

AI bred April 24 to JEN Bar None J107. Exposed April 27 - May 31 to JEN Bar None J107. Preg tested safe to AI date.

Lot 15 ZAL DIAMOND Z NATALIE'S KAMILA 16K ET

CDGV179708

ZAL 16K

10-Mar-22



Heterozygous Black Homozygous Polled PB94 **Act BW** **Adj WW** **Adj YW**
ET 642

JOB DANELL TD CHICO LOCO 28Y
AWB TWIN VIEW VIKING 25H ET
JSJ BAH 35B

CK HUSTLER 17T
AWB BIRCH'S NATALIE 22Z
RPS X-GAL 128X

ELK CK CRAZY HORSE 138P
MCFG TD MYA 210T
BNC MR RED HOT X1163
DTJ L011 MISS GOLD BAR S518
CK TRIPLE X 45M
CK LOTTIE 29L
DCC STOUT 22S
RPS NATALIE 22N



AWB TWIN VIEW WEETALABAH 64M
Son of Lot 15



AWB BIRCH'S NATALIE 22Z
Dam of Lot 15

CE	BW	WW	YW	MK	TM	MCE
11.5	1.8	68	91	16	50	6

Lot 16 AWB TVL WEETALABAH NATALIE 45N

CDGV189381

AWB 45N

02-Feb-25

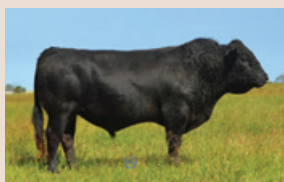


Heterozygous Black Homozygous Polled PB94 **Act BW** **Adj WW**
86 624

BGGR 0185H
CIBS DUNBAR 3962L
FMH ELLIE 901F 9620

AWB TWIN VIEW VIKING 25H ET
ZAL DIAMOND Z NATALIE'S KAMILA 16K ET
AWB BIRCH'S NATALIE 22Z

GGGE 3G DIE CAST 637D
BGGR 6147C
AT EASE A357
FMH D62 MS SILVER REVA
JOB DANELL TD CHICO LOCO 28Y
JSJ BAH 35B
CK HUSTLER 17T
RPS X-GAL 128X



AWB TWIN VIEW VIKING 25H ET
Sire of Lot 15



JOB DANELL CHICO LOCO 28Y
Grandsire to Lot 10, 15, 16, 17 & 23

CE	BW	WW	YW	MK	TM	MCE
14	1.6	62	87	23	57	5



Lot **17**

AWB TWIN VIEW BAHA 3K X JEN BAR NONE J107ET

Embryos

AWB Twin View Baha 3K found her way in the donor pen this spring based on a number of factors. Her phenotype is impeccable - sweeping rib and high volume, attractive skull and proper joint construction. Her foot and udder quality is absolutely textbook - as good as you'll find. She combines all the best traits of her pedigree in a tidy package along with a very respectable data set. Her production career is just getting warmed up but early indications are that she's destined for greatness. Her first daughter is gorgeous and her second is here for you. As you analyze the pages of this catalog, you've no doubt seen the quality Bar None has created and the impact he is having on our work. This mating should be extremely complimentary and we're excited to have some for ourselves. Selling 3 embryos with a fourth as your guarantee. Available to Canada and the US.

DDGR NOBLE MAN 79B
JEN BAR NONE J107ET
JORD MISS LULU G25

KHR GRIZZLY RED 39F
AWB TWIN VIEW BAHA 3K
AWB TWIN VIEW BAHA 9H ET

KKC NOBILITY 123Y
DDGR HOPE 245W
JRI IN PURSUIT 017B50
JORD MISS LULABELLE B25
MCCA CORNHUSKER RED 524C
KHR 703T
JOB DANELL TD CHICO LOCO 28Y
JSJ BAHA 35B



JSJ BAHA 35B
Granddam of Lots 10, 15, 17, 18, 19 & 23



KHR GRIZZLY RED 39F
Grandsire of Lots 17 & 18, Service
Sire to Lot 19

CE	BW	WW	YW	MK	TM	MCE
12	1.1	79	122	20	58	7

Lot **18**

AWB TWIN VIEW BAHA 56N

CDGV189386

AWB 56N

07-Feb-25

AWB Twin View Baha 56N excited us right out of the gate and was an early front runner for 'favourite heifer calf' this spring. We've always had a soft spot for Baha females with their added softness and dimension. Combining Baha 3K with Iconic made perfect sense to us. He is a son of the legendary World Champion, Sugar 26F and female maker Tiree. Iconic impressed from an early age and has proven to calve extremely well. We said all along he would be a female maker and he heard the assignment leaving 75% heifer calves. We love them! Not extreme in any way but so balanced not only in their phenotype but also on paper. By merging Baha, Sugar, Grizzly Red, and The Boxer - there's no guesswork here. Baha 56N has an exciting future ahead and we can't wait to see the success you experience with her!

Red Homozygous Polled PB94

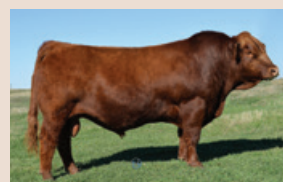
Act BW
91

Adj WW
700

WT TIREE 150T
AWB TWIN VIEW ICONIC 32L ET
AWB TWIN VIEW SUGAR 26F

KHR GRIZZLY RED 39F
AWB TWIN VIEW BAHA 3K
AWB TWIN VIEW BAHA 9H ET

DEG PESO 286P
DTJ FANCY NANCY 506N
AWB BIRCH'S THE BOXER 21D
COX A LITTLE BIT OF SUGAR 24A
MCCA CORNHUSKER RED 524C
KHR 703T
JOB DANELL TD CHICO LOCO 28Y
JSJ BAHA 35B



AWB TWIN VIEW ICONIC 32L ET
Sire of Lot 18



AWB TWIN VIEW SUGAR 26F
Granddam of Lots 3, 4 & 18

CE	BW	WW	YW	MK	TM	MCE
11.5	2.2	74	107	21	58	6



Lot **19**

SVF B'S MIRACLE 35M ET

CDGV186813

SVF 35M

02-Mar-24



SVF B's Miracle 35M ET is a hairy, dark red daughter of Bar None out of the influential Baha 1H donor cow with an impressive EPD profile. She's wide pinned, deep flanked and built like a tank!

When the crew at Classic stepped up to buy 1H, we were thrilled when they let us be a part of her. She has 23 registered progeny including a National Champion son in Bold Ruler, a futurity selection and sale features. She remains an elegant and highly maternal female who exceeds expectations. We've worked together on different flushes and this mating to Bar None is an ideal one. We love the way Miracle is put together with a flat shoulder, bold forerib, and ideal hook to pin set. She's patterns so much like her beautiful mama! We hate the cliché that she's better than her picture - but quite honestly - she blows this picture away! The baby on board is a big time opportunity in itself - safe to Grizzly Red for an early baby! This is a female with unlimited opportunity and true genetic potency. She will chart her own course!

AI bred May 4 to KHR Grizzly Red 39F. Preg tested safe to AI breeding.

Red Homozygous Polled PB88

Act BW
74

Adj WW

Adj YW

DDGR NOBLE MAN 79B
JEN BAR NONE J107ET
JORD MISS LULU G25

KKC NOBILITY 123Y
DDGR HOPE 245W
JRI IN PURSUIT 017B50
JORD MISS LULABELLE B25
SLC VELOCITY 14C
SLC TOASTY 10C
BNC MR RED HOT X1163
DTJ L011 MISS GOLD BAR S518

SLC VIPER 7E
AWB TWIN VIEW BAH 1H ET
JSJ BAH 35B

CE	BW	WW	YW	MK	TM	MCE
14	-1	66	105	24	57	9



AWB TWIN VIEW BAH 1H ET
Dam of Lot 19



JSJ BAH 35B
Granddam of Lots 10, 15, 17, 18, 19 & 23



AWB TWIN VIEW BOLD RULER 20K ET
Maternal Brother to Lot 19



AWB TWIN VIEW BOOM TOWN 18M ET
Full Brother to Lot 19



Lot 20 AWB TWIN VIEW MACY 84M

CDGV186098

AWB 84M

01-Apr-24

AWB Twin View Macy 84M is a truly stunning beast who will be a contender on most wish lists! We strongly believe she has the goods to be a front runner in any challenge you throw at her and are truly wondering why we don't have a black halter lined up for her this fall.

Macy is a Bar None daughter with a stacked pedigree on maternal side as well. Her dam is a maternal sister to The Boxer out of the old Macy 37A cow who continues to knock it out of the park at 12 years of age. The cow family is small because they've been cranking out bull calves. This is the first Macy we've ever shared with the industry. She is so deep sided, has massive spring of rib, beautiful joint construction and correct angles. Whether you choose to analyze her in the flesh or on paper with a stellar EPD profile, Macy 84M will command your attention! Her early mating to Alpine is an exciting ticket to ride. She will be a substantial asset to the breed!

AI bred April 14 to Ivers Alpine L351 ET. Exposed April 27 to June 23 to Ivers Alpine L351 ET and AWB Twin View Iconic 32L ET. Preg tested safe to AI breeding.

Red Homozygous Polled PB94

Act BW
50

Adj WW
634

Adj YW
934

DDGR NOBLE MAN 79B
JEN BAR NONE J107ET
JORD MISS LULU G25

JLSL BONANZA 929G
AWB TWIN VIEW MACY 49J
AWB BIRCH'S MACY 37A

KKC NOBILITY 123Y
DDGR HOPE 245W
JRI IN PURSUIT 017B50
JORD MISS LULABELLE B25
EGL CHICO LOCO E7190
JLSL 383A
VV YOICKS 107Y
JC PEMBINA MACY 623M

CE	BW	WW	YW	MK	TM	MCE
16.9	-3.6	67	108	19	53	8



AWB TWIN VIEW MACY 49J
Dam of Lot 20



AWB BIRCH'S MACY 37A
Granddam of Lot 20



JEN BAR NONE J107 ET
Sire of Lots 14A, 18, 19 & 20 Grandsire of
Lots 1, 2 & 14B



IFG IVERS ALPINE L351 ET
Service Sire to Lots 20, 24 & 28

Lot 21

DAF MACY WYNN 4M

CDGV186658

DAF 4M

10-Jan-24

DAF Macy Wynn 4M is a deep sided, soggy, stout made female with all the goods to leave her mark. She's a heavy payweight type of female setting down a beautiful udder. Diamond Acre Farms purchased her sire, Initiation, to moderate birthweights and help put functional females into their growing herd. A maternal sister to him sold in Function and Finesse 1.0 and is now a donor cow. Macy Wynn is bred to a stout made calving ease sire at Diamond Acre who is out of a past F&F purchase and JRI Gung Ho. Macy Wynn's pedigree is built on solid, functional, foundation type females and we're sure she'll follow suit. We felt she was the perfect first consignment for the Diamond Acre Farms crew and we know you'll have her marked in your catalog too. She's easy to love!

Exposed March 26 - May 30 to DAF Mickey 15M. Observed bred April 14 and preg checked safe to that date. Due January 20.



Heterozygous Black Homozygous Polled PB94

Act BW

88

Adj WW

677

JLSL BONANZA 929G
AWB TWIN VIEW INITIATION 107J
AWB BIRCH'S LUSTER 88D

JRI GUNG HO 282C51
DAF DAF WINDY WYNN 1J
AWB TWIN VIEW WYNN 8G

EGL CHICO LOCO E7190
JLSL 383A
SA BIRCH'S OFF ROAD 160Y
AWB BIRCH'S LUSTER 308A

JRI HOSS 293A43 ET
JRI MS FRANKIE 282R11
BLB GOODVIEW PLD DRAKE
AWB TWIN VIEW WYNN 135E



DAF WINDY WYNN 1J
Dam of Lot 21



AWB TWIN VIEW INITIATION 107J
Sire of Lot 21

CE	BW	WW	YW	MK	TM	MCE
11.9	-0.7	58	96	20	49	6

Lot 22

JLSL 463M

AMGV1609269

JLSL 463M

17-Feb-24

JLSL 463M is an extremely sound, moderate framed mama in the making with a stellar EPD profile. A direct daughter of walking herdsire, Pacesetter, 463M was on our must have list from the bred heifer pasture. The number of cows who reside at Ledgerwood not carrying the JLSL tattoo is very small. 463M is the third daughter of H021 who was a purchase through the highly regarded Eagle Pass dispersal. H021's first two daughters are active at Ledgerwood and we distinctly recall the first who we saw on tour in Washington as a truly elite heifer calf. Offering a unique and outcross pedigree, 463M is safe early to her AI breeding to proven calving ease sire, Easy Rider. To sweeten the deal, she is believed to be carrying a heifer calf.

AI bred April 26 to JLSL Easy Rider 9160G ET. Exposed April 28 to June 10 to ZAL Diamond Z Laramie 32L. Preg tested safe to AI breeding.



Homozygous Black Homozygous Polled BA75

Act BW

70

Adj WW

641

Adj YW

DLW TPG FRONTRUNNER 2510F
LRSF PACESETTER J124
LRSF LRL SARAH E78

DCH BIG ANDY D672
EGL ELLUNA H021
EGL ELLUNA F604

DLW TPG JACKPOT 7551B ET
DLW MS WARDON 2510Z ET
CCRO CAROLINA LEVERAGE 3214A
LRSF SARAH A76
DCH HILLE Y109
DCH HILLE 4266
EGL ROUNDHOUSE B019
EGL ELLUNA A574



LRSF PACESETTER J124
Sire of Lot 22



JLSL EASY RIDER 9160G ET
Service Sire to Lots 22, 29 & 30

CE	BW	WW	YW	MK	TM	MCE
15	-0.9	74	117	23	60	10

lot 23

AWB TWIN VIEW RAINBOW 77M

CDGV186095 AWB 77M 13-Mar-24

AWB Twin View Rainbow 77M is a buxom blonde with a great disposition, stout muscle shape, sweeping rib design and attractive presence. The Rainbow cow family has been good to us over the years noted for short gestations, bolted on udders and productivity. 77M's performance numbers are off the charts and her actual weaning and yearling results follow suit. Her dam is a gorgeous female who earned Dam of Merit status in her first year of eligibility. A maternal sister to 77M was the heifer Kelsy & Skyler Schmitz purchased as part of our donation to the Stollery Children's Hospital. Rainbow 110K went on to enjoy a successful show career including Grand Champion Female at the Ernfold 4-H Achievement Day and she's well loved at the Schmitz Ranch. Rainbow 77M is bred early to Fugitive, a bull who has blown us away with his first calf crop. They come easy with tons of vigour and take off like wild fire! This combination should be potent! Taste the Rainbow!

AI bred April 21 to JLSL Twin View Fugitive 3185L. Exposed April 27 to June 23 to Ivers Alpine L351 ET and AWB Twin View Iconic 32L ET. Preg tested safe to AI breeding.

Red Homozygous Polled PB94	Act BW	Adj WW	Adj YW
	93	692	926
JOB DANELL TD CHICO LOCO 28Y	ELK CK CRAZY HORSE 138P		
AWB TWIN VIEW VALHALLA 45H ET	MCFG TD MYA 210T		
JSJ BAHHA 35B	BNC MR RED HOT X1163		
	DTJ L011 MISS GOLD BAR S518		
BLB GOODVIEW PLD DRAKE	SLC OUTBACK 142X		
AWB TWIN VIEW RAINBOW 80H	BLB GOODVIEW PLD MAXINE 10Z		
AWB TWIN VIEW RAINBOW 3F	FRL FIR RIVER BIG'N'RICH 438Y		
	AWB BIRCH'S RAINBOW 123D		



AWB TWIN VIEW RAINBOW 80H
Dam of Lot 23



AWB TWIN VIEW VALHALLA 45H ET
Sire of Lot 23, Grandsire of Lot 10

CE	BW	WW	YW	MK	TM	MCE
5.9	3.8	80	114	20	62	5



lot 24

AWB TWIN VIEW SCANDAL 36M

CDGV186068 AWB 36M 09-Feb-24

AWB Twin View Scandal 36M is the type of female who will quietly go about her business year after year and never cause a moment's trouble. She won't be the first one you notice when you tour the heifers but when you really analyze her, this is a no holes female. We purchased her mother from our great friends at Covington Gelbvieh in Colorado and she's a faithful farm favourite here. Scandal is a Vendetta daughter, a bull who has proven himself as an udder improver with moderate calving ease and consistent dark colour. His first daughters calved this spring and they are great mamas in moderate packages. It's been said the mark of a good breeding piece is when they out produce themselves. Our prediction is that Scandal 36M does that every time she calves!

AI bred April 15 to Ivers Alpine L351 ET. Exposed April 27 to June 23 to Ivers Alpine L351 ET and AWB Twin View Iconic 32L ET. Observed bred May 8. Preg tested safe to observed breeding date. Twin View will cover the costs to DNA parent verify the calf.

Red Homozygous Polled PB94	Act BW	Adj WW	Adj YW
	79	587	812
JLSL BONANZA 929G	EGL CHICO LOCO E7190		
AWB TWIN VIEW VENDETTA 99J	JLSL 383A		
AWB TWIN VIEW PATSY 127F	BLB GOODVIEW PLD DRAKE		
	AWB BIRCH'S PATSY 119C		
DCHD GOLDEN BUCKLE GELV 067Y	DCH HILLE R126 ROY		
COV MISS 676D	DCHD GOLDEN BUCKLE GELV 067S		
NCOV MISS 065X	JCOV MR 0028K		
	NCOV MISS DOLLY 655S		



COV MISS 676D
Dam of Lot 24



AWB TWIN VIEW VENDETTA 99J
Sire of Lot 24

CE	BW	WW	YW	MK	TM	MCE
9.3	0.5	61	78	22	55	4





Lot 25 LML JULIE 49M

CDGV186381

LML 49M

30-Mar-24

LML Julie 49M is the first bred female to be offered from the developing Last Mountain program. For years, we've been blown away by the heifer calves when we tour. This year was no different but we couldn't deny the quality in the bred heifer pasture.

Julie 49M hails from the long running Julie family; cornerstones of our program here at Twin View. Her dam was the last female we sold at the Wish-list before starting Function and Finesse and every time we see her, we regret selling her. She's a gorgeous female with a production record to match! We've tried to get a Julie daughter from the Last Mountain team but Mark has them on his extremely short 'untouchable' list. 49M is so broody, sound structured and oozes maternal prowess. She's mated to Mighty Machine, a Grizzly Red son who has us on the edge of our seats. Big things are coming! This is a mama cow in the making and one that will be easy to find sale day!

Exposed April 15 to July 15 to LML Mighty Machine 1M. Preg tested 80 days on July 22. Due early to mid February.

Red Homozygous Polled PB94	Act BW 100	Adj WW 726	Adj YW
----------------------------	----------------------	----------------------	---------------

CE 10	BW 2.1	WW 73	YW 98	MK 25	TM 61	MCE 5
-----------------	------------------	-----------------	-----------------	-----------------	-----------------	-----------------

BLB GOODVIEW HITCH 23H
BLB GOODVIEW KRAUS 242K
FLAD FLADELAND FLURRY 50F

LCR DILLINGER 908A
AWB TWIN VIEW JULIE 138E
AWB BIRCH'S JULIE 10B ET

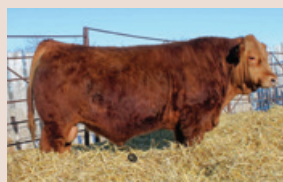
JRI SECRETARIAT 285E78
DDN BELLY RIVER FANCY 8138F
JRI GUNG HO 282C51
FLAD FLADELAND MIDNIGHT 102Y
LCR URBAN COWBOY 638U
LCR WAYNETTE 908W
JRI HEAVY EQUIPMENT 125M3
AR JULIE 14J



AWB TWIN VIEW JULIE 138E
Dam of Lot 25



LML JAYCE 24J
Maternal Sister to Lot 25



BLB GOODVIEW KRAUS 242K
Sire of Lot 25



LML MIGHTY MACHINE 1M
Service Sire to Lot 25

BLB Goodview Maureen 439M is the next edition of Maureen females in Function and Finesse. The Maureen family has become synonymous with this event but 439M ups the ante! We love this female from end to end but her front third is so attractive and she blends seamlessly from skull to neck to shoulder. Few bulls have remained relevant the way SLC Outback 142X has. His daughters are ideal females and his sons have experienced renewed popularity with their undeniable maternal capability. Maureen 439M is stacked with Outback on both sides of her pedigree solidifying her future as a sure fire matron!

Corral bred May 11 to FRSQ Foursquare Marchand 63M. Preg tested safe.

Red Homozygous Polled PB94	Act BW 98	Adj WW 663	Adj YW 960
SLC OUTBACK 142X BLB GOODVIEW KINGSTON 221K DDN BELLY RIVER FANCY 8138F	CES DECKA OUTBACK 75S SFL SLC SUE 325P DDN DRIVER 133D DDN 36D		
SLC OUTBACK 142X BLB GOODVIEW PLD MAUREEN ET BBB BROOK MAUREEN 107M	CES DECKA OUTBACK 75S SFL SLC SUE 325P LTC RIDGE STAR HOLMAN 123H BBB BROOK HOPE 186H		



BLB GOODVIEW PLD MAUREEN ET
Dam of Lot 26



BLB GOODVIEW KINGSTON 221K
Sire of Lot 26

CE	BW	WW	YW	MK	TM	MCE
3	2.6	63	84	20	51	0



JLSL 4103M is a uniquely constructed female with an equally unique pedigree. She is bold in her rib shape and muscle pattern but offers an extremely tidy and elongated front third. She is sired by a past walking sire at Ledgerwood, Moose, who was a long bodied, well rounded, multi purpose bull. 4103M's dam became a two time Dam of Distinction with 11 progeny registered. You may well remember 4103M's sister who was a past highlight in Function and Finesse 3.0. She sold to JSJ Livestock and now resides at RPS Gelbvieh as a coming 13 year old cow still on the go. 4103M is bred for the long haul and is sure to have a productive career ahead!

AI bred April 26 to JLSL Easy Rider 9160G ET. Exposed April 28 to June 10 to ZAL Diamond Z Laramie 32L. Preg tested 30 days on June 30. Due mid March.

Red Polled PB88	Act BW 80	Adj WW	Adj YW
FMH 2020 MR AT EASE 510C CMK MOOSE CMK D2	BNC AT EASE A357 TJB 105X MS VELVET BROWN CORONADO 27266 CMK PEPPY		
JLSL BB'S LESTER JLSL YUKON JLSL UMATILLA	WVR WEAVER LESTER 27L WMW LECLAIR 115L MCFG 155R ET JLSL 6H		



JLSL ADDISON 307A
Maternal Sister to Lot 27



CMK MOOSE
Sire of Lot 27

CE	BW	WW	YW	MK	TM	MCE
8	2.7	73	98	25	61	3





Lot **28**

AWB TWIN VIEW TRUFFLE 23M

CDGV186059

AWB 23M

31-Jan-24

AWB Twin View Truffle 23M is a liver red beauty we've had ear marked for Function and Finesse for over a year. We love the added dimension, length of spine, and attractive design she offers. You'll love her when you see her in the flesh but we really think her best days lie ahead as she matures.

Her dam has more than paid her way here with successes like Crowfoot and Holyfield, a favourite three year old cow and a salty heifer calf at side this year. Bonanza progeny continue to be honest, hard working cattle. We continue to dip in from time to time on the right cow and Truffle 23M is a great example why. Her early mating to Alpine is exciting and we can't wait to show him off this fall. He is the real deal! High quality truffles aren't cheap but they're worth every penny. Truffle 23M will be worth the investment!

AI bred April 15 to Ivers Alpine L351 ET. Exposed April 27 to June 23 to Ivers Alpine L351 ET and AWB Twin View Iconic 32L ET. Preg tested safe to AI breeding.

Red Homozygous Polled PB94

Act BW
86

Adj WW
599

Adj YW
788

CE
10.8

BW
1.2

WW
66

YW
92

MK
16

TM
49

MCE
4

EGL CHICO LOCO E7190
JLSL BONANZA 929G
JLSL 383A

JRI STAR BUCKS 254Y82
VV MISS TRUFFLE 66C
DF TRUFFLE 22T ET

JOB DANELL TD CHICO LOCO 28Y
ABLT MISS IMPACT 5Y
JDPD TIME TRAVELER 450X
JLSL ROXXY
JRI TOP SECRET 253M75 ET
JRI MS COCOA 254S72
BTI EXTRA 2106K ET
AR JENNY 47P



VV MISS TRUFFLE 66C
Dam of Lot 28



JLSL 383A
Granddam of Lots 7, 8, 20, 21, 24 & 28



AWB TWIN VIEW CROWFOOT 59E
Maternal Brother to Lot 28, Grandsire to
Lots 3 & 4



AWB TWIN VIEW HOLYFIELD 63F
Maternal Brother to Lot 28

Lot 29

JLSL 482M

AMGV1609217

JLSL 482M

19-Feb-24

JLSL 482M is a truly ideal female no matter how you choose to analyze her. She's attractive, broody, big volumed and sound with user friendly data. Her dam came from the widely respected Kicking Horse Ranch reduction sale and is a five time Dam of Merit. The paternal side of 482M's pedigree reads like a 'Who's Who' of the Ledgerwood program. She is sired by True Grit who is a direct son of Phoenix, a true matriarch of the program still going strong at 15. If you pull up 482M on Digital Beef, you'll find FIVE Dams of Merit or Distinction in her direct pedigree. If you're in the market to add a sure fire matriarch to your arsenal, JLSL 482M is bred to be a big shooter! She's due early to Easy Rider and believed to be carrying a bull calf. Your next herd bull awaits!

AI bred April 26 to JLSL Easy Rider 9160G ET. Exposed April 28 to June 10 to ZAL Diamond Z Laramie 32L. Preg tested safe to AI breeding.

Heterozygous Black Polled PB94	Act BW 73	Adj WW	Adj YW
JDPD TIME TRAVELER 450X JLSL TRUE GRIT 9164G ET JLSL PHOENIX	RTRM HEADLINE EGL SARA R450 JLSL UNDESCRIBABLE JLSL SABRINA		
KHR 82B KHR 668D KHR 067X	KHR 01Z GOTT MISS CHAIN 60X KHR 18U KHR 903J		



JLSL TRUE GRIT 9164G ET
Sire of Lot 29



KHR 668D
Dam of Lot 29

CE	BW	WW	YW	MK	TM	MCE
16	-0.8	63	100	24	55	9



Lot 30

JLSL 456M

AMGV1609248

JLSL 456M

15-Feb-24

JLSL 456M offers a totally unique pedigree to all Canadian cattle in a larger framed, homozygous polled and black package. She is the result of the first and only natural calf crop by Danell Bruiser 43K. He was the \$26,000 US high seller from Danell's Diamond D Gelbvieh to Ledgerwood who injured himself in the first season. 456M's dam is a two time Dam of Merit with two sons selling through the Ledgerwood sale. The mating to Easy Rider will come easy and could well be your next herdsire! 456M is believed to be carrying a bull calf and we have no doubt rapid ROI is coming for her new owner!

AI bred April 26 to JLSL Easy Rider 9160G ET. Exposed April 28 to June 10 to ZAL Diamond Z Laramie 32L. Preg tested safe to AI breeding.

Homozygous Black Homozygous Polled PB94	Act BW 85	Adj WW	Adj YW
JOB DANELL PAY PAL 12H JOB DANELL BRUISER 43K JOB DANELL SUSIE 35F	JOB DANELL PAYGRADE 68E JOB DANELL JOSEPHINE 33C BBDM BOLTON PAY DAY 45C JOB DANELL SALLY 23Y		
JLSL YOUNG GUN JLSL 879F JLSL 422B	JLSL WEIGHT MAKER EDR EARLY 207R DLW GRANITE 654Y ET JLSL UNDERCOVER		



JOB DANELL BRUISER 43K
Sire of Lot 30



JOB DANELL PAY PAL 12H
Grandsire of Lot 30

CE	BW	WW	YW	MK	TM	MCE
10	1.4	84	132	22	64	5





Lot 31 ZAL DIAMOND Z MY GIRL 48M

CDGV187415 ZAL 48M 23-Feb-24

ZAL Diamond Z My Girl 48M is a soft made, ideal footed, high capacity female who makes herself known in the group - largely because she'll be licking you. She's massively constructed in terms of mass and muscle in a moderate package laying down a perfect udder with ideal teat size and placement.

If disposition ranks high on your list of selection tools, there are none you can rank higher than My Girl! Her dam is now a three time Dam of Merit with four daughters in production including one who sold in Function and Finesse to Kelsy Schmitz. My Girl is sired by Bullseye from the Gustin program who has matured into a moderate framed, stout, proven herdsire at Diamond Z leaving an impressive set of offspring. Due mid February with a polled, black baby of her own, My Girl has the look of a functional, easy doing mother cow.

AI bred May 8 to JKGF All American J109 and May 9 to DDGR Fully Loaded 12H. Exposed May 10 to July 16 to BLB Goodview Max 400M. Preg tested safe to AI dates. Diamond Z will cover the costs to DNA parent verify the calf.

Homozygous Black Homozygous Polled BA75
Act BW 82 **Adj WW** 617 **Adj YW** 808

CE	BW	WW	YW	MK	TM	MCE
10	-1.4	63	93	30	61	5

CTR JACKPOT 8660F ET
DDGR BULLSEYE 50K
 DDGR 364F

DAR PURE POWER 401P
ZAL DIAMOND Z FEELS SO RIGHT 95F
 DM LOLA 21B

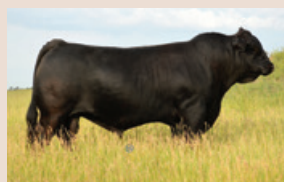
DVE DAVIDSON JACKPOT 74Z
 CTR 198L
 AT EASE A357
 DDGR 286D
 WFG FLYING H EXCLUSIVE
 MAVIS 206M
 CONNEALY IN FOCUS 4925
 DM LOLA 8Z



ZAL DIAMOND Z FEELS SO RIGHT 95F
 Dam of Lot 31



ZAL DIAMOND Z JEWEL 12J
 Maternal Sister to Lot 31



DDGR BULLSEYE 50K
 Sire of Lot 31



CTR JACKPOT 8660F ET
 Grandsire of Lot 31



2024 Agribition Reserve Champion Female, she sold here in 6.0

Success with FUNCTION AND FINESSE Females'



2023 National Champion, Herdsire at Golden Buckle Gelbvieh



2024 National Champion, Herdsire at Goodview Gelbvieh



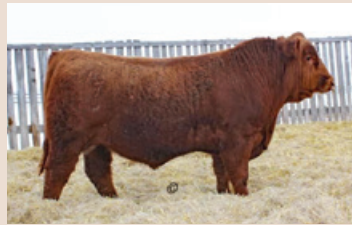
Son of Lot 15, Herd Sire at reputable commercial producer



Herdsire for Braylen Blake Gelbvieh



Herdsire for Triple S Cattle



Herd Sire at JSJ Livestock & McCoy Cattle Co



Herdsire for Keriness & Jonus



Herdsire for Diamond Acre Farms



National Bull Calf Champion, Herdsire for Keriness & Jonus



Herdsire for Last Mountain Livestock



Herdsire for Brittain Farms



Herdsire for Triple S Cattle

FUNCTION AND FINESSE GUARANTEE



Sale lots are DNA parent verified to both parents where possible and homozygous polled/black tested where applicable. Most lots will have Genomically Enhanced EPDs.



Sale lots proudly carry orange Gelbvieh RFID buttons



Sale lots have been managed under the guidelines of Verified Beef Production Plus



Sale females are backed by strong cow families



Rations for sale females have included a full mineral program.



Sale females have been developed to be fit, not fat. With them being developed together there is no need to push them to look better than other sale heifers. They have access to pasture and are kept active for longevity.



Driven. Dedicated. Dependable.

FUNCTION
AND FINESSE **FEMALE**
SALE 7.0