



SATURDAY
MARCH 22
2025

FARMGATE TIMED AUCTION



SIXTH ANNUAL
INTEGRITY

SPECKLE PARK
& RED ANGUS
BULL SALE

VIEWING LOCATION: MCALEER RANCH, SOUTH OF UNITY 27KM, 1KM WEST

MCALEER RANCHING

306-228-9402 OR 306-228-1498

WOLF LAKE SPECKLE PARK

780-812-9250



WOLF LAKE FIELD READY 52F



RAVENWORTH KRAKEN 505J



WOLF LAKE JACKPOT 10J



NOTTA 151A CAUSE N EFFECT 309C



RED EYE HILL MAMA'S BOY 23J



RED YCLC GUTS N GLORY 175G

REFERENCE

Sires



**SPECKLE PARK
& RED ANGUS
BULL SALE**

- doing the right thing even when no one is

Watching

We would like to welcome all our past, present and future buyers to the Sixth Annual Integrity Speckle Park and Red Angus Bull Sale. This year, for the first time, we have the McAleer Red Angus bulls in the sale. All bulls sell by DLMS farm-gate timed auction on March 22, 2025 with the soft close at 7pm CST. If you're unsure of how to bid online, we can assist you to make it easy. If you don't like to bid online, we can bid for you to make sure you get the bull of your choice. All the sale bulls will be located at McAleer Ranch on sale day so come check them out and enjoy a meal, a drink and a visit.

As sale partners we are proud to present this group of quality bulls. We have strived to use the best most consistent genetics available to produce bulls that'll work. We love and believe in the Speckle Park breed and all the benefits that come with them. Our tried and true Red Angus genetics will give you the confidence to buy. We've been able to sell many bulls into the commercial marketplace as well as our own steers and follow through to watch how they succeed. We believe in the consistency and quality that reaches back from generation to generation in the bulls we have for sale. We have confidence that these bulls will go out and work for you. They'll be able to put on miles to cover all the cows, stay in reasonable shape, winter easily and be ready to do so for many years. We truly enjoy the positive feed back we get from our customers.

We hope you can make it sale day, March 22, to McAleer Ranch to check out the sale offering. Give anyone of us a call and tell us what you're looking for and we will assist you with the knowledge of our animals. As a sales team we strive to bring you the very best. We have the integrity to stand behind every animal we sell so you can bid and buy with confidence. We have a great selection of bulls for everyone's needs and budget. We look forward to seeing you sale day.

Integrity Sale Partners

Wolf Lake Speckle Park

Dan & Heather Brundige

780-812-9250

Box 7536

Bonnyville, AB T9N 2H8

d_hbrundige@yahoo.ca

www.wolflakespecklepark.com

McAleer Ranching

C Speckles

Curtis & Terri McAleer

306-228-9402

Box 925 Unity, SK

S0K 4L0

ctmcaleer@sasktel.net

D.A.M. DOTS Ranch

Dustin & Brittany McAleer

306-228-1498

Box 2038 Unity, SK

S0K 4L0

mcaleerd@hotmail.com

McAleer Ranching

**Curtis & Terri
 McAleer
 306-228-9402**



**Dustin, Brittany
 Clayton & Brielle
 McAleer
 306-228-1498**

We'd like to thank you for taking the time to look through our catalogue and view our offering. We are excited to offer our Red Angus bulls through the sale this year. We had the opportunity to tour Jensons herd in 2020 and after seeing Bobs attention to detail in making functional females we made an agreement to purchase 45 registered Red Angus cows. We purchased a group of cows with great feet, tremendous udders, hardiness, calving ease and that are structurally correct. We have been successfully selling our Red bulls private treaty the past 3 years and to simplify our lives we decided to put them in the sale this year. We are proud to say we run a commercial herd that we use our own bulls on. We calve our commercial cows starting April 15, out on pasture only checking them once or twice a day. We know how our bulls produce and it gives us the confidence to say they'll work for you. Our bulls come from a cow herd that works. We don't baby our purebred cows we make them work for us and they are culled effectively to remove any problems. We wouldn't sell you anything we wouldn't use in our own herd and behind every bull is a good footed good uddered mama cow we'd love to show you. We pride ourselves in raising and selling hardy animals that will help improve your herd. If you're interested in one of our bulls or our program we'd be more than happy to show you our herd and talk cattle. Don't hesitate to give us a call. We look forward to hearing from you and hope to see you sale day!

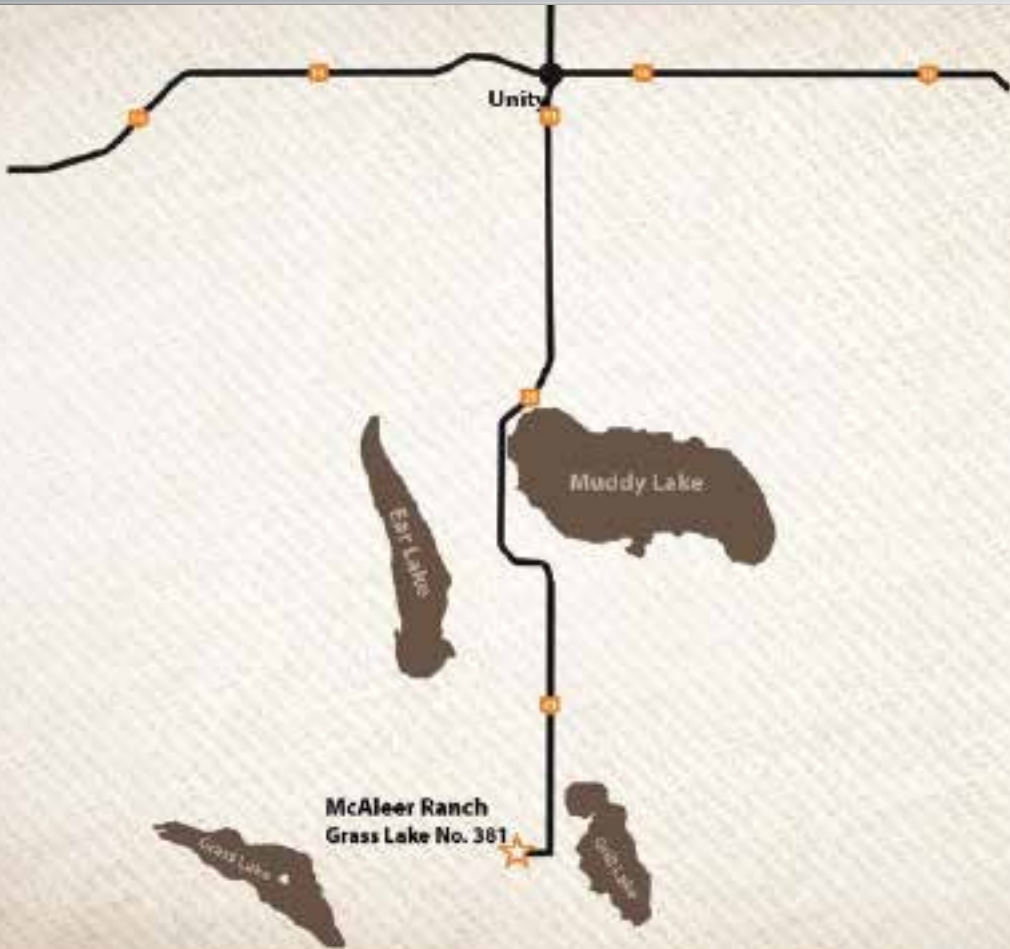
Wolf Lake Speckle Park



**Dan, Heather
 Lily, Luke & Melody
 Brundige
 780-812-9250**

First off, we would like to thank everyone who has supported our program with purchasing bulls and females from us over the past years. We wouldn't be anywhere without you and we cannot thank you enough. It is an honour for us to see our genetics working in herds throughout Canada and around the world. Speckle Park have proven themselves over and over to be a superior carcass quality animal. We have sold a lot of beef off the farm and we are always hearing that this is the best beef our customers have ever tasted. You have to taste it to believe it but just a warning, there is no going back! The feed conversion of the Speckles and the liveliness of their calves make them the ideal cross. As the years progress you really get to know what works and what doesn't work. In today's economics we need cattle that are built to last. We are very proud of the bulls we have on offer this year. Each one is backed up by a strong maternal cow family that have proven track records for consistency. We are always open for herd tours. Hope to see you on sale day. Give us a call with any questions and bid with confidence.

The Brundige Family



Directions

for viewing location

Mar. 22

South from Unity, SK on HWY 21 for 27KM,
Turn West on TWP 374.
McAleer Ranching is the first place on the right. Second drive way to the big red barn.



Timed Auctions Made Easy

Timed Auction Sale: _____

SALE WILL CLOSE AT 7PM CST
Cattle will be on display in pens for your visual appraisal.
Video footage of every animal selling is available to view on DLMS.com prior to the sale for online bidding.

Preview of Offering: _____

**Come early and view the lots we have on offer.
Enjoy a meal and refreshments on us.
We look forward to getting reacquainted with old friends and making new ones.
Thank you from all of us!**

On Offer:

**19 Yearling Speckle Park Bulls
12 Yearling Red Angus Bulls**

TERMS AND CONDITIONS

TERMS: The Terms are cash, cheque or e-transfer payable sale day, unless prior arrangements have been made with the owners. Every animal sells to the highest bidder.

PEDIGREES: Each registered animal will carry papers used by Canadian Speckle Park Association. Proper transfer instructions must be given at settlement.

GUARANTEE: Each animal becomes the purchaser's risk immediately after the animal is sold.

INSURING YOUR PURCHASE: If you have a problem, we want to know so we can make it right. All bulls are semen tested prior to the sale. Testicle measurements & weights will be available sale day. All heifers will be palpated. **WE STRONGLY RECOMMEND INSURING YOUR PURCHASES.**

INSURANCE: Insurance will be available sale day through:
Canadian Farm Insurance Corp. Melissa Stenger 1-403-664-1148
Canadian Farm Insurance Corp. Heather Barr 1-780-853-7067
Stockman's Insurance Larry Toner 306-834-7652

LIABILITY: All persons attending this sale do so at their own risk. The contributors, staff, employees and facility management assume no liability should an accident occur.

DELIVERY: Every assistance will be given to help get your purchase home. Free Delivery up to 200km from sale site.

ANY BULLS RETURNING TO CONTRIBUTORS MUST BE INSURED. Bulls can be kept for a time at consigners for an agreed upon cost. Contact owners for information. All deliveries at seller's earliest convenience.

ERRORS: All announcements at sale time, written or oral, supersede any written matters in the catalogue.

WOLF LAKE SPECKLE PARK



WOLF LAKE MICHELANGELO 5M

DHB 5M / UNR20922 / Feb 5, 2024

RAVENWORTH INVICTUS 103C
RAVENWORTH KRAKEN 505J
 RAVENWORTH PRAIRIE LILY 122B
 WOLF LAKE COMMANDER 9C
WOLF LAKE DESTINY 23D
 CODIAK NORA GNK 75Z

BW	205D	FEB. 22, 2025 YW
80lbs	652lbs	1190lbs

What more to say then this guy is a masterpiece! If you're looking for a black bull with some length, style and performance to go with it, then look no further. Some extra frame on this bull but still keeping the thickness of his sire. Reserve the right to draw in-herd semen at buyers convenience.



LOT 1

COLOR	MYOSTATIN	POLLED
HOMO BLACK	NON CARRIER	-

WOLF LAKE MERCENARY 2M

LJB 2M / CAN20954 / Jan. 18, 2024

RIVER HILL 26T YAGER 99Y
WOLF LAKE FIELD READY 52F
 NOTTA PHO-FINISH 54P

 RIVER HILL 60W LINE DRIVE 54Z
WOLF LAKE EMERALD 30E
 REDNECK RANCH'S SCARLET 1S

BW	205D	FEB. 22, 2025 YW
70lbs	632lbs	1075lbs

A smooth made Field Ready son with some stretch that will make a great heifer bull. 2M's dam and maternal sisters are great producing females with beautiful udders.

LOT 2

COLOR
EDED
MYOSTATIN
NON CARRIER
POLLED
PP



WOLF LAKE SPECKLE PARK



LOT 3

WOLF LAKE MOUNTBATTEN 18M

DHB 18M / CAN20936 / Feb. 15, 2024

COLOR

EDED

MYOSTATIN

NON
CARRIER

POLLED

PP

RAVENWORTH INVICTUS 103C
RAVENWORTH KRAKEN 505J
RAVENWORTH PRAIRIE LILY 122B

JSF TRADE SECRET 11A
WOLF LAKE ESSENCE 29E
JSF ESSENCE 2B

BW	205D	FEB. 22, 2025 YW
78lbs	615lbs	1005lbs

If you're looking for a heifer bull than this is your guy. Low birth weight, smooth front end and beautiful neck extension. Back to the great Trade Secret on the dam's side, a cow with another great udder and lots of milk.



LOT 4

WOLF LAKE MONTGOMERY 20M

DHB 20M / CAN20938 / Feb 17, 2024

COLOR

EDED

MYOSTATIN

NON
CARRIER

POLLED

PP

SRAVENWORTH INVICTUS 103C
RAVENWORTH KRAKEN 505J
RAVENWORTH PRAIRIE LILY 122B

RIVER HILL 12X ZAAR 7Z
RAVENWORTH ASPEN 118C
SPOTS 'N SPROUTS 31A

BW	205D	FEB. 22, 2025 YW
82lbs	589lbs	1030lbs

Big demand lately for black Speckle bulls. The dam of this guy has produced some greats over the years from WOLF LAKE BOB 24E, WOLF LAKE FRED 43F and our latest show bull WOLF LAKE LEVIATHAN 56L.



LOT 5

WOLF LAKE MANCHESTER 14M

DHB 14M / UNR20932 / Feb. 12, 2024

COLOR

EDED

MYOSTATIN

NON
CARRIER

POLLED

PP

RAVENWORTH INVICTUS 103C
RAVENWORTH KRAKEN 505J
RAVENWORTH PRAIRIE LILY 122B

MOOVIN ZPOTZ UNTOUCHABLE 4U
MOOVIN ZPOTZ ARIZONA 5A
CLEAR VIEW MILKY WAY 204P

BW	205D	FEB. 22, 2025 YW
92lbs	669lbs	1080lbs

Another bull we really like that has some stretch and depth of flank. The Arizona cow comes with a unique pedigree. A real bull maker, she gave us her 10th bull calf this spring and is still going strong at 12 years of age.

WOLF LAKE SPECKLE PARK/ MCALEER RANCHING

WOLF LAKE MAXIMILLIAN 21M

DHB 21M / UNR20939 / FEB 20, 2024

RAVENWORTH INVICTUS 103C
RAVENWORTH KRAKEN 505J
 RAVENWORTH PRAIRIE LILY 122B
 WOLF LAKE DIEFENBAKER 14D
WOLF LAKE FOLLOW-A-LONG 56F
 WOLF LAKE COME-A-LONG 5C

BW	205D	FEB. 22, 2025 YW
95lbs	604lbs	1035lbs

Very similar in type to his sire, 21M bull may be the thickest in our pen. Out of our "A Long" cow family known for lots of milk and quiet dispositions.

LOT 6

COLOR

-

MYOSTATIN

NON
CARRIER

POLLED

PP



MCALEER RANCHING



D.A.M. DOTS MAGNUM 69M

DAM 69M / CAN 21087-PT / JAN 29, 2024

WOLF LAKE FRED 43F
WOLF LAKE JACKPOT 10J
 JSF ESSENCE 2B

 C SPECKLES BUCKAROO BOB 1B
MOOVIN ZPOTZ EDETH 69E
 MOOVIN ZPOTZ BLACKBETTY 89B

BW	205D	FEB. 21, 2025 YW
82lbs	580lbs	1140lbs

Magnum draws a ton of attention in the pen. He is one cool looking bull with a wide top, big gut, tons of meat and a solid structure.

His picture perfect dam makes this bull an easy pick if you're wanting to build females. We would be willing to help show Magnum if the new owner would like us to.

LOT 7

COLOR
EDED

MYOSTATIN
CARRIER

POLLED
PP





LOT 8

COLOR

-

MYOSTATIN

-

POLLED

-

D.A.M. DOTS MONSTER 651M

DAM 651M / UNR21008 / JAN 4, 2024

CODIAK PUTNAM GNK 61Y
BLACK DIAMOND 61Y POSTER BOY
 RIVER HILL 25Y ALEXIA-JADE 59A

HWY.4 SPECKLE PARK 20K
SPOTS 'N SPROUTS 21U
 JANE OF P.A.R. 12J

BW	205D	FEB. 21, 2025 YW
80lbs	664lbs	1275lbs

Monster is a beast of a bull. If you're looking to add frame size or smash down the scales at the auction mart this guy will do it. He is the heaviest bull in our pen. His dam 21U has the most registered calves out of any cow I've owned. The consistency in quality is something to appreciate.



LOT 9

COLOR

-

MYOSTATIN

-

POLLED

-

D.A.M. DOTS MINER 05M

DAM 05M / Applied / JAN 27, 2024

STAR BANK 82U ROYAL FLESH 101Y
NOTTA 101Y BLACK CAP 151A
 NOTTA 50S JANETTE 5W

WRANGLER MR PERFECT 8D
RIVER HILL 8D HIGH ROLLER 05H
 RIVER HILL 68L CINDER 5X

BW	205D	FEB. 21, 2025 YW
95lbs	524lb	940lbs

Here is a square and solid made Black Cap son. Like so many other Black Cap sons, Miner is built correct to work hard and last.



LOT 10

COLOR

-

MYOSTATIN

-

POLLED

-

D.A.M. DOTS MAXWELL 2M

DAM 2M / Applied / JAN 31, 2024

STAR BANK 82U ROYAL FLESH 101Y
NOTTA 101Y BLACK CAP 151A
 NOTTA 50S JANETTE 5W

SPOTS 'N SPROUTS ADIKIA 112A
D.A.M. DOTS EBONY 2E
 SPOTS 'N SPROUTS 14X

BW	205D	FEB. 21, 2025 YW
76lbs	542lbs	1035lbs

Here is a bull who we've kept an eye on all year. He's smooth and correct enough to use on heifers yet powerful enough to produce top quality calves on cows.

D.A.M. DOTS MIND BLOWER 36M

DAM 36M / Applied / JAN 31, 2024

LOT 11

STAR BANK 82U ROYAL FLESH 101Y
NOTTA 101Y BLACK CAP 151A
 NOTTA 50S JANETTE 5W

RIVER HILL 12X A'MAN 94A
D.A.M. DOTS DEB 36D
 SPOTS 'N SPROUTS 21U

BW	205D	FEB. 21, 2025 YW
93lbs	506lbs	1040lbs

Mind Blower is off of one of our most easy keeping cows. He's long and smooth made to add on the pounds without giving up calving ease.

COLOR

-

MYOSTATIN

-

POLLED

-



D.A.M. DOTS MARVEL 630M

DAM 630M / CAN 20975-PB / JAN 13, 2024

LOT 12

NOTTA 101Y BLACK CAP 151A
NOTTA 151A CAUSE N EFFECT 309C
 NOTTA 300X THETA 11A

MOOVIN ZPOTZ CAMARO 6X
MOOVIN ZPOTZ ALLY 16A
 COLD CREEK UNITY 23U

BW	205D	FEB. 21, 2025 YW
98lbs	540lbs	1115lbs

This Cause N Effect son is long made and will add some extra frame to his calves. He is an ET calf that had continued to impress since day 1. We are using a full brother, FROST, in our herd and he has given exceptional calves.

COLOR

EDED

MYOSTATIN

NON
CARRIER

POLLED

PP



C SPECKLES MOZZA 09M

CTM 09M / Applied / JAN 24, 2024

LOT 13

STAR BANK 82U ROYAL FLESH 101Y
NOTTA 101Y BLACK CAP 151A
 NOTTA 50S JANETTE 5W

CODIAK OSCAR GNK 8S
CODIAK DESTINYS SONG GNK 9Z
 STYALS PASSION STAR 15P

BW	205D	FEB. 21, 2025 YW
86lbs	593lbs	1060lbs

Carrying on in the footsteps of his Grand Champion half-brother, Cause N Effect. With a larger scrotal and built to travel and get the job done.

COLOR

-

MYOSTATIN

-

POLLED

-





LOT 14

COLOR
-
MYOSTATIN
-
POLLED
-

C SPECKLES MIGUEL 1M

CTM 1M / Applied / FEB 12, 2024

WOLF LAKE FRED 43F
WOLF LAKE JACKPOT 10J
JSF ESSENCE 2B

RIVER HILL LINE DRIVE 54Z
C SPECKLES FIRE 1F
CODIAK UNIQUE GNK 8R

BW	205D	FEB. 21, 2025 YW
78lbs	620lbs	1150lbs

1M is a solid all around prospect. A hard one not to keep. Thickness, Length, and Structure! Win, win!



LOT 15

COLOR
EDED
MYOSTATIN
-
POLLED
PP

C SPECKLES MOONSHINE 14M

CTM 14M / Applied / JAN 21, 2024

WOLF LAKE FRED 43F
WOLF LAKE JACKPOT 10J
JSF ESSENCE 2B

MOOVIN ZPOTZ CAMARO 6X
MOOVIN ZPOTZ ANNIE 14A
D.L.R. ELLE 36T

BW	205D	FEB. 21, 2025 YW
85lbs	550lbs	950lbs

Off the dam of world champion Cora , with carcass data to back him up. A bull that will work in any scenario.



LOT 16

COLOR
EDED
MYOSTATIN
NON CARRIER
POLLED
-

C SPECKLES MAGNUS 37M

CTM 37M / Applied / JAN 30, 2024

SIX STAR 82U ROYAL FLESH 101Y
NOTTA 101Y BLACK CAP 151A
NOTTA 50S JANETTE 5W

D.A.M. DOTS 94A ELECTRIC 31E
C SPECKLES HIGHLIGHT 37H
PURA VIDA ANAROSA 43A

BW	205D	FEB. 21, 2025 YW
68lbs	528lbs	1040lbs

Like all our bulls, great leg structure for covering ground. Yet extremely smooth with calving ease written all over him!

C SPECKLES MARCELO 43M

CTM 43M / Applied / FEB 27, 2024

STAR BANK 82U ROYAL FLESH 101Y
NOTTA 101Y BLACK CAP 151A
 NOTTA 50S JANETTE 5W

WATTLE GROVE SMOKE AND MIRRORS
COLGAN'S KAUAI 43K
 CODIAK COOKIE GNK 19A

BW	205D	FEB. 21, 2025 YW
88lbs	641lbs	986lbs

Grand Champion Cause N Effect's half-brother continues the tradition of length and carcass!

LOT 17

COLOR

EDED

MYOSTATIN

NON
CARRIER

POLLED

PP



C SPECKLES 310M

CTM 310M / Applied / JAN 26, 2024

STAR BANK 82U ROYAL FLESH 101Y
NOTTA 101Y BLACK CAP 151A
 NOTTA 50S JANETTE 5W

D.A.M. DOTS 94A ELECTRIC 31E
C SPECKLES KARLA 310K
 RIVER HILL 99Y BAVETTE 01B

BW	205D	FEB. 21, 2025 YW
95lbs	595lbs	1090lbs

The eye catcher in our pen, and with good reason! He's thick, deep bodied, and smooth.

LOT 18

COLOR

-

MYOSTATIN

-

POLLED

-



C SPECKLES MAGIC 606M

CTM 606M / CAN 20974-PB / JAN 5, 2024

RIVER HILL 12X A'MAN 94A
D.A.M. DOTS 94A ELECTRIC 31E
 NOTTA 68L LIGHTNING LADY 31X

MOOVIN ZPOTZ CAMARO 6X
MOOVIN ZPOTZ ANNIE 14A
 D.L.R. ELLE 36T

BW	205D	FEB. 21, 2025 YW
86lbs	639lbs	1085lbs

Here is a deep, soggy solid made bull. This half-brother to World Champion female Cora, and son of multiple time Grand Champion DAM Dots Electric 31E, will be a great addition to anyone's bull battery.

LOT 19

COLOR

EDED

MYOSTATIN

NON
CARRIER

POLLED

HP





BW 205D FEB. 21, 2025 YW
83LBS 601lbs 1100lbs

LOT 20

RED MCALEER MACHINE 10M

MDB 10M / CAA 2370641 / FEB 5, 2024

RED U-2 RIFF 1213C
RED YCLC GUTS N GLORY 175G
RED YCLC SUE 678X

RED DKF DISTINGUISHED 16D
RED MCALEER 10J
RED JENSEN FANCY 671D

	CE	BW	WW	YW	MCE	MILK
EPD	+1.0	+1.3	+44	+69	+3.0	+25

Here is a maternal brother to Lock N Load. His dam is a no miss cow with consistent genetics. Use him on heifers or produce top selling steers and keep all his daughters.



BW 205D FEB. 21, 2025 YW
97lbs 564lbs 1170lbs

LOT 21

RED MCALEER MONEYBALL 245M

MDB 245M / CAA 2364983 / JAN 28, 2024

RED U-2 MAMA'S BOY 167X
RED EYE HILL MAMA'S BOY 23J
RED SPITTALBURN MISSEY 314A

RED WILDMAN RIO GRANDE 520R
RED JENSEN TARANNA 245Z
RED JENSEN TARANNA 36M

	CE	BW	WW	YW	MCE	MILK
EPD	-6.0	+5.1	+43	+79	+3.0	+24

Moneyball is a power bull out of a 13 year old cow that just keeps producing. He'll add pounds and size into your calves.



BW 205D March 1, 2025 YW
85lbs 492lbs 950lbs

LOT 22

RED MCALEER MISTER 507M

MDB 507M / CAA 2370645 / FEB 11, 2024

RED U-2 MAMA'S BOY 167X
RED EYE HILL MAMA'S BOY 23J
RED SPITTALBURN MISSEY 314A

RED JENSEN KARGO 2A
RED JENSEN REBELLO 507M
RED JENSEN REBELLO 005X

	CE	BW	WW	YW	MCE	MILK
EPD	0.0	+1.7	+37	+72	0.0	+27

507M is a smooth made bull that has calving ease written all over him. The Mamas Boy sons have been extremely impressive.

McAleer Ranching - RED ANGUS

RED MCALEER MIGHTY 620M

MDB 620M / CAA 2364992 / FEB 2, 2024

LOT 23

RED U-2 RIFF 1213C
RED YCLC GUTS N GLORY 175G
 RED YCLC SUE 678X

RED BENCHMARK MOMENTUM 25'14
RED JENSEN GEORGINA 620D
 RED JENSEN GEORGINA 322A

	CE	BW	WW	YW	MCE	MILK
EPD	+5.0	-0.3	+46	+74	+6.0	+23

We showed Mighty this fall and got complimented on his perfect structure, and his impressive growth rate considering his light birthweight. He's a bull that'll work well in any situation.



BW	205D	FEB. 21, 2025 YW
74lbs	640lbs	1155lbs

RED MCALEER MACHO MAN 667M

MDB 667M / CAA 2364988 / FEB 1, 2024

LOT 24

RED U-2 MAMA'S BOY 167X
RED EYE HILL MAMA'S BOY 23J
 RED SPITTALBURN MISSEY 314A

RED JENSEN KARGO 38A
RED JENSEN TARANA 667D
 RED JENSEN TARANA 153Y

	CE	BW	WW	YW	MCE	MILK
EPD	+5.0	-0.2	+42	+72	+6.0	+25

Here's a solid made tank of a bull out of Mamas Boy. He is a calving ease bull with tons of power and performance.



BW	205D	FEB. 21, 2025 YW
71lbs	529lbs	1105lbs

RED MCALEER MIRACULOUS 671M

MDB 671M / CAA 2364997 / FEB 3, 2024

LOT 25

RED U-2 RIFF 1213C
RED YCLC GUTS N GLORY 175G
 RED YCLC SUE 678X

RED BAR-E-L LPH ZORRO 7Z
RED JENSEN FANCY 671D
 RED JENSEN FANCY 708T

	CE	BW	WW	YW	MCE	MILK
EPD	+0.0	+1.6	+39	+69	+3.0	+26

We use a full brother to Miraculous in our own herd. His Dam is one of our top producing cows, raising powerful herd bulls and females that produce.



BW	205D	FEB. 21, 2025 YW
82lbs	581lbs	1040lbs



BW	205D	FEB. 21, 2025 YW
76lbs	538lbs	1075lbs

LOT 26

RED MCALEER MOUNTAIN 715M

MDB 715M / CAA 2370647 / FEB 13, 2024

RED U-2 RIFF 1213C
 RED YCLC GUTS N GLORY 175G
 RED YCLC SUE 678X

RED WILDMAN DEMO 119Y
 RED JENSEN ANNIE 715E
 RED JENSEN ANNIE 952W

	CE	BW	WW	YW	MCE	MILK
EPD	+2.0	+0.8	+39	+62	+6.0	+22

Mountain is an eye catching bull with tons of middle and a great hip. This bull will work in any situation.



BW	205D	FEB. 21, 2025 YW
88lbs	591lbs	1140lbs

LOT 27

RED MCALEER MENTOR 741M

MDB 741M / CAA 2370659 / FEB 17, 2024

RED U-2 RIFF 1213C
 RED YCLC GUTS N GLORY 175G
 RED YCLC SUE 678X

RED BENCHMARK MOMENTUM 25'14
 RED JENSEN PRINCESS 741E
 RED T-K 152Y

	CE	BW	WW	YW	MCE	MILK
EPD	0.0	+1.9	+58	+95	+2.0	+28

This wide made soggy bull is a perfect option for adding depth and width into your calf crop. His dam always produces easy fleshing offspring.



BW	205D	FEB. 21, 2025 YW
75lbs	576lbs	1105lbs

LOT 28

RED MCALEER MASHER 768M

MDB 768M / CAA 2370654 / FEB 16, 2024

RED U-2 RIFF 1213C
 RED YCLC GUTS N GLORY 175G
 RED YCLC SUE 678X

RED WILBAR BACKDRAFT 331B
 RED JENSEN IRASTONE 768E
 RED JENSEN IRASTONE 526C

	CE	BW	WW	YW	MCE	MILK
EPD	+8.0	-1.8	+40	+66	+6.0	+27

Here's a bull that always catches my eye in the pen. He comes off a smaller cow who produces more calf per pound than anyone. He's a bull that can help make smaller more efficient cows who wean massive calves.

McAleer Ranching - RED ANGUS

RED MCALEER MIXER 769M

MDB 769M / CAA 2364986 / JAN 31, 2024

LOT 29

RED U-2 MAMA'S BOY 167X

RED EYE HILL MAMA'S BOY 23J

RED SPITTALBURN MISSEY 314A

RED T-K BASES LOADED 132B

RED JENSEN REBELLO 769E

RED JENSEN REBELLO 406B

	CE	BW	WW	YW	MCE	MILK
EPD	+2.0	+1.8	+38	+74	+5.0	+23

Mixer is built right to turn out into a large group of heifers. He'll get the job done and you'll have a stress free calving season.



BW	205D	FEB. 21, 2025 YW
79lbs	513lbs	1000lbs

RED MCALEER MUSTANG 770M

MDB 770M / CAA 2370666 / FEB 22, 2024

LOT 30

RED U-2 RIFF 1213C

RED YCLC GUTS N GLORY 175G

RED YCLC SUE 678X

RED JENSEN KARGO 38A

RED JENSEN FANCY 770E

RED JENSEN FANCY 912W

	CE	BW	WW	YW	MCE	MILK
EPD	-1.0	+1.5	+53	+85	+2.0	+26

This is a well balanced bull out of Guts N Glory. He moves freely and has the genetic make up to last for many years.



BW	205D	FEB. 21, 2025 YW
84lbs	558lbs	1030lbs

RED MCALEER MACHETE 934M

MDB 934M / CAA 2370644 / FEB 8, 2024

LOT 31

RED U-2 MAMA'S BOY 167X

RED EYE HILL MAMA'S BOY 23J

RED SPITTALBURN MISSEY 314A

RED JENSEN KARGO 38A

RED JENSEN TARANNA 934G

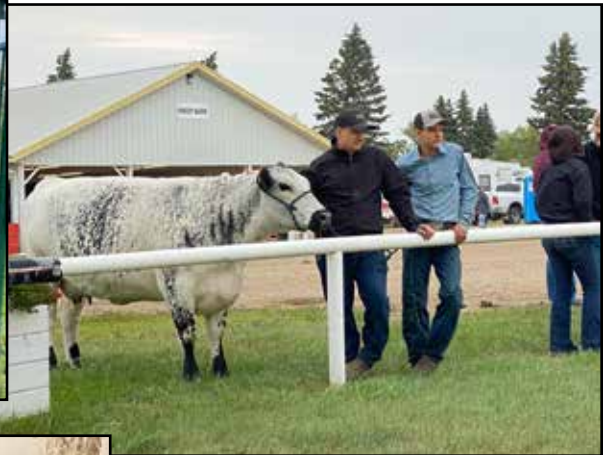
RED JENSEN TARANNA 245Z

	CE	BW	WW	YW	MCE	MILK
EPD	-3.0	+3.1	+44	+81	+1.0	+25

Machete is a dark hided powerhouse of a bull. His square top and solid base give him that herd bull look. He'll add pounds to your calf crop.



BW	205D	FEB. 21, 2025 YW
94lbs	588lbs	1210lbs



THANK YOU TO OUR 2024 BUYERS!

Fleetwood Speckle Park - Iona Station, ON
Watson Land and Livestock Inc - Branchton, ON
Ray Ortlieb x 3 - Millet, AB
Janzen Speckle Park - Wymark, SK
Samtia Speckle Park - Taber, AB
Ralph Davidson - Alliance, AB
Strawberry Creek Cattle - Mayerthorpe, AB
Pinto cow ranch - Rocky Mountain House, AB
Codiak Acres x 3 - Ardrossan, AB
Kindersley Creek Ranch - Diamond Valley, AB
Louis Watt - Paradise Valley, AB
River Hill Farm Ltd - Neilburg, SK
Keiwa Farms ltd - Marengo, SK
Crooked Creek Speckle Parks - Vermilion, AB
Peter Mosterd x 2 - Aberdeen, SK
Sarah McLean - Yellowhead County, AB
Valley Bottom Ranching - Charlie Lake, BC



**Return Undeliverable:
Wolf Lake Speckle Park
Box 7536
Bonnyville, AB
T9N 2H8**



**Preview Offering and Online Sale
Saturday
March 22, 2025**

WOLF LAKE SPECKLE PARK

**Dan & Heather Brundige
780-812-9250
Box 7536
Bonnyville, AB T9N 2H8
d_hbrundige@yahoo.ca
www.wolflakespecklepark.com**

MCALEER RANCHING

**C Speckles
Curtis & Terri McAleer
306-228-9402
Box 925 Unity, SK
S0K 4L0
ctmcaleer@sasktel.net**

**D.A.M. DOTS Ranch
Dustin & Brittany McAleer
306-228-1498
Box 2038 Unity, SK
S0K 4L0
mcaleerd@hotmail.com**