

Gilchrist Genetics

THE
GENTLEMEN'S
BULL SALE

ONLINE
FEBRUARY 15 & 16, 2025



RYAN & SARA GILCHRIST
Bluffton, Alberta

Welcome to the second edition of the Gentlemen's Bull Sale! We are excited for the continuation of this event!

We would like to take a moment to thank everyone who has invested in our program over the years, whether it be buying bulls in February or buying heifers in our October sale, we truly appreciate all of you!

What a great year 2024 has been! With record market prices in all aspects; feeder, breeding & slaughter cattle. The Agriculture industry is looking bright!

Our program consists of red and black purebred simmentals and a commercial herd of primarily Simmental/Angus base. We artificially inseminate all our cows both purebred and commercial on their first cycle to add genetic diversity to our herd. We believe strongly in having the momma cow do the work, so our calves do not see a creep feeder until the quiet weans go in. Quiet weans are used for a less stressful weaning process. They get access to a creep pellet for one week while nose paddles are in to help them with the transition of being with momma but not having milk anymore. We do this for the continual development of our cow herd, to help prove out and select for cows that do the best possible job of raising a calf.

In our black and black blaze division you will find bulls sired by Mader Walk this Way, RF No limits, Mr CCF Vision, Sunrise Captain Blaze and our walking herdsire SKV Give Em Hell. In our red and red blaze division you will find bulls sired by Mader Walk the Line, WS Beef Maker, Sunrise Captain Blaze & SKV Give Em Hell.

All bulls are frame scored, as well as polled and coat colour tested; results are included under each bull. We have provided additional pages to explain the polled, coat color and frame score data.

The bulls were weaned September 1st with the exception of 9M, 20M, & 50M they were weaned July 30th as we planned on showing them in the fall. We used quiet weans again for a less stressful transition. Yearling weight were taken January 1st, 2025. *Please note that the weaning weights and yearling weights posted under each bull are actual weights, not adjusted.*

The bulls are developed on a cereal silage based TMR ration balanced with the Masterfeeds Blueprint bull supplement. The main focus is the health and development of the bulls over their rate of gain.

All sale bulls will be videoed prior to the sale, the link can be found on our Facebook page, Bohrson Marketing website or in the DLMS Farmgate listing.

We look forward to visiting with each and every one of you at the open house! Feel free to call or text us with any questions you may have on the offering or the online bidding process.

-Ryan Et Sara

Ryan: 403•704•3548 • Sara: 780•305•6855 • gilchristgenetics@outlook.com

Open House and Viewing

Before Sale Day - Sale bulls will be available for viewing anytime prior to sale day. We encourage customers to come to the farm ahead of sale day so we can give you a more personalized tour through the sale cattle. If you would like to see the sale bulls prior to sale day weekend, please contact use to schedule a viewing.

Open House/Sale Day - Since this is an online only event, there will not be an in-person sale held on-farm, however there will be an open house February 15 & 16 from 10am-4pm. Please contact us if you wish to come outside of open house hours.

Online - If you are unable to view the bulls in-person, you can view the bull videos online instead.

Videos - will be posted on our facebook page @GilchristGenetics or on the FarmGate Timed Auctions listing page.

Sale Day Phones

Ryan Gilchrist 403-704-3548
Sara Gilchrist 780-305-6855

Bohrson Marketing Services
Scott Bohrson 403-370-3010
Darryl Snider 780-385-5561

Canadian Farm Insurance
Kolton Kasur 403-387-8376

Online Sale

DLMS
Mark Shologan 780-699-5082

See full instructions on page 15.

Access our sale page at

<https://www.farmgatetimeductions.ca/auction/27701>



Sale Information

PHOTOS & VIDEOS

Photos taken by Gilchrist Genetics December 29th.
Videos taken by Gilchrist Genetics end of January.

SIGHT UNSEEN PURCHASING

Every year more and more bulls are purchased sight unseen because of the increasing number of repeat buyers and access to videos. If you can't make it to the Open House, give us a call. We know our cattle and are confident that we can recommend bulls that meet your specifications. Then you, the buyer, can get your business done in a very confidential and professional manner. You can also reach out to Scott Bohrson or Darryl Snider of Bohrson Marketing to help you with purchasing a bull.

DELIVERY

Option A: Pick your bull up February 16th and receive \$100 per head off your purchase price

Option B: Free delivery to central points within 300kms of Gilchrist Genetics. If you are unable to receive your bull when we are delivering to your area, the bull must be picked up from Gilchrist Genetics at buyers expense.

Option C: Bulls may be left on the farm free of charge until April 1. A rate of \$5 per head per day will apply after April 1 and bull will then need to be picked up by the buyer at the buyers expense no later than May 1. All bulls staying on farm must be insured.

INSURANCE

Any animal remaining at Gilchrist Genetics after February 16, 2025 must be insured.

HEALTH

All sale animals are fully vaccinated. At birth bulls received Inforce 3 and Calf Guard. At pasture turn out and weaning bulls received Bovishield Gold One Shot, Fermicon 7/Ultrabac 8, and Ivomectin.

FERTILITY TESTING

All bulls have been under a full herd health program, under the guidance of Bluffton Veterinary Services. All bulls will be fertility tested prior to the sale. Should you have any questions please give us a call.

BREEDERS GUARANTEE

Standard terms set forth by the Canadian Simmental Association, with the exception where any animal is subject to any hormonal or surgical reproduction techniques after the sale, the guarantee shall be null and void.

SEMEN RESERVE

Gilchrist Genetics reserve the right to collect 100 straws of semen for in herd use only on any bull in our sale. Semen would be collected at the seller's expense and buyer's convenience

TERMS

Every animal sells to the highest bidder, as determined by FarmGate Auctions. Animal purchased becomes responsibility of buyer at the end of the sale. We highly recommend that you purchase insurance. While we will always provide the utmost care of your animal, we are not responsible for any illness, injuries or mortality after the animal is declared sold.

PAYMENT

Payments shall be made by e-transfer or cheque payable to Ryan Gilchrist in Canadian Funds at par immediately following the sale. The right of ownership shall not pass until after settlement is made. All settlements must be made before any livestock will be released.

CERTIFICATE OF REGISTRY

After settlement has been made the buyer will be provided with the proper registration papers, duly transferred on the record of the Canadian Simmental Association. Further transfer to the herd books of other countries shall be at the buyers expense.

ACCIDENTS

Although every precaution will be taken to protect the safety and comfort of buyers/bidders/viewers, neither Gilchrist Genetics, Bohrson Marketing or FarmGate Auctions assumes any responsibility in the matter and disclaims any liability, legal or otherwise in the event of accident or loss or property.



Frame Score

Frame score is a convenient way of describing the skeletal size of cattle. The Beef Improvement Federation Guidelines (1996) define frame score as follows:

Frame score is a score based on subjective evaluation of height or actual measurement of hip height. This score is related to harvest weights at which cattle should attain a given quality grade or attain a given amount of fat thickness.

Frame score of an animal is determined by mathematical equations that use age and height as variables. No one frame size for an animal will be best for all feed resources, breeding systems, and feed costs. Reproductive efficiency and projected market weight will determine the optimum frame size range within a given set of feed resources, breeding systems, and production costs.

With adequate height growth curves, most animals should maintain the same frame score throughout their life while their actual height increases with age. Frame size can be influenced by nutritional management. Frame score is easily determined if age and height in inches are available see Table 1. Estimates of cattle heights and corresponding frame scores are given for bulls (5 to 21 months). Bull height estimates may be used to approximate steer frame values.

Table 1. Bull Hip Height (Inches) Frame Score for Ages 5 to 21 Months.

Age in Months	Frame Score								
	1	2	3	4	5	6	7	8	9
5	33.5	35.5	37.5	39.5	41.6	43.6	45.6	47.7	49.7
6	34.8	36.8	38.8	40.8	42.9	44.9	46.9	48.9	51.0
7	36.0	38.0	40.0	42.1	44.1	46.1	48.1	50.1	52.2
8	37.2	39.2	41.2	43.2	45.2	47.2	49.3	51.3	53.3
9	38.2	40.2	42.3	44.3	46.3	48.3	50.3	52.3	54.3
10	39.2	41.2	43.3	45.3	47.3	49.3	51.3	53.3	55.3
11	40.2	42.2	44.2	46.2	48.2	50.2	52.2	54.2	56.2
12	41.0	43.0	45.0	47.0	49.0	51.0	53.0	55.0	57.0
13	41.8	43.8	45.8	47.8	49.8	51.8	53.8	55.8	57.7
14	42.5	44.5	46.5	48.5	50.4	52.4	54.4	56.4	58.4
15	43.1	45.1	47.1	49.1	51.1	53.0	55.0	57.0	59.0
16	43.6	45.6	47.6	49.6	51.6	53.6	55.6	57.5	59.5
17	44.1	46.1	48.1	50.1	52.0	54.0	56.0	58.0	60.0
18	44.5	46.5	48.5	50.5	52.4	54.4	56.4	58.4	60.3
19	44.9	46.8	48.8	50.8	52.7	54.7	56.7	58.7	60.6
20	45.1	47.1	49.1	51.0	53.0	55.0	56.9	58.9	60.9
21	45.3	47.3	49.2	51.2	53.2	55.1	57.1	59.1	61.0

Frame Score = $-11.548 + 0.4878(Ht) - 0.0289(\text{Days of Age}) + 0.00001947(\text{Days of Age})^2 + 0.0000334(Ht)(\text{Days of Age})$ Equation should only be used for bulls between the ages of 5 and 21 months.

The recommended point for linear measurement of hip height is over the hooks and hip bones (Figure 1). Hip heights should not be used as a replacement for other performance data.

Although no one frame size is best for all producers, hip heights or frame scores do provide supplemental information for the breeder and the buyer.

Hip heights should be measured in inches directly over the hooks (hip bones) with the animal standing on a level surface. To make accurate comparisons, age should be considered when measuring hip height.

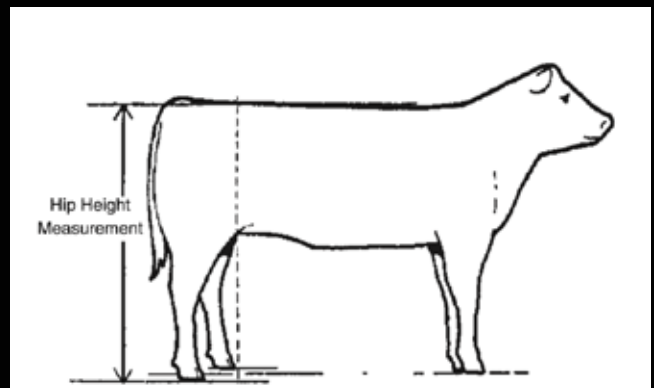


Figure 1. Height Measurement.

The hip height measurement should be taken at a point directly over the hip bones (hocks) with the animal standing on a level surface.

Homo Polled Et Coat Colour

All bulls have homo polled and coat colour results specified in this catalogue or will be posted by sale day.

DNA testing was performed to obtain their results.

"Homo" is short for Homozygous ex. Homozygous Polled

"Hetero" is short for Heterozygous ex. Heterozygous Polled

A red animal born out of two black parents will be dilutor free

RED CATTLE

A Diluter Carrier carries one dilution gene and one non-dilution gene. Diluter Carriers can pass either gene onto their progeny, therefore some calves may express a diluted coat colour while other calves have a normal coat colour.

If they do pass a dilution gene onto their progeny, a black calf will be diluted to grey and a dark red calf will be diluted to light red.

If they pass on a non-dilution gene onto their progeny, a black calf will be black and a dark red calf will be red.

BLACK CATTLE

Homo Black refers to the animal carrying two copies on the black gene.

Hetero Black means the animal is black in colour, but carries one black gene and one red gene. Black is dominant to red, so the red colour is not expressed when paired with a black gene.

What this means:

BULL	COW	RESULTING CALVES
<i>HOMO POLLED - this bull carries two copies of the polled gene</i>		
Homo Polled	Homo Polled	100% Polled
	Hetero Polled	100% Polled
	Horned	100% Polled
<i>HETERO POLLED - the bull is polled, but carries one polled gene and one horned gene</i>		
Hetero Polled	Homo Polled	100% Polled
	Hetero Polled	75% Polled, 25% Horned
	Horned	50% Polled, 50% Horned
<i>HOMO BLACK - the bull carries two copies of the black gene</i>		
Homo Black	Homo Black	100% Black
	Hetero Black	100% Black
	Red	100% Black
<i>HETERO BLACK - the bull is black in color, but carries one black gene and one red gene. Black is dominant to red, so the red color is not expressed when it is paired with a black gene.</i>		
Hetero Black	Homo Black	100% Black
	Hetero Black	75% Black, 25% Red
	Red	50% Black, 50% Red
<i>RED - the bull carries two copies of the red gene. *This example assumes the bull is diluter free.</i>		
Red	Homo Black	100% Black
	Hetero Black	50% Black, 50% Red
	Red	100% Red



RSG 9M • 1476083 • 4Jan24

Frame Score: 5.2

Homo Polled

Homo Black

BW 91 WW 760 YW 1305

CE	BW	WW	YW	MILK	MCE	MWWT
9.9	2.2	89.4	136.1	23.1	7.9	67.8



Sunrise Captain Blaze 5C: Sire of 9, 13, 15, 18, & 63

GG MEMPHIS 9M

SVS CAPTAIN MORGAN 11Z
S: **SUNRISE CAPTAIN BLAZE 5C**
SUN RISE BLACK 45R

TLSS AVENGER 124Z
D: **SKV CIMMARON 33C**
MADER P IRON MAIDEN 15X

HARVIE JDF WALLBANGER111X
SUNNYVALLEY BLK JENNA 88U
RCC/TCF LINE DRIVE M181
SUN RISE 35G
TLSS/TLG GRAN TORINO 904W
TLSS HUSSEY'S PRINCESS10X
MADER P BLACK IRONMAN 22U
LFE FAMOUS 632T

Talk about ALL BULL! Memphis is the first of 2 embryo brothers, the other being 15M. We think the Sunrise Captain Blaze x SKV Cimmaron combination was a home run! We got 4 calves from this implant, 2 bulls and 2 females and all 4 are going to be impactful to our herd and yours in the years to come! We will talk about the donor cow more in 15M's footnote. Memphis is big hipped and heavy muscled with that herd bull look. We think his photo speaks for itself, Memphis is impressive from every angle! We have talked about keeping Memphis for ourselves several times but have come to the conclusion that because we AI so much that we would offer him to the industry! That being said we are retaining the right to draw semen on him for in-herd use. Don't miss out on adding Memphis to your herd!
Note: weaning weight was July 30th as we had planned to show him.



SKV 13M • 1475754 • 6JAN24

Frame Score: 5.0

Homo Polled

Homo Black

BW 79 WW 860 YW 1260

CE	BW	WW	YW	MILK	MCE	MWWT
15.4	1.0	85.7	129.6	26.8	11.3	69.7



GG Gold Jewel 45J: Dam

GG GOLDEN MILLER 13M

SVS CAPTAIN MORGAN 11Z
S: **SUNRISE CAPTAIN BLAZE 5C**
SUN RISE BLACK 45R

OLF ODIN U5
D: **GG GOLD JEWEL 45J**
SKV GIRL IN GOLD 18G

HARVIE JDF WALLBANGER111X
SUNNYVALLEY BLK JENNA 88U
RCC/TCF LINE DRIVE M181
SUN RISE 35G
ELLINGSON LEGACY M229
OLF LADY TRIATHLON S655
W/C WIDE TRACK 694Y
LNS DESTINY'S GOLD 227A

Miller, as we call him, is a wide based and well balanced bull out of an Odin daughter who has a great track record here at GG. Her first calf sold in last year's sale to William Millar. 13M's grandmother SKV Girl In Gold 18G was a beautiful cow that we wish we had a whole herd of! Miller is a lower birthweight option. He is a moderate framed, stout made bull that is solid from the ground up.



RSG 15M • 1476085 • 6JAN24

Frame Score: 6.0

Homo Polled
Homo Black

BW	100	WW	924	YW	1310	
CE	BW	WW	YW	MILK	MCE	MWWT
9.7	3.6	87.8	132.5	23.1	8	67



SKV Cimmaron 33C: Dam of 9 & 15

GG MANHATTAN 15M

SVS CAPTAIN MORGAN 11Z
S: SUNRISE CAPTAIN BLAZE 5C
SUN RISE BLACK 45R

TLSS AVENGER 124Z
D: SKV CIMMARON 33C
MADER P IRON MAIDEN 15X

HARVIE JDF WALLBANGER111X
SUNNYVALLEY BLK JENNA 88U
RCC/TCF LINE DRIVE M181
SUN RISE 35G
TLSS/TLG GRAN TORINO 904W
TLSS HUSSEY'S PRINCESS10X
MADER P BLACK IRONMAN 22U
LFE FAMOUS 632T

Manhattan is the ET brother to 9M. The Donor cow of these two gentlemen is SKV Cimmaron 33C, who we call Ronnie, she has been a favourite since the day she was born. 33C's mother is a full sister to Mader Iron Sugar 7X. Iron Sugar needs no introduction to the industry; she makes them great whether they are a bull or female, and we think Ronnie is doing just the same! Manhattan is a bull we like quite a bit! He is a smooth made bull the exhibits a long spine, round quarter and structural correctness. As an added bonus he carries a splash of white on his face!



RSG 18M • 1476087 • 7JAN24

Frame Score: 6.4

Homo Polled
Homo Black

BW	99	WW	958	YW	1430	
CE	BW	WW	YW	MILK	MCE	MWWT
9.5	3.2	91.9	138.5	23.6	7.4	69.6



Skors Black Mickey 246Z: Dam

Inset: GG Blazin' Mickey 22M: Full Sister

GG MOMENTUM 18M

SVS CAPTAIN MORGAN 11Z
S: SUNRISE CAPTAIN BLAZE 5C
SUN RISE BLACK 45R

MR NLC SUPERIOR S6018
D: SKORS BLACK MICKEY 246Z
SKORS BLACK MICKEY 136W

HARVIE JDF WALLBANGER111X
SUNNYVALLEY BLK JENNA 88U
RCC/TCF LINE DRIVE M181
SUN RISE 35G
ELLINGSON LEGACY M229
EBS JOKERS CAREN
SHS ENTICER P1B
SKORS BLACK MICKEY 222R

Momentum is a big bodied, long spined bull with loads of performance, an all around good bull. His mother is a big bodied, broody made, black NLC Superior daughter we acquired from Skor Simmentals Dispersal in 2019. 246Z was our first pick of the Skor catalog and we were even more excited when we saw her in person! When we flushed 246Z to Captain Blaze we were hoping for white faces and females because we love her and wanted to add more of her to our herd! It's not often you get the gender of calf that you want but this flush was a success, resulting in 18M and 5 females. We sold two of the full sisters in our annual female sale this past October and retained 3 for our herd. One went to Perkins Land & Cattle and the other went to Lonestone Farms; we are excited for their future within those progressive operations! So whether you're looking to make heavy steers or productive females, Momentum should be high on your list!



20

RSG 20M • 1476077 • 7JAN24

Frame Score: 6.8

Polled/Scurred

Non- Dilutor

BW 105 WW 870 YW 1460

CE	BW	WW	YW	MILK	MCE	MWWT
7.0	4.6	101.7	147.8	25.7	5.1	76.6



Mader Walk The Line 92J: Sire



52C Udder

GG FULL MONTY 20M

MADER WALK THIS WAY 224B
S: MADER WALK THE LINE 92J
 IRCC DARLIN' 613D

TLSS AVENGER 124Z
D: LNS CALLISTO 52C
 LNS MISS YEARBOOK

NCB COBRA 47Y
 MADER P IRON SUGAR 7X
 MR HOC BROKER
 DESTINY ODIN SHEA
 TLSS/TLG GRAN TORINO 904W
 TLSS HUSSEY'S PRINCESS10X
 CROSSROAD SARGENT 143S
 4L MS ADVANTAGE 79N

You read that pedigree correctly, we've added the highly sought after Mader Walk the Line to our ai sire lineup! The \$280,000 phenomenon is doing great things in many programs across the breed, Full Monty is no exception! Monty, as we call him, has been a fun one to watch develop over the summer and we knew he needed to headline our show string in the fall of 2024. From the start of halter breaking to now, I don't think we have ever had a bull that liked to be scratched as much as he does!! Monty is an extremely long bodied high performance bull with a big square hip and lots of Lower quarter. He is a large frame bull that knows how to push down the scale! The udder quality on both sides of his pedigree, the Darlin' and Callisto cow families, are top notch! Don't miss out on adding this universal breeding piece to your herd. *Note: weaning weight was July 30th as we had planned to show him.*



33

RSG 33M • 1476090 • 10JAN24

Frame Score: 5.6

Homo Polleld

Homo Black

BW 96 WW 744 YW 1185

CE	BW	WW	YW	MILK	MCE	MWWT
11.8	1.7	81	121	25.1	6.4	65.6



Hart State of War 056C: Sire

GG STATE OF MIND 33M

WELSH'S WARSAW 312Z
S: HART STATE OF WAR 056C
 HART MISS 102A

SKV ENTOURAGE 26E
D: GG DESTINY KELLY 105K
 SUNNY VALLEY DESTINY 55C

FBFS WARSAW 068W
 WELSHS ROSIE 102W
 SKORS BLACK ENTICER 287Y
 HART MISS X534
 SS GOLD MINE L42
 SKV CIMMARON 33C
 SVS CAPTAIN MORGAN 11Z
 SNIDER'S BLACK DESTINY

It's a rarity for us to only have one Hart State of War son on offer. With his semen being harder to find, we have been using him quite selectively. The foot quality on all the State of War progeny we have had are exceptional; big-footed, closed-toe with lots of heel. The State of War females we have are nice uddered and great producers. State of Mind is a level topped, deep chested bull that is sure to make some promising females.

34



SKV 34M • 1475765 • 10JAN24

Frame Score: 5.8

Homo Polled
Non-Dilutor

BW	91	WW	884	YW	1340	
CE	BW	WW	YW	MILK	MCE	MWWT
9.8	2	82.1	121.5	23.1	4.	64.2



GG Jorja 30J: Dam

GG MERCURY RISING 34M

S: **WS BEEF MAKER R13**
HOOKS SHEAR FORCE 38K
DCR MS RIBEYE N7Z

D: **GG JORJA 30J**
HARVIE RED SUMMIT 54B
LNS GEORGIA RULE 9Z

NICHOLS LEGACY G151
C&D TRACY
R PLUS RED RIBEYE 1134L
DCR MISS ZINGER
KWA FLYF RED MOUNTAIN 16Z
HARVIE DAKOTA ROSE 11Z
TWIN-CHIEF WESTON 115W
VIRGINIA MS MAGGIE 51X

We are making old new again, it's been several years since we have used WS Beef Maker R13. You can never go wrong with using the older proven bulls and Mercury is no exception! Mercury is a bull that we are quite high on and have talked about all summer! He possesses that desirable dark red hair coat. Mercury is a dense made bull that carries his muscle well down his quarter and has excellent rib shape. Mercury is backed by a Harvie Red Summit daughter who has been consistent in production.

35



SKV 35M • 1475767 • 10JAN24

Frame Score: 6.4

Homo Polled
Hetero Black

BW	102	WW	882	YW	1260	
CE	BW	WW	YW	MILK	MCE	MWWT
9.9	0.7	81	120.5	24.1	8	64.6



Mader Walk This Way 224B: Sire

GG MAKIN' WAVES 35M

S: **MADER WALK THIS WAY 224B**
NCB COBRA 47Y
MADER P IRON SUGAR 7X

D: **SKV DELICIOUS IN BLACK 5D**
SAND RANCH HAND
LNS BLACK WIDOW 466B

LFE VIPER 455U
NCB MISS DREAM 22T
MADER P BLACK IRONMAN 22U
LFE FAMOUS 632T
WHEATLAND BULL 131L
SAND LUCKY CHARMER
CMS SEIMENKO 119Y
D BAR C BLACK MUMBO 137X

Here's a bull that stems back to one of our foundation cows, D Bar C Mumbo 137X, who is still on the farm raising babies and making embryos. Makin' waves is a growthy son of Mader Walk This Way. He's deep sided and well balanced front to back. Makin' Waves exhibits good dimension with a nice wide top and open rib shape. In addition, 35M has a well laid shoulder and nice skull shape. Longevity is built into this pedigree, don't miss out on the opportunity to add a part of the Mumbo cow family to your herd.

45



RF No Limits 1112J: Sire

GG NO MERCY 45M

R PLUS YUMA 9087G
S: RF NO LIMITS 1112J
 RUST MISS 6217D
 WLE UNO MAS X549
D: SKV GOOD LOVIN' 2G
 SKV ELECTRIC LOVE 40E

R PLUS 5015C
 MISS R PLUS 3007A
 WS STEPPING STONE B44
 TNT MISS W31
 CNS DREAM ON L186
 SHAWNEE MISS 770P
 SS/PRS HIGH VOLTAGE 244X
 D BAR C BLACK MUMBO 137X

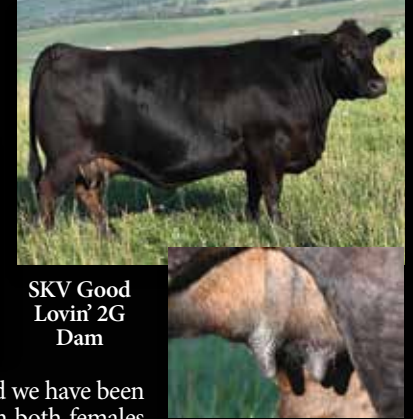
This is the first time we used RF No Limits, and we have been impressed with progeny that have sold off him both females and bulls alike! Needless to say we like what we see and have more females penciled to be aied to him for the 2026 breeding season! No Mercy is an attractive made bull that checks a lot of boxes. He's stout hipped and has ample spring of rib. We sold his maternal brother to the Poffenroth family last year. No Mercy's dam is a beautiful Uno Mas daughter who is big bodied moderate framed cow with an impeccable udder. To say we love his dam, 2G, would be an understatement! We love her so much that she's entering our donor program this spring!

SKV 45M • 1475769 • 12JAN24

Frame Score: 5.3

Homo Polled
 Hetero Black

BW	92	WW	846	YW	1250	
CE	BW	WW	YW	MILK	MCE	MWWT
9.1	2.2	90.2	129.8	21.2	3.4	66.3



SKV Good Lovin' 2G
 Dam

50



SKV 50M • 1475773 • 16JAN24

Frame Score: 5.7

Homo Polled
 Homo Black

BW	98	WW	788	YW	1420	
CE	BW	WW	YW	MILK	MCE	MWWT
9.1	3.4	85.1	125.9	23.7	3.4	66.3



Mr CCF Vision: Sire

GG MANIFESTATION 50M

MR NLC UPGRADE U8676
S: MR CCF VISION
 GCF MISS ELSA
 RF/RUST STIMULUS 610D
D: GG MS HEARTBEAT 4J
 BLACKSAND HEARTBEAT 75B

ELLINGSON LEGACY M229
 MS NLC MOJO S6119 B
 CNS DREAM ON L186
 SS MISS BREAK
 TNGL GRAND FORTUNE Z467
 RF NOT JUST A FLIRT 404B
 SPRINGCREEK LOTTO 52Y
 BLACKSAND KO GIRL 968W

Maternal! Manifestation aka Mani, is a smooth made, well balanced bull. He is wide topped with good rib shape. On top of his phenotype appeal, he is one of the highest gaining bulls in the pen this year. We can't say enough good things about the females on the bottom side of this guys pedigree! His dam is powerful, long bodied feminine cow that will be entering the donor pen soon. A maternal brother sold to Jace Poffenroth in last years sale. If you're looking for a quiet, maternal bull, Mani should be at the top of your list! *Note: weaning weight was July 30th as we had planned to show him.*



57

SKV 57M • 1475775 • 16JAN24

Frame Score: 5.2

Homo Polled
Hetero Black

BW	102	WW	822	YW	1200	
CE	BW	WW	YW	MILK	MCE	MWWT
9	3.9	66.2	92.8	22.6	2.4	55.7



LFE Stratton 3094F: Sire

GG MIDNIGHT BOURBON 57M

LFE TRIUMPH 816A
S: LFE STRATTON 3094F
LFE RS AMBER 2140B
SS GOLD MINE L42
D: LNS DESTINY'S GOLD 227A
GGRR IR BLK DESTINY 39X

LFE BEER MONEY 811Y
LFE BISS BS SUNSHINE 609X
LFE SPRINGSTEEN 449Y
LFE RS AMBER 41W
WLE POWER STROKE
GW MISS LUCKY BUCK 858G
M&S MR SHOTGUN 21U
SNIDER'S MISS 30 BELOW

Black Stratton! This is our first time using LFE Stratton in our herd and we are not disappointed. Stratton added depth of body to his progeny. Bourbon is an all around solid made bull in a blaze faced package! He displays good muscle shape, is a loose hided and smooth striding bull. Bourbon has longevity in his pedigree being backed by a 12 year old cow who is still going strong. This guy will add stoutness and style to your next calf crop!



63

RSG 63M • 1476093 • 22JAN24

Frame Score: 5.7

Homo Polled
Non-Dilutor

BW	93	WW	726	YW	1135	
CE	BW	WW	YW	MILK	MCE	MWWT
12.8	2.4	84.1	128.8	29.9	11.8	71.9



SKORS Black Sable 46E: Dam

GG RED MAFIA 63M

SVS CAPTAIN MORGAN 11Z
S: SUNRISE CAPTAIN BLAZE 5C
SUN RISE BLACK 45R
SKORS BLACK ENTICER 219C
D: SKORS BLACK SABLE 46E
SKORS BLACK SABLE 283A

HARVIE JDF WALLBANGER111X
SUNNYVALLEY BLK JENNA 88U
RCC/TCF LINE DRIVE M181
SUN RISE 35G
SKORS BLACK ENTICER 4W
SKORS MS BROOKS 25Z
LFE BS LEWIS 322U
MISS NOREMAC LCL 109K

Mafia is a stout square hipped bull with loads of shape. He's sound and free moving with a good heavy hair coat. We really like the Captain Blaze progeny for their consistency of muscle shape, growth, docility and foot structure. Captain Blaze's dam 45R is what some would call an ideal female with a picture perfect udder! Being backed by incredible cow families and a proven sire, what's not to love about this red blaze faced bull!



68

SKV 68M • 1476072 • 26JAN24

Frame Score: 5.6

Homo Polled
Hetero Black

BW 106 WW 806 YW 1150

CE	BW	WW	YW	MILK	MCE	MWWT
8.2	3.8	75.2	108.8	18.7	3.8	56.3



Elle 638D: Full Sister to Sire

GG MAD MAX 68M

NCB COBRA 47Y
S: **SKV GIVE EM HELL 70G**
CAJS ELEGANT FORCE W24
MRL SUMMIT 65Z
D: **SVS BLK HONEY 439B**
REMINGTON HONEY 213U

LFE VIPER 455U
NCB MISS DREAM 22T
SVF STEEL FORCE S701
JM DICE-H25-L24
WHEATLAND PREDATOR 922W
MRL MISS 380T
REMINGTON ON TARGET 2S
HPF MS HONEY R007

We were excited when this guy popped out of momma with the most perfect of a blaze! We purchased his dam from Sunny Valley Simmentals at Friday Night Lights as a bred heifer. Sara had been wanting a daughter out of the of HPF Honey 007 cow for a very long time! This will be the last opportunity to purchase a 'Honey' progeny from GG, as Honey 439B came up open this fall. Honey 439B only gave us bull calves in her time at GG, so we unfortunately don't have any daughters in the herd. The mating with our walking herdsire, SKV Give Em Hell 70G, sure clicked well! Mad Max is an attractive patterned deep bodied bull. He is free striding, has great flex to his pastern and hits his pockets every time.



79

RSG 79M • 1476097 • 6FEB24

Frame Score: 5.6

Polled/Scurred
Hetero Black

BW 101 WW 780 YW 1200

CE	BW	WW	YW	MILK	MCE	MWWT
9.6	3.6	85.4	125.7	20.4	6.5	63.1



NCB Cobra 47Y: Paternal Grandsire

GG MASERATI 79M

NCB COBRA 47Y
S: **SKV GIVE EM HELL 70G**
CAJS ELEGANT FORCE W24
MR NLC UPGRADE U8676
D: **TSF CAMERO 25C**
TSF ULYSSA 84U

LFE VIPER 455U
NCB MISS DREAM 22T
SVF STEEL FORCE S701
JM DICE-H25-L24
ELLINGSON LEGACY M229
MS NLC MOJO S6119 B
TNT TOP CUT P274
MISS ARNOLD K2135

Like his name suggests, Maserati is sleek in his lines, long bodied with ample muscling. His dam, Camero 25C, unfortunately came up open this fall so this the last opportunity to obtain part of her pedigree. 25C was a moderate female with a nice square udder. Look to Maserati to add length and overall size to your next calf crop!

94



SKV 94M • 1476076 • 21FEB24

Frame Score: 6.5

Polled

Non-Dilutor

BW	106	WW	796	YW	1185
CE	10.7	BW	2.4	WW	75
		YW	107.7	MILK	25.2
		MCE	7.2	MWWT	62.7



SKV Hot Wired 7D: Dam

GG MOONSHINE 94M

NCB COBRA 47Y
S: SKV GIVE EM HELL 70G
 CAJS ELEGANT FORCE W24

WHEATLAND CIRCUIT BREAKER
D: SKV HOT WIRED 7D
 KOP MS ULTIMATE 212Y

LFE VIPER 455U
 NCB MISS DREAM 22T
 SVF STEEL FORCE S701
 JM DICE-H25-L24
 WHEATLAND HIGHVOLTAGE122Y
 WHEATLAND LADY 81X
 IPU ULTIMATE 3U
 KOP BENGIE 70P

Moonshine is our youngest bull on offer but don't let that fool you, he has kept up with the older boys! Moonshine is a long bodied, phenotypically correct bull. He profiles very well with good muscle expression. Maternal brother's to Moonshine reside at Triple MP Farms and at Luc Trenson's. Moonshine's dam is a beautiful uddered, attractive patterned daughter of Wheatland Circuit Breaker. We used Circuit Breaker for the udder quality on his female progeny as they are second to none and he did not disappoint.



Map to the Gilchrist Farm



Gilchrist Gentlemen's Online Sale

Access our sale page at

<https://www.farmgatetimeductions.ca/auction/27701>

For more info and assistance with bidding contact any of the sale contacts listed on the DLMS Website.

DLMS FarmGate Timed Auctions ~ Mark Shologan Ph: 780-699-5082



How to Participate in the DLMS Farm Gate Timed Auction with Extended Bidding

1. Visit dlms.ca and follow the link to the DLMS FarmGate timed auction site www.farmgatetimeductions.ca, click the LOGIN/REGISTRATION button. First time users will select the REGISTER button from this page. Fill out the registration form to sign up for a free user account and it allows you to select a username and password for use on all Farm Gate Timed auctions. This program will send you text and email messages whenever there is activity on your favorite lots or someone challenges your proxy bid and this is why you will be asked for both your current email and cell phone number. If you are a past participant in the Farm Gate Timed auctions simply enter your user name and password to continue. This takes you to a list of both current and upcoming Farm Gate Auctions.
2. You can choose your favourite lots in this sale at this time and the program will allow you to open either all sale lots or just your favorite lots on your screen. Any time there is active bidding on a lot you have identified on your favorite list you will get a text and/or an email noting this activity.
3. The program allows you to place a proxy bid on any sale lot. This in fact protects your interest in any lot of interest for you to a specified dollar value you set, when you may not be able to give 100% attention to the sale. If the lot has a \$2000 bid on it and you place a proxy bid of \$3500 into the system, the computer will bid \$2100 for you but if some one else bids \$2200, the computer will again bid for you, this time at \$2300. The system will look after your interest to a maximum of \$3500. If another bidder is on at \$3600, your proxy will no longer be effective and you will no longer have the winning bid on this lot without once again logging in and bidding again or moving your attention to a second lot of interest.
4. At closing time of the sale the entire sale will extend bidding if a bid is placed on any lot in the sale. Any bid received after close time will extend the sale by the time listed on each sale. In Most cases the time gets shorter the longer in to extended bidding the sale is. When no bidding occurs for the extended time the computer will declare the sale finished.
5. Following the sale the Owner or Sale Manager will invoice all buyers in the sale, please contact the seller with questions or to arrange delivery, pick up or shipping of your purchases.

FAQ:

WHAT IS RACEHORSE STYLE SALE CLOSE? Racehorse style sale close is when the entire sale stays open in extended bidding. This type of sale allows you as the bidder to change to a different lot within the same sale if the bidding has gone in to extended bidding.

HOW WILL EXTENDED BIDDING WORK? When we get to the close out end time the clock for close extends with any bid placed with less than 5 min on the clock. This type of extended bidding turns the end time to more of a soft time. Extended bidding allows bidders to compete in lots like a real auction and give all bidders the same time to make a decision. Always follow the clock to see how much time remains in the sale you are interested in.

Mark Your Calendars!



Gilchrist Genetics

GENETIC
GEMS '24
Simmental Female Sale

OCTOBER 19 & 20, 2025

With Guest Consignors



Gilchrist Genetics

RYAN & SARA GILCHRIST

BLUFFTON, ALBERTA

R: 403.704.3548 S: 780.305.6855

GILCHRISTGENETICS@OUTLOOK.COM