

32nd ANNIVERSARY



Online **TWO
YEAR OLD**

ABERDEEN ANGUS **BULL SALE**



NEW SALE VENUE!



MARCH 20 & 21 2025 - WAWOTA, SASK

WELCOME

to our 13th Annual Online Offering!



RECONNECTING THE DISCONNECT...closing the gap between commercial and seed-stock industries through a practical approach

Welcome to our offering of forage developed two year old bulls. These are bulls designed and developed for the commercial cattle producer. This set of bulls represents a herd of 134 mother cows. Sorting down to this group was a process that started at birth. When calving on pasture, the females must do it on their own. No assists for calving or getting calves to nurse-no exceptions. Anything that needs human intervention is culled (this includes first calf heifer's). Sticking to this strict measure has created a genetic base where our average assist rate is less than 2%. Next culling measure is dry cows. Cows unable to breed in a 45 day window or fail to wean a calf are removed. We find this step catches the most problematic cattle. It's a cleansing of the least fertile and females with inadequate teat and udders or poor quality colostrum. It also catches poor maternal intelligence, low calf vigour and the dams athletic ability and instinct to jump up and perform her mothering duties. When you don't calve in a pen or barn with watchful cameras, leveraging their genetic ability becomes a critical component. At weaning, calves are back grounded on a forage diet and mineral until turnout on grass in April/May. At this time, we castrate any not fitting with the bunch. This process of not offering a high energy grain diet really separates the true forage efficient from the more dependant cattle. Another cut is made post grazing season when the bulls come home for the winter. At these points, we are again, looking for fleshing ease as compared with the group and any possible structure or attitude issues. The last culling measure occurs right before cataloguing, when we measure scrotal and video bulls. This up close and personal, one on one meeting, is our chance to view their ability to handle an isolated, foreign environment in the pen. If disposition issues are present, they tend to loose the ability to hide it with these circumstances.

Please accept this as your invitation to come anytime to view our offering, the dams of the bulls and their sisters. We have strategically saved a wintering field close to the yard for easier viewing of these females. We are proud of these cows and would be happy to have you go through them.

Online Bidding

Note the change in bidding venue! We are excited to be working with DLMS to host our sale this year.

Respectfully,

Trevor, Cheryl, Brett, Carter Branvold

Trevor 306-577-9141
Cheryl 306-435-7785
Box 205
Wawota, SK. S0G 5A0
Email: gbtangus@sasktel.net
Website: gbtangus.com

2025 MARCH 20 & 21 *2 Year Old* BULL SALE ONLINE

BIDDING CLOSES 6PM CST FRIDAY MARCH 21ST

HOW TO PARTICIPATE IN THE DLMS FARM GATE TIMED AUCTION WITH EXTENDED BIDDING

1. Visit dlms.ca and follow the link to the DLMS Farm Gate timed auction site www.farmgatetimeductions.ca, click the LOGIN/REGISTRATION button. First time users will select the REGISTER button from this page. Fill out the registration form to sign up for a free user account and it allows you to select a username and password for use on all Farm Gate Timed auctions. This program will send you text and email messages whenever there is activity on your favorite lots, or someone challenges your proxy bid and this is why you will be asked for both your current email and cell phone number. If you are a past participant in the Farm Gate Timed auctions simply enter your username and password to continue. This takes you to a list of both current and upcoming Farm Gate Auctions.

2. You can choose your favourite lots in this sale at this time and the program will allow you to open either all sale lots or just your favorite lots on your screen. Any time there is active bidding on a lot you have identified on your favorite list you will get a text and/or an email noting this activity.

3. The program allows you to place a proxy bid on any sale lot. This in fact protects your interest in any lot of interest for you to a specified dollar value you set, when you may not be able to give 100% attention to the sale. If the lot has a \$2000 bid on it and you place a proxy bid of \$3500 into the system, the computer will bid \$2100 for you but if some one else bids \$2200, the computer will again bid for you, this time at \$2300. The system will look after your interest to a maximum of \$3500. If another bidder is on at \$3600, your proxy will no longer be effective and you will no longer have the winning bid on this lot without once again logging in and bidding again or moving your attention to a second lot of interest.

4. At closing time of the sale the entire sale will extend bidding if a bid is placed on any lot in the sale. Any bid received after close time will extend the sale by the time listed on each sale. In most cases the time gets shorter the longer in to extended bidding the sale is. When no bidding occurs for the extended time the computer will declare the sale finished.

5. Following the sale the Consignor or Sale Manager will invoice all buyers in the sale, please contact the seller with questions or to arrange delivery, pick up or shipping of your purchases.

For more info and assistance with bidding contact any of the sale contacts listed on the DLMS Website;
DLMS Farm Gate Timed Auctions ~ Mark Shologan Ph: 780-699-5082

FAQ:

WHAT IS RACEHORSE STYLE SALE CLOSE?

Racehorse style sale close is when the entire sale stays open in extended bidding. This type of sale allows you as the bidder to change to a different lot within the same sale if the bidding has gone in to extended bidding.

HOW WILL EXTENDED BIDDING WORK?

When we get to the close out end time the clock for close extends with any bid placed with less than 5 min on the clock. This type of extended bidding turns the end time to more of a soft time. Extended bidding allows bidders to compete in lots like a real auction and give all bidders the same time to make a decision. Always follow the clock to see how much time remains in the sale you are interested in.



**Videos and Pictures are available online at
www.gbtangus.com or www.dlms.ca**

ABBREVIATIONS AND OUR RATING SYSTEM EXPLAINED

BW = Birth Weight.

1-5 score with 5 being most ideal for lowering birth size. Like our customers we sell to, we do not fuss with birth weights. Cows and heifers calve on grass without issue or they are culled. Trouble free calving is genetically bred in over generations. Because we don't chase extremes, we have not sacrificed calving ease—it's all about balance, Our calving ease scoring system is based on multiple factors. At the time of calving we assign each calf an estimated weight range (we have a pretty good gauge of this from years of weighing calves); then we take into consideration the calf's structure and we look at the momma to see if she has swelling or tears from birthing. We take this calving info and cross reference it with the pedigree and the dams calving history to put together a score that potential customers can use to aid their decision. We feel this system has more merit than simply a birth weight or birth weight EPD, as there is a broader collection of information.

Hip Ht.= Hip Height

Hip height is measured over the hook bones at about 18 months of age, expressed in inches. This measure is done to give those unable to view bulls in person, a good comparison of frame between bulls.

SC = Scrotal

Measured in centimetres, at about 18 months of age.

AOD = Age of Dam

The dam's age when the bull was born.

Udder

1-5 score with 5 being the highest quality teat and udder design. Calving on grass, we need to be extra diligent about teat and udders. Scoring them right at calving, before they are milked down is imperative as the first suckling is the most important. Slightly inflated or miss-shaped teats or bigger, low slung bags all impair the calf's ability for the vital first colostrum.

I.C.% = Inbreeding Coefficient %

An indicator of percent relation to a common ancestor. In an effort to discover clean lines of cattle and create consistency and predictability, most of our cattle carry some degree of line breeding. This percentage simply shows how much of that influence occurs in a particular animal.

Disp.= Disposition

Scored from 1-5 with 5 being the most docile. We are very careful and open with any issues we see. Every time we handle the cattle, they are being scrutinized for proper disposition and work-ability. We find the day we single them out for picturing, is the ultimate test for disposition. Any bad actors will surface with this testing.

BULL DEVELOPMENT... UTILIZING TIME VS INPUTS

The following is an outline of how we develop these bulls from birth to two years of age.

If you are new to visiting our program, you won't see any heavily fed, over conditioned bulls. Bull health, longevity, honest and practical presentation is our priority. These bulls are raised without the use of high energy grain rations, allowing customers to see the actual genetic ability. We also never alter the bulls look by clipping hair or trimming of feet. We feel there is tremendous value when customers can evaluate their next herd sire the same way they evaluate their own cattle back home. This approach is a popular and very much appreciated aspect by commercial cattle producers. Come sale time in March, our bulls will be burly, naturally muscled breeding bulls. We believe it's our responsibility to develop herd sires for our customers that are genetically selected and developed with the ultimate goal of delivering a product that has been ruthlessly sorted with common sense cattle production values. Highly fertile, low maintenance, long lived, balanced cattle is the definition of sustainable and profitable ranching.

TIMELINE... STAGES OF DEVELOPMENT

- May/June: Calved out on grass with only mom's milk, green grass and loose mineral. 2009 was our first year of calving on grass and we have exercised a strict, no touch policy ever since. Following this model has ensured real calving ease, quality udders and maternal intelligence is built in and high fuss management and genetics are bred out!*
- December/January: Calves weaned onto free choice grass/alfalfa hay and baleage. No supplemental grain or starch is fed during this phase. Once stress of the weaning process was complete, they were allowed access to a large paddock to promote exercise.*
- April through October: Weather dependant, winter feeding is typically complete by mid April and cattle are moved to stockpiled perennial pastures with a good quality free choice loose mineral. Cattle then seamlessly transition to summer grazing as the green spring flush begins to dominate the forage sward. From here to fall dormancy, all cattle are dependant solely on the forage growth nature provides along with the free choice mineral-we do not dry lot our bulls for the summer! Maximum gains are never our goal.*
- November through March: The bulls are moved back home and placed on free choice grass/alfalfa hay, baleage and 2 lbs of a protein/mineral supplement per day. This type of diet helps aid in the proper development of the rumen and ensures they will easily transition to their new home. Never confined to a corral, bulls get plenty of daily exercise. Feed, bedding and their water source are all strategically placed a good distance apart. These measures ensure a fit and ready bull for the breeding and grazing season.*
- April: After the bull sale, bulls left here are sent to stockpile forage until delivery.*

REFERENCE SIRES

GBT ELEVATE 1850

1850 05/31/2018 AAA reg#: 19646213 BULL

Sinclair X-Plus 1XX30
GBT X-Plus 1549
GBT Ruby Belle 1279

Willabar Windy 107N
Willabar Countess 138W
Willabar Countess 154H

Sinclair Emulation XXP
Sinclair K Bty 5S1 E013
GBT Rolex 002
GBT Ruby Belle 088
A A R Really Windy 1205
Willabar Pride 2L
Willabar Right Time 34E
Willabar Countess 91E

REF SIRE
1850



1850 is our cheater bull because his progeny discards are among the lowest of any sire group used in our 30+ year history. 1850 is truly one of a kind and is in rare air with his ability to consistently stamp progeny like he does. Ranchers love the sons for the natural muscling, complete and correct phenotype and amazing dispositions. His daughters are equally impressive, with impeccable udders and are super feminine-like a cow should be. Very nice pedigree blending EXT, XXP, Right Time and Really Windy genetics. 1850 is proving to be the next chapter in our program.

GBT X-PLUS 1549

1549 05/26/2015 AAA reg#: 18986503 BULL

Sinclair Emulation XXP
Sinclair X-Plus 1XX30
Sinclair K Bty 5S1 E013

GBT Rolex 002
GBT Ruby Belle 1279
GBT Ruby Belle 088

N Bar Emulation EXT
N Bar Primrose Y3051
Sinclair Idealistic 1R4
N Bar Kinochtry Bty V14951
Leachman Right Time
B B A R Ruby Belle 1134
B B A R Legacy 624
GBT Ruby Belle 782

REF SIRE
1549



One of the most predictable breeding bulls we have raised and was our pick to replace his impressive sire, 1XX30. 1549's stable siring ability to consistently add fleshing ease, moderates frame, improves udders, disposition, rib capacity and will fix those ugly headed, mainstream cattle. Sire of many good progeny, including his outstanding replacement, GBT Elevate 1850. At twelve years of age, 1549's super easy fleshing dam is still in production and is as sound footed and mobile as any cow half her age.

left: Sire - 1XX30



middle: Dam - 1279



right: Son - 1850



★ Bull sale is always the third Friday of March ★

- Bulls are efficiency tested not by giving them all they can eat of a high energy feedlot type diet but rather, how well they can do on a high roughage diet. This best mimics the ability to convert lower quality feeds. It is the most similar comparison to the cow/calf stock-mans needs.

- Allowing our cows to be cows; our cattle have evolved over time to be self reliant. They calve easily and calves nurse without assistance. No need for watchful cameras or confinement to corrals and barns. We calve on grass with less than 2% requiring assistance -this includes our first calf heifers. Anything requiring intervention is culled. Perpetuating problems isn't our practice.

**GBT
WINNER 1724**

1724 05/27/2017 AAA reg#: 19368829 BULL

MH Titan 752
MH Winner 932
MH Mina 53

Sinclair X-Plus 1XX30
GBT Cassie 1331
GBT Cassie 010

O C C Great Plains 943G
MH Melisa 357
Lodge of Wye
M H Mina 836
Sinclair Emulation XXP
Sinclair K Bly 5S1 E013
Leachman Right Time
Biever's Cassie 51F

**REF SIRE
1724**



Winner 1724 was one impressive character and our pick to replace his sire. 1724's dam, at 11 years of age is as good footed as any 11 year old out there. She could maybe be accused of being perfect footed. 1724

progeny are very much in the median of the herd in terms of growth, which in our experience, are the ones that tend to have staying power and are genetically most suited to their environment. We despise and avoid extremes, knowing balance is key. As more daughters move into production, time will be the ultimate proof.

left: Dam - 1331



right: Grandam - 1010



**Sinclair
PLAINS BOSS 5B02**

5B02 02/15/2015 AAA reg#: 18152044 BULL

Sinclair Boss
Sinclair Patriarch 3B47
Sinclair Lady Ida 70C7 2V11

N Bar Emulation Ext A1747
Sinclair Lady Ida 7V19 04F3
Sinclair Lady Ida 04F3 B154

Sinclair Grass Master
Sinclair Lady 6P69 3M18
O C C Great Plains 943G
N Bar Lady Ida S C C 2V11
N Bar Emulation EXT
N Bar Clova Pride U3031
Emulation N Bar 5522
N Bar Lady Ida X2912

**REF SIRE
5B02**



A brief description of 5B02 would be...a sire of beautiful females. He is an absolute cow maker! No surprise, considering his nicely populated lineage of intense Emulation genetics. The first 5B02 daughters are coming eight years old for 2025. Teat and udder quality is on point, along with that pleasing feminine look. 5B02's daughters have quickly dominated our cow herd inventory.

Dam - 7V19



GBT SANDHILLS 2305

2305

2305 04/24/2023 AAA reg#: 20823997 BULL

O C C Eureka 865E	O C C Backstop 888B
Limestone Eureka Z284	Blackbird of R R 1204
O C C Pollyanna 669U	O C C Focus 813F
	O C C Pollyanna 944H
SVR Range Master 2051	Sinclair Bush Ranger 9X16
SVR Blkbird of Rose 3533-6577	BAX Alicia Queen 784-6310
SVR Blkbird of Rose 712-3533	N Bar Emulation EXT
	Blackbird of Volga 0712



AOD: 7 CE: ★★★★★ DISP: ★★★★★ UDDER: ★★★★★

Somewhat of an outcross genetic package here and a pretty neat made fella. He represents the time tested, successful cross of old line Traveler and Emulation genetics. Dam is from a package of cows we brought up from Nebraska and is about as ideal of an Angus cow as can be made. She is a looker and proving to be a producer, fitting into our system and environment well. We've already retained a very nice 1850 daughter. Expect fleshing ease and quality udders here.

- Notes -

Dam - 3533-6577



GBT WINDFALL 2318

2318

2318 05/10/2023 AAA reg#: 20756119 BULL

MH Winner 932	MH Titan 752
GBT Winner 1724	MH Mina 53
GBT Cassie 1331	Sinclair X-Plus 1XX30
	GBT Cassie 010
B B A R Legacy 624	O C C Legacy 839L
GBT Tilda 1351	B B A R Ruby Majorette 124'96
Willabar Tilda 106S	Willabar Windy 107N
	Willabar Tilda 64P



AOD: 10 CE: ★★★★★ DISP: ★★★★★ UDDER: ★★★★★

Pedigree stacked top and bottom for longevity. Paternal grand dam, 1331 still in production at 11 years. Maternal grand dam, 106S produced to 16 years.

- Notes -

left: Maternal Sibling - 1870



right: Maternal Sibling - 2004



GBT PRIVATE LABEL 2320

2320

2320 05/12/2023 AAA reg#: 20754228 BULL

Sinclair Patriarch 3B47
Sinclair Plains Boss 5B02
 Sinclair Lady Ida 7V19 04F3

B B A R Legacy 624
GBT Cleo 1370
 GBT Cleo 0101

Sinclair Boss
 Sinclair Lady Ida 70C7 2V11
 N Bar Emulation Ext A1747
 Sinclair Lady Ida 04F3 B154
 O C C Legacy 839L
 B B A R Ruby Majorette124'96
 Sinclair Time Out 8P1
 GBT Cleo 871



AOD: 10 CE: ★★★★★☆ DISP: ★★★★★☆ UDDER: ★★★★★★

Dam is ideally made, very moderate framed and highly fertile. She turns 12 years old this year and still maintains an impeccable udder. This Plains Boss son has a little more scale than most of his pen mates.

left: Dam - 1370

next: Full Brother - 1918

next: Mat Sib - 2016

right: Mat Sib - 2139



GBT 3 X-PLUS 2328

2328

2328 05/15/2023 AAA reg#: 20754227 BULL

Sinclair X-Plus 1XX30
GBT X-Plus 1549
 GBT Ruby Belle 1279

GBT Elevate 1850
GBT Cassie 2138
 GBT Cassie 1645

Sinclair Emulation XXP
 Sinclair K Bty 5S1 E013
 GBT Rolex 002
 GBT Ruby Belle 088
 GBT X-Plus 1549
 Willabar Countess 138W
 GBT X-Plus 1460
 GBT Cassie 1296



AOD: 2 CE: ★★★★★☆ DISP: ★★★★★★ UDDER: ★★★★★★

This triple bred X-Plus son exemplifies all the great traits this line is known for. Fleshing ease, body mass, outstanding dispositions and I'll go out on a limb and predict 2328 will sire daughters with perfect udders. This guy being a 1549 son makes him a brother to the outstanding GBT Elevate 1850 herd bull who is sire to many bulls in this offering. Grand dam(1645) has calved first cycle 5 out of 6 times. She is also the grand dam of bulls 2366 and 23100-influential genetic strength! **We will be drawing 100 straws of semen for in herd use.**

left: Sire and Grandsire - 1549

middle: Grandam - 1645

right: Great Grandam - 51F



GBT ELEVATION 2332

2332

2332 05/16/2023 AAA reg#: 20738153 BULL

GBT X-Plus 1549
GBT ELEVATE 1850
 Willabar Countess 138W

 Sinclair Plains Boss 5802
GBT Cassie 1702
 GBT Cassie 1130

Sinclair X-Plus 1XX30
 GBT Ruby Belle 1279
 Willabar Windy 107N
 Willabar Countess 154H
 Sinclair Patriarch 3B47
 Sinclair Lady Ida 7V19 04F3
 Sinclair Jipsey King 9JP40
 GBT Cassie 56R



AOD: 6 CE: ★★★★★☆ DISP: ★★★★★★ UDDER: ★★★★★☆

Elevate 1850 sons have been hot commodities. Masculine, muscular, easy fleshing and soft natured sons and brilliant uddered, beautiful daughters.



GBT WINDFALL 2335

2335

2335 05/17/2023 AAA reg#: 20754230 BULL

MH Winner 932
GBT Winner 1724
 GBT Cassie 1331

 Sinclair Plains Boss 5802
GBT Cleo 1835
 GBT Cleo 1515

MH Titan 752
 MH Mina 53
 Sinclair X-Plus 1XX30
 GBT Cassie 010
 Sinclair Patriarch 3B47
 Sinclair Lady Ida 7V19 04F3
 Locke of Wye UMF 10398
 GBT Cleo 1323



AOD: 5 CE: ★★★★★☆ DISP: ★★★★★★ UDDER: ★★★★★★

2335's dam is a producer of herd bulls, as she's only produced one daughter so far. Her sons always catch our eye and we have used several back in our program(watch for progeny off one of those sons in next years sale). Bulls 2335, 2352, 2353, 2369, 2382 are all 3/4 siblings. 2335 has no extreme features-maybe that's what makes the good ones truly good in the long run. Note of interest, the mother of 2335 and bull 2367 share the same Cleo 1515 dam.



GBT E-TRANSFER 2338

2338

2338 05/18/2023 AAA reg#: 20738154 BULL

GBT X-Plus 1549	Sinclair X-Plus 1XX30
GBT ELEVATE 1850	GBT Ruby Belle 1279
Willabar Countess 138W	Willabar Windy 107N
	Willabar Countess 154H
B B A R Legacy 624	O C C Legacy 839L
GBT Cleo 1237	B B A R Ruby Majorette124'96
GBT Cleo 904	Bad Lands Forte 5S
	KBJ Cleo 621R



AOD: 11 CE: ★★★★★☆ DISP: ★★★★★★ UDDER: ★★★★★☆

The best of Elevate 1850, Legacy 624, Forte 5S and the Cleo cow family. Dam has been powerfully productive and very fertile. 11 progeny produced so far with all but two born in the first cycle. We've sampled several of her sons in the past and currently have a maternal brother serving junior herd-sire duties. Turning 13 this spring, this cow has proven her longevity and adaptive ability. Maybe she should be renamed, Never Miss. *We will be drawing 100 straws of semen for in herd use.*



GBT ELEVATION 2340

2340

2340 05/19/2023 AAA reg#: 20738155 BULL

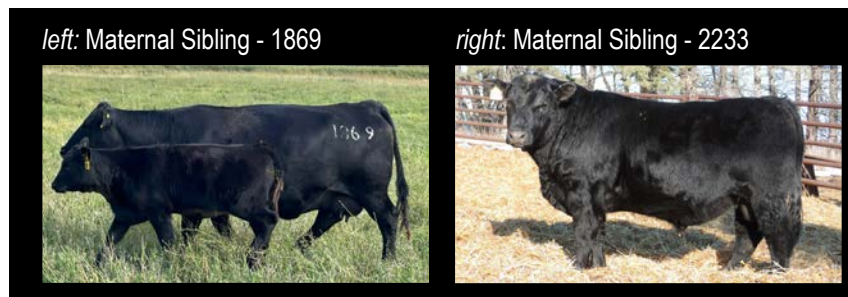
GBT X-Plus 1549	Sinclair X-Plus 1XX30
GBT ELEVATE 1850	GBT Ruby Belle 1279
Willabar Countess 138W	Willabar Windy 107N
	Willabar Countess 154H
Sinclair Plains Boss 5802	Sinclair Patriarch 3B47
GBT Miss Morrison 1869	Sinclair Lady Ida 7V19 04F3
GBT Miss Morrison 1436	Sinclair X-Plus 1XX30
	GBT Miss Morrison 753



AOD: 5 CE: ★★★★★☆ DISP: ★★★★★★ UDDER: ★★★★★☆

Yet another bull that has a beautiful Plains Boss mom. Note the ideal udder score. Added bonus is she has always calved first cycle. We believe in her consistent production abilities enough, that we have sampled several of her sons in the past.

- Notes -



GBT ENERGYSTAR 2RB 2341

2341

2341 05/19/2023 AAA reg#: 20820097 BULL

Sinclair X-Plus 1XX30
GBT X-Plus 1549
 GBT Ruby Belle 1279

 GBT Champion 1827
GBT Ruby Belle 2101
 GBT Ruby Belle 1279

Sinclair Emulation XXP
 Sinclair K Bty 5S1 E013
 GBT Rolex 002
 GBT Ruby Belle 088
 Chez of Wye UMF 10824
 GBT Mayflower 1651
 GBT Rolex 002
 GBT Ruby Belle 088



AOD: 2 CE: ★★★★★ DISP: ★★★★★ UDDER: ★★★★★☆

Tracing twice to the efficiency and fleshing ease matriarch, Ruby Belle 1279 and the great Mayflower 1651 is tucked in there too. Dam is a first calf heifer who's calved first cycle with her first two attempts as a momma. 2341 is a mirror image to his sire, 1549 when he was this age. I wish we could say we knew the impact 1549 would have when we decided to use him. That wasn't the case but maybe 2341 will follow in his footsteps.

- Notes -

Paternal & Maternal Grandam - 1279



right: Maternal Grandsire - 1827



GBT ELEVATION 2344

2344

2344 05/20/2023 AAA reg#: 20738156 BULL

GBT X-Plus 1549
GBT ELEVATE 1850
 Willabar Countess 138W

 Sinclair X-Plus 1XX30
GBT Cassie 1331
 GBT Cassie 010

Sinclair X-Plus 1XX30
 GBT Ruby Belle 1279
 Willabar Windy 107N
 Willabar Countess 154H
 Sinclair Emulation XXP
 Sinclair K Bty 5S1 E013
 Leachman Right Time
 Biever's Cassie 51F



AOD: 10 CE: ★★★★★☆ DISP: ★★★★★☆ UDDER: ★★★★★☆

The very influential Cassie cow family and strong Emulation influence in this bull, that traces many, many times to the great female maker, EXT. 2344 has had a look since day 1. He is also maternal brother to Winner 1724(sire of several sons in this sale). Dam is turning 12 years old this spring and is still as close to perfect footed as can be made. This bull would compliment many breeders herds. *We will be drawing 100 straws of semen for in herd use.*

left: Dam: 1331



middle: Grandam - 1010



right: Great Grandam - 51F



**GBT
2 X-PLUS 2345**

2345

2345 05/20/2023 AAA reg#: 20754232 BULL

Sinclair X-Plus 1XX30	Sinclair Emulation XXP
GBT X-Plus 1549	Sinclair K Bty 5S1 E013
GBT Ruby Belle 1279	GBT Rolex 002
	GBT Ruby Belle 088
GBT Elevate 1850	GBT X-Plus 1549
GBT Cassie 2115	Willabar Countess 138W
GBT Cassie 1426	GBT Locomotive 1239
	GBT Cassie 723



AOD: 2 CE: ★★★★★☆ DISP: ★★★★★★ UDDER: ★★★★★★

A heifers first calf. We have found that if X-Plus 1549 shows up two or more times, the udders and dispositions are exceptional. Strong Cassie cow family.

- Notes -

Grandam - 1426



**GBT
ELEVATION 2346**

2346

2346 05/20/2023 AAA reg#: 20738157 BULL

GBT X-Plus 1549	Sinclair X-Plus 1XX30
GBT ELEVATE 1850	GBT Ruby Belle 1279
Willabar Countess 138W	Willabar Windy 107N
	Willabar Countess 154H
GBT Champion 1841	Chez of Wye UMF 10824
GBT Cassie 2065	GBT Cassie 1659
GBT Cassie 1331	Sinclair X-Plus 1XX30
	GBT Cassie 010



AOD: 3 CE: ★★★★★☆ DISP: ★★★★★★ UDDER: ★★★★★★

One of the most populated and arguably best adapted cow lines in our herd is the Cassie family. 2346 traces twice to both the Cassie and X-Plus line. Dam has also calved first cycle with her first three progeny. 3/4 brothers to 2381, 2398, 23100.

- Notes -

Grandam - 1331



GBT WINDFALL 2348

2348 05/23/2023 AAA reg#: 20754234 BULL

MH Winner 932
GBT Winner 1724
 GBT Cassie 1331

GBT Locomotive 1239
GBT Cassie 1426
 GBT Cassie 723

MH Titan 752
 MH Mina 53
 Sinclair X-Plus 1XX30
 GBT Cassie 010
 B B A R Legacy 624
 GBT Blossom 743
 B B A R Nugget 322
 GBT Cassie 56R

2348



AOD: 9 CE: ★★★★★☆ DISP: ★★★★★☆ UDDER: ★★★★★☆

Again, another bull tracing twice to the Cassie cow family. Some old line genetics from our program represented here. This typically indicates longevity. Dam(1426) is also in the pedigree of bulls 2345 and 2353.

- Notes -

left: Dam - 1426



right: Maternal Sibling - 1747



GBT WINDFALL 2352

2352 05/25/2023 AAA reg#: 20754237 BULL

MH Winner 932
GBT Winner 1724
 GBT Cassie 1331

Sinclair Plains Boss 5802
GBT Princess 1741
 Prairielane 2029 Band 6115

MH Titan 752
 MH Mina 53
 Sinclair X-Plus 1XX30
 GBT Cassie 010
 Sinclair Patriarch 3B47
 Sinclair Lady Ida 7V19 04F3
 Prairielane Ideal 0051-2029
 Prairielane 9012 Band 3127

2352



AOD: 6 CE: ★★★★★☆ DISP: ★★★★★☆ UDDER: ★★★★★☆

In our opinion, there is a lot of value tied into this bull. Winner, X-Plus, Cassie, Plains Boss and the 1741 and 6115 cows. Soundness, longevity and good udders best defines this genetic package. Bulls 2335, 2352, 2353, 2369, 2382 are all 3/4 siblings.

left: Dam: 1741



middle: Maternal Sibling - 2038



right: Maternal Sibling - 2255



GBT WINDFALL 2353

2353

2353 05/25/2023 AAA reg#: 20754238 BULL

MH Winner 932	MH Titan 752
GBT Winner 1724	MH Mina 53
GBT Cassie 1331	Sinclair X-Plus 1XX30
	GBT Cassie 010
Sinclair Plains Boss 5802	Sinclair Patriarch 3B47
GBT Cassie 1747	Sinclair Lady Ida 7V19 04F3
GBT Cassie 1426	GBT Locomotive 1239
	GBT Cassie 723



AOD: 6 CE: ★★★★★☆ DISP: ★★★★★☆ UDDER: ★★★★★☆

Dam has put two daughters in the herd and this is her second son making the bull sale. Royally bred, with the Cassie cow line showing up top and bottom in the pedigree. Grand dam stayed here until 10 years of age. Bulls 2335, 2352, 2353, 2369, 2382 are all 3/4 siblings.



GBT X-PLUS 2358

2358

2358 05/26/2023 AAA reg#: 21049798 BULL

Sinclair X-Plus 1XX30	Sinclair Emulation XXP
GBT X-Plus 1549	Sinclair K Bty 5S1 E013
GBT Ruby Belle 1279	GBT Rolex 002
	GBT Ruby Belle 088
GBT Prairie Boss 1909	Sinclair Plains Boss 5802
GBT Lady Ann 2184	GBT Cleo 1237
GBT Lady Ann 1816	Sinclair Plains Boss 5802
	GBT Lady Ann 1621



AOD: 2 CE: ★★★★★☆ DISP: ★★★★★☆ UDDER: ★★★★★☆

Direct X-Plus 1549 son which makes him a paternal brother to GBT Elevate 1850. Also, note the exceptional Cleo 1237 cow who is still in production and is the dam of the lot 2338 bull. Note the exceptional udder score on this bulls dam.

- Notes -



GBT ELEVATION 2366

2366

2366 05/28/2023 AAA reg#: 20738160 BULL

GBT X-Plus 1549
GBT ELEVATE 1850
 Willabar Countess 138W

 Sinclair Plains Boss 5802
GBT Cassie 2064
 GBT Cassie 1645

Sinclair X-Plus 1XX30
 GBT Ruby Belle 1279
 Willabar Windy 107N
 Willabar Countess 154H
 Sinclair Patriarch 3B47
 Sinclair Lady Ida 7V19 04F3
 GBT X-Plus 1460
 GBT Cassie 1296



AOD: 3 CE: ★★★★★☆ DISP: ★★★★★★ UDDER: ★★★★★★

Udder score, pedigree and cow family is stacked here. The grand dam(1645 cow) has done a wonderful job for us, putting 5 daughters back into the herd. Grand dam has calved first cycle all but one year and this guys dam is proving to be equally fertile. Neat overall package offered here.

- Notes -

left: Dam - 2064



right: Grandam - 1645



GBT ELEVATION 2367

2367

2367 05/29/2023 AAA reg#: 20738161 BULL

GBT X-Plus 1549
GBT ELEVATE 1850
 Willabar Countess 138W

 Locke of Wye UMF 10398
GBT Cleo 1515
 GBT Cleo 1323

Sinclair X-Plus 1XX30
 GBT Ruby Belle 1279
 Willabar Windy 107N
 Willabar Countess 154H
 Churchill of Wye
 Lottie of Wye UMF 9941
 B B A R Legacy 624
 GBT Cleo 904



AOD: 8 CE: ★★★★★☆ DISP: ★★★★★★ UDDER: ★★☆☆☆☆

Note the close relationship in pedigree and physical make up with the excellent 2338 and 2335 bulls. This bulls mom is also the dam of the really good mother to bull 2335. Elevate 1850 progeny have a cool nature, have nice winter hair coats and the females are making beautiful young cows. At 9 years of age, we udder scored his mom(1515 cow) that dropped below our threshold, so we moved her out of our herd.

left: Dam - 1515



next: Maternal Sibling - 1753



next: Maternal Sibling - 2030



right: Maternal Sibling - 1835



**GBT
WINDFALL 2369**

2369

2369 05/29/2023 AAA reg#: 21049799 BULL

MH Winner 932	MH Titan 752
GBT Winner 1724	MH Mina 53
GBT Cassie 1331	Sinclair X-Plus 1XX30
	GBT Cassie 010
Sinclair Plains Boss 5802	Sinclair Patriarch 3B47
GBT Blossom 1925	Sinclair Lady Ida 7V19 04F3
GBT Blossom 1433	GBT Locomotive 1239
	GBT Blossom 1136



AOD: 4 CE: ★★★★★☆ DISP: ★★★★★☆ UDDER: ★★★★★★

Plenty of genetic value here. Grand dam(1433)calved first cycle with 5 of her 8 calves, until we lost her at 10 years of age. Pedigree is fully stacked and culminates the most influential bulls of the past 18 years here, with Legacy, X-Plus, Plains Boss and Winner. Kinda neat, strong made bull here that will be appreciated. Bulls 2335,2352,2353,2369, 2382 are all 3/4 siblings.

left: Dam - 1925



right: Maternal Sibling - 2179



**GBT
ELEVATION 2376**

2376

2376 05/30/2023 AAA reg#: 20738163 BULL

GBT X-Plus 1549	Sinclair X-Plus 1XX30
GBT ELEVATE 1850	GBT Ruby Belle 1279
Willabar Countess 138W	Willabar Windy 107N
	Willabar Countess 154H
MH Winner 932	MH Titan 752
GBT Cassie 1784	MH Mina 53
GBT Cassie 1325	B B A R Legacy 624
	GBT Cassie 723



AOD: 6 CE: ★★★★★☆ DISP: ★★★★★☆ UDDER: ★★★★★★

Dam is ideal in her phenotype and in her producing ability. So far, she's calved first cycle with 5 of 6 progeny. We are liking these Winner daughters, their udders and foot structure is very ideal. Dam weaned another son that looks promising for the 2026 sale. 3/4 brother sells as 23105.

- Notes -

left: Dam - 1784



right: Maternal Sibling - 2036



GBT ELEVATION 2381

2381

2381 06/01/2023 AAA reg#: 20738165 BULL

GBT X-Plus 1549
GBT ELEVATE 1850
 Willabar Countess 138W

Chez of Wye UMF 10824
GBT Rosebud 1813
 GBT Rosebud 1113

Sinclair X-Plus 1XX30
 GBT Ruby Belle 1279
 Willabar Windy 107N
 Willabar Countess 154H
 Quintes of Wye UMF 10502
 Clova of Wye UMF 8996
 B B A R Legacy 624
 GBT Rosebud 804



AOD: 5 CE: ★★★★★☆ DISP: ★★★★★★ UDDER: ★★☆☆☆☆

Well constructed bull with a mom who was super fertile, calving first cycle. To be transparent, we moved her out of the herd due to one of her teats being abnormal in shape and size. We do have a full sister to this bull that has a very ideal teat and udder structure though, which is a testament to the ability Elevate 1850 has on correcting udders. 3/4 sibling to 2346, 2398, 23100.

- Notes -

Maternal Sibling - 2012



GBT WINDFALL 2382

2382

2382 06/02/2023 AAA reg#: 20754249 BULL

MH Winner 932
GBT Winner 1724
 GBT Cassie 1331

Sinclair Plains Boss 5802
GBT Lady Lynn 1828
 GBT Lady Lynn 1344

MH Titan 752
 MH Mina 53
 Sinclair X-Plus 1XX30
 GBT Cassie 010
 Sinclair Patriarch 3B47
 Sinclair Lady Ida 7V19 04F3
 B B A R Legacy 624
 GBT Lady Lynn 34R



AOD: 5 CE: ★★★★★☆ DISP: ★★★★★★ UDDER: ★★★★★★

Do you value the mothers of your bulls being highly fertile? How about a nice phenotype? Then check those boxes off here. Dam is a member of the first cycle calving club and is eye catchy. Bulls 2335, 2352, 2353, 2369 and 2382 are all 3/4 brothers-and look it! Put these bulls together to increase consistency in your calf crop.

- Notes -

left: Dam - 1828



right: Maternal Sibling 2123



GBT PERSEVERE 2390

2390

2390 06/03/2023 AAA reg#: 20754252 BULL

Sinclair Patriarch 3B47
Sinclair Plains Boss 5B02
 Sinclair Lady Ida 7V19 04F3

Sinclair Boss
 Sinclair Lady Ida 70C7 2V11
 N Bar Emulation Ext A1747
 Sinclair Lady Ida 04F3 B154
 Chez of Wye UMF 10824
 GBT Mayflower 1651
 GBT X-Plus 1460
 GBT Cassie 1228

GBT Champion 1827
GBT Cassie 2167
 GBT Cassie 1659



AOD: 2 CE: ★★★★★★ DISP: ★★★★★★ UDDER: ★★★★★★

Heifer's first calf. Study the goodness and influence of all the Plains Boss daughters in our herd. 2320, 2390 are the only direct Plains Boss sons this year and will be very limited going forward, with just a small bank of semen left. Utilize these sons to build a functional cow herd. This guy is very much his fathers son, with similar qualities in phenotype.

- Notes -

left: Grandam - 1659



right: Maternal Grandsire - 1827



GBT ELEVATION 2398

2398

2398 06/05/2023 AAA reg#: 20738169 BULL

GBT X-Plus 1549
GBT ELEVATE 1850
 Willabar Countess 138W

Sinclair X-Plus 1XX30
 GBT Ruby Belle 1279
 Willabar Windy 107N
 Willabar Countess 154H
 Quintes of Wye UMF 10502
 Clova of Wye UMF 8996
 GBT Locomotive 1239
 GBT Lass 1263

Chez of Wye UMF 10824
GBT Lass 1946
 GBT Lass 1677



AOD: 4 CE: ★★★★★★ DISP: ★★★★★★ UDDER: ★★★★★★

2346, 2381, 2398, 23100 are all 3/4 siblings. Udder score on this guys dam is slightly lower than we like to see but her production ability, fleshing ease and perfect first cycle calving record is also worth mentioning. Dam has placed two very nice daughters in herd.

- Notes -

Dam - 1946



GBT ELEVATION 23100

23100

23100 06/06/2023 AAA reg#: 20738171 BULL

GBT X-Plus 1549
GBT ELEVATE 1850
 Willabar Countess 138W

Chez of Wye UMF 10824
GBT Cassie 1847
 GBT Cassie 1645

Sinclair X-Plus 1XX30
 GBT Ruby Belle 1279
 Willabar Windy 107N
 Willabar Countess 154H
 Quintes of Wye UMF 10502
 Clova of Wye UMF 8996
 GBT X-Plus 1460
 GBT Cassie 1296



AOD: 5 CE: ★★★★★☆ DISP: ★★★★★★ UDDER: ★★★★★☆

Bulls 2346, 2381, 2398, 23100 are all Elevate 1850/Chez combinations. Moderation of frame and fleshing ease should be the expectation with this cross. Note the good Cassie 1645 cow within the genetic profile.

- Notes -



GBT ELEVATION 23105

23105

23105 06/08/2023 AAA reg#: 20738173 BULL

GBT X-Plus 1549
GBT ELEVATE 1850
 Willabar Countess 138W

MH Winner 932
GBT Lady Fanny 1739
 GBT Lady Fanny 1591

Sinclair X-Plus 1XX30
 GBT Ruby Belle 1279
 Willabar Windy 107N
 Willabar Countess 154H
 MH Titan 752
 MH Mina 53
 Calum of Wye UMF 10453
 GBT Lady Fanny 1309



AOD: 6 CE: ★★★★★☆ DISP: ★★★★★★ UDDER: ★★★★★☆

A lot of genetic value in this bull. His dam and cow family is influential through their solid production ability. Very good full sibling sold in 2023 sale and we also have two daughters retained from this guys mom. Dam, grand dam, great grand dam and great, great grand dam were all cows of high quality. We will be using a maternal brother to this bull in 2025. 23105 is a 3/4 sibling to lot 2376.



GBT ELEVATION 23106

23106

23106 06/08/2023 AAA reg#: 20738174 BULL

GBT X-Plus 1549
GBT ELEVATE 1850
 Willabar Countess 138W

 Sinclair Plains Boss 5802
GBT Luetta 1910
 GBT Luetta 032

Sinclair X-Plus 1XX30
 GBT Ruby Belle 1279
 Willabar Windy 107N
 Willabar Countess 154H
 Sinclair Patriarch 3B47
 Sinclair Lady Ida 7V19 04F3
 B B A R Legacy 624
 GBT Luetta 3P



AOD: 4 CE: ★★★★★☆ DISP: ★★★★★★ UDDER: ★★★★★★

The Elevate 1850/Plains Boss combination is a lights out mating. 2332, 2340, 2366, 23106, 23126 are all 3/4 brothers and is proof of this statement. Predictable, consistent and adaptable cattle like this, carry tremendous genetic value. Those two bulls (1850 and Plains Boss) in a pedigree are reason enough to make special note. Sound, solid, strong built bull.

- Notes -

GBT EMBOSSSED 2147-23126 23126

23126 06/18/2023 AAA reg#: 21049797 BULL

GBT Elevate 1850
GBT Embossed 2147
 GBT Lady Fanny 1725

 Sinclair Plains Boss 5802
GBT Mayflower 1740
 GBT Mayflower 1350

GBT X-Plus 1549
 Willabar Countess 138W
 Sinclair Plains Boss 5802
 GBT Lady Fanny 1309
 Sinclair Patriarch 3B47
 Sinclair Lady Ida 7V19 04F3
 Bad Lands Forte 5S
 GBT Mayflower 855



AOD: 6 CE: ★★★★★☆ DISP: ★★★★★★ UDDER: ★★★★★★

A son of Embossed 2147. A bull we sampled before selling in the 2023 sale. 23126 carries two shots of Plains Boss which means he traces over 90 times to the Angus breeds female making phenom, Emulation 31! Dam weaned an impressive 3/4 sister to this bull in 2024. Foundation Mayflower cow family here that's been with us since the beginning.

- Notes -

left: Sire - 2147



right: Maternal Sibling - 2143



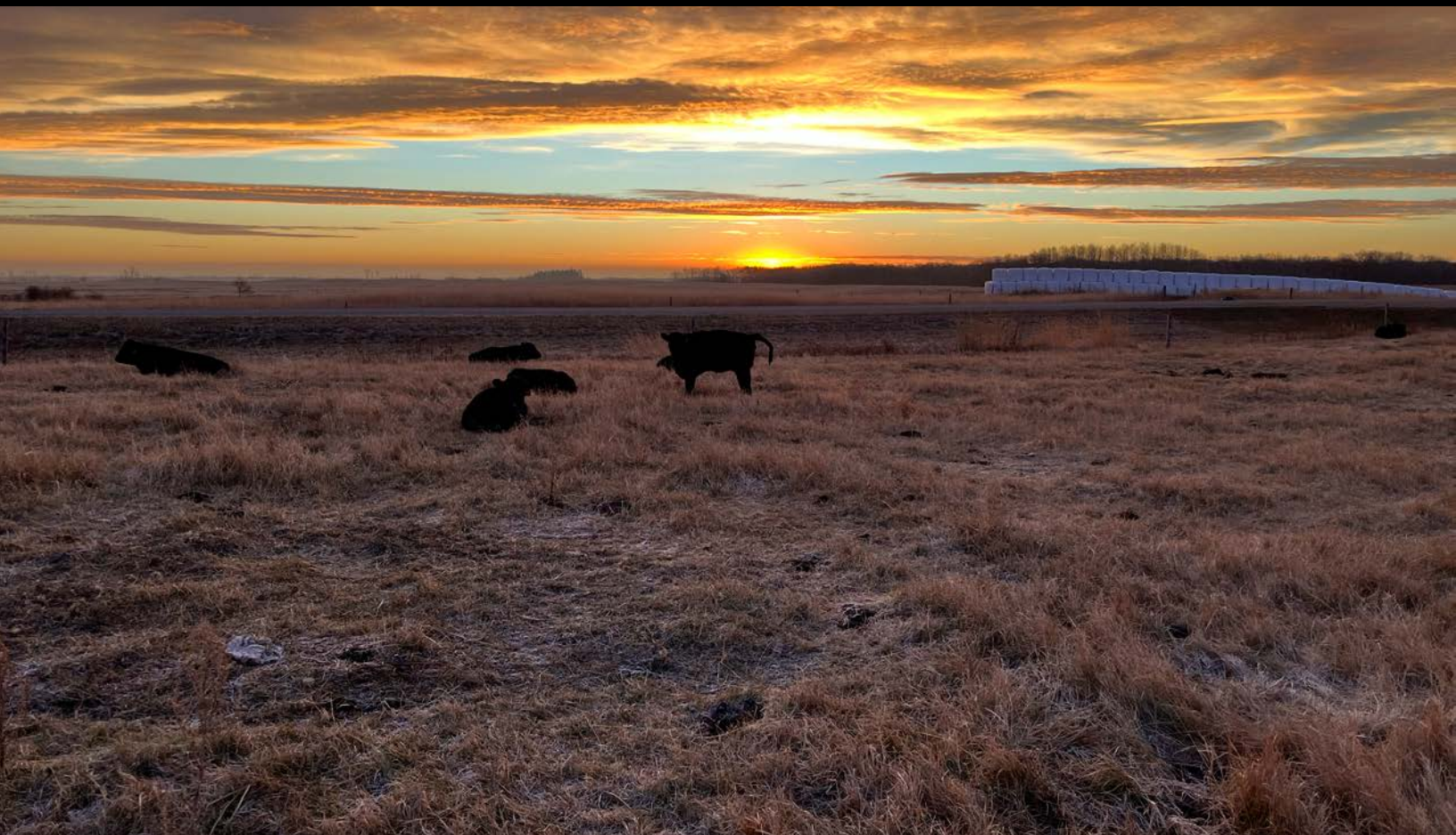
Bull Keep/Insurance/Delivery

Bulls can be left at GBT Angus after the sale but please specify when you want to pick them up or have them delivered. We charge \$3/day per bull commencing April 1. Insurance isn't mandatory but highly recommended for any bulls staying after the sale. We do our best to keep the bulls as content as possible, but as spring draws closer these fellas get more active and rambunctious and accidents can happen. If you'd like your bull delivered, we charge \$1 per loaded km. If we can organize several bulls delivered to similar areas, in the same trip, we do our best to spread that mileage fee among the load.

A Balanced Approach - Our Philosophy:

Why do we base price all our bulls the same?

Quite simply, it's the by-product of creating consistency. Years ago, we set out with the goal of making every female and bull as similar as possible. This way, our customers could choose from a whole pen of bulls versus just one or two "good ones". Our genetic process is not about maximizing traits. Profitable, sustainable cattle production does not tolerate extremes so we do our best to avoid them. The instant that we push and dictate what our cattle should be, is precisely the time balance is compromised. A system balanced by the environment is always more sustainable and profitable. Our breeding objective over the past 30 some years has never been about trying to create the "one home run" but rather to develop the most uniform set of cows in type and production ability, in a least cost environment. By default, the pen of bulls will certainly carry this same genetic suite of traits.





Trevor & Cheryl Branvold
Box 205
Wawota, SK, S0G 5A0
306-577-9141



NEW SALE VENUE!



FERTILE, FUNCTIONAL, PRACTICAL, PREDICTABLE ANGUS GENETICS
The Bull Business - Done Different.