

2025



1 PM MST INNISFAIL, AB  
*February 11, 2025*



### SALE DAY PHONES

Rodney Hollman 403-588-8620  
Cody Congdon 403-350-5791  
Darrel Hickman 780-581-4510  
Tanya Hollman 403-352-9283  
Harvey Hollman 403-588-3913  
Dale Congdon 403-350-9830  
Melissa Congdon 403-586-3144

### SALE STAFF

#### Auctioneer

Ryan Dorran 403-507-6483

#### Ringmen

Craig Flewelling 403-556-0515

### INSURANCE

Doreen Flewelling 403-556-5886

### ACCOMODATIONS

Innisfail is only 10 minutes away and Red Deer is 15 with multiple hotel options. Please contact any of the consignors if you require help booking accomodations

### ONLINE BIDDING

Online bidding will be available through:  
LiveAuctions - [www.liveauctions.tv](http://www.liveauctions.tv)  
Nicki Ross 587-377-1580



DLMS - [www.dlms.ca](http://www.dlms.ca)  
Mark Shologn 780-699-5082



### TERMS & CONDITIONS

All cattle sell under the standard terms set forth by the Draft Pick sale group breeders. Document available upon request. All bulls returning to breeders places will require insurance.

### DELIVERY

Bulls will be Breeding Soundness checked and delivered to central points across western Canada or nearest point of entry throughout March. For any Buyers that want their newly purchased bulls managed at the sellers place beyond April 1st, those arrangements will need to be made at time of purchase. Sellers will offer to feed and manage those bulls until they are required free of charge. The buyer is then responsible for all transportation arrangements and costs.

### EXPORT CATTLE

All cattle sell with appropriate health and consignors will cover the costs of health papers for all international sales. Delivery of cattle will be to nearest port of entry into the US, buyer is responsible for all transportation costs beyond nearest port of entry.

### EXCHANGE RATE

International Buyers exchange rate will be announced from the block prior to the sale in USD for all international sales.

### US BUYERS

Currently the strong US dollar is proving a great opportunity to purchase new genetics with a massive savings. Capitalize while you can!!! We sell multiple bulls every year into the US and that helps cut transport costs for everyone.

### LIABILITY

The consignors and host facility will assume no legal responsibility for any injury's or hardship that may result by attending the event. All livestock have been handled many time on foot safely, anyone entering bull pens & facility do so at their own risk.

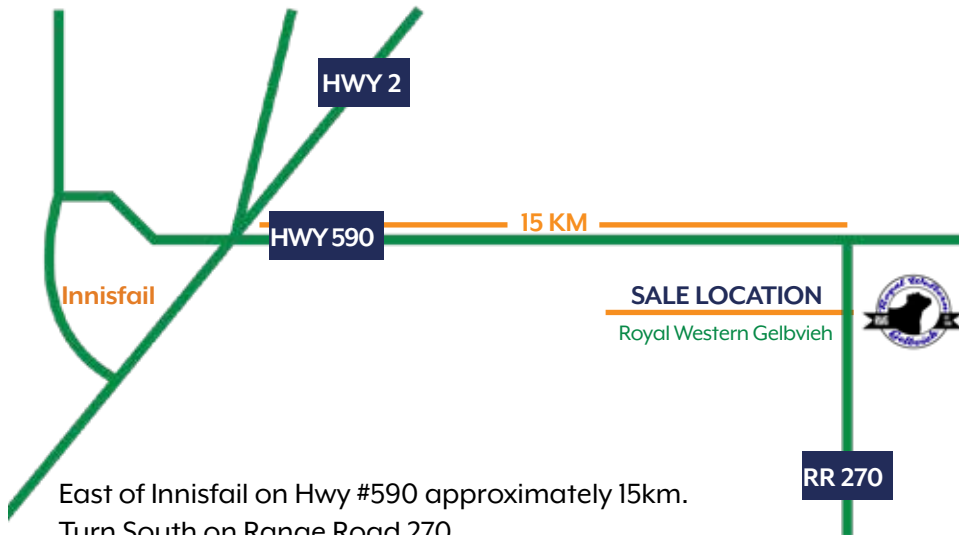
### CATALOG

All information printed is to the best of our ability at time of print. Any errors or updated information will be provided on supplement sheets sale day. All announcements from the block will precede over printed information.





**1 PM MST INNISFAIL, AB**  
*February 11, 2025*



East of Innisfail on Hwy #590 approximately 15km.  
 Turn South on Range Road 270.  
 RWG is the first place on the East side.

The 2025 edition of the Draft Picks Bull sale is the most exciting offering to date, with an expanded breeder profile to offer our customers the best in industry. It's with excitement for the industry that we will once again open the doors to our breeding programs for your appraisal all in one location. With multiple new sire groups, cows family's and outcross ET matings, it will be the most diverse offering with genetics to suite all of industry's needs.

This business is built on the dedication and hard work of exceptional people, across the entire farming and ranching community. As a sale group of families we are excited to see a phase in industry where cow calf producers are being rewarded for the product they take pride in producing. On behalf of Rocky Top Gelbvieh, CDC Farms, Stone Gate Farms, 4DJ Farms & Royal Western Gelbvieh we look forward to helping you source the genetics you require to add to your bottom line. We pride ourselves on working as a team to produce the best set of genetics we can. Our breeding programs will bring to you slightly different genetic bases, providing outcross genetics to previous purchases every year. The Draft Picks sale group all passionately believe in consistent multi-trait breeding programs. Bulls will have current performance data and scrotal measurements listed the week of the sale to help with your selections.

The bulls and commercial females once again will be on display over the entire 3-day open house, Feb 8-10th, in big pens that are easy for you to evaluate and see in a natural setting. Come for the food and drinks all day @ the open house, it's the best way to evaluate your next sires, then make your 2025 Draft Picks from an excellent set of bulls.

Mark your Calendars and join us Tuesday Feb 11th for our 6th annual sale.

Thank you for your continued support!

Sincerely,

*2025 Draft Picks Bull Sale Team*

# Herd Health, Quality Assurance, Retained Ownership & EPD Explanation

**Disease Prevention** - All the individual breeding programs that represent the Draft Picks sale group run extensive, strict herd health programs to help ensure that cattle are born healthy and stay healthy at our operations and are set up for success at yours!

## Calves

@Birth - Inforce 3 (IBR,PI3,BRSV) & Toltrazuril- Coccidiosis prevention  
@Pasture kick out - ONCE PMH IN (mannheimia & pasteurella), - Express 5 HS (IBR,PI3,BRSV,BVD type 1 & 2 + H-Somnus)  
@Weaning- Pyramid 5 + Presponse (IBR,PI3,BRSV,BVD type 1 & 2, mannheimia & Haemolytica)  
- Visions 8 Somnus w/SPUR

**Sale Bulls** - Fusoguard (foot rot & liver abscesses) " 2 shots for all yearlings and 2 yr-olds are boosted" - Express 5 HS & Covexin Plus 8-way

**Breeding Females** - @ pre-calving Scour Bos 9 & 4 complete program plus Covexin Plus 8-way @ pre breeding Express 5 FP VL5 & Covexin Plus 8-way

**Whole Herd** - Animals are dewormed and parasite control with utilization of Safe-Guard & Ivermectin pour on with Cylence 25-30 days apart for optimum protection.

**Nutrition** - Breeding Females: Our cow herds are treated and managed in a tough environment, where they need to be efficient with resources to thrive. We Do Not pamper our cows just because they are seed-stock genetics, they work alongside our commercial females and are asked to thrive on the same resources. Balanced nutrition with proper mineral has always been the driving link to animal welfare and health, we take that part seriously every step of the way.

**Bull Development** - Bull calves are weaned and transitioned slowly from pasture and mama to high fiber TMR rations, that are balanced for micro and macro nutrients. Rations are formulated to maintain modest growth, but focused on superior rumen health, structure and reproductive health! All long yearling bulls go to summer grass to develop and mature, graze late into the fall, they are fit, in shape and ready to work!

## Quality Assurance & Definitions

- DNA Verified and lifetime production records
- Complete herd health standards
- Homo Polled & Coat Color tracking
- Extensive AI & ET Programs
- Sale bulls backed by Industry leading genetics from today's top Sires and Dams
- Large groups of brothers for improved consistency



= Heifers recommended.

## RETAINED OWNERSHIP DETAILS

**RETAINING 1/2 SEMEN INTEREST** - this enables the breeder(seller) to collect semen on the bull at their cost and buyers convenience. Also buyer and seller would be partners in any future semen sales. This is a great way to walk and use some of the top bulls produced and also be able to generate value back in semen sales on certain individuals.

**RETAINING 1/2 POSSESSION** - this enables the breeder(seller) to use the bull in a natural breeding service capacity. This is common when there is different calving seasons or a back and forth rotation. Please make contact with seller regarding individual requirements for 1/2 possession bulls. Lots of industry's best bulls successfully breed cows at multiple locations for different calving seasons.

## Understanding EPD's for added Profitability!

Cattle producers have quickly adopted advanced technology to add profit to their operations. All of the registered sale lots will have full sets of EPD's including genomically enhanced, multi generation to increase accuracy. All of the breeders(sellers) are more than willing to help guide you with the trait and EPD profiles to maximize your operations goals. They are a great tool but remember only one part of the whole equation.

*"using only epds is the equivalent to judging a bull by braille"*







Rocky Top Gelbvieh is owned and operated by Cody, Melissa & Layna Congdon. Our operation all began in 2005 with the first purchase of heifer calf Twin Star Rosebud 924R from the Twin Star Cattle Company dispersal sale. To this day, we still have females with the Rosebud lineage along with many of the first main group of females we purchased to grow the herd to where it is today. Here at Rocky Top, we've always strived to meet and exceed customers requirements for genetic advancement in our ever-changing and demanding industry though ensuring we're sourcing the latest bull genetics both through artificial insemination as well as walking bulls. We have also started more work with embryo transfers to further broaden our spectrum in the geneticpool. Melissa and myself would like to thank our buyers and bidders as we know without a strong customer foundation, we could not make this all possible. We look forward to seeing you at our open house and on sale day!

Stonegate Farm is owned by the Hickman Family and has been raising Gelbvieh cattle for 22 years. Darrell, Leila and the kids live East of Sundre and operate a small purebred herd of Gelbvieh and Balancer cattle, with many originating from some of the original cow families imported by Leila's dad to Canada in the early 1970's. We utilize several donors and dominate cow families to produce performance orientated cattle that will help to ensure profitability to the commercial sector. Please feel free to stop by anytime to see the cattle and have a visit, we are always happy to get to know the people behind your operation!



4DJ Farms Ltd. bought their first cow in 1980 and have focused on functional, productive beef animals. Throughout all the years the numbers have changed, trends have changed, but the functional, productive cattle have always been profitable. Strong maternal genetics that will work in any program.



Harvey and Joy Hollman are proud to work with their son, family & friends to host a bull sale that we're all proud of. Looking forward to seeing you at the open house, sale day and beyond.

Rodney & Tanya Hollman along with our boys, Wacey, Keston & Chayse, own & operate Royal Western Gelbvieh & Real World Genetics.

Started raising seedstock gelbvieh cattle in 1998 and have slowly expanded the breeding program to utilize Balancer, Angus & Simmental genetics. We run approx 250 breeding females both seed stock and commercial. We market and sell genetics globally, use extensive ET & AI programs combined with elite sires to push our breeding program forward.





## RWG Horse Power H311

RWG H311 - 03/31/2020 - CDGV173258 - Polled - PB94 - Black

CED	BW	WW	YW	Milk	TM	CEM	STAY	DOC
9	3.0	87	140	26	69	8	13	12

Act. BW **93**

Adj. WW **848**

Adj. YW **1458**

SIRE **SLC OUTBACK 142X**  
 CES DECKA OUTBACK 75S  
 SFL SLC SUE 325P

CES DECKA PRECISION 144P  
 CES DECKA HARPER 150L  
 SLC RIP 121K  
 SFL SCOTSWOOD SUE 214G

DAM **RWG ALLSTAR D510**  
 RWG WAR ADMIRAL 2528  
 PHG ALLSTAR A71

LCR WARNOCK 612W  
 RWG SEXY-KITTY 6034  
 RWG WHY ME 9515  
 VVGR MISS 089X

YG	CW	REA	MARB	FAT
-0.04	56	0.73	0.09	0.00



## JRI Wheres The Beef 307H40

JRI 307H40 - 08/11/2020 - AMGV1497141 - Polled - PC88 - Red

CED	BW	WW	YW	Milk	TM	CEM	STAY	DOC
11	1.6	84	130	26	68	1	7	15

Act. BW **89**

Adj. WW **812**

Adj. YW **1287**

SIRE **JRI GENERAL PATTON 213B97 ET**  
 JRI POP A TOP 197T83  
 JRI MS EXTRAVAGANT 213T87

JRI TOP SECRET 253M75 ET  
 JRI MS RED DAWN 197R72  
 JRI EXTRA EXPOSURE 285L71 ET  
 JRI MS PENNY ANTE 213R77

DAM **JRI MS ONE DERFUL 307D30**  
 JRI OPTIMIZER 148A24  
 JRI MS RUBY 307Y40

SITZ DASH 10277  
 JRI MS BELLA 148Y44  
 JRI TOP RECRUIT 254U82  
 JRI MS HONEYSUCKLE 307U30

YG	CW	REA	MARB	FAT
-0.16	47	0.66	-0.10	0.04



## BLB GOODVIEW Jetson 124J

BLB 124J - 01/29/2021 - CDGV176400 - Homo Polled - PB94 - Red

CED	BW	WW	YW	Milk	TM	CEM	STAY	DOC
2	4.7	68	102	19	53	-2	16	7

Act. BW **98**

Adj. WW **791**

Adj. YW **1303**

SIRE **SLC OUTBACK 142X**  
 CES DECKA OUTBACK 75S  
 SFL SLC SUE 325P

CES DECKA PRECISION 144P  
 CES DECKA HARPER 150L  
 SLC RIP 121K  
 SFL SCOTSWOOD SUE 214G

DAM **DDN BELLY RIVER FANCY 8138F**  
 DDN DRIVER 133D  
 DDN 36D

JRI PETERBILT 282B31 ET  
 DDN 16A  
 BEA 442B ET  
 DN BELLY RIVER XTYRIN 27X

YG	CW	REA	MARB	FAT
-0.09	28	0.41	0.16	-0.01





## 4DJ *Just A Dance* 101J

HDKJ 101J - 06/04/2021 - 224571I - Angus - Black

CED	BW	WW	YW	Milk	TM	CEM	STAY	DOC
10	-0.3	48	103	25		10		13

Act. BW **94**

Adj. WW **692**

Adj. YW **1257**

SIRE **S A V RAINDANCE 6848**  
COLEMAN CHARLO 0256  
S A V BLACKCAP MAY 4136

O C C PAXTON 730P  
BOHI ABIGALE 6014  
S A V 8180 TRAVELER 004  
S A V MAY 2397

DAM **U-2 ERELITE 1X**  
S A V FINAL ANSWER 0035  
U-2 ERELITE 8109U

SITZ TRAVELER 8180  
S A V EMULOUS 8145  
S A V NET WORTH 4200  
MWC ERELITE 79K

YG	CW	REA	MARB	FAT
	34	0.61	0.13	0.022



## RWG *Grand Plan* G420 ET

RWG G420 - 04/06/2019 - CDGVI7035I - Polled - PB94 - Black

CED	BW	WW	YW	Milk	TM	CEM	STAY	DOC
16	-1.8	71	101	27	62	10	14	10

Act. BW **83**

Adj. WW **871**

Adj. YW **1301**

SIRE **RWG EXACT COMBINATION E409**  
RWG RIGHT COMBINATION C506  
RWG HADIE 3505

RWG WAR ADMIRAL 2528  
SLC LORA 164Y  
RWG XTREME TRACTION 052I  
RWG YES HADIE 1508

DAM **RWG KITTY'S DREAM D526**  
BEAS 2806Z  
RWG ROXY KITTY X 030I

MCFG 94X  
BEAS 7084T  
RWG TOTALLY-EXPOSED 7918 ET  
RWG ROXY KITTY 5030

YG	CW	REA	MARB	FAT
-0.03	40	0.60	0.12	0.01



## DRT LONESOME *Cairo* 230H

DRT 230H - 02/18/2020 - CDGVI72782 - Homo Polled - PB94 - Black

CED	BW	WW	YW	Milk	TM	CEM	STAY	DOC
20	-2.5	41	44	21	41	10	22	9

Act. BW **78**

Adj. WW **720**

Adj. YW **1241**

SIRE **DVE DAVIDSON MACON 111C**  
PHG BLACK MAC Z13  
DVE DAVIDSON MS NAVAHO 56A

COLB MR XAVIER X812  
PHG BLACK BEAUTY X90  
DDGR NAVAHO 188X  
DVE DAVIDSON MS B 107T

DAM **DRT LONESOME DANIELLE 150F**  
DVE DAVIDSON SAM 16D  
DRT LONESOME GOOD TIME GIRL

DVE DAVIDSON U-BETCHA 174A  
DVE DAVIDSON MS DANDY 79Z  
DRT LONESOME HALL OF FAME 38X  
FRL FIR RIVER STACEY 237X

YG	CW	REA	MARB	FAT
-0.27	-5	0.44	0.21	-0.03





## RWG *Just To Cool* J416 ET

RWG J416 - 04/09/2021 - CDGV177270 - Homo Polled - PB94 - Red

CED	BW	WW	YW	Milk	TM	CEM	STAY	DOC
6	1.4	69	96	26	60	-2	14	15

Act. BW **97**

Adj. WW **918**

Adj. YW **1422**

SIRE HL SLC MASTERPLAN 58C  
SLC MASTERPLAN IIIY  
HL MISS RAYNA IIIIT

DAM VV ZAKE 114Z  
SLC PARKLAND 31E ET  
SLC PARKLAND 220U

SLC MASTER PLAN 191U  
SLC SMOKE 20U  
ARN SIR ARNOLD K114  
TSCC TWIN STAR RAYNA 313R

FRL FIR RIVER RANALDO 38U  
SLC DEBBIE 209S  
SLC MERV 12N  
SLC COPPER PARKLAND 139G

YG	CW	REA	MARB	FAT
-0.14	37	0.70	0.21	-0.01



## COLEMAN *Bravo* 6313

IMP 6313D - 04/07/2016 - 2065368 - Angus - Black

CED	BW	WW	YW	Milk	TM	CEM	STAY	DOC
14	-0.1	53	98	23		11		32

Act. BW **77**

Adj. WW **616**

Adj. YW

SIRE O C C PAXTON 730P  
COLEMAN CHARLO 0256  
BOHI ABIGALE 6014

DAM CONNEALY ONWARD  
COLEMAN DONNA 714  
COLEMAN DONNA 386

O C C FOCUS 813F  
O C C BLACKBIRD 736K  
SITZ TRAVELER 8180  
S A V ABIGALE 6062

CONNEALY LEAD ON  
ALTUNE OF CONANGA 6104  
BASIN RAINMAKER 654X  
KMK DONNA J311

YG	CW	REA	MARB	FAT
	41	0.37	0.11	0.045



## JRI *Alan* 6863

JRI 68G3 - 01/19/2019 - AMGV1447758 - Polled - BA75 - Black

CED	BW	WW	YW	Milk	TM	CEM	STAY	DOC
13	1.3	81	123	24	64	7	9	15

Act. BW **82**

Adj. WW **836**

Adj. YW **1382**

SIRE JRI POP A TOP 197T83  
JRI GENERAL PATTON 213B97 ET  
JRI MS EXTRAVAGANT 213T87

DAM ASIN PAYWEIGHT 1682  
JRI MS MY PAYDAY 68E2  
JRI MCCLINTOCK 68Y8

JRI TOP SECRET 253M75 ET  
JRI MS RED DAWN 197R72  
JRI EXTRA EXPOSURE 285L71 ET  
JRI MS PENNY ANTE 213R77

AAA BASIN PAYWEIGHT 006S  
21AR O LASS 7017  
RID R COLLATERAL 2R  
JRI MS SUGAR PIE 68M7

YG	CW	REA	MARB	FAT
-0.09	38	0.49	0.28	-0.02



# Rocky Top Gelboick



LOT 1



DAM

## RTG *Magnum* M128

RTG M128 - 01/13/2024 - CDGV188189 - Homo Polled - PB88 - Red

CED	BW	WW	YW	Milk	TM	CEM	STAY	DOC
15	1.2	84	120	28	70	5	11	xx

SIRE JRI GENERAL PATTON 213B97 ET  
**JRI WHERE'S THE BEEF 307H40**  
 JRI MS ONE DERFUL 307D30

DAM RTG DOCTOR WHO  
 RTG EASY TO PLEASE

JRI POP A TOP 197T83  
 JRI MS EXTRAVAGANT 213T87  
 JRI OPTIMIZER 148A24  
 JRI MS RUBY 307Y40

RWG XTREME TRACTION 0521  
 RWG WOODLAND 9143  
 KGJ HIGHLINE DRACULA 100A  
 RTG ROCKY TOP MISS U217

Act. BW **86**

Adj. WW **769**

Adj. YW **1247**

YG	CW	REA	MARB	FAT
-0.12	52	0.72	-0.08	-0.03

Is as attractive as they come! Magnum is very deep in his chest giving him the natural herd bull look to him. From top to bottom, he flows with tons of muscle expression. His long spine patterns well into his full rib shape and depth of body. Magnum moves out extremely well with a sound foot and correct flexibility. His dam RTG Glitz, is a sought-after female in our program due to her clean lines, notable udder with desired teat size and placement all set atop of a clean foot. Magnum has the ability to work on a wide selection of females with a superior set of calving ease numbers - he would be especially good in a commercial program looking to utilize hybrid vigor.



# Rocky Top Gelbvieh



## RTG Major M101

RTG M101 - 01/03/2024 - CDGV188155 - Homo Polled - PB94 - Red

CED	BW	WW	YW	Milk	TM	CEM	STAY	DOC
15	0.1	72	111	21	57	5	14	14

Act. BW 81

Adj. WW 639

Adj. YW 1097

SIRE **JRI WHERE'S THE BEEF 307H40**  
 JRI GENERAL PATTON 213B97 ET  
 JRI MS ONE DERFUL 307D30

JRI POP A TOP 197T83  
 JRI MS EXTRAVAGANT 213T87  
 JRI OPTIMIZER 148A24  
 JRI MS RUBY 307Y40

DAM **RTG FRIDAY NIGHTS**  
 DDGR DDGR RESILIENT 275D  
 RTG MISS LILA Y222

CCRO CAROLINA LEVERAGE 3214A  
 DDGR 129Z  
 RWG TOTALLY-EXPOSED 7918 ET  
 RTG ROCA 103W



SIRE

YG	CW	REA	MARB	FAT
-0.15	39	0.70	-0.02	-0.02

This nice clean skulled bull that really gets out and moves. Although he's more on the moderate side of things, he still fits well into his frame size with a solid middle rib shape. Major is a maternally driven bull backed by our notable Rosebud cow family who was the foundational female where the Rocky Top program all started. Even with the calving ease numbers Major carries, we can still expect performance in his future offspring with having Resilient in his pedigree who was just a natural raw power bull. Overall, Major is an exceptional moderate bull who will sire quality performance into a program with the ability to make great females for the replacement pen.



## RTG More Resources M102

RTG M102 - 01/04/2024 - CDGV188444 - Polled - BA50 - Black

CED	BW	WW	YW	Milk	TM	CEM	STAY	DOC
9	1.3	61	92	18	50	4	14	14

Act. BW 77

Adj. WW 616

Adj. YW 1003

SIRE **HALF DIAMOND HORIZON 101H**  
 SAV RESOURCE 1441Y  
 4DJ SENSATIONAL BLACKBIRD 45S

RITO 707 OF IDEAL 3407 7075  
 S A V BLACKCAP MAY 4136  
 HYLINE RIGHT WAY 781  
 LLB BLACKBIRD 173L

DAM **RTG CERVEZA**  
 RPS APOLLO 75A  
 RWG WISH 9124

VV YOUNG BLOOD 22Y  
 ZTM MCCOY 83U ESTER 25X  
 RWG ROYAL RESERVE 5066  
 VG VALLEY MISS BB 17S



GRAND SIRE

YG	CW	REA	MARB	FAT
-0.05	32	0.45	0.25	0.00

Right from the start More Resource has been a standout bull to the general eye. He carries such a clean, sharp front end that really carries into the front third with an exceptional middle rib shape and lots of length of spine. More Resource really is a tremendous balancer bull that can boost the hybrid vigor for a program. His dam, RTG Cerveza C375 is backed by an excellent pedigree. Cerveza C375 has always put a replacement back into our program or a bull into the sale. This appealing bull with maternal traits standing behind him will really have you looking for More Resource!





## RTG Macon M103

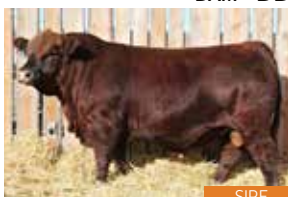
RTG M103 - 01/04/2024 - CDGV188156 - Homo Polled - PB94 - Hetro Black

CED	BW	WW	YW	Milk	TM	CEM	STAY	DOC
11	0.3	75	105	24	61	2	13	13

Act. BW **76**

Adj. WW **724**

Adj. YW **1202**



SIRE

SIRE **RWG JUST TO COOL J416 ET**  
HL SLC MASTERPLAN 58C  
SLC SLC PARKLAND 31E ET

DAM **DDN 04H**  
DDN DRIVER 133D  
DDN 88B

SLC MASTERPLAN 111Y  
HL MISS RAYNA 111T  
VV ZAKE 114Z  
SLC PARKLAND 220U

JRI PETERBILT 282B31 ET  
DDN 16A  
STON XPLOSIVE 5X  
DDN BELLY RIVER X-GIRL 103X

YG	CW	REA	MARB	FAT
-0.16	52	0.80	0.34	-0.03

A contemporary, big-topped bull that was our 5th highest in weaning weight this year. This good-looking homo-polled Just Too Cool son really carries the added size and length. His sire, Just Too Cool was one that just flat out poured the performance and quality into his calves. His dam, DDN 04H who is a Driver daughter that we purchased out of the Gathering Sale from Nelson Gelbvieh has been a well fitted female in our program and raised last year's high selling bull RTG Longview who now resides at Riverside Ranch in Tennessee. Macon will certainly be one to keep an eye on come sale day!



## RTG Macro M105

RTG M105 - 01/05/2024 - CDGV188158 - Polled - PB94 - Hetro Black

CED	BW	WW	YW	Milk	TM	CEM	STAY	DOC
12	1.7	65	95	26	58	4	15	10

Act. BW **86**

Adj. WW **673**

Adj. YW **1105**

SIRE **JRI WHERE'S THE BEEF 307H40**  
JRI GENERAL PATTON 213B97 ET  
JRI MS ONE DERFUL 307D30

DAM **RTG MISS**  
DDN 129B  
VG VALLEY MISS BJ 32S

JRI POP A TOP 197T83  
JRI MS EXTRAVAGANT 213T87  
JRI OPTIMIZER 148A24  
JRI MS RUBY 307Y40

STON XPLOSIVE 5X  
DDN BELLY RIVER WINDY 924W  
VG VALLEY BLACKJACK JR 37H  
VG VALLEY PLD VIOLA 63K

YG	CW	REA	MARB	FAT
-0.18	39	0.63	0.01	-0.04

Holy Macro, do we have a bull here! This stout hipped, big bodied full of capacity bull has so much to offer. Being out of a third calver, his dam RTG Miss H218 is no stranger to weaning good ones to the bullpen - RTG Macro is well backed by young, productive genetics. Macro is simply put as the commercial cattlemen's kind that will create pounds for the steer pen or improve quality in the replacement pen.





# Rocky Top Gelboick



## RTG Momentum M106

RTG M106 - 01/06/2024 - CDGV188159 - Homo Polled - PC75 - Red

CED	BW	WW	YW	Milk	TM	CEM	STAY	DOC
13	-0.3	75	107	18	55	4	11	16

Act. BW 79

Adj. WW 635

Adj. YW 1008

SIRE **JRI WHERE'S THE BEEF 307H40**  
 JRI GENERAL PATTON 213B97 ET  
 JRI MS ONE DERFUL 307D30

DAM **RTG ROCA H106**  
 RWG EXACT COMBINATION E409  
 RTG B208

JRI POP A TOP 197T83  
 JRI MS EXTRAVAGANT 213T87  
 JRI OPTIMIZER 148A24  
 JRI MS RUBY 307Y40

RWG RIGHT COMBINATION C506  
 RWG HADIE 3505

RTG WHISTLIN' DIXIE



DAM

YG	CW	REA	MARB	FAT
-0.17	36	0.48	-0.06	-0.05

RTG Momentum has a notable refined head that leads into such a smooth front third. He really carries himself well with the depth of body that will surely add to your bottom dollar by making some long-lasting, sound females and fast-growing steers. RTG H106 is a very complete deep bodied female that goes back to the Exact Combination bull on the top side and the everlasting genetic traits of our Rosebud cow family on the bottom side. Both of which have been such tried-and-true lines, making Momentum a very promising herd sire to be.



## RTG Mr. T M107

RTG M107 - 01/07/2024 - CDGV188160 - Homo Polled - PB94 - Red

CED	BW	WW	YW	Milk	TM	CEM	STAY	DOC
9	2.0	70	99	25	60	1	12	14

Act. BW 95

Adj. WW 716

Adj. YW 1152

SIRE **JRI WHERE'S THE BEEF 307H40**  
 JRI GENERAL PATTON 213B97 ET  
 JRI MS ONE DERFUL 307D30

DAM **RTG GIRL CRUSH**  
 RPS APOLLO 75A  
 VG VALLEY MISS BJ 325

JRI POP A TOP 197T83  
 JRI MS EXTRAVAGANT 213T87  
 JRI OPTIMIZER 148A24  
 JRI MS RUBY 307Y40

VV YOUNG BLOOD 22Y  
 ZTM MCCOY 83U ESTER 25X  
 VG VALLEY BLACKJACK JR 37H  
 VG VALLEY PLD VIOLA 63K



LOT 7

YG	CW	REA	MARB	FAT
-0.14	38	0.59	0.09	-0.03

This Where's The Beef son is a dark red, homo polled, solid built bull that really has a ton of capacity to offer. We really appreciate this bull for the ruggedness about him as he is masculine made and the big depth of rib and overall capacity, notable testicular development and a good sound foot. The performance drive and structural soundness he packs can't go unnoticed. If you're in the market for a laid-back bull that maintains the phenotype and growth, here's your guy to add to your bottom line!



# Rocky Top Gelboick



LOT 8



DAM

## RTG *Maximizer* M256 ET

RTG M256 - 02/06/2024 - CDGV187739 - Homo Polled - PB94 - Red

CED	BW	WW	YW	Milk	TM	CEM	STAY	DOC
12	-2.3	59	82	25	54	7	20	11

SIRE RWG EXACT COMBINATION E409  
**RWG GRAND PLAN G420 ET**  
 RWG KITTY'S DREAM D526

DAM VV ZAKE I14Z  
**SLC SLC PARKLAND 31E ET**  
 SLC PARKLAND 220U

RWG RIGHT COMBINATION C506  
 RWG HADIE 3505  
 BEAS BEAS 2806Z  
 RWG ROXY KITTY X 0301

FRL FIR RIVER RANALDO 38U  
 SLC DEBBIE 209S  
 SLC MERV 12N  
 SLC COPPER PARKLAND 139G

Act. BW **78**

Adj. WW **715**

Adj. YW **1124**

YG	CW	REA	MARB	FAT
-0.05	22	0.38	0.29	0.01

RTG Maximizer is an impressive dark red Grand Plan son out of SLC Parkland 31E embryos that were purchased out of the New Years Resolution Sale last year. This bull is packed with lots of hair, a balanced build and an eye-catching appearance. Maximizer has a clean neck extension flowing into his shoulders with a smooth chest. When you get above this bull, he is very broad and square in his hip design. This bull is best suited for a group of cows with his very pleasing calve ease data and a -2.3BW score will help reduce birthweights without dampening growth and performance. He will certainly sire quality replacement females for you to retain within your herd.







## RTG Merchant M108

RTG M108 - 01/07/2024 - CDGV188161 - Homo Polled - PB94 - Hetro Black

CED	BW	WW	YW	Milk	TM	CEM	STAY	DOC
10	2.5	78	113	28	67	4	13	14

Act. BW 89

Adj. WW 720

Adj. YW 1160

SIRE **JRI WHERE'S THE BEEF 307H40**  
 JRI GENERAL PATTON 213B97 ET  
 JRI MS ONE DERFUL 307D30

DAM **RTG FOLLOW ME**  
 DDGR DDGR RESILIENT 275D  
 RWG DAISY 9142  
 JRI POP A TOP 197T83  
 JRI MS EXTRAVAGANT 213T87  
 JRI OPTIMIZER 148A24  
 JRI MS RUBY 307Y40  
 CCRO CAROLINA LEVERAGE 3214A  
 DDGR 129Z  
 EGL PABST L011 ET  
 VG VALLEY MISS 52R

YG	CW	REA	MARB	FAT
-0.23	46	0.67	-0.03	-0.07

These Where's The Beef sons just keep making waves in this bull pen this year! When growth, power and performance pay more in our industry than they ever have before, now is the time to capitalize on those genetics that encompass all three of those traits. RTG Merchant is attractive in his bold build and overall design. Long sided, big topped and stout. He's also backed by a maternally driven pedigree of the Daisy cow family who has over the years proven to be profitable in terms of production longevity and has always given us either a replacement for the heifer pen or a bull into the sale pen. Merchant has an exceptional pedigree with productive and reliable genetics that will have positive genomic values to build upon!



## RTG Malone M114

RTG M114 - 01/07/2024 - CDGV188177 - Homo Polled - PB94 - Hetro Black

CED	BW	WW	YW	Milk	TM	CEM	STAY	DOC
9	2.2	76	111	25	63	4	18	8

Act. BW 81

Adj. WW 769

Adj. YW 1036

SIRE **DDN 1206j**  
 JRI STAR GENERAL 254F833 ET  
 DDN 863F

DAM **RTG DAISY 2210**  
 JRI GUNG HO 282C51  
 RTG DAISY H113  
 JRI SECRET INSTINCT 254U83  
 JRI MS POPPY LOVE 254Z72  
 DVE DAVIDSON MCGRAW 165D  
 DDN 134B  
 JRI HOSS 293A43 ET  
 JRI MS FRANKIE 282R11  
 RWG EXACT COMBINATION E409  
 RWG DAISY 9142



SIRE

YG	CW	REA	MARB	FAT
-0.22	28	0.67	0.13	-0.03

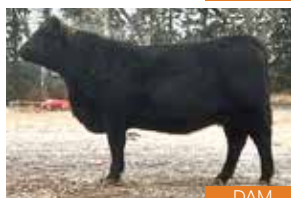
RTG Malone offers moderation in his frame size and style but doesn't fall short when it comes to added depth of body and his volume of hair. If your herd is struggling with tubular shaped cattle – Malone would be an ideal mating to capitalize on for such cows as he's a shorter spined bull. RTG Malone certainly doesn't fall short when it comes to flexibility in his movement and he also maintains himself well when it comes to EPD numbers and carcass quality. He falls into the top 10% WW, 30% CREA. Again, another bull that goes back to the sought after Daisy cow family that really stands out in our herd – there is quality built into this bull top and bottom pedigree!



# Rocky Top Gelboick



SIRE



DAM

## RTG Mojo M111

RTG M111 - 01/08/2024 - CDGV188246 - Homo Polled - PB94 - Hetro Black

CED	BW	WW	YW	Milk	TM	CEM	STAY	DOC
12	2.8	74	104	24	61	6	16	10

SIRE **DDN 1206J**  
JRI STAR GENERAL 254F833 ET  
DDN 863F

DAM **RTG AMY 2108**  
RWG GUT FEELING G429  
RTG AMY A587

JRI SECRET INSTINCT 254U83  
JRI MS POPPY LOVE 254Z72  
DVE DAVIDSON MCGRAW 165D  
DDN 134B

RWG EXACT COMBINATION E409  
RWG ROXY KITTY X 0301  
LCR WARNOCK 612W  
VG VALLEY MISS BJ 32S

Act. BW **92**

Adj. WW **745**

Adj. YW **1223**

YG	CW	REA	MARB	FAT
-0.16	41	0.60	0.14	-0.04

RTG Mojo is a sound made, smooth long bodied bull that sits atop a big strong foot structure. Much like his dam RTG Amy – who has done a phenomenal job for her first calf at side, were considering big things for her down the road as she matures and develops in her phenotype, she may just make it into the donor pen yet! RTG Amy really does tick all the boxes when it comes to what were looking for in a female. Mojo has quality bred into him that will maximize performance with layers of maternal value as he ranks in the top 25% for milk and top 10% for total maternal ability.



Lot 12

## RTG Merchant M116

RTG M116 - 01/07/2024 - CDGVI88179 - Polled - PB94 - Hetro Black

CED	BW	WW	YW	Milk	TM	CEM	STAY	DOC
12	0.7	65	93	22	55	4	9	14

Act. BW 92

Adj. WW 621

Adj. YW 1132

SIRE **JRI WHERES THE BEEF 307H40**  
 JRI GENERAL PATTON 213B97 ET  
 JRI MS ONE DERFUL 307D30

JRI POP A TOP 197T83  
 JRI MS EXTRAVAGANT 213T87  
 JRI OPTIMIZER 148A24  
 JRI MS RUBY 307Y40

DAM **RTG GRACE**  
 RTG DOMINION  
 RWG WOODLAND 9143

DDN 129B  
 RTG ALIDA A332  
 EGL PABST L011 ET  
 VG VALLEY MISS 52P

YG	CW	REA	MARB	FAT
-0.25	34	0.88	0.17	-0.03

If you're looking for an added punch of bull – take a look at this big rugged made sucker that will be sure to build up cow programs and set some steers in the marketplace! RTG Merchant is really good in his spine, masculine and is easy fleshing! A bull that you truly have to admire for his performance and sound structure – has cow power written all over him!



Lot 14

## RTG Marx's M118

RTG M118 - 01/07/2024 - CDGVI88180 - Homo Polled - PB94 - Red

CED	BW	WW	YW	Milk	TM	CEM	STAY	DOC
14	1.0	69	97	21	55	7	20	13

Act. BW 75

Adj. WW 717

Adj. YW 1167

SIRE **DDN 1206j**  
 JRI STAR GENERAL 254F833 ET  
 DDN 863F

JRI SECRET INSTINCT 254U83  
 JRI MS POPPY LOVE 254Z72  
 DVE DAVIDSON MCGRAW 165D  
 DDN 134B

DAM **RTG HARD CRUSH 21I3**  
 JRI HALLELUJAH 246E50

JRI SECRET POWERS 254C821  
 JRI MS HONEY 246Z10  
 DDGR DDGR RESILIENT 275D  
 RTG GIRL CRUSH

YG	CW	REA	MARB	FAT
-0.22	30	0.55	0.14	-0.06

The DDN 1206j calves have all been rather refined in their design and bone structure making them an easy choice when it comes to calving ease on first calvers. RTG Marx is moderate in his build and smooth through his shoulder and paired with his low-birth-weight number easily makes him heifer approved. Backed by an excellent, hardworking Hallelujah daughter who adds value and growth to her calves. This long-bodied bull still carries the potential to set growth and development to add to any program.







## RTG Mandate M124

RTG M124 - 01/10/2024 - CDGVI88186 - Homo Polled - PB94 - Red

CED	BW	WW	YW	Milk	TM	CEM	STAY	DOC
6	3.8	93	140	28	74	1	11	14

Act. BW **79**

Adj. WW **623**

Adj. YW **1144**



DAM

**SIRE** JRI GENERAL PATTON 213B97 ET  
**JRI WHERE'S THE BEEF 307H40**

JRI MS ONE DERFUL 307D30

**DAM** RWG EASY MONEY E305 ET

**RTG HAVEN**

RTG FINE N' DANDY

JRI POP A TOP197T83  
 JRI MS EXTRAVAGANT 213T87  
 JRI OPTIMIZER 148A24  
 JRI MS RUBY 307Y40

DCSF POST ROCK ASTRONAUT I57A  
 SLC LORA 164Y  
 DDGR DDGR RESILIENT 275D  
 RWG CHERRY 9148

YG	CW	REA	MARB	FAT
-0.27	51	0.99	-0.04	-0.05

Although he may not be the biggest bull in the pen, he still brings a lot to the table when looking for a balanced sound structure and clean topped bull. This Where's The Beef son will have ample ability to throw pounds into the cow herd in a moderate way. His dam RTG Haven 0223 is of the many females here that we truly appreciate the job she does – she puts all her efforts into her calves. The Haven cow has landed some great progeny into our program!





# Rocky Top Gelbvieh



LOT 16



SIRE

## RTG Mo-Co M125

RTG M125 - 01/12/2024 - CDGV188187 - Homo Polled - PB94 - Red

CED	BW	WW	YW	Milk	TM	CEM	STAY	DOC
10	1.8	77	107	26	64	3	11	13

SIRE JRI GENERAL PATTON 213B97 ET  
**JRI WHERE'S THE BEEF 307H40**  
 JRI MS ONE DERFUL 307D30

DAM RWG EXACT COMBINATION E409  
**RTG DAISY H13**  
 RWG DAISY 9142

JRI POP A TOP 197T83  
 JRI MS EXTRAVAGANT 213T87  
 JRI OPTIMIZER 148A24  
 JRI MS RUBY 307Y40

RWG RIGHT COMBINATION C506  
 RWG HADIE 3505  
 EGL PABST L011 ET  
 VG VALLEY MISS 52R

Act. BW **83**

Adj. WW **749**

Adj. YW **1135**

YG	CW	REA	MARB	FAT
-0.30	45	0.88	-0.07	-0.07



Holy moly is there ever growth and performance written all over this guy! Tremendous big frame, loads of body depth and such a solid foot and foundation. Another bull that is backed by the Daisy cow family who we truly can't get enough of as they bring such udder quality, correctness of foot, longevity and productivity just to name a few key features we focus on in our program! RTG MoCo is a great choice to add in the substance and pounds without giving up on maternal drive. RTG MoCo sits in the top 10% for weaning weight and milk and in the top 5% for total maternal traits – a standout for sure across the board!





## RTG Merky Waters M131

RTG M131 - 01/15/2024 - CDGVI88192 - Homo Polled - PB94 - Red

CED	BW	WW	YW	Milk	TM	CEM	STAY	DOC
6	1.9	80	110	14	54	1	16	11

Act. BW **94**

Adj. WW **716**

Adj. YW **1183**

SIRE DDN 41D  
**RTG ROAD HAMMER**  
DDN 731E

DAM JRI HALLELUJAH 246E50  
**RTG ALI A J201**  
RTG ALI A347

BEA 442B ET  
JAB ALEXANDRA 3315  
RWG ALI 3539  
DDN 38A

JRI SECRET POWERS 254C821  
JRI MS HONEY 246Z10  
DSP SPECIAL RESERVE 3X  
RWG KOKANEE 9138

YG	CW	REA	MARB	FAT
-0.16	33	0.54	0.22	-0.03

The paternal lines in this bull stem back to solid performance that add bone and muscle mass, and Merky Waters is just that. He's a real neat functional bull that carries himself in rib dimension and flows into his rear quarter. His dam is a maternally functional dam from our Kokanee cow family that is smooth in her lines with a notable spring of rib and correct udder development. She's a female that has proven to generate value within our program – just as RTG Merky Waters can do for yours!



## RTG Munktun M136

RTG M136 - 01/17/2024 - CDGVI88197 - Homo Polled - PB88 - Red

CED	BW	WW	YW	Milk	TM	CEM	STAY	DOC
8	0.8	70	96	18	53	1	12	11

Act. BW **87**

Adj. WW **685**

Adj. YW **1189**

SIRE DDN 41D  
**RTG ROAD HAMMER**  
DDN 731E

DAM JRI SECRETARIAT 285E78  
**RTG JITTER J124**  
RTG B208

BEA 442B ET  
JAB ALEXANDRA 3315  
RWG ALI 3539  
DDN 38A

JRI SECRET SENSATION I40A43  
JRI MS PRIME STAR 285Z68

RTG WHISTLIN' DIXIE

YG	CW	REA	MARB	FAT
-0.21	24	0.41	0.27	-0.06

This Road Hammer H501 son really has grown into himself since the beginning. We feel that he will only continue to do so as he matures and develops further. Along with his notable growth performance, he continues to be sound made and correct in his structure from pin to point. Munktun was another calf that hit the ground running out of a really good young cow RTG Jitter J124 that is quickly earning her keep when she brings such solid calves to life!







Lot 19

## RTG Mulligan M143

RTG M143 - 01/24/2024 - CDGV188202 - Homo Polled - PC75 - Red

CED	BW	WW	YW	Milk	TM	CEM	STAY	DOC
8	2.7	82	123	22	63	2	15	14

Act. BW 87

Adj. WW 652

Adj. YW 1140

SIRE **JRI WHERE'S THE BEEF 307H40**  
 JRI GENERAL PATTON 213B97 ET  
 JRI MS ONE DERFUL 307D30

JRI POP A TOP 197T83  
 JRI MS EXTRAVAGANT 213T87  
 JRI OPTIMIZER 148A24  
 JRI MS RUBY 307Y40

DAM **RTG GOUCHY**  
 RTG DOMINION  
 RTG A356

DDN 129B  
 RTG ALIDA A332  
 RWG ROYAL RESERVE 5066  
 4DJ SENSATIONAL BLACKBIRD 455



GRAND DAM

YG	CW	REA	MARB	FAT
-0.17	43	0.69	0.11	-0.04

We are very happy with how our Where's The Beef calves turned out and Mulligan is a great exhibit of just how his sire stamps his offspring – good footed, smooth traveling, docile and easy keeping. This growthy bull has the length with style added on top!



Lot 20

## RTG Multiplier M144

RTG M144 - 01/26/2024 - CDGV188203 - Homo Polled - PB88 - Red

CED	BW	WW	YW	Milk	TM	CEM	STAY	DOC
9	2.4	80	125	23	63	1	15	14

Act. BW 90

Adj. WW 658

Adj. YW 1097

SIRE **JRI WHERE'S THE BEEF 307H40**  
 JRI GENERAL PATTON 213B97 ET  
 JRI MS ONE DERFUL 307D30

JRI POP A TOP 197T83  
 JRI MS EXTRAVAGANT 213T87  
 JRI OPTIMIZER 148A24  
 JRI MS RUBY 307Y40

DAM **RTG F315**  
 DDN 41D  
 RTG MISS DIXIE U

BEA 442B ET  
 JAB ALEXANDRA 3315  
 RWG XTREME TRACTION 0521  
 RTG ROCKY TOP MISS U217



GRAND DAM

YG	CW	REA	MARB	FAT
-0.05	48	0.54	0.05	-0.02

RTG Multiplier is a strong bull in his own class that really flows from his smooth skull design into his front profile with adequate body capacity and substance to him. His dam has been one of our best cows as she stems back to one of our foundational cow families – Rocky Top Miss U217. We have a fair number of daughters and granddaughters influenced by Miss U217 and they are some of our absolute best producers. In the 2024 Draft Picks sale, this bull's half-brother was our high seller to RPS Gelbvieh.





## RTG Moddus M253 ET

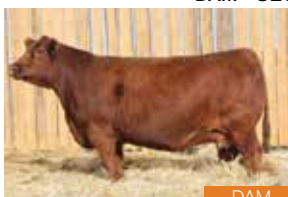
RTG M253 - 02/03/2024 - CDGV187740 - Homo Polled - PB94 - Red

CED	BW	WW	YW	Milk	TM	CEM	STAY	DOC
11	0.5	63	84	25	56	6	19	9

Act. BW **83**

Adj. WW **603**

Adj. YW **1079**



DAM

SIRE **RWG GRAND PLAN G420 ET**  
RWG EXACT COMBINATION E409  
RWG KITTY'S DREAM D526

DAM **SLC SLC PARKLAND 31E ET**  
VV ZAKE 114Z  
SLC PARKLAND 220U

RWG RIGHT COMBINATION C506  
RWG HADIE 3505  
BEAS BEAS 2806Z  
RWG ROXY KITTY X 0301

FRL FIR RIVER RANALDO 38U  
SLC DEBBIE 209S  
SLC MERV 12N  
SLC COPPER PARKLAND 139G

YG	CW	REA	MARB	FAT
0.01	29	0.23	0.23	0.00

This bull will be turning heads come sale day! RTG Moddus is a dark, dark red hided, smooth made bull with phenomenal neck extension. He's very consistent in his make up with a flush shoulder that connects into his middle rib and rounds out with an excellent hair coat. Just can't say enough about him! We purchased these embryo matings with the hopes to have the ability to continue down the road of genetic advancement and are we every happy with the turn out of this crossing.

Retaining 1/2 possession.



## RTG Milton M255

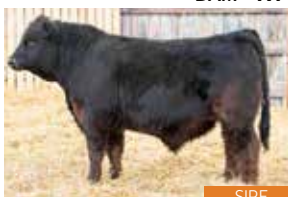
RTG M255 - 02/06/2024 - CDGV188212 - Homo Polled - PB94 - Hetro Black

CED	BW	WW	YW	Milk	TM	CEM	STAY	DOC
14	0.0	66	96	17	50	8	14	10

Act. BW **88**

Adj. WW **683**

Adj. YW **1117**



SIRE

SIRE **DDN 1206J**  
JRI STAR GENERAL 254F833 ET  
DDN 863F

DAM **RTG HOLLIE 2101**  
JRI HALLELUJAH 246E50  
RTG HOLLIE

JRI SECRET INSTINCT 254U83  
JRI MS POPPY LOVE 254Z72  
DVE DAVIDSON MCGRAW 165D  
DDN 134B

JRI SECRET POWERS 254C821  
JRI MS HONEY 246Z10  
JRI SECRETARIAT 285E78  
RTG B348

YG	CW	REA	MARB	FAT
-0.09	20	0.28	0.20	-0.02

RTG Milton is stamped heifer bull all thanks to his sire DDN 1206J who has made his offspring moderate and has enforced calving ease. His dam is a finessed female herself with volume and a beautiful udder design. This combination is one you're sure to be pleased with!







## RTG Midnight Hour M259

RTG M259 - 02/20/2024 - CDGV188213 - Homo Polled - PB94 - Red

CE	BW	WW	YW	Milk	TM	CEM	STAY	DOC
11	1.9	81	122	22	62	2	14	13

Act. BW 93

Adj. WW 746

Adj. YW 1210

SIRE **JRI WHERE'S THE BEEF 307H40**  
 JRI GENERAL PATTON 213B97 ET  
 JRI MS ONE DERFUL 307D30

JRI POP A TOP 197T83  
 JRI MS EXTRAVAGANT 213T87  
 JRI OPTIMIZER 148A24  
 JRI MS RUBY 307Y40

DAM **RTG HAZY**  
 DDN EXTRA CLASSY 760E  
 RTG CERVEZA

RWG ALI 3539  
 DDN BELLY RIVER YES MAN 178Y  
 RPS APOLLO 75A  
 RWG WISH 9124

YG	CW	REA	MARB	FAT
-0.23	28	0.60	0.03	-0.05

RTG Midnight Hour is one of the more fleshy, soggy made bulls in the pen that continues to be soft made and smooth jointed. He has a great combination of both growth and maternal traits. His dam RTG Hazy is a female that not only gets the job done, but does it well too! She's an excellent footed cow with great udder quality. This is a docile maternal package!



## RTG Mutton Buster M363

RTG M363 - 03/10/2024 - CDGV188217 - Homo Polled - PB94 - Homo Black

CE	BW	WW	YW	Milk	TM	CEM	STAY	DOC
11	1.2	66	94	24	57	5	16	10

Act. BW 83

Adj. WW 714

Adj. YW 1135

SIRE **DDN 1206j**  
 JRI STAR GENERAL 254F833 ET  
 DDN 863F

JRI SECRET INSTINCT 254U83  
 JRI MS POPPY LOVE 254Z72  
 DVE DAVIDSON MCGRAW 165D  
 DDN 134B

DAM **RTG FANDANGO 2214**  
 RWG GUT FEELING G429  
 DDN BELLY RIVER FANDANGO 877F

RWG EXACT COMBINATION E409  
 RWG ROXY KITTY X 0301  
 HL SLC MASTERPLAN 58C  
 DDN 140B



YG	CW	REA	MARB	FAT
-0.23	45	0.75	0.04	-0.05

RTG Mutton Buster is an effortlessly made bull that's easy on the eyes with his refined bone design, clean front and ample rib shape. His sire worked as a heifer bull for us for a couple years and never had any issues come calving time. Mutton Busters dam RTG Fandango 2214 is a notable younger female that has the fleshing ability and udder design we look for.











LOT 25



SIRE

**STON Majestic 5M**

STON 5M - 01/17/2024 - CDGV187745 - Homo Polled - BA50 - Black

CED	BW	WW	YW	Milk	TM	CEM	STAY	DOC
10	2.4	86	128	24	67	3	12	11

SIRE COLEMAN CHARLO 0256  
**COLEMAN BRAVO 6313**  
 AAA COLEMAN DONNA 714

DAM RWG EXACT COMBINATION E409  
**STON MISS SECRET MAID 11K ET**  
 VV WIND ZONG 45Z

O C C PAXTON 730P  
 BOHI ABIGALE 6014  
 CONNEALY ONWARD  
 AAA COLEMAN DONNA 386

RWG RIGHT COMBINATION C506  
 RWG HADIE 3505  
 SLC MASTER PLAN 191U  
 VV WINDY WATER 197W

YG	CW	REA	MARB	FAT
0.05	59	0.52	0.39	0.00

Act. BW **88**

Adj. WW **810**

Adj. YW



Majestic comes to you as the 2024 National Champion Balancer Bull. He exhibits an exceptional blend of power and maternal strengths with a tremendous haircoat in an eye appealing package. As the first calf from a tremendous mother, we are excited for her to become a leading matron in a cow family that sets the bar in the deep end of the pool. Her full sister also mothered the high selling heifer calf at the 2024 Wishlist. Consistency, and quality of this caliber is what makes this enjoyable but most importantly profitable! Majestic will sire thick, moderate framed cattle that you will be proud to own. "I'm going to go out and select the bull that I believe will change the breed" were the final comments used to describe Majestic in the showing, and we couldn't agree more in the potential he offers.





## STON *McDavid* 11M

STON 11M - 02/05/2024 - CDGV187743 - Homo Polled - PC75 - Red

CED	BW	WW	YW	Milk	TM	CEM	STAY	DOC
11	0.3	81	123	28	68	6	12	13

Act. BW **84**

Adj. WW **775**

Adj. YW



SIRE

SIRE **JRI ALAN 68G3**  
 JRI GENERAL PATTON 213B97 ET  
 JRI MS MY PAYDAY 68E2

DAM **STON MISS DEBBIE 4H**  
 STON BLACK PYTHON 47B  
 VV RED DEBBIE 32D

JRI POP A TOP197T83  
 JRI MS EXTRAVAGANT 213T87  
 BASIN PAYWEIGHT 1682  
 JRI MCCLINTOCK 68Y8

PCCI MR TITLELIST 1169Y  
 SLC ROYAL GIRL 28X  
 FIR RIVER STAMKOS 879A  
 VV DEBBIE 62A

YG	CW	REA	MARB	FAT
-0.15	38	0.55	0.24	-0.04

An exceptional JRI Alan calf who will most definitely fulfill the need to make replacements in this market. His softness, muscle and overall balance are the consistent stamp of his sire, and he is mothered by a young Python daughter who is excelling year over year. McDavid has an older full sister who is about to lay down and spit out her first calf, and she cements the decision to use Alan. We are extremely excited for what he is bringing to the table in our herd and expect these bulls to work well in producing eye appealing cattle with some performance.



## STON *Midas* 14M

STON 14M - 02/19/2024 - CDGV187750 - Homo Polled - PC50 - Red

CED	BW	WW	YW	Milk	TM	CEM	STAY	DOC
10	2.1	78	118	16	56	6	13	11

Act. BW **84**

Adj. WW **854**

Adj. YW

SIRE **RED SSS SUNBRY G-MAN 404J**  
 RED SSS GROWLER 815G  
 RED SSS ROSE 160E

DAM **STON MISS SUE 22J**  
 SRWG EXACT COMBINATION E409  
 STON MISS SUE 41Z

RED SSS GRAVITY 296E  
 SSS GOLD EDGE 330Z  
 RED RUST NORTH DAKOTA 27B  
 RED SSS ROSE 246B

RWG RIGHT COMBINATION C506  
 RWG HADIE 3505  
 SLC TOUCHDOWN 82W  
 SFL SUE 304P

YG	CW	REA	MARB	FAT
-0.09	40	0.47	-0.17	-0.03

Midas is a dark red, powerful herdsire prospect who is backed by a tremendous EC daughter from our Sue tribe. She has a perfect udder and is right sized for most of the industry. His sire is an exceptional SSS Red Angus bull, and you can see the same muscle shape, middle and quiet demeanor in his calves. Midas is a standout who is very well put together and will sire heavy weaning weights and replacement females with longevity. Both attributes will prove to be a sound investment moving forward.





# CDC Commercial Heifers



CDC Farms is very proud to offer another great set of commercial heifers to the 2025 Draft Picks Sale. An excellent solid set of red females on offer out of our program that still consist of two groups of Gelbvieh influenced commercial F1 heifers. These particular females on offer are from a strong maternal based program that has been built over four decades focusing on foot structure, udder quality, functionality and productivity to ensure profitable weight gain on steers and well-rounded replacement females. CDC Farms focuses on a complete herd health management protocol. At birth these females receive their Naselgen, Tottrazuril, Selenium and Vitamin ADE shots. Once they reach three months of age leading to pasture kick out, they receive their Bovishield Gold One Shot and Ultrabac 7/Somubac. As the fall run hits when calves become weaned, a booster of Bovishield Gold One Shot and Ultrabac 7/Somubac is re-introduced. Once the calves are weaned and on feed, they are fed a nutritionally balanced total mixed ration to ensure proper growth and development into sound, fertile females. All of the heifers are vet checked and palpated prior to breeding season. The commercial program at CDC Farms strives to raise the next best productive and profitable line of females to focus on continually raising top end steers but more importantly, to raise quality functional cattle that work in today's beef industry.

**CDC Farms would like to thank the 2024 Commercial Heifer volume buyer for their purchases: Cody Wolbeck and his family.**

**CDC Farms :: Dale Congdon :: 403 350 9830**



**Lot 28**

**3 RED Commercial HEIFERS**

Tag #447, 449 & 416



**Lot 29**

**3 RED Commercial HEIFERS**

Tag #446, 432 & 430



# Royal Western Gelbvieh Commercial Heifers

RWG commercial heifers, these heifers are April/May born heifers. Both groups of 3 have been selected from the top females in our commercial division. On offer will be a group of 3 red blaze face heifers, this group has a little extra kick of simmental, maximizing color yet will maintain moderate efficient frame scores. Great group to breed gelbvieh, angus or balancer. The group of solid red heifers will offer a touch more Gelbvieh & Angus, they will be maternal and profit orientated, money making mommas. They are all from good uddered, maternal momma's that for generations have been bred and culled to be low maintenance. The cow herd calves on their own and are great moms. The heifers are all 3 way crosses maximizing Gelbvieh, Simmental and Angus. The heifers are all fed,vaccinated and managed with our own replacements, fed to last, developed to be fertile and ready to breed come spring.



**3 RED BLAZE *Commercial* HEIFERS**

Tag #424, 425 & 437



**3 RED *Commercial* HEIFERS**

Tag #414, 439 & 443



# *We would like to extend a huge thank you to all our past buyers:*

4W Farms  
 AGR Farms  
 Albert Bamford  
 Anchor P Farms  
 Andrew Kirk  
 Arnaldo Elias- Rancho El Tapiro  
 B & R Ranch  
 Barber Farms  
 Barwick Gelbvieh  
 Beastrom Ranch  
 Black Poplar Ranch  
 Brian Fletcher  
 Brian Hrdlicka  
 Brian Pfeffer  
 Brian Stratuliak  
 Brittain Farms  
 Butler Creek Farms  
 Cameron Suominen  
 CDC Farms  
 Chimney Butte Ranch  
 Cody Milliken  
 Cody Wolbeck  
 Cory Marshall  
 Covington Gelbvieh  
 Cowlick Ranch

Cranview Gelbvieh  
 Crooked Creek Cattle Co  
 Curtis McCracken  
 Dale Oliver  
 Dan Roth  
 Danny Brown  
 Darren & Crystal Hann, Sean Soppitt  
 Darwin Berg  
 Don & Dianna Ewanicke  
 Donald McMann  
 Dustin McMann  
 Doug & Rita Cox  
 Eugene Nichols  
 Frontier Prairie Farms  
 Gary & Shelly Rusaw  
 George Simpson  
 Goodview Gelbvieh  
 Green Acres Cattle Co  
 Gustin's Diamond D  
 Handel Farms  
 Harvey Goetz  
 Haustein Farms  
 High Country Acres  
 Hillsdown Gelbvieh  
 HMR Livestock

Ian Koester  
 Ivers Cattle Company  
 Jaden Bettcher  
 Janzen Gelbvieh  
 Jayden Bettcher  
 Jeff Anderson  
 Joe Lansing  
 Joey Davis- 16 Tons Gelbvieh  
 John Pfeffer  
 Judd Ranch Inc  
 Justin & Brandi Vetter  
 K. Congdon Farms  
 Katie Michaelchuk  
 Keith Gudmundson  
 Kelly Cardinal  
 Ken Homeniuk  
 Ketterling Gelbvieh  
 Kevin Bennett  
 Kevin & Rhonda DalBalcon  
 Kicking Horse Ranch  
 LC Cattle- Barry Davisson  
 Len Lawrence  
 Len McCook  
 Len Kohlman- Leoleen Gelbvieh  
 Lennor Farms

Les Wiebe  
 Lorne Conrad  
 Lucas & Amanda Vangsness  
 Lyle Jones  
 Lyle Morgenstern  
 Mari-Anne Wiebe  
 Matthew Fuller  
 Mayton Farms Inc  
 Melissa Burton  
 Milliken Farms  
 Milne's Gelbvieh  
 Mike Jasper  
 Moe Gelbvieh  
 Myron Vick  
 Nattestad Farms  
 Nelson Gelbvieh  
 Neil Frank  
 Nowack Cattle Co  
 Pat Walsh  
 Peterosa  
 Pin to Point Gelbvieh  
 Plus One Cattle Company  
 Prairie Hills Gelbvieh  
 Quinn Harder  
 Rancho Agualinda

Riverside Ranch  
 Robert Guynup  
 RPS Gelbvieh  
 RJ Genetics  
 Rocky Top Gelbvieh  
 RPS Gelbvieh  
 Rumfeldt Farms  
 Rusty Nichols  
 Severtson Land & Cattle  
 Silver Line Farm  
 Split Creek Ranch  
 Steve May  
 Steven Terry  
 Sword Farms  
 Tanner & Michelle Lawton  
 Tim Fuller  
 Tim Ruth  
 TJB Gelbvieh  
 Tony & Kathy Kamlah  
 Trevor Neuls  
 Wayne Selin  
 Wes Newton  
 Williams Gelbvieh Farm











## 4DJ Little Dance 3456L

HDKJ 456L - 19/4/2023 - 2359466 - Black

CED	BW	WW	YW	Milk	TM	CEM	STAY	DOC
5	0.7	51	98	23		10		19

Act. BW 59

Adj. WW 656

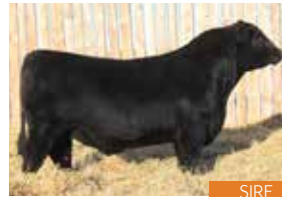
Adj. YW 1224

SIRE **4DJ JUST A DANCE 101J**  
S A V RAINDANCE 6848  
U-2 ERELITE IX

DAM **4DJ EVENING TINGE 103J**  
4DJ GROOVY STATUS 904G  
4DJ EVENING TINGE 901G

COLEMAN CHARLO 0256  
S A V BLACKCAP MAY 4136  
S A V FINAL ANSWER 0035  
U-2 ERELITE 8109U

KR STATUS 4267  
HF TIBBIE 101Z  
MUSGRAVE 316 STUNNER  
HF EVENING TINGE 294X



SIRE



GRAND DAM

YG	CW	REA	MARB	FAT
	38	0.41	0.23	0.054

4DJ Little Dance 456L is the home run angus heifer bull in the offering with a 59 lb Birth weight. He's moderate in frame, clean cut and everything a heifer bull should be but with above average muscle shape. This bull is backed by a great uddered dam who's the maternal sister to last year's high selling angus bull. One again check out HDKJ 461L as that's another maternal brother and he's again the strongest phenotype in the pen. 4DJ Little Dance lol 456L will pay back his value in just calving ease alone, then add in the female quality backing him and he's a great sire prospect that brings value to your beef operation.







SIRE



MAT. SIB.



GRANDDAM

## 4DI Last Dance 3461L

HDKJ 461L - 20/04/2023 - 2314143- Black

CED	BW	VVW	YW	Milk	TM	CEM	STAY	DOC
3	1.9	57	113	25		8		13

SIRE S A V RAINDANCE 6848  
**4DJ JUST A DANCE 101J**  
 U-2 ERELITE 1X

DAM MUSGRAVE 316 STUNNER  
**4DJ EVENING TINGE 901G**  
 HF EVENING TINGE 294X

COLEMAN CHARLO 0256  
 S A V BLACKCAP MAY 4136  
 S A V FINAL ANSWER 0035  
 U-2 ERELITE 8109U

LD CAPITALIST 316  
 MCATL BLACKBIRD 831-1378  
 DUFF 927K MOVIN UP 874  
 HF EVENING TINGE 157U

Act. BW **79**  
 Adj. WW **735**  
 Adj. YW **1323**

YG	CW	REA	MARB	FAT
	55	0.34	-0.10	0.061



HDKJ Last Dance 461L plain and simply is one of the best bulls in the pen. His dam and maternal sister flat out produce, his maternal brother from last year was a stud, and the high selling angus bull and did a great job breeding. Last Dance 461L sired by a great pedigreed angus sire we raised and proud to say his flush mate sister is one of the top young females in the herd. Picture perfect udder comes standard, long square hip with lots of pelvic, added shape and best of all, Last Dance 461L, like his siblings, has a great disposition. Excellent performance data and EPD profile to match. A real high quality individual, seed stock or commercial this guys gonna add value!





## 4DJ Love Dance 471L

HDKJ 471L - 26/04/2023 - 2359457 - Black

CE	BW	WW	YW	Milk	TM	CEM	STAY	DOC
-1	4.0	72	123	17		1		-2

Act. BW 84

Adj. WW 767

Adj. YW 1279

SIRE **S A V RAINDANCE 6848**  
COLEMAN CHARLO 0256  
S A V BLACKCAP MAY 4136

DAM **BROOKING BEAUTY 6066**  
BROOKING BANK NOTE 4040  
BROOKING BEAUTY 322

O C C PAXTON 730P  
BOHI ABIGALE 6014  
S A V 8180 TRAVELER 004  
S A V MAY 2397

CONNELLY EARNAN 076E  
E A ROSE 918  
S A V HARVESTOR 0338  
TLA BEAUTY 6R



SIRE



GRANDDAM

YG	CW	REA	MARB	FAT
	47	0.84	0.12	0.011

4DJ Love Dance 471L is the results of our ET program, he combines one of industry's most proven, highly productive cow family's on his maternal side and its stacked every generation with today's best maternal angus genetics. He's a solid structured, moderate framed bull, that's as clean and classy as you can make them. He's got so much potential to be one of the best angus bulls you'll own and that will be validated by the time you calve his daughters and all that maternal cow power and genetic punch shows up.



## 4DJ Limbo Dance 472L

HDKJ 472L - 26/04/2023 - 2364408 - Black

CE	BW	WW	YW	Milk	TM	CEM	STAY	DOC
12	0.6	58	95	17		10		6

Act. BW 82

Adj. WW 736

Adj. YW 1277

SIRE **S A V RAINDANCE 6848**  
COLEMAN CHARLO 0256  
S A V BLACKCAP MAY 4136

DAM **BROOKING BEAUTY 6066**  
BROOKING BANK NOTE 4040  
BROOKING BEAUTY 322

O C C PAXTON 730P  
BOHI ABIGALE 6014  
S A V 8180 TRAVELER 004  
S A V MAY 2397

CONNELLY EARNAN 076E  
E A ROSE 918  
S A V HARVESTOR 0338  
TLA BEAUTY 6R



DAM



GRAND SIRE

YG	CW	REA	MARB	FAT
	29	0.69	0.26	0.036

4DJ Limbo Dance 472L is the flush mate brother to 471L, this set of embryos was purchased with the intention of adding as much maternal strength as possible. Well, their flush mate sister is flat out awesome and we're excited for her future. 472L is a spitting image of his brother a testament to the genetic consistency. You wanna make awesome feeder cattle and keep back every heifer calf and get that positive economic value for generations here's your chance of two flush mate brothers.





MAT. SIB



DAM

## RWG *Lasting Effect* L303

RWG L303 - 03/26/2023 - CDGV184849 - homo Polled - PB94 - Hetro Black

CED	BW	WW	YW	Milk	TM	CEM	STAY	DOC
14	1.1	74	118	28	65	10	14	18

SIRE SLC OUTBACK 142X  
**RWG HORSE POWER H311**  
RWG ALLSTAR D510

DAM RWG BUSTIN' STONES 4603  
**RWG KITTY E411**  
RWG ROXY KITTY X 0301

CES DECKA OUTBACK 755  
SFL SFL SLC SUE 325P  
RWG WAR ADMIRAL 2528  
PHG ALLSTAR A71

BEAS BEAS 2806Z  
RWG DAISY XPREZZ 2401  
RWG TOTALLY-EXPOSED 7918 ET  
RWG ROXY KITTY 5030

Act. BW **65**

Adj. WW **638**

Adj. YW **1161**

YG	CW	REA	MARB	FAT
-0.10	28	0.56	0.34	0.00

RWG Lasting Effect L303 is the absolute meat wagon, big time capacity, Horsepower son. His prolific donor dam, RWG Kitty 7411, has made a huge impact in our breeding program and is a personal favorite cow; because year in, year out, she absolutely sets the standard for quality of production. Her ET progeny are always standouts, calling home in multiple seedstock programs across North America. Her natural progeny always have her presence and character, setting them just one notch above the rest of the pen. RWG Lasting Effect L303 is the natural son that crushes every metric previously set. Not even a bit of a surprise to us, he's sired by the RWG Horsepower H311 bull. Horsepower progeny have quickly set the standard for elite quality Gelbvieh genetics. They have won in the show ring consistently at every level, topped every production sale and most importantly the first set of daughters in production are flat out elite. RWG Lasting Effect L303 could easily be the best of the Kitty 7411 sons to date.





## RWG Lug Nut L305

RWG L305 - 03/29/2023 - CDGV184459 - Homo Polled - PB94 - Hetro Black

CED	BW	WW	YW	Milk	TM	CEM	STAY	DOC
14	0.2	70	106	17	52	9	14	13

Act. BW **71**  
Adj. WW **667**  
Adj. YW **1123**

SIRE SLC OUTBACK 142X  
**RWG HORSE POWER H311**  
RWG ALLSTAR D510

CES DECKA OUTBACK 75S  
SFL SFL SLC SUE 325P  
RWG WAR ADMIRAL 2528  
PHG ALLSTAR A71

DAM JRI HALLELUJAH 246E50  
**RWG PARKLAND H501**  
SLC SLC PARKLAND 5E

JRI SECRET POWERS 254C821  
JRI MS HONEY 246Z10  
SLC SLC VELOCITY 14C  
SLC PARKLAND 220U



GRANDDAM

YG	CW	REA	MARB	FAT
-0.19	36	0.73	0.20	-0.03

RWG Lug Nut L305, his name is suiting . . . let me explain. You don't notice him in the pen most times on the first walk through, but he's one of the most important components in the systems. Just like a Lug Nut, often over looked, but a critical item to accomplishing end goals. Lug nut L305 is complete in design and build, lots of natural mass and shape, powerful and moderate framed. He's from the same cow family and a paternal sibling to our 2024 National champion female. He will be one of the best curve bending Horsepower sons in the offering, backed by generations of a near perfect teat and udder cow family. He's the ideal bull to improve marketability of your feeder cattle, big bodied, lots of hair and easy doing, yet make replacements that your jealous neighbours want to cut a hole in the fence for.



## RWG Liquor 3308

RWG L308 - 03/07/2023 - AMGV1500173 - Homo Polled - BA50 - Homo Black

CED	BW	WW	YW	Milk	TM	CEM	STAY	DOC
19	-2.0	65	109	27	60	12	22	12

Act. BW **70**  
Adj. WW **673**  
Adj. YW **1131**

SIRE DJS DERRINGER 96X  
**DJS 46E**  
DJS 307A

TAU GUNSLINGER 19U  
MISS 004-76T  
S A V FINAL ANSWER 0035  
DJS 112U ET

DAM MGR TREASURE  
**TAU MS. TREASURE 140J ET**  
TAU MS. GUNNISON 106R 3147A

V A R DISCOVERY 2240  
SJH IMPRESSION  
TAU GUNNISON 106R  
TAU MS SOLUTION 9140W

YG	CW	REA	MARB	FAT
-0.07	11	0.34	0.47	0.01

RWG Liquor L308 here's an ideal heifer bull prospect that offers a completely outcross pedigree for any of our previous customers. His calving ease, low birth, easy fleshing design matches his dam to a tee! She was purchased from Taubenheim Gelbvieh in Nebraska with a group of females and has done a great job. His actual data yells ideal heifer bull, his EPD profile makes him elite heifer bull with added quality grade. We view him as a bull ideally you put with a large group of heifers for a year or two, then can shift to the large frame, more continental cows who need to be moderated and gain back lost cow efficiency.







## RWG Listen Up L406

RWG L406 - 04/04/2023 - CDGV184426 - Homo Polled - PB94 - Red

CED	BW	WW	YW	Milk	TM	CEM	STAY	DOC
5	2.4	84	122	25	67	0	14	13

Act. BW 97

Adj. WW 902

Adj. YW 1386

**SIRE** JRI GENERAL PATTON 213B97 ET  
**JRI WHERE'S THE BEEF 307H40**  
 JRI MS ONE DERFUL 307D30

JRI POP A TOP197T83  
 JRI MS EXTRAVAGANT 213T87  
 JRI OPTIMIZER 148A24  
 JRI MS RUBY 307Y40

**DAM** RWG EXACT COMBINATION E409  
**RWG PARKLAND G414 ET**  
 SLC SLC PARKLAND 31E ET

RWG RIGHT COMBINATION C506  
 RWG HADIE 3505  
 VV ZAKE 114Z  
 SLC PARKLAND 220U

YG	CW	REA	MARB	FAT
-0.14	53	0.69	0.19	-0.04



SIRE



DAM

RWG Listen Up L406, here's the maternal brother to our 2024 National Champion female, he's all mass, power, pay weight and easy keeping. He's a real scale buster just like his tank of a sire, JRI Where's the Beef 307H40, yet his maternal details will be excellent for a performance sire. His Dam and maternal sister both have awesome teat size and placement, plus strong suspensory ligament, meaning daughters that will have awesome udder quality late into their productive years. Small, tidy udders that still wean massive calves, it's the "Parkland cow family" trademark. RWG Listen Up L406 will be one of the best red power purebred bulls to sell in 2025. The kind of bull that creates quick ROI.



## RWG Low Key L410 ET

RWG L410 - 04/06/2023 - CDGV184835 - Homo Polled - PB94 - Homo Black

CED	BW	WW	YW	Milk	TM	CEM	STAY	DOC
13	0.6	78	114	28	67	7	15	12

Act. BW 95

Adj. WW 819

Adj. YW 1264

**SIRE** PHG EMINENCE E02  
**PHG JUST DO IT J120**  
 PHG BETTY B57

BABR DOMINANCE 4280B  
 DDN BELLY RIVER AMBER 56A  
 RWG YIKES 1512  
 DCH HILLE Y105

**DAM** BEAS BEAS 2806Z  
**RWG KITTY'S DREAM D526**  
 RWG ROXY KITTY X 0301

MCFG 94X  
 BEAS 7084T  
 RWG TOTALLY-EXPOSED 7918 ET  
 RWG ROXY KITTY 5030

YG	CW	REA	MARB	FAT
-0.10	47	0.75	0.11	-0.01



DAM

RWG Low Key L410 ET is a highly maternal bull, who offers lots of length, refined in his skull and shoulder, while having positive payable pounds in terms of performance from BW to Yearling. He's the homo black brother from the flush to PHG Just Do it J120 x RWG Kitty's Dream 6526. The maternal cow power behind him is exceptional and he should be the sire you aim to keep daughters from and build an exceptional cow herd with.







DAM



FULL SIB.

## RWG Power Lift L414

RWG L414 - 04/07/2023 - CDGV184475 - Homo Polled - PB94 - Red

CED	BW	WW	YW	Milk	TM	CEM	STAY	DOC
11	0.8	66	99	20	52	8	14	13

SIRE SLC OUTBACK 142X  
**RWG HORSE POWER H311**  
RWG ALLSTAR D510

DAM SLC SLC VELOCITY 14C  
**SLC PARKLAND 5E**  
SLC PARKLAND 220U

CES DECKA OUTBACK 755  
SFL SFL SLC SUE 325P  
RWG WAR ADMIRAL 2528  
PHG ALLSTAR A71

SLC OUTBACK 142X  
SLC CHARLA 65R  
SLC MERV 12N  
SLC COPPER PARKLAND 139G

Act. BW **92**

Adj. WW **655**

Adj. YW **1218**

YG	CW	REA	MARB	FAT
-0.10	41	0.56	0.23	-0.02



RWG Power Lift L414, one of the most exciting red Horsepower sons we have ever created. We utilized him as a walking sire this past summer on a strong set of purebred females. We feel so strongly about his maternal strength and overall phenotype, as he blends the structural correctness we demand, awesome hair, skull design, and presence. He's so exciting as he will reduce BW compared to sire, yet keep all of the same market relevant traits and once again backed by one of our favorite donors and a great cow family. His full sister is already in the donor pen and lots of his maternal sisters are our favorite females. They always make the keeper pen and often the show team. Including his little sister who was division champ this fall. A true herd sire prospect you can invest in with confidence.

**Selling 1/2 semen interest and 1/2 possession.**



# Royal Western Gelbvieh

Semen sales will stay open until the Hammer Falls on Feb 11th at that time all North American sales will close until Jan 1 2027.

**Selling 1/2 possession with winter &/or Fall calving walking rights. 1/2 semen interest revenue sharing.**



SIRE



DAM



MAT. SIB.



## RWG Loaded L418

RWG L418 - 04/08/2023 - CDGV184424 - Homo Polled - PB94 - Red

CED	BW	WW	YW	Milk	TM	CEM	STAY	DOC
10	3.1	89	130	30	74	3	9	10

SIRE JRI GENERAL PATTON 213B97 ET  
**JRI WHERE'S THE BEEF 307H40**  
 JRI MS ONE DERFUL 307D30

DAM RWG BLOWIN' MINDS 4402  
**RWG LORA E304 ET**  
 SLC LORA I64Y

JRI POP A TOP 197T83  
 JRI MS EXTRAVAGANT 213T87  
 JRI OPTIMIZER 148A24  
 JRI MS RUBY 307Y40

BEAS BEAS 2806Z  
 RWG ZEE KITTY 2534  
 SLC MASTER PLAN 191U  
 SLC LORA C 299P

Act. BW **93**

Adj. WW **899**

Adj. YW **1545**

YG	CW	REA	MARB	FAT
-0.09	59	0.74	0.08	-0.02

RWG Loaded L418 plain and simply is a stud! With so much pen presence, sheer mass, explosive muscle design on one of the absolute nicest head designs in the entire breed. His details of added bone, smooth joints, correct lines and angles, unmatched performance, yet ideal neck placement makes him a unique breeding piece. Then add in his awesome dam RWG Lora E304 ET who has become the backbone of our "Lora" cow family. She exceeds production every year and has landed 3 sons into our herd bull pen to date. Plus a daughter that's one of the very few untouchables in our breeding program. RWG Loaded L418 is one of the most maternally stacked bulls we have ever raised. Even harder to accomplish with his scale shattering growth. He gets all that substance and mass from his record setting sire, JRI Where's the Beef 307H40, was the \$25k Judd Ranch high seller who has quickly returned his investment. His progeny are easy doing, great haired, with added bone and foot quality, plus performance that rivals the best of other continental cattle. Use RWG Loaded L418 to add maternal strength, keep and build elite females, while making the best set of high growth sons industry has seen to date.







## RWG *Live It Up* L422 ET

RWG L422 - 04/09/2023 - CDGV184838 - Homo Polled - PB94 - Hetro Black

CED	BW	WW	YW	Milk	TM	CEM	STAY	DOC
13	1.5	86	132	28	71	7	15	12

Act. BW **96**

Adj. WW **876**

Adj. YW **1446**

SIRE PHG EMINENCE E02  
**PHG JUST DO IT J120**  
PHG BETTY B57

BABR DOMINANCE 4280B  
DDN BELLY RIVER AMBER 56A  
RWG YIKES 1512  
DCH HILLE Y105

DAM BEAS BEAS 2806Z  
**RWG KITTY'S DREAM D526**  
RWG ROXY KITTY X 0301

MCFG 94X  
BEAS 7084T  
RWG TOTALLY-EXPOSED 7918 ET  
RWG ROXY KITTY 5030



DAM



MAT. SIB.

YG	CW	REA	MARB	FAT
-0.10	56	0.86	0.11	-0.01

RWG Live it Up L422 ET is the genetic result of the most influential donor in our program and the 54K high selling PHG Just Do it J120. Live it up L422 represents the best of this flush, we can see so much of his donor shine through in this sire prospect. His details are nice, over all body and design are appealing with all kinds of economic driven traits. Whether you wanna study his actual performance and notice his massive spread from birth to weaning and into yearling, or his EPD profile both show the same elite value adding. His disposition is awesome, only adding to his value. We will calve his flush mate sister's in a few months and they look to be very maternal and setting up to have ideal teat and udder quality.



## RWGC *Lay Low* L425

RWGC L425 - 04/09/2023 - CDGV184813 - Homo Polled - PB94 - Black

CED	BW	WW	YW	Milk	TM	CEM	STAY	DOC
16	-2.2	64	95	23	55	11	18	11

Act. BW **72**

Adj. WW **705**

Adj. YW **1265**

SIRE SLC OUTBACK 142X  
**RWG HORSE POWER H311**  
RWG ALLSTAR D510

CES DECKA OUTBACK 75S  
SFL SFL SLC SUE 325P  
RWG WAR ADMIRAL 2528  
PHG ALLSTAR A71

DAM JRI SECRETARIAT 285E78  
**RWG PARKLAND H405 ET**  
SLC SLC PARKLAND 31E ET

JRI SECRET SENSATION 140A43  
JRI MS PRIME STAR 285Z68  
VV ZAKE 114Z  
SLC PARKLAND 220U



GRANDDAM

YG	CW	REA	MARB	FAT
0.01	28	0.35	0.15	0.01

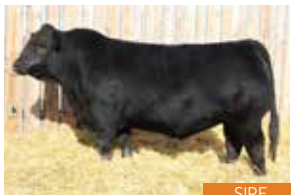
RWGC Lay Low L425 the best tactical advantage when playing Nerf Guns is "Lay Low". This is Chayse's bull and if you know anything about Chayse it will be his passion for Nerf and how good he is at being sneaky. RWGC Lay Low L425 reminds me of that same intelligent strategy, don't be obvious, don't be noticed, but surprise with how good you are. This is a kick ass bull with great structure and backed by the Parkland Cow family making him a sibling to our 2024 National Champion female. The best part of this guy is how well his dam pulls BW out of our performance sires. That's right, get all the Horsepower, with Secretariat calving ease and reduced BW. RWGC Lay Low L425 will make unreal females and sire a set of fantastic sons and you'll look very smart for Laying Low and waiting to get this Horsepower son bought.



We will not make the same mistake two years in a row, we are selling 1/2 semen interest and 1/2 possession.



LOT 45



SIRE

## RWG *Lock The Door* L431

RWG L431 - 04/11/2023 - CDGVI84443 - Homo Polled - PB88 - Hetro Black

CED	BW	WW	YW	Milk	TM	CEM	STAY	DOC
8	1.8	76	112	27	65	7	18	14

SIRE SLC OUTBACK 142X  
**RWG HORSE POWER H311**  
 RWG ALLSTAR D510

DAM JRI SANTIAGO 37C31  
**RWG FREE KITTY F419**  
 RWG KITTY D511

CES DECKA OUTBACK 755  
 SFL SFL SLC SUE 325P  
 RWG WAR ADMIRAL 2528  
 PHG ALLSTAR A71

JRI TOP PRODUCER 282Z3  
 JRI MS BLACK IMPULSE 37Z3  
 BEAS BEAS 2806Z  
 RWG UNAVAILABLE KITTY 8510

Act. BW **94**

Adj. WW **804**

Adj. YW **1293**

YG	CW	REA	MARB	FAT
-0.09	44	0.70	0.01	0.00

I don't even know where to start with this home run sire prospect. Other than he might go down as my biggest breeding program mistake to date. I say that because we have admired this bull from a very young age, kept him around the yard pasture all summer with the horse, as a spare incase we had an injury to any walking sire. Long story short zero injury's to herd bulls = we never used him. Time passes and RWG Lock the Door L431 is the last minute late entry to CWA, utilizing a cross class substitution, he's poorly halter broke, not lead broke, bad clip job because he's not been in the show barn and walks into Agribition to win Champion Bull. This is all relevant because he is plain and simply that good in his structural design, build, body pattern, foot and bone work. Not to mention massive scrotal, typical of RWG Horsepower H311 sons. His paternal sister was our undefeated National Champion Female. If you demand awesome teat and udder quality with the sires you invest into, this is the bull you need to own part of.





## RWG Jealous Levi's L432

RWG L432 - 04/11/2023 - CDGV184455 - Homo Polled - PB88 - Hetro Black

CED	BW	WW	YW	Milk	TM	CEM	STAY	DOC
11	1.2	78	115	18	58	6	13	13

Act. BW 89

Adj. WW 859

Adj. YW 1303

SIRE **RWG JEALOUS J415**  
 JRI HALLELUJAH 246E50  
 RWG KITTY'S GEM G409 ET

JRI SECRET POWERS 254C821  
 JRI MS HONEY 246Z10  
 RWG RIGHT COMBINATION C506  
 RWG KITTY'S DREAM D526

DAM **RWG HAPPY FLOWER H458**  
 RWG FREE BEER F401 ET  
 RWG DESTINY'S FLOWER 8201

VISION UNANIMOUS 1418  
 SLC LORA 164Y  
 GREAT DIVIDE 503C  
 RWG DESTINY D518



SIRE

YG	CW	REA	MARB	FAT
-0.03	42	0.45	0.32	-0.01

RWG Jealous Levi's L432, his sire was a past sale highlight selling to PHG in North Dakota for 25K. We had walked him on a small select group and this is his standout son. It's a great mating and yielded awesome results. He's a big quartered bull, with extra width of hip and wide pins. Lots of muscles shape, clean and classy lines, sharp fronted with a nice head. So many things about him stand out, he's easy to find in the pen and one that hits the top of most people's lists when they tour. His dam is a top notch young Free Beer momma that showcases why balancer genetics flat out are industry's best females. Strong maternal traits, udder quality, body mass, fleshing ability and fertility in one package. Look at his data, study his phenotype and you'll understand how he will stamp a set of high value calves that will be easy to feed and market. Keep back the daughters!!!



## RWG Lucky Cat L442

RWG L442 - 04/15/2023 - CDGV183450 - Homo Polled - PB94 - Hetro Black

CED	BW	WW	YW	Milk	TM	CEM	STAY	DOC
15	2.8	74	104	23	60	8	13	8

Act. BW 91

Adj. WW 899

Adj. YW 1263

SIRE **DRT LONESOME CAIRO 230H**  
 DVE DAVIDSON MACON 111C  
 DRT LONESOME DANIELLE 150F

PHG BLACK MAC Z13  
 DVE DAVIDSON MS NAVAHO 56A  
 DVE DAVIDSON SAM 16D  
 DRT LONESOME GOOD TIME GIRL

DAM **RWG KITTY J429 ET**  
 JRI IN DEMAND 254F839 ET  
 RWG KITTY'S GEM G409 ET

JRI SECRET INSTINCT 254U83  
 JRI MS POPPY LOVE 254Z72  
 RWG RIGHT COMBINATION C506  
 RWG KITTY'S DREAM D526



DAM



GRAND DAM

YG	CW	REA	MARB	FAT
-0.17	19	0.48	0.23	-0.03

RWG Lucky Cat L442, this is Chayse's bull calf from his 2023 Agribition Champion female. She's now a member of our donor pen and is one of the biggest bodied, all guts, substance and mass donors and obviously backed by generations of elite producing Kitty cow family donors. Lucky Cat L442 is sired by Cairo, a real calving ease specialist and left us with a sire group of high quality daughters in production. Lucky Cat has way more length, growth and overall size than our typical Cairo progeny. He would cross exceptionally well with a set of British based females to make unreal replacements and strong feeder cattle that yield and quality grade.



Lot 48

## RWGW Loaded L446

RWGW L446 - 04/16/2023 - CDGVI84818 - Homo Polled - PB94 - Hetro Black

CED	BW	WW	YW	Milk	TM	CEM	STAY	DOC
4	3.2	90	137	25	70	3	16	14

Act. BW 101

Adj. WW 852

Adj. YW 1362



GRAND SIRE

SIRE SLC OUTBACK I42X  
**RWG HORSE POWER H311**  
RWG ALLSTAR D510

CES DECKA OUTBACK 755  
SFL SFL SLC SUE 325P  
RWG WAR ADMIRAL 2528  
PHG ALLSTAR A71

DAM RWG RIGHT COMBINATION C506  
**RWG KITTY G407 ET**  
RWG KITTY'S DREAM D526

RWG WAR ADMIRAL 2528  
SLC LORA 164Y  
BEAS BEAS 2806Z  
RWG ROXY KITTY X 0301

YG	CW	REA	MARB	FAT
-0.06	69	0.96	0.16	0.00

RWGW Loaded L446 for anyone who seen his record breaking sire at a young age, it's easy. This is his reflection, we have never made a son quite this close to being daddy's clone! His phenotype, pen presence, power, mass, width of base, extra scrotal, performance and yet keeping the right mature frame. Heck even compare 100K genomic enhanced EPDS, minor differences. If you missed owning Horsepower, or always wanted a piece of the genetic package, here's your best chance to buy the son that breeds just like daddy. He'll leave high sellers and highly sought after progeny, yet for your bonus is backed by one more generation of great cow family's and adds to the genetic power and consistency. Don't miss this guy in your evaluations, just take one look at what sire has accomplished and add that value to your cow herd.



Lot 49

## RWG Last Name L450

RWG L450 - 04/16/2023 - CDGVI84435 - Homo Polled - PB94 - Homo Black

CED	BW	WW	YW	Milk	TM	CEM	STAY	DOC
7	4.3	81	130	24	64	6	17	11

Act. BW 91

Adj. WW 689

Adj. YW 1236



DAM

SIRE SLC OUTBACK I42X  
**RWG HORSE POWER H311**  
RWG ALLSTAR D510

CES DECKA OUTBACK 755  
SFL SFL SLC SUE 325P  
RWG WAR ADMIRAL 2528  
PHG ALLSTAR A71

DAM BEAS BEAS 2806Z  
**RWG JASMINE C708**  
RWG YA-JT 1617

MCFG 94X  
BEAS 7084T  
PHG MR. WIZARD W27  
RWG JASMINE'S TRADITION 7105

YG	CW	REA	MARB	FAT
-0.11	52	0.83	0.19	-0.01

RWG Last Name L450, here's the rugged all bone and extra power sire prospect in the group. If you're looking for extra punch to create top dollars in the fall on a set of steers, yet be confident enough to keep back daughters this bull will check those boxes. His mature momma RWG 5708 has a consistent track record of producing at the top of our breeding program. Her sons & daughters always make keeper cattle. They are so economic in design and functional it's easy to want a whole cow herd or cows that just get it done like her every year. A profit focused sire prospect!



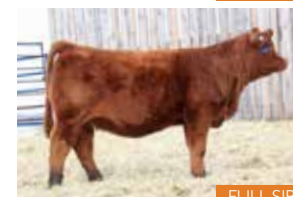
MAT. SIB.







DAM



FULL SIB.



GRAND SIRE

## RWG *Lights Out* L458

RWG L458 - 04/19/2023 - CDGV184446 - Homo Polled - PB94 - Red

CED	BW	WW	YW	Milk	TM	CEM	STAY	DOC
11	1.3	81	120	29	70	8	14	15

SIRE SLC OUTBACK 142X  
**RWG HORSE POWER H311**  
RWG ALLSTAR D510

DAM JRI GUNG HO 282C51  
**RWG LORA G410 ET**  
RWG LORA E304 ET

CES DECKA OUTBACK 755  
SFL SFL SLC SUE 325P  
RWG WAR ADMIRAL 2528  
PHG ALLSTAR A71

JRI HOSS 293A43 ET  
JRI MS FRANKIE 282R11  
RWG BLOWIN' MINDS 4402  
SLC LORA 164Y

Act. BW **84**

Adj. WW **804**

Adj. YW **1326**

YG	CW	REA	MARB	FAT
-0.10	60	0.94	-0.06	0.00



RWG Lights Out L458 is the power house son of RWG Lora 9410, maternal sister to RWG Loaded L418 and sired by none other than Horsepower. This will be the last big set of these sons so don't miss the opportunity. We strongly feel RWG Lights Out L458 is about as industry relevant as any bull in the offering. He has tremendous length of body plus being a big topped bull that offers added muscle mass while being as smooth and complete as a heifer bull. Sharp in his front 1/3 rd and beautiful head, add the absolute mat of hair, translates into the ability to sire sets of steer calves that feedlots desire and fill your replacement pen with some of the most profitable replacements in the industry. We feel so strongly about him we walked him in a major role behind our recip females and a select group of seed-stock mommas.



Lot 51

## RWG Late L457

RWG L457 - 04/19/2023 - CDGV184461 - Homo Polled - PB94 - Red

CED	BW	WW	YW	Milk	TM	CEM	STAY	DOC
22	-0.9	60	83	23	52	12	14	12

Act. BW 61

Adj. WW 700

Adj. YW 1230

SIRE DVE DAVIDSON MACON IIIIC  
**DRT LONESOME CAIRO 230H**  
DRT LONESOME DANIELLE 150F

PHG BLACK MAC Z13  
DVE DAVIDSON MS NAVAHO 56A  
DVE DAVIDSON SAM 16D  
DRT LONESOME GOOD TIME GIRL

DAM JRI SECRETARIAT 285E78  
**RWG KITTY J409**  
RWG KITTY E41I

JRI SECRET SENSATION 140A43  
JRI MS PRIME STAR 285Z68  
RWG BUSTIN' STONES 4603  
RWG ROXY KITTY X 0301

YG	CW	REA	MARB	FAT
-0.28	15	0.59	0.26	-0.04



DAM SIB.



GRAND DAM

RWG Late L457 is the standout son of DRT Cairo 230H and it's no surprise as his Dam is a flush mate sister to our herd sire RWG Holiday Inn H415 ET. This genetic mating simply worked. He's great structured, soggy, with lots of red meat, great skulled and looks like a real curve bender. A breeder quality heifer bull, by far one of the better low birth weight bulls we have raised. It should be no surprise, but a good look at his dams flushmate brothers calving ease to growth values and RWG Late L437 will be even a step better in terms of reduced BW and added calving ease. If you want a heifer bull that gives you so much more than just calving ease here's your sire! **Retaining 1/2 semen interest.**



Lot 52

## RWG Labatt L460

RWG L460 - 04/20/2023 - CDGV184429 - Homo Polled - PB94 - Red

CED	BW	WW	YW	Milk	TM	CEM	STAY	DOC
9	-0.7	61	86	25	56	4	14	14

Act. BW 89

Adj. WW 799

Adj. YW 1299

SIRE SLC OUTBACK 142X  
**BLB GOODVIEW JETSON 124J**  
DDN BELLY RIVER FANCY 8138F

CES DECKA OUTBACK 75S  
SFL SFL SLC SUE 325P  
DDN DRIVER 133D  
DDN 36D

DAM JRI SECRETARIAT 285E78  
**DDN 03H**  
DDN BELLY RIVER FANTA 8172F

JRI SECRET SENSATION 140A43  
JRI MS PRIME STAR 285Z68  
HL SLC MASTERPLAN 58C  
DDN 18C

YG	CW	REA	MARB	FAT
-0.01	32	0.31	0.30	0.00



DAM



GRAND SIRE

We purchased Labatt's sire from Goodview Gelbvieh where he was the top seller and sale feature. Brought in for his strong maternal pedigree and structural correctness. He has lived up to our expectations. Labatt's dam is one of our favorite purchases from Nelson Gelbvieh as she is a moderate efficient female with excellent udder quality and very strong in terms of structure and foot quality. He is set up to be a very maternal sire, versatile on a very wide range of female bases. A clean cut bull, with a lot of class, yet is wide based and pinned a solid herd sire prospect that should breed consistent.





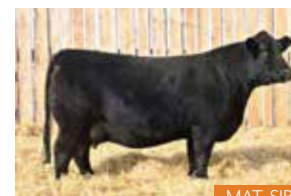
Selling 1/2 possession and 1/2 semen interest!



DAM



FULL SIB.



MAT. SIB.



MAT. SIB.



## RWG *Liquor Talking* L468

RWG L468 - 04/23/2023 - CDGV184427 - Homo Polled - PB94 - Homo Black

CED	BW	WW	YW	Milk	TM	CEM	STAY	DOC
11	1.1	90	144	32	76	9	16	12

SIRE SLC OUTBACK 142X  
**RWG HORSE POWER H311**  
 RWG ALLSTAR D510

DAM BEAS BEAS 2806Z  
**RWG KITTY'S DREAM D526**  
 RWG ROXY KITTY X 0301

YG	CW	REA	MARB	FAT
-0.17	63	1.14	0.22	-0.01

CES DECKA OUTBACK 75S  
 SFL SFL SLC SUE 325P  
 RWG WAR ADMIRAL 2528  
 PHG ALLSTAR A71

MCFG 94X  
 BEAS 7084T  
 RWG TOTALLY-EXPOSED 7918 ET  
 RWG ROXY KITTY 5030

Act. BW **83**

Adj. WW **931**

Adj. YW **1456**

The most ideal and complete son of RWG Horsepower H311, absolutely no surprise here as his dam is the most influential cow in our breeding program and is the highest revenue donor dam. Every year she lands another set of ET and natural progeny that surpass her. The true testament to a great donor! Yes, Yes, Yes, we absolutely walked this Jr. sire on a top notch group of females and we expect big things from that group spring of 2025. We love his mass, structural correctness, shape and real industry relevant traits, like being big bodied but easy fleshing, muscular but still offering improved IMF, growth and power that pay bills for everyday ranchers. He will leave a set of daughters with desirable teat and udder quality. An awesome disposition, and "Momma cow money maker" fertility! For the EPD guys, his genomic values tell you a lot and for the rest of us cattlemen his pedigree tells us everything we need to know and seeing the bull validates it all. RWG Liquor Talking L468 is the sire that can make a huge mark in industry and we wanna help accomplish that with our new partners Feb 11.



Lot 54

## RWG Long Burn L477 ET

RWG L477 - 04/29/2023 - CDGV184864 - Homo Polled - PB94 - Red

CED	BW	WW	YW	Milk	TM	CEM	STAY	DOC
14	0.1	63	98	24	56	8	10	12

Act. BW 93

Adj. WW 683

Adj. YW 1192



GRAND DAM



SIRE

SIRE FRL FIR RIVER HELLFIRE 701H ET  
FRL FIR RIVER DRAGON  
SLC REBA 112Y

DAM JRI SECRETARIAT 285E78  
RWG KITTY H444  
RWG KITTY E411

SLC OUTBACK 89Y  
FRL FIR RIVER MS CLASS  
SLC ROY BEAN 141U  
SLC PAM 81U

JRI SECRET SENSATION 140A43  
JRI MS PRIME STAR 285Z68  
RWG BUSTIN' STONES 4603  
RWG ROXY KITTY X 0301

YG	CW	REA	MARB	FAT
-0.17	30	0.61	0.17	-0.03

RWG Long Burn L477 ET is the result of our ET program as we consistently add new genetics to help maximize value for our customer base. We had seen "Hellfire" progeny before we used him and were confident in a couple select matings. RWG Long Burn L477 is from a multi-generation donor branch of the Kitty cow family and one of our absolute favorite Kitty 7411 daughters. We feel strongly that RWG Long Burn L477 will offer his sires added stoutness, power and shear mass while blending some added calving ease and smoothness in design. His flush mate sister is one of our favorite bred heifers and we're excited to see her in production. New sire line backed by generations of predictability from the "Kitty cow family".



Lot 55

## RWG Lose It L478

RWG L478 - 04/29/2023 - CDGV184454 - Homo Polled - PB94 - Hetro Black

CED	BW	WW	YW	Milk	TM	CEM	STAY	DOC
17	-0.4	67	103	24	57	9	16	13

Act. BW 93

Adj. WW 808

Adj. YW 1341



GRAND DAM

SIRE DVE LONESOME CAIRO 230H  
DVE DAVIDSON MAC 111C  
DRT LONESOME DANIELLE 150F

DAM JRI SECRETARIAT 285E78  
RWG KITTY H444  
RWG KITTY E411

PHG BLACK MAC Z13  
DVE DAVIDSON MS NAVAHO 56A  
DVE DAVIDSON SAM 16D  
DRT LONESOME GOOD TIME GIRL

JRI SECRET SENSATION 140A43  
JRI MS PRIME STAR 285Z68  
RWG BUSTIN' STONES 4603  
RWG ROXY KITTY X 0301

YG	CW	REA	MARB	FAT
-0.17	17	0.50	0.38	-0.02

RWG Lose it L478 is the natural calf from the RWG Kitty H444 donor, I won't lie, when we made this mating we were really hoping to make a daughter. But RWG Lose it L478 is a darn good version of what Cairo progeny can provide, he's long clean in design, lots of added shape, great structured and foot size. He's a great option for mature well developed heifers or any set of females that can maximize added calving ease, reduced BW and positive growth. His breed leading, quality grade and economic traits are just the icing on the top and should not be over looked.







Lot 56

## RWG Laramie L481 ET

RWG L481 - 04/30/2023 - CDGV184841 - Homo Polled - PB94 - Black

CED	BW	WW	YW	Milk	TM	CEM	STAY	DOC
10	2.1	77	119	24	62	7	13	13

Act. BW 94

Adj. WW 844

Adj. YW 1318

SIRE JRI HOSS 293A43 ET  
**JRI GUNG HO 282C51**  
 JRI MS FRANKIE 282R11

JRI POP A TOP 197T83  
 JRI MS PROFIT AGENT 293R3  
 JRI EXTRA EXPOSURE 285L71 ET  
 JRI MS NEW & IMPROVED 282L9

DAM RWG EXACT COMBINATION E409  
**RWG GLAMOROUS KITTY G415 ET**  
 RWG KITTY'S DREAM D526

RWG RIGHT COMBINATION C506  
 RWG HADIE 3505  
 BEAS BEAS 2806Z  
 RWG ROXY KITTY X 030I



SIRE

YG	CW	REA	MARB	FAT
-0.15	32	0.67	-0.10	-0.01

RWG Laramie L481 ET here's an ET bull that just flat out impresses me every time I walk the bull pen. Big, stout, hairy, sound structured, soft on the ground. Factor in the breeding consistency and value of his sire Gung Ho and pair that with the elite production of his Donor dam RWG Glamours Kitty G415 and you have a home run mating. Our extensive ET program is always based around building the absolute best female base we can and maximizing great pedigrees. His ET full sister is right at the top of the replacement pen, his dam absolutely nailed it in 2024 weaning a standout red bull calf. RWG Laramie L481 is one of the elite bulls in the offering, sell home run sets of sons from him and keep the daughters as they will be ideal sized, easy keeping and bring home extra pounds every fall.



Lot 57

## RWG Lost Time L502 ET

RWG L502 - 05/02/2023 - CDGV184839 - Homo Polled - PB94 - Black

CED	BW	WW	YW	Milk	TM	CEM	STAY	DOC
10	3.0	74	100	22	58	6	12	14

Act. BW 96

Adj. WW 829

Adj. YW 1255

SIRE FRL FIR RIVER DRAGON  
**FRL FIR RIVER HELLFIRE 70IH ET**  
 SLC REBA 112Y

SLC OUTBACK 89Y  
 FRL FIR RIVER MS CLASS  
 SLC ROY BEAN 14IU  
 SLC PAM 8IU

DAM RWG EXACT COMBINATION E409  
**RWG GLAMOROUS KITTY G415 ET**  
 RWG KITTY'S DREAM D526

RWG RIGHT COMBINATION C506  
 RWG HADIE 3505  
 BEAS BEAS 2806Z  
 RWG ROXY KITTY X 030I



SIRE

YG	CW	REA	MARB	FAT
-0.20	31	0.61	0.05	-0.04

RWG Lost Time L502 ET patterns so much like his maternal brothers, but without a doubt has that kick of extra hair from his sire Hellfire. All kinds of power, length, growth & performance built into this son of RWG Glamorous Kitty G415. She's a powerfully constructed donor, and a no miss female. When looking to add genetics that crush scales at weaning time and make exceptional high growth feeder cattle that the market demands, utilize and maximize this Hellfire son in that role and he can easily be one of the most profitable sires in the offering.



GRAND DAM



Lot 58

## RWG Landmark L505

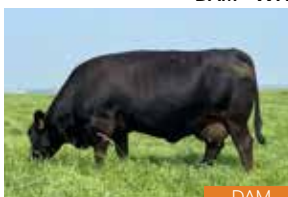
RWG L505 - 05/03/2023 - CDGV184436 - Homo Polled - PB94 - Black

CED	BW	WW	YW	Milk	TM	CEM	STAY	DOC
9	0.1	53	81	19	45	3	18	11

Act. BW 83

Adj. WW 656

Adj. YW 1171



DAM

SIRE **BLB BLB GOODVIEW JETSON 124J**  
SLC OUTBACK 142X  
DDN BELLY RIVER FANCY 8138F

DAM **RWG GOODNIGHT DENVER D701**  
RWG ALBERTA GOLD 3541  
RWG YOUR GOODNIGHT 1539

CES DECKA OUTBACK 75S  
SFL SFL SLC SUE 325P  
DDN DRIVER 133D  
DDN 36D

LCR WARNOCK 612W  
RWG TOUCH 9111  
RWG TEXAS WORTH 9223  
ULL TWILIGHT 5T ET

YG	CW	REA	MARB	FAT
-0.19	29	0.57	0.15	-0.04

RWG Landmark L505, here's a clean, sharp son of Jetson from one of our programs most underrated mature females. RWG Goodnight D701 is a tank, flat out awesome teat and udder, great structure and has raised multiple great sons through our sale. They always offer reduced BW, great natural muscle and turn out to be some of the best breeding and longest lasting. We always hear report back on how good the daughters are off her sons. Our "Goodnight" cow family is very strong and Keston proudly showed RWG Goodnight L415 who won Canadian National Jr Champion female, Reserve Grand National Champion Female & Grand Champion Junior Beef extreme. Just to mention a few of her accomplishments, it's a strong cow family. RWG Landmark L505 is a great version of what his elite sire BLB Jetson 124J can add to a breeding program. Don't overlook one of the best structured bulls in the offering, with lots of added calving ease.



Lot 59

## RWG Loki L511

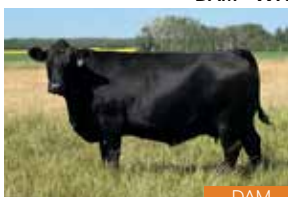
RWG L511 - 05/11/2023 - CDGV184821 - Homo Polled - PB94 - Homo Black

CED	BW	WW	YW	Milk	TM	CEM	STAY	DOC
8	2.9	77	116	20	58	6	13	15

Act. BW 95

Adj. WW 777

Adj. YW 1284



DAM

SIRE **RWG HORSE POWER H311**  
SLC OUTBACK 142X  
RWG ALLSTAR D510

DAM **RWG LORA H467**  
JRI HALLELUJAH 246E50  
RWG LORA E307 ET

CES DECKA OUTBACK 75S  
SFL SFL SLC SUE 325P  
RWG WAR ADMIRAL 2528  
PHG ALLSTAR A71

JRI SECRET POWERS 254C821  
JRI MS HONEY 246Z10  
DCSF POST ROCK ASTRONAUT 157A  
SLC LORA 164Y

YG	CW	REA	MARB	FAT
-0.16	28	0.68	0.04	-0.01

RWG Loki L511, we absolutely appreciate the substance, hair, soft, soggy made package. RWG Loki L511 is also a chill personality in the bull pen. He's a direct Horsepower son that's got that stamped touch of added bone and shear mass that stamps the look of high quality feeder cattle that grow and finish. His dam is a top notch young Lora female that's constantly at the front of our conversations about the next generation of leading mature females that could or should enter the donor pen. She is a tank, a big centered cow that's easy keeping with strong maternal traits.







## RWG Linkin Park L514

RWG L514 - 05/16/2023 - CDGVI83451 - Homo Polled - PB94 - Black

CED	BW	WW	YW	Milk	TM	CEM	STAY	DOC
17	-1.1	58	69	26	55	9	20	11

Act. BW 78

Adj. WW 862

Adj. YW 1287

**SIRE** DVE DAVIDSON MACON IIIIC  
**DRT LONESOME CAIRO 230H**  
DRT LONESOME DANIELLE 150F

PHG BLACK MAC Z13  
DVE DAVIDSON MS NAVAHO 56A  
DVE DAVIDSON SAM 16D  
DRT LONESOME GOOD TIME GIRL

**DAM** RWG GRAND PLAN G420 ET  
**RWG PARKLAND J435**  
SLC SLC PARKLAND 31E ET

RWG EXACT COMBINATION E409  
RWG KITTY'S DREAM D526  
VV ZAKE 114Z  
SLC PARKLAND 220U



SIRE



DAM

YG	CW	REA	MARB	FAT
-0.29	10	0.72	0.09	-0.03

RWG Linkin Park L514 is the moderate framed, refined structured heifer bull deluxe. His Dam was our Sr. champion female both at Farm Fair and Agribition and backed by the great Parkland cow family. She's an RWG Grandplan 9420 ET daughter. Grandplan has done a phenomenal job after being a previous high seller through this sale. He offers reduced BW, added growth and yet excellent maternal characteristics. Cross that with the calving ease and reduced BW of Cairo and you got a great heifer bull prospect. Use with confidence to have a great calving season and don't be shy to keep back daughters for replacements.



## RWG Light Show L521

RWG L521 - 05/28/2023 - CDGVI84453 - Homo Polled - PB94 - Black

CED	BW	WW	YW	Milk	TM	CEM	STAY	DOC
9	1.4	65	89	25	57	5	18	8

Act. BW 89

Adj. WW 846

Adj. YW 1198

**SIRE** SLC OUTBACK 142X  
**BLB BLB GOODVIEW JETSON 124J**  
DDN BELLY RIVER FANCY 8138F

CES DECKA OUTBACK 75S  
SFL SFL SLC SUE 325P  
DDN DRIVER 133D  
DDN 36D

**DAM** RWG BLOWIN' MINDS 4402  
**RWG HADIE H429 ET**  
RWG HADIE 3505

BEAS BEAS 2806Z  
RWG ZEE KITTY 2534  
RWG XTREME TRACTION 0521  
RWG YES HADIE 1508

YG	CW	REA	MARB	FAT
-0.16	30	0.58	0.04	-0.02

RWG Light Show L521 is a Jetson son with all of daddy's structural softness and is very correct, nice head shape, clean and long bodied. He's a great site prospect that does so many of the little important details right. He will float right down the middle leaving you with cattle that thrive in the ranching environment, as they will be the right mature size and efficient but will have adequate performance. The daughters will have extra milk and quality of production. We are very excited about our young Jetson females and think highly of their futures. Powerful maternal genetics, that pack some added muscle mass and solid structure.



# RWG Frozen Genetics

EMBRYOS FOR SALE ON THESE, ALONG WITH OTHER LEADING DONORS BY PRIVATE TREATY YEAR ROUND!











2025 *Draft Picks* BULL SALE



**RETURN ADDRESS:**

Royal Western Gelbvieh  
35347 Range Road 270  
Red Deer, Alberta  
T4G 0C9



RETURN POSTAGE GUARANTEED  
PORT DE RETOUR GARANTI



NRCS

If you wish to stop receiving The Draft Pick Bull Sale catalogue, or would like to update addresses, please email [tanyahollman@hotmail.com](mailto:tanyahollman@hotmail.com) or text Tanya at 403-352-9283.