

**29TH ANNUAL
MAKIN' THE GRADE
BULL SALE**



NOVEMBER 29th, 2025
DLMS FARMGATE TIMED AUCTIONS

BENCHMARKANGUS.COM





Friends and Fellow Cattlemen,

With our serious storm last year and loss of calves, and with a pending postal strike, plus with very limited time on one's hand, we are presenting a scaled down sale book, compared to other years.

2025 saw wonderful rain during July resulting in a great grass year. Gonna need some snow and run-off as the dugouts are on their 'last legs'.

Whoever thought we would see \$10 light calves with five weight calves well over \$7 and bred heifers over \$6,000. This year has truly been a windfall for the cow-calf producer.

We were concerned these high prices would result in a slowdown with our meat business but demand continues to be strong for Benchmark® Beef.

We welcome your visit to view the bulls. You will not be disappointed. Over half the bulls qualify as heifer bulls with 90% of the bulls expressing significant end product merit.

Mike and I could not do all this alone, Lane carries the load at the ranch and his untiring efforts are so very much appreciated.

The Benchmark® Team of Producers are top notch cattlemen producing the right kind, a big thank you to all of them!

Let's revel in the market that we have been blessed with and shore up our genetics that will stand the test of time.

Sincerely from the Benchmark® team,

Doug 403-892-4755

Mike 403-394-4903

Lane 403-308-4131

29TH ANNUAL MAKIN' THE GRADE BULL SALE



The Munton Family



Val and Doug Munton



*Mike, Daicya, Lincoln and
Lexington*



Lane Doud



Coby Stuart



Johan Fehr



ONLINE SALE BY DLMS FARM GATE TIMED AUCTIONS

ON OFFER

27 coming Two-Year-Old Black Angus Bulls

16 coming Two-Year-Old Red Angus Bulls

Sale Day Phones

Doug Munton (403) 892-4755

Mike Munton (403) 394-4903

Mark Shologan (780) 699-5082

Lane Doud (403) 308-4131

Cattle available at the ranch for viewing
November 17th -29th.

Semen Interest Retained Benchmark ®
Angus retains a one-half semen interest
in every bull selling.



Timed Auctions Made Easy

POST SALE

Free feed until December 31, 2024.

Feed at \$3 per day after year end.

Bulls left at the Ranch MUST be insured

STAY CONNECTED

Doug and Mike Munton

Box 997, Lethbridge, AB T1J 4A2

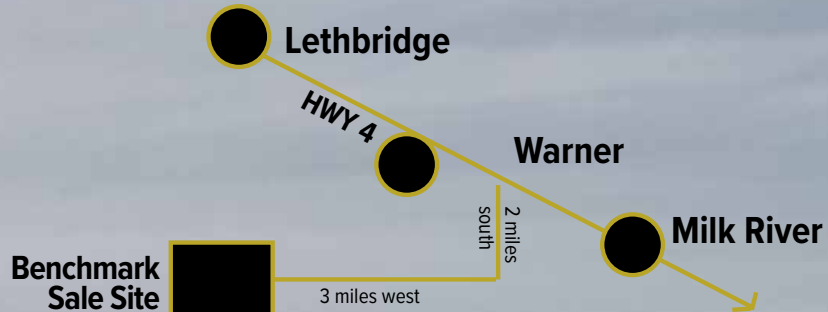
Phone: (403) 892-4755

Cell: (403) 394-4903

Email: doug@muntonco.com

See Catalogue online at

www.benchmarkangus.com



HOW THE SALE WORKS!

RACEHORSE STYLE SALE WITH EXTENDED BIDDING.

First 30 min of Extended Bidding clock adds - 5 Minutes to close
Second 30 min of Extended Bidding clock adds - 3 Minutes to close
After an Hour of Extended Bidding clock adds - 1 Minute to close



LOCATION:

*Preview cattle
November 16 - 30,
at Warner, go west down
Main Street, past the school
and at T intersection, turn left
and go two miles south, then
right and go three miles west.*

1. Visit <https://farmgatetimedauctions.ca>, click the LOGIN/REGISTRATION button. First time users will select the REGISTER button from this page. Fill out the registration form to sign up for a free user account and it allows you to select a username and password for use on all Farm Gate Timed auctions. This program will send you text and email messages whenever there is activity on your favorite lots or someone challenges your proxy bid and this is why you will be asked for both your current email and cell phone number. If you are a past participant in the Farm Gate Timed auctions simply enter your user name and pass word to continue. This takes you to a list of both current and upcoming Farm Gate Auctions.

2. You can choose your favourite lots in this sale at this time and the program will allow you to open either all sale lots or just your favorite lots on your screen. Any time there is active bidding on a lot you have identified on your favorite list you will get a text and/or an email noting this activity.

3. The program allows you to place a proxy bid on any sale lot. This in fact protects your interest in any lot of interest for you to a specified dollar value you set, when you may not be able to give 100% attention to the sale. If the lot has a \$2000 bid on it and you place a proxy bid of \$3500 into the system, the computer will bid \$2100 for you but if some one else bids \$2200, the computer will again bid for you, this time at \$2300. The system will look after your interest to a maximum of \$3500. If another bidder is on at \$3600, your proxy will no longer be effective and you will no longer have the winning bid on this lot without once again logging in and bidding again or moving your attention to a second lot of interest.

4. At Closing time of the sale the entire sale will extend bidding for 5 minute if a bid is placed on any lot in the sale. Any bid received after 7 PM will extend the sale by 5 minutes from the time of that bid. When no bidding occurs for 5 min the computer will declare the sale finished.

5. Within 24 hours of the sale close the Sale consignor will contact all winning bidders to arrange payment, transfer of pedigrees and delivery/Pick up of your lot.

If you require assistance with using the new DLMS Farm Gate web site, if you don't understand how to create a favorites list, if you can't figure out the proxy bid or you just plain want to bid via phone, please talk to any of the DLMS team or Sale Consignors.

More Info:

What is Racehorse Style Close?

Racehorse style sale close is when the entire sale stays open in extended bidding. This type of sale allows you as the bidder to change to a different lot within the same sale if the bidding has gone into extended bidding.

How will Extended Bidding work?

When we get to the close out end time the clock for close extends with any bid placed with less than 5 min on the clock. This type of extended bidding turns the end time to more of a soft time. Extended bidding allows bidders to compete in lots like a real auction and give all bidders the same time to make a decision. Always follow the clock to see how much time remains in the sale you are interested in.



Welcome to the Benchmark Angus Bull Sale

As we welcome you to this year's Benchmark Angus Bull Sale, we recognize that the cattle industry stands at a pivotal point. National cow herd numbers remain tight, creating opportunity and optimism for producers positioned to capitalize. Beef prices have remained incredibly strong, driven by high demand both domestically and abroad, and the market continues to reward quality. We see this every single week.

In this environment and every cattle environment, genetic decisions matter more than ever. Do we want to produce a product that a consumer is frustrated to purchase because of cost? Or do we want to exceed the customers eating expectations; I will take the later, makes the repeat customer, which we all want and need in the business of feeding the world.

At Benchmark Angus, our commitment is to provide bulls that go beyond just paper and performance—we're focused on building bulls that work hard, last long, and leave a lasting impact on your program. Whether you're targeting premiums on a grid, increasing weaning weights, improving fertility, or simply producing the kind of calves that buyers fight for—our bulls are built for it. And to put on top of it all; if you choose, you have us as a valued partner to purchase your cattle and take them directly to the consumer.

We breed with purpose: soundness, maternal strength, carcass quality, and docility are not optional—they're expected. Each Benchmark Angus bull is backed by generations of selection pressure for real-world performance, ensuring that when they go to work in your pastures, they deliver results you can see and dollars you can count.

As cattle supplies stay limited and beef prices hold strong, now is the time to invest in genetics that move your herd forward. We thank you for considering Benchmark Angus as your source for the next generation of herd sires. We look forward to helping you find the bull that will make your cattle better—and your beef product even more valuable. As we say we are "Engineering Superior Beef", and we can only do that with wonderful partners such as yourself, feeding the county the country and the world.

Thank you for your interest and your trust in our program.

– The Benchmark Angus Team





1 BENCHMARK VECTOR 20'24

Bull BFL 20M | April 16 2024 | 2385414



PERFORMANCE				EPD'S			
AOD	BW	205D	365D	CE	BW	WW	YW
2	75	616	1174	+12.0	+0.0	+59	+109

OCTOBER 2025 EPD RANKING:				
MARB	BW	YW	RIBEYE	WW
Top 1%	Top 15%	Top 30%	Top 35%	Top 35%

CARCASS EPD'S	ACTUAL
MARB +1.95	%IMF 9.96
REA +0.61	REA 1.28
CW +40	RIB FAT 0.42
FAT +0.054	LMY 60.5%

MILL BRAE IDENTIFIED 4031
HPCA VERACIOUS
H P C A SUNRISE A246
Sire: **BENCHMARK VECTOR 17'22 (2276289)**
G A R EARLY BIRD
CHAIR ROCK EARLY BIRD 6063
CHAIR ROCK SURE FIRE 4058

G A R ASHLAND
BENCHMARK ASHLAND 229'18
G A R ANTICIPATION N506
Dam: **BENCHMARK ESTER 105'22 (2299307)**
G A R BASELINE AB297
BENCHMARK ESTER 52'16
BENCHMARK ESTER 862

LOT 1 is Lane's pick of the bulls. A heifer bull from a two year old, by Ashland. Note the % IMF scan and marbling EPD.

2 BENCHMARK VECTOR 23'24

Bull BFL 23M | April 17 2024 | 2385416

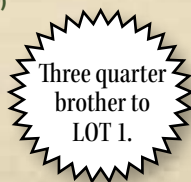


CARCASS EPD'S	ACTUAL
MARB +1.58	%IMF 6.65
REA +0.69	REA 1.18
CW +48	RIB FAT 0.30
FAT +0.029	LMY 63.2%

MILL BRAE IDENTIFIED 4031
HPCA VERACIOUS
H P C A SUNRISE A246
Sire: **BENCHMARK VECTOR 17'22 (2276289)**
G A R EARLY BIRD
CHAIR ROCK EARLY BIRD 6063
CHAIR ROCK SURE FIRE 4058
G A R ASHLAND
BENCHMARK ASHLAND 229'18
G A R ANTICIPATION N506
Dam: **BENCHMARK LUCY 210'22 (2295140)**
BENCHMARK MICAH 247'13
BENCHMARK LUCY 53'16
BENCHMARK LUCY 09

PERFORMANCE				EPD'S			
AOD	BW	205D	365D	CE	BW	WW	YW
2	82	685	1279	+6.0	+3.4	+66	+119

OCTOBER 2025 EPD RANKING:			
MARB	YW	WW	RIBEYE
Top 1%	Top 15%	Top 20%	Top 25%



Herdsire of Lots 1 to 5
BENCHMARK VECTOR 17'22

3

BENCHMARK VECTOR 31'24

Bull BFL 31M | April 20 2024 | 2385421

**CARCASS
EPD'S**

MARB

+1.80

REA

+0.52

CW

+44

FAT

+0.050

ACTUAL

%IMF

7.10

REA

1.11

RIB FAT

0.30

LMY

61.3%

MILL BRAE IDENTIFIED 4031
HPCA VERACIOUS
H P C A SUNRISE A246
Sire: **BENCHMARK VECTOR 17'22** (2276289)
G A R EARLY BIRD
CHAIR ROCK EARLY BIRD 6063
CHAIR ROCK SURE FIRE 4058
G A R QUANTUM
BENCHMARK QUANTUM 185'19
G A R ANTICIPATION N1647
Dam: **BENCHMARK RITA 141'22 DDF** (2290538)
G A R DAYBREAK 6860 DDC
BENCHMARK RITA 25'14 DDC
BENCHMARK RITA 40'112

PERFORMANCE				EPD'S			
AOD	BW	205D	365D	CE	BW	WW	YW
2	88	584	1148	+6.0	+3.1	+64	+118

OCTOBER 2025 EPD RANKING:

MARB	YW	CE
Top 1%	Top 15%	Top 25%

From a Quantum two year old featuring another great marbling scan and marbling EPD.



4

BENCHMARK VECTOR 104'24

Bull BFL 104M | May 10 2024 | 2399296

**CARCASS
EPD'S**

MARB

+1.56

REA

+0.38

CW

+54

FAT

+0.081

ACTUAL

%IMF

7.19

REA

1.00

RIB FAT

0.42

LMY

58.3%

MILL BRAE IDENTIFIED 4031
HPCA VERACIOUS
H P C A SUNRISE A246
Sire: **BENCHMARK VECTOR 17'22** (2276289)
G A R EARLY BIRD
CHAIR ROCK EARLY BIRD 6063
CHAIR ROCK SURE FIRE 4058
G A R INERTIA
BENCHMARK INERTIA 186'19
G A R ANTICIPATION 1124
Dam: **BENCHMARK BLACKCAP 157'22** (2291620)
BRUIN BENZ 5361
BENCHMARK BLACKCAP 96'19
BENCHMARK BLACKCAP 226'14

PERFORMANCE				EPD'S			
AOD	BW	205D	365D	CE	BW	WW	YW
2	83	726	1291	+9.0	+1.8	+73	+126

OCTOBER 2025 EPD RANKING:

MARB	MILK	WW	YW	CE	CW
Top 1%	Top 5%	Top 7%	Top 8%	Top 10%	TOP 20%

From an Inertia two year old who did a great job.

Doug's pick of the bulls!

COLLEGE Ford Lincoln 403.329.0333
3975 1 Ave South, Lethbridge
SALES · SERVICE · PARTS

YOUR TRUCK SUPERSTORE

BUILT Ford TOUGH

COLLEGE Ford TABER 403 223-9654
9 4402 46 Ave, Taber

Sales Parts Service

2020 Ford Ranger



5

BENCHMARK VECTOR 168'24



Bull BFL 168M | May 29 2024 | 2399303

CARCASS EPD'S

MARB	+1.05
REA	+0.69
CW	+42
FAT	+0.022

ACTUAL

%IMF	2.89
REA	1.15
RIB FAT	0.24
LMY	63.3%

MILL BRAE IDENTIFIED 4031
HPCA VERACIOUS
H P C A SUNRISE A246
Sire: **BENCHMARK VECTOR 17'22** (2276289)
G A R EARLY BIRD
CHAIR ROCK EARLY BIRD 6063
CHAIR ROCK SURE FIRE 4058
G A R SURE FIRE
H P C A CAN'T MISS M17
MLC RITA 4142
Dam: **BENCHMARK ELBINA 70'22** (2291746)
G A R INNOVATION 3002G
BENCHMARK ELBINA 38'16
BENCHMARK ELBINA 938

PERFORMANCE				EPD'S			
AOD	BW	205D	365D	CE	BW	WW	YW
2	83	659	1148	+8.0	+1.9	+55	+97

OCTOBER 2025 EPD RANKING:

MARB	CE	MCE	RIBEYE
Top 5%	Top 15%	Top 20%	Top 25%

BALOG AUCTION SERVICES INC.

EXPERIENCE - ENTHUSIASM - INTENSITY - ABILITY
LETHBRIDGE, AB

Over 40 Years!
OF SERVING AGRICULTURAL PRODUCERS
IN WESTERN CANADA!

GIVE US A CALL FOR ALL YOUR LIVESTOCK, MACHINERY & REAL ESTATE REQUIREMENTS.

BALOG AUCTION

403-320-1980

WEBSITE: WWW.BALOGAUCTION.COM
EMAIL: SOLD@BALOGAUCTION.COM



**AGRICULTURE IS THE
ONLY BUSINESS THERE IS.
FOR OUR AG TEAM ANYWAY.**

See what's possible when you have a dedicated team of ag experts on your side. And a full suite of financial solutions for agriculture.

atb.com/agriculture



POWERING
POSSIBILITY



6 BENCHMARK QUANTUM 108'24

Bull BFL 108M | May 11 2024 | 2387155



PERFORMANCE				EPD'S			
AOD	BW	205D	365D	CE	BW	WW	YW
4	85	733	1284	+9.0	+1..2	+75	+130

CARCASS EPD'S	ACTUAL
MARB +1.62	%IMF 7.55
REA +0.92	REA 1.29
CW +59	RIB FAT 0.51
FAT +0.065	LMY 59.0%

G A R MOMENTUM
G A R QUANTUM
G A R IN SURE 1524
Sire: **BENCHMARK QUANTUM 185'19 (2173115)**
G A R ANTICIPATION
G A R ANTICIPATION N1647
G A R TRUST N1223
G A R PROPHET A011 DDF
BENCHMARK PREMIUM 2'15
G A R COMPLETE 1381
Dam: **BENCHMARK WENDY 18'20 (2159370)**
BENCHMARK GENESIS 202'15
BENCHMARK WENDY 129'18
BENCHMARK WENDY 49'15

OCTOBER 2025 EPD RANKING:						
MARB	RIBEYE	WW	YW	MILK	CW	CE
Top 1%	Top 4%	Top 5%	Top 6%	Top 7%	Top 10%	Top 10%

From a Premium daughter, Premium a bull we sold to Cee Jay Bee. He left some very nice females for ust to work with. This guy checks off a lot of the boxes. Very nice Marb Scan and Special Ribeye of 1.29 sq. in. per 100 lbs of body weight

7 BENCHMARK QUANTUM 131'24

Bull BFL 131M | May 16 2024 | 2387165



CARCASS EPD'S	ACTUAL
MARB +0.97	%IMF 3.20
REA +0.96	REA 1.25
CW +66	RIB FAT 0.29
FAT +0.011	LMY 64.0%

G A R MOMENTUM
G A R QUANTUM
G A R IN SURE 1524
Sire: **BENCHMARK QUANTUM 185'19 (2173115)**
G A R ANTICIPATION
G A R ANTICIPATION N1647
G A R TRUST N1223
G A R PROPHET
G A R PROPHET A011
G A R 1407 NEW DESIGN 3064
Dam: **BENCHMARK LADY HEATHER 140'16 (1899380)**
GAR INGENUITY J2024
BENCHMARK LADY HEATHER 132'14
BENCHMARK LADY HEATHER 141'11

PERFORMANCE				EPD'S			
AOD	BW	205D	365D	CE	BW	WW	YW
8	100	695	1256	+2.0	+4.4	+76	+136

OCTOBER 2025 EPD RANKING:				
RIBEYE	CW	WW	YW	MARB
Top 3%	Top4%	Top 4%	Top 4%	Top 6%



Herdsire of Lots 6 to 10
BENCHMARK QUANTUM 185'19

The dam here, has a son at Bar X and daughter working at Benchmark®. LOT 7 will give you calves that will gain and grade.

8

BENCHMARK QUANTUM 140'24

ANGUS

Bull BFL 140M | May 20 2024 | 2387169

**CARCASS
EPD'S**

MARB	+1.04
REA	+0.71
CW	+71
FAT	+0.033

ACTUAL

%IMF	3.70
REA	1.03
RIB FAT	0.29
LMY	62.5%

G A R MOMENTUM
G A R QUANTUM
G A R IN SURE 1524
Sire: **BENCHMARK QUANTUM 185'19** (2173115)
G A R ANTICIPATION
G A R ANTICIPATION N1647
G A R TRUST N1223
V A R GENERATION 2100
EF PRIME QUARTER 5369
EF RITA 3422
Dam: **BENCHMARK NALIE 37'19** (2106052)
B C LOOKOUT 7024
BENCHMARK NALIE 2'11
JOHNSTON MAX TRADITION 884C

PERFORMANCE				EPD'S			
AOD	BW	205D	365D	CE	BW	WW	YW
5	93	648	1351	+5.0	+3.4	+81	+150

OCTOBER 2025 EPD RANKING:

YW	WW	CW	MARB	RIBEYE
Top 1%	Top 2%	Top 2%	Top 5%	Top 20%

A full brother works for our dear friend John Smith at Plateau Cattle. We love feeding his calves. And a daughter of 37'19 works at Benchmark*. Note the yield on these Quantum sons.

9

BENCHMARK QUANTUM 150'24

ANGUS

Bull BFL 150M | May 23 2024 | 2387172

**CARCASS
EPD'S**

MARB	+1.40
REA	+0.92
CW	+61
FAT	-0.008

ACTUAL

%IMF	5.29
REA	1.21
RIB FAT	0.31
LMY	62.3%

G A R MOMENTUM
G A R QUANTUM
G A R IN SURE 1524
Sire: **BENCHMARK QUANTUM 185'19** (2173115)
G A R ANTICIPATION
G A R ANTICIPATION N1647
G A R TRUST N1223
G A R PROPHET
BENCHMARK TENDER BEEF 11'17
BENCHMARK QUEEN 259'14
Dam: **BENCHMARK MISS TNR BEEF 10'20** (2165798)
G A R NEW DESIGN 5050
G A R 5050 NEW DESIGN 2132
G A R OBJECTIVE 2670

PERFORMANCE				EPD'S			
AOD	BW	205D	365D	CE	BW	WW	YW
4	95	619	1182	+4.0	+2.8	+73	+130

OCTOBER 2025 EPD RANKING:

MARB	RIBEYE	YW	WW	CW
Top 1%	Top 4%	Top 6%	Top 7%	Top 8%

From a Tender Beef daughter, the bull we own with Basin Angus.

10

BENCHMARK QUANTUM 156'24

ANGUS

Bull BFL 156M | May 25 2024 | 2387176

**CARCASS
EPD'S**

MARB	+1.67
REA	+0.75
CW	+64
FAT	+0.021

ACTUAL

%IMF	7.78
REA	1.11
RIB FAT	0.27
LMY	63.0%

G A R MOMENTUM
G A R QUANTUM
G A R IN SURE 1524
Sire: **BENCHMARK QUANTUM 185'19** (2173115)
G A R ANTICIPATION
G A R ANTICIPATION N1647
G A R TRUST N1223
V A R GENERATION 2100
EF PRIME QUARTER 5369
EF RITA 3422
Dam: **BENCHMARK ELBINA 101'19** (2105640)
G A R BASELINE AB297
BENCHMARK ELBINA 25'16
BENCHMARK ELBINA 821

PERFORMANCE				EPD'S			
AOD	BW	205D	365D	CE	BW	WW	YW
5	65	703	1241	+15.0	-1.6	+75	+129

OCTOBER 2025 EPD RANKING:

MARB	CE	BW	WW	CW	YW	RIBEYE
Top 1%	Top 1%	Top 3%	Top 5%	Top 5%	Top 6%	Top 20%

Great Scan, Great Growth and check the Birth Weight! Gain and Grade for sure.

Creating more value together


HI-RANGE*

Beef mineral program for every season and life stage



Complete feed, supplement, premix options



Optimized with
IntelliBond®
a Solis product

trouwnutrition.ca

BJ Scheirlinck
Beef Sales Representative
403 915 8193

trouw nutrition
a Nutreco company



11

BENCHMARK HOME TOWN 7'24



Bull BFL 7M | April 09 2024 | 2385399

CARCASS EPD'S

MARB
+1.59
REA
+0.90
CW
+41
FAT
+0.012

ACTUAL

%IMF
3.32
REA
1.29
RIB FAT
0.25
LMY
64.4%

G A R ASHLAND
G A R HOME TOWN
CHAIR ROCK SURE FIRE 6095
Sire: **BENCHMARK HOME TOWN 27'22 (2274791)**
G A R EARLY BIRD
CHAIR ROCK EARLY BIRD 6063
CHAIR ROCK SURE FIRE 4058

G A R INERTIA
G A R INERTIA 200J
CHAIR ROCK SURE FIRE 7020
Dam: **BENCHMARK LADY EILEENE 95'22 (2290468)**
BENCHMARK TENDER BEEF 11'17
BENCHMARK LADY EILEENE 12'19
BENCHMARK LADY EILEENE 14'17

PERFORMANCE				EPD'S			
AOD	BW	205D	365D	CE	BW	WW	YW
2	82	592	1161	+11.0	+0.9	+54	+107

OCTOBER 2025 EPD RANKING:

MARB	CE	RIBEYE	MILK
Top 1%	Top 4%	Top 5%	Top 20%

From a real nice Inertiia two year old.

12

BENCHMARK HOME TOWN 11'24



Bull BFL 11M | April 11 2024 | 2399286

CARCASS EPD'S

MARB
+1.43
REA
+0.89
CW
+40
FAT
-0.01

ACTUAL

%IMF
5.67
REA
1.32
RIB FAT
0.19
LMY
66.4%

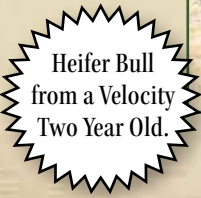
G A R ASHLAND
G A R HOME TOWN
CHAIR ROCK SURE FIRE 6095
Sire: **BENCHMARK HOME TOWN 27'22 (2274791)**
G A R EARLY BIRD
CHAIR ROCK EARLY BIRD 6063
CHAIR ROCK SURE FIRE 4058

BRIDGES VELOCITY
G A R VELOCITY W507
G A R OBJECTIVE A706
Dam: **BENCHMARK ELBINA 59'22 (2292030)**
G A R BASELINE AB297
BENCHMARK ELBINA 28'16
BENCHMARK ELBINA 839

PERFORMANCE				EPD'S			
AOD	BW	205D	365D	CE	BW	WW	YW
2	71	638	1167	+15.0	-0.9	+54	+105

OCTOBER 2025 EPD RANKING:

MARB	CE	RIBEYE	MILK	BW
Top 1%	Top 1%	Top 5%	Top 5%	Top 5%



Herd sire of Lots 11 to 14
BENCHMARK HOME TOWN 27'22

13 BENCHMARK HOME TOWN 19'24

Bull BFL 19M | April 15 2024 | 2385413



CARCASS EPD'S	ACTUAL
MARB +1.66	%IMF 5.54
REA +0.87	REA 1.21
CW +40	RIB FAT 0.21
FAT +0.018	LMY 64.7%

G A R ASHLAND
G A R HOME TOWN F
CHAIR ROCK SURE FIRE 6095
Sire: **BENCHMARK HOME TOWN 27'22 (2274791)**
G A R EARLY BIRD
CHAIR ROCK EARLY BIRD 6063
CHAIR ROCK SURE FIRE 4058
G A R QUANTUM
BENCHMARK QUANTUM 185'19
G A R ANTICIPATION N1647
Dam: **BENCHMARK MISS QUANTUM 13'22 (2274795)**
G A R ANTICIPATION
G A R ANTICIPATION 125
G A R PROPHET 982

PERFORMANCE				EPD'S			
AOD	BW	205D	365D	CE	BW	WW	YW
2	82	580	1155	+12.0	+0.0	+55	+113

OCTOBER 2025 EPD RANKING:				
MARB	DOC	CE	RIBEYE	BW
Top 1%	Top 2%	Top 3%	Top 7%	Top 15%

Heifer Bull with great Carcass & Growth Projection,
Checkout the yield on this guy!

14 BENCHMARK GOALKEEPER 5'24

Bull BFL 5M | April 06 2024 | 2385397



CARCASS EPD'S	ACTUAL
MARB +0.73	%IMF 3.17
REA +0.79	REA 1.26
CW +50	RIB FAT 0.30
FAT -0.018	LMY 64.8%

SYDGEN ENHANCE
BALDRIDGE SR GOALKEEPER
BALDRIDGE ISABEL E030
Sire: **BENCHMARK GOALKEEPER 19'22 (2274846)**
G A R ANTICIPATION
G A R ANTICIPATION N506
G A R CONTRAST L234
G A R PHOENIX
BENCHMARK PHOENIX 26'20
G A R 5050 NEW DESIGN 2132
Dam: **BENCHMARK BELLE 197'22 (2290553)**
G A R BASELINE AB297 DDF
BENCHMARK BELLE 180'19
BENCHMARK BELLE 250'16

PERFORMANCE				EPD'S			
AOD	BW	205D	365D	CE	BW	WW	YW
2	71	576	1123	+11.0	+0.2	+68	+123

OCTOBER 2025 EPD RANKING:						
CE	DOC	YW	BW	WW	MARB	RIBEYE
Top 4%	Top 8%	Top 10%	Top 15%	Top 15%	Top 15%	Top 15%



Herd sire of Lots 14 to 18
BENCHMARK GOALKEEPER 19'22

Heifer Bull with terrific Lean Meat
Yield. The sire of the dam is
phenotypically at the top of the list.
Working at Dave Michaluk, Keg River.

PERFORMANCE SEED

Premium Forage Seed Mixtures

OUR FOCUS IS FORAGE

Annual Forage for Soil Regeneration

Truly Innovative Forage

RESEARCH | RELATIONSHIPS | RESULTS

1-888-808-2898 • www.performanceseed.ca

Grain Seeding

Corn Planting

Packing & Bagging

KEN SLINGERLAND
403-382 8815
slcattle02@gmail.com

Silaging: Alfalfa, Barley, Wheat, Corn



15 BENCHMARK GOALKEEPER 25'24

Bull BFL 25M | April 18 2024 | 2387149



PERFORMANCE				EPD'S			
AOD	BW	205D	365D	CE	BW	WW	YW
2	84	678	1151	+6.0	+2.4	+80	+135

OCTOBER 2025 EPD RANKING:				
WW	YW	MARB	CW	RIBEYE
Top 2%	Top 4%	Top 9%	Top 25%	Top 30%

Top Growth Projections with decent carcass EPD's

CARCASS EPD'S	ACTUAL
MARB +0.85	%IMF 4.44
REA +0.64	REA 1.27
CW +52	RIB FAT 0.31
FAT +0.067	LMY 62.6%

SYDGEN ENHANCE
BALDRIDGE SR GOALKEEPER
BALDRIDGE ISABEL E030
Sire: **BENCHMARK GOALKEEPER 19'22 (2274846)**
G A R ANTICIPATION
G A R ANTICIPATION N506
G A R CONTRAST L234
MILL BRAE IDENTIFIED 4031
H P C A IDENTIFIED 80
G A R PROPHET 2984
Dam: **BENCHMARK TIBBIE D 185'22 (2290488)**
BRUIN BENZ 5361
BENCHMARK TIBBIE D 142'20
BENCHMARK TIBBIE D 69'17

16 BENCHMARK GOALKEEPER 32'24

Bull BFL 32M | April 21 2024 | 2385422



PERFORMANCE				EPD'S			
AOD	BW	205D	365D	CE	BW	WW	YW
3	70	643	1197	+12.0	-0.7	+68	+123

OCTOBER 2025 EPD RANKING:					
CE	MARB	RIBEYE	BW	YW	WW
Top 3%	Top 6%	Top 6%	Top 7%	Top 10%	Top 15%

A real nice blending of genetics, blending Enhance, Confidence Plus, Ashland and Anticipation. Great Lean Meat Yield with an actual Ribeye Measurement of 16.06 sq. inches.

CARCASS EPD'S	ACTUAL
MARB +0.98	%IMF 3.80
REA +0.88	REA 1.34
CW +47	RIB FAT 0.32
FAT +0.027	LMY 63.5%

SYDGEN EXCEED 3223
SYDGEN ENHANCE
SYDGEN RITA 2618
Sire: **BALDRIDGE SR GOALKEEPER (2239206)**
CONNEALY CONFIDENCE PLUS
BALDRIDGE ISABEL E030
BALDRIDGE ISABEL Y69
G A R ASHLAND
BENCHMARK ASHLAND 229'18
G A R ANTICIPATION N506
Dam: **BENCHMARK MISS ASHLAND 186'21 (2217449)**
G A R ANTICIPATION
G A R ANTICIPATION 1124
G A R IN SURE N1362 DDF

Sire:
**BALDRIDGE SR
GOALKEEPER**

17 BENCHMARK GOALKEEPER 49'24



Bull BFL 49M | April 26 2024 | 2399291

CARCASS EPD'S	ACTUAL
MARB +1.08	%IMF 5.65
REA +0.59	REA 1.14
CW +59	RIB FAT 0.27
FAT +0.060	LMY 63.1%

SYDGEN ENHANCE
BALDRIDGE SR GOALKEEPER
BALDRIDGE ISABEL E030
Sire: **BENCHMARK GOALKEEPER 19'22** (2274846)
G A R ANTICIPATION
G A R ANTICIPATION N506
G A R CONTRAST L234
G A R INERTIA DWF AMF CAF M1F
BENCHMARK INERTIA 186'19
G A R ANTICIPATION 1124
Dam: **BENCHMARK BELLE 158'22** (2295159)
EF PRIME QUARTER 5369
BENCHMARK BELLE 181F
BENCHMARK BELLE 250'16

PERFORMANCE				EPD'S			
AOD	BW	205D	365D	CE	BW	WW	YW
2	80	644	1219	+6.0	+2.6	+76	+136

OCTOBER 2025 EPD RANKING:			
MARB	WW	YW	CW
Top 4%	Top 4%	Top 4%	Top 15%



A really good bull here featuring
Goalkeeper, Inertia, and Prime Quarter.



18 BENCHMARK GOALKEEPER 90'24



Bull BFL 90M | May 07 2024 | 2386732

CARCASS EPD'S	ACTUAL
MARB +0.90	%IMF 4.15
REA +0.51	REA 1.15
CW +61	RIB FAT 0.34
FAT +0.047	LMY 62.2%

SYDGEN ENHANCE
BALDRIDGE SR GOALKEEPER
BALDRIDGE ISABEL E030
Sire: **BENCHMARK GOALKEEPER 19'22** (2274846)
G A R ANTICIPATION
G A R ANTICIPATION N506
G A R CONTRAST L234
K C F BENNETT SOUTHSIDE
K C F BENNETT THEROCK A473
K C F MISS PROTEGE W148 NHF
Dam: **BENCHMARK MISS COMPLETE 6'18**
G A R BASELINE AB297 DDF
BENCHMARK MISS COMPLETE 159'16
G A R COMPLETE 1381

PERFORMANCE				EPD'S			
AOD	BW	205D	365D	CE	BW	WW	YW
6	99	678	1316	+4.0	+4.1	+78	+149

OCTOBER 2025 EPD RANKING:					
YW	WW	DOC	MARB	CW	RADG
Top 1%	Top 3%	Top 4%	Top 8%	Top 8%	Top 10%



The Rock dam has a son at Vince Stevenson's and a daughter in the herd. Big growth projections on this guy.



19 BENCHMARK QUALIFIED 13'24

Bull POKE 13M | April 12 2024 | 2387182



CARCASS EPD'S
MARB
+0.83
REA
+0.51
CW
+51
FAT
+0.053

ACTUAL
%IMF
4.79
REA
1.12
RIB FAT
0.34
LMY
61.6%

BASIN PAYWEIGHT 006S
BASIN PAYWEIGHT 1682
21AR O LASS 7017
Sire: **BENCHMARK QUALIFIED 23'19 (2105625)**
WR JOURNEY-1X74
BENCHMARK LASSIE 20'17
BENCHMARK LASSIE 62'15
G A R SURE FIRE
H P C A CAN'T MISS M17
MLC RITA 4142 DDF
Dam: **BENCHMARK BELLE 45'22 (2300076)**
BENCHMARK MIDLAND 753
BENCHMARK BELLE 118'15
BENCHMARK BELLE 4225

PERFORMANCE				EPD'S			
AOD	BW	205D	365D	CE	BW	WW	YW
2	74	667	1288	+9.0	+0.6	+70	+127

OCTOBER 2025 EPD RANKING:				
DOC	YW	CE	WW	MARB
Top 6%	Top 8%	Top 10%	Top 10%	Top 10%

Qualified 23'19 was our top bull for RFI of the 2019 bulls. He had a 77 lb BW with a 205D of 628 lbs and a 365D of 1370 lbs. Lot 19 will give you calves that gain and grade.

20 BENCHMARK QUALIFIED 16'24

Bull BFL 16M | April 14 2024 | 2385409



CARCASS EPD'S
MARB
+0.99
REA
+0.51
CW
+44
FAT
+0.027
ACTUAL
%IMF
4.82
REA
1.21
RIB FAT
0.28
LMY
62.8%

BASIN PAYWEIGHT 006S
BASIN PAYWEIGHT 1682
21AR O LASS 7017
Sire: **BENCHMARK QUALIFIED 23'19 (2105625)**
WR JOURNEY-1X74
BENCHMARK LASSIE 20'17
BENCHMARK LASSIE 62'15
G A R PROPHET
BENCHMARK MICAH 247'13
G A R COMPLETE 1381
Dam: **BENCHMARK LADY EILEENE 32'18 (2029703)**
BENCHMARK ABERDEEN 188'12
BENCHMARK LADY EILEENE 109'15
BENCHMARK LADYEILEENMERE 52'13

PERFORMANCE				EPD'S			
AOD	BW	205D	365D	CE	BW	WW	YW
6	83	641	1154	+8.0	+1.0	+69	+117

OCTOBER 2025 EPD RANKING:				
MILK	MARB	CE	WW	YW
Top 3%	Top 6%	Top 15%	Top 15%	Top 20%

The dam 32'18 by Micah haas a Phoenix son at Rocky P Ranch. Justin's calves calves 'Make the Grade.'

21 BENCHMARK IDENTIFIED 106'24

Bull BFL 106M | May 10 2024 | 2387153



CARCASS EPD'S
MARB
+1.06
REA
+0.53
CW
+62
FAT
+0.042
ACTUAL
%IMF
3.60
REA
1.07
RIB FAT
0.18
LMY
64.7%

KOUPALS B&B IDENTITY
MILL BRAE IDENTIFIED 4031
MILL BRAE PRO BLACKCAP 1092
Sire: **H P C A IDENTIFIED 80 (2203391)**
G A R PROPHET
G A R PROPHET 2984
G A R DAYBREAK 1521
BASIN PAYWEIGHT 006S
BASIN PAYWEIGHT 1682 SS 7017
Dam: **BENCHMARK MISS PAYMASTER 8'21 (2221050)**
G A R ANTICIPATION
G A R ANTICIPATION N506
G A R CONTRAST L234

PERFORMANCE				EPD'S			
AOD	BW	205D	365D	CE	BW	WW	YW
3	88	709	1226	+4.0	+2.4	+82	+134

OCTOBER 2025 EPD RANKING:			
WW	YW	MARB	CW
Top 2%	Top 4%	Top 4%	Top 7%

The dam here has a daughter retained and a real nice Goalkeeper bull calf at side. Very nice momma cow!



22 BENCHMARK SUPREME 39'24 ANGUS

Bull BFL 39M | April 12 2024 | 2399289

CARCASS EPD'S	ACTUAL
MARB +1.45	%IMF 6.13
REA +0.11	REA 1.04
CW +32	RIB FAT 0.38
FAT +0.069	LMY 58.9%

G A R MOMENTUM
G A R TRANSCENDENT
G A R PROPHET 2685
Sire: **BENCHMARK SUPREME 188'21 (2244264)**
G A R SURE FIRE
G A R SURE FIRE 465
G A R 28 AMBUSH 1682
BASIN PAYWEIGHT 1682
BRUIN BENZ 5361
BRUIN 6759 FOREVER LADY 3327
Dam: **BENCHMARK PRIDE 92'20 (2159404)**
G A R PROPHET A011
BENCHMARK PRIDE 149'16
BENCHMARK PRIDE 80'14

PERFORMANCE				EPD'S			
AOD	BW	205D	365D	CE	BW	WW	YW
4	76	628	1185	+13.0	-0.7	+58	+104

OCTOBER 2025 EPD RANKING:				
MARB	MCE	CE	BW	MILK
Top 1%	Top 1%	Top 2%	Top 7%	Top 7%

Supreme 188'21 came in dam with a cow purchased from Gardiner Angus Ranch in Kansas. Sure Fire 465 is a very moderate, productive female.

23 BENCHMARK SUPREME 40'24 ANGUS

Bull BFL 40M | April 22 2024 | 2404789

CARCASS EPD'S	CARCASS EPD'S
MARB +1.51	MARB +1.51
REA +0.45	REA +0.45
CW +30	CW +30
FAT +0.021	FAT +0.021

G A R MOMENTUM
G A R TRANSCENDENT
G A R PROPHET 2685
Sire: **BENCHMARK SUPREME 188'21 (2244264)**
G A R SURE FIRE DWF
G A R SURE FIRE 465
G A R 28 AMBUSH 1682
V A R GENERATION 2100
EF PRIME QUARTER 5369
EF RITA 3422 DDF
Dam: **BENCHMARK BLACK LASS 123'19 (2105438)**
TRIARA MADE TO ORDER 366Y
BENCHMARK BLACK LASS 4'14
BENCHMARK BLACK LASS 9121

PERFORMANCE				EPD'S			
AOD	BW	205D	365D	CE	BW	WW	YW
5	83	625	1104	+11.0	+0.6	+59	+100

OCTOBER 2025 EPD RANKING:		
MARB	MCE	CE
Top 1%	Top 2%	Top 4%

From a real nice Prime Quarter dam with two daughters retained.



Herd sire of Lots 22 to 24
BENCHMARK SUPREME 188'21

24 BENCHMARK SUPREME 136'24



Bull BFL 136M | May 17 2024 | 2399297

CARCASS EPD'S
MARB
+0.85
REA
+0.70
CW
+37
FAT
-0.008

ACTUAL
%IMF
3.27
REA
1.19
RIB FAT
0.25
LMY
63.7%

G A R MOMENTUM
G A R TRANSCENDENT
G A R PROPHET 2685
Sire: **BENCHMARK SUPREME 188'21 (2244264)**
G A R SURE FIRE
G A R SURE FIRE 465
G A R 28 AMBUSH 1682

SYDGEN TRUST 6228
G A R INNOVATION 3002G
GOODE MANDATE 1751
Dam: **BENCHMARK ERELITE 100'18 (2029763)**
ALC BIG EYE D09N
BENCHMARK ERELITE 042
BENCHMARK ERELITE 6225

PERFORMANCE				EPD'S			
AOD	BW	205D	365D	CE	BW	WW	YW
6	93	646	1186	+6.0	+3.4	+62	+105

OCTOBER 2025 EPD RANKING:

MCE	MILK	MARB
Top 6%	Top 7%	Top 9%

Note Erelite 042 is designated Elite by Cdn. Assoc. These bulls by Supreme have great Lean Meat Yield

25 BENCHMARK SATURN 35'24



Bull BFL 35M | April 22 2024 | 2385423

CARCASS EPD'S
MARB
+1.82
REA
+0.90
CW
+57
FAT
+0.072
ACTUAL
%IMF
7.07
REA
1.21
RIB FAT
0.45
LMY
58.7%

G A R SUNRISE
G A R SUNBEAM
G A R INGENUITY 3132
Sire: **G A R SUNBEAM J9257 (2203392)**
G A R DRIVE
MAPLECREST RITA 7166
MAPLECREST RITA 5179

G A R SURE FIRE 6404
GB FIREBALL 672
GB ANTICIPATION 432
Dam: **BENCHMARK ERELITE 60'21 (2217290)**
G A R BASELINE AB297
BENCHMARK ERELITE 63'19
BENCHMARK ERELITE 56'15

PERFORMANCE				EPD'S			
AOD	BW	205D	365D	CE	BW	WW	YW
3	77	624	1176	+10.0	+1.5	+73	+131

OCTOBER 2025 EPD RANKING:

MARB	MCE	RIBEYE	YW	CE	WW	CW
Top 1%	Top 3%	Top 5%	Top 5%	Top 6%	Top 7%	Top 15%

We lost the sire J9257 before we could walk him but had drawn semen prior. He brings a maternal aspect to the table. The dam here is a daughter of the infamous Fireball. Lot 25 does it all!

"Hay, Forage and Material Handling Experts"



Nobleford • Olds • Ponoka

www.nobleequipment.ca 1-877-490-3020



26

BENCHMARK WAMPUM 189'24

Bull BFL 189M | June 09 2024 | 2390030

ANGUS



Herd sire of Lot 23
WOODHILL WAMPUM

CARCASS**EPD'S**MARB
+1.01REA
+0.96CW
+67FAT
+0.013**ACTUAL**%IMF
3.19REA
1.13RIB FAT
0.27LMY
63.9%

G A R ASHLAND
G A R HOME TOWN
CHAIR ROCK SURE FIRE 6095
Sire: **WOODHILL WAMPUM (2257233)**
CONNEALY CONFIDENCE PLUS
CHERNE EVERGREEN D380-G316
CHERNE EVERGREEN X353-D380

G A R ASHLAND
BENCHMARK ASHLAND 229'18
G A R ANTICIPATION N506
Dam: **BENCHMARK SALLY 27'21 (2217353)**
G A R INNOVATION 3002G
BENCHMARK SALLY 24'18
BENCHMARK SALLY 63'13

PERFORMANCE				EPD'S			
AOD	BW	205D	365D	CE	BW	WW	YW
3	71	656	1318	+15.0	-1.4	+74	+145

OCTOBER 2025 EPD RANKING:

CE	YW	CW	BW	RIBEYE	MARB	WW
Top 1%	Top 2%	Top 3%	Top 3%	Top 3%	Top 5%	Top 6%

A Heifer Bull that checks all the boxes.

27

BENCHMARK DUAL THREAT 17'24

Bull BFL 17M | April 14 2024 | 2385410

ANGUS



Herd sire of Lot 26
G A R DUAL THREAT

CARCASS**EPD'S**MARB
+0.91REA
+0.82CW
+48FAT
+0.048**ACTUAL**%IMF
4.25REA
1.25RIB FAT
0.29LMY
63.1%

CONNEALY IN SURE 8524
G A R SURE FIRE
CHAIR ROCK 5050 G A R 8086 DDC
Sire: **G A R DUAL THREAT**
MCC DAYBREAK
G A R DAYBREAK A3010
G A R 5050 NEW DESIGN A91

G A R SURE FIRE
H P C A CAN'T MISS M17
MLC RITA 4142 DDF
Dam: **BENCHMARK CAN'T MISS 158'21 (2231998)**
G A R NEW DESIGN 5050
G A R 5050 NEW DESIGN 2132
G A R OBJECTIVE 2670 DDC

PERFORMANCE				EPD'S			
AOD	BW	205D	365D	CE	BW	WW	YW
3	69	612	1164	+14.0	-1.1	+55	+104

OCTOBER 2025 EPD RANKING:

CE	BW	MILK	MARB	RIBEYE
Top 1%	Top 5%	Top 5%	Top 8%	Top 10%

The sire Dual Threat is a Select Sires Roster Bull. Bringing ease of calving, top end growth and top end carcass merit. Lot 27 carries the same genetic merit.

**We
Can...**



Burdett, Alberta

Cell: (403) 382-7895 • Phone: (403) 833-3766 • Fax: (403) 833-3706

D & S INSURANCE SERVICES**JON MCKENZIE**

304 - 2 STREET, P.O. BOX 357, WARNER, AB. T0K2L0

Telephone: (403) 642-2032 Fax: (403) 642-2112

E-MAIL: jon@dsinsuranceservices.ca

Toll Free in Alberta: 1-888-488-0188

FOR ALL YOUR INSURANCE NEEDS
FARM • HOME • AUTO • TRAVEL • LIVESTOCK • EQUINE • HAIL

28 RED BENCHMARK FOR PROFIT 28M

Bull BFR 28M | May 02 2024 | 2404787

CARCASS EPD'S

MARB
+0.67

REA
+0.32

CW
+19

FAT
+0.001

ACTUAL

%IMF
3.40

REA
1.18

RIB FAT
0.29

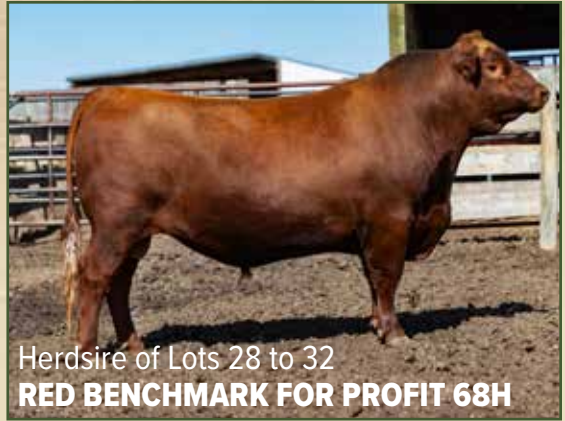
LMY
62%

RED H2R PROFITBUILDER B403
RED LIKE IT PROFIT BUILDER 7215E
RED TBJR REBELLA 409
Sire: **RED BENCHMARK FOR PROFIT 68H (2159491)**
RED BENCHMARK GRAND CANYON 816
RED BENCHMARK QUEEN 28'11
RED QUEEN OF BENCHMARK 984
RED BROWN PHENOMENAL Z7310
RED BROWN BLW FANTASTIC C5959
RED BROWN MS P707 Y6648
Dam: **RED BENCHMARK FIREFLY 8H (2159548)**
RED LSF MEW PLATINUM 5660C
RED BENCHMARK FIREFLY 106E
RED BENCHMARK FIREFLY 65'12

PERFORMANCE				EPD'S			
AOD	BW	205D	365D	CE	BW	WW	YW
4	89	548	1125	+6.0	+0.4	+43	+88

OCTOBER 2025 EPD RANKING:

MARB	MILK	YW
Top 2%	Top 8%	Top 20%



Herd sire of Lots 28 to 32
RED BENCHMARK FOR PROFIT 68H

This is the last year for sons of 68H. He has left progeny that gain and grade with daughters that get the job done.



29 RED BENCHMARK FOR PROFIT 45M

Bull BFR 45M | May 09 2024 | 2398817

CARCASS EPD'S

MARB
+0.53

REA
+0.45

CW
+39

FAT
-0.034

ACTUAL

%IMF
3.10

REA
1.05

RIB FAT
0.23

LMY
63.6%

RED H2R PROFITBUILDER B403
RED LIKE IT PROFIT BUILDER 7215E
RED TBJR REBELLA 409
Sire: **RED BENCHMARK FOR PROFIT 68H (2159491)**
RED BENCHMARK GRAND CANYON 816
RED BENCHMARK QUEEN 28'11
RED QUEEN OF BENCHMARK 984
RED BIEBER DEEP END B597
RED LAUBACH DEEP END 7047
RED LAUBACH JODI 9018
Dam: **RED BENCHMARK DURUBA 75H (2159534)**
RED DUNN BETTER A500
RED BENCHMARK DURUBA 29'17
RED BENCHMARK DURUBA 28'12

PERFORMANCE				EPD'S			
AOD	BW	205D	365D	CE	BW	WW	YW
4	82	703	1274	+7.0	+0.6	+59	+105

OCTOBER 2025 EPD RANKING:

YW	MARB	WW
Top 5%	Top 5%	Top 6%

From a Deep End dam that did an amazing job.
Lot 29 will give you calves that will gain and grade.



30 RED BENCHMARK FOR PROFIT 64M

Bull BFR 64M | May 19 2024 | 2398825

CARCASS EPD'S	ACTUAL
MARB +0.55	%IMF 3.05
REA +0.58	REA 1.12
CW +44	RIB FAT 0.27
FAT -0.030	LMY 63.7%

RED H2R PROFITBUILDER B403
RED LIKE IT PROFIT BUILDER 7215E
RED TBJR REBELLA 409
Sire: **RED BENCHMARK FOR PROFIT 68H (2159491)**
RED BENCHMARK GRAND CANYON 816
RED BENCHMARK QUEEN 28'11
RED QUEEN OF BENCHMARK 984
RED 3JG-MEW GRIDIRON 806U
RED LSF MEW GAME CHANGER 1613Y
RED MEW ELIZABETH 710T
Dam: **RED BENCHMARK TILDA 24'14 (1777813)**
RED 5L TRAVLIN EXP 1892-6295
RED TILDA OF BENCHMARK 857
RED TILDA OF BENCHMARK 68

PERFORMANCE				EPD'S			
AOD	BW	205D	365D	CE	BW	WW	YW
10	94	719	1319	--1.0	+2.8	+66	+120

OCTOBER 2025 EPD RANKING:					
YW	WW	MARB	CW	RIBEYE	MILK
Top 1%	Top 2%	Top 4%	Top 5%	Top 20%	Top 20%

Lane's pick of the Red's and I would agree. This guy is a tank and his calves for sure will weigh up and grade when hung up. The dam has stood the test of time.



Embryo Transfer Services
IVF

Certified for Exportable Embryo Production
Export Qualified Semen Collection and Bull Stud
Owner's Use Semen
Embryo & Semen Storage & Distribution

Ph: 587.887.1934
Email: embryos@bowvalleygenetics.com
Web: www.bowvalleygenetics.com

OUR READERS ARE YOUR CUSTOMERS!

Your advertising expenditure is reaching a potential bull buyer!



- No wasted circulation to farm homes NOT in the beef business
- Delivered by addressed mail ONLY
- Well-read and respected publications!

Call 403-250-1090 or visit beefnews.com for more information.



31 RED BENCHMARK FOR PROFIT 72M

Bull BFR 72M | May 20 2024 | 2398829

CARCASS EPD'S
MARB
+0.87
REA
+0.44
CW
+34
FAT
-0.018

ACTUAL
%IMF
3.80
REA
1.09
RIB FAT
0.23
LMY
63.4%

RED H2R PROFITBUILDER B403
RED LIKE IT PROFIT BUILDER 7215E
RED TBJR REBELLA 409
Sire: **RED BENCHMARK FOR PROFIT 68H (2159491)**
RED BENCHMARK GRAND CANYON 816
RED BENCHMARK QUEEN 28'11
RED QUEEN OF BENCHMARK 984
RED BASIN EXT 5233
RED BASIN EXT 45T5
BASIN ROSE 710P
Dam: **RED BENCHMARK RUTH ANN 61'13 (1731168)**
RED BAR-E-L NATURAL 44N
RED BAR-X EVITA 5R
RED BAR-X EVITA 1000 29N

PERFORMANCE				EPD'S			
AOD	BW	205D	365D	CE	BW	WW	YW
11	95	718	1201	+0.0	+2.0	+54	+89

OCTOBER 2025 EPD RANKING:				
MARB	MILK	WW	YW	CW
Top 1%	Top 8%	Top 15%	Top 20%	Top 20%

The dam has sons at Kootney River Ranch and Willm's Seeds with three daughters retained at Bendhmark*. Remember 45T5 sired the Grand Champion Bull at Denver a few years back.

32 RED BENCHMARK FOR PROFIT 77M

Bull BFR 77M | May 26 2024 | 2398832

CARCASS EPD'S
MARB
+0.71
REA
-0.14
CW
+10
FAT
+0.028

ACTUAL
%IMF
3.61
REA
0.98
RIB FAT
0.41
LMY
56.5%

RED H2R PROFITBUILDER B403
RED LIKE IT PROFIT BUILDER 7215E
RED TBJR REBELLA 409
Sire: **RED BENCHMARK FOR PROFIT 68H (2159491)**
RED BENCHMARK GRAND CANYON 816
RED BENCHMARK QUEEN 28'11
RED QUEEN OF BENCHMARK 984
RED LSF MEW GAME CHANGER 1613Y
RED BENCHMARK TRANSITION 10'14
RED BENCHMARK LANA 60'11
Dam: **RED BENCHMARK VIRGINIA 63'17 (1961754)**
RED BASIN EXT 45T5
RED BENCHMARK VIRGINIADOLL 36'11
RED BENCHMARK VIRGINIADOLL 848

PERFORMANCE				EPD'S			
AOD	BW	205D	365D	CE	BW	WW	YW
7	89	588	1063	+4.0	+0.7	+41	+74

OCTOBER 2025 EPD RANKING:	
MARB	MILK
Top 1%	Top 15%

Virginia 63'17 has a daughter in production at Benchmark* and a son at Springhill Cattle Co.

33

RED BENCHMARK PRIME RIB 21M**Bull** BFR 21M | April 27 2024 | 2383838**CARCASS****EPD'S**

MARB
+0.46
REA
+0.98
CW
+48
FAT
-0.068

ACTUAL

%IMF
2.91
REA
1.19
RIB FAT
0.12
LMY
67.9%

RED LSF MEW X-FACTOR 6693D
 RED LSF SRR PRIME FACTOR 9014G
 RED LSF SRR RAINDANC A3045
Sire: RED LSF SRR PRIME RIB 1290J (2261343)
 RED BROWN ORACLE B112
 RED LSF SRR LARKABA E7602 G9137
 RED LSF SRR LARKABA Z2200 E7602
 RED BIEBER DEEP END B597
 RED LAUBACH DEEP END 7047
 RED LAUBACH JODI 9018
Dam: RED BENCHMARK FAYETTE 21'19 (2105183)
 RED DUNN BETTER A500
 RED BENCHMARK FAYETTE 38'15
 RED BENCHMARK FAYETTE 15'12

PERFORMANCE				EPD'S			
AOD	BW	205D	365D	CE	BW	WW	YW
5	94	647	1267	+4.0	+1.8	+67	+122

OCTOBER 2025 EPD RANKING:

RIBEYE	WW	YW	CW	MARB
Top 1%	Top 1%	Top 1%	Top 3%	Top 8%

Top Growth here with exceptional ribeye projection and check the Lean Meat Yield!

34

RED BENCHMARK PRIME RIB 30M**Bull** BFR 30M | May 03 2024 | 2398816**CARCASS****EPD'S**

MARB
+0.24
REA
+0.84
CW
+40
FAT
-0.064

ACTUAL

%IMF
2.07
REA
1.21
RIB FAT
0.15
LMY
65.9%

RED LSF MEW X-FACTOR 6693D
 RED LSF SRR PRIME FACTOR 9014G
 RED LSF SRR RAINDANC A3045
Sire: RED LSF SRR PRIME RIB 1290J (2261343)
 RED BROWN ORACLE B112
 RED LSF SRR LARKABA E7602 G9137
 RED LSF SRR LARKABA Z2200 E7602
 RED BROWN PHENOMENAL Z7310
 RED BROWN BLW FANTASTIC C5959
 RED BROWN MS P707 Y6648
Dam: RED BENCHMARK COCOA 1'19 (2105165)
 RED BIEBER MAKIN HAY 9913
 RED BENCHMARK COCOA 4'17
 RED BENCHMARK COCOA 20'15

PERFORMANCE				EPD'S			
AOD	BW	205D	365D	CE	BW	WW	YW
5	92	620	1120	+9.0	-0.3	+57	+99

OCTOBER 2025 EPD RANKING:

RIBEYE	MILK	WW	YW
Top 2%	Top 8%	Top 8%	Top 8%

Amazing Lean Meat Yield! If you are finishing your calves take a look here!

35

RED BENCHMARK PRIME RIB 46M**Bull** BFR 46M | May 09 2024 | 2398818**CARCASS****EPD'S**

MARB
+0.38
REA
+0.93
CW
+49
FAT
-0.026

ACTUAL

%IMF
2.57
REA
1.24
RIB FAT
0.28
LMY
64.1%

RED LSF MEW X-FACTOR 6693D
 RED LSF SRR PRIME FACTOR 9014G
 RED LSF SRR RAINDANC A3045
Sire: RED LSF SRR PRIME RIB 1290J (2261343)
 RED BROWN ORACLE B112
 RED LSF SRR LARKABA E7602 G9137
 RED LSF SRR LARKABA Z2200 E7602
 BROWN INCREDABULL Z7277
 RED LSF MEW PLATINUM 5660C OSF
 BROWN MS NEW STANDARD A7053
Dam: RED BENCHMARK SUNFLOWER 107E (1999509)
 RED BASIN EXT 45T5 AMF NHF OSF MAF
 RED BENCHMARK SUNFLOWER 20'14
 RED BENCHMARK SUNFLOWER 8118

PERFORMANCE				EPD'S			
AOD	BW	205D	365D	CE	BW	WW	YW
7	92	706	1256	+7.0	+0.6	+68	+117

OCTOBER 2025 EPD RANKING:

RIBEYE	WW	YW	CW	MARB
Top 1%	Top 1%	Top 1%	Top 3%	Top 15%

These Prime Rib son's will add weaning weight and then perform in the feedlot. Needing some muscle in your cattle, take a look at the ribeye numbers.

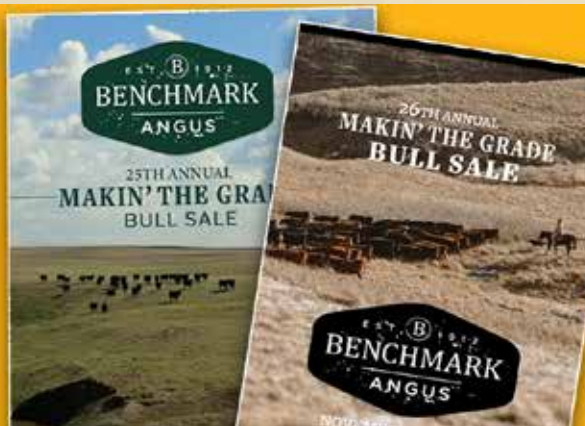


Herd sire of Lots 33 to 38
RED LSF SRR PRIME RIB 1290J

KENDRA DESIGN INC**GRAPHIC DESIGN**

ads, logos, brochures, annual reports,
BULL SALE CATALOGUES and more!

kendradesign@gmail.com • 780-623-2387
 kendradesign.mypportfolio.com





36 RED BENCHMARK PRIME RIB 55M

Bull BRL 55M | May 12 2024 | 2398821

CARCASS EPD'S	ACTUAL
MARB +0.17	%IMF 1.62
REA +1.06	REA 1.26
CW +46	RIB FAT 0.22
FAT -0.043	LMY 65.8%

RED LSF MEW X-FACTOR 6693D
RED LSF SRR PRIME FACTOR 9014G
RED LSF SRR RAINDANC A3045
Sire: **RED LSF SRR PRIME RIB 1290J (2261343)**
RED BROWN ORACLE B112
RED LSF SRR LARKABA E7602 G9137
RED LSF SRR LARKABA Z2200 E7602

RED BROWN PHENOMENAL Z7310
RED LASO FRONT ROW X37D
RED FEDDES FRONTLINE Y33-8265
RED FEDDES BLOCKANA Y33
Dam: **RED BENCHMARK VIRGINIA 42H (2159537)**
RED LSF RAB COMMITMENT 2792Z
RED BENCHMARK VIRGINIA 32'17
RED BENCHMARK VIRGINIADOLL 050

PERFORMANCE				EPD'S			
AOD	BW	205D	365D	CE	BW	WW	YW
4	82	717	1248	+7.0	+0.2	+60	+102

OCTOBER 2025 EPD RANKING:				
RIBEYE	CW	WW	MILK	YW
Top 1%	Top 4%	Top 5%	Top 5%	Top 6%

Great weaning weight and yearling weight with added muscle.
Check the Lean Meat Yield!

37 RED BENCHMARK PRIME RIB 69M

Bull BFR 69M | May 17 2024 | 2398828

CARCASS EPD'S
MARB +0.33
REA +0.87
CW +55
FAT -0.011
ACTUAL
%IMF 2.49
REA 1.17
RIB FAT 0.27
LMY 64.0%

RED LSF MEW X-FACTOR 6693D
RED LSF SRR PRIME FACTOR 9014G
RED LSF SRR RAINDANC A3045
Sire: **RED LSF SRR PRIME RIB 1290J (2261343)**
RED BROWN ORACLE B112
RED LSF SRR LARKABA E7602 G9137
RED LSF SRR LARKABA Z2200 E7602

RED BIEBER DEEP END B597
RED LAUBACH DEEP END 7047
RED LAUBACH JODI 9018
Dam: **RED BENCHMARK VIRGINADOL 32'19 (2112366)**
RED DUNN BETTER A500
RED BENCHMARK VIRGINADOL 43'15
RED BENCHMARK VIRGINIADOL13'12

PERFORMANCE				EPD'S			
AOD	BW	205D	365D	CE	BW	WW	YW
5	92	763	1288	+5.0	+0.7	+69	+117

OCTOBER 2025 EPD RANKING:					
WW	YW	CW	RIBEYE	MILK	MARB
Top 1%	Top 1%	Top 1%	Top 2%	Top 8%	Top 25%

The dam 32'19 is designated Elite and has a son at Janke Ranches.
Again, great Gain and Grow in the Prime Rib son.

38 RED BENCHMARK PRIME RIB 73M

Bull BFR 73M | May 20 2024 | 2398830

CARCASS EPD'S
MARB +0.30
REA +1.19
CW +51
FAT -0.061
ACTUAL
%IMF 2.35
REA 1.20
RIB FAT 0.23
LMY 65.7%

RED LSF MEW X-FACTOR 6693D
RED LSF SRR PRIME FACTOR 9014G
RED LSF SRR RAINDANC A3045
Sire: **RED LSF SRR PRIME RIB 1290J (2261343)**
RED BROWN ORACLE B112
RED LSF SRR LARKABA E7602 G9137
RED LSF SRR LARKABA Z2200 E7602

RED BIEBER DEEP END B597
RED LAUBACH DEEP END 7047
RED LAUBACH JODI 9018
Dam: **RED BENCHMARK LAKIMA 44H (2159526)**
RED HXC CONQUEST 4405P
RED BENCHMARK LAKIMA 20'16
RED BENCHMARK LAKIMA 17'14

PERFORMANCE				EPD'S			
AOD	BW	205D	365D	CE	BW	WW	YW
4	81	700	1328	+10.0	-0.6	+65	+117

OCTOBER 2025 EPD RANKING:						
RIBEYE	YW	WW	CW	CE	BW	MARB
Top 1%	Top 1%	Top 2%	Top 2%	Top 6%	Top 20%	Top 30%

Special 365 D weight on Lot 38, with extra special muscle having a
16 sq. in. ribeye on scanning.

39 RED BENCHMARK GENUINE 11M

Bull BFR 11M | April 13 2024 | 2383830

CARCASS EPD'S

MARB
+0.85

REA
+0.29

CW
+22

FAT
+0.007

ACTUAL

%IMF
3.58

REA
1.16

RIB FAT
0.18

LMY
64%

RED 5L GENUINE 99-85Y
RED 5L GENUINE 1603-195C
RED 5L RUBY 21-1603
Sire: **RED LASO GENUINE G174K (2309837)**
RED LSF MEW X-PORTER 6695D
RED LSF SRR CRYSTAL D6427-G9178
RED LSF SRR CRYSTAL Y1410 D6427
RED LSF MEW PLATINUM 5660C
RED BENCHMARK PLATINUM 83'18
RED BENCHMARK QUEEN 111'16
Dam: **RED BENCHMARK MAID 50K (2296976)**
RED LIKE IT PROFIT BUILDER 7215E
RED BENCHMARK MAID 61'19
RED MAID OF BENCHMARK 992 NHF

PERFORMANCE				EPD'S			
AOD	BW	205D	365D	CE	BW	WW	YW
2	99	630	1056	-10.0	+4.5	+48	+90

OCTOBER 2025 EPD RANKING:

MARB	DOC	YW
Top 1%	Top 2%	Top 20%



Herdsire of Lots 39 to 40
RED LASO GENUINE G174K

To be used on cows, from a two year old heifer,
with a good marbling projection.



40 RED BENCHMARK GENUINE 12M

Bull BFL 12M | April 14 2024 | 2383831

CARCASS EPD'S

MARB
+0.64

REA
+0.47

CW
+32

FAT
+0.013

ACTUAL

%IMF
2.65

REA
1.12

RIB FAT
0.24

LMY
63.4%

RED 5L GENUINE 99-85Y
RED 5L GENUINE 1603-195C
RED 5L RUBY 21-1603
Sire: **RED LASO GENUINE G174K (2309837)**
RED LSF MEW X-PORTER 6695D
RED LSF SRR CRYSTAL D6427-G9178
RED LSF SRR CRYSTAL Y1410 D6427
RED LSF MEW PLATINUM 5660C OSF
RED BENCHMARK PLATINUM 83'18
RED BENCHMARK QUEEN 111'16
Dam: **RED BENCHMARK VIRGINIADOLL 47K (2295115)**
RED DUNN BETTER A500
RED BENCHMARK VIRGINIADOL35'19
RED BENCHMARK VIRGINIADOL13'12

PERFORMANCE				EPD'S			
AOD	BW	205D	365D	CE	BW	WW	YW
2	80	659	1195	+4.0	+1.1	+52	+99

OCTOBER 2025 EPD RANKING:

MARB	YW	WW
Top 2%	Top 8%	Top 20%

From a two year old heifer. Lot 40 has some grow
and his calves will grade.

41 RED BENCHMARK MONTANA 08M

Bull BFR 08M | April 01 2024 | 2390347

CARCASS EPD'S

MARB
+0.40
REA
+0.49
CW
+50
FAT
+0.010

ACTUAL

%IMF
2.46
REA
1.02
RIB FAT
0.24
LMY
63.2%

RED BASIN EXT 5233
RED BASIN EXT 45T5
BASIN ROSE 710P
Sire: **RED BENCHMARK MONTANA 22J** (2212144)
RED LAUBACH DEEP END 7047
RED BENCHMARK VIRGINIADOL34'19
RED BENCHMARK VIRGINIADOLL 050
RED BROWN COMMITMENT S7206
RED LSF RAB COMMITMENT 2792Z
RED BROWN MS MAKIN HAY W7901
Dam: **RED BENCHMARK LAKIMA 13'18** (2019580)
RED LSF MEW GAME CHANGER 1613Y
RED BENCHMARK LAKIMA 70'14
RED BENCHMARK LAKIMA 871

PERFORMANCE				EPD'S			
AOD	BW	205D	365D	CE	BW	WW	YW
6	99	728	1289	-5.0	+4.3	+55	+99

OCTOBER 2025 EPD RANKING:				
MILK	CW	YW	WW	MARB
Top 1%	Top 2%	Top 8%	Top 15%	Top 15%



Benchmark Better Beef,
Grand Champion Bull, Denver 2013

Lakima 13 '18 has a son at Reid Moynihan's.
Great 205D and 365D weights on Lot 41.

42 RED BENCHMARK MONTANA 09M

Bull BFR 09M | April 02 2024 | 2390349

CARCASS EPD'S

MARB
+0.45
REA
+0.56
CW
+33
FAT
-0.015

ACTUAL

%IMF
2.83
REA
1.05
RIB FAT
0.19
LMY
63.5%

RED BASIN EXT 5233
RED BASIN EXT 45T5
BASIN ROSE 710P
Sire: **RED BENCHMARK MONTANA 22J** (2212144)
RED LAUBACH DEEP END 7047
RED BENCHMARK VIRGINIADOL34'19
RED BENCHMARK VIRGINIADOLL 050
RED BROWN ALLIANCE X7795
RED DUNN BETTER A500
RED LSF SWEETNESS J1358 P4085
Dam: **RED BENCHMARK RUTH ANN 31'18** (2019595)
RED BASIN EXT 45T5 F
RED BENCHMARK RUTH ANN 61'13
RED BAR-X EVITA 5R

PERFORMANCE				EPD'S			
AOD	BW	205D	365D	CE	BW	WW	YW
6	88	625	1145	+0.0	+2.3	+51	+83

OCTOBER 2025 EPD RANKING:			
MARB	RIBEYE	WW	YW
Top 8%	Top 20%	Top 25%	Top 30%

Ruth Ann 31'18 has an impressive daughter in the herd and son at Curtis Benedict's.

43 RED BENCHMARK INFERNO 68M

Bull BFR 68M | May 21 2024 | 2398827

CARCASS EPD'S

MARB
+0.19
REA
+0.44
CW
+38
FAT
-0.008

ACTUAL

%IMF
2.54
REA
1.14
RIB FAT
0.23
LMY
63.8%

RRA AVIATOR 507
RED NCJ COMING IN HOT 24EF
RED NCJ MINERVA 35C
Sire: **RED SVR INFERNO 175G** (2121453)
RED CROWFOOT 187X
RED SVR MS CHIEF 97B
RED SVR MS CHIEF 76S
RED BIEBER DEEP END B597
RED LAUBACH DEEP END 7047
RED LAUBACH JODI 9018
Dam: **RED BENCHMARK FAYETTE 30'19** (2105189)
RED DUNN BETTER A500
RED BENCHMARK FAYETTE 7'15
RED BENCHMARK FAYETTE 33'11

PERFORMANCE				EPD'S			
AOD	BW	205D	365D	CE	BW	WW	YW
5	81	669	1191	+10.0	-1.8	+53	+91

OCTOBER 2025 EPD RANKING:					
CE	BW	MILK	WW	CW	YW
Top 6%	Top 7%	Top 8%	Top 15%	Top 15%	Top 20%

Fayette 30 '19 has a son working for Ric and Linda Arthur's. Lot 43 is sired by the South View bull that we used for three years, with his bull calves averaging 82 lbs and his heifer calves averaging 72 lbs at birth.



CATTLE HEALTH MANAGEMENT



403-328-4454
office@cattlehealth.com

Quality From Benchmark® Angus

BEN'S QUALITY MEATS



THE BEST TASTING BEEF FOR NEARLY 100 YEARS.

Currently, our fourth generation in ranching continues the ongoing quest for the productive and efficient cattle that are continually exceeding the industry standards and satisfying all who consume beef. The Munton family has been pursuing Angus beef genetics for the proven tenderness and far superior taste that only Premium Benchmark Angus Cattle provide.



403-732-5122
BENQMEATS.NET
BENQMEATS@GMAIL.COM
100 FACTORY DRIVE
BOX 129
PICTURE BUTTE, AB T0K 1V0



@BENCHMARK.ANGUS



@BENCHMARK.ANGUS

Seedstock Producer of the Year



Pictured: Valerie and Doug Muntun and Joe Epperly, President.

Each year the Beef Improvement Federation accept nominations for “Seedstock Producer of the Year”. From these nominations three finalists are determined. 2023 found Benchmark® Angus among the three finalists. We are proud to be recognized by such a prestigious organization.

The worldwide Beef Improvement Federation is an organization dedicated to advancing and co-ordinating all segments of the beef industry. The BIF seeks to connect science and industry

to improve beef cattle genetics. The mission of BIF is to advance the beef industry through genetic improvement with the vision to drive the improvement of efficiency, profitability and sustainability of beef production.

Benchmark® Angus applauds the vision and mission of BIF and we, for over 60 years, have focused on such values. And thus our aged slogan ‘*Be sure your cattle measure up – use a Benchmark® bull.*’ Be sure to check out BIF at beefimprovement.org



Milk River
Home Hardware
Building Centre
109 Centre Ave.
Box 240
Milk River
Alberta

T 403-647-3636
403-647-3515

C 403-642-7820
F 403-647-3533
mrlumber@mrcable.ca

*Looking for fence posts & barb wire?
We have a great selection of peeled, Spray Lakes posts available!*

Terry Russell
Kathy Russel



Chartered Professional Accountants

Expected Progeny Differences (EPDs)

Expected Progeny Differences (EPDs) are the most powerful genetic tool we have for selecting the best animals for your breeding program. EPDs are values that predict how the future progeny of an animal will perform relative to the progeny of other animals in the same breed.

EPDs:

- allow breeders to estimate a young animal's breeding value - that animal's value as a parent
- allow a fair comparison of breeding value by removing environmental bias such as climate, feed and special management
- the best tool available to compare animals between herds, countries and year of birth
- help breeders make informed decisions regarding breeding stock selection by evaluating numerous traits such as

#1 Growth Related Traits (WW, YW, CW, Milk, RADG, DMI, F:G)

WEANING WEIGHT (WW) Expressed in pounds, is a predictor of a sire's ability to transmit weaning growth to his progeny compared to other sires.

YEARLING WEIGHT (YW) Expressed in pounds, is a predictor of a sire's ability to transmit yearling growth to his progeny compared to other sires.

MILK Expressed in pounds, is a predictor of the milking ability in a sire's daughters, representing the difference in weaning weights of calves due to the amount of milk produced by their mothers.

CARCASS WEIGHT (CW) is expressed in pounds predicting the differences in the average carcass weight of sires progeny.

RESIDUAL AVERAGE DAILY GAIN (RADG) Expressed in pounds per day, is a predictor of a sire's genetic ability for post weaning gain in future progeny compared to that of other sires, given a constant amount of feed consumed.

DAY MATTER INTAKE (DMI) Expressed in pounds per day, is a predictor of difference transmitting ability for feed intake during post weaning phase, compared to that of other sires.

FEED TO GAIN (F:G) Is the amount of feed (dry matter) consumed to gain one pound of gain, expressed as a ratio. The average feed conversion ratio is 6.1 to 1. Feed costs are 65- 70% of all costs.

#2 Reproductive Related Traits (BW, CE, MCE, SC, HPG, Stay)

BIRTH WEIGHT (BW) expressed in pounds, is a predictor of a sire's ability to transmit birth weight to his progeny compared to other sires.

CALVING EASE (CE) the average difference in ease with which a sire's calves will be born when he is bred to first calf heifers, a higher number indicates a higher probability that his calves will be born unassisted.

MATERNAL CALVING EASE (MCE) Predicting the average calving ease with which a sire's first calf heifers will calve when compared to daughters of other sires.

SCROTAL CIRCUMFERENCE (SC) Expressed in cm, is a predictor of the difference in transmitting ability for scrotal size compared to other sires.

HEIFER PREGNANCY (HPG) is a predictor of the percent probability in a bull's daughter's ability to conceive and calve as two year olds

STAYABILITY (Stay) is the percent probability of daughters staying in production to at least six year of age.

#3 Carcass Related Traits (Fat , REA, % IMF)

To evaluate seed stock, use EPDs, pedigree and visual assessment. With EPDs, the concept of "intermediate optimums" works best.

Selection for one trait or for extremes generally results in unexpected consequences due to genetic correlations - for example, intense selection for high yearling weight will generally increase birth weight. Successful cattle breeding requires a thoughtful and balanced approach to optimize fertility, growth and carcass merit while improved profitability and efficiency. With all the data that comes with each bull, I'm sure at times it must be overwhelming. In order to use body composition EPDs of ultrasound data to their full potential, a breeder must have an understanding of the ultrasound terminology. Several of the ultrasound measurements are comparable to the familiar carcass measurements. The data is simply collected on yearling bulls and heifers instead of market ready steers. Take a step back from looking at the numbers and become comfortable with the terminology.

RIB FAT An external fat measurement taken between the 12th and 13th rib - the location a carcass would be split into quarters in the cooler reported in inches. Rib fat is the main factor in the USDA Yield Grade Equation.

RIBEYE AREA (REA) An area measurement of the longissimus dorsi, or ribeye muscle - reported in square inches. This image tends to be the most difficult to collect and requires the most highly skilled interpreting technician. Both the rib fat and ribeye area measurements are taken from the same image. The REA score is reported as sq. in. per 100lbs. of body weight.

RUMP FAT An external fat measurement taken from an image collected between the hooks and the pins of the animal, reported in inches. The rump fat measurement coupled with the rib fat measurement, is used to determine more accurately the overall external body fat, enhancing the accuracy of predicting percent retail product (PRP). In most cases, an animal will exhibit more fat over the rump than the rib due to physiological process of “laying on fat.” Therefore, more variation is often displayed in the rump fat measurements of a contemporary group than the rib fat. This image is highly repeatable and is the least difficult to collect or interpret.

INTRAMUSCULAR FAT (%IMF) This measurement determines the amount of fat within the muscle (similar to marbling) and is reported in “%.” This measurement should be collected when cattle are maintaining a high level of nutrition. The field technician collects four images and the values generated by the interpreting software are averaged for an overall %IMF.

The Angus Associations, both AAA and CAA have adopted the CUP (Centralized Ultrasound Processing) Program for Ultrasounding Carcass Data and are using this information for formulating Carcass EPDs. This is the 22nd year we have provided ultrasound measurements as taken by certified technicians. We feel it is very important that you, our valued customer, know what is under the hide as that really does determine value. It has been determined through many studies that carcass traits are highly heritable and that feeding has only marginal effect on the resulting carcass - genetics determine carcass quality!

OCTOBER 2024 ANGUS EPD AVERAGES FOR ALL CALVES BORN IN 2023

BLACK ANGUS

CE	BW	WW	YW	Milk	CW	REA	Marb	Fat
+3.2	+2.1	+55	+96	+23	+43	+0.53	+0.47	+0.018

RED ANGUS

CE	BW	WW	YW	Milk	CW	REA	Marb	Fat
+2.4	+1.4	+43	+74	+25	+26	+0.42	+0.23	-0.007

SALES TERMS & CONDITIONS

TERMS:

The terms of the sale are cash or cheque payable at par to Benchmark Farms Ltd., Lethbridge, AB unless prior arrangements are made with the seller. The right of property shall not pass until full settlement is made.

All arrangements and settlements must be made with Benchmark Farms Ltd. before any cattle will be release.

PURCHASER'S RISK:

Each animal becomes the risk of the purchaser as soon as sold.

CERTIFICATE OF REGISTRY:

A certificate of registry duly transferred will be furnished to the buyer for each animal after settlement is made.

BIDS AND BIDDING:

Sale bidding opens: November 28th at 12pm MST. Sale bidding soft closes: November 29th at 7pm MST. During the Racehorse Style soft close extended bidding always follow the clock of remaining time left to bid.



SHIPPING:

Assistance will be given in making shipment after the sale but no risk is assumed by the seller. Expenses incurred are the responsibility of the purchaser. Purchasers are requested to furnish shipping instructions when making settlement. Any additional expenses are the responsibility of the buyer, including duty, brokerage fees, etc.

ACCIDENTS:

Although every precaution will be taken too ensure the safety of visitors to the ranch, the owners do not assume any responsibility or liability, legal or otherwise, in the event of any unforeseen incidents resulting damage or loss of property.

BREEDER'S GUARANTEE:

Everything possible has been done to assure that every bull in this sale will be a breeder. Taber Cattle Clinic semen tested and physically evaluated every bull. However, should a problem arise, please inform the seller so further arrangements may be made.



Benchmark® Angus retains a one-half semen interest in every bull selling.



BENCHMARK[®]
Your Carcass Source *Angus*



BENCHMARK FARMS LTD.
BOX 997, LETHBRIDGE, AB T1J 4A2