



SIX MILE RANCH **48th BULL SALE**
Annual

SATURDAY, APRIL 1, 2023

AT THE RANCH, FIR MOUNTAIN, SK

SPECIAL OFFERING OF FEMALES



Welcome TO SIX MILE AND OUR 48TH ANNUAL BULL SALE

Welcome to our 48th Annual Bull Sale! We look forward to hosting you and your family on April 1st at our Ranch!

For those new to the Six Mile program, we take pride in being a family owned and operated cattle ranch that makes its sole living off our hard-working, 700 head cow herd. This ranch and these cows are our life and our livelihood! We certainly appreciate your time given to evaluate our bull and female offering. We look forward to visiting with you and earning your business. Honesty and integrity are pillars for our family and our cattle.

For those that are past supporters, we say THANK YOU! Our customers are our lifeblood. We are honoured to have many intergenerational operations that have put their faith and trust in our program. We work diligently to provide the industry standard in customer service and build relationships with those that invest in our program; our slogan rings true "Where Customers Become Friends".

This year's offering is the most complete and exciting to date. We heavily invested in herd sires and exclusive genetics, solely with our customers' needs in mind. Nothing is held back! At Six Mile, no bulls are sold prior to bull sale. None are hidden or retained for our own personal gain. We have and always will offer access to ALL of our highest quality bulls at public auction. This set of bulls is our most progressive line up yet.

In a time when the world is as upside down as ever, our Agriculture family is deeply rooted with morals, work ethic, and a passion for our way of life that the general public simply does not understand. Despite all of the uncertainties in weather, commodity prices, inflation and politics; I still firmly believe that the cattle industry is the greatest place to raise a family.

Feel free to call or stop in at the ranch to go through the offering ahead of sale day. We look forward to and appreciate the opportunity of earning your business.

Sincerely,

Tyson Hertz & the Entire 6M Crew

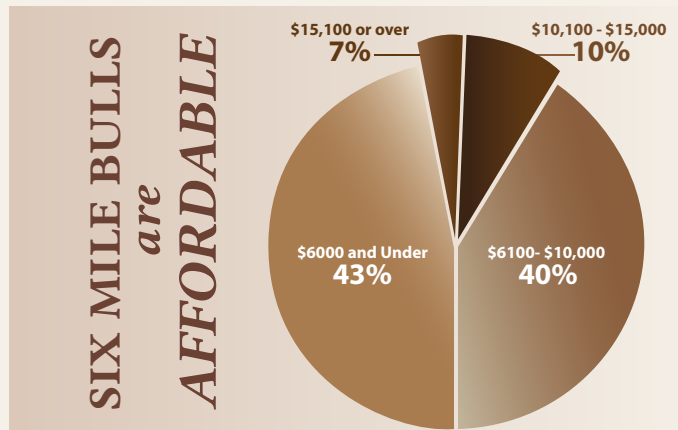


Clayton, Corinne, Cade and Coy Gibson,
Tyson, Callie, Sloane, Fowler, and Rustin Hertz

Box 8, Fir Mountain, Sask. S0H 1P0

Tel: 306-266-4895 | Cell: 306-642-8013 | Email: sixmile@sasktel.net

www.sixmileredangus.com



SCHEDULE of EVENTS

FRIDAY, MARCH 31
Bulls Available for Viewing all day
Refreshments and Supper Available

SATURDAY, APRIL 1
Bulls Available for viewing up until sale time
11:30 Lunch Served
1:30 Sale Time
After sale refreshments and socializing

THANK YOU to our talented Six Mile Team



Tyson Hertz
Purebred Operations
403-376-7284



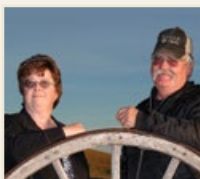
Sebastien Stewart
Marketing
250-423-1357



Rae Tutor
Office Manager



Cade Gibson
Ranch Foreman



Walter & Rosie Wall
Retired "Go To Guy"




Tyson Buist
Show/Sale Cattle Associate

SALE DAY PHONE

| | |
|---------------------------------|--------------|
| Tyson Hertz | 403-376-7284 |
| Clayton Gibson | 306-642-8013 |
| Corinne Gibson | 306-640-7970 |
| Callie Hertz | 306-640-9275 |
| Sebastien Stewart | 250-423-1357 |
| Tyson Buist | 306-741-1038 |
| Sale Barn (SALE DAY ONLY) | 306-266-2186 |

SALE STAFF

T Bar C Cattle

| | |
|---|--------------|
|  Chris Poley, <i>Auctioneer</i> | 306-220-5006 |
| Shane Michelson, <i>Ring Staff</i> | 403-363-9973 |
| Ben Wright, <i>Ring Staff</i> | 519-374-3335 |

Bohrson Marketing

| | |
|--|--------------|
|  Scott Bohrson | 403-370-3010 |
| Rob Voice | 306-270-6082 |
| Jaxon Payne | 306-830-0456 |

Heartland Livestock, Swift Current

| | |
|--|--------------|
|  Lee Crowley | 306-741-5701 |
|--|--------------|

Petrosa Exports

| | |
|--------------------|--------------|
| Roger Peters | 403-828-9815 |
|--------------------|--------------|

Breed Creek Angus

| | |
|-------------------------|--------------|
| Clint Smith, cell | 306-478-7470 |
| home | 306-478-2470 |

Insurance

| | |
|--|--------------|
| Larry Toner, <i>Stockmen's Insurance</i> | 306-931-0088 |
|--|--------------|

Videographer

| | |
|--------------------------------------|--------------|
| Golden Thread Livestock Images | 306-681-5340 |
|--------------------------------------|--------------|

ONLINE BIDDING

www.dvauction.com

| | |
|--|--------------|
| DV Auction , Sarah Hasson | 306-681-5340 |
|--|--------------|



www.dlms.ca

| | |
|-----------------------------------|--------------|
| DLMS , Mark Shologan | 780-699-5082 |
|-----------------------------------|--------------|



Important Delivery Details

on the inside back cover of the catalogue

GENERAL SALE INFO

SIGHT UNSEEN PURCHASES If you are interested in purchasing a bull, but cannot make it to the sale, please contact Clayton or Corinne Gibson or Tyson Hertz preferably 48 hours prior to sale day. We will discuss your needs and come up with a list of bulls that will work for you. On sale day we will endeavor to buy bulls on your behalf. Your order will be held in strictest confidence. Your **SATISFACTION** is 100% guaranteed when you have discussed your order with any of the Six Mile ranch team prior to purchase.

PAYMENT TERMS The terms of the sale are cash or check payable at par at the completion of the sale. If you purchased an animal as an absentee bidder, please make arrangements to mail a cheque or wire money within 48 hours of the sale. Free Delivery within 500 miles if paid for within 14 days.

Please contact Clayton or Corinne Gibson prior to the sale, if you require special payment or financing terms.

More Sale Info found on Page 76 and the inside back cover

6 Questions With T BAR



1. What are the first three words that come to mind when you think of Six Mile Ranch?

Pioneers - Integrity - Quality

2. Why Should customers consider Six Mile for their next bull purchase?

That is simple, because of the three words above. Six Mile Ranch are Pioneers in the Red Angus business and they have built one of the largest and most dominant Red cow herds in North America. They have influenced the breed around the world. They have also applied the same principles to breeding Black cattle that made their Red Angus cow herd successful. The cattle from this program both Red and Black have been proven to thrive in both the show ring and the harshest range conditions possible, which speaks to the point of quality. Finally, Integrity, the fact that most of their bulls sell to repeat customers proves they have a high degree of integrity. Many of the families buying have been dealing with Six Mile for two and even three generations now.

3. Which member of the T Bar Team has the most criminal offenses / speeding tickets?

This question is a bit of a sore spot as we all have a large collection of speeding tickets... it's a three-way tie!

4. What is your favourite bull sale meal?

Meatballs

5. Which T Bar team member is the highest maintenance?

Shane

6. What is Team T Bar's favorite restaurant in Canada?

On rare and special occasions, we get treated to a home cooked meal! That beats any restaurant in the world!

6 Questions With Bohrson



1. What are the first three words that come to mind when you think of Six Mile Ranch?

Driven - Competitive - Quality

2. Why Should customers consider Six Mile for their next bull purchase?

"Where customers become friends" is their motto for a reason as they pride themselves on customer satisfaction. The 6M Team will go the extra mile to ensure every customer has a quality breeding bull to service their cows. The service you receive after buying at 6M genetics is industry leading.

3. Which member of the Bohrson Team has the most criminal offences / speeding tickets?

We all drive BMS owned vehicles so it is an ongoing joke in the office when a photo radar ticket shows up in the mail and they see whose car it belongs to. Those get pretty spread around so if we had to nail it down to one person for total tickets, Scott probably would have the highest ticket count.

4. What three words best describe the Bohrson marketing philosophy?

Integrity - work ethic - knowledge

5. If Team Bohrson had to pick a favorite restaurant anywhere in Canada - where would that be?

Wong's in Swift Current is definitely the most talked about and a favourite with the Wong's Hot Plate as a must have.

6. If a movie was made about team Bohrson, what actors would you choose to play your parts?

Voice has been compared to Ryan Reynolds while Taylor has been referred to Leonard DiCaprio multiple times on the road so that would be a start. Haney and Snides do replicate Schwarzenegger/Devito from the movie Twins. Sibbald has met Kevin Costner while he shot a movie on their property so that is an ideal fit. Action Jaxon would need an action star like Chris Pratt to play him while Martin has the Clint Eastwood receding hairline to fit the bill. Michael Douglas & Catherine Zeta-Jones would play Scott & Becky because of the age difference plus she is much too hot for him.



WHY SIX MILE?



IMMENSE PRIDE
in our customers' successes, what we do and how we do it



2023 NWSS Champion Pen of Red Angus Bulls
These bulls sell as Lot 1, 6 and 2

PASSION for this way of life
and producing the highest quality animals we can

D&P Rooke Farms purchased SIX MILE HURRICANE 124H
in 2021 for \$7750. In his first calf crop a daughter of Hurricane topped the Keystone Klassic Sale!



DIVERSITY *of exclusive genetics; team skill sets and experience*



Ward's Red Angus invested in SIX MILE WICK 60H
*in 2021 and his first calf crop exceeded all expectations, highlighted by their high seller at Touch of Class, their Red Round Up sale heifer and a very consistent sire group in their bull sale!
A ¼ brother to Wick 60H sells as Lot 61*

CONSTANT PURSUIT *of improvement in our cow herd, operation, practices and ourselves*

Five Generations Strong.

Become A Part of the *"Six Mile Experience"*

"Where Customers, Become Friends"

STEADFAST DEDICATION

*to our customers, livestock,
family and land*



Rosebud Cattle & Robinson Cattle invested in SIX MILE PARABELLUM 675G

and have topped numerous heifer sales in the USA with daughters of Parabellum including a \$25,000 selling in Weis Cattle sale to Hartmans and a \$36,000 for ½ interest daughter bred by Weidenbach, sold by Rosebud! His semen is in short supply and high demand commanding well over \$1000/unit.

Parabellum sons sell as Lots 50-56 & Lot 60!

2023 NWSS Reserve Champion Black Angus Bull

*Riverstone Vegas 49H
Son sells as Lot 122*



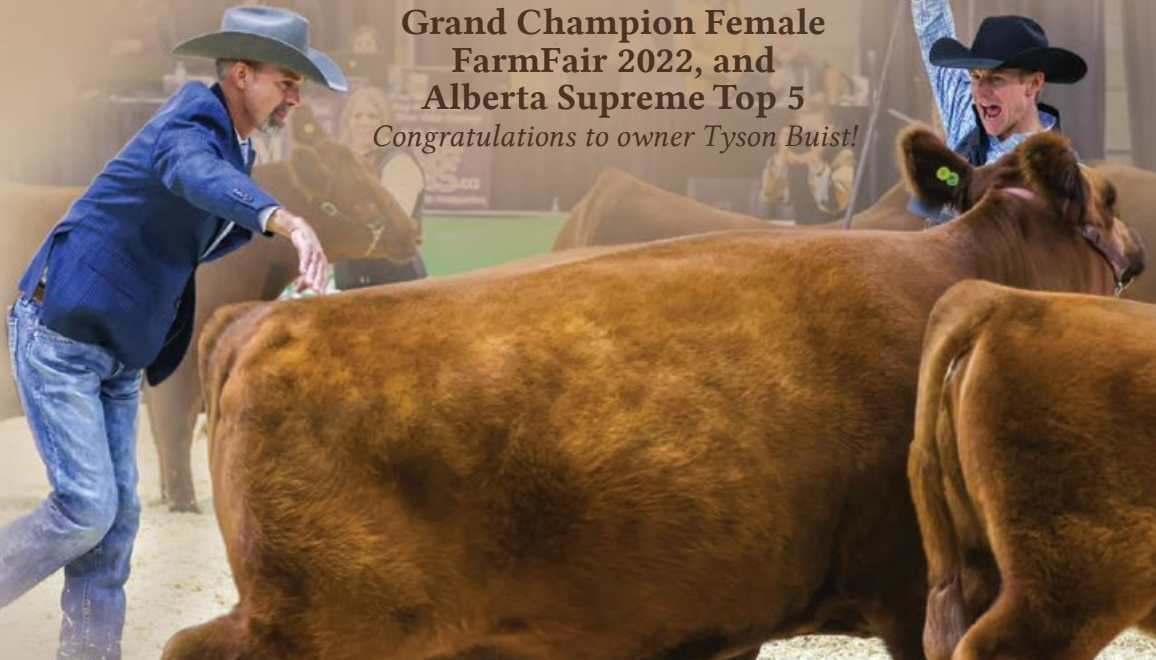
HANDS ON 365 direct involvement- in analysis,
decisions, execution and completion
of all aspects of our operation

SIX MILE MS. EXTRA 373H
WAS SELECTED

**Grand Champion Female
FarmFair 2022, and
Alberta Supreme Top 5**

Congratulations to owner Tyson Buist!

Spencer Wangen has invested heavily in the Six Mile program and we are very proud of his success with our genetics, specifically- at the Iowa Beef Expo. He has exhibited back-to-back Champion Females- both females were in dam purchases from Six Mile! He also topped the bull sale at IBE with a son of Six Mile Stealth 269F!





Lot 1 RED SIX MILE **COLD OPEN** 82K

Reg No: 2259739 / Tattoo: SIXM 82K / DOB: February 04 2022

BLACK WHEEL DRACARYS 178E
RED WHEEL STARK 67G
 RED WHEEL ROSE 66C

PEAK DOT ELIMINATOR 100Z
RED SIX MILE PATSY 947E
 RED SIX MILE PATSY 550B

Act BW 85 Adj WW 801 Adj YW 1372 **Calving Ease Level 2 to 3**

| | CED | BW | WW | YW | Milk | CEM |
|------------------|------------|------------|-----------|------------|-----------|------------|
| Angus One EPD | 3 | -0.3 | 61 | 111 | 19 | 6 |
| Percentile Rank | | 24 | 3 | 1 | | |
| BOLT EPDs | 8.3 | 0.9 | 74 | 129 | 28 | 5.2 |

- Welcome to our 48th Annual Bull Sale! Highlighting our most exciting offering to date is Cold Open 82K. Blood red, perfect black foot and impressive in the flesh and on paper. He led the way in our NWSS Champion Pen of Bulls. He is backed by a prolific cow who proved her way to the donor pen, Patsy 947E became a CAA Designated Elite Dam this year with a huge average wean ratio on 4 calves of 114. Her past feature sons have been selected Hillcrest Colony and La Bonanza in Mexico. With 13 EPD traits in the top 20% or better, 82K blends low birth with a remarkable growth projection. He is a bull that will see heavy use moving our program forward as we focus on creating the next generation of high maternal, sound footed, dark colored cattle that grow and perform while maintaining a sensible frame size and superior fleshing ability at Six Mile.
- **Terms to be announced**



Dam – Patsy 947E



Sire- Stark 67G



Champion Pen of 3 Bulls NWSS 2023- Lots 1, 6 and 2

The Complete Package



Full Sister- Miss Lark 12K



Dam - Miss Lark 225E



Flash BROTHERS

Lot 3 RED SIX MILE MR WICK 14K

Reg No: 2266624 / Tattoo: SIXM 14K / DOB: January 10 2022

Act BW 80 (ET) Adj WW 728 Adj YW 1331 **Calving Ease Level 3 to 4**

| | CED | BW | WW | YW | Milk | CEM |
|-----------------|-----|----|----|----|------|-----|
| Angus One EPD | 7 | 1 | 54 | 92 | 24 | 8 |
| Percentile Rank | 19 | | 8 | 8 | | 19 |

Lot 5 RED SIX MILE MR WICK 11K

Reg No: 2266643 / Tattoo: SIXM 11K / DOB: January 08 2022

Act BW 76 (ET) Adj WW 789 Adj YW 1390 **Calving Ease Level 3 to 4**

| | CED | BW | WW | YW | Milk | CEM |
|-----------------|-----|-----|----|----|------|-----|
| Angus One EPD | 7 | 0.4 | 48 | 92 | 34 | 9 |
| Percentile Rank | 19 | 35 | 21 | 8 | 1 | 12 |

Lot 4 RED SIX MILE MR WICK 13K

Reg No: 2266641 / Tattoo: SIXM 13K / DOB: January 10 2022

Act BW 85 (ET) Adj WW 781 Adj YW 1310 **Calving Ease Level 3 to 4**

| | CED | BW | WW | YW | Milk | CEM |
|-----------------|-----|-----|----|----|------|-----|
| Angus One EPD | 7 | 0.5 | 45 | 77 | 26 | 12 |
| Percentile Rank | 19 | | 31 | 30 | 25 | 2 |

Lot 6 RED SIX MILE MR WICK 10K

Reg No: 2266642 / Tattoo: SIXM 10K / DOB: January 07 2022

Act BW 78 (ET) Adj WW 735 Adj YW 1224 **Calving Ease Level 3 to 4**

| | CED | BW | WW | YW | Milk | CEM |
|-----------------|-----|-----|----|-----|------|-----|
| Angus One EPD | -1 | 2.6 | 58 | 103 | 27 | 4 |
| Percentile Rank | | | 4 | 3 | 16 | |



Full Sister – Miss Lark 35K



5



6



Full Brother – Mossy Oak 175H

Flash BROTHERS

Shared Pedigree and BOLT EPDs for Lots 3 - 6

| | |
|---|------------------------------------|
| RED U-2 RECKONING 149A | RED RUST BULL 31B |
| RED SIX MILE JOHN WICK 882E | RED SIX MILE MISS LARK 225E |
| RED SIX MILE & CO GLORIA 29A | RED SIX MILE MISS LARK 300C |
| BOLT EPDs: CED 14 BW -1.2 WW 77 YW 125 Milk 32 CEM 9.7 | |

The highest quality and most consistent flush in our program's history. These 4 full siblings to Semex/Moose Creek sire and past high seller, Mossy Oak 175H, have been standouts since day 1. Two flushmate sisters were features this past fall in our Genetic Focus Sale with one being the high-selling female. Uniform quality is evident in this impressive flush but each bull has unique attributes that will propel your breeding program forward.

Lot 3 is the stoutest pinned and biggest hipped of the full brothers. A class winner "On the Hill" in Denver, he was admired for his bold hip and fault free structure while still maintaining an intriguing look and balance from all angles.

Lot 4 is the shaggy, big legged flushmate who moves like a cat. He is so correct in his angles and movement. 13K ties high at the top of his shoulder with a captivating outline and a soft turn from rib to flank. Additionally, he offers the darkest colored foot.

Lot 5 is the large outlined stretchy built brother. He also shows the deepest rib cage and comes levellest from hooks to pins. Again, he gets out and travels with ease and comfort off both ends of his skeleton.

Lot 6 was a member of NWSS Champion Pen of 3 Bulls. He is more moderate in stature than his brothers without sacrificing muscle shape and dimension. His calm and curious demeanour was evident early in life.

These full sibs all possess breed leading EPD profiles to go along with their exceptional phenotype.



- explosive growth, powerhouse cow bull, big time performance
- Enid 227D is a beautiful big-bodied, heavy milking Brandin Iron daughter. One son sold to Creekside Ranch and a daughter highlighted GF 2021 to Bar Lazy TL in Utah! She also has one daughter retained in herd. She boasts an incredible wean ratio of 113 on 5 calves.



Sire of Lots 2- 8 – John Wick 882E

Lot 7 RED SIX MILE MR WICKED 148K

Reg No: 2259951 / Tattoo: SIXM 148K / DOB: February 12 2022

RED U-2 RECKONING 149A

RED HCG BRANDING IRON

RED SIX MILE JOHN WICK 882E

RED SIX MILE MS ENID 227D

RED SIX MILE & CO GLORIA 29A

RED SIX MILE ENID 287X

Act BW 98 Adj WW 861 Adj YW 1375 **Calving Ease Level 1**

| | CED | BW | WW | YW | Milk | CEM |
|-----------------|------|------|----|-----|------|-----|
| Angus One EPD | -2 | 4.2 | 76 | 130 | 23 | 9 |
| Percentile Rank | | | 1 | 1 | | 12 |
| BOLT EPDs | 12.8 | -0.7 | 68 | 111 | 22 | 9 |

Lot 8 RED SIX MILE MR WICK 29K

Reg No: 2259563 / Tattoo: SIXM 29K / DOB: January 24 2022

RED U-2 RECKONING 149A

RED RRA ONE AND ONLY 733

RED SIX MILE JOHN WICK 882E

RED SIX MILE ALANA 189H

RED SIX MILE & CO GLORIA 29A

RED U6 ALANA 13X

Act BW 73 Adj WW 778 Adj YW 1171 **Calving Ease Level 3**

| | CED | BW | WW | YW | Milk | CEM |
|-----------------|------|------|----|-----|------|-----|
| Angus One EPD | 6 | 0.4 | 58 | 91 | 28 | 11 |
| Percentile Rank | 24 | 35 | 4 | 9 | 11 | 4 |
| BOLT EPDs | 15.2 | -1.9 | 75 | 121 | 29 | 9.9 |



- dark red shag, long and extended front end, superior cow family
- 189H is a stunning dark-red ET daughter Alana 13X. She has an elite look from the side with a gorgeous udder. She weaned this bull calf off with a great 113 wean ratio.



Maternal Granddam – Alana 13X



Lot **9**

RED SIX MILE RANCH **COVEY** 352K

Reg No: 2288281 / Tattoo: SIXM 352K / DOB: March 04 2022

RED SSS TYCOON 225E

RED SIX MILE JOHN WICK 882E

RED W SUNRISE TYPHOON 604H **RED SIX MILE MS TAFFETA 419H**

RED HOWE JOANNA 145C

RED SIX MILE MS TAFFETA 142B

| | Act BW 81 | Adj WW 892 | Adj YW 1378 | Calving Ease Level 4 | | |
|------------------|-----------|------------|-------------|-----------------------------|------|-----|
| | CED | BW | WW | YW | Milk | CEM |
| Angus One EPD | 5 | 0.7 | 60 | 92 | 24 | 11 |
| Percentile Rank | 31 | | 3 | 8 | | 4 |
| BOLT EPDs | 14.6 | -1.7 | 86 | 128 | 29 | 8.5 |

- elite heifer bull prospect, explosive hip shape, bold sprung, pen favourite
- We knew that the Taffeta 142B x John Wick mating would be excellent. 419H and her flush sister 383H have surpassed our expectations of that mating. Phenotypically beautiful with a look at me attitude. 419H is what we strive to produce here at Six Mile. She did an extremely great job weaning this calf off with a 139 wean index.



Dam – Ms Taffeta 419H



Alternate View of Lot 9



Maternal Granddam – Ms Taffeta 142B

A Maternal Masterpiece

TYPHOON Son





Lot 10 RED SIX MILE **KING PIN** 30K

Reg No: 2273667 / Tattoo: SIXM 30K / DOB: January 24 2022

RED LSF SRR TYSON 3125A
RED SSS TYCOON 225E
 RED SSS VALENTINE 335Z

RED U-2 RECKONING 149A
RED SIX MILE FANNY 149D
 RED SIX MILE FANNY 526X

Act BW 88 (ET) Adj WW 668 Adj YW 1321 **Calving Ease Level 4**

| | CEB | BW | WW | YW | Milk | CEM |
|------------------|------|------|----|-----|------|-----|
| Angus One EPD | 12 | -1.4 | 37 | 64 | 32 | 8 |
| Percentile Rank | 3 | 12 | | | 2 | 19 |
| BOLT EPDs | 12.4 | -2 | 71 | 112 | 29 | 7.6 |

- sale feature, shapely design, stout pinned and big topped, sleep easy dark red heifer bull
- Fanny 149D is a donor for ourselves and Sunberry Valley Farms. She was CWA Grand Champion Red Angus Female in 2019 and RBC Top 10 Supreme Female. A simply stunning phenotype on this donor female.
- **Terms To Be Announced**



Dam – Fanny 149D



Sire – Tycoon 225E

The *Calving Ease* Specialist

- heavy muscled, female maker, dark red, high performing
- 317F is from the famed “Lassie” cow family. We expect big things from her in the future as she seems to be transmitting her maternal characteristics and dark color into her progeny. A daughter sold as a highlight female in Genetic Focus 2022 to the great folks at Westway Farms. Wean ratio of 107 on 2 calves.



Maternal Granddam – Lassie 377P



Lot 11 RED SIX MILE **TYPHOON** 107K

Reg No: 2259769 / Tattoo: SIXM 107K / DOB: February 08 2022

RED SSS TYCOON 225E

RED SIX MILE HIGH CALIBER 177C

RED W SUNRISE TYPHOON 604H

RED SIX MILE LASSIE 317F

RED HOWE JOANNA 145C

RED SIX MILE LASSIE 377P

| Act BW 84 | Adj WW 800 | Adj YW 1230 | Calving Ease Level 2 | | | |
|------------------------|------------|-------------|-----------------------------|-----------|-------------|------------|
| | CED | BW | WW | YW | Milk | CEM |
| Angus One EPD | 4 | 1.4 | 55 | 89 | 20 | 6 |
| Percentile Rank | | | 7 | 11 | | |
| BOLT EPDs | 12 | -1.5 | 73 | 109 | 26 | 5.9 |

Lot 12 RED SIX MILE **MONSOON** 332K

Reg No: 2274804 / Tattoo: SIXM 332K / DOB: February 28 2022

RED SSS TYCOON 225E

RED U-2 RECKONING 149A

RED W SUNRISE TYPHOON 604H

RED SIX MILE MS PATHY 610C

RED HOWE JOANNA 145C

RED SIX MILE MS PATHY 514A

| Act BW 88 (ET) | Adj WW 811 | Adj YW 1336 | Calving Ease Level 2 | | | |
|------------------------|------------|-------------|-----------------------------|-----------|-------------|------------|
| | CED | BW | WW | YW | Milk | CEM |
| Angus One EPD | 8 | 1.2 | 50 | 87 | 23 | 13 |
| Percentile Rank | 14 | | 16 | 13 | | 1 |
| BOLT EPDs | 11.3 | -0.6 | 73 | 113 | 29 | 7.1 |

- sale feature, high indexing performance leader, rugged rancher design
- Donor female, Ms Pathy 610C was Designated Elite by the CAA in 2021 with a wean ratio of 109 on calves. She was a highlight female in GF 2021 and now resides at Skull Creek Ranch. Sons reside at Bar V Ranch, Bounty B Ranch and David Drader. One daughter sold through GF 2022 to the progressive Red Angus program at Riverside Angus.



Dam – Ms Pathy 610C





13

- wide based, stout hip, elite cow family, pen favourite
- Debbie 201H is a female that we expect big things from. She's an ET daughter from Debbie 377C, the donor dam and high selling female in Genetic Focus 2021. 201H has an excellent udder, big barrel and is easy to identify on pasture tours with her striking profile and ease of flesh. She weaned off this rascal with a 105 wean ratio.



Maternal Granddam - Debbie 377C

Lot 13 RED SIX MILE **TYPHOON** 131K

Reg No: 2259927 / Tattoo: SIXM 131K / DOB: February 10 2022

RED SSS TYCOON 225E

RED KJHT FCF ALIBI

RED W SUNRISE TYPHOON 604H

RED SIX MILE DEBBIE 201H

RED HOWE JOANNA 145C

RED SIX MILE DEBBIE DEE 377C

| | Act BW 84 | Adj WW 738 | Adj YW 1253 | Calving Ease Level 1 | | |
|------------------|------------|-------------|-------------|-----------------------------|-----------|------------|
| Angus One EPD | | | | CED | BW | CEM |
| Percentile Rank | | | | -1 | 2.6 | 4 |
| | | | | | | |
| | | | | WW | YW | Milk |
| | | | | 12 | 16 | 16 |
| BOLT EPDs | 7.5 | -0.2 | 69 | 108 | 27 | 1.9 |

Lot 14 RED SIX MILE **TYPHOON** 109K

Reg No: 2259774 / Tattoo: SIXM 109K / DOB: February 09 2022

RED SSS TYCOON 225E

RED SIX MILE ELEMENT 10E

RED W SUNRISE TYPHOON 604H

RED SIX MILE BAYBERRY 253H

RED HOWE JOANNA 145C

RED SIX MILE BAYBERRY 433D

| | Act BW 83 | Adj WW 759 | Adj YW 1190 | Calving Ease Level 3 | | |
|------------------|-----------|-------------|-------------|-----------------------------|-----------|------------|
| Angus One EPD | | | | CED | BW | CEM |
| Percentile Rank | | | | 3 | 1.3 | 5 |
| | | | | | | |
| | | | | WW | YW | Milk |
| | | | | 24 | 73 | 25 |
| BOLT EPDs | 12 | -0.6 | 72 | 106 | 25 | 5.2 |



14

- dark red, sensibly sized, balanced profile
- Bayberry 253H is a moderate statured Element daughter with a tight and tidy udder. She worked hard and raised this, her first calf, off with a 108 wean ratio.



Sire of lots 9 and 11 to 23 - Typhoon 604H

Lot 15

RED SIX MILE TYPHOON 382K

Reg No: 2267570 / Tattoo: SIXM 382K / DOB: March 08 2022

RED SSS TYCOON 225E

RED RRA ONE AND ONLY 733

RED W SUNRISE TYPHOON 604H

RED SIX MILE ALANA 139H

RED HOWE JOANNA 145C

RED U6 ALANA 13X

| Act BW 84 | Adj WW 720 | Adj YW 1248 | Calving Ease Level 3 | | | |
|-----------------|------------|-------------|----------------------|-----|------|-----|
| Angus One EPD | CED | BW | WW | YW | Milk | CEM |
| Percentile Rank | 3 | 1.3 | 61 | 97 | 18 | 5 |
| BOLT EPDs | 12.6 | -0.9 | 75 | 115 | 25 | 6.9 |

- big hipped, stout, trusted cow family
- Another female from the Alana cow family that produced High Calibre, among many other highlight bulls and females for us here at Six Mile. 139H raised this rascal off with a 109 wean ratio.



15



Maternal Granddam
Alana 13X

Lot 16

RED SIX MILE TYPHOON 347K

Reg No: 2267242 / Tattoo: SIXM 347K / DOB: March 03 2022

RED SSS TYCOON 225E

RED CRUMP POWDER RIVER 7787

RED W SUNRISE TYPHOON 604H

RED SIX MILE MARIA 214G

RED HOWE JOANNA 145C

RED SIX MILE MARIA 834E

| Act BW 85 | Adj WW 722 | Adj YW 1241 | Calving Ease Level 4 | | | |
|-----------------|------------|-------------|----------------------|-----|------|-----|
| Angus One EPD | CED | BW | WW | YW | Milk | CEM |
| Percentile Rank | 7 | 0.6 | 56 | 87 | 24 | 7 |
| BOLT EPDs | 10.7 | -0.5 | 78 | 120 | 27 | 6 |

- proud and flexible on the move, maternally driven pedigree, awesome body shape
- Maria 214G is a heavy milking, easy keeping Powder River daughter. She was campaigned successfully in 2021 with her first calf at foot and was named Reserve Grand Champion Female at CWA. Average wean index of 117 on 2 calves.



16



Dam
Maria 214G

Lot 17

RED SIX MILE TYPHOON 312K

Reg No: 2296180 / Tattoo: SIXM 312K / DOB: February 26 2022

RED SSS TYCOON 225E

RED SIX MILE VARSITY BLUES 14Z

RED W SUNRISE TYPHOON 604H

RED SIX MILE MS TAFFETA 142B

RED HOWE JOANNA 145C

RED YY TAFFETA 306N

| Act BW 52 | Adj WW 640 | Adj YW 1183 | Calving Ease Level 4+ | | | |
|-----------------|------------|-------------|-----------------------|----|------|------|
| Angus One EPD | CED | BW | WW | YW | Milk | CEM |
| Percentile Rank | 12 | -2 | 40 | 63 | 27 | 10.5 |
| BOLT EPDs | 3 | 8 | | | 16 | 7 |

- calving ease specialist, soggy made, deep rib and flank
- Donor dam Taffeta 142B needs little introduction. She is the Queen of the donor pen here at Six Mile where she boasts the title as the high earning cow on the ranch. Her daughters are crushing it in production (dam of Lot 9) and her sons always find their way into purebred breeding programs.



17



Dam
Ms Taffeta 142B



18

Lot 18 RED SIX MILE **TYPHOON** 111K

Reg No: 2259776 / Tattoo: SIXM 111K / DOB: February 09 2022

RED SSS TYCOON 225E

RED CC LAWMAN 32E

RED W SUNRISE TYPHOON 604H

RED SIX MILE SYRINGA 21H

RED HOWE JOANNA 145C

RED SIX MILE SYRINGA 30F

Act BW 80 Adj WW 763 Adj YW 1222 **Calving Ease Level 3**

| | CED | BW | WW | YW | Milk | CEM |
|------------------|-------------|-------------|-----------|------------|-----------|------------|
| Angus One EPD | 2 | 1.4 | 54 | 81 | 24 | 8 |
| Percentile Rank | | | 8 | 22 | | 19 |
| BOLT EPDs | 13.1 | -1.5 | 69 | 102 | 26 | 7.6 |

- stout pin set, big hip and top, soft rib
- Syringa 21H was one of our favorite first calvers of 2022. Larger framed, feminine fronted, milky, perfect level udder. We sadly lost her this winter it's always the good ones that die... This calf weaned off with a wean ratio of 109.



Maternal Granddam Lot 19- Rebecca 219C



Maternal Granddam Lot 20 - Sugrland 176S

Lot 19 RED SIX MILE **TYPHOON** 59K

Reg No: 2259718 / Tattoo: SIXM 59K / DOB: February 02 2022

RED SSS TYCOON 225E

RED NCJ COMING IN HOT 24E

RED W SUNRISE TYPHOON 604H

RED SIX MILE REBECCA 412H

RED HOWE JOANNA 145C

RED SIX MILE REBECCA 219C

Act BW 84 Adj WW 778 Adj YW 1269 **Calving Ease Level 2**

| | CED | BW | WW | YW | Milk | CEM |
|------------------|-------------|-------------|-----------|------------|-----------|------------|
| Angus One EPD | 3 | 2.7 | 59 | 106 | 29 | 5 |
| Percentile Rank | | | 4 | 2 | 7 | |
| BOLT EPDs | 11.8 | -0.5 | 76 | 116 | 28 | 6.9 |

- blood red, docile, black footed
- 412H is a moderate framed Comin In Hot daughter who raised this calf off with a 111 wean ratio.



20

Lot 20 RED SIX MILE **TYPHOON** 221K

Reg No: 2264074 / Tattoo: SIXM 221K / DOB: 18-Feb-22

RED SSS TYCOON 225E

RED NCJ COMIN IN HOT 24E

RED W SUNRISE TYCOON 604H

RED SIX MILE SUGARLAND 221H

RED HOW JOANNA 145C

RED BRYLOR GF SUGRLAND 176S

Act BW 68 Adj WW 693 Adj YW 1198 **Calving Ease Level 4**

| | CED | BW | WW | YW | Milk | CEM |
|------------------|-------------|-------------|-----------|-----------|-----------|------------|
| Angus One EPD | 8 | -0.5 | 46 | 77 | 27 | 9 |
| Percentile Rank | 15 | 20 | 25 | 30 | 20 | 15 |
| BOLT EPDs | 12.4 | -2.4 | 64 | 96 | 26 | 7.6 |

- docile, heifer bull option, long and smooth
- 221H is a powerful Coming in Hot Daughter out of donor 176S. She weaned this calf off with a 100 wean index.



— 21 —

Lot 21 RED SIX MILE **TYPHOON** 53K

Reg No: 2259712 / Tattoo: SIXM 53K / DOB: February 02 2022

RED SSS TYCOON 225E

RED RAINBOW ROLEX 15F

RED W SUNRISE TYPHOON 604H

RED SIX MILE LAKOTA 320H

RED HOWE JOANNA 145C

RED SIX MILE LAKOTA 95E

| Act BW 79 | Adj WW 799 | Adj YW 1298 | Calving Ease Level 2 to 3 | | | |
|------------------|------------|-------------|----------------------------------|-----|------|-----|
| | CED | BW | WW | YW | Milk | CEM |
| Angus One EPD | 2 | 2.4 | 70 | 106 | 21 | 7 |
| Percentile Rank | | | 1 | 2 | | 28 |
| BOLT EPDs | 12.9 | -1.4 | 74 | 110 | 27 | 7.6 |

- dark red, female maker, top 1% WW & YW
- 320H comes from the productive Lakota cow family. She represents the first Rolex daughter to calve and we are very impressed with their udder structure, mothering instincts and beautiful dark red color. She weaned 53K off with a wean ratio of 115.

Lot 23 RED SIX MILE **TYPHOON** 510K

Reg No: 2267834 / Tattoo: SIXM 510K / DOB: March 29 2022

RED SSS TYCOON 225E

RED PIE ON THE MARK 5424

RED W SUNRISE TYPHOON 604H

RED SIX MILE MS LASS 49F

RED HOWE JOANNA 145C

RED SIX MILE MS LASS 663A

| Act BW 76 | Adj WW 761 | Adj YW 1259 | Calving Ease Level 4+ | | | |
|------------------|------------|-------------|------------------------------|-----|------|-----|
| | CED | BW | WW | YW | Milk | CEM |
| Angus One EPD | 10 | -2.2 | 47 | 84 | 25 | 14 |
| Percentile Rank | | | 6 | 24 | 35 | 1 |
| BOLT EPDs | 15.2 | -3.9 | 69 | 107 | 25 | 8.3 |

- heifer bull deluxe, huge birth to yearling spread, top 25% in 11 EPD traits
- Ms. Lass 49F is a female who recently entered our donor program as a low birth option with an incredible udder. Natural calves have sold to Kevin Nelson and Horse Creek Ranch. She has a wean ratio of 105 on 3 natural calves. Look for her other two sons as lots 58 & 96.

Lot 22 RED SIX MILE **TYPHOON** 493K

Reg No: 2267830 / Tattoo: SIXM 493K / DOB: March 25 2022

RED SSS TYCOON 225E

RED U-2 RECKONING 149A

RED W SUNRISE TYPHOON 604H

RED SIX MILE BESSIE 501F

RED HOWE JOANNA 145C

RED BAR-E-L BESSIE 144B

| Act BW 92 | Adj WW 795 | Adj YW 1249 | Calving Ease Level 1 | | | |
|------------------|------------|-------------|-----------------------------|-----|------|-----|
| | CED | BW | WW | YW | Milk | CEM |
| Angus One EPD | -2 | 3.1 | 64 | 105 | 24 | 3 |
| Percentile Rank | | | 2 | 2 | | |
| BOLT EPDs | 9.9 | 0.4 | 76 | 115 | 26 | 5.5 |

- high performance and high indexing, heavy structured cow bull, large outlined
- Bessie 501F has one daughter that sold to Greg Slack. She has two sons in this sale with the other being Lot 114. She is a female who adds power and stature into her offspring. Wean ratio of 114 on 3 calves.

Lot 24 RED SIX MILE **INSIGHT** 176K

Reg No: 2260213 / Tattoo: SIXM 176K / DOB: February 14 2022

PVF INSIGHT 0129

RED MRLA UPLOAD 165E

SIX MILE INSIGHTFUL 791G

RED SIX MILE MARTA 454G

RED BAR-E-L GLORIA 87R

RED TOPLINE MARTA 807

| Act BW 80 | Adj WW 662 | Adj YW 1193 | Calving Ease Level 3 | | | |
|------------------|------------|-------------|-----------------------------|----|------|-----|
| | CED | BW | WW | YW | Milk | CEM |
| Angus One EPD | 5 | 0.2 | 32 | 56 | 28 | 2 |
| Percentile Rank | | | 31 | 32 | 11 | |
| BOLT EPDs | 9.2 | -0.5 | 54 | 85 | 19 | 4.4 |

- stretchy outline, smooth calving ease build
- 454G is a Marta cow who is working hard in production. Last year's son went to the Broken Arrow Youth Ranch. She has a wean ratio of 96 on 2 calves.

- long spined, intriguing pedigree, added frame
- 812A is a Designated Premier Dam since 2020. One son sold to Hadwin Cattle. Daughters have found homes at Walsh Farms, Bar Lazy TL and Bar LA Ranch. The Ms Dynamo name cow family redefines productivity and profitability at Six Mile. Fowler started his venture into the cattle industry and selected a Ms Dynamo female.



Sire of Lots 25 to 27 – Insightful 791G



Lot 26 RED SIX MILE **INSIGHT** 125K

Reg No: 2259919 / Tattoo: SIXM 125K / DOB: February 10 2022

PVF INSIGHT 0129

RED BRYLOR REDWOOD 50U

SIX MILE INSIGHTFUL 791G

RED SIX MILE MISS DYNAMO 812A

RED BAR-E-L GLORIA 87R

RED SIX MILE MISS DYNAMO 179Y

| Act BW 89 | Adj WW 782 | Adj YW 1284 | Calving Ease Level 1 | | | |
|------------------|------------|-------------|-----------------------------|-----|------|-----|
| Angus One EPD | CED | BW | WW | YW | Milk | CEM |
| Percentile Rank | -2 | 3.6 | 46 | 92 | 22 | 0 |
| BOLT EPDs | 9.4 | 0.4 | 67 | 112 | 24 | 6.3 |

Lot 27 RED SIX MILE **MR INSIGHT** 279K

Reg No: 2266719 / Tattoo: SIXM 279K / DOB: February 22 2022

PVF INSIGHT 0129

RED WEBER REFORM 618

SIX MILE INSIGHTFUL 791G

RED SIX MILE LAKOTO 279F

RED BAR-E-L GLORIA 87R

RED SIX MILE LAKOTO 35W

| Act BW 79 | Adj WW 656 | Adj YW 1345 | Calving Ease Level 3 | | | |
|------------------|------------|-------------|-----------------------------|----|------|-----|
| Angus One EPD | CED | BW | WW | YW | Milk | CEM |
| Percentile Rank | 7 | 0.1 | 50 | 91 | 27 | 10 |
| BOLT EPDs | 10.5 | -0.8 | 59 | 94 | 24 | 5.7 |

- ultra long-bodied, impressive EPD profile, scale crushing performance
- Lakoto 279F stems from the famous Lakota cow family that produced Game Face. She has one son working for Twin Creek Land & Cattle and a daughter at CK Red Angus. She is proving her worth in production with a wean ratio of 110 on 3 calves.



Maternal Grandsire – Reform 618





— 28 —

Lot 28 RED SIX MILE **INFERNO** 273K

Reg No: 2266710 / Tattoo: SIXM 273K / DOB: February 21 2022

RED BLAIR'S NAVIGATOR 37E RED SIX MILE BRUNSON 357B
RED MAR MAC LINCOLN 106H **RED SIX MILE HOLLY 197D**
 MAR MAC SIERA 12B RED TRIPLE PLAY HOLLY 12B

Act BW 100 Adj WW 799 Adj YW 1286 **Calving Ease Level 1**

| | CED | BW | WW | YW | Milk | CEM |
|------------------|-----------|------------|-----------|------------|-----------|------------|
| Angus One EPD | 2 | 3.1 | 50 | 91 | 26 | 6 |
| Percentile Rank | | | 16 | 9 | 25 | |
| BOLT EPDs | 10 | 1.3 | 68 | 108 | 29 | 6.1 |

- wide topped, powerfully constructed, bold and commanding presence
- 197D is a powerful producer who transmits muscle shape and herdbull character into her calves. Bulls have sold through previous bull sales to Jeff & Bonnie Resch, Horse Creek Ranch and Kevin Nelson. She has an average wean ratio of 113 on 6 calves.
- **Terms to be announced**



Dam – Holly 197D



Alternate View of Lot 28



Sire of Lots 28 to Lot 34 – Lincoln 106H

Unmatched Pen Presence

- dark red color, maternally oriented, sensible frame size, new intriguing pedigree
- 336H is feminine fronted, gorgeous uddered daughter of our Baneberry 33X donor cow. She represents the first Northbound daughters milking and we sure are impressed with their udder structure, teat placement and mothering ability.



Maternal Granddam – Baneberry 33X



Lot 29 RED SIX MILE **LINCOLN** 33K

Reg No: 2259564 / Tattoo: SIXM 33K / DOB: January 26 2022

RED BLAIR'S NAVIGATOR 37E RED 35CC NORTHBOUND F344
RED MAR MAC LINCOLN 106H **RED SIX MILE MS BANEBERRY 336H**
 MAR MAC SIERA 12B RED SOO LINE MS BANEBERRY 0033

| Act BW 72 | Adj WW 684 | Adj YW 1192 | Calving Ease Level 4 | | | |
|------------------|-------------|-------------|----------------------|------------|-----------|----------|
| | CED | BW | WW | YW | Milk | CEM |
| Angus One EPD | 5 | 0.8 | 47 | 85 | 22 | 2 |
| Percentile Rank | 31 | | 24 | 16 | | |
| BOLT EPDs | 14.6 | -2.4 | 61 | 103 | 27 | 8 |

Lot 30 RED SIX MILE **LINCOLN** 95K

Reg No: 2271351 / Tattoo: SIXM 95K / DOB: February 06 2022

RED BLAIR'S NAVIGATOR 37E RED SIX MILE FIFTH GEAR 275X
RED MAR MAC LINCOLN 106H **RED DURALTA 275X SUNSET 78C**
 MAR MAC SIERA 12B RED DURALTA 36W SUNSET 82Z

| Act BW 82 | Adj WW 746 | Adj YW 1268 | Calving Ease Level 3 | | | |
|------------------|-------------|-------------|----------------------|------------|-----------|------------|
| | CED | BW | WW | YW | Milk | CEM |
| Angus One EPD | 7 | 1 | 47 | 78 | 17 | 10 |
| Percentile Rank | 19 | | 24 | 28 | | 7 |
| BOLT EPDs | 11.9 | -1.4 | 65 | 107 | 21 | 6.3 |

- dark red shag, level spine and hip, striking from any angle
- 78C is a dark red, big-bodied female with an exceptional udder and big square feet. Sons have sold to Bar V Ranch and Kelly Vandorn and she has a daughter working at Diamond T Cattle.



Dam – Sunset 78C





Dam
Barrett 24A



Maternal Granddam
Lassie 377P

Lot 31 RED SIX MILE LINCOLN 141K

Reg No: 2259942 / Tattoo: SIXM 141K / DOB: February 11 2022

RED BLAIR'S NAVIGATOR 37E
RED MAR MAC LINCOLN 106H
MAR MAC SIERA 12B

RED SIX MILE GAME FACE 164Y
RED L83 BARRETT 24A
RED L83 BARRET 143

Act BW 86 Adj WW 694 Adj YW 1159 **Calving Ease Level 3**

| | CED | BW | WW | YW | Milk | CEM |
|-----------------|------|------|----|----|------|-----|
| Angus One EPD | 7 | 1 | 45 | 77 | 25 | 7 |
| Percentile Rank | 19 | | 31 | 30 | 35 | 28 |
| BOLT EPDs | 11.9 | -0.9 | 60 | 97 | 21 | 6.9 |

- shapely build, herd bull character, moderate chunk
- If you want your next herd-sire to be backed by a phenotypically beautiful female with an impressive track record then stop here! 24A has done it all! She has daughters working in the purebred herds of Rivers Edge, O'Faellan Farms and KT Ranches. Sons have sold to Robert Eastley and Rolling R Ranch. 8 calves for an average wean ratio of 95.

Lot 32 RED SIX MILE LINCOLN 266K

Reg No: 2266694 / Tattoo: SIXM 266K / DOB: February 20 2022

RED BLAIR'S NAVIGATOR 37E
RED MAR MAC LINCOLN 106H
MAR MAC SIERA 12B

RED SIX MILE HIGH CALIBER 177C
RED SIX MILE LASSIE LEE 222F
RED SIX MILE LASSIE 377P

Act BW 84 Adj WW 661 Adj YW 1158 **Calving Ease Level 2**

| | CED | BW | WW | YW | Milk | CEM |
|-----------------|------|------|----|----|------|-----|
| Angus One EPD | 6 | 1.4 | 37 | 67 | 22 | 6 |
| Percentile Rank | 24 | | | | | |
| BOLT EPDs | 12.1 | -1.5 | 53 | 89 | 23 | 6.2 |

- big muscle and wide topped, maternally oriented
- Lassie 222F is a flush sister to the dam of Lot 11. These Lassie females are so maternal in their make-up with excellent mothering ability and great udders. One son sold to M Bar Ranch. Wean ratio of 99 on 3 calves.

Lot 33 RED SIX MILE LINCOLN 142K

Twin Reg No: 2259943 / Tattoo: SIXM 142K / DOB: February 11 2022

RED BLAIR'S NAVIGATOR 37E
RED MAR MAC LINCOLN 106H
MAR MAC SIERA 12B

RED WPRA LEGACY A-314
RED BAR-E-L MEG 170D
RED BAR-E-L MEG 85N

Act BW 66 Adj WW 658 Adj YW 1031 **Calving Ease Level 2**

| | CED | BW | WW | YW | Milk | CEM |
|-----------------|------|------|----|----|------|-----|
| Angus One EPD | 4.5 | 1.6 | 42 | 69 | 23 | 7 |
| Percentile Rank | | | | | | 28 |
| BOLT EPDs | 11.6 | -0.5 | 62 | 99 | 22 | 7 |

- highly maternal pedigree, shaggy, low input frame and body
- Meg 170D has two daughters retained in herd. All of our Meg females exhibit nearperfect udders, great maternal lineage backs this bull. An average wean ratio of 100 on 5 calves.

Lot 34 RED SIX MILE LINCOLN 339K

Reg No: 2274843 / Tattoo: SIXM 339K / DOB: March 01 2022

RED BLAIR'S NAVIGATOR 37E
RED MAR MAC LINCOLN 106H
MAR MAC SIERA 12B

RED MRLA NEW ERA 87Y
CC PANTERA 6E
CC PANTERA 32A

Act BW 90 Adj WW 659 Adj YW 1201 **Calving Ease Level 2**

| | CED | BW | WW | YW | Milk | CEM |
|-----------------|------|-----|----|-----|------|-----|
| Angus One EPD | 7 | 1.4 | 41 | 75 | 24 | 12 |
| Percentile Rank | 19 | | | 34 | | 2 |
| BOLT EPDs | 12.2 | 0 | 64 | 107 | 23 | 7.2 |

- cherry red shag, long bodied, free and easy moving
- 6E is a larger framed female who came to us in the Cactus Coulee acquisition. One daughter is retained in herd.



— 35 —

Lot 35 RED SIX MILE **RED BOX** 23K

Reg No: 2298688 / Tattoo: SIXM 23K / DOB: January 21 2022

RED SLGN WIDELOAD 920W RED SIX MILE WIND CHILL 828W
 RED MANN RED BOX 55C RED SIX MILE MARTA 300Y
 RED PELTON MISS AJA 0839U RED BAR-E-L MARTA 39H

| | Act BW 90 | Adj WW 764 | Adj YW 1361 | Calving Ease Level 1 | | |
|-----------------|-----------|------------|-------------|----------------------|---------|-------|
| Angus One EPD | CED -0.5 | BW 2.6 | WW 43 | YW 70 | Milk 33 | CEM 5 |
| Percentile Rank | | | | | 2 | |
| BOLT EPDs | 12 | 1.6 | 63 | 91 | 34 | 7 |



Dam - Marta 300Y



Maternal Sister- Marta 11H

- larger framed option, long spined, pen heavyweight
- Marta 300Y was a superior donor dam for us here at Six Mile who was designated Elite by the CAA. She exhibited impeccable feet, a gorgeous udder, impressive rib shape and was long-spined. Her production record truly speaks to her maternal superiority-sons selling to Triple Play Cattle, Sunberry Valley, Paul Murray Farms, M Bar Ranch and Greg Slack. Her daughters are producing at a very high level in our herd as well as at Niobrara, Denver & Becky Leech & Twin Creek Farms and Hank Hamels. Congratulations to Blairswest on exhibiting Senior Champion Heifer Calf at Agribition 2022 with a Marta 300Y x John Wick daughter and topping the Opportunity Knocks Sale Red Heifer Calves at \$18,000.



36

36

- big time beef bull, female making pedigree, oozing with muscle mass
- Leah 20E is a moderate framed, hairy, near perfect uddered Outsider daughter. Sons have sold through previous sales to Jarrod Kirby and Horse Creek Ranch. Average wean index of 100 on 4 calves.



Alternate View of Lot 36

Lot 36 RED SIX MILE ROUSH 183K

Reg No: 2260216 / Tattoo: SIXM 183K / DOB: February 15 2022
 RED MANN RED BOX 55C RED SIX MILE OUTSIDER 387C
RED SIX MILE ROUSH 747G **RED SIX MILE LEAH 20E**
 RED TOPLINE MARTA 807 RED GLESBAR LEAH 60Z

| | Act BW 92 | Adj WW 707 | Adj YW 1238 | Calving Ease Level 1 | | | |
|------------------|------------|------------|-------------|----------------------|-----------|----------|-------|
| Angus One EPD | | CED 3 | BW 2.1 | WW 45 | YW 83 | Milk 27 | CEM 5 |
| Percentile Rank | | | | 31 | 19 | 16 | |
| BOLT EPDs | 8.5 | 0.5 | 53 | 81 | 25 | 4 | |

Lot 37 RED SIX MILE ROUSH 280K

Reg No: 2266721 / Tattoo: SIXM 280K / DOB: February 22 2022
 RED MANN RED BOX 55C RED U-2 RENOWN 193C
RED SIX MILE ROUSH 747G **RED SIX MILE MEG 915E**
 RED TOPLINE MARTA 807 RED BAR-E-LAB MEG 169Z

| | Act BW 92 | Adj WW 726 | Adj YW 1209 | Calving Ease Level 1 | | | |
|------------------|------------|------------|-------------|----------------------|-----------|------------|--------|
| Angus One EPD | | CED 1 | BW 2.5 | WW 48 | YW 89 | Milk 30 | CEM 11 |
| Percentile Rank | | | | 21 | 11 | 4 | 4 |
| BOLT EPDs | 8.9 | 1 | 67 | 99 | 30 | 4.9 | |



37

37

- added muscle mass, predictable genetic package, bold and opened up
- Meg 915E is a CAA Elite Dam as of 2023. She gained this accolade by having 4 calves with an average wean ratio of 109. Sons are working for Spruce Meadow Farms and Batho Farms Ltd. She is truly gorgeous to admire with a picture perfect udder, soggy belly and all in a moderate package.



Dam - Meg 915E



Lot 38 RED SIX MILE **ROUSH** 283K

Reg No: 2266730 / Tattoo: SIXM 283K / DOB: February 22 2022

RED MANN RED BOX 55C
RED SIX MILE ROUSH 747G
 RED TOPLINE MARTA 807

RED ANCHOR 1 DUKE 177U
RED BAR-E-L KASSIE 165A
 RED BAR-E-L KASSIE 012G

| Act BW 87 | Adj WW 620 | Adj YW 1144 | Calving Ease Level 2 | | | |
|------------------|------------|-------------|-----------------------------|----|------|-----|
| | CED | BW | WW | YW | Milk | CEM |
| Angus One EPD | 4 | 1.4 | 39 | 59 | 23 | 7 |
| Percentile Rank | | | | | | 28 |
| BOLT EPDs | 12.9 | -1.1 | 46 | 69 | 27 | 6.9 |

- sound moving, easy keeping rib and body design, very complete and balanced phenotype
- 165A is from the famed "Kassie" cow family. She came to us through the Bar EL herd purchase. Since joining the Six Mile cow herd, she has sons working for Monea Acres, Oulton Farms and Leon Coopriider. She also has one daughter retained in herd. Average wean ratio of 100 on 8 calves.



Lot 39 RED SIX MILE **ROUSH** 372K

Reg No: 2267567 / Tattoo: SIXM 372K / DOB: March 07 2022

RED MANN RED BOX 55C
RED SIX MILE ROUSH 747G
 RED TOPLINE MARTA 807

RED U-2 RECKONING 149A
RED SIX MILE PRIDE 161F
 RED SIX MILE PRIDE 61D

| Act BW 70 | Adj WW 695 | Adj YW 1219 | Calving Ease Level 3 | | | |
|------------------|------------|-------------|-----------------------------|----|------|-----|
| | CED | BW | WW | YW | Milk | CEM |
| Angus One EPD | 5 | -1 | 47 | 83 | 18 | 13 |
| Percentile Rank | 31 | 16 | 24 | 19 | | 1 |
| BOLT EPDs | 13 | -1.7 | 62 | 99 | 28 | 8 |

- stout hipped, bold and shapely muscle design, added herd-bull character
- 161F is a hard-working Reckoning daughter who always brings quality calves home at weaning time. A daughter was selected in 2021 by the great people at Riverside Farms. She has son working at Horse Creek. Wean ratio of 103 on 3 calves.

Lot 40 RED SIX MILE **ROUSH** 174K

Reg No: 2260212 / Tattoo: SIXM 174K / DOB: February 14 2022

RED MANN RED BOX 55C
RED SIX MILE ROUSH 747G
 RED TOPLINE MARTA 807

SIX MILE BARRICADE 147B
RED SIX MILE MS PRIDE 296G
 SIX MILE ZORAS PRIDE 956E

| Act BW 86 | Adj WW 708 | Adj YW 1143 | Calving Ease Level 1 | | | |
|------------------|------------|-------------|-----------------------------|-----|------|-----|
| | CED | BW | WW | YW | Milk | CEM |
| Angus One EPD | 0 | 2.5 | 60 | 101 | 27 | 0 |
| Percentile Rank | | | 3 | 3 | 16 | |
| BOLT EPDs | 10.2 | 0.3 | 64 | 97 | 29 | 4 |

- moderate framed but long spined, big footed
- 296G has an outcross pedigree that goes back to the black female maker – Connealy Complete. She has a wean ratio of 103 on 2 calves.

Lot 41 RED SIX MILE **REDWING** 311K

Reg No: 2267208 / Tattoo: SIXM 311K / DOB: February 26 2022

RED MANN RED BOX 55C
RED SIX MILE REDWING 145H
 RED TOPLINE MARTA 807

RED SIX MILE GAME FACE 164Y
RED SIX MILE SEXY SYRINGA 151B
 RED SIX MILE SEXY SYRINGA 264X

| Act BW 86 | Adj WW 643 | Adj YW 1108 | Calving Ease Level 2 to 3 | | | |
|------------------|------------|-------------|----------------------------------|----|------|-----|
| | CED | BW | WW | YW | Milk | CEM |
| Angus One EPD | 6 | 0.1 | 43 | 75 | 25 | 1 |
| Percentile Rank | 24 | 30 | | 34 | 35 | |
| BOLT EPDs | 10.2 | 0 | 63 | 99 | 27 | 4.6 |

- pedigree stacked with maternal greats, expressive muscle shape, bold center body
- Syringa 151B is arguably the most phenotypically attractive female on the ranch. Dark cherry red color, tons of hair, exceptional udder and milk production and a robust rib-cage. Sons are owned by Trevor Blair, Twin Curves Ranch and RA Bentley. One daughter is retained in her as the dam to Lot 74. Average wean ratio of 104 on 8 calves.



42

42

- soft sided, burly build, potent cow family, cowman's kind
- Frado 213F is gunning to be the next great Frado donor female here at Six Mile. She has raised three super high-quality daughters in her first years in production. Sadly, her first heifer calf was lost after weaning, but was a definite favorite around the ranch. Her second calf resides in the very capable hands of young Shelten Grabler as his 4-H heifer. She then cranked out this loose made rugged hersire prospect who may be her best work to date! Wean ratio of 112 on 3 calves.



Dam - Miss Frado 213F

Lot **42** RED SIX MILE **STARK** 161K

Reg No: 2259975 / Tattoo: SIXM 161K / DOB: February 13 2022

BLACK WHEEL DRACARYS 178E

RED NORTHLINE ROB ROY 122K

RED WHEEL STARK 67G

RED SIX MILE MISS FRADO 213F

RED WHEEL ROSE 66C

RED BAR-E-L FRADO 209U

Act BW 86 Adj WW 789 Adj YW 1207 **Calving Ease Level 1**

| | CED | BW | WW | YW | Milk | CEM |
|------------------|-----------|-------------|-----------|------------|-----------|----------|
| Angus One EPD | -3 | 3.7 | 63 | 98 | 19 | 8 |
| Percentile Rank | | | 2 | 4 | | 19 |
| BOLT EPDs | 10 | -0.1 | 71 | 116 | 31 | 8 |

Lot **43** RED SIX MILE **STARK** 146K

Reg No: 2259947 / Tattoo: SIXM 146K / DOB: February 12 2022

BLACK WHEEL DRACARYS 178E

STEWART PANTHER 19X

RED WHEEL STARK 67G

RED CC SHOWGIRL 30A

RED WHEEL ROSE 66C

RED QW SHOWGIRL 141R

Act BW 86 Adj WW 711 Adj YW 1207 **Calving Ease Level 2 to 3**

| | CED | BW | WW | YW | Milk | CEM |
|------------------|-------------|-------------|-----------|------------|-----------|------------|
| Angus One EPD | 5 | 0.1 | 44 | 76 | 23 | 5 |
| Percentile Rank | 31 | 30 | 34 | 32 | | |
| BOLT EPDs | 12.5 | -0.2 | 72 | 119 | 23 | 9.4 |



43

43

- bold and open skeleton, wide chest floor, solid foot, soft rib and flank
- 30A is a powerhouse cow with outcross genetics in her lineage. She came to us from the Cactus Coulee herd acquisition and has impressed us on her first two calves! She has a commendable wean index of 101 on 7 calves.



Sire of Lots 1 and 42 to 49 - Stark 67G

- superior foot quality, loose rugged herdbull look, high quality
- 524F is a hard-working Custom Made daughter who has an impressive wean ratio of 112 on 3 calves. She is dark red in color, perfect in her foot shape, exhibits a phenomenal udder and is ultra-long bodied. The Baneberry cow family have done an exceptional job in production here at Six Mile. Her first son was selected by Kai Lee as a sure-fire heifer bull and her Northbound daughter dropped a beautiful udder this winter.



Dam – Ms Baneberry 524F



Lot 44 RED SIX MILE **STARK** 507K

Reg No: 2267826 / Tattoo: SIXM 507K / DOB: March 28 2022

BLACK WHEEL DRACARYS 178E
RED WHEEL STARK 67G
 RED WHEEL ROSE 66C

RED SIX MILE CUSTOM MADE 505C
RED SIX MILE MS BANEBERRY 524F
 RED SOO LINE MS BANEBERRY 0033

| Act BW 88 | Adj WW 747 | Adj YW 1183 | Calving Ease Level 2 | | | |
|------------------|------------|-------------|-----------------------------|-----|------|-----|
| | CED | BW | WW | YW | Milk | CEM |
| Angus One EPD | -2 | 3.7 | 56 | 90 | 24 | 6 |
| Percentile Rank | | | 6 | 10 | | |
| BOLT EPDs | 10.3 | 0 | 72 | 112 | 29 | 7.5 |

Lot 45 RED SIX MILE **STARK** 233K

Reg No: 2264083 / Tattoo: SIXM 233K / DOB: February 19 2022

BLACK WHEEL DRACARYS 178E
RED WHEEL STARK 67G
 RED WHEEL ROSE 66C

RED HALL'S BARRY 040C
RED SIX MILE RUBY 233E
 RED SVR RUBY 16P

| Act BW 91 | Adj WW 709 | Adj YW 1145 | Calving Ease Level 2 | | | |
|------------------|------------|-------------|-----------------------------|-----|------|-----|
| | CED | BW | WW | YW | Milk | CEM |
| Angus One EPD | 0 | 2.6 | 45 | 69 | 31 | 5 |
| Percentile Rank | | | 31 | | 3 | |
| BOLT EPDs | 9.3 | 0.6 | 63 | 102 | 28 | 5.5 |

- wide gauged, square at the ground, loose hided
- Ruby 233E is a show-stopper in our herd. She always catches your eye while touring with her dark red color, sweeping rib-cage, beautiful udder and great feet. Her John Wick son sold through our 2021 Bull Sale is now the calving ease specialist at Shiloh Cattle. Wean ratio of 111 on 3 calves.



Dam – Ruby 233E





— 46 —

Lot 46 RED SIX MILE **STARK** 138K

Reg No: 2259936 / Tattoo: SIXM 138K / DOB: February 11 2022

BLACK WHEEL DRACARYS 178E

RED U-2 RECKONING 149A

RED WHEEL STARK 67G

RED SIX MILE LASS 309E

RED WHEEL ROSE 66C

RED SIX MILE LASS 400C

Act BW 90 Adj WW 659 Adj YW 1159 **Calving Ease Level 1**

| | CED | BW | WW | YW | Milk | CEM |
|------------------|------------|------------|-----------|------------|-----------|------------|
| Angus One EPD | -5 | 3.3 | 45 | 72 | 22 | 4 |
| Percentile Rank | | | 31 | | | |
| BOLT EPDs | 9.8 | 0.3 | 66 | 111 | 25 | 7.3 |

- proud fronted, big muscle shape and testicular development, excellent foot design
- 309E has been a bull producing machine with sons selling through our bull sales to M Bar Ranch and MGM Red Angus. She is quickly becoming one of our favorite Reckoning daughters with her elite angus front-end, dark cherry red color and excellent teat size and placement. Wean ratio of 98 on 4 calves.

Lot 48 RED SIX MILE **STARK** 191K

Reg No: 2260221 / Tattoo: SIXM 191K / DOB: February 15 2022

BLACK WHEEL DRACARYS 178E

RED RMJ REDMAN 1T

RED WHEEL STARK 67G

RED CC DUCHESS 9Y

RED WHEEL ROSE 66C

RED STEWART DUCHESS 817U

Act BW 84 Adj WW 668 Adj YW 1103 **Calving Ease Level 3**

| | CED | BW | WW | YW | Milk | CEM |
|------------------|-------------|-------------|-----------|------------|-----------|------------|
| Angus One EPD | 3 | 1 | 48 | 83 | 26 | 2 |
| Percentile Rank | | | 21 | 19 | 25 | |
| BOLT EPDs | 11.7 | -1.3 | 59 | 101 | 23 | 8.1 |

- sound functional design, very complete, bold and open center body
- 9Y is a model red angus cow by our standards here at Six Mile. She came to us in the Cactus Coulee herd acquisition and has had daughters selling to Duff Cattle, Las Rojas and most recently a daughter sold in last year's Bull Sale for \$10,000 to Mexico.



— 47 —

Lot 47 RED SIX MILE **STARK** 472K

Reg No: 2267762 / Tattoo: SIXM 472K / DOB: March 22 2022

BLACK WHEEL DRACARYS 178E

RED SIX MILE WARCRAFT 254Z

RED WHEEL STARK 67G

RED SIX MILE LARKABA LASS 22D

RED WHEEL ROSE 66C

RED GLY LARKABA LASSIE 111T

Act BW 91 Adj WW 706 Adj YW 1215 **Calving Ease Level 2**

| | CED | BW | WW | YW | Milk | CEM |
|------------------|-------------|------------|-----------|------------|-----------|------------|
| Angus One EPD | 1 | 1.8 | 39 | 63 | 29 | 2 |
| Percentile Rank | | | | | 7 | |
| BOLT EPDs | 10.2 | 0.3 | 71 | 116 | 25 | 8.2 |

- long-bodied, super correct structure, soft sided and deep flanked
- Larkaba 22D is owned by our favorite go to employee Eric Smith of Breed Creek. She is a gorgeous female with lots of depth of body, length of spine and a great udder. Sons are working for Ryan Smith and Gavelin Farms. She has one daughter retained in herd. Wean ratio of 107 on 5 calves.

Lot 49 RED SIX MILE **STARK** 364K

Reg No: 2267616 / Tattoo: SIXM 364K / DOB: March 05 2022

BLACK WHEEL DRACARYS 178E

RED SIX MILE GAME FACE 164Y

RED WHEEL STARK 67G

RED CC BLACKBIRD 21E

RED WHEEL ROSE 66C

RED LAURON BLACKBIRD 78Y

Act BW 92 Adj WW 597 Adj YW 1187 **Calving Ease Level 1**

| | CED | BW | WW | YW | Milk | CEM |
|------------------|-------------|-------------|-----------|------------|-----------|------------|
| Angus One EPD | -1 | 2.6 | 53 | 94 | 30 | 9 |
| Percentile Rank | | | 10 | 7 | 4 | 12 |
| BOLT EPDs | 10.4 | -0.6 | 62 | 100 | 23 | 6.7 |

- expressive hip shape, wide based, loose hided
- 21E is big-bodied and extremely eye catching. She was acquired in the Cactus Coulee herd purchase and has another son in this sale as Lot 100.

"That heifer we bought is an awesome mother. Calving ease for sure. Thank you guys so much for making this work!" Eric Singleton IN

Lot 50 RED SIX MILE **PARABELLUM** 182K

Reg No: 2282851 / Tattoo: SIXM 182K / DOB: February 15 2022

RED SIX MILE JOHN WICK 882E

RED SIX MILE WARCRAFT 254Z

RED SIX MILE PARABELLUM 675G

RED SIX MILE MS PRIDE 99F

RED SIX MILE KURUBA 712A

RED JEFFRIES MS PRIDE A324

| Act BW 90 | Adj WW 684 | Adj YW 1237 | Calving Ease Level 2 to 3 | | | |
|------------------|-------------|-------------|----------------------------------|-----------|-----------|------------|
| | CED | BW | WW | YW | Milk | CEM |
| Angus One EPD | 5 | 0.9 | 40 | 80 | 25 | 11 |
| Percentile Rank | 31 | | | 24 | 35 | 4 |
| BOLT EPDs | 11.3 | 0.1 | 55 | 94 | 29 | 8.7 |

- striking profile, added stretch and frame, long hiped
- 99F is beautiful female that brings home quality calves at weaning each year. She has two extremely high-quality daughters working in our herd. Wean index of 101 on 3 calves.



50



Dam
Ms Pride 99F

Lot 51 RED SIX MILE **PARABELLUM** 319K

Reg No: 2267213 / Tattoo: SIXM 319K / DOB: February 27 2022

RED SIX MILE JOHN WICK 882E

RED SIX MILE TAURUS 519A

RED SIX MILE PARABELLUM 675G **RED SIX MILE SEXY SYRINGA 466D**

RED SIX MILE KURUBA 712A

RED SIX MILE SEXY SYRINGA 264X

| Act BW 84 | Adj WW 695 | Adj YW 1171 | Calving Ease Level 2 | | | |
|------------------|-------------|-------------|-----------------------------|-----------|-----------|------------|
| | CED | BW | WW | YW | Milk | CEM |
| Angus One EPD | 1 | 1.5 | 46 | 84 | 31 | 7 |
| Percentile Rank | | | 27 | 17 | 3 | 28 |
| BOLT EPDs | 12.6 | -0.1 | 59 | 93 | 31 | 7.5 |

- big barreled, heavy structured with an awesome foot, wide muzzle and jaw
- 466D is beautiful female from the Syringa cow family. She exhibits a great udder, lots of depth of rib and is stout featured. Sons have sold to Danny Dube and Gerald Gropp. She has two daughters retained in herd. We sadly lost 466D this winter, so this is the last of her progeny in our herd. Average wean index of 105 on 5 calves.



51



Dam
Syringa 466D

Lot 52 RED SIX MILE **PARABELLUM** 220K

Reg No: 2273919 / Tattoo: SIXM 220K / DOB: February 18 2022

RED SIX MILE JOHN WICK 882E

RED SIX MILE INTRIGUE 348X

RED SIX MILE PARABELLUM 675G

RED JEFFRIES MS PRIDE A324

RED SIX MILE KURUBA 712A

RED JEFFRIES W577

| Act BW 74 | Adj WW 727 | Adj YW 1207 | Calving Ease Level 4 | | | |
|------------------|-------------|-------------|-----------------------------|------------|-----------|------------|
| | CED | BW | WW | YW | Milk | CEM |
| Angus One EPD | 10 | -0.9 | 50 | 94 | 34 | 13 |
| Percentile Rank | 7 | 17 | 16 | 7 | 1 | 1 |
| BOLT EPDs | 14.3 | -1.9 | 60 | 103 | 28 | 9.8 |

- huge birth to yearling spread, heifer friendly, proven cow family
- Pride 324A has been a great producer for us here at Six Mile. Sons have landed into the operations of Harvey & Shawna Hind, Spencer Kirby and Wangen Cattle. Two daughters have been retained in herd, one being 99F the dam of Lot 50. Wean ratio of 99 on 8 calves.



52



Maternal Brother
Barry 543H



53



Dam of Lot 53 – Alana 301G

Lot 53 RED SIX MILE **PARABELLUM** 112K

Reg No: 2259777 / Tattoo: SIXM 112K / DOB: February 09 2022

RED SIX MILE JOHN WICK 882E

RED CRUMP POWDER RIVER 7787

RED SIX MILE **PARABELLUM** 675G

RED SIX MILE **ALANA** 301G

RED SIX MILE KURUBA 712A

RED SIX MILE **ALANA** 50E

| Act BW 82 | Adj WW 729 | Adj YW 1243 | Calving Ease Level 3 | | | |
|------------------------|------------|-------------|-----------------------------|-----------|-------------|------------|
| | CED | BW | WW | YW | Milk | CEM |
| Angus One EPD | 5 | 0.5 | 58 | 96 | 28 | 6 |
| Percentile Rank | 31 | | 4 | 5 | 11 | |
| BOLT EPDs | 13.2 | -0.8 | 63 | 104 | 34 | 7.9 |

- sale feature, dark red, shapely, masculine herdsire look, top 5% WW & YW,
- From the Alana cow family, who are known for their superior productivity, Alana 301G is dark red female, with an elite look, great udder with ample milk production. She has a wean ratio of 110 on 2 calves. We are very excited for her future here at 6M.

Lot 54 RED SIX MILE **PARABELLUM** 105K

Twin Reg No: 2259767 / Tattoo: SIXM 105K / DOB: February 08 2022

RED SIX MILE JOHN WICK 882E

RED CRUMP POWDER RIVER 7787

RED SIX MILE **PARABELLUM** 675G

RED SIX MILE **MS LARKABA** 545G

RED SIX MILE KURUBA 712A

RED SIX MILE **LARKABA** LASS 22D

| Act BW 70 | Adj WW 692 | Adj YW 1180 | Calving Ease Level 2 | | | |
|------------------------|------------|-------------|-----------------------------|-----------|-------------|------------|
| | CED | BW | WW | YW | Milk | CEM |
| Angus One EPD | 1 | 0.9 | 44 | 76 | 29 | 4 |
| Percentile Rank | | | 34 | 32 | 7 | |
| BOLT EPDs | 12.5 | -0.6 | 63 | 104 | 34 | 8.3 |

- long and level, athletic on the move, superior maternal worth
- Larkaba 545G is a tanky, heavy milking, low maintenance, fertile cow that raises heavy weaning calves. Her first heifer calf was a \$14,500 selection by Glen Gable and 545G boasts a 107 Wean Ratio on her first two calves.

Lot 55 RED SIX MILE **PARABELLUM** 478K

Reg No: 2275029 / Tattoo: SIXM 478K / DOB: March 23 2022

RED SIX MILE JOHN WICK 882E

RED SIX MILE QUEST 117Y

RED SIX MILE **PARABELLUM** 675G

RED SIX MILE **LAKOTA** 848A

RED SIX MILE KURUBA 712A

RED SIX MILE **LAKOTA** 113Y

| Act BW 90 (ET) | Adj WW 699 | Adj YW 1115 | Calving Ease Level 2 | | | |
|------------------------|------------|-------------|-----------------------------|-----------|-------------|------------|
| | CED | BW | WW | YW | Milk | CEM |
| Angus One EPD | 0 | 1.6 | 46 | 74 | 24 | 0 |
| Percentile Rank | | | 27 | | | |
| BOLT EPDs | 12.3 | -0.6 | 54 | 94 | 32 | 6.5 |

- big hip and heavy structure, wide chested and bold sprung
- Lakota 848A is a donor female in our program that comes from the same cow family as the elite female, Lakota 112Y at Las Rojas. 848A is easy to spot on a pasture tour with her expansive rib-cage, impeccable udder and feminine front end. Sons have sold to Ferme D.E.M Migneault and Spittalburn Farms. We have daughters retained in herd. Average wean ratio of 106 on natural calves.



Lot 56 RED SIX MILE **PARABELLUM** 228K

Reg No: 2271360 / Tattoo: SIXM 228K / DOB: February 18 2022

RED SIX MILE JOHN WICK 882E

SIX MILE BARRICADE 147B

RED SIX MILE PARABELLUM 675G

SIX MILE MS OAKLEAF 268G

RED SIX MILE KURUBA 712A

SIX MILE MS OAKLEAF 509D

| Act BW 84 | Adj WW 665 | Adj YW 1055 | Calving Ease Level 2 | | | |
|------------------|------------|-------------|-----------------------------|----|------|-----|
| | CED | BW | WW | YW | Milk | CEM |
| Angus One EPD | 0 | 1.9 | 51 | 83 | 23 | 4 |
| Percentile Rank | | | 14 | 19 | | |
| BOLT EPDs | 13.5 | -0.6 | 61 | 99 | 26 | 8.7 |

- eye catching, big backed, outcross pedigree
- Visually, 268G is a beautiful Black-Red Carrier female with a picture-perfect udder design, adequate rib and body with high maternal instincts. Her pedigree is extremely unique for the Red Angus gene pool.

Lot 58 RED SIX MILE **MR OAK** 222K

Reg No: 2280697 / Tattoo: SIXM 222K / DOB: February 18 2022

RED SIX MILE JOHN WICK 882E

RED PIE ON THE MARK 5424

RED SIX MILE MOSSY OAK 175H

RED SIX MILE MS LASS 49F

RED SIX MILE MISS LARK 225E

RED SIX MILE MS LASS 663A

| Act BW 68 (ET) | Adj WW 622 | Adj YW 1120 | Calving Ease Level 4+ | | | |
|------------------|------------|-------------|------------------------------|-----|------|------|
| | CED | BW | WW | YW | Milk | CEM |
| Angus One EPD | 12.5 | -1.6 | 47 | 89 | 26 | 13.5 |
| Percentile Rank | 3 | 10 | 24 | 12 | 34 | 1 |
| BOLT EPDs | 15.4 | -3.5 | 70 | 117 | 31 | 9.7 |

- heifer bull specialist, streamline design, top 10% CE, BW, MCE
- Ms. Lass 49F is a female who recently entered our donor program as a low birth option with an incredible udder. Natural calves have sold to Kevin Nelson and Horse Creek Ranch. She has a wean ratio of 105 on 3 natural calves. Look for her other two sons as lots 23 & 96

Lot 57 RED SIX MILE **MR OAK** 186K

Reg No: 2266649 / Tattoo: SIXM 186K / DOB: February 15 2022

RED SIX MILE JOHN WICK 882E

RED CC LAWMAN 32E

RED SIX MILE MOSSY OAK 175H

RED SIX MILE BRIDGET 518H

RED SIX MILE MISS LARK 225E

RED SIX MILE BRIDGET 987A

| Act BW 77 | Adj WW 702 | Adj YW 1164 | Calving Ease Level 3 to 4 | | | |
|------------------|------------|-------------|----------------------------------|-----|------|-----|
| | CED | BW | WW | YW | Milk | CEM |
| Angus One EPD | 8 | 1.1 | 46 | 81 | 20 | 8 |
| Percentile Rank | 14 | | 27 | 22 | | 19 |
| BOLT EPDs | 13.1 | -1.3 | 69 | 109 | 29 | 8.7 |

- dark thick hair coat, sound and free moving, balanced
- 518H is a larger framed, hairy Lawman daughter who weaned this guy off with a 100 wean ratio.

Lot 59 RED SIX MILE **MR OAK** 327K

Reg No: 2274820 / Tattoo: SIXM 327K / DOB: February 28 2022

RED SIX MILE JOHN WICK 882E

RED HALL'S BARRY 040C

RED SIX MILE MOSSY OAK 175H

RED SIX MILE BETDOLL 424G

RED SIX MILE MISS LARK 225E

RED BAR-E-L BETDOLL 257W

| Act BW 80 | Adj WW 700 | Adj YW 1254 | Calving Ease Level 3 | | | |
|------------------|------------|-------------|-----------------------------|-----|------|-----|
| | CED | BW | WW | YW | Milk | CEM |
| Angus One EPD | 5 | 0.8 | 45 | 75 | 28 | 8 |
| Percentile Rank | 31 | | 31 | 34 | 11 | 19 |
| BOLT EPDs | 11.9 | -0.8 | 72 | 110 | 29 | 6.5 |

- soggy and stout, proven maternal cow family,
- 424G comes from the Betdoll cow family, which is one of the prominent cow families that we acquired from Bar EL. We love her added stature, flawless udder and stout features. She has a wean ratio of 106 on 2 calves.



— 60 —

Lot 60 RED SIX MILE **PARABELLUM** 121K

Reg No: 2259787 / Tattoo: SIXM 121K / DOB: February 09 2022

RED SIX MILE JOHN WICK 882E RED WEBER REFORM 618
RED SIX MILE PARABELLUM 675G **RED SIX MILE MISS LARK 20F**
 RED SIX MILE KURUBA 712A RED SIX MILE MISS LARK 380X

| Act BW 94 | Adj WW 720 | Adj YW 1227 | Calving Ease Level 1 | | | |
|------------------------|------------|-------------|-----------------------------|-----------|-------------|------------|
| | CED | BW | WW | YW | Milk | CEM |
| Angus One EPD | -3 | 4.2 | 61 | 108 | 26 | 9 |
| Percentile Rank | | | 3 | 2 | 25 | 12 |
| BOLT EPDs | 12.1 | 0.4 | 68 | 113 | 34 | 8.4 |

- sale feature, growth oriented, stout and shaggy, loose made
- 20F is another Lark female that is getting it done in production. A previous son sold through our bull sale to Hillcrest Colony. 20F is powerfully constructed with a ton of rib shape and bone. She has an average wean ratio of 112 on 2 calves.



Dam- Miss Lark 20F



Maternal Brother – Hummer 54H

The Soggy Shag Master



61

Lot 61 RED SIX MILE **MR OAK** 166K

Reg No: 2266639 / Tattoo: SIXM 166K / DOB: February 14 2022

RED SIX MILE JOHN WICK 882E

RED PIE ON THE MARK 5424

RED SIX MILE MOSSY OAK 175H

RED SIX MILE FRADO 360F

RED SIX MILE MISS LARK 225E

RED BAR-E-L FRADO 209U

| | | | | | | |
|------------------|-------------|-------------|-----------------------------|------------|-----------|-------------|
| Act BW 78 | Adj WW 673 | Adj YW 1183 | Calving Ease Level 4 | | | |
| | CED | BW | WW | YW | Milk | CEM |
| Angus One EPD | 10 | -0.9 | 43 | 88 | 28 | 12 |
| Percentile Rank | 7 | 17 | | 12 | 11 | 2 |
| BOLT EPDs | 14.6 | -2.9 | 66 | 109 | 29 | 10.1 |



Maternal Sister – Frado 344J

- the complete package, soggy made, productive and proven dam
- Another Frado female who will quickly find her way to the donor pen. Three calves so far and all absolute knock-outs. Her first son sold to Ward's Red Angus as a highlight in our 2020 bull sale. Her second calf was the show barn favourite "Baby Stark" who sold to Harvie Crest Jr Division and went on to win those kids many banners capping off her 2022 show campaign as Red Angus Champion Female in the First Lady Classic at Agribition! Average wean ratio of 103 on 3 calves.

Lot 62 RED SIX MILE **MR OAK** 42K

Reg No: 2266627 / Tattoo: SIXM 42K / DOB: January 28 2022

RED SIX MILE JOHN WICK 882E

RED TER-RON FULLY LOADED 540R

RED SIX MILE MOSSY OAK 175H

RED CC LUSTER 29A

RED SIX MILE MISS LARK 225E

RED STEWART OWYHEE 814U

| | | | | | | |
|------------------|-------------|-------------|-----------------------------|------------|-----------|------------|
| Act BW 82 | Adj WW 622 | Adj YW 1073 | Calving Ease Level 3 | | | |
| | CED | BW | WW | YW | Milk | CEM |
| Angus One EPD | 5 | 0.7 | 38 | 71 | 31 | 6 |
| Percentile Rank | 31 | | | | 3 | |
| BOLT EPDs | 11.7 | -0.8 | 64 | 104 | 25 | 7.3 |



62

- hairy, rugged, thick made
- 29A is a powerful female who we attained through the Cactus Coulee herd acquisition. She has one daughter working here for us at Six Mile. Her son sold last year to Hillcrest Colony.



63

- calm and curious demeanour, dark red female maker, bold hip and rib
- Sierra 387G could be the most phenotypically exquisite female on the ranch. She has an elite front-end, big middle, great udder and stands on absolutely phenomenal, large feet. She had the misfortune of losing her first calf on pasture, but is making up for it with this guy who she weaned off with a 105 wean ratio.



Dam - Sierra 387G

Lot 63 RED SIX MILE GSF **MR OAK** 175K

Reg No: 2279659 / Tattoo: SIXM 175K / DOB: February 14 2022

RED SIX MILE JOHN WICK 882E

RED SIX MILE ENFORCER 204E

RED SIX MILE MOSSY OAK 175H

RED SIX MILE SIERRA 387G

RED SIX MILE MISS LARK 225E

RED SIX MILE SEXY SIERRA 175B

Act BW 85 Adj WW 744 Adj YW 1179 **Calving Ease Level 1**

| | CED | BW | WW | YW | Milk | CEM |
|------------------|-------------|-------------|-----------|------------|-----------|------------|
| Angus One EPD | 2 | 3 | 47 | 81 | 28 | 2 |
| Percentile Rank | | | 24 | 22 | 11 | |
| BOLT EPDs | 12.2 | -0.6 | 75 | 119 | 31 | 7.2 |

Lot 64 RED SIX MILE **MR OAK** 67K

Reg No: 2266631 / Tattoo: SIXM 67K / DOB: February 03 2022

RED SIX MILE JOHN WICK 882E

RED SIX MILE WILD WEST 0913W

RED SIX MILE MOSSY OAK 175H

RED SIX MILE TINA 180Z

RED SIX MILE MISS LARK 225E

RED SHODEREE TINA 149N

Act BW 68 Adj WW 730 Adj YW 1151 **Calving Ease Level 4+**

| | CED | BW | WW | YW | Milk | CEM |
|------------------|-------------|-------------|-----------|------------|-----------|-------------|
| Angus One EPD | 12 | -1.7 | 41 | 62 | 24 | 14 |
| Percentile Rank | 3 | 10 | | | | 1 |
| BOLT EPDs | 15.6 | -3.4 | 68 | 103 | 32 | 10.9 |



64

- calving ease specialist, proven dam and cow family, long and smooth
- Tina 180Z does not miss! Bulls have sold through our bull sale to J6 Farms, Richard and Kathy Rieder, NACO Farms and Mike Tilleman. Daughters have sold to Pam Meyer and Sunberry Valley Farms. At 11 years of age 180Z still one of the highest quality udders on the ranch and awesome feet. Average wean index of 108 on 9 calves.



Maternal Sister- Tina 249H

Lot 65 RED SIX MILE **MR OAK** 50K

Reg No: 2279279 / Tattoo: SIXM 50K / DOB: February 02 2022

RED SIX MILE JOHN WICK 882E

RED BIEBER HARD DRIVE D133

RED SIX MILE MOSSY OAK 175H

RED SIX MILE MS TROPHY 292H

RED SIX MILE MISS LARK 225E

RED SIX MILE MS TROPHY 572A

| Act BW 88 | Adj WW 792 | Adj YW 1328 | Calving Ease Level 2 | | | |
|------------------|------------|-------------|----------------------|-----|------|-----|
| Angus One EPD | CED | BW | WW | YW | Milk | CEM |
| Percentile Rank | 1 | 2.5 | 67 | 115 | 26 | 11 |
| | | | 1 | 1 | 25 | 4 |
| BOLT EPDs | 13.9 | -0.6 | 81 | 130 | 29 | 9.2 |

- larger-framed, extra spine length, chart topping growth EPD's
- 292H is an elegant fronted, big-bodied Hard Drive daughter with ample milk production in a tight tidy udder. She weaned this calf, her first, off with a wean index of 113.



65

Lot 66 RED SIX MILE **MR OAK** 144K

Reg No: 2266588 / Tattoo: SIXM 144K / DOB: February 12 2022

RED SIX MILE JOHN WICK 882E

RED HALL'S BARRY 040C

RED SIX MILE MOSSY OAK 175H

RED SIX MILE GLORIA 113H

RED SIX MILE MISS LARK 225E

RED SIX MILE GLORIA 361T

| Act BW 88 | Adj WW 758 | Adj YW 1320 | Calving Ease Level 2 | | | |
|------------------|------------|-------------|----------------------|-----|------|-----|
| Angus One EPD | CED | BW | WW | YW | Milk | CEM |
| Percentile Rank | -3 | 2.8 | 50 | 91 | 32 | -1 |
| | | | 16 | 9 | 2 | |
| BOLT EPDs | 7.3 | 0.8 | 77 | 122 | 29 | 2.7 |

- larger framed, maternally driven, proud front end
- Gloria 113H worked hard weaning this calf off with an impressive 107 wean index. She has an elite front-end and exceptional udder that the Barry daughters are known for.



66

Lot 67 RED SIX MILE **MR OAK** 41K

Reg No: 2266628 / Tattoo: SIXM 41K / DOB: January 28 2022

RED SIX MILE JOHN WICK 882E

RED CC LAWMAN 32E

RED SIX MILE MOSSY OAK 175H

RED SIX MILE JOLENE 347H

RED SIX MILE MISS LARK 225E

RED SIX MILE JOLENE 8D

| Act BW 79 | Adj WW 751 | Adj YW 1301 | Calving Ease Level 3 | | | |
|------------------|------------|-------------|----------------------|-----|------|-----|
| Angus One EPD | CED | BW | WW | YW | Milk | CEM |
| Percentile Rank | 4 | 1.2 | 44 | 65 | 25 | 4 |
| | | | 34 | | 35 | |
| BOLT EPDs | 13.5 | -1.6 | 73 | 111 | 28 | 8.7 |

- long-bodied, mellow disposition, smooth made
- 347H is an extremely feminine, neat uddered Lawman daughter who weaned this calf off with a 108 wean index.



67



68

68

- herd bull presence, bold and dense, full of red meat
- 2D is a hard-working cow here at Six Mile. Each year she brings in quality and pounds at weaning, looks good doing it and breeds back in a timely manner. She truly is the type of female we all need around a cow that helps pay the bills not create them. Sons have previously sold to our neighbours Bob Greffard and Fitzpatrick Ranch. One daughter retained in herd. Average wean index of 100 on 5 calves.



Maternal Brother – Equity 521H

Lot 68 RED SIX MILE **WRANGLER** 117K

Reg No: 2259780 / Tattoo: SIXM 117K / DOB: February 09 2022

RED RIDGE PRAGMATIC 6098

RED CROWFOOT 4ACES 2193Z

RED RIDGE WRANGLER 9096

RED BAR-E-L BELLE 2D

RED RIDGE AQUILA 552-8066

RED BAR-E-LAB BELLE 4P

Act BW 80 Adj WW 712 Adj YW 1193 **Calving Ease Level 3**

| | CED | BW | WW | YW | Milk | CEM |
|------------------|-------------|-------------|-----------|-----------|-----------|------------|
| Angus One EPD | 2 | 1.1 | 51 | 85 | 38 | 4 |
| Percentile Rank | | | 14 | 16 | 1 | |
| BOLT EPDs | 12.1 | -1.7 | 63 | 97 | 27 | 4.6 |

Lot 69 RED SIX MILE **WRANGLER** 69K

Reg No: 2271350 / Tattoo: SIXM 69K / DOB: February 03 2022

RED RIDGE PRAGMATIC 6098

RED SIX MILE TUFF ENUF 111Z

RED RIDGE WRANGLER 9096

RED SIX MILE BARBIE DOLL 329C

RED RIDGE AQUILA 552-8066

RED SIX MILE BARBIE 296Z

Act BW 78 Adj WW 728 Adj YW 1172 **Calving Ease Level 4+**

| | CED | BW | WW | YW | Milk | CEM |
|------------------|-------------|-------------|-----------|-----------|-----------|------------|
| Angus One EPD | 5 | -0.2 | 32 | 51 | 33 | 7 |
| Percentile Rank | 31 | 26 | | | 1 | 28 |
| BOLT EPDs | 13.5 | -2.4 | 64 | 97 | 26 | 7.3 |



69

69

- heifer pen friendly, shaggy, soggy build
- 329C is heavy milking, big bodied cow with a big solid foot. Sons have sold to Cristo Farms, Morin Cattle Co and Crimson Cattle. She boasts a wean ratio of 105 on 6 calves.



Dam – Doll 329C

- heifer friendly, shaggy, dark red, feed efficient look
- 4D has been doing a very nice job in production since arriving to Six Mile from Cactus Coulee. Her daughter last year sold through Genetic Focus to Addison Purlee.



Maternal Sister- Lily 469J



Lot 70 RED SIX MILE **WRANGLER** 178K

Reg No: 2260214 / Tattoo: SIXM 178K / DOB: February 14 2022

RED RIDGE PRAGMATIC 6098

CC LICORICE 13A

RED RIDGE WRANGLER 9096

RED BROKEN TREE LILY 4D

RED RIDGE AQUILA 552-8066

RED SCOTTS SSF PRINCESS 1147Y

| Act BW 76 | Adj WW 677 | Adj YW 1169 | Calving Ease Level 4 | | | |
|------------------------|------------|-------------|-----------------------------|-----------|-------------|------------|
| | CED | BW | WW | YW | Milk | CEM |
| Angus One EPD | 6 | -0.8 | 47 | 72 | 29 | 6 |
| Percentile Rank | 24 | 18 | 24 | | 7 | |
| BOLT EPDs | 15.3 | -3.1 | 56 | 93 | 26 | 9.7 |

Lot 71 RED SIX MILE **WRANGLER** 267K

Reg No: 2274800 / Tattoo: SIXM 267K / DOB: February 20 2022

RED RIDGE PRAGMATIC 6098

RED 3SCC NORTHBOUND F344

RED RIDGE WRANGLER 9096

RED SIX MILE ENID 447H

RED RIDGE AQUILA 552-8066

RED SIX MILE ENID 457C

| Act BW 82 | Adj WW 788 | Adj YW 1220 | Calving Ease Level 2 | | | |
|------------------------|------------|-------------|-----------------------------|-----------|-------------|------------|
| | CED | BW | WW | YW | Milk | CEM |
| Angus One EPD | 1 | 2.6 | 56 | 88 | 30 | -1 |
| Percentile Rank | | | 6 | 12 | 4 | |
| BOLT EPDs | 12.6 | -0.9 | 72 | 119 | 30 | 7.1 |

- masculine head and crest, bold rib shape,
- A moderate framed, heavy milking, sound uddered Northbound daughter, Enid 447H weaned this calf off with a 113 wean ratio, an excellent showing for her first crack at motherhood.



Sire of Lots 68 to 75 - Wrangler 9096





Lot 72 RED SIX MILE **WRANGLER** 409K

Reg No: 2267589 / Tattoo: SIXM 409K / DOB: March 14 2022

RED RIDGE PRAGMATIC 6098 RED HRR EQUITY F039
RED RIDGE WRANGLER 9096 **RED SIX MILE LADY HAWK 298H**
 RED RIDGE AQUILA 552-8066 RED SIX MILE LADY HAWK 174D

| Act BW 76 | Adj WW 727 | Adj YW 1253 | Calving Ease Level 3 | | | |
|------------------|------------|-------------|-----------------------------|-----|------|-----|
| | CED | BW | WW | YW | Milk | CEM |
| Angus One EPD | 6 | 1.9 | 57 | 92 | 31 | 9 |
| Percentile Rank | 24 | | 5 | 8 | 3 | 12 |
| BOLT EPDs | 12.8 | -1.5 | 68 | 111 | 28 | 7.8 |

- robust rib and hip, heifer bull, complete phenotype
- 298H is a tidy uddered Equity daughter with a big time future who raised this calf of with a 112 wean ratio.

Lot 74 RED SIX MILE **WRANGLER** 152K

Reg No: 2271357 / Tattoo: SIXM 152K / DOB: 12-Feb-22

RED RIDGE PRAGMATIC 6098 RED SIX MILE CUSTOM MADE 505C
RED RIDGE WRANGLER 9096 **RED SIX MILE SYRINGA 335F**
 RED RIDGE AQUILA 552-8066 RED SIX MILE SEXY SYRINGA 151B

| Act BW 80 | Adj WW 639 | Adj YW 1072 | Calving Ease Level 3 | | | |
|------------------|------------|-------------|-----------------------------|----|------|-----|
| | CED | BW | WW | YW | Milk | CEM |
| Angus One EPD | 3 | 0.4 | 41 | 67 | 26 | 1 |
| Percentile Rank | | 35 | | | 30 | |
| BOLT EPDs | | | | | | |

- heifer pen candidate, dark red, sensible and functional frame
- 335F is a female who exhibits a nice udder design with ample rib shape. A son is working for our good friend Trae Eklund of Horse Creek Ranch



Lot 73 RED SIX MILE HLB **WRANGLER** 302K

Reg No: 2267192 / Tattoo: SIXM 302K / DOB: February 24 2022

RED RIDGE PRAGMATIC 6098 RED CRUMP POWDER RIVER 7787
RED RIDGE WRANGLER 9096 **RED SIX MILE SHAWNEE 244H**
 RED RIDGE AQUILA 552-8066 RED SIX MILE SHAWNEE 296F

| Act BW 82 | Adj WW 805 | Adj YW 1183 | Calving Ease Level 3 to 4 | | | |
|------------------|------------|-------------|----------------------------------|-----|------|-----|
| | CED | BW | WW | YW | Milk | CEM |
| Angus One EPD | -1 | 2.2 | 59 | 89 | 20 | 4 |
| Percentile Rank | | | 4 | 11 | | |
| BOLT EPDs | 11.7 | -0.6 | 79 | 125 | 33 | 7 |

- exceptional feet, long-bodied, smooth build
- 244H comes from the super productive Shawnee cow family. She exhibits an exceptional udder with great teat placement and size. 244H is easy to find on pasture tours with her attractive and proud profile. She raised this calf off with an incredible wean ratio of 124.

Lot 75 RED SIX MILE **WRANGLER** 392K

Reg No: 2267576 / Tattoo: SIXM 392K / DOB: March 09 2022

RED RIDGE PRAGMATIC 6098 RED RAINBOW ROLEX 15F
RED RIDGE WRANGLER 9096 **RED SIX MILE ELORA 542H**
 RED RIDGE AQUILA 552-8066 RED BLAIRS ELORA 40X

| Act BW 78 | Adj WW 653 | Adj YW 1190 | Calving Ease Level 4 | | | |
|------------------|------------|-------------|-----------------------------|----|------|-----|
| | CED | BW | WW | YW | Milk | CEM |
| Angus One EPD | 3 | -0.1 | 39 | 77 | 31 | 5 |
| Percentile Rank | | 27 | | 30 | 3 | |
| BOLT EPDs | 13 | -2 | 63 | 98 | 24 | 6.7 |

- heifer friendly, dark solid foot, soft dark shag
- 542H comes from the Elora cow family who produced our herdbull "Barry". She is a moderate framed, dark-red female with great feet.

"I just want to say that Lot 76, Wrangler x MS Extra, has the most beautiful udder. I wish I could copy and paste 100 more just like that." *Chelsea Gill – Reverse GC Angus*



— 76 —

Lot 76 RED SIX MILE **MR KNIGHT** 321K

Reg No: 2287511 / Tattoo: SIXM 321K / DOB: February 28 2022

RED RRA THE NIGHT
RED ROUND-EM-UP THE NIGHT P012 RED SIX MILE DURUBA 589F
 RED ROUND-EM-UP VERA K013 RED SIX MILE DURUBA 725D

| | | | | | | |
|------------------|------------|-------------|----------------------------------|----|------|-----|
| Act BW 90 | Adj WW 743 | Adj YW 1372 | Calving Ease Level 2 to 3 | | | |
| Angus One EPD | CED | BW | WW | YW | Milk | CEM |
| Percentile Rank | 6 | 0.6 | 43 | 74 | 28 | 8 |
| | 24 | | | | 11 | 19 |
| BOLT EPDs | 11.2 | 0.3 | 63 | 93 | 31 | 6.3 |

- Australian influenced pedigree, performance front runner, easy fleshing
- Duruba 589F has a very impressive production record so far, with 3 calves and a wean ratio of 113. She has a neat, tight and tidy udder. Her high quality John Wick daughter was selected by the Christman girls and was shown very successfully.



Alternate View of Lot 76

Lot 77 RED SIX MILE **GENTRY** 108K

Reg No: 2272061 / Tattoo: SIXM 108K / DOB: February 08 2022

RED NCJ COMING IN HOT 24E
RED SIX MILE GENTRY 342G RED SIX MILE GAME FACE 164Y
 RED SIX MILE & CO LASSIE 417X RED SIX MILE MS LARK 187H
 RED SVR MISS LARK 100P

| | | | | | | |
|------------------|------------|-------------|----------------------------------|----|------|-----|
| Act BW 82 | Adj WW 678 | Adj YW 1242 | Calving Ease Level 3 to 4 | | | |
| Angus One EPD | CED | BW | WW | YW | Milk | CEM |
| Percentile Rank | 3 | 1.4 | 42 | 71 | 24 | 5 |
| | | | | | | |
| BOLT EPDs | | | | | | |

- heifer pen friendly, smooth build, highly maternal pedigree
- 187H is another Lark female. These Lark's know how to raise exceptional progeny. 187H had the misfortune of getting very sick while raising this calf on pasture, but still weaned him off with a 95 wean index and bred back.
- the Gentry daughters hitting production are the best and most consistent uddered sire group that we have ever calved out



Maternal Sister - Duruba 18H



Where Customers,





Become Friends.





78

- added growth and stature, solid foot, proud, high-quality build
- 5F is an attractive female who came in the acquisition of Cactus Coulee cows. A daughter sold to Aubree Bauer through last years' bull sale. This female raised twins last year and did a tremendous job on both, weaning over 1200 lbs at weaning time.



Alternate View of Lot 79

Lot 78 RED SIX MILE **NORTHBOUND** 115K

Twin Reg No: 2267604 / Tattoo: SIXM 115K / DOB: February 09 2022

RED VGW NAVIGATOR 010

RED DKF RAZOR 55C

RED 3SCC NORTHBOUND F344

RED CC SERENA 05F

RED 3SCC POLLY B431

RED CC SERENA 29D

Act BW 66 Adj WW 689 Adj YW 1212 **Calving Ease Level 2**

| | CED | BW | WW | YW | Milk | CEM |
|------------------|-------------|-------------|-----------|------------|-----------|------------|
| Angus One EPD | 1.5 | 2.3 | 49 | 92 | 29 | 6.5 |
| Percentile Rank | | | 21 | 8 | 11 | |
| BOLT EPDs | 11.5 | -0.4 | 68 | 115 | 30 | 6.2 |

Lot 79 RED SIX MILE **NORTHBOUND** 433K

Reg No: 2267633 / Tattoo: SIXM 433K / DOB: March 17 2022

RED VGW NAVIGATOR 010

RED CROWFOOT 4ACES 2193Z

RED 3SCC NORTHBOUND F344

RED BAR-E-L BETDOLL 141B

RED 3SCC POLLY B431

RED BAR-E-L BETDOLL 257W

Act BW 86 Adj WW 701 Adj YW 1210 **Calving Ease Level 2**

| | CED | BW | WW | YW | Milk | CEM |
|------------------|-------------|----------|-----------|------------|-----------|----------|
| Angus One EPD | 1 | 3.2 | 49 | 80 | 36 | 7 |
| Percentile Rank | | | 18 | 24 | 1 | 28 |
| BOLT EPDs | 11.9 | 0 | 64 | 102 | 33 | 6 |



79

- early pen favorite, big hipped and stout pinned, intriguing & captivating look
- Betdoll 141B is one of the most phenotypically beautiful cows on the place. She has done an exceptional job in production here at Six Mile. She has one daughter working for Running JR Red Angus and another female owned by Heather LeBlanc. Average wean ratio of 103 on 9 calves.



Dam - Betdoll 141B



80

Lot 80 RED SIX MILE **NORTHBOUND** 367K

Reg No: 2267564 / Tattoo: SIXM 367K / DOB: March 06 2022

RED VGW NAVIGATOR 010

RED HALL'S BARRY 040C

RED 3SCC NORTHBOUND F344

RED SIX MILE CHETA 406F

RED 3SCC POLLY B431

RED SIX MILE CHETA 381Z

| Act BW 85 | Adj WW 710 | Adj YW 1196 | Calving Ease Level 2 to 3 | | | |
|-----------------|------------|-------------|---------------------------|----|------|-----|
| | CED | BW | WW | YW | Milk | CEM |
| Angus One EPD | 3 | 2.6 | 50 | 73 | 33 | 8 |
| Percentile Rank | | 16 | | | 1 | 19 |
| BOLT EPDs | 12.4 | -1.3 | 61 | 99 | 34 | 5.7 |

- sensible frame size, bold and rugged, easy keeping look, friendly disposition
- Cheta 406F is a moderate framed, dark-red, productive female. A daughter was selected through Genetic Focus 2021 by Dersta Farms, another daughter is retained in herd. Wean index of 98 on 3 calves.



Maternal Sister to Lot 80
Cheta 19H



Dam of Lot 81- Sarabell 313Y

Lot 81 RED SIX MILE **NORTHBOUND** 331K

Reg No: 2267232 / Tattoo: SIXM 331K / DOB: February 28 2022

RED VGW NAVIGATOR 010

RED SIX MILE TRUMP TOWER 233T

RED 3SCC NORTHBOUND F344

RED SIX MILE SARABELL 313Y

RED 3SCC POLLY B431

RED SIX MILE SARABELL 449U

| Act BW 84 | Adj WW 722 | Adj YW 1135 | Calving Ease Level 3 | | | |
|-----------------|------------|-------------|----------------------|-----|------|-----|
| | CED | BW | WW | YW | Milk | CEM |
| Angus One EPD | 5 | 1.5 | 52 | 91 | 29 | 7 |
| Percentile Rank | 31 | | 12 | 9 | 7 | 28 |
| BOLT EPDs | 12.9 | -0.6 | 63 | 102 | 34 | 7.3 |

- awesome footed, female making pedigree, herdsire character
- Donor Dam 313Y is a CAA Elite Dam since 2020, she was designated this with 8 calves who have an average wean ratio of 105. Sons have sold to Crimson Cattle, Running JR Ranch, Kevin Nelson, Ken Solberg and Bar V Ranch. She also has multiple daughters in production here at Six Mile.

Lot 82 RED SIX MILE **NORTHBOUND** 466K

Reg No: 2267760 / Tattoo: SIXM 466K / DOB: March 21 2022

RED VGW NAVIGATOR 010

RED DOUBLE C EXCEL 407E

RED 3SCC NORTHBOUND F344

RED CL STEEN DYNAMINT 95G

RED 3SCC POLLY B431

RED MOOSE CREEK DYNAMINT 95D

| Act BW 88 | Adj WW 748 | Adj YW 1198 | Calving Ease Level 1 to 2 | | | |
|-----------------|------------|-------------|---------------------------|-----|------|-----|
| | CED | BW | WW | YW | Milk | CEM |
| Angus One EPD | 2 | 2.2 | 55 | 98 | 31 | 6 |
| Percentile Rank | | | 7 | 4 | 3 | |
| BOLT EPDs | 11.2 | 0.4 | 71 | 117 | 32 | 6.9 |

- long spined, dark red, top 10% WW & YW
- 95G came to us from the great young cattleman, Lane Steen. She is feminine-fronted, long-spined and attractive. She weaned this calf off with a 113 wean ratio.



83



Paternal Grandsire- WB Pendleton 708

Lot 83 RED SIX MILE **PENDLETON** 404K

Reg No: 2274849 / Tattoo: SIXM 404K / DOB: March 13 2022

WB PENDLETON 708 PVF-SWSN
SIX MILE PENDLETON 631H
RED BAR-E-L BESSIE 259T

RED PIE ON THE MARK 5424
SIX MILE JUNE 675F
SIX MILE JUNE 238D

| | Act BW 84 | Adj WW 701 | Adj YW 1214 | Calving Ease Level 2 to 3 | | |
|------------------------|-----------|------------|-------------|----------------------------------|-----------|-----------|
| | | | | CED | BW | WW |
| Angus One EPD | | | | 4 | 1.9 | 44 |
| Percentile Rank | | | | | | 34 |
| | | | | | | 22 |
| BOLT EPDs | 10.8 | -1.1 | 67 | 108 | 21 | 5.7 |

- intriguing outcross pedigree, proud & carries himself with authority , dark dark dark
- 404K offers new and exciting genetics to the red gene pool as the first red hided derivative from WB Pendleton 708 who was a past Denver and Fort Worth Champion. We admired his unrivaled foot quality and combination of muscle mass and skeletal correctness. We flushed one of our top Bar E L donors, 259T and utilized the most impressive son.
- June 675F is a black-red carrier female who has a refined, feminine front end with great udder attachment and teat size. She has two sons selling in this sale, with the other being Lot 105. Her mother has a bull selling in this sale, as well as her grandmother having a bull in the sale. These June females know how to work! Wean ratio of 100 on 3 calves.
- **Terms to be announced**

Lot 84 RED SIX MILE **STEALTH** 289K

Reg No: 2272065 / Tattoo: SIXM 289K / DOB: February 22 2022

PEAK DOT UNANIMOUS 586B
RED SIX MILE STEALTH 269F
RED SIX MILE MISS LARK 855A

RED VGW GAME PLAN 816
RED SIX MILE SARABELL 526A
RED SIX MILE SARABELL 449U

| | Act BW 94 | Adj WW 620 | Adj YW 1064 | Calving Ease Level 1 | | |
|------------------------|-----------|------------|-------------|-----------------------------|-----------|-----------|
| | | | | CED | BW | WW |
| Angus One EPD | | | | -1 | 2.7 | 41 |
| Percentile Rank | | | | | | 69 |
| | | | | | | 23 |
| BOLT EPDs | | | | | | 2 |

- solid foot, broad skull with a wide muzzle
- 526A is a bigbodied Game Plan daughter with sons working for Bounty B Ranch, Brian Barker and Gavelin Farms. She has a wean ratio of 101 on 8 calves.

Lot 85 RED SIX MILE **STEALTH** 506K

Reg No: 2274809 / Tattoo: SIXM 506K / DOB: March 28 2022

RED SIX MILE STEALTH 269F
RED RUNNING JR STEALTH 37H
RED RUNNING JR RAWHIDE 25C

RED SCNJ MASTER 14U
RED CC TRENDY 2D
RED CC TRENDY 9B

| | Act BW 94 | Adj WW 723 | Adj YW 1182 | Calving Ease Level 1 | | |
|------------------------|-----------|------------|-------------|-----------------------------|-----------|-----------|
| | | | | CED | BW | WW |
| Angus One EPD | | | | 2 | 2 | 51 |
| Percentile Rank | | | | | | 14 |
| | | | | | | 34 |
| BOLT EPDs | 9.6 | 0.9 | 65 | 90 | 25 | 6.4 |

- bold forerib and body shape, square toes, high performing young herdsire prospect

Lot 86 RED SIX MILE **STEALTH** 150K

Reg No: 2259954 / Tattoo: SIXM 150K / DOB: February 12 2022

PEAK DOT UNANIMOUS 586B

RED WEBER REFORM 618

RED SIX MILE STEALTH 269F

RED SIX MILE ENID 118F

RED SIX MILE MISS LARK 855A

RED SIX MILE ENID 878W

| Act BW 80 | Adj WW 695 | Adj YW 1136 | Calving Ease Level 3 | | | |
|------------------|------------|-------------|-----------------------------|----|------|-----|
| Angus One EPD | CED | BW | WW | YW | Milk | CEM |
| Percentile Rank | -6 | 3.5 | 44 | 74 | 28 | 1 |
| | | | 34 | | 11 | |
| BOLT EPDs | 12.2 | -1.2 | 58 | 89 | 24 | 7.2 |

- blood red hide, sound and athletic, big square hip
- 118F is a dark red, hairy female who has a neat, tidy udder design. One daughter sold to William Shankles and a son is working at Breed Creek Ranch. Wean ratio of 99 on 3.



86

Lot 87 RED SIX MILE **STEALTH** 134K

Reg No: 2259929 / Tattoo: SIXM 134K / DOB: February 11 2022

PEAK DOT UNANIMOUS 586B

RED U-2 RECKONING 149A

RED SIX MILE STEALTH 269F

RED SIX MILE MS SHEBA 325F

RED SIX MILE MISS LARK 855A

RED BAR-E-L QUEEN OF SHEBA 129

| Act BW 89 | Adj WW 723 | Adj YW 1217 | Calving Ease Level 2 | | | |
|------------------|------------|-------------|-----------------------------|----|------|-----|
| Angus One EPD | CED | BW | WW | YW | Milk | CEM |
| Percentile Rank | -4 | 2.3 | 49 | 77 | 21 | 2 |
| | | | 18 | 30 | | |
| BOLT EPDs | 8.5 | 1.2 | 63 | 96 | 24 | 6.6 |

- long and smooth made, athletic movement, bullet proof pedigree
- 325F is a refined, elegant, sound footed Reckoning daughter that produced a son selected by long-time customers Ken and Cindy Solberg. Her wean ratio on 3 calves is 101.



87

Lot 88 RED SIX MILE **STEALTH** 388K

Reg No: 2274802 / Tattoo: SIXM 388K / DOB: March 08 2022

RED SIX MILE STEALTH 269F

RED U-2 RECKONING 149A

RED RUNNING JR STEALTH 37H

RED SIX MILE QUEEN 316E

RED RUNNING JR RAWHIDE 25C

RED SIX MILE QUEEN 236Y

| Act BW 86 | Adj WW 661 | Adj YW 1132 | Calving Ease Level 2 to 3 | | | |
|------------------|------------|-------------|----------------------------------|----|------|-----|
| Angus One EPD | CED | BW | WW | YW | Milk | CEM |
| Percentile Rank | 4 | 0.5 | 41 | 60 | 22 | 7 |
| | | | | | | 28 |
| BOLT EPDs | 9.8 | 0.1 | 61 | 89 | 26 | 5.4 |

- sound and flexible, proud, dark red and hairy, easy going attitude
- 316E has a son working for Jeff & Bonnie Resch as well as a daughter retained in herd. Average wean ratio of 96 on 4 calves.



88



89

Lot 89 RED SIX MILE **HOT WIRE** 256K

Reg No: 2264096 / Tattoo: SIXM 256K / DOB: February 20 2022

RED LWNBRG ELECTRIC 4D

PEAK DOT UNANIMOUS 586B

RED LWNBRG HOT WIRE 34H

RED SIX MILE RUBY 380F

RED LWNBRG FLEX 85C

RED SVR RUBY 16P

Act BW 89 Adj WW 774 Adj YW 1257 **Calving Ease Level 1**

| | CED | BW | WW | YW | Milk | CEM |
|------------------|-----------|-------------|-----------|------------|-----------|------------|
| Angus One EPD | -2 | 2.7 | 52 | 87 | 22 | 5 |
| Percentile Rank | | | 12 | 13 | | |
| BOLT EPDs | 11 | -0.3 | 63 | 101 | 22 | 6.5 |

- soggy build, extreme amounts of shag, easy keeping kind
- Ruby 380F is a gorgeous uddered, darkred, hairy Unanimous daughter. The Ruby cow family are synonymous with quality and longevity. Two daughters have previously sold to Jack Jagers and Nu-Horizon. She has an average wean ratio of 103 on 3 calves.



Maternal Sister to Lot 89
Ruby 450J



Sire of Lots 89 to 91- Hot Wire 34H

Lot 90 RED SIX MILE **HOT WIRE** 94K

Reg No: 2259754 / Tattoo: SIXM 94K / DOB: February 06 2022

RED LWNBRG ELECTRIC 4D

PEAK DOT UNANIMOUS 586B

RED LWNBRG HOT WIRE 34H

SIX MILE BAYBERRY 397G

RED LWNBRG FLEX 85C

SIX MILE BAYBERRY 15Z

Act BW 78 Adj WW 677 Adj YW 1260 **Calving Ease Level 2**

| | CED | BW | WW | YW | Milk | CEM |
|------------------|-------------|-------------|-----------|-----------|-----------|------------|
| Angus One EPD | -3 | 1.7 | 58 | 95 | 23 | 5 |
| Percentile Rank | | | 4 | 6 | | |
| BOLT EPDs | 11.8 | -1.8 | 60 | 96 | 23 | 6.9 |

- long spined, added shag, unique pedigree
- 397G is a Black-Red Carrier daughter of the prolific producing Bayberry 15Z (dam of Lot 144). She exhibits a gorgeous udder we have come to expect from Unanimous daughters. 397G has a wean ratio of 103 on 2 calves.

Lot 91 RED SIX MILE **HOT WIRE** 419K

Reg No: 2272064 / Tattoo: SIXM 419K / DOB: March 15 2022

RED LWNBRG ELECTRIC 4D

RED CRUMP POWDER RIVER 7787

RED LWNBRG HOT WIRE 34H

RED SIX MILE MS TROPHY 225G

RED LWNBRG FLEX 85C

RED SIX MILE MISS TROPHY 934E

Act BW 80 Adj WW 664 Adj YW 1266 **Calving Ease Level 3**

| | CED | BW | WW | YW | Milk | CEM |
|-----------------|-----|-----|----|----|------|-----|
| Angus One EPD | 1 | 0.7 | 51 | 89 | 26 | 1 |
| Percentile Rank | | | 14 | 11 | 25 | |

- smooth shoulder and body, long stride
- 225G is a larger framed, sound structured Powder River daughter. She has an average wean ratio of 110.



92

Lot 92 RED SIX MILE **TOWNSHIP** 322K

Reg No: 2267218 / Tattoo: SIXM 322K / DOB: February 28 2022

RED MRLA RESOURCE 137E

RED U-2 RECKONING 149A

RED U2 TOWNSHIP 17G

RED SIX MILE MS MINERVA 650G

RED U-2 BEAUTY 113Z

RED SIX MILE MINERVA 584B

Act BW 80 Adj WW 705 Adj YW 1156 **Calving Ease Level 2 to 3**

| | CED | BW | WW | YW | Milk | CEM |
|------------------|------|------|----|-----|------|-----|
| Angus One EPD | -0.5 | 2.8 | 39 | 67 | 28 | 5.5 |
| Percentile Rank | | | | | 11 | |
| BOLT EPDs | 12.8 | -1.4 | 62 | 100 | 35 | 7.4 |

- captivating pen favourite, balanced on the profile, wide based and big topped
- Minerva is a long-spined, sound Reckoning daughter. She is a maternal sister to our herdsire Fifth Sense. 650G has a wean ratio of 106 on 2 calves.

Lot 94 RED SIX MILE **TOWNSHIP** 196K

Reg No: 2266573 / Tattoo: SIXM 196K / DOB: February 16 2022

RED MRLA RESOURCE 137E

RED SIX MILE VARSITY BLUES 14Z

RED U2 TOWNSHIP 17G

RED SIX MILE MS TAFFETA 142B

RED U-2 BEAUTY 113Z

RED YYTAFFETA 306N

Act BW 78 (ET) Adj WW 626 Adj YW 1018 **Calving Ease Level 3**

| | CED | BW | WW | YW | Milk | CEM |
|------------------|-----|------|----|----|------|-----|
| Angus One EPD | 5 | 1 | 37 | 57 | 22 | 5 |
| Percentile Rank | 31 | | | | | |
| BOLT EPDs | 12 | -1.4 | 54 | 82 | 30 | 6.6 |

- moderate framed heifer pen option, dense muscled, shapely
- Taffeta 142B wears the crown as the high earning cow on the ranch. She injects calving ease and superior foot quality to her offspring while maintaining real world efficiency and high maternal characteristics.



Maternal Granddam of Lot 92 – Minerva 584B



Sire of Lots 92 to 95 – Township 17G



Dam of Lots 94 & 95 – Taffeta 142B



93

Lot 93 RED SIX MILE **TOWNSHIP** 271K

Reg No: 2266704 / Tattoo: SIXM 271K / DOB: February 21 2022

RED MRLA RESOURCE 137E

RED U-2 RECKONING 149A

RED U2 TOWNSHIP 17G

RED SIX MILE BAYBERRY 271G

RED U-2 BEAUTY 113Z

RED SIX MILE BAYBERRY 932E

Act BW 94 Adj WW 671 Adj YW 1174 **Calving Ease Level 1**

| | CED | BW | WW | YW | Milk | CEM |
|------------------|-----|-----|----|-----|------|-----|
| Angus One EPD | -3 | 4 | 46 | 88 | 23 | 3 |
| Percentile Rank | | | | | 12 | |
| BOLT EPDs | 6 | 2.4 | 62 | 102 | 26 | 4 |

- early scrotal development, excellent hair coat, strong maternal pedigree
- 271G is a solid footed, moderate framed Reckoning daughter with a typical neat and tidy udder. She has a wean ratio of 100 on 2 calves.

Lot 95 RED SIX MILE **TOWNSHIP** 250K

Reg No: 2279277 / Tattoo: SIXM 250K / DOB: February 20 2022

RED MRLA RESOURCE 137E

RED SIX MILE VARSITY BLUES 14Z

RED U2 TOWNSHIP 17G

RED SIX MILE MS TAFFETA 142B

RED U-2 BEAUTY 113Z

RED YYTAFFETA 306N

Act BW 88 (ET) Adj WW 546 Adj YW 1096 **Calving Ease Level 3**

| | CED | BW | WW | YW | Milk | CEM |
|------------------|-----|------|----|----|------|-----|
| Angus One EPD | 5 | 0.7 | 38 | 61 | 31 | 6 |
| Percentile Rank | 31 | | | | 3 | |
| BOLT EPDs | 12 | -1.4 | 54 | 82 | 30 | 6.6 |

- stout backed, square at the corners, sensible framed female maker
- Taffeta 142B is stunning. Big middled, square toes and a perfect udder construction. She has had a very positive impact on our program and the Red Angus breed. Daughters have been selected by Ranch Covey, Berwald Red Angus and 4 daughters retained in the Six Mile herd.



Lot 96 RED SIX MILE **APPROVAL** 216K

Reg No: 2275448 / Tattoo: SIXM 216K / DOB: February 18 2022

RED TER-RON CARLTON 810H
RED BAR-E-L APPROVAL 4L
 RED BAR-E-L CLASS 10J

RED PIE ON THE MARK 5424
RED SIX MILE MS LASS 49F
 RED SIX MILE MS LASS 663A

Act BW 80 (ET) Adj WW 684 Adj YW 1150 **Calving Ease Level 4**

| | CED | BW | WW | YW | Milk | CEM |
|------------------|------------|------------|-----------|------------|-----------|------------|
| Angus One EPD | 4 | -0.4 | 33 | 58 | 33 | 11 |
| Percentile Rank | | 23 | | | 1 | 4 |
| BOLT EPDs | 7.9 | 0.1 | 64 | 100 | 26 | 6.9 |

- heifer friendly, smooth shouldered, intriguing pedigree
- Ms. Lass 49F is a female who recently entered our donor program as a low birth option with an incredible udder and impressive track record. Natural calves have sold to Kevin Nelson and Horse Creek Ranch. She has a wean ratio of 105 on 3 natural calves. Look for her other two sons as lots 23 and 58.



Dam of Lot 96 – Ms Lass 49F



Sire of Lots 97 & 98- Hudson 156H

Lot 97 RED 6M BURNHAM RIDGE **HUDSON**

Reg No: 2248029 / Tattoo: WFX 2K / DOB: February 24 2022

RED HRR EQUITY F039
RED SIX MILE HUDSON 156H
 RED SIX MILE BERRY 373X

RED SIX MILE JOHN WICK 882E
RED SIX MILE MARTA 315G
 RED SIX MILE MARTA 180E

Act BW 74 Adj WW 686 Adj YW **Calving Ease Level 3 to 4**

| | CED | BW | WW | YW | Milk | CEM |
|------------------|-------------|-------------|-----------|-----------|-----------|------------|
| Angus One EPD | 4.5 | 1.7 | 58 | 98 | 27 | 7 |
| Percentile Rank | | | 5 | 5 | 24 | 28 |
| BOLT EPDs | 14.2 | -2.2 | 57 | 91 | 28 | 7.5 |

- super long spined, sleep easy heifer bull, maternally oriented
- 315G was a past Genetic Focus feature selling to Walsh Farms. She hit production with a flawless udder and ample milk production. Her length of spine and youthful build is transmitted to her two sons in this sale.
- Hudson was selected by Walsh Farms in 2020. He was a crowd favourite with his real world performance as he lapped his contemporaries with 128 and 116 indexes at weaning and yearling respectively. He injects added spine length, an awesome disposition and a cowman's skull to his calves.



Lot 98 RED SIX MILE **HUDSON** 206K

Reg No: 2260227 / Tattoo: SIXM 206K / DOB: February 17 2022

RED HRR EQUITY F039
RED SIX MILE HUDSON 156H
 RED SIX MILE BERRY 373X

RED HALL'S BARRY 040C
RED SIX MILE SUGARLAND 514E
 RED BRYLOR G F SUGRLAND 176S

Act BW 96 Adj WW 683 Adj YW 1183 **Calving Ease Level 1**

| | CED | BW | WW | YW | Milk | CEM |
|------------------|------------|----------|-----------|-----------|-----------|------------|
| Angus One EPD | -2 | 3.6 | 53 | 90 | 25 | 2 |
| Percentile Rank | | | 10 | 10 | 35 | |
| BOLT EPDs | 8.6 | 1 | 56 | 84 | 28 | 3.3 |

- exceptional testicle development, big hipped, power cow bull
- Sugarland 514E is a dark red, hairy, big-bodied, stout featured female. Her first daughter sold through GF sale to Mulberry Cattle Co. One son was used on our own herd and her son last year sold to Kelly Vandorn. Wean index average of 105 on 4 calves.

99

- One of the most interesting stories you will read this bull sale season! The dam of Lot 99, 527D, went missing a few years ago when we were bringing cows home from our south pastures in the fall of 2020 and was assumed dead. Fast-forward to spring of 2021, Ty was dropping pairs off at one of our breeding pastures down south and out of the bush a comes a red cow calf pair! It was 527D with this calf travelling behind! She survived an entire winter alone in the bush, calved, managed to keep the calf alive and breed back that summer. Hardy ranch cows I tell ya! Lot 99 is no slouch; he is very high quality in our opinion. Full Disclosure we guessed the birthdate of this calf from her preg check data the previous summer (and the fact that he still had all his ears!)



Sire - Wrangler 9096



99

Lot 99 RED SIX MILE WRANGLER 816J

Reg No: 2255051 / Tattoo: SIXM 816J / DOB: April 01 2021

RED RIDGE PRAGMATIC 6098

RED RIDGE WRANGLER 9096

RED RIDGE AQUILA 552-8066

RED L83 SUPER DUTY 244Z

RED SIX MILE CHETA 527D

RED SIX MILE & CO CHETA 732A

Lot 100 RED SIX MILE OZZY 913J

Reg No: 2229961 / Tattoo: SIXM 913J / DOB: May 02 2021

RED OHRR 87R DAKOTA VIC 74B

RED SIX MILE EDDIE 500E

RED SIX MILE MS TAFFETA 142B

RED SIX MILE GAME FACE 164Y

RED CC BLACKBIRD 21E

RED LAURON BLACKBIRD 78Y

| Act BW N/A | Adj WW 706 | Calving Ease Level | | | | | |
|-----------------|------------|--------------------|-----|-----|----|------|-----|
| | | CED | BW | WW | YW | Milk | CEM |
| Angus One EPD | | 3 | 0.8 | 52 | 91 | 30 | 4 |
| Percentile Rank | | | | 12 | 9 | 4 | |
| BOLT EPDs | 11.4 | -0.7 | 71 | 119 | 29 | 7.8 | |

| Act BW 84 | Adj WW 754 | Calving Ease Level 4 | | | | | |
|-----------------|------------|----------------------|------|----|----|------|-----|
| | | CED | BW | WW | YW | Milk | CEM |
| Angus One EPD | | 10 | -0.8 | 41 | 61 | 27 | 11 |
| Percentile Rank | | 7 | 18 | | | 16 | 4 |
| BOLT EPDs | 14.7 | -2.3 | 57 | 84 | 25 | 8.2 | |

100

- favorite all along, stout and proud, easy keeping body design
- 21E is one of the high phenotype cows that came to Six Mile through the Cactus Coulee herd acquisition. We love her body shape, solid foot and impeccable udder. She quickly moved up in calving interval and her 2022 son sells as Lot 49.



Maternal Grandsire- Game Face 164Y



100



101

Lot 101 RED SIX MILE **ROLEX** 934J

Reg No: 2221619 / Tattoo: SIXM 934J / DOB: May 09 2021

RED COCKBURN ASSASSIN 624D
RED RAINBOW ROLEX 15F
 RED RAINBOW DOLL 8D

RED NCJ COMING IN HOT 24E
RED SIX MILE DEBBIE 333G
 RED SIX MILE DEBBIE DEE 377C

Act BW 84 Adj WW 788 **Calving Ease Level 2**

| | CED | BW | WW | YW | Milk | CEM |
|-----------------|-----|-----|----|-----|------|-----|
| Angus One EPD | -1 | 2.5 | 53 | 93 | 25 | 4 |
| Percentile Rank | | | 10 | 7 | 35 | |
| BOLT EPDs | 9.4 | 0.4 | 69 | 110 | 28 | 5.4 |

- super complete, wide based, square on the corners
- 333G is the natural calf off donor Debbie 377C who highlighted Genetic Focus 2021. 333G is one of the larger framed Comin in Hot daughters in our herd and maintains awesome body condition throughout the year. She is already following in her mothers' footsteps as a powerful producer with an average wean ratio of 104 on 2 calves.



102

Lot 102 RED SIX MILE **ROLEX** 880J

Reg No: 2255025 / Tattoo: SIXM 880J / DOB: April 15 2021

RED COCKBURN ASSASSIN 624D
RED RAINBOW ROLEX 15F
 RED RAINBOW DOLL 8D

RED NCJ COMING IN HOT 24E
RED SIX MILE MISS ENID 516G
 RED SIX MILE ENID 306E

Act BW 78 Adj WW 683 **Calving Ease Level 3**

| | CED | BW | WW | YW | Milk | CEM |
|-----------------|-----|-----|----|----|------|-----|
| Angus One EPD | -1 | 1.7 | 45 | 75 | 24 | 4 |
| Percentile Rank | | | 31 | 34 | | |

- the darkest shade of red, moderate build, densely muscled,
- 516G is a super easy fleshing Comin In Hot daughter. She has a nice udder and great dark red color. Average wean index of 103 on 2 calves.



103

Lot 103 RED SIX MILE **ROLEX** 862J

Reg No: 2229863 / Tattoo: SIXM 862J / DOB: April 09 2021

RED COCKBURN ASSASSIN 624D
RED RAINBOW ROLEX 15F
 RED RAINBOW DOLL 8D

RED BIEBER HARD DRIVE D133
RED SIX MILE MEG 661F
 RED BAR-E-L MEG 182D

Act BW 72 Adj WW 686 **Calving Ease Level 4+**

| | CED | BW | WW | YW | Milk | CEM |
|-----------------|------|------|----|----|------|-----|
| Angus One EPD | 7 | -1 | 44 | 71 | 22 | 8 |
| Percentile Rank | 19 | 16 | 34 | | 19 | |
| BOLT EPDs | 14.6 | -2.7 | 61 | 92 | 24 | 8.8 |

- heifer friendly, moderate stature, deep bodied
- Meg 661F, one our favourite young cows that will find a spot in the donor pen in the coming years. 661F is an easy keeping, good looking, refined female with dark red coloring and perfect udder. Wean ratio of 100 on 3 calves.

Lot 104 RED SIX MILE JACKSON 884J

Reg No: 2221630 / Tattoo: SIXM 884J / DOB: April 17 2021

RED NCJ COMING IN HOT 24E

RED SIX MILE RAWHIDE 222X

RED SIX MILE GENTRY 342G

RED SIX MILE MINERVA 584B

RED SIX MILE & CO LASSIE 417X

RED SIX MILE MINERVA 3Y

| Act BW 85 | Adj WW 770 | | Calving Ease Level 4 | | | |
|-----------------|------------|------|----------------------|----|------|-----|
| | CED | BW | WW | YW | Milk | CEM |
| Angus One EPD | 5 | 0.6 | 49 | 72 | 31 | 8 |
| Percentile Rank | 31 | | 18 | | 3 | 19 |
| BOLT EPDs | 10 | -1.9 | 61 | 83 | 29 | 5.1 |

- calving ease specialist, maternal pedigree, big rib and sound moving
- 584B is a Designated Elite Dam since 2020 with an average wean ratio of 116. She is the dam of Fifth Sense who is being used in many prominent herds across North America. Daughters have previously sold to Maple Oaks Cattle Co., or stayed in our herd with one daughter being 650G the dam of Lot 92.



104

Lot 105 RED SIX MILE GENTRY 858J

Reg No: 2232490 / Tattoo: SIXM 858J / DOB: April 07 2021

RED NCJ COMING IN HOT 24E

RED PIE ON THE MARK 5424

RED SIX MILE GENTRY 342G

SIX MILE JUNE 675F

RED SIX MILE & CO LASSIE 417X

SIX MILE JUNE 238D

| Act BW 78 | Adj WW 701 | | Calving Ease Level 4 | | | |
|-----------------|------------|-----|----------------------|----|------|-----|
| | CED | BW | WW | YW | Milk | CEM |
| Angus One EPD | 6 | 0.1 | 47 | 82 | 27 | 10 |
| Percentile Rank | 24 | 30 | 24 | 21 | 16 | 7 |

- outcross pedigree, deep red color, sensible frame size
- 675F is a black-red carrier female who has a refined, feminine front end with great udder attachment and teat size. She has two sons selling in this sale, with the other being Lot 83. Wean ratio of 100 on 3 calves.



105

Lot 106 RED SIX MILE SUN STEALTH 883J

Reg No: 2221629 / Tattoo: SIXM 883J / DOB: April 16 2021

PEAK DOT UNANIMOUS 586B

RED SIX MILE SIGNATURE 295B

RED SIX MILE STEALTH 269F

RED SIX MILE SARABELL 140D

RED SIX MILE MISS LARK 855A

RED SIX MILE SARABELL 313Y

| Act BW 82 | Adj WW 722 | | Calving Ease Level 2 | | | |
|-----------------|------------|-----|----------------------|----|------|-----|
| | CED | BW | WW | YW | Milk | CEM |
| Angus One EPD | 2 | 1.6 | 52 | 80 | 22 | 5 |
| Percentile Rank | | | 12 | 24 | | |
| BOLT EPDs | 10.2 | 0.2 | 63 | 92 | 20 | 4.6 |

- proud presence, stout and square from the ground up
- Sarabell 140D was a highlight female in GF 2021 selling to Peter Estabrooks. She is a dark red, larger framed female with great feet and bone. One son sold through a previous bull sale to Rancho EL Ocote and another to Ellwood Farms. Lifetime wean ratio of 100 on 5 calves born at Six Mile.



106



— 107 —

Lot 107 RED 6M BURNHAM RIDGE **MR RIVER**

Reg No: 2194150 / Tattoo: WFX 141J / DOB: March 27 2021

RED CRUMP POWDER RIVER 7787
RED SIX MILE MR RIVER 331G
 RED SIX MILE MS MEG 348E

RED SIX MILE JOHN WICK 882E
RED SIX MILE MARTA 315G
 RED SIX MILE MARTA 180E

| Act BW 62 | Adj WW | Calving Ease Level 3 to 4 | | | | | |
|------------------|--------|---------------------------|------|----|----|------|-----|
| | | CED | BW | WW | YW | Milk | CEM |
| Angus One EPD | | 6 | 0 | 51 | 81 | 28 | 5 |
| Percentile Rank | | 24 | 29 | 14 | 22 | 11 | |
| BOLT EPDs | | 13.9 | -2.7 | 64 | 97 | 29 | 8.2 |

- mellow temperament, deep flanked, sleep easy heifer bull, star studded maternal pedigree
- Marta 315G has two bulls in this year's sale and injected her spine length and maternal superiority to both of them. She is a maternal sister to Northbound 582H, a sale feature last year that was purchased by Duralta and Soderglen.
- Mr. River 331G was selected by the Walsh family for his strong maternal pedigree and calving ease attributes. He has seen heavy use in their purebred and commercial heifer pens over the past 3 years.

Lot 109 RED SIX MILE **REKONING** 823J

Reg No: 2236322 / Tattoo: SIXM 823J / DOB: April 01 2021

RED U-2 RECKONING 149A
RED SIX MILE RECKONING 691C
 RED SIX MILE COCA 423R

RED DKF RAZOR 55C
RED CC LEMAY 2F
 RED CC LEMAY 19D

| Act BW 80 | Adj WW 657 | Calving Ease Level 2 to 3 | | | | | |
|------------------|------------|---------------------------|------|----|----|------|-----|
| | | CED | BW | WW | YW | Milk | CEM |
| Angus One EPD | | 2 | 0.6 | 40 | 66 | 29 | 6 |
| Percentile Rank | | | | | | 7 | |
| BOLT EPDs | | 11.1 | -0.5 | 54 | 82 | 29 | 7.1 |

- moderate stature with a smooth look, great color, solid foot shape



— 108 —

Lot 108 RED 6M BURNHAM RIDGE **RIVERBANK**

Reg No: 2194152 / Tattoo: WFX 142J / DOB: March 27 2021

RED CRUMP POWDER RIVER 7787
RED SIX MILE MR RIVER 331G
 RED SIX MILE MS MEG 348E

RED U-2 RECKONING 149A
RED SIX MILE FANCY LADY 407F
 RED PASQUIA FANCY LADY 59X

| Act BW 92 | Adj WW | Adj YW | Calving Ease Level 1 | | | | | |
|------------------|--------|--------|----------------------|-----|----|-----|------|-----|
| | | | CED | BW | WW | YW | Milk | CEM |
| Angus One EPD | | | -6 | 4.3 | 62 | 99 | 31 | -1 |
| Percentile Rank | | | | | 2 | 4 | 3 | |
| BOLT EPDs | | | 8 | 2 | 77 | 117 | 33 | 5.7 |

- performance driven, top 3% for WW, YW & Milk, casts a large shadow, long athletic stride
- Fancy Lady 407F stems back to one of the first female purchases Callie and I made at the Pasquia Dispersal, Lady 59X. 407F is a stout featured, heavy milking, youthful young cow who has put two females back into the Walsh herd.

Lot 110 RED SIX MILE **ALIBI** 860J

Reg No: 2221615 / Tattoo: SIXM 860J / DOB: April 08 2021

RED ROJAS RIOJA 6052
RED KJHT FCF ALIBI
 RED SRA PAINTBUCKET

RED SIX MILE JUSTICE 293D
RED SIX MILE BAYBERRY 28F
 RED SIX MILE BAYBERRY 433D

| Act BW 82 | Adj WW 651 | Calving Ease Level 2 | | | | | |
|------------------|------------|----------------------|------|----|----|------|-----|
| | | CED | BW | WW | YW | Milk | CEM |
| Angus One EPD | | 2 | 2 | 32 | 50 | 33 | 3 |
| Percentile Rank | | | | | | 1 | |
| BOLT EPDs | | 11.3 | -0.4 | 54 | 81 | 34 | 6.3 |

- 28F is a big-bodied, easy keeping type of female. A son sold in a previous bull sale to the good people at Twin Curves Ranch Ltd. Average wean index of 104 on 2.

"Hey Tyson- Big news- We set a new high selling record at the sale barn today... Steer calves were mostly sired by SIX MILE bulls. They were buyers' choice over some high quality Charolais calves." Jordan Walsh of Walsh Farms ONT



— 111 —

Lot 111 RED SIX MILE **DILLINGER** 861J

Reg No: 2221627 / Tattoo: SIXM 861J / DOB: April 09 2021

RED VGV NAVIGATOR 010
RED 3SCC NORTHBOUND F344
 RED 3SCC POLLY B431

RED MRLA NEW ERA 87Y
RED SIX MILE SEXY SIERRA 175B
 RED SIX MILE SIERRA 257P

| Act BW 86 | Adj WW 727 | Calving Ease Level 2 | | | | |
|------------------|------------|----------------------|----|-----|------|-----|
| Angus One EPD | CED | BW | WW | YW | Milk | CEM |
| Percentile Rank | 3 | 2.1 | 54 | 93 | 31 | 6 |
| | | | 8 | 7 | 3 | |
| BOLT EPDs | 13.2 | -0.3 | 67 | 110 | 35 | 7.2 |

- added stretch and performance, top 10% WW,YW&Milk, female maker
- Natural calf off of donor dam Sierra 175B who is a maternal sister to the Genex Sire – Sakic. Daughters have sold to Smoky Y and Gemvale Stock Farms. A daughter 387G is the dam of Lot 63. Sons have been selected by astute cattlemen including Horse Creek Ranch, Sandbur Ridge Red Angus, Bar V Ranch and M Bar Ranch.



— 112 —

Lot 112 RED SIX MILE **LAWMAN** 888J

Reg No: 2268810 / Tattoo: SIXM 888J / DOB: April 19 2021

RED LAZY MC GUNNER 144B
RED CC LAWMAN 32E
 RED TER-RON ALICE 7T

PEAK DOT UNANIMOUS 586B
RED SIX MILE WITZEL 245F
 RED SIX MILE WITZEL 564A

| Act BW 81 | Adj WW 647 | Calving Ease Level 2 | | | | |
|-----------------|------------|----------------------|----|----|------|-----|
| Angus One EPD | CED | BW | WW | YW | Milk | CEM |
| Percentile Rank | 1 | 1 | 34 | 50 | 24 | 2 |

- larger outlined, level design, long and smooth
- 245F is a Witzel female who exhibited the tight and tidy udder Unanimous daughters are known for.

Lot 113 RED SIX MILE **EDDIE** 895J

Reg No: 2229959 / Tattoo: SIXM 895J / DOB: April 21 2021

RED OHRR 87R DAKOTA VIC 74B
RED SIX MILE EDDIE 500E
 RED SIX MILE MS TAFFETA 142B

RED STEWART PATHFINDER 5L
RED CC ESCORT 11E
 RED CC SHOWGIRL 30A

| Act BW 78 | Adj WW 658 | Adj YW | Calving Ease Level 4 | | | |
|------------------|------------|--------|----------------------|----|------|-----|
| Angus One EPD | CED | BW | WW | YW | Milk | CEM |
| Percentile Rank | 7 | -0.1 | 37 | 60 | 28 | 8 |
| | 19 | 27 | | | 11 | 19 |
| BOLT EPDs | 14.6 | -1.2 | 58 | 90 | 25 | 8.8 |

- cover more heifers with an extra age, bred and developed for longevity
- 11E stems back to 30A who is the dam of Lot 43. A larger framed female with lots of power.

Lot 114 RED SIX MILE **ROLEX** 900J

Reg No: 2255026 / Tattoo: SIXM 900J / DOB: May 01 2021

RED COCKBURN ASSASSIN 624D
RED RAINBOW ROLEX 15F
 RED RAINBOW DOLL 8D

RED U-2 RECKONING 149A
RED SIX MILE BESSIE 501F
 RED BAR-E-L BESSIE 144B

| Act BW 98 | Adj WW 745 | Adj YW | Calving Ease Level 1 | | | |
|-----------------|------------|--------|----------------------|----|------|-----|
| Angus One EPD | CED | BW | WW | YW | Milk | CEM |
| Percentile Rank | -8 | 5.1 | 48 | 82 | 26 | 0 |
| | | | 21 | 21 | 25 | |

- big statured with the longest stride, power bull
- Bessie 501F has one daughter that sold to Greg Slack. She has two sons in this sale with the other being Lot 22. She is a female who adds some stature and power into her offspring. Wean ratio of 114 on 3 calves.



— 115 —



— 116 —

Lot 115 RED SIX MILE MR WICK 899J

Reg No: 2229865 / Tattoo: SIXM 899J / DOB: April 24 2021

RED U-2 RECKONING 149A

RED BAR-E-LAPPROVAL 4L

RED SIX MILE JOHN WICK 882E

RED BAR-E-L SCARLET 193S

RED SIX MILE & CO GLORIA 29A

RED BL SPRUCE BARLEE 162G

Act BW 82 (ET) Adj WW 601 **Calving Ease Level 2**

| | CED | BW | WW | YW | Milk | CEM |
|-----------------|------|------|----|----|------|------|
| Angus One EPD | 2.5 | 2.2 | 49 | 81 | 25 | 10.5 |
| Percentile Rank | | | 21 | 22 | | 7 |
| BOLT EPDs | 11.5 | -0.5 | 65 | 99 | 26 | 9.6 |

- striking profile, athletic stride, added muscle shape
- 193S came to us from the Bar EL herd acquisition. Her most notable progeny would be donor female Frado 209U who has already left a lasting impression in our herd. We have two other impressive daughters of 193S retained in our herd.

Lot 116 RED SIX MILE LAWMAN 824J

Reg No: 2229204 / Tattoo: SIXM 824J / DOB: April 01 2021

RED LAZY MC GUNNER 144B

RED SIX MILE GAME FACE 164Y

RED CC LAWMAN 32E

RED SIX MILE MS LAKOTA 614A

RED TER-RON ALICE 7T

RED SIX MILE LAKOTA 173Y

Act BW 82 Adj WW 745 **Calving Ease Level 3**

| | CED | BW | WW | YW | Milk | CEM |
|-----------------|------|------|----|----|------|-----|
| Angus One EPD | 3 | 0.5 | 46 | 68 | 26 | 4 |
| Percentile Rank | | | 27 | | 25 | |
| BOLT EPDs | 11.2 | -0.6 | 59 | 85 | 26 | 6.7 |

- long and stretchy, productive dam, big solid foot
- Lakota 614A is a moderate statured, sound made female with a near perfect udder. Look for her daughter selling as Lot 212. Sons have previously sold to Mitch & Krystal Fisher, Harold Gilbert, Neil & Glen Mackenzie and Kevin Nelson. One daughter is working in our herd and one purchased by Troy Promesberger. This cow does not miss on producing saleable calves! Average wean ratio of 103 on 8 calves.

Lot 117 RED SIX MILE RECKON 929J

Reg No: 2229962 / Tattoo: SIXM 929J / DOB: May 07 2021

RED U-2 RECKONING 149A

STEWART PANTHER 19X

RED SIX MILE RECKONING 691C

CC POLLY 17Z

RED SIX MILE COCA 423R

RED CCY SAVANNAH 5U

Act BW 86 Adj WW 758 **Calving Ease Level 2**

| | CED | BW | WW | YW | Milk | CEM |
|-----------------|------|------|----|----|------|-----|
| Angus One EPD | 3 | 0.7 | 38 | 62 | 30 | 7 |
| Percentile Rank | | | | | 4 | 28 |
| BOLT EPDs | 11.7 | -0.1 | 56 | 85 | 27 | 8.5 |

- big solid foot, rugged build
- 17Z is a heavy milking powerful black-red carrier coming from the female maker Panther 19X. She has a daughter in this sale selling as Lot 211.

Lot 118 RED SIX MILE EDUARDO 933J

Reg No: 2229963 / Tattoo: SIXM 933J / DOB: May 08 2021

RED OHRR 87R DAKOTA VIC 74B

RED SIX MILE GAME FACE 164Y

RED SIX MILE EDDIE 500E

RED CC BIG BANG 6D

RED SIX MILE MS TAFFETA 142B

RED STEWART LADY 2X

Act BW 90 Adj WW 664 **Calving Ease Level 3**

| | CED | BW | WW | YW | Milk | CEM |
|-----------------|------|------|----|----|------|-----|
| Angus One EPD | 5 | 1.2 | 33 | 51 | 23 | 6 |
| Percentile Rank | 31 | | | | | |
| BOLT EPDs | 13.1 | -0.7 | 54 | 83 | 22 | 8.4 |

- good square toes, motors like a herd bull
- These Game Face x Lady 2X females are impressive to the eye. Big middled, gorgeous udders and sound at the ground.



119

Lot 119 SIX MILE CAT 844J

Reg No: 2221612 / Tattoo: SIXM 844J / DOB: April 05 2021

BAR-H CROSSFIRE 63A

BAR-H CROSSFIRE 63A

SIX MILE BREED CREEK CAT 235G SIX MILE MS BLACKBIRD 68D

SIX MILE LADY OF SIX 735A

SIX MILE MS BLACKBIRD 131B

Act BW 86 (ET) Adj WW 660 **Calving Ease Level 4**

| | CED | BW | WW | YW | Milk | CEM |
|-----------------|-----|-----|----|----|------|-----|
| Angus One EPD | 7 | 0.5 | 48 | 89 | 25 | 10 |
| Percentile Rank | 20 | 19 | | | 31 | 12 |



Sire of Lot 120 – Showman 338

- moderate stature, maternal pedigree, heifer pen friendly
- A son of 68D sold to Benchview Ranch Ltd. She has one daughter retained in herd. Blackbird 68D is simply stunning, the type of cow we wish we had pastures full of; moderate in her stature, easy keeping with a tremendous udder and a perfect foot. Wean ratio of 107 on 4 calves.

Lot 120 SIX MILE SHOWMAN 630J

Reg No: 2224308 / Tattoo: SIXM 630J / DOB: March 05 2021

SCHIEFELBEIN ATTRACTIVE 4565

SANKEYS JUSTIFIED 101

SCHIEFELBEIN SHOWMAN 338

SIX MILE ANNIE K 263C

FROSTY ELBA 3745

SIX MILE ANNIE K 917W

Act BW 74 (ET) Adj WW 628 Adj YW 1164 **Calving Ease Level 4**

| | CED | BW | WW | YW | Milk | CEM |
|-----------------|-----|-----|----|-----|------|-----|
| Angus One EPD | 6.5 | 0.5 | 65 | 121 | 28 | 5.5 |
| Percentile Rank | 27 | 19 | 13 | 8 | 11 | |

- calving ease specialist, expressive muscle pattern, solid foot design
- Donor Annie K 263C is an ultrafeminine female with a gorgeous udder. She has a full brother to this bull working for Everblack Angus. Other sons have sold to Vincent Boisvert and Breed Creek Ranch. Many daughters have been retained in herd. This is a gorgeous female that will instill maternal strength into your replacement pen.

Lot 121 SIX MILE PENDLETON 907J

Reg No: 2240130 / Tattoo: SIXM 907J / DOB: May 01 2021

DAMERON BEST IN CLASS

RED BAR-E-L APPROVAL 4L

WB PENDLETON 708 PVF SWSN

RED BAR-E-L BESSIE 259T

WB PVF SF LUCY 4033

RED BAR-E-L BESSIE 124P

Act BW 94 (ET) Adj WW 744 **Calving Ease Level 1**

| | CED | BW | WW | YW | Milk | CEM |
|-----------------|------|-----|----|----|------|-----|
| Angus One EPD | -0.5 | 3.2 | 52 | 84 | 26 | 5 |
| Percentile Rank | | | 12 | 19 | 34 | |

- large outlined and performance oriented, big paws, correct structure and lines
- At 16 years of age Bessie 259T still had the most incredible feet that you could find on a Red Angus female. A donor female that came from the Bar EL herd, 259T is big middled, powerfully constructed and sound. Since her time at Six Mile she has had sons sell to Glen Mackenzie, Rafter DF Ranch and Manske Ranch. One son was used selectively in our herd, the sire of Lot 83. One daughter works in the progressive Castonguay herd and many others have been retained here at Six Mile.
- Black-Red Carrier



122

Lot **122** SIX MILE **SIN CITY** 211K

Reg No: 2260234 / Tattoo: SIXM 211K / DOB: February 17 2022

KR CASINO 6243
RIVERSTONE VEGAS 49H
 COLEMAN DIXIE ERICA 3372

ANDERSON REFLECTION 1341
SIX MILE LASSIE 461D
 SIX MILE LASSIE 517A

| Act BW 88 | Adj WW 765 | Adj YW 1347 | Calving Ease Level 2 | | | |
|-----------------|------------|-------------|-----------------------------|-----|------|-----|
| Angus One EPD | CED | BW | WW | YW | Milk | CEM |
| Percentile Rank | 5 | 2.1 | 65 | 111 | 33 | 7 |
| | 35 | | 13 | 17 | 2 | |



Alternate View of Lor 122

- sale feature, powerful build, wide topped and based, great cow family
- 461D comes from one of our most influential Black Angus Cow Familisthe Lassies who all stem back to 703T. 461D has produced herdsires for Anderson Ranch, Iron Plains Ag., and Sayers Farm Ltd. She has an average wean ratio of 108 on 5 calves.
- We are very eager to see the impact Vegas will have in our program and the Angus breed. Vegas was halter broke as a mature bull after two breeding seasons and in his maiden voyage through a showing, he captured Reserve Angus Bull in Denver this past January. His breeding prowess will extend way beyond his short and successful show career. Vegas is big footed, super sound, with an extra shot of body and frame.
- **Terms to be announced**



Sire - Vegas 49H

Rugged, Burly and *Fresh*



123

Lot **123** SIX MILE TJB **MR RIVER** 83K

Reg No: 2259763 / Tattoo: SIXM 83K / DOB: February 05 2022

ELLINGSON HOMESTEAD 6030

BAR-H CROSSFIRE 63A

ELLINGSON THREE RIVERS 8062

SIX MILE BLACKBIRD 432F

EA EMBLYNETTE 6279

SIX MILE BLACKBIRD 390C

Act BW 87 Adj WW 856 Adj YW 1435 **Calving Ease Level 1**

| Angus One EPD Percentile Rank | CED | BW | WW | YW | Milk | CEM |
|----------------------------------|-----|-----|----|-----|------|-----|
| | | 3.2 | 90 | 162 | 22 | |
| | | | 1 | 1 | | |

- sale feature, stout and powerful, easy-going demeanour, high performance
- Blackbird 432F is a female that we jointly own with Mr. Tyson (TyTy) Buist. She has an overwhelming amount of body shape, a gorgeous build and excellent udder attachment. Her bull last year was a feature selling for \$10,500 to Dragonview. Wean ratio of 117 on 3 calves.



Dam – Blackbird 432F



Sire of Lots 123 and 124 – Three Rivers 8062

The Pen *Powerhouse*



— 124 —

Lot **124** SIX MILE **THREE RIVERS** 195K

Reg No: 2260222 / Tattoo: SIXM 195K / DOB: February 16 2022

ELLINGSON HOMESTEAD 6030
ELLINGSON THREE RIVERS 8062
 EA EMBLYNETTE 6279

CONNEALY COMPLETE 8454
SIX MILE DUCHESS 172B
 DUCHESS OF PEAK DOT 450R

Act BW 83 Adj WW 780 Adj YW 1330 **Calving Ease Level 1**

| Angus One EPD | CED | BW | WW | YW | Milk | CEM |
|-----------------|-----|-----|----|-----|------|-----|
| Percentile Rank | 0 | 2.8 | 81 | 144 | 21 | 8 |
| | | | 1 | 1 | | 31 |

- chart-topping growth EPD's, proven cow family, sound and flexible
- 172B is a productive cow with sons selling to Anderson Ranch, Warren & Paige Feser, as well as North Point Angus. She is moderate in stature, with lots of middle and an ideal udder. One daughter retained in herd and is a favorite of the first calf heifer group. Average wean ratio of 109 on 6 calves.

Duchess 172B
 Proved her way to our *Donor Pen*



Maternal Brother – Crossfire 370F



Maternal Brother – Mr Showman 159H



— 125 —

Lot 125 SIX MILE **DIESEL** 137K

Reg No: 2268270 / Tattoo: SIXM 137K / DOB: February 11 2022

REMITALL F BRIGADIER 86B
REMITALL F DIESEL 76D
 REMITALL F JET 74Y

BCAR HEAVY DUTY 096
SIX MILE JUNE 137Z
 JUNE OF PEAK DOT 421S

| | Act BW 80 | Adj WW 735 | Adj YW 1313 | Calving Ease Level 3 | | |
|------------------------|-----------|------------|-------------|-----------------------------|---------|-------|
| Angus One EPD | CED 6 | BW 1.6 | WW 62 | YW 123 | Milk 21 | CEM 8 |
| Percentile Rank | 27 | | 18 | 7 | | 31 |

- sale feature, smooth made, long bodied, prolific dam
- 137Z was Designated a Premier Dam by the CAA in 2021an incredible feat. Sons have sold to Lost River Colony, Brad Sayers and the Manske family. A daughter is working at Bar H Land and Cattle. She has two daughters retained in herd, 3 grand-daughters and 2 greatgranddaughters. Her daughter 238D is the mother to Lot 127. Her grand-daughter 675F is the dam to Lots 83 & 105. Talk about longevity and fertility. Wean ratio of 105 on 8 calves.



Alternate view of Lot 125



Sire of Lots 125 to 131 - Diesel 76D



126

Lot 126 SIX MILE **DIESEL** 192K

Reg No: 2268262 / Tattoo: SIXM 192K / DOB: February 16 2022

REMITALL F BRIGADIER 86B
REMITALL F DIESEL 76D
 REMITALL F JET 74Y

S A V PREFERENCE 9184
SIX MILE DIANA 146Z
 SIX MILE DIANA 872U

Act BW 98 Adj WW 686 Adj YW 1166 **Calving Ease Level 1**

| Angus One EPD | CED | BW | WW | YW | Milk | CEM |
|-----------------|-----|-----|----|-----|------|-----|
| Percentile Rank | 0 | 4.3 | 55 | 112 | 23 | 3 |
| | | | | 15 | | |

- heavy structured, striking profile, Elite Dam
- 146Z is a CAA Elite Dam who thumps out big footed, high performing offspring year after year. Sons have sold in previous years to Karl and Dezzy Checkoway, Sunrise Trail Acres, Clear Ridge Farms and Anderson Ranch. One daughter sold through Genetic Focus 2021 to Twin Curves Ranch. She has in incredible wean ratio of 108 on 9 calves.



127

Lot 127 SIX MILE **DIESEL** 299K

Reg No: 2275539 / Tattoo: SIXM 299K / DOB: February 23 2022

REMITALL F BRIGADIER 86B
REMITALL F DIESEL 76D
 REMITALL F JET 74Y

ANDERSON REFLECTION 1341
SIX MILE JUNE 238D
 SIX MILE JUNE 137Z

Act BW 86 Adj WW 722 Adj YW 1338 **Calving Ease Level 3**

| Angus One EPD | CED | BW | WW | YW | Milk | CEM |
|-----------------|-----|-----|----|-----|------|-----|
| Percentile Rank | 6 | 1.7 | 56 | 114 | 23 | 8 |
| | 27 | | 35 | 13 | | 31 |

- proud presence, dense muscle, productive cow family
- A hard working June female here. Her daughter 675F has two bulls in the sale as Lots 83 & 105. She also has two other daughters retained in herd. One son sold to KN Farms. 238D is moderate in stature, with a nice udder and great depth of rib. Average wean ratio of 102 on 6 calves.



128

Lot 128 SIX MILE **DIESEL** 197K

Reg No: 2273826 / Tattoo: SIXM 197K / DOB: February 16 2022

REMITALL F BRIGADIER 86B
REMITALL F DIESEL 76D
 REMITALL F JET 74Y

S A V PREFERENCE 9184
SIX MILE HEROINE 358Y
 ISLA BANK HEROINE 36'00

Act BW 86 Adj WW 748 Adj YW 1241 **Calving Ease Level 2**

| Angus One EPD | CED | BW | WW | YW | Milk | CEM |
|-----------------|-----|-----|----|-----|------|-----|
| Percentile Rank | 4 | 2.4 | 53 | 113 | 26 | 4 |
| | | | | 14 | 23 | |

- moderate and chunky, calm demeanor, soft and easy fleshing
- Heroine 358Y is a Designated Elite Dam since 2017 with 10 calves and an impressive 106 wean ratio. Daughters have sold to Ollenberger Stock Farms, Iron Plains Ag., and a couple have been retained in herd. 358Y calved with her 11th natural calf, talk about longevity!

Lot 129 SIX MILE DIESEL 239K

Twin Reg No: 2280712 / Tattoo: SIXM 239K / DOB: February 19 2022

REMITALL F BRIGADIER 86B
REMITALL F DIESEL 76D
 REMITALL F JET 74Y

BAR-H CROSSFIRE 63A
SIX MILE MS BLACKBIRD 979E
 SIX MILE MS BLACKBIRD 386C

| Act BW 62 | Adj WW 634 | Adj YW 1141 | Calving Ease Level 3 | | | |
|-----------------|------------|-------------|-----------------------------|----------|------|-----|
| Angus One EPD | CED | BW | WW | YW | Milk | CEM |
| Percentile Rank | 4 | 2.5 | 59 26 | 119 9 | 23 | 6.5 |

- hairy, flexible and fluid movement, balanced phenotype and genotype
- Ms. Blackbird 979E is a beautiful, big-bodied female. A maternal sister to 979E is 697G the dam of Lot 132. This cow family is truly one to tie into. Sons of 979E have sold to the Manske Family as well as the Anderson Family. 979E has a wean index of 104 on 4 calves.



129

Lot 130 SIX MILE DIESEL 452K

Reg No: 2275530 / Tattoo: SIXM 452K / DOB: March 20 2022

REMITALL F BRIGADIER 86B
REMITALL F DIESEL 76D
 REMITALL F JET 74Y

BAR-H CROSSFIRE 63A
SIX MILE FANNY 576F
 SIX MILE FANNY 246B

| Act BW 86 | Adj WW 801 | Adj YW 1241 | Calving Ease Level 3 to 4 | | | |
|-----------------|------------|-------------|----------------------------------|----------|------|-----|
| Angus One EPD | CED | BW | WW | YW | Milk | CEM |
| Percentile Rank | 6 | 1.1 | 64 14 | 125 6 | 24 | 6 |

- calving ease option, top 10% WW and top 3% YW, soggy and soft bodied
- 576F is a nice uddered Crossfire daughter. Our Crossfire females all have great udders and bring in good calves at weaning time. 576F has one daughter retained in herd. 115 wean ratio on 3 calves.



130

Lot 131 SIX MILE DIESEL 247K

Reg No: 2275507 / Tattoo: SIXM 247K / DOB: February 19 2022

REMITALL F BRIGADIER 86B
REMITALL F DIESEL 76D
 REMITALL F JET 74Y

MUSGRAVE FOUNDATION
JL MS ERICA 4166
 HOWE MS ERICA 36L

| Act BW 86 | Adj WW 714 | Adj YW 1268 | Calving Ease Level 2 to 3 | | | |
|-----------------|------------|-------------|----------------------------------|-----------|------|-----|
| Angus One EPD | CED | BW | WW | YW | Milk | CEM |
| Percentile Rank | 5 | 1.6 | 53 | 106 23 | 24 | 6 |

- sound moving, long-bodied, added stretch and frame
- Erica 166B has an outcross pedigree for our herd and is a proven producer. She is heavy milking and has problem-free feet and udder. She has sons working for Zanobia Angus and Manske's. She has a wean ratio of 112 on 7 calves.



131



132

132

- chart-topping growth and milk EPD's, hairy and proud, stout build
- Blackbird 697G is a female that we own with Allison Farms. She is a maternal sister to 979E who is the dam of Lot 129. She is capacious, gorgeous fronted and wedge shaped. A daughter sold through our Genetic Focus Female Sale to 66 Ranch. 697G boasts a wean index of 108 on 2 calves.



Dam - Blackbird 697G

Lot 132 SIX MILE ALLISON **SHOWMAN** 246K

Reg No: 2277654 / Tattoo: SIXM 246K / DOB: February 19 2022

SCHIEFELBEIN ATTRACTIVE 4565

REMITALL F DIESEL 76D

SCHIEFELBEIN SHOWMAN 338

SIX MILE BLACKBIRD 697G

FROSTY ELBA 3745

SIX MILE MS BLACKBIRD 386C

Act BW 88 Adj WW 719 Adj YW 1347 **Calving Ease Level 3**

| | CED | BW | WW | YW | Milk | CEM |
|-----------------|-----|-----|----|-----|------|-----|
| Angus One EPD | | 2.1 | 70 | 136 | 29 | |
| Percentile Rank | | | 6 | 2 | 8 | |

Lot 133 SIX MILE MR **SHOWMAN** 71K

Reg No: 2259735 / Tattoo: SIXM 71K / DOB: February 03 2022

SCHIEFELBEIN ATTRACTIVE 4565

BAR-H CROSSFIRE 63A

SCHIEFELBEIN SHOWMAN 338

SIX MILE TIBBIE 39H

FROSTY ELBA 3745

SIX MILE TIBBIE 274F

Act BW 79 Adj WW 813 Adj YW 1390 **Calving Ease Level 4**

| | CED | BW | WW | YW | Milk | CEM |
|-----------------|-----|-----|----|-----|------|-----|
| Angus One EPD | 8 | 0.7 | 79 | 146 | 29 | 8 |
| Percentile Rank | 15 | 22 | 2 | 1 | 8 | 31 |



133

133

- sale feature, big hip and top, huge spread from birth to yearling, strong maternal lineage
- We are excited about the future of 39H. She is a powerfully constructed Crossfire daughter coming from the Tibbie cow family. She raised this calf with a 121 wean ratio.



Sire of Lots 132 & 133 - Showman 338



134



135

Lot 134 SIX MILE **MR SHOWTIME** 234K

Reg No: 2264086 / Tattoo: SIXM 234K / DOB: February 19 2022

SCHIEFELBEIN SHOWMAN 338
SIX MILE SHOWTIME 80H
 SIX MILE ANNIE K 263C

MAY-WAY BREAKOUT 1310
SIX MILE FERNETTA 172E
 BENDORA FERNETTA 1'05

| Act BW 84 | Adj WW 662 | Adj YW 1175 | Calving Ease Level 4 | | | |
|-----------------|------------|-------------|-----------------------------|-----|------|-----|
| Angus One EPD | CED | BW | WW | YW | Milk | CEM |
| Percentile Rank | 5 | 1 | 55 | 104 | 25 | 8 |
| | 35 | 27 | | 26 | 31 | 31 |

- sound, heifer pen candidate, smooth jointed
- 172E is a hard working Breakout daughter who exhibits a tight and tidy udder. She has weaned off 4 calves with an average ratio of 103.

Lot 135 SIX MILE **MR SHOWMAN** 78K

Reg No: 2259736 / Tattoo: SIXM 78K / DOB: February 04 2022

SCHIEFELBEIN ATTRACTIVE 4565
SCHIEFELBEIN SHOWMAN 338
 FROSTY ELBA 3745

ANCHORAGE TRENDSEEKER 8011
SIX MILE TIBBIE 316H
 SIX MILE TEMPTING TIBBIE 280C

| Act BW 78 | Adj WW 795 | Adj YW 1314 | Calving Ease Level 3 to 4 | | | |
|-----------------|------------|-------------|----------------------------------|-----|------|-----|
| Angus One EPD | CED | BW | WW | YW | Milk | CEM |
| Percentile Rank | 6 | 1.3 | 73 | 130 | 28 | 8 |
| | 27 | 33 | 4 | 4 | 11 | 31 |

- moderate stature, stout, top 2% WW and YW
- Tibbie 316H is a direct daughter of our Tibbie donor – 280C. 316H worked hard, raising this first calf with an impressive 119 wean ratio.

Lot 136 SIX MILE **DIESEL** 149K

Reg No: 2271356 / Tattoo: SIXM 149K / DOB: February 12 2022

REMITALL F BRIGADIER 86B
REMITALL F DIESEL 76D
 REMITALL F JET 74Y

JINDRA 3RD DIMENSION
SIX MILE MS LASS 342C
 SIX MILE LASS 463Y

| Act BW 82 | Adj WW 666 | Adj YW 1119 | Calving Ease Level 4 | | | |
|-----------------|------------|-------------|-----------------------------|-----|------|-----|
| Angus One EPD | CED | BW | WW | YW | Milk | CEM |
| Percentile Rank | 8 | 1 | 49 | 106 | 21 | 9 |
| | 15 | 27 | | 23 | | 20 |

- smooth build, wide chest floor, moderate framed
- 342C has one daughter retained in herd, and one daughter working for Strongbow Farms. She has an average wean ratio of 99 on 6 calves.

Lot 137 SIX MILE **DIESEL** 391K

Reg No: 2275525 / Tattoo: SIXM 391K / DOB: March 09 2022

REMITALL F BRIGADIER 86B
REMITALL F DIESEL 76D
 REMITALL F JET 74Y

BAR S RANGE BOSS 4002
MERIT MISS QUALITY 9129G
 MERIT MISS QUALITY 5030C

| Act BW 79 | Adj WW 712 | Adj YW 1089 | Calving Ease Level 4 | | | |
|-----------------|------------|-------------|-----------------------------|----|------|-----|
| Angus One EPD | CED | BW | WW | YW | Milk | CEM |
| Percentile Rank | 6 | 1.6 | 48 | 99 | 23 | 8 |
| | 27 | | | 35 | | 31 |

- soft ribbed, uniform body depth, flat shoulder, square toes
- 9129G is a feminine fronted Range Boss daughter who we bought from Merit Cattle. She has the great udder that Range Boss is daughters are known for. 9129G has a wean index of 104.



— 138 —

Lot 138 SIX MILE **DEFIANCE** 18K

Reg No: 2271347 / Tattoo: SIXM 18K / DOB: January 20 2022

YOUNG DALE HI DEFINITION 185B
YOUNG DALE DEFIANCE 199F
 YOUNG DALE GRACE 126Z

BAR-E-L PAYCHECK 61F
MCNEELY LC DIEDRA 25H
 MCNEELY LC 127A DIEDRA 4D



Sire of Lot 138 – Defiance 199F



Sire of Lots 139 to 142 – Honour 16H

Act BW 90 Adj WW 684 Adj YW 1228 **Calving Ease Level 1**

| | CED | BW | WW | YW | Milk | CEM |
|-----------------|-----|-----|----|-----|------|-----|
| Angus One EPD | -6 | 5.3 | 58 | 102 | 24 | -1 |
| Percentile Rank | | | 28 | 29 | | |

- densely muscled, fresh pedigree, proud
- 25H was purchased from Dusty Rose's Production Sale. She is a solid footed young cow with a level udder.



— 139 —

Lot 139 SIX MILE **HONOUR** 162K

Reg No: 2259984 / Tattoo: SIXM 162K / DOB: February 13 2022

SIX MILE FORT KNOX 27F
YOUNG DALE HONOUR 16H
 YOUNG DALE ELBA 34F

S AV PREFERENCE 9184
SIX MILE DARK STAR 299Z
 SIX MILE DARK STAR 822U

Act BW 75 Adj WW 624 Adj YW 1074 **Calving Ease Level 4**

| | CED | BW | WW | YW | Milk | CEM |
|-----------------|-----|-----|----|----|------|-----|
| Angus One EPD | 10 | 0.5 | 46 | 76 | 29 | 9 |
| Percentile Rank | 7 | 19 | | | 8 | 20 |

- hairy, sensibly sized, calving ease oriented
- 299Z is a Designated Elite Dam with the CAA since 2018. She is longmade, stands on sound feet and has a fault free udder. Sons have sold to great local customers of Dustin Grant, Miles and Sherri Anderson, Brad Sayers and Shaylor Layman. One daughter is retained in herd. Wean ratio of 104 on 8 calves.

Lot 140 SIX MILE HONOUR 165K

Twin Reg No: 2271358 / Tattoo: SIXM 165K / DOB: February 13 2022

SIX MILE FORT KNOX 27F
YOUNG DALE HONOUR 16H
 YOUNG DALE ELBA 34F

SIX MILE DESERT STORM 94D
SIX MILE BLAIR'S BEAUTY 171F
 SIX MILE REAL BEAUTY 803U

Act BW 62 Adj WW 687 Adj YW 1126 **Calving Ease Level 3**

| | CED | BW | WW | YW | Milk | CEM |
|-----------------|-----|-----|----|----|------|-----|
| Angus One EPD | 3 | 2.1 | 43 | 80 | 23 | 6.5 |
| Percentile Rank | | | | | | |

- smooth made, sound, proud and athletic
- 171F is a deep-sided, sound made female from the Beauty cow family.
- Beauty 803U was a donor female for ourselves and Blairs. Ag. This mating with Desert Storm created a beautiful female in 171F. We expect a very productive future of her.



140

Lot 141 SIX MILE HONOUR 181K

Reg No: 2260215 / Tattoo: SIXM 181K / DOB: February 15 2022

SIX MILE FORT KNOX 27F
YOUNG DALE HONOUR 16H
 YOUNG DALE ELBA 34F

SILVEIRAS S SIS GQ 2353
SIX MILE MS BLACKBIRD 40E
 SIX MILE BLACKBIRD 16X

Act BW 78 Adj WW 610 Adj YW 1055 **Calving Ease Level 4**

| | CED | BW | WW | YW | Milk | CEM |
|-----------------|-----|-----|----|----|------|-----|
| Angus One EPD | 7.5 | 0.1 | 44 | 79 | 21 | 7.5 |
| Percentile Rank | 20 | 14 | | | | |

- super hairy, soggy made, proven Blackbird cow family
- 40E is another female from the Blackbird cow family. She catches your eye from the side profile with an elegant front end and picture-perfect udder. She has one son working for Lee Woloshyn.



141

Lot 142 SIX MILE HONOUR 473K

Reg No: 2267763 / Tattoo: SIXM 473K / DOB: March 22 2022

SIX MILE FORT KNOX 27F
YOUNG DALE HONOUR 16H
 YOUNG DALE ELBA 34F

SANDY BAR DIRECT 15U
BREED CREEK SUSIE 204Z
 BREED CREEK SUSIE 864

Act BW 86 Adj WW 788 Adj YW 1169 **Calving Ease Level 3**

| | CED | BW | WW | YW | Milk | CEM |
|-----------------|-----|-----|----|-----|------|-----|
| Angus One EPD | 4 | 1.6 | 62 | 102 | 22 | 6 |
| Percentile Rank | | | 18 | 29 | | |

- striking profile, big topped, correct angles and build
- Susie 42Z came to us from Breed Creek – Clint and Suzy Smith & family. One daughter sold to Garrett Ulrich, and two others retained in herd. One son was selected by Warren and Paige Feser. 9 Calves for average wean ratio of 96.



142



Lot 143 SIX MILE **NORTHBOUND** 423K

Reg No: 2279360 / Tattoo: SIXM 423K / DOB: March 16 2022
 RED VGW NAVIGATOR 010 BAR-H CROSSFIRE 63A
RED 3SCC NORTHBOUND F344 **SIX MILE TIBBIE 449D**
 RED 3SCC POLLY B431 MVF TIBBIE 326S

| Act BW 94 | Adj WW 803 | Adj YW 1310 | Calving Ease Level 2 | | | |
|-----------------|------------|-------------|-----------------------------|-----|------|-----|
| | CED | BW | WW | YW | Milk | CEM |
| Angus One EPD | 3 | 2.7 | 60 | 111 | 31 | 8 |
| Percentile Rank | | | 3 | 1 | 3 | 19 |

- proud, powerful, awesome cow family
- Tibbie 449D is an elegant fronted, levelmade, moderate statured female with well above average milk production. Her first two daughters are highlight young females in our black angus herd. One son resides at Swan Hills Ranch in Manitoba. Average wean index on 5 calves of 108.
- Black -Red Carrier

143



Lot 144 SIX MILE **ROUSH** 61K

Reg No: 2272059 / Tattoo: SIXM 61K / DOB: February 02 2022
 RED MANN RED BOX 55C RED SIX MILE WELLINGTON 720W
RED SIX MILE ROUSH 747G **SIX MILE BAYBERRY 15Z**
 RED TOPLINE MARTA 807 SIX MILE BAYBERRY 501U

| Act BW 88 | Adj WW 800 | Adj YW 1257 | Calving Ease Level 1 | | | |
|-----------------|------------|-------------|-----------------------------|-----|------|-----|
| | CED | BW | WW | YW | Milk | CEM |
| Angus One EPD | 1 | 1.6 | 64 | 102 | 30 | 6 |
| Percentile Rank | | | 2 | 3 | 4 | |

- excellent growth EPD's, long and stretchy outline, high maternal worth
- Bayberry 15Z is one of our most prolific balck red carrier cows. She has been Designated Elite since 2018 with 9 calves and an average wean ratio of 112. Daughters have found homes at J6 Farms, Niobrara Red Angus, Smoky Y Ranch and Reverse GC Red Angus. One daughter is retained in herd and is the dam of Lot 90. One son sold to Anderson Ranch. 15Z redefines the word "productive" a no miss, problem free, high performance, fertile female.
- Black -Red Carrier

144



Lot 145 SIX MILE **INSIGHTFUL** 488K

Reg No: 2280710 / Tattoo: SIXM 488K / DOB: March 24 2022
 PVF INSIGHT 0129 CONNEALY COMPLETE 8454
SIX MILE INSIGHTFUL 791G **SIX MILE MS SOXRO 423F**
 RED BAR-E-L GLORIA 87R RED SIX MILE SOXRO 461X

| Act BW 84 | Adj WW 822 | Adj YW 1254 | Calving Ease Level 2 to 3 | | | |
|-----------------|------------|-------------|----------------------------------|----|------|-----|
| | CED | BW | WW | YW | Milk | CEM |
| Angus One EPD | 4 | 1.1 | 52 | 87 | 28 | 3 |
| Percentile Rank | | 29 | | | 11 | |

- smooth and attractive, heifer pen friendly, deep ribbed
- 423F is a Complete daughter that is perfect footed and balanced from every angle. She milks heavy with a weaning ratio of 106 on 3 calves.

145

Lot 146 SIX MILE VOLTAGE 75K

Reg No: 2272060 / Tattoo: SIXM 75K / DOB: February 04 2022

SCHIEFELBEIN SHOWMAN 338
SIX MILE VOLTAGE 130H
RED SIX MILE SHAWNEE 974A

RED MRLA UPLoad 165E
RED SIX MILE FAYE 52H
RED SIX MILE FAYE 52F

Act BW 86 Adj WW 763 Adj YW 1221 **Calving Ease Level 1 to 2**

| | CED | BW | WW | YW | Milk | CEM |
|-----------------|-----|-----|----|-----|------|-----|
| Angus One EPD | -4 | 2.4 | 60 | 105 | 29 | -1 |
| Percentile Rank | | | 3 | 2 | 7 | |

- exciting pedigree, bold and expressive muscle,
- Faye 52H, an Upload daughter who worked hard to raise this first calf off with an impressive 112 wean ratio. Tidy udder structure with ample milk production.
- Black -Red Carrier

Lot 148 SIX MILE STARK 278K

Reg No: 2275483 / Tattoo: SIXM 278K / DOB: 22-Feb-22

BLACK WHEEL DRACARYS 178E
RED WHEEL STARK 67G
RED WHEEL ROSE 66C

PEAK DOT ELIMINATOR 100Z
SIX MILE MS DARK STAR 161E
SIX MILE MS DARK STAR 583A

Act BW 92 Adj WW 802 Adj YW 1286 **Calving Ease Level 1**

| | CED | BW | WW | YW | Milk | CEM |
|-----------------|-----|-----|----|-----|------|-----|
| Angus One EPD | -2 | 2.9 | 66 | 112 | 22 | 1 |
| Percentile Rank | | | 1 | 1 | | |

- rugged and burly, super shaggy and sound, pen favourite
- This cow is impressive to look at her and even moreso when you look at her production record. 161E gets it done!! She was Designated Elite as of 2021 with a wean ratio of 112 on 4 calves. One son sold to Dvorak Brothers. 2 daughters were retained in herd. 161E is destined for the donor pen.
- Black -Red Carrier

Lot 150 SIX MILE BLUEPRINT 489K

Reg No: 2274986 / Tattoo: SIXM 489K / DOB: March 24 2022

WOODHILL BLUEPRINT
WOODHILL BLUEPRINT A155-H110
WOODHILL BLACKBIRD T44-A155

CONNEALY COMPLETE 8454
SIX MILE MISS MAY 629A
BLAIR'S MISS MAY 601X

Act BW 94 Adj WW 728 Adj YW 1233 **Calving Ease Level 1**

| | CED | BW | WW | YW | Milk | CEM |
|-----------------|-----|----|----|-----|------|-----|
| Angus One EPD | -1 | 4 | 57 | 108 | 31 | 2 |
| Percentile Rank | | | 32 | 20 | 4 | |

- long level spined, sound at the ground
- 629A is a solid made Complete daughter. Perfect udder and problem-free feet. Sons have sold previously to Anderson Ranch, Forbes Ranch and MCDC Cattle. Two high quality daughters have been retained in herd. Wean ratio of 105 on 8 calves.

Lot 147 SIX MILE INSIGHTFUL 249K

Reg No: 2272062 / Tattoo: SIXM 249K / DOB: February 20 2022

PVF INSIGHT 0129
SIX MILE INSIGHTFUL 791G
RED BAR-E-L GLORIA 87R

RED BRYLOR REDWOOD 50U
RED SIX MILE DUCHESS 548A
RED SIX MILE DUCHESS 989N

Act BW 98 Adj WW 674 Adj YW 1058 **Calving Ease Level 1**

| | CED | BW | WW | YW | Milk | CEM |
|-----------------|-----|-----|----|----|------|-----|
| Angus One EPD | -1 | 2.9 | 40 | 76 | 26 | 4 |
| Percentile Rank | | | 32 | 32 | 25 | |

- heavy muscled, big top
- Duchess 548A has a son named Revenant working in the US for Robinson Cattle Co. and he is causing quite a stir with a daughter being named Calf Champion at OKC. Another son sold to 3 Musketeers Co. A daughter by Alibi just calved and has a flawless udder. Average wean ratio of 101 on 8 calves.
- Black -Red Carrier

Lot 149 SIX MILE WALK OFF 375K

Reg No: 2298696 / Tattoo: SIXM 375K / DOB: March 07 2022

RED NCJ COMING IN HOT 24E
RED SIX MILE WALK OFF 269H
RED SIX MILE MARTA 289C

CONNEALY COMPLETE 8454
SIX MILE BEYOND BEAUTY 555E
SIX MILE BEYOND BEAUTY 124Y

Act BW 70 Adj WW 649 Adj YW 1145 **Calving Ease Level 2**

| | CED | BW | WW | YW | Milk | CEM |
|-----------------|-----|------|----|----|------|-----|
| Angus One EPD | 6 | -0.5 | 52 | 83 | 25 | 8 |
| Percentile Rank | 24 | 22 | 12 | 19 | 35 | 19 |

- long bodied and hip, excellent toe shape, bold and opened up
- long and stretchy, 555E stems back to the high powered Beauty cow line. These females add power, performance and stature to their calves.
- Average wean ratio of 95 on 4 calves.
- Black -Red Carrier

Lot 151 SIX MILE BLUEPRINT 494K

Reg No: 2267812 / Tattoo: SIXM 494K / DOB: March 25 2022

WOODHILL BLUEPRINT
WOODHILL BLUEPRINT A155-H110
WOODHILL BLACKBIRD T44-A155

REMITALL F DIESEL 76D
SIX MILE LASSIE 547G
SIX MILE LASSIE 373Y

Act BW 88 Adj WW 732 Adj YW 1148 **Calving Ease Level 2**

| | CED | BW | WW | YW | Milk | CEM |
|-----------------|-----|-----|----|-----|------|-----|
| Angus One EPD | 3 | 2.7 | 62 | 120 | 31 | 3 |
| Percentile Rank | | | 18 | 8 | 4 | |

- correct build, superior foot design, complete and functional type
- Lassie 547G is a gorgeous female out of our donor - Lassie 373Y. She exhibits a sweeping rib cage, near-perfect udder and is sound made. This is one of our favorite black angus cow families! Wean ratio of 107 on 2 calves.



200

- Your eyes will quickly find Pride 51K in the pen with her overwhelming amount of body mass and cow power. A mainstay in the Six Mile herd, this branch of the Pride cow family originated at Jefferies Land and Cattle in Oklahoma. The grand-dam and great grand-dam of Lot 200 both have bulls in this sale, reaffirming the stay-ability in this cow family. Top 1% for WW & YW



Dam - Pride 13H

Lot 200 RED SIX MILE BCAR PRIDE 51K

Reg No: 2282850 / Tattoo: SIXM 51K / DOB: February 02 2022

RED SSS TYCOON 225E

RED NCJ COMING IN HOT 24E

RED W SUNRISE TYPHOON 604H

RED SIX MILE PRIDE 13H

RED HOWE JOANNA 145C

RED SIX MILE MS PRIDE 99F

Act BW 74

Adj WW 637

| | CED | BW | WW | YW | Milk | CEM |
|-----------------|------|-----|----|-----|------|-----|
| Angus One EPD | 3 | 1.4 | 65 | 112 | 24 | 9 |
| Percentile Rank | | | 1 | 1 | | 12 |
| BOLT EPDs | 11.3 | -1 | 75 | 116 | 26 | 7.5 |

Lot 201 RED SIX MILE TRENDY 286K

Reg No: 2266737 / Tattoo: SIXM 286K / DOB: February 22 2022

RED RIDGE PRAGMATIC 6098

CC LICORICE 13A

RED RIDGE WRANGLER 9096

RED CC TRENDY 38E

RED RIDGE AQUILA 552-8066

RED CC TRENDY 9B

Act BW 76

Adj WW 558

| | CED | BW | WW | YW | Milk | CEM |
|-----------------|------|------|----|----|------|-----|
| Angus One EPD | 4 | 0.1 | 44 | 71 | 36 | 5 |
| Percentile Rank | | 30 | 34 | | 1 | |
| BOLT EPDs | 14.4 | -2.5 | 60 | 95 | 27 | 9.3 |



201

- Sappy body shape in a sensible frame size; these Wrangler females may be the best kept secret in the Red Angus breed with their easy keeping build and unrivaled udder quality. Dam of Lot 201, Trendy 38E, is an honest, problem free cow who stands on an awesome foot design and exhibits a square balanced udder.



Sire - Wrangler 9096

202

- A performance leader among her contemporaries, Olympia 349K represents the first calf crop from Typhoon 604H. This sire group has exceeded expectations here at Six Mile with their remarkable consistency in color, body shape and muscle mass. Rarely does a calving ease sire group perform at these levels. Olympia 194D is one of the stoutest constructed cows on the ranch that has produced females selling to Walsh Farms and Wraz Red Angus and a son that was selected by Packet Brothers.



Sire - Typhoon 604H



202

Lot 202 RED SIX MILE OLYMPIA 349K

Reg No: 2274848 / Tattoo: SIXM 349K / DOB: March 03 2022

RED SSS TYCOON 225E

RED FINE LINE MULBERRY 26P

RED W SUNRISE TYPHOON 604H

RED SIX MILE OLYMPIA 194D

RED HOWE JOANNA 145C

RED SIX MILE OLYMPIA 39Z

Act BW 86

Adj WW 623

| | CED | BW | WW | YW | Milk | CEM |
|-----------------|------|------|----|-----|------|-----|
| Angus One EPD | 3 | 2.4 | 57 | 102 | 26 | 9 |
| Percentile Rank | | | 5 | 3 | 25 | 12 |
| BOLT EPDs | 10.8 | -0.1 | 77 | 117 | 25 | 6.4 |

Lot 203 RED SIX MILE MS PATHY 169K

Reg No: 2260209 / Tattoo: SIXM 169K / DOB: February 14 2022

PEAK DOT UNANIMOUS 586B

RED SIX MILE GAME FACE 164Y

RED SIX MILE STEALTH 269F

RED CC MISS PATHY 8E

RED SIX MILE MISS LARK 855A

CACTUS COULEE 18X

Act BW 82

Adj WW 545

| | CED | BW | WW | YW | Milk | CEM |
|-----------------|------|-----|----|----|------|-----|
| Angus One EPD | 5 | 1.6 | 40 | 67 | 22 | 6 |
| Percentile Rank | 31 | | | | | |
| BOLT EPDs | 10.8 | 0.4 | 59 | 91 | 19 | 5.9 |

203

- Pathy 169K sports the darkest shade of red with her big-time maternal design. The Stealth females have hit production here at Six Mile and are doing an admirable job. Dam of 169K entered the Six Mile herd from the Cactus Coulee herd acquisition she was easy to find with her capacious rib and body.



Sire - Stealth 269F



203



204

- Without question, Favourite 245K was the most photogenic animal to hit the picture pen this year. Her charismatic presence is generational as her dam and granddam donor both were head turners. Roush is a Red Box-Marta combination herdsire that stamps his progeny with consistent quality on both sexes. Get in on the ground floor with these Roush daughters; he may silently turn out to be the best Red Box son produced.



Dam – Ms Favorite 280F

Lot 204 RED SIX MILE GGA FAVORITE 245K

Reg No: 2277653 / Tattoo: SIXM 245K / DOB: February 19 2022

RED MANN RED BOX 55C
RED SIX MILE ROUSH 747G
 RED TOPLINE MARTA 807

RED U-2 RECKONING 149A
RED SIX MILE MS FAVORITE 280F
 RED SIX MILE FAVORITE 890S

Act BW 82 Adj WW 599

| | CED | BW | WW | YW | Milk | CEM |
|------------------|------|------|----|----|------|-----|
| Angus One EPD | 0 | 1.1 | 41 | 67 | 14 | 10 |
| Percentile Rank | | | | | | 7 |
| BOLT EPDs | 11.5 | -0.2 | 60 | 93 | 31 | 6.9 |

Lot 205 RED SIX MILE BRIDGET 58K

Reg No: 2259717 / Tattoo: SIXM 58K / DOB: February 02 2022

RED MANN RED BOX 55C
RED SIX MILE ROUSH 747G
 RED TOPLINE MARTA 807

RED SIX MILE EDDIE 500E
RED CC BRIDGET 3G
 RED WRIGHTS 26P BRIDGET 19E

Act BW 62 Adj WW 541

| | CED | BW | WW | YW | Milk | CEM |
|------------------|------|------|----|----|------|-----|
| Angus One EPD | 10 | -1.4 | 39 | 65 | 25 | 11 |
| Percentile Rank | 7 | 12 | | | 35 | 4 |
| BOLT EPDs | 15.2 | -2.7 | 55 | 85 | 27 | 8.5 |



205

- Striking and captivating, this feminine featured Roush daughter is really turning it on as of late. Wedge shaped and level topped, we think she will be a beautiful matron in her new herd displaying an ideal teat size and placement at this stage. Her youthful Eddie dam is awesome footed and displays a show-ring worthy udder.



Sire – Roush 747G

Lot 206 RED SIX MILE WIND CHIME 330K

Reg No: 2267230 / Tattoo: SIXM 330K / DOB: February 28 2022

RED SIX MILE JOHN WICK 882E

RED SIX MILE RUGER 221X

RED SIX MILE PARABELLUM 675G RED SIX MILE WIND CHIME 634B

RED SIX MILE KURUBA 712A

RED SIX MILE WIND CHIME 769W

Act BW 80 Adj WW 566

| | CED | BW | WW | YW | Milk | CEM |
|-----------------|------|------|----|----|------|-----|
| Angus One EPD | -2 | 2.8 | 51 | 82 | 18 | 13 |
| Percentile Rank | | | 14 | 21 | | 1 |
| BOLT EPDs | 12.6 | -0.6 | 57 | 90 | 30 | 8.5 |

- Parabellum has quick rose to stardom for his ability to consistently produce high quality offspring that are built different than a typical Red Angus. They are stouter pinned, bigger legged and darker red than the rest. They also tend to tie their neck higher at the top of their shoulder and he puts a unique and trendy ear set and skull on them. Wind Chime 330K is the natural calf from donor dam 634B that we own with Niobrara Red Angus. She is a tank of a cow!



206

Dam
Wind Chime 634B

Lot 207 RED SIX MILE MS DYNAMO 416K

Reg No: 2267595 / Tattoo: SIXM 416K / DOB: March 15 2022

RED SIX MILE JOHN WICK 882E

RED SIX MILE OUTSIDER 387C

RED SIX MILE PARABELLUM 675G RED SIX MILE MISS DYNAMO 860E

RED SIX MILE KURUBA 712A

RED SIX MILE MISS DYNAMO 172C

Act BW 83 Adj WW 536

| | CED | BW | WW | YW | Milk | CEM |
|-----------------|------|------|----|----|------|-----|
| Angus One EPD | 1 | 2.6 | 51 | 98 | 16 | 0 |
| Percentile Rank | | | 14 | 4 | | |
| BOLT EPDs | 10.5 | -0.1 | 58 | 95 | 23 | 6.2 |

- Lot 207 is a later born Parabellum heifer with all the extras and the pieces to potentially land herself in the donor pen. The Dynamos are powerful producers. Dam of 416K, Dynamo 860E has already put two high quality females back into the Six Mile herd and produced a son that sold to Horse Creek.



207

Maternal Sister
Miss Dynamo 395H

Lot 208 RED SIX MILE LASSIE 251K

Reg No: 2264091 / Tattoo: SIXM 251K / DOB: February 20 2022

PEAK DOT UNANIMOUS 586B

RED GLACIER CHATEAU 744

RED SIX MILE STEALTH 269F RED SIX MILE LASSIE 251F

RED SIX MILE MISS LARK 855A

RED SIX MILE LASSIE 377P

Act BW 70 Adj WW 533

| | CED | BW | WW | YW | Milk | CEM |
|-----------------|------|------|----|----|------|-----|
| Angus One EPD | 3 | 0 | 35 | 55 | 23 | 6 |
| Percentile Rank | | 29 | | | | |
| BOLT EPDs | 11.4 | -2.1 | 49 | 74 | 24 | 7.5 |

- I would challenge someone to find a more maternally designed pedigree than that of Lassie 251K. The Lassie cow family is potent, proven and profitable. We project this heifer's best days will be in production; she's youthful, balanced and proportional.



208

Maternal Granddam
Lassie 377P



Dam of Lot 209 – Fanny 149D



Dam of Lot 210 – Miola 910E

Lot 209 RED SIX MILE FANNY 100K

Reg No: 2266602 / Tattoo: SIXM 100K / DOB: February 07 2022

RED SSS TYCOON 225E

RED U-2 RECKONING 149A

RED W SUNRISE TYPHOON 604H

RED SIX MILE FANNY 149D

RED HOWE JOANNA 145C

RED SIX MILE FANNY 526X

Act BW 78

Adj WW 588

| | CED | BW | WW | YW | Milk | CEM |
|-----------------|------|------|----|-----|------|-----|
| Angus One EPD | 9 | -0.7 | 31 | 64 | 28 | 9 |
| Percentile Rank | 10 | 19 | | | 11 | 12 |
| BOLT EPDs | 11.7 | -1.1 | 66 | 100 | 28 | 6.9 |

- Fanny 100K needs to be seen in the flesh to be appreciated. She simply was too calm and mellow in the picture pen to crank out a show stopping snapshot. She is a direct daughter of Fanny 149D, a cow that collected her fair share of accolades in the showing and is now crushing it in production; her ET Tycoon bull is a sale feature as Lot 10.

Lot 211 SIX MILE POLLY 355K

Reg No: 2296181 / Tattoo: SIXM 355K / DOB: March 04 2022

BLACK WHEEL DRACARYS 178E

STEWART PANTHER 19X

RED WHEEL STARK 67G

CC POLLY 17Z

RED WHEEL ROSE 66C

RED CCY SAVANNAH 5U

Act BW 92

Adj WW 575

| | CED | BW | WW | YW | Milk | CEM |
|-----------------|-----|-----|----|----|------|-----|
| Angus One EPD | -4 | 3.5 | 54 | 91 | 21 | 3 |
| Percentile Rank | | | 8 | 9 | | |

- As we bring the Stark daughters into production in our herd, we are reaffirmed of the maternal strengths that he possesses. They display a consistent udder quality and ease of flesh. We think he will cement his legacy as one of the great female makers in the Red Angus breed. Polly 355K is a shaggy, easy keeper with a pedigree stacked with maternal legends.

Lot 210 RED SIX MILE MS MIOLA 260K

Reg No: 2279278 / Tattoo: SIXM 260K / DOB: February 20 2022

RED BLAIR'S NAVIGATOR 37E

RED CROWFOOT 4ACES 2193Z

RED MAR MAC LINCOLN 106H

RED SIX MILE MIOLA 910E

MAR MAC SIERA 12B

RED BAR-E-L MINOLA 243T

Act BW 84

Adj WW 571

| | CED | BW | WW | YW | Milk | CEM |
|-----------------|-----|-----|----|----|------|-----|
| Angus One EPD | 1 | 1.7 | 32 | 59 | 29 | 4 |
| Percentile Rank | | | | | 7 | |
| BOLT EPDs | 9.5 | 0.5 | 59 | 94 | 23 | 5.2 |

- A dark red Lincoln heifer backed by a stunning phenotype cow, Minola 910E. We love the shape, color and dimension that Lincoln injected into his first calf crop.

Lot 212 SIX MILE MS LAKOTA 407K

Reg No: 2275560 / Tattoo: SIXM 407K / DOB: March 13 2022

WB PENDLETON 708 PVF SWSN

RED SIX MILE GAME FACE 164Y

SIX MILE PENDLETON 631H

RED SIX MILE MS LAKOTA 614A

RED BAR-E-L BESSIE 259T

RED SIX MILE LAKOTA 173Y

Act BW 86

Adj WW 624

| | CED | BW | WW | YW | Milk | CEM |
|-----------------|-----|-----|----|-----|------|-----|
| Angus One EPD | 1 | 2.2 | 50 | 79 | 26 | 5 |
| Percentile Rank | | | 16 | 26 | 25 | |
| BOLT EPDs | 8.9 | 0.4 | 70 | 106 | 24 | 5 |

- A performance leader amongst her contemporaries, Lakota 407K is the first daughter of the out cross herd sire, Pendleton, we have offered. Phenotypically, she balances power and femininity with a solid foot design and near perfect teat size and placement.

Lot 213 SIX MILE LADY LEE 120K

Reg No: 2259785 / Tattoo: SIXM 120K / DOB: February 09 2022

SCHIEFELBEIN ATTRACTIVE 4565
SCHIEFELBEIN SHOWMAN 338
 FROSTY ELBA 3745

REMITALL F DIESEL 76D
SIX MILE LADY LEE 378H
 SIX MILE LADY LEE 466C

Act BW 66 Adj WW 616

| | CED | BW | WW | YW | Milk | CEM |
|-----------------|-----|-----|----|-----|------|-----|
| Angus One EPD | 8 | 0.2 | 68 | 131 | 29 | 7 |
| Percentile Rank | 15 | 15 | 8 | 4 | 8 | |

- A soft sided, deep flanked maternal masterpiece from an angular first calving Diesel daughter. We admire the body shape and flexibility of this heifer. She stems back to the Lady Lee cow family that is known for extra longevity and high maternal instincts in our herd.



— 213 —

Lot 214 SIX MILE GSF LADY 224K

Reg No: 2275488 / Tattoo: SIXM 224K / DOB: February 18 2022

REMITALL F BRIGADIER 86B
REMITALL F DIESEL 76D
 REMITALL F JET 74Y

MICH WHEATLAND CASH OUT 774E
SIX MILE LADY 269G
 SIX MILE BREED CRK TRAMP 155D

Act BW 86 Adj WW 659

| | CED | BW | WW | YW | Milk | CEM |
|-----------------|-----|-----|----|-----|------|-----|
| Angus One EPD | -1 | 3.8 | 69 | 121 | 22 | 2 |
| Percentile Rank | | | 7 | 7 | | |

- This Diesel daughter is the biggest statured and offers the most spine length of the females on offer. Her maternal sister was a feature bred heifer in the Angus Collection Sale this past December where she commanded \$14,000 selling to Beerwort Farms in Quebec. She is a member of the famed Lady cow line who continually outproduces themselves



— 214 —

Lot 215 SIX MILE GGA ROSE 43K

Reg No: 2284478 / Tattoo: SIXM 43K / DOB: January 30 2022

SCHIEFELBEIN ATTRACTIVE 4565
SCHIEFELBEIN SHOWMAN 338
 FROSTY ELBA 3745

REMITALL F DIESEL 76D
SIX MILE ROSE 482H
 SIX MILE IDA ROSE 375B

Act BW 68 Adj WW 653

| | CED | BW | WW | YW | Milk | CEM |
|-----------------|-----|-----|----|-----|------|-----|
| Angus One EPD | 8 | 0.4 | 70 | 137 | 27 | 9 |
| Percentile Rank | 15 | 17 | 6 | 2 | 16 | 20 |

- Rose 43K represents one of our favorite and most consistent mating combinations; Showman on a Diesel daughter. Her young dam has a huge future in our herd displaying a big pin set, solid foot design and a level, tidy udder with well above average milk production. She weaned this heifer off with an admirable 108 nursing ratio. On paper, her EPD profile is HUGE (insert Trump voice). Top 1% YW, Top 6% WW, Top 15% CE & BW



— 215 —

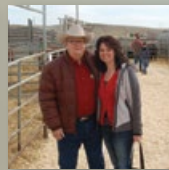
OPEN COMMERCIAL HEIFER CALVES sold in lots of 3 to 5. These Heifers are from the heart of our own commercial program and from our progressive customers. They will be both BLACK and RED Angus influenced females.

We are still accepting consignments from our customers if they are interested in offering open heifer calves. Contact Clayton or Corinne as soon as possible to join the list. In order to have the heifers videoed prior to the sale you need to consign by March 20th.



Six Mile & Guests
"Range Royalty"
COMMERCIAL BRED HEIFER SALE

Congratulations to the progressive commercial cattlemen for consigning their high quality commercial bred heifers to this successful event. Using Six Mile Genetics enables to you to consign your top end Angus and Angus cross females to this sale. Join Us December 2023 at Heartland Livestock, Swift Current.



In Honor and Memory of an
Incredible Cattleman & Friend
 - Leonard Lodoen

Leonard Lodoen was one the most influential customers and friends that we have ever had the honor to associate with. We are eternally grateful that Leonard chose Six Mile Genetics to found his Red Angus herd, alongside his highly respected Hereford program. I remember the first time he attended our Bull Sale with his young grandson, Ben. He came a day before the sale and we spent the whole day touring cows. After seeing numerous Indeed sired females, he told us outright that he was buying an Indeed son. He chose the Tidal Wave bull that sale and kept coming back, always picking our very best herd bull candidates. Leonard was a friend, a customer, but more importantly, a mentor to Clayton and I. He always took the time to share his wealth of knowledge with us and we became a better program because of it. Leonard was so proud of his family and their work ethic as they managed the farm and cowherd he loved. There will never be another cattleman like Leonard Lodoen. However, his legacy will be with us forever, as his family carries on the L83 Brand of superior genetics. Rest in peace Cowboy - you will be deeply missed here at Six Mile.



Spring Fling 6M

June 2nd to 4th
At the Ranch- Fir Mountain, SK

An opportunity to learn about a variety of topics ranging from feeding, hair care, showmanship, animal anatomy, show day preparations, marketing and so much more!

Join our Six Mile Team for a fun weekend of learning and fellowship!

Open for FREE to any Six Mile Customers.

All participants will be entered to win an exciting prize - a BEAST BLOWER!

For more information and registration information please email:
callie.sixmile@gmail.com

Registrations close May 10, 2023



Thank You to the buyers and bidders at our 2022 Sale



VOLUME BUYER
Thank You, M Bar Ranch
The Good Family, AB



VOLUME BUYER
Thank You, Horse Creek Ranch
The Eklund Family, SK



Red Six Mile Montgomery 656J
HIGH SELLING RED BULL

Thank You
Walsh Farms, ONT



Six Mile TJB Guthrie 353J
HIGH SELLING BLACK BULL

Thank You
Dragon View Angus, B.C.

GEARING UP FOR OUR

50th Sale

We are planning Some Big Things to **Celebrate our 50th bull sale in 2025** with exciting giveaways and surprises for our loyal customers.

One thing already underway is allowing our volume buyer to "CREATE A CREDIT" where they will be credited \$100 for every bull they buy in 2022, 2023 and 2024 to use in our 50th Anniversary Sale.

Watch for other events and surprises as we celebrate this milestone.

WRANGLER | IMP 9096G | CAA #2166088

Wrangler came to us from Ross Knott in Nebraska. Wrangler was used heavily on heifers as he moderated birth. Daughters are now in production and Wrangler is showing his worth as a maternal bull.



NORTHBOUND | IMP 344F | CAA #2104666

Northbound was selected from the Sonstegard family in Minnesota. His outcross pedigree and added stature have blended perfectly in our herd. Northbound daughters all exhibit tight and tidy udders and we believe his true worth could be in the maternal qualities he brings to a herd.



STEALTH | SIXM 269F | CAA #2048206

Stealth injects the outcross pedigree from the highly respected Vision Unanimous into the red gene pool. Stealth progeny exhibit a dark red color, alert and eye-appealing presence, added foot quality and high maternal strengths. Stealth daughters have level udders with excellent teat size and placement.



GENTRY | SIXM 342G | CAA #2099330

Gentry was our high selling bull to Cactus Coulee in 2020. He is a consistent calving ease option who throws a dark red color and added foot quality. Gentry sired bulls will add maternal strength to your herd with the beautiful, Lassie 417X, female as his dam.



ROLEX | DWBN 15F | CAA #2052004

Rolex is the dark cherry Assassin son that stems back to a gorgeous uddered Signature daughter at Rainbow Red Angus. He has proven himself to produce offspring with superior calving ease, dark red color, moderate frame size and daughters who are able to raise big calves come weaning.



DIESEL | GR 76D | CAA #1909643

Diesel is the tried-and-true option in our black bull offering. His foot quality is unparalleled and he blends that with a very impressive EPD profile. Daughters have consistently sound udders.



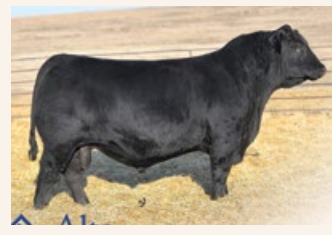
HONOUR | YDF 16H | CAA #2184341

Honour was selected from Youngdale Farms in 2021. He is a calving ease option who adds tons of hair to his progeny. Both sons and daughters are easy to identify as they have a proud presence about them.




THREE RIVERS | IMP 8062F | CAA #2219702

We implemented Ellingson Three Rivers as an AI sire to add some size and substance to our Black Angus bull pen. He sure delivered in those areas. The Three Rivers sons are powerful, stout, rugged bulls who will add pounds at both weaning and yearling time!



U.S. Exchange

U.S. Exchange  U.S. funds will be accepted at the current rate of exchange sale day and will be posted prior to the sale. The U.S. dollar is currently at a big premium in Canada giving our U.S. customers added buying power and value.

Calving Ease Guide

Every year the most frequent question we receive is which bull will work on heifers. Well.....only you know your heifers and must consider breed composition and hybrid vigor - but we try our very best to evaluate each bull to assist you. We developed the following guideline for calving ease by evaluating many traits in making our recommendations:

- actual birth weight
- birth weight EPD
- Calving Ease and Maternal Calving Ease
- Dam's past birth weight and calving records on progeny
- Sire's birth weight and calving tendencies
- Bulls physical attributes.

This Calving Ease Guide is our most accurate prediction based on the above mentioned criteria.

Calving Ease 1 Cow Bull - Recommended for mature females only. Not recommended for heifers.

Calving Ease 2 Recommended for use on larger, well grown heifers only, expect to assist some normal births from first calf heifers.

Calving Ease 3 Recommended for heifers, easy calving with minimal assistance on normal births

Calving Ease 4 Highly recommended for heifers, expect little to no assistance on normal births

A Note about EPDs

CAA Average Black EPDs for all calves born in 2022

CAA Average Red EPDs for all calves born in 2022

| BW | WW | YW | Milk | CED | CEM |
|-----|----|----|------|-----|-----|
| 2 | 52 | 92 | 23 | 3.5 | 6.7 |
| 1.1 | 40 | 68 | 24 | 2.7 | 5.3 |

ARAA BOLT Average EPDs for all calves born in 2022

| CED | BW | WW | YW | CEM | Milk |
|------|------|----|----|-----|------|
| 11.4 | -0.9 | 56 | 88 | 6.4 | 24 |

The EPD's you find in this catalog are the product of Canadian AngusONE Genetic Evaluation. These EPD's are calculated in partnership with the American Black Angus Association. The aim of this brand new system is to eventually make ALL ANGUS in Canada- red and black- comparable with each other, as well as U.S. Black Angus cattle.

We also listed BOLT EPD's on all Red Angus bulls. These EPD's are generated by the Red Angus Association of America. AngusONE and BOLT EPD's can not be compared to each other.

A Note about Weaning and Adjusted Weights

BW-Actual Birth Weight, WW-Weaning Weight adjusted to 205 days, YW- Yearling Weights adjusted to 365 days

VOLUME DISCOUNTS

We are able to fill your needs whether you need one or a trailer load of bulls this year. We are pleased to offer the following discounts to those needing multiple bulls:

- 3 - 4 bulls 3% discount
- 5- 9 bulls 5% discount
- 10 or more bulls 10% discount

This discount will only apply to bulls that are paid for in full on sale day. Absentee buyers will have a 14 day extension for their discounts. Partnership bulls will not apply.

BREEDING SEASON WARRANTY PROGRAM

Our warranty program is now in its fifth year and was developed to help you protect your investment at a reasonable rate. Under our warranty your bull is covered for injury, sickness, accident, disease fertility, structural breakdown or death. Should such a problem arise- we will service your needs with a replacement bull or credit to next year's sale. We keep high quality bulls out of the sale for this reason, to ensure we can assist you our customer. We offer the following options to be paid the day of the sale. Maximum Value is \$15,000 or less.

OPTIONS:

Option 1- 3 Month Duration at 3% - we strongly suggest for bulls not going home on sale day

Option 2- 6 Month Duration at 6%

Callie Hertz will be available to discuss these options the day of the sale. If a problem is to arise please contact Callie immediately at 306-640-9275 or callie.sixmile@gmail.com. We will require a veterinarian complete a report.

EXCLUSION TO WARRANTY:

Six Mile will not warranty any injury or death due to malicious, willful or intentional acts of mistreatment.

Larry Toner with Stockman's Insurance will be available for all other Insurance Needs

BIDDING: Each animal will be sold to the highest bidder whenever there are two or more bids. The auctioneer will settle any disputes. **TERMS:** The terms of the sale are cash. The right of property shall not pass until after the settlement is made. All settlements will be made with the clerks of the sale immediately following the conclusion of the sale and before any cattle will be released from the ranch. Financing terms are available if prior arrangements are made with Clayton and Corrine. **PURCHASER'S RISK:** Each animal becomes the risk of the purchaser as soon as sold. Cattle will be kept free of charge until May 1, 2023, when they are to be picked up or delivered. We strongly urge the buyer to insure any bulls left, as they are yours when the hammer falls. **INSURANCE:** A Live-stock Insurance Agent will be present to care for the insuring of cattle. **CERTIFICATE OF REGISTRY:** A certificate of registry and transfer will be furnished on all cattle sold as registered animals. **ANNOUNCEMENT:** Changes of information contained in this catalogue relating to the animals offered for sale will be announced from the auction box and such announcements shall take precedence over the printed matter in this catalogue. **BREEDERS GUARANTEE:** Six Mile Red Angus guarantees to sell you a bull that has passed a semen test and breeding soundness evaluation completed by a qualified, licensed veterinarian. However, should a problem arise, please let us know so arrangements can be made without delay. Should your bull fail to be a satisfactory breeder - as agreed upon by buyer and seller - he will be replaced with a bull of equal value. Should this not be possible, an adjustment will be made to reflect the value of the bull in question, or a credit given towards the purchase of another bull. Six Mile keeps bulls out of the sale for this sole purpose. Yearling bulls shall be guaranteed breeders for no more than 20 females. AGAIN, each bull as passed a semen evaluation, however, it is the buyer's responsibility to make sure that your new bull can physically service a female and is able to settle them. In the rare case he is not working, please let us know ASAP and we will be happy to rectify the matter. We will however, not provide replacement or adjustment for physical injury or mismanagement. Bearing this in mind, we stress the important of insurance on your bull. At no time shall the seller's liability exceed the purchase price of the bull. In the event of any unlikely dispute the standard terms and conditions of the Canadian Angus Association will apply. **IDENTIFICATION:** Each purebred animal carries a readable tattoo. **LIABILITY:** Although every precaution will be taken to protect the safety and comfort of the buyer, neither owners, sale manager, clerks or anyone connected with the sales assumes any responsibility, legal or otherwise, for damage of any kind. **HEALTH STATUS:** All Six Mile bulls have been vaccinated with Express 5 vaccine which includes IBR, PI-3, BVD - type 1 and 2 and BRSV. They have also been vaccinated with a somnugen and black leg vaccine. Each bull has been treated with Ivomec. **US FUNDS & EXPORT:** American money will be accepted at the most current rate of exchange on sale day and announced prior to the sale. Bulls will be export tested at Six Mile's expense and delivered as soon as possible following the sale. **RIGHT TO DRAW SEMEN:** Six Mile reserves the right to in herd semen use on any bull sold in the sale. Semen Collection will be at our expense and buyer's convenience, with a minimum of 100 units collected. **DNA TESTING:** Any bull sold needing DNA testing will be done by Six Mile provided the bull remains at Six Mile after the sale. Please inform the sales clerk at time of settlement. **SIGHT UNSEEN PURCHASES AND GUARANTEE:** If you are unable to attend our sale, but are interested in our bulls - We can take an order on any of the bulls in the sale. Our sales consultants can also help you make selections. Give Clayton or Corinne a call to ensure the bulls you (or our sale consultants) have selected are ones we feel will work for you. If you have discussed your selections with Clayton or Corinne prior to the sale, your satisfaction is 100% guaranteed. When the bull is delivered to you, you are under no obligation to take him should he not meet your needs.

DELIVERY OF BULLS:

We will continue to offer FREE DELIVERY for the first 500 miles. This is for all purchases paid for in full within 14 days of the sale date. (Unless other arrangements are made) We may not be able to deliver directly to your ranch location, but rather to a central location close to you, where you will meet us and pick up your bull. We will give you as much notice as we can prior to delivery. Beyond 500 miles, we will still coordinate delivery and will add the charge to each invoice.

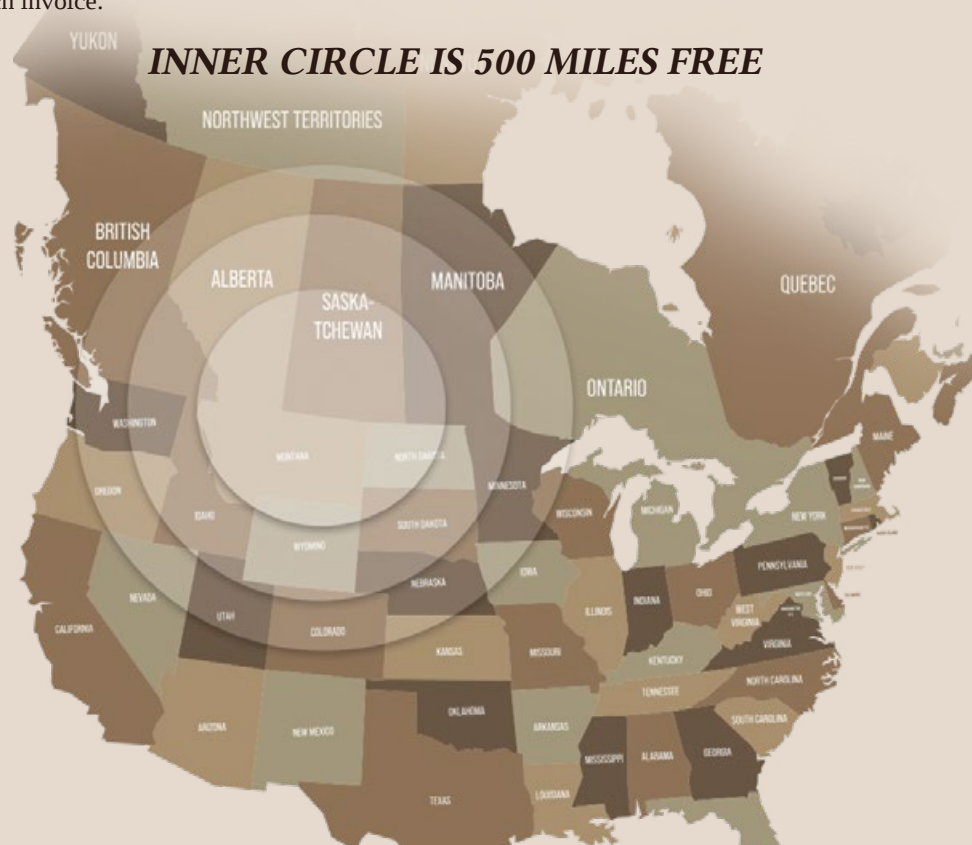
Cost of Delivery Beyond 500 Miles

0-500 miles Free Delivery
 500 – 700 miles \$350 per customer (Up to 3 bulls)
 700 – 900 miles \$550 per customer (Up to 3 bulls)
 Over 900 miles – we will work with you to coordinate the remaining distance which will be your financial responsibility

If you are not ready to receive your bull when we arrange delivery to your area, we can keep your bull FREE OF CHARGE until May 1st. Following May 1st, we will charge \$3.50 per day per Bull until you are able to pick up. Please notify us if this is an option you need.

For all International Purchases (U.S. and Mexico) We will do all of the health and export testing required for a charge of \$125 per head which will be added to your invoice at time of sale. Delivery will be the same as any other, with the first 500 miles free and the balance being added to your invoice.

\$100 Rebate per bull will be offered if you pick up your bull at the ranch within one week of the sale and your purchase is paid for in full at that time.



SIX MILE RANCH
Box 8, Fir Mountain, Sask. S0H 1P0



LOT 2



LOT 25



LOT 28



LOT 122



LOT 204



*Where Customers
Become Friends*



HOW TO
FIND US

DIRECTIONS

At the intersection of Highway #18 and Range Road 3050 (the Iconic Six Mile Red Bull Sign): Proceed 2 miles south to Township Road 5-0 (Six Mile Ranch Road). Head East into Six Mile Ranch. Or Google "Six Mile Ranch": the pin will lead you directly to us!