

2022 EDITION

MADER
Ranches

Ladies
NIGHT

BRED FEMALE SALE



10.20.2022

On The Ranch - Carstairs, AB

5 PM

WELCOME 2022 EDITION

Welcome to our 2022 Edition of Mader Ranches Ladies Night! As I sit down to write this, most of the cereal harvest has been completed across prairie provinces, with yields and prices holding solid and the weather allowing people to get straw baled up, cattle shuffled onto fall pasture, calves sold, and get caught up on the "To Do Lists!" The optimism in the cattle market is very rewarding seeing high prices on cull cows and bulls, a very strong yearling market, and calf prices that are still climbing! Although a drier end to our summer, the feed inventory sounds like it has been replenished in many areas, and it is rewarding to see farmers and ranchers getting compensated for their efforts and hard work!

We have selected 25 of our very best bred females for this sale, offering a broad range of genetic combinations and matings, while still trying to focus our program being built around dominant and lucrative cow families. With breeding over 90 heifers this spring, this is what allows us to offer such an elite group, as we had a great selection to retain and sell from. The embryo matings we are offering are amongst our most exciting breeding pieces we have ever offered, and matings that we have confidently implanted ourselves already, and ones we feel will be very profitable to the respected buyers. The use of AI and embryo work throughout our program has allowed us to build a cowherd based around top donors that excel in production, foot and udder quality, and easy fleshing ability. We incorporate sires that have proven themselves within the industry, but are also not afraid to try something new that has the genetic potential and proven history in their blood!

An October sale works so well for our program, and we believe it is beneficial for our customer when it comes to trucking of these live cattle well in advance to calving, it allows most of the growth of these females to be done on green grass forage, it gives a more realistic picture of what these heifers are in their working clothes and to what they are going to mature into, and is more beneficial for their longevity in the long run. We do not pamper or cowherd, and these females are expected to lay down and give you a live calf, will thrive off of green grass and stubble, and are genetically bred to be easy fleshing and problem free cattle even within the harshest of winters we can see if this country. These females are included in our total herd health program receiving the appropriate vaccines such as Bovashield Gold, 8 way, and Ivomec. They have all been vaccinated 2 times with the following, and our fall vaccinations on bred females will not happen until early November, so you are able to get them home shortly after the sale and get them onto your own protocols. All have been ultrasounded and the most accurate breeding dates we can offer, are noted within their individual lots.

As you analyze the offering, you will see we didn't hold anything back! From opportunities such as our prestigious Lot 1 female, opening up the chance to be a part of a true donor in the making, right through what we feel are bred heifers that will "add" to your program, not just multiply your numbers, right into a selection of embryo matings that combine some of the most sought after genetics in the breed today! Take note of the matings to the \$280,000 Mader Walk The Line sire crossed with some unreal up and coming donors cows, or flip and few pages and note the unique opportunity we are offering on the IRCC Darlin cow, who has already generated over \$500,000 in progeny over a short few years. Or have a look at the choice of sire, embryo lot, on the \$92,000 Mader Violet 49H female, this is one that is sure to get the goosebumps started!

We hope we can host you, at the ranch, Thursday, October 20th! Cattle are available for viewing anytime that day or the day before, the sale will start at 5pm with a steak supper to follow. We also ask that if you are able to attend the sale, that you plan to stick around afterwards for refreshments and live music, to help us celebrate a few special anniversaries this year, Randy and Ronda at 45 years, and Ryley and Jill at 15 years! If we cannot make the sale, please feel free to tour the farm ahead of time, make arrangements to bid online, or please contact anyone of us from Mader Ranches or our trusted sale staff to assist you with questions or bidding. This night we celebrate the Ladies of our operation, please make sure to bring the ladies of yours!

Ryley

THE PEOPLE OF MADER RANCHES



RYLEY & JILL

STELLA & HAWKIN MADER

maderranches@gmail.com

Ryley's Cell: 403.807.8140

Jill's Cell: 403.990.9187

Ryley has been a part of the family operation from a young child and was joined by Jill in 2007. Everyone is hands on in the business activities and look forward to many years in the cattle industry.

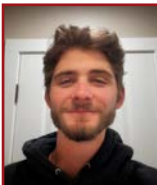


RANDY & RONDA MADER

rrmader13@gmail.com

Randy's Cell: 403.660.1123

Randy & Ronda started Mader Ranches in 1974. They have worked hard in the cattle industry for 45 years and see all aspects of the operation from day-to-day, management & mentorship.



MITCH DAUNCEY

Mitch joined the team this summer. He will manage the feed wagon, mechanics, and assists with daily cattle tasks and that will make him a huge asset to our operation.

SALE DAY INFORMATION

SCHEDULE

October 19th Viewing All Day
October 20th Viewing All Day
5 PM : SALE TIME

Followed by Steak Supper & Live Music

SALE STAFF

Auctioneer: Ryan Dorran 403.507.6483
Ringmen: Mark Stock 403.357.8104
Rod Mcleod 403.540.7986

SALE MANAGEMENT

Bohrson Marketing Services Ltd.

Scott Bohrson 403.370.3010
Taylor Richards 306.821.4169
Jay Sibbald 403.899.2625
Jaxon Payne 306.830.0456
Cody Haney 403.845.8806

www.bohrson.com

SALE CONSULTANT

First Class Marketing

Darnell Fornwald 403.795.8030
Shay Martindale 780.812.4581

ACCOMODATIONS

Ramada - Olds 403.507.8349
Best Western Inn - Olds 403.556.5900
Didsbury Country Inn - Didsbury 403.335.8088
Golden West Motor Inn - Carstairs 403.337.3333

INCENTIVES

- **Payment due 1/2 down Sale Day & 1/2 Due Dec 31st.**
To allow customers to sell their own products before full payment is due.

- **5 % Junior Discount - 21 years of age or under**

WATCH, BID & BUY ONLINE

Internet Bidding Available

DLMS
www.dlms.ca

For more information call DLMS:
Mark Shologan 780.699.5082 or
DLMS Purebred Team 780.991.3025

ON OFFER

25.5 Red & Black Simmental Bred Females
15 Embryos

SUPPLEMENTARY INFO

A supplementary sheet will be available on sale day.
This will include any updated information.

PHOTOS & VIDEOS

- Taken in house by Mader Ranches
- Can be viewed online at www.maderranches.com
- Pictures taken Sept 2022 & videos taken Oct 2022

TERMS & CONDITIONS

Cattle will sell under the standard terms and conditions put forward from the Canadian Simmental Association and from Mader Ranches. These are available upon request.

DISCLAIMER

While every effort has been taken to ensure that all details are correct, the descriptions contained in this catalogue are often opinion only. We cannot be responsible for the consequences of any actions taken or not taken as a result of these opinions.

HOW TO FIND US?

Directions From Carstairs:

Go North on Main Street (10th Ave) out of town, Road automatically turns west(Twp Rd 303).
Go West 15 kms to Range Road 32.
Turn South. Farm is on your right.

Directions From Hwy 22:

Go East 11 kms on Twp Rd 303 (Carstairs Blind Line) to Range Road 32.

Turn South. Farm is on your right.

FIND US ON GOOGLE MAPS - Mader Ranches



THE MADER RANCHES DIFFERENCE



HAND PICKED HERD

Our Genetics are carefully chosen by us and some trusted advisors, and we make all the mating decisions ourselves. We travel around to source only the best animals or frozen genetics, increasingly realizing the value in raising your own breed leaders.



POLLED GENETICS

Horns are extra work, welfare and safety issues for cattle and cattlemen. Mader Ranches prides itself on its polled genetics since 1974.



FAMILY OPERATION WITH LONG TIME COMMITMENT

The Mader Family has been in the cattle business for 48 years. We have had 33 bull sales and plan on an extensive future with our 2nd and 3rd generation. We work hard to ensure our customers are happy with their investment. We are committed to helping our customers achieve their goals and back our animals.



HEART OF OUR HERD

We have a large nucleus of foundation females and pride ourselves in the cow families that extend down from that base. These females on offer are picked from 150 replacement heifers. They are the best of the best.



DEPTH OF PEDIGREE

We utilize Embryo Transfer and AI extensively to multiply the consistency in our herd. We find that by reproducing multiple daughters and sons from our donor cows and breed leading sires, we can offer consistency to our customers.



ACCURATE DATA

We have invested into cattle record keeping and management so that all of our data is as accurate as possible. We have our herd on the HerdTrax program as it integrates well with the Total Herd Enrollment with the Canadian Simmental Association. All data is available.



MADER RANCHES SERVICE SIRES



MADER SON OF ANARCHY 144H

Son of Anarchy
 REMINGTON LOCK N LOAD 54U
 6 February 2020 • BPTG1318606
Homo Polled, Homo Black

SIRE: TJSC BOONE PICKENS 46C
 TJSC KNOCKOUT 121Y
 LFE THE DARK NIGHT 350U
 DAM: LFE BS SHEILA 82A
 LFE BS SHEILA 136T

EPDs						
CE	BW	WW	YW	Milk	MCE	MWW
8.0	3.7	91.9	140.6	16.9	2.3	62.9
% RK	40	50	4	3	100	75 70

A \$50,000 high seller in our 2020 Bull Sale, going to Harvie Crest and Mader Ranches will walk him in our summer program



MADER WALK THIS WAY 224B

Walk This Way
 LFE VIPER 455U
 27 July 2014 • BPTG1139930
Homo Polled

SIRE: NCB COBRA 47Y
 NCB MISS DREAM 22T
 MADER P BLACK IRONMAN 22U
 DAM: MADER P IRON SUGAR 7X
 LFE FAMOUS 632T

EPDs						
CE	BW	WW	YW	Milk	MCE	MWW
11.3	0.6	93.9	144.4	31.8	9.1	78.8
% RK	15	10	3	2	30	4 5

Born and raised at Mader Ranches and a high seller in 2016 to Sunny Valley Simmentals, Walk This Way has gone onto do great things for the Simmental breed and at Mader Ranches.



CMS LOGIC 010H

CDI RIMROCK 325Z
 SIRE: STF CRIMSON TIDE DZ87
 STF MISS ZW87
 CMS RAPID FIRE 635D
 DAM: CMS LUBA 808F
 CMS JEWEL 961W

Logic
 11 January 2020 • PG131139
Homo Polled

EPDs						
CE	BW	WW	YW	Milk	MCE	
9.2	2.2	75.2	102.2	23.0	5.5	60.6
% RK	30	25	55	75	80	30 80

We purchased Logic from Czech-Mate Livestock for \$16,000. He has been used in the heifer pen for 2 years now and we are really happy with the calves! Dark red calves, mostly blazes and they come nice and easy for heifers.



MADER INFINITE 17J

NCB COBRA 47Y
 SIRE: MADER WALK THIS WAY 224B
 MADER P IRON SUGAR 7X
 MADER THE NATIONAL 43E
 DAM: MADER BLACKGOLD 34G
 MADER BLACKGOLD 139A

Infinite
 2 January 2021 • PG1357903
Homo Polled

EPDs						
CE	BW	WW	YW	Milk	MCE	MWW
10.1	3.0	94.0	145.7	26.4	7.5	73.4
% RK	25	40	3	2	55	10 20

We were excited to add a Red Walk This Way son into the heifer pen this year. Walk This Way crossed with The National is a combination that should work really well on heifers with calving ease and good performance numbers as well!



WLB TOP TIER 456G

TNT BOOTLEGGERS Z268
 SIRE: MAR MAC UTAH WHISKY 52E
 MAR MAC UTAH'S DREAM 79U
 SUNNY VALLEY FORCE 47Y
 DAM: WLB 47Y FAE 343E
 WLB 756T TRESSIE 3556B

Top Tier
 21 February 2019 • PG1288193
Homo Polled

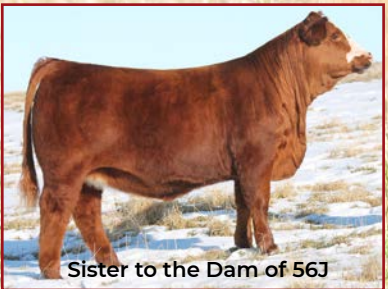
EPDs						
CE	BW	WW	YW	Milk	MCE	MWW
15.0	0.6	69.2	96.0	25.3	7.4	59.9
% RK	2	10	80	90	65	10 85

We bred only a couple this way, but the calves we have seen from Top Tier so far are ones that are at the top end of pens! That nice blaze with strong calving ease numbers! It should be marketable for you!

MADER *Cherry* 56J



SIRE - SVS Betts



Sister to the Dam of 56J



Cherry

10 January 2021 • MDR 56J • PG1356613 • BW 81

Homo Polled

EPDs						
CE	BW	WW	YW	Milk	MC	MWW
8.3	3.3	73.7	113.1	22.0	7.8	58.9

BGS/BM CAPTAIN SCREAM 63D
 SIRE: SVS BETTS 808F
 WFL RED SAGE 506C

MRL GAME CHANGER 12A
 DAM: MADER SCANDALOUS 71C
 MADER UNBROKEN 41Y

SELLING 1/2 INTEREST AND NO POSSESSION

Successful buyer will have no expenses with the exception of flushing, where embryos and expenses will be split 50/50 to the new buyer and Mader Ranches. For natural calves, the buyer will receive no expenses and receive 1/2 of sale net.



Lot /



being selected at Reserve Overall Champion Female at YCS



Reserve Champion Chinook Show



Reserve Champion Female - YCS

AI Bred on April 28 to WLB Top Tier 456G. Safe to AI Due February 7th.

- Here is a phenotypical masterpiece stemming from the leading SVS Betts sire, and out of a superior young cow that checks all the boxes
- From her dark cherry red colour, to her ideal teat placement and udder attachment, her extended front end and sound foot, we feel this young female is donor quality
- Her dam is a great cow to analyze from ground up with a great skeletal structure, great feet and legs, that easy fleshing bodytype, and that tremendous udder caliber
- This female stood at the backdrop numerous times for our daughter this spring and summer, one of her big highlights being declared Reserve Champion Female at the Alberta Simmental show
- Serviced to WLB Top Tier will lead to an exciting calf, and then we can set her up as a donor female for our new partners and us

Jewel Embryos




Ag+ Lot *2A & B*

CITY VIEW *Miss Jewel* 66J



Miss Jewel



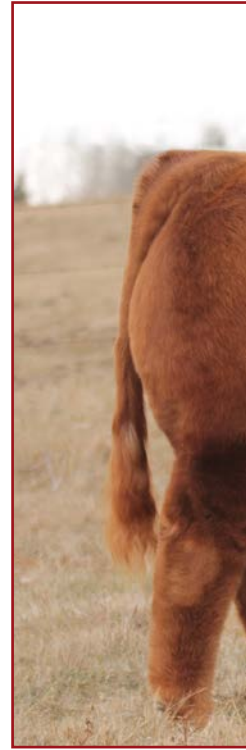
Sunny Valley Payton



Miss Jewel



SVS Betts 808F



SELLING TWO PACKAGES OF 3 EMBRYOS

17 January 2021 • MDR 66J • PTC1353998 • BW 80

Homo Polled

EPDs

CE	BW	WW	YW	Milk	MC	MWW
7.8	3.4	80.9	125.9	20.3	5.8	60.8

MADER WALK THIS WAY 224B
 SIRE: MADER WALK THE LINE 92J
 IRCC DARLIN' 613D

SVS BETTS 808F
 DAM: CITYVIEW MISS JEWEL 66J
 SUNNY VALLEY PAYTON 77E

- A feature donor we purchased out of last years Friday Night Light sale where she demanded \$25,000
- An extremely proven track record in terms of her genotype, allow us to believe this female will be a longtime matron in the herd
- Our son and niece had great success showing her this spring and summer, where she was crowned 4 championship titles
- You wont find many females with the remarkable rib shape, width of base, and power she carries, all while maintaining a sleek front end and unreal udder coming down
- The mating to the \$280,000 Mader Walk the Line, will result in some dam good offspring

Cream Soda Embryos



Lot 3

WF Cream Soda 64J



Cream Soda



Walk The Line



Full Sister to Cream Soda

Walk The Line

SELLING 3 EMBRYOS

16 January 2021 • WF 64J • PTG1354572 • BW 90

EPDs

CE	BW	WW	YW	Milk	MC	MWW
9.8	2.8	94.6	151.4	24.3	7.7	71.6

SIRE: MADER WALK THE LINE 92J
IRCC DARLIN' 613D

Homo Polled
RF PATRIOT 762E
DAM: WF CREAM SODA 64J
RF CREAM SODA 520C

-Analyze the resulting pedigree of this mating and you will find donors such as Certainly Flirtin 202Z, Sunny Valley Jenna 88U, HPF Cream Soda, Mader Ironsugar 7X, and IRCC Darlin 613D, along with sire such as WFL Westcott, SVS Captain Morgan, JF Milestone, Mader Walk This Way, and HOC Broker
-You can search long and hard to find so many legends in a pedigree, but we feel this combination will be extremely profitable for the new owner
-WF Cream Soda offers so much to the breed, with her dark colour, her bold rib shape, and her outstanding phenotype
-Be one of the first to have a calf born out of this \$25,000 Friday Night Lights feature donor female

Sugar Cow Family



Lot *H*

MADER *Sugar* 70J



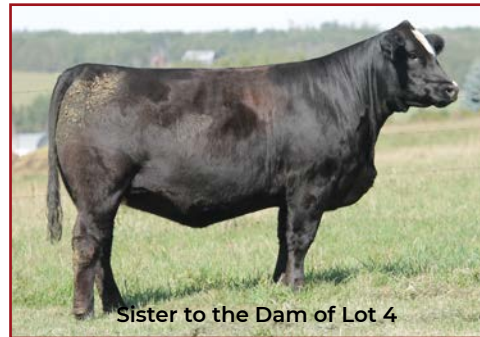
Dam of Lot 4



Granddam of Lot 4



Service Sire



Sister to the Dam of Lot 4

AI Bred on April 11th to Mader Son of Anarchy 144H. Preg Tested Safe to the AI - Due January 21st

12 January 2021 • MDR 70J • BPTG1356620 • BW 83

Homo Polled

EPDs						
CE	BW	WW	YW	Milk	MC	MWW
9.5	2.0	93.0	140.4	28.1	4.3	74.6

SIRE: WS PROCLAMATION E202
CCR COWBOY CUT 5048Z
WS MISS SUGAR C4

DAM: MADER SUGAR 408E
WFL TROJAN 63C
MADER LIPS LIKE SUGAR 27C

-Our feature "Iron Sugar 7X" relation this year is an exciting one
 -Her dam was the lead off female in our first edition of Ladies night selling to Double Bar D for \$18,500, and her sire is the well known calving ease Proclamation bull who is off the charts for an EPD profile
 -This girl is so attractive through her neck and skull, carries loads off body mass and volume, is super sound as she travels, and is setting up a great udder
 -Add some "Sugar" to your herd, and watch this young female do nothing but make you money



Lot 5



MADER Iron Honey 24J

04 January 2021 • MDR 24J • BPG1356599 • BW 80

Homo Polled

EPDs					
CE	BW	WW	YW	Milk	MC MWW
9.4	2.4	96.7	150.3	25.8	7.9 74.2

SIRE: MADER WALK THIS WAY 224B
MADER P IRON SUGAR 7X

DAM: MADER IRON HONEY 37D
MADER P IRON HONEY 31X

AI Bred on March 31st to Mader Son of Anarchy 144H. Exposed to CMS Logic 010H April 4th - June 7. Preg Tested Safe to AI breeding Due January 10th
 -This is a personal favorite of mine to analyze with her powerful hip structure, blending into a very balanced bodytype and skull
 -These Walk this Way females have great teat size and udder suspensions coming down, and this girl is doubled up with maternal strength from the Iron Sugar cow family
 -Bred early to the calving ease Son of Anarchy should result in a nice baldie calf that will do nothing but get up and grow
 -The Son of Anarchy bulls off of first calvers recently weaned off the cows at an average of 804 lbs



Lot 6



MADER Sugar 61J

11 January 2021 • MDR 61J • BPG1356615 • BW 85

Homo Polled

EPDs					
CE	BW	WW	YW	Milk	MC MWW
8.2	2.7	91.0	145.1	19.4	6.6 64.9

SIRE: MADER THE NATIONAL 43E
LFE BS VIOLET 641A

DAM: MADER SUGAR 515F
MADER SUGAR CRUSH 213B

Exposed to Mader Infinite 17J April 25th - May 23rd. Exposed to CMS Logic 010H May 24 - June 7. Preg Tested Safe to Infinite 17J - Due March 5th
 -You wont find a female with much more body capacity and spring and depth of rib
 -She is so easy fleshing, has a great big foot underneath her, is broody made, and will make a power cow
 -The National daughters in production are coming to the top easily, with their extra softness through that middle, perfect udders, and ability to wean off BIG calves
 -Doubled up with the great NCB Cobra bull in her lineage, and mated to a very powerful Walk This Way son we featured in our recent bull sale, will lead to a calf with genetic excellence

Lot 7



Sister of Lot 7



Sire of Lot 7 & 8

MADER Sugar 26J

4 January 2021 • MDR 26J • BPG1356600 • BW 80

Homo Polled

EPDs						
CE	BW	WW	YW	Milk	MC	MWW
7.4	3.4	80.6	115.6	23.5	4.3	63.8

RF CAPACITY 742E

WHEATLAND HIGH OCTANE169Y

SIRE: SVS DYNASTY 915G

DAM: MADER SUGAR HIGH 26C

WFL RED SAGE 506C

MADER P IRON SUGAR 7X

AI Bred on April 11th to Mader Son of Anarchy 144H. Exposed to Mader Infinite 17J April 25th - May 23rd. Preg Tested Safe to AI breeding- Due January 21st.

-Lot 7 and 8 are full sisters by blood and we really do go back and fourth to which one we like better

-This girl is so attractive through her front third, is bold ribbed, has beautiful udder coming down like her dam, and is very athletic when put in motion

-Last years maternal sister to this female was a feature and sold to Czechmate Livestock for \$9500

-The Ironsugar daughters are within our top black producing cows in the herd, and we expect this girl will work her buns off for her new owner

Lot 8



Dam of Lot 8



Sister of Lot 8

MADER Sugar 55J

10 January 2021 • MDR 55J • BPG1356612 • BW 83

Homo Polled

EPDs						
CE	BW	WW	YW	Milk	MC	MWW
7.4	3.8	80.2	116.0	25.9	4.8	66.0

RF CAPACITY 742E

WHEATLAND HIGH OCTANE169Y

SIRE: SVS DYNASTY 915G

DAM: MADER SUGAR CANE 48C

WFL RED SAGE 506C

MADER P IRON SUGAR 7X

AI Bred on April 25th to Mader Son of Anarchy 144H. Exposed to Mader Infinite 17J April 30th - May 23rd. Preg Tested Safe to AI breeding- Due Febraury 4th

-The dam to this girls has been successfully flushed with progeny working in our herd, southern Canada, and Australia

-You really have to appreciate the nice head, the balanced design, and completeness this heifer offers

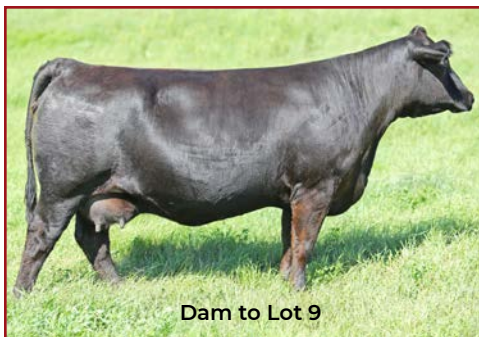
-There is much power in the blood here, and her dam just weaned off our heavy weight bull calf at 1050 lbs, and he will be our feature bull to showcase this fall

-Buy with confidence here, this young female will do nothing but make you money



Lot 9

MADER *Mary* 93J



Dam to Lot 9



Maternal Sister to Lot 9



Full Sister to Lot 9



Full Sister to Lot 9

17 January 2021 • MDR 93J • BPTG1356634 • BW 81

Homo Polled

EPDs						
CE	BW	WW	YW	Milk	MC	MWW
6.8	4.3	88.7	130.1	20.0	4.9	64.4

SIRE: SVS CAPTAIN MORGAN 11Z
BGS/BM CAPTAIN SCREAM 63D
RF SCREAM 215Z

DAM: NCB COBRA 47Y
LFE BS MARY 113B
LFE BS MARY 172Z

AI Bred on April 25th to Mader Son of Anarchy 144H. Exposed to Mader Infinite 17J April 30th - May 23rd. Preg Tested Safe to AI breeding- Due February 4th

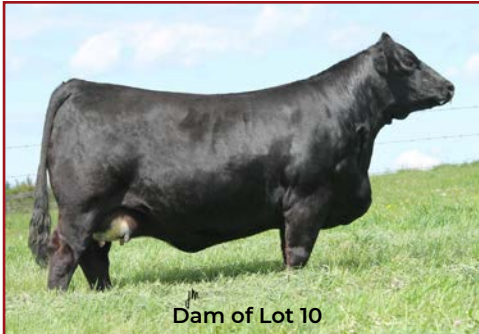
- One of the most complete females in the entire offering
- Much like her two full sisters that sold last year, she is powerfully constructed from nose to tail, exemplifies a tremendous udder attachment, and travels on a great foot
- Her sisters were featured last year selling to Perkin Land and Cattle and Silverlake Farms, both carrying the same service, and we have heard great feedback on how these pairs look
- This female is certainly a feature and will be easy to find sale day

Violet Cow Family



Lot **10**

MADER *Violet* 78J



Dam of Lot 10



Sire of Lot 10

Violet Embryos



13 January 2021 • MDR 78J • BPTG1356627 • BW 78

Homo Polled

EPDs						
CE	BW	WW	YW	Milk	MC	MWW
11.9	1.0	93.6	143.7	33.1	7.9	79.9

SIRE: WS PROCLAMATION E202
CCR COWBOY CUT 5048Z
WS MISS SUGAR C4

DAM: LFE BS VIOLET 641A
NCB COBRA 47Y
LFE BS VIOLET 128Z

Exposed to Mader Infinite 17J April 25th - May 23rd. Exposed to CMS Logic 010H May 24 - June 7. Preg Tested Safe to Infinite 17J - Due March 5th

-A direct daughter from the famous Violet 641A, crossed with the calving ease Proclamation sire who is off the charts for his EPD profile
-In last years Ladies night sale, a maternal sister demanded \$92,000 for half interest to KCH Cattle, and a maternal brother, Mader the National, has made a great impact within the breed
-The Violet cow family has been one of our most profitable cow families, and here is a rare opportunity for you to add a daughter to your herd
-She is moderate in her stature, expresses the great "Violet" front end and udder quality, and is very balanced throughout



Lot //

MADER/KCH Violet 5J

01 January 2021 • MDR 5J • BPG1403168 • BW 81

Homo Polled

EPDs						
CE	BW	WW	YW	Milk	MC	MWW
9.6	2.3	95.8	148.0	25.4	8.0	73.3

SIRE: MADER WALK THIS WAY 224B
MADER P IRON SUGAR 7X

DAM: KCH VIOLET 910G
LFE BS VIOLET 641A

Naturally Bred to Mader Son of Anarchy March 29th. Exposed to CMS Logic 010H April 4th - June 7th. Preg Tested Safe to Son of Anarchy. Due January 8th
 -This genetic combination gets us excited when you see great ones such as Walk This Way, Captain Scream, and Violet all combined together
 -You than combine that with a mating to the Boone Pickens x LFE Sheila 82A, Son of Anarchy sire, and you have a genetic excellence
 -Much like her dam, she is setting up a superb udder, is very easy fleshing and attractive, and will be a work horse for her new owner



Lot 12

Mader Violet 49H



Violet 49H with calf at Side

OFFERING 3 EMBRYOS TO YOUR CHOICE OF SIRE, MADER'S RESPONSIBLE FOR FLUSHING COSTS, COW TO BE FLUSHED AT DAVIS RAIDAN IN FEBRUARY. ANY REMAINING EMBRYOS ARE TO BE RETAINED BY MADER RANCHES, UNLESS ALTERNATIVE AGREEMENT IS MADE



Violet in 2021

MADER Violet 49H

9 January 2020 • MDR 49H • BPTG1318583 • BW 84

Homo Polled

EPDs						
CE	BW	WW	YW	Milk	MC	MWW
12.3	0.9	75.3	119.8	23.0	6.6	60.7

SIRE: TJSC BOONE PICKENS 46C
TJSC KNOCKOUT 121Y

DAM: LFE BS VIOLET 641A
LFE BS VIOLET 128Z

-A rare opportunity to acquire genetics off of the \$92,000 high selling female, Mader Violet 49H, that sold to KCH Cattle
 -This female demanded a lot of attention form all breeds last year, where she went undefeated at many consecutive shows, and has turned into a beautiful cow
 -If you like cows with unreal front ends, massive rib shape, superior udder structures, and flawless foot and leg design, than here is your opportunity to acquire some of the only genetics that will be offered out of this female this year

Opal Cow Family

Lot 13



MADER Opal 21J

3 January 2021 • MDR 21J • BPG1356597 • BW 83

Homo Polled

EPDs						
CE	BW	WW	YW	Milk	MC	MWW
9.0	2.1	92.0	139.8	23.7	7.4	69.7

SIRE: MADER WALK THIS WAY 224B
MADER P IRON SUGAR 7X

DAM: MADER OPAL 532F
MADER OPAL 124Z

Naturally Bred to Mader Son of Anarchy March 30th. Exposed to CMS Logic 010H April 4th - June 7th. Preg Tested Safe to Son of Anarchy. Due January 9th
 -Here is one that really excites us for her sleek design and the overall balance and power she offers
 -Stemming from the sought after "Opal" cow family, we believe this young female will rise herself to the top of any herd quite quickly
 -I repeat myself in many footnotes, but I feel the importance of letting people know that we have over 30 direct daughters or granddaughters of Opal 652S in the herd, is very gratifying
 -She combines maternal greatness with Ironsugar 7X on the top side, Opal 652S on the bottom side, and you add in Sheila 82A, with her early service to Mader Son of Anarchy

Lot 14



MADER/KCH Opal 106J

22 January 2021 • MDR 106J • BPG1356638 • BW 84

Homo Polled

EPDs						
CE	BW	WW	YW	Milk	MC	MWW
5.2	5.2	81.0	122.4	31.9	4.0	72.4

SIRE: SPRINGCREEK LINER 56U
IPU BLACK CINCH 95G
TRI-R MS BLAKE 33B

DAM: MADER OPAL 144D
MADER SECRET SERVICE 78B
MADER OPAL 124Z

Exposed to Mader Infinite 17J April 4th - May 23rd. Exposed to CMS Logic 010H May 24 - June 7. Preg Tested Safe to Infinite 17J - Due January 31st.
 -A direct daughter out of the \$50,000 IPU Black Cinch sire, combined with a never miss Opal daughter
 -She is serviced to our high selling heifer bull, a Mader Walk this Way son, combined with a Mader The National daughter
 -These Opal daughters are tremendous producers, focussing on great foot structure, impeccable udders, and big weaning weights

Lot 15



MADER Flirt 184J

11 February 2021 • MDR 184J • BPTG1403172 • BW 85

Homo Polled

EPDs						
CE	BW	WW	YW	Milk	MC	MWW
9.1	2.3	87.7	140.4	22.8	3.8	66.6

SIRE: MADER WALK THIS WAY 224B
MADER P IRON SUGAR 7X

DAM: RF CERTAINLY FLIRTIN 525C
RF CERTAINLY FLIRTIN 202Z

NCB COBRA 47Y
SVS CAPTAIN MORGAN 11Z

AI Bred to Mader Son of Anarchy March 30th. Exposed to CMS Logic 010H April 4th - June 7th. Preg Tested Safe to AI. Due January 9th
 -A real exciting genetic combination here when you cross the Ironsugar cow family onto the Certainly Flirtin cow family
 -Thriving in maternal greatness bred into her, and mating her to the "LFE Sheila 82A" son, Son of Anarchy, will be a dandy combo
 -You will appreciate this females stylish front third, her body capacity and rib shape, her great udder coming down, and her soundness on the move
 -Her maternal sister was a feature last year selling to Kaden Johnson

Lot 16



MADER Intensity 23J

3 January 2021 • MDR 23J • BPG1356598 • BW 85

Homo Polled

EPDs						
CE	BW	WW	YW	Milk	MC	MWW
8.3	3.3	95.0	141.1	31.2	6.4	78.7

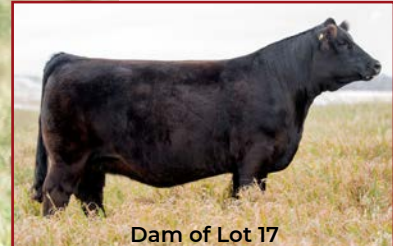
SIRE: MADER WALK THIS WAY 224B
MADER P IRON SUGAR 7X

DAM: MADER INTENSITY 500F
MADER P INTENSITY 79W

NCB COBRA 47Y
WFL DOWNTOWN 26D

AI Bred to Mader Son of Anarchy March 29th. Exposed to CMS Logic 010H April 4th - June 7th. Preg Tested Safe to AI. Due January 8th
 -This female has been a standout since a young age, with her attractive presence, early growth, and maternal eye appeal
 -The Walk this Way females are all so balanced and feminine made, carry ample body to them, and are very sound in their udder attachments and stride
 -Her first calving dam was one of our favorite replacement females that year, and did not disappoint on her first calf
 -High probability the resulting calf should offer some chrome for the new buyer

Lot 17



Dam of Lot 17



Maternal Grandsire of Lot 17

MADER Goldie 116J

25 January 2021 • MDR 116J • BPG1374728 • BW 81

Homo Polled

EPDs						
CE	BW	WW	YW	Milk	MC	MWW
13.5	-0.3	70.3	101.2	25.2	5.7	60.4

SIRE: WHL GOLD KEY 1619D
HOOKS SHEAR FORCE 38K
CMS SODA POP 417B

DAM: RUSGOLD MS SCHOCKEM 3G
SSC SHELL SHOCKED 44B
BARLEE GOLDSLOCKS

Exposed to Mader Infinite 17J April 4th - May 23rd. Exposed to CMS Logic 010H May 24 - June 7. Preg Tested Safe to Infinite 17J - Due February 19th

- A female that could have started the catalogue for her outcross genetic makeup, along with a very balanced and impressive bodytype
- Her dam was purchased as one of the lead of black bred heifers out of the Border City sale a few years back and this was the calf she was carrying
- The Rusgold Ms Shockem cow has since entered the donor program, and one of the very best black bulls we will offer this spring will be a transplant calf out of this cow
- She safe to the great Infinite sire, who was our lead off calving son out of Mader Walk this Way, who combines calving ease with ample performance

Lot 18



Dam of Lot 18



Maternal Sister of Lot 18

MADER Hugs 80J

14 January 2021 • MDR 80J • BPG1356629 • BW 84

Homo Polled

EPDs						
CE	BW	WW	YW	Milk	MC	MWW
11.5	1.6	79.3	127.8	16.5	6.2	56.2

SIRE: MADER THE NATIONAL 43E
LFE THE RIDDLER 323B
LFE BS VIOLET 641A

DAM: BLACKRIVER CUTE HUGS 79C
WHEATLAND TERMINATOR 202Z
BLACKRIVER BARE HUGS 66A

Exposed to Mader Infinite 17J April 4th - May 23rd. Exposed to CMS Logic 010H May 24 - June 7. Preg Tested Safe to Infinite 17J - Due February 11th

- Here is a pretty special combination crossing the Violet 641A cow family onto the Hugs and Kisses family
- We purchased the dam of this heifer from Blackriver Farms at the Quality Control sale a few years back, and she has produced some real nice packaged progeny for us
- Much like her dam, she is moderate in design, but mighty in terms of spring of rib, quality of foot and udder, and pretty through that front third
- The Walk This Way son, Mader Infinite 17J, should calve easy and add some extra punch and frame to this resulting calf

Darlin' Embryos



Lot 19

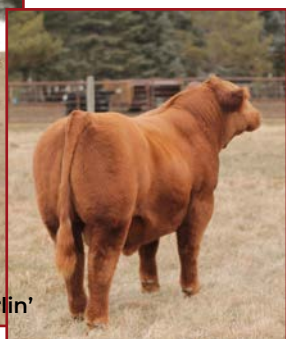
IRCC Darlin' 613D



Sire of Emrbyos - RF No Limits



Walk the Line - Son of Darlin'



Daughter of Darlin'



Daughter of Darlin'



Daughter of Darlin'

SELLING 3 EMBRYOS

16 January 2016 • TOPS 613D • PG1175887 • BW 82

EPDs						
CE	BW	WW	YW	Milk	MC	MWW
7.3	2.9	85.4	122.7	27.5	3.5	70.2

R PLUS YUMA 9087G
 SIRE: RF NO LIMITS 1112J
 RUST MISS 6217D

Homo Polled

MR HOC BROKER
 DAM: IRCC DARLIN' 613D
 DESTINY ODIN SHEA

-I could probably write a novel about this donor female and what she has accomplished in a short time, but I'm going to sum it up, and say "She's a great one!"
 -Her heifer calves have been highlighted in FNL over the past few years averaging north of \$35,000, and her feature son, Mader Walk the Line, just demanded \$280,000 to KT Ranches and Canadian Sires
 -Her ability to pass on structural greatness, ideal udder and foot character, and that attractive look they all carry, is second to none
 -This mating to the \$90,000 Yuma son, RF No Limits, is going to be a very rewarding combination

Lot 20



Maternal Sister to Lot 20



Service Sire

MADER Lexy 79J

Homo Polled,

14 January 2021 • MDR 79J • PG1356628 • BW 86

EPDs

CE	BW	WW	YW	Milk	MC	MWW
9.4	3.4	80.0	117.6	22.0	7.0	62.0

BGS/BM CAPTAIN SCREAM 63D

ACS RED KNIGHT 715T

SIRE: SVS BETTS 808F

DAM: SUN STAR LEXY 8Y

WFL RED SAGE 506C

SUN STAR LEXY 19W

Exposed to CMS Logic 010H April 4 - June 7. Preg Tested Safe to Logic - Due March 6th

- When I picture an aged cow on the farm that has been a "no miss" producer, the Lexy 8Y female comes to mind quickly
- Whether a bull or female has come out of this cow, they always find there way to the top of their contemporary group for extra growth and look
- The Betts females have been real highlights, and we can see their extra performance already coming out in their first offspring
- This girl is feminine made, very nice in her lines, very complete in her makeup, and is very athletic on the move

Lot 21



Service Sire



Sire of Lot 21

MADER Jackpot 102J

Homo Polled

21 January 2021 • MDR 102J • PG1356637 • BW 80

EPDs

CE	BW	WW	YW	Milk	MC	MWW
7.1	3.6	70.5	108.1	23.0	3.3	58.3

LFE VEGAS 3145A

WFL TROJAN 63C

SIRE: DMF CAPITAL GAINS 828F

DAM: MADER JACKPOT 18E

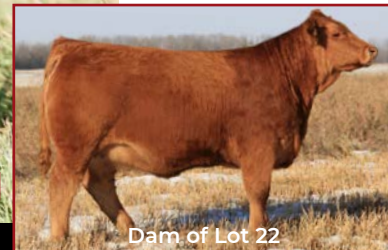
DMF MS TUCKER 112Y

MADER P JACKPOT 59S

Exposed to Mader Infinite 17J April 13th - May 23rd. Exposed to CMS Logic 010H May 24 - June 7. Preg Tested Safe to Infinite 17J - Due February 10th

- The only Capital Gains female on offer this year, but one who sums up the consistency we have learned to expect from him
- The first sons out of this sire were very well accepted at our bull sale, and the females were some of the heavy weights come weaning with a very impressive look and style to them
- Her young dam just weaned off one of the heavy weight red bulls in the pen, and maternal traits that shine through the Jackpot cow family are very profitable
- Analyze the service to this girl, the combination of Walk This Way and The National, will result in an outcross red pedigree

Lot 22



MADER/KCH *Drama Queen* 38J

6 January 2021 • MDR 38J • PG1356607 • BW 87

Homo Polled

EPDs						
CE	BW	WW	YW	Milk	MC	MWW
7.9	3.4	84.9	126.2	25.0	8.0	67.5

SIRE: SVS BETTS 808F
WFL RED SAGE 506C

BGS/BM CAPTAIN SCREAM 63D
WFL RED SAGE 506C

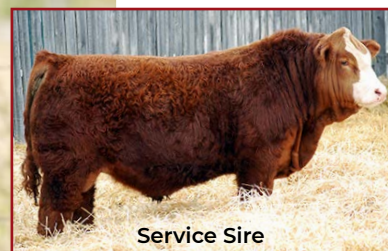
DAM: LBCC DRAMA QUEEN 607D
GREYLEDGE RING OF FAITH

LBCC BUCKSHOT 404B

AI Bred to CMS Logic 010H March 26th. Exposed to CMS Logic 010H April 4 - June 7. Preg Tested Safe to AI - Due January 5th

- Here is the meat machine in the offering and a female that is very easy to spot for her added depth and dimension
- Her full sister was a feature last year, and her maternal brother is an absolute stud in the bull pen
- When I picture a brood cow, this female comes to mind, and following the footsteps of her dam, she will raise you pounds
- An early service to the the blood red, baldy, outcross, CMS Logic Logic, will be super exciting

Lot 23



MADER *Malibu* 108J

22 January 2021 • MDR 108J • PG1374665 • BW 83

Homo Polled, Homo Black

EPDs						
CE	BW	WW	YW	Milk	MC	MWW
7.5	3.1	74.9	110.7	17.1	3.8	54.6

SIRE: SVS BETTS 808F

BGS/BM CAPTAIN SCREAM 63D
WFL RED SAGE 506C

DAM: MADER MALIBU 15E

WFL TROJAN 63C
MADER P MALIBU 40W

AI Bred to WLB Top Tier 456G April 4th. Exposed to CMS Logic 010H April 10 - June 7. Preg Tested Safe to AI - Due January 14th

- Stylish, extended throughout, and carries the stoutness and boldness we have come to expect from the Betts sire
- Our red offering is small this year, but strong, and females such as this with an early service to the likes of Top Tier, are going to make for a quick return on investment
- The Malibou cow family is noted for heavy milking females that are easy fleshing and easy to maintain

Lot 24



Brother to Lot 24



Maternal Granddam

MADER Ecstasy 145J

5 February 2021 • MDR 145J • BPG1356654 • BW 83

Homo Polled

EPDs						
CE	BW	WW	YW	Milk	MC	MWW
6.9	3.5	88.5	131.8	17.8	5.5	62.1

SIRE: MADER PEARL HARBOUR 149F
LFE BS SHEILA 82A

DAM: MADER ECSTASY 305D

LFE THE RIDDLER 323B
BENS X-TASY 4X

Exposed to Mader Infinite 17J April 13th - May 23rd. Exposed to CMS Logic 010H May 24 - June 7. Preg Tested Safe to Infinite 17J - Due February 19th

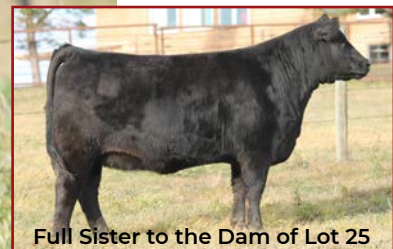
-This heifer is easy to pick out when going through the sale offering as she is long made, is powerful in her muscle expression, and is very deep bodied and complete

-The influence of Sheila 82A is evident in this girl through Pearl Harbour, and we cant say enough good things about the group of Riddler cows we have in the herd

-A great udder setting up, she is broody made, and the resulting calf should be a combination of style and performance

-Mader Infinite has a modest 86lb BW, ranks in the top 25% for CE, yet than boasts a WW and YW in the top 3%

Lot 25



Full Sister to the Dam of Lot 25



Maternal Granddam of Lot 25

MADER Envy 173J

24 February 2021 • MDR 173J • BPRS1356665 • BW 86

Homo Polled

EPDs						
CE	BW	WW	YW	Milk	MC	MWW
6.1	1.7	72.6	110.8	11.9	4.1	48.2

SIRE: MADER PEARL HARBOUR 149F
LFE BS SHEILA 82A

DAM: MADER ENVY 13E

BROOKING BANK NOTE 4040
WHEATLAND ENVY 281Z

Exposed to Mader Infinite 17J April 13th - May 23rd. Exposed to CMS Logic 010H May 24 - June 7. Preg Tested Safe to Infinite 17J - Due February 17th

-Superior in her structure, elevated neck and head, and so bold and massive in her rib shape

-The Envy daughters are well known around here to have perfect little teats and spread, great feet that are problem free, and really have a balanced design

-This 3/4 female is almost a March born, and is great combination between power and elegance, with influence from Heavy Hitter, Bank Note, Sheila, and Envy

-A full sister to the dam was purchased through FNL by KT Ranches, and another through Simmpower to Labatte Simmentals

Lot 26



Maternal Sister of Lot 26



Service Sire

MADER Harper 159J

9 February 2021 • MDR 159J • BPG1400120 • BW 82

Homo Polled

EPDs						
CE	BW	WW	YW	Milk	MC	MWW
5.7	3.3	80.1	118.8	17.0	2.8	57.1

SIRE: MADER PEARL HARBOUR 149F
LFE HEAVY HITTER 352C
LFE BS SHEILA 82A

DAM: RCR MS KAY 10E
MR HOC BROKER
RCR MS KELTIE 3C

AI Bred to March 29th to Mader Son of Anarchy 144H. Exposed to Mader Infinite 17J April 13th - May 23rd. Preg Tested Safe to AI Breeding - Due January 8th

- A full sister in last years sale was purchased by Thompson Livestock in BC, and this female is setting up to make a real impact going forward
- She is very fluid in her movement, showcases a very attractive front third, and is very complete and balanced in her makeup
- Much like her dam, her udder is setting up to be superior, and an early service to Son of Anarchy should make for a quick ROI

Lot 27



Dam of Lot 27



Sire of Lot 24-27

MADER Blackgold 148J

6 February 2021 • MDR 148J • BPG1356655 • BW 82

Homo Polled

EPDs						
CE	BW	WW	YW	Milk	MC	MWW
5.2	3.8	80.3	114.3	12.5	2.2	52.7

SIRE: MADER PEARL HARBOUR 149F
LFE HEAVY HITTER 352C
LFE BS SHEILA 82A

DAM: MADER BLACKGOLD 407E
SPRINGCREEK OLYMPIAN 66A
MADER BLACKGOLD 9A

AI Bred to April 25th to Mader Son of Anarchy 144H. Exposed to Mader Infinite 17J April 13th - May 23rd. Preg Tested Safe to AI Breeding - Due February 4th

- There is power in the blood when you look at this pedigree, crossing Pearl Harbour onto a broody Olympian daughter
- Her dam is so powerful when you look at the volume, the depth, and width of base she carries
- This baldie heifer is simply an easy keeper, one which will excel in milk production, is mild mannered, and carrying a service to the \$50,000 Mader Son of Anarchy will be very profitable

Lot 28



Sire of Lot 28



Paternal Grandsire

MADER Kaula 46J

7 January 2021 • MDR 46J • BPG1356610 • BW 79

Homo Polled

EPDs

CE	BW	WW	YW	Milk	MC	MWW
13.0	1.1	79.0	122.5	25.4	8.9	64.9

LFE THE RIDDLER 323B

RF MAYHEM 5W

SIRE: MADER THE NATIONAL 43E

DAM: RJA KAULA T1Z

LFE BS VIOLET 641A

RJA U R A STAR 22U

Naturally Bred to April 1st to Mader Son of Anarchy 144H. Exposed to Mader Infinite 17J April 5th - May 23rd. Preg Tested Safe to Son of Anarchy - Due January 11th

- We saved 3 powerhouse heifers to end the catalogue, and here is one that on sheer power and design will find herself closer to the front third of the sale order
- We love the National daughters we have in production, they have the great Violet influenced udders and foot quality, maintain a very fleshy body score, and are weaning off the big calves
- The Ebonys Intuition influence on the bottom side adds some style and maternal to this young matron, and the service to Son of Anarchy will add a little more extension and length to her broody and massive design

Lot 29



Service Sire



Paternal Granddam

MADER Nanny 174J

26 February 2021 • MDR 174J • BPG1356666 • BW 82

Homo Polled

EPDs

CE	BW	WW	YW	Milk	MC	MWW
7.3	3.4	79.2	123.0	25.8	5.7	65.4

LFE THE RIDDLER 323B

MADER TRITON 1B

SIRE: MADER THE NATIONAL 43E

DAM: MADER THE NANNY 320D

LFE BS VIOLET 641A

MRL MISS 667P

AI Bred to April 19th to Mader Son of Anarchy 144H. Exposed to Mader Infinite 17J April 25th - May 23rd. Preg Tested Safe to AI Breeding - Due January 29th

- Here is just about a March born female that gets noticed by many who have toured the sale group
- The depth of flank, the great haircoat, the correct design, and angular phenotype she carries is remarkable for her age
- Her dam has so much middle and power, and its evident to see in all of her progeny, making her a no miss cow
- Endless opportunity on this resulting calf, combining LFE Violet with LFE Sheila, two of our most influential black females

Lot **30**



Sire of Lot 30



Maternal Sister to Lot 30

MADER A List 39J

Homo Polled, Homo Black

6 January 2021 • MDR 39J • BPG1356608 • BW 88

EPDs					
CE	BW	WW	YW	Milk	MC MWW
5.3	6.3	90.7	129.0	25.2	4.6 70.6

RF CAPACITY 742E

SIRE: SVS DYNASTY 915G

WFL RED SAGE 506C

DAM: MADER FULL MONEY 145X

MFR ROCKET GIRL 9122W

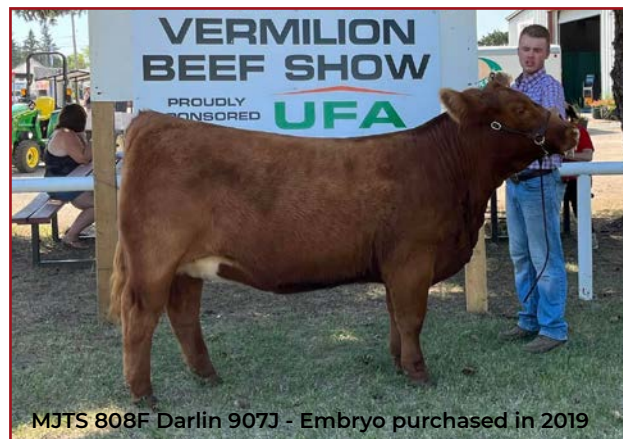
Exposed to Mader Infinite 17J April 13th - May 23rd. Exposed to CMS Logic 010H May 24 - June 7. Preg Tested Safe to Infinite 17J - Due February 16th

- I feel this powerhouse has a lot to offer, and her picture maybe doesn't quite exemplify the depth of body and power that she demonstrates in real life
- We are impressed with volume and capacity within the SVS Dynasty progeny, and feel they will make leading cows in any herd
- Her dam just weaned off one of the heaviest bull calves at 1050 lbs, and is one of the most powerful cows on the whole farm to analyze
- Maternal sisters in the herd is making her mark quickly aswell, and I will point out that Mader Full Money is actually a full brother to Mader Ironsugar 7X
- This might be one of the most profitable buys in the whole sale as we have never let a daughter go out of this cow

CUSTOMER SUCCESS



Mader Opal 124H - Purchased from FNL 2021



MJTS 808F Darlin 907J - Embryo purchased in 2019



Mader Darlin' 4E - Purchased from FNL 2020



Mader Lady 50G - Purchased out of 2020 Ladies Night

REFERENCE SIRES



Mader Walk This Way 224B

27 July 2014 • BPTG1139930

LFE VIPER 455U

SIRE: NCB COBRA 47Y

NCB MISS DREAM 22T

MADER P BLACK IRONMAN 22U

DAM: MADER P IRON SUGAR 7X

LFE FAMOUS 632T

Homo Polled, Hetero Black

	EPDs					
	CE	BW	WW	YW	Milk	MC MWW
	12.5	-0.1	94.1	147.7	28.5	10.4 75.6
% RK	10	4	3	2	45	1 15



SVS Betts 808F

4 January 2018 • PTG1235797

SVS CAPTAIN MORGAN 11Z

SIRE: BGS/BM CAPTAIN SCREAM 63D

RF SCREAM 215Z

R PLUS RELOAD 2006Z

DAM: WFL RED SAGE 506C

WFL RED SAGE 1003Y

Homo Polled

	EPDs					
	CE	BW	WW	YW	Milk	MC TM
	7.9	4.8	90.7	134.0	21.8	6.3 67.2
% RK	40	70	5	10	90	25 45



SVS Dynasty

8 January 2019 • BPTG1275447

WFL WESTCOTT 24C

SIRE: RF CAPACITY 742E

RF FAMOUS 409B

R PLUS RELOAD 2006Z

DAM: WFL RED SAGE 506C

WFL RED SAGE 1003Y

Homo Polled, Hetero Black

	EPDs					
	CE	BW	WW	YW	Milk	MC MWW
	5.1	6.0	91.0	127.9	22.2	4.1 67.7
% RK	75	90	10	20	85	50 45



Mader Pearl Harbour 149F

8 February 2018 • BPTG1242628

MRL DISCOVERY 21A

SIRE: LFE HEAVY HITTER 352C

LFE BS JULI 64IX

LFE THE DARK NIGHT 350U

DAM: LFE BS SHEILA 82A

LFE BS SHEILA 136T

Homo Polled, Homo Black

	EPDs					
	CE	BW	WW	YW	Milk	MC MWW
	4.6	3.4	88.0	129.2	12.9	2.2 56.9
% RK	75	45	10	15	100	80 90



Mader The National 43E

12 January 2017 • BPTG1205672

LFE GOTHAM 819Y

SIRE: LFE THE RIDDLER 323B

LFE BS CHARO 23Y

NCB COBRA 47Y

DAM: LFE BS VIOLET 641A

LFE BS VIOLET 128Z

Homo Polled, Hetero Black

	EPDs					
	CE	BW	WW	YW	Milk	MC TM
	11.3	2.4	96.8	160.6	22.6	7.9 71.0
% RK	15	30	2	1	80	10 30



WS Proclamation E202

21 February 2017 • BPTG1248522

TRIPLE C SINGLETARY S3H

SIRE: CCR COWBOY CUT 5048Z

CCR MS 4045 TIME 7322T

CLRS GRADE-A 875 A

DAM: WS MISS SUGAR C4

WS ANISE A71

Homo Polled, Homo Black

	EPDs					
	CE	BW	WW	YW	Milk	MC MWW
	13.9	0.3	100.9	146.9	32.4	10.8 82.9
% RK	4	10	1	2	30	1 2

6 MADER GRAND KIDS



Gradin Beazley

Hawkin Mader

Harper Walker

Braxton Beazley

Stella Mader

Sloan Walker

34th Annual

MADER

Ranches

BULL POWER

SALE

Friday, February 17th, 2023

@ 1PM

AT

MADER RANCHES
CARSTAIRS, AB



• 90 Bulls

: Yearling &

Extra Age

: Simmental &

• SimAngus

Easy Calving Bulls for Heifers

Performance Bulls for Cows

Bulls Tested for Polled, Black & Leptin

\$2500 IN BULL BUYING CREDITS

Call for a catalogue or view it & the videos online at

www.maderranches.com

Randy & Ronda Mader
403.660.1123
rrmader13@gmail.com

Ryley & Jill Mader & Family
403.807.8140
maderranches@gmail.com



Request Return To:
Box 1 Site 12 RR2
Carstairs, AB T0M 0N0

Time Sensitive Material

Time Sensitive Material



Ladies
NIGHT

BRED FEMALE SALE