



# NORTHERN ALLIANCE BULL SALE



Poplar Meadows Angus  
*Tanya, Monty & Taylor Belsham*

Houston, BC, Tel 250-845-3050, Cell 250-845-8474  
[www.poplarmeadowsangus.ca](http://www.poplarmeadowsangus.ca)

Red Moon Angus  
*Jim & Shirley, Tom & Charlotte Moon*

Vanderhoof, BC, Tel 250-567-9762, [redmoon@hwy16.com](mailto:redmoon@hwy16.com)  
[www.redmoonangus.com](http://www.redmoonangus.com)

Marberly Angus  
*Kim Beaudette*

Burns Lake, BC, Tel 250-692-2349  
[marberlyangus@yahoo.ca](mailto:marberlyangus@yahoo.ca)

Blast Angus  
*Brent, Lia, Shea & Tori Long*

Houston, BC, Tel 250-845-3500, Cell 250-845-1147  
[www.blastangus.ca](http://www.blastangus.ca)

**MARCH 23<sup>rd</sup> 2019**

**Fort Fraser, B.C., at the Belsham Farm**

**116 BLACK AND RED ANGUS BULLS ON OFFER**



# NORTHERN ALLIANCE BULL SALE

## VIEW THE SALE ONLINE

Online bidding available through DLMS

[www.dlms.ca](http://www.dlms.ca)

Mark Shologan (780) 699-5082

## SALE DAY PHONES:

(250) 567-0063 (Shirley Moon)

(250) 567-0922 (Jim Moon)

(250) 845-8474 (Tanya Belsham)

(250) 845-1147 (Lia Long)

(780) 507-1905 (Kim Beaudette)

## AUCTIONEER:

Donnie Raffan (250) 558-6789

## BUYERS REPRESENTATIVES:

Robert Carlson (785) 556-0701

John Dolliver (430) 741-5629

Al Smith (250) 570-2143

Wilf Smith (250) 267-3898

OBI Livestock, Mark Holowaychuk (403) 896-4990

## CANADIAN ANGUS ASSOCIATION

Brian Good, Field Man

(403) 391-4037

## INSURANCE:

Insurance will be available sale day.

## FLIGHTS

West Jet & Air Canada fly into Prince George B.C.

## ACCOMMODATIONS:

North Country Inn (250) 567-3048

Hillview Motel (250) 567-4468

## FEED & DELIVERY

Bulls can be fed until May 1st for \$3 a day .  
Bulls must be insured. Free delivery to Williams  
Lake and Kamloops BC Livestock yards on bulls  
over \$3500 at our convenience prior to May 1st.

# MARCH 23<sup>rd</sup> 2019

Join us for lunch at 11:30 am, sale begins at 1:00 pm

**Fort Fraser, at the Belsham Farm**

## RED MOON ANGUS

Jim, Shirley and Tom Moon

Vanderhoof, B.C.

Tel (250) 567-9762

[redmoon@hwy16.com](mailto:redmoon@hwy16.com)

[www.redmoonangus.com](http://www.redmoonangus.com)

## POPLAR MEADOWS

Tanya, Monty and Taylor Belsham

Houston, B.C.

Tel (250) 845-3050

Cell (250) 845-8474

John Dolliver (403) 741-5629

[www.poplarmeadowsangus.ca](http://www.poplarmeadowsangus.ca)

## MARBERLY ANGUS

Kim Beaudette

Burns Lake, B.C.

Tel (250) 692-2349

Cell (780) 507-1905

[marberlyangus@yahoo.ca](mailto:marberlyangus@yahoo.ca)

## BLAST ANGUS

Brent, Lia, Shea and Tori Long

Houston, B.C.

Tel (250) 845-3500

Cell (250) 845-1147

[www.blastangus.ca](http://www.blastangus.ca)

Internet Bidding Available

**D | L | M | S**  
[www.dlms.ca](http://www.dlms.ca)

For more information Call DLMS Reps:  
Whitney Bosovich 780.991-3025  
Mark Shologan 780.699.5082

## VIEW THE CATALOGUE ONLINE:

[www.northernalliancebullsale.com](http://www.northernalliancebullsale.com)

## Can't make it to the sale? **Watch & Bid Online.**

With DLMS you can Watch, Listen & Bid on your computer just like you were there with online bidding over the internet

### Instructions for Viewing And Bidding At the Sale

Visit [www.dlms.ca](http://www.dlms.ca), Fill out the registration form located under registration and sign-up for your free user account to select a username and password.

**BIDDERS** - To be approved as a bidder, Log in and click BUYER APPROVAL tab, select the sale you are interested in bidding at and click sign up.

For more information or for help getting approved Call:  
Whitney Bosovich 780.991-3025 or Mark Shologan - 780-699-5082

Direct Livestock Marketing Systems  
We're Making the Connection

**DLMS**  
[www.dlms.ca](http://www.dlms.ca)

*To find an agent or sale near you today  
visit [www.dlms.ca](http://www.dlms.ca)*

**Purebred Sales • Daily Presort Sales**  
**Direct Off-farm Sales every Thursdays at 10:00 am**



*Join us for the*

## **SHADES OF AUTUMN FEMALE SALE**

October 12, 2019  
Houston, BC

## BUYERS DRAW

On sale day we will have a  
registered buyers draw for:

*Two 5 litre jugs of Ivomec*

Donated by  
Burns Lake Vet Clinic

## JACKETS

On sale day we will present jackets for:

*High Seller & Volume Buyer*

Donated by  
Northern Alliance Group

## BREEDING BULLS FOR *ALL BUDGETS*

### **2018 Sale Breakdown 114 head through the ring**

47 bulls sold .....	\$4000 and under
26 bulls sold .....	\$4001 to \$4999
30 bulls sold .....	\$5000 to \$6999
4 bulls .....	\$7000 to \$9000
4 bulls .....	\$9000 and up



# POPLAR MEADOWS ANGUS

## *Black Angus Yearlings*



Welcome to the 9th annual Northern Alliance Bull sale. 2019 will be 100 years the Belsham family has farmed in Fort Fraser BC. This also is the 54th year Poplar Meadows Angus has been operating.

At Poplar Meadows we strive to have deep-bodied, moderate framed, easy-fleshing females with longevity and the ability to function with minimal inputs. When one cow is in excellent condition and another is in poor condition in the

same environment, the difference is the genetic superiority of one animal compared to another. Some cattle can get by on less feed because they need less feed for maintenance. Cattle that require less feed for maintenance are able to gain more efficiently, allowing a better feed conversion and more profitability for you the rancher.

Our bulls have been fed a Total Mixed Ration to gain 3 lbs a day. They are run in large groups in big pens for lots of exercise. Bulls will have all passed a semen test and be ready to go for work. We 100% stand behind our bulls and have a large pen of bulls always available if something was to arise.

I always hear from people that they don't want a show bull but rest assured I never breed for a show bull I breed with the commercial cow/calf guy in mind. I've been successful in the show ring by bringing sound, correct functional cattle to town the same kind any commercial cattleman would be happy to own.

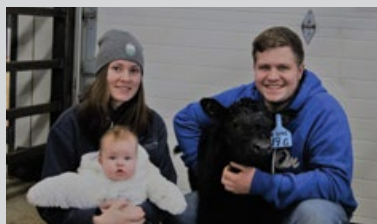
We would like to thank John & Tammy Dolliver, Kelly Wall, Olaf & Gloria Halvorson, Joe & Denise Smith, and Robert Carlson for all your help over the past year. We also appreciate Charly and Lucille Belsham for coming up every year to help wherever they can. Taylor and his fiancée Alaina along with her daughter Saphira and new baby Ella have been helping us out as much as possible with Taylor taking a key role in equipment maintenance and more of the day to day operations. Becoming Grandparents was definitely the highlight of 2018. Who knew how amazing it would be.

2018 had its challenges but hopefully 2019 is smooth sailing. Monty's check up in December was all good and my new hip in October has healed up well. We truly appreciate all the love and support given to us. It's comforting having so many people in your corner.

What this does is really put life into perspective. My Mom always shared this quote "This is your life not a dress rehearsal" So get out there and live life to the fullest.

Videos will be available on DLMS.ca in March and you can bid online as well. We understand our location can at times detour prospective buyers but we make every effort to work with you to get the bulls delivered. Post sale feeding is available please discuss with Tanya. We have decided not to give out angus tags this year and instead offer \$100 off per bull picked up on sale day.

Please come join us at our Fort Fraser Ranch sale facility for lunch and to peruse the bulls. We know you have lots of options where to buy your next bull but I believe you would be hard pressed to find a group of breeders who will go the extra mile to provide top notch customer service as the Northern Alliance group.



# PAST SALE CATTLE SUCCESS



Left: PM Executive Decision, High seller in last years Northern Alliance Sale, a Natural Law son.

Right: Proud to have bred the 2018 Supreme Champion Female at Agribition, a Natural Law daughter.

## HERD HEALTH

All our calves are vaccinated in the spring (April-May) with Ultrabac 7 Somubac and Pyramid FP5 + Presponse and a second vaccination in the fall prior to weaning (Sept or Oct). Live virus vaccine. Our entire cowherd receives prebreeding vaccination of Express FP 5 yearly and every 2 years Ultrabac 7 Somubac. Entire herd is treated with Ivomec yearly, usually bulls will be done twice a year. We are proud to belong and follow the VBP+ program. We feel strong about maintaining herd health for our protection and yours.

## A WORD ABOUT BIRTHWEIGHTS

Angus Bulls have long been known for their paramount calving ease. If you are breeding heifers, Angus is the go-to breed of choice. But what about the so-called “big” birth weight Angus bulls - where do they fit in? The vast majority of mature cows calve unassisted - it is pretty rare for a mature cow to need assistance, except for abnormal deliveries (backwards, breech, twins, and ECT.). Data reported to the AAA shows that 99% of Angus cows, second calf or beyond, calves unassisted and only 1% need some type of assistance (abnormal deliveries excluded from this data).

Back to the question at hand: where does the “big” birth weight Angus bulls fit in? Example if you have a bull with a Birth EPD of +5, he would be 3.2 pound heavier than the average (breed average BW EPD 1.8) ( $5 - 1.8 = 3.2$  pounds difference). However, his superior growth EPDs mean he will wean bigger calves and put way more money in your pocket than the average Angus bull! The moral of the story: If you are breeding mature cows to an Angus bull, don't make birth weight be your focus.

*Wrote and printed with permission from Koupal Angus*

# POPLAR MEADOWS ANGUS

## *Reference Sires*



**S A V BISMARCK 5682**



**PM JOURNEY 522**



**MUSGRAVE AVIATOR**



**MAY-WAY BREAKOUT 1310**



**BAR-E-L NATURAL LAW 52Y**



**PEAK DOT PIONEER 124B**



**S A V CUTTING EDGE 4857**



**LD COMPLETE 319**



**DUFF TRIPLE CROWN 262**



# POPLAR MEADOWS ANGUS

## *Reference Sires*



**SANKEYS JUSTIFIED**



**HF KODIAK 5R**



**SOO LINE MOTIVE**



**EF TITAN**



**BANK NOTE**



**PM THUNDERSTRUCK**



**C&C DENVER 4008**



**HF THUNDERBIRD 146Y**



**Reference Dam - MVF ROSEBUD 313U**





Lot 501

# 501

**PM MOTIVE 1'18**

January 06, 2018 / FIRE 1F / 2031248

HF KODIAK 5R AMF CAF OHF NHF MAF DDF  
**500 LINE MOTIVE 9016**  
TLA BEAUTY 5R

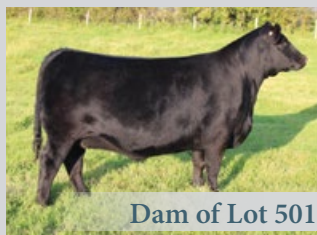
S A V 004 DENSITY 4336 DMF AMF CAF OHF NHF OSF DDF  
**GREENWOOD PRIDE JJP 3D**  
BAR-E-L PRIDE 118Z

SANDY BAR ADVANTAGE 43M DDF  
WILBAR RUBY 955N  
RR 7407 RAINMAKER 2154  
TERRLENE BEAUTY 35F

S A V 8180 TRAVELER 004 DMF DMF AMF CAF OHF NHF OSF DDF  
S A V MAY 7238 CAF DDF  
S A V IRON MOUNTAIN 8066 DMF AMF CAF OHF NHF MAF DDF  
EVERBLACK G R PRIDE 76T

PERF	BW	Adj 205D
	78	691

EPDS	BW	WW	YW	MILK	TM	CED	CEM
	1.8	46	80	17	40	6	3



Dam of Lot 501

Motive bull out of a heifer I bought in the Motive Event as the high selling angus bred heifer. The heifer did a great job on her first offspring and adapted well to life in BC. Not all prairie cattle do so well on our different grass and pasture/range conditions.



Lot 502

# 502

**PM MOTIVE 2'18**

January 18, 2018 / FIRE 2F / 2031249

HF KODIAK 5R AMF CAF OHF NHF MAF DDF  
**500 LINE MOTIVE 9016**  
TLA BEAUTY 5R

EXAR DENVER 2002B AMF CAF NHF OSF DDF  
**PM POLLY 49'16**  
DUFF NE 434 POLLY 0147

SANDY BAR ADVANTAGE 43M DDF  
WILBAR RUBY 955N  
RR 7407 RAINMAKER 2154  
TERRLENE BEAUTY 35F

EXAR UPSHOT 0562B AMF CAF NHF OSF DDF  
EXAR ROYAL LASS 1067 DDF  
DUFF NEW EDITION 6108 DMF AMF CAF OHF NHF DDF  
MH POLLY 434

PERF	BW	Adj 205D
	67	756

EPDS	BW	WW	YW	MILK	TM	CED	CEM
	-0.6	48	81	23	47	12	7

Very light birthweight Motive bull. His dam is a picture perfect 2 year old. This guy is very quiet and would be a big asset in the heifer pen or on your cows. The granddam was a very solid donor cow who left us with several daughters and a young herdsire.



Lot 503

# 503

**PM MOTIVE 4'18**

January 19, 2018 / FIRE 4F / 2031251

HF KODIAK 5R AMF CAF OHF NHF MAF DDF  
**500 LINE MOTIVE 9016**  
TLA BEAUTY 5R

EXAR DENVER 2002B AMF CAF NHF OSF DDF  
**PM POLLY 93'16**  
DUFF NE 434 POLLY 0147

SANDY BAR ADVANTAGE 43M DDF  
WILBAR RUBY 955N  
RR 7407 RAINMAKER 2154  
TERRLENE BEAUTY 35F

EXAR UPSHOT 0562B AMF CAF NHF OSF DDF  
EXAR ROYAL LASS 1067 DDF  
DUFF NEW EDITION 6108 DMF AMF CAF OHF NHF DDF  
MH POLLY 434

PERF	BW	Adj 205D
	76	724

EPDS	BW	WW	YW	MILK	TM	CED	CEM
	1.1	46	82	22	45	9	5

Motive bull out of a full sister to the 2F bull. This would be a great pair to pick up to use on large group of heifers. I used Motive on my heifers with very good success.



# 504

**PM KODIAK 7'18**

January 19, 2018 / FIRE 7F / 2031252

SANDY BAR ADVANTAGE 43M DDF  
**HF KODIAK 5R** AMF CAF OHF NHF MAF DDF  
 WILBAR RUBY 955N

ROYAL ADAPTOR DRCC 8094U  
**POPLAR MEADOWS PRINCENE 103'12**  
 CROWFOOT PRINCENE 5810R

TC ADVANTAGE DMF AMF CAF OHF NHF OSF DDC  
 SANDY BAR JEMINA 44K  
 VERMILION YELLOWSTONE DMF AMF CAF OHF NHF DDF  
 WILBAR RUBY 161J

S A V ADAPTOR 2213 DMF AMF CAF OHF NHF OSF DDF  
 ROYAL PERSEPHONE DRCC 4151P  
 O C C LEGACY 839L  
 CROWFOOT FORKS 770K

PERF	BW	Adj 205D
	87	723

EPDS	BW	WW	YW	MILK	TM	CED	CEM
	0.8	39	62	19	39	7	9

Dam is a maternal sister to our 2017-18 show cow who qualified for Agribition supreme. This is the dam's 5th bull calf in a row all born within the first cycle. 2 bulls have sold to Wineglass Cattle, 1 to Blue Goose and 1 to Peter and Karen Sirfalk. Kodiak's are sound predictable and I'm sure he will still be getting used many years from now.

**Celebrating Agriculture in the Nechako Valley**



**John Rustad** MLA for Nechako Lakes

183 First Street, Vanderhoof B.C. Phone: 250-567-6820

Email: John.Rustad.MLA@leg.bc.ca Toll free: 877-964-5650

[www.JohnRustadMLA.bc.ca](http://www.JohnRustadMLA.bc.ca)



Lot 505

# 505

**PM TEN X 11'18**

January 22, 2018 / FIRE 11F / 2031256

A A R TEN X 7008 S A DMF AMF CAF OHF NHF OSF DDF  
**C & C 10X 5031**  
 A & B BLACKBIRD 0126 DDF

HF THUNDERBIRD 146Y  
**PM TIBBIE 91'14**  
 POPLAR MEADOWS TIBBIE 3'10

MYTTY IN FOCUS DMF AMF CAF OHF NHF OSF DDF  
 A A R LADY KELTON 5551  
 SITZ UPWARD 307R DMF AMF CAF NHF OSF DDF  
 A & B BLACKBIRD 6213

HF TIGER 5T AMF CAF OHF NHF OSF DDF  
 HF ECHO 187N  
 HYLINE RIGHT TIME 338 AMF CAF OHF NHF DDF  
 MVF TIBBIE 26R

PERF	BW	Adj 205D
83	801	

EPDS	BW	WW	YW	MILK	TM	CED	CEM
1.5	59	110	21	51	8	13	

This bull I believe will have a very bright future ahead of him. He is long, smooth, hairy and carries tremendous thickness throughout. He was a member of our champion pen of 3 Angus at Farmfair who went on to capture Reserve pen overall. We lost his sire so this will be the last calf crop. Dam produced a son to CTN Ranching. I would use him on larger heifers or cows.

# 506

**PM TEN X 17'18**

January 24, 2018 / FIRE 17F / 2031260

A A R TEN X 7008 S A DMF AMF CAF OHF NHF OSF DDF  
**C & C 10X 5031**  
 A & B BLACKBIRD 0126 DDF

LD COMPLETE 319  
**PM LADY HEATHER 148'16**  
 POPLAR MDWS LADY HEATHER 12W

MYTTY IN FOCUS DMF AMF CAF OHF NHF OSF DDF  
 A A R LADY KELTON 5551  
 SITZ UPWARD 307R DMF AMF CAF NHF OSF DDF  
 A & B BLACKBIRD 6213

SUMMITCREST COMPLETE 1P55 AMF CAF OHF NHF DDF  
 G A R EXPECTATION 822 AMF  
 POPLAR MDWS FREE LANCER 4T  
 POPLAR MDWS LADY HEATHER 42R

PERF	BW	Adj 205D
82	730	

EPDS	BW	WW	YW	MILK	TM	CED	CEM
1.9	50	93	25	50	6	12	

Sired by our 10X son who left us with several top end offspring. This is his last calf crop as we lost him due to injury. Dam is a first calf heifer who is sired by our Complete bull who threw gorgeous udders and outstanding carcass traits.



Lot 506

507

PM TEN X 18'18

January 24, 2018 / FIRE 18F / 2031261

A A R TEN X 7008 S A DMF AMF CAF OHF NHF OSF DDF  
**C & C 10X 5031**  
 A & B BLACKBIRD 0126 DDF

MUSGRAVE AVIATOR DMF AMF CAF OHF NHF OSF DDF  
**PM TIBBIE 198'16**  
 HF TIBBIE 214W

MYTTY IN FOCUS DMF AMF CAF OHF NHF OSF DDF  
 A A R LADY KELTON 5551  
 SITZ UPWARD 307R DMF AMF CAF OHF NHF OSF DDF  
 A & B BLACKBIRD 6213

KOUPALS B&B IDENTITY DDF  
 MCATL FOREVER LADY 1429-138 DDF  
 HF HEMI 151T  
 HF TIBBIE 96F

PERF	BW	Adj 205D
	84	757

EPDS	BW	WW	YW	MILK	TM	CED	CEM
	2.7	57	103	21	50	2	13

Another bull out of the 10X son and again out of a first calf Aviator heifer. This bull goes back to the Hemi bull who is know to produce large calves. I'd suggestion to use on large heifers or cows.



Lot 507

508

PM KODIAK 19'18

January 24, 2018 / FIRE 19F / 2031262

SANDY BAR ADVANTAGE 43M DDF  
**HF KODIAK 5R** AMF CAF OHF NHF MAF DDF  
 WILBAR RUBY 955N

MUSGRAVE AVIATOR DMF AMF CAF OHF NHF OSF DDF  
**PM ERICA 187'16**  
 POPLAR MEADOWS ERICA 24N

TC ADVANTAGE DMF AMF CAF OHF NHF OSF DDF  
 SANDY BAR JEMINA 44K  
 VERMILION YELLOWSTONE DMF AMF CAF OHF NHF DDF  
 WILBAR RUBY 161J

KOUPALS B&B IDENTITY DDF  
 MCATL FOREVER LADY 1429-138 DDF  
 LEADTIME OF ALCAN 150  
 POPLAR MEADOWS ERICA 25K

PERF	BW	Adj 205D
	77	732

EPDS	BW	WW	YW	MILK	TM	CED	CEM
	0.5	53	91	22	49	10	17

Kodiak bull out of an Aviator first calf heifer. Light birthweight and could be definitely used in the heifer pen. Kodiak's are typically 10 days early. Granddam was one of my Dad's favorite cows. Sire Verified and i50K tested.



Lot 508

509

PM NATURAL LAW 21'18

January 25, 2018 / FIRE 21F / 2031264

S A V BISMARCK 5682 DMF AMF CAF OHF NHF OSF DDF  
**BAR-E-L NATURAL LAW 52Y**  
 BAR-E-L MAGNOLIA 143K

HF THUNDERBIRD 146Y  
**PM PRIDE 78'14**  
 KFC 205 PRIDE 9711W

G A R GRID MAKER DMF AMF CAF OHF NHF OSF DDF  
 S A V ABIGALE 0451  
 BAR-E-L MCC 365 ICON 20H  
 DOUBLE FOUR DUCHESS 12G

HF TIGER 5T AMF CAF OHF NHF OSF DDF  
 HF ECHO 187N  
 B A R EXT TRAVELER 205 DMF AMF CAF OHF NHF DDF  
 KFC 133R PRIDE 7430T

PERF	BW	Adj 205D
	94	657

EPDS	BW	WW	YW	MILK	TM	CED	CEM
	3.4	43	79	23	45	4	7

Attractive Natural Law calf. His full brother was selected by Willowdale Ranch at last years sale. He is a ¾ brother to the Executive Decision bull who was high seller last year. I would suggest this bull to someone who needs several bulls as he doesn't do well separated out on his own.



Lot 509



JOHN DEERE

# PRAIRIECOAST

equipment



**OPEN STAT HOLIDAYS  
AND EXTENDED HOURS  
1-800-663-0818**

PrairieCoast Connect is your tool for finding answers for your parts and service questions right away. Need a quick solution while you're out in the field? Give us a call and we can diagnose the problem or get the parts ordered for you over the phone.

**10 LOCATIONS TO SERVE YOU BETTER ACROSS BRITISH COLUMBIA & ALBERTA**  
**PRAIRIECOASTEQUIPMENT.COM | 1-877-553-3373**



Lot 510

# 510

## PM NATURAL LAW 28'18

January 29, 2018 / FIRE 28F / 2032488

S A V BISMARCK 5682 DMF AMF CAF OHF NHF OSF DDF  
**BAR-E-L NATURAL LAW 52Y**  
 BAR-E-L MAGNOLIA 143K

MUSGRAVE AVIATOR DMF AMF CAF OHF NHF OSF DDF  
**PM TIBBIE 60'15**  
 BOTANY ANGUS TIBBIE 25

G A R GRID MAKER DMF AMF CAF OHF NHF OSF DDF  
 S A V ABIGALE 0451  
 BAR-E-L MCC 365 ICON 20H  
 DOUBLE FOUR DUCHES 12G

KOUPALS B&B IDENTITY DDF  
 MCATL FOREVER LADY 1429-138 DDF  
 N BAR EMULATION EXT AMF CAF OHF NHF DDF  
 MVF TIBBIE 71M

PERF	BW	Adj 205D
	86	725

EPDS	BW	WW	YW	MILK	TM	CED	CEM
	2.6	46	78	20	43	4	11

One of our feature Natural Law bulls. This guy will gather lots of attention sale day. The Natural Law offspring of been creating a great deal of buzz in the Angus world. This past fall a heifer I bred sired by him was awarded Supreme Champion Female at Agribition. In the cow world that's like winning the Super Bowl. This bull is long, smooth, thick, sound and proud. Retaining 1/3 semen interest.

# 511

## PM CUTTING EDGE 29'18

January 29, 2018 / FIRE 29F / 2032489

S A V HARVESTOR 0338 DMF AMF CAF OHF NHF OSF DDF  
**S A V CUTTING EDGE 4857**  
 S A V BLACKCAP MAY 5530 CAF

MUSGRAVE AVIATOR DMF AMF CAF OHF NHF OSF DDF  
**PM LADY 94'14**  
 SOO LINE LADY 9339

S A V HERITAGE 6295 DMF AMF CAF OHF NHF OSF DDF  
 S A V EMBLYNETTE 7749 CAF  
 B C C BUSHWACKER 41-93 DMF AMF CAF OHF NHF OSF DDF  
 S A V MAY 7238 CAF DDF

KOUPALS B&B IDENTITY DDF  
 MCATL FOREVER LADY 1429-138 DDF  
 BROCKHILL PROPHECY 4P  
 JL LADY 06 112

PERF	BW	Adj 205D
	83	730

EPDS	BW	WW	YW	MILK	TM	CED	CEM
	2.9	61	106	23	54	6	12

Lighter birth SAV Cutting Edge bull. His dam is a very fertile Aviator daughter who has calved in the first cycle last 4 years. I have 2 daughters from dam retained in the herd. He will note the Granddam is my donor cow Soo Line Lady 9339. I would only use this bull on cows as the Cutting Edges typically have above average birthweights.  
**150K & Parent Verified**



Lot 511



Maternal brother to Lot 512

Lot 512

# 512

## PM FUTURE CLASSIC 30'18

January 29, 2018 / FIRE 30F / 2032490

DAMERON FIRST CLASS  
**COLBURN PRIMO 5153** OSF  
SILVEIRAS SARAS DREAM 1339

EXG RS FIRST RATE S903 R3  
DAMERON NORTHERN MISS 3114 AMF DDF  
SILVEIRAS STYLE 9303 DMF AMF CAF NHF OSF DDF  
EXG SARAS DREAM S609 R3 CAF DDF

HF THUNDERBIRD 146Y  
**PM BLOSSOM 124'13**  
POPLAR MEADOWS BLOSSOM 5'10

HF TIGER 5T AMF CAF OHF NHF OSF DDF  
HF ECHO 187N  
HF TIGER 5T AMF CAF OHF NHF OSF DDF  
REMITALL BLOSSOM 253P

PERF	BW	Adj 205D
	90	780

EPDS	BW	WW	YW	MILK	TM	CED	CEM
	2.6	47	73	21	45	7	8

This guy has been an eye catcher since birth. The only Primo in the sale offering. He is a maternal brother to my high selling bull from last year Executive Decision who sold for \$33,000 to W Sunrise Angus. Dam has also had a bull selected by the Huxley Colony. He was also part of the Champion pen of 3 Angus at Farmfair. This bull has a gorgeous front, thick made, bone and hair to die for. I think this bull is an unique breeding piece and could be a "Future Classic" i50K tested Parent Verified Terms to be announced.

# 513

## PM AVIATOR 35'18

February 01, 2018 / FIRE 35F / 2032494

KOUPALS B&B IDENTITY DDF  
**MUSGRAVE AVIATOR** DMF AMF CAF OHF NHF OSF DDF  
MCATL FOREVER LADY 1429-138 DDF

SITZ UPWARD 307R DMF AMF CAF NHF OSF DDF  
B&B ERICA 605 OHF DDF  
S A V FINAL ANSWER 0035 DMF AMF CAF OHF NHF OSF DDF  
ALC FOREVER LADY R02S

SOO LINE THOR 108S  
**PM TIBBIE 35'14**  
HF TIBBIE 47U

BAR-E-L THOR 6T  
SOO LINE LADY 8058  
HF DONE RIGHT 125R  
HF TIBBIE 87S

PERF	BW	Adj 205D
	80	832

EPDS	BW	WW	YW	MILK	TM	CED	CEM
	-0.2	56	99	28	56	10	14

Low birth Big growth Aviator son with tremendous EPD profile. He had a weaning ratio of 117 and ranked 3/39 in his pasture. Dam recently had her fourth calf all coming in the first cycle of calving. Dam is attractive young cow with strong udder and foot quality. I have a daughter retained and a son sold to Kim Rempel. Breeders take a look at him for your heifer pen, I have done an i50K test on him and just waiting for results.

**Sire Verified**



Lot 513



Lot 514

# 514

**PM AVIATOR 42'18**

February 01, 2018 / FIRE 42F / 2032500

KOUPALS B&B IDENTITY DDF  
**MUSGRAVE AVIATOR** DMF AMF CAF OHF NHF OSF DDF  
 MCATL FOREVER LADY 1429-138 DDF

SITZ UPWARD 307R DMF AMF CAF NHF OSF DDF  
 B&B ERICA 605 OHF DDF  
 S A V FINAL ANSWER 0035 DMF AMF CAF OHF NHF OSF DDF  
 ALC FOREVER LADY R02S

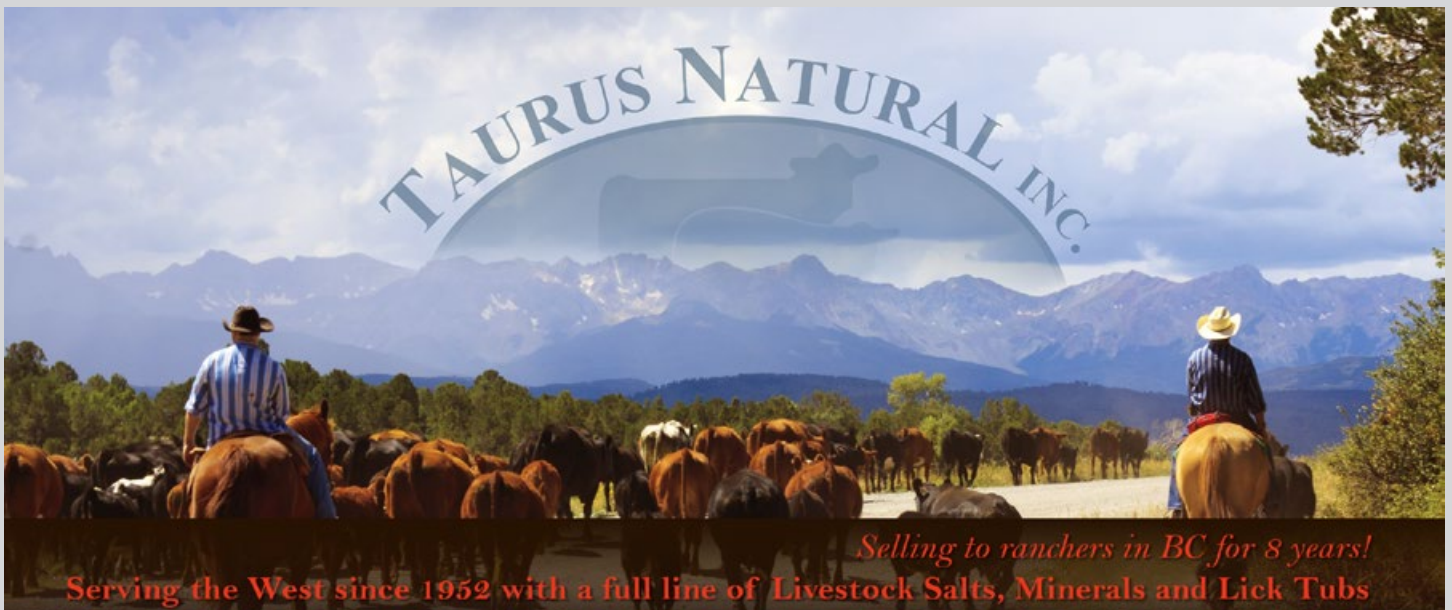
DUFF TRIPLE CROWN 262  
**PM ECHO 152'16**  
 HF ECHO 303T

DUFF PRIMO 944 AMF CAF NHF OSF DDF  
 SA 680R RANCHER 8183 075  
 DURALTA 429M REALIST 77R  
 HF ECHO 207N

PERF	BW	Adj 205D
	73	675

EPDS	BW	WW	YW	MILK	TM	CED	CEM
	1	41	75	22	43	5	12

Aviator son out of a Duff Triple Crown first calf heifer. Smaller framed bull that should work on larger heifers or cows. Comes from the same cow family as the Supreme Cow last fall at Agribition.



**ROSS DAVIDSON, BC MARKETING REP**

Box 1563, Fort St James BC, V0J 1P0

Office: 250-996-6878 | Cell: 250-961-7637

Office/Nutritionist: 1-800-631-7382

Email: ross.davidson.rd@gmail.com | Web: www.taurusnatural.com



Lot 515

# 515

## PM BANK NOTE 47'18

February 02, 2018 / FIRE 47F / 2032502

CONNEALY EARNAN 076E AMF CAF OHF NHF OSF DDF  
**BROOKING BANK NOTE 4040**  
E A ROSE 918

SOO LINE MOTIVE 9016  
**SOO LINE CLEO 2039**  
SOO LINE CLEO 9187

CONNEALY CONSENSUS DDF  
BRAZILA OF CONANGA 3991 839A CAF  
S A V FINAL ANSWER 0035 DMF AMF CAF OHF NHF OSF DDF  
E A ROSE 738  
HF KODIAK 5R AMF CAF OHF NHF MAF DDF  
TLA BEAUTY 5R  
SOO LINE YELLOWSTONE 6344  
KBJ CLEO 685M

PERF	BW	Adj 205D
	87	717

EPDS	BW	WW	YW	MILK	TM	CED	CEM
	1.4	53	92	19	46	7	6

One of only a couple Bank Note bulls. The dam is a no miss Soo Line Motive daughter who has produced a daughter to Russell McLarry, bull to LA Ranch, bull to KFC Farms and a daughter retained. This bull has tons of eye appeal and I believe would do a great job in a purebred herd or for any rancher wanted to beef up their cows.

# 516

## PM CUT TO THE CHASE 57'18

February 02, 2018 / FIRE 57F / 2031651

S A V HARVESTOR 0338 DMF AMF CAF OHF NHF OSF DDF  
**S A V CUTTING EDGE 4857** DMF AMF CAF OHF NHF OSF DDF  
S A V BLACKCAP MAY 5530 CAF

SITZ UPWARD 307R DMF AMF CAF NHF OSF DDF  
**POPLAR MEADOWS HEROINE 13'10**  
MVF HEROINE 19P

S A V HERITAGE 6295 DMF AMF CAF OHF NHF OSF DDF  
S A V EMBLYNETTE 7749 CAF  
B C C BUSHWACKER 41-93 DMF AMF CAF OHF NHF OSF DDF  
S A V MAY 7238 CAF DDF

CONNEALY ONWARD DMF AMF CAF NHF OSF DDF  
SITZ HENRIETTA PRIDE 81M  
NICHOLS EXTRA H6 DMF AMF CAF OHF NHF OSF DDF  
LENLOOK HEROINE 36M

PERF	BW	Adj 205D
	94	769

EPDS	BW	WW	YW	MILK	TM	CED	CEM
	4.2	59	102	30	60	3	7



Dam of Lot 516

A Cutting Edge bull out of a beautiful Upward cow who has done a great job for us. She has produced sons to Blue Goose Cattle, Johnson Farms and Jon&CyaSolecki. I50K tested and Parent Verified



Lot 516

517

**PM CUTTING EDGE 58'18**

February 03, 2018 / FIRE 58F / 2031652

S A V HARVESTOR 0338 DMF AMF CAF OHF NHF OSF DDF  
**S A V CUTTING EDGE 4857** DMF AMF CAF OHF NHF OSF DDF  
 S A V BLACKCAP MAY 5530 CAF

SOUTHLAND JIMMY RAY 170N  
**SOUTHLAND JEWEL 275T**  
 JUSTAMERE 253 JEWEL 104R

S A V HERITAGE 6295 DMF AMF CAF OHF NHF OSF DDF  
 S A V EMBLYNETTE 7749 CAF  
 B C C BUSHWACKER 41-93 DMF AMF CAF OHF NHF OSF DDF  
 S A V MAY 7238 CAF DDF  
 SANDY BAR BRAVE HEART 86K  
 SOUTHLAND DIXIE 14K  
 EXAR MASTER 253  
 BRANDEIS JESTRESS 13K

PERF	BW	Adj 205D
	92	738

EPDS	BW	WW	YW	MILK	TM	CED	CEM
	5.1	55	93	19	47	-3	6

Cutting Edge bull out of a past multiple Supreme winning cow Southland Jewel 275T who we purchased out of the Southland dispersal sale. Maternal brothers have sold to DMS Feedlot, Jim Haughton and to K-Cow.



Dam of Lot 517

518

**PM BREAKOUT 68'18**

February 05, 2018 / FIRE 68F / 2031658

AVF BREAKOUT 5409  
**MAY-WAY BREAKOUT 1310**  
 MAY-WAY LADY BANDO 086

GDAR GAME DAY 449 DMF AMF CAF OHF NHF OSF DDF  
**PM BLOSSOM 2'15**  
 PM BLOSSOM 9'13

S A V BISMARCK 5682 DMF AMF CAF OHF NHF OSF DDF  
 AVF SARA 0045  
 MAY-WAY 112 819  
 MAY-WAY LADY BANDO 745

BOYD NEW DAY 8005 DMF AMF CAF OHF NHF OSF DDF  
 G D A R MISS WIX 474  
 SITZ UPWARD 307R DMF AMF CAF OHF NHF OSF DDF  
 POPLAR MEADOWS BLOSSOM 10'11

PERF	BW	Adj 205D
	87	715

EPDS	BW	WW	YW	MILK	TM	CED	CEM
	2.3	56	102	29	57	4	6

Breakout bull out of a good second calver. Dam's first bull sold to the Solecki family at last years sale. Breakout's have impeccable foot quality and his first daughters have good udders and appear to be doing a good job on their calves.



Lot 518

519

**PM THUNDERSTRUCK 70'18**

February 06, 2018 / FIRE 70F / 2031660

HF THUNDERBIRD 146Y  
**PM THUNDERSTRUCK 22'13**  
 MVF ROSEBUD 313U

MUSGRAVE STIMULUS 1052-945 DDF  
**PM ANNIE K 154'15**  
 PM ANNIE K 126'13

HF TIGER 5T AMF CAF OHF NHF OSF DDF  
 HF ECHO 187N  
 WESTERN WIDESPREAD 1L  
 MVF ROSEBUD 906N

CONNELLY STIMULUS 8419 DMF DMF AMF CAF OHF NHF OSF DDF  
 M A MISS EMULOUS 945-192 DDF  
 ROYAL ADAPTOR DRCC 8094U  
 HF ANNIE K 4X

PERF	BW	Adj 205D
	85	766

EPDS	BW	WW	YW	MILK	TM	CED	CEM
	1.8	43	71	23	45	6	10

Thunderstuck bull out of a young Stimulus cow. We lost the Stimulus bull after only a couple of years. His daughters make very nice cows, they are moderate, good footed and small tidy udders. This calf is a real show off and caught your attention on pasture.



Lot 519



Grand Dam of Lot 520

# 520

**PM NATURAL LAW 71'18**

February 06, 2018 / FIRE 71F / 2031661

S A V BISMARCK 5682 DMF AMF CAF OHF NHF OSF DDF  
**BAR-E-L NATURAL LAW 52Y**  
 BAR-E-L MAGNOLIA 143K

SITZ UPWARD 307R DMF AMF CAF NHF OSF DDF  
**C & C QUEEN 5029**  
 A & B QUEEN 9127 DMF

G A R GRID MAKER DMF AMF CAF OHF NHF OSF DDF  
 S A V ABIGALE 0451  
 BAR-E-L MCC 365 ICON 20H  
 DOUBLE FOUR DUCHESS 12G

CONNELLY ONWARD DMF AMF CAF NHF OSF DDF  
 SITZ HENRIETTA PRIDE 81M  
 O C C PROTOTYPE 847P DMF AMF CAF OHF NHF OSF DDF  
 A & B QUEEN 1220

PERF	BW	Adj 205D
	84	700

EPDS	BW	WW	YW	MILK	TM	CED	CEM
	2	49	90	22	47		

Moderate birthweight Natural Law son out of a second calf cow. Dam was brought up to Canada as a calf along side her dam. Dam's first calf is in our bred heifer pen.



Lot 521

# 521

**PM TIGER 79'18**

February 07, 2018 / FIRE 79F / 2031665

HF KODIAK 5R AMF CAF OHF NHF MAF DDF  
**HF TIGER 5T** AMF CAF OHF NHF OSF DDF  
 HF ECHO 84R

PM AVIATOR 8'14  
**DRAGON VIEW TIBBIE 3D**  
 DRAGON VIEW TIBBIE 2W

SANDY BAR ADVANTAGE 43M DDF  
 WILBAR RUBY 955N  
 TC FREEDOM 104 DMF AMF CAF OHF NHF OSF DDF  
 HFDF ECHO 6N

MUSGRAVE AVIATOR DMF AMF CAF OHF NHF OSF DDF  
 POPLAR MEADOWS BLACKCAP 62'12  
 DCWW FLEX  
 N.B.A. TIBBIE 15T

PERF	BW	Adj 205D
	81	710

EPDS	BW	WW	YW	MILK	TM	CED	CEM
	1.6	50	91	26	51	5	7

Really good Tiger son out of a first calf heifer we purchased from Trent and Robyn of Dragon View Angus. His dam is out of an Aviator son we sold them a few years ago. You will appreciate the thickness and easy doing qualities of this bull.



Lot 522

# 522

**PM NATURAL LAW 83'18**

February 08, 2018 / FIRE 83F / 2032204

S A V BISMARCK 5682 DMF AMF CAF OHF NHF OSF DDF  
**BAR-E-L NATURAL LAW 52Y**  
 BAR-E-L MAGNOLIA 143K

TAFIKA ABERDEEN 31Z  
**POPLAR MEADOWS LADY HEATHER 2C**  
 POPLAR MDWS LADY HEATHER 42R

G A R GRID MAKER DMF AMF CAF OHF NHF OSF DDF  
 S A V ABIGALE 0451  
 BAR-E-L MCC 365 ICON 20H  
 DOUBLE FOUR DUCHESS 12G

TC ABERDEEN 759 DMF AMF CAF OHF NHF OSF DDF  
 TAFIKA 114P BLACK LADY 46X  
 LEADTIME OF ALCAN 150  
 POPLAR MDWS LADY HEATHER 23H

PERF	BW	Adj 205D
	84	676

EPDS	BW	WW	YW	MILK	TM	CED	CEM
	2.5	44	78	23	45	5	10

Moderate birthweight Natural Law out of a second calf cow. Dam is from my Mom and Dad's last calf crop and is a daughter of a cow we affectionally call Star who is also going strong for us at 14 years of age. This cows first bull sold last year to Douglas Lake Cattle.

523

## PM CUTTING EDGE 85'18

February 09, 2018 / FIRE 85F / 2032206

S A V HARVESTOR 0338 DMF AMF CAF OHF NHF OSF DDF  
**S A V CUTTING EDGE 4857** DMF AMF CAF OHF NHF OSF DDF  
 S A V BLACKCAP MAY 5530 CAF

GDAR GAME DAY 449 DMF AMF CAF OHF NHF OSF DDF  
**MVF PRIDE 88X**  
 MVF PRIDE 87U

S A V HERITAGE 6295 DMF AMF CAF OHF NHF OSF DDF  
 S A V EMBLYNETTE 7749 CAF  
 B C C BUSHWACKER 41-93 DMF AMF CAF OHF NHF OSF DDF  
 S A V MAY 7238 CAF DDF  
 BOYD NEW DAY 8005 DMF AMF CAF OHF NHF OSF DDF  
 G D A R MISS WIX 474  
 MVF VRD DATELINE 913P AMF CAF OHF NHF DDF  
 HCA MY PRIDE 18J

PERF	BW	Adj 205D
	83	738

EPDS	BW	WW	YW	MILK	TM	CED	CEM
	3.2	62	104	21	52	2	6

A light birthweight Cutting Edge who I would still suggest to leave him on cows. Dam is attractive made Game Day cow who has produced sons to Cody Herr, Blue Goose Cattle, Doug Brophy and one of the high selling breds from our Shades of Autumn sale to Wilbar Cattle Co.



Lot 523

524

## PM BREAKOUT 86'18

February 09, 2018 / FIRE 86F / 2032207

AVF BREAKOUT 5409  
**MAY-WAY BREAKOUT 1310**  
 MAY-WAY LADY BANDO 086

POPLAR MEADOWS FREEDOM 2'08  
**POPLAR MEADOWS TIBBIE 16'12**  
 HF TIBBIE77W

S A V BISMARCK 5682 DMF AMF CAF OHF NHF OSF DDF  
 AVF SARA 0045  
 MAY-WAY 112 819  
 MAY-WAY LADY BANDO 745

TC FREEDOM 104 DMF AMF CAF OHF NHF OSF DDF  
 MVF TIBBIE 305R  
 HF KODIAK 5R AMF CAF OHF NHF MAF DDF  
 HF TIBBIE 66L

PERF	BW	Adj 205D
	93	772

EPDS	BW	WW	YW	MILK	TM	CED	CEM
	3.9	46	73	21	44	-2	7



Maternal sister to Lot 524

Powerful Breakout bull. His dam has had 2 daughters selected by Youngdale Angus and Ryan Currie. This bull has lots of length and thickness.



Lot 524

525

## PM BREAKOUT 87'18

February 09, 2018 / FIRE 87F / 2042446

AVF BREAKOUT 5409  
**MAY-WAY BREAKOUT 1310**  
 MAY-WAY LADY BANDO 086

S A V NET WORTH 4200 DMF AMF CAF OHF NHF OSF DDF  
**BUCK LAKE MISS WORTH 597Z**  
 BLEVINS LASS DESIGN 5422 DDF

S A V BISMARCK 5682 DMF AMF CAF OHF NHF OSF DDF  
 AVF SARA 0045  
 MAY-WAY 112 819  
 MAY-WAY LADY BANDO 745

S A V 8180 TRAVELER 004 DMF AMF CAF OHF NHF OSF DDF  
 S A V MAY 2410  
 G A R PREDESTINED DMF AMF CAF OHF NHF OSF DDF  
 BLEVINS LASS THREAT 8005

PERF	BW	Adj 205D
		728

EPDS	BW	WW	YW	MILK	TM	CED	CEM
	3.6	55	101	31	59	2.5	6.5

One of the best Breakout bulls. Dam is a big volume cow who had a daughter selected by Jim & Louise Feragen. Long sided and big hipped.



Lot 525



Lot 526

# 526

**PM FINAL CHAPTER 88'18**

February 10, 2018 / FIRE 88F / 2032208

S A V HARVESTOR 0338 DMF AMF CAF OHF NHF OSF DDF  
**EF TITAN 545**  
 EXAR BLACKBIRD 5877

HF TIGER 5T AMF CAF OHF NHF OSF DDF  
**POPLAR MEADOWS BLOSSOM 5'10**  
 REMITALL BLOSSOM 253P

S A V HERITAGE 6295 DMF AMF CAF OHF NHF OSF DDF  
 S A V EMBLYNETTE 7749 CAF  
 SCHURRTOP MC 2500 DMF AMF CAF OHF OSF DDF  
 EXAR BLACKBIRD 4448 AMF NHF

HF KODIAK 5R AMF CAF OHF NHF MAF DDF  
 HF ECHO 84R  
 REMITALL MONSOON 37M  
 REMITALL BLOSSOM 5M

PERF	BW	Adj 205D
	88	824

EPDS	BW	WW	YW	MILK	TM	CED	CEM
	3.5	56	103	33	61	4	7

The 3<sup>rd</sup> member of our Champion pen of 3 bulls at Farmfair. His sire is EF Titan who won Agribition Supreme in 2016. This bulls dam was a donor cow for us as well as a show cow for a few years. We unfortunately lost in this past summer hence his name "Final Chapter" This bull is long spined and smooth made and lots of performance. He was Champion Angus bull calf this past summer at the IPE.  
**i50K & Parent Verified**

# 527

**PM AVIATOR 89'18**

February 10, 2018 / FIRE 89F / 2032209

KOUPALS B&B IDENTITY DDF  
**MUSGRAVE AVIATOR** DMF AMF CAF OHF NHF OSF DDF  
 MCATL FOREVER LADY 1429-138 DDF

PEAK DOT UNANIMOUS 745B  
**PM BLOSSOM 156'16**  
 PM BLOSSOM 54'14


SITZ UPWARD 307R DMF AMF CAF NHF OSF DDF  
 B&B ERICA 605 OHF DDF  
 S A V FINAL ANSWER 0035 DMF AMF CAF OHF NHF OSF DDF  
 ALC FOREVER LADY R02S


VISION UNANIMOUS 1418 DMF AMF CAF NHF DDF  
 PEAK DOT HEATHER 775Y  
 MUSGRAVE STIMULUS 1052-945 DDF  
 POPLAR MEADOWS BLOSSOM 10'11

PERF	BW	Adj 205D
	72	727

EPDS	BW	WW	YW	MILK	TM	CED	CEM
	-1.2	49	88	25	50	9	12

Calving ease Aviator out of a first calf heifer. The Aviator bull does so many things right. Calves come small they get up and go and grow into calves with plenty of muscle shape. The Aviator daughters are very attentive mothers and are dam's to several of our top calves year after year.





**More and more firms just calculate numbers.  
 We help calculate your next move.**


**MNP Understands Agriculture.**  
 In fact, it is both a specialty and a passion. Our business consultants, financial advisors and professional agrologists are intimately familiar with all aspects of the beef industry. Which means not only can we help you make sense of the now, but we can also help show you what's next.

Contact Andrew Adams, CPA, CA, CFP, at 250.596.4900 or [andrew.adams@mnp.ca](mailto:andrew.adams@mnp.ca)

We specialize, you capitalize. Visit [MNP.ca](http://MNP.ca) to learn more.

ACCOUNTING > CONSULTING > TAX

[MNP.ca](http://MNP.ca)

Wherever business takes you. 

528

## PM JUSTIFIED 90'18

February 10, 2018 / FIRE 90F / 2032210

SANKEYS LAZER 609 OF 6N DMF AMF  
**SANKEYS JUSTIFIED 101**  
 SANKEYS ERICA 525

MUSGRAVE STIMULUS 1052-945 DDF  
**PM BLOSSOM 54'14**  
 POPLAR MEADOWS BLOSSOM 10'11

EXAR LUTTON 1831 DMF AMF CAF OHF NHF DDF  
 ROTH ELDORNE 1195 DMF  
 DAJS ALL STAR M243 OHF  
 EXARA ERICA 6338

CONNEALY STIMULUS 8419 DMF DMF AMF CAF OHF NHF OSF DDF  
 M A MISS EMULOUS 945-192 DDF  
 HF TIGER 5T AMF CAF OHF NHF OSF DDF  
 POPLAR MEADOWS BLOSSOM 5'08

PERE	BW	Adj 205D
	89	781

EPDS	BW	WW	YW	MILK	TM	CED	CEM
	2.5	59	101	22	52	3	6

We have used a few straws of the Sankeys Justified bull and have been happy with the calves. They are thick made with lots of scrotal and masculinity. The dam is out of the Musgrave Stimulus bull who threw light birthweights, beautiful udders and superb foot structure. Dam is also the granddam of the 89F bull.



Lot 528

529

## PM BLUE CHIP 93'18

February 10, 2018 / FIRE 93F / 2032213

DAMERON FIRST CLASS  
**EXAR BLUE CHIP 1877B** AMF CAF NHF OSF DDF  
 GREENS PRINCESS 1012 AMF CAF NHF DDF

S A V HEAVY HITTER 6347 DMF AMF CAF OHF NHF  
**BELVIN LADY BLOSSOM 2'09**  
 BELVIN LADY BLOSSOM 22'02

EXG RS FIRST RATE S903 R3  
 DAMERON NORTHERN MISS 3114 AMF DDF  
 GREENS PREMIUM 7578 CAF  
 GREENS PRINCESS 7418 OHF

S A V 8180 TRAVELER 004 DMF DMF AMF CAF OHF NHF OSF DDF  
 S A V BESSIE HEIRESS 1184 CAC  
 O G L BATTLE CRY 427 128 DDF  
 BELVIN LADY BLOSSOM 47'97

PERE	BW	Adj 205D
	84	663

EPDS	BW	WW	YW	MILK	TM	CED	CEM
	2.7	47	75	17	41	3	11

This attractive bull is out of Monty's no miss cow Belvin Lady Blossom 2'09. The Blossom cow has 2 herd bulls working for us as well we have sold sons to Doug Brophy and Blue Goose Cattle and a daughter is retained in the herd. The Blue Chip sire has definitely left his mark in the US show world. Purebred guys take a look as he is outcross genetics for most people.  
**Sire Verified**



Lot 529

530

## PM NATURAL LAW 95'18

February 10, 2018 / FIRE 95F / 2032215

S A V BISMARCK 5682 DMF AMF CAF OHF NHF OSF DDF  
**BAR-E-L NATURAL LAW 52Y**  
 BAR-E-L MAGNOLIA 143K

MUSGRAVE AVIATOR DMF AMF CAF OHF NHF OSF DDF  
**PM PEARL 53'15**  
 CROWFOOT PEARL 8006U

G A R GRID MAKER DMF AMF CAF OHF NHF OSF DDF  
 S A V ABIGALE 0451  
 BAR-E-L MCC 365 ICON 20H  
 DOUBLE FOUR DUCHESS 12G

KOUPALS B&B IDENTITY DDF  
 MCATL FOREVER LADY 1429-138 DDF  
 CROWFOOT JOKER 61725  
 CROWFOOT L PEARL 2648M

PERE	BW	Adj 205D
	96	793

EPDS	BW	WW	YW	MILK	TM	CED	CEM
	4.1	50	87	23	48	1	10

Soggy made Natural Law out of a gorgeous young Aviator daughter. The cow side goes back to one of our donor cows Crowfoot Pearl 8006U. This bull has lots bone, hair and rib shape. He had a weaning weight of almost 800 lbs. Will throw tremendous replacement females.



Granddam of Lot 530



Dam of Lot 531

# 531

**PM BREAKOUT 97'18**

February 10, 2018 / FIRE 97F / 2032217

AVF BREAKOUT 5409  
**MAY-WAY BREAKOUT 1310**  
MAY-WAY LADY BANDO 086

CONNEALY FREIGHTLINER DMF AMF CAF NHF OSF DDF  
**KFC 7549 VALLEY 1307Y**  
KFC 205 VALLEY 9703W

S A V BISMARCK 5682 DMF AMF CAF NHF OSF DDF  
AVF SARA 0045  
MAY-WAY 112 819  
MAY-WAY LADY BANDO 745

BON VIEW BANDO 598 DMF DMF AMF CAF NHF OSF DDF  
JOANA ERICA OF CONANGA  
B A R EXT TRAVELER 205 DMF AMF CAF NHF OSF DDF  
KFC 5789R VALLEY 7388T

PERF	BW	Adj 205D
	90	751

EPDS	BW	WW	YW	MILK	TM	CED	CEM
	2.6	52	94	31	57	4	7

Breakout cow bull. Dam is very productive with a daughter selling to LCL Angus and sons to Terry Johnson and Kimmie Konnections. Lots of hair bone and stands on strong set of feet and legs.



Lot 532

# 532

**PM THUNDERSTRUCK 98'18**

February 10, 2018 / FIRE 98F / 2032218

HF THUNDERBIRD 146Y  
**PM THUNDERSTRUCK 22'13**  
MVF ROSEBUD 313U

CONNEALY COMPLETE 8454 AMF AMF NHF  
**SIX MILE ANNIE K 570A**  
SIX MILE ANNIE K 917W

HF TIGER 5T AMF CAF NHF OSF DDF  
HF ECHO 187N  
WESTERN WIDESPREAD 1L  
MVF ROSEBUD 906N

SUMMITCREST COMPLETE 1P55 AMF CAF NHF OSF DDF  
BLACK BEARA OF CONANGA 8454 DDF  
S A V FINAL ANSWER 0035 DMF AMF CAF NHF OSF DDF  
SIX MILE ANNIE K 725T

PERF	BW	Adj 205D
	98	780

EPDS	BW	WW	YW	MILK	TM	CED	CEM
	3.4	49	81	25	50	0	6

Sire by our high selling bull from 2014 Thunderstruck. A maternal brother was selected last year by Kimmie Konnections. This bull in my opinion would produce a group of outstanding steers and replacement females.



Lot 533

# 533

**PM AVIATOR 102'18**

February 11, 2018 / FIRE 102F / 2032220

KOUPALS B&B IDENTITY DDF  
**MUSGRAVE AVIATOR** DMF AMF CAF NHF OSF DDF  
MCATL FOREVER LADY 1429-138 DDF

HF THUNDERBIRD 146Y  
**PM PRINCESS 134'14**  
MVF PRINCESS 72X

SITZ UPWARD 307R DMF AMF CAF NHF OSF DDF  
B&B ERICA 605 DMF DDF  
S A V FINAL ANSWER 0035 DMF AMF CAF NHF OSF DDF  
ALC FOREVER LADY R02S

HF TIGER 5T AMF CAF NHF OSF DDF  
HF ECHO 187N  
GDAR GAME DAY 449 DMF AMF CAF NHF OSF DDF  
MVF PRINCESS 197U

PERF	BW	Adj 205D
	98	784

EPDS	BW	WW	YW	MILK	TM	CED	CEM
	3.3	58	106	25	54	1	7

Fancy Aviator bull out of a bigger framed Thunderbird daughter. This is the largest Aviator ever born at our ranch. The cow always seems to produce a big fat calf with no problems. This guy should work well on a group of cows and produce the type of steers the feedlots love to feed and daughters for the rancher wanting to improve their herd.

534

## PM KODIAK 107'18

February 12, 2018 / FIRE 107F / 2032689

SANDY BAR ADVANTAGE 43M DDF  
**HF KODIAK 5R** AMF CAF OHF NHF MAF DDF  
 WILBAR RUBY 955N

TC ADVANTAGE DMF AMF CAF OHF NHF OSF DDF  
 SANDY BAR JEMINA 44K  
 VERMILION YELLOWSTONE DMF AMF CAF OHF NHF DDF  
 WILBAR RUBY 161J

EXAR RITO W0305  
**A & B FOREVER LADY 1429** DDF  
 A & B FOREVER LADY 5123

RITO 6EM3 OF 4L1 EMBLazon DMF AMF CAF OHF NHF OSF DDF  
 G A R 1407 NEW DESIGN 813  
 BR MIDLAND DMF AMF CAF OHF NHF DDF  
 A & B FOREVER LADY 2171

PERC	BW	Adj 205D
	95	826

EPDS	BW	WW	YW	MILK	TM	CED	CEM
	1.7	57	91	20	49	10.5	8

Bigger birthweight Kodiak son out of a young cow we imported from Oklahoma. His 205 day weight is over 800 lbs and he indexed 113. If you need to add some pounds on your calves this guy should get the job done.



Lot 534

535

## PM AVAITOR 112'18

February 13, 2018 / FIRE 112F / 2032692

KOUPALS B&B IDENTITY DDF  
**MUSGRAVE AVIATOR** DMF AMF CAF OHF NHF OSF DDF  
 MCATL FOREVER LADY 1429-138 DDF

SITZ UPWARD 307R DMF AMF CAF NHF OSF DDF  
 B&B ERICA 605 OHF DDF  
 S A V FINAL ANSWER 0035 DMF AMF CAF OHF NHF OSF DDF  
 ALC FOREVER LADY R025

BAR-E-L NATURAL LAW 52Y  
**PM TIBBIE 140'15**  
 N.B.A. 25 TIBBIE 7W

S A V BISMARCK 5682 DMF AMF CAF OHF NHF OSF DDF  
 BAR-E-L MAGNOLIA 143K  
 HF HEMI 151T  
 BOTANY ANGUS TIBBIE 25

PERC	BW	Adj 205D
	88	744

EPDS	BW	WW	YW	MILK	TM	CED	CEM
	2.5	58	100	23	52	1	12

Aviator bull out of a Natural Law 3 year old. Lots of maternal power in this bull. He is long sided and had a 205 day weight of 744 lbs. Strong weaning and yearling EPD's.



Lot 535

536

## PM AVIATOR 123'18

February 15, 2018 / TCB 123F / 2032700

KOUPALS B&B IDENTITY DDF  
**MUSGRAVE AVIATOR** DMF AMF CAF OHF NHF OSF DDF  
 MCATL FOREVER LADY 1429-138 DDF

SITZ UPWARD 307R DMF AMF CAF NHF OSF DDF  
 B&B ERICA 605 OHF DDF  
 S A V FINAL ANSWER 0035 DMF AMF CAF OHF NHF OSF DDF  
 ALC FOREVER LADY R025

CONNEALY CONSENSUS 7229 DMF AMF CAF OHF NHF OSF DDF  
**POPLAR MEADOWS BLOSSOM 42'13**  
 POPLAR MEADOWS BLOSSOM 12'11

CONNEALY CONSENSUS DDF  
 BLUE LILLY OF CONANGA 16 CAF  
 HF TIGER 5T AMF CAF OHF NHF OSF DDF  
 POPLAR MEADOWS BLOSSOM 13'09

PERC	BW	Adj 205D
	76	747

EPDS	BW	WW	YW	MILK	TM	CED	CEM
	-1.3	50	85	29	54	13	14

This would be Taylor's bull. He started off small and has really taken off after that. As you all know Taylor has recently become a Dad and his priorities have changed. He no longer needs bull money for truck parts, he now needs it to buy diapers!! This is a very good bull and would work well in a purebred as well as a commercial heifer pen.



Lot 536



Lot 537

# 537

**PM TITAN 127'18**

February 15, 2018 / FIRE 127F / 2046509

S A V HARVESTOR 0338 DMF AMF CAF OHF NHF OSF DDF  
**EF TITAN 545**  
 EXAR BLACKBIRD 5877

GAMBLES HOT ROD  
**NORTHLINE SAVING GRACE 776T**  
 NORTHLINE SAVING GRACE 76L

S A V HERITAGE 6295 DMF AMF CAF OHF NHF OSF DDF  
 S A V EMBLYNETTE 7749 CAF  
 SCHURRTOP MC 2500 DMF AMF CAF OHF OSF DDF  
 EXAR BLACKBIRD 4448 AMF NHF

FAMOUS 7001 AMF  
 CHAMPION HILL LADY 703  
 NOBLE ACRES CASANOVA 3J  
 KINTYRE LADY 76D

PERF	BW	Adj 205D
85	757	

EPDS	BW	WW	YW	MILK	TM	CED	CEM
	3.3	64	104	21	53	-2	1

This bull is part of a veryhigh quality group of flush calves from the Agribition champion EF Titan and the Northline Saving Grace cow. A full sister was shown successful last fall and was my high selling heifer calf to Enright Farms from our Shades of Autumn sale. I ended up taking his picture as we didn't have him cleaned up prior to Grant leaving. Take a good hard look at this guy. i50K tested and parent Verified



[www.westlineford.com](http://www.westlineford.com)



**Stop in at Westline and check out the 2019 models arriving!**

**250-567-4781**



Lot 538

# 538

## PM NATURAL LAW 128'18

February 15, 2018 / FIRE 128F / 2032730

S A V BISMARCK 5682 DMF AMF CAF OHF NHF OSF DDF  
**BAR-E-L NATURAL LAW 52Y**  
 BAR-E-L MAGNOLIA 143K

CROWFOOT EQUATION 5793R  
**XO CROWFOOT LASS TRADER 216Z**  
 XO CROWFOOT LASS TRADER 844U

G A R GRID MAKER DMF AMF CAF OHF NHF OSF DDF  
 S A V ABIGALE 0451  
 BAR-E-L MCC 365 ICON 20H  
 DOUBLE FOUR DUCHESS 12G

O C C LEGACY 839L  
 CROWFOOT FORKS 755K  
 O C C MOONSHINE 740M  
 CROWFOOT LASS TRADER 6016S

PERF	BW	Adj 205D
	98	737

EPDS	BW	WW	YW	MILK	TM	CED	CEM
	2.8	45	83	22	45	4	7

If I was picking today this would be my favourite bull. I love his presence, blend of shoulder into neck, length, foot structure, hair and hip. Probably his greatest attribute is his beautiful dam who was one of the high selling bred heifers in the Crowfoot dispersal. We sold a daughter out of her in our first Shades of Autumn sale to Harvie Crest. Natural Law has become one of the most sought after bulls in Canada. We recently made the decision to put Natural Law down as he hurt himself in August and we couldn't get him healed up. I think this bull has a big future ahead of him. Terms to be announced.

# 539

## PM BANK NOTE 130'18

February 16, 2018 / FIRE 130F / 2032731

CONNEALY EARNAN 076E AMF CAF OHF NHF OSF DDF  
**BROOKING BANK NOTE 4040**  
 E A ROSE 918

HF HEMI 151T  
**HF TIBBIE 214W**  
 HF TIBBIE 96F

CONNEALY CONSENSUS DDF  
 BRAZILA OF CONANGA 3991 839A CAF  
 S A V FINAL ANSWER 0035 DMF AMF CAF OHF NHF OSF DDF  
 E A ROSE 738

S A V 004 PREDOMINANT 4438 DMF AMF CAF OHF NHF OSF DDF  
 HF TIBBIE 100M  
 HF WALK-ON 14C  
 HF TIBBIE 50D

PERF	BW	Adj 205D
	82	675

EPDS	BW	WW	YW	MILK	TM	CED	CEM
	3.1	52	86	14	40	0	6

The second of the Bank Note bull calves. His HF Hemi dam has been a consistent producer for us with 2 retained daughters, daughter to Ryan Currie and sons to Blue Goose, Alexis Creek and 1 selling in our 2 year old sale.



Lot 539



Lot 540

# 540

**PM BISMARCK 131'18**

February 16, 2018 / FIRE 131F / 2032732

G A R GRID MAKER DMF AMF CAF OHF NHF OSF DDF  
**S A V BISMARCK 5682** DMF AMF CAF OHF NHF OSF DDF  
 S A V ABIGALE 0451

MUSGRAVE AVIATOR DMF AMF CAF OHF NHF OSF DDF  
**PM ERROLLINE 53'16**  
 PM ERROLLINE 91'13

G D A R TRAVELER 044 AMF CAF OHF NHF DDF  
 G A R PRECISION 2536 AMF NHF  
 SCHOENES FIX IT 826 AMF CAF OHF NHF DDF  
 S A V ABIGALE 6062 OHF

KOUPALS B&B IDENTITY DDF  
 MCATL FOREVER LADY 1429-138 DDF  
 ROYAL ADAPTOR DRCC 8094U  
 HF ERROLLINE 46W

PERF	BW	Adj 205D
	82	754

EPDS	BW	WW	YW	MILK	TM	CED	CEM
	0.9	53	89	23	50	8	12

Another great heifer bull sired by the breed legend SAV Bismarck and out of an Aviator 2 year old heifer. Bismarck semen has become very difficult to obtain. Will work to breed your heifers and enough punch to still use on cows.



Lot 541

# 541

**PM BREAKOUT 134'18**

February 17, 2018 / FIRE 134F / 2042356

AVF BREAKOUT 5409  
**MAY-WAY BREAKOUT 1310**  
 MAY-WAY LADY BANDO 086

WESTERN WIDESPREAD 1L  
**MVF ROSEBUD 313U**  
 MVF ROSEBUD 906N

S A V BISMARCK 5682 DMF AMF CAF OHF NHF OSF DDF  
 AVF SARA 0045  
 MAY-WAY 112 819  
 MAY-WAY LADY BANDO 745

WHITESTONE WIDESPREAD MB DMF AMF NHF OSF  
 BDM BLUE LADY ERICA 126'95  
 GDAR SVF TRAVELER 234D DMF AMF CAF OHF NHF OSF DDF  
 LENLOOK ROSEBUD 30G

PERF	BW	Adj 205D
	93	698

EPDS	BW	WW	YW	MILK	TM	CED	CEM
	4.8	51	89	23	49	1	10

This bull is definitely one of my favorites. An embryo calf out of my Rosebud cow and Breakout. Breakout without a doubt is the easiest fleshing bull I've ever seen. He can go walk the pastures breeding cows and come in fatter than when you put him out. It's not often a show bull can go out and work in the real world and excel at it. If you want to add Breakout genetics to your herd have a good hard look at this guy. Parent Verified.



Lot 542

# 542

**PM AVIATOR 136'18**

February 17, 2018 / FIRE 136F / 2042357

KOUPALS B&B IDENTITY DDF  
**MUSGRAVE AVIATOR** DMF AMF CAF OHF NHF OSF DDF  
 MCATL FOREVER LADY 1429-138 DDF

WESTERN WIDESPREAD 1L  
**MVF ROSEBUD 313U**  
 MVF ROSEBUD 906N

SITZ UPWARD 307R DMF AMF CAF NHF OSF DDF  
 B&B ERICA 605 OHF DDF  
 S A V FINAL ANSWER 0035 DMF AMF CAF OHF NHF OSF DDF  
 ALC FOREVER LADY R02S

WHITESTONE WIDESPREAD MB DMF AMF NHF OSF  
 BDM BLUE LADY ERICA 126'95  
 GDAR SVF TRAVELER 234D DMF AMF CAF OHF NHF OSF DDF  
 LENLOOK ROSEBUD 30G

PERF	BW	Adj 205D
	71	643

EPDS	BW	WW	YW	MILK	TM	CED	CEM
	0.8	43	74	22	44	5.5	14.5

Aviator embryo calf out of my Rosebud cow. This same breeding as produced bulls for many great operations. Will work in the heifer pen as well as your cow pasture. I have several full sisters in production that bring in the top end calves, No guess work on this guy. Parent Verified

543

## PM BREAKOUT 140'18

February 18, 2018 / FIRE 140F / 2042400

AVF BREAKOUT 5409  
**MAY-WAY BREAKOUT 1310**  
 MAY-WAY LADY BANDO 086

WESTERN WIDESPREAD 1L  
**MVF ROSEBUD 313U**  
 MVF ROSEBUD 906N

S A V BISMARCK 5682 DMF AMF CAF OHF NHF OSF DDF  
 AVF SARA 0045  
 MAY-WAY 112 819  
 MAY-WAY LADY BANDO 745

WHITESTONE WIDESPREAD MB DMF AMF NHF OSF DDF  
 BDM BLUE LADY ERICA 126'95  
 GDAR SVF TRAVELER 234D DMF AMF CAF OHF NHF OSF DDF  
 LENLOOK ROSEBUD 30G

PERF	BW	Adj 205D
	94	676

EPDS	BW	WW	YW	MILK	TM	CED	CEM
	4.1	50	87	24	48	1	10

Another Breakout x Rosebud embryo bull. This guy didn't have the best recip mother but seems to be catching up now. Parent Verified



Lot 543

544

## PM AVIATOR 141'18

February 18, 2018 / FIRE 141F / 2032734

KOUPALS B&B IDENTITY DDF  
**MUSGRAVE AVIATOR** DMF AMF CAF OHF NHF OSF DDF  
 MCATL FOREVER LADY 1429-138 DDF

CONNELLY CONSENSUS 7229 DMF AMF CAF OHF NHF OSF DDF  
**PM TIBBIE 43'13**  
 HF TIBBIE 109Y

SITZ UPWARD 307R DMF AMF CAF NHF OSF DDF  
 B&B ERICA 605 OHF DDF  
 S A V FINAL ANSWER 0035 DMF AMF CAF OHF NHF OSF DDF  
 ALC FOREVER LADY R02S

CONNELLY CONSENSUS DDF  
 BLUE LILLY OF CONANGA 16 CAF  
 SOUTHLAND EXCLUSIVE 62U  
 HF TIBBIE 127U

PERF	BW	Adj 205D
	84	767

EPDS	BW	WW	YW	MILK	TM	CED	CEM
	1.1	58	100	25	54	5	11

This Aviator son would be Monty's bull. He is out of a really good Consensus cow. Monty's priorities have changed too and he is selling this one for car parts. He is a ¾ brother to Taylor's 123F bull.



Lot 544

545

## PM AVIATOR 146'18

February 19, 2018 / FIRE 146F / 2042313

KOUPALS B&B IDENTITY DDF  
**MUSGRAVE AVIATOR** DMF AMF CAF OHF NHF OSF DDF  
 MCATL FOREVER LADY 1429-138 DDF

WESTERN WIDESPREAD 1L  
**MVF ROSEBUD 313U**  
 MVF ROSEBUD 906N

SITZ UPWARD 307R DMF AMF CAF NHF OSF DDF  
 B&B ERICA 605 OHF DDF  
 S A V FINAL ANSWER 0035 DMF AMF CAF OHF NHF OSF DDF  
 ALC FOREVER LADY R02S

WHITESTONE WIDESPREAD MB DMF AMF NHF OSF DDF  
 BDM BLUE LADY ERICA 126'95  
 GDAR SVF TRAVELER 234D DMF AMF CAF OHF NHF OSF DDF  
 LENLOOK ROSEBUD 30G

PERF	BW	Adj 205D
	83	669

EPDS	BW	WW	YW	MILK	TM	CED	CEM
	0.8	43	74	22	44	5.5	14.5

Full brother to the 136F bull. There is not many places you can buy full brothers and gain the advantage of a consistent calf crop. This mating has worked well and you don't have to wonder if it will. Heifer pen is his calling. Parent Verified



Lot 545

# **GRASSLAND EQUIPMENT LTD.**

**Williams Lake ~ Vanderhoof**  
**250-392-4024 ~ 250-567-4446**

## **T6 Series tractors**

**Engineered to outperform  
competitive tractors, so you can  
achieve higher productivity with  
less effort.**

## **Roll Belt Series balers**

**No matter the crop, weather or  
storage conditions, bale density  
can be conveniently adjusted  
from the tractor**



**NEW HOLLAND**

**AGRICULTURE**

546

## PM JUSTIFIED 148'18

February 19, 2018 / FIRE 148F / 2032778

SANKEYS LAZER 609 OF 6N DMF AMF  
**SANKEYS JUSTIFIED 101**  
 SANKEYS ERICA 525

MUSGRAVE AVIATOR DMF AMF CAF OHF NHF OSF DDF  
**PM KATIE 17'14**  
 SCHOCHANETQUA KATIE 166Y

EXAR LUTTON 1831 DMF AMF CAF OHF NHF DDF  
 ROTH ELDORENE 1195 DMF  
 DAJS ALL STAR M243 OHF  
 EXARA ERICA 6338

KOUPALS B&B IDENTITY DDF  
 MCATL FOREVER LADY 1429-138 DDF  
 S A V FINAL ANSWER 0035 DMF AMF CAF OHF NHF OSF DDF  
 SCHOCHANETQUA MISS KATIE 103L

PERF	BW	Adj 205D
	96	771

EPDS	BW	WW	YW	MILK	TM	CED	CEM
	3.5	56	95	21	49	-3	4

Last of the Sankeys Justified calves. Dam is a bigger framed Aviator daughter. Would recommend this guy to be used on cows. We weigh our calves within the first 24 hours of calving and the weights are what they are. It is beyond frustrating looking at sale books ever spring and seeing very little variance in birthweights. I think our sale bulls go from 71 lbs to 102 lbs.



Lot 546

547

## PM BREAKOUT 156'18

February 19, 2018 / FIRE 156F / 2042461

AVF BREAKOUT 5409  
**MAY-WAY BREAKOUT 1310**  
 MAY-WAY LADY BANDO 086

WESTERN WIDESPREAD 1L  
**MVF ROSEBUD 313U**  
 MVF ROSEBUD 906N

S A V BISMARCK 5682 DMF AMF CAF OHF NHF OSF DDF  
 AVF SARA 0045  
 MAY-WAY 112 819  
 MAY-WAY LADY BANDO 745

WHITESTONE WIDESPREAD MB DMF AMF NHF OSF  
 BDM BLUE LADY ERICA 126'95  
 GDAR SVF TRAVELER 234D DMF AMF CAF OHF NHF OSF DDF  
 LENLOOK ROSEBUD 30G

PERF	BW	Adj 205D
	82	709

EPDS	BW	WW	YW	MILK	TM	CED	CEM
	4.1	50	87	24	48	1	10

Lower birthweight embryo calves. Embryo split giving us twin bull calves. The Breakout bull really stamps his progeny with a look at me attitude and his old school angus head. I think Breakout is a bull who will continue to gain more popularity as time passes. Cow bull recommendation. Parent Verified



Lot 547

548

## PM BREAKOUT 157'18

February 19, 2018 / FIRE 157F / 2042460

AVF BREAKOUT 5409  
**MAY-WAY BREAKOUT 1310**  
 MAY-WAY LADY BANDO 086

WESTERN WIDESPREAD 1L  
**MVF ROSEBUD 313U**  
 MVF ROSEBUD 906N

S A V BISMARCK 5682 DMF AMF CAF OHF NHF OSF DDF  
 AVF SARA 0045  
 MAY-WAY 112 819  
 MAY-WAY LADY BANDO 745

WHITESTONE WIDESPREAD MB DMF AMF NHF OSF  
 BDM BLUE LADY ERICA 126'95  
 GDAR SVF TRAVELER 234D DMF AMF CAF OHF NHF OSF DDF  
 LENLOOK ROSEBUD 30G

PERF	BW	Adj 205D
	80	714

EPDS	BW	WW	YW	MILK	TM	CED	CEM
	4.1	50	87	24	48	1	10

see footnote FIRE 156F



Lot 548



Lot 549

# 549

**PM THUNDERSTRUCK 159'18**

February 19, 2018 / FIRE 159F / 2042471

HF THUNDERBIRD 146Y  
**PM THUNDERSTRUCK 22'13**  
MVF ROSEBUD 313U

MWC 108T IMAGE MAKER  
**MWC BLACK BEAUTY 19Y**  
FRL BLACK BEAUTY 9M

HF TIGER 5T AMF CAF OHF NHF OSF DDF  
HF ECHO 187N  
WESTERN WIDESPREAD 1L  
MVF ROSEBUD 906N

H A IMAGE MAKER 0415 DMF AMF CAF OHF NHF OSF DDF  
CRESCENT CREEK ROSEBUD 115F  
WHITESTONE WIDESPREAD MB DMF AMF NHF OSF  
KBJ BLACK BEAUTY 442J

PERF	BW	Adj 205D
92		668

EPDS	BW	WW	YW	MILK	TM	CED	CEM
2.7	45	77	27	50	2	8	

Sired by our Thunderstruck bull who won Supreme at the Royal in 2015. Dam was a donor cow and past show female for us. I except this guy to produce big middled, hairy and thick offspring. Recommend for cows. Parent Verified



Lot 550

# 550

**PM AVIATOR 161'18**

February 19, 2018 / FIRE 161F / 2042311

KOUPALS B&B IDENTITY DDF  
**MUSGRAVE AVIATOR** DMF AMF CAF OHF NHF OSF DDF  
MCATL FOREVER LADY 1429-138 DDF

WESTERN WIDESPREAD 1L  
**MVF ROSEBUD 313U**  
MVF ROSEBUD 906N

SITZ UPWARD 307R DMF AMF CAF NHF OSF DDF  
B&B ERICA 605 OHF DDF  
S A V FINAL ANSWER 0035 DMF AMF CAF OHF NHF OSF DDF  
ALC FOREVER LADY R02S

WHITESTONE WIDESPREAD MB DMF AMF NHF OSF  
BDM BLUE LADY ERICA 126'95  
GDAR SVF TRAVELER 234D DMF AMF CAF OHF NHF OSF DDF  
LENLOOK ROSEBUD 30G

PERF	BW	Adj 205D
80		669

EPDS	BW	WW	YW	MILK	TM	CED	CEM
0.6	44	75	22	44	5.5	14.5	

Another full brother to the 136F and 146F. Tried and true mating. The Rosebud cow just had a natural born Basin Payweight 1682 bull calf in the first cycle of calves. 313U is now 11 years old and sound as can be. Has never had her feet touched and udder looks like it belongs to a young cow. This new calf will be her 81<sup>st</sup> direct progeny. Parent Verified



Lot 551

# 551

**PM THUNDERBIRD 164'18**

February 20, 2018 / FIRE 164F / 2042324

HF TIGER 5T AMF CAF OHF NHF OSF DDF  
**HF THUNDERBIRD 146Y**  
HF ECHO 187N

MWC 108T IMAGE MAKER  
**MWC BLACK BEAUTY 19Y**  
FRL BLACK BEAUTY 9M

HF KODIAK 5R AMF CAF OHF NHF MAF DDF  
HF ECHO 84R  
TC FREEDOM 104 DMF AMF CAF OHF NHF OSF DDF  
DURALTA 14C ECHO 32E

H A IMAGE MAKER 0415 DMF AMF CAF OHF NHF OSF DDF  
CRESCENT CREEK ROSEBUD 115F  
WHITESTONE WIDESPREAD MB DMF AMF NHF OSF  
KBJ BLACK BEAUTY 442J

PERF	BW	Adj 205D
95		778

EPDS	BW	WW	YW	MILK	TM	CED	CEM
2.8	50	92	29	54	4	5	

A great Thunderbird embryo bull. He is a full brother to a bred heifer we sold at Agribition to Isla Bank Angus. This bull had a weaning ratio of 114 in his group. The Thunderbird cows have really proven to be top end producers. This bull will have a little more frame on him. Parent Verified

552

**PM AVIATOR 166'18**

February 20, 2018 / FIRE 166F / 2042450

KROUPALS B&amp;B IDENTITY DDF

**MUSGRAVE AVIATOR** DMF AMF CAF OHF NHF OSF DDF  
MCATL FOREVER LADY 1429-138 DDF

WESTERN WIDESPREAD 1L

**MVF ROSEBUD 313U**  
MVF ROSEBUD 906N

SITZ UPWARD 307R DMF AMF CAF NHF OSF DDF

B&B ERICA 605 OHF DDF  
S A V FINAL ANSWER 0035 DMF AMF CAF OHF NHF OSF DDF  
ALC FOREVER LADY R025WHITESTONE WIDESPREAD MB DMF AMF NHF OSF DDF  
BDM BLUE LADY ERICA 126'95  
GDAR SVF TRAVELER 234D DMF AMF CAF OHF NHF OSF DDF  
LENLOOK ROSEBUD 30G

PERF	BW	Adj 205D
83	671	

EPDS	BW	WW	YW	MILK	TM	CED	CEM
	1.2	43	74	22	44	5.5	14.5

Another full brother to the 3 bulls ahead of him in catalogue. I select my sale bulls from phenotype not pedigree and didn't realize how many of this flush made the sale. Parent Verified



Lot 552

553

**PM THUNDERBIRD 174'18**

February 21, 2018 / FIRE 174F / 2065980

HF TIGER 5T AMF CAF OHF NHF OSF DDF

**HF THUNDERBIRD 146Y**  
HF ECHO 187N

MWC 108T IMAGE MAKER

**MWC BLACK BEAUTY 19Y**  
FRL BLACK BEAUTY 9M

HF KODIAK 5R AMF CAF OHF NHF MAF DDF

HF ECHO 84R  
TC FREEDOM 104 DMF AMF CAF OHF NHF OSF DDF  
DURALTA 14C ECHO 32EH A IMAGE MAKER 0415 DMF AMF CAF OHF NHF OSF DDF  
CRESCENT CREEK ROSEBUD 115F  
WHITESTONE WIDESPREAD MB DMF AMF NHF OSF DDF  
KBJ BLACK BEAUTY 442J

PERF	BW	Adj 205D
88	746	

EPDS	BW	WW	YW	MILK	TM	CED	CEM
	0.7	43	82	34	56	8	7

Embryo bull who is a full brother to the 164F bull. A full brother sold to Chilancoh Ranch in 2017. These bulls will definitely add pounds to your steer calves and make gorgeous replacement females.



Lot 553

554

**PM DENVER 180'18**

February 23, 2018 / FIRE 180F / 2033530

EXAR UPSHOT 2002B AMF CAF NHF OSF DDF

**C&C DENVER 4008**  
EXAR EVAS EXT 2886

MUSGRAVE AVIATOR DMF AMF CAF OHF NHF OSF DDF

**PM BLOSSOM 55'14**  
POPLAR MEADOWS BLOSSOM 64'12

EXAR UPSHOT 0562B AMF CAF NHF OSF DDF

EXAR ROYAL LASS 1067 DDF  
BR MIDLAND DMF AMF CAF OHF NHF DDF  
G A R EVAS EXT 1525 AMFKROUPALS B&B IDENTITY DDF  
MCATL FOREVER LADY 1429-138 DDF  
CONNELLY CONSENSUS 7229 DMF AMF CAF OHF NHF OSF DDF  
POPLAR MEADOWS BLOSSOM 2'10

PERF	BW	Adj 205D
90	769	

EPDS	BW	WW	YW	MILK	TM	CED	CEM
	2.5	59	105	21	51	5	11

Lots of performance in this Denver 4008 son. Dam is a really good Aviator daughter who was the dam of our \$12,000 high selling heifer calf to Robyn and Trent of Dragon View Angus. She went on to have a very impressive show career and topped it off with a Supreme win in Vanderhoof this summer.



Maternal sister to Lot 554



Lot 554



Lot 555

555

**PM BACK IN BLACK 185'18**

February 24, 2018 / FIRE 185F / 2042407

HF TIGER 5T AMF CAF OHF NHF OSF DDF  
**HF THUNDERBIRD 146Y**  
HF ECHO 187N

WESTERN WIDESPREAD 1L  
**MVF ROSEBUD 313U**  
MVF ROSEBUD 906N

HF KODIAK 5R AMF CAF OHF NHF MAF DDF  
HF ECHO 84R  
TC FREEDOM 104 DMF AMF CAF OHF NHF OSF DDF  
DURALTA 14C ECHO 32E

WHITESTONE WIDESPREAD MB DMF AMF NHF OSF  
BDM BLUE LADY ERICA 126'95  
GDAR SVF TRAVELER 234D DMF AMF CAF OHF NHF OSF DDF  
LENLOOK ROSEBUD 30G

PERF	BW	Adj 205D
	85	703

EPDS	BW	WW	YW	MILK	TM	CED	CEM
	3.3	46	83	21	44	3	7

This bull is none other than the full brother to "Thunderstruck".

You could write volumes on the accolades Thunderstruck received from being awarded Show Bull of the Year by CAA, Supreme Champion at Royal, Reserve Senior Champion at Denver to being widely received as a breeding bull throughout North America.

The 185F calf is quiet, tremendous thickness, perhaps a tick longer than Thunderstruck and has a world of opportunity ahead of him.

556

**PM THUNDERSTRUCK 187'18**

February 24, 2018 / FIRE 187F / 2042480

HF THUNDERBIRD 146Y  
**PM THUNDERSTRUCK 22'13**  
MVF ROSEBUD 313U

MWC 108T IMAGE MAKER  
**MWC BLACK BEAUTY 19Y**  
FRL BLACK BEAUTY 9M

HF TIGER 5T AMF CAF OHF NHF OSF DDF  
HF ECHO 187N  
WESTERN WIDESPREAD 1L  
MVF ROSEBUD 906N

H A IMAGE MAKER 0415 DMF AMF CAF OHF NHF OSF DDF  
CRESCENT CREEK ROSEBUD 115F  
WHITESTONE WIDESPREAD MB DMF AMF NHF OSF DDF  
KBJ BLACK BEAUTY 442J

PERF	BW	Adj 205D
	92	662

EPDS	BW	WW	YW	MILK	TM	CED	CEM
	2.7	45	77	27	50	2	8

Thunderstruck embryo bull. As you can see we have used embryo transfer fairly heavy this past year. We only flush cows who are proven and have the attributes we want to build our herd on. Many opportunities to obtain full brothers. Parent Verified



Lot 556

557

## PM AVIATOR 190'18

February 25, 2018 / FIRE 190F / 2042477

KOUPLS B&amp;B IDENTITY DDF

MUSGRAVE AVIATOR DDF  
MCATL FOREVER LADY 1429-138 DDF

N BAR EMULATION EXT AMF CAF OHF NHF DDF

BOTANY ANGUS TIBBIE 2S  
MVF TIBBIE 71M

SITZ UPWARD 307R DMF AMF CAF NHF OSF DDF

B&amp;B ERICA 605 OHF DDF

S A V FINAL ANSWER 0035 DMF AMF CAF OHF NHF OSF DDF  
ALC FOREVER LADY R025

EMULATION N BAR 5522

N BAR PRIMROSE 2424 OHF

VERMILION DATELINE 7078 DMF AMF CAF OHF NHF OSF DDF

GREENBUSH TIBBIE 5H

PERF	BW	Adj 205D
	81	708

EPDS	BW	WW	YW	MILK	TM	CED	CEM
	0.7	41	70	21	41	3.5	11.5

Aviator out of our EXT donor cow Botany Angus Tibbie 2S. Full brothers have sold to Riske Creek Ranching, Brian Teschke, Canyon Tree Farms, Douglas Lake Cattle and 2 to Blue Goose Cattle. The dam is your model angus cow and her picture graces the walls of Angus Central in Calgary. Parent Verified



Lot 557

558

## PM THUNDERSTRUCK 194'18

February 25, 2018 / FIRE 194F / 2042288

HF THUNDERBIRD 146Y

PM THUNDERSTRUCK 22'13  
MVF ROSEBUD 313U

MWC 108T IMAGE MAKER

MWC BLACK BEAUTY 19Y  
FRL BLACK BEAUTY 9M

HF TIGER 5T AMF CAF OHF NHF OSF DDF

HF ECHO 187N

WESTERN WIDESPREAD 1L

MVF ROSEBUD 906N

H A IMAGE MAKER 0415 DMF AMF CAF OHF NHF OSF DDF

CRESCENT CREEK ROSEBUD 115F

WHITESTONE WIDESPREAD MB DMF AMF NHF OSF DDF

KBJ BLACK BEAUTY 442J

PERF	BW	Adj 205D
	98	701

EPDS	BW	WW	YW	MILK	TM	CED	CEM
	2.7	45	77	27	50	2	8

Thunderstruck embryo calf. When we had Thunderstruck on display at Denver we had multiple people a day ask what breed he was. His muscle shape is not like your typical angus bull. He exemplifies the type of angus we try to breed - moderate in frame, easy fleshing, good feet and legs and stout.



Lot 558

559

## PM DODGE THE BULLET 197'18

February 25, 2018 / FIRE 197F / 2033539

MSF JOURNEY

JSAR DODGE THE BULLET C55 NHF  
JSAR MISS RODMAN 143JRTW

KESSLERS FRONTMAN R001 AMF CAF OHF NHF DDF

A & B QUEEN MOTHER 1399  
A & B QUEEN MOTHER 9387

S A V BRILLIANCE 8077 DMF AMF CAF OHF NHF OSF DDF

BR MISS RUBY 5029

JSAR MR RODMAN 39HKR CAF NHF OSF DDF

JSAR MISS MORGANS 143JRT

CONNEALY FRONT PAGE 0228 CAF OHF DDF

KESSLERS BELL 0024

S A V FINAL ANSWER 0035 DMF AMF CAF OHF NHF OSF DDF

A &amp; B QUEEN MOTHER 7342

PERF	BW	Adj 205D
	77	760

EPDS	BW	WW	YW	MILK	TM	CED	CEM
	-0.6	52	86	26	52	7	8.5

The only bull out of our new sire Dodge the Bullet. We had 32 calves last year out of him and the bulls averaged 83 lbs with a weaning index avg of 100 and heifer calves averaged 76 lbs and weaning average of 76 lbs. Dam is one of only a handful of Kessler Frontman daughters in Canada. This bull is long, smooth and should work in the heifer pen.



Lot 559



# Mutually Stronger.

- Farm & Ranch Insurance Packages
- Agricultural Products & Equipment
- Buildings & Machinery
- Farm & Ranch Liability
- Homeowners Farm Package
- Livestock
- Loss of Income



MUTUAL FIRE  
INSURANCE

**250.570.4720**

**[InsVhf@integriscu.ca](mailto:InsVhf@integriscu.ca)**

201 West Stewart Street  
Vanderhoof, BC V0J 3A0

**[integriscu.ca](http://integriscu.ca)**



560

## PM DENVER 198'18

February 25, 2018 / FIRE 198F / 2033540

EXAR DENVER 2002B AMF CAF NHF OSF DDF  
**C&C DENVER 4008**  
 EXAR EVAS EXT 2886

BAR-E-L UNFORGIVEN 102U  
**WILBAR PRIDE 281A**  
 WILBAR PRIDE 221X

EXAR UPSHOT 0562B AMF CAF NHF OSF DDF  
 EXAR ROYAL LASS 1067 DDF  
 BR MIDLAND DMF AMF CAF OHF NHF DDF  
 G A R EVAS EXT 1525 AMF

S A V NET WORTH 4200 DMF AMF CAF OHF NHF OSF DDF  
 BAR-E-L MAGNOLIA 143K  
 DUFF ENCORE 702 DMF AMF CAF OHF NHF OSF DDF  
 WILBAR PRIDE 845U

PERF	BW	Adj 205D
	92	783

EPDS	BW	WW	YW	MILK	TM	CED	CEM
	3.4	50	88	22	47	1	8

Super stout and thick Denver son. His dam is a beautiful young cow we purchased from Wilbar as a calf. Dam is sired by a maternal brother to our Natural Law bull. This calf ranked 7/47 with a weaning ratio of 108.



Lot 560

561

## PM PIONEER 202'18

February 26, 2018 / FIRE 202F / 2033632

PEAK DOT PIONEER 9X CAF  
**PEAK DOT PIONEER 124B**  
 QUEEN OF PEAK DOT 882Y

MUSGRAVE STIMULUS 1052-945 DDF  
**PM ELSIEMERE 185'15**  
 PM ELSIEMERE 3'13

S A V PIONEER 7301 DMF AMF CAF OHF NHF OSF DDF  
 DUCHESS OF PEAK DOT 610T  
 S A V BULLETIN 7904  
 QUEEN OF PEAK DOT 904W

CONNELLY STIMULUS 8419 DMF DMF AMF CAF OHF NHF OSF DDF  
 M A MISS EMULOUS 945-192 DDF  
 CONNELLY CONSENSUS 7229 DMF AMF CAF OHF NHF OSF DDF  
 HF ELSIEMERE 173Y

PERF	BW	Adj 205D
	89	864

EPDS	BW	WW	YW	MILK	TM	CED	CEM
	2.5	60	105	31	61	7	9

A powerhouse Pioneer son out of a really good Stimulus 3 year old. Dam's first calf is retained in our herd. Pioneer was our heifer bull for the first 2 years and has now moved over to the cows. Lots of grow in this bull and should be able to get out and travel.

**Sire Verified**



Lot 561

562

## PM BISMARCK 203'18

February 26, 2018 / FIRE 203F / 2033633

G A R GRID MAKER DMF AMF CAF OHF NHF OSF DDF  
**S A V BISMARCK 5682** DMF AMF CAF OHF NHF OSF DDF  
 S A V ABIGALE 0451

SITZ DASH 10277 DMF AMF CAF OHF NHF OSF DDF  
**A & B FOREVER LADY 1407**  
 A & B FOREVER LADY 4330

G D A R TRAVELER 044 AMF CAF OHF NHF DDF  
 G A R PRECISION 2536 AMF NHF  
 SCHOENES FIX IT 826 AMF CAF OHF NHF DDF  
 S A V ABIGALE 6062 OHF

SITZ UPWARD 307R DMF AMF CAF NHF OSF DDF  
 SITZ EVERELDA ENTENSE 2665  
 EXAR NEW DESIGN 1565 AMF DDF  
 A & B FOREVER LADY 1287

PERF	BW	Adj 205D
	84	757

EPDS	BW	WW	YW	MILK	TM	CED	CEM
	1	54	92	23	50	10.5	11.5

Bismarck bull out of a Sitz Dash cow. This bull has a unique pedigree and would make a great heifer bull in either a purebred or commercial herd. Dam's 2017 daughter sold to LLB Angus in our Shades of Autumn sale last fall. Take a close look at this bull.



Lot 562



Lot 563

# 563

**PM THUNDERSTRUCK 207'18**

February 27, 2018 / FIRE 207F / 2042410

HF THUNDERBIRD 146Y  
**PM THUNDERSTRUCK 22'13**  
MVF ROSEBUD 313U

MWC 108T IMAGE MAKER  
**MWC BLACK BEAUTY 19Y**  
FRL BLACK BEAUTY 9M

HF TIGER 5T  
HF ECHO 187N  
WESTERN WIDESPREAD 1L  
MVF ROSEBUD 906N

H A IMAGE MAKER 0415  
CRESCENT CREEK ROSEBUD 115F  
WHITSTONE WIDESPREAD MB  
KBJ BLACK BEAUTY 442J

PERF	BW	Adj 205D
96	825	

EPDS	BW	WW	YW	MILK	TM	CED	CEM
2.7	45	77	27	50	2	8	

This is my favourite Thunderstruck bull. He is tie broke and was our alternate to go out last fall to the shows. He is deep side, thick and all the pieces fit together in an awesome package. If you consider wanting a bull to show this is definitely a contender.



Lot 564

# 564

**PM BREAKOUT 211'18**

February 27, 2018 / FIRE 211F / 2033639

AVF BREAKOUT 5409  
**MAY-WAY BREAKOUT 1310**  
MAY-WAY LADY BANDO 086

BVC JACK DANIELS B118  
**PM FAY 15'14**  
KFC 6135 FAY 8611U

S A V BISMARCK 5682  
AVF SARA 0045  
MAY-WAY 112 819  
MAY-WAY LADY BANDO 745

SYDGEN C C & 7  
BVC PRIDE U RT 636  
KFC RAINAGAIN 6135  
ARCH 37K FAY 730P

PERF	BW	Adj 205D
102	908	

EPDS	BW	WW	YW	MILK	TM	CED	CEM
6.1	80	134	30	70	-4	5	

The power bull of the group. I typically band all bull calves over a 100 lbs but I figured this cow would be able to raise a power calf. As you can see he has big birth but big 205 and will have a big 365 day weight. He ranked 1/39 at weaning with over a 900 lb205 day weight. Check out his EPD's for weaning and yearling as they are in the top 1% of the breed.



Lot 565

# 565

**PM PIONEER 220'18**

March 02, 2018 / FIRE 220F / 2033646

PEAK DOT PIONEER 9X  
**PEAK DOT PIONEER 124B**  
QUEEN OF PEAK DOT 882Y

ROYAL ADAPTOR DRCC 8094U  
**POPLAR MEADOWS VALLEY 111'12**  
KFC 205 VALLEY 9703W

S A V PIONEER 7301  
DUCHESS OF PEAK DOT 610T  
S A V BULLETIN 7904  
QUEEN OF PEAK DOT 904W

S A V ADAPTOR 2213  
ROYAL PERSEPHONE DRCC 4151P  
B A R EXT TRAVELER 205  
KFC 5789R VALLEY 7388T

PERF	BW	Adj 205D
86	729	

EPDS	BW	WW	YW	MILK	TM	CED	CEM
1.4	45	76	31	54	6	10	

Pioneer bull out of attractive made Adaptor daughter. Dam had a daughter sell to the Dunlevy Ranch and a bull to the Jolly River Ranch. We have not yet collected semen on the Pioneer bull but need to as we absolutely love his calves. We typically AI all the cows that come into heat the first 21 days and then we divide into pastures and put out bulls and that is why we don't have my Pioneer bulls old enough to make sale.

566

## PM PIONEER 235'18

March 05, 2018 / FIRE 235F / 2033677

PEAK DOT PIONEER 9X<sup>CAF</sup>  
**PEAK DOT PIONEER 124B**  
 QUEEN OF PEAK DOT 882Y

BVC JACK DANIELS B118  
**PM DUCHESS 101'15**  
 BELVIN DUCHESS 69'10

S A V PIONEER 7301<sup>DMF AMF CAF OHF NHF OSF DDF</sup>  
 DUCHESS OF PEAK DOT 610T  
 S A V BULLETIN 7904  
 QUEEN OF PEAK DOT 904W

SYDGEN C C & 7<sup>AMF CAF OHF NHF OSF DDF</sup>  
 BVC PRIDE U RT 636  
 GEIS KODIAK 12'07  
 BELVIN DUCHESS 26'07

PERF	BW	Adj 205D
	87	793

EPDS	BW	WW	YW	MILK	TM	CED	CEM
	2.9	60	106	28	58	3	8

Pioneer out of a 3 year old cow. The Grandmother 69X is recognized as an Outstanding Dam by CAA and her daughter seems to be headed the same direction. This calf ranked 5/39 at weaning. Dam's 2017 bull sold to Wineglass Cattle.



Lot 566

567

## PM BREAKOUT 239'18

March 06, 2018 / FIRE 239F / 2033680

AVF BREAKOUT 5409  
**MAY-WAY BREAKOUT 1310**  
 MAY-WAY LADY BANDO 086

CONNEALY CONSENSUS 7229<sup>DMF AMF CAF OHF NHF OSF DDF</sup>  
**POPLAR MEADOWS BLOSSOM 64'12**  
 POPLAR MEADOWS BLOSSOM 2'10

S A V BISMARCK 5682<sup>DMF AMF CAF OHF NHF OSF DDF</sup>  
 AVF SARA 0045  
 MAY-WAY 112 819  
 MAY-WAY LADY BANDO 745

CONNEALY CONSENSUS<sup>DDF</sup>  
 BLUE LILLY OF CONANGA 16<sup>CAF</sup>  
 HF TIGER 5T<sup>AMF CAF OHF NHF OSF DDF</sup>  
 POPLAR MEADOWS BLOSSOM 5'08

PERF	BW	Adj 205D
		802

EPDS	BW	WW	YW	MILK	TM	CED	CEM
	4.7	66	115	27	60	2	8.5

Attractive made Breakout bull. Born the first week of March and doesn't give up anything to the early born bulls. He has an 802 lb 205 day weight. The Breakout cattle have lots of grow in them in a very attractive proud package. Dam is from my high producing Blossom cow family. That cow family always weans off top end calves.



Lot 567

568

## PM JOURNEY 241'18

March 06, 2018 / TCB 241F / 2033681

MSF JOURNEY  
**PM JOURNEY 522**  
 I C ROSEBUD EDGE 1109

HF TIGER 206X  
**POPLAR MEADOWS TIBBIE 83'12**  
 MVF TIBBIE 19W

S A V BRILLIANCE 8077<sup>DMF AMF CAF OHF NHF OSF DDF</sup>  
 BR MISS RUBY 5029  
 S A V 004 DENSITY 4336<sup>DMF AMF CAF OHF NHF OSF DDF</sup>  
 S I ROSEBUD EDGE 109

HF TIGER 5T<sup>AMF CAF OHF NHF OSF DDF</sup>  
 2HR TIBBIE 18R  
 S A V FINAL ANSWER 0035<sup>DMF AMF CAF OHF NHF OSF DDF</sup>  
 MVF TIBBIE 973T

PERF	BW	Adj 205D
	72	712

EPDS	BW	WW	YW	MILK	TM	CED	CEM
	-2.1	39	59	20	40	13	8

This is Taylor's second bull. He is long and smooth built and looks like he will fit the heifer pen perfectly. Dam has had bulls sell to Mitch Carter/Monica Bomberger and Cody Herr. He is an early March calf out of our Journey bull. Journey is a bull you will be hearing lots about down the road.



Lot 568



# 569

**PM JOURNEY 242'18**

March 07, 2018 / FIRE 242F / 2033682

MSF JOURNEY  
**PM JOURNEY 522**  
I C ROSEBUD EDGE 1109

O C C PROTOTYPE 847P  
**A & B QUEEN 9127**  
A & B QUEEN 1220

S A V BRILLIANCE 8077  
BR MISS RUBY 5029  
S A V 004 DENSITY 4336  
S I ROSEBUD EDGE 109

O C C KANGA 886K  
O C C DIXIE ERICA 867K  
K M R FORCE 247  
A&B QUEEN 6203

PERF	BW	Adj 205D
85		763

EDDS	BW	WW	YW	MILK	TM	CED	CEM
	0.4	44	73	21	43	9.5	4

Moderate birthweight bull out of a powerhouse cow. The Journey bull is a new herdsire with 17 offspring this year and bulls and heifers averaged 78 lbs at birth. This at finally the last bull to write about. Send me a note on facebook or email to say you read all my footnotes and get entered into a draw to win a Roots Poplar Meadows Hoodie. I sometimes wonder if anyone reads these.

Lot 569

## For all your FARM INSURANCE NEEDS

**HUB International Insurance Brokers Ltd.**

*Insuring livestock, machinery, farm  
buildings and much more!*



**Located in the CO-OP Mall in Vanderhoof**

Phone: (250) 567-2231 / Fax: (250) 567-2071

188 Stewart Street E, Box 2180, CO-OP Mall  
Vanderhoof, BC, V0J 3A0

### **Hours of operation:**

Mon - Fri 9:00 am to 5:30 pm  
Sat 9:30 am to 3:30 pm

[www.hubinternational.com](http://www.hubinternational.com)





## RED MOON ANGUS

### *Red Angus Yearlings*



Welcome to the 9th Northern Alliance Bull Sale. The Northern Alliance group is truly appreciative of your support! The bulls on offer are just flat good, quality of this sale is hard to beat anywhere in the Country. That statement has been relayed to us many times. The Northern Alliance group stands behind every bull!

2018 was a great year personally for us. We welcomed the birth of our first grandchild, Henry James Moon. We are truly feeling blessed!

Our bulls reflect the fundamentals we breed for, calving ease, structure, maternal traits, muscle and performance. They will be 16 to 17 months by the time they head to your breeding pasture. We have recorded the actual weaning weights off the cow in the write ups. The Dam's side of things plays a very important role in her offspring, as such we include as much info on her in our write-ups as we can.

More information is available as we get closer to sale date, such as current weights. We record every bull's destination and can easily tell you if you have used a particular genetic line.

We continue to use Top AI sires in our lineup and purchase good walking bulls. Always keeping in mind the needs of our customers.

All the bulls are fed a home, we feed a balanced ration and locally grown dry mixed forage. Bulls are fed to promote healthy growth and development. Our target is 3 lbs a day. As of writing the bulls ADG is 3.12 lbs. The pen is on a complete vaccination program; including express 5 and protection for foot-rot, by sale day, all will have had their booster shots and ivermectin. We weigh every 28 days, weather permitting, weights may be viewed on our web site [www.remonnangus.com](http://www.remonnangus.com). The pen is fed by hand and bulls are familiar with people walking amongst them. All bulls will be vet checked and semen tested. They will be ready to work for you!

A huge thank you to Monty and Tanya, Poplar Meadows for providing a great venue! Also would like to thank Grant and Lorelee Rolston for traveling across the country in -35 to picture the bulls, very dedicated people and very appreciated by us.

Taylor Grafton will be on hand to take phone calls about the bulls beforehand or during the sale. He is dependable and non commissioned; you can reach him at 250-981-5980.

To all that have supported our program over the years, thank you! All Red Moon Bulls come with a bag of Green Angus Tags.

We wish you all easy calving and profitable calf sales!

Jim and Shirley

Tom, Charlotte and Henry

*Jim and Shirley, Tom and Charlotte*



## RS *RED MOON DRAGON RIDER 10D*

This bull was our high seller in 2017. We were fortunate enough to use him on a select group of cows thanks to the new owner Glenn and Denise Stewart. This is a bull that will provide performance to your calves. He has exceptional length, his calves are easy to pick out of the pen. We have no calving issues on him and actually used him on a few of our bigger heifers. His temperament is very good. We successfully showed him in Edmonton and he made us extremely proud! We have retained heifers from him and are confident he will add some superior females to Red Moon. Top weaning 4% EPD for weaning weight and top 7 for yearling weight.



Lot 570

## 570 *RED MOON FOOT SOLDIER 74F*

February 14, 2018 / MOON 74F / 2067687

RED RINGSTEAD KARGO 215U AMF NHE OSF MAF  
**RED MOON DRAGON RIDER 10D** OSF  
 RED WSF MS YANKEE 13T 12W OSC

RED MRLA ECONOMY 810 CAF  
**RED MOON TUBEE 57C**  
 RED MOON TUBEE 21Z

RED RINGSTEAD KARGO 107M  
 RED RINGSTEAD MS EQUAL 589P  
 RED BRYLOR/WSP KARWEIK 1P MAF  
 RED FINE LINE YANKEE 13T

RED BRYLOR SDL PASQUALE 213P  
 RED PFRA MS LAKOTA 105K  
 RED U-2 X-FACTOR 387X  
 RED MOON TUBEE 35U

PERF	BW	Adj 205D
	94	696

EPDS	BW	WW	YW	MILK	TM	CED	CEM
	4.1	39	65	19	39	0	4

Second calf from our Tubee cow. Average on two bull calves of 85 lbs. A good mother with good milk numbers great udder and sound on her feet and legs. We are looking forward to retaining some females from her. She is sired by one of the best walking bulls we have used, Red MRLA Economy has left us a great set of females and produced some really good bulls for commercial and purebred breeders across the country. You will have some really good replacements from this young sire Moon 74F. 3.05 ADG on farm feed test to date.



Lot 571

Highest gaining bull on feed of 4.08 lbs per day. Fifth calf from the dam averaging 94 lbs on bulls and 83 lbs on heifers. Bulls have worked for Doug Brophy and Barrie Jacobson. Larger BW here for mature cows. Don't forget a lot of that BW comes from the length in these Red Moon Dragon Rider calves. From a good solid cow family backed by a proven pedigree.

571

**RED MOON FIRE STORM 80F**

February 23, 2018 / MOON 80F / 2043647

RED RINGSTEAD KARGO 215U AMF NHF OSF MAF  
**RED MOON DRAGON RIDER 10D** OSF  
 RED WSF MS YANKEE 13T 12W OSC  
 RED NORTHLINE DILLINGER 17W  
**RED MOON BARMAID 41Z**  
 RED MOON MADISON AVE 37N

RED RINGSTEAD KARGO 107M  
 RED RINGSTEAD MS EQUAL 589P  
 RED BRYLOR/WSP KARWEIK 1P MAF  
 RED FINE LINE YANKEE 13T  
 RED SVR GANGSTER 14S AMF OSF MAF  
 RED G FORCE HENRIETTA 17D  
 RED ROYAL FORTUNE 64K  
 RED MOON BARMAID 17H

PERF	BW	Adj 205D
97		707

EPDS	BW	WW	YW	MILK	TM	CED	CEM
	4.5	38	62	17	36	-3	2

572

**RED MOON FACE MAKER 86F**

March 02, 2018 / MOON 86F / 2043650

RED RINGSTEAD KARGO 215U AMF NHF OSF MAF  
**RED MOON DRAGON RIDER 10D** OSF  
 RED WSF MS YANKEE 13T 12W OSC  
 RED U-2 X-FACTOR 387X  
**RED MOON DYNASTORM 18Z**  
 RED BROX DYNASTORM 28T

RED RINGSTEAD KARGO 107M  
 RED RINGSTEAD MS EQUAL 589P  
 RED BRYLOR/WSP KARWEIK 1P MAF  
 RED FINE LINE YANKEE 13T  
 RED U-2 DYNAMO 7021T  
 U-2 GIRL 4024P  
 RED SHODEREE STORM 44P  
 RED BROX DYNASTORM 77R

PERF	BW	Adj 205D
90		685

EPDS	BW	WW	YW	MILK	TM	CED	CEM
	2.8	35	62	16	34	3	7



Lot 572

Youngest bull in the pen by about a month, still managed to come in at 705 lbs. ADG on feed is 3.03 lbs to date. Fifth calf from a proven producer, females retained and a brother working for Murray Richardson. A sister has been sold to Robert Carlson, was our high selling heifer calf at the Shades of Autumn sale in 2017 at \$6 500.00, proven genetics. Another daughter going to Fine Line Angus. Solid cow family. This will be a solid performance producing bull.



## 573 RED MOON FORGED IN FIRE 24F

January 16, 2018 / MOON 24F / 2067712

RED RINGSTEAD KARGO 215U AMF NHF OSF MAF  
**RED MOON DRAGON RIDER 10D** OSF  
 RED WSF MS YANKEE 13T 12W OSC

RED RINGSTEAD KARGO 107M  
 RED RINGSTEAD MS EQUAL 589P  
 RED BRYLOR/WSP KARWEIK 1P MAF  
 RED FINE LINE YANKEE 13T

RED SIX MILE GRAND SLAM 130Z AMF NHF OSF MAF  
**RED MOON BARMAID 26D**  
 RED MOON BARMAID 40U

RED VGW GAME PLAN 816 AMF NHF OSF MAF  
 RED SIX MILE REBECCA 216X  
 RED BRYLOR TREND 34K  
 RED MOON BARMAID 39S

PERF	BW	Adj 205D
	87	731

EPDS	BW	WW	YW	MILK	TM	CED	CEM
	4.1	53	88	22	49	-2	1

From a first calf Barmaid heifer. This Bull is in the top 3% for weaning and yearling weight EPD and top 1% for maternal traits. Hit the ground at 87lbs and weaned off at 801 lbs. Not too bad for a first calver! Dams BW 94 lbs, sired by Red Six Mile Grand Slam 130Z a pretty outstanding individual. This young sire has an ADG of 3.14 lbs on our feed test, weighing in at 1030 lbs Jan 31.

# LUNCH

Is sponsored by  
**INTEGRIS CREDIT UNION**  
 - Vanderhoof Branch -

*Thank you for your support!*

## 574 RED MOON FADED JEANS 30F

January 16, 2018 / MOON 30F / 2043643

RED RINGSTEAD KARGO 215U AMF NHF OSF MAF  
**RED MOON DRAGON RIDER 10D** OSF  
 RED WSF MS YANKEE 13T 12W OSC

RED RINGSTEAD KARGO 107M  
 RED RINGSTEAD MS EQUAL 589P  
 RED BRYLOR/WSP KARWEIK 1P MAF  
 RED FINE LINE YANKEE 13T

RED BIEBER ROOSEVELT W384 DMF AMF NHF OSF  
**RED MOON MATILDA 31D**  
 RED MOON MATILDA 15P

RED BIEBER ROUGH RIDER 10712 OSF  
 RED BIEBER SHEBA 9602 AMC NHF OSF  
 RED GET-A-LONG MEGA FORCE 285  
 RED MOON PRINCESS 12H

PERF	BW	Adj 205D
	74	745

EPDS	BW	WW	YW	MILK	TM	CED	CEM
	1.5	45	69	21	44	5	6

Another bull from a first calf heifer, that's how much faith we had in Red Moon Dragon Rider 10D. this one comes with an exceptional weight spread from birth to weaning, going from 74 lbs to 822 lbs off a first calver. Really good female behind this bull. Jan 31 weight of 1124 lbs. Top EPDs for weaning, yearling and milk. Will add performance to replacements.



## 575 RED MOON FIRE FIGHTER 57F

January 31, 2018 / MOON 57F / 2043644

RED RINGSTEAD KARGO 215U AMF NHF OSF MAF  
**RED MOON DRAGON RIDER 10D** OSF  
 RED WSF MS YANKEE 13T 12W OSC

RED RINGSTEAD KARGO 107M  
 RED RINGSTEAD MS EQUAL 589P  
 RED BRYLOR/WSP KARWEIK 1P MAF  
 RED FINE LINE YANKEE 13T

RED BROX Y-EXTREME 37Y  
**RED MOON COUNTESS 33A**  
 RED MOON COUNTESS 39Y

RED ANCHOR 1 HITCH 38T CAF OSF  
 RED BROX SPARKLES 34W  
 RED NORTHLINE REV 341R OSF MAF  
 RED MOON COUNTESS 21R

PERF	BW	Adj 205D
	95	663

EPDS	BW	WW	YW	MILK	TM	CED	CEM
	4.6	41	67	20	41	-2	2

A bull for use on mature cows. Will push your scales down at weaning and yearling weights. Good gains on feed test of 3.28 lbs. Very deep body on the dam and exceptional udder and feet. He will make a good long term investment for your cow herd. This is the dam's first bull calf other 4 calves have all been heifers with average BW of 76 lbs. A good female maker.

# 576

## RED MOON FRANCO 59F

February 02, 2018 / TM 59F / 2067668

RED RINGSTEAD KARGO 215U AMF NHF OSF MAF  
**RED MOON DRAGON RIDER 10D** OSF  
 RED WSF MS YANKEE 13T 12W OSC

RED MRLA ECONOMY 810 CAF  
**RED MOON ELORA 14B**  
 RED DTA ELORA 15X

RED RINGSTEAD KARGO 107M  
 RED RINGSTEAD MS EQUAL 589P  
 RED BRYLOR/WSP KARWEIK 1P MAF  
 RED FINE LINE YANKEE 13T

RED BRYLOR SDL PASQUALE 213P  
 RED PFRA MS LAKOTA 105K  
 RED DMM PUMP 118T  
 RED JSTN ELORA 900T

PERF	BW	Adj 205D
	97	630

EPDS	BW	WW	YW	MILK	TM	CED	CEM
	3.6	32	53	20	36	1	5

Third calf from Tom and Charlottes Elora cow. She has a bull working for Barteld& Marlene Huisman. The dam is a thick made deep bodied cow. The kind of female we all try to strive for. Her BW was 62 lbs. and she possesses top EPD's for calving ease. Another long body bull calf with a lot of performance, backed by a great mother cow.



Lot 576

# 577

## RED MOON FOREIGN AFFAIR 75F

February 16, 2018 / MOON 75F / 2067686

RED RINGSTEAD KARGO 215U AMF NHF OSF MAF  
**RED MOON DRAGON RIDER 10D** OSF  
 RED WSF MS YANKEE 13T 12W OSC

RED MRLA ECONOMY 810 CAF  
**RED MOON DYNASTORM 64C**  
 RED BROX DYNASTORM 28T

RED RINGSTEAD KARGO 107M  
 RED RINGSTEAD MS EQUAL 589P  
 RED BRYLOR/WSP KARWEIK 1P MAF  
 RED FINE LINE YANKEE 13T

RED BRYLOR SDL PASQUALE 213P  
 RED PFRA MS LAKOTA 105K  
 RED SHODEREE STORM 44P  
 RED BROX DYNASTORM 77R

PERF	BW	Adj 205D
	78	713

EPDS	BW	WW	YW	MILK	TM	CED	CEM
	0.8	37	59	20	39	8	9

Low 78 lb birth weight and good grow, weaning from cow at 736 lbs, ADG on feed of 3.00 lbs. Good EPD's in the top 10% for calving ease and top 10% for maternal calving ease. Good milk number also. This is the dam's second calf with the first working for Larry Koller. Average BW on her calves of 77lbs. She ranks in the top 1% for calving ease and maternal calving ease. A good candidate to produce profitable steer calves and good replacements.



Lot 577

# 578

## RED MOON FAIR GAME 76F

February 17, 2018 / MOON 76F / 2067664

RED RINGSTEAD KARGO 215U AMF NHF OSF MAF  
**RED MOON DRAGON RIDER 10D** OSF  
 RED WSF MS YANKEE 13T 12W OSC

RED NORTHLINE REV 341R OSF MAF  
**RED MOON COUNTESS 39Y**  
 RED MOON COUNTESS 21R

RED RINGSTEAD KARGO 107M  
 RED RINGSTEAD MS EQUAL 589P  
 RED BRYLOR/WSP KARWEIK 1P MAF  
 RED FINE LINE YANKEE 13T

RED NORTHLINE ROB ROY 122K OSF MAF  
 RED NORTHLINE GEM 341N  
 RED GET-A-LONG MESQUITE 272  
 RED GET-A-LONG COUNTESS 0106

PERF	BW	Adj 205D
	88	717

EPDS	BW	WW	YW	MILK	TM	CED	CEM
	2.8	36	58	23	41	3	5

From a proven cow line here at Red Moon, a daughter from our Red Northline Rev 341R bull. Good temperament from this cow along with solid confirmations, very deep bodied. Sons working for C4 Ranching and Chuck and Diane Fletcher. Every daughter has been retained by us and always makes the show string. Good weaning weight off the cow of 778 lbs. ADG on feed of 3.03 lbs. A solid bull to make solid females.



Lot 578



Lot 579

# 579

**RED MOON FACE CARD 82F**

February 24, 2018 / MOON 82F / 2043648

RED RINGSTEAD KARGO 215U AMF NHF OSF MAF  
**RED MOON DRAGON RIDER 10D** OSF  
 RED WSF MS YANKEE 13T 12W OSC

RED GET-A-LONG MESQUITE 272  
**RED MOON BAYBERRY 18R**  
 RED MOON BAYBERRY 19K

RED RINGSTEAD KARGO 107M  
 RED RINGSTEAD MS EQUAL 589P  
 RED BRYLOR/WSP KARWEIK 1P MAF  
 RED FINE LINE YANKEE 13T

RED RCN SANDHILL CHF 482  
 RED GEIS RHODA 60'90  
 RED BROX HI-LINE 17H  
 RED SSS QUICK BAYBERRY 883B

PERF	BW	Adj 205D
	82	735

EDS	BW	WW	YW	MILK	TM	CED	CEM
	0.3	33	48	15	32	8	6

From one of our favorite cows. She is as honest as the day is long. She ranked in the top 1% for calving ease and top 10% for maternal calving ease. This is the 12th calf for her, longevity is a must in building a cow herd. Average weights on her bull calves have been 76 lbs and 80 lbs on her heifers. Progeny are working in both purebred herds and commercial herds across Canada. This bull calf is moderate in frame, birth weight and possesses the same temperament as the sire and dam. An overall solid calf.



**INDUSTRIAL, COMMERCIAL & RESIDENTIAL**  
 plumbing · heating · pumps · filtration

Tel: (250) 567-5888 | Cell: (250) 567-0922 | Fax: (250) 567-5885

Email: [jcs1@telus.net](mailto:jcs1@telus.net) | [www.jcwaterworks.ca](http://www.jcwaterworks.ca)

BOX 1866, 142 EAST COLUMBIA ST, VANDERHOOF, B.C, V0J 3A0

We wanted a bull born and raised in BC that also possessed calving ease, growth and strong maternal traits. This was that bull. Super calving ease and good grow. Allan and Lorraine produced a good one here, coming from a solid producing cow with 13 calves on the ground. His sire is the acclaimed XO Crowfoot 0102X bull.



## 580

### RED MOON FULL LIMIT 18F

January 13, 2018 / TM 18F / 2030083

XO CROWFOOT 0102X  
**RED NINE MILE COGEN 24C**  
 RED NINE MILE WITCHCRAFT 6N

RED MRLA ECONOMY 810 CAF  
**RED MOON PEACE 14D**  
 RED MOON PEACE 29Z

RED CROWFOOT MOONSHINE 8081U JAW CAF WAF OSF MAF  
 XO CROWFOOT BLACKBIRD 8810U  
 RED BRYLOR NEW TREND 22D OSF MAF  
 RED LCHMN WITCHCRAFT J1102

RED BRYLOR SDL PASQUALE 213P  
 RED PFRA MS LAKOTA 105K  
 RED U-2 X-FACTOR 387X  
 RED NORTH PEACE 55N

PERF	BW	Adj 205D
	74	590

EPDS	BW	WW	YW	MILK	TM	CED	CEM
	-1.1	19	32	20	30	10	12

Good calving ease on this calf. 74 lb birth weight, 635 lb weaning weight. 2.92 lbs adg on test to date. Mother is a thick made easy fleshing cow coming from Tom's 4H string. The Peace cows have been around this farm awhile and have provided a good foundation for Tom and Charlotte's group. This bull calf is in the top 10 percentile for calving ease. Dams BW 61 lbs. Calving ease both side of the pedigree.



Lot 581

The grand Dam, great dam and great great dam are still active in our herd. The Moon 18R cow has just provided us with her 13th calf. Longevity, good feet and above average udder. Average daily gain on test to date of writing was 3.09 lbs.

# 581

## RED MOON FIRE GUARD 17F

January 12, 2018 / MOON 17F / 2041401

XO CROWFOOT 0102X  
**RED NINE MILE COGEN 24C**  
RED NINE MILE WITCHCRAFT 6N

RED BROX ZANDER 11Z  
**RED MOON BAYBERRY 11D**  
RED MOON BAYBERRY 48B

RED CROWFOOT MOONSHINE 8081U AMF CAF NHE OSF MAF  
XO CROWFOOT BLACKBIRD 8810U  
RED BRYLOR NEW TREND 22D OSF MAF  
RED LCHMN WITCHCRAFT J1102

RED ANCHOR 1 HITCH 38T CAF OSF  
RED BROX LEADING LADY 22S  
RED MRLA ECONOMY 810 CAF  
RED MOON BAYBERRY 34Y

PERF	BW	Adj 205D
92	752	

EPDS	BW	WW	YW	MILK	TM	CED	CEM
3	38	61	22	41	1	6	

Really good performance from a first calf heifer. This Bayberry heifer had a really good show career, she represented us very well at Farm Fair in 2017. We received very good comments on all the females we showed that year in Edmonton. She will be on our farm for many years to come. Her ability to calve this really good bull calf and wean him off at 838 lbs is outstanding. We do not pamper our heifers, they need to perform from the get go. Her BW was 74 lbs. This Bayberry line has proven its self over and over.



Lot 582

# 582

## RED MOON FINAL VERDICT 21F

January 15, 2018 / MOON 21F / 2041400

XO CROWFOOT 0102X  
**RED NINE MILE COGEN 24C**  
RED NINE MILE WITCHCRAFT 6N

RED WHEEL DODGE CITY 61Y  
**RED BAR 4A COUNTESS 110D**  
RED MEM COUNTESS 40X

RED CROWFOOT MOONSHINE 8081U AMF CAF NHE OSF MAF  
XO CROWFOOT BLACKBIRD 8810U  
RED BRYLOR NEW TREND 22D OSF MAF  
RED LCHMN WITCHCRAFT J1102

RED WHEEL DODGE CITY 3U  
RED WHEEL PRIDE 29N  
RED WEBR DOC HOLLIDAY 2N OSF  
RED MEM COUNTESS 3N

PERF	BW	Adj 205D
78	780	

EPDS	BW	WW	YW	MILK	TM	CED	CEM
1.5	52	83	24	50	2	8	

Another good calving ease Cogan son, hitting the ground at 78 lbs and weaning off at 868 lbs. ADG on test to date is 3.46 lbs. Good stout bull calf, top 5% for weaning weight top 7 percent for yearling weight, top 10% for milk. Easy on your heifers with top performance. Also in top 25% for maternal calving ease. In other words his progeny should be full of calving ease.



Lot 583

# 583

## RED MOON FAST TRACK 52F

January 27, 2018 / MOON 52F / 2030081

XO CROWFOOT 0102X  
**RED NINE MILE COGEN 24C**  
RED NINE MILE WITCHCRAFT 6N

RED T-K BETTER ANSWER 62B  
**RED MOON BARMAID 57D**  
RED MOON BARMAID 41Z

RED CROWFOOT MOONSHINE 8081U AMF CAF NHE OSF MAF  
XO CROWFOOT BLACKBIRD 8810U  
RED BRYLOR NEW TREND 22D OSF MAF  
RED LCHMN WITCHCRAFT J1102

RED BAR-E-L WARDEN 144W  
RED HAMCO LAURA 5S  
RED NORTHLINE DILLINGER 17W  
RED MOON MADISON AVE 37N

PERF	BW	Adj 205D
80	656	

EPDS	BW	WW	YW	MILK	TM	CED	CEM
1.9	30	52	20	35	2	9	

An 80 lb bull calf from a first calf heifer. As we have said before our heifers need to perform. 682 lb weaning weight not bad for a first calver. Good milk and excellent maternal calving ease in this bull. His daughters will calve easy and have milking ability. ADG on test to date is 3.42 lbs. Good maternal traits going back to the Barmaid line of cows here at Red Moon. They have traditionally been good working no nonsense cows.

# 584

## RED MOON FOREMAN 56F

January 31, 2018 / MOON 56F / 2041375

XO CROWFOOT 0102X  
**RED NINE MILE COGEN 24C**  
 RED NINE MILE WITCHCRAFT 6N

RED MRLA ECONOMY 810 CAF  
**RED MOON COUNTESS 67D**  
 RED MOON COUNTESS 33A

RED CROWFOOT MOONSHINE 8081U AMF CAF NMF OSF MAF  
 XO CROWFOOT BLACKBIRD 8810U  
 RED BRYLOR NEW TREND 22D OSF MAF  
 RED LCHMN WITCHCRAFT J1102

RED BRYLOR SDL PASQUALE 213P  
 RED PFRA MS LAKOTA 105K  
 RED BROX Y-EXTREME 37Y  
 RED MOON COUNTESS 39Y

PERF	BW	Adj 205D
	78	732

ERDS	BW	WW	YW	MILK	TM	CED	CEM
	1.4	40	62	25	45	5	10

Great calving ease both sides of pedigree, calf hit the ground at 78 lbs and weaned off at 763 lbs another great job by a first calf heifer. Grand Dam is active in the herd and puts a deep body full of maternal traits calf on the ground. ADG on test to date is 3.14 lbs. Good solid calf here with performance.



Lot 584



thinking of  
**buying or  
 selling?**

Contact your local realtor!



**Ted SNELL**  
 Remax Vanderhoof

**Cell: 250-567-8756**

Office: 250-567-9222  
 Toll free: 1-800-659-1530  
 Fax: 250-567-4506

Email: [tedsnell@remax.net](mailto:tedsnell@remax.net)  
[www.realtor.ca](http://www.realtor.ca)

2416 Burrard Avenue  
 Vanderhoof BC, V0J 3A0

**RE/MAX**

**Outstanding Agents,  
 Outstanding Results.**

Each Office Independently Owned and Operated



# RS

## RED BIEBER ROOSEVELT W384

We have used the Roosevelt bull as an Ai Sire for 3 years now. We love his progeny, first heifers from him are calving now and are not disappointing us. His progeny are thick and have a super disposition. They perform well in the show ring with outstanding performance in the pasture. One of best sons to date was sold to C4 ranching of Vanderhoof, Red Moon Dragon Slayer 23D, also was Senior Yearling Champion at Farm Fair International not bad for a little farm from the Central Interior. We had the good fortune of using him on a select group of our own heifers. They are just calving now and we are extremely impressed with his calves.



Son of Roosevelt



Lot 585

## 585 RED MOON FIGHTER PILOT 38F

January 21, 2018 / MOON 38F / 2041365

RED BIEBER ROUGH RIDER 10712 OSF  
**RED BIEBER ROOSEVELT W384** DMF AMF NHF OSF  
 RED BIEBER SHEBA 9602 AMC NHF OSF

RED BASIN TRENDSETTER 6074 OSF MAF  
 RED BIEBER ADELLE 8958 OSF  
 C A FUTURE DIRECTION 5321 DMF AMC CAF OHF NHF OSF DDF  
 RED BIEBER SHEBA 5537 OSF

RED MRLA ECONOMY 810 CAF  
**RED MOON COUNTLESS 16B**  
 RED MOON COUNTLESS 39Y

RED BRYLOR SDL PASQUALE 213P  
 RED PFRA MS LAKOTA 105K  
 RED NORTHLINE REV 341R OSF MAF  
 RED MOON COUNTLESS 21R

PERF	BW	Adj 205D
	91	663

EPDS	BW	WW	YW	MILK	TM	CED	CEM
	0.6	25	37	22	35	7	10

Heavier birthweight on this calf but also comes with exceptional calving ease numbers and maternal calving ease. He is a female maker. Top 20% for milk, top 20% for calving ease and to 10% for maternal calving ease. His progeny will calve easy and milk well. The Dam is in the top 1% for calving ease and top 3% for maternal calving ease. This is her 3rd calf, all being bulls averaging 80 lb birth weights. Her birth weight was 60 lbs. Two sons working for Smith Creek Farms and Gordon Penner.

# 586

## RED MOON FARM BOY 32F

January 18, 2018 / MOON 32F / 2041367

RED BIEBER ROUGH RIDER 10712 OSF  
**RED BIEBER ROOSEVELT W384** DMF AMF NHF OSF  
 RED BIEBER SHEBA 9602 AMF NHF OSF

RED BASIN TRENDSETTER 6074 OSF MAF  
 RED BIEBER ADELLE 8958 OSF  
 C A FUTURE DIRECTION 5321 DMF AMF CAF OHF NHF OSF DDF  
 RED BIEBER SHEBA 5537 OSF

RED MRLA ECONOMY 810 CAF  
**RED MOON STAR 62B**  
 RED PR BAR CENTURY STAR 7M

RED BRYLOR SDL PASQUALE 213P  
 RED PFRA MS LAKOTA 105K  
 RED BAKERS CENTURY  
 RED MEADOW CK BRY STAR 51C

PERE	BW	Adj 205D
	75	704

EPDS	BW	WW	YW	MILK	TM	CED	CEM
	-0.5	32	46	21	37	9	11

This is the cows 3rd calf. Calf had a 75 lb birthweight and an impressive 838 lb weaning off the cow. Calving ease in top 10%. Average BW coming from this cow are 76 lbs. Her BW was 84 lbs. The grand dam produced 12 calves. Longevity is bred into this female line. We have sold the old cow's progeny into other purebred herds and also retained females for out use. 3.01 ADG on test to date. Son working for Golden Meadows Ranch Ltd.



Lot 586

# 587

## RED MOON FUTURE PROFIT 46F

January 25, 2018 / TM 46F / 2041358

RED BIEBER ROUGH RIDER 10712 OSF  
**RED BIEBER ROOSEVELT W384** DMF AMF NHF OSF  
 RED BIEBER SHEBA 9602 AMF NHF OSF

RED BASIN TRENDSETTER 6074 OSF MAF  
 RED BIEBER ADELLE 8958 OSF  
 C A FUTURE DIRECTION 5321 DMF AMF CAF OHF NHF OSF DDF  
 RED BIEBER SHEBA 5537 OSF

RED BROX Y-EXTREME 37Y  
**RED RED MOON DUCHESS 30A**  
 RED SIX MILE DUCHESS 351Y

RED ANCHOR 1 HITCH 38T CAF OSF  
 RED BROX SPARKLES 34W  
 PEAK DOT PREDOMINANT 135S  
 RED SIX MILE DUCHESS 183N

PERE	BW	Adj 205D
	84	660

EPDS	BW	WW	YW	MILK	TM	CED	CEM
	1.2	34	49	16	33	5	9

If you were at the sale last year you saw Tom beat his Dad out for Top Seller. Thank you to Tony and Marie Zemenchik for their purchase last year, a real boost to Tom and Charlottes breeding program. This bull should also be a favorite this year. Tom and Charlottes Red Moon Duchess 30A cow is definitely one of the best on the farm. All of her calves have been bull calves averaging 82 lbs. Her BW was 72 lbs. Super disposition, easy doing, and easy fleshing. This bull is bred to produce exceptional no nonsense kind of females for your herd. Good milk, good calving ease and great maternal calving ease. Very deep bodied cow with exceptional udder. Other bulls from this cow are working for Allen Joiner at OK Ranch and HRH Ranch Ventures.



Lot 587

# 588

## RED MOON FAIR MARKET 47F

January 26, 2018 / MOON 47F / 2067657

RED BIEBER ROUGH RIDER 10712 OSF  
**RED BIEBER ROOSEVELT W384** DMF AMF NHF OSF  
 RED BIEBER SHEBA 9602 AMF NHF OSF

RED BASIN TRENDSETTER 6074 OSF MAF  
 RED BIEBER ADELLE 8958 OSF  
 C A FUTURE DIRECTION 5321 DMF AMF CAF OHF NHF OSF DDF  
 RED BIEBER SHEBA 5537 OSF

RED MRLA ECONOMY 810 CAF  
**RED MOON TESS 70B**  
 RED MOON TESS 33Y

RED BRYLOR SDL PASQUALE 213P  
 RED PFRA MS LAKOTA 105K  
 RED NORTHLINE REV 341R OSF MAF  
 RED NORTH PEACE 35N

PERE	BW	Adj 205D
	88	734

EPDS	BW	WW	YW	MILK	TM	CED	CEM
	2	37	58	24	43	4	8

Another good Roosevelt son coming from our Tess line of cows. Third calf from the Cow, her bull calf last year was the lead off red bull for us, selling to Eldon Buck of Fort St James. Her one and only heifer calf has been retained by us. This Tess line is full of milk, calving ease and maternal calving ease. Definitely a bull calf here that will produce some really good breeding females. The Tess line has been outstanding in the show ring, going back to the original 35N cow. Many ranches across the province have bulls working from this line of cows. Super easy doing cows.



Lot 588



Quesnel Agro/C-Store



Vanderhoof Home Centre/Agro

## Fort St. James to 100 Mile House; Terrace to Valemount 15 Cardlock Locations

**Fuel Tank Sales & Rentals • Bulk Fuel Deliveries  
We Expedite & Deliver**

Vanderhoof Toll Free 1.888.545.2667 • Prince George: 1.866.309.2667

**NOW OPEN in** 100 Mile House 250.395.1713 • Quesnel: 1.888.992.2667

Houston: 1.800.848.6347 • Terrace: 250.635.9595

Total of 16 Petroleum Delivery Units and 2 Lube Oil Trucks

### PRINCE GEORGE LOCATIONS

6749 Westgate Avenue - **Westgate Gas Bar**  
250.964-2031

5520 Hartway Drive - **Hart Highway Cardlock**  
250.564-3488

998 Railway Road - **BCR Site Cardlock**  
250.564.3488



Gas Bar @ Westgate

### VANDERHOOF LOCATIONS

**Food Store** - 188 East Stewart Street  
250.567.4406

**Home Centre** - 250 East Stewart Street  
250.567.4464

**Gas Bar** - 227 West 1st Street  
250.567.4486

**Mini-storage** - 250.567.4414

### QUESNEL LOCATIONS

**Agro/C-Store** - 1280 Quesnel-Hixon Road  
250.992.7274 - Easy RV in/out

**Cardlock** - 3551 Highway 97 North  
250.992.7274 or TF 888.992.2667

# FOUR RIVERS CO-OPERATIVE

Head Office Toll Free: 877-567-4414

188 East Stewart Street, Vanderhoof



*You're at home here.*

A new AI bull we sampled to bring in new genetics to our herd. So far we have been impressed with his easy calving and easy fleshing calves. We will be keeping females in the herd. This is new genetics to Canada.



Lot 589

# 589

## RED MOON FERTILITY FIX 54F

January 28, 2018 / MOON 54F / 2043963

RED BUF CRK THE RIGHT KINDU199 OSF  
**RED 3J ONE OF A KIND A228** OSF MAF  
 RED BADLANDS CEDAR 922 OSF

RED BRYLOR TREND 34K  
**RED MOON BARMAID 40U**  
 RED MOON BARMAID 39S

RED BUF CRK LANCER R017 OSF MAF  
 RED BUF CRK SHOSHONE R353 OSF  
 RED TASSEL CHIVALRY 1G OSF  
 RED BADLANDS CEDAR 624 OSF

RED BRYLOR NEW TREND 22D OSF MAF  
 RED BRYLOR EILEEN 9B  
 RED BROX PVC 21P  
 RED MOON BARMAID 21N

PERF	BW	Adj 205D
	82	711

EPDS	BW	WW	YW	MILK	TM	CED	CEM
	-1.3	30	56	22	37	7	7

A pretty impressive bull with a big spread between birth and weaning. Born at 82 lbs weaning at 834 lbs. Weighing again on Jan 31 at 1117. ADG on feed test is 3.38 lbs to date. The Dam Moon 40U has been tagged an elite Dam by the Canadian Angus Association. She has produced bulls working for Barrie Jacobson, DG Cattle Co, Albert and Jacque Tosoff and C4 Ranching. Bull calves have average 88 lbs and heifers at 84 lbs. This bull is top for calving ease and milk. Will make great females!



Lot 590

# 590

**RED MOON FERDINAND 29F**

January 16, 2018 / TM 29F / 2043964

RED BUF CRK THE RIGHT KINDU199<sup>OSF</sup>  
**RED 3J ONE OF A KIND A228**<sup>OSF MAF</sup>  
 RED BADLANDS CEDAR 922<sup>OSF</sup>

RED BUF CRK LANCER R017<sup>OSF MAF</sup>  
 RED BUF CRK SHOSHONE R353<sup>OSF</sup>  
 RED TASSEL CHIVALRY 1G<sup>OSF</sup>  
 RED BADLANDS CEDAR 624<sup>OSF</sup>

RED U-2 X-FACTOR 387X  
**RED MOON PEACE 29Z**  
 RED NORTH PEACE 55N

RED U-2 DYNAMO 7021T  
 U-2 GIRL 4024P  
 RED DOUBLE A ROBIN HOOD 32J  
 RED GET-A-LONG GILDA 9102

PERF	BW	Adj 205D
	80	626

EPDS	BW	WW	YW	MILK	TM	CED	CEM
	-0.9	27	49	14	28	8	10

Red Moon has two of the only calves in Canada from this sire. New Genetics here for you. From a good 7 year old cow. She has a bull working for Floyd Jackson. This young sire is in the top 10% for calving ease and maternal calving ease. He hit the ground at 80 lbs and weaned off at 764 ls. Adg on feed test is 3.11 lbs. Dam has averaged 77 lbs on bull calves and 66 lbs on heifers. The 3J One of a Kind bull has averaged 81 lbs on bulls and 75 lbs on heifers. Calving ease on both sides.



## Bulkley Valley Credit Union



**A leading provider of financial services  
for over 72 years**

- ◆ Delivering high-quality customized service
- ◆ Contributing to the communities we serve
- ◆ Employing committed and empower staff
- ◆ Maintaining financial health and strong governance

Houston & District  
2365 Copeland Avenue  
250-845-7117

the Hazeltons  
4646 10th Avenue  
250-842-2255

Lakes District  
Lakeview Mall Hwy 16  
250-692-7761

Smithers  
3894 1st Avenue  
250-847-3255

WWW.BVCU.COM



# RS

**RED RINGSTEAD KARGO 215U**

We have used this bull as an AI sire for a few years now, great disposition on his calves. Very good feet and leg structure and great udders. They have worked well across Canada in many purebred operations along with commercial breeders throughout BC that we have sold too. Good female producing bull.



Lot 591

## 591 **RED MOON FLESHED KARGO 44F**

January 25, 2018 / MOON 44F / 2041374

RED RINGSTEAD KARGO 107M  
**RED RINGSTEAD KARGO 215U** AMF NHF OSF MAF  
RED RINGSTEAD MS EQUAL 589P

RED NORTHLINE REV 341R OSF MAF  
**RED MOON BAYBERRY 34Y**  
RED MOON BAYBERRY 18R

RED COMPASS KARGO 83K  
RED GET-A-LONG MRS. YOUNG 095  
RED SSS YUKON 440K  
RED SSS MISS EQUAL 495G

RED NORTHLINE ROB ROY 122K OSF MAF  
RED NORTHLINE GEM 341N  
RED GET-A-LONG MESQUITE 272  
RED MOON BAYBERRY 19K

PERE	BW	Adj 205D
	92	703

EPDS	BW	WW	YW	MILK	TM	CED	CEM
	2.5	38	61	18	37	3	6

Solid cow bull. Dam has produced 6 calves, her bulls are working for Stew Roberts and Bill Ephrom. We have retained heifers working in our own herd. The dam has an average BW on Bulls of 90 lbs and 75 lbs on heifers. This bull weaned off the cow at 831 lbs and weighed in on Jan 31 at 1180 lbs. with an average daily gain of 3.54 lbs. An excellent performance bull.

## 592 **RED MOON FOLLOW ME 45F**

January 25, 2018 / MOON 45F / 2067656

RED RINGSTEAD KARGO 107M  
**RED RINGSTEAD KARGO 215U** AMF NHF OSF MAF  
RED RINGSTEAD MS EQUAL 589P

RED NORTHLINE REV 341R OSF MAF  
**RED MOON TESS 33Y**  
RED NORTH PEACE 35N

RED COMPASS KARGO 83K  
RED GET-A-LONG MRS. YOUNG 095  
RED SSS YUKON 440K  
RED SSS MISS EQUAL 495G

RED NORTHLINE ROB ROY 122K OSF MAF  
RED NORTHLINE GEM 341N  
RED GET-A-LONG LINESMAN 103  
RED NORTH PEACE 82L

PERE	BW	Adj 205D
	95	684

EPDS	BW	WW	YW	MILK	TM	CED	CEM
	3.7	38	64	20	39	0	5

Coming from a nine year old Northline Rev 341R daughter, packed with performance for use on your mature cows. If you want to increase your weaning weights and produce solid replacements that will grow into solid females, this is the bull. Her progeny are valued in our herd as great mothers. This calf weaned off the cow at 807 lbs weighing in at 1125 lbs on Jan 31. ADG on feed test to date is 3.39 lbs.



Lot 592



# SURE CROP FEEDS

## **SURE CROP FEEDS INC.**

6863 Highway 97A North  
Grindrod, BC V0E 1Y0

**Phone: 1-250-838-6855**

**Toll Free 1-800-228-5491**

Email orders to [orderdesk@surecropfeeds.com](mailto:orderdesk@surecropfeeds.com)

***[www.surecropfeeds.com](http://www.surecropfeeds.com)***

---

## **SERVING FARMERS SINCE 1957**

***Proud supporter of the British Columbia Beef Industry***

One and only bull in our offering from the Flex bull. This Sire 79B has 64 registered progeny averaging 84 lbs on bulls and 82 lbs on heifers. Good footed cattle with lots of maternal traits and grow.



Lot 593

593

**RED MOON FIDDLER 48F**

January 27, 2018 / MOON 48F / 2075434

RED MRLA FLEX 49Z  
**RED LWNBRG FLEX 79B**  
 RED TED CHATEAU 6U

MRLA 53W  
 RED GET-A-LONG FIREFLY 363  
 RED GLACIER CHATEAU 744 OSF  
 RED TED RAMBLER 52L

RED VVV ADRENALINE 67M  
**RED GET-A-LONG DUCHESS 932**  
 RED DIMLER DUCHESS 28R

VVV TEX 30K  
 VVV EMILY 24J  
 RED GETALONG MAT DILLON 2124  
 RED DIMLER DUCHESS 521N

PERF	BW	Adj 205D
	80	678

EPDS	BW	WW	YW	MILK	TM	CED	CEM
	-0.4	41	71	20	41	5	9

Mother comes from our great friends at Get-A-Long Stock Farms. We chose this cow for her structure. Great udder, feet and depth of Body. She also brings some fresh new genetics to our herd. Hoping for some heifers to retain. This is her ninth calf hitting the ground at 80 lbs and weaning off at 797 lbs. This bull will mature into another great female maker. Mothers BW was 75 lbs, she has averaged 79 lbs on bull calves and 77 lbs on heifer calves.

158D came from Wilbar Cattle co. in Dundurn, Saskatchewan. A very good son from Red Bar-E-L Double Deuce 198Y. This bull is full of maternal traits. We have retained heifers and are expecting them to be a great addition to our herd. He is rated in the top 6% for milk and top 10 % for total maternal.



Lot 594

# 594

**RED MOON FAIR PLAY 19F**

January 13, 2018 / MOON 19F / 2030077

RED BAR-E-L DOUBLE DEUCE 198Y  
**RED WILBAR DOUBLE DEUCE 158D**  
 RED WILBAR SUE 3U

RED PERKS CHATEAU 309R <sup>OSF</sup>  
**RED MOON PRALEE 13B**  
 RED MOON PRALEE 47U

BAR-E-L WARPAINT 167W  
 RED BAR-E-L GLORIA 88R  
 RED SSS BOOMER 803B  
 RED RSL SUE 400F <sup>OSF</sup>

RED GLACIER CHATEAU 744 <sup>OSF</sup>  
 RED PERKS MISS RAMBO 8105 <sup>OSF</sup>  
 RED NORTHLINE REV 341R <sup>OSF MAF</sup>  
 RED ALLAVON PRALEE 27M

PERF	BW	Adj 205D
87	735	

EDS	BW	WW	YW	MILK	TM	CED	CEM
2.3	45	79	20	43	1	6	

Solid bull from our Pralee cow line. Moderate birth weight with an impressive off the cow weight of 888 lbs. Jan 31 weight of 1180 lbs. ADG on feed test to date of 3.04 lbs. Will add muscle and some frame. The Dams BW was 98 lbs and has average 88 lbs on her calves.



## HEARTLAND

**SOIL & CROP SOLUTIONS**

**Vanderhoof, BC**

*Creating Growing Environments*

- Crop Consulting • Soil Nutrient Recommendations
- Ag Coaching Services (annual retainer) • Field Scouting
- Soil & Plant Tissue Sampling

**Norm Dueck CCA**

Cell **250.570.1798** Fax 250.984.0775

**heartland.dueck@gmail.com**



## BLAST ANGUS

### *Black Angus Yearlings*



Welcome to the 2019 edition of the Annual Northern Alliance Bull Sale! We are very pleased to be working with the progressive group of breeders involved in this sale!

2018 was a year of challenges for us as well as most ranchers in BC. From one of the coldest, snowiest, longest winters ever to forest fires and grazing shortages in the summer! As well, I struggled with my health for most of the year. It really made you wonder why we put all the time and effort in to raising cattle! But, then when you see

how well your cows can forage and produce big strapping calves with little input, and that is the type of cattle you are striving for, it seems so worthwhile!

We are consigning an attractive, strong set of bulls that we are very proud of! Many calving ease bulls and some power bulls and some that are both!

We strive to raise moderate framed, easy fleshing, no fuss cattle.

Once again, we were very proud of the 4-H members who purchased calves from us and showed them off at the local fairs. The Grand Champion 4-H steer at the BV Exhibition exhibited by Sophie Stephens was the Grand Champion market steer out of 40 steers. Tyrel McEwen showed the top light weight steer which also came from our program as well as Champion female with his 2 year old cow he purchased from us. Myles Dekker showed the Champion heifer calf and his brother Brevan had the Grand Champion female in the Jr. show! We are really excited for this year as well as we sold 11 calves to 4-H members! Good luck kids!

You are welcome to stop by and view the bulls anytime. If you can't make the sale, we will do our best to help you in your selection.

We are super excited that we are joining the grandparents club in May too! Shea and Carli and Taylor are expecting a new baby! Maybe I will post less cow pictures after the baby is born!

Thanks to all previous bidders and buyers. Your support is appreciated! We look forward to visiting with you on sale day!



Pasture Poses  
Photography

# RS

## ATLASTA RAGE 88D

January 24 2016 / JBS 88D / 1941110

S A V 707 RITO 9969  
**REMITALL F RAGE 9A**  
REMITALL F KARMA 102W

REMINGTON RIGHT TIME 124R  
**ATLASTA BARDOLIA 84U**  
BB BARDOLIA 165

RITO 707 OF IDEAL 3407 7075  
BR POLLY 8077-472  
S A V FINAL ANSWER 0035  
BROOKMORE KARMA 100T

LEACHMAN RIGHT TIME  
CRESCENT CREEK BLACKCAP 84E  
SITZ ALLIANCE 6595  
BARDOLIA OF PEAK DOT 413N

PERF	BW	Adj 205D	Adj 365D	EPDS	BW	WW	YW	MILK	TM	CED	CEM
	80	729			0.8	39	70	24	44	3	6



# RS

## BORDER BUTTE FUNDAMENTAL 105B

January 02 2014 / BRDR 105B / 1788020

KESSLERS FRONTMAN R001  
**MUSGRAVE FOUNDATION**  
MCATL BLACKCAP JUARA 29-434

WOODHILL COMMANDER 143L-132N  
**BORDER BUTTE EVE 60W**  
BORDER BUTTE EVE 202N

CONNEALY FRONT PAGE 0228  
KESSLERS BELL 0024  
CONNEALY FINAL PRODUCT  
MA BLACKCAP JUARA 434

WOODHILL ADMIRAL 77K  
WOODHILL ERICA 1167-143L  
STEVENSON BRUNO 561G  
ALLEN CROFT JCT EVA 03 101B

PERF	BW	Adj 205D	Adj 365D	EPDS	BW	WW	YW	MILK	TM	CED	CEM
	87	784	1274		-1.6	62	99	27	58	10	8



# RS

## PEAK DOT NO DOUBT 25D

January 20 2016 / PDAR 25D / 1893045

MOGCK BULLSEYE  
**HOOVER NO DOUBT**  
MISS BLACKCAP ELLSTON J2

S A V RADIANCE 0801  
**PEAK DOT DUCHESS 32B**  
DUCHESS OF PEAK DOT 787Y

MOGCK SURE SHOT  
MOGCK MARY 1255  
SYDGEN C C & 7  
MISS BLACKCAP ELLSTON D154

S A V BRILLIANCE 8077  
S A V ELBA 801  
S A V ELIMINATOR 9105  
DUCHESS OF PEAK DOT 286W

PERF	BW	Adj 205D	Adj 365D	EPDS	BW	WW	YW	MILK	TM	CED	CEM
	59	748			3.1	55	107	21	49	3	11

595

**BLAST NO DOUBT 5F**

February 01, 2018 / SLS 5F / 2037778

HOOVER NO DOUBT AMF CAF OHF NHF OSF DDF  
**PEAK DOT NO DOUBT 25D**  
 PEAK DOT DUCHESS 32B

MOGCK BULLSEYE DMF AMF CAF OHF NHF OSF DDF  
 MISS BLACKCAP ELLSTON J2  
 S A V RADIANCE 0801 AMF CAF NHF DDF  
 DUCHESS OF PEAK DOT 787Y

BCAR GAME DAY 012  
**BLAST FRANKIE'S BLACKBIRD 47C**  
 GERLEI BLACKBIRD 57U

GDAR GAME DAY 6284  
 BREED CREEK M'BROOK LASS 636  
 STUART DESTINATION 32S  
 GERLEI BLACKBIRD 61R

PERC	BW	Adj 205D
	74	645

EPDS	BW	WW	YW	MILK	TM	CED	CEM
	0.4	40	79	18	38	9	12

Sired by one of our new herd sires, Peak Dot No Doubt 25D. 25D is a stout, moderate framed, good footed bull that is super quiet and easy to handle. 5F is a deep bull with ample thickness and out of a young Game Day cow. Just a 74lb birth weight, 0.4 birth epd, +9 calving ease and +12 maternal calving ease. Maternal sister sold to Roz Barron.

596

**BLAST FUNDAMENTAL 6F**

February 01, 2018 / SLS 6F / 2037779

MUSGRAVE FOUNDATION AMF CAF OHF NHF DDF  
**BORDER BUTTE FUNDAMENTAL 105B**  
 BORDER BUTTE EVE 60W

KESSLERS FRONTMAN R001 AMF CAF OHF NHF DDF  
 MCATL BLACKCAP JUARA 29-434 CAC  
 WOODHILL COMMANDER 143L-132N DMF AMF CAF OHF NHF OSF DDF  
 BORDER BUTTE EVE 202N

BCAR GAME DAY 012  
**BLAST MISS MAYFLOWER 29Z**  
 BLAST MISS MAYFLOWER 4M

GDAR GAME DAY 6284  
 BREED CREEK M'BROOK LASS 636  
 Y-NOT BATTLE CRY 5J  
 BLAST MISS MAYFLOWER 1H

PERC	BW	Adj 205D
	83	714

EPDS	BW	WW	YW	MILK	TM	CED	CEM
	1.3	49	87	23	47	4.5	7

Another Border Butte Fundamental 105B son with a little more frame. These are our last bulls sired by Fundamental as we sold him to Eastondale Angus in Saskatchewan. He worked so well for us-calving ease and power! He really was the whole package! 6F is really deep sided with ample thickness and again, very docile! He has a really strong set of EPDs as well. Maternal brother to Dirk Vandermeer and maternal sister to Luke & Amanda Muehlen.



Lot 596



**Vanderhoof, BC**  
**250-567-6880**

**Fibre Hauling**  
**Aggregate Supply and Placement**  
**Road Construction**  
**Utility Installation & Coordination**  
**Site preparation**  
**Sub-division Development**  
**Foundations**  
**Demolition and Removal**

**Supporting Agriculture in the Nechako Region**

[www.m4enterprises.ca](http://www.m4enterprises.ca)

[info@m4enterprises.ca](mailto:info@m4enterprises.ca)



# 597

## BLAST FUNDAMENTAL 13F

February 09, 2018 / SLS 13F / 2037784

MUSGRAVE FOUNDATION AMF CAF OHF NHF DDF  
**BORDER BUTTE FUNDAMENTAL 105B**  
BORDER BUTTE EVE 60W

GERLEI 62Z  
**BLAST MISS MAYFLOWER 12C**  
BLAST MISS MAYFLOWER 32Z

KESSLERS FRONTMAN R001 AMF CAF OHF NHF DDF  
MCATL BLACKCAP JUARA 29-434 CAC  
WOODHILL COMMANDER 143L-132N DMF AMF CAF OHF NHF OSF DDF  
BORDER BUTTE EVE 202N

DBRL AMBUSH 25X  
GERLEI GERT 88S  
BCAR GAME DAY 012  
BLAST MISS MAYFLOWER 4T

PERF	BW	Adj 205D
	71	760

EPDS	BW	WW	YW	MILK	TM	CED	CEM
	-2.1	53	84	24	51	12	12

Probably my favourite bull right from day one! Hit the ground at 71 lbs and had a 760 lb 205 day weight! Index of 109. He was his dams 2nd calf and wow did she do a job! A little different twist on the pedigree here too. Dam is sired by Gerlei Ambush 62Z who was known for his calving ease and productive, moderate framed daughters. Some of our best commercial cows are sired by 62Z. 12C has a gorgeous udder. She goes back to a Predominant cow. Negative 2.1 birth EPD, + 51 total maternal, +12 calving ease and + 12 maternal calving ease. This bull is super stout, wide topped and long. This is a powerful bull that could be used in the heifer pen or on cows. He is quiet as a kitten too!

# 598

## BLAST FUNDAMENTAL 19F

February 12, 2018 / SLS 19F / 2037808

MUSGRAVE FOUNDATION AMF CAF OHF NHF DDF  
**BORDER BUTTE FUNDAMENTAL 105B**  
BORDER BUTTE EVE 60W

BAR-E-L SANTANA 186S  
**GERLEI LADY 13X**  
LENLOOK LADY 57L

KESSLERS FRONTMAN R001 AMF CAF OHF NHF DDF  
MCATL BLACKCAP JUARA 29-434 CAC  
WOODHILL COMMANDER 143L-132N DMF AMF CAF OHF NHF OSF DDF  
BORDER BUTTE EVE 202N

CRESCENT CREEK 06 RITO 50L  
BAR-E-L DAISY 128K  
LENLOOK FORTUNE 44H  
LENLOOK LADY 15J

PERF	BW	Adj 205D
	69	611

EPDS	BW	WW	YW	MILK	TM	CED	CEM
	0.7	46	67	23	45	2.5	9.5

Sired by the Fundamental bull. 19F is a twin. 69 lbbw, 0.7 birth EPD. Dam always throws lighter birth weight calves. We bought her through the Gerlei Young cow dispersal out of Saskatchewan. 19F is a bit smaller framed bull, but is really thick. Maternal brothers to Springfield Ranch, Gary Schock and Wine Glass Cattle Co.

599

**BLAST FUNDAMENTAL 21F**

February 14, 2018 / SLS 21F / 2037788

MUSGRAVE FOUNDATION AMF CAF OHF NHF DDF  
**BORDER BUTTE FUNDAMENTAL 105B**  
 BORDER BUTTE EVE 60W

HF COMEBACK 264U  
**BLAST LADY HEATHER 20X**  
 BLAST LADY HEATHER 1K

KESSLERS FRONTMAN R001 AMF CAF OHF NHF DDF  
 MCATL BLACKCAP JUARA 29-434 CAC  
 WOODHILL COMMANDER 143L-132N DMF AMF CAF OHF NHF OSF DDF  
 BORDER BUTTE EVE 202N

HF KODIAK 5R AMF CAF OHF NHF MAF DDF  
 HF ECHO 91R  
 EBON HILL EQUALIZER 55'96  
 POPLAR MDWS LADY HEATHER 16H

PERF	BW	Adj 205D
	79	658

EPDS	BW	WW	YW	MILK	TM	CED	CEM
	-0.8	42	69	25	46	9	8

Another well balanced, attractive calving ease Fundamental bull. Dam is a moderate framed, highly maternal daughter of our Kodiak bull. This bull may be the sleeper of the sale! 79 lbbw and + 25 milk EPD which ranks him in the top 15% for the breed. Maternal brothers to Douglas Lake Cattle Co and Ties & Darlene Prins and a maternal sister to Austin Gray through the Shades of Autumn Female sale last fall. This bull will give you tremendous replacements- from a great cow family.



Pasture Poses  
 Photography

Lot 599

600

**BLAST RAGE 24F**

February 17, 2018 / SLS 24F / 2037791

REMITALL F RAGE 9A  
**ATLASTA RAGE 88D**  
 ATLASTA BARDOLIA 84U

BORDER BUTTE FUNDAMENTAL 105B  
**BLAST ERICA 1D**  
 BLAST ERICA 13A

S A V 707 RITO 9969 DMF AMF CAF NHF OSF DDF  
 REMITALL F KARMA 102W  
 REMINGTON RIGHT TIME 124R  
 BB BARDOLIA 16S

MUSGRAVE FOUNDATION AMF CAF OHF NHF DDF  
 BORDER BUTTE EVE 60W  
 BCAR GAME DAY 012  
 BLAST ERICA 10T

PERF	BW	Adj 205D
	81	744

EPDS	BW	WW	YW	MILK	TM	CED	CEM
	1.6	50	87	24	49	-1	2

This will be our first Atlasta Rage son to sell. We bought Rage for his expressive muscle shape & amazing foot structure. Dam is a first calving Border Butte Fundamental daughter. The Fundamental females have perfect udders and are really producing while keeping their condition. 81 lbbw, 744 lb205 day weight. Very balanced set of EPD's as well. 24F is long, smooth and hairy as well as has a very quiet disposition as an added bonus!



Pasture Poses  
 Photography

Lot 600

601

**BLAST NO DOUBT 26F**

February 17, 2018 / SLS 26F / 2037790

HOOVER NO DOUBT AMF CAF OHF NHF OSF DDF  
**PEAK DOT NO DOUBT 25D**  
 PEAK DOT DUCHESS 32B

PEAK DOT UNANIMOUS 586B AMF CAF OHF NHF DDF  
**BLAST MAYFLOWER G 5D**  
 BLAST MAYFLOWER G 24W

MOGCK BULLSEYE DMF AMF CAF OHF NHF OSF DDF  
 MISS BLACKCAP ELLSTON J2  
 S A V RADIANCE 0801 AMF CAF NHF DDF  
 DUCHESS OF PEAK DOT 787Y

VISION UNANIMOUS 1418 DMF AMF CAF NHF DDF  
 HEROINE OF PEAK DOT 962U  
 PEAK DOT HOBSON 114P  
 POPLAR MEADOWS MAYFLOWER G 22S

PERF	BW	Adj 205D
	84	655

EPDS	BW	WW	YW	MILK	TM	CED	CEM
	4.3	46	90	19	42	-2	3

A No Doubt son out of a first calving Peak Dot Unanimous 586B daughter. We sold 586B to Six Mile Ranch in Saskatchewan. Paternal sister sold for \$17,000 in the Six Mile Female Sale in the fall of 2018. 26F is super stylish! He is well balanced, big hipped and deep quartered. 84 lbbw. + 90 yw EPD.



Pasture Poses  
 Photography

Lot 601



**Michael Des Harnais, B.Sc. DVM**  
Veterinarian

4124 Railway Avenue, P.O. Box 3358, Smithers, BC V0J 2N0  
tel. **250.847.8887** fax **250.847.8886**  
e-mail [info@babineanimalhospital.ca](mailto:info@babineanimalhospital.ca) web [babineanimalhospital.ca](http://babineanimalhospital.ca)

# 602

## BLAST FUNDAMENTAL 33F

February 21, 2018 / SLS 33F / 2037798

MUSGRAVE FOUNDATION AMF CAF OHF NHF DDF  
**BORDER BUTTE FUNDAMENTAL 105B**  
BORDER BUTTE EVE 60W

HF COMEBACK 264U  
**BLAST TORI'S DARLINE 3Z**  
RED BLAST DARLINE 2U

KESSLERS FRONTMAN R001 AMF CAF OHF NHF DDF  
MCATL BLACKCAP JUARA 29-434 CAC  
WOODHILL COMMANDER 143L-132N DMF AMF CAF OHF NHF DDF  
BORDER BUTTE EVE 202N

HF KODIAK 5R AMF CAF OHF NHF MAF DDF  
HF ECHO 91R  
RED BLAST KAPTON 9S  
RED MOUNTAIN ASH DARLINE 17R

PERF	BW	Adj 205D
	84	771

EPDS	BW	WW	YW	MILK	TM	CED	CEM
	-0.1	50	79	26	51	8	7

A little bigger framed Fundamental bull out of one of the most attractive Kodiak daughters we have. 84 lbbw and 771 lb205 day weight. Maternal brother to Douglas Lake Cattle Co. and a maternal sister to Six Mile Angus Ranch in Saskatchewan and we have a maternal sister in the herd.



Pasture Poses  
Photography

Lot 603

# 603

## BLAST RAGE 37F

February 25, 2018 / SLS 37F / 2037800

REMITALL F RAGE 9A  
**ATLASTA RAGE 88D**  
ATLASTA BARDOLIA 84U

BCAR GAME DAY 012  
**BLAST ERICA 13A**  
BLAST ERICA 10T

S A V 707 RITO 9969 DMF AMF CAF NHF OSF DDF  
REMITALL F KARMA 102W  
REMINGTON RIGHT TIME 124R  
BB BARDOLIA 16S

GDAR GAME DAY 6284  
BREED CREEK M'BROOK LASS 636  
PEAK DOT HOBSON 114P  
BLAST ERICA 13R

PERF	BW	Adj 205D
	84	671

EPDS	BW	WW	YW	MILK	TM	CED	CEM
	2.2	39	74	22	42	1	3

Another Rage son out of a Game Day cow. Maternal brother was one of our high sellers last year. Maternal sister is the dam of 24F. Dam is an easy fleshing, broody cow with great feet and a great udder. Great grand dam is 12 and still producing. 37F is a very smooth built bull.



Pasture Poses  
Photography

Lot 604

# 604

## BLAST NO DOUBT 38F

February 25, 2018 / SLS 38F / 2037799

HOOVER NO DOUBT AMF CAF OHF NHF OSF DDF  
**PEAK DOT NO DOUBT 25D**  
PEAK DOT DUCHESS 32B

BCAR GAME DAY 012  
**BLAST BLACKBIRD 19B**  
GERLEI BLACKBIRD 57U

MOGCK BULLSEYE DMF AMF CAF OHF NHF OSF DDF  
MISS BLACKCAP ELLSTON J2  
S A V RADIANCE 0801 AMF CAF NHF DDF  
DUCHESS OF PEAK DOT 787Y

GDAR GAME DAY 6284  
BREED CREEK M'BROOK LASS 636  
STUART DESTINATION 32S  
GERLEI BLACKBIRD 61R

PERF	BW	Adj 205D
	89	736

EPDS	BW	WW	YW	MILK	TM	CED	CEM
	3.1	50	96	21	46	3	9

Another No Doubt bull that will catch your eye! He is full of red meat and has perfect foot structure with lots of depth of heel! 89 lb birth weight, 736 lb 205. + 50 WW and + 96 YW EPDS. Dam is a Game Day cow. All the Game Day females have perfect udders. Outstanding maternal sister in the herd. This bull has lots of hair, big nuts and a proud look. He, also, has a very quiet temperament.



Lot 605

605

**BLAST FUNDAMENTAL 48F**

March 19, 2018 / SLS 48F / 2070255

MUSGRAVE FOUNDATION AMF CAF OHF NHF DDF  
**BORDER BUTTE FUNDAMENTAL 105B**  
BORDER BUTTE EVE 60W

PEAK DOT HOBSON 114P  
**BLAST MISS MAYFLOWER 20U**  
BLAST MISS MAYFLOWER 5P

KESSLERS FRONTMAN R001 AMF CAF OHF NHF DDF  
MCATL BLACKCAP JUARA 29-434 CAC  
WOODHILL COMMANDER 143L-132N DMF AMF CAF OHF NHF OSF DDF  
BORDER BUTTE EVE 202N

STEVENSON BRUNO 6371  
MIA OF PEAK DOT 850L  
PEAK DOT RITO 35L  
BLAST MISS MAYFLOWER 4M

PERF	BW	Adj 205D
	85	810

EPDS	BW	WW	YW	MILK	TM	CED	CEM
	1.2	59	96	27	57	6	6

One of the most complete bulls we have ever sold! Big time herd bull prospect! Thick, deep and loaded with muscle! He has a moderate birth weight of 85lbs and a 205 day weight of 810 lbs( and remember this was the driest summer we have ever had and pasture was sparse!) He was the top indexing bull in our herd at 114. His dam is a gorgeous 11 year old Hobson daughter with perfect feet and a flawless udder. The kind of cow you would like a whole herd of! She has had sons sell to Breed Creek Angus, 2 to Dirk Vandermeer, Chilancoh Ranch and Clarence Friesen. Nice set of EPD's as well.

606

**BLAST FUNDAMENTAL 49F**

March 27, 2018 / SLS 49F / 2037805

MUSGRAVE FOUNDATION AMF CAF OHF NHF DDF  
**BORDER BUTTE FUNDAMENTAL 105B**  
BORDER BUTTE EVE 60W

TAFIKA ABERDEEN 31Z  
**POPLAR MEADOWS ERICA 8B**  
POPLAR MEADOWS ERICA 24N

KESSLERS FRONTMAN R001 AMF CAF OHF NHF DDF  
MCATL BLACKCAP JUARA 29-434 CAC  
WOODHILL COMMANDER 143L-132N DMF AMF CAF OHF NHF OSF DDF  
BORDER BUTTE EVE 202N

TC ABERDEEN 759 DMF AMF CAF OHF NHF OSF DDF  
TAFIKA 114P BLACK LADY 46X  
LEADTIME OF ALCAN 150  
POPLAR MEADOWS ERICA 25K

PERF	BW	Adj 205D
	73	759

EPDS	BW	WW	YW	MILK	TM	CED	CEM
	-1.1	51	80	28	54	10	11

Another March Fundamental bull out of a cow we got from Mom and Dad that is sired by Tafika Aberdeen 31Z. This young cow has done a stellar job for us so far! This is the 3rd full brother. Brothers have sold to Chilancoh Ranch and Springfield Ranch. Just a 73 lbbw and 759 lb205 day weight Indexed at 108. -1.1 birth EPD. This bull is stout and soggy in a moderate package. He will catch your eye!



Lot 606



Lot 607

607

## BLAST FUNDAMENTAL 50F

March 27, 2018 / SLS 50F / 2037806

MUSGRAVE FOUNDATION AMF CAF OHF NHF DDF  
**BORDER BUTTE FUNDAMENTAL 105B**  
BORDER BUTTE EVE 60W

HF COMEBACK 264U  
**BLAST MISS MAYFLOWER 8Y**  
BLAST MISS MAYFLOWER 1J

KESSLERS FRONTMAN R001 AMF CAF OHF NHF DDF  
MCATL BLACKCAP JUARA 29-434 CAC  
WOODHILL COMMANDER 143L-132N OHF AMF CAF OHF NHF DDF  
BORDER BUTTE EVE 202N

HF KODIAK 5R AMF CAF OHF NHF MAF DDF  
HF ECHO 91R  
EBON HILL EQUALIZER 55'96  
POPLAR MEADOWS MAYFLOWER 12B

PERF	BW	Adj 205D
	79	767

EPDS	BW	WW	YW	MILK	TM	CED	CEM
	-1.7	45	70	26	49	11	8

This March 27<sup>th</sup> young herdsire has all the bells and whistles! He really is the rancher's kind- thick, deep and loaded with muscle! 79lb bw and 767lb 205 day weight. -1.7 lb birth EPD which is in the top 2% for the breed. Dam is a smaller framed cow that can really whop out the calves! Maternal brothers to Wine Glass Ranch, Springfield Ranch and a maternal sister at Crystal Water Ranch. Grandmother is 20 years old. Longevity is built in to this guy!

# TERMS AND CONDITIONS

**Terms** The terms of the sale are cash or cheque payable at par. Cheques to be made payable to sale clerks on sale day unless prior arrangements have been made. The right of property shall not pass until settlement is made. All settlement is made with the clerks of the sale before any cattle will be released. US funds will be accepted at current rate of exchange announced sale day.

**Bids and Disputes** Every animal will be sold to the highest bidder. In case of disputes, bidding will re-open between the parties involved. If no further bid is made the buyer will be the persons from whom the auctioneer accepted the last bid. The auctioneer's decision in such a matter will be final.

**Announcements** Any corrections or announcements made from the block on sale day will take precedence over the catalogue.

**Purchasers Risk** Each animal becomes the risk of the purchaser as soon as it's sold or as soon as the auctioneers gavel falls.

**Certificate of Registry** A certificate of Canadian registry duly transferred will be furnished to the buyer of each animal sold as a registered animal after settlement is made in a timely manner.

**Breeders Guarantee** All cattle are sold sound and right with a responsible breeder guarantee of satisfaction. In the event of an unlikely dispute the terms and conditions standard with the Canadian Aberdeen Angus Association shall apply.

**Liability** Although every precaution will be taken to protect the safety and comfort of the buyers, the auctioneer, sale management, sale staff, the auction mart and owners assume no responsibility in this matter and disclaim any liability, legal or otherwise in the event of an accident or loss of property.

# MARBERLY *Angus*

## MARBERLEY ANGUS

### *Black Angus Yearlings*

Welcome to the 2019 Northern Alliance Bull Sale!

This year I have 9 very good yearling bulls in the sale. All of the bulls will be Zoetis tested, sire verified and semen tested prior to the sale. They have been vaccinated and boosted with Pyramid 5 Presponse and Ultrabac 7 Somnubac. The bulls are being fed alongside Jim and Shirley Moon's bulls at Red Moon Angus in Vanderhoof. Crescent Creek 12Z Chisum, purchased out of Saskatchewan from the Crescent Creek herd, is a moderate framed bull who is very correct and moves out well. He is very easy fleshing and easy to work around. I have calved his daughters for 2 years and they are great young cows. They are easy fleshing with beautiful udders, calm to work around and they breed back well. Chisum 6B's lifetime average for birth weights on his bull calves is 86 lb and on his heifer calves is 83 lb.

I use AI in my herd to bring fresh, leading edge genetics into my herd as well as yours. Three of my bulls have been sired by leading AI sires. I chose these sires for their moderate birth weights, excellent weaning weights and their carcass merits.

Thank you to all of the bidders and buyers from the previous Northern Alliance Sales! Your support is greatly appreciated. All Marberly Angus bulls sell with a bag of Green ANGUS RFID tags.

See you at the sale!



### BURNS LAKE VET CLINIC

**Dr Kim Beaudette and Dr Caroline Kuys**

Phone: 250-692-7476, Fax: 250-692-4150, Email: [blvetclinic@hotmail.com](mailto:blvetclinic@hotmail.com)  
2450 Fountain Road, Burns Lake, BC



Lot 608

# 608

## MARBERLY FREESTYLE 2F

January 04, 2018 / NXS 2F / 2034617

RITO 707 OF IDEAL 3407 7075 OSF  
**S A V RENOWN 3439** DMF DMF AMF CAF NHF OSF DDF  
 S A V BLACKCAP MAY 4136 CAF

MARBERLY WISE GUY 10W  
**MARBERLY BELLE 1Z**  
 DIAMOND D BELLE 50L

R R RITO 707 AMF CAF OHF NHF DDF  
 IDEAL 3407 OF 1418 076  
 S A V 8180 TRAVELER 004 DMF DMF AMF CAF OHF NHF OSF DDF  
 S A V MAY 2397 CAF

B C LOOKOUT 7024 DMF AMF CAF OHF NHF OSF DDF  
 MARBERLY MAYFLOWER LASS  
 YOUNKIN TRIUMPH 4966 DMF AMF CAF OHF NHF OSF DDF  
 NORTHLINE MISS BUXOM 320D

PERF	BW	Adj 205D
	79	667

EPDS	BW	WW	YW	MILK	TM	CED	CEM
	1.6	53	90	17	44	4	8

Freestyle 2F has been a great looking calf since birth. He is thick topped, sound footed and quiet to work around. His dam, NXS 1Z, is a moderate framed cow with correct feet and legs. She brings home a great calf each fall. Her last calf sold to Nicole Groot at the Shades of Autumn sale, and she was pretty special too. Renown is known for improving performance and skeletal correctness in his calves. His actual weaning weight was 845 lb on September 28, and his current weight is 1150 lb.



Lot 609

# 609

## MARBERLY FRANKLIN 5F

January 07, 2018 / NXS 5F / 2034619

CRESCENT CREEK CHISUM 12Z  
**CRESCENT CREEK 12Z CHISUM**  
 CRESCENT CREEK ERICA 192X

CUDLOBE C C & 7 55Y  
**MARBERLY IDELETTE 18C**  
 HAPPYVALE IDELETTE 4S

S CHISUM 6175 DMF AMF CAF OHF NHF OSF DDF  
 CRESCENT CREEK DUCHESS 51M  
 LOOKOUT HUCK 53T  
 YOUNG DALE ERICA 61P

SYDGEN C C & 7 AMF CAF OHF NHF OSF DDF  
 CUDLOBE MISS EMULOUS KMK 84T  
 L T 598 BANDO 9074 DMF AMF CAF OHF NHF OSF DDF  
 HAPPYVALE IDELETTE 6H

PERF	BW	Adj 205D
	69	745

EPDS	BW	WW	YW	MILK	TM	CED	CEM
	0.8	53	83	19	46	8	13

Franklin 5F is one of the best Chisum 6B bull calves I have produced. He does so many things well. He has a light birth weight and an excellent weaning weight; he posted my top 205 day weight with a weaning index of 115. 5F is correct and quiet to work around. His dam, NXS 18C, is a moderate cow with a beautiful udder and correct feet. 5F is 18C's second calf and she has done an exceptional job on this calf. Franklin 5F would be suitable to use on heifers. Actual weaning weight was 891 lb, and his current weight is 1070 lb.



Lot 610

# 610

## MARBERLY FLINT 10F

January 16, 2018 / NXS 10F / 2034624

S A V BRILLIANCE 8077 DMF AMF CAF OHF NHF OSF DDF  
**PVF INSIGHT 0129** DMF AMF CAF NHF OSF DDF  
 PVF MISSIE 790 DDF

REMINGTON PREDESTINED 7S DDF  
**KFC 7S BLACKCAP 1474Y**  
 MARBERLY BLACKCAP 3W

S A V BISMARCK 5682 DMF AMF CAF OHF NHF OSF DDF  
 S A V BLACKCAP MAY 5270 CAF  
 P V F NEW HORIZON 001 DMF AMF NHF DDC  
 P V F MISS RAPTOR 024

G A R PREDESTINED DMF AMF CAF OHF NHF OSF DDC  
 THOMAS LUCY 0764  
 MARBERLY CHIEF ALLIANCE 2T  
 ATLANTA ANNA 93S

PERF	BW	Adj 205D
	83	667

EPDS	BW	WW	YW	MILK	TM	CED	CEM
	1.3	50	87	21	46	7	6

Flint 10F was my favorite calf on pasture last summer. He is thick topped, deep sided, and structurally correct. His dam, KFC 1474Y, is a model Angus cow with a perfect udder and correct feet and legs. I kept her last calf, a full brother to 10F, to use in my herd. PVF Insight sires well balanced calves with moderate birth weights and strong growth. Insight also has strong carcass EPDs. His actual weaning weight on September 28 was 809, and his current weight is 1160 lb.

611

**MARBERLY FOREST 16F**

January 27, 2018 / NXS 16F / 2034627

EXAR GRIT 1025B AMF CAF NHF OSF DDF  
**MARBERLY PAY DIRT 3D**  
 MARBERLY BLACK VELVET 15R

CRESCENT CREEK 12Z CHISUM  
**MARBERLY MISS BURGESS 27D**  
 MARBERLY MISS BURGESS 2Y

EXAR WORLDWIDE 9600B DMF CAF OHF DDF  
 EXAR LADY BLANCHE 9739 NHF  
 MARBERLY CASPER 3N  
 WILD TURKEY OF N.B.A. 5J

CRESCENT CREEK CHISUM 12Z  
 CRESCENT CREEK ERICA 192X  
 BR MIDLAND DMF AMF CAF OHF NHF DDF  
 MARBERLY MISS BURGESS

PERC	BW	Adj 205D
	80	685

EPDS	BW	WW	YW	MILK	TM	CED	CEM
	2.7	51	85	16	42	3	6

Forest 16F is currently my highest gaining calf on feed this winter at just over 4 lb per day. He is long sided with good muscle expression. 16F was his dam's first calf and she did a great job on him. NXS 27D is moderate framed and good footed, she calved this year in early January. Pay Dirt 3D is a bull I bred and used on heifers and a few cows before selling him. His calves came easily and grew well. 16F's actual weaning weight was 712 lb, and his current weight is 1005 lb.



Lot 611

612

**MARBERLY FARLEY 21F**

February 01, 2018 / NXS 21F / 2034632

EXAR GRIT 1025B AMF CAF NHF OSF DDF  
**MARBERLY PAY DIRT 3D**  
 MARBERLY BLACK VELVET 15R

MARBERLY CHIEF ALLIANCE 2T  
**MARBERLY BLACKCAP 3W**  
 ATLANTA ANNA 93S

EXAR WORLDWIDE 9600B DMF CAF OHF DDF  
 EXAR LADY BLANCHE 9739 NHF  
 MARBERLY CASPER 3N  
 WILD TURKEY OF N.B.A. 5J

SITZ ALLIANCE 6595 DMF AMF CAF OHF NHF OSF DDF  
 GET-A-LONG DUCHESS 4159  
 A C REMINGTON  
 ATLANTA BLACKCAP 27J

PERC	BW	Adj 205D
	74	656

EPDS	BW	WW	YW	MILK	TM	CED	CEM
	-0.7	41	71	18	39	10	8

Farley 21F is smooth shouldered and long with a smaller birth weight. His dam, NXS 3W, is a good cow with sound feet. She consistently produces top end calves, and I have kept most of her heifer calves as replacements. Pay Dirt 3D is a good son of the AI sire EXAR Grit. The Grit daughters in my herd are sound, hardworking cows with tidy udders. 21F would be suitable for use on heifers. His actual weaning weight was 752 lb, and his current weight is 1060 lb.



Lot 612

613

**MARBERLY FLOYD 22F**

February 01, 2018 / NXS 22F / 2034631

BALDRIDGE WAYLON W34 AMF CAF NHF DDF  
**BALDRIDGE DOWNLOAD 2013** DMF AMF CAF NHF OSF DDF  
 BALDRIDGE BLOSSOM U51 NHF DDF

HARB PENDLETON 765 J H DMF AMF CAF OHF NHF OSF DDF  
**MARBERLY MISS BURGESS 11A**  
 MARBERLY MISS BURGESS 4W

GAR-EGL PROTEGE DMF AMF CAF OHF NHF OSF DDF  
 BALDRIDGE BLACKCAP T163  
 S S OBJECTIVE T510 OT26 DMF AMF CAF OHF NHF OSF DDF  
 BALDRIDGE BLOSSOM S325

S A V FINAL ANSWER 0035 DMF AMF CAF OHF NHF OSF DDF  
 H A R B BLACK LADY 375 J H  
 MARBERLY CHIEF ALLIANCE 2T  
 MARBERLY MISS BURGESS

PERC	BW	Adj 205D
	86	676

EPDS	BW	WW	YW	MILK	TM	CED	CEM
	1.9	44	78	27	49	9	12

Floyd 22F is a thick topped, deep sided, correct calf. He is currently my second highest gaining calf on feed this winter at 3.8 lb per day. His dam, NXS 11A, is good cow who milks well and brings home a good calf in the fall. I kept her last heifer calf as a replacement. Download is an AI bull who sires calves with lower birth weights and excellent growth. He has good carcass EPDs as well. 22F's actual weaning weight on September 28 was 774 lb, and his current weight is 1100 lb.



Lot 613



Lot 614

# 614

**MARBERLY FELIX 30F**

February 22 2018 / NXS 30F / pending

CRESCENT CREEK CHISUM 12Z  
**CRESCENT CREEK 12Z CHISUM**  
CRESCENT CREEK ERICA 192X

MOHNEN LONG DISTANCE 1639  
**MARBERLY 11B**  
MARBERLY BELLE 1Z

S CHISUM 6175  
CRESCENT CREEK DUCHESS 51M  
LOOKOUT HUCK 53T  
YOUNG DALE ERICA 61P

MOHNEN BRUSHPOPPER 295  
BALDRIDGE BLACKBIRD M565  
MARBERLY WISE GUY 10W  
DIAMOND D BELLE 50L

PERF	BW	Adj 205D
93		

EPDS	BW	WW	YW	MILK	TM	CED	CEM

Felix 30F is a really stout son of my walking bull Chisum 6B. 30F is thick topped with great muscle expression and sound feet. He grew very well on pasture this summer. His dam, NXS 11B, is a hard working cow with extra length and capacity. She is correct on her feet and has a strong udder. 30F's actual weaning weight was 767 lb, and his January 31 weight was 1000 lb.



Lot 615

# 615

**MARBERLY FINNLEY 32F**

February 24, 2018 / NXS 32F / 2034637

CRESCENT CREEK CHISUM 12Z  
**CRESCENT CREEK 12Z CHISUM**  
CRESCENT CREEK ERICA 192X

A C REMINGTON  
**ATLASTA ANNA 93S**  
ATLASTA BLACKCAP 27J

S CHISUM 6175 DMF AMF CAF QHF NHF OSF DDF  
CRESCENT CREEK DUCHESS 51M  
LOOKOUT HUCK 53T  
YOUNG DALE ERICA 61P

GDAR SVF RUSS 184B  
CHARTERED EMULOUS LADY D319  
ALSIKE ACRES EX NITRO BLAST 3F  
MLA BLACKCAP 20'91

PERF	BW	Adj 205D
83		695

EPDS	BW	WW	YW	MILK	TM	CED	CEM
	2.2	45	75	13	36	5	9

Finnley 32F is a good calf out of one of my favorite cows, 93S. Anna 93S consistently produces a good calf each fall, she is 13 years old and has a very good Density son this year. 93S is an angular, long sided cow with a strong udder and small teats. 32F is a correct and free moving son of my walking bull Chisum 6B. My Chisum daughters all calved easily and bred back quickly. If you are looking to keep replacement females 32F is the bull for you. His actual weaning weight was 699, and his current weight is 935 lb.



Sire of Lot 616

# 616

**MARBERLY FLEETWOOD 35F**

March 07 2018 / NXS 35F / pending

CRESCENT CREEK CHISUM 12Z  
**CRESCENT CREEK 12Z CHISUM**  
CRESCENT CREEK ERICA 192X

K C F BENNETT TOTAL  
**MARBERLY MISSIE 3B**  
GEIS MISSIE 196'04

S CHISUM 6175  
CRESCENT CREEK DUCHESS 51M  
LOOKOUT HUCK 53T  
YOUNG DALE ERICA 61P

SITZ ALLIANCE 6595  
EXT OF CONANGA 6790  
YOUNG DALE GABRIEL 7L  
RON'S MISSIE 34C

PERF	BW	Adj 205D
88		

EPDS	BW	WW	YW	MILK	TM	CED	CEM

Fleetwood 35F is thick topped, long sided calf that grew very well on pasture last summer and posted my second highest 205 day weight. He is my youngest bull being a March calf. His dam, NXS 3B, is becoming a top end cow. She is very correct and easy fleshing with a very tidy udder. 35F will be the last Chisum 6B son to sell, as I lost the bull to an injury. His actual weaning weight was 749 lb, and his January 31 weight was 1025 lb.



**www.smprv.ca**  
**1-800-665-3151**

**SMP**  
RV



**SMP**  
GMC

**SULLIVAN MOTOR PRODUCTS**  
*HOUSTON, BC*

**1-877-410-6214**



Peterbilt of Houston, BC



Ph. 250-845-0061 1-877-545-0063

2226 North Nadina Ave.

PO Box 730 Houston, BC V0J 1Z0

Fax: 250-845-0062

Mobile Service  
Units Available



All your  
needs

EQUIPMENT SALES



SERVICE

  
**Peterbilt of Houston, BC**  
Division of  
**PACIFIC**  
TRUCK & EQUIPMENT INC.  
Ph. 250-845-0061 1-877-545-0063

PARTS



Pull through  
Service bays

24 hr DEF  
Station

Licensed  
Inspection  
Facility

TRUCK SALES



In Store  
Specials

Authorized

Paccar &  
Cummins  
Dealer



Located right off HWY 16

2226 N Nadina Ave., Houston, BC V0J 1Z0

Open Monday –Saturday

Offering full range of services: Parts inventory, Sales and Service  
Paccar and Cummins Consumer

24 hr DEF Station

Website address: [www.pacifictruck.ca](http://www.pacifictruck.ca)

# GLOSSARY OF TERMS

## ***Expected Progeny Difference (EPD):***

Is the prediction of how future progeny of each animal are expected to perform relative to the progeny of other animals listed in the database. EPDs are expressed in units of measure for the trait, plus or minus. Interim EPDs may appear on young animals when their performance has yet to be incorporated into the American Angus Association National Cattle Evaluation (NCE) procedures. This EPD will be preceded by an "I", and may or may not include the animal's own performance record for a particular trait, depending on its availability, appropriate contemporary grouping, or data edits needed for NCE.

## ***Birth Weight EPD (BW):***

Expressed in pounds, is a predictor of a sire's ability to transmit birth weight to his progeny compared to that of other sires.

## ***Weaning Weight EPD (WW):***

Expressed in pounds, is a predictor of a sire's ability to transmit weaning growth to his progeny compared to that of other sires.

## ***Yearling Weight EPD (YW):***

Expressed in pounds, is a predictor of a sire's ability to transmit yearling growth to his progeny compared to that of other sires.

## ***Maternal Milk EPD (Milk):***

Is a predictor of a sire's genetic merit for milk and mothering ability as expressed in his daughters compared to daughters of other sires. In other words, it is that part of a calf's weaning weight attributed to milk and mothering ability.

## ***Total Maternal EPD (TM):***

The expected overall difference in weaning weight pounds of calves out of a bull's daughters compared to calves from daughters of a bull with a zero EPD for total maternal. The total maternal EPD is a measure of both growth and milking ability and is an indication of the size of calf a bull's daughter will wean. The maternal milk EPD is combined with half of the weaning growth EPD to produce the total maternal EPD. This is a prediction of the total genetic influence that a sire will have on his daughter's progeny.

## ***Calving Ease Direct (CED):***

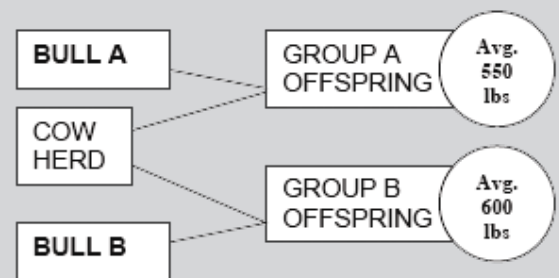
Is expressed as a difference in percentage of unassisted births, with a higher value indicating greater calving ease in first-calf heifers. It predicts the average difference in ease with which a sire's calves will be born when he is bred to first-calf heifers.

## ***Calving Ease Maternal (CEM):***

Is expressed as a difference in percentage of unassisted births with a higher value indicating greater calving ease in first-calf daughters. It predicts the average ease with which a sire's daughters will calve as first-calf heifers when compared to daughters of other sires.

## ***How Do I Use EPDs?***

Imagine you are interested in purchasing a couple of bulls for your herd. You are looking at the EPDs in a sale catalogue. Bull A has a weaning weight (WW) EPD of +10 and Bull B has a WW of +60. What does that mean? How can you use those EPDs to choose between the two bulls? If these animals were randomly mated with 10 similar cows, we would expect the group average weaning weight of Bull A's offspring to be 50 lbs lighter than that of Bull B's (60-10=50). So, if you were interested in producing heavier calves, Bull B would be the one to choose. Remember, EPDs evaluate group average and offspring's performance. They cannot predict individual performance or weights.



Average Black EPDs	BW	WW	YW	Milk	TM	CE	MCE
	+2.1	+45	+80	+21	+43	+3.5	+6.6
Average Red EPDs	BW	WW	YW	Milk	TM	CE	MCE
	-0.4	+53	+78	+17	+44	+3.4	+4.0



RED MOON ANGUS  
10114 Snell Road West  
Vanderhoof, B.C.  
V0J 3A2



[www.northernalliancebullsale.com](http://www.northernalliancebullsale.com)