



GENETIC **EDGE**

PROVEN, INFLUENTIAL, FOUNDATION CHAROLAIS GENETICS

November 28, 2018 | Olds, Alberta, Canada
MCLEOD LIVESTOCK | SPRINGSIDE FARMS

Sale Day Phones

Rod McLeod (403) 540-7986
Mike Panasiuk(250) 832-8209
Colby McLeod(403) 801-7985

Sale Staff

Brent Carey, AUCTIONEER(403) 650-9028
Craig Flewelling, RINGMAN(403) 556-0515
Mark Stock, RINGMAN(403) 357-8104

Special Representatives

Helge By, CHAROLAIS BANNER(306) 536-4261
Craig Scott, CHAROLAIS BANNER.....(403) 651-9441
Larry Toner(306) 834-7652
Roger Peters(403) 828-9815

Schedule of Events

TUESDAY, NOVEMBER 27, 2018

6:00 p.m. - 9:00 p.m.

Food, refreshments & cattle viewing

WEDNESDAY, NOVEMBER 28, 2018

10:00 a.m. - Cattle available for viewing

12:00 p.m. - Lunch

2:00 p.m. - **GENETIC EDGE SALE**

Online Viewing & Bidding

www.dlms.ca

Mark Shologan(780) 699-5082

U.S. Exchange

U.S. money will be accepted at the current rate of exchange on sale day and will be announced prior to the sale.

Terms & Conditions

The sale will be conducted under the Canadian Charolais Association terms & conditions.



GENETIC EDGE

November 28, 2018

2:00 | Olds Cow Palace

Sale Location

Olds Cow Palace

From Hwy #2, go west on Hwy #27, south on Hwt #2A, west on 54 Street past Olds Auction Mart, located on the right hand side.

Lodging

Best Western Inn, Olds, AB(403) 556-5900

Ramada, Olds, AB(403) 507-8349

Pomerory Inn, Olds, AB(403) 556-8815

Insurance

Karen Bouchard

Stockmen Insurance(403) 501-1326

Export Costs

Export tests & paperwork will be done by Springside Farms or McLeod Livestock, all costs associated with exporting will be that of the buyers'. Springside Farms or McLeod Livestock will help with the arrangement of transportation but all costs will be that of the buyers'.

Junior Incentive 10% DISCOUNT

Any junior member (under 21 years of age) that purchases an animal at the sale will receive a 10% discount on their purchases. These animals must be transferred into the junior members name at the CCA.

Welcome



In my mind I've always jokingly thought that if I ever raised a National Champion I would start planning my dispersal; however, I'm not ready to retire and having way too much fun. Instead I thought, "Why not have a female sale?" So when Rod approached me to move forward with this opportunity, I couldn't help but be ecstatic! McLeod Livestock has had as much success in the show ring over the past few years of anyone I know and it is an honor and a privilege to join forces with someone of such magnitude in this breed.

With over three decades of experience in this breed, I have seen the highs and the lows in the demand for Charolais cattle. I truly believe that this breed is at an all time high and the infection for Charolais cattle is greater than I've ever seen in my entire life. What better time to buy a Charolais female than the present?

This sale is a culmination of 34 years experience in this breed and I honestly feel like we are putting our best foot forward with these females here today. We have worked hard over the past several years honing our genetic program and securing some profound accomplishments. Springside Farms bred and raised the 2016 Canadian National Champion Bull, Chuckwagon, and the 2017 Reserve National Champion Female, Jessicah. We also had the 2017 high selling yearling bull sale average while maintaining a position in the top five bull sales in Canada for the last three years running. I am so proud of these accomplishments and want to say thank you to everybody that helped to shape and meld what SOS is today and pave the road to an even greater future. I feel like this is an opportune time to share some of our best genetics with other breeders in this inaugural Alberta sale.

Please be our guest in Olds the Wednesday after Agribition where we are proud to showcase and share a piece of our program with you, our Charolais friends. We are looking forward to seeing everyone there. Welcome to The Edge '18.

Mike

SPRINGSIDE FARMS | MIKE PANASIUK | www.springsidefarms.com | mike.springsidefarms@gmail.com | 250-832-8209



Well the kids are grown up, finished University, starting businesses of their own and the cowherd continues to grow....Well it's time to slow down just a little and reduce our numbers to be more manageable for our land base.

When we started planning this sale we wanted it to be special! We wanted to show Charolais breeders what we have been up to since 2004 when we purchased 2 Charolais heifer calves for our kids. Plus, we wanted to show the true value a superior donor cow can have on a program and the cow family you can build with the right cow. It is not a coincidence that of the 28 animals that we have on offer in this sale that 27 of them are descendants of Target PLD Ginny 40P, one of those first 2 heifer calves we bought for the kids in 2004. And I will tell you this, we practice what we preach as the reason we bought Ginny 40P was because of her great mother, Target Pld Ginny 26G who herself was an Agribition and FarmFair Supreme Champion Female.

When we were trying to decide how to showcase our breeding program, we felt the best way was to offer our entire bred heifer pen so that breeders could see the type of production that our extensive embryo transplant program has produced over the last 10 years. It all sounded good in the spring to say we were offering our entire bred heifer pen but I will be honest, the closer we get to the sale and when I walk out through the heifer pen, I am truly regretting the thought of not having these powerhouse heifers in our pasture to continue the genetics of their cow families.

It has been refreshing to work with Mike from Springside Farms. He is the eternal optimist and brings great enthusiasm to the Charolais breed and his great breeding program.

We welcome you all to Olds, AB on November 27 and 28 or plan to come by the farm if you would like to see the cattle in advance.

Rod & April

MCLEOD LIVESTOCK | ROD & APRIL, COLBY AND MEGAN MCLEOD | www.mcleodlivestock.com | rodmc1@telus.net | 403-540-7986

a sample of THE DAMS BEHIND the Bull Calves

It started back in 1991 when I was just getting my feet wet and Dale Norheim took a chance on me and we split a flush out of NOR Miss Anna 221M. From this flush came the first homozygous red bull in Canada and sterling collection high seller SOS Red Warrior 5A. It was the start of a great friendship (you know what I mean) and an addiction for the breed. Some 10 years later we had an extremely successful flush on a P-3 cow and from that flush came SOS Polled Detonator 8M. With some 189 daughters still in production in 2018, this bull has stood the test of time.

Fast forward to 2015 when we did something nerve wracking and totally outside our comfort zone. We offered pick of our bull calves at the Alberta Select. That day SOS Chuckwagon 54C was crowned champion individual bull and lead off bull in our champion pen of 3 bulls in the show earlier that day. He was selected by McKeary Charolais at \$61,000 and was off to the Royal the next Fall where he was slapped Canadian National Champion Bull.

Along with these accomplishments and our strong AI lineup we used a bull, and still use BKJ Chavez 826Y, who we purchased from the great Winn Man herd in Manitoba. He has been a mainstay here at SOS producing such sons as Hooey, Gaucho and Homegrown that are blazing their own trails.



MXS 241Z



SOS 266A



ALT 28X



SOS 57B

CHUCK WAGON



HOME GROWN



GAUCHO



HOOEY



PICK of the 2018 **SPRINGSIDE** **Bull Calves**

OPPORTUNITY KNOCKS!

2018 is proving to be an exciting year here at SOS. Some 280 cows were AI'd and implanted to start calving January 1. We have 97 replacement heifers in the pen and 101 bull calves were weaned September 2 to average a remarkable 793lbs in these adverse drought conditions. We are proud to offer **PICK OF THE 2018 BULL CALF CROP** at The Edge 2018!

We feel there is something for every discriminating breeder to select from. Performance minded, heifer bulls, red factor, homozygous polled, or show bulls are just a few categories that come to mind. Bloodlines such as Gusto, Chuckwagon, Chavez, Hooey, Zeal, Ledger, Symbol, Sundance, and Grizzly are just a few of the sires in this bull pen. We will do our best to help you along with your selection and are excited to work alongside the new owner to promote this bull to his utmost potential.

There is no wrong decision here. Come as often as you would like to see the offering and their dams. Ranching is our only source of income and these cows have to work hard, plain and simple. This has been our philosophy all along and want to do our best to take your operation to the next level!

**SELLING ¾ INTEREST
FULL POSSESSION**

**TERMS AND CONDITIONS
TO BE ANNOUNCED SALE DAY.**



SOS SPRINGSIDE'S ADELE 167Z

POLLED | SOS 167Z | January 25, 2012 | PFC396613

MERIT 5323R
HTA ICE 19X
HTA BRIDGET PLD 201M

HTA CROWN PRINCE 152L
SOS PRINCESS HANNIS 188R
EFH DAISY MAE 30J

CE	BW	WW	YW	MILK	MTL
-3.3	4.7	46	101	19	42

There are so many ways a breeder can go with 167Z. She truly has done it all! From producing national class winners, sale toppers with most of her sons working in purebred herds, to outstanding daughters in our herd. She has had a stellar flush career producing 48 #1 embryos in two flushes. This is a rare opportunity to purchase a cow in the prime of her life, mated to the 2016 Canadian National Champion SOS Chuckwagon 54C! Be a leader, not a follower and take this great cow home on November 28th. **BRED SOS CHUCKWAGON 54C ON MARCH 24TH.**



2 LOTS OF 3 GRADE A EMBRYOS CHAVEZ X ADELE

MERIT 7329T
WINN MANS CHAVEZ 826Y
WINN MANS BREATHLESS 826U

HTA ICE 19X
SOS SPRINGSIDE'S ADELE 167Z
SOS PRINCESS HANNIS 188R

Two lots of 3 grade A BKJ Chavez 826Y x SOS Adele 167Z embryos with a guarantee of 1 pregnancies if performed by an accredited veterinarian.



SOS SAVORY 99E

POLLED | SOS 99E | January 28, 2017 | PEFC731311

MERIT 7329T
WINN MANS CHAVEZ 826Y
WINN MANS BREATHLESS 826U

HTA ICE 19X
SOS SPRINGSIDE'S ADELE 167Z
SOS PRINCESS HANNIS 188R

CE	BW	WW	YW	MILK	MTL
0.0	2.8	51	103	15	41

Look for Savory 99E to add a lot of spice to your breeding program. A daughter of Chavez, who needs no introduction to the Charolais world, and our flush cow Lot 2. Trademark Chavez hair, disposition, fertility, and mated to the 2015 Canadian National Reserve Champion SVY Grizzly 521C. Definitely a cornerstone female and watch for her at the major fall shows. **BRED SVY GRIZZLY 521C ON APRIL 4**



SOS HOMEGROWN 15C - SON OF LOT 2 & FULL SIB TO LOT 3
(pictured as a calf)



SOS GRASSROOTS 113E - FULL SIB TO LOT 3



4

ANCHOR ZENA 24Z

POLLED | WEA 24Z | April 01, 2012 | PFC396843

CMF 192 WRANGLER 256
ANCHOR WRANGLER 14W
ANCHOR RENA 23R

LT BLUEGRASS 4017 P
ANCHOR XEMA 8X
ANCHOR NANCY 18N

CE	BW	WW	YW	MILK	MTL
13.9	-4.1	45	76	19	42

Anne had one heck of a cowherd! Thanks for the huge opportunity to acquire your cows and here is your chance to add 24Z to your program! Build a cow family around this one, its money in the bank. **BRED SOS HOMEGROWN 15C ON MARCH 21ST.**

If Kody Meier didn't say 100 times to me, "I can't believe you're selling Gaucho's mom," then he didn't say it once. Here is one FRONT PASTURE FEMALE! She is the dam of the 2016 National Class winner and only Charolais bull in the 2017 RBC Top 10 at Agribition, SOS Gaucho 139D! She came to us from Rob and Anne Willis, Anchor Ranch, Clinton, BC as a bred heifer when we purchased their entire herd, and what an addition she turned out to be. Rob and

5

SOS VAVA PLD 165E

TWIN | POLLED | SOS 165E | March 04, 2017 | PFC733030

HTA SENATOR 8130U
HTA BRADACK 137Y
HTA BRIDGET (R) 577R

ANCHOR WRANGLER 14W
ANCHOR ZENA 24Z
ANCHOR XEMA 8X

CE	BW	WW	YW	MILK	MTL
7.0	-0.2	48	92	25	49

A daughter of 24Z, Lot 4 and HTA Braddack 137Y. Anyone at the Sandan dispersal can attest to the job Braddack did for Ursula. He quite likely made her in excess of a million dollars and the Braddack females were in hot demand that day! Huge opportunity once again with 165E. No guess work here, she will lay down and hit a homerun time and time again.
BRED BKJ CHAVEZ 826Y ON APRIL 4TH.



SOS GAUCHO 139D - SON OF LOT 4



SOS GAUCHO 139D - 2017 RBC TOP 10 FINALIST



SOS HONEY MOO MOO 43C - MATERNAL SIB TO LOT 5



HTA BRADACK 137Y - SIRE OF LOT 5



6

SOS GRL PWR 142F

POLLED | SOS 142F | February 22, 2018 | PFC751141

WINN MANS CHAVEZ 826Y
SOS HOME GROWN 15C
SOS SPRINGSIDE'S ADELE167

SVY PILGRIM PLD 655S
ALT AGUSTINA 73Y
ALT BONDAGE 107S

CE	BW	WW	YW	MILK	MTL
-2.0	3.6	55	101	18	45

BIG TIME GENETICS!

Altwasser Charolais is a name synonymous with BC Charolais and Keith and Cheryl truly were the best ambassadors of the great breed. We enjoyed countless sessions around the kitchen table and Cheryl's great cooking when we purchased their entire herd a few years back, so thanks for the opportunity Keith and Cheryl! Needless to say, by far one of our greatest acquisitions, ALT 73Y has come to the top of our herd and this female could easily go into a flush program. Her Chavez daughter SOS Dirty Laundry 155D was a national class winner and topped the Alberta Select when she sold to Jeff and Jacob McAfee in New Brunswick. This year in her first flush she produced eleven #1 embryos. At side is her flashy homegrown daughter, 142F, that you will certainly pick out in our fall show string.



6A

ALT AGUSTINA 73Y

POLLED | ALT 73Y | January 22, 2011 | PFC387406

SVY PIONEER 402P
SVY PILGRIM PLD 655S
HFCC FRENCHKISS 919J

HFCC PLD BOND 19L
ALT BONDAGE 107S
ALT CREAM SODA 1K

CE	BW	WW	YW	MILK	MTL
-3.2	3.1	50	84	22	47

BRED SOS HOMEGROWN 15C ON APRIL 30

7

SOS FRENCH KISS PLD 172E

POLLED | SOS 172E | March 17 2017 | PFC733029

PCC NAVIGATOR 403P
CSS SIR NAVIGATOR 20Y
CSS LADY FATHOM 21T

SVY PILGRIM PLD 655S
ALT AGUSTINA 73Y
ALT BONDAGE 107S

CE	BW	WW	YW	MILK	MTL
-1.6	3.5	42	76	21	42

Another daughter of Lot 6A, SOS French Kiss 172E. This Navigator female has mama cow written all over her. This choice lot is left up to the buyer's discretion. We are selling 2 out of 3 of these females and taking the other one back home to keep this strong cow family going. There is no wrong decision here!
BRED BKJ CHAVEZ 826Y ON APRIL 9TH.

Selling pick of 2 out of 3
LOT 6, 6A & 7



SOS DIRTY LAUNDRY 155D - DAUGHTER OF LOT 6A,
MATERNAL SIB TO LOT 6 & 7

Selling pick of 2 out of 3



SOS CHATTER 57D

POLLED | SOS 57D | January 18 2016 | PFC709241

WINN MANS LANZA 610S
SPARROWS KINGSTON 139Y
SPARROWS DELIGHT 374P

SDC TIME OUT 88T
SOS MISS WHISTLER 31X
SOS PETUNIA 9T

CE	BW	WW	YW	MILK	MTL
2.4	2.1	35	74	26	44

We really needed to include a couple of Kingston daughters in this offering, and why not a pair of red factor full sisters? SOS 57D did a bang up job on her first calf by Zeal, SOS 39F! **BRED SOS HOMEGROWN 15C ON MARCH 27TH.**



SOS CAMILLA 39F

POLLED | SOS 39F | January 14 2018 | PFC750692

CEDARDALE TYRANT 31T
CEDARDALE ZEAL 125Z
CEDARDALE MISS 64T

SPARROWS KINGSTON 139Y
SOS CHATTER 57D
SOS MISS WHISTLER 31X

CE	BW	WW	YW	MILK	MTL
4.7	0.0	39	72	18	37



SOS DAPHNE 96E

POLLED | SOS 96E | January 27 2017 | PFC732584

WINN MANS LANZA 610S
SPARROWS KINGSTON 139Y
SPARROWS DELIGHT 374P

SDC TIME OUT 88T
SOS MISS WHISTLER 31X
SOS PETUNIA 9T

CE	BW	WW	YW	MILK	MTL
1.5	3.1	35	75	26	43

Don't overlook Lot 8's full sister SOS 96E as she is a pen favorite of many who have toured this summer and fall. She is by far the quietest bred heifer in the offering. We really admired their dam 31X, a big ribbed, tanky, soft made Timeout daughter. We would also love to keep this cow family going at our place so you be the judge sale day and we will take one of these three females home. **BRED BKJ CHAVEZ 826Y ON APRIL 6TH.**



SOS KHALEESI 57B

POLLED | SOS 57B | February 04 2014 | PFC409230

HTA ICE 19X
VFF VIKSE ICE 189Z
SOS DARK ANGEL 95U

SPARROWS SANCHEZ 715T
SDC BACHOLERETTE 44W
SOS BACHOLERETTE 41N

CE	BW	WW	YW	MILK	MTL
2.6	2.4	35	72	23	41

ones and the great ones and SOS Khaleesi is destined to be a great one. **BRED TO SOS HOOEY PLD 127D ON MARCH 29TH.**



SOS KHALASAR PLD 87F

POLLED | SOS 87F | January 23 2018 | PFC750699

WINN MANS CHAVEZ 826Y
SOS HOOEY PLD 127D
FFBB ABBI 307A

VFF VIKSE ICE 189Z
SOS KHALEESI 57B
SDC BACHOLERETTE 44W

CE	BW	WW	YW	MILK	MTL
2.9	2.1	42	82	17	38

CHUCKWAGON'S SISTER!
This potential DONOR CANDIDATE is just getting to the prime of her life. As a two year old she raised and outstanding high-dollar Kingston son selling to Kelly Brimner. Then in 2017 her Chavez son was a high seller going to Jim Bower at the Great Gadsby ranch. We really appreciate the Vikse Ice daughters and their ability to produce. There's a fine line between the good

The Hooey calves stuck out in the pasture all summer and 87F is no exception. Hooey topped our bull sale in 2016 at \$40,500, selling to McTavish Charolais in Moosomin and we knew he would be an integral part of our AI program. He did not disappoint! This pair will make your mouth water.



SOS AUTUMN DAY 56E

POLLED | SOS 56E | January 20 2017 | PFC731267

WINN MANS CHAVEZ 826Y
SOS HOME GROWN 15C
SOS SPRINGSIDE'S ADELE167

CSS SIR GRIDMAKER 2W
ALT AUTUMN 108Z
ALT AUTUMN 108S

CE	BW	WW	YW	MILK	MTL
1.3	3.6	50	95	15	39

FLAT! OUT! GOOD!

SOS Autumn Day 56E is a super prospect and future donor cow. This angular, free moving, clean fronted, great footed female will attract a lot of attention this fall on the show road and is destined to be a front pasture female! She already is the 2018 Olds Fall Classic Reserve Grand Champion female. You will be hard pressed to find a female this complete and she is a must to own. **BRED TO THE 2015 CANADIAN NATIONAL RESERVE CHAMPION BULL SVY GRIZZLY 521C ON APRIL 12.**



ALT AUTUMN 108Z - DAM OF LOT 11



SOS BRIDGET 133E

POLLED | SOS 133E | February 04 2017 | PEFC731346

SILVERSTREAM GEDDES G102
SOS CHUCK WAGON 54C
SDC BACHOLERETTE 44W

M6 GRID MAKER 104 PET
HTA BRIGET 12R
HTA BRIDGET PLD 102L

CE	BW	WW	YW	MILK	MTL
6.8	0.9	40	82	24	44

Direct from the ET program and daughter of the 2016 Canadian National Champion bull SOS Chuckwagon 54C comes SOS Bridget 133E. This female is a powerhouse, awesome footed, deep, angular, and her udder looks impeccable. Watch for her this fall in our show string. **BRED TO BKJ CHAVEZ 826Y ON APRIL 10TH.**



SOS CHUCK WAGON 54C - SIRE OF LOT 12
(pictured as a calf)



GE
13

SOS PRINCESS PLD 44E

POLLED | SOS 44E | January 18 2017 | PEF731338

WINN MANS CHAVEZ 826Y P-3 PERFECT LAD 0-17K
WOOD RIVER COUNTRY BOY 54W **WOOD RIVER PRINCESS 28N**
 SOS SPRINGSIDE'S ADELE167 WOOD RIVER SHANIA 39J

CE	BW	WW	YW	MILK	MTL
4.9	0.4	40	70	20	40

dam 28N, who anchored our successful ET program for many years. If you check her out on the Charolais website, 28N has 34 offspring working in prestigious herds right across North America. We are proud of the Princess cow line here at SOS. This female is destined to be at the front pasture of any operation anywhere. She's attractive, long, and is already heavy in calf to the one and only Chavez! **BRED BKJ CHAVEZ 826Y ON MARCH 31ST.**



WOOD RIVER PRINCESS 28N - DAM OF LOT 13



WOOD RIVER PRINCESS 13Y - FULL SISTER TO LOT 13



GE
14

SOS MOANA PLD 132E

POLLED | SOS 132E | February 04 2017 | PFC732596

MERIT 7329T VFF TIME OUT 172Y
WINN MANS CHAVEZ 826Y **SOS DROP IT LIKE ITS HOT 137B**
 WINN MANS BREATHLESS 826U SOS VICTORIA 32T

CE	BW	WW	YW	MILK	MTL
2.0	2.2	51	98	14	39

A pasture favorite all summer long to anyone that saw her and I'm sure you will agree. These Chavez daughters are real collectors items. SOS Moana 132E has a flawless profile, pretty head, clean fronted, long bodied, sound footed, and has a great udder developing. A maternal sister, 64D sold to good friend and great Charolais enthusiast, Cole Parsons, and she weaned his heaviest bull calf at 860lb as a two year old. **BRED TO THE 2016 RESERVE NATIONAL CHAMPION BULL SVY GRIZZLY 521C ON APRIL 11TH.**



GE
15

SOS FRANCINE 58F

POLLED | SOS 58F | January 14 2018 | PFC750703

SILVERSTREAM GEDDES G102 VFF TIME OUT 172Y
SOS CHUCK WAGON 54C **SOS DROP IT LIKE ITS HOT 137B**
 SDC BACHOLERETTE 44W SOS VICTORIA 32T

CE	BW	WW	YW	MILK	MTL
3.9	2.1	44	86	17	39

Check out Lot 14's maternal sister SOS 58F. When a cow is mated three ways and has hit a homerun every time, you know you are on to something. Only because 137D will be in the herd for many years to come, are we able to dig so deep in this cow family. Oh, and I forgot to mention, grand dam SOS Victoria 32T is a maternal sister to Chuckwagon's dam SOS 44W. **POWER in the BLOOD!**



16

SOS ANNETTE 55E

POLLED | SOS 55E | January 20 2017 | PFC732380

WINN MANS LANZA 610S
SPARROWS KINGSTON 139Y
SPARROWS DELIGHT 374P

SOS POLLED DETONATOR 8M
SOS SITTIN PRETTY 3C
ANCHOR SOS ANNETTE 15A

CE	BW	WW	YW	MILK	MTL
10.6	-2.8	36	73	31	49

mating to Chavez will allow her to calve extremely easily, yet maintain a very marketable product.

BRED TO BKJ CHAVEZ 826Y ON APRIL 10TH.



17

SOS MONTANNA PLD 61F

POLLED | SOS 61F | January 16 2018 | PFC750696

CJC SYMBOL Y771 P
CJC SYMBOL B1067P
CJC MS COBALT X282

ERIXON'S SPITFIRE 127T
MXS HANNA 993W
MXS HANNA 512R

CE	BW	WW	YW	MILK	MTL
1.0	3.7	52	95	15	41

a Charolais female as you will find! Great body, super big foot, loads of milk, and awesome fertility. SOS Montanna 61F is a clone of her mother, only white! The only Symbol female in the sale, she won't disappoint.



18

MXS MEGAN 820F

POLLED | MXS 820F | January 24 2018 | PFC740422

SPARROWS ALCATRAZ 18N
SVY GRIZZLY PLD 521C
SVY SADIRA 155Y

SVY AD INVINCIBLE P 748T
MXS MEGARA 58X
MXS MEGARA 429P

CE	BW	WW	YW	MILK	MTL
7.0	-0.6	30	63	22	37

hairy, and thick. She will look great on the end of a halter this fall and become a producer down the road. Her dam 58X is a no miss female and has raised seven January calves thus far.



19

MXS SPITFIRE'S MAID 803F

POLLED | MXS 803F | January 17 2018 | PFC739854

SPARROWS ALCATRAZ 18N
SVY GRIZZLY PLD 521C
SVY SADIRA 155Y

ERIXON'S SPITFIRE 127T
MXS SPITFIRE'S MAID 27X
MXS WISDOM'S MAID 141L

CE	BW	WW	YW	MILK	MTL
5.7	1.2	32	68	19	35

donor pen next year. This choice lot is very exciting for us. We would love you to pick the heifer you like and we'd gladly take the other one home for our herd. These MXS heifers are sure to be money makers.

Take your pick... lot 18 or 19



GE
20

SOS FANTASIA 30F

POLLED | SOS 30F | January 09 2018 | PFC753607

CEDARDALE TYRANT 31T
CEDARDALE ZEAL 125Z
CEDARDALE MISS 64T

GERRARD PASTOR 35Z
MVY RHONDA 11D
MVY RHONDA 1Y

CE	BW	WW	YW	MILK	MTL
5.6	-0.6	46	80	20	43

SOS Fantasia 30F came in dam from last fall's Sterling Collection. Her Pastor dam 11D is unbelievably quiet and has an impeccable udder. Thank you to McAvoy Charolais for making this impressive female available. Larry Toner called me and said, "there is a McAvoy heifer, 11D you should own!" I said, "Sure!" and gave him a budget thinking I wouldn't be able to afford her. Low and behold Larry texts me that I got the heifer! Good thing I was sitting down because I would have fallen over. 30F was born small, grew fast, quiet as a church mouse, and is dropping a perfect udder even as a heifer calf. I see great things in this female's future and one that we would circle very highly in the sale.



GE
21

SOS MADELAINE 834F

POLLED | SOS 834F | February 02 2018 | PFC741266

CEDARDALE TYRANT 31T
CEDARDALE ZEAL 125Z
CEDARDALE MISS 64T

SILVERSTREAM GEDDES G102
MXS MEG 516C
MXS MEGARA 58X

CE	BW	WW	YW	MILK	MTL
-0.9	4.2	55	96	10	38

One rip of a Zeal heifer calf, SOS 834F is a standout! This big time performance heifer is wide hipped, very well muscled, and super quiet. Her dam 516C is also very quiet and the first one to come for grain when we are moving the herd. 516C is a Geddes daughter out of 58X, the dam of lot 18. If you like big and quiet then check out SOS Madelaine 834F.



GE
22

SOS ANGELICA 43F

HORNED | SOS 43F | January 11 2018 | FC750693

WINN MANS CHAVEZ 826Y
SOS HOOEY PLD 127D
FFBB ABBI 307A

TRI-N PREFIX PLD ET 54Y
SOS ANGEL 266A
SOS PRINCESS HANNIS 188R

CE	BW	WW	YW	MILK	MTL
1.8	2.2	47	97	22	46

My oh my! Every now and again I get super attached to a female. Well, let me tell you 43F is certainly that heifer! She is like the Wal-Mart greeter at Springside, coming over for pets and talking your ear off. Pretty good chance it will be a minor flood when the hammer falls and Angelica has a new home, but we are overjoyed to offer this top HOOEY heifer. This cow family stems back to the beginning of our Charolais career and dam 266A is a maternal sister to the Lot 2 flush cow. This cow family has done nothing but made us money and I'm sure 43F will do the same for you.



GE
23

SOS NATASHA 89F

POLLED | SOS 89F | January 23 2018 | PFC750701

WINN MANS CHAVEZ 826Y
SOS HOOEY PLD 127D
FFBB ABBI 307A

SVY PILGRIM PLD 655S
ALT TASHA 37X
ALT NATASHA 2P

CE	BW	WW	YW	MILK	MTL
3.6	2.0	46	81	16	39

We are certain hands will be flying all over the place when 89F hits the ring. Another great Hooey heifer calf from a hard working Pilgrim daughter, ALT 37X. She produced 3 replacement daughters in the herd and four high dollar herd bulls including SOS Country Roads 95D selling to Snake Valley Farms Ltd. in Champion. 89F will be an awesome producer and don't be afraid to give her more than one going over. You will admire her for her hair, thickness, width, and depth of body.



24

MXS EVERLY 816F

POLLED | MXS 816F | January 23 2018 | PFC740300

CEDARDALE TYRANT 31T
CEDARDALE ZEAL 125Z
CEDARDALE MISS 64T

CEDARLEA SIXTEEN TONS 16A
MXS DITTO 656D
MXS DITTO 105Y

CE	BW	WW	YW	MILK	MTL
7.1	-1.7	42	70	18	39

Another great pair of Zeal daughters out of Sylvan's great cow herd. Watch for these females on the show road and even though they differ in type, you have to love their moderate frames, eye appeal, and overall broodiness.

816F is out of a 2 year old 16

Tonnes daughter that is impeccable and stylish. We are excited to see what she will do in our herd.



25

SOS FLANDERS 92F

POLLED | SOS 92F | January 24 2018 | PFC750700

CEDARDALE TYRANT 31T
CEDARDALE ZEAL 125Z
CEDARDALE MISS 64T

SILVERSTREAM GEDDES G102
MXS MAUDE 537C
MXS MAUDE 627S

CE	BW	WW	YW	MILK	MTL
6.4	0.4	46	80	10	33

SOS 92F came from last years Sylvan cows and was one of our favorites all summer long. As this is also a choice lot, we want you to pick the female best suited for your operation and we will gladly take the other one home for our program. There is no wrong choice here.

26

SOS FANTASY 12F

POLLED | SOS 12F | January 06 2018 | PFC750691

WINN MANS CHAVEZ 826Y
SOS HOME GROWN 15C
SOS SPRINGSIDE'S ADELE167

SPARROWS SEMINOLE 927W
STEPPLER MISS 144Z
STEPPLER MISS 153U

CE	BW	WW	YW	MILK	MTL
1.4	3.0	51	101	17	43

SOS Fantasy 12F exhibits that super correct look with her big wide top and long body which carries forward into a beautiful front end. The Home Grown females bring a lot of performance, backed by a big barrelled, great uddered Seminole daughter that gets better with every calf. Owned in conjunction with Connection Cattle Company.



27

SOS REBA 65F

HORNED | SOS 65F | January 17 2018 | QPFC750697

WINN MANS CHAVEZ 826Y
SOS HOOEY PLD 127D
FFBB ABBI 307A

HFCC PLD BOND 19L
ALT RED BOND 109S
ALT REBA 11P

CE	BW	WW	YW	MILK	MTL
4.1	2.3	47	84	17	40

Here's a little different twist to the offering... a red factor Hooey heifer calf. 65F is in a class all her own. She, like all Hooey's, has a fantastic disposition, nice body, and moderate frame. Her dam 109S is as sound as a dollar, still perfect uddered, and extremely fertile. We expect SOS 65F to be exactly the same way.



28

SOS FIONA 104F

POLLED | SOS 104F | January 28 2018 | PFC754184

GERRARD PASTOR 35Z
GERRARD ZEPELIN 3B
SPARROWS KRYSTAL 116R

MERIT ROUNDUP 9508W
LAE DOUBLE UP 2111Z
LAE SPICED UP 6115S

CE	BW	WW	YW	MILK	MTL
5.2	0.0	42	83	20	41

From the hottest dispersal last fall and out of our pick from that sale is 104F. This super hairy, sound footed, Zeppelin daughter is out of a picture perfect, excellent uddered, super quiet Roundup daughter. Not every female needs to go on the show road, some can stay home and raise herd bulls all day long! Owned with Peter Peters.





29

SOS SABLE PLD 879F

POLLED | SOS 879F | January 18 2018 | PFC750702

KAYR VELOCITY 812Z
CML GUSTO 662D
ML PLD GINNY 6U

WINN MANS KANSAS 9135W
FFBB SABLE 393A
FFBB SABLE PLD 110Y

CE	BW	WW	YW	MILK	MTL
n/a	1.4	43	88	20	42

Gusto calves are coming 10 days early, and that was certainly the case. SOS 879F is out of one of our favorite cows.



30

SOS FIONA 60F

POLLED | SOS 60F | January 14 2018 | PFC750695

KAYR VELOCITY 812Z
CML GUSTO 662D
ML PLD GINNY 6U

CSS SIR GRIDMAKER 2W
ALT CHERYL 107A
ALT BONDAGE 107S

CE	BW	WW	YW	MILK	MTL
n/a	2.3	47	83	18	41

What a sweet fronted, hairy, long bodied Gusto daughter. Her dam ALT 107A is an absolutely stunning front pasture female. Whatever angle you analyze SOS 60F from, she will catch your eye and you will definitely want to take her home.

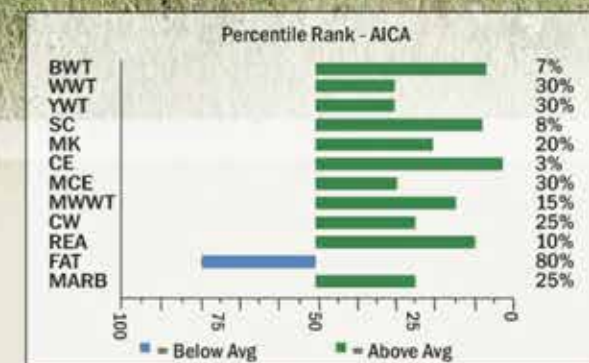


LT AFFINITY 6221

**Calving Ease, Performance,
Superior Cow Family, Phenomenal EPD's**

**This past spring we AI'ed our
entire Heifer Pen to Affinity**

LT RIO BRAVO 3181 P
SIRE: LT RUSHMORE 8060 PLD
LT BRENDA'S EASE 3055PLD
WINN MANS LANZA 610S
DAM: LT ATHENA 1247
LT SILVER ATHENA 7123 P



Dam: LT Athena 1247



Granddam: LT Silver Athena 7123

Only available in Canada from...



MCLEOD
LIVESTOCK

Rod, April, Colby & Megan McLeod
Cochrane, AB • 403.540.7986
www.mcleodlivestock.com

**Thank you to the following breeders for purchasing
exclusive semen packages in Affinity:**

Cedarlea Farms, Hodgeville, SK
HEJ Charolais, Innisfail, AB
Rocky Coulee Ranch, Airdrie, AB
RRTS Charolais, Westwold, BC



PZC TR DESIRAE 012

Offering pick of her 2018 ET heifer calves.

31

PZC TR DESIRAE 012

POLLED | CML 1012Z | March 08 2012 | PEFC408896

SPARROWS SANCHEZ 715T
CML DIABLO 2X
CML PLD WILMA 3S

CJC TRADEMARK H45
THOMAS MSTRADemark755 PET
BCI MISS VERYLIMIT 6033P

CE	BW	WW	YW	MILK	MTL
7.3	-0.8	38	79	20	39

Grand Champion Female at the 2017 Olds Fall Classic and was the Champion Charolais Female at the 2017 First Ladies Classic at Agribition. In 2018, we showed 2 transplant heifer calves at the Olds Fall Classic out of Desirae. One sired by Winn Mans Chavez 826Y and the other by CML Gusto 662D and they were Heifer Calf Champion and Reserve Heifer Calf Champion. It doesn't matter what you breed her to she just produces exceptional offspring. We have 8 transplant heifer calves that were born in 2018 and we are offering you the opportunity to pick from this exceptional group of Show Stoppers! They are sired by Winn Mans Chavez 826Y, CML Gusto 662D, CML Gunslinger 410B, CML Exacta 514C and Gerrard Pastor 35Z. We will only be selling 1 pick – the rest will be cornerstone females for our herd for years to come.

Daughters of PZC TR Desirae 012



CML DESIRAE 558C



CML DESIRAE 669D



Lot 31a - CML Desirae 800F
Heifer Calf Champion, 2018 Olds Fall Classic

31a

CML DESIRAE 800F

POLLED | CML 800F | January 02 2018 | PEFC748640

MERIT 7329T
WINN MANS CHAVEZ 826Y
WINN MANS BREATHLESS 826U

CE	BW	WW	YW	MILK	MTL
5.3	0.1	47	93	16	39

31c

CML DESIRAE 802F

POLLED | CML 802F | January 04 2018 | PEFC748642

KAYR VELOCITY 812Z
CML GUSTO 662D
ML PLD GINNY 6U

CE	BW	WW	YW	MILK	MTL
n/a	1.6	44	85	19	41

31e

CML DESIRAE 842F

POLLED | CML 842F | January 08 2018 | PEFC748648

GERRARD PASTOR 35Z
CML EXACTA 514C
CML PLD WILMA 3S

CE	BW	WW	YW	MILK	MTL
4.5	1.0	41	85	22	42

31g

CML DESIRAE 845F

POLLED | CML 845F | January 10 2018 | PEFC748649

GERRARD PASTOR 35Z
CML GUNSLINGER 410B
TARGET PLD GINNY 40P

CE	BW	WW	YW	MILK	MTL
3.2	1.6	43	83	22	43

31b

CML DESIRAE 801F

POLLED | CML 801F | January 03 2018 | PEFC748641

KAYR VELOCITY 812Z
CML GUSTO 662D
ML PLD GINNY 6U

CE	BW	WW	YW	MILK	MTL
n/a	1.6	44	85	19	41

31d

CML DESIRAE 813F

POLLED | CML 813F | January 07 2018 | PEFC748647

GERRARD PREACHER 31U
GERRARD PASTOR 35Z
GERRARD ROXANNE 18P

CE	BW	WW	YW	MILK	MTL
1.3	1.7	48	93	26	50

31f

CML DESIRAE 844F

POLLED | CML 844F | January 18 2018 | PEFC748645

GERRARD PASTOR 35Z
CML EXACTA 514C
CML PLD WILMA 3S

CE	BW	WW	YW	MILK	MTL
4.5	1.0	41	85	22	42

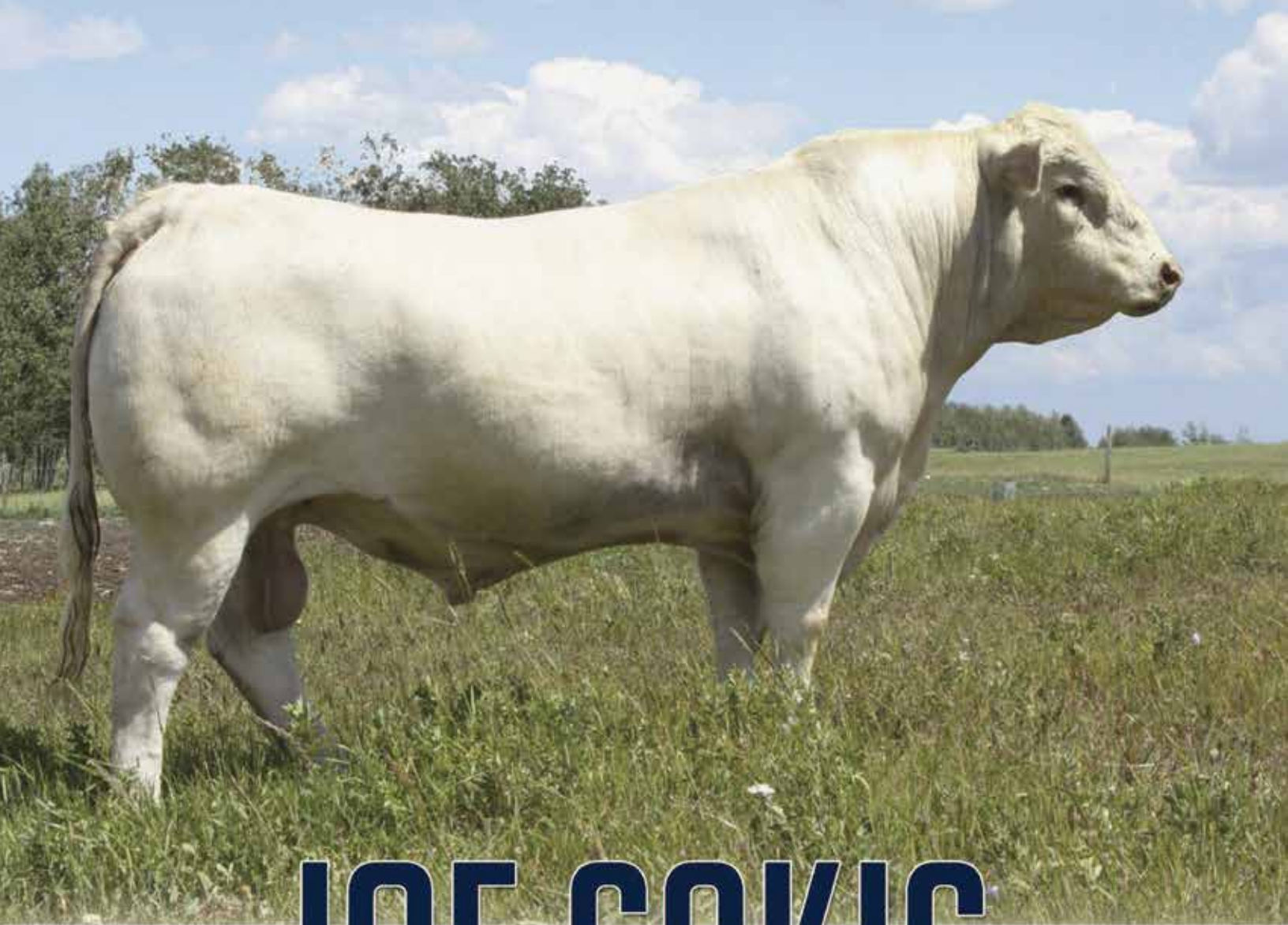
31h

CML DESIRAE 846F

POLLED | CML 846F | January 15 2018 | PEFC748646

GERRARD PASTOR 35Z
CML GUNSLINGER 410B
TARGET PLD GINNY 40P

CE	BW	WW	YW	MILK	MTL
3.2	1.6	43	83	22	43



CEDARLEA

JOE SAKIC

19D

TOP 1% FOR CALVING EASE - EPD +14.2 • TOP 1% FOR BIRTH WEIGHT - EPD -5.5
TOP 2% FOR MILK - EPD +31 • TOP 20% FOR MARBLING - EPD +0.56

A CALVING EASE SIRE THAT IS PRIMED TO TAKE THE INDUSTRY BY STORM!
He walked our Heifer Pens this breeding season.

LT LEDGER 0332 P
SIRE: CIRCLE CEE LEGEND 307A
D R REVELATION 467

SPARROWS RENO 824U
DAM: CEDARLEA WINTER 101B
CEDARLEA WINTER 11W



Jerry Hofer • Nobleford, AB
403.332.2261
jerrykhofer61@gmail.com



MCLEOD
LIVESTOCK

Rod, April, Colby & Megan McLeod
Cochrane, AB • 403.540.7986
www.mcleodlivestock.com



32

CML DESIRAE 751E

POLLED | CML 751E | February 18 2017 | PEFC725643

GERRARD PREACHER 31U
GERRARD PASTOR 35Z
GERRARD ROXANNE 18P

CML DIABLO 2X
PZC TR DESIRAE 012
THOMAS MSTRADEMARK755 PET

CE	BW	WW	YW	MILK	MTL
1.3	1.7	48	93	26	50

A definite sale feature. This one has all the attributes to be a future donor female and the potential of being a cornerstone female like her mother. She has been a standout since day 1! Bred Natural on May 4/2018 to Cedarlea Joe Sakic 19D. Due Feb 13/2019. Exposed from Apr 16 to June 12/2018 to Cedarlea Joe Sakic 19D.



33

CML DESIRAE 744E

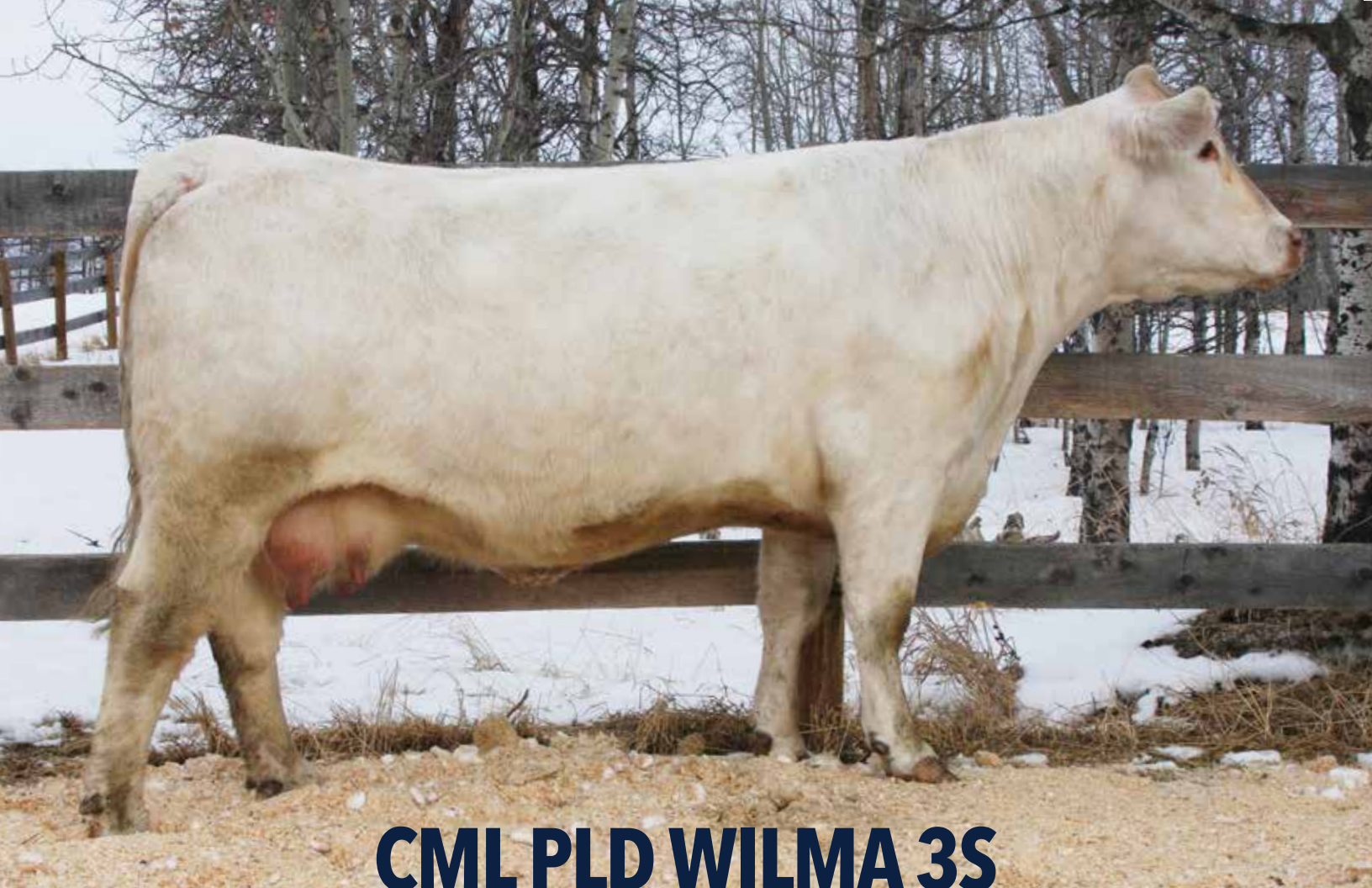
POLLED | CML 744E | February 17 2017 | PEFC725644

GERRARD PREACHER 31U
GERRARD PASTOR 35Z
GERRARD ROXANNE 18P

CML DIABLO 2X
PZC TR DESIRAE 012
THOMAS MSTRADEMARK755 PET

CE	BW	WW	YW	MILK	MTL
1.3	1.7	48	93	26	50

No guess work here. A Pastor daughter out of Desirae. We have a full sister in our 2 year old heifer pen that is one of the best young females we have. Bred Natural on Apr 30/2018 to Cedarlea Joe Sakic 19D. Due Feb 9/2019. Exposed from Apr 16 to June 12/2018 to Cedarlea Joe Sakic 19D.



CML PLD WILMA 3S
Her influence sells!



CML PLD WILMA 3S

POLLED | CML 3S | February 09 2006 | PFC365414

MERIT 5133E
MERIT VINTAGE 4065P
MERIT CARLA 2238M

TARGET DERRICK 11D
TARGET PLD GINNY 40P
TARGET PLD GINNY 26G

CE	BW	WW	YW	MILK	MTL
6.3	1.6	31	74	17	32

The influence that CML Wilma 3S and her dam Target PLD Ginny 40P have had on our breeding program is simply remarkable. When you look at the pedigrees of our animals in the sale, everyone of them with the exception of one goes back to Target Pld Ginny 40P! In total, CML Wilma 3S has 8 daughters in the sale and 13 granddaughters when you include the 8 heifer calves in our feature choice lot. When you look at all the pictures of the sons that CML Wilma 3S has produced you can see the consistent production and influence this cow has had on our program. All I can say is that this is a rare opportunity to be able to select this number of bred heifers from a cow that has been one of the top producing cows in the Charolais breed.



TARGET PLD GINNY 40P - DAM OF WILMA

All sons of CML Wilma 3S



CML DIABLO 2X



CML ENCORE 4Y



CML HEISMAN 413B



CML TOUCHDOWN 414B



CML EXACTA 514C



CML COPYRIGHT 714E



34

CML WILMA 706E

POLLED | CML 706E | January 06 2017 | PEFC725639

KEYS MCTENDER 279P
KEYS TEN-ACIOUS 166S
MISS KEY MAYBELL 73N

MERIT VINTAGE 4065P
CML PLD WILMA 3S
TARGET PLD GINNY 40P

CE	BW	WW	YW	MILK	MTL
6.7	0.8	40	81	15	35

AI Bred on Mar 26/2018 to LT Affinity 6221. Due Jan 5/2019
Exposed from Apr 16 to June 12/2018 to Cedarlea Joe Sakic 19D.



35

CML WILMA 708E

POLLED | CML 708E | January 01 2017 | PEFC725635

KEYS MCTENDER 279P
KEYS TEN-ACIOUS 166S
MISS KEY MAYBELL 73N

MERIT VINTAGE 4065P
CML PLD WILMA 3S
TARGET PLD GINNY 40P

CE	BW	WW	YW	MILK	MTL
6.7	0.8	40	81	15	35

AI Bred on Mar 26/2018 to LT Affinity 6221. Due Jan 5/2019
Exposed from Apr 16 to June 12/2018 to Cedarlea Joe Sakic 19D.



36

CML WILMA 715E

POLLED | CML 715E | January 05 2017 | PEFC725638

KEYS MCTENDER 279P
KEYS TEN-ACIOUS 166S
MISS KEY MAYBELL 73N

MERIT VINTAGE 4065P
CML PLD WILMA 3S
TARGET PLD GINNY 40P

CE	BW	WW	YW	MILK	MTL
6.7	0.8	40	81	15	35

AI Bred on Mar 26/2018 to LT Affinity 6221. Due Jan 5/2019
Exposed from Apr 16 to June 12/2018 to Cedarlea Joe Sakic 19D.



37

CML WILMA 726E

POLLED | CML 726E | January 04 2017 | PEFC725637

KEYS MCTENDER 279P
KEYS TEN-ACIOUS 166S
MISS KEY MAYBELL 73N

MERIT VINTAGE 4065P
CML PLD WILMA 3S
TARGET PLD GINNY 40P

CE	BW	WW	YW	MILK	MTL
6.7	0.8	40	81	15	35

Bred Natural on May 4/2018 to Cedarlea Joe Sakic 19D. Due Feb 13/2019
Exposed from Apr 16 to June 12/2018 to Cedarlea Joe Sakic 19D



38

CML WILMA 788E

POLLED | CML 788E | February 09 2017 | PEFC725673

GERRARD PREACHER 31U
GERRARD PASTOR 35Z
 GERRARD ROXANNE 18P

MERIT VINTAGE 4065P
CML PLD WILMA 3S
 TARGET PLD GINNY 40P

This is the can't miss female in the sale. She is a full sister to CML Heisman 413B, CML Touchdown 414B, CML Exacta 514C and we have 9 full sisters producing in our herd. AI Bred on Mar 26/2018 to LT Affinity 6221. Due Jan 5/2019. Exposed from Apr 16 to June 12/2018 to Cedarlea Joe Sakic 19D.

CE	BW	WW	YW	MILK	MTL
0.8	2.9	45	91	24	46



39

CML WILMA 779E

POLLED | CML 779E | January 10 2017 | PEFC725674

ROLLING D CLASSIC 878U
KAYR VELOCITY 812Z
 KAYR ANNABELLE 812U

MERIT VINTAGE 4065P
CML PLD WILMA 3S
 TARGET PLD GINNY 40P

CE	BW	WW	YW	MILK	MTL
1.7	2.5	41	77	20	40

AI Bred on Mar 26/2018 to LT Affinity 6221. Due Jan 5/2019
 Exposed from Apr 16 to June 12/2018 to Cedarlea Joe Sakic 19D.



40

CML WILMA 781E

POLLED | CML 781E | January 21 2017 | PEFC725675

ROLLING D CLASSIC 878U
KAYR VELOCITY 812Z
 KAYR ANNABELLE 812U

MERIT VINTAGE 4065P
CML PLD WILMA 3S
 TARGET PLD GINNY 40P

CE	BW	WW	YW	MILK	MTL
1.7	2.5	41	77	20	40

AI Bred on Mar 26/2018 to LT Affinity 6221. Due Jan 5/2019
 Exposed from Apr 16 to June 12/2018 to Cedarlea Joe Sakic 19D.



41

CML WILMA 782E

POLLED | CML 782E | January 28 2017 | PEFC725676

ROLLING D CLASSIC 878U
KAYR VELOCITY 812Z
 KAYR ANNABELLE 812U

MERIT VINTAGE 4065P
CML PLD WILMA 3S
 TARGET PLD GINNY 40P

CE	BW	WW	YW	MILK	MTL
1.7	2.5	41	77	20	40

AI Bred on Apr 15/2018 to LT Affinity 6221. Due Jan 25/2019
 Exposed from Apr 16 to June 12/2018 to Cedarlea Joe Sakic 19D.



42

CML GINNY 725E

POLLED | CML 725E | January 03 2017 | PEFC725658

GERRARD PASTOR 35Z
CML GRAND SLAM 562C
HARVIE FIREFLY 14T

MERIT VINTAGE 4065P
CML GINNY 21Z
TARGET PLD GINNY 40P

Here is the deepest bodied heifer in the whole sale. The mass of this female is exceptional and 725E is destined to be a herd bull producing machine. Her dam is a full sister to CML Wilma 3S that is also a donor female in our program. Another full sister sells as Lot 43. Bred Natural on Apr 23/2018 to Cedarlea Joe Sakic 19D. Due Feb 2/2019. Exposed from Apr 16 to June 12/2018 to Cedarlea Joe Sakic 19D.

CE	BW	WW	YW	MILK	MTL
3.6	2.4	44	88	19	41



43

CML GINNY 721E

POLLED | CML 721E | January 06 2017 | PEFC725654

GERRARD PASTOR 35Z
CML GRAND SLAM 562C
HARVIE FIREFLY 14T

MERIT VINTAGE 4065P
CML GINNY 21Z
TARGET PLD GINNY 40P

A full sister to Lot 42. We have 2 maternal sisters in the herd sired by Pastor that have turned into great cows. One of them is the mother to the Lot 50 that was her first calf as a two year old. AI Bred on Mar 26/2018 to LT Affinity 6221. Due Jan 5/2019. Exposed from Apr 16 to June 12/2018 to Cedarlea Joe Sakic 19D.

CE	BW	WW	YW	MILK	MTL
4.2	2.3	45	87	18	40



44

CML MISS TRIM 730E

POLLED | CML 730E | January 14 2017 | PEFC725645

GERRARD PASTOR 35Z
CML HEISMAN 413B
CML PLD WILMA 3S

JWX SILVER BULLET 524W
RPJ MISS TRIM 298Z
RPJ MISS TRIM 72X

At the Alberta Select Sale we bought a flush on the Miss Trim cow from Daines/Oneil Livestock. We flushed her to CML Heisman 413B and the results were exceptional. A full brother to this heifer was one of our feature bulls in our sale last spring and sold for \$9750 to Wheatland Colony, Strathmore. AI Bred on Mar 26/2018 to LT Affinity 6221. Due Jan 5/2019. Exposed from Apr 16 to June 12/2018 to Cedarlea Joe Sakic 19D.

CE	BW	WW	YW	MILK	MTL
1.9	3.0	46	94	24	47



45

CML TESSA 739E

POLLED | CML 739E | January 03 2017 | PEFC725653

GERRARD PASTOR 35Z
CML HEISMAN 413B
CML PLD WILMA 3S

HTA TAUTUS 555R
ELDER'S TESSA 902W
ELDER'S TESS 7T

The dam of this heifer was the 2009 Agribition Reserve Grand Champion Female. She has been a consistent producer with many high selling bulls in our program. Bred Natural on May 4/2018 to Cedarlea Joe Sakic 19D. Due Feb 13/2019. Exposed from Apr 16 to June 12/2018 to Cedarlea Joe Sakic 19D.

CE	BW	WW	YW	MILK	MTL
4.5	2.6	52	99	23	49



CML GINNY 785E

POLLED | CML 785E | February 25 2017 | PFC753591

MVY ALL STAR 61A
MVY ALL SHOOK UP 18C
MVY ELITE 23Z

GERRARD PASTOR 35Z
CML GINNY 411B
TARGET PLD GINNY 40P

CE	BW	WW	YW	MILK	MTL
2.6	3.0	47	88	21	45

It will be interesting to see what this mating produces. The dam of this heifer is a Pastor x Ginny daughter that is now in our transplant program. As a calf, CML Ginny 411B was our highest performing heifer for both weaning and yearling weights. AI Bred on Mar 26/2018 to LT Affinity 6221. Due Jan 5/2019 Exposed from Apr 16 to June 12/2018 to Cedarlea Joe Sakic 19D.



CML WILMA 747E

POLLED | CML 747E | January 16 2017 | PFC753588

MVY ALL STAR 61A
MVY ALL SHOOK UP 18C
MVY ELITE 23Z

GERRARD PASTOR 35Z
CML WILMA 422B
CML PLD WILMA 3S

CE	BW	WW	YW	MILK	MTL
4.0	2.3	44	86	22	43

The dam of this female is one of 9 transplant daughters of Pastor x CML Wilma 3S that are in our herd. Exposed from April 16 to June 12/2018 to Cedarlea Joe Sakic 19D. Due End of Feb/2019



CML MERIT 749E

POLLED | CML 749E | January 16 2017 | PFC754598

MVY ALL STAR 61A
MVY ALL SHOOK UP 18C
MVY ELITE 23Z

KCM PROWLER 2X
CML MERIT 421B
CML MERIT 29Z

CE	BW	WW	YW	MILK	MTL
6.1	1.0	37	77	24	42

The mother of this heifer has tons of milk and has produced one of the top calves at weaning the past couple years. Bred Natural on May 8/2018 to Cedarlea Joe Sakic 19D. Due Feb 17/2019. Exposed from Apr 16 to June 12/2018 to Cedarlea Joe Sakic 19D.



CML MISS SPUR 771E

POLLED | CML 771E | February 01 2017 | PFC753592

GERRARD PASTOR 35Z
CML EXACTA 514C
CML PLD WILMA 3S

SPARROWS SANCHEZ 715T
MLM MISS SPUR 22Z
MF MISS SPUR 813U

CE	BW	WW	YW	MILK	MTL
4.9	1.2	40	83	22	42

This is the oldest of the CML Exacta 514C daughters. The mother is a Sanchez daughter that goes back to the 813U female that has consistently produced small birth weight, high performing offspring. AI Bred on Apr 14/2018 to LT Affinity 6221. Due Jan 24/2019. Exposed from Apr 16 to June 12/2018 to Cedarlea Joe Sakic 19D.



CML GINNY 748E

POLLED | CML 748E | January 18 2017 | PFC753586

CML ACES WILD 1Z
KRW WILD CARD 112B
STAUFFERS MISS SARRAH PLD 14Y

GERRARD PASTOR 35Z
CML GINNY 537C
CML GINNY 21Z

CE	BW	WW	YW	MILK	MTL
2.1	2.2	49	96	23	47

This is a heifers first calf that is out of a son of CML Aces Wild that we used in our heifer pen. Her mother is a Pastor daughter out of CML Ginny 21Z that is also the mother to Lots 42 and 43. AI Bred on Apr 15/2018 to LT Affinity 6221. Due Jan 25/2019. Exposed from Apr 16 to June 12/2018 to Cedarlea Joe Sakic 19D.



CML GINNY 768E

POLLED | CML 768E | January 28 2017 | PFC753587

CML ACES WILD 1Z
KRW WILD CARD 112B
STAUFFERS MISS SARRAH PLD 14Y

GERRARD PASTOR 35Z
CML PLD GINNY 592C
TARGET PLD GINNY 40P

CE	BW	WW	YW	MILK	MTL
1.2	2.5	48	92	23	47

This is another heifer's first calf that is out of a son of CML Aces Wild that we used in our heifer pen. Her mother is a daughter of our cornerstone female Target Pld Ginny 40P. AI Bred on Mar 26/2018 to LT Affinity 6221. Due Jan 5/2019. Exposed from Apr 16 to June 12/2018 to Cedarlea Joe Sakic 19D.



McLeod Livestock

293113 TOWNSHIP RD 263
ROCKY VIEW COUNTY, AB T4A 0N5



November 28, 2018 | Olds, Alberta, Canada
MCLEOD LIVESTOCK | SPRINGSIDE FARMS

Catalogue design by
BELLA SPUR CREATIVE