

PEACE COUNTRY
SUPREME
BULL SALE



SATURDAY, MARCH 11, 2017
SALE TIME - 1:00 PM
VJV BEAVERLODGE

New for 2017 Internet Bidding

VOLD, JONES & VOLD ONLINE AUCTIONS
CATTLE CAPITAL OF CANADA

CAN'T MAKE THE SALE ?
Take Advantage Of Our Online Program With

- Live Video Streaming
- Video Audio Streaming
- Real Time Bidding

Buying Cattle From The Comfort Of Your Own Home

WWW.VJVAUCTION.COM

Any Questions Or Concerns
Contact Craig Jacklin (403) 783-1453



Thank you to all of the Bidders & Buyers and anyone who supported our sale in any way. We appreciate your continual support and interest in our cattle.



A Peace Country Supreme Thank-you to all these progressive breeders for selecting your herd bulls from the Peace Country Supreme 2016

Tara & Olaf Harpe
Marcel & Denise Desranleau
Danny Williams Sr.
Larry Smith
Doug McDermott
Kevin Meniece
Wallace & Daina Calder
Rite-A-Way Simmental
Joe & Maryann Gingles
James Peel
Darryl & Angie Tetreau
Garry Sarmaga
Robert & Gwen Tindall
Warren Fletcher
Law Simmentals

Mervin Hegland
Blacksmith Ranch
Barry & Karen Strid
Double M Farms
Ed Yuha
HIS Ranch
Gil Werklund
Garry Rig
Hollingsworths
Ken Dolen
Brian Deynaka
Wolf Lake Simmentals
Wild Family
Harcourt Land and Cattle



**PEACE COUNTRY
SUPREME
BULL SALE**

THURSDAY, MARCH 11, 2017
SALE TIME - 1:00 PM
VJV BEAVER LODGE



Don't Forget!!!
Bring your truck and trailer to haul your bull home sale day, and save \$75.00 per Bull.



View Sale Catalogue Online at:
www.cattlevids.ca

PC

Don't Forget
Location for 2017
VJV Beaverlodge

PEACE COUNTRY SUPREME

BULL SALE

SATURDAY, MARCH 11, 2017

LUNCH - 11:30 AM • SALE TIME - 1:00 PM

VJV BEAVERLODGE

PREVIEWING OF BULLS FRIDAY, MARCH 10TH

Please Join us early for Coffee & Donuts
Thank-you to Monica Czech -
Canadian Farm Insurance Corp.
for sponsoring Donuts

Please Join us for lunch at 11:30 am

Sight Unseen Purchase Plan

If you are unable to attend the sale, contact a consignor and we will personally go over the bulls and your bull power needs. We know our cattle and can select a bull to suit your needs. Internet bidding available see ad page 18

Breeding Evaluation & Semen Test

Breeding Evaluation & Semen Test will be completed on all bulls. Supplemental sheets will be available on sale day with scrotal measurements and sale weights.

Announcements

Announcements at the sale by the owners will take precedence over information in the sale catalogue.

Insurance

Any bulls returning to the breeder's farm require insurance available through Canadian Farm Insurance Corp.

Delivery

Free delivery of bulls at the purchaser's risk within a 400 KM radius of Grande Prairie. Delivery beyond this radius will be at cost. Bulls may be kept by the consignor, free of charge until April 1, 2016. Should the purchaser wish to extend the bull's stay beyond this date, the cost of care and feed will be \$3.00/day/bull.

Consignors preference would be that 2 year old and older bulls are picked up on sale day. Any questions please talk to the consignor.

\$75 OFF the price of each bull that buyers take home on sale day.

Please bring this catalogue
with you to the sale

VJV Beaverlodge Sale Staff

Shawn Gist 250-219-4419
Glen Fells 780-518-5573
Trapper Green 780-837-0171
VJV Beaverlodge 780-354-2423

We recommend you contact one of the sale staff or consignors who will take your bid.

Peace Country Supreme Group

Willowdale Simmentals

Dale and Judy Smith & Sons

Valleyview, AB

780-524-2790 • Dale's Cell 780-558-9337

email: drjs@iwantwireless.ca

CUTHBERTSON



CATTLE CO.

SCOTT & JACKIE

CUTHBERTSON

780 837-8544

Cell 780 837-6442 • Cell 780 837-4833

42 km North of Valleyview

Silver S Red Angus

Devin & Amber Stark

(780) 876-6252 - (780) 832-6046

www.silverstarkfarm.com



2017 Breed Average EPD's

EPD'S are one of several tools that can be used in order to ensure that you find the best bull for your needs and long term goals. EPD'S can and probably will change on young bulls as more information is added.

| Simmental Average EPD's | Black Angus Average EPD's | Red Angus Average EPD's |
|-------------------------------|---------------------------------|-------------------------------|
| CE 5.8 | CE +3.5 | CE +3.4 |
| BW 3.7 | BW +2.1 | BW -0.4 |
| WW 65.7 | WW +45 | WW +53 |
| YW 94.2 | YW +80 | YW +78 |
| MCE 7.7 | MILK +21 | MILK +17 |
| MWW 57.3 | TM +43 | TM +44 |
| MILK 24.6 | | |

THERE IS NO CORRELATION BETWEEN ANGUS AND SIMMENTAL EPD'S. EACH BREED MUST BE EVALUATED USING THEIR OWN CRITERIA.

Willowdale Simmentals

Bull Sale time again. We have a great selection of polled red and black Simmentals; yearlings and 2 year olds. The selection is rounded out by two yearling Red Angus and a very nice cross-bred. Our program has stayed very similar to past years. Bulls are not over fed, have moderate birth weights and display sound performance. Sale bulls are selected for their disposition, calving ease, weaning weight and their dam's performance.

The largest sire group is CMS Keystone sons. Keystone was the high selling red Simmental bull in the 2014 Czech-mate Bull Sale. All of these Keystone bulls display that extra width in hip, deep rib and wide top we saw in their sire. His progeny also have that loose hide and good hair coat that cattlemen like. His first daughters are calving well, have small teats and level udders.

The three black bulls sired by MRL Sterling Black are thick, with moderate birth weights, good dispositions with excellent weights.

Other sires include: Sunny Valley Banker, LFE RS Mr Lewis 820Y, TNT Bootlegger, Wheatland Red Earth and Porter Beamer 73B bulls. This will allow you to select bulls that are not related to past purchases.

The five two-year olds have been grown out and are ready to breed. This includes the pair of Red Mountain bulls shown at the PC Beef Congress.

All bulls are semen tested and guaranteed to be satisfactory breeders. We also have a full herd health protocol. We stand behind our bulls and want you, the buyer, to be satisfied with your purchase. Call or visit the farm to discuss your bull power needs.



Dale, Judy, Kent, Trena, Braden and Kylie

1

2 Year Old Simmental Bull

WILLOWDALE RED MTN 13C

01 February 2015 Reg#: PG1150885
Tattoo: DRJS 13C

IPU RED WESTERN 49X
KWA FLYF RED MOUNTAIN 16Z
KWA MS ROCK 14X

ANKONIAN RED CAESAR
WILLOWDALE WEGEN 58W
WILLOWDALE MEGAN 26M

| Weights | | EPD's | |
|---------|------|-------|------|
| BW | 96 | CE | 6.2 |
| WW | 800 | BW | 2.3 |
| Jan | 1636 | WW | 65.7 |
| | | YW | 95.1 |
| | | MCE | 10.7 |
| | | MWW | 62.4 |
| | | MILK | 29.5 |

- Homo polled, dark red and quiet
- Shows that deep rib and square hip of Red Mountain progeny
- A feature 2 year old bull that we kept over as a spare bull for our own use
- Bred 10 cows for a neighbour
- Performance EPD's



Lot 1

2

2 Year Old Simmental Bull

WILLOWDALE MOUNTAIN 68C

25 February 2015 Reg#: PG1151590
Tattoo: WDJS 68C

IPU RED WESTERN 49X
KWA FLYF RED MOUNTAIN 16Z
KWA MS ROCK 14X

SBSF LIEUTENANT 5L
WILLOWDALE SWINGER 50S
WILLOWDALE KISSES 31K

| Weights | | EPD's | |
|---------|------|-------|------|
| BW | 104 | CE | 8.5 |
| WW | 635 | BW | 1.4 |
| Jan | 1715 | WW | 56.0 |
| | | YW | 87.8 |
| | | MCE | 11.1 |
| | | MWW | 66.0 |
| | | MILK | 38.0 |

- Polled, solid red, quiet, deep ribbed, moderate birth weight
- Red Mountain 16Z has left a lot of excellent progeny across Western Canada
- Dam is out of the Flechvieh Lieutenant 5L bull
- 1/2 brother is Lot 23
- Part of our PCBC pair of bulls
- Top 25% for calving ease, birth weight, milk and marbling EPD's



Lot 2

3

2 Year Old Simmental Bull
WILLOWDALE KEYSTONE 131C

13 April 2015 Reg#: PG1160964
 Tattoo: DRJS 131C

MAF R HORIZON 7Y
CMS KEYSTONE 332A
 CMS HEIRLOOM 112Y

MRL RED FORCE 12U
WILLOWDALE DARLING 60Z
 WILLOWDALE MS RED ACE 42X

- Homozygous polled, dark red, virgin bull
- Retained this bull over, as he was our youngest
- Lots of thickness and depth of rib on this beef bull
- Top 10% for weaning and yearling EPD's
- Great cow bull to add thickness

| Weights | | EPD's | |
|---------|------|-------|-------|
| BW | 101 | CE | 7.2 |
| WW | 600 | BW | 4.8 |
| Jan 16 | 1642 | WW | 78.5 |
| | | YW | 113.6 |
| | | MCE | 9.1 |
| | | MWW | 60.2 |
| | | MILK | 20.9 |



Lot 3

4

2 Year Old Simmental Bull
WILLOWDALE RED BOOT 44C

15 February 2015 Reg#: PG1151389
 Tattoo: WDBS 44C

DCR MR MOON SHINE X102
TNT BOOTLEGGER Z268
 TNT MISS W70

IPU RED NUGGET 132N
WILLOWDALE RORI 4R
 WILLOWDALE MELANIE 18M

- Homozygous polled, dark red, with a touch of chrome
- Dam is a big volume cow with great feet and legs
- Very smooth, long bodied, cow bull
- **TNT Bootlegger** has been a popular AI Sire, with excellent calving ease

| Weights | | EPD's | |
|---------|------|-------|------|
| BW | 111 | CE | 5.6 |
| WW | 642 | BW | 4.8 |
| Jan 16 | 1693 | WW | 65.9 |
| | | YW | 90.0 |
| | | MCE | 8.4 |
| | | MWW | 54.9 |
| | | MILK | 21.9 |



Lot 4

5

2 Year Old Simmental Bull
WILLOWDALE RED LEWIS 109C

21 March 2015 Reg#: PG1151682
 Tattoo: DRJS 109C

LFE DREAMING RED 503S
LFE RS LEWIS 820Y
 LFE RS JULI 626R

LFE RED TANKER 490P
WILLOWDALE WANDA 31W
 WILLOWDALE PAM 33P

- Polled, solid red, smaller framed with excellent disposition
- Excellent calving ease EPD's top 10%, and low birth weight
- This virgin bull has a great maternal cow family
- Full brother to Lot 7, should make a heifer bull

| Weights | | EPD's | |
|---------|------|-------|------|
| BW | 80 | CE | 11.0 |
| WW | 638 | BW | -0.6 |
| Jan 16 | 1400 | WW | 48.3 |
| | | YW | 66.2 |
| | | MCE | 9.6 |
| | | MWW | 52.8 |
| | | MILK | 28.6 |



Lot 5

6

Yearling Simmental Bull
WILLOWDALE MR LEWIS 4D

28 February 2016 Reg#: PG1181693
 Tattoo: WDBS 4D

LFE DREAMING RED 503S
LFE RS LEWIS 820Y
 LFE RS JULI 626R

NEW TREND BLACK BANDANA
LFE BS BLACK MISS 45X
 LFE BS BLACK MISS 40T

- This sale feature bull is homo polled and solid, dark red
- Dam is a black cow who has had two high sellers in past sales
- 4D is straight bred Lewis breeding
- Here is a bull that has all those traits of a true herd sire
- Moderate birth weight, excellent growth, long and deep bodied

| Weights | | EPD's | |
|---------|------|-------|------|
| BW | 97 | CE | 6.4 |
| WW | 767 | BW | 3.7 |
| YW | 1186 | WW | 70.3 |
| | | YW | 99.1 |
| | | MCE | 11.7 |
| | | MWW | 62.5 |
| | | MILK | 27.3 |



Lot 6

7

Yearling Simmental Bull
WILLOWDALE MR LEWIS 84D

09 March 2016 Reg#: G1181708
 Tattoo: DRJS 84D

LFE DREAMING RED 503S
 LFE RS LEWIS 820Y
 LFE RS JULI 626R

LFE RED TANKER 490P
WILLOWDALE WANDA 31W
 WILLOWDALE PAM 33P

- Horned, red, and thick with a smaller frame
- Low birth weight in this Mr Lewis sired bull. Ranks in top 10% for calving ease and top 4% for birth weight
- Only horned bull we brought to the sale. He was kept for a number of good reasons. A first class heifer bull prospect
- Dam is an excellent milking, quiet, deep bodied cow

| Weights | | EPD's | |
|---------|-----|-------|------|
| BW | 83 | CE | 10.3 |
| WW | 725 | BW | 0.4 |
| YW | | WW | 60.1 |
| | | YW | 85.6 |
| | | MCE | 9.4 |
| | | MWW | 56.4 |
| | | MILK | 26.3 |



Lot 7

8

Yearling Simmental Bull
WILLOWDALE PRIME BEEF 48D

14 February 2016 Reg#: PG1181203
 Tattoo: DRJS 48D

WS BEEF KING W107
WS PRIME BEEF Z8
 HSF MISS SKY 87U

LAZY S RED SHOCKER 226L
WILLOWDALE SYLVIA 33S
 WILLOWDALE HARMONY 23H

- Homo Polled, red, white blaze face
- Another feature bull, from a dam that has raised a number of high sellers in this sale
- He carries extra length, width of rear quarter and top. This bull is an out cross to all other bulls in the sale
- Ranks in the top 20% for birth weight, top 5% for calving ease, weaning weight, yearling weight and maternal calving ease
- You want a bull that checks all the boxes and this is him!

| Weights | | EPD's | |
|---------|------|-------|-------|
| BW | 89 | CE | 12.9 |
| WW | 761 | BW | 2.1 |
| YW | 1179 | WW | 82.2 |
| | | YW | 118.5 |
| | | MCE | 15.2 |
| | | MWW | 62.3 |
| | | MILK | 21.2 |



Lot 8

9

Yearling Simmental Bull
WILLOWDALE STERLING BLACK 2D

24 January 2016 Reg#: BPG1179893
 Tattoo: WDJS 2D

LCHMN BRIGHT LIGHT L122L
MRL STERLING BLACK 138Z
 MRL MISS 403X

OLF ODIN U5
WILLOWDALE BLK KISSES 6B
 WILLOWDALE KISSES 3Z

- Homo polled, double black and thick
- Low birth weight, excellent calving ease EPDs. A heifer bull that will add that extra growth and thickness
- MRL 138Z (Sterling Black) is a low birth weight, maternal trait sire
- Dam is an Odin daughter that has done an awesome job on her first bull. She has excellent feet and udder

| Weights | | EPD's | |
|---------|------|-------|-------|
| BW | 79 | CE | 12.3 |
| WW | 762 | BW | 0.1 |
| YW | 1168 | WW | 70.6 |
| | | YW | 106.0 |
| | | MCE | 15.2 |
| | | MWW | 66.4 |
| | | MILK | 31.1 |



Lot 9

10

Yearling Simmental Bull
WILLOWDALE BLACK ODIN 10D

16 March 2016 Reg#: BPG1181715
 Tattoo: WDJS 10D

OLF ODIN U5
WILLOWDALE ODIN 64B
 WILLOWDALE SUMMER 49S

NICHOLS MANIFEST T79
WILLOWDALE BLK KARA 11A
 WILLOWDALE KARA 39K

- Homozygous polled, black, white face and growthy
- Sired by a high performing Odin son that we used. Lots of calving ease in this pedigree. Should make a heifer bull.
- Top WPDA bull in our bull pen
- Dam is a smaller framed black baldie cow who has done an excellent job on his first two calves
- Awesome EPDs for multiple traits

| Weights | | EPD's | |
|---------|-----|-------|-------|
| BW | 80 | CE | 15.0 |
| WW | 828 | BW | -0.6 |
| YW | | WW | 81.4 |
| | | YW | 118.2 |
| | | MCE | 12.9 |
| | | MWW | 67.9 |
| | | MILK | 27.2 |



Lot 10

11

Yearling Simmental Bull
WILLOWDALE STERLING BLACK 60D

19 February 2016 Reg#: BPG1181683
 Tattoo: DRJS 60D

LCHMN BRIGHT LIGHT L122L
MRL STERLING BLACK 138Z
 MRL MISS 403X

WILLOWDALE ROUNDUP 12R
WILLOWDALE URSA 55U
 WILLOWDALE NICE 37N

- Homo polled, double black and long bodied
- A very balanced bull that is showing excellent growth
- Dam is a moderate framed tank of a cow
- Our high gaining yearling bull

| Weights | | EPD's | |
|---------|------|-------|-------|
| BW | 99 | CE | 4.4 |
| WW | 675 | BW | 3.0 |
| YW | 1205 | WW | 72.1 |
| | | YW | 112.3 |
| | | MCE | 11.6 |
| | | MWW | 64.4 |
| | | MILK | 28.3 |



Lot 11

12

Yearling Simmental Bull
WILLOWDALE STERLING BLACK 54D

16 February 2016 Reg#: BPG1181262
 Tattoo: DRJS 54D

LCHMN BRIGHT LIGHT L122L
MRL STERLING BLACK 138Z
 MRL MISS 403X

WFL FULLY CHARGED 201M
WILLOWDALE SUMMER 49S
 WILLOWDALE PARADISE 46P

- Homo polled, homo black, twin
- A high performing bull, who's dam has raised top selling bulls the last 2 years
- Sterling Black has done a very good job on the black bulls in our sale, leaving moderate birth weights with explosive gain

| Weights | | EPD's | |
|---------|------|-------|-------|
| BW | 88 | CE | 5.7 |
| WW | 723 | BW | 4.3 |
| YW | 1176 | WW | 69.3 |
| | | YW | 104.1 |
| | | MCE | 11.0 |
| | | MWW | 62.6 |
| | | MILK | 27.9 |



Lot 12

13

Yearling Simmental Bull
WILLOWDALE BLACK PORTER 6D

01 April 2016 Reg#: BPG1181732
 Tattoo: WDBS 6D

TRAXS RUSHMORE X103
PRL BEAMER 14 73B
 MS PORTER 10 74X

IPU 52N ACCELERATOR 206U
WILLOWDALE BLK NICE 92Z
 WILLOWDALE URSA 55U

- Homo polled and black
- The youngest bull in the sale and showing awesome performance
- Only two Porter bulls in the sale with the best gains in the group. Ranks in top 1% for weaning and yearling weight EPDs. Top 15% for calving ease and birth weight
- Check this calving ease bull out

| Weights | | EPD's | |
|---------|-----|-------|-------|
| BW | 90 | CE | 10.8 |
| WW | 811 | BW | 1.7 |
| YW | | WW | 87.9 |
| | | YW | 126.0 |
| | | MCE | 14.9 |
| | | MWW | 54.1 |
| | | MILK | 10.1 |



Lot 13

14

Yearling Simmental Bull
WILLOWDALE PORTER 78D

07 March 2016 Reg#: PG1181704
 Tattoo: DRJS 78D

TRAXS RUSHMORE X103
PRL BEAMER 14 73B
 MS PORTER 10 74X

SVS RED FORCE 46X
WILLOWDALE LOUISE 83Z
 WILLOWDALE XCELERATOR 96X

- Homo polled, solid light red and quiet
- A red Porter bull who is in the top 20% of the bulls in gain
- Moderate framed, hairy, mellow made bull
- A calving ease bull, his dam is a Red Force daughter. We used the Red Force bull on heifers

| Weights | | EPD's | |
|---------|-----|-------|-------|
| BW | 87 | CE | 13.3 |
| WW | 689 | BW | 1.4 |
| YW | | WW | 72.2 |
| | | YW | 101.0 |
| | | MCE | 13.6 |
| | | MWW | 49.0 |
| | | MILK | 12.9 |



Sire of Lot 14

15

Yearling Simmental Bull
WILLOWDALE BANKER 6D

28 January 2016 Reg#: PG1180640
 Tattoo: DRJS 6D

LFE RS LEWIS 340W
 SUNNY VALLEY BANKER 57Y
 SUNNY VALLEY CARRIE 50U

| Weights | | EPD's | |
|---------|------|-------|------|
| BW | 85 | CE | 13.3 |
| WW | 609 | BW | 1.6 |
| YW | 1051 | WW | 59.3 |
| | | YW | 85.3 |
| | | MCE | 10.0 |
| | | MWW | 56.6 |
| | | MILK | 26.9 |

NLC GOOD A NUFF 33G
 WILLOWDALE NEAT 53N
 WILLOWDALE KERRI 41K

- Polled, very smooth and deep bodied
- Low birth weight Banker son. Ranks in the top 4% for calving ease and birth weight
- Could be used as a heifer bull
- Dam has been a consistent producer over the years



Lot 15

16

Yearling Simmental Bull
WILLOWDALE BANKER 33D

10 February 2016 Reg#: PG1181170
 Tattoo: DRJS 33D

LFE RS LEWIS 340W
 SUNNY VALLEY BANKER 57Y
 SUNNY VALLEY CARRIE 50U

| Weights | | EPD's | |
|---------|------|-------|-------|
| BW | 97 | CE | 9.3 |
| WW | 733 | BW | 3.9 |
| YW | 1213 | WW | 80.4 |
| | | YW | 115.4 |
| | | MCE | 9.9 |
| | | MWW | 64.4 |
| | | MILK | 24.2 |

WS BEEF KING W107
 WILLOWDALE HERSHEY 84B
 WILLOWDALE PURDY 29P

- Homozygous polled, quiet and smooth
- One of the top gaining bulls in the pen
- He's out of an excellent first calf heifer who's cow family has raised many high performing cattle
- Awesome EPDs, top 20% for calving ease, top 10% for weaning and yearling weight



Lot 16

17

Yearling Simmental Bull
WILLOWDALE RED EARTH 20D

04 February 2016 Reg#: PG1181135
 Tattoo: DRJS 20D

WHEATLAND RED EARTH 74X
 WHEATLAND RED EARTH 294Z
 WHEATLAND LADY 432P

| Weights | | EPD's | |
|---------|------|-------|-------|
| BW | 95 | CE | 6.4 |
| WW | 702 | BW | 3.5 |
| YW | 1148 | WW | 69.5 |
| | | YW | 101.8 |
| | | MCE | 11.4 |
| | | MWW | 59.5 |
| | | MILK | 24.7 |

IPU 52N ACCELERATOR 206U
 WILLOWDALE NEWYORK 108B
 WILLOWDALE NEWYORK 26N

- Homo polled, dark red, with tons of style
- Patterned like his sire, Wheatland Red Earth
- Moderate birth weight with above average calving ease
- His first calf dam comes from a family that has raised many high gaining progeny. Strong maternal traits here



Lot 17

18

Yearling Simmental Bull
WILLOWDALE RED EARTH 16D

03 February 2016 Reg#: PG1181129
 Tattoo: DRJS 16D

WHEATLAND RED EARTH 74X
 WHEATLAND RED EARTH 294Z
 WHEATLAND LADY 432P

| Weights | | EPD's | |
|---------|------|-------|------|
| BW | 79 | CE | 10.0 |
| WW | 686 | BW | 1.2 |
| YW | 1089 | WW | 57.6 |
| | | YW | 83.1 |
| | | MCE | 7.8 |
| | | MWW | 55.6 |
| | | MILK | 26.8 |

SUNNY VALLEY BANKER 57Y
 WILLOWDALE ROXY 18B
 WILLOWDALE ROXY 14R

- Homozygous polled, light red and very smooth
- One of the two Wheatland Red Earth bulls in the sale. Red Earth was used on most of our heifers
- Low birth weight, top 15% of EPDs for calving ease and birth weight. Heifer bull prospect
- Dam is by the Fleckvieh bull, Anchor D lmax, a calving ease bull himself



Lot 18

19

Yearling Simmental Bull
WILLOWDALE BOOTLEGGER 2D

26 January 2016 Reg#: PG1179894
 Tattoo: DRJS 2D

DCR MR MOON SHINE X102
TNT BOOTLEGGER Z268
 TNT MISS W70

SUNNY VALLEY BANKER 57Y
WILLOWDALE UNIQUE 64A
 WILLOWDALE UNIQUE 13U

- Homozygous polled, solid red, smaller frame
- Low birth weight, Bootlegger son with excellent calving ease
- EPDs should make a heifer bull
- Grand-dam and dam have good feet and nice tight udders
- Very smooth, with a small head and adequate body depth

| Weights | | EPD's | |
|---------|------|-------|------|
| BW | 85 | CE | 13.8 |
| WW | 643 | BW | 0.5 |
| YW | 1096 | WW | 58.8 |
| | | YW | 90.8 |
| | | MCE | 10.7 |
| | | MWW | 56.5 |
| | | MILK | 27.1 |



Lot 19

20

Yearling Simmental Bull
WILLOWDALE BOOTLEGGER 17D

03 February 2016 Reg#: PG1181130
 Tattoo: DRJS 17D

DCR MR MOON SHINE X102
TNT BOOTLEGGER Z268
 TNT MISS W70

IPU 52N ACCELERATOR 206U
WILLOWDALE XCELERATOR 89X
 WILLOWDALE RAE 61R

- Homo polled, solid, dark red
- Excellent calving ease
- Dam is an Accelerator, who has raised bulls for the PC Supreme and heifers in the keeper pen

| Weights | | EPD's | |
|---------|------|-------|------|
| BW | 101 | CE | 9.3 |
| WW | 655 | BW | 3.1 |
| YW | 1098 | WW | 70.6 |
| | | YW | 98.6 |
| | | MCE | 7.3 |
| | | MWW | 53.2 |
| | | MILK | 17.9 |



Lot 20

21

Yearling Simmental Bull
WILLOWDALE KEYSTONE 38D

12 February 2016 Reg#: PG1181192
 Tattoo: DRJS 38D

MAF R HORIZON 7Y
CMS KEYSTONE 332A
 CMS HEIRLOOM 112Y

ANKONIAN RED CAESAR
WILLOWDALE WORTHY 51W
 WILLOWDALE PENNY 63P

- Homo polled, dark red and stout
- Has been one of our top indexing bulls for weaning weight and gain
- Dam has raised a couple of bulls for the Supreme Bull Sale. She has good feet & legs with a tight udder
- These Keystone bulls have lots of rib, and overall thickness
- Excellent cow bull who's EPDs rank in the top 10% for weaning and yearling weight

| Weights | | EPD's | |
|---------|------|-------|-------|
| BW | 106 | CE | 1.4 |
| WW | 766 | BW | 6.2 |
| YW | 1134 | WW | 78.8 |
| | | YW | 112.4 |
| | | MCE | 9.7 |
| | | MWW | 64.7 |
| | | MILK | 25.3 |



Lot 21

22

Yearling Simmental Bull
WILLOWDALE KEYSTONE 72D

29 February 2016 Reg#: PG1181694
 Tattoo: DRJS 72D

MAF R HORIZON 7Y
CMS KEYSTONE 332A
 CMS HEIRLOOM 112Y

STR KING ARTHUR N310
WILLOWDALE NEAT 17Z
 WILLOWDALE NEAT 53N

- Homo polled with extra thickness in the rear quarter and overall body mass
- An excellent cow bull to raise chunky steer calves
- Was our fourth highest index bull for weaning weight in the top 2% of EPDs for weaning and yearling weight

| Weights | | EPD's | |
|---------|------|-------|-------|
| BW | 106 | CE | 5.9 |
| WW | 786 | BW | 6.4 |
| YW | 1178 | WW | 84.5 |
| | | YW | 124.3 |
| | | MCE | 6.5 |
| | | MWW | 62.0 |
| | | MILK | 19.7 |



Lot 22

23

Yearling Simmental Bull
WILLOWDALE KEYSTONE 6D

12 February 2016 Reg#: PG1181190
 Tattoo: WDJS 6D

MAF R HORIZON 7Y
 CMS KEYSTONE 332A
 CMS HEIRLOOM 112Y

| Weights | | EPD's | |
|---------|------|-------|-------|
| BW | 97 | CE | 5.6 |
| WW | 742 | BW | 4.1 |
| YW | 1129 | WW | 73.8 |
| | | YW | 106.5 |
| | | MCE | 9.4 |
| | | MWW | 66.3 |
| | | MILK | 29.4 |

SBSF LIEUTENANT 5L
 WILLOWDALE SWINGER 50S
 WILLOWDALE KISSES 31K

- Homozygous polled, red, white blaze face
- A Keystone bull with a moderate birth weight. You will like his depth of body and smoothness
- 1/2 brother sells as Lot 2.
- Dam is a 1/2 Fleckvieh cow who adds body mass and extra milk
- A great cow bull here to add extra performance



Lot 23

24

Yearling Simmental Bull
WILLOWDALE KEYSTONE 44D

13 February 2016 Reg#: PG1181199
 Tattoo: DRJS 44D

MAF R HORIZON 7Y
 CMS KEYSTONE 332A
 CMS HEIRLOOM 112Y

| Weights | | EPD's | |
|---------|------|-------|-------|
| BW | 101 | CE | 5.5 |
| WW | 714 | BW | 5.1 |
| YW | 1093 | WW | 76.4 |
| | | YW | 104.7 |
| | | MCE | 10.0 |
| | | MWW | 56.4 |
| | | MILK | 18.2 |

IPU 52N ACCELERATOR 206U
 WILLOWDALE ACCE SNAZZY 9Y
 WILLOWDALE SNAZZY 66S

- Homo Polled, dark red, white face with a deep square hip and a wide top
- Dam is a moderate framed Accelerator daughter with a tidy udder and excellent feet and legs
- Excellent maternal and growth traits here. A bull to give you replacement heifers



Lot 24

25

Yearling Simmental Bull
WILLOWDALE KEYSTONE 22D

05 February 2016 Reg#: PG1181145
 Tattoo: DRJS 22D

MAF R HORIZON 7Y
 CMS KEYSTONE 332A
 CMS HEIRLOOM 112Y

| Weights | | EPD's | |
|---------|------|-------|------|
| BW | 107 | CE | 4.0 |
| WW | 605 | BW | 6.0 |
| YW | 1055 | WW | 67.3 |
| | | YW | 93.6 |
| | | MCE | 9.9 |
| | | MWW | 52.5 |
| | | MILK | 18.8 |

IPU 52N ACCELERATOR 206U
 WILLOWDALE XCELERATOR 86X
 WILLOWDALE 25T

- Homo polled, dark red, blaze face
- A bull with more frame and made right. Thick in the rear quarter and smooth on the front shoulders
- Has been one of the best gaining bulls on feed after a slow start with all the mud in the fall



Lot 25

26

Yearling Simmental Bull
WILLOWDALE KEYSTONE 5D

27 January 2016 Reg#: PG1180638
 Tattoo: DRJS 5D

MAF R HORIZON 7Y
 CMS KEYSTONE 332A
 CMS HEIRLOOM 112Y

| Weights | | EPD's | |
|---------|------|-------|------|
| BW | 92 | CE | 7.7 |
| WW | 662 | BW | 3.3 |
| YW | 1014 | WW | 70.0 |
| | | YW | 94.3 |
| | | MCE | 9.9 |
| | | MWW | 54.0 |
| | | MILK | 19.0 |

IPU 52N ACCELERATOR 206U
 WILLOWDALE XELERATOR 11X
 WILLOWDALE THERESA 24T

- Homozygous polled, dark red and soggy
- A **Keystone** bull with a lower birth weight
- Dam is a deep bodied **Accelerator** daughter. A cow that is a very easy keeper.
- A bull that will get better with age. Don't overlook this bull!



Lot 26

27

Yearling Simmental Bull WILLOWDALE KEYSTONE 28D

08 February 2016 Reg#: PG1181156
Tattoo: DRJS 28D

MAF R HORIZON 7Y
CMS KEYSTONE 332A
CMS HEIRLOOM 112Y

D BAR C REGENCY 23R
D BAR C RED ZEOLA 760T
D BAR C RED ZEOLA 302N

| Weights | | EPD's | |
|---------|------|-------|-------|
| BW | 100 | CE | 5.6 |
| WW | 711 | BW | 5.0 |
| YW | 1116 | WW | 69.6 |
| | | YW | 102.1 |
| | | MCE | 11.1 |
| | | MWW | 56.4 |
| | | MILK | 21.6 |

- Homo polled, dark red with lots of hip and rib
- Dam is a very productive cow I brought home from Circle G Simmentals at Lacombe. This is her first bull
- Above average EPDs for weaning and yearling weight
- excellent cow bull to keep replacement females from



Lot 27

28

Yearling Simmental Bull WILLOWDALE KEYSTONE 34D

10 February 2016 Reg#: PG1181171
Tattoo: DRJS 34D

MAF R HORIZON 7Y
CMS KEYSTONE 332A
CMS HEIRLOOM 112Y

MRL RED FORCE 12U
WILLOWDALE NEVADA 48Z
WILLOWDALE NEVADA 28N

| Weights | | EPD's | |
|---------|------|-------|------|
| BW | 95 | CE | 7.9 |
| WW | 650 | BW | 3.7 |
| YW | 1096 | WW | 64.4 |
| | | YW | 91.0 |
| | | MCE | 9.6 |
| | | MWW | 55.1 |
| | | MILK | 22.9 |

- Homo polled, deep bodied, dark red
- Moderate birth weight, above average calving ease
- Dam is a moderate framed cow with excellent feet, legs and udder
- A very complete bull that will work in any herd



Lot 28

29

Yearling Simmental Bull WILLOWDALE KEYSTONE 63D

20 February 2016 Reg#: PG1181685
Tattoo: DRJS 63D

MAF R HORIZON 7Y
CMS KEYSTONE 332A
CMS HEIRLOOM 112Y

WFL IDENTITY 23X
WILLOWDALE DALLAS 51Z
WILLOWDALE PAM 33P

| Weights | | EPD's | |
|---------|------|-------|------|
| BW | 88 | CE | 6.4 |
| WW | 655 | BW | 3.4 |
| YW | 1042 | WW | 64.7 |
| | | YW | 87.6 |
| | | MCE | 10.0 |
| | | MWW | 55.4 |
| | | MILK | 23.0 |

- Polled, deep bodied and wide topped
- Dam is a young WFL Identity daughter
- This is a low birth weight Keystone bull. Keystone was the high selling bull in Check Mate's 2014 bull sale. We have Keystone daughters calving now with very nice udders and showing lots of volume



Lot 29

30

Yearling Red 1/2 Simmental Bull DRJS BULL 95D

19 March 2016 Reg#: Unregistered
Tattoo: DRJS 95B

WS BEEF KING W107
WILLOWDALE BEEF KING 62B - SIMMENTAL
WILLOWDALE TAHITI 91Z

RED SSS OLE'S 677X
RED WILLOWDALE DYNA QUEEN 3B - RED ANGUS
RED SF DYNA QUEEN 13Y

| Weights | |
|---------|-----|
| BW | 72 |
| WW | |
| Jan 16 | 990 |

- A very stylish Simmental X Red Angus bull
- This bull has a lot to offer: a low birth weight, excellent length of body with a square hip.
- His mother is an excellent first calf Red Angus heifer that is very correct in her confirmation.
- Offers that performance you need from a cross-bred bull.
- Our second youngest bull in the sale



Lot 30

31

Yearling Red Angus Bull
RED WILLOWDALE DIRECTION 21D

5 February 2016 Reg#: 1951965
 Tattoo: DRJS 21D

- ANDRAS IN FOCUS B152
- RED ANDRAS NEW DIRECTION R240
- RED ANDRAS KURUBA B111
- RED CHAMPLAIN SERENADE 2513P
- RED WILLOWDALE COUNTESS 54B
- RED CG COUNTESS 691S

| Weights | | EPD's | |
|---------|------|-------|------|
| BW | 66 | CE | +6.3 |
| WW | 694 | BW | -2.5 |
| Jan 16 | 1033 | WW | +55 |
| | | YW | +92 |
| | | MILK | +26 |
| | | TM | +54 |

- A moderate framed easy fleshing bull who is super quiet
- We used New Direction on our heifers to add calving ease and maintain a higher level of performance
- Low birth weight bull to use on heifers



Lot 31

32

Yearling Red Angus Bull
RED WILLOWDALE JUSTICE 4D

27 January 2016 Reg#: 1951964
 Tattoo: DRJS 4D

- RED VGW JUSTICE 614
- RED FRITZ JUSTICE 8013
- RED FRITZ CHRIS 6047
- RED GOLD-BAR NOBLE KR 210N
- RED KORAN OMEGA 447T 632
- RED KORAN OMEGA 360N 447

| Weights | | EPD's | |
|---------|------|-------|------|
| BW | 75 | CE | +6.5 |
| WW | 741 | BW | -0.9 |
| Jan 16 | 1122 | WW | +66 |
| | | YW | +97 |
| | | MILK | +26 |
| | | TM | +59 |

- A feature Red Angus bull by Fritz Justice. Justice is a performance leader who ranks at the top of EPDs for weaning and yearling weight
- 4D has been performing at the top of our bull pen
- Look at his 75lb birth weight, his overall body length and rib depth



Lot 32

**PROUD TO BE
 A PART OF YOUR
 COMMUNITY**



1.877.627.8468
 martindeerline.com



Call it increasing stock in the family business... Alberta style.

Long ^{ATB Financial}
LOVE
 This **LAND**

With 2.3 million head of beef cattle across Alberta, that's a lot of stock.

Long Love This Land.

atb.com

CASHFLOW | FINANCING | CLOSE TO HOME | AG KNOW-HOW

™ Trademarks of Alberta Treasury Branches.

ATB Agriculture™

Cuthbertson Cattle Co.

Welcome to the Sale. 2016 was a year of challenges and hurdles but lots of good grass. Our family's bull pen consists of less numbers this year but an exceptional caliber of quality. We are very proud of this group of bulls, they are the continuation of what we believe to be consistent genetics.

Due to rain and mud our bulls were not weaned and put on feed until November. That being said their growth, gain and development has been excellent. Our pen includes; a Red Simmental bull who is a stand out and has been all summer. 2 Black yearling Simmental bulls that have incredible mass, hair, and muscle and are off proven dams. A 2 year old Black Simmental, never offered for sale who is rugged, athletic and ready to breed a lot of cows. Finally, a Black Angus yearling who has the birth weight to work on heifers but the growth, style and performance for money making calves whether used on heifers or cows.

We thank-you in advance for your interest, and the support of all of our past, present and future bull buyers.

Scott, Jackie, Wyatt & Layne



33

Yearling Simmental Bull

CC REDDINGTON 22D

04 February 2016 Reg#: PG1193939
Tattoo: CCCC 22D

REMINGTON ON TARGET 2S
ULTRA MR TARGET 5A
ULTRA JOKER CASSADE 90N

CC DRIFTWOOD
CC BLACK MUMBO
D BAR C BLACK MUMBO 9161W

| Weights | | EPD's | |
|---------|------|-------|-------|
| BW | 94 | CE | 2.7 |
| WW | 775 | BW | 4.9 |
| JAN 16 | 1400 | WW | 72.2 |
| | | YW | 110.6 |
| | | MCE | 6.3 |
| | | MWW | 61.2 |
| | | MILK | 25.1 |

This bull is a red power house with a very complete build. He is the complete package with calm demeanor, deep rib, wide back, and the Hedsire look. Check out the unique and different pedigree, for he is a red bull out of 2 black parents. Making this bull a Non-diluter, this means no grey calves.

January 16, 2017 Actual weight: 1400 lbs



Lot 33

34

Yearling Simmental Bull

CC BLACK TARGET 26D

09 February 2016 Reg#: BPG1193947
Tattoo: CCCC 26D

REMINGTON ON TARGET 2S
ULTRA MR TARGET 5A
ULTRA JOKER CASSADE 90N

D BAR C TRACTION 126T
CC BLACK LACE
D BAR C BLACK LACE 8127U

| Weights | | EPD's | |
|---------|------|-------|------|
| BW | 92 | CE | 4.9 |
| WW | 715 | BW | 3.6 |
| JAN 16 | 1214 | WW | 62.9 |
| | | YW | 96.1 |
| | | MCE | 6.8 |
| | | MWW | 58.8 |
| | | MILK | 27.4 |

Proven genetics! The bull is hairy, long-sided, deep ribbed, with big testicles. He has a smooth front end with a flat shoulder. This is the 3rd bull we have brought to town for the sale out of this cow.

January 16, 2017 Actual weight: 1214 lbs



Lot 34

35

Yearling Simmental Bull

CC BLACK TARGET 34D

02 March 2016 Reg#: BPG1193963
Tattoo: CCCC 34D

REMINGTON ON TARGET 2S
ULTRA MR TARGET 5A
ULTRA JOKER CASSADE 90N

BJA MR UNMATCHABULL 637U
CC BLACK GRETA
CG BLACK GRETA 993W

| Weights | | EPD's | |
|---------|------|-------|------|
| BW | 93 | CE | 3.9 |
| WW | 742 | BW | 4.2 |
| JAN 16 | 1200 | WW | 66.4 |
| | | YW | 97.2 |
| | | MCE | 9.4 |
| | | MWW | 56.3 |
| | | MILK | 23.1 |

Take Notice! A March 2nd calf weighing up or above his brothers. His cow is something extra special. This is the 4th bull in a row she has produced for the sale and all have been high sellers. Top Cattle-men, Wally & Christine Lentz, Roland & Claire Soucy, and Barry & Karen Strid have all purchased brothers. This bull has strong genetic consistency and a real money making look. January 16, 2017 Actual weight: 1200 lbs



Lot 35

36

2 Year Old Simmental Bull
CC BLACK WARRIOR 15C

30 January 2015 Reg#: BPG1160508
 Tattoo: CCCC 15C

WHEATLAND BULL 680S
 MADER 'WINNING' 99Y
 ULTRA POWERLINE CASSEY74U
 BJA MR UNMATCHABULL 637U
CC BLACK DEVRA
 D BAR C BLK DEVRA 9115W

| Weights | | EPD's | |
|---------|------|-------|-------|
| BW | 103 | CE | 3.1 |
| WW | 747 | BW | 4.4 |
| JAN 16 | 1736 | WW | 65.9 |
| | | YW | 101.1 |
| | | MCE | 8.8 |
| | | MMW | 55.3 |
| | | MILK | 22.5 |

No left-over here, he was at the top of the pen last year. This bull was catalogued in last year's sale but didn't show-up due to a small leg injury. Wondering how our yearlings turn-out, have a look. He is a power house bull who is ready and able to breed a lot of cows. Community Pastures wanting 2 year olds here you are! This bull didn't come in and start getting grain until December. Lots and lots of breeding potential here. **January 16, 2017 Actual weight: 1736 lbs**



Lot 36

37

Yearling Angus Bull
CUTHBERTSON SLEEP EASY 30D

17 February 2016 Reg#: 1950593
 Tattoo: BLK 30D

HF EL TIGRE 28U
CUTHBERTSON EL TIGRE 32B
 RING CREEK 110M LADY 18P
 RING CREEK BURL IVES 88Y
CUTHBERTSON MIA 31B
 MIA OF RING CREEK 63W

| Weights | |
|---------|------|
| BW | 76 |
| WW | 676 |
| JAN 16 | 1050 |

Heifer bull by design. This fellow has a small head, low birth weight, smooth shoulder and big testicles. An easy to work with bull with a pleasant personality. Maybe not the biggest bull in the pen but a very complete package.
January 16, 2017 Actual weight: 1050 lbs



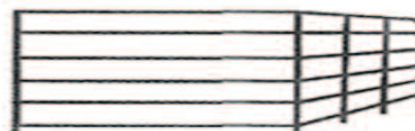
Lot 37

Valleyview Building Supplies

HD LIVESTOCK EQUIPMENT SALES • An agent for Real Industries Ltd.

www.realindustries.com

Nothing lasts like STEEL!



VALLEYVIEW BUILDING SUPPLIES

Contact: LISA FAGAN 780-524-3381 or 1-888-524-2024

Box 90, Valleyview, AB T0H 3N0

Find us on Facebook!



DEREK STEVENS
 780.876.4449
 nwohderek@gmail.com

6013 O'Brien Lake Crescent, Grande Prairie, AB T8W 0H5



Shawn's Custom Meat Cutting

Butchering • Sausage Making • Jerky
 Mobile Butcher Licence

Shawn Pearson
 RR#1 Site 4 Box 6
 Sexsmith, Alberta.
 ToH 3Co

780-831-8954

shawn.pearson@xplornet.com
www.shawncustommeats.com

Silver S Red Angus

Welcome to the 2017 edition of the Peace Country Supreme Bull Sale! We would like to start by saying Thank You to all our past customers, our families and all those who have supported us in the past year, it is very much appreciated!

We are pleased with the pen of bulls we have to offer this year, the large majority of them are sired by our home raised bull Red Silver S Zorro 1Z. We are able to offer a better variety with this pen of bulls than we have been able to in the past.

We are excited to help you will your bull power needs! Please call anytime, we are more than happy to answer any questions you may have, or stop by the farm for a visit! Again, Thank you to our past buyers and supporters, we look forward to seeing you all in March!

Devin, Amber, Emily & Cameron Stark



38 RED SILVER S 1C

1 April 2015 Reg#: 1887255

Tattoo: DOSS 1C

- RED TER-RON FULLY LOADED 540R
- RED 6 MILE FULL THROTTLE 171T
- RED SIX MILE WITZEL 360J
- RED SILVER S FIRE
- RED SILVER S 5Y
- RED CLOUD JUNCTION

| Weights | | EPD's | |
|---------|-----|-------|------|
| BW | 84 | CE | -2.2 |
| WW | 629 | BW | 2.0 |
| YW | 939 | WW | 59 |
| | | YW | 88 |
| | | MILK | 11 |
| | | TM | 41 |

Long bodied and athletic, 1C is one of our AI success stories. His Great grandmother lived to be 17 years old, and produced very consistent calves, many of her daughters and granddaughters are still a part of our herd.



Lot 38

39 RED SILVER S 6C

4 April 2015 Reg#: 1887258

Tattoo: DOSS 6C

- RED SVR GANGSTER 14S
- RED NORTHLINE FAT TONY 605U
- RED NORTHLINE RUBY 0305N
- RED TER-RON WALLACE 142W
- RED LAURON BLACKBIRD 47A
- RED LAURON BLACKBIRD 8X

| Weights | | EPD's | |
|---------|-----|-------|------|
| BW | 70 | CE | 2.8 |
| WW | 548 | BW | -0.9 |
| YW | 932 | WW | 37 |
| | | YW | 60 |
| | | MILK | 24 |
| | | TM | 43 |

Smaller framed and smooth bodied. Sired by a bull with a proven calving ease record, that is also known for his massive top and muscle shape, eye appeal and freedom of movement.



Lot 39

40 RED SILVER S 11C

8 April 2015 Reg#: 1887260

Tattoo: DOSS 11C

- RED SIX MILE AVIATOR 217P
- RED SIX MILE SAKIC 832S
- RED SIX MILE SIERA 257P
- RED SMOKY SABLE 93N
- RED ZAMBONI CHIP
- RED SHILO ROSE 1N

| Weights | | EPD's | |
|---------|-----|-------|-----|
| BW | 93 | CE | 0.0 |
| WW | 671 | BW | 1.6 |
| YW | 979 | WW | 62 |
| | | YW | 84 |
| | | MILK | 20 |
| | | TM | 51 |

Long and lean, this light red bull is square bodied, deep ribbed and has performance bloodlines backing him on both sides. If you're looking for pounds, this is your guy.



Lot 40

41 RED SILVER S 15C
 13 April 2015 Reg#: Unregistered
 Tattoo: DOSS 15C

RED LCHMAN COPPER ROB 1204D
 RED LMAN KING ROB 8621
 COPPER LASS 2392

| Weights | | EPD's | |
|---------|----|-------|---|
| BW | 81 | CE | - |
| WW | | BW | - |
| YW | | WW | - |
| | | YW | - |
| | | MILK | - |
| | | TM | - |

RED ANGUS COW 620S

This bull is off an unregistered cow so does not have papers. He was used on 25 heifers for the 2016 breeding season and only one of those heifers tested open. Copper Rob was another sire well known for his incredible calving ease record.



Lot 41

42 RED SILVER S 9C
 6 April 2015 Reg#: 1889233
 Tattoo: DOSS 9C

RED 6 MILE FULL THROTTLE 171T
 RED SILVER S 1A
 RED DTA BARBARA 10X
 RED OLE STARGATE 48X
 RED SILVER S 19A
 RED KLESKUN LAKE FIRE 2T

| Weights | | EPD's | |
|---------|------|-------|-----|
| BW | 67 | CE | 2.2 |
| WW | 644 | BW | 0.0 |
| YW | 1005 | WW | 51 |
| | | YW | 78 |
| | | MILK | 17 |
| | | TM | 43 |

Although this bull is on the smaller side, he is sired by one of our own home raised bulls, Red Silvers S 1A, a son of Full Throttle. These Full Throttle calves are generally known for their abundant depth and overall capacity, and their power, performance and style.



Lot 42

43 RED SILVER S 14C
 12 April 2015 Reg#: 1889232
 Tattoo: DOSS 14C

RED 6 MILE FULL THROTTLE 171T
 RED SILVER S 1A
 RED DTA BARBARA 10X
 RED NLDA 816R
 RED KLESKUN LAKE FIRE 2T
 RED KLESKUN LAKE FIRE 45R

| Weights | | EPD's | |
|---------|-----|-------|------|
| BW | 96 | CE | -2.6 |
| WW | 673 | BW | 3.1 |
| YW | 990 | WW | 57 |
| | | YW | 83 |
| | | MILK | 17 |
| | | TM | 45 |

Square bodied and deep ribbed, this bull carries himself well and has the power and style the Full Throttle line is popular for. With a higher birthweight and EPD's he would best serve on a group of cows.



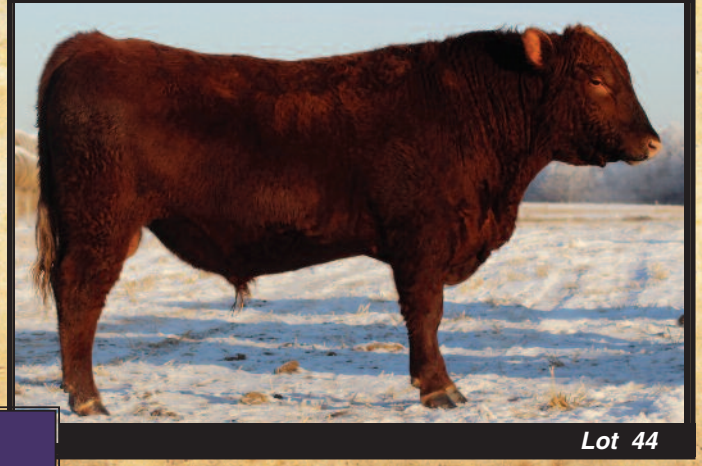
Lot 43

44 RED SILVER S 5C
 4 April 2015 Reg#: 1889247
 Tattoo: DOSS 5C

RED NORTHLINE FAT TONY 605U
 RED SILVER S ZORRO 1Z
 RED DTA BARBARA 10X
 RED NLDA 816R
 RED KLESKUN LAKE ESTY 18T
 RED KLESKUN LAKE ESTY 20H

| Weights | | EPD's | |
|---------|------|-------|-----|
| BW | 75 | CE | 2.0 |
| WW | 663 | BW | 0.9 |
| YW | 1003 | WW | 54 |
| | | YW | 77 |
| | | MILK | 19 |
| | | TM | 46 |

This dark red bull has a larger, square frame inherited from his Dam's side, combined with many quality attributes inherited from his Sire, including good muscling and free movement.



Lot 44

45

RED SILVER S 19C

20 April 2015

Reg#: 1889244

Tattoo: DOSS 19C

RED NORTHLINE FAT TONY 605U
 RED SILVER S ZORRO 1Z
 RED DTA BARBARA 10X

RED KLESKUN LAKE DIVIDE 4W
 RED SILVER S LYNN 13Z
 RED KLESKUN LAKE LYN 25T

| Weights | | EPD's | |
|---------|-----|-------|------|
| BW | 77 | CE | 3.5 |
| WW | 573 | BW | -2.1 |
| YW | 866 | WW | 37 |
| | | YW | 50 |
| | | MILK | 21 |
| | | TM | 39 |

This dark red, athletic little bull is also smaller framed and smooth bodied. He also comes from a line of easy calvers and inherited the wide top and muscle pattern Fat Tony is popular for.



Lot 45

46

RED SILVER S 23C

24 April 2015

Reg#: 1889243

Tattoo: DOSS 23C

RED NORTHLINE FAT TONY 605U
 RED SILVER S ZORRO 1Z
 RED DTA BARBARA 10X

RED DOUBLE A ROBIN HOOD 18K
 RED KLESKUN LAKE ESTY 23R
 RED KLESKUN LAKE ESTY 20H

| Weights | | EPD's | |
|---------|-----|-------|------|
| BW | 83 | CE | -0.7 |
| WW | 608 | BW | 2.8 |
| YW | 925 | WW | 54 |
| | | YW | 78 |
| | | MILK | 17 |
| | | TM | 44 |

Smooth shouldered with lots of length and frame, this bull takes after the maternal side of his pedigree. Combined with the genetic traits of his sire make him a complete package with lots of potential.



Lot 46

47

RED SILVER S 24C

26 April 2015

Reg#: 1892640

Tattoo: DOSS 24C

RED NORTHLINE FAT TONY 605U
 RED SILVER S ZORRO 1Z
 RED DTA BARBARA 10X

RED KLESKUN LAKE DIVIDE 4W
 RED SILVER S BRANDI 7Z
 RED KLESKUN LAKE UMPIRETTE 8T

| Weights | | EPD's | |
|---------|-----|-------|------|
| BW | 77 | CE | 5.0 |
| WW | 608 | BW | -2.3 |
| YW | 938 | WW | 41 |
| | | YW | 59 |
| | | MILK | 21 |
| | | TM | 42 |

Another smaller framed bull sired by Zorro. He good muscle shape and by his numbers, he may work with the right pen of heifers.



Lot 47

HI-PRO

FEEDS

Invested in animal nutrition

Feed that works as hard as you do.

Not all feed is created equal. At Hi-Pro Feeds, we produce only the highest performing beef feed products to the most stringent standards and with an unwavering focus on consistent quality.

Grande Prairie, AB | 780-532-3151
 Westlock, AB | 780-349-5886

hiprofeeds.com



48

RED SILVER S 27C

3 May 2015 Reg#: Unregistered
Tattoo: DOSS 27C

RED NORTHLINE FAT TONY 605U
RED SILVER S ZORRO 1Z
RED DTA BARBARA 10X

| Weights | | EPD's | |
|---------|----|-------|---|
| BW | 85 | CE | - |
| WW | | BW | - |
| YW | | WW | - |
| | | YW | - |
| | | MILK | - |
| | | TM | - |

RED ANGUS COW 630S

This bull is also out of an unregistered cow, and sells without registration papers. His dam is a deep bodied, sure footed, low maintenance cow with a quiet disposition with a knack for raising high performing calves. A Grandson of Red Northline Fat Tony 605U, who has a proven calving ease record.



Lot 48

49

RED SILVER S 34C

1 June 2015 Reg#: 1889241
Tattoo: DOSS 34C

RED NORTHLINE FAT TONY 605U
RED SILVER S ZORRO 1Z
RED DTA BARBARA 10X

| Weights | | EPD's | |
|---------|-----|-------|-----|
| BW | 81 | CE | 1.3 |
| | | BW | 1.1 |
| WW | 695 | WW | 51 |
| YW | 979 | YW | 67 |
| | | MILK | 21 |
| | | TM | 46 |

RED SMOKY SABLE 93N
RED CLOUD JUNCTION
RED HIDDEN LIC1 239L

Another son out of a cow group that are big framed, with lots of capacity and rib. Combined with the structure and muscling from the Fat Tony bloodline, give this bull lots of potential for growth.



Lot 49

C: 780-882-1897 Wayne Perry H: 780-354-8722

Flying W Livestock

Hauling

Your Bovine Relocator

RR1 Box 11, Site 7 Beaverlodge, AB T0H 0C0

Jeff Person

(780) 832-5513

CUSTOM BUILT:

Wind Panels

Bale Feeders

Free Standing Panels

Calf Shelters

Horse Shelters

Greenview Veterinay Clinic

Box 1146, 4602-39 Ave
Valleyview, AB T0H 3N0

Phone: (780) 524-4616 • Fax: (780) 524-2690

www.peacerivervetclinic.ca

Kevin Breker, DVM
Jocelyn Gibson, DVM
John Michael Pozniak, DVM

TEEPEE CREEK

Hauling Ltd

JUSTIN BINKS
Owner Manager

Box 68, Site 1, RR2
Sexsmith, AB. T0H 3C0
PH: 780.830.8402
tpcreekhailing@gmail.com

LOWBED SERVICES
OILFIELD • FORESTRY • AGRICULTURE

Ger - Den Seed Farm Ltd
 Growers of
 Pedigreed Seed

Gerald & Denise McDonald

Gerald Cell: 780-518-1505
 Denise Cell: 780-518-3990

Res: 780-538-3868
 Fax: 780-538-3215
 gerdenseed@gmail.com

44024 TWP RD 714
 County of Grande Prairie No.1, AB
 T8X 4B4

Terms and Conditions

Terms: Terms of the sale are cash or cheque – payable in Canadian funds at par immediately following the sale. The right of ownership shall not pass until after settlement is made. All settlements must be made before any animals are released.

Disputes: The Auctioneer shall control the bidding at all times. In case of disputes the Auctioneer's decision shall be final.

Purchaser's Risk: Each animal becomes the risk of the Purchaser as soon as sold. Animals will be cared for at the purchaser's risk for a reasonable length of time.

Announcements: Announcements from the auction stand will take precedence over any printed matter.

Accidents: All precautions possible will be taken to protect the safety of the buyers. Grande Prairie Livestock Market nor any owner assumes responsibility in this matter and disclaims any liability, legal or otherwise, in the event of accidents or loss of property.

All Sales of Animals: Shall be by auction and shall be conducted by the Auctioneers. The contributor has the privilege of making one bid which shall be presented to the auctioneer before the animal enters the sale ring.

Absentee Bids: Mailed or telephone bids shall be handled in a confidential manner if you are unable to attend the sale in person.

Breeding Guarantees: The seller warrants clear title to and the right to sell each animal offered for sale. All bulls offered will have passed a semen evaluation and are warranted to be sound, however, the seller is not responsible for damage caused by foreign objects after the bull has been sold nor sickness that was not apparent at the time of the sale.

Certificate of Registry: A certificate of registry duly transferred to the buyer will be furnished for each registered animal after settlement is made.

Rights & Obligations: The above terms and conditions of the sale shall constitute a contract between the buyer and the seller and be equally binding to both. Resale of animals following purchase in this sale shall constitute a separate transaction and the rights and obligations of the two parties connected thereto are not covered by the terms and conditions of this sale.

Shipping: Assistance may be given in making shipment after the sale, but no risk is assumed by consignors or the seller. Expenses incurred are the responsibility of the purchaser. Purchasers are required to furnish shipping instructions when making settlement. Any additional expenses are the responsibility of the buyer, including duty, brokerage fees, etc..

Retained Interest: Individual consignors reserve the right to collect "Owner's Use" semen from their bulls in this sale (at their expense and at the buyer's convenience).

KEDDIE'S Carhartt

Feed • Ranch Supplies • Clothing • Saddlery

SHOULDER SQUEEZE

MATERNITY PEN

RENT IT AT KEDDIE'S

• Skid Steers
• Wishek Disc - 10, 14, 22 ft.

BrettYoung

- Forage
- Turf
- Reclamation Seed
- Canola

"Ask about the Brett Young Forage Guarantee"

www.brettyoung.ca Always Come Through

Sundog Solar

The Most Versatile Stock Tank Ever Designed

- Zero contamination of original water source
- Used with solar panel or conventional AC power
- Capacity for 250 head
- Low energy requirements – saving \$\$
- System available for year around use
- Less foot rot and diseases
- Up to 25% better weight gain

Maximize-Your-Feed-Dollar\$

Our nutritionists can design a feed program that will work for you.

WE OFFER:

- Feed analysis and recommendations
- Custom Blends • Mini and bulk quantities
- CUSTOM FEED RATIONS**
- Mineral blends • Liquid supplements

PHONE AND MAIL ORDERS WELCOME

Ask about the Spring Calving Supplies Rebate Program

1-800-390-6924 • East of Ford on 132 Avenue, North End, Grande Prairie • 780-532-4888 • keddie.com

JNW TRUCKING

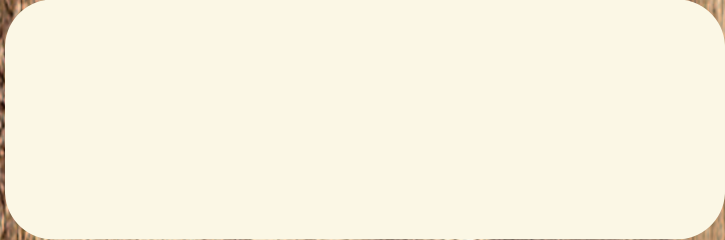
For your hauling needs offering, cattle hauling, hay hauling, equipment hauling and grain hauling

Box 1531
 Valleyview AB

1-780-524-4737 or 780-524-7888
 jimnicky.wirth@gmail.com

*Thanks to our
 Sale Advertisers*

**Willowdale Simmentals
Dale and Judy Smith
Box 1555
Valleyview, AB
T0H 3N0**



PEACE COUNTRY SUPREME BULL SALE

**SATURDAY, MARCH 11, 2017
SALE TIME - 1:00 PM
VJV BEAVERLODGE**

**WILLOWDALE SIMMENTALS • CUTHBERTSON CATTLE CO
SILVER S RED ANGUS**