

# PEACE COUNTRY SUPREME

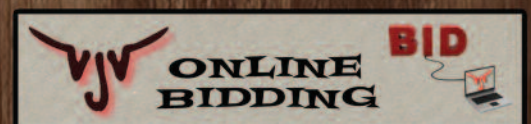
## BULL SALE

PC

SATURDAY, MARCH 12, 2016

SALE TIME - 1:00 PM

VJV BEAVERLODGE



WILLOWDALE SIMMENTALS • CUTHBERTSON CATTLE CO  
SILVER S RED ANGUS

# New for 2016 Internet Bidding

**VOLD, JONES & VOLD ONLINE AUCTIONS**  
CATTLE CAPITAL OF CANADA

**CAN'T MAKE THE SALE ?**  
Take Advantage Of Our Online Program With

- Live Video Streaming
- Video Audio Streaming
- Real Time Bidding

Buying Cattle From The Comfort Of Your Own Home  
**WWW.VJVAUCTION.COM**

Any Questions Or Concerns  
Contact Craig Jacklin (403) 783-1453



*Thank you to all of the Bidders & Buyers and anyone who supported our sale in any way. We appreciate your continual support and interest in our cattle.*



*A Peace Country Supreme Thank-you to all these progressive breeders for selecting your herd bulls from the Peace Country Supreme 2015*

Brian Leitch  
Barry & Karen Strid  
Joshua Juell  
Wesdon Angus  
Kevin Baird  
Robert McQuaig  
Bill Milner  
Bernard Schellénberg  
Kevin Meniece  
Warren Fletcher  
Ray Shaw  
Chester Wathen  
Marcel & Denise Desranleau  
Soucy Livestock  
Trevor & Lisa Rolph  
Gary Sarmaga

Randy Pocket  
Norman Hennigar  
Gerald Desranleau  
Earl Allen  
Valleyview Colony  
Lloyd Wendland  
Jerry & Violet Dorscheid  
Marvin Young  
Dolen Land & Cattle  
Codan Livestock  
Flat Rock Valley Ranch  
Peter Dolen  
Tony Yelenick  
Double NJ Holdings Ltd.  
Tony & Mike Cifranic  
Dan & Lois Williams

Wesland Farms  
Ken Dolen  
Tara & Olaf Harpe  
Alder Ridge Ranch  
Keith Wilson  
Kevin Hollingsworth  
B.J. Sandboe  
Larry Smith  
Brian Deynaka  
Neil Vance  
Danny Williams  
Glenn Leitch  
Roland Cailliau  
Matt Dommer  
Peter Siemens  
Larry Drysdale



**PEACE COUNTRY  
SUPREME  
BULL SALE  
PC**

SATURDAY, MARCH 14, 2015  
SALE TIME - 1:00 PM  
VJV BEAVERLEDGE

WILSON • MONTGOMERIES • CUTHBERTSON CATTLE CO  
LIVESTOCK • SILVER S RED ANGUS



View Sale Catalogue Online at:  
[www.cattlevids.ca](http://www.cattlevids.ca)

**Don't Forget!!!**  
Bring your truck and trailer to haul your bull home sale day, and save \$75.00 per Bull.



# PC

**Don't Forget  
Location for 2016  
VJV Beaverlodge**

# PEACE COUNTRY SUPREME

## BULL SALE

**SATURDAY, MARCH 12, 2016**

**LUNCH - 11:30 AM • SALE TIME - 1:00 PM**

**VJV BEAVERLODGE**

**PREVIEWING OF BULLS FRIDAY, MARCH 11TH**

**Please Join us early for Coffee & Donuts**

**Thank-you to Monica Czech -  
Canadian Farm Insurance Corp.**

**for sponsoring Donuts**

**Please Join us for lunch at 11:30 am**

### Sight Unseen Purchase Plan

If you are unable to attend the sale, contact a consignor and we will personally go over the bulls and your bull power needs. We know our cattle and can select a bull to suit your needs. Internet bidding available see ad page 18

### Breeding Evaluation & Semen Test

Breeding Evaluation & Semen Test will be completed on all bulls. Supplemental sheets will be available on sale day with scrotal measurements and sale weights.

### Announcements

Announcements at the sale by the owners will take precedence over information in the sale catalogue.

### Insurance

Any bulls returning to the breeder's farm require insurance available through Canadian Farm Insurance Corp.

### Delivery

Free delivery of bulls at the purchaser's risk within a 400 KM radius of Grande Prairie. Delivery beyond this radius will be at cost. Bulls may be kept by the consignor, free of charge until April 1, 2016. Should the purchaser wish to extend the bull's stay beyond this date, the cost of care and feed will be \$3.00/day/bull.

Consignors preference would be that 2 year old and older bulls are picked up on sale day. Any questions please talk to the consignor.

**\$75 OFF the price of each bull that  
buyers take home on sale day.**

**Please bring this catalogue  
with you to the sale**

### VJV Beaverlodge Sale Staff

Shawn Gist 587-335-8411  
Trapper Green 780-837-0171  
Ged Willis 780-814-4751  
Donny Fessler 780-882-6189  
VJV Beaverlodge 780-354-2423

We recommend you contact one of the sale staff or consignors who will take your bid.

### Peace Country Supreme Group

## Willowdale Simmentals

**Dale and Judy Smith & Sons**

**Valleyview, AB**

**780-524-2790 • Dale's Cell 780-558-9337**

**email: drjs@iwantwireless.ca**

**CUTHBERTSON**



**CATTLE CO.**

**SCOTT & JACKIE**

**CUTHBERTSON**

**780 837-8544**

**Cell 780 837-6442 • Cell 780 837-4833**

**42 km North of Valleyview**

## Silver S Red Angus

**Devin & Amber Stark**

**(780) 876-6252 - (780) 832-6046**

**www.silverstarkfarm.com**



### 2016 Breed Average EPD's

Simmental Average EPD's		Black Angus Average EPD's		Red Angus Average EPD's	
CE	5.9	CE	+2.9	CE	+3.6
BW	3.4	BW	+2.3	BW	-0.1
WW	61.1	WW	+43	WW	+52
YW	95.6	YW	+77	YW	+78
MCE	8.8	MILK	+18	MILK	+17
MWW	55.8	TM	+40	TM	+43
MILK	22.8				

EPD'S are one of several tools that can be used in order to ensure that you find the best bull for your needs and long term goals. EPD'S can and probably will change on young bulls as more information is added.

**THERE IS NO CORRELATION BETWEEN ANGUS AND  
SIMMENTAL EPD'S. EACH BREED MUST BE EVALUATED  
USING THEIR OWN CRITERIA.**

# Willowdale Simmentals

We are proud of the bulls we have on offer this year. Our program continues to produce herd sires that are homozygous polled, red, with calving ease and performance.

Sale bulls are selected for their disposition, weaning weight, calving ease and dam's performance. The Sunny Valley Banker sons are outstanding. This calving ease bull was used to breed heifers and mature, deep bodied cows, producing calves that are good haired, loose hided, deep ribbed with excellent testicle development.

The CMS Keystone sons are like their sire; lots of width over the top, deep bodied with exceptional rear quarter muscling.

Our AI program continues and the results are led with bulls sired by calving ease specialists: OLF Otis, Red Mountain and Wheatland Red Earth. Pedigrees with overall performance.

Our bulls are not overfed, letting them grow and develop into great long lived bulls. We have a full herd health protocol on the bulls. All bulls are semen tested and guaranteed to be satisfactory breeders.

We stand behind the bulls and want you to be satisfied with your purchase. Thank you to all of our previous bidders and buyers. Call or visit the farm to discuss your bull power needs.



*Dale, Judy, Kent, Trena, Braden and Kylie*

## 1

### Yearling Simmental Bull **WILLOWDALE BEEF KING 10C**

31 January 2015 Reg#: PG1150883  
Tattoo: DRJS 10C

WS BEEF MAKER R13  
WS BEEF KING W107  
WS MISS DREAMBOAT T17

GIBBY'S REAL DEAL 25T  
WILLOWDALE RED DEAL 69A  
WILLOWDALE XELERATOR 11X

Weights		EPD's	
BW	97	CE	10.9
WW	866	BW	3.5
YW	1232	WW	92.0
		YW	126.4
		MCE	10.2
		MMW	62.0
		MILK	16.0

- Homozygous polled, dark red and as long as a train
- Our #1 weaning indexing bull and he is off a 1/2 fleckvieh first calver. She did a good job with this guy!
- Sired by the performance bull Beef King W107. 10C patterns just like his sire
- EPD's in the top 10% for calving ease, growth and carcass traits. Just what the feedlots want in their steers



Lot 1

## 2

### Yearling Simmental Bull **WILLOWDALE RED OTIS 35C**

11 February 2015 Reg#: PG1151381  
Tattoo: WDBS 35C

OLF ODIN U5  
OLF OTIS Y43  
OLF MISS GUNNER W8  
LAZY S RED SHOCKER 226L  
WILLOWDALE SCARLETT 27S  
WILLOWDALE KAREN 19K

Weights		EPD's	
BW	94	CE	15.1
WW	701	BW	-0.7
YW	1130	WW	72.4
		YW	104.4
		MCE	12.7
		MMW	60.0
		MILK	23.8

- Homo polled, red white face and all-round good. An outcross pedigree. Could be used on heifers
- One of the thickest topped bulls in the Willowdale bull pen.
- Awesome EPD's, Otis has left us with an excellent set of bulls
- A bull that can be used in purebred or commercial herds.
- Feature Bull - Could be the sale starter



Lot 2

## 3

### Yearling Simmental Bull **WILLOWDALE RED OTIS 17C**

5 February 2015 Reg#: PG1150889  
Tattoo: DRJS 17C

OLF ODIN U5  
OLF OTIS Y43  
OLF MISS GUNNER W8  
WHEATLAND RED TEDDY 457P  
WILLOWDALE RED MEGAN 17A  
WOLLOWDALE ACCE MEGAN 79Y

Weights		EPD's	
BW	72	CE	14.9
WW	646	BW	-1.3
YW	1075	WW	71.2
		YW	108.1
		MCE	11.0
		MMW	57.3
		MILK	21.7

- Homo polled, super thick, wide topped, heifer bull
- Another OLF Otis bull off of a first calving Red Teddy heifer. Excellent EPD's across all traits
- Low birth weight, high EPD's for calving ease, with lots of growth on a moderate frame



Lot 3

**4**

**Yearling Simmental Bull**  
**WILLOWDALE BLACK OTIS 52C**

18 February 2015 Reg#: BPG1151576  
 Tattoo: DRJS 52C

OLF ODIN U5  
**OLF OTIS Y43**  
 OLF MISS GUNNER W8

WFL FULLY CHARGED 201M  
**WILLOWDALE SUMMER 49S**  
 WILLOWDALE PARADISE 46P

Weights		EPD's	
BW	99	CE	12.5
WW	798	BW	2.5
YW	1254	WW	84.5
		YW	127.9
		MCE	9.5
		MWW	67.9
		MILK	25.6

- Homozygous polled, black and very good. If he was red we would be using a bull of this calibre
- #2 bull at weaning weight and WPDA. Same type of bull as 3/4 brother that sold in last year's sale
- Excellent mother that keeps producing
- A bull with EPD's that cover all the bases: calving ease, growth and carcass



Lot 4

**5**

**Yearling Simmental Bull**  
**WILLOWDALE BLK OTIS 33C**

10 February 2015 Reg#: BPG1151379  
 Tattoo: DRJS 33C

OLF ODIN U5  
**OLF OTIS Y43**  
 OLF MISS GUNNER W8

RFS RED IRON T20  
**WILLOWDALE RED PRISM 19A**  
 WILLOWDALE ACCE PRISM 41Y

Weights		EPD's	
BW	76	CE	14.9
WW	630	BW	-1.5
YW	1044	WW	67.5
		YW	103.2
		MCE	11.5
		MWW	57.9
		MILK	24.1

- Homo polled and black
- OLF Otis is an AI sire to add performance and calving ease in one package
- Outstanding EPD's for growth, carcass and calving ease.
- Heifer bull



Lot 5

**6**

**Yearling Simmental Bull**  
**WILLOWDALE BLK BANKER 92C**

12 March 2015 Reg#: BPG1151614  
 Tattoo: WDBS 92C

LFE RS LEWIS 340W  
**SUNNY VALLEY BANKER 57Y**  
 SUNNY VALLEY CARRIE 50U

NEW TREND BLACK BANDANA  
**LFE BS BLACK MISS 45X**  
 LFE BS BLACK MISS 40T

Weights		EPD's	
BW	77	CE	8.4
WW	735	BW	3.5
YW	1177	WW	68.0
		YW	97.9
		MCE	12.0
		MWW	63.0
		MILK	28.9

- Homozygous polled, black, deep bodied and smooth. Weight per day of age is at 3.25 lbs
- A twin that was raised on his own mom. Only a year old, but has performed very well. His mother had one of the top red bulls in last year's sale, sold to Desranleaus at Westlock
- Excellent calving ease, maternal calving ease and milk. A bull that will give you great females for your herd



Lot 6

**7**

**Yearling Simmental Bull**  
**WILLOWDALE RED BANKER 38C**

13 February 2015 Reg#: PG1151384  
 Tattoo: DRJS 38C

LFE RS LEWIS 340W  
**SUNNY VALLEY BANKER 57Y**  
 SUNNY VALLEY CARRIE 50U

PELTONS POWERCAT 344G  
**WILLOWDALE SNAZZY 66S**  
 WILLOWDALE MARION 7M

Weights		EPD's	
BW	95	CE	10.9
WW	712	BW	2.7
YW	1126	WW	68.9
		YW	98.6
		MCE	8.8
		MWW	60.7
		MILK	26.2

- Homozygous polled, dark red, thick and hairy
- Good feet and legs like his sire
- Excellent calving ease
- Part of our PCBC pen of three bulls
- Feature Bull



Lot 7

**8**

**Yearling Simmental Bull**  
**WILLOWDALE RED BANKER 48C**

17 February 2015 Reg#: PG1151393  
 Tattoo: WDJS 48C

LFE RS LEWIS 340W  
**SUNNY VALLEY BANKER 57Y**  
 SUNNY VALLEY CARRIE 50U

Weights		EPD's	
BW	97	CE	10.5
WW	683	BW	2.0
YW	1139	WW	58.9
		YW	84.1
		MCE	10.8
		MWW	60.3
		MILK	30.8

LFE RED TANKER 490P  
**WILLOWDALE TAMMY 4T**  
 WILLOWDALE MARLEY 42M

- Homo polled, red blaze face and quiet. Just like his sire: soggy and stout
- His dam and grand dam have raised high selling bulls in previous sales
- Excellent calving ease here
- Part of our PCBC pen of 3 bulls



Lot 8

**9**

**Yearling Simmental Bull**  
**WILLOWDALE RED BANKER 86C**

9 March 2015 Reg#: PG1151608  
 Tattoo: DRJS 86C

LFE RS LEWIS 340W  
**SUNNY VALLEY BANKER 57Y**  
 SUNNY VALLEY CARRIE 50U

Weights		EPD's	
BW	82	CE	13.1
WW	761	BW	1.0
YW	1211	WW	65.5
		YW	89.5
		MCE	13.5
		MWW	60.8
		MILK	28.0

TNT GUNNER N208  
**WILLOWDALE WISTFUL 72W**  
 WILLOWDALE TAHITI 13T

- Homo polled, dark red, deep ribbed and thick Very similar to Lot 7
- Excellent EPD's for calving ease, recommended for heifers
- Moderate framed cow family that has been a consistent producer of top bulls



Lot 9

**10**

**Yearling Simmental Bull**  
**WILLOWDALE BANKER 34C**

10 February 2015 Reg#: PG1151380  
 Tattoo: DRJS 34C

LFE RS LEWIS 340W  
**SUNNY VALLEY BANKER 57Y**  
 SUNNY VALLEY CARRIE 50U

Weights		EPD's	
BW	88	CE	10.5
WW	656	BW	1.1
YW	1035	WW	60.8
		YW	85.6
		MCE	13.5
		MWW	58.7
		MILK	28.3

WHEATLAND RED ACE 747T  
**WILLOWDALE MS RED ACE 4X**  
 WILLOWDALE URIELA 40U

- Homo polled, solid red and quiet, with a smaller frame
- Low birth weight and smooth and above average scrotum size
- Ranks in the top 10% for calving ease
- Recommended for heifers



Lot 10

**11**

**Yearling Simmental Bull**  
**WILLOWDALE RD BANKER 100C**

15 March 2015 Reg#: PG1151677  
 Tattoo: WDJS 100C

LFE RS LEWIS 340W  
**SUNNY VALLEY BANKER 57Y**  
 SUNNY VALLEY CARRIE 50U

Weights		EPD's	
BW	107	CE	10.6
WW	758	BW	3.3
YW	1179	WW	72.4
		YW	108.0
		MCE	9.3
		MWW	59.6
		MILK	23.4

MRL RED FORCE 12U  
**WILLOWDALE KISSES 34Y**  
 WILLOWDALE KISSES 31K

- Homo polled, solid red with a smooth profile
- EPD's ranks in the top 10% for calving ease and top 40% for all other traits
- Strong maternal pedigree and longevity here
- This bull is only a year old and is doing very well, don't over look him



Lot 11

**12**

Yearling Simmental Bull

**WILLOWDALE BANKER 63C**

23 February 2015 Reg#: PG1151585  
Tattoo: DRJS 63C

LFE RS LEWIS 340W  
SUNNY VALLEY BANKER 57Y  
SUNNY VALLEY CARRIE 50U

LAZY S RED SHOCKER 226L  
WILLOWDALE SYLVIA 33S  
WILLOWDALE HARMONY 23H

- Large framed, homozygous polled, long bodied
- #2 WPDA and #2 for yearling weight
- These Banker calves are born easy, EPD's top 10% for growth
- Will work well on cows
- Dam is a consistent producer of good bulls, with three bulls selling to well known breeders - Feature Bull

Weights		EPD's	
BW	113	CE	6.7
WW	765	BW	6.6
YW	1242	WW	80.7
		YW	115.1
		MCE	11.1
		MWW	64.6
		MILK	24.2



Lot 12

**13**

Yearling Simmental Bull

**WILLOWDALE BANKER 72C**

28 February 2015 Reg#: PG1151594  
Tattoo: DRJS 72C

LFE RS LEWIS 340W  
SUNNY VALLEY BANKER 57Y  
SUNNY VALLEY CARRIE 50U

STF STARQUEST N114  
WILLOWDALE SHELLEY 8S  
WILLOWDALE JOELLE 22J

- Homo polled, red baldy with lots of stretch
- #4 in our group of bull for weaning weight and 3.3 lbs for WPDA
- Full brother sold to Hollingworth Farms last year and 1/2 brother to Ulrik Thompson
- This bull was born easy and was up sucking in no time. Awesome cow bull

Weights		EPD's	
BW	114	CE	3.0
WW	756	BW	5.7
YW	1174	WW	72.9
		YW	107.7
		MCE	9.5
		MWW	60.2
		MILK	23.7



Lot 13

**14**

Yearling Simmental Bull

**WILLOWDALE BANKER 98C**

13 March 2015 Reg#: PG1151675  
Tattoo: DRJS 98C

LFE RS LEWIS 340W  
SUNNY VALLEY BANKER 57Y  
SUNNY VALLEY CARRIE 50U

ANKONIAN RED CAESAR  
WILLOWDALE WORTHY 51W  
WILLOWDALE PENNY 63P

- Homo polled with lots of length and frame
- Above average EPD's for calving ease, birth weight and milk
- Another young bull that has been doing exceptionally well

Weights		EPD's	
BW	100	CE	6.4
WW	703	BW	3.2
YW	1167	WW	66.3
		YW	95.5
		MCE	11.7
		MWW	62.3
		MILK	29.1



Lot 14

**15**

Yearling Simmental Bull

**WILLOWDALE RED LEWIS 27C**

8 February 2015 Reg#: PG1150899  
Tattoo: DRJS 27C

LFE DREAMING RED 503S  
LFE RS LEWIS 820Y  
LFE RS JULI 626R

NLC GOOD A NUFF 33G  
WILLOWDALE NEAT 53N  
WILLOWDALE KERRI 41K

- Homo polled, thick, long bodied and rangy bull
- Since weaning he has been our #1 gaining bull. You will be impressed on sale day
- Dam has excellent feet and legs for a 12 year old cow

Weights		EPD's	
BW	108	CE	7.9
WW	630	BW	4.0
YW	1163	WW	63.1
		YW	87.8
		MCE	10.4
		MWW	53.3
		MILK	21.7



Sire of Lot 15

**16**

Yearling Simmental Bull

**WILLOWDALE LEWIS 103C**

17 March 2015

Reg#: G1151679

Tattoo: DRJS 103C

LFE DREAMING RED 503S  
LFE RS LEWIS 820Y  
LFE RS JULI 626R

LFE RED TANKER 490P  
WILLOWDALE SUNSHINE 10S  
WILLOW-DALE FLORIDA 10F

Weights		EPD's	
BW	110	CE	6.4
WW	737	BW	3.8
YW	1228	WW	68.0
		YW	94.1
		MCE	11.1
		MWW	56.1
		MILK	22.1

- Horned, dark red with a white face and thick
- We kept only one horned bull because he is a good one
- Structurally sound all around, with excellent width in his rear quarter.
- Dead Horse Creek Ranch has a 1/2 brother that they have used for a number of years



Lot 16

**17**

Yearling Simmental Bull

**WILLOWDALE LEWIS 105C**

17 March 2015

Reg#: PG1151681

Tattoo: DRJS 105C

LFE DREAMING RED 503S  
LFE RS LEWIS 820Y  
LFE RS JULI 626R

LFE BASEMAN 420U  
LFE RS TRULY 148X  
LFE RS MISS 65U

Weights		EPD's	
BW	106	CE	8.7
WW	698	BW	3.7
YW	1119	WW	65.6
		YW	90.2
		MCE	11.1
		MWW	56.6
		MILK	23.7

- Homo polled, solid red - a very young bull who's dam is a no fault Lewis cow.
- Above average for calving ease
- Mr Lewis 820Y is a very long and thick bodied, blood red bull that travels very free



Lot 17

**18**

Yearling Simmental Bull

**WILLOWDALE RED EARTH 20C**

6 February 2015

Reg#: PG1150892

Tattoo: DRJS 20C

WHEATLAND RED EARTH 74X  
WHEATLAND RED EARTH 294Z  
WHEATLAND LADY 432P

SUNNY VALLEY BANKER 57Y  
WILLOWDALE BANKER 31A  
WILLOWDALE XCELERATOR108X

Weights		EPD's	
BW	85	CE	10.9
WW	708	BW	1.0
YW	1137	WW	62.3
		YW	88.7
		MCE	12.6
		MWW	56.6
		MILK	25.4

- Homo polled, solid red, thick and smooth
- Low birth weight with excellent calving ease
- Wheatland Red Earth 294Z is a calving ease sire. Heifer bull here
- This bull's dam is the result of our two walking herd sires (Sunny Valley Banker) and (IPU Accelerator 206U). You will agree we are going in the right direction



Lot 18

**19**

Yearling Simmental Bull

**WILLOWDALE RED EARTH 26C**

8 February 2015

Reg#: PG1150898

Tattoo: DRJS 26C

WHEATLAND RED EARTH 74X  
WHEATLAND RED EARTH 294Z  
WHEATLAND LADY 432P

SUNNY VALLEY BANKER 57Y  
WILLOWDALE UNIQUE 64A  
WILLOWDALE UNIQUE 13U

Weights		EPD's	
BW	86	CE	10.6
WW	728	BW	-0.1
YW	1122	WW	57.6
		YW	84.4
		MCE	12.5
		MWW	56.4
		MILK	27.6

- Homo polled, dark red, deep bodied & thick
- Part of our pen of 3 bulls at the 2016 PCBC in Dawson Creek
- Built with the right shape to be a calving ease specialist. Heifer bull
- His Banker mother is a first calver and she did a good job!



Lot 19



# 20

## Yearling Simmental Bull WILLOWDALE KEYSTONE 5C

26 January 2015 Reg#: PG1150879  
Tattoo: DRJS 5C

MAF R HORIZON 7Y  
CMS KEYSTONE 332A  
CMS HEIRLOOM 112Y

MRL RED FORCE 12U  
WILLOWDALE NEVADA 48Z  
WILLOWDALE NEVADA 28N

Weights		EPD's	
BW	100	CE	6.7
WW	676	BW	4.3
YW	1047	WW	67.2
		YW	97.0
		MCE	9.5
		MWW	55.4
		MILK	21.8

- Homo polled, dark red, deep bodied, thick and hairy for those cold days
- Our first born Keystone to sell. We bought Keystone to add a little more performance and muscle expression to his calves. He was the high selling bull from Czech-Mate Simmentals in 2014
- His dam is a smaller framed Red Force with excellent feet and legs



Lot 20

# 21

## Yearling Simmental Bull WILLOWDALE KEYSTONE 75C

28 February 2015 Reg#: PG1151597  
Tattoo: DRJS 75C

MAF R HORIZON 7Y  
CMS KEYSTONE 332A  
CMS HEIRLOOM 112Y

SVS RED FORCE 46X  
WILLOWDALE REGAL 104Z  
WILLOWDALE XCELERATOR100X

Weights		EPD's	
BW	110	CE	5.7
WW	743	BW	6.3
YW	1185	WW	83.1
		YW	119.0
		MCE	8.6
		MWW	58.7
		MILK	17.1

- Homo polled, solid red and thick
- Here is a bull that will impress you with his rib shape and thickness through the rear quarter and over his top
- Dad was impressed with his guy at weaning for being correct with great muscle definition
- Would cross well on Angus cows for powerful steers



Lot 21

# 22

## Yearling Simmental Bull WILLOWDALE KEYSTONE 71C

28 February 2015 Reg#: PG1151593  
Tattoo: DRJS 71C

MAF R HORIZON 7Y  
CMS KEYSTONE 332A  
CMS HEIRLOOM 112Y

WS BEEF MAKER R13  
WILLOWDALE RED KERRI 49Z  
WILLOWDALE MS REDMAN 74X

Weights		EPD's	
BW	97	CE	6.0
WW	708	BW	4.6
YW	1143	WW	73.2
		YW	104.4
		MCE	9.5
		MWW	59.4
		MILK	22.7

- Homo polled, dark red, hairy and quiet
- Backed by a very productive cow family, all with excellent feet and udders
- These Keystone bulls seem to be very consistent in their structure
- Above average for calving ease, growth and carcass traits



Lot 22

# 23

## Yearling Simmental Bull WILLOWDALE RD MOUNTAIN 3C

22 January 2015 Reg#: PG1150877  
Tattoo: DRJS 3C

IPU RED WESTERN 49X  
KWA FLYF RED MOUNTAIN 16Z  
KWA MS ROCK 14X

SUNNY VALLEY BANKER 57Y  
WILLOWDALE BANKER 4A  
WILLOWDALE MS TOPGUN 15X

Weights		EPD's	
BW	79	CE	12.5
WW	659	BW	0.2
YW	1094	WW	58.6
		YW	87.0
		MCE	14.1
		MWW	57.3
		MILK	28.0

- Homo polled, dark, dark red and heavily muscled
- This bull is all Bull, with a measurement you can brag about.
- We used Red Mountain for his calving ease and natural muscling
- This is a calving ease bull
- Dam was one of our top Banker first calf heifers. Grand dam raised our top red heifer in 2015. Strong maternal side



Lot 23

**24**

**Yearling Simmental Bull**  
**WILLOWDALE MOUNTAIN 69C**

26 February 2015 Reg#: PG1151591  
 Tattoo: DRJS 69C

IPU RED WESTERN 49X  
 KWA FLYF RED MOUNTAIN 16Z  
 KWA MS ROCK 14X

LFE RED TANKER 490P  
 WILLOWDALE TASHA 33T  
 WILLOW-DALE FUDGE 2F

- Polled, dark red and well balanced
- His dam has a two year old in the sale (Lot35) and she raised the high selling Banker bull in the 2014 sale
- Will mature into a great overall herd bull
- Excellent EPD's for calving ease, birth weight, milk and marbling

Weights		EPD's	
BW	103	CE	9.6
WW	685	BW	1.3
YW	1091	WW	61.0
		YW	88.9
		MCE	13.7
		MWW	56.8
		MILK	26.3



Lot 24

**25**

**Yearling Simmental Bull**  
**WILLOWDALE MOUNTAIN 68C**

25 February 2015 Reg#: PG1151590  
 Tattoo: WDJS 68C

IPU RED WESTERN 49X  
 KWA FLYF RED MOUNTAIN 16Z  
 KWA MS ROCK 14X

SBSF LIEUTENANT 5L  
 WILLOWDALE SWINGER 50S  
 WILLOWDALE KISSES 31K

- Polled, light red
- 1/2 Flechvieh dam with great maternal traits. His 1/2 sister just sold in the Checkers 2015 sale to Ontario
- Another Red Mountain bull that will make great females
- Above average EPD's for calving ease and birth weight

Weights		EPD's	
BW	104	CE	8.3
WW	633	BW	1.4
YW	1118	WW	55.6
		YW	83.5
		MCE	12.7
		MWW	63.0
		MILK	35.1



Lot 25

**26**

**Yearling Simmental Bull**  
**WILLOWDALE MOUNTAIN 62C**

23 February 2015 Reg#: PG1151584  
 Tattoo: DRJS 62C

IPU RED WESTERN 49X  
 KWA FLYF RED MOUNTAIN 16Z  
 KWA MS ROCK 14X

LFE RED NORTHERN 376T  
 WILLOWDALE MS REDMAN 74X  
 WILLOWDALE KERRI 41K

- Homo polled, light red, quiet, smooth profile
- KWA Red Mountain is an A.I. sire that was used on our best heifers and cows in 2014
- Will mature into a larger framed bull
- Excellent balanced EPD's

Weights		EPD's	
BW	107	CE	4.9
WW	661	BW	4.7
YW	1128	WW	66.0
		YW	95.8
		MCE	12.8
		MWW	58.0
		MILK	24.9



Lot 26

**27**

**Yearling Simmental Bull**  
**WILLOWDALE MOUNTAIN 70C**

27 February 2015 Reg#: PG1151592  
 Tattoo: DRJS 70C

IPU RED WESTERN 49X  
 KWA FLYF RED MOUNTAIN 16Z  
 KWA MS ROCK 14X

ANKONIAN RED CAESAR  
 WILLOWDALE URIELA 40U  
 SJU LOIS 31L

- Polled, red white face and smooth
- Excellent Red Caesar dam who raises top end calves every year. Just sold her yearling heifer in the 2015 Checkers Sale to Albrecht's in Spirit River
- Above average for all EPD's

Weights		EPD's	
BW	105	CE	6.4
WW	708	BW	2.6
YW	1137	WW	64.3
		YW	92.5
		MCE	15.0
		MWW	62.0
		MILK	29.8



Lot 27

# 28

## Yearling Simmental Bull WILLOWDALE MOUNTAIN 39C

13 February 2015 Reg#: PG1151386  
Tattoo: DRJS 39C

IPU RED WESTERN 49X  
KWA FLYF RED MOUNTAIN 16Z  
KWA MS ROCK 14X

REMINGTON RED LABEL HR  
WILLOWDALE TATE 18T  
WILLOWDALE RITA 73R

Weights		EPD's	
BW	78	CE	12.6
WW	615	BW	-1.8
YW	1009	WW	47.7
		YW	65.0
		MCE	14.5
		MWW	56.1
		MILK	32.2

- Homo polled, dark red with a little white
- Super smooth with a low birth weight and very good calving ease and birth weight EPD's
- Heifer bull



Lot 28

# 29

## Yearling Simmental Bull WILLOWDALE RED BOOT 51C

18 February 2015 Reg#: PG1151395  
Tattoo: DRJS 51C

DCR MR MOON SHINE X102  
TNT BOOTLEGGER Z268  
TNT MISS W70

KS RED BY DESIGN N968  
WILLOWDALE URIKA 4U  
WILLOWDALE SATIN 45S

Weights		EPD's	
BW	89	CE	7.9
WW	653	BW	2.5
YW	1139	WW	64.8
		YW	99.1
		MCE	12.4
		MWW	56.1
		MILK	23.6

- Polled, dark red and lots of hair
- Very smooth, deep bodied and moderate frame size
- These Bootlegger bulls have performed very well for a number of Simmental breeders
- Low birth weight bull with EPD's in the top 5% for weaning weight, yearling weight and marbling



Lot 29

# 30

## Yearling Simmental Bull WILLOWDALE RED BOOT 44C

15 February 2015 Reg#: PG1151389  
Tattoo: WDBS 44C

DCR MR MOON SHINE X102  
TNT BOOTLEGGER Z268  
TNT MISS W70

IPU RED NUGGET 132N  
WILLOWDALE RORI 4R  
WILLOWDALE MELANIE 18M

Weights		EPD's	
BW	111	CE	2.0
WW	642	BW	5.0
YW	1048	WW	67.6
		YW	92.6
		MCE	9.7
		MWW	58.3
		MILK	24.5

- Homo polled, smaller framed, very smooth and deep ribbed
- Dam is a big volume cow with great feet and legs
- TNT Bootlegger was used to moderate birth weight, for the red color and add big rib to his progeny



Lot 30

# 31

## Yearling Red Angus Bull RED WILLOWDALE STRONGHOLD 6C

27 January 2015 Reg#: 1887180  
Tattoo: DRJS 6C

RED LJT CITADEL 812  
RED TROTTERS STRONGHOLD 156  
RED LJT PEARL 579

RED HB GRAND CANYON 103L  
RED CG COPPER LADY 555R  
RED HB COPPER LADY 106G

Weights		EPD's	
BW	89	CE	+1.6
WW	-	BW	+0.4
YW	-	WW	+70
		YW	+108
		MILK	+19
		TM	+55

- Sired by Trotters Stronghold, a bull known for his excellent growth, total maternal and marbling EPD's.
- This low birth weight bull is very smooth with a big heart girth to add that capacity to your calves. A bull that will leave some excellent females.
- Dam is a big volume cow with excellent udder



Lot 31

**32**

**2 Year Old Simmental Bull**  
**WILLOWDALE RUSHMORE 23B**

7 February 2014 Reg#: PG1123926  
 Tattoo: WDJS 23B

THSF FREEDOM 300N  
 TRAXS RUSHMORE X103  
 MISS TRAX U850

MRL RED FORCE 12U  
 WILLOWDALE KISSES 34Y  
 WILLOWDALE KISSES 31K

Weights		EPD's	
BW	97	CE	12.7
WW	610	BW	1.3
YW	1111	WW	64.8
		YW	102.7
		MCE	13.8
		MWW	49.3
		MILK	16.8

- Polled, red white face and very quiet
- This deep bodied, calving ease bull will work on heifers
- Neighbour used this bull on a couple of cows
- Backed by a great maternal cow family



Lot 32

**33**

**2 Year Old Simmental Bull**  
**WILLOWDALE BEEF KING 62B**

19 February 2014 Reg#: PG1124433  
 Tattoo: DRJS 62B

WS BEEF MAKER R13  
 WS BEEF KING W107  
 WS MISS DREAMBOAT T17

IPU 52N ACCELERATOR 206U  
 WILLOWDALE TAHITI 91Z  
 WILLOWDALE TAHITI 13T

Weights		EPD's	
BW	83	CE	12.2
WW	618	BW	0.7
YW	1114	WW	75.1
		YW	100.4
		MCE	13.8
		MWW	51.1
		MILK	13.5

- Homo polled, solid red and very smooth
- Used this bull as our clean up bull on our heifers in 2015
- He was used because of his excellent calving ease and he should be a great calving ease bull. Should have calves by sale time
- A bull that will be in demand on sale day



Lot 33

**34**

**2 Year Old Simmental Bull**  
**WILLOWDALE RED IMAX 63B**

19 February 2014 Reg#: PG1124434  
 Tattoo: DRJS 63B

HEMR SAMURAI 7S  
 ANCHOR D IMAX 250Y  
 DORA LEE ELEXIS

STR KING ARTHUR N310  
 WILLOWDALE NEAT 17Z  
 WILLOWDALE NEAT 53N

Weights		EPD's	
BW	88	CE	11.3
WW	619	BW	2.5
YW	1107	WW	58.7
		YW	85.4
		MCE	5.1
		MWW	56.7
		MILK	27.3

- Polled, dark red white face, 1/2 Flechvieh virgin bull
- Retained this bull to grow him out and he is showing lots of stretch in a smooth package
- Grand dam has the Lot 15 bull in the sale
- Imax 250Y was used on heifers as a calving ease bull.



Lot 34

**35**

**2 Year Old Simmental Bull**  
**WILLOWDALE RED ACCELER 81**

26 February 2014 Reg#: PG1124452  
 Tattoo: DRJS 81B

TNT ACCELERATOR S226  
 IPU 52N ACCELERATOR 206U  
 IPU RED POCAHONTAS 52N

LFE RED TANKER 490P  
 WILLOWDALE TASHA 33T  
 WILLOW-DALE FUDGE 2F

Weights		EPD's	
BW	60	CE	10.8
WW	619	BW	0.6
YW	1016	WW	67.7
		YW	92.4
		MCE	10.9
		MWW	46.5
		MILK	12.6

- Homo polled, solid red and thick
- Used by a neighbour to breed a few heifers
- This is our last Accelerator bull to sell. Past bull buyers have been very happy with how IPU Accelerator 206U sons have calved and grown. Their calves grow and most important, these bulls stay in the herd.
- This twin has grown out into a solid bull, a 1/2 brother to Lot 24.



Lot 35

# Cuthbertson Cattle Co.

My family is very enthusiastic to bring this pen of bulls to town.

The consistency of these good footed, large framed, big nuted, wide topped, hairy, well muscled bulls is amazing. Anyone of these bulls could start the sale order and the quality does not drop off. These bulls have been culled for consistency.

Thank-you, to all our past buyers and friends for their continued support. The bulls are quiet, semen tested and raised in ranch conditions. These Bulls are grown out, not fattened out on a silage/grain ration.

*Scott, Jackie, Wyatt & Layne*



## 36

Yearling Simmental Bull

### CC BLACK WARRIOR 12C

23 January 2015 Reg#: BPG1160505  
Tattoo: CCCC 12C

WHEATLAND BULL 680S  
MADER 'WINNING' 99Y  
ULTRA POWERLINE CASSEY74U  
  
D BAR C TRACTION 126T  
D BAR C CINDER LEE 244X  
D BAR C CINDER LEE 584R

Weights		EPD's	
BW	95	CE	3.7
WW	758	BW	4.4
JAN 10	1230	WW	63.2
		YW	98.3
		MCE	6.6
		MWW	55.2
		MILK	23.6

A long bull off a special cow. This cow raised my son's Grand Champion 4-H Heifer at Peace Country Beef Congress and the District 4-H show last year.  
January 10, 2016 actual weight: 1230 lbs.



Lot 36

## 37

Yearling Simmental Bull

### CC BLACK WARRIOR 13C

27 January 2015 Reg#: BPG1160507  
Tattoo: CCCC 13C

WHEATLAND BULL 680S  
MADER 'WINNING' 99Y  
ULTRA POWERLINE CASSEY74U  
  
WS RED DREAM S49  
CG BLACK OPAL 954W  
CG BLACK OPAL 303N

Weights		EPD's	
BW	102	CE	2.9
WW	772	BW	4.8
JAN 10	1211	WW	70.6
		YW	107.4
		MCE	6.4
		MWW	58.5
		MILK	23.2

This bull's mother is a consistent bull producer, with this being her third bull in the sale. These Warrior bulls are super consistent in type and shape with great hair.  
January 10, 2016 actual weight: 1211 lbs.



Lot 37

## 38

Yearling Simmental Bull

### CC BLACK WARRIOR 15C

30 January 2015 Reg#: BPG1160508  
Tattoo: CCCC 15C

WHEATLAND BULL 680S  
MADER 'WINNING' 99Y  
ULTRA POWERLINE CASSEY74U  
  
BJA MR UNMATCHABULL 637U  
CC BLACK DEVRA  
D BAR C BLK DEVRA 9115W

Weights		EPD's	
BW	103	CE	2.9
WW	747	BW	4.4
JAN 10	1139	WW	68.0
		YW	104.5
		MCE	8.6
		MWW	55.8
		MILK	21.8

Deep, soggy, hairy, wide topped off a super cow. This bull is large framed with a deep body packing a lot of meat.  
January 10, 2016 actual weight: 1139 lbs.



Lot 38

**39**

Yearling Simmental Bull

**CC BLACK WARRIOR 16C**

30 January 2015 Reg#: BPG1160510  
Tattoo: CCCC 16C

WHEATLAND BULL 680S  
MADER 'WINNING' 99Y  
ULTRA POWERLINE CASSEY74U  
  
CDI SHEAR FORCE 41T  
D BAR C BLACK CALI 188X  
D BAR C BLACK CALI 8124U

Weights		EPD's	
BW	102	CE	5.2
WW	811	BW	3.9
JAN 10	1242	WW	67.1
		YW	106.4
		MCE	7.7
		MWW	56.8
		MILK	23.2

A full brother in last years' Sale sold to Marcel and Denise Desranleau for \$7750.00. The footnotes read large framed, thick, hairy and will produce calves that will pull the scale down. All that and more applies to this fantastic bull.  
January 10, 2016 actual weight: 1242 lbs.



Lot 39

**40**

Yearling Simmental Bull

**CC BLACK TARGET 17C**

2 February 2015 Reg#: BPG1160519  
Tattoo: CCCC 17C

REMINGTON ON TARGET 2S  
ULTRA MR TARGET 5A  
ULTRA JOKER CASSADE 90N  
  
D BAR C VENADA 44X  
CC BLACK DEVRA 8Z  
D BAR C BLK DEVRA 9115W

Weights		EPD's	
BW	98	CE	4.6
WW	722	BW	3.3
JAN 10	1173	WW	67.2
		YW	102.2
		MCE	8.3
		MWW	60.1
		MILK	26.4

Complete, is the word that best describes this bull. Well balanced, deep ribbed and nice muscle shape. This bull is an excellent representation of our new herdsire.  
January 10, 2016 actual weight: 1173 lbs.



Lot 40

**41**

Yearling Simmental Bull

**CC BLACK TARGET 18C**

10 February 2015 Reg#: BPG1160520  
Tattoo: CCCC 18C

REMINGTON ON TARGET 2S  
ULTRA MR TARGET 5A  
ULTRA JOKER CASSADE 90N  
  
D BAR C VENADA 44X  
CC BLACK CALMA  
D BAR C CALMA 9140W

Weights		EPD's	
BW	100	CE	4.2
WW	724	BW	3.8
JAN 10	1147	WW	69.7
		YW	105.9
		MCE	8.6
		MWW	60.8
		MILK	25.9

Another bull off a cow who produced a high seller in last years' sale going to Ken Dolan for \$ 8250.00. This bull is off our new herdsire who consistently produces great heads, and deep bodies with lots of hair.  
January 10, 2016 actual weight: 1147 lbs.



Lot 41

**42**

Yearling Simmental Bull

**CC BLACK TARGET 19C**

10 February 2015 Reg#: BPG1160522  
Tattoo: CCCC 19C

REMINGTON ON TARGET 2S  
ULTRA MR TARGET 5A  
ULTRA JOKER CASSADE 90N  
  
D BAR C TRACTION 126T  
CC BLACK LACE  
D BAR C BLACK LACE 8127U

Weights		EPD's	
BW	102	CE	4.4
WW	716	BW	3.6
JAN 10	1139	WW	64.0
		YW	97.9
		MCE	8.6
		MWW	59.3
		MILK	27.2

This bull follows with the same consistency as his brothers; wide topped, well muscled and hairy. These Target sons are easy doing.  
January 10, 2016 actual weight: 1139 lbs.



Lot 42

**43**

**Yearling Simmental Bull**  
**CC BLACK TARGET 20C**

13 February 2015 Reg#: BPG1160523  
 Tattoo: CCCC 20C

REMINGTON ON TARGET 2S  
 ULTRA MR TARGET 5A  
 ULTRA JOKER CASSADE 90N  
 BJA MR UNMATCHABULL 637U  
**CC BLACK GRETA**  
 CG BLACK GRETA 993W

Weights		EPD's	
BW	102	CE	3.4
WW	829	BW	4.2
JAN 10	1260	YW	68.8
		MCE	10.4
		MWW	57.0
		MILK	22.6

The brother to this bull was our High selling bull last year to Roland and Claire Soucy, for \$ 9000.00. This bull has lots of length and growth. The mother of this bull has raised a real awesome bull for the last three years in a row. How is that for consistency. Last bull born with the heaviest weight on January 10, 2016.  
 January 10, 2016 actual weight: 1260 lbs.



Lot 43

**44**

**Yearling Angus Bull**  
**CUTHBERTSON BLACK JAKE 14C**

27 January 2015 Reg#: 1886739  
 Tattoo: BLK 14C

NIGHTINGALE PROUD JAKE G405  
**BCC HERCULES 4Z**  
 BCC BLACK VELVET 7S  
 RING CREEK BARDOLENE 69W  
**BAMBI OF RING CREEK 34Y**  
 BAMBI OF RING CREEK 13W

Weights	
BW	94
WW	744
JAN 10	1236

The only Angus bull in our offering this year but he is an extra special one. His mother is a farm favorite. This guy packs lots of frame, muscle and big testicles.  
 January 10, 2016 actual weight: 1236 lbs.



Lot 44

**To Be a Champion, It Takes Commitment. Drive. Integrity.**

Top Quality Beef starts with Top Herd Performance.....  
 .....and Performance comes from Top Quality Feed.  
**THAT'S WHY CHAMPION DESIGNS ALL OF ITS FEEDS FOR PERFORMANCE!**



We're more than just a feed company.

**GRANDE PRAIRIE**  
 780-532-3151 1-800-243-0415  
[www.championfeeds.com](http://www.championfeeds.com)



**Valleyview Building Supplies**

HD LIVESTOCK EQUIPMENT SALES • An agent for Real Industries Ltd.

[www.realindustries.com](http://www.realindustries.com)

Nothing lasts like STEEL!



VALLEYVIEW BUILDING SUPPLIES  
 Box 90, Valleyview, AB T0H 3N0

Contact: LISA FAGAN 780-524-3381 or 1-888-524-2024

# Silver S Red Angus

We would like to start by saying Thank You to all our past customers, our families and all those who have supported us in the past year. We would also like to announce the arrival of the newest member of our family, Cameron Stark, who joined us on January 5th.

Once again, the bulls we have on offer this year have been on a simple, modest feed program, allowing you to see them in their true form, and easing the transition to a new home and feed program. They have all had full herd health and will be semen tested and vet inspected before sale.

Please call anytime, we are more than happy to answer any questions you may have, or stop by the farm for a visit! Again, Thank you to our past buyers and supporters, we look forward to seeing you all in March!

*Devin, Amber, Emily & Cameron Stark*



## 45 RED SILVER S 20B

25 MAY 2014 Reg#: 1889236  
Tattoo: DOSS 20B

RED NORTHLINE FAT TONY 605U  
RED SILVER S ZORRO 1Z  
RED DTA BARBARA 10X  
RED SILVER S FIRE  
RED SILVER S 19Y  
RED KLESKUN LAKE ESTY 1T

Weights		EPD's	
BW	88	CE	+2.7
WW	637	BW	+0.2
YW	1150	WW	+57
		YW	+85
		MILK	+16
		TM	+45

Starting us off this year is a sleek, dark red bull sired by our own home-raised bull, Silver S Zorro, a son of Fat Tony 605U, a champion bull known for his massive hip shape, strong feet and legs. 20B inherited the superb muscling and hip from the Fat Tony bloodline, matched with his dams frame, this bull is the complete package.



Lot 45

## 46 Red Silver S 3B

7 APRIL 2014 Reg#: 1889238  
Tattoo: DOSS 3B

RED NORTHLINE FAT TONY 605U  
RED SILVER S ZORRO 1Z  
RED DTA BARBARA 10X  
RED K-C CHATEAU 53R  
RED KLESKUN LAKE LADY 28T  
RED KLESKUN LAKE GAL 2K

Weights		EPD's	
BW	91	CE	+3.8
WW	696	BW	-1.0
YW	1016	WW	+45
		YW	+66
		MILK	+16
		TM	+38

This bull is nicely balanced, and moves out very well. He inherited the strong legs and wide feet of the Fat Tony bloodline, and combined with excellent disposition this bull will be a wonderful addition to any herd.



Lot 46

## 47 RED SILVER S 9B

22 APRIL 2014 Reg#: 1887339  
Tattoo: .DOSS 9B

RED ASPEN PERFECT TIMING 114S  
RED SILVER S FIRE  
RED BRYLOR MISS DEAL 76F  
RED KLESKUN LAKE DIVIDE 4W  
RED SILVER S ROSE 9Z  
RED SHILO ROSE 1N

Weights		EPD's	
BW	88	CE	2.8
WW	716	BW	-0.4
YW	1147	WW	53
		YW	77
		MILK	17
		TM	42

9B is smaller framed, with good muscling and depth of rib. Sired by an easy calver, this bull has a sound structure and is good natured. With lots of potential, this athletic little bull will fit in well wherever he ends up.



Lot 47



**48**

**RED SILVER S 18B**

11 MAY 2014 Reg#: 1887341  
Tattoo: DOSS 18B

- RED ASPEN PERFECT TIMING 114S
- RED SILVER S FIRE**
- RED BRYLOR MISS DEAL 76F
- RED KLESKUN LAKE DIVIDE 4W
- RED SILVER S LYNN 13Z**
- RED KLESKUN LAKE LYN 25T

Weights		EPD's	
BW	86	CE	3.4
WW	693	BW	-1.5
YW	1074	WW	49
		YW	71
		MILK	21
		TM	46

Smaller framed, long and smooth, this little bull has a well developed muscle pattern, He is out of a first calf heifer, but as the saying goes, good things come in small packages!



Lot 48

**49**

**RED SILVER S 15B**

2 MAY 2014 Reg#: 1887340  
Tattoo: DOSS 15B

- RED ASPEN PERFECT TIMING 114S
- RED SILVER S FIRE**
- RED BRYLOR MISS DEAL 76F
- RED SILVER S FIRE
- RED SILVER S LAKOTA 17Z**
- RED KLESKUN LAKE ESTY 23R

Weights		EPD's	
BW	88	CE	1.4
WW	674	BW	0.1
YW	1092	WW	58
		YW	84
		MILK	18
		TM	48

Long and lean, with a larger, square frame, 15B is athletic and smooth through the shoulders. With a moderate birthweight and sired by an easy calver, this bull has the potential to be a very versatile animal.



Lot 49

**50**

**Red Silver S 8B**

20 APRIL 2014 Reg#: Un Registered  
Tattoo: DOSS 8B

- RED DIAMOND T HIPS STOUT 107U
- RED TOP STOUT 06Z**
- RED TOP LAKIMA 06X
- RED SMOKY SABLE 93N
- RED ZAMBONI CHIP (DOSS 2R)**
- RED SHILO ROSE 1N

Weights		EPD's	
BW	82	CE	-
WW	856	BW	-
YW	1115	WW	-
		YW	-
		MILK	-
		TM	-

Dark red and thick haired, this bull is deep bodied with a strong topline. His dam is a hardworking female, with a good udder. This bull has the ability to put pounds on your calves. Unfortunately, due to an error during the registration process, this bull cannot be registered and will be sold without papers.



Lot 50

**51**

**Red Silver S 17B**

9 MAY 2014 Reg#: Un Registered  
Tattoo: DOSS 17B

- RED DIAMOND T HIPS STOUT 107U
- RED TOP STOUT 06Z**
- RED TOP LAKIMA 06X
- RED HOWE MR RAB DDH 71H
- RED HIDDEN LIC1 239L**
- RED GEIS LIC1 239'97

Weights		EPD's	
BW	89	CE	-
WW	696	BW	-
YW	1100	WW	-
		YW	-
		MILK	-
		TM	-

This bull is the son of the original cow in our herd. She has proven herself year after year, and we have retained a number of her heifers in our herd. This bull is proof again of the quality of this cow. Lots of rib, a solid frame and good temperament complete this package. Same as the previous bull, due to an error during the registration process, this bull cannot be registered and will be sold without papers.



Lot 51

# 52

**RED SILVER S 13B**  
 26 APRIL 2014      Reg#: Un Registered  
 Tattoo: DOSS 13B

RED NORTHLINE FAT TONY 605U  
 RED SILVER S ZORRO 1Z (TATTOO: DOSS 1Z)  
 RED DTA BARBARA 10X

Weights		EPD's	
BW	79	CE	-
WW	786	BW	-
YW	1140	WW	-
		YW	-
		MILK	-
		TM	-

ANGUS COW 630S

This bulls mother is an unregistered purebred cow, so he will not come with papers. That said, he is a smooth little bull, with good legs and feet. His mother is a low maintenance, deep bodied cow with an excellent disposition.



Lot 52

# 53

**RED SILVER S 14B**  
 1 MAY 2014      Reg#: Un Registered  
 Tattoo: DOSS 14B

RED NORTHLINE FAT TONY 605U  
 RED SILVER S ZORRO 1Z (TATTOO: DOSS 1Z)  
 RED DTA BARBARA 10X

Weights		EPD's	
BW	86	CE	-
WW	779	BW	-
YW	1130	WW	-
		YW	-
		MILK	-
		TM	-

ANGUS COW 620S

Same as the previous bull, this guy sells without papers as his mother is also an unregistered purebred. Another low maintenance, quiet cow, this bull inherited these traits from his mother. Dark colouring, good muscle pattern and smoothness complete this package.



Lot 53



**Greenview Veterinay Clinic**  
 Box 1146, 4602-39 Ave  
 Valleyview, AB T0H 3N0  
 Phone: (780) 524-4616 • Fax: (780) 524-2690

**Kevin Breker, DVM**  
**Jocelyn Gibson, DVM**  
**Coby Frey, DVM**  
**Melissa Westling, DVM**

[www.peacrivervetclinic.ca](http://www.peacrivervetclinic.ca)

**PROUD TO BE  
 A PART OF YOUR  
 COMMUNITY**



1.877.627.8468  
 martindeerline.com





# ONLINE BIDDING

# BID



Also iPhone compatible

Vold Jones Vold is proud to offer live real time bidding for all of our up coming bull sales. Since VJV has teamed up with Online Ringman they have taken the auction business to another level, Real time, live video and audio available at anyone's finger tips. All you need to do is pre register prior to sale day, log in and bid away.

To register visit our web site [www.vjvauction.com](http://www.vjvauction.com) and click the tab "Purebred Sale"  
For any questions concerning online bidding give Craig a call (403) 783-1453

Cant make the sale take advantage of

- Live streaming
- Live audio
- Live video
- Real time bidding



## Joco Trucking Ltd.

• corral cleaning • tandem spreading

## JODY MILLAR

Cell: 403-304-7772

Phone: 403-309-6697

email: [jocotrucking@hotmail.com](mailto:jocotrucking@hotmail.com)

Box 206 - Bentley, AB T0C 0J0

## POPS Home Hardware Building Centre

4024 - 53 Avenue • High Prairie, Alberta • 780-523-3995



Call it increasing stock in the family business... Alberta style.

Long <sup>ATB Financial</sup> **LOVE**  
This **LAND**

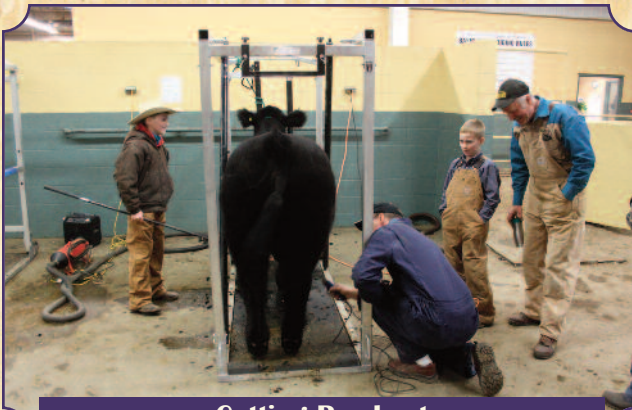
With 2.3 million head of beef cattle across Alberta, that's a lot of stock.  
Long Love This Land.

[atb.com](http://atb.com)

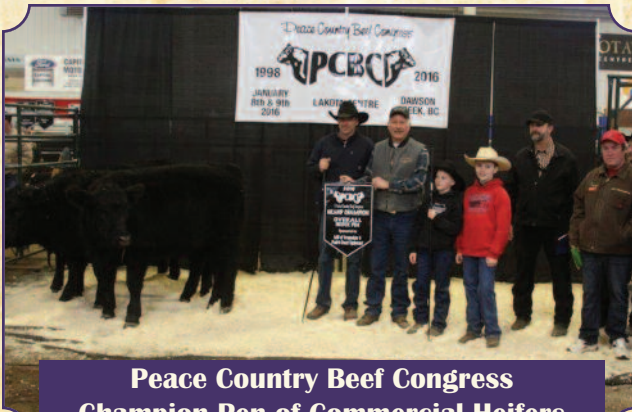
CASHFLOW | FINANCING | CLOSE TO HOME | AG KNOW-HOW

™ Trademarks of Alberta Treasury Branches.

**ATB** Agriculture™



**Getting Ready at  
Peace Country Beef Congress**



**Peace Country Beef Congress  
Champion Pen of Commercial Heifers  
~ Cuthbertson Cattle Co. ~**

## Terms and Conditions

**Terms:** Terms of the sale are cash or cheque – payable in Canadian funds at par immediately following the sale. The right of ownership shall not pass until after settlement is made. All settlements must be made before any animals are released.

**Disputes:** The Auctioneer shall control the bidding at all times. In case of disputes the Auctioneer's decision shall be final.

**Purchaser's Risk:** Each animal becomes the risk of the Purchaser as soon as sold. Animals will be cared for at the purchaser's risk for a reasonable length of time.

**Announcements:** Announcements from the auction stand will take precedence over any printed matter.

**Accidents:** All precautions possible will be taken to protect the safety of the buyers. Grande Prairie Livestock Market nor any owner assumes responsibility in this matter and disclaims any liability, legal or otherwise, in the event of accidents or loss of property.

**All Sales of Animals:** Shall be by auction and shall be conducted by the Auctioneers. The contributor has the privilege of making one bid which shall be presented to the auctioneer before the animal enters the sale ring.

**Absentee Bids:** Mailed or telephone bids shall be handled in a confidential manner if you are unable to attend the sale in person.

**Breeding Guarantees:** The seller warrants clear title to and the right to sell each animal offered for sale. All bulls offered will have passed a semen evaluation and are warranted to be sound, however, the seller is not responsible for

damage caused by foreign objects after the bull has been sold nor sickness that was not apparent at the time of the sale.

**Breeder's Guarantee:** All bulls offered will have passed a semen evaluation and warranted to be sound (by a certified veterinarian) as per breed Association Breeding Guarantee guidelines. Copies are available at the sale settlement desk to be picked up by the buyer at any time. In no event shall the seller be responsible for reimbursing more than the purchase price. All heifers are guaranteed open.

**Certificate of Registry:** A certificate of registry duly transferred to the buyer will be furnished for each registered animal after settlement is made.

**Rights & Obligations:** The above terms and conditions of the sale shall constitute a contract between the buyer and the seller and be equally binding to both. Resale of animals following purchase in this sale shall constitute a separate transaction and the rights and obligations of the two parties connected thereto are not covered by the terms and conditions of this sale.

**Shipping:** Assistance may be given in making shipment after the sale, but no risk is assumed by consignors or the seller. Expenses incurred are the responsibility of the purchaser. Purchasers are required to furnish shipping instructions when making settlement. Any additional expenses are the responsibility of the buyer, including duty, brokerage fees, etc..

**Retained Interest:** Individual consignors reserve the right to collect "Owner's Use" semen from their bulls in this sale (at their expense and at the buyer's convenience).

# KEDDIE'S

**Feed • Ranch Supplies • Clothing • Saddlery**

**SHOULDER SQUEEZE**

**MATERNITY PEN**

**RENT IT AT  
KEDDIE'S**

- Ditch Witch
- Skid Steers
- Wishek Disc - 10, 14, 22 ft.

**BrettYoung**

- Forage
- Turf
- Reclamation Seed
- Canola

**"Ask about the Brett Young Forage Guarantee"**

www.brettyoung.ca *Always Come Through*

**Sundog Solar**

**The Most Versatile Stock Tank Ever Designed**

- Zero contamination of original water source
- Used with solar/vented or conventional AC power
- Capacity for 250 head
- Low energy requirements - saving \$!
- System available for year around use
- Lets feet rot and diseases
- Up to 25% better weight gain

## Maximize-Your-Feed-Dollar\$

Our nutritionists can design a feed program that will work for you.

**WE OFFER:**

- Feed analysis and recommendations
- Custom Blends • Mini and bulk quantities
- CUSTOM FEED RATIIONS**
- Mineral blends • Liquid supplements

**PHONE AND MAIL ORDERS WELCOME**

1-800-390-6924 • East of Ford on 132 Avenue, North End, Grande Prairie • 780-532-4688 • keddie.com

Co-operative Limited

922 Main Street  
Highway #49  
Fahler, Alberta T0H 1M0

UFA.com

**TIM MCGRATH**  
Crop Protection Representative  
Peace Country

CELL 780-837-0154  
tim.mcgrath@ufa.com

**C: 780-882-1897 Wayne Perry H: 780-354-8722**

**Flying W Livestock**  
Hauling  
Your Bovine Relocator

RR1 Box 11, Site 7 Beaverlodge, AB T0H 0C0

# BACK IN BLACK

TRUCKING

LIVESTOCK HAULING STEP DECK HI-BOY

*Barry Klimp owner/operator*

Box 84

Phone 780-524-4719

Sunset House, AB

Cell 780-552-3538

TOH 3H0



Pet Food & Supplies ~ Livestock Supplies ~ Tack  
Candy Store ~ Appliance Repair ~ Laundromat

**Bernie and Laurie Green • 780-524-6830**

## KAKWA CONTRACTING

Hotshot services specializing in  
oilfield and agriculture hauling

**Mike Cornelsen**

Cell: (780)897-4848

Office: (780)978-5452

kakwacontracting@gmail.com

## Jeff Person

(780) 832-5513

### CUSTOM BUILT:

Wind Panels

Bale Feeders

Free Standing Panels

Calf Shelters

Horse Shelters



## Shawn's Custom Meat Cutting

Butchering • Sausage Making • Jerky  
Mobile Butcher Licence

**Shawn Pearson**

RR#1 Site 4 Box 6

Sexsmith, Alberta.

ToH 3Co

780-831-8954

shawn.pearson@xplornet.com

www.shawnscustommeats.com

## **CRAMER'S BREAKING**

~ SPECIALIZING IN ~  
LAND BREAKING AND WORKDOWN  
NEW LAND, OLD PASTURE AND STUBBLE LAND  
LAND CLEARING

D. Cramer Enterprises

David Cramer

780-978-6768

dcramerenterprises@outlook.com



## MONICA CZECH

Phone: 780-447-3276

Fax: 780-733-7724

Direct: 780-733-7715

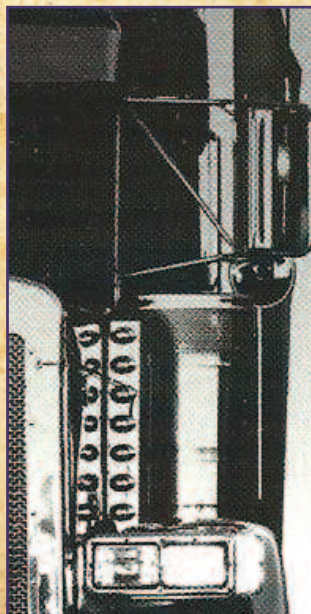
Cell: 780-318-3636

302, 13220 St. Albert Trail NW,  
Edmonton, AB T5L 4W1

mczech@cdnfarmins.com

www.cdnfarmins.com

**Livestock Insurance**



## JNW TRUCKING

For your hauling needs offering, cattle hauling, hay hauling,  
equipment hauling and grain hauling

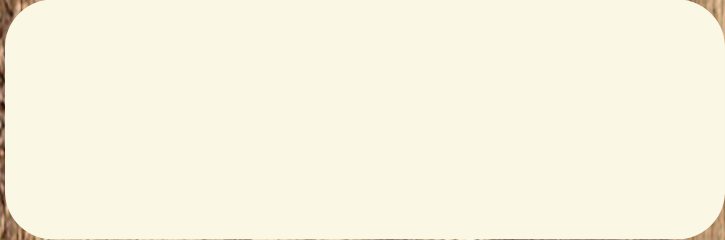
Box 1531

Valleyview AB

1-780-524-4737 or 780-524-7888

jimnicky.wirth@gmail.com

Willowdale Simmentals  
Dale and Judy Smith  
Box 1555  
Valleyview, AB  
T0H 3N0



**PEACE COUNTRY**  
**SUPREME**  
**BULL SALE**

**SATURDAY, MARCH 12, 2016**

**SALE TIME - 1:00 PM**

**VJV BEAVERLODGE**



**WILLOWDALE SIMMENTALS • CUTHBERTSON CATTLE CO**  
**SILVER S RED ANGUS**